

Increased Interleukin-35 Suppresses Peripheral CD14⁺ Monocytes Function in Patients with Kawasaki Disease

Haijian Xing

Xi'an Jiaotong University Medical College First Affiliated Hospital

Gang Tian (✉ gangtianxjtu@tom.com)

Xi'an Jiaotong University Medical College First Affiliated Hospital <https://orcid.org/0000-0003-4841-4694>

Research article

Keywords: Kawasaki disease; interleukin-35; monocytes; immunosuppression

Posted Date: February 24th, 2020

DOI: <https://doi.org/10.21203/rs.2.19152/v2>

License:   This work is licensed under a Creative Commons Attribution 4.0 International License.

[Read Full License](#)

Version of Record: A version of this preprint was published at BMC Immunology on April 10th, 2020. See the published version at <https://doi.org/10.1186/s12865-020-00348-x>.

Abstract

Background Interleukin-35 (IL-35) is a newly identified IL-12 cytokine family member, which regulates the activity of immune cells in infectious diseases and autoimmune disorders. However, the regulatory function of IL-35 in Kawasaki disease is not well elucidated. **Methods** Thirty-three patients with Kawasaki disease and seventeen healthy controls were studied. Peripheral IL-35 concentration was measured by enzyme linked immunosorbent assay. CD14 + monocytes were purified, and mRNA expression of IL-35 receptor (IL-12R β 2 and gp130) was semi-quantified by real-time polymerase chain reaction. CD14 + monocytes were stimulated with recombinant IL-35. The modulatory role of IL-35 treated CD14 + monocytes to naïve CD4 + T cell activation was investigated by flow cytometry. The influence of IL-35 to cytotoxicity of CD14 + monocytes was assessed by measuring target cell death, cytokine and granzyme secretion. **Results** Plasma IL-35 concentration was elevated in patients with Kawasaki disease. There was no significant differences of either IL-12R β 2 or gp130 mRNA expression in CD14 + monocytes between Kawasaki disease patients and controls. IL-35 suppressed CD14 + monocytes induced naïve CD4 + T cell activation in Kawasaki disease, and this process required direct cell-to-cell contact. IL-35 also inhibited tumor necrosis factor- α (TNF- α) and granzyme B secretion by CD14 + monocytes from patients with Kawasaki disease, however, only granzyme B was responsible for the cytotoxicity of CD14 + monocytes. **Conclusions** IL-35 played an important immunosuppressive role to CD14 + monocytes function in Kawasaki disease.

Background

Kawasaki disease is an acute, self-limited febrile vasculitis which predominantly affects children less than 5 years old. Kawasaki disease could lead to acquired heart disease, especially coronary artery aneurysms in children in developed countries [1, 2]. Although timely administration with intravenous immunoglobulin and additional therapies have reduced the incidence of coronary artery aneurysms from 25% to approximate 4% [3], the cause of Kawasaki disease remains unknown [4]. The current understanding on the pathogenesis has provided the evidence for the involvement of both conventional antigens and superantigens in Kawasaki disease to trigger extensive immune response [5-7]. The early event of immune response in Kawasaki disease is the activation of innate immune system, with elevated numbers of activated neutrophils and monocytes [8-10] as well as increased expression of circulating cytokines [interleukin (IL)-1, IL-6, and tumor necrosis factor (TNF)] signaling pathways [11].

IL-35 is an anti-inflammatory cytokine and belongs to IL-12 cytokine family [12, 13]. IL-35 is a heterodimeric hematopoietin, which composed by Epstein-Barr virus-induced gene 3 (EBI3) and IL-12p35 subunit [12, 13]. IL-35 receptor is also a heterodimer protein, including IL-12 receptor β 2 subunit (IL-12R β 2) and gp130 [14]. Signaling through IL-35 results in the suppression of Janus kinase/signal transducer and activator of transcription pathway [15, 16]. Thus, IL-35 always inhibits T cell proliferation and converts naïve T cells into IL-35-secreting induced regulatory T cells [17, 18]. Importantly, IL-35 dampens inflammatory process and prevents coronary artery lesion in patients with Kawasaki disease [19]. However, the regulatory role of IL-35 to monocytes has not been well elucidated, especially in

Kawasaki disease. It was shown that IL-35 dampens human osteoclastogenesis from monocytes induced by soluble receptor activator of nuclear factor- κ B ligand [20]. Thus, we hypothesized that IL-35 modulated circulating CD14⁺ monocytes activity, which contributed to the immunopathogenesis in Kawasaki disease. To test this possibility, we firstly investigated peripheral IL-35 expression profile and IL-35 receptor (IL-12R β 2 and gp130) expression in purified CD14⁺ monocytes in patients with Kawasaki disease, and further assessed the co-stimulatory and cytotoxic activity of purified CD14⁺ monocytes in response to recombinant human IL-35 stimulation *in vitro*.

Materials And Methods

Studied subjects

The study protocol conformed to the ethical guidelines of the 1975 Declaration of Helsinki (6th revision, 2008) as reflected in a priori approval by Ethics Committee of Xi'an Jiaotong University. Informed consent was obtained from the legal guardians of each studied subjects. Thirty-three children under seven years old with Kawasaki disease who were hospitalized in The Children's Hospital Affiliated to Xi'an Jiaotong University between July 2018 to June 2019 were enrolled in this study. The diagnosis of Kawasaki disease was made in accordance with the Clinical Statements and Guidelines for Kawasaki disease by American Heart Association [1]. The exclusive criteria was the affliction with autoimmune diseases, chronic viral infection, or severe organ failure. Meanwhile, Seventeen healthy children who received regular health examinations during the same period were also enrolled as controls. The baseline characteristics of all studied subjects were listed in Table 1.

CD14⁺ monocytes purification and naïve CD4⁺ T cells isolation

Peripheral blood samples were collected from each studied subjects. Peripheral blood mononuclear cells were isolated using Ficoll Plus 1.077 (Solarbio, Beijing, China) by density gradient centrifugation. CD14⁺ monocytes were purified using human CD14 MicroBeads UltraPure (Miltenyi, Bergisch Gladbach, Germany), while naïve CD4⁺ T cells were isolated using human Naïve CD4⁺ T Cell Isolation Kit II (Miltenyi) following manufacturer's instruction. The purity of enriched cells was more than 95% by flow cytometry determination.

Cell culture

Purified CD14⁺ monocytes were stimulated with 50ng/ml of recombinant human IL-35 (Peprotech, Rocky Hill, NJ, USA) in the presence of 1 \times lipopolysaccharide (LPS; eBioscience, Thermo Fisher Scientific, San Diego, USA) for 24 hours. 10⁵ of IL-35 treated CD14⁺ monocytes were co-cultured in direct or in indirect contact with 10⁵ of autologous naïve CD4⁺ T cells in the presence of anti-CD3/CD28. In direct contact co-culture, CD14⁺ monocytes and naïve CD4⁺ T cells were directly mixed in the 24-well plate. In indirect contact co-culture, CD14⁺ monocytes were seeded into upper chamber while naïve CD4⁺ T cells were seeded into lower chamber of the Transwell plate (Corning, Corning, NY, USA). In the last 12 hours of co-

culture, phorbol 12-myristate 13-acetate (50ng/ml), ionomycin (1µg/ml), and Brefeldin A (10µg/ml) were added. Moreover, 10^5 of IL-35 treated CD14⁺ monocytes were co-cultured with 10^5 of human umbilical vein endothelial cells (HUVECs) in either direct contact or indirect contact manner. In certain experiments, TNF antagonist etanercept (100µg/ml, Pfizer, England) or granzyme B inhibitor Z-AAD-CMK (100µmol/L, Kamiya Biomed, Washington, USA) was added to the co-culture systems. Cells and supernatants were harvested 48 hours post co-culture.

Enzyme linked immunosorbent assay (ELISA)

Plasma IL-35 concentration was detected using human IL-35 ELISA kit (CUSABIO, Wuhan, Hubei Province, China), and cytokine production in the cultured supernatants was measured using commercial ELISA kits (CUSABIO) following manufacturer's instruction. Each sample was analyzed in triplicate and the mean value was recorded.

Real-time reverse transcriptional polymerase chain reaction (PCR)

Total RNA was isolated from purified CD14⁺ monocytes using the TRIzol reagent (Invitrogen, Thermo Fisher Scientific, Carlsbad, CA, USA). Equal amounts of total RNA from each sample were reverse-transcribed into cDNA using AMV reverse transcription system (Promega, Madison, WI, USA), and real-time PCR was performed using GoTaq qPCR Master Mix (Promega) following manufacturer's instruction. Real-time PCR primers (IL-12Rβ2 and gp130) assay designed for analysis was purchased from Bio-Rad (Hercules, CA, USA). The primer sequences for Fas ligand (FasL): forward: 5'-ATG TTT CAG CTC TTC CAC CTA CAG AAG GA-3', reverse: 5'-CAG AGA GAG CTC AGA TAC GTT GAC-3'; TNF-related apoptosis-inducing ligand (TRAIL): forward: 5'-CTG CTG GCA AGT CAA GTG GCA ACT C-3', reverse: 5'-GTC GCA TCC TGA AAA CTG AAT AGT-3'. GAPDH was applied as standard for data normalization.

Flow cytometry

Cells were firstly pre-incubated with Cell Activation Cocktail (R&D systems, Minneapolis, MN, USA), and were stained for surface marker with antibodies against CD4 (eBioscience). After washed twice, cells were fixed and permeabilized with intracellular fixation & permeabilization buffer (eBioscience), and were then incubated with antibodies against interferon (IFN)-γ and IL-17A (eBioscience) for intracellular staining. The isotype control was used for separation of positive and negative cells of IFN-γ and IL-17A. BD Bioscience FACS Aria II flow cytometer was used for cell acquisition, and FlowJo V8.6.2 was used for data analysis.

Cell counting kit-8 (CCK-8) assay

Cellular proliferation was measured by CCK-8 method (Beyotimes, Wuhan, Hubei Province, China). Absorbance was measured at wavelength of 450_{nm}.

Cytotoxicity assay

The target HUVECs death was assessed by measurement of lactate dehydrogenase (LDH) expression in the supernatants using LDH Cytotoxicity Assay Kit (Beyotimes) following manufacturer's instruction. The low-level control was defined as the LDH level in HUVECs cultured alone, while the high-level control was defined as the LDH level in Triton X-100 treated HUVECs. The frequency of target cell death was calculated using the following equation: $(\text{experiment value} - \text{low-level control}) / (\text{high-level control} - \text{low-level control}) \times 100\%$ [21].

Statistical analysis

GraphPad Prism 5 was used for the statistical analyses. Data were presented as mean \pm standard deviation. The difference between groups was assessed using Student's *t* test, paired *t* test, or Tukey test. A *p* value less than 0.05 was considered as significance.

Results

Plasma IL-35 was elevated in patients with Kawasaki disease

Plasma IL-35 concentration was robustly increased in patients with Kawasaki disease ($2792 \pm 896.7 \text{ pg/ml}$) when compared with in controls ($1345 \pm 401.7 \text{ pg/ml}$; Student's *t* test, $p < 0.0001$, Figure 1a). However, there were no significant correlation between IL-35 concentration and clinical index ($p > 0.05$). Moreover, mRNA relative levels corresponding to IL-35 receptor subunits, IL-12R β 2 and gp130, were semi-quantified in purified CD14⁺ monocytes from all enrolled subjects. There were no significant differences of either IL-12 R β 2 or gp130 mRNA level between Kawasaki disease and controls (Student's *t* tests, $p > 0.05$, Figure 1b and 1c).

In vitro IL-35 stimulation suppressed CD14⁺ monocytes mediated naïve CD4⁺ T cell activation in patients with Kawasaki disease

CD14⁺ monocytes, which were purified from eighteen patients with Kawasaki disease, were stimulated with recombinant human IL-35 and LPS for 24 hours. 10^5 of IL-35 stimulated CD14⁺ monocytes were co-cultured in direct or in indirect contact with 10^5 of autologous naïve CD4⁺ T cells for 48 hours. Production of IFN- γ and IL-17A by CD4⁺ T cells was investigated by flow cytometry. Typical flow dots analyses for T helper 1 (Th1, CD4⁺IFN- γ ⁺) and Th17 (CD4⁺IL-17A⁺) were shown in Figure 2a and 2b, respectively. In indirect contact co-culture system between CD14⁺ monocytes and CD4⁺ T cells, percentages of either Th1 or Th17 cells did not reveal significant elevation when compared with naïve CD4⁺ T cells cultured alone (paired *t* tests, $p > 0.05$, Figure 2c and 2d). Th1 and Th17 cells frequency also showed comparable level between cells with and without IL-35 stimulation in indirect contact co-culture system (paired *t* tests, $p > 0.05$, Figure 2c and 2d). In contrast, direct contact induced promotion of CD14⁺ monocytes-mediated CD4⁺ T cell activation, which presented by the robust elevation of both Th1 ($5.68 \pm 1.27\%$ vs $3.14 \pm 1.05\%$; paired *t* test, $p < 0.0001$, Figure 2c) and Th17 ($2.98 \pm 0.69\%$ vs $1.37 \pm 0.26\%$; paired *t* test, $p < 0.0001$, Figure 2d). IL-35 stimulation to CD14⁺ monocytes inhibited the mediation of Th1 ($4.87 \pm 0.89\%$; paired *t* test,

$p=0.034$, Figure 2c) and Th17 ($2.39\pm0.93\%$; paired t test, $p=0.037$, Figure 2d) activation in direct contact co-culture system.

***In vitro* IL-35 stimulation inhibited TNF- α and granzyme B production by CD14⁺ monocytes from patients with Kawasaki disease**

10^5 of purified CD14⁺ monocytes from eleven patients with Kawasaki disease were stimulated with IL-35 and LPS for 24 hours. CCK-8 results revealed that IL-35 did not promote CD14⁺ monocytes *in vitro* (paired t test, $p=0.947$, Figure 3a). TNF- α and granzyme A/B/H/K in the cultured supernatants was measured by ELISA. *In vitro* IL-35 stimulation dampened TNF- α ($107.8\pm34.58\text{pg/ml}$ vs $175.2\pm39.85\text{pg/ml}$; paired t test, $p=0.0004$, Figure 3b) and granzyme B ($1834\pm431.1\text{pg/ml}$ vs $2483\pm458.8\text{pg/ml}$; paired t test, $p=0.0027$, Figure 3d). However, there were no significant changes in either granzyme A (Figure 3c), granzyme H (Figure 3e), or granzyme K (Figure 3f) production by CD14⁺ monocytes in response to IL-35 stimulation (paired t tests, $p>0.05$). Furthermore, mRNA relative levels corresponding to FasL and TRAIL were semi-quantified in CD14⁺ monocytes. There were no remarkable differences of either FasL or TRAIL mRNA level between cell with and without IL-35 stimulation (paired t tests, $p>0.05$, Figure 3g and 3h).

***In vitro* IL-35 stimulation inhibited CD14⁺ monocytes induced HUVECs death through granzyme B secretion**

10^5 of CD14⁺ monocytes, which were purified from eight patients with Kawasaki disease and twelve healthy controls, were co-cultured with 10^5 of HUVECs in both direct and indirect contact manners. CD14⁺ monocytes from Kawasaki disease patients induced elevated target HUVECs death in both direct contact ($19.45\pm3.90\%$ vs $15.15\pm3.87\%$; Tukey test, $p=0.026$) and indirect contact ($22.50\pm7.69\%$ vs $16.58\pm3.77\%$; Tukey test, $p=0.033$) co-culture systems (Figure 4a). However, there were no significant differences of target cell death between direct and indirect contact co-culture system (Tukey tests, $p>0.05$, Figure 4a). Moreover, CD14⁺ monocytes from Kawasaki disease were stimulated with recombinant human IL-35 and LPS for 24 hours. 10^5 of IL-35-stimulated CD14⁺ monocytes were co-cultured in direct contact or in indirect contact with 10^5 of HUVECs, in the presence or absence of etanercept (TNF antagonist) or Z-AAD-CMK (granzyme B inhibitor) stimulation. Etanercept treatment neither induced CD14⁺ monocytes-mediated target cell death in direct contact ($20.43\pm3.02\%$, Tukey test, $p=0.581$, Figure 4b) or indirect contact ($20.90\pm4.30\%$, Tukey test, $p=0.615$, Figure 4c) co-culture system, nor enhanced the suppression function of IL-35 stimulation in direct contact ($15.69\pm2.07\%$, Tukey test, $p=0.727$, Figure 4b) or indirect contact ($15.41\pm3.99\%$, Tukey test, $p=0.833$, Figure 4c) co-culture system. In contrast, Z-AAD-CMK stimulation not only inhibited CD14⁺ monocytes-induced HUVECs death in direct contact ($15.27\pm2.06\%$, Tukey test, $p=0.018$, Figure 4d) or indirect contact ($15.31\pm3.39\%$, Tukey test, $p=0.029$, Figure 4e) co-culture system, but also further dampened the suppression function of IL-35 in direct contact ($12.15\pm2.26\%$, Tukey test, $p=0.041$, Figure 4d) or indirect contact ($12.05\pm2.61\%$, Tukey test, $p=0.015$, Figure 4e) co-culture system.

Discussion

To the best of our knowledge, this was the first study on the direct regulatory role of IL-35 to CD14⁺ monocytes in Kawasaki disease. We showed an elevation of plasma IL-35 concentration in patients with Kawasaki disease, however, IL-35 receptor in CD14⁺ monocytes was comparable between Kawasaki disease patients and controls. On the one hand, IL-35 suppressed CD14⁺ monocytes induced naïve CD4⁺ T cell activation in Kawasaki disease in a direct cell-to-cell contact manner. On the other hand, IL-35 dampened TNF- α and granzyme B production by CD14⁺ monocytes in Kawasaki disease, however, only granzyme B contributed to the cytotoxicity of CD14⁺ monocytes. The current data indicated an immunosuppressive activity of IL-35 to peripheral CD14⁺ monocytes in Kawasaki disease.

Recent studies have revealed abnormal expression of IL-35 in inflammatory autoimmune diseases, and suggested the critical regulatory role in the onset and development of these diseases [22, 23]. Decreased expression of peripheral IL-35 was reported in patients with systemic lupus erythematosus [24], multiple sclerosis [25], primary Sjogren's syndrome [26], and psoriasis vulgaris [27]. In contrast, intestinal regulatory B cells and circulating regulatory CD4⁺/CD8⁺ T cells produced high level of IL-35 in active inflammatory bowel disease [28]. Herein, we demonstrated an increasing concentration of plasma IL-35 in Kawasaki disease. However, Su *et al.* showed a decreased level of IL-35 in patients with Kawasaki disease with or without coronary arterial lesions [19]. There were two possible reasons for this difference. On the one hand, average age of enrolled children was approximate four years-old in our study, while was nearly two years-old in Su's study. Lymphocyte, which was the important source of IL-35, was the major component of white blood cells in two year-old children. The immune status of the two enrolled groups might be varied, leading to the differential expression profile of IL-35 in different ages. On the other hand, different ELISA kits used in two studies might be another factor for the different results. Moreover, it was not surprising on this controversy because previous findings on rheumatoid arthritis also revealed similar disputation. Zhang *et al.* showed a reduced serum IL-35 level with a positive correlation with regulatory T cell frequency in rheumatoid arthritis patients [29]. However, a more recent report indicated that elevated serum IL-35 expression participate in the regulation of disease activity of rheumatoid arthritis [30]. Importantly, functional analysis of IL-35 in rheumatoid arthritis showed an anti-inflammatory activity both *in vitro* and *in vivo* [31]. Thus, further experiments were needed for the functional activity of IL-35 in Kawasaki disease.

CD14⁺ monocytes are important components of innate immune response, and take part in the immunopathogenesis of autoimmune disorders, cancers, and infectious diseases. As the indirect antigen presenting cells and co-stimulatory signaling transducer, CD14⁺ monocytes induced the activation and differentiation of CD4⁺ T cells in rheumatoid arthritis [32], lung squamous carcinoma [33], and chronic hepatitis C [21]. In consistent with these previous reports, we found that CD14⁺ monocytes from patients with Kawasaki disease only effectively promoted the activation and differentiation of naïve CD4⁺ T cells into IFN- γ -producing Th1 and IL-17A-producing Th17 cells under direct contact condition. Furthermore, various factors, including CD147 [32], IL-7 [33], and Notching signaling pathway [21], could directly

regulate the differential activity of CD14⁺ monocytes. IL-35 also dampened CD14⁺ monocytes-induced naïve CD4⁺ T cells activation in Kawasaki disease, indicating that elevated IL-35 might play a protective role to suppress extensive adaptive immune response in Kawasaki disease.

CD14⁺ monocytes also present cytotoxic activity during infection and cancers. There are two independent pathways which contribute to the cytotoxicity of CD14⁺ monocytes. On the one hand, CD14⁺ monocytes secreted soluble factors (mainly TNF- α and granzymes) to induce the apoptosis/necrosis of target cells [34, 35]. On the other hand, FasL and TRAIL-mediated apoptosis also take part in the cytotoxicity of CD14⁺ monocytes [36, 37]. IL-35 stimulation to CD14⁺ monocytes did not influence FasL or TRAIL mRNA relative level, indicating that IL-35 did not affect the expressions of pro-apoptosis ligand in CD14⁺ monocytes. In contrast, IL-35 stimulation suppressed the production of TNF- α and granzyme B by CD14⁺ monocytes, suggesting that IL-35 mainly inhibited soluble factors secretion. Moreover, we further functionally analyzed the cytotoxicity of CD14⁺ monocytes to HUVECs. CD14⁺ monocytes revealed elevated cytolytic activity in Kawasaki disease, and this process did not require direct cell-to-cell contact. IL-35 stimulation suppressed the cytotoxicity of CD14⁺ monocytes. Granzyme B, not TNF- α , contributed to the cytolytic function of CD14⁺ monocytes, because only granzyme B inhibitor further dampened target cell death induced by CD14⁺ monocytes. The current data further suggested that the increased expression of IL-35 revealed the protective activity in Kawasaki disease probably *via* suppression the cytotoxicity of CD14⁺ monocytes.

Conclusion

Elevated circulating IL-35 played an important immunosuppressive role to CD14⁺ monocytes function in Kawasaki disease, including direct cell-to-cell contact-mediated naïve CD4⁺ T cells activation/differentiation and granzyme B-induced cytolytic function. The current data revealed a protective activity of IL-35 in Kawasaki disease. This might be critical for better understanding the pathogenesis of Kawasaki disease, and IL-35 might also serve as a therapeutic target for treatment of Kawasaki disease.

Abbreviations

CCK-8: Cell counting kit-8; ELISA: Enzyme linked immunosorbent assay; FasL: Fas ligand; HUVECs: human umbilical vein endothelial cells; IFN: interferon; IL: Interleukin; LDH: lactate dehydrogenase; LPS: lipopolysaccharide; PCR: polymerase chain reaction; Th: T helper; TNF- α : tumor necrosis factor- α ; TRAIL: TNF-related apoptosis-inducing ligand.

Declarations

Ethics approval and consent to participate

The study protocol conformed to the ethical guidelines of the 1975 Declaration of Helsinki (6th revision, 2008) as reflected in a priori approval by Ethics Committee of Xi'an Jiaotong University. Informed consent was obtained from the legal guardians of each studied subjects.

Consent for publication

Not applicable.

Availability of data and materials

All data used and analyzed during the present study will be available from the corresponding author on a reasonable request.

Competing interests

The authors declare that they have no competing interests.

Funding

None.

Authors' contributions

HX carried out the experiments, analyzed and interpreted the data, and drafted the manuscript. GT designed and supervised the study, and revised the manuscript.

Acknowledgements

We thank the volunteers for their participation in this study.

References

1. McCrindle BW, Rowley AH, Newburger JW, Burns JC, Bolger AF, Gewitz M, Baker AL, Jackson MA, Takahashi M, Shah PB, et al. Diagnosis, Treatment, and Long-Term Management of Kawasaki Disease: A Scientific Statement for Health Professionals From the American Heart Association. *Circulation* 2017; 135(17):e927-e999.
2. Onouchi Y, Gunji T, Burns JC, Shimizu C, Newburger JW, Yashiro M, Nakamura Y, Yanagawa H, Wakui K, Fukushima Y, et al. ITPKC functional polymorphism associated with Kawasaki disease susceptibility and formation of coronary artery aneurysms. *Nat Genet* 2008; 40(1):35-42.
3. Burns JC, Franco A. The immunomodulatory effects of intravenous immunoglobulin therapy in Kawasaki disease. *Expert Rev Clin Immunol* 2015; 11(7):819-825.
4. Nagata S. Causes of Kawasaki Disease-From Past to Present. *Front Pediatr* 2019; 7(18).

5. Natividad MF, Torres-Villanueva CA, Saloma CP. Superantigen involvement and susceptibility factors in Kawasaki disease: profiles of TCR V β 2+ T cells and HLA-DRB1, TNF-alpha and ITPKC genes among Filipino patients. *Int J Mol Epidemiol Genet* 2013; 4(1):70-76.
6. Lindquist ME, Hicar MD. B Cells and Antibodies in Kawasaki Disease. *Int J Mol Sci* 2019; 20(8):E1834.
7. Franco A, Shimizu C, Tremoulet AH, Burns JC. Memory T-cells and characterization of peripheral T-cell clones in acute Kawasaki disease. *Autoimmunity* 2010; 43(4):317-324.
8. Matsubara T, Ichiyama T, Furukawa S. Immunological profile of peripheral blood lymphocytes and monocytes/macrophages in Kawasaki disease. *Clin Exp Immunol* 2005; 141(3):381-387.
9. Koizumi K, Hoshiai M, Katsumata N, Toda T, Kise H, Hasebe Y, Kono Y, Sunaga Y, Yoshizawa M, Watanabe A, et al. Infliximab regulates monocytes and regulatory T cells in Kawasaki disease. *Pediatr Int* 2018; 60(9):796-802.
10. Xia Y, Tian X, Li Q, Wang G, Li C, Yang J. Expression of Fc γ Rs on monocytes among Kawasaki disease patients with coronary artery lesions. *Int Immunopharmacol* 2017; 45(1-5).
11. Abe J. [Cytokines in Kawasaki disease]. *Nihon Rinsho* 2014; 72(9):1548-1553.
12. Niedbala W, Wei XQ, Cai B, Hueber AJ, Leung BP, McInnes IB, Liew FY. IL-35 is a novel cytokine with therapeutic effects against collagen-induced arthritis through the expansion of regulatory T cells and suppression of Th17 cells. *Eur J Immunol* 2007; 37(11):3021-3029.
13. Collison LW, Workman CJ, Kuo TT, Boyd K, Wang Y, Vignali KM, Cross R, Sehy D, Blumberg RS, Vignali DA. The inhibitory cytokine IL-35 contributes to regulatory T-cell function. *Nature* 2007; 450(7169):566-569.
14. Collison LW, Delgoffe GM, Guy CS, Vignali KM, Chaturvedi V, Fairweather D, Satoskar AR, Garcia KC, Hunter CA, Drake CG, et al. The composition and signaling of the IL-35 receptor are unconventional. *Nat Immunol* 2012; 13(3):290-299.
15. Wu S, Li Y, Yao L, Li Y, Jiang S, Gu W, Shen H, Xia L, Lu J. Interleukin-35 inhibits angiogenesis through STAT1 signalling in rheumatoid synoviocytes. *Clin Exp Rheumatol* 2018; 36(2):223-227.
16. Liu S, Zhang Q, Shao X, Wang W, Zhang C, Jin Z. An immunosuppressive function of interleukin-35 in chronic hepatitis C virus infection. *Int Immunopharmacol* 2017; 50(87-94).
17. Ma Y, Chen L, Xie G, Zhou Y, Yue C, Yuan X, Zheng Y, Wang W, Deng L, Shen L. Elevated level of interleukin-35 in colorectal cancer induces conversion of T cells into iT35 by activating STAT1/STAT3. *Oncotarget* 2016; 7(45):73003-73015.
18. Liu J, Hao S, Chen X, Zhao H, Du L, Ren H, Wang C, Mao H. Human placental trophoblast cells contribute to maternal-fetal tolerance through expressing IL-35 and mediating iT35 conversion. *Nat Commun* 2019; 10(1):4601.
19. Su Y, Feng S, Luo L, Liu R, Yi Q. Association between IL-35 and coronary arterial lesions in children with Kawasaki disease. *Clin Exp Med* 2019; 19(1):87-92.

20. Yago T, Nanke Y, Kawamoto M, Kobashigawa T, Yamanaka H, Kotake S. IL-35 inhibits human osteoclastogenesis from monocytes induced by receptor-activator of NF-kappaB ligand. *Cent Eur J Immunol* 2018; 43(2):148-154.
21. Zhang ZH, Wang H, Zhang DN, Zhu GZ. Notch signaling suppresses CD14(+) monocytes cells activity in patients with chronic hepatitis C. *APMIS* 2019; 127(9):642-652.
22. Su LC, Liu XY, Huang AF, Xu WD. Emerging role of IL-35 in inflammatory autoimmune diseases. *Autoimmun Rev* 2018; 17(7):665-673.
23. Zhang J, Zhang Y, Wang Q, Li C, Deng H, Si C, Xiong H. Interleukin-35 in immune-related diseases: protection or destruction. *Immunology* 2019; 157(1):13-20.
24. Ye Z, Jiang Y, Sun D, Zhong W, Zhao L, Jiang Z. The Plasma Interleukin (IL)-35 Level and Frequency of Circulating IL-35(+) Regulatory B Cells are Decreased in a Cohort of Chinese Patients with New-onset Systemic Lupus Erythematosus. *Sci Rep* 2019; 9(1):13210.
25. Badihian S, Shaygannejad V, Soleimani P, Mirmosayyeb O, Samee Z, Manouchehri N, Esmail N. Decreased serum levels of interleukin-35 among multiple sclerosis patients may be related to disease progression. *J Biol Regul Homeost Agents* 2018; 32(5):1249-1253.
26. Guo J, Gu M, Zhang W, Liu Y, Qian C, Deng A. Aberrant IL-35 levels in patients with primary Sjogren's syndrome. *Scand J Immunol* 2018; 88(5):e12718.
27. Chen J, Du J, Han Y, Wei Z. Correlation analysis between IL-35, IL-36gamma, CCL27 and psoriasis vulgaris. *J Dermatolog Treat* 2019:1-4.
28. Fonseca-Camarillo G, Furuzawa-Carballeda J, Yamamoto-Furusho JK. Interleukin 35 (IL-35) and IL-37: Intestinal and peripheral expression by T and B regulatory cells in patients with Inflammatory Bowel Disease. *Cytokine* 2015; 75(2):389-402.
29. Zhang X, Zhang X, Zhuang L, Xu C, Li T, Zhang G, Liu Y. Decreased regulatory T-cell frequency and interleukin-35 levels in patients with rheumatoid arthritis. *Exp Ther Med* 2018; 16(6):5366-5372.
30. Li Y, Yao L, Liu S, Wu J, Xia L, Shen H, Lu J. Elevated serum IL-35 levels in rheumatoid arthritis are associated with disease activity. *J Investig Med* 2019; 67(3):707-710.
31. Maddaloni M, Kochetkova I, Hoffman C, Pascual DW. Delivery of IL-35 by *Lactococcus lactis* Ameliorates Collagen-Induced Arthritis in Mice. *Front Immunol* 2018; 9(2691).
32. Yang H, Wang J, Li Y, Yin ZJ, Lv TT, Zhu P, Zhang Y. CD147 modulates the differentiation of T-helper 17 cells in patients with rheumatoid arthritis. *APMIS* 2017; 125(1):24-31.
33. Li S, Wang Z, Zhang G, Fu J, Zhang X. Interleukin-7 promotes lung-resident CD14(+) monocytes activity in patients with lung squamous carcinoma. *Int Immunopharmacol* 2019; 67(202-210).
34. Hart PH, Vitti GF, Burgess DR, Whitty GA, Royston K, Hamilton JA. Activation of human monocytes by granulocyte-macrophage colony-stimulating factor: increased urokinase-type plasminogen activator activity. *Blood* 1991; 77(4):841-848.
35. Devadas S, Das J, Liu C, Zhang L, Roberts AI, Pan Z, Moore PA, Das G, Shi Y. Granzyme B is critical for T cell receptor-induced cell death of type 2 helper T cells. *Immunity* 2006; 25(2):237-247.

36. Shoshan Y, Shapira I, Toubi E, Frolkis I, Yaron M, Mevorach D. Accelerated Fas-mediated apoptosis of monocytes and maturing macrophages from patients with systemic lupus erythematosus: relevance to in vitro impairment of interaction with iC3b-opsonized apoptotic cells. *J Immunol* 2001; 167(10):5963-5969.

37. Ekchariyawat P, Thitithanyanont A, Sirisinha S, Utaisinchaoen P. Apoptosis induced by avian H5N1 virus in human monocyte-derived macrophages involves TRAIL-inducing caspase-10 activation. *Innate Immun* 2012; 18(3):390-397.

Table

Table 1. Baseline characteristics of all studied subjects

	Kawasaki disease	Control
Case (n)	33	17
Sex (Male/Female)	16/17	8/9
Age (years)	4.6±1.2	4.1±1.9
WBC (×10 ⁹ /L)	14.21±3.86	6.29 ±2.73
Monocytes (×10 ⁹ /L)	4.71±1.58	1.98±0.44
Platelet (×10 ⁹ /L)	413±97.4	232±62.8
ESR (mm/hr)	46.3±11.7	10.1±3.5
C-reaction protein (mg/L)	54.2±15.8	4.11±0.38

WBC: white blood cells; ESR: erythrocyte sedimentation rate

Figures

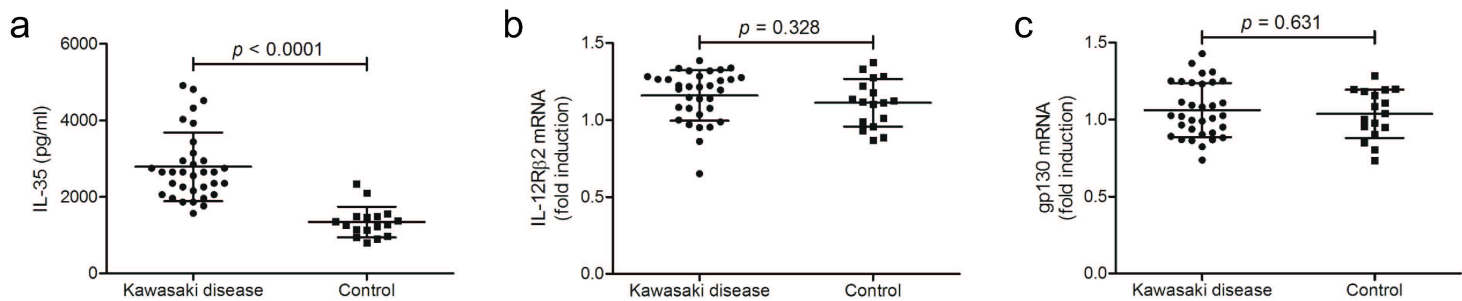


Figure 1

Interleukin (IL)-35 concentration in the plasma and IL-35 receptor mRNA relative level in CD14+ monocytes in patients with Kawasaki disease (n=33) and controls (n=17). Plasma IL-35 concentration

was measured by enzyme linked immunosorbent assay. mRNA corresponding to IL-35 receptor subunits, including IL-12R β 2 and gp130, in purified CD14⁺ monocytes were semi-quantified by real-time reverse transcriptional polymerase chain reaction. (a) IL-35 concentration was elevated in the plasma from patients with Kawasaki disease when compared with controls. There were no significant differences of (b) IL-12R β 2 or (c) gp130 mRNA relative level between patients with Kawasaki disease and controls. Student's t test was used for comparison. Individual level of each subject was shown. The horizon line presented mean, and error bar presented standard deviation.

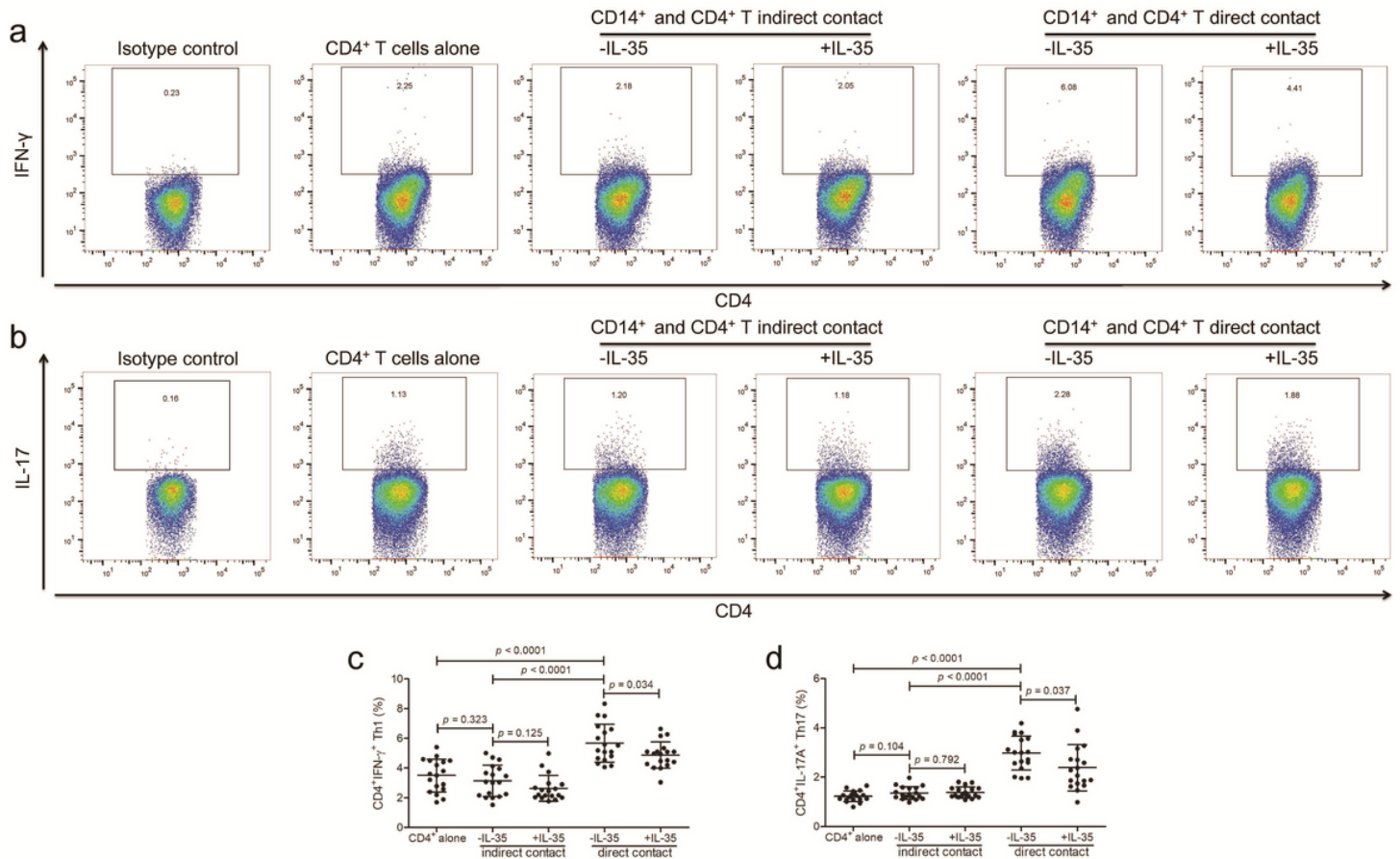


Figure 2

Recombinant interleukin (IL)-35 stimulation to CD14⁺ monocytes induced naïve CD4⁺ T cell activation in patients with Kawasaki disease (n=18). CD14⁺ monocytes and CD4⁺ T cells were purified from peripheral bloods of Kawasaki disease patients. CD14⁺ monocytes were stimulated with recombinant human IL-35 (50ng/ml) and 1 \times lipopolysaccharide for 24 hours. Direct contact and indirect contact co-culture system was set up between 105 of CD14⁺ monocytes and 105 of autologous CD4⁺ T cells. In the last 12 hours of co-culture, phorbol 12-myristate 13-acetate (50ng/ml), ionomycin (1 μ g/ml), and Brefeldin A (10 μ g/ml) were added. Cells were harvested 48 hours post co-culture, and were stained with anti-CD4, anti-interferon- γ (IFN- γ), and anti-IL-17A for flow cytometry analysis. The isotype control was used for separation of positive and negative cells of IFN- γ and IL-17A. Typical flow dots analyses for (a) CD4⁺IFN- γ ⁺ Th1 cells and (b) CD4⁺IL-17A⁺ Th17 cells in direct contact and indirect contact co-culture systems. (c) CD4⁺IFN- γ ⁺ Th1 and (d) CD4⁺IL-17A⁺ Th17 percentage was elevated in direct contact co-culture system

when compared with in indirect contact co-culture system or in CD4+ T cell cultured an lone. However, there was no significant difference of (c) Th1 or (d) Th17 percentage between CD4+ T cell cultured alone and CD14+/CD4+ indirect contact co-culture system. IL-35 stimulation to CD14+ monocytes down-regulated (c) Th1 and (d) Th17 percentage in direct contact co-culture system, but not in indirect contact co-culture system. Paired t test was used for comparison. Individual level of each subject was shown. The horizon line presented mean, and error bar presented standard deviation.

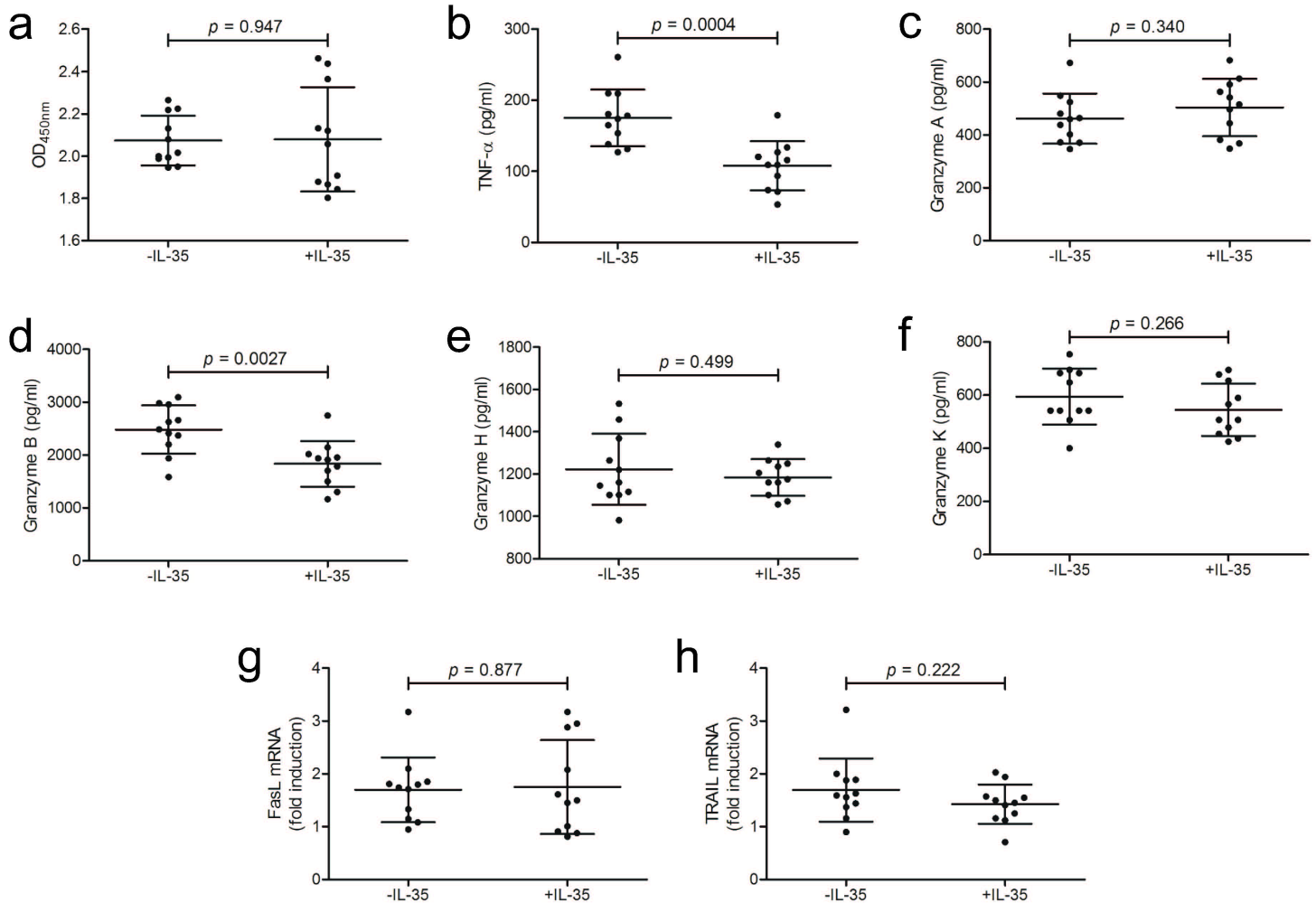


Figure 3

Recombinant human interleukin (IL)-35 stimulation to proliferation, cytokine/granzyme production, and death ligands mRNA expression in CD14+ monocytes from patients with Kawasaki disease (n=11). CD14+ monocytes from peripheral bloods of patients with Kawasaki disease were stimulated with recombinant human IL-35 (50ng/ml) and 1 \times lipopolysaccharide for 24 hours. (a) Cellular proliferation was measured by Cell Counting Kit-8 (CCK-8). CD14+ monocytes proliferation, which presented by OD450nm, was comparable between cells with and without IL-35 stimulation. (b) Tumor necrosis factor- α (TNF- α) and granzyme production, including (c) granzyme A, (d) granzyme B, (e) granzyme H, and (f) granzyme K in cultured supernatants was measured by enzyme linked immunosorbent assay. (b) TNF- α and (c) granzyme B concentration in cultured supernatants was decreased in response to IL-35 stimulation. (c) Granzyme A, (e) granzyme H, and (f) granzyme K concentration was comparable between CD14+

monocytes with and without IL-35 stimulation. mRNA corresponding to (g) Fas ligand (FasL) and (h) TNF-related apoptosis-inducing ligand (TRAIL) was semi-quantified by real-time reverse transcriptional polymerase chain reaction. There were no significant differences of (g) FasL or (h) TRAIL mRNA relative level between CD14+ monocytes with and without IL-35 stimulation. Paired t test was used for comparison. Individual level of each subject was shown. The horizon line presented mean, and error bar presented standard deviation.

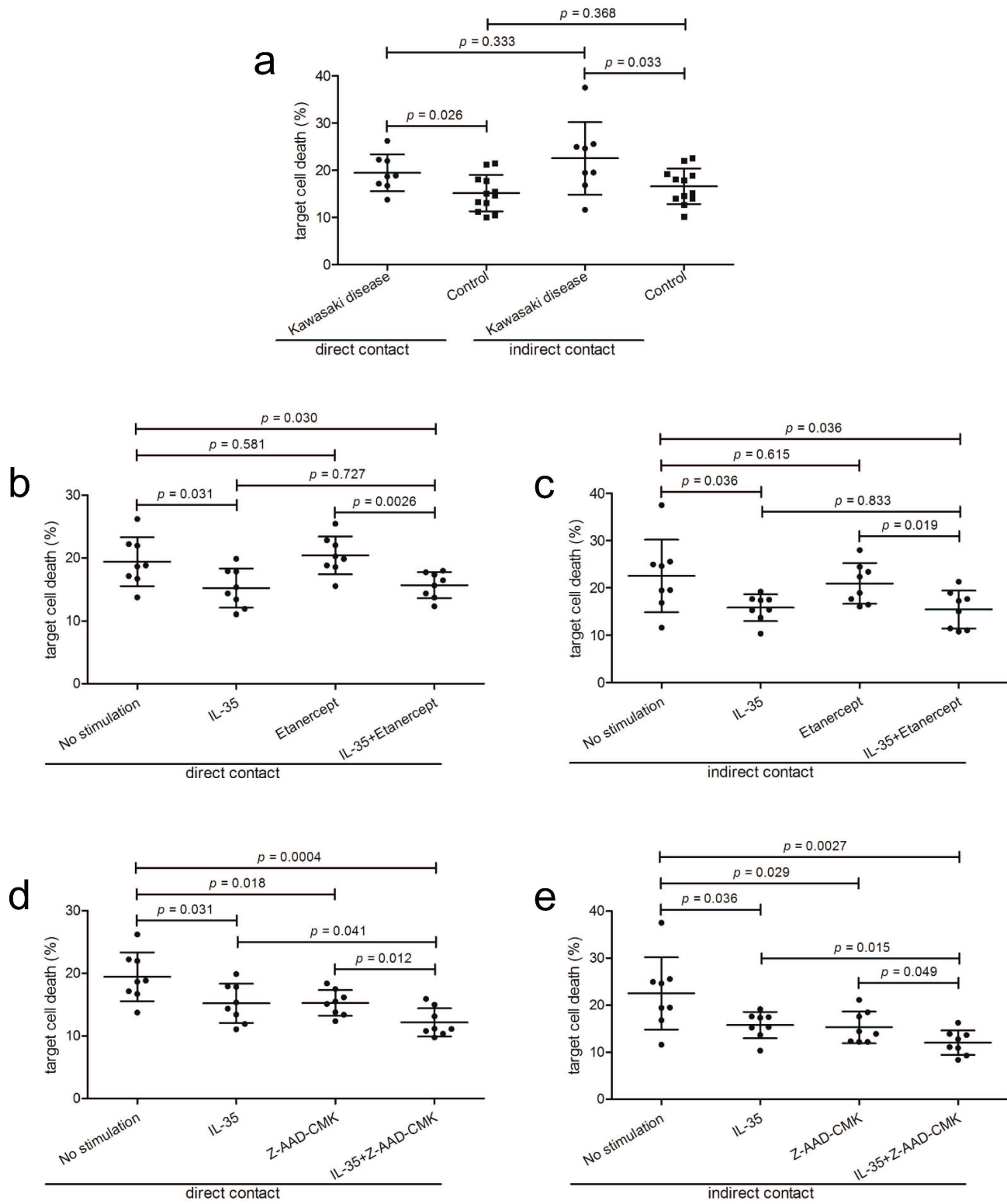


Figure 4

Recombinant human interleukin (IL)-35 stimulation to CD14⁺ monocytes induced human umbilical vein endothelial cells (HUVECs) death. CD14⁺ monocytes were purified from peripheral bloods of patients with Kawasaki disease (n=8) and controls (n=12). 105 of CD14⁺ monocytes were co-cultured with 105 of HUVECs in both direct and indirect contact manners. (a) CD14⁺ monocytes from controls induced increased target HUVECs death in both direct and indirect contact co-culture systems. There were no significant differences of target HUVECs death between direct and indirect contact co-culture system. (b~e) CD14⁺ monocytes from Kawasaki disease (n=8) were stimulated with recombinant human IL-35 and 1×lipopolysaccharide for 24 hours. 105 of IL-35-stimulated CD14⁺ monocytes were co-cultured in direct contact or in indirect contact with 105 of HUVECs, in the presence or absence of etanercept (TNF antagonist) or Z-AAD-CMK (granzyme B inhibitor) stimulation. Etanercept treatment did not induced CD14⁺ monocytes-mediated target cell death or enhanced the suppression function of IL-35 stimulation in (b) direct contact or (c) indirect contact co-culture system. Z-AAD-CMK stimulation not only inhibited CD14⁺ monocytes-induced HUVECs death but also further dampened the suppression function of IL-35 in (d) direct contact and (e) indirect contact co-culture system. Tukey test was used for comparison. Individual level of each subject was shown. The horizon line presented mean, and error bar presented standard deviation.