

Changes in Frailty among Community-Dwelling Older Chinese Adults and its Predictors: Evidence from a Two-Year Longitudinal Study

Bo Ye

Fudan University School of Public Health <https://orcid.org/0000-0002-4088-5734>

Hao Chen (✉ haochen18@fudan.edu.cn)

<https://orcid.org/0000-0002-7886-7822>

Limei Huang

Songjiang Center of Disease Prevention and Control, Shanghai

Ye Ruan

Shanghai Municipal Center for Disease Control and Prevention

Shige Qi

The National Center for Chronic and Noncommunicable Disease Control and Prevention

Yanfei Guo

Shanghai Municipal Center for Disease Control and Prevention

Zhezhou Huang

Shanghai Municipal Center for Disease Control and Prevention

Shuangyuan Sun

Shanghai Municipal Center for Disease Control and Prevention

Xiuqin Chen

Songjiang Center of Disease Prevention and Control, Shanghai

Yan Shi

Shanghai Municipal Center for Disease Control and Prevention

Junling Gao

Fudan University School of Public Health

Yonggen Jiang

Songjiang Center of Disease Prevention and Control, Shanghai

Research article

Keywords: frailty, frailty index, change of frailty, transitions, lifestyle, predictors, older adults, community-based

Posted Date: December 13th, 2019

DOI: <https://doi.org/10.21203/rs.2.18814/v1>

License:  This work is licensed under a Creative Commons Attribution 4.0 International License.

[Read Full License](#)

Version of Record: A version of this preprint was published at BMC Geriatrics on April 10th, 2020. See the published version at <https://doi.org/10.1186/s12877-020-01530-x>.

Abstract

Background: Understanding the characteristics related to frailty transitions will allow for better future health practice and healthcare strategies. We evaluated the changes in frailty among community-dwelling older adults and to examine the predictors of the changes in frailty.

Methods: A total of 4050 community residents aged ≥ 60 years were recruited in 2015 with follow-up after 2 years. At baseline, a multiple deficits approach was used to construct the Frailty Index (FI) according to the methodology of FI construction, and sociodemographic characteristics and lifestyles were also collected. The transitions in frailty between baseline and 2-year follow-up were evaluated. Multinomial logistic regressions were used to examine associations between predictors and the changes of frailty, adjusting for all of the covariates.

Results: Of all of the 3988 participants at baseline, those with frailty status of robust, prefrail, and frail were 79.5%, 16.4%, and 4.1%, and these changed to 68.2%, 23.0%, and 8.8% after 2 years with 127 deceased and 23 dropped out. Twelve kinds of transitions from baseline of the three frailty statuses to four outcomes at follow-up (including death) significantly differed within each of gender and age group, as well between genders and age groups. Among these, 7.8% of prefrail or frail elders improved, 70.0% retained their frailty status, and 22.2% of robust or prefrail elders worsened in frailty status. In multivariable models, age was significantly associated with changes in frailty except for in the frail group; higher educational level and working predicted a lower risk of robust worsening. Of the lifestyle predictors, no shower facilities at home predicted a higher risk of robust worsening; more frequent physical exercise predicted a lower risk of robust worsening and a higher chance of frailty improvement; more frequent neighbor interaction predicted a lower risk of robust worsening and prefrail worsening; and more frequent social participation predicted a higher chance of prefrail improvement.

Conclusions: The status of frailty was reversible among community-dwelling elderly, and sociodemographic and lifestyle factors were related to changes in frailty. These findings help health practitioners to recognize susceptible individuals in a community and provide health promotional planning to target aged populations.

Background

Frailty is an unstable status with the age-related loss of physiological reserves and disorders in homeostatic systems.[1, 2] The presence of frailty is not only symptomatic in older individuals, but it also renders them more prone to downstream changes in long-term health outcomes, such as disability, hospitalization, institutionalization, and mortality.[1, 3–6] In the absence of a gold standard, the two approaches most widely used are frailty phenotype (FP)[1] and frailty index (FI).[7] FP is defined on the basis of weight loss, exhaustion, physical activity, walk time, and grip strength, while FI is defined as an individual's accumulated proportion of listed health-related deficits. Based on the used definitions, the prevalence of frailty ranges from 4.0–59.1% in community-dwelling older adults,[8] and both FP and FI

can effectively predict adverse outcomes.[9] An exponential correlation has been shown between FI and age,[7, 10] and the heterogeneity of physiological reserves tends to be greater in later life.[11] The approach of FI represents a continuous status of health,[12] which is more likely to demonstrate the dynamic nature of frailty in the general aged population. Frailty among older adults is generally agreed to be a dynamic status[13–15] that is inevitable with increasing age but reversible,[16, 17] and it may represent an intermediate stage between healthiness and the end of life as a biological age.[1, 10] It is conceivable that FI could also represent the cumulative effect of multiple individuals and environmental factors from a health ecological perspective. Understanding the characteristics related to frailty transitions will allow for better future health practice and healthcare strategies.

Several studies have reported on the natural transitions in frailty status and their factors, which are mostly associations with sociodemographic factors and health status.[17–24] For instance, those who are older,[17, 19, 23, 24] have fewer years of education,[16] have diabetes and previous stroke,[17] have poor functional performance,[19, 21, 24] and have cognitive impairment[22] are associated with frailty worsening. These findings are helpful for health practitioners to recognize susceptible individuals, though they seem inadequate to provide health promotional planning for community aged populations. Identifying the social and behavioral factors that may worsen or improve frailty would contribute to establishing appropriate measures to prevent or delay frailty progression in a broader-aged population. Numerous studies have shown an association between lifestyle factors and frailty.[25–28] However, few studies have examined the relationship between potential social and behavioral factors and changes in frailty.

Recently, a longitudinal study provided evidence that older Chinese living in communities that have a higher percentage of green space had a higher likelihood of improvement in frailty status, and physical activity presented a mediation effect.[29] It is widely recognized that there are close associations between social and behavioral factors and health outcomes, and various studies have demonstrated them to be effective interventions for the frail elderly, including physical exercise and social support.[2, 30–32] It is reasonable to believe that an individual's lifestyle has an important influence on changes in frailty. Moreover, a 15-year longitudinal study showed that an index constructed by multiple lifestyle protective factors is associated with a lower risk of worsening frailty and a greater chance of recovery among Chinese community-dwelling older adults.[33] However, the independent effects of each factor are unknown, and additional lifestyle factors that are easy to modify need to be explored and their protective effects on frailty tested in future studies.

Based on these considerations, we investigated how changes in frailty occurred among community-dwelling older Chinese through a 2-year cohort study, and lifestyle factors associated with changes in frailty were identified.

Methods

Study Design and Participants

This was a longitudinal observational study of Chinese older adults living in the community of Shanghai. A total of 4050 participants aged ≥ 60 years were originally recruited for an investigation of chronic diseases and geriatric syndromes during 2015 (baseline) from Shanghai. After eliminating invalid answers to questionnaires, the valid response proportion was 98.5% (3988/4050). Multi-stage random sampling was used to select subjects. Two of 11 streets were randomly selected, and then four communities were randomly selected from each street. Simple random sampling was used to select family addresses in which older adults aged ≥ 60 years lived in through a household registration information system. Residents aged ≥ 60 years who lived in the community for at least 6 months of the year from the selected families were all approached to participate in the investigation. Written informed consent was obtained from each study participant, and the Research Ethics Committee of the Division for the Prevention and Control of Chronic Non-communicable Diseases, China Center for Disease Control and Prevention, approved the study protocol. Finally, the average age and its standard deviation (SD) of participants was 69.38 (7.06), with 43.5% male, 79.8% married, and more than half never educated (as shown in Table 1). During the next 2 years, there were 127 deaths and 23 participants lost to follow-up.

Frailty Index Construction and Frailty Transitions

According to the methodology of FI construction, a multiple deficits approach was used to construct the Frailty Index. Deficits were defined as “symptoms, signs, disabilities, and diseases,” the prevalence of which must increase with age.[34] Thirty-six eligible items were eventually selected covering the self-reported presence of current diseases (5 items), cognitive and mental symptoms (9 items), ability in the activities of daily living (15 items), as well as physical and neurological signs (7 items) (Details in Appendix 1). All of the items for FI were dichotomized into the presence (1) or absence (0) of a frailty deficit. The FI was calculated as the proportion of the number of deficits for an individual to the maximum total number of deficits. According to previous studies,[23, 35] we categorized the FI score into a three-level variable: robust ($FI \leq 0.10$), prefrail ($0.10 < FI \leq 0.21$), and frail ($FI > 0.21$). Frailty transitions were included for the three kinds of frailty status (robust, prefrail, and frail) changing into to each other among survivors after 2 years, which were defined as worsening, stability, or improvement. Outcomes also included death from each of the three kinds of frailty status.

Predictors

Sociodemographic factors included age (Years), gender (Male/Female), educational level (Illiteracy/Primary school/Junior high school or above), marital status (Married/Unmarried; ‘Unmarried’ included never married, divorced, and widowed), and working status (Yes/No; ‘Yes’ means an individual still works for payment or for free, such as a volunteer, and ‘No’ means an individual has retired or has no work).

Lifestyle factors included living alone (Yes/No), has a shower facility at home (Yes/No), annual physical examination (Yes/No), cigarette smoking (Current smoker, Former smoker, Nonsmoker), alcohol intake (Yes/No; ‘Yes’ means an individual drinks sometimes or more often, and ‘No’ means an individual never drinks), daily tea (Yes/No), reading (Yes/No; ‘Yes’ means an individual reads books or newspapers

sometimes or more often, and 'No' means an individual almost never reads), plays cards or mahjong (Yes/No; 'Yes' means an individual plays cards or mahjong sometimes or more often, and 'No' means an individual almost never plays), physical exercise (Almost never/Several times per week/Everyday; 'Almost never' means an individual does exercises over 10 minutes for only several times per month or less), meeting with children (Almost never/Several times per week/Everyday; 'Almost never' means an individual meets with children for only several times per month or less), neighbor interaction (Almost never/Several times per week/Everyday; 'Almost never' means an individual interacts with neighbors over 10 minutes for only several times per month or less), and social participation (Almost never/Several times per month/Several times per week; 'Almost never' means an individual takes part in various social activities for several times per year or never). The number and proportion of each lifestyle variable is presented in Table 1.

Statistical Analysis

Descriptive statistics for demographic and lifestyle variables are presented as the frequency and percentage, continuous variables are described as means and SD, and the Chi-square test was used to evaluate the distribution of the three kinds of frailty status at baseline between groups according to demographics and lifestyle. The health outcomes after 2 years and the three kinds of frailty transitions were also described and compared according to gender and age. Multinomial logistic regressions were used to explain whether the 2-year change of frailty was associated with lifestyle factors, with unadjusted and adjusted coefficients both reported. Windows-based SPSS version 22.0 (SPSS Inc., Chicago, IL, USA) was used for all of the statistical analysis, and a P value of less than 0.05 was considered to be statistically significant.

Results

Table 1 shows the participants' sociodemographic and lifestyle factors, and a comparison of these factors among the three frailty statuses at baseline. Prefrail and frail female elders were more common than males, while there were similar proportions of robust male and female elders. The average age of the frail, prefrail, and robust elders significantly increased. Except for meeting with children, all of the lifestyle factors were correlated with the frailty status at baseline. As expected, lifestyle protective factors included married, higher educational level, working, daily tea, reading, playing cards or mahjong, physical exercise, neighbor interaction, and social participation; and risk factors were live alone, lacking shower facilities at home, and no annual physical examination. However, there were higher proportions of current smokers and alcohol drinkers among the robust elders.

There were twelve kinds of transitions from baseline of the three frailty statuses to 2-year follow-up of four outcomes (including 127 deaths). Figure 1 shows the results of frailty status transitions according to gender (a) and age (b). The frailty status transitions significantly differed within each of gender and age group and also significantly differed between gender and age groups. Table 2 shows the changes in frailty among the 2-year survivors: 7.8% (299/3838), 70.0% (2687/3838), and 22.2% (852/3838) of elders

improved (improvement), stayed the same (stability), and worsened (worsening) in frailty status, respectively. Among the baseline robust and prefrail elders, female elders (robust: 29.3% vs. 17.2%; prefrail: 21.0% vs. 16.3%), and older elders (robust: 49.8% vs. 34.4% vs. 16.6%) had a higher risk of frailty worsening, while there were no statistically significant differences between gender and age groups among the baseline frail elders. In further multivariate analyses, there were no significant associations between changes in frailty and gender, and the associations between age and the three changes in frailty were significant except for in the frail group.

Table 3 shows the results of univariate (unadjusted models) and multivariate (adjusted models) analyses between lifestyle predictors and changes in frailty. Unadjusted and adjusted ORs and their 95% CI were used to estimate the risk of worsening and improvement compared to stability among the three kinds of baseline frailty status, respectively. In the unadjusted models, except for annual physical examination and meeting with children, all of the lifestyle factors were associated with robust worsening, while only neighbor interaction was associated with prefrail worsening. In addition, marital status, education, living alone, shower facilities at home, smoking, daily tea, reading, and social participation were associated with prefrail improvement, and physical exercise and neighbor interaction were associated with frail improvement.

After all of the variables were entered into the model and additional adjustments for age and gender were applied, associations between frailty transitions and several factors weakened or disappeared. In particular, 1) those robust elders who had higher educational levels (compared with illiteracy, primary school: OR = 0.63, 95% CI: 0.51 ~ 0.78; junior high school or above: OR = 0.46, 95% CI: 0.33 ~ 0.64), still at work (OR = 0.60, 95% CI: 0.45 ~ 0.80), had more frequent physical exercise (compared with almost never, several times per week: OR = 0.73, 95% CI: 0.55 ~ 0.96; everyday: OR = 0.72, 95% CI: 0.58 ~ 0.90) and more neighbor interaction (compared with almost never, everyday: OR = 0.67, 95% CI: 0.51 ~ 0.87) predicted a lower risk of robust worsening, while having no shower facilities at home (OR = 1.39, 95% CI: 1.02 ~ 1.90) predicted a higher risk of robust worsening; 2) those prefrail elders who had more neighbor interaction (compared with almost never, several times per week: OR = 0.30, 95% CI: 0.13 ~ 0.74; everyday: OR = 0.52, 95% CI: 0.27 ~ 1.00) predicted a lower risk of prefrail worsening; 3) only more frequent social participation (compared with almost never, several times per week: OR = 2.14, 95% CI: 1.08 ~ 4.24) predicted a higher chance of prefrail improvement; and 4) among frail elders, only more physical exercise (compared with almost never, everyday: OR = 4.03, 95% CI: 1.42 ~ 11.46) predicted a higher chance of frailty improvement.

Discussion

The present study showed that frailty status can deteriorate to a worse state (22.2%) but can also turn back to a better state (7.8%), though the majority stayed in the same state (70.0%). These results are similar to previous studies,[33, 36, 37] and continue to support the notion that frailty is a dynamic and reversible status in later life.[38] With increasing age, the risk of being frailty and frailty worsening were both higher. Older females have widely been found to have a higher prevalence of frailty,[2, 8, 39] which also showed in our study. In addition, the decline rate among robust and prefrail female elders was found

to be higher than in males. However, after adjusting for lifestyle factors, it seemed that few differences in changes of frailty were consistent with previous studies.[18, 37] These findings suggest that females probably have worse health but a more protective lifestyle, which provides a reason for the health-survival paradox. A higher educational level, known to promote better psychological well-being and less dependence,[40] was found to be associated with decreasing frailty among baseline robust elders in a previous study[22] and in the current study.

This study found that, beyond stability, improvement in frailty status is possible, and those elders who were frail at baseline improved by 18.3% in males and 36.0% in females during a period of 2 years. Older adults who had physical exercise everyday had a four-fold chance of frailty improvement compared to those who almost never exercised, and those who had frequent physical exercise had a nearly 27% lower risk of robust worsening in this study. Various physical activities are associated with health, and a number of random control trials have demonstrated the benefit of exercise intervention for the frail elderly.[30–32] These encouraging findings support the idea that the maintenance of robustness and improvements in frailty status can be promoted through daily physical exercise.

Among the robust elders at baseline, those who worked and had more frequent neighbor interaction had a 40% and 33% decreased risk of frailty worsening, respectively. A comparison study found that older workers experience a greater sense of mastery than retired elders,[41] which may encourage additional correct choices related to health.[42] A sense of mastery, as a powerful psychological resource, is strongly linked to positive mental and physical health outcomes.[42] A lower frequency of social interactions is associated with feelings of loneliness and depression,[43] and neighbor interactions are also an important way for older adults to acquire social resources (e.g., health information, emotional and instrumental support), which may serve as important buffers for frailty worsening. This is consistent with the decreased frailty worsening by frequent neighbor interaction among prefrail elders. In addition, taking part in social activities frequently seemed to be beneficial for prefrail elders. The presence of health problems is more likely to attract their attention, and those who participated in social activities frequently may have more chances to access health knowledge, increase physical activity, and promote interpersonal relationships, all of which favor health.[28]

Finally, we also found that baseline robust elders whose home does not have shower facilities predicted a higher risk of frailty worsening compared to those with showers. A lack of shower facilities at home could be an obstacle to personal hygiene, especially for older people, which may decrease their quality of life. However, it could simply reflect poor indoor conditions, which are likely to lead to adverse health outcomes.

Strengths And Limitations

Associations between lifestyle and frailty has been widely reported, but its influence on changes in frailty is unclear. This study is one of the few that has explored the relationship between various types of lifestyle factors and changes in frailty. This was a large longitudinal observational study with a very low

dropout rate: 0.6% (n = 23), and to the best of our knowledge, this study is one of a few to demonstrate a relationship between lifestyle factors and changes in frailty.

However, several limitations should be also mentioned. First, all of the analytical data in the study were from self-reported measures, instead of more accurate laboratory and clinical tests. Even so, self-reported data have been suggested to be valid by numerous publications. Second, assessments for each lifestyle factor only referred to a single aspect, and many other aspects of these lifestyle factors have not been considered. For instance, 1) other facilities or characteristics related to assisted ageing could be considered in the assessment of indoor conditions for the elderly; 2) other dietary habits (e.g., vegetable intake, fruit intake) could also be included; and 3) for social participation (physical exercise, interactions, and activities), the frequency of participation is important, but the satisfaction and style of participation should not be ignored [44, 45]; these are potential reasons for the different results among different frailty statuses. Finally, the study sample was drawn from the Shanghai area, which is one of the most developed cities in China, and it might not represent other parts of China.

Conclusions

This longitudinal population-based study suggests that the status of frailty was reversible among community-dwelling elderly, and lifestyle protective factors were likely to decrease the risk of frailty worsening. Although several health behaviors were not separately significantly related to changes in frailty, cumulative protective factors are associated with a lower risk of frailty deterioration or mortality, as well as a greater chance of recovery.[33] Of the lifestyle predictors, many more factors were found to be associated with changes in frailty among robust and prefrail elders than frail elders, which suggests that early identification and intervention have a bigger chance of maintaining or delaying declines related to frailty status. These findings help health practitioners to recognize susceptible individuals in a community and provide health promotional planning to target aged populations.

Declarations

Acknowledgements

We thank the contributions of the investigators during the 2 years, and thank LetPub (www.letpub.com) for its linguistic assistance during the preparation of this manuscript.

Funding

This work was supported by the National key R&D Program of China (grant number: 2018YFC2002000 & 2018YFC2002001).

Availability of data and materials

The data are used with appropriate permissions for the current study, and so are not publicly available.

Authors' contributions

JG, YJ and LH designed the study and obtained the data, BY and HC undertook the analysis supervised by JG and YR and wrote the manuscript, SQ and YS organized, and YG, ZH, SS and XC performed the survey, all authors read the final manuscript and agree with the text.

Ethics approval and consent to participate

The Research Ethics Committee of the Division for the Prevention and Control of Chronic Non-communicable Diseases, China Center for Disease Control and Prevention, approved the study protocol.

Consent for publication

Not applicable.

Competing Interests

None of the authors have any conflicts of interest to declare.

Abbreviations

CI: Confidence interval; FI: frailty index; FP: Frailty phenotype; OR: Odds ratio; SD: Standard deviation; SPSS: Statistical Package for the Social Sciences; USA: United States of America.

References

1. Fried LP, Tangen CM, Walston J, Newman AB, Hirsch C, Gottdiener J, Seeman T, Tracy R, Kop WJ, Burke G *et al*: Frailty in older adults: evidence for a phenotype. *J Gerontol A Biol Sci Med Sci* 2001, 56(3):M146-56.
2. Clegg A, Young J, Iliffe S, Rikkert MO, Rockwood K: Frailty in elderly people. *Lancet* 2013, 381(9868):752-62.
3. Rockwood K, Howlett SE, MacKnight C, Beattie BL, Bergman H, Hebert R, Hogan DB, Wolfson C, McDowell I: Prevalence, attributes, and outcomes of fitness and frailty in community-dwelling older adults: report from the Canadian study of health and aging. *J Gerontol A Biol Sci Med Sci* 2004, 59(12):1310-7.
4. Song X, Mitnitski A, Rockwood K: Prevalence and 10-Year Outcomes of Frailty in Older Adults in Relation to Deficit Accumulation. *Journal of the American Geriatrics Society* 2010, 58(4):681-7.
5. Romero-Ortuno R, Kenny RA: The frailty index in Europeans: association with age and mortality. *Age Ageing* 2012, 41(5):684-9.
6. Hyde Z, Flicker L, Smith K, Atkinson D, Fenner S, Skeaf L, Malay R, Giudice DL: Prevalence and incidence of frailty in Aboriginal Australians, and associations with mortality and disability. *Maturitas* 2016, 87:89-94.

7. Mitnitski AB, Mogilner AJ, Rockwood K: Accumulation of Deficits as a Proxy Measure of Aging. *The Scientific World JOURNAL* 2001, 1:323-36.
8. Collard RM, Boter H, Schoevers RA, Oude Voshaar RC: Prevalence of Frailty in Community-Dwelling Older Persons: A Systematic Review. *Journal of the American Geriatrics Society* 2012, 60(8):1487-92.
9. Malmstrom TK, Miller DK, Morley JE: A Comparison of Four Frailty Models. *Journal of the American Geriatrics Society* 2014, 62(4):721-6.
10. Mitnitski AB, Graham JE, Mogilner AJ, Rockwood K: Frailty, fitness and late-life mortality in relation to chronological and biological age. *BMC geriatrics* 2002, 2(1):1.
11. WHO Clinical Consortium on Healthy Ageing. Report of consortium meeting 1–2 December 2016 in Geneva, Switzerland. Geneva: World Health Organization; 2017 (WHO/FWC/ALC/17.2). Licence: CC BY-NC-SA 3.0 IGO.
12. Rockwood K, Mitnitski A: Frailty in relation to the accumulation of deficits. *J Gerontol A Biol Sci Med Sci* 2007, 62(7):722-7.
13. Abellan Van Kan G, Rolland Y, Bergman H, Morley JE, Kritchevsky SB, Vellas B: The I.A.N.A. task force on frailty assessment of older people in clinical practice. *Journal of Nutrition, Health and Aging* 2008, 12(1):29-37.
14. Lang P-O, Michel J-P, Zekry D: Frailty Syndrome: A Transitional State in a Dynamic Process. *Gerontology* 2009, 55(5):539-49.
15. Morley JE, Vellas B, Abellan Van Kan G, Anker SD, Bauer JM, Bernabei R, Cesari M, Chumlea WC, Doehner W, Evans J *et al*: Frailty Consensus: A Call to Action. *Journal of the American Medical Directors Association* 2013, 14(6):392-7.
16. Espinoza SE, Jung I, Hazuda H: Frailty Transitions in the San Antonio Longitudinal Study of Aging. *Journal of the American Geriatrics Society* 2012, 60(4):652-60.
17. Lee JSW, Auyeung T-W, Leung J, Kwok T, Woo J: Transitions in Frailty States Among Community-Living Older Adults and Their Associated Factors. *Journal of the American Medical Directors Association* 2014, 15(4):281-6.
18. Ottenbacher KJ, Graham JE, Al Snih S, Raji M, Samper-Ternent R, Ostir GV, Markides KS: Mexican Americans and Frailty: Findings From the Hispanic Established Populations Epidemiologic Studies of the Elderly. *American Journal of Public Health* 2009, 99(4):673-9.
19. Fallah N, Mitnitski A, Searle SD, Gahbauer EA, Gill TM, Rockwood K: Transitions in frailty status in older adults in relation to mobility: a multistate modeling approach employing a deficit count. *J Am Geriatr Soc* 2011, 59(3):524-9.
20. Alencar MA, Dias JMD, Figueiredo LC, Dias RC: Transitions in Frailty Status in Community-Dwelling Older Adults. *Topics in Geriatric Rehabilitation* 2015, 31(2):105-12.
21. Pollack LR, Litwack-Harrison S, Cawthon PM, Ensrud K, Lane NE, Barrett-Connor E, Dam T-T: Patterns and Predictors of Frailty Transitions in Older Men: The Osteoporotic Fractures in Men Study. *Journal of the American Geriatrics Society* 2017, 65(11):2473-9.

22. Trevisan C, Veronese N, Maggi S, Baggio G, Toffanello ED, Zambon S, Sartori L, Musacchio E, Perissinotto E, Crepaldi G *et al*: Factors Influencing Transitions Between Frailty States in Elderly Adults: The Progetto Veneto Anziani Longitudinal Study. *Journal of the American Geriatrics Society* 2017, 65(1):179-84.
23. Thompson MQ, Theou O, Adams RJ, Tucker GR, Visvanathan R: Frailty state transitions and associated factors in South Australian older adults. *Geriatr Gerontol Int* 2018, 18(11):1549-55.
24. Setiati S, Laksmi PW, Aryana I, Sunarti S, Widajanti N, Dwipa L, Seto E, Istanti R, Ardian LJ, Chotimah SC: Frailty state among Indonesian elderly: prevalence, associated factors, and frailty state transition. *BMC Geriatr* 2019, 19(1):182.
25. Poli S, Cella A, Puntoni M, Musacchio C, Pomata M, Torriglia D, Vello N, Molinari B, Pandolfini V, Torrigiani C *et al*: Frailty is associated with socioeconomic and lifestyle factors in community-dwelling older subjects. *Aging Clin Exp Res* 2017, 29(4):721-8.
26. Brinkman S, Voortman T, Kieft-de JJ, van Rooij F, Ikram MA, Rivadeneira F, Franco OH, Schoufour JD: The association between lifestyle and overall health, using the frailty index. *Arch Gerontol Geriatr* 2018, 76:85-91.
27. Tanimura C, Matsumoto H, Tokushima Y, Yoshimura J, Tanishima S, Hagino H: Self-care agency, lifestyle, and physical condition predict future frailty in community-dwelling older people. *Nurs Health Sci* 2018, 20(1):31-8.
28. Ye B, Gao J, Fu H: Associations between lifestyle, physical and social environments and frailty among Chinese older people: a multilevel analysis. *BMC Geriatr* 2018, 18(1):314.
29. Yu R, Wang D, Leung J, Lau K, Kwok T, Woo J: Is Neighborhood Green Space Associated With Less Frailty? Evidence From the Mr. and Ms. Os (Hong Kong) Study. *Journal of the American Medical Directors Association* 2018, 19(6):528-34.
30. Ng TP, Feng L, Nyunt MSZ, Feng L, Niti M, Tan BY, Chan G, Khoo SA, Chan SM, Yap P *et al*: Nutritional, Physical, Cognitive, and Combination Interventions and Frailty Reversal Among Older Adults: A Randomized Controlled Trial. *The American Journal of Medicine* 2015, 128(11):1225-1236.e1221.
31. Luger E, Dorner TE, Haider S, Kapan A, Lackinger C, Schindler K: Effects of a Home-Based and Volunteer-Administered Physical Training, Nutritional, and Social Support Program on Malnutrition and Frailty in Older Persons: A Randomized Controlled Trial. *Journal of the American Medical Directors Association* 2016, 17(7):671.e679-671.e616.
32. Tarazona-Santabalbina FJ, Gómez-Cabrera MC, Pérez-Ros P, Martínez-Arnau FM, Cabo H, Tsaparas K, Salvador-Pascual A, Rodríguez-Mañas L, Viña J: A Multicomponent Exercise Intervention that Reverses Frailty and Improves Cognition, Emotion, and Social Networking in the Community-Dwelling Frail Elderly: A Randomized Clinical Trial. *Journal of the American Medical Directors Association* 2016, 17(5):426-33.
33. Wang C, Song X, Mitnitski A, Fang X, Tang Z, Yu P, Rockwood K: Effect of Health Protective Factors on Health Deficit Accumulation and Mortality Risk in Older Adults in the Beijing Longitudinal Study of Aging. *JOURNAL OF THE AMERICAN GERIATRICS SOCIETY* 2014, 62(5):821-8.

34. Searle SD, Mitnitski A, Gahbauer EA, Gill TM, Rockwood K: A standard procedure for creating a frailty index. *BMC geriatrics* 2008, 8(1):24.
35. Hoover M, Rotermann M, Sanmartin C, Bernier J: Validation of an index to estimate the prevalence of frailty among community-dwelling seniors. *Health Reports* 2013, 24(9):10.
36. Liu ZY, Wei YZ, Wei LQ, Jiang XY, Wang XF, Shi Y, Hai H: Frailty transitions and types of death in Chinese older adults: a population-based cohort study. *Clin Interv Aging* 2018, 13:947-56.
37. Martin L, McKenzie K, Ouellette-Kuntz H: Once frail, always frail? Frailty transitions in home care users with intellectual and developmental disabilities. *Geriatr Gerontol Int* 2018, 18(4):547-53.
38. Gill TM, Gahbauer EA, Allore HG, Han L: Transitions between frailty states among community-living older persons. *Arch Intern Med* 2006, 166(4):418-23.
39. He B, Ma Y, Wang C, Jiang M, Geng C, Chang X, Ma B, Han L: Prevalence and Risk Factors for Frailty among Community-Dwelling Older People in China: A Systematic Review and Meta-Analysis. *J Nutr Health Aging* 2019, 23(5):442-50.
40. Santos-Eggimann B, Cuenoud P, Spagnoli J, Junod J: Prevalence of Frailty in Middle-Aged and Older Community-Dwelling Europeans Living in 10 Countries. *The Journals of Gerontology Series A: Biological Sciences and Medical Sciences* 2009, 64A(6):675-81.
41. Nyqvist F, Forsman AK, Cattan M: A comparison of older workers' and retired older people's social capital and sense of mastery. *Scand J Public Health* 2013, 41(8):792-8.
42. Pudrovskaya T, Schieman S, Pearlin LI, Nguyen K: The Sense of Mastery as a Mediator and Moderator in the Association Between Economic Hardship and Health in Late Life. *Journal of Aging and Health* 2016, 17(5):634-60.
43. Domènech-Abella J, Lara E, Rubio-Valera M, Olaya B, Moneta MV, Rico-Urbe LA, Ayuso-Mateos JL, Mundó J, Haro JM: Loneliness and depression in the elderly: the role of social network. *Social Psychiatry and Psychiatric Epidemiology* 2017, 52(4):381-90.
44. Duppen D, Lambotte D, Dury S, Smetcoren AS, Pan H, De Donder L, Consortium DS: Social Participation in the Daily Lives of Frail Older Adults: Types of Participation and Influencing Factors. *J Gerontol B Psychol Sci Soc Sci* 2019, gbz045, <https://doi.org/10.1093/geronb/gbz045>.
45. Kwan RYC, Cheung DSK, Lo SKL, Ho LYW, Katigbak C, Chao Y-Y, Liu JYW: Frailty and its association with the Mediterranean diet, life-space, and social participation in community-dwelling older people. *Geriatric Nursing* 2019, 40(3):320-6.

Tables

Table 1 Description of predictors according to frailty status at baseline.

Predictors	Total n=3988, n (%)	Robust (≤ 0.10) n=3169, n (%)	Prefrail (≤ 0.21) n=656, n (%)	Frail (> 0.21) n=163, n (%)	P value
Gender (Male)		1500 (47.3)	187 (28.5)	49 (30.1)	<0.001
Age, year (Mean \pm SD)	69.38 \pm 7.06	68.17 \pm 6.37	73.23 \pm 7.17	77.47 \pm 8.38	<0.001 ^a
Age group, year					<0.001
60-69	2314 (58.0)	2056 (65.1)	216 (32.9)	33 (20.2)	
70-79	1237 (31.0)	883 (27.9)	297 (45.3)	57 (35.0)	
80+	437 (11.0)	221 (7.0)	143 (21.8)	73 (44.8)	
Marital status (Married)	3181 (79.8)	2645 (83.5)	451 (68.8)	85 (52.1)	<0.001
Educational level					<0.001
Illiteracy	2251 (56.4)	1592 (50.3)	519 (79.1)	140 (85.9)	
Primary school	1176 (29.5)	1069 (33.7)	93 (14.2)	14 (8.6)	
Junior high school or above	561 (14.1)	508 (16.0)	44 (6.7)	9 (5.5)	
Working (Yes)	629 (15.8)	567 (17.9)	58 (8.8)	4 (2.5)	<0.001
Live alone (Yes)	325 (8.1)	218 (6.9)	80 (12.2)	27 (16.6)	<0.001
Shower facility at home (No)	381 (9.6)	248 (7.8)	108 (16.5)	25 (15.3)	<0.001
Annual physical examination (No)	357 (9.0)	249 (7.9)	62 (9.5)	46 (28.2)	<0.001
Cigarette smoking					<0.001
Nonsmoker	2662 (66.8)	2018 (63.6)	514 (78.4)	130 (79.8)	
Past smoker	488 (12.2)	392 (12.4)	74 (11.3)	22 (13.5)	
Current smoker	838 (21.0)	759 (24.0)	68 (10.4)	11 (6.7)	
Alcohol intake (Yes)	749 (18.8)	686 (21.6)	60 (9.1)	3 (1.8)	<0.001
Daily tea (Yes)	1370 (34.4)	1198 (37.8)	149 (22.7)	23 (14.1)	<0.001
Reading (Yes)	595 (14.9)	542 (17.1)	49 (7.5)	4 (2.5)	<0.001
Playing cards or mahjong (Yes)	917 (23.0)	813 (25.7)	97 (14.8)	7 (4.3)	<0.001
Physical exercise					<0.001
Almost never	992 (24.9)	747 (23.6)	166 (25.3)	79 (48.5)	
Several times per week	805 (20.2)	606 (19.1)	166 (25.3)	33 (20.2)	
Everyday	2191 (54.9)	1816 (57.3)	324 (49.4)	51 (31.3)	
Meeting with children					0.073
Almost never	801 (20.0)	636 (20.1)	143 (21.8)	22 (13.5)	
Several times per week	1757 (44.1)	1411 (44.5)	277 (42.2)	69 (42.3)	
Everyday	1430 (35.9)	1122 (35.4)	236 (36.0)	72 (44.2)	
Neighbor interaction					<0.001
Almost never	517 (13.0)	384 (12.1)	96 (14.6)	37 (22.7)	
Several times per week	505 (12.7)	376 (11.9)	103 (15.7)	256 (16.0)	
Everyday	2966 (74.3)	2409 (76.0)	457 (69.7)	100 (61.3)	
Social participation					<0.001
Almost never	2915 (73.1)	2308 (72.8)	474 (72.3)	133 (81.6)	
Several times per month	522 (13.1)	392 (12.4)	107 (16.3)	23 (14.1)	
Several times per week	551 (13.8)	469 (14.8)	75 (11.4)	7 (4.3)	

^a P value for ANOVA.

Table 2 Transitions in frailty status among the survivors according to gender and age.

Characteristics		Frailty transitions during 2 years, n (%)						
		Robust (n=3084, 80.4%)		Prefrail (n=625, 16.3%)			Frail (n=129, 3.4%)	
		Stability	Worsening	Improvement	Stability	Worsening	Improvement	Stability
Gender	Male	1197 (82.8)	249 (17.2)	92 (53.5)	52 (30.2)	28 (16.3)	9 (30.0)	21 (70.0)
	Female	1158 (70.7)	480 (29.3)	157 (34.7)	201 (44.4)	95 (21.0)	41 (41.4)	58 (58.6)
P value		<0.001			<0.001		0.261	
Age, years	60~	1700 (83.4)	338 (16.6)	113 (53.1)	78 (36.6)	22 (10.3)	15 (51.7)	14 (48.3)
	70~	554 (65.6)	291 (34.4)	107 (38.2)	120 (42.9)	53 (18.9)	16 (32.7)	33 (67.3)
	80~	101 (50.2)	100 (49.8)	29 (22.0)	55 (41.7)	48 (36.4)	19 (37.3)	32 (62.7)
P value		<0.001			<0.001		0.238	

Table 3 Multiple logistic regression for changes in frailty.

Predictors	Robust worsening, OR (95%CI)		Prefrail worsening, OR (95%CI)		Prefrail improvement, OR (95%CI)		Frail improvement, OR (95%CI)	
	Unadjusted model ^a	Adjusted model ^b	Unadjusted model ^a	Adjusted model ^b	Unadjusted model ^a	Adjusted model ^b	Unadjusted model ^a	Adjusted model ^b
Gender (Female)	1.99 ^{***} (1.68, 2.37)	1.30 (0.95, 1.79)	0.88 (0.52, 1.48)	0.56 (0.21, 1.52)	0.44 ^{***} (0.30, 0.66)	0.65 (0.28, 1.49)	1.65 (0.69, 3.97)	0.84 (0.19, 3.68)
Age (vs 60~ years)								
70~ years	2.64 ^{***} (2.20, 3.18)	2.10 ^{***} (1.72, 2.58)	1.57 (0.88, 2.78)	1.81 (0.98, 3.34)	0.62* (0.42, 0.91)	0.70 (0.45, 1.07)	0.45 (0.18, 1.16)	0.36 (0.12, 1.14)
80~ years	4.98 ^{***} (3.69, 6.72)	3.30 ^{***} (2.36, 4.60)	3.09 ^{***} (1.68, 5.70)	3.89 ^{***} (1.87, 8.09)	0.36 ^{***} (0.21, 0.62)	0.40 ^{**} (0.21, 0.75)	0.55 (0.22, 1.40)	0.53 (0.15, 1.84)
Marital status (Married)	0.47 ^{***} (0.38, 0.58)	0.83 (0.63, 1.09)	1.03 (0.65, 1.61)	1.29 (0.66, 2.53)	1.66 ^{**} (1.13, 2.45)	0.84 (0.47, 1.50)	0.77 (0.38, 1.57)	1.10 (0.35, 3.47)
Educational level (vs Illiteracy)								
Primary school	0.46 ^{***} (0.38, 0.56)	0.63 ^{***} (0.51, 0.78)	0.88 (0.43, 1.80)	0.98 (0.43, 2.23)	2.11 ^{**} (1.27, 3.50)	1.51 (0.86, 2.67)	0.76 (0.18, 3.18)	0.78 (0.10, 6.01)
Junior high school or above	0.32 ^{***} (0.24, 0.42)	0.46 ^{***} (0.33, 0.64)	1.23 (0.44, 3.47)	1.04 (0.27, 4.04)	3.19 ^{**} (1.50, 6.80)	2.02 (0.80, 5.12)	0.60 (0.11, 3.25)	0.66 (0.07, 6.08)
Working (Yes)	0.42 ^{***} (0.32, 0.55)	0.60 ^{***} (0.45, 0.80)	0.47 (0.17, 1.27)	0.56 (0.20, 1.61)	1.51 (0.84, 2.72)	1.33 (0.71, 2.51)	1.60 (0.22, 11.77)	2.00 (0.15, 27.26)
Live alone (Yes)	1.73 ^{***} (1.28, 2.34)	0.94 (0.63, 1.41)	0.65 (0.33, 1.26)	0.55 (0.22, 1.41)	0.53* (0.30, 0.93)	0.58 (0.26, 1.30)	1.13 (0.58, 3.50)	1.69 (0.39, 7.40)
Shower facility at home (No)	1.91 ^{***} (1.45, 2.53)	1.39* (1.02, 1.90)	0.88 (0.50, 1.55)	0.89 (0.47, 1.70)	0.61* (0.37, 0.99)	0.71 (0.41, 1.24)	0.94 (0.32, 2.77)	1.42 (0.34, 5.87)
Annual physical examination (No)	1.26 (0.94, 1.69)	1.23 (0.89, 1.71)	1.84 (0.91, 3.72)	1.49 (0.69, 3.21)	0.96 (0.479, 1.88)	1.17 (0.56, 2.42)	0.61 (0.25, 1.46)	0.69 (0.23, 2.03)
Cigarette smoking (vs Nonsmoker)								
Former smoker	0.64 ^{**} (0.49, 0.84)	1.01 (0.69, 1.48)	0.57 (0.24, 1.36)	0.33 (0.09, 1.16)	1.72 (0.99, 2.99)	1.22 (0.49, 3.03)	0.49 (0.12, 1.91)	0.64 (0.07, 5.77)
Current smoker	0.40 ^{***} (0.32, 0.81)	0.70 (0.48, 1.01)	1.60 (0.70, 3.65)	1.69 (0.45, 6.30)	3.51 ^{***} (1.85, 6.67)	2.81 (1.00, 7.89)	0.73 (0.13, 4.18)	0.65 (0.06, 7.50)
Alcohol intake (Yes)	0.46 ^{***} (0.36, 0.58)	0.85 (0.63, 1.14)	0.86 (0.36, 2.02)	0.61 (0.20, 1.90)	1.75 (0.96, 3.19)	0.56 (0.24, 1.27)	0.79 (0.07, 8.90)	0.43 (0.02, 12.19)
Daily tea (Yes)	0.56 ^{***} (0.46, 0.67)	1.01 (0.79, 1.29)	0.82 (0.46, 1.47)	0.72 (0.34, 1.55)	2.05 ^{***} (1.35, 3.11)	1.08 (0.61, 1.92)	0.91 (0.33, 2.49)	0.94 (0.25, 3.55)
Reading (Yes)	0.44 ^{***} (0.34, 0.57)	0.84 (0.61, 1.15)	1.11 (0.43, 2.87)	1.18 (0.34, 4.16)	2.24* (1.13, 4.46)	1.13 (0.48, 2.68)	3.25 (0.29, 36.81)	4.98 (0.24, 104.22)
Play cards or mahjong (Yes)	0.58 ^{***} (0.47, 0.72)	0.90 (0.71, 1.14)	0.63 (0.32, 1.26)	0.50 (0.22, 1.11)	1.32 (0.82, 2.12)	0.68 (0.38, 1.22)	0.38 (0.04, 3.53)	0.23 (0.02, 2.68)
Physical exercise (vs Almost never)								
Several times per week	0.75* (0.58, 0.96)	0.73* (0.55, 0.96)	1.67 (0.93, 2.99)	1.84 (0.94, 3.61)	1.30 (0.78, 2.14)	1.24 (0.70, 2.12)	2.34 (0.89, 6.13)	1.79 (0.55, 5.85)
Everyday	0.70 ^{***} (0.58, 0.85)	0.72 ^{**} (0.58, 0.90)	0.93 (0.54, 1.59)	1.04 (0.57, 1.89)	1.29 (0.84, 1.98)	1.01 (0.63, 1.63)	4.35 ^{***} (1.84, 10.29)	4.03 ^{**} (1.42, 11.46)
Meeting with children (vs Almost never)								
Several times per week	0.92 (0.74, 1.15)	0.94 (0.57, 1.16)	1.08 (0.60, 1.95)	1.13 (0.59, 2.14)	0.84 (0.53, 1.33)	0.71 (0.43, 1.17)	1.02 (0.33, 3.17)	1.56 (0.39, 6.22)
Everyday	1.04 (0.83, 1.31)	0.95 (0.73, 1.24)	1.06 (0.58, 1.95)	0.92 (0.45, 1.88)	0.70 (0.44, 1.13)	0.68 (0.39, 1.19)	1.38 (0.45, 4.24)	2.50 (0.56, 11.26)

Neighbor interaction (vs
Almost never)

Several times per week	0.70* (0.51, 0.97)	0.81 (0.57, 1.16)	0.35** (0.16, 0.76)	0.30** (0.13, 0.74)	0.84 (0.44, 1.61)	0.75 (0.36, 1.54)	2.26 (0.64, 7.96)	2.34 (0.51, 10.81)
Everyday	0.59*** (0.46, 0.74)	0.67** (0.51, 0.87)	0.56* (0.32, 1.00)	0.52* (0.27, 1.00)	1.07 (0.63, 1.83)	1.07 (0.59, 1.93)	3.00* (1.10, 8.19)	2.85 (0.83, 9.82)

Social participation (vs
Almost never)

Several times per month	0.69** (0.52, 0.90)	0.83 (0.62, 1.12)	1.39 (0.80, 2.41)	1.64 (0.85, 3.16)	0.93 (0.57, 1.52)	0.77 (0.44, 1.37)	1.21 (0.47, 3.14)	1.23 (0.34, 4.36)
Several times per week	0.75* (0.58, 0.96)	0.90 (0.69, 1.19)	1.76 (0.82, 3.78)	2.56* (1.06, 6.17)	2.62** (1.44, 4.80)	2.14* (1.08, 4.24)	0.81 (0.14, 4.62)	0.58 (0.07, 4.71)

^a Models for univariate analysis;

^b Models for multivariate analysis and adjustment for age and gender;

*** p<0.001;

** p<0.01;

* P<0.05.

Figures

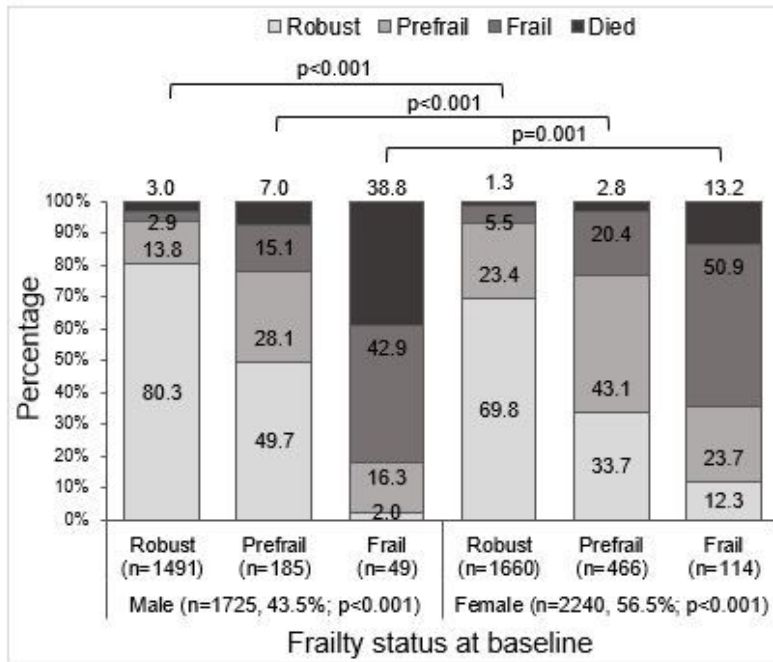


Figure 1a Outcomes after 2 years from baseline frailty status according to gender.

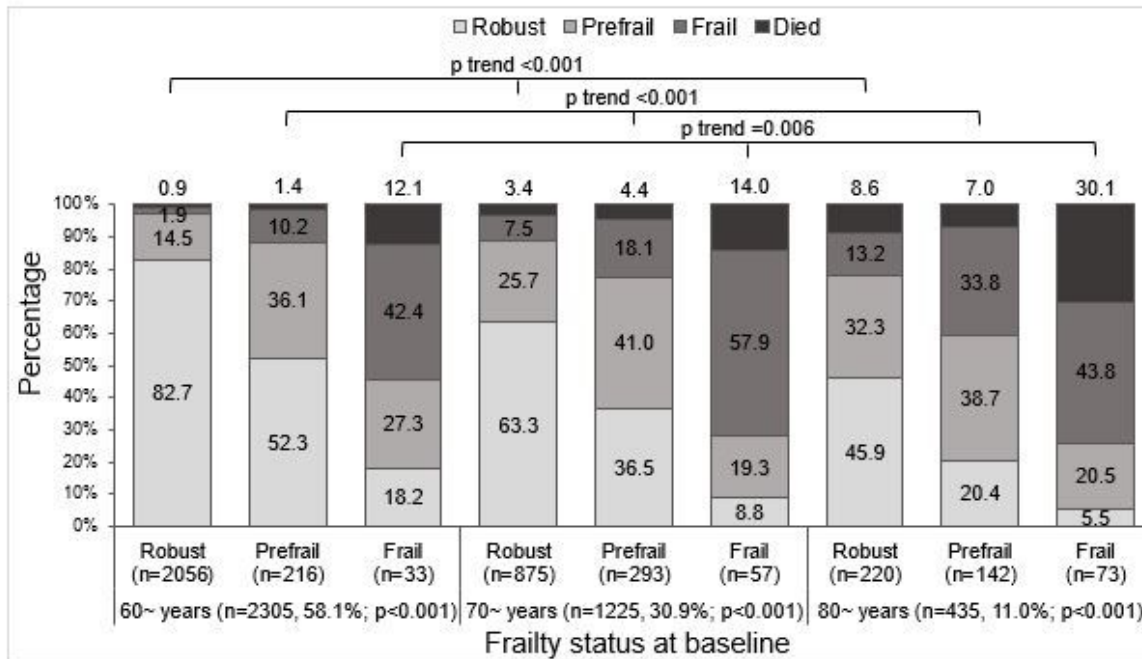


Figure 1b Outcomes after 2 years from baseline frailty status according to age.

Figure 1

Figure 1a Outcomes after 2 years from baseline frailty status according to gender. Figure 1b Outcomes after 2 years from baseline frailty status according to age.

Supplementary Files

This is a list of supplementary files associated with this preprint. Click to download.

- [AppendixBMCGeriatrics.docx](#)