

Suicide among people treated for drug use disorders: a Danish national record-linkage study

Morten Hesse (✉ mh.crf@psy.au.dk)

Aarhus Universitet <https://orcid.org/0000-0002-6849-6554>

Birgitte Thylstrup

Aarhus University

Abdu Kedir Seid

Aarhus University

Jens Christoffer Skogen

Norwegian Institute of Public Health

Research article

Keywords: drug use disorder, suicidal behaviour, mental health, treatment, longitudinal study, cohort, competing risks

Posted Date: December 5th, 2019

DOI: <https://doi.org/10.21203/rs.2.18295/v1>

License: © ⓘ This work is licensed under a Creative Commons Attribution 4.0 International License.
[Read Full License](#)

Version of Record: A version of this preprint was published on January 31st, 2020. See the published version at <https://doi.org/10.1186/s12889-020-8261-4>.

Abstract

Background Substance use disorders are a major risk factor for suicide. However, less is known about specific risk factors for suicide in people with substance use disorders.

Methods This population cohort study assessed suicide among people treated for drug use disorders in Denmark 2000-2010, and described risk factors for completed suicide. Data from 27,942 individuals enrolled in treatment were linked to national registers and matched with controls. Competing risk regression was used to identify risk factors of completed suicide.

Results There were 163 suicides among patients with a history of drug treatment (0.6% of patients). Increased risk was associated with younger age at enrolment (hazard ratio [HR] = 0.97, 95% CI: 0.95, 0.98), history of psychiatric care (HR=1.96, CI 95%: 1.39, 2.77), opioid use (HR=1.81, 95% CI: 1.23, 2.68) and alcohol use (HR=1.56, 95% CI: 1.09, 2.23). Lower risk was associated with cannabis use (HR=0.69, 95% CI: 0.50, 0.96). The standard mortality ratio was 7.13 for people with drug use disorder without a history of psychiatric care (95% CI: 5.81, 8.44), 13.48 for people with drug use disorder and psychiatric history (95% CI: 9.75, 17.22), and 13.61 for people with psychiatric history only (95% CI: 6.72, 20.50)

Conclusions Risk of suicide is increased among people with drug use disorders. Access to treatment for co-morbid mental health problems for people with drug use disorders could potentially reduce risk of suicide.

Background

Suicide is a global phenomenon; nearly 800,000 people die from suicide every year, with a higher prevalence among men compared to women, peaking between the age of 15 and 24 among women, and between the age of 25 and 45 among men (1). According to the 2016 Global Burden of Disease Study, suicide was among the top ten leading causes of death in Western European countries (2).

Several meta-analytic studies have reported an association between substance use, including alcohol and illicit drug use on the one hand, and suicidal ideation, suicide attempts, and suicide death on the other (3, 4). A recent meta-analysis found that in case-control psychological autopsy studies, the presence of a drug use disorder (DUD) was associated with a 7-fold increase in suicide (5). Further, previous studies have reported significant associations between the misuse of prescription drugs and suicidal ideation or suicide (6, 7).

Risk factors related to suicide

Significant risk factors for suicidal behavior include misuse of alcohol or drugs, a history of self-harm and attempted suicide, and psychiatric disorders (8–13). Globally, alcohol dependence (13.3%), amphetamine dependence (2.4%), opioid dependence (1.9%) and cocaine dependence (0.9%) are important attributable factors for suicide (14). In Denmark, alcohol use was attributable to 33.3% of

deaths due to suicide in 2017, while 3.1% were attributable to drug use according to global burden of disease estimates (15). Cannabis use and cannabis use disorders have been shown to be correlated with suicidal behaviour and ideation, although there is no convincing evidence that the link is causal (16). It is likely that the strong association between cannabis and suicide could be explained by other factors, such as co-morbid mental health and behavioural problems (17).

Previous research shows that mood and anxiety disorders are risk factors of suicide (18), including both unipolar and bipolar mood disorders (19), especially in the early phases of illness (20). In addition, borderline personality disorder is associated with an elevated risk of completed suicide, especially among individuals with multiple hospitalizations (21).

Despite the large body of research on suicide and substance use and psychiatric co-morbidity, relatively few studies have assessed predictors of suicide in people with psychoactive DUD. A recent study found that both self-reported psychiatric symptoms and psychiatric treatment history independently predicted completed suicide among people with DUD (22). However, beyond this single study, there is a paucity of research that has examined risk factors associated with suicide completion in individuals with DUD.

The present study had two aims: (1) to assess excess mortality due to suicide among people treated for DUD in Denmark, and (2) to describe socio-demographic and clinical risk factors associated with completed suicide.

Methods

Data

The present study used data from multiple Danish national registers, all of which are continuously updated.

The Civil Registration System was established in 1968 and includes unique individual identification number, name, gender, date of birth, place of birth and residence, citizenship, identity of parents and spouses (23).

The Registry of Drug Abusers in Treatment has been recording information on people seeking treatment for DUD in publically funded treatment centers under the Danish social services since 1996 (24).

The National Patient Register was established in 1977 and contains personal and admission data for secondary care. The personal data include the unique identification number, municipality, and region of residence. The admission data include hospital and department codes, admission type, patient contact type (inpatient, outpatient, or emergency department), referral information, contact reason, and dates of admission and discharge (25).

The Psychiatric Central Research Register has recorded episodes of psychiatric care since 1970, and contains information for all outpatient, inpatient, and emergency contacts at psychiatric hospitals,

including dates of beginning and end of treatment, diagnoses, type of referral, place of treatment, place of residence, and mode of admission (26).

The Danish Registry for Causes of Death contains information on dates and causes of death based up on the death certificate. Since 1875, the Danish National Board of Health has maintained the registers covering deaths among all Danish residents dying in Denmark, and since 1970 such records have been computerized (27).

The Central Criminal Register contains information about offenses and offenders in criminal cases for use in criminal procedures since November 1978. Information is transferred from the central crime register to Statistics Denmark (28).

All registers were linked, using the unique identification number assigned to each individual up on birth or first entry to Denmark as an immigrant.

The data for this study are stored on secure servers at Statistics Denmark, and all procedures were approved by the Danish Data Protection Agency. Since the data used for this study were collected and stored for monitoring and quality assurance, no ethics evaluation was needed under Danish law.

Inclusion criteria

Patients were included in the study if they had been enrolled in a publicly funded outpatient treatment facility for DUD in Denmark between 2000 and 2010, and were in the age range of 18 to 75 years at time of admission. Patients were excluded if their date of death was invalid. Less than five cases were omitted from the analyses, as their date of death was recorded as January 1st 1960, although they had been in treatment after January 1st 2000 (the exact number cannot be given due to data protection rules prohibiting the download of microdata). We followed the patients over the entire observation period, beginning from first registered treatment enrolment to completed suicide or December 31, 2010, whichever occurred first.

Measures

Outcome variable. The outcome in the study was defined as time from the first registered enrollment at a treatment center for DUD to completed suicide. Dates and causes of death were identified using the Danish Register of Cause of Death. We used ICD-10 codes to identify all completed suicides ascribed to intentional self-harm (X60-X84) or the sequelae of intentional self-harm (Y87.0) (29).

Predictors. The information on all substances used by the patients in the twelve months prior to enrolment in treatment were extracted from The Registry of Drug Abusers Undergoing Treatment. These variables were dummy-coded for the following types of substances: any opioids; central stimulants; cannabis; any recorded problem drinking in the database; use of benzodiazepines; methylenedioxy methamphetamine; and intravenous drug use. Further, we used a categorical predictor indicating previous drug treatment versus no previous drug treatment, or missing information on previous treatment based on the admission form. Using the code of reason for contact from the National Patient Register, we

constructed a dummy variable representing any record of admission to a hospital in Denmark due to self-harm within the past 12 months leading up to the first registered admission to drug use disorder treatment. Using the Central Criminal Register, a dummy variable was created to indicate whether a person had been charged with a crime within the past 12 months, leading up to the first registered treatment admission. The sociodemographic variables include gender, age, civil status (living without a partner or not), not being in education, employment or training, and immigrant status (born in Denmark or not).

Analyses

Descriptive statistics are reported as percentages for dichotomous variables and means with standard deviations for all other variables. Comparison between groups was done using Nelson-Aalen curves of the cumulative hazard and estimated cumulative incidence functions. Time-to-event analysis for completed suicide was conducted using Fine and Gray's competing risks analysis (30), in which the cumulative incidence function (CIF); i.e., $C_e(t)$ gives the proportion of patients at time t who have experienced event e , while accounting for the fact that patients can experience another event that prevents event e from happening, labeled the competing event or competing risk (e.g., death not caused to suicide will rule out later death caused by suicide).

In the analyses, subjects were considered to have experienced the event if they died due to suicide, to have experienced the competing event, if they died from any other cause, and to be censored if no event took place by December 31st, 2010.

All p-values were 2-tailed, and level of significance was assessed as a Type I error with rate of alpha 0.05. All statistical analyses were performed using Stata 15 (31).

In order to compare the rate of suicide among people treated for DUD with the rate in the total population, we drew matched controls from a representative sample of the national population without a history of public funded treatment for DUD or alcohol use disorders. The sample size of the control group is five randomly drawn individuals from the total population ($n = 139,710$), proportionate to each individual enrolled at a DUD treatment center within the time period of this study, using similar gender and age group at enrolment date at the treatment centers. The age groups were 18–27, 28–37, 38–47, and 48–75 years at the time of admission to treatment.

A random enrolment date was generated for the control group. The only restriction made in the matching was that the individuals in the control group did not die before the enrolment date, the year that the follow-up started, and did not have a record of treatment for a drug or alcohol use disorder in the databases. In the control group, the time-to-event outcome variable was created after generating a random enrolment date with a beta distribution.

We analyzed the standardized mortality ratios (SMRs) to estimate the suicide gap between individuals with DUD, recent psychiatric history, or both, compared with a general population sample with neither. Comparisons were made using three categories: individuals in the control group who had past year

psychiatric care history, patients treated for DUD with past year psychiatric care, and patients treated for DUD without past year psychiatric care. We used individuals in the control group without past year psychiatric care as the reference group.

Results

Descriptive statistics

A cohort of 27,942 patients enrolled in treatment for drug use disorders between 2000 and 2010 were identified in the study sample (see Fig. 1). Table 1 shows baseline demographic and clinical characteristics of individuals in the study. The most commonly registered drugs were cannabis (52.4%), opioid (39.8%), and central stimulants (31.0%). The majority of patients were men (75.8%), and the mean age was 33.5 (standard deviation [SD]= 10.5). Most of the patients were not in education, employment or training (69.0%), were living without a partner (72.3%), and had not been treated for drug use disorders previously (54.4%).

Figure 1 around here.

Table 1 around here.

Among the cases, who committed suicide 52.1% used violent methods, and 47.9% died from poisonings. Among the controls, who committed suicide 85.6% used violent methods, and 14.4% died from poisonings.

In the case sample, 31.0% of suicide completers had received psychiatric care in the past year compared to 13.5% in the control group. The prevalence of psychiatric care among those who did not commit suicide were 1.1% in the control group versus 18.6% in patients treated for DUD.

Competing-risks regression analysis

During the follow-up, 163 (0.6%) patients had committed suicide, and 2,907 (10.4%) died due to other causes. The mean time at risk for completed suicide was 5.8 years. The disparity in cumulative incidence between remained the same during follow-up. The risk difference in suicide between patients with past psychiatric care and patients without past psychiatric care was tested using the log-rank test, and showed a statistically significant difference between the two groups on completed suicide (see Fig. 2), where patients with past psychiatric care had a higher risk of suicide.

Figure 2 and 3 around here.

The results from the competing-risks regression model (Table 1) shows that the risk of completed suicide was higher among those who were in psychiatric care in the past year (HR=1.96, 95% CI: 1.39, 2.77). The two substance-related risk factors associated with higher risk of completed suicide were opioid use (HR=1.81, 95% CI: 1.23, 2.68) and alcohol (HR=1.56, 95% CI: 1.09, 2.23), whereas use of cannabis was

associated with lower risk of completed suicide (HR=0.69, 95% CI: 0.50, 0.96). Among the socio-demographic variables, older age (HR=0.97, 95% CI: 0.95, 0.98) appeared to be protective against risk of suicide. Fig. 3 shows the cumulative incidence function by psychiatric care history.

Comparison to general population sample

The matched results showed that 163 individuals died from suicide (0.6%) and 2,907 individuals died from other causes (10.4%) in the case group. In the control group, 111 individuals died from suicide (0.08%) and 1,607 (1.2%) died from other causes. The Nelson-Aalen estimator plot showed that the risk of dying by suicide differs between the case and control groups, as well as across past year psychiatric care status (see Fig. 4), where cases with past year psychiatric care had the highest risk of dying from suicide and the controls with no past psychiatric care had the lowest risk. A Kruskal-Wallis test was conducted to determine if the mean of suicide was different between the case and control groups and showed a statistically significant difference between the case and control group. The cumulative incidence test also showed that both completed suicide and other deaths were significantly different between the case and control group (SMR = 13.48, 95% CI: 9.75, 17.22) for suicide among people treated for DUD with past year psychiatric care compared with the control group without past year psychiatric care, i.e., an individual who has sought treatment for a DUD was more than nearly 14 times more likely to commit suicide than a person of similar age group and gender without a history of treatment for DUD (see Table 2). The results also show that among the general population, individuals with a history of psychiatric care in the last 365 days before their random enrolment date were more likely to commit suicide (SMR = 13.61, 95% CI: 6.72, 20.50) than those without such psychiatric care. Furthermore, patients treated for DUD without past year psychiatric care history were also more likely to commit suicide than the control group (SMR = 7.13, 95% CI: 5.81, 8.44).

Figure 4 around here.

Discussion

Summary of findings

Using multiple Danish national registers, we examined whether excess mortality due to suicide exists among people treated for DUD, and identified risk factors associated with completed suicide between 2000 and 2010. We also compared the prevalence of suicide between individuals treated for DUD and the general population.

A person who had been in treatment for a DUD had a more than 14 times higher risk of committing suicide compared with a gender or age-matched individual with no history of treatment for substance use disorders. However, the high relative elevation must be considered in light of the low base-rate of completed suicide, and it must be remembered that among the individuals that we tracked for up to ten years, less than 1% took their own lives (compare also 28).

Our findings highlight some key characteristics of patients treated for DUD who did commit suicide. We found that younger age, past year history of psychiatric care, use of opioids, and use of alcohol were all associated with increased risk of suicide. Use of cannabis was associated with a lower risk of suicide. Past psychiatric care was associated with a higher risk of suicide in our cohort. As would be expected, mental health problems were associated with an elevated suicide risk in both the DUD cohort and among the controls, a finding also reported by Cavanagh, Carson (29).

Our finding that opioid use is a strong predictor of completed suicide is consistent with other studies (9, 30, 31), even if those other studies have assessed suicidal ideation and attempts, rather than completed suicide. In our context, opioid use was part of a drug problem that had led to treatment, meaning that our findings may not be relevant for opioid use among pain patients (compare 32).

Our finding that alcohol use is a strong predictor of completed suicide is also consistent with other studies (33, 34). For instance, one in five people who committed suicide in an Australian psychological autopsy study were found to have an alcohol use disorder (35). In addition, alcohol intoxication is associated with methods of increased lethality when attempting suicide, i.e. methods that have a higher risk of a fatal outcome (36).

Our finding that cannabis was associated with lower risk of completed suicide was unexpected (37, 38). It is possible that third variable confounding underlie these negative correlations. However, the some research suggests at least one active component in cannabis, namely cannabidiol (39), can have beneficial effects on substance use disorders, by reducing drug seeking behaviour and symptoms of anxiety (39). This may in turn reduce the risk of completed suicide in the context of multiple types of DUD. It is also possible that the general loss of initiative associated with cannabis use may indirectly influence suicidal behaviour as well (40).

Our findings of no association between self-harm and completed suicide is contrary to other studies (see 3). It is possible that we did not capture self-harm with sufficient precision, or that our patient group did not present with self-harm, but rather with symptoms of intoxication or withdrawal.

Implications for practice

There is growing evidence that patients with DUD who experience mental health problems may be helped by interventions that are integrated with substance abuse treatment. At least one meta-analysis (41), as well as more recent clinical trials (42-44), indicate that both mental health problems and substance use disorders are receptive to psychotherapy as a mode of treatment. Furthermore, there is robust evidence that antidepressants can be helpful for people with co-morbid depression and substance use disorders, even if the effects are larger when patients are abstinent before being treated (45, 46) and the quality of the evidence is mixed (47). Finally, other studies show that mental health problems can be validly assessed among people undergoing treatment for DUD with use of self-report instruments (48, 49). As such, identification of co-existing psychopathology should be highlighted even more as a potential first step towards suicide prevention.

Strengths and limitations

Some limitations must be noted for this study. First, as with any register-based study, we were not able to provide direct quality control over the process of data collection. Secondly, and perhaps more importantly, suicides by poisonings may be difficult to discriminate from overdoses (50). This could especially lead to an under-estimation of the association between opioid use and suicide, as opioids are the drugs that are primarily involved in accidental poisonings (50).

In the present study, the case definition of suicide only included ICD-10 cause of death codes for intentional self-inflicted poisoning or injury (X60-X84). A systematic review from 2012 concluded that suicide deaths are generally under-reported (51). In this review, the level of under-reporting varied between different primary studies, but high quality studies tended to report less under-reporting than studies of poorer quality. As such, it is likely that our case definition leads to lower bound estimates of suicide deaths and may dilute estimated associations. A potential solution to under-reporting is redistribution of ICD-10 death codes which may contain suicide deaths (such as undetermined intent injury codes (Y10-Y34), and exposure to undetermined factors (X59) (2)). However, a recent Norwegian national registry study covering death certificates for the years 2005-2014 reported that redistribution of X59 codes which constituted 26% of all injury deaths, only changed the suicide estimates by 2 percentage points (52). In the same study, 12% of all injury deaths were assigned undetermined intent injury codes (Y10-Y34). The Norwegian and Danish registries of Causes of Death share many similarities, use the same coding system (ICD-10), and are both of high quality. It is therefore unlikely that redistribution of death codes would change our overall findings to a great extent, perhaps with exception of actual intentional overdoses being assigned as undetermined intent (Y10-Y15).

Conclusions

Risk of suicide is increased among people with drug use disorders compared with the general population, although the number of suicides among people with drug use disorder is relatively small compared with drug-related deaths. The main risk factors for suicide in patients with drug use disorders are a history of mental health problems, and opioid and alcohol use.

Abbreviations

HR, Hazard ratio

CI, Confidence interval

SMR, Standard mortality ratios

DUD, Drug use disorder

ICD-10, International classification of Diseases, Tenth Revision

Declarations

Ethics approval and consent to participate

All data used for this study were collected for quality assurance or monitoring purposes, and under Danish legislation, no ethics approval or consent to participate was necessary.

Consent for publication

Not applicable

Availability of data and materials

The datasets analyzed for the present study are the property of the Danish government, and are stored on servers owned by Statistics Denmark. The Danish Board of Health data (<https://sundhedsdatastyrelsen.dk/da>), and Statistics Denmark (<https://www.dst.dk/da/>) can provide information about how to apply for access.

Competing interests

All authors declare that they have no competing interests.

Funding

This study was funded under an umbrella funding for the Center for Alcohol and Drug Research, provided by the Danish Parliament.

Authors' contributions

Morten Hesse, Abdu Kedir, and Birgitte Thylstrup designed the study. Morten Hesse and Birgitte Thylstrup directed its implementation, including quality assurance and control. Morten Hesse, Abdu Kedir, and Birgitte Thylstrup designed the study's analytic strategy and conducted the literature review. Jens Christoffer Skogen helped conduct the analytic strategy, literature review, and the discussion. **All authors contributed significantly to writing the manuscript, and all authors have read and approved the final version.**

Acknowledgements:

We wish to acknowledge the work of Mads Uffe Pedersen, Kirsten Søndergaard Frederiksen, and Michael Mulbjerg Pedersen in developing the register-based research program of which this study is a part.

References

1. World Health Organization. Monitoring health for the SDGs, sustainable development goals. Geneva: World Health Organization; 2018.
2. Naghavi M, Collab GBDS-H. Global, regional, and national burden of suicide mortality 1990 to 2016: systematic analysis for the Global Burden of Disease Study 2016. *Bmj-Brit Med J*. 2019;364.
3. Hawton K, van Heeringen K. Suicide. *Lancet* (London, England). 2009;373(9672):1372-81.
4. Chan MK, Bhatti H, Meader N, Stockton S, Evans J, O'Connor RC, et al. Predicting suicide following self-harm: systematic review of risk factors and risk scales. *The British journal of psychiatry : the journal of mental science*. 2016;209(4):277-83.
5. Breet E, Goldstone D, Bantjes J. Substance use and suicidal ideation and behaviour in low- and middle-income countries: a systematic review. *BMC public health*. 2018;18(1):549-.
6. Poorolajal J, Haghtalab T, Farhadi M, Darvishi N. Substance use disorder and risk of suicidal ideation, suicide attempt and suicide death: a meta-analysis. *Journal of Public Health (Oxford, England)*. 2016;38(3):e282-e91.
7. Conner KR, Bridge JA, Davidson DJ, Pilcher C, Brent DA. Metaanalysis of Mood and Substance Use Disorders in Proximal Risk for Suicide Deaths. *Suicide Life Threat Behav*. 2017.
8. Borgschulte M, Corredor-Waldron A, Marshall G. A path out: Prescription drug abuse, treatment, and suicide. *Journal of Economic Behavior & Organization*. 2018;149:169-84.
9. Ashrafioun L, Bishop TM, Conner KR, Pigeon WR. Frequency of prescription opioid misuse and suicidal ideation, planning, and attempts. *Journal of Psychiatric Research*. 2017;92:1-7.
10. Ferrari AJ, Norman RE, Freedman G, Baxter AJ, Pirkis JE, Harris MG, et al. The Burden Attributable to Mental and Substance Use Disorders as Risk Factors for Suicide: Findings from the Global Burden of Disease Study 2010. *Plos One*. 2014;9(4).
11. Global Burden of Disease Study. Global Burden of Disease Study 2017 (GBD 2017) Results. Seattle, United States: Institute for Health Metrics and Evaluation (IHME); 2017.
12. Borges G, Bagge CL, Orozco R. A literature review and meta-analyses of cannabis use and suicidality. *J Affect Disord*. 2016;195:63-74.
13. Price C, Hemmingsson T, Lewis G, Zammit S, Allebeck P. Cannabis and suicide: longitudinal study. *The British journal of psychiatry : the journal of mental science*. 2009;195(6):492-7.
14. Racine M. Chronic pain and suicide risk: A comprehensive review. *Progress in Neuro-Psychopharmacology and Biological Psychiatry*. 2018;87:269-80.
15. Holma KM, Haukka J, Suominen K, Valtonen HM, Mantere O, Melartin TK, et al. Differences in incidence of suicide attempts between bipolar I and II disorders and major depressive disorder. *Bipolar Disord*. 2014;16(6):652-61.
16. Angst F, Stassen HH, Clayton PJ, Angst J. Mortality of patients with mood disorders: follow-up over 34-38 years. *J Affect Disorders*. 2002;68(2-3):167-81.
17. Temes CM, Frankenburg FR, Fitzmaurice GM, Zanarini MC. Deaths by Suicide and Other Causes Among Patients With Borderline Personality Disorder and Personality-Disordered Comparison

- Subjects Over 24 Years of Prospective Follow-Up. *J Clin Psychiat*. 2019;80(1).
18. Thylstrup B, Bloomfield K, Hesse M. Incremental predictive validity of the Addiction Severity Index psychiatric composite score in a consecutive cohort of patients in residential treatment for drug use disorders. *Addictive Behaviors*. 2018;76(1):201-7.
 19. Pedersen CB. The Danish Civil Registration System. *Scand J Public Health*. 2011;39(7 Suppl):22-5.
 20. Ministry of Children and Social Affairs. Bekendtgørelse om dataindberetninger på socialområdet [Executive Order on Data Reporting on Social Services]: retsinformation.dk; 2018 [Available from: <https://www.retsinformation.dk/pdfPrint.aspx?id=196791>].
 21. Schmidt M, Schmidt SAJ, Sandegaard JL, Ehrenstein V, Pedersen L, Sørensen HT. The Danish National Patient Registry: a review of content, data quality, and research potential. *Clinical epidemiology*. 2015;7:449-90.
 22. Mors O, Perto GP, Mortensen PB. The Danish Psychiatric Central Research Register. *Scand J Public Health*. 2011;39:54-7.
 23. Helweg-Larsen K. The Danish Register of Causes of Death. *Scand J Public Health*. 2011;39:26-9.
 24. Lund J. Mentally retarded criminal offenders in Denmark. *Br J Psychiatry*. 1990;156:726-31.
 25. WHO. ICD-10 : international statistical classification of diseases and related health problems / World Health Organization. Geneva: World Health Organization; 2004.
 26. Fine JP, Gray RJ. A Proportional Hazards Model for the Subdistribution of a Competing Risk. *J Am Stat Assoc*. 1999;94(446):496-509.
 27. StataCorp. Stata Statistical Software: Release 15. College Station, TX: StataCorp LLC. 2017.
 28. Gjertsen F, Bruzzone S, Griffiths CE. Burden of suicide presented as one of the leading causes of death: uncover facts or misrepresent statistics? *Journal of Global Health*. 2019;9(1):010401.
 29. Cavanagh JT, Carson AJ, Sharpe M, Lawrie SM. Psychological autopsy studies of suicide: a systematic review. *Psychological medicine*. 2003;33(3):395-405.
 30. Ilgen MA, Bohnert AS, Ganoczy D, Bair MJ, McCarthy JF, Blow FC. Opioid dose and risk of suicide. *Pain*. 2016;157(5):1079-84.
 31. Austin AE, Proescholdbell SK, Creppage KE, Asbun A. Characteristics of self-inflicted drug overdose deaths in North Carolina. *Drug and Alcohol Dependence*. 2017;181:44-9.
 32. Samples H, Stuart EA, Olfson M. Opioid Use and Misuse and Suicidal Behaviors in a Nationally Representative Sample of US Adults. *Am J Epidemiol*. 2019;188(7):1245-53.
 33. Schneider B. Substance use disorders and risk for completed suicide. *Arch Suicide Res*. 2009;13(4):303-16.
 34. Pfeifer P, Bartsch C, Hemmer A, Reisch T. Acute and chronic alcohol use correlated with methods of suicide in a Swiss national sample. *Drug Alcohol Depen*. 2017;178:75-9.
 35. Kolves K, Draper BM, Snowdon J, De Leo D. Alcohol-use disorders and suicide: Results from a psychological autopsy study in Australia. *Alcohol*. 2017;64:29-35.

36. Park CHK, Yoo SH, Lee J, Cho SJ, Shin MS, Kim EY, et al. Impact of acute alcohol consumption on lethality of suicide methods. *Compr Psychiat*. 2017;75:27-34.
37. van Ours JC, Williams J, Fergusson D, Horwood LJ. Cannabis use and suicidal ideation. *Journal of Health Economics*. 2013;32(3):524-37.
38. Borges G, Benjet C, Orozco R, Medina-Mora M-E, Menendez D. Alcohol, cannabis and other drugs and subsequent suicide ideation and attempt among young Mexicans. *Journal of Psychiatric Research*. 2017;91:74-82.
39. Hurd YL, Yoon M, Manini AF, Hernandez S, Olmedo R, Ostman M, et al. Early Phase in the Development of Cannabidiol as a Treatment for Addiction: Opioid Relapse Takes Initial Center Stage. *Neurotherapeutics*. 2015;12(4):807-15.
40. Lac A, Luk JW. Testing the Amotivational Syndrome: Marijuana Use Longitudinally Predicts Lower Self-Efficacy Even After Controlling for Demographics, Personality, and Alcohol and Cigarette Use. *Prev Sci*. 2018;19(2):117-26.
41. Hesse M. Integrated psychological treatment for substance use and co-morbid anxiety or depression vs. treatment for substance use alone. A systematic review of the published literature. *Bmc Psychiatry*. 2009;9.
42. Delgadillo J, Gore S, Ali S, Ekers D, Gilbody S, Gilchrist G, et al. Feasibility Randomized Controlled Trial of Cognitive and Behavioral Interventions for Depression Symptoms in Patients Accessing Drug and Alcohol Treatment. *J Subst Abuse Treat*. 2015;55:6-14.
43. Watkins KE, Hunter SB, Hepner KA, Paddock SM, de la Cruz E, Zhou AJ, et al. An Effectiveness Trial of Group Cognitive Behavioral Therapy for Patients With Persistent Depressive Symptoms in Substance Abuse Treatment. *Arch Gen Psychiat*. 2011;68(6):577-84.
44. Baker AL, Kavanagh DJ, Kay-Lambkin FJ, Hunt SA, Lewin TJ, Carr VJ, et al. Randomized controlled trial of MICBT for co-existing alcohol misuse and depression: Outcomes to 36-months. *J Subst Abuse Treat*. 2014;46(3):281-90.
45. Nunes EV, Levin FR. Treatment of depression in patients with alcohol or other drug dependence - A meta-analysis. *Jama-J Am Med Assoc*. 2004;291(15):1887-96.
46. Hesse M. Achieving abstinence by treating depression in the presence of substance-use disorders. *Addict Behav*. 2004;29(6):1137-41.
47. Agabio R, Trogu E, Pani PP. Antidepressants for the treatment of people with co-occurring depression and alcohol dependence. *Cochrane Database Syst Rev*. 2018;4:CD008581.
48. Delgadillo J, Bohnke JR, Hughes E, Gilbody S. Disentangling psychopathology, substance use and dependence: a factor analysis. *BMC Psychiatry*. 2016;16:281.
49. Hesse M, Guldager S, Linneberg IH. Convergent validity of MCMI-III clinical syndrome scales. *Brit J Clin Psychol*. 2012;51:172-84.
50. Rockett IRH, Caine ED, Connery HS, D'Onofrio G, Gunnell DJ, Miller TR, et al. Discerning suicide in drug intoxication deaths: Paucity and primacy of suicide notes and psychiatric history. *Plos One*. 2018;13(1).

51. Tollefsen IM, Hem E, Ekeberg O. The reliability of suicide statistics: a systematic review. *Bmc Psychiatry*. 2012;12:9.
52. Ellingsen CL, Ebbing M, Alfsen GC, Vollset SE. Injury death certificates without specification of the circumstances leading to the fatal injury - the Norwegian Cause of Death Registry 2005-2014. *Popul Health Metr*. 2018;16.

Tables

Table 1. Sample Characteristics and Results of Risk Factors Associated With Completed Suicide Among People Treated for Drug Use Disorders Between 2000 and 2010 (n=27,942).

	Percentage (mean/standard deviation)	Sub hazard ratio (95% confidence interval)
Year before drug use disorder treatment variables¹		
Criminal charges within the past year	41.7	0.86 (0.62, 1.20)
Self-harm within the past year	2.3	1.48 (0.70, 3.10)
Psychiatric care within the past year	19.0	1.96 (1.39, 2.77)
Clinical variables²		
Use of opioids	39.8	1.81 (1.23, 2.68)
Use of central stimulants	31.0	0.85 (0.58, 1.25)
Use of cannabis	52.4	0.69 (0.50, 0.96)
Use of Methylenedioxy methamphetamine	7.2	0.71 (0.34, 1.46)
Alcohol use (problem drinking)	25.7	1.56 (1.09, 2.23)
Use of benzodiazepines	16.0	1.18 (0.79, 1.76)
Intravenous drug use	54.8	1.23 (0.86, 1.78)
Treatment status²		
Previously treated	34.5	Reference
Never treated	54.4	1.14 (0.78, 1.67)
Missing information	11.1	1.44 (0.84, 2.45)
Socio-demographics¹		
Female gender	24.2	0.71 (0.47, 1.05)
Age (mean/standard deviation)	33.5/10.5	0.97 (0.95, 0.98)
Not in education, employment or training	69.0	1.13 (0.76, 1.70)
Living without partner	72.3	1.10 (0.75, 1.63)
Immigrant*	8.2	0.78 (0.41, 1.47)

Note: * not born in Denmark

¹ Based on record linkage

² Based on the Registry of Drug Abusers in Treatment

Table 2. Standardized Mortality ratios (SMR) of Cases and Controls With and Without Past Year Psychiatric Care.

	Control without past psychiatric care (n=138,136)	Control with past psychiatric care (n=1,574)	Case with past psychiatric care (n=5,298)	Case without past psychiatric care (n=22,644)
	SMR(95%CI)	SMR(95%CI)	SMR(95%CI)	SMR(95%CI)
Men	(ref)	12.40 (5.08-19.74)	12.70 (8.60-16.79)	6.63 (5.28-7.98)
Women	(ref)	42.92 (0.86-84.98)	39.27 (17.92-60.63)	19.55 (10.98-28.11)
All	(ref)	13.61 (6.72-20.50)	13.48 (9.75-17.22)	7.13 (5.81-8.44)

Note: *very small number and not reported to avoid identifying individuals

Cases: Patients Treated for Drug Use Disorder.

Figures

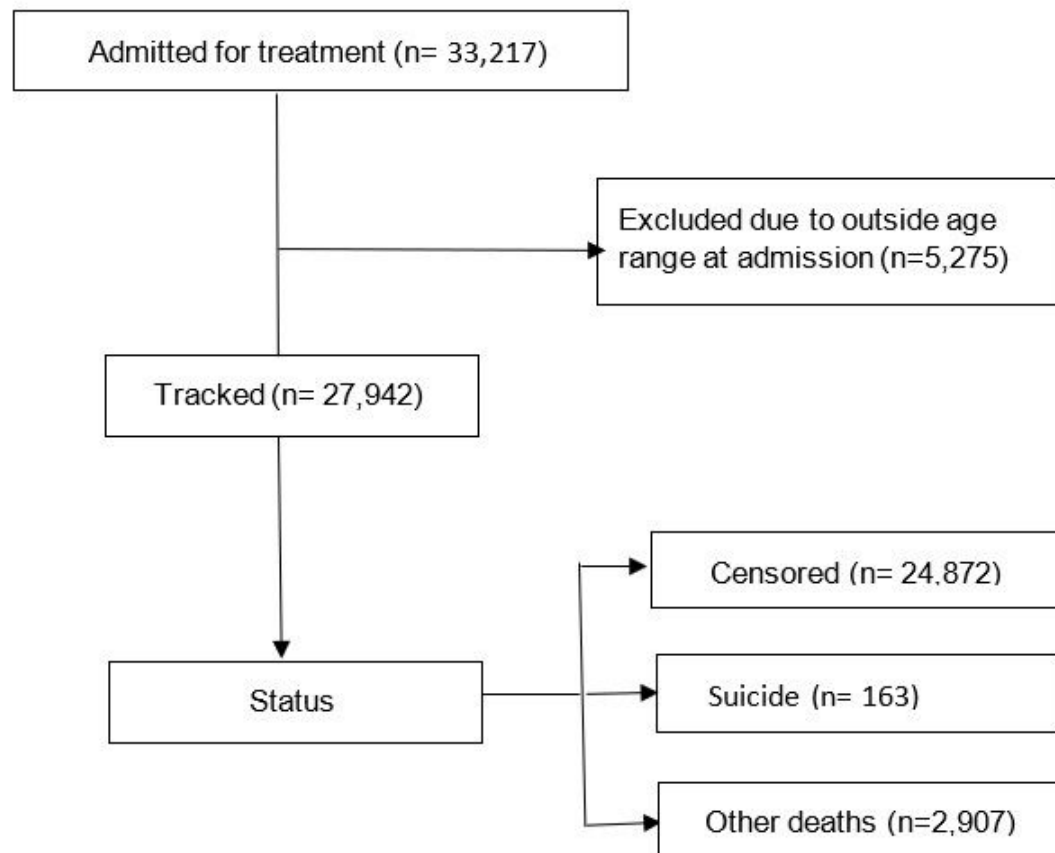


Figure 1

Flow of participants through the study.

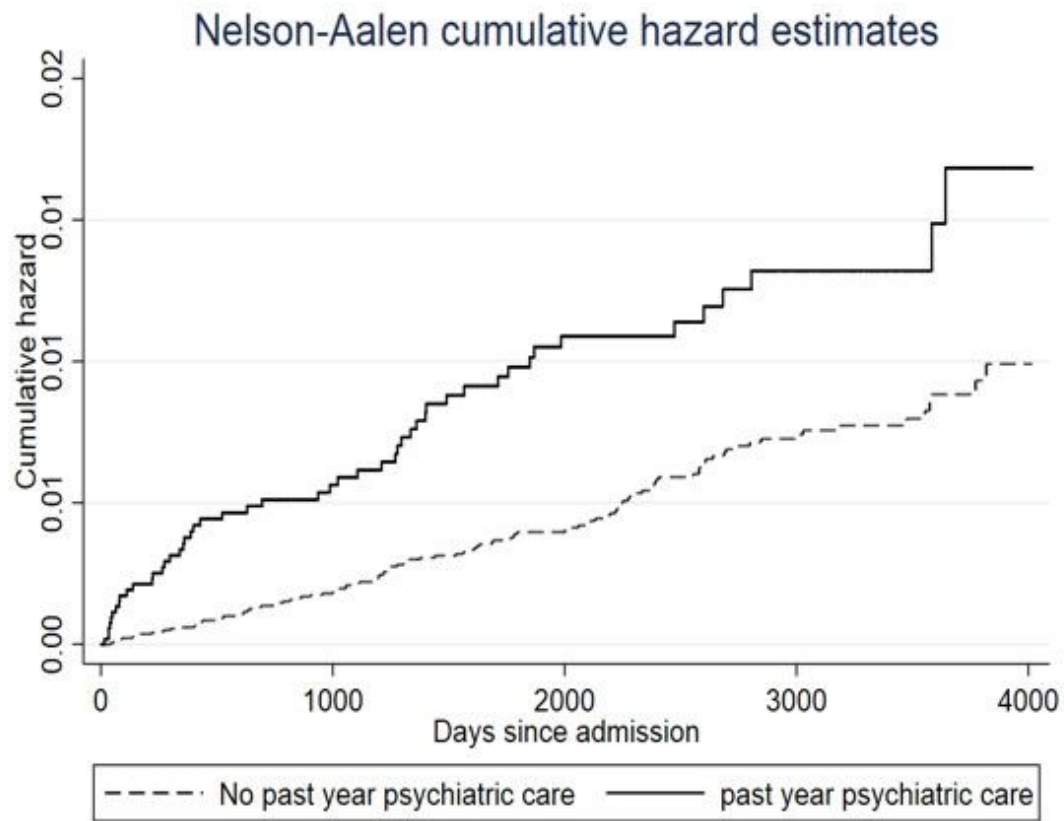


Figure 2

Nelson-Aalen curves for completed suicide with and without past psychiatric care.

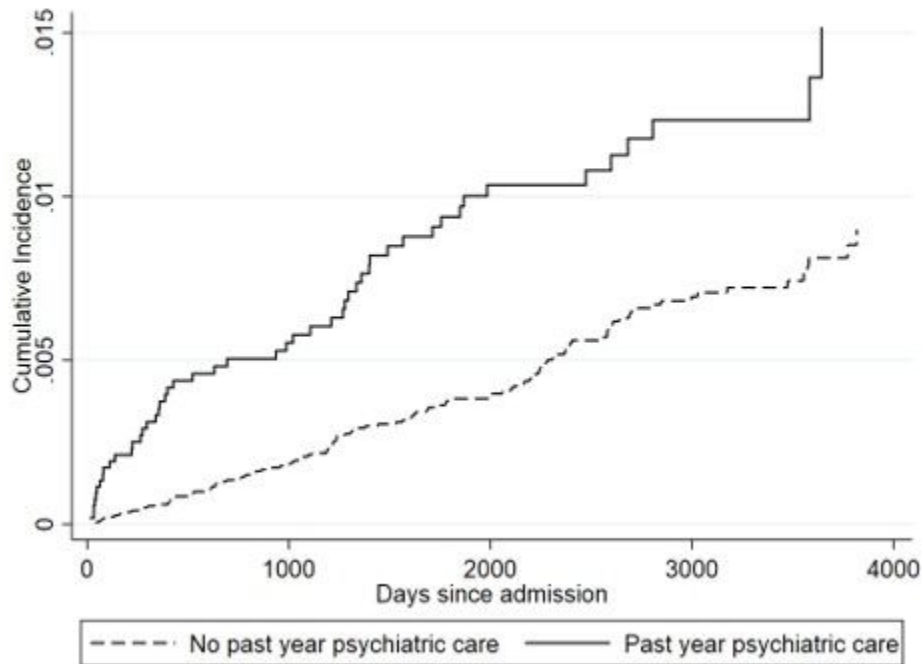


Figure 3

Comparative cumulative incidence of completed suicide with and without past year psychiatric care.

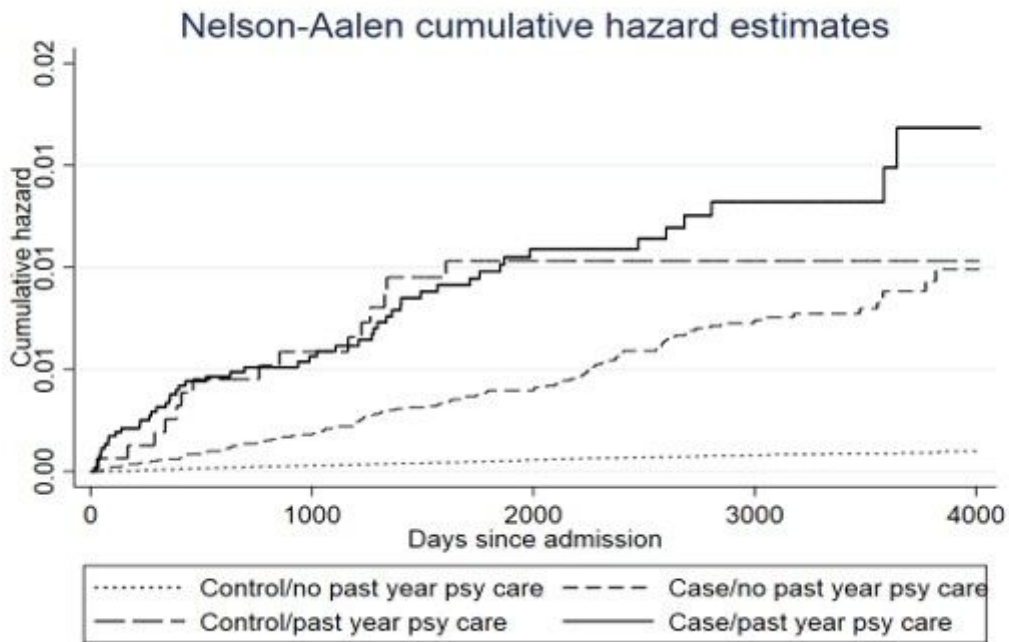


Figure 4

Nelson-Aalen curves for completed suicide between control and case groups with or without past year psychiatric care.