

Impact of Estrogen Receptor Expression on Prognosis of Ovarian Cancer According to Antibody Clone Used for Immunohistochemistry: A Meta-analysis

Chun Wai Ng

University of Texas MD Anderson Cancer Center <https://orcid.org/0000-0003-1291-4937>

Kwong-kwok Wong (✉ kkwong@mdanderson.org)

University of Texas MD Anderson Cancer Center <https://orcid.org/0000-0002-0375-6669>

Research

Keywords: Antibody, Biomarker, Estrogen receptor, Meta-analysis, Ovarian cancer, Prognosis, Subtype

Posted Date: September 21st, 2021

DOI: <https://doi.org/10.21203/rs.3.rs-889368/v1>

License: © ⓘ This work is licensed under a Creative Commons Attribution 4.0 International License.

[Read Full License](#)

Abstract

Background

The prognostic value of the expression of estrogen receptor (ER) subtypes ER α and ER β in ovarian cancer has previously been evaluated by meta-analyses. However, the results are contradictory and controversial.

Methods

We conducted an updated meta-analysis with stringent inclusion criteria to ensure homogeneous studies to determine the effect of ER subtypes on ovarian cancer prognosis. Articles were retrieved by systematic search of PubMed and Web of Science for articles dated up to June 2021. Only studies with known hazard ratio (HR) and antibody clone for immunochemistry (IHC) were included. Pooled HRs with the corresponding 95% confidence intervals (CIs) were calculated for the effect of ER α and ER β expression on ovarian cancer patient progression-free survival (PFS) and overall survival (OS).

Results

A total of 17 studies were included, of which 11 and 13 studies examined the relationships between ER α expression and PFS and OS, respectively, and 5 and 7 studies examined the relationships between ER β expression and PFS and OS, respectively. Neither ER α expression (random-effects model; HR=0.99, 95% CI=0.83-1.18) nor ER β expression (fixed-effects model; HR=0.94, 95% CI=0.69-1.27) was associated with PFS. Random-effects models showed that ER α expression (HR=0.81, 95% CI=0.64-1.02) and ER β expression (HR=0.75, 95% CI=0.50-1.13) were only marginally and not significantly associated with better OS. Subgroup analysis revealed that ER α expression determined using antibody clone 1D5 (HR=0.75, 95% CI=0.64-0.88) and ER β expression determined using ER β 1-specific-antibody clone PPG5/10 or EMR02 (HR=0.65, 95% CI=0.50-0.86) were associated with significantly better OS, but ER expression determined using other antibodies was not.

Conclusions

Both ER α expression and ER β expression determined using certain antibody clones are significantly associated with OS of ovarian cancer patients, which suggests that both ER subtypes are prognostic biomarkers for ovarian cancer. The findings of this study provide new insight into the impact of ER expression on ovarian cancer prognosis.

Background

Ovarian cancer is one of the top five causes of death from gynecological cancer in developed countries [1]. Because of the lack of effective early diagnostic methods and aggressive behavior, ovarian cancer is usually detected at late stages and has a low survival rate (10-30% 5-year survival rate) [2]. In 2020, about 21,750 cases were diagnosed and 13,940 individuals died from ovarian cancer in the US [3]. Approximately 90% of ovarian cancer cases are classified as epithelial ovarian cancer. Given this

situation, discovering biomarkers for prognosis, response to therapeutic intervention, and development of novel treatment strategies is desperately needed.

Estrogen receptor (ER) and its ligand estrogen have long been recognized to play important roles in ovarian cancer [4]. ER signaling has been shown to be oncogenic by promoting cancer cell survival and proliferation [5]. Two subtypes of ER have been identified, ER α and ER β [6-8]. ER α , also named ESR1, was first identified in the 1950s by Jensen and Jordan [9]. Approximately 50% of ovarian tumor tissues express ER α [10]. ER β , also named ESR2, was identified by Kuiper et al in 1996 [8]. *In vitro* experiments showed that ER expression is responsible for ovarian cancer cell growth. Anti-estrogens, which can inhibit the interactions between ER and estrogen, were shown to inhibit ovarian cancer cell growth [11]. Examination of clinical specimens and *in vitro* experiments showed that high expression of ER α was associated with a better response to anti-estrogen treatment [12]. ER β is also a key factor in ovarian cancer pathogenesis and associated with responsiveness to hormonal treatment in ovarian cancer [13].

Given the important role of ER signaling in ovarian cancer, studies have interrogated the relationship between ER expression and ovarian cancer prognosis [14]. ER expression was expected to be related to better prognosis, as is the case in breast cancer [15,16]. However, contradictory results were reported. While Bizzi et al. (1988) [17] and Yang et al. (2009) [18] found that ER expression was linked with better prognosis of patients with epithelial ovarian cancer, Liew et al. (2015) [19] found that ER expression did not affect the prognosis of patients with epithelial ovarian cancer. Khandakar et al. (2014) [20] reported an inverse association between ER expression and epithelial ovarian cancer patients' survival.

The proportion of ER-positive ovarian cancer cases that respond to anti-estrogens such as tamoxifen is low (<10%) compared to the proportion of breast cancer cases that respond (~80%) [14,21]. This leads to questions about the function of ER signaling in ovarian cancer. Mechanisms that may explain the lower responsiveness of ER-positive ovarian cancer than breast cancer to anti-estrogens include differences in 1) the expression of the subtypes of ER, 2) the expression of ER coactivators, and 3) expression patterns of ER isoforms. Recent studies have found that whereas ER α acts as a tumor promoter in ovarian cancer, ER β acts as a tumor suppressor in ovarian cancer [22-24].

Given the unexplained heterogeneity of the results from previously published meta-analyses [25,26], the specific antibody used to measure ER expression should be taken into consideration in examinations of the impact of ER expression on ovarian cancer patients' survival. Although the predictive and prognostic values of different ER antibodies have been extensively tested in breast cancer, they have not yet been determined in ovarian cancer [27-30]. Therefore, to gain insight into the prognostic value of ER expression in ovarian cancer and guide future research, we conducted an updated meta-analysis that included only studies with ER subtypes determined by immunohistochemistry (IHC) with known specific antibody.

Methods

Literature search strategy and inclusion criteria

We searched the literature databases PubMed and Web of Science. The articles from 1982 to June 2021 were searched. The terms (“estrogen” or “hormon*” or “steroid”) and “receptor*” and “ovarian” were queried for the title, and the terms (“clinical” or “survival” or “outcome”) were queried for all fields. Studies were included only if the article provided information about the hazard ratios (HRs) for progression-free survival (PFS) and/or overall survival (OS) based on ER α and/or ER β expression determined by IHC. Studies with fewer than 10 samples were excluded.

Data collection and statistical analysis

Additional data extracted from the included studies included analysis outcomes, antibody used, and mean/median age. The heterogeneity of the studies was analyzed by Cochran’s Q and I² tests [31]. A fixed-effects model was used if the heterogeneity was low, and a random-effects model was used if the heterogeneity was high. The pooled HRs between ER-negative and ER-positive for different subgroups were calculated and presented using forest plots. Meta-analyses were performed by using RevMan [32].

Results

Literature search results

From the initial search in PubMed and Web of Science, 702 articles were retrieved. After examination of the title and abstract, 660 articles that were duplicate or obviously irrelevant to the topics of survival and ER expression were excluded. From the remaining 42 articles, the full text was evaluated, and articles were included if ER expression was determined by IHC, ER α and/or ER β /ER β 1 was examined, the antibody clone was specified, and a HR was provided for OS and/or PFS. Finally, 17 articles were included for meta-analysis. The article selection process is described in Figure 1.

Characteristics of the included studies

The 17 articles included for this meta-analysis are summarized in Table 1. A total of 6172 patients were included. The majority of the studies included patients with a mixture of epithelial ovarian cancer subtypes. Approximate proportions of patients with the different subtypes were as follows: serous, 4082 (66%); endometrioid, 913 (15%); clear cell, 486 (8%); mucinous, 466 (8%); mixed epithelial, 60 (1%); undifferentiated, 45 (1%); and other (carcinosarcoma, adenocarcinoma, transitional, and unknown epithelial), 120 (2%). The antibody clones employed for detection of ER α were 1D5, 6F11, and SP1, and the antibody clones employed for detection of ER β were PPG5/10, EMR02 and 14C8.

Table 1. Studies included in the meta-analysis.

Study	Region	No. of Patients	Mean/Median Age, y	ER α Antibody Clone (Dilution)	ER β Antibody Clone (Dilution)	Outcome Analyzed (ER Subtype)
Aust et al. (2012) [33]	Austria	101	56 (Median)	1D5 (1:50)	ND	PFS (ER α) and OS (ER α)
Aust et al. (2013) [34]	Austria	63	58.3 (Median)	1D5 (1:50)	PPG5/10 (1:20)	PFS (ER β) and OS (ER β)
Battista et al. (2014) [35]	Germany	107	61.7 (Mean)	1D5 (NR)	ND	PFS (ER α)
Burges et al. (2009) [36]	Germany	100	60.35 (Mean)	1D5 (1:150)	PPG5/10 (1:50)	PFS (ER α) and OS (ER α and ER β)
Chan et al. (2008) [37]	Hong Kong	173	50 (Mean)	1D5 (1:100)	EMR02 (1:30)	OS (ER β)
De Sousa Damião et al. (2007) [38]	Brazil	85	55.8 (Mean)	6F11 (1:50)	ND	OS (ER α)
De Stefano et al. (2011) [39]	Italy	58	54 (Median)	6F11 (1:100)	14C8 (1:30)	PFS (ER α and ER β) and OS (ER α and ER β)
de Toledo et al. (2014) [40]	Brazil	152	55.2 (Mean)	1D5 (1:1000)	14C8 (1:600)	PFS (ER α and ER β) and OS (ER α and ER β)
Feng et al. (2016) [41]	China	875	56 (Median)	SP1 (NR)	ND	PFS (ER α) and OS (ER α)
Jönsson et al. (2015) [42]	Sweden	35	58 (Median)	1D5 (1:100)	PPG5/10 (1:10)	PFS (ER α and ER β) and OS (ER α and ER β)

Kjaer et al. (2007) [43]	Denmark	720	NR	1D5 (1:200)	ND	OS (ER α)
Lee et al. (2005) [44]	USA	258	58.3 (Mean)	6F11 (1:50)	ND	OS (ER α)
Liew et al. (2015) [19]	China	108	53 (Median)	6F11 (NR)	ND	PFS (ER α) and OS (ER α)
Llaurado Fernandez et al. (2020) [45]	British	100	48.5 (Mean)	SP1 (NR)	ND	PFS (ER α) and OS (ER α)
Rambau et al. (2017) [46]	Calgary	182	54 (Mean)	SP1 (1:50)	ND	OS (ER α)
Sieh et al. (2013) [47]	USA	2933	60.9 (Mean)	SP1 (1:25)	ND	PFS (ER α)
van Kruchten et al. (2015) [48]	Netherlands	121	61 (Median)	SP1 (NR)	14C8 (NR)	PFS (ER α and ER β) and OS (ER α and ER β)

NR, not reported; ND, IHC for ER β not done.

Associations between ER α and PFS and OS

The analyses of the relationships between ER α expression and PFS and OS of patients with ovarian cancer included 11 studies and 13 studies, respectively. Heterogeneity was moderate for the studies included in the PFS analysis ($I^2=57\%$, $p=0.01$) and the studies included in the OS analysis ($I^2=72\%$, $p<0.0001$). Therefore, a random-effects model was employed to calculate the pooled HRs for both PFS and OS. ER α expression was not associated with PFS (HR=0.99, 95% CI=0.83-1.18) (Figure 2) but was significantly associated with better OS (HR=0.81, 95% CI=0.64-1.02) (Figure 3).

Subgroup analysis was then done for the effect of ER α expression on OS by ER α antibody clone. Studies using clone 1D5 showed that ER α expression was significantly associated with better OS (HR=0.75, CI=0.64-0.88), while studies using clones SP1 (HR=0.56, CI=0.24-1.31) and 6F11 (HR=1.09, CI=0.91-1.30) did not (Figure 4).

Associations between ER β and PFS and OS

The analyses of the relationships between ER β expression and PFS and OS of patients with ovarian cancer included 5 studies and 6 studies, respectively. Heterogeneity was low for the studies included in the PFS analysis ($I^2=0\%$, $p=0.40$) and moderate for the studies included in the OS analysis ($I^2=60\%$,

p=0.02). Therefore, a fixed-effects model was employed to calculate the pooled HR for PFS, and a random-effects model was employed to calculate the pooled HR for OS. ER β expression was not associated with PFS (HR=0.94, CI=0.69-1.27) (Figure 5) or OS (HR=0.75, CI=0.50-1.13) (Figure 6).

Subgroup analysis was then done for the effect of ER β expression on OS by ER β antibody clone. Studies using clone PPG5/10 or EMR02 (both known for targeting ER β 1) (HR=0.65, CI=0.50-0.86) showed that ER β expression was significantly associated with better OS, while studies using clone 14C8 (HR=1.27, CI=0.79-2.04) did not (Figure 7).

Discussion

This meta-analysis showed that ER α expression and ER β expression determined using certain antibody clones were each associated with OS in patients with ovarian cancer.

Systematic reviews and meta-analyses have previously been done to determine the effects of ER expression on clinical outcomes of patients with ovarian cancer [25,26]; however, none of these studies addressed the use of different detection methods and different antibodies in different studies. To address the weaknesses of the previous studies, we limited our analysis to studies for which HR was reported, ER expression was determined by IHC, and the specific antibody clones used were specified. Although this approach could reduce the power of the analysis, it could also improve the accuracy, analyzability, and interpretability of the results by only including articles with information that has important clinical implications.

HR is the most commonly used parameter for comparing the odds of survival over a period of time between two groups, we opted to use HR for our meta-analysis. As stated in reports of the previous meta-analyses, the indirect extraction of HR might reduce the accuracy of the meta-analysis [25,26]. Thus, we opted to include only studies with a reported HR for accuracy.

IHC is the standard method for assessing the expression of ER in the clinical setting [49] ER expression can also be determined using other methods, such as RT-PCR and dextran-coated charcoal method [50,51]. However, the different methods differ in terms of sensitivity and specificity, and thus including studies with different ER detection methods could confound and add variability to the analysis. The results based on an analysis limited to studies using IHC can also add relevancy and applicability to clinical prognosis prediction directly, as IHC is used commonly in clinical setting.

IHC is the most common method for determining the expression of ER, and antibody selection is a critical determinant of the performance of IHC. Different clones of ER antibodies have been evaluated in detecting ER expression of breast cancer [52,53]. However, similar evaluations have not been done in ovarian cancer. In our meta-analysis, we included only studies with known antibody clones for consistency. Different antibody clones have different sensitivity and specificity, which means that including studies with an unknown antibody clone would have left us unable to draw conclusions about

how specific antibody clones might have influenced the results. In addition, further subgroup analysis of different clones of antibody could be done for studies with known antibodies.

The marginality of the association between the expression of ER α and ER β and better OS that we observed in this study might be due to the unexplained heterogeneity of the methods of the studies. The three ER α antibodies used in the studies included in our meta-analysis, 1D5, SP1, and 6F11, were previously tested and shown to have good and similar prognostic value in breast cancer [54]. However, in our analysis, only clone 1D5 was associated with better OS in ovarian cancer. Furthermore, of the three ER β antibodies used in the studies included in our meta-analysis, 14C8 and PPG5/10 (or EMR02), only PPG5/10 (or EMR02) was associated with better OS. These antibody-clone-based differences might be due to the preferential binding of ER isoforms by different clones. The ER α antibodies 1D5 and 6F11 were induced by a full-length ER α protein (66 kDa ER α), while SP1 was induced by the C-terminus of ER α that exists in the 46 kDa ER α variant. Both clones 1D5 and 6F11 bind to the A/B domain of ER α (only exists in 66 kDa ER α), the completely different results from the two clones might be due to detection sensitivity as (i.e., low sensitivity could only stain samples with high expression) [55-57]. The ER β antibody PPG5/10 and EMR02 were induced by synthetic peptide derived from the C-terminus of the human ER β , which only exists in ER β isoform ER β 1 [58]. The ER β antibody 14C8 was induced by the first 153 amino acids of ER β 1, which exists in all ER β isoforms. ER β has five alternatively spliced isoforms, ER β 1-5, and it may be that only expression of ER β 1 correlates with better OS in ovarian cancer [59]. Alternatively, some clones might have non-specific binding. This also suggests that the detection of isoforms other than wild-type ER could also confound the results.

To our knowledge, this is the first study to show that the choice of antibody for ER staining could lead to a completely different result. Inconsistent methods and the lack of granularity in assessing the intensity of ER have offered as potential explanations for the inconsistent results of different studies, such as biomarker studies of the hormonal therapy based on ER expression in ovarian cancer [60,61]. Our study reported here shows that the choice of antibodies also contributes to different results.

With the analysis approach in this study, our results are not consistent with the results of the previously published meta-analyses of the impact of ER status on ovarian cancer prognosis [25,26]. Although our meta-analysis included fewer studies than the previous meta-analyses did, the studies that we included were more homogeneous.

A limitation of our study is that we estimated pooled HRs from studies that included different proportions of patients with different subtypes of ovarian cancer. Since different subtypes of ovarian cancer also have different expression levels of ERs and estrogen signaling mechanisms, the pooled HRs of ER expression cannot be assumed to agree with the HR for any particular subtype of ovarian cancer. Further studies focusing on certain subtype of ovarian cancer should be done.

Conclusions

In conclusion, ER α expression and ER β expression are significantly associated with better OS of ovarian cancer patients, which indicates that both subtypes of ER are also prognostic biomarkers for ovarian cancer. In addition, the choice of ER antibody could be a critical determinant of the study outcome.

Abbreviations

CI: Confidence interval

ER: Estrogen receptor

HR: Hazard ratio

IHC: Immunohistochemistry

OS: Overall survival

PFS: Progression-free survival

Declarations

Availability of data and materials

The datasets used and/or analyzed in this study are available from the corresponding author on reasonable request.

Ethics approval and consent to participate

Not applicable

Consent for publication

Not applicable

Competing interests

The authors declare that they have no competing interests.

Acknowledgement

We would like to thank Stephanie Deming, Research Medical Library, MD Anderson Cancer Center, for editing the article. We would also like to acknowledge the teaching by Professor Lex Freidon and peer reviewing of this manuscript by CWNs' classmates of the School of Biomedical Informatics, The University of Texas Health Science Center at Houston.

Funding

This work was supported by the Ovarian Cancer Moon Shot Program at The University of Texas MD Anderson Cancer Center, Texas, USA, Cure Our Ovarian Cancer and STAAR Ovarian Cancer Foundation.

Authors' contributions

CWN and KKW constructed the idea of the study. CWN did the literature searching. CWN and KKW screened and selected the studies. CWN extracted and analyzed the data. CWN wrote the first draft of the paper. CWN and KKW critically revised the final version.

References

1. Bray F, Ferlay J, Soerjomataram I, Siegel RL, Torre LA, Jemal A. Global cancer statistics 2018: GLOBOCAN estimates of incidence and mortality worldwide for 36 cancers in 185 countries. *CA Cancer J Clin.* 2018; 68(6):394-424.
2. Langdon SP, Herrington CS, Hollis RL, Gourley C. Estrogen Signaling and Its Potential as a Target for Therapy in Ovarian Cancer. *Cancers (Basel).* 2020; 12(6).
3. Siegel RL, Miller KD, Jemal A. Cancer statistics, 2020. *CA Cancer J Clin.* 2020; 70(1):7-30.
4. Ciucci A, Zannoni GF, Buttarelli M, Lisi L, Travaglia D, Martinelli E, Scambia G, Gallo D. Multiple direct and indirect mechanisms drive estrogen-induced tumor growth in high grade serous ovarian cancers. *Oncotarget.* 2016; 7(7):8155-8171.
5. Verma A, Cohen DJ, Jacobs TW, Boyan BD, Schwartz Z. The Relative Expression of ERalpha Isoforms ERalpha66 and ERalpha36 Controls the Cellular Response to 24R,25-Dihydroxyvitamin D3 in Breast Cancer. *Mol Cancer Res.* 2021; 19(1):99-111.
6. Chuffa LG, Lupi-Junior LA, Costa AB, Amorim JP, Seiva FR. The role of sex hormones and steroid receptors on female reproductive cancers. *Steroids.* 2017; 118:93-108.
7. Jensen EV, Jacobson HI, Walf AA, Frye CA. Estrogen action: a historic perspective on the implications of considering alternative approaches. *Physiol Behav.* 2010; 99(2):151-162.
8. Kuiper GG, Enmark E, Peltö-Huikko M, Nilsson S, Gustafsson JA. Cloning of a novel receptor expressed in rat prostate and ovary. *Proc Natl Acad Sci U S A.* 1996; 93(12):5925-5930.
9. Jensen EV, Jordan VC. The estrogen receptor: a model for molecular medicine. *Clin Cancer Res.* 2003; 9(6):1980-1989.
10. Wong KK, Lu KH, Malpica A, Bodurka DC, Shvartsman HS, Schmandt RE, Thornton AD, Deavers MT, Silva EG, Gershenson DM. Significantly greater expression of ER, PR, and ECAD in advanced-stage low-grade ovarian serous carcinoma as revealed by immunohistochemical analysis. *Int J Gynecol Pathol.* 2007; 26(4):404-409.

11. Draganescu M, Carmocan C. Hormone Therapy in Breast Cancer. *Chirurgia (Bucur)*. 2017; 112(4):413-417.
12. Andersen CL, Sikora MJ, Boisen MM, Ma T, Christie A, Tseng G, Park Y, Luthra S, Chandran U, Haluska P *et al*. Active Estrogen Receptor-alpha Signaling in Ovarian Cancer Models and Clinical Specimens. *Clin Cancer Res*. 2017; 23(14):3802-3812.
13. Kyriakidis I, Papaioannidou P. Estrogen receptor beta and ovarian cancer: a key to pathogenesis and response to therapy. *Arch Gynecol Obstet*. 2016; 293(6):1161-1168.
14. Ribeiro JR, Freiman RN. Estrogen signaling crosstalk: Implications for endocrine resistance in ovarian cancer. *J Steroid Biochem Mol Biol*. 2014; 143:160-173.
15. Carey LA, Perou CM, Livasy CA, Dressler LG, Cowan D, Conway K, Karaca G, Troester MA, Tse CK, Edmiston S *et al*. Race, breast cancer subtypes, and survival in the Carolina Breast Cancer Study. *JAMA*. 2006; 295(21):2492-2502.
16. Samaan NA, Buzdar AU, Aldinger KA, Schultz PN, Yang KP, Romsdahl MM, Martin R. Estrogen receptor: a prognostic factor in breast cancer. *Cancer*. 1981; 47(3):554-560.
17. Bizzi A, Codegani AM, Landoni F, Marelli G, Marsoni S, Spina AM, Torri W, Mangioni C. Steroid receptors in epithelial ovarian carcinoma: relation to clinical parameters and survival. *Cancer Res*. 1988; 48(21):6222-6226.
18. Yang XY, Xi MR, Yang KX, Yu H. Prognostic value of estrogen receptor and progesterone receptor status in young Chinese ovarian carcinoma patients. *Gynecol Oncol*. 2009; 113(1):99-104.
19. Liew PL, Hsu CS, Liu WM, Lee YC, Lee YC, Chen CL. Prognostic and predictive values of Nrf2, Keap1, p16 and E-cadherin expression in ovarian epithelial carcinoma. *Int J Clin Exp Pathol*. 2015; 8(5):5642-5649.
20. Khandakar B, Mathur SR, Kumar L, Kumar S, Datta Gupta S, Iyer VK, Kalaivani M. Tissue biomarkers in prognostication of serous ovarian cancer following neoadjuvant chemotherapy. *Biomed Res Int*. 2014; 2014:401245.
21. Krauss K, Stickeler E. Endocrine Therapy in Early Breast Cancer. *Breast Care*. 2020; 15(4):337-346.
22. Lazennec G. Estrogen receptor beta, a possible tumor suppressor involved in ovarian carcinogenesis. *Cancer Lett*. 2006; 231(2):151-157.
23. Liu J, Guo H, Mao K, Zhang K, Deng H, Liu Q. Impact of estrogen receptor-beta expression on breast cancer prognosis: a meta-analysis. *Breast Cancer Res Treat*. 2016; 156(1):149-162.

24. Rutherford T, Brown WD, Sapi E, Aschkenazi S, Munoz A, Mor G. Absence of estrogen receptor-beta expression in metastatic ovarian cancer. *Obstet Gynecol.* 2000; 96(3):417-421.
25. Zhao D, Zhang F, Zhang W, He J, Zhao Y, Sun J. Prognostic role of hormone receptors in ovarian cancer: a systematic review and meta-analysis. *Int J Gynecol Cancer.* 2013; 23(1):25-33.
26. Shen Z, Luo H, Li S, Sheng B, Zhao M, Zhu H, Zhu X. Correlation between estrogen receptor expression and prognosis in epithelial ovarian cancer: a meta-analysis. *Oncotarget.* 2017; 8(37):62400-62413.
27. Vassallo J, Pinto GA, Alvarenga M, Zeferino LC, Chagas CA, Metze K. Comparison of Immunoexpression of 2 Antibodies for Estrogen Receptors (1D5 and 6F11) in Breast Carcinomas Using Different Antigen Retrieval and Detection Methods. *Appl Immunohistochem Mol Morphol.* 2004:177-182.
28. Huang Z, Zhu W, Szekeres G, Xia H. Development of New Rabbit Monoclonal Antibody to Estrogen Receptor. *Appl Immunohistochem Mol Morphol.* 2005; 13(1):91-95.
29. Pertschuk LP, Feldman JG, Kim Y-D, Braithwaite L, Schneider F, Braverman AS, Axiotis C. Estrogen receptor immunocytochemistry in paraffin embedded tissues with ER1D5 predicts breast cancer endocrine response more accurately than H222Spy in frozen sections or cytosol-based ligand-binding assays. *Cancer.* 1996; 77(12):2514-2519.
30. Rossi S, Laurino L, Furlanetto A, Chinellato S, Orvieto E, Canal F, Facchetti F, Dei Tos AP. Rabbit Monoclonal Antibodies. *Am J Clin Pathol.* 2005; 124(2):295-302.
31. Higgins JP, Thomas J, Chandler J, Cumpston M, Li T, Page MJ, Welch VA. *Cochrane handbook for systematic reviews of interventions: John Wiley & Sons; 2019.*
32. RevMan R: Review Manager (RevMan)(Version 5.4). In.: The Nordic Cochrane Centre, The Cochrane Collaboration Copenhagen, Denmark; 2014.
33. Aust S, Bachmayr-Heyda A, Pateisky P, Tong D, Darb-Esfahani S, Denkert C, Chekerov R, Sehouli J, Mahner S, Van Gorp T *et al.* Role of TRAP1 and estrogen receptor alpha in patients with ovarian cancer -A study of the OVCAD consortium. *Mol Cancer.* 2012; 11(1).
34. Aust S, Horak P, Pils D, Pils S, Grimm C, Horvat R, Tong D, Schmid B, Speiser P, Reinthaller A *et al.* The prognostic value of estrogen receptor beta and proline-, glutamic acid- and leucine-rich protein 1 (PELP1) expression in ovarian cancer. *BMC Cancer.* 2013; 13(1).
35. Battista MJ, Mantai N, Sicking I, Cotarelo C, Weyer V, Lebrecht A, Solbach C, Schmidt M. Ki-67 as an independent prognostic factor in an unselected cohort of patients with ovarian cancer: Results of an explorative, retrospective study. *Oncol Rep.* 2014; 31(5):2213-2219.

36. Burges A, Brüning A, Dannenmann C, Blankenstein T, Jeschke U, Shabani N, Friese K, Mylonas I. Prognostic significance of estrogen receptor alpha and beta expression in human serous carcinomas of the ovary. *Arch Gynecol Obstet.* 2009; 281(3):511-517.
37. Chan KKL, Wei N, Liu SS, Xiao-Yun L, Cheung AN, Ngan HYS. Estrogen Receptor Subtypes in Ovarian Cancer. *Obstetrics & Gynecology.* 2008; 111(1):144-151.
38. De Sousa Damião R, Fujiyama Oshima C, Stávale J, Gonçalves W. Analysis of the expression of estrogen receptor, progesterone receptor and chicken ovalbumin upstream promoter-transcription factor I in ovarian epithelial cancers and normal ovaries. *Oncol Rep.* 2007.
39. De Stefano I, Zannoni GF, Prisco MG, Fagotti A, Tortorella L, Vizzielli G, Mencaglia L, Scambia G, Gallo D. Cytoplasmic expression of estrogen receptor beta (ER β) predicts poor clinical outcome in advanced serous ovarian cancer. *Gynecol Oncol.* 2011; 122(3):573-579.
40. de Toledo MCS, Sarian LO, Sallum LF, Andrade LLA, Vassallo J, de Paiva Silva GR, Pinto GA, Soares FA, Fonseca CDPP, Derchain SFM. Analysis of the contribution of immunologically-detectable HER2, steroid receptors and of the "triple-negative" tumor status to disease-free and overall survival of women with epithelial ovarian cancer. *Acta Histochem.* 2014; 116(3):440-447.
41. Feng Z, Wen H, Bi R, Ju X, Chen X, Yang W, Wu X. A clinically applicable molecular classification for high-grade serous ovarian cancer based on hormone receptor expression. *Sci Rep.* 2016; 6(1).
42. Jönsson J-M, Arildsen NS, Malander S, Måsbäck A, Hartman L, Nilbert M, Hedenfalk I. Sex Steroid Hormone Receptor Expression Affects Ovarian Cancer Survival. *Transl Oncol.* 2015; 8(5):424-433.
43. Kjaer S, Christensen I, Jacobs I, Gayther S, Christensen L, Høgdall C, Blaakaer J, Høgdall E. Prognostic value of estrogen receptor and progesterone receptor tumor expression in Danish ovarian cancer patients: From the 'MALOVA' Ovarian Cancer Study. *Oncol Rep.* 2007.
44. Lee P, Rosen DG, Zhu C, Silva EG, Liu J. Expression of progesterone receptor is a favorable prognostic marker in ovarian cancer. *Gynecol Oncol.* 2005; 96(3):671-677.
45. Llauro Fernandez M, Dawson A, Kim H, Lam N, Russell H, Bruce M, Bittner M, Hoenisch J, Scott SA, Talhouk A *et al.* Hormone receptor expression and outcomes in low-grade serous ovarian carcinoma. *Gynecol Oncol.* 2020; 157(1):12-20.
46. Rambau P, Kelemen L, Steed H, Quan M, Ghatage P, Köbel M. Association of Hormone Receptor Expression with Survival in Ovarian Endometrioid Carcinoma: Biological Validation and Clinical Implications. *Int J Mol Sci.* 2017; 18(3).
47. Sieh W, Köbel M, Longacre TA, Bowtell DD, deFazio A, Goodman MT, Høgdall E, Deen S, Wentzensen N, Moysich KB *et al.* Hormone-receptor expression and ovarian cancer survival: an Ovarian Tumor Tissue Analysis consortium study. *Lancet Oncol.* 2013; 14(9):853-862.

48. van Kruchten M, van der Marel P, de Munck L, Hollema H, Arts H, Timmer-Bosscha H, de Vries E, Hospers G, Reyners A. Hormone receptors as a marker of poor survival in epithelial ovarian cancer. *Gynecol Oncol.* 2015; 138(3):634-639.
49. Hammond ME, Hayes DF, Dowsett M, Allred DC, Hagerty KL, Badve S, Fitzgibbons PL, Francis G, Goldstein NS, Hayes M *et al.* American Society of Clinical Oncology/College of American Pathologists guideline recommendations for immunohistochemical testing of estrogen and progesterone receptors in breast cancer. *Arch Pathol Lab Med.* 2010; 134(6):907-922.
50. Geisler JP, Wiemann MC, Miller GA, Geisler HE. Estrogen and progesterone receptor status as prognostic indicators in patients with optimally cytoreduced stage IIIc serous cystadenocarcinoma of the ovary. *Gynecol Oncol.* 1996; 60(3):424-427.
51. Schlumbrecht MP, Xie S-S, Shipley GL, Urbauer DL, Broaddus RR. Molecular clustering based on ER α and EIG121 predicts survival in high-grade serous carcinoma of the ovary/peritoneum. *Mod Pathol.* 2010; 24(3):453-462.
52. Bogina G, Zamboni G, Sapino A, Bortesi L, Marconi M, Lunardi G, Coati F, Massocco A, Molinaro L, Pegoraro C *et al.* Comparison of Anti-Estrogen Receptor Antibodies SP1, 6F11, and 1D5 in Breast Cancer. *Am J Clin Pathol.* 2012; 138(5):697-702.
53. Cheang MCU, Treaba DO, Speers CH, Olivotto IA, Bajdik CD, Chia SK, Goldstein LC, Gelmon KA, Huntsman D, Gilks CB *et al.* Immunohistochemical Detection Using the New Rabbit Monoclonal Antibody SP1 of Estrogen Receptor in Breast Cancer Is Superior to Mouse Monoclonal Antibody 1D5 in Predicting Survival. *J Clin Oncol.* 2006; 24(36):5637-5644.
54. Kornaga EN, Klimowicz AC, Guggisberg N, Ogilvie T, Morris DG, Webster M, Magliocco AM. A systematic comparison of three commercial estrogen receptor assays in a single clinical outcome breast cancer cohort. *Mod Pathol.* 2016; 29(8):799-809.
55. Brotherick I, Lennard TWJ, Cook S, Johnstone R, Angus B, Winthereik MP, Shenton BK. Use of the biotinylated antibody DAKO-ER 1D5 to measure oestrogen receptor on cytokeratin positive cells obtained from primary breast cancer cells. *Cytometry.* 1995; 20(1):74-80.
56. Chantalat E, Boudou F, Laurell H, Paliarne G, Houtman R, Melchers D, Rochaix P, Filleron T, Stella A, Burlet-Schiltz O *et al.* The AF-1-deficient estrogen receptor ER α 46 isoform is frequently expressed in human breast tumors. *Breast Cancer Res.* 2016; 18(1):123.
57. Fowler AM, Solodin N, Preisler-Mashek MT, Zhang P, Lee AV, Alarid ET. Increases in estrogen receptor- α concentration in breast cancer cells promote serine 118/104/106-independent AF-1 transactivation and growth in the absence of estrogen. *FASEB J.* 2004; 18(1):81-93.

58. Haldosén L-A, Zhao C, Dahlman-Wright K. Estrogen receptor beta in breast cancer. *Mol Cell Endocrinol.* 2014; 382(1):665-672.
59. Chan KKL, Siu MKY, Jiang YX, Wang JJ, Wang Y, Leung THY, Liu SS, Cheung ANY, Ngan HYS. Differential expression of estrogen receptor subtypes and variants in ovarian cancer: effects on cell invasion, proliferation and prognosis. *BMC Cancer.* 2017; 17(1):606.
60. Paleari L, Gandini S, Provinciali N, Puntoni M, Colombo N, DeCensi A. Clinical benefit and risk of death with endocrine therapy in ovarian cancer: A comprehensive review and meta-analysis. *Gynecol Oncol.* 2017; 146(3):504-513.
61. Langdon SP, Gourley C, Gabra H, Stanley B. Endocrine therapy in epithelial ovarian cancer. *Expert Rev Anticancer Ther.* 2017; 17(2):109-117.

Figures

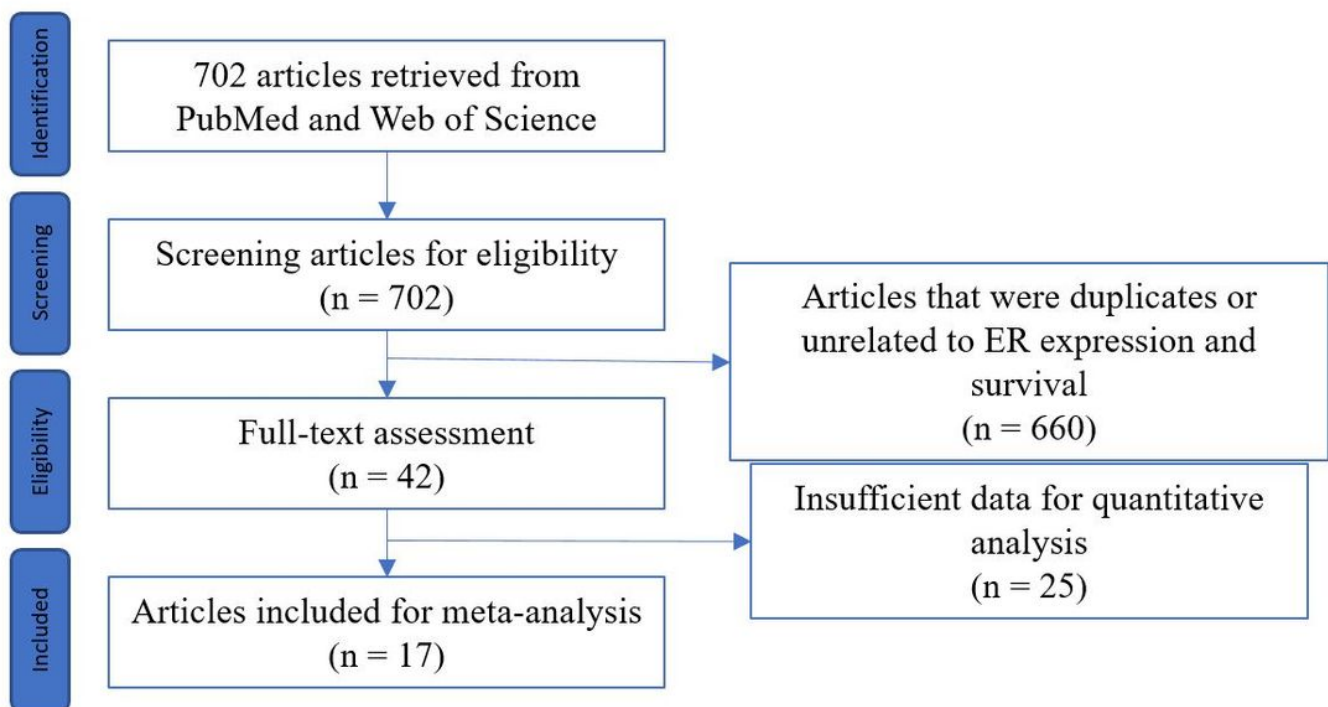


Figure 1

Selection of articles for the meta-analysis.

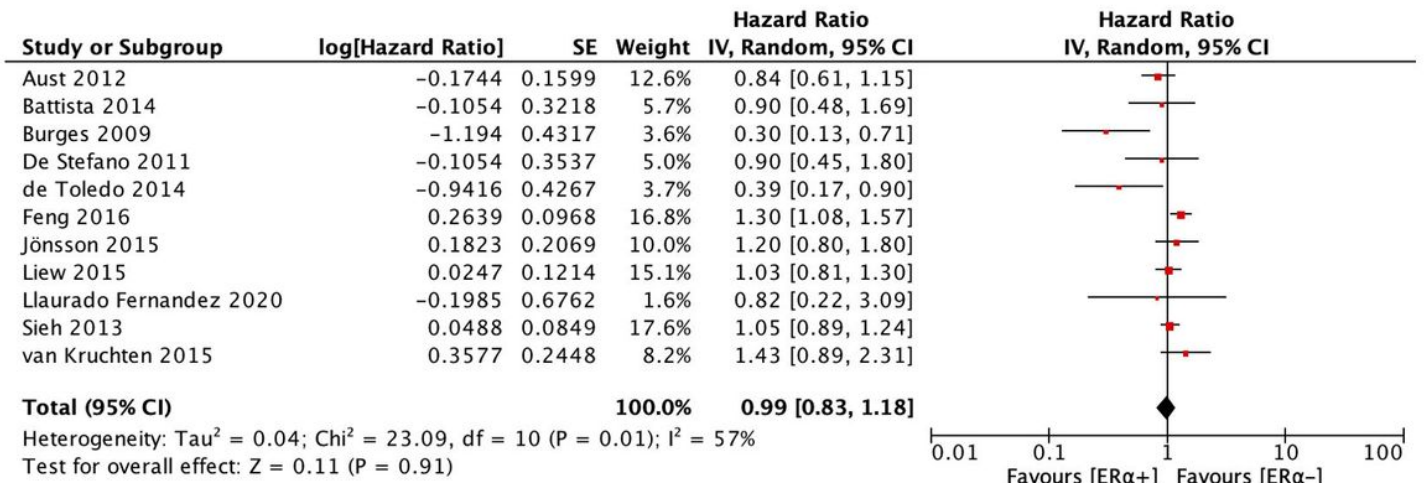


Figure 2

Forest plot (HR and 95% CI) of meta-analysis of impact of ER α expression on PFS.

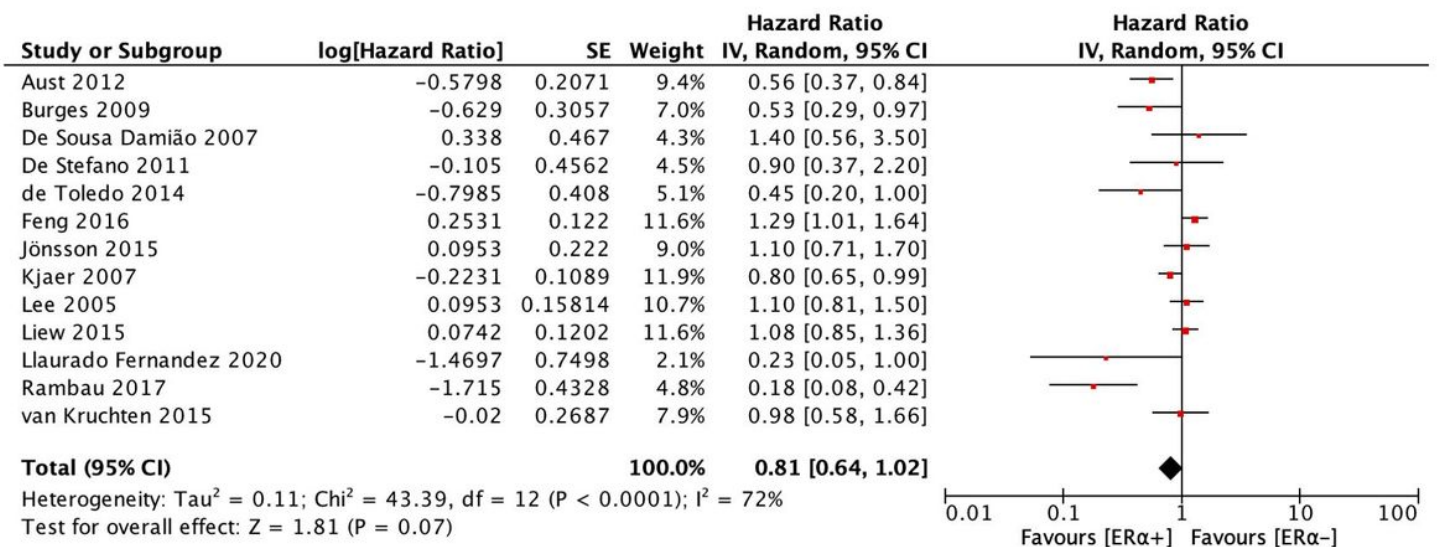


Figure 3

Forest plot (HR and 95% CI) of meta-analysis of impact of ER α expression on OS.

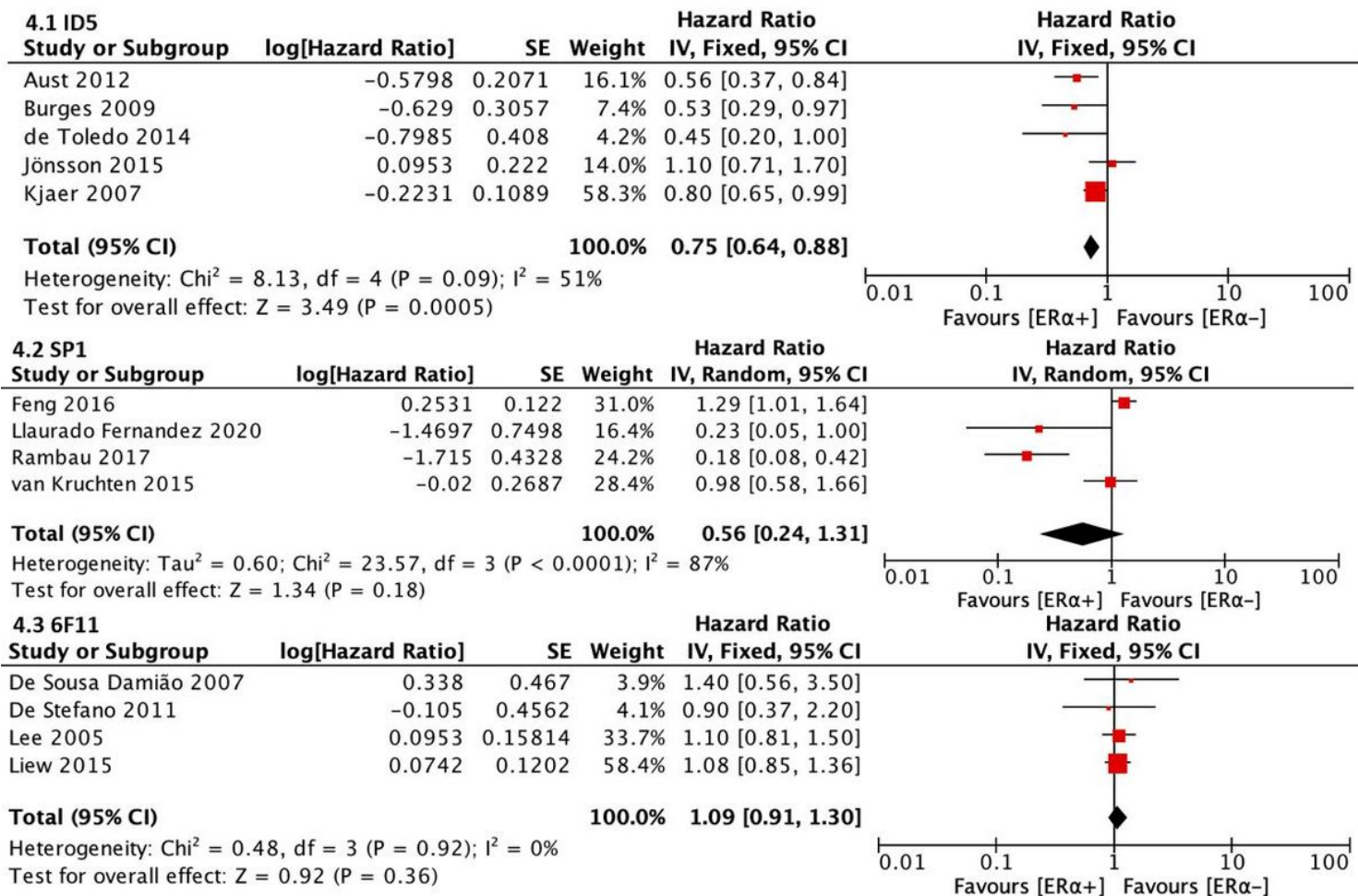


Figure 4

Forest plot (HR and 95% CI) of the subgroup meta-analysis of ER α expression and OS.

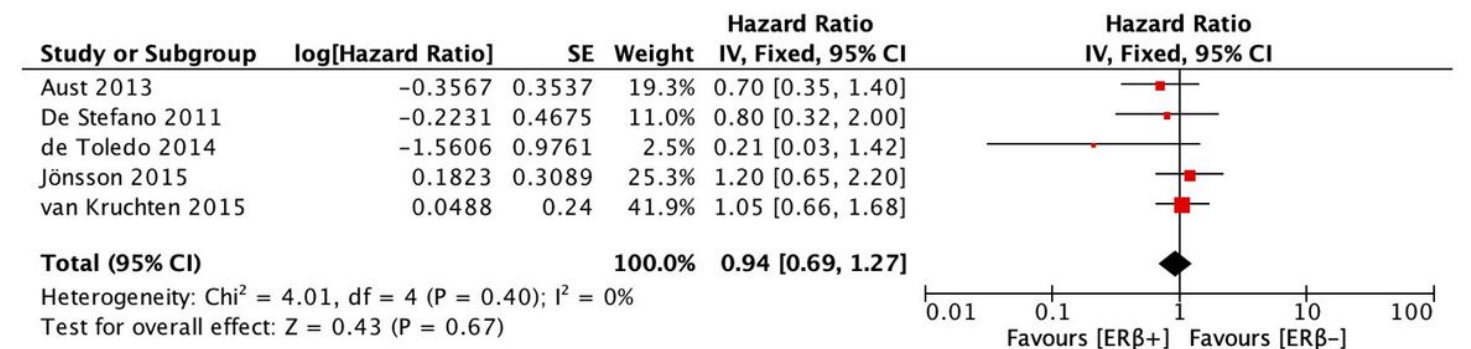


Figure 5

Forest plot (HR and 95% CI) of meta-analysis of impact of ER β expression on PFS.

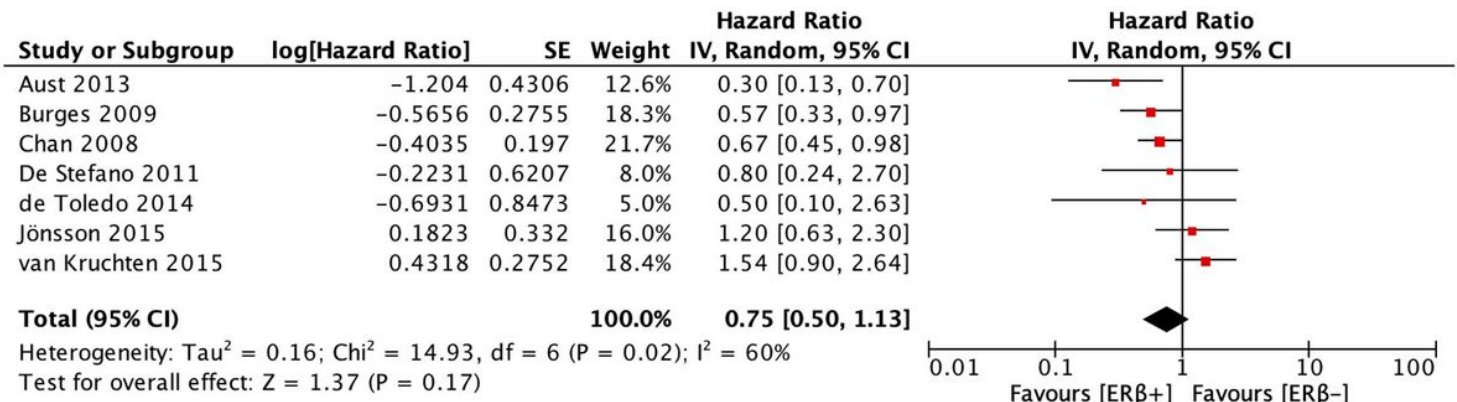


Figure 6

Forest plot (HR and 95% CI) of meta-analysis of impact of ERβ expression on OS.

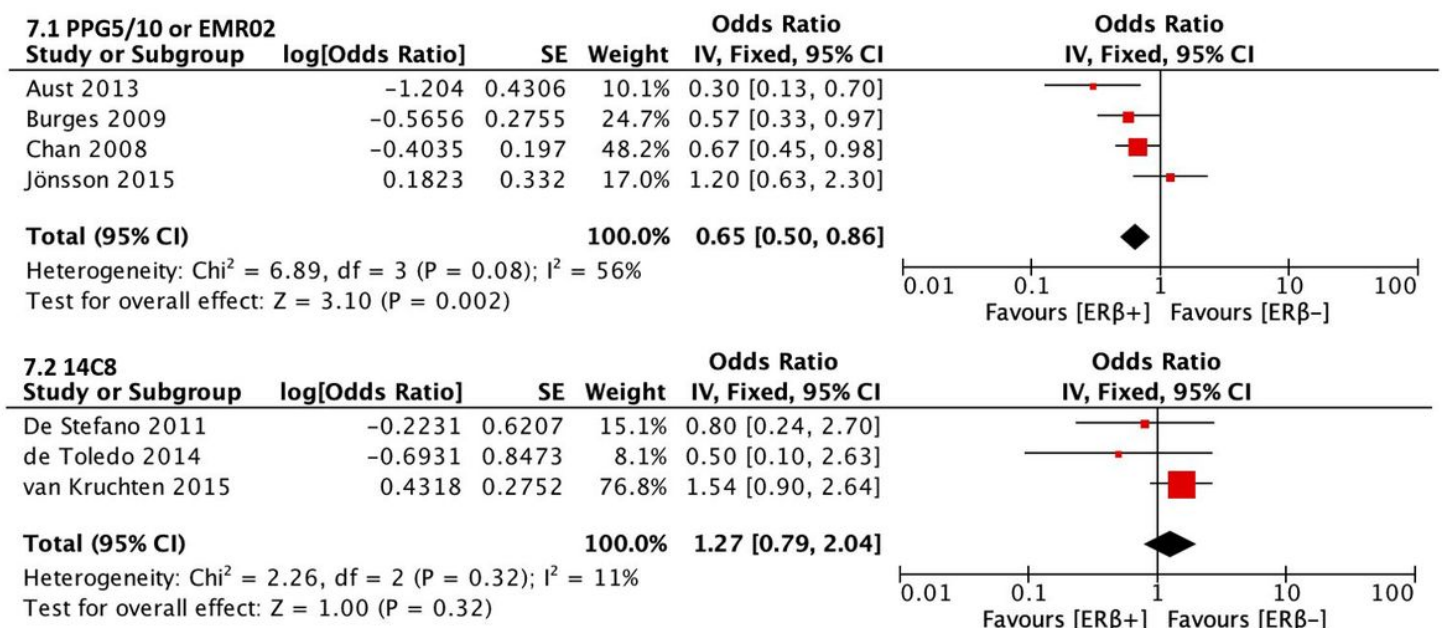


Figure 7

Forest plot (HR and 95% CI) of the subgroup meta-analysis of ERβ expression and OS.