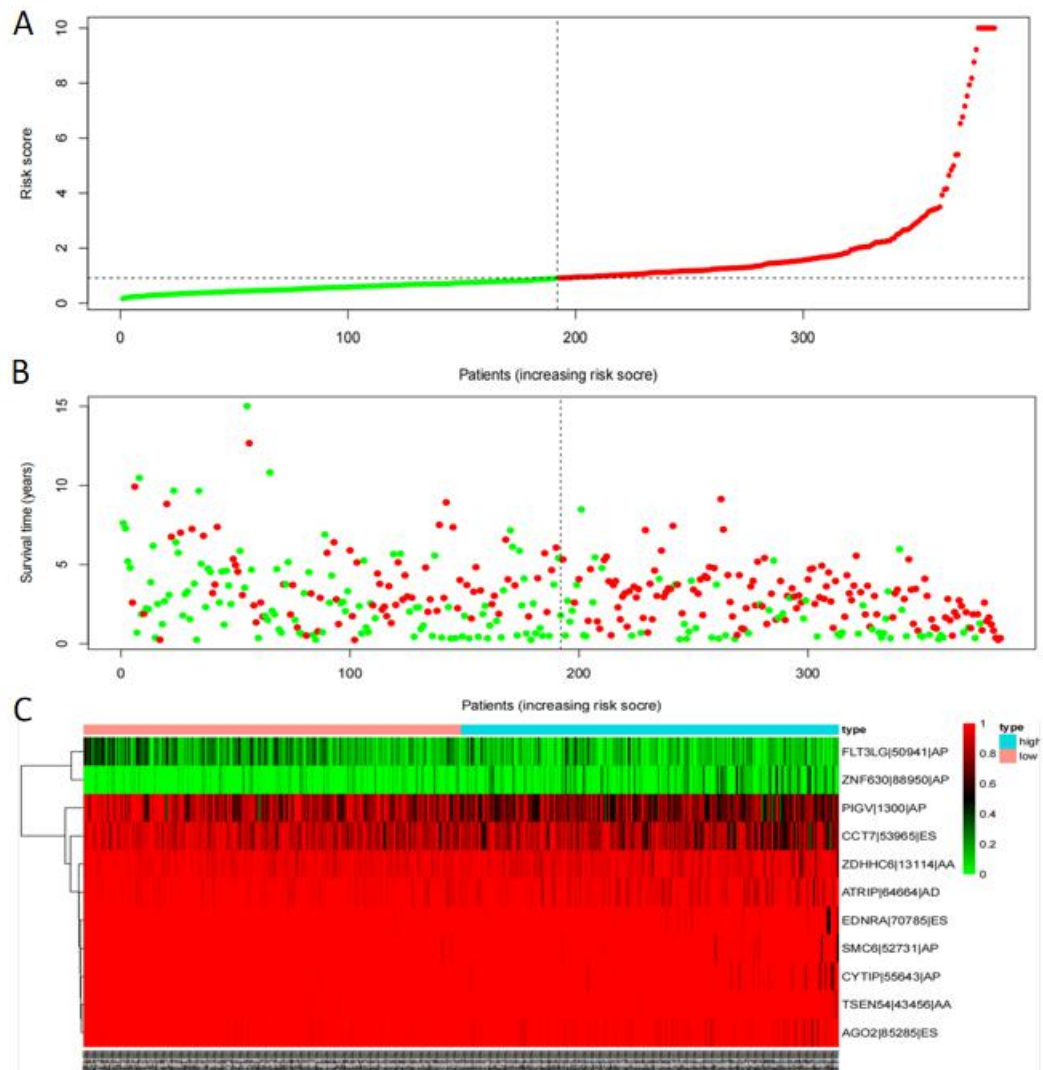


Supplementary Figure 1. Prognostic signatures of survival-related AS events constructed based on Lasso Cox analysis. AA cohort (A), AD cohort (B), AP cohort (C), AT cohort (D), ES cohort (E), ME cohort (F), RI cohort (G), and the whole cohort (H).



Supplementary Figure 2. Patients were then divided into high-risk and low-risk subgroups according to the median risk score of 11-AS events. The upper part is the risk score of each individual (A). The middle part is the survival status of each individual (green dots represent survival and red dots represent death) (B). The bottom part is the heatmap of AS events. The color transition from green to red indicates the increasing PSI score of corresponding AS events from low to high (C).

Supplementary Table1.Clinical parameters of patients from the TCGA

Parameter/Feature	OV
	(n=544)
Age, years (mean \pm SD)	59.29 \pm 11.38
Gender, female	544
Tumor grade	
G1	6 (1.1)
G2	66 (12.1)
G3	459 (84.4)
G4	1 (0.2)
GB	1 (0.2)
GX	9 (1.6)
unknown	2 (0.4)