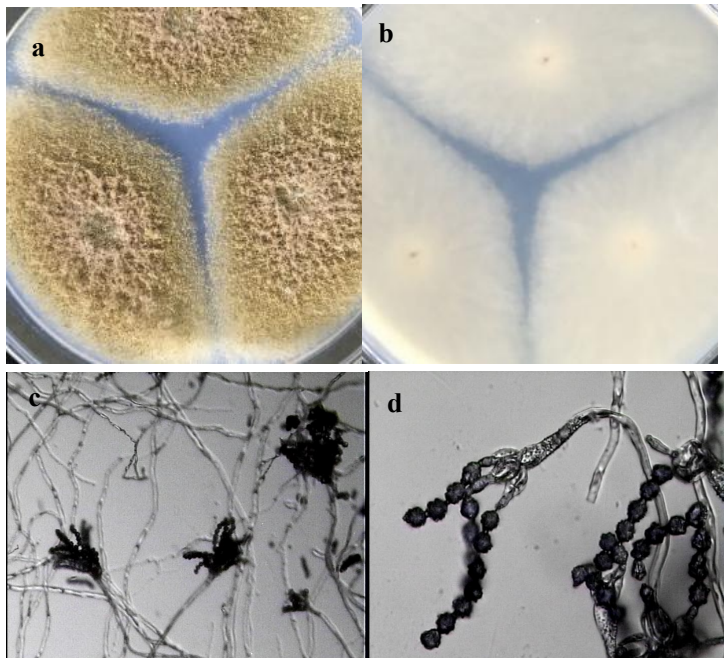


Additional file 1: Figure S1. Colony characteristics (a, b) and conidial structure (c, d) of strain PT-6.

(a): Front on PDA medium at 25 °C for 7 days. (b): Back on PDA medium at 25 °C for 7 days.

(c): Mature conidia heads, conidia stems and antipodal cells (200×). (d): Hyphae, conidia stems and conidia (400×).



Additional file 1: Figure S2. Colony characteristics (a, b) and conidial structure (c, d) of strain PT-7.

(a): Front on PDA medium at 25 °C for 7 days. (b): Back on PDA medium at 25 °C for 7 days.

(c) Conidia heads(200×). (d): Conidia stems, sterigmas and conidia (400×).

ITS sequence of strain PT-6 (502 bp):

```
1ACCCGTGAATACCTGACCAACGTTGCTTCGGCGGTGCGCTCCCCCGGGG50
51GCAGCCGCCGGAGACCACACCGAACCTCTTGTTATAGCGTGTCGTCTGAG100
101CTTGATACAAGCAAACCTAATTAACCTTTCAACAATGGATCTCTTGTT150
151CCGGCATCGATGAAGAACGCAGCGAACTGCGATAAGTAATGTGAATTGCA200
201GAATTCAGTGAATCATCGAGTCTTTGAACGCACATTGCGCCCCCTGGCAT250
251TCCGGGGGGCATGCCTGTCCGAGCGTCATTGCTGCCCTTCAAGCCCGGCT300
301TGTGTGTTGGGTGCTCGTCCCCCGGGGACGGGCCCAGAAAGGCAGCGG350
351CGGCACCGCGTCTGGTCCTCGAGCGTATGGGGCTTTGTCACCCGCTCGT400
401TTAGGGCCGGCCGGGCGCCAGCCGGCGTCTCCAAACCTTTTATTTTACCA450
451GGTTGACCTCGGATCAGGTAGGGATACCCGCTGAACTTAAGCATATCAAT500
501AA502
```

Calmodulin sequence of strain PT-6 (694 bp):

```
1TTTGTAGTCCCATATGGTATTACATAAACTACCGGTCGCCATTTAAGAAT50
51CACTAACTTACCCTTTTCCGCGTGAAACAGGACAAGGATGGCGATGGTTA100
101GTGCAATTCTCGCGCCATTTATTCCGGCGATGTTATCGCATAACGCCCTA150
151AAAATATCCAGGAAATTTGGTCGCATTTACTGCTCTGGTATTAATATATG200
201CGTGTAGGCCAGATCACCACCAAGGAACCTCGGCACTGTGATGCGCTCACT250
251CGGCCAGAATCCCTCCGAGTCCGAACTTCAGGACATGATCAACGAGGTCG300
301ACGCCGACAACAATGGCACCATTGACTTTCCAGGTATTCTATTCCGGCTGT350
351TTTTTTCGTGTGCGATAACAATTGGGCAGATCACTGATATTCAAACCAGAG400
401TTCCTCACAATGATGGCCAGAAAGATGAAGGACACCGACTCCGAGGAGGA450
451AATCCGCGAGGCGTTCAAGGTTTTCGACCGTGACAATAATGGTTTTCATCT500
501CGGCTGCCGAGCTACGCCATGTCATGACCTCTATTGGCGAGAAGCTCACC550
551GATGATGAAGTCGATGAGATGATCCGTGAGGCAGACCAGGATGGTGACGG600
601CCGAATTGACTGTACGTTGACCGTTCCAGTTATACAGTTATACTCGATGT650
651GCAAGAATTGATGCTAATAATTCTTCAGACAACGAATTCGTCCA694
```

Additional file 1: Figure S3. The received sequences of strain PT-6 (502 bp ITS sequence and 694 bp calmodulin sequence).

ITS sequence of strain PT-7 (532 bp):

```
1 CCTCCCACCCGTGTTTACTGTAACCTTAGTTGCTTCGGCGGGCCCGCCTT50
51 TAAGGCCGCGGGGGGCATCAGCCCCGGGCCCGCGCCCGCCGGAGACAC100
101 CACGAACTCTGTCTGATCTAGTGAAGTCTGAGTTGATTGTATCGCAATCA150
151 GTTAAACTTTCAACAATGGATCTCTTGTTCCGGCATCGATGAAGAACG200
201 CAGCGAAATGCGATAACTAGTGTGAATTGCAGAATCCGTGAATCATCGA250
251 GTCTTTGAACGCACATTGCGCCCCCTGGTATTCCGGGGGGCATGCCTGTC300
301 CGAGCGTCATTGCTGCCCATCAAGCACGGCTTGTGTGTTGGGTCGTCGTC350
351 CCCTCTTCGGGGGGGACGGGCCCAAAGGCAGCGGCGCACCCGCTCCGA400
401 TCCTCGAGCGTATGGGGCTTTGTACCCGCTCTGTAGGCCCGGCCGGCGC450
451 TTGCCGAACGCAAAACAACCATTCTTTCCAGTTGACCTCGGATCAGGTA500
501 GGGATACCCGCTGAACTTAAGCATATCAATAA532
```

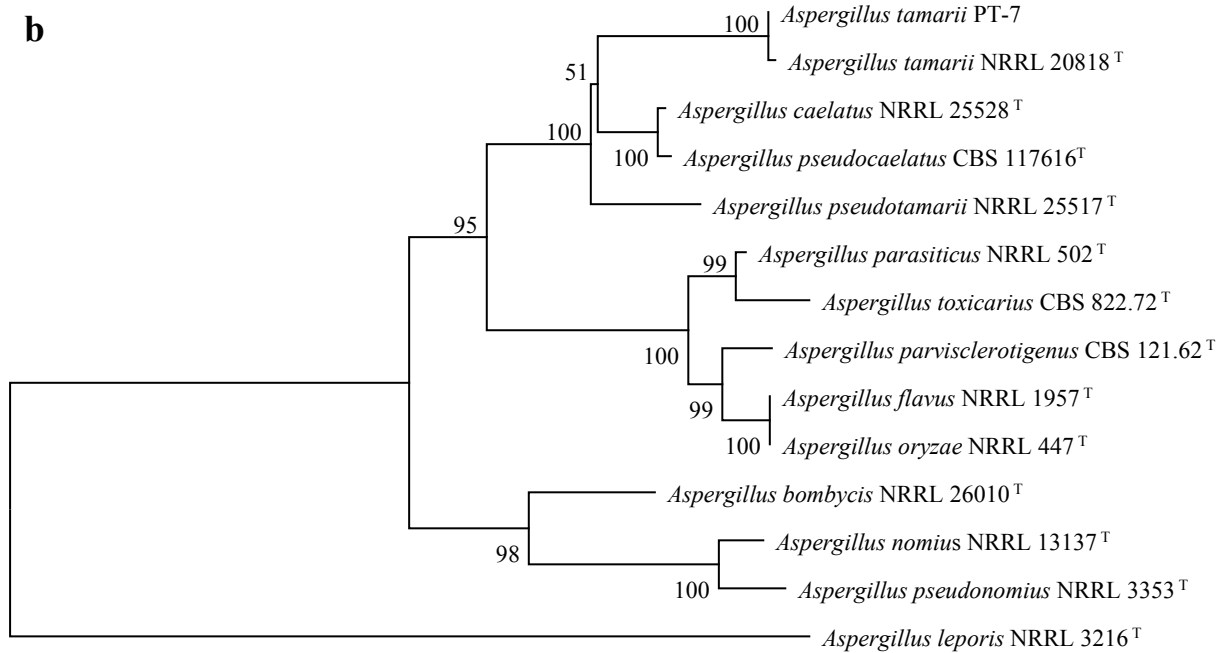
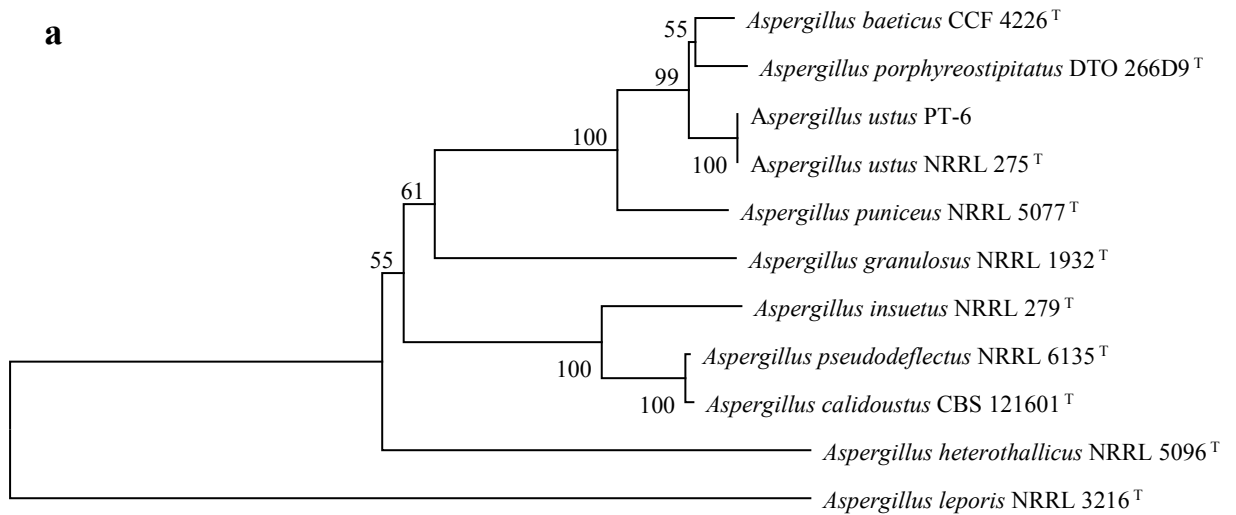
β -tubulin sequence of strain PT-7 (476 bp):

```
1 CAAGGAACTGCACAGAAGCATGAACTCAGATGTGCCCTACTGTGTCTGCC50
51 ACGTGTTTGCTAACATCTTTGCAGGCAGACCATCTCTGGCGAGCACGGCC100
101 TTGACGGCTCCGGTGTGTAAGTACAATCCGTGTACACCTCGAACGAACGA150
151 CAACCAGATGGCATTGGAAGAGTTGGAATGGGTCTGACGGGAAGGATAGT200
201 TACAATGGCTCCTCCGATCTCCAGCTGGAGCGTATGAACGTCTACTTCAA250
251 CGAGGTGCGTACCTCACATTTTTTCAGCCTCTTTGACAACGCTTTGCAAGT300
301 CCTGACCGCTTCTCCAGGCCAGCGGAAACAAGTATGTCCCTCGTGCCGTC350
351 CTTGTGCGATCTTGAGCCCGGTACCATGGACGCCGTCCGTGCCGGTCCCTT400
401 CGGTCAGCTGTTCCGTCCGACAACCTTCGTTTTTCGGCCAGTCCGGTGCTG450
451 GTAACAAC TGGGCCAAGGGTCACTAC476
```

Calmodulin sequence of strain PT-7 (715 bp):

```
1 GTCATGAACGTCGTTTCGCGAAAATCGGCTTTGTGAGTAGACTTTATTTGA50
51 ACACAAGCTGACTGGGCTTCTCTGGGTTTCCTATAGGACAAGGACGGTG100
101 ATGGTTAGTACAGTCTCTTTCATTCCGTCTCCCTTCAAATGCGACCAGTA150
151 TCTTTTAGCCGGCATAGTTTTATCCATTTTCTGTTGATCGGCTGAAGTC200
201 TTTGGCATTGATGGATTGACTTGATATGCAGGCCAGATCACCACCAAGGA250
251 GTTGGGCACTGTCATGCGCTCTCTGGGCCAAAACCCCTCTGAGTCGGAAC300
301 TCCAGGACATGATTAACGAAGTTGACGCCGATAACAATGGCACCATTGAC350
351 TTTCTGGTACGAGAGGGCTTCCGTACATTTTACAAATAAAATAGCTGTT400
401 AATGTTCAACCAGAGTTCCTCACGATGATGGCGAGAAAGATGAAGGATAC450
451 CGACTCTGAGGAGGAGATCCGGGAGGCTTTCAAGGTTTTTCGACCGCGATA500
501 ACAACGGTTTTCATCTCCGCTGCCGAATTGCGCCACGTCATGACCTCCATC550
551 GGCGAGAAGCTTACCGATGACGAAGTTGATGAGATGATCCGCGAGGCGGA600
601 TCAGGATGGTGACGGTCGGATCGACTGTATGTTTCGAGAAGCCCTCCCAC650
651 ACACACCTATTGCGGCTGTGAAACCGGTGATACTGATCGATTTTAGACAA700
701 CGAGTTCGTCCAAC T715
```

Additional file 1: Figure S4. The received sequences of strain PT-7 (532 bp ITS sequence, 476 bp β -tubulin sequence and 715 bp calmodulin sequence).



Additional file 1: Figure S5. Neighbor-Joining consensus trees of (a) *Aspergillus ustus* PT-6 and (b) *Aspergillus tamaris* PT-7.

Identification was based on ITS and calmodulin genes for *A. ustus* PT-6, and ITS, β -tubulin and calmodulin genes for *A. tamaris* PT-7. The numbers over branches represent bootstrap confidence values (%) based on 1000 replicates. The scale bar denotes the nucleotide substitution per sequence.