

A Water Resources Collaborative Allocation Model for the Composite Water Resources-Socioeconomic-Eco-Environment System

Liqin Li (✉ 15910471450@126.com)

Beijing Water Science & Technology Institute

Ting Wang

China Institute of Water Resources and Hydropower Research

Xinmin Xie

China Institute of Water Resources and Hydropower Research

Xingyao Pan

Beijing Water Science & Technology Institute

Research Article

Keywords: Composite system, Water resources collaborative allocation, Multiple loop iteration technique, The Tarim River

Posted Date: October 11th, 2021

DOI: <https://doi.org/10.21203/rs.3.rs-803941/v1>

License:  This work is licensed under a Creative Commons Attribution 4.0 International License.

[Read Full License](#)

20

21 **Keywords:** Composite system; Water resources collaborative allocation; Multiple
22 loop iteration technique; The Tarim River

23

24 **1. Introduction**

25 Water resources are increasingly being recognized as a strategic resource for
26 human survival and development, as well as a major driving force for ecological
27 stability and evolution. Currently, China is facing a severe conflict over water supply
28 among various competing users in economic, social and ecological areas, which
29 makes the problem of water scarcity more complicated than ever before. Overall, an
30 integrated effort is needed to ensure the sustainable utilization of water resources and
31 especially to bring more benefits to the eco-environment. The South-to-North Water
32 Diversion Project is intended to alleviate water scarcity in North and Northwest China,
33 but the long-term overexploitation of water resources in these regions leads to a series
34 of ecological problems such as groundwater recession, vegetation degradation and
35 desertification, which in turn can exacerbate the conflict over water supply among
36 economic, social and ecological users. Thus, the first problem to be solved in water
37 resources allocation is to maintain the dynamic equilibrium of water resources,
38 economy, society, eco-environment systems in order to prevent further deterioration
39 of eco-environment and ensure sustainable utilization of water resources.

40 To this end, some attempts have been made to couple the water resources system
41 with the socioeconomic system (Feng 1991; Liu et al.1993; Xu et al. 1997; Gan et al.

42 1998; Yin et al. 2003). Multi-objective risk analysis, complex adaptive systems and
43 intelligent algorithms are introduced to water resources allocation, and a number of
44 models are established with the objective of maximizing the economic benefit of the
45 dynamically coupled water resources-socioeconomic system. However, such models
46 are subject to criticism for their neglect of the ecological system. The frequent
47 occurrence of water pollution and water crisis in recent years as a result of rapid
48 social development has prompted the researchers to consider the environmental and
49 ecological consequences and the joint allocation of water quantity and quality in water
50 resources allocation. Now, the focus has shifted from considering only water quantity
51 into thoroughly considering the economic, environmental and ecological demands,
52 and much theoretical and practical progress has been made in this field (Afzal et al.
53 1992; Fleming et al. 1995; Rmcwmb 1997; River Murray Catchment Water
54 Management Board.1997; Percia et al.1997; Wang et al. 1998; Xie et al. 2000; Tewe
55 et al. 2001; Xie et al. 2002; Wang et al. 2003; Yang et al. 2003; Zhao et al. 2007; Jiang
56 et al. 2008; Zhou et al. 2009). It is noted that, despite the recognition of the need to
57 consider the economic, environmental and ecological water demand and supply in
58 water resources allocation, previous studies have focused specifically on the
59 optimization algorithms for water resources allocation and the water demand of the
60 eco-environment system and, more importantly, the water resources, economy, society,
61 and eco-environment systems are considered in isolation without integrating them into
62 a composite system (Zhou 2015; Wang et al. 2017&2019; Shen et al. 2021) .

63 In this study, a composite water resources-socioeconomic-eco-environment

64 system (hereafter referred to as “composite system” for short) is proposed, in which
65 the coordinated control and optimized allocation are combined to quantify the key
66 control parameters and order parameters of the composite systems considering the
67 coupling relationships among the subsystems, and a coordinated water resource
68 allocation model is established for the composite system using the multiple coupling
69 and cyclic iterative method. The proposed model has been successfully applied to the
70 Tarim River basin in northwestern China.

71 **2. Methodology**

72 **2.1 Generalization and equilibrium of the composite system**

73 **2.1.1 Generalization of the composite system**

74 The composite system is composed of three closely interconnected systems,
75 including the water resources system that consists of natural and social water cycle
76 subsystems, economic and social system that consists of population, national economy,
77 land use and agriculture subsystems, and eco-environment system that consists of
78 ecology and environment subsystems. Given their important natural, social, economic,
79 eco-environment attributes, water resources constitute an important link in the
80 coupling of the three systems, through which the three systems and their respective
81 subsystems interact and compete with each other in a complex manner, as
82 schematically shown in Fig. 1. The essence of the coordinated development of the
83 composite system is the regulation of the water resources system, economic and social
84 system, and eco-environment system as a whole. It is clear that due to water scarcity,
85 environmental vulnerability and limited environmental capacity, an appropriate

86 regulation should ensure good dynamic balance and development of the three systems
87 and their respective subsystems, so that the composite system can better adapt to
88 environmental challenges and the subsystems can operate more coordinately and
89 effectively. This makes it possible for the subsystems to respond quickly and
90 effectively to external changes, and for the composite system to realize structural,
91 functional, temporal and spatial coordination.

92 **2.1.2 Balance of the three systems**

93 The purpose of the water resources allocation in a composite system is to ensure
94 the dynamic balance among the water resources system, economic and social system
95 and eco-environment system, which is expected to contribute to efficient utilization of
96 water resources, sound economic and social development, reasonable population
97 growth, equitable social welfare, and good ecological environment. Specifically, the
98 quantitative indicators considered in this study include the total water consumption
99 balance and groundwater extraction and recharge balance for the water resources
100 system, water demand-supply balance and water-soil balance for the economic
101 and social system, and ecological balance and water-salt balance for the
102 eco-environment system, which are described as follows.

103 **(1) Water resources system**

104 The total water consumption balance: based on the relationships among the total
105 inflow (precipitation and water flowed into the basin), evapotranspiration (net water
106 consumption), and outflow (water flowed out of the basin), the total maximum
107 allowable water consumption for economic and ecological purposes is analyzed under

108 the assumption of no eco-environment deterioration. Thus, the purpose here is to
 109 ensure the dynamic balance among inflow (local water production, influx and water
 110 diverted into the basin), water consumption (water consumption in the basin and
 111 water diverted out of the basin), and outflow (water flowed out of the basin).

$$112 \quad W_{bf} + W_n + D_{in} - W_{ec} - W_{elc} - R - D_{ou} = 0 \quad (1)$$

$$113 \quad W_{ec} = W_{elc} + W_{selc} + W_{selc} \quad (2)$$

114 where W_{ec} is the total ecological water consumption, D_{in} and D_{ou} are the
 115 quantity of water diverted into and out of the basin, W_{in} is the influx of surface water
 116 and groundwater, R is the local water production of surface water and groundwater,
 117 W_{elc} is the ecological water consumption for national economy, W_{selc} is the
 118 ecological water consumption for the river, and W_{selc} is the evaporation of phreatic
 119 water, respectively.

120 Groundwater extraction and recharge balance: The exploitable quantity of
 121 groundwater in a region is obtained according to the relationships among groundwater
 122 discharge, recharge and storage changes in a given period. Under the premise that
 123 overexploitation of groundwater should not be exceeded on average, the exploitable
 124 groundwater is taken as the upper limit of the exploitation quantity of groundwater.
 125 The surface water and groundwater allocation model is linked to realize the dynamic
 126 groundwater extraction and recharge balance, which can be expressed as follows:

$$127 \quad Q_r - Q_d = \pm \mu F \frac{\Delta S}{\Delta t} \quad (\text{phreatic water}),$$

$$128 \quad Q_r - Q_d = \pm \mu^* F \frac{\Delta S}{\Delta t} \quad (\text{confined water}) \quad (3)$$

129 where Q_r mainly includes rainfall infiltration, lateral groundwater recharge
 130 (including piedmont lateral recharge and lateral inflow in the flat region), pipeline
 131 leakage, river infiltration, canal infiltration, irrigation and farmland infiltration,
 132 leakage recharge, and well irrigation regression and infiltration from projects such as
 133 reservoirs and ponds; Q_d mainly includes the lateral discharge, spring discharge,
 134 phreatic water evaporation and artificial exploitation. The formulas for calculating
 135 these terms are not given here for simplicity. ΔS refers to the change in groundwater
 136 level; μ and μ^* are the elastic storativity of unconfined and confined aquifers; F is
 137 the area of the balance area; and Δt is the duration of the balance period,
 138 respectively.

139 (2) Socioeconomic system

140 Water demand-supply balance: the water demand-supply balance inside and
 141 outside the river is regulated based on the water resources allocation model.

142 Water-soil balance: water resources are regulated temporally and spatially
 143 according to irrigation area in order to prevent desertification due to overdevelopment
 144 of land in case of water scarcity and soil salinization due to overdevelopment of local
 145 water resources.

$$146 \quad G = 1 - \sum_{i=1}^n (X_i - X_{i-1})(Y_i + Y_{i-1}) \quad (4)$$

147 where X_i ($i=1, 2, \dots, n$) is the cumulative percentage of the farmland
 148 irrigation area in each calculation unit, %; Y_i ($i=1, 2, \dots, n$) is the cumulative
 149 percentage of the available quantity of water resources in each calculation unit, %.
 150 Thus, when $i=1$, $(X_{i-1}, Y_{i-1})=(0, 0)$.

151 **(3) Eco-environment system**

152 The ecological regulation is to improve the adaption and self-restoration
 153 capacities of the eco-environment system by rationally regulating the water quantity
 154 for eco-environment at control cross sections under the dual development model of
 155 the water resources and society.

156 The water-salt regulation is to regulate the water-salt balance based on salt
 157 production, transfer and deposition laws. In this regard, rational exploitation of
 158 groundwater, the irrigation and drainage ratio in the irrigation area, and the irrigation
 159 ratio of canals and wells are important to maintain salt payment balance in the
 160 irrigation area.

161 **2.2 Water Resources Collaborative Allocation Model**

162 **2.2.1 Objective function**

163 **(1) The objective of the economic system**

164 The objective of the economic system is to satisfy the off-stream water demand.
 165 Thus, the water supply should be maximized in order to regulate the order parameter
 166 of the economic system.

$$F_1 = MAX \left\{ \begin{array}{l} \sum_{t=1}^T \sum_{i=1}^I \sum_{j=1}^J \alpha_{sur} (XCSC_{ijt} + XCSI_{ijt} + XCSE_{ijt} + XCSA_{ijt} + XCSR_{ijt} + XCSV_{ijt}) \\ + \sum_{t=1}^T \sum_{i=1}^I \sum_{j=1}^J \alpha_{div} (XCDC_{ijt} + XC DI_{ijt} + XCDE_{ijt} + XCDA_{ijt} + XCDR_{ijt} + XCDV_{ijt}) \\ + \sum_{t=1}^T \sum_{i=1}^I \sum_{j=1}^J \alpha_{grd} (XZGC_{ijt} + XZGI_{ijt} + XZGE_{ijt} + XZGA_{ijt} + XZGR_{ijt} + XCGV_{ijt}) \\ + \sum_{t=1}^T \sum_{i=1}^I \sum_{j=1}^J \alpha_{rec} (XZTI_{ijt} + XZTE_{ijt} + XZTA_{ijt} + XZTV_{ijt}) \end{array} \right\} \quad (5)$$

167

168 where F_1 is the total water supply of the basin, and the higher the F_1 value is,

169 the higher the economic benefit of the water resources optimization allocation will be;
170 α_{sur} , α_{div} , α_{grd} and α_{rec} are the weight coefficients of the supply of surface water,
171 diverted water, groundwater and reclaimed water; $XCSC_{ijt}$, $XCSI_{ijt}$, $XCSE_{ijt}$,
172 $XCSA_{ijt}$, $XCSR_{ijt}$ and $XCSV_{ijt}$ are the surface water supply for urban household,
173 industry, urban ecology, agriculture, rural household and rural ecology in the
174 administrative district j of the sub-basin i at period t, respectively. The supply of
175 diverted water, groundwater and reclaimed water for different water users can be
176 derived in a similar way. Note that reclaimed water should only be supplied for
177 industrial and ecological use; T is the total time period, month; I is the number of
178 sub-basins; and J is the number of administrative districts.

179 (2) The objective of the social system

180 The ultimate goal of the social system is to ensure water supply equity for
181 different industries and regions. Here, the concept of the water supply Gini coefficient
182 (Hu 2004; Shao et al. 2005) is used to optimize the water resources allocation model
183 in different industries and basins, and the order parameters of the social system is
184 determined by minimizing the water supply Gini coefficient.

$$\begin{aligned}
F_2 &= MIN \left\{ \sum_{t=1}^T \sum_{k=1}^K \sum_{k'=2, k' > k}^K \left(\frac{\alpha^k W_{ijt}^k / D_{ijt}^k - \alpha^{k'} W_{ijt}^{k'} / D_{ijt}^{k'}}{T * K * M_{ijt}} \right) \right\} \\
F_3 &= MIN \left\{ \sum_{t=1}^T \sum_{j=1}^J \sum_{j'=2, j' > j}^J \left(\frac{W_{it}^j / D_{it}^j - W_{it}^{j'} / D_{it}^{j'}}{T * J * M_{it}} \right) \right\} \\
M_{ijt} &= \sum_{k=1}^K \frac{\alpha^k W_{ijt}^k}{D_{ijt}^k}; M_{it} = \sum_{j=1}^J \sum_{k=1}^K \frac{W_{ikt}^j}{D_{ikt}^j}; W_{it}^j = \sum_{k=1}^K W_{ikt}^j; D_{it}^j = \sum_{k=1}^K D_{ikt}^j
\end{aligned}$$

185

(6)

186 where F_2 and F_3 are the water supply Gini coefficients for the industry and
187 administrative district, and the smaller the F_2 and F_3 values are, the more equitable

188 the water resources allocation in different industries and administrative districts will
189 be; W_{ijt}^k and D_{ijt}^k are the water supply and demand of the industry k in the
190 administrative district j of the sub-basin i at period t ; k and k' are the industry k
191 and k' , including urban household, industry, urban ecology, agriculture, rural
192 household and rural ecology; K is the number of industries; α^k is the water supply
193 priority order parameter of industry k ; $W_{ijt}^{k'}$, $D_{ijt}^{k'}$ and $\alpha^{k'}$ are the same as above;
194 M_{ijt} is the total of the ratio of water supply to water demand of each industry in the
195 administrative district j of the sub-basin i at period t ; M_{it} is the total of the ratio of the
196 water supply to water demand in the administrative district j of the sub-basin i at
197 period t ; W_{it}^j is the total water supply in the administrative district j of the sub-basin i
198 at period t ; and D_{it}^j is the water demand in the administrative district j of the
199 sub-basin i at period t .

200 (3) The objective of the eco-environment system

201 Given the coupled response of the evolution of the ecological system to water
202 cycle, the key measure to ensure good evolution of the ecological system is to ensure
203 the minimum discharge at the control cross section. Thus, the order parameter of the
204 ecological system is determined to maximize the minimum ecological water supply at
205 the control cross section.

$$206 \quad F_4 = \text{MAX} \sum_{t=1}^T \sum_{l=1}^L \left\{ \alpha_t \frac{W_{lt}^e}{D_{lt}^e} \right\} \quad (7)$$

207 where F_4 is the satisfaction degree of ecological water demand, and the higher
208 the F_4 value is, the more satisfied the ecological water demand will be; W_{lt}^e and D_{lt}^e
209 are the ecological discharge and demand of the river at the cross section l at period t ;

210 α_t is the sensitivity coefficient of the discharge at period t, which is dependent on the
 211 discharge time and the period of seed maturation and germination.

212 (4) Overall objective

213 According to the hierarchical principle, appropriate weight coefficients should be
 214 assigned to the water supply objectives of the economic, social, eco-environment
 215 systems considering the quantity of water resources and the tolerance capacity of the
 216 eco-environment in order to optimize the overall water resource allocation.

$$217 \quad Z = \lambda_1 F_1 - \lambda_2 F_2 - \lambda_3 F_3 + \lambda F_4 \quad (8)$$

218 where λ_1 , λ_2 and λ_3 are the weight parameters of the water resources system,
 219 economic and social system, and eco-environment system, respectively.

220 2.2.2 Constraints

221 The constraints considered in this study include available water quantity
 222 constraint, river ecological constraint, reservoir storage capacity constraint and
 223 channel conveyance capacity constraint, which are described in supplementary Table
 224 1 and Table 2.

225 (1) Available water quantity constraints

226 Local available water quantity constraints in the calculation unit:

$$227 \quad XZSFC_{im}^j + XZSFI_{im}^j + XZSFA_{im}^j + XZSFE_{im}^j + XZSFR_{im}^j \leq PWSFC^j \bullet PWSF_{im}^j \quad (9)$$

228 Groundwater water supply constraint in the calculation unit:

$$229 \quad XZGC_{im}^j + XZGI_{im}^j + XZGA_{im}^j + XZGE_{im}^j + XZGR_{im}^j \leq PZGTU^j \bullet PZGW_{im}^j \quad (10)$$

230 Diverted water supply constraint in the calculation unit:

$$231 \quad XCDRC_{im}^j + XCDRI_{im}^j + XCDRA_{im}^j + XCDRE_{im}^j + XCDRR_{im}^j \leq PQD_{im}^j \quad (11)$$

232 Reclaimed water supply constraint in the calculation unit:

$$233 \quad XZTI_{tm}^j + XZTA_{tm}^j + XZTE_{tm}^j \leq PQT_{tm}^j \quad (12)$$

234 Sewage reuse constraint in the calculation unit:

$$235 \quad \sum_{j=1}^n XZTR_{tm}^j \geq \lambda^j \cdot XQTS_{tm}^j \quad (13)$$

236 where $XQTS_{tm}^j$ is the sewage treatment capacity in the calculation unit j, and

237 λ^j is the planned reuse rate of the reclaimed water in the calculation unit j:

$$238 \quad \begin{aligned} XZTR_{tm}^j = & (PZWC_{tm}^j - XZMC_{tm}^j) \cdot PCSCC_{tm}^j \cdot PZTCD_{tm}^j \cdot PZTCT_{tm}^j \cdot PZTCR_{tm}^j \\ & + (PZWI_{tm}^j - XZMI_{tm}^j) \cdot PCSCI_{tm}^j \cdot PZTID_{tm}^j \cdot PZTIT_{tm}^j \cdot PZTIR_{tm}^j \end{aligned} \quad (14)$$

239 (2) River channel ecological constraint

$$240 \quad XRQ_{max}^l \geq XRQ^l \geq XRQ_{min}^l \quad (15)$$

241 where XRQ_{max}^l is the maximum conveyance capacity of the river l, XRQ^l is
 242 the actual conveyance capacity of the river l, and XRQ_{min}^l is the minimal ecological
 243 water demand of the river l.

244 (3) Reservoir storage constraints

$$245 \quad PRSL_{tm}^{ir} \leq XRSV_{tm}^{ir} \leq PRSU_{tm}^{ir} \quad (16)$$

$$246 \quad \text{where } PRSU_{tm}^{ir} = \begin{cases} PRSU1_{tm}^{ir}, & (\text{non-flood season}) \\ PRSU2_{tm}^{ir}, & (\text{flood season}) \end{cases} \quad (17)$$

247 (4) River channel conveyance capacity constraint

$$248 \quad XCSR_{tm}^{ls(u(n),j)} + XCSR_{tm}^{ls(u(n),j)} + XCSR_{tm}^{ls(u(n),j)} + XCSR_{tm}^{ls(u(n),j)} + XCSR_{tm}^{ls(u(n),j)} = XCSR_{tm}^{ls(u(n),j)} \quad (18)$$

$$249 \quad XCDR_{tm}^{ld(u(n),j)} + XCDR_{tm}^{ld(u(n),j)} + XCDR_{tm}^{ld(u(n),j)} + XCDR_{tm}^{ld(u(n),j)} + XCDR_{tm}^{ld(u(n),j)} = XCDR_{tm}^{ld(u(n),j)} \quad (19)$$

$$250 \quad XCPR_{tm}^{lp(u(n),j)} + XCPR_{tm}^{lp(u(n),j)} + XCPR_{tm}^{lp(u(n),j)} + XCPR_{tm}^{lp(u(n),j)} + XCPR_{tm}^{lp(u(n),j)} = XCPR_{tm}^{lp(u(n),j)} \quad (20)$$

$$251 \quad PCSL_{tm}^{ls} \leq XCSR_{tm}^{ls} \leq PCSU_{tm}^{ls} \quad (21)$$

$$252 \quad PCSL_{tm}^{ld} \leq XCDR_{tm}^{ld} \leq PCSU_{tm}^{ld} \quad (22)$$

253 $PCSL_{im}^{lp} \leq XCPRL_{im}^{lp} \leq PCSU_{im}^{lp}$

254 **2.3 Parameter calibration**

255 Model parameters are calibrated by analysing the water consumption of the
256 water resources system in the reference year, which takes into account the surface
257 water supply, groundwater supply, available surface water quantity, economic water
258 consumption coefficient in different regions, discharge at the control cross sections,
259 ratio of economic and ecological water consumption.

260 The main steps involved in model parameter calibration are:

261 (1) The ratio of economic and ecological water consumption is determined and
262 adjusted according to the water consumption balance in different regions, and the unit
263 water storage of the basin is controlled in a given balanced error and should not
264 exceed the available surface water quantity and the exploitable quantity of
265 groundwater;

266 (2) The surface water and groundwater supply quantities, as well as the
267 economical development and water consumption, are adjusted in different
268 administrative districts in order to realize the water supply-demand balance and the
269 water-soil balance in the region;

270 (3) The discharge at control cross sections is determined. At a given inflow, the
271 inflow time can have a substantial effect on the downstream ecology. For instance, the
272 growth of natural vegetation in natural oases or the oasis-desert transitional zones in
273 the arid northwestern China is closely associated with the inflow time, and the
274 maximum ecological benefit is obtained when the inflow time coincides with seed

275 maturity or germination that occurs generally in August or September;

276 (4) The water-salt balance is achieved by rationally adjusting the quantity and
277 process of water demand and discharge, drainage to irrigation ratio, irrigation ratio of
278 canals and wells, and water-saving irrigation in the irrigation areas.

279 **2.4 Multiple-loop iteration technique**

280 In this study, the evolution direction of the system is determined by the order
281 parameters and the optimal solution is obtained by means of successive iteration. As a
282 result, the total water consumption balance, groundwater extraction and recharge
283 balance, water demand-supply balance, water-soil balance, ecological balance, and
284 water-soil balance of the composite system consisting of different water resources and
285 industries can evolve coordinately at different temporal and spatial scales. The
286 calculation steps are summarized as follows (Fig. 2):

287 Step 1: Initialize the parameters and input the key control parameters of the
288 water resources system (e.g., surface runoff, initial exploitable quantity of
289 groundwater $W_j, j=0$) and the economic and social system. The j th water resources
290 allocation is obtained by successive iteration of the composite system;

291 Step 2: The total water consumption balance and the groundwater extraction and
292 recharge balance at the basin level are determined based on the iterative calculation of
293 the water resources model. Step 2-1: The total water consumption balance at the basin
294 level is determined. Specifically, whether the water allocation scheme in different
295 parts of the basin (upstream, midstream and downstream) is reasonable or not and
296 whether the downstream economic, social, eco-environment water demand could be

297 satisfied or not are determined based on the quantity of water flowed out of the basin.
298 If not satisfied, measures would be taken such as increasing water diversion and water
299 supply from unconventional water sources, and then the key control parameters are
300 input again into the composite system in Step 1 and let $j=j+1$; if satisfied, go to Step
301 2-2. Step2-2: The groundwater extraction and recharge balance at the basin level is
302 determined. The parameters associated with the water supply from different sources
303 and the water use in different industries are input to obtain the exploitable quantity of
304 groundwater W_j , where j is the number of iterations, $j=1,2,\dots,n$. If satisfied, go to Step;
305 otherwise, measures are taken such as adjusting the ratio of irrigation water in the
306 irrigation area, and then go to Step 1 to input the key control parameters into the
307 composite system and let $j=j+1$. The previous iteration is repeated until the conditions
308 are satisfied;

309 Step 3: The water demand-supply balance and the water-soil balance at the
310 administrative district level are determined based on the iterative calculation of the
311 economic and social system. Step 3-1: Determine whether the water demand-supply
312 balance is at the administrative district level, such as total water consumption, water
313 demand and supply, and economic water consumption, is met. If not, measures are
314 taken such as adjusting the development scales of different industries, plantation
315 structure, irrigation area, water saving level, and allowable damage depth, then go to
316 Step 1 to input the key control parameters into the composite system and let $j=j+1$;
317 otherwise go to Step 3-2: Determine whether the water-soil balance at the
318 administrative district level is met. In other words, determine whether Gini coefficient

319 is within the threshold. If met, go to Step 4; otherwise measures should be taken such
320 as adjusting the structure of water and soil resources, and the irrigation area could be
321 reduced if it is larger than the farmland area or water-saving irrigation mode can be
322 used, then then go to Step 1 to input the key control parameters into the composite
323 system and let $j=j+1$. The previous iteration is repeated until the conditions are
324 satisfied;

325 Step 4: The ecological balance at key control cross sections and the water-salt
326 balance in the irrigation area are determined based on the iterative calculation of the
327 eco-environment system. Step 4-1: Determine whether the ecological water guarantee
328 rate is met at key control cross sections. If not met, measures are taken to slightly
329 adjust the economic water consumption norm, development scale and river inflow
330 time. Then, go to Step 1 to input the key control parameters into the composite system
331 and let $j=j+1$; otherwise go to Step 4-2. Step 4-2: Determine whether the water-salt
332 balance in the irrigation area is met. If not met, measures are taken to adjust the
333 drainage to irrigation ratio in the irrigation area, then go to Step 1 to input the key
334 control parameters into the composite system and let $j=j+1$; and if it is still not met, go
335 to Step 1 again and let $j=j+1$. The previous iteration is repeated until the conditions
336 are satisfied;

337 Step 5: Output the water resources allocation model.

338 **3. Case Study**

339 **3.1 Study Area and Data**

340 The Tarim River ($E73^{\circ}39' \sim 93^{\circ}45'$; $N34^{\circ}20' \sim 43^{\circ}39'$) is the fifth largest inland

341 river in the world with a total basin area of 1.027 million km², which are presented in
342 Fig. 3. (Thevs et al. 2015) However, the precipitation in the Tarim Basin is extremely
343 scanty with an annual average precipitation of only 116.8 mm, and most precipitation
344 occurs in the period from June to October that accounts for approximately 70~80%
345 of the total annual precipitation. The Tarim River is formed by the confluence of the
346 Yarkant River, Hotan River and Aksu River. Despite an increase in the flow rate of the
347 Tarim River in recent years due to climate change, the water demand of the basin
348 could not be fully met as in the economic and social system, the water consumption
349 due to considerable expansion of cultivated land far exceeds the quantity of water
350 saved by the water-saving irrigation and, as a consequence, the water supply
351 originally for the eco-environment system has to be reduced, thus leading to
352 ecological imbalance and malignant evolution of the eco-environment system.

353 **3.2 Coordinated water resources allocation network**

354 According to the inherent characteristics and present situation of the Tarim River,
355 the planning of water conservancy projects in the basin and the requirement of water
356 resources allocation, the physical elements of the water resources system (e.g.,
357 important water conservancy projects, calculation units, and river or channel
358 confluences) are taken as nodes that are collected by lines representing the water
359 transfer network of the Tarim River basin. Finally, the network is generalized into 39
360 Three-level counties or cities, 45 nodes for hydrological control stations, water
361 diversion, discharge and cross sections, 34 constructed and planned reservoirs, 66
362 surface water supply channels, 140 river segments, and 42 discharge channels. In this

363 study, the Aksu basin is studied as an example, as shown in Fig. 4.

364 **3.3 Parameter calibration and verification**

365 Because a large number of parameters are involved in the network, only some
366 key parameters are calibrated and verified as an example. The discharge processes at
367 control cross sections at the sluices of the Aksu River, the Heniyaz section of the
368 Yarkant River, the Shawta section of the Hotan River, and the No. 66 division gate of
369 the Kaidu-Kongque River are simulated based on the analysis of the water
370 demand-supply balance and the water consumption balance in the reference year and
371 compared with the measurement data (Fig. 5).

372 The results show that the Nash coefficients are over 0.62 for all cross sections
373 with an average of 0.67, indicating that the simulation accuracy is acceptable. The
374 fitting results of water discharge at control cross sections are presented in Table 3.

375 **4. Results Analysis and Discussion**

376 **4.1 Balance of the water resources system**

377 **4.1.1 Total water consumption balance**

378 As illustrated in Fig. 6, At P=50%, the inflow at the Arael section is projected to
379 be 4.85 billion m³ in 2030, and the corresponding discharge is 3.55 billion m³ at the
380 Aksu and Bavutolac sluice of the Aksu River, 0.35 billion m³ at the Heniyaz section
381 of the Yarkant River, and 0.95 billion m³ at the Shawta section of the Hotan River,
382 respectively. In this case, the total water consumption balance can be achieved, which
383 allows sufficient water supply from the water sources to the Tarim main stream and
384 thus causes no ecological problems as the ecological water demand is satisfied in the

385 lower reaches of the Tarim main stream. It is also projected that the discharge is 3.55
386 billion m³ at the Aksu and Bavutolac sluice, 0.88 billion m³ at Erikta section of the
387 Yarkant River, and 1.95 billion m³ at the Lianghe canal head of the Hotan River in
388 2030, respectively, which can meet the ecological water demand of the downstream
389 woodland and meadow of the Aksu River, Hotan River, and Yarkant River.

390 **4.1.2 Groundwater extraction and recharge balance**

391 The groundwater of the Tarim River basin is recharged mainly by surface water
392 infiltration, 38.6% of which is derived from river channel leakage; 53.7% of which is
393 derived from surface water infiltration in the irrigation area (e.g., canal leakage,
394 farmland infiltration, well irrigation regression, reservoir and pond leakage); and only
395 7.7% of which is derived from piedmont lateral recharge and rainfall infiltration.
396 However, it is important to note that the measures taken in the planning level year,
397 such as construction of mountainous reservoirs in the upstream regions of the basin,
398 modification of industrial structure, changes in irrigation regime and the policy of
399 returning farmland to water, can lead to a substantial increase in river channel leakage
400 but a substantial decrease in surface water infiltration in the irrigation area. However,
401 the piedmont lateral recharge and rainfall infiltration remain largely unchanged. On
402 the whole, although the exploitable quantity of groundwater in the Tarim River basin
403 shows a decreasing trend, its available quantity and actual water supply are still within
404 reasonable ranges, as shown in Table 4.

405 **4.2 Balance of the economic and social system**

406 **4.2.1 Water demand-supply balance**

407 The Tarim River basin faces many problems in the reference year, such as water
408 scarcity, low water use efficiency, unreasonable water use structure and environmental
409 degradation, which pose a great threat to the water safety of the basin. In the planning
410 level year, a number of measures are taken to address these problems, such as
411 adjusting the water use structure, returning farmland to water, water-saving irrigation,
412 sewage treatment and reuse, construction of mountainous reservoirs, and water
413 reclamation. As a result, the efficiency of the multi-source water supply system of the
414 Tarim River basin is greatly increased. In terms of water supply, the water resources
415 allocation scheme has put much emphasis on water recycling; in terms of water use,
416 the scheme takes into account the coordination of different industries by optimizing
417 the water use structure, reducing the ratio of agricultural water, and increasing the
418 ratio of industrial and domestic water; while in terms of water supply benefit, the
419 water demand of the Tarim River basin at different probabilities can be met by
420 returning farmland to water to support the industrial development and implementing
421 the water-saving policy to save more water for ecological use. In addition, the
422 reclaimed water is supplied for agricultural, industrial and ecological use, which can
423 not only reduce the water supply from conventional water sources, but can also
424 minimize the impact of sewage on the eco-environment. Thus, the proposal scheme
425 takes into account of social, economic and ecological benefits and thus coordinates
426 the water demand and supply of the water resources system, social and economic
427 system, and the eco-environment system, as shown in Table 5.

428 **4.2.2 Water-soil balance**

429 In 2030, the irrigated farmland area is reduced by 2440000 Mu in the Aksu River
430 basin, 830000 Mu in the Yarkant River basin, 50000 Mu in the Hotan River basin,
431 840000 Mu in the Kaidu-Kongque River basin, and 300000 Mu in the mainstream,
432 and the area in which water-saving irrigation scheme is used is increased by 2580000
433 Mu, 4410000 Mu, 2140000 Mu, 1260000 Mu and 670000 Mu, respectively, with a
434 total decrease of 6.9 billion m³ of economic water. It is noted that the agricultural
435 water-soil balance is gradually increased with the implementation of the policies of
436 returning farmland to water and water-saving irrigation, which are presented in Fig. 7.

437 **4.3 Balance of the eco-environment system**

438 **4.3.1 Ecological balance**

439 As shown in Fig. 8, the ratio of ecological water supply of the Tarim River basin
440 is increased from 44% in the reference year to 54% in 2030. Specifically, it is
441 increased from 46% to 50% in the Aksu River basin, from 27% to 43% in the Yarkant
442 River basin, from 48% to 53% in the Hotan River basin, from 39% to 41% in the
443 Kaidu-Kongque River basin, and from 73% to 83% in the mainstream, respectively,
444 indicating sustainable development of the water resources and river eco-environment
445 of the Tarim River basin.

446 In 2030, large discharge at control cross sections of the Tarim River basin
447 (P=50%) mainly occurs in the period from June to October, which coincide
448 approximately with the period of seed maturity and germination (generally in August
449 and September), and thus the ecological profit can be maximized.

450 **4.3.2 Water-salt balance**

451 As shown in Fig. 9, in the reference year, serious soil salinization occurs mainly
452 in the First Agricultural Division irrigation area of the Aksu River basin, the Second
453 Agricultural Division irrigation area of the Kaidu-Kongque River basin, and the Yuli
454 County in the Tarim River basin. In the planning level year, some effective measures
455 have been taken to optimize irrigation and drainage and improve groundwater
456 utilization, and as a result the ratio of drainage to irrigation in the irrigation area of the
457 Tarim River basin is decreased to 5-30%, and the saline and alkaline land is improved
458 by 69% in 2020 and by 96% in 2030, respectively.

459 **5. Conclusions**

460 In this study, the coupled relationships among the water resources system, the
461 economic and social system, and the eco-environment system are considered, and the
462 order and control parameters are used to establish a multidimensional composite
463 system, which can realize the total water consumption balance and groundwater
464 extraction and recharge balance for the water resources system, water demand-supply
465 balance and water-soil balance for the economic and social system, and ecological
466 balance and water-salt balance for the eco-environment system.

467 Then, a case study is performed with the Tarim River basin, and the results show
468 that under the conditions of conserved inflow series (1956-2000), the annual average
469 water demand in 2030 is estimated to be 17.086 billion m³, the annual average water
470 supply is 16.916 billion m³ (where the supply of surface water, groundwater and
471 reclaimed water is 14.952 billion m³, 1.617 billion m³ and 0.347 billion m³,
472 respectively), the annual average water consumption is 16.916 billion m³ (where the

473 domestic, industrial and agricultural water consumption is 0.687 billion m³, 1.246
474 billion m³ and 14.983 billion m³, respectively). Thus, the total water deficiency is 0.17
475 billion m³ with a water deficiency rate of 0.99%. In 2030, water-saving irrigation is
476 adopted in 12.757 million Mu of new farmland in the Tarim River basin. It is noted
477 that the irrigation area is reduced by 6.217 million Mu and the economic water
478 consumption is reduced by 7.462 billion m³, thus resulting in coordinated evolution
479 and development of the composite system.

480 However, the limitations of this study should also be noted. For instance, the
481 water supply from multiple water sources and the water demand of different
482 subsystems are investigated in this study without considering carbon emission and
483 capture. Thus, the carbon-water coupling mechanism should be considered in water
484 resources allocation in order to reduce carbon emission and increase carbon capture,
485 which can improve and ecological value and sustainable development of water
486 sources.

487

488 **Acknowledgements** The writers also acknowledge the assistance of anonymous
489 reviewers.

490

491 **Declarations**

492

493 **Funding** The paper has no funding.

494

495 **Conflicts of interest/Competing interests** The authors declare no conflict of interest.

496

497 **Availability of data and material** Not applicable.

498

499 **Code availability** Not applicable.

500

501 **Authors Contributions** All authors contributed to the study conception and design.
502 The formulation of overarching research goals, creation of models were performed by
503 Liqin Li. The first draft of the manuscript was written by Ting Wang. The results was
504 analyzed by Xinmin Xie and Xingyao Pan. All authors commented on previous
505 versions of the manuscript, and authors read and approved the final manuscript.

506
507 **Ethical Approval** Not applicable.

508
509 **Consent to Participate** Not applicable.

510
511 **Consent to Publish** The authors confirm that the work described has not been
512 published before, and not under consideration for publication elsewhere. Its
513 publication has been approved by all co-authors, and we agree to publish this article
514 in the journal of WARM by Springer.

515

516 **References**

- 517 Afazl J, Noble DH (1992) Optimization model for alternative use of different quality irrigation
518 waters. *Journal of Irrigation and Drainage Engineering*, 118:218-228.
519 [https://doi.org/10.1061/\(asce\)0733-9437\(1992\)118:2\(218\)](https://doi.org/10.1061/(asce)0733-9437(1992)118:2(218))
- 520 Feng SY (1991) *Water Resources System Engineering*. Hubei Science and Technology Press,
521 China
- 522 Fleming RA, Adams RM, Kim CS (1995) Regulating groundwater pollution: effects of
523 geophysical response assumptions on economic efficiency. *Water Resources Research*,
524 31:1069-1076. <https://doi.org/10.1029/94wr03287>
- 525 Gan H, Yin MW (1998) *Research on Application of Decision Support System for Water Resources*
526 *Planning and Management in Handan City, Hebei Province*. China Institute of Water
527 Resources and Hydropower Research, China
- 528 Hu ZG (2004) A Study of the Best Theoretical Value of Gini Coefficient and Its Concise
529 Calculation Formula. *Economic Research*, 9: 60-69
- 530 Jiang YZ, Zhao HL, Gan ZG et al (2008) Method for reasonable deployment of water resources
531 based on evapotranspiration index. *Journal of Hydraulic Engineering*, 39: 20-725
- 532 Liu JM, Zhang SF, Liu H (1993) A hierarchical model for water supply planning and dispatching
533 optimization of Beijing-Tianjin-Tangshan water resources system. *Progress in Water*

534 Science, 4: 98-105

535 Percia C, Oron G, Mehrez A (1997) Optimal operation of regional system with diverse water
536 quality sources. *Journal of Water Resources Planning and Management, ASCE*, 123: 105-115.
537 [https://doi.org/10.1061/\(asce\)0733-9496\(1997\)123:2\(105\)](https://doi.org/10.1061/(asce)0733-9496(1997)123:2(105))

538 River Murray Catchment Water Management Board (1997) Water allocation plan for the River
539 Murray prescribed watercourse

540 Shao DG, He XC, Huang XF (2005) Optimal water resources deployment model based on
541 maximal net benefit. *Journal of Hydraulic Engineering*, 36: 1050-1056

542 Shen XJ, Wu X, Xie XM et al (2021) Synergetic Theory-Based Water Resource Allocation Model.
543 *Water Resources Management*, 35: 2053-2078. <https://doi.org/10.1007/s11269-021-02766-x>

544 Tewe D, John WL (2001) River basin network model for integrated water quantity/quality
545 management. *Journal of Water Resources Planning and Management, ASCE*, 127: 295-305.
546 [https://doi.org/10.1061/\(asce\)0733-9496\(2001\)127:5\(295\)](https://doi.org/10.1061/(asce)0733-9496(2001)127:5(295))

547 Thevs N, Peng HY, Rozi, A et al (2015). Water allocation and water consumption of irrigated
548 agriculture and natural vegetation in the Aksu-Tarim river basin, Xinjiang, China. *Journal of*
549 *Arid Environments*, 112: 87 – 97. <https://doi.org/10.1016/j.jaridenv.2014.05.028>

550 Wang H, Chen MJ, Qin DY (2003) Research on Reasonable Allocation and Carrying Capacity of
551 Water Resources in Northwest China. Yellow River Water Conservancy Press, Zheng Zhou

552 Wang T, Fang GH, Xie XM et al (2017) A Multi-Dimensional Equilibrium Allocation Model of
553 Water Resources Based on a Groundwater Multiple Loop Iteration Technique, *Water*, 09:718.
554 <https://doi.org/10.3390/w9090718>

555 Wang T, Liu Y, Wang Y et al (2019) A multi-objective and equilibrium scheduling model based on
556 water resources macro allocation scheme. *Water Resources Management*, 33:3355-3375.
557 <https://doi.org/10.1007/s11269-019-02304-w>

558 Wang ZJ, Weng WB, Ma HZ (1998) Study on Planning Method of Water Resources Sustainable
559 Utilization in Arid Inland Area. *Journal of Tsinghua University (Natural Science Edition)*, 01:
560 35-38+60

561 Xie XM, Qin DY, Yu FL et al (2000) Analysis on the Model and Plan of Water Resources Optimal
562 Allocation in Ningxia. *Journal of China Institute of Water Resources and Hydropower*
563 *Research*, 01: 16-26

564 Xie XM, Zhao WS, Pei YS et al (2002) Strategic Research on Optimal Allocation and Sustainable
565 Utilization of Water Resources in Ningxia. Yellow River Water Conservancy Press, Zheng
566 Zhou

567 Xu XY, Wang H, Gan H et al (1997) Theories and methods of macroeconomic water resources
568 planning in North China. Yellow River Water Conservancy Press, Zheng Zhou

569 Yang XL, Liu GL, Gan H (2003) Research on Xinjiang Economic Development and the
570 Reasonable Allocation of Water Resources and Carrying Capacity. Yellow River Water
571 Conservancy Press, Zheng Zhou

572 Yin MW, Xie XM, Wang H et al (2003) Study on the Scheme of Water Resources Allocation
573 System in Anyang City. *China Water Resources*, 14: 14-16

574 Zhao Y, Lu CY, Xiao WH (2007) Study on rational deployment of generalized water resources II.
575 Model. *Journal of Hydraulic Engineering*, 38: 163-170

576 Zhou XN (2015) Research on Multi-Dimensional Coordinated Allocation Model of Water
577 Resources and Its Application. China Institute of Water Resources and Hydropower Research

578 Zhou ZH, Wang H, Qin DY et al (2009) Comprehensive water resources and environment
579 planning based on generalized evaporation transpiration water consumption control I. Theory.
580 Journal of Hydraulic Engineering, 40: 1025-1032

Figures

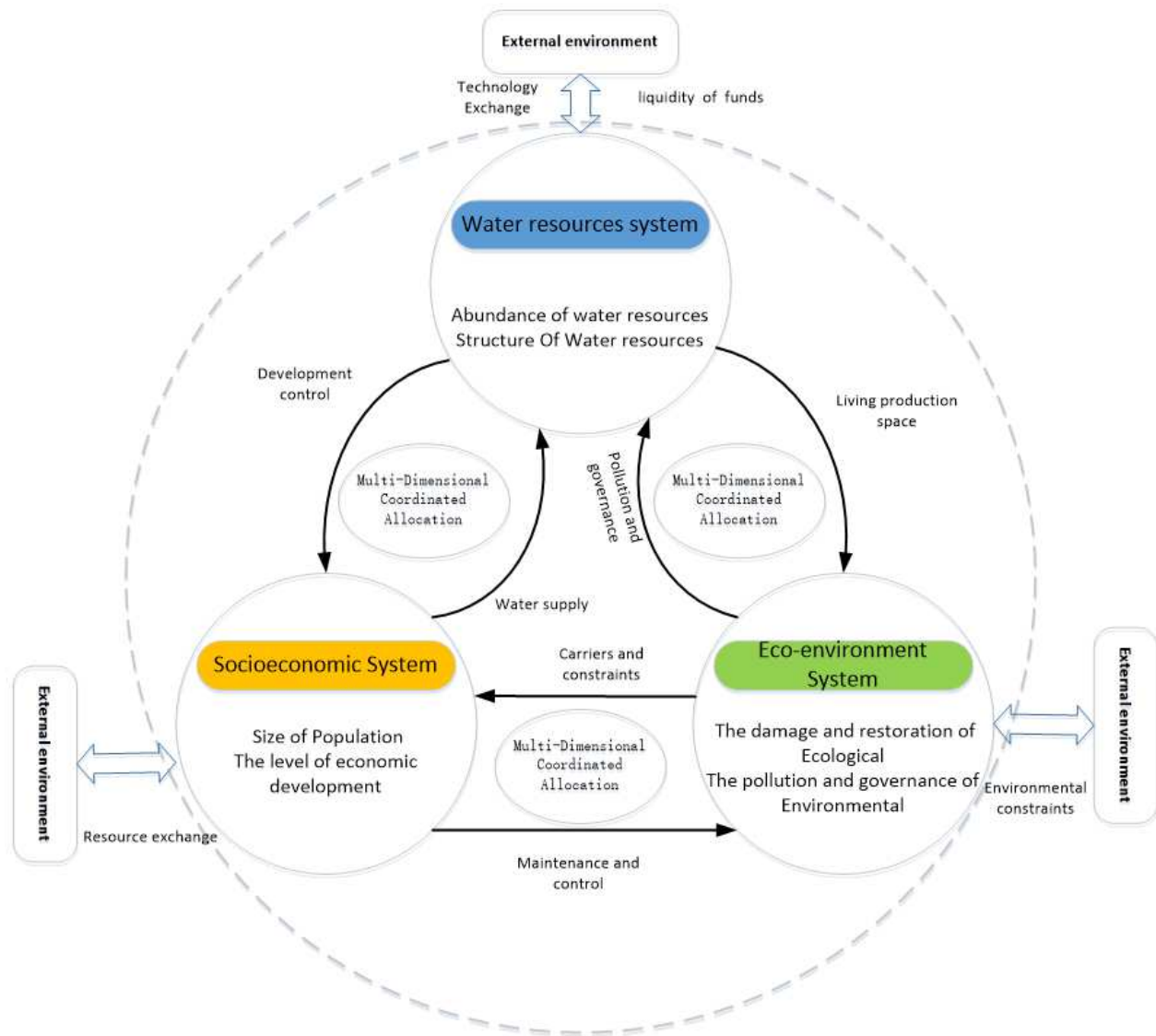


Figure 1

Schematically of composite water resources-socioeconomic-eco-environment system

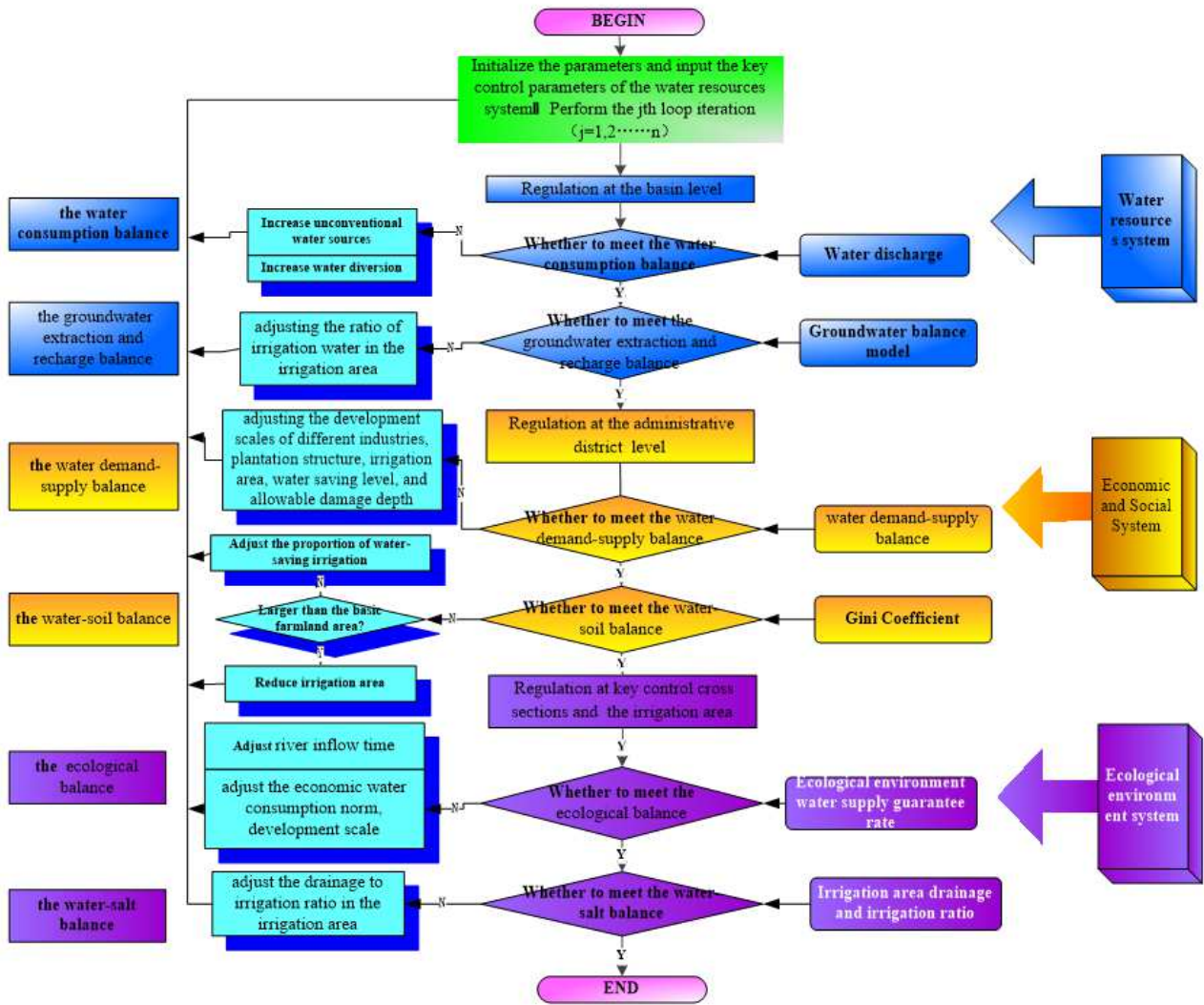


Figure 2

Multi-dimensional collaborative allocation of water resources and multi-cycle iteration process diagram

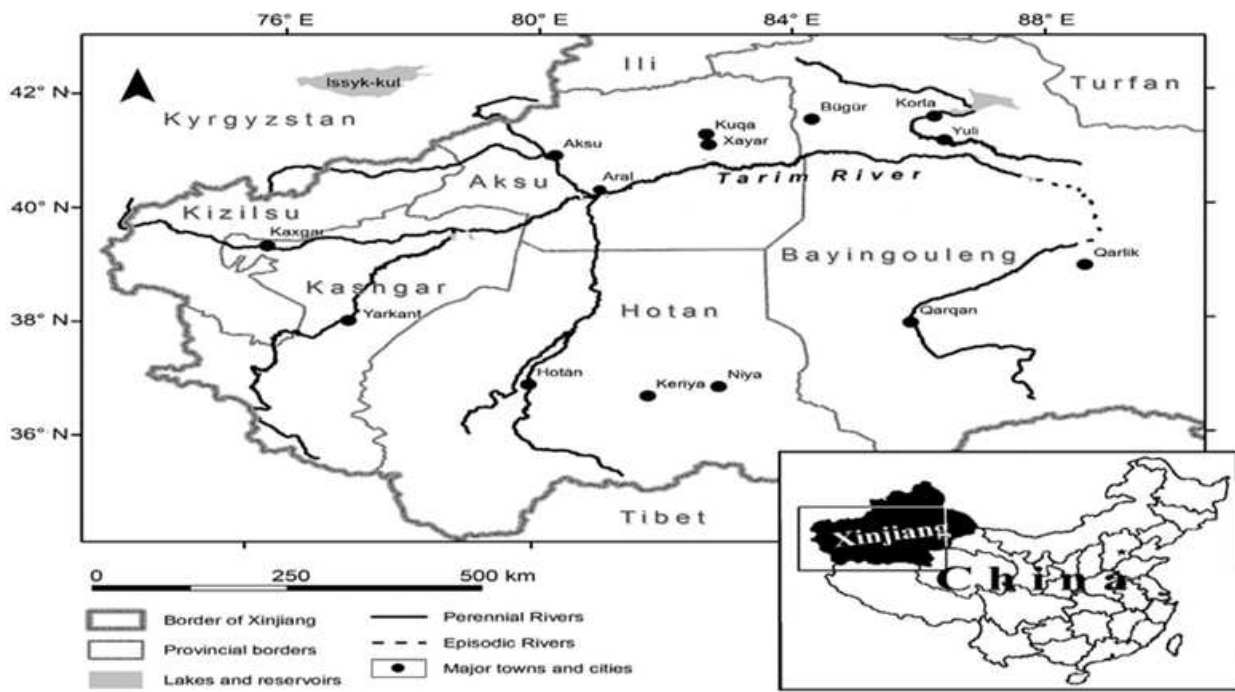


Figure 3

Location of Tarim River in northwest China

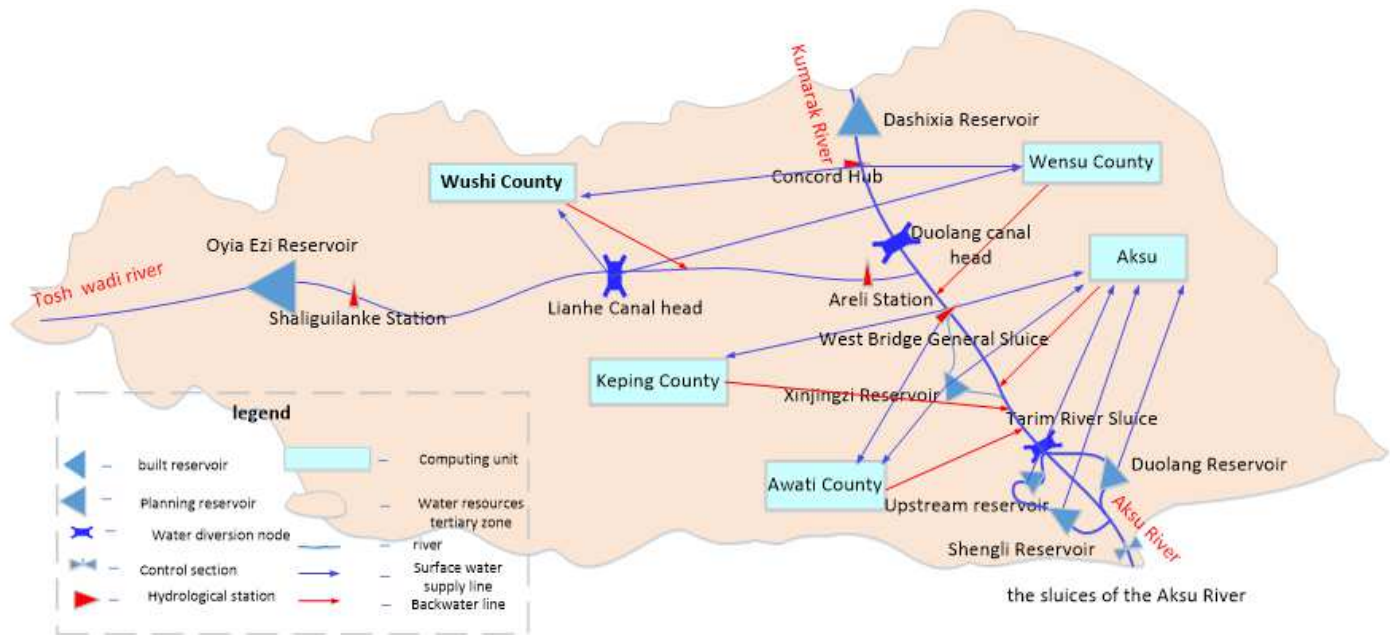


Figure 4

Water resource deployment network chart of Aksu basin

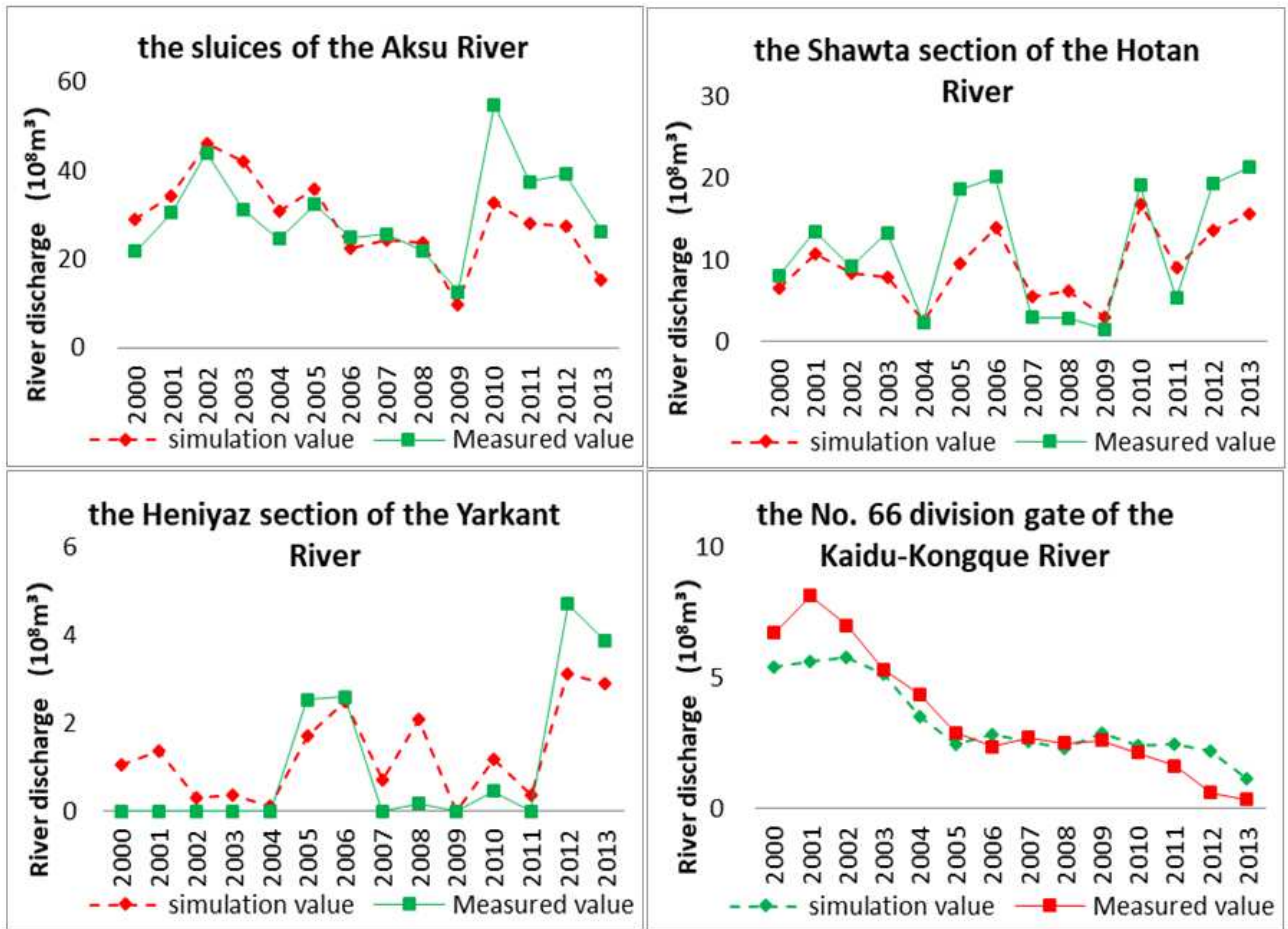


Figure 5

Fitting results of water discharge at control cross sections

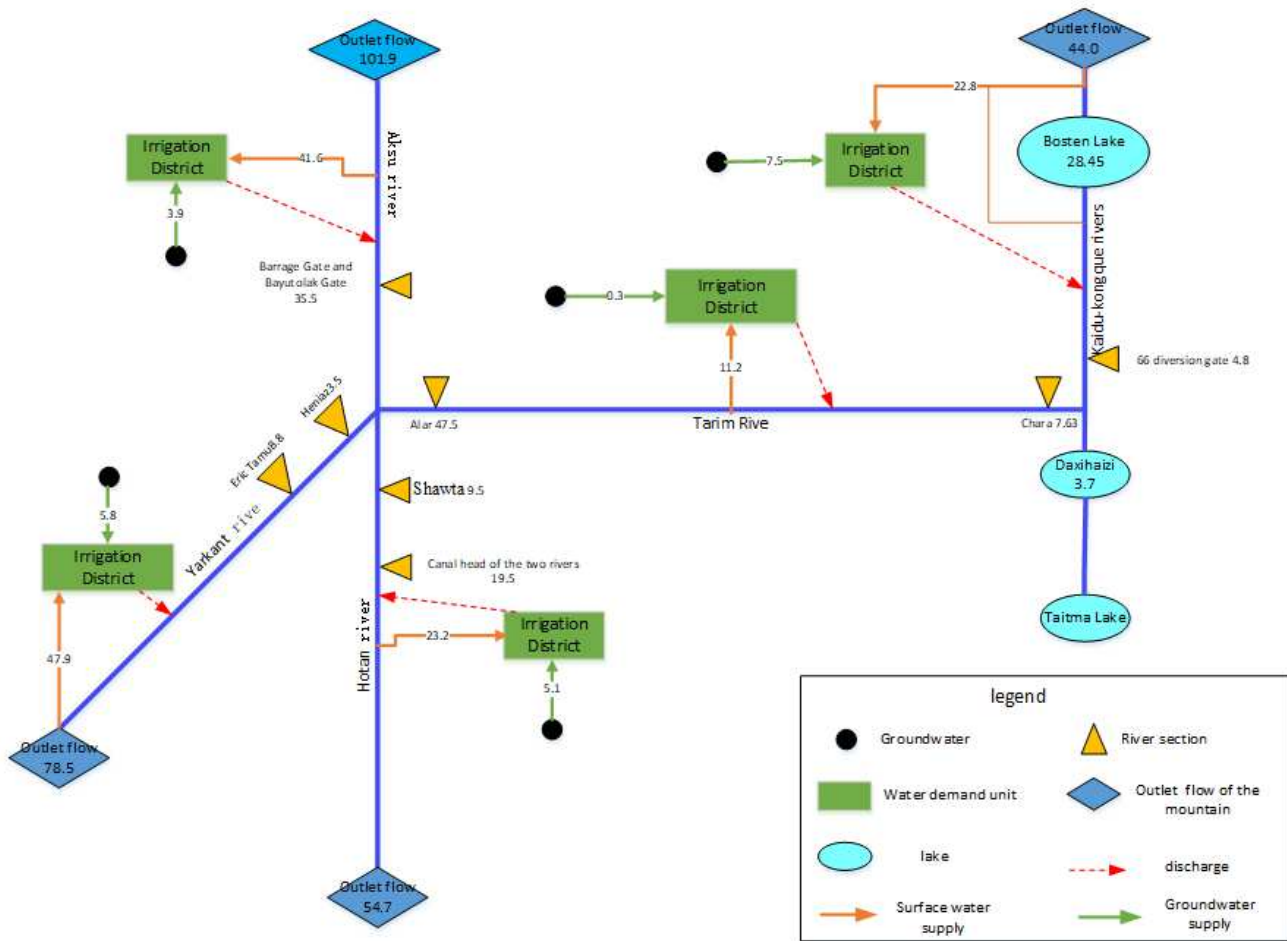


Figure 6

The balance of total water consumption control in 2030 (P=50%)

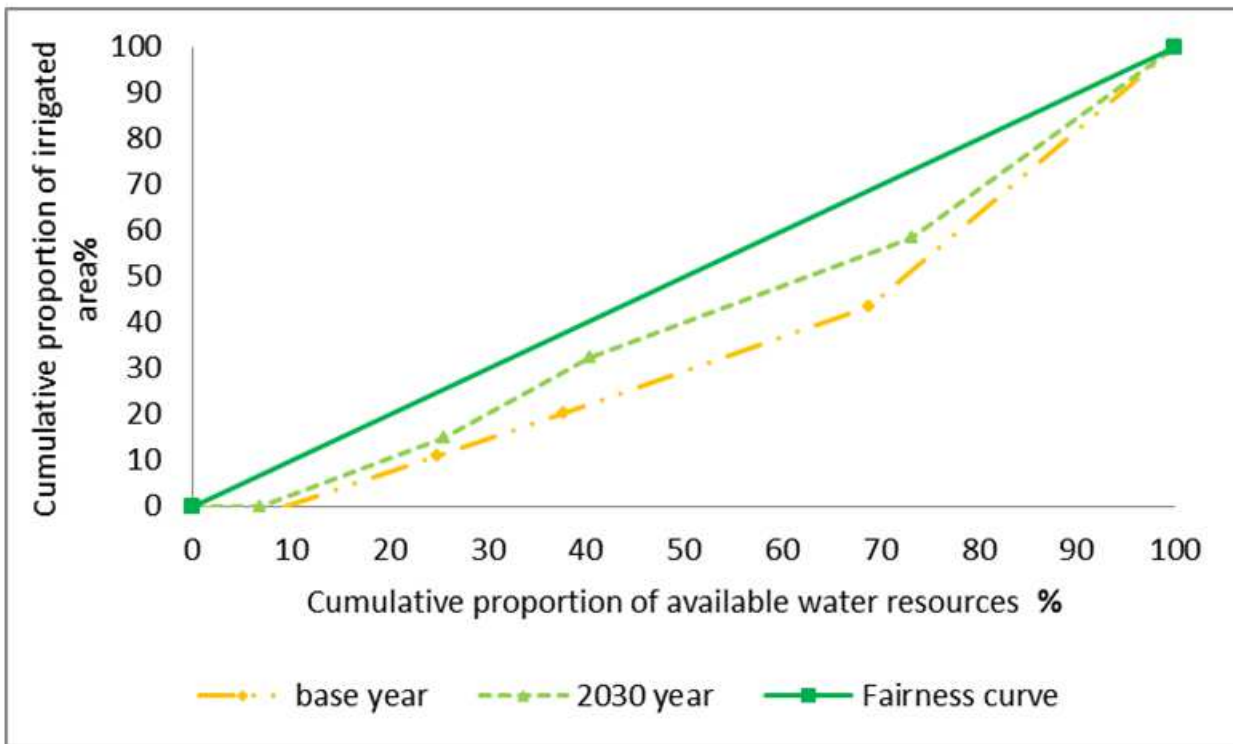


Figure 7

Lorenz Curve of Soil and Water Balance in Tarim River Basin

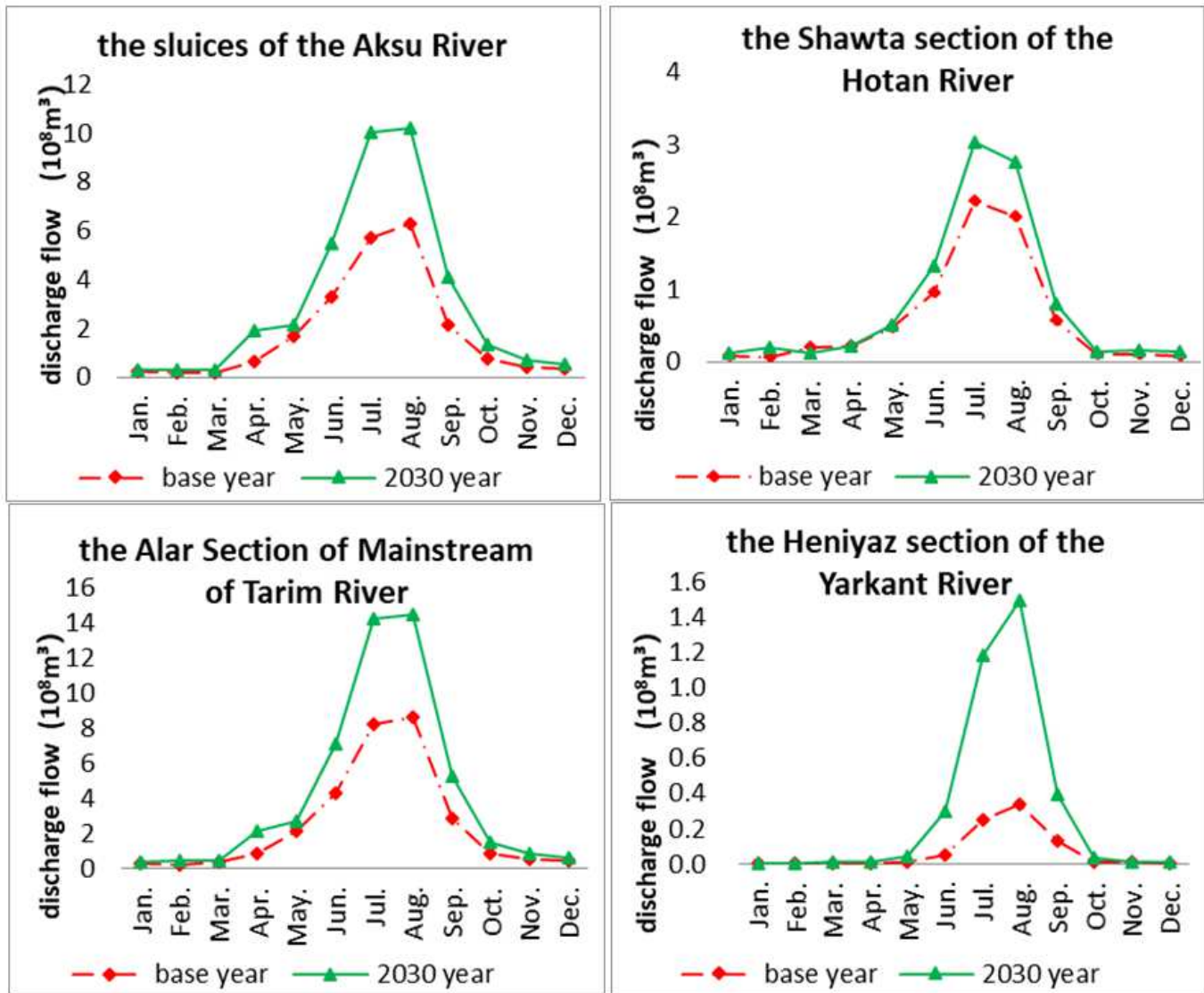


Figure 8

Process line of water discharge under key control sections (P=50%)

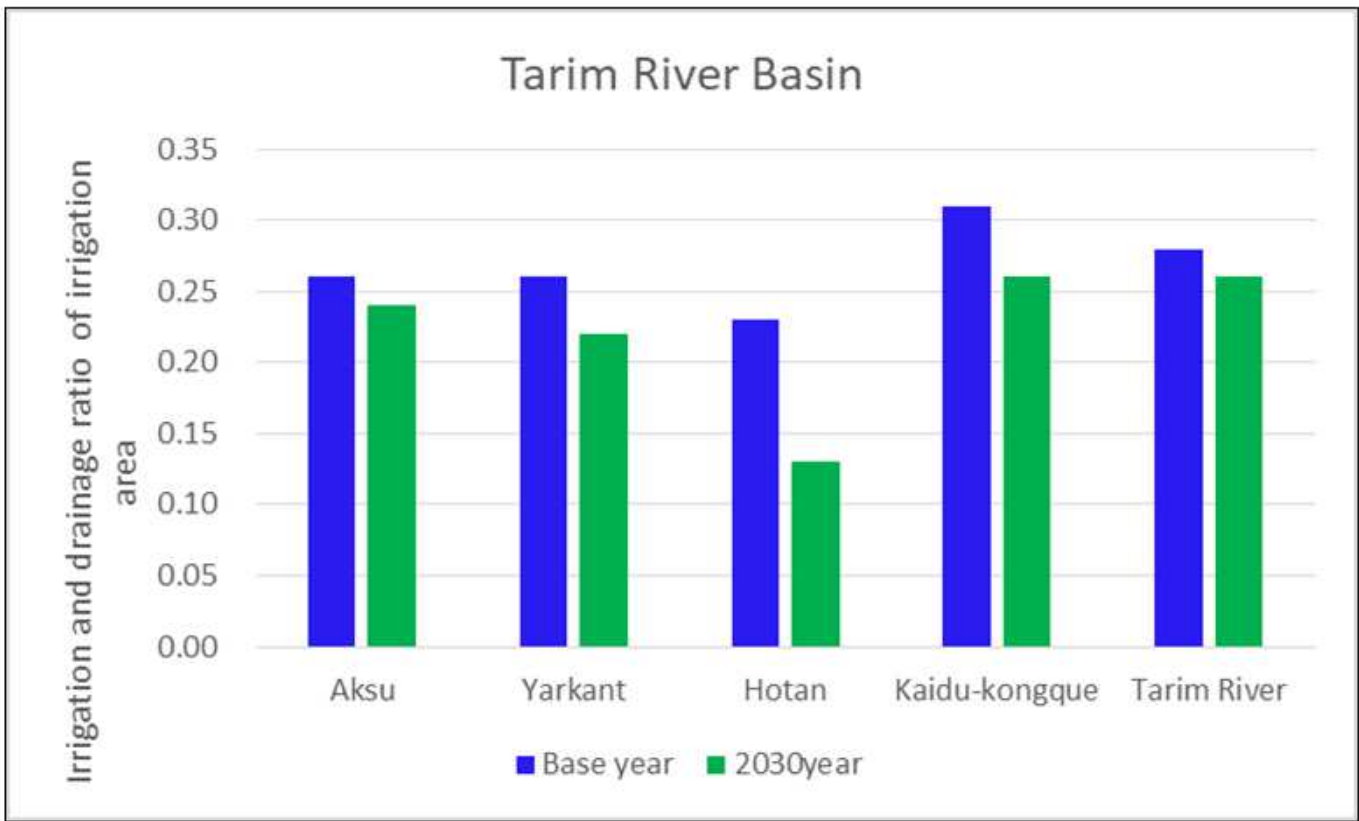


Figure 9

Irrigation and drainage ratio of irrigation area in Tarim River Basin