

The Preoperative Geriatric Nutritional Risk Index (GNRI) is an Independent Prognostic Factor in Patients Underwent Curative Resection for Colorectal Cancer.

Tamuro Hayama (✉ tamuro@med.teikyo-u.ac.jp)

Teikyo University School of Medicine

Yojiro Hashiguchi

Teikyo University School of Medicine

Tsuyoshi Ozawa

Teikyo University School of Medicine

Makoto Watanabe

Teikyo University School of Medicine

Yoshihisa Fukushima

Teikyo University School of Medicine

Ryu Shimada

Teikyo University School of Medicine

Keijiro Nozawa

Teikyo University School of Medicine

Keiji Matsuda

Teikyo University School of Medicine

Shoichi Fujii

Yokohama general hospital

Takeo Fukagawa

Teikyo University School of Medicine

Research Article

Keywords: colorectal cancer, GNRI, elder, clinical nutrition

Posted Date: August 5th, 2021

DOI: <https://doi.org/10.21203/rs.3.rs-763710/v1>

License: © ⓘ This work is licensed under a Creative Commons Attribution 4.0 International License.

[Read Full License](#)

Abstract

Purpose: The world is becoming longer-lived, and the number of elderly colorectal cancer patients is increasing. It is very important to identify simple and inexpensive postoperative predictors in elderly colorectal cancer patients. The geriatric nutritional risk index (GNRI) is a marker of systemic nutrition and is associated with poor survival in various kinds of cancers. A few reports have investigated recurrence factors using preoperative GNRI with CRC patients. This study aimed to investigate whether preoperative GNRI is associated with recurrence-free survival (RFS) and overall survival (OS) in elderly patients with CRC.

Methods: This study retrospectively enrolled 259 patients with Stage I–III CRC who were more than 65 years old and underwent curative surgery at a single institution in 2012–2017. We classified them into low GNRI (RFS: ≤ 90.5 , OS ≤ 101.1) group and high GNRI (RFS: > 90.5 , OS > 101.1) group.

Results: Multivariable analyses showed low GNRI group was an independent risk factor for 3-year RFS ($P = 0.006$) and OS ($P = 0.001$) in the patients with CRC. Kaplan-Meier analysis showed 3-year RFS and 3-year OS were significantly worse in the low GNRI group than in high GNRI group ($p = 0.001, 0.0037$).

Conclusion: A low-preoperative GNRI was significantly associated with a poor prognosis in elderly CRC patients.

Introduction

Life expectancy in humans is increasing. Expansion of the worldwide population and elevation of life expectancy have increased the number of elderly individuals [1].

When asked if an elderly CRC (colorectal cancer) patient wants treatment, most patients do. We know that increasing age also increases the risk for complications during and after colorectal surgery. Aging itself can reduce physiological recuperative power, aging is an independent risk factor for both in-hospital morbidity and mortality after colorectal surgery [2][3]. Recently, it has been widely accepted that GNRI (Geriatric Nutritional Risk Index) is strongly associated with mortality in elderly patients with various cancers [4–6]. However, as far as we know, there are few reports on the prognostic significance of GNRI in patients with colorectal cancer. This study investigated whether GNRI is a useful predictor of recurrence and long-term survival in elderly patients with colorectal cancer who have undergone curative resection.

Patients And Methods

Patient selection

Stage I–III CRC (colorectal cancer) diagnosed based on the 8th edition of the United States Joint Commission on Cancer (AJCC) [23] staging system and undergoing curative resection at Teikyo

University Hospital from 2012 to 2017. We enrolled 259 patients with Stage I–II CRC aged ≥ 65 years. This study has been approved by Teikyo University Ethics (Registration Number; 19–153).

Nutritional assessment by GNRI (Geriatric Nutritional Risk Index)

The GNRI was calculated that $[(14.89 \times \text{albumin (mg / dl)})] + [41.7 \times (\text{present / ideal body weight (kg)})]$. The present / ideal body weight value was set to 1 when the patient's body weight exceeded the ideal body weight [24]. The ideal body weight was defined as a body mass index of 22 kg / m^2 [24].

Other nutritional markers (Prognostic Nutritional Index: PNI, GPS, CONUT score)

PNI is a nutritional index proposed by Onodera et al [25]. And is calculated using serum albumin and total lymphocyte count. $\text{PNI} = 10 \times \text{Alb} + 0.005 \times \text{total lymphocyte count}$.

Initially, it was reported as a risk predictor of perioperative complications, later it was reported that evaluation of preoperative PNI was useful as a predictor of prognosis in cancer patients [26]. Glasgow Prognostic Score (GPS) was published by McMillan et al. In 2003. This is a classification using the nutritional index proposed for the first time in non-small cell lung cancer [27]. It was reported to be a better prognostic marker than classification based on stage and performance status. The CONUT score is used as a nutritional evaluation index calculated by scoring albumin level, total lymphocyte count, and total cholesterol level [28]. We have previously reported that CONUT score is useful as a predictor of prognosis after colorectal cancer surgery [23].

Survival follow-up

Surgical resection was defined as curative when there was no evidence of tumor recurrence and the distant metastases were histologically and macroscopically complete. Patients were followed up every 3 months for the first 3 years, every 6 months for the next 2 years. At each follow-up, all patients underwent physical examination and measurements of serum CEA (carcinoembryonic antigen) and CA19-9 (carbohydrate antigen 19 - 9). They also underwent colonoscopy 1–2 years after surgery (rectal cancer was every year after surgery). Thoraco-abdominal computed tomography scans were usually taken every 6 months. Recurrence was defined as the appearance of a radiological, clinical, and / or pathological diagnosis of cancer cells that were local or distant from their original location.

Determination of cut-off values

The cut-off value for the GNRI was defined according to the receiver-operating characteristic (ROC) curve analysis with Youden's index for the survival, and for BMI 22, for CEA (5 ng/ml) and CA19-9 (37 U/ml) were the upper limit of the normal range in our institute.

Statistical analysis

Differences in categorical variables were examined using a chi-square test or Fisher's exact test. RFS (Relapse-free survival) was calculated from the date of the patient underwent surgery to that of recurrence or death, overall survival (OS) was calculated from the date of the patient underwent surgery to that of death, using the Kaplan-Meier method. Univariate and multivariate analyses were performed using a Cox proportional hazards regression model for RFS and OS. Multivariate analyses were performed using the factors that were significant in univariate analyses. Clinical variables that were considered for univariate and multivariate analyses, in addition to the target GNRI, were previously identified confounding factors with an impact on the prognosis with CRC: sex, age at the diagnosis, histology, pathological T stage (T1/2 or T3/4), lymph-node metastasis (present or absent), BMI (≥ 22 or < 22), CEA levels (< 5.0 vs. ≥ 5.0 ng/mL), CA-19-9 levels (< 37 vs. ≥ 37 U/mL). Probability (p)-values ≤ 0.05 were considered significant. All statistical analyses were performed using JMP 15 software (SAS, Cary, NC, USA).

Results

Patient characteristics

Our study included a total of 259 patients. The median age was 74.2 (range, 65–93) years; 144 (55.6%) patients were male and 115 (44.4%) were female. T factor (the depth of tumor invasion) was 77 (29.7%) for T1 or T2, and 182 (70.3%) for T3 or T4. There were 87 (33.6%) cases with lymph node metastasis (N factor \boxtimes) and 172 (66.4%) cases without lymph node metastasis (N factor -). There were 89 (34.5%) cases with high preoperative CEA levels and 41 (15.9%) cases with high preoperative CA19-9 levels. The low GNRI group were 50 (19.5%) patients, high GNRI group were 209 (80.5%) (Table.1).

GNRI cut-off value

We performed ROC analyses to define the optimal cut-off value of the preoperative GNRI. ROC analyses for the 3-year RFS showed that 90.5 was the cut-off value of the GNRI that could discriminate CRC patients with recurrence from those without recurrence from those, with an area under the curve (AUC) of 0.62 (sensitivity: 0.36, specificity: 0.86 (Fig. 1A)). ROC analyses for the 3-year OS showed that 101.1 was the cut-off value of the GNRI that could discriminate CRC patients with a poor prognosis from those without a poor prognosis from those with AUC of 0.68 (sensitivity: 0.83, specificity: 0.50 (Fig. 1B)).

Associations of GNRI quality with clinicopathological factors

Correlation between GNRI and various clinicopathological factors includes gender, age, BMI, pT stage, pN stage, lymph / venous invasion, tumor location, pathological type, CEA levels and CA19-9 levels are included. GNRI was significantly correlated with pT stage ($p < 0.0001$), BMI ($p < 0.0001$), tumor location ($p = 0.017$) and CA19-9 ($p < 0.0001$) (Table 2).

ALB and %IBW (ideal body weight) scattergraphs by GNRI

For albumin, the preoperative blood albumin concentration is used. % IBW is calculated by current weight / ideal weight ($22 \times \text{height (m)}^2$) $\times 100$. The mean values of the low GNRI group were as follows. ALB: 4.0, %IBW: 106.2, and those of the high GNRI group were 3.1, 89.8 (Fig. 2). All items were significantly different between the two groups.

Survival Analysis of GNRI in Elderly CRC Patients

The total of 259 patients with a median follow-up of 1,214 days (interquartile range, 7–2,490 days) developed disease recurrence 43 (19.4%). Among the 43 patients with recurrence, liver metastases were observed in 14 (32.6%), lung metastases in 12 (27.9%), peritoneal carcinomatosis in 6 (14.0%), local recurrence in 4 (9.3%), para-aortic lymph nodes in 4 (9.3%), others in 6 (14.0%).

Univariate and multivariate analysis of predictive factors for 3-year RFS

All patients were categorized into the low GNRI group (< 90.54 ; $n = 51$, 19.8%) or high GNRI group (≥ 90.54 ; $n = 208$, 80.2%). We examined GNRI and clinicopathological factors in 3-year RFS. The GNRI, histological grade, lymph invasion, vascular invasion, pT category, pN category, preoperative CEA level, and CA19-9 level were significantly associated with poor RFS in the univariate survival analyses (Table 3). Other factors including age, gender, tumor location, BMI were not significantly associated with 3-year RFS. The multivariate analysis identified GNRI, pT category, pN category, preoperative CEA level as independent prognostic factors associated with 3-year RFS (Table 3).

Univariate and multivariate analysis of predictive factors for 3-year OS

We set 101.1 and cut off values using the ROC curve and youden index. The control group was divided into two groups using the cut off value. All patients were categorized into the low GNRI group (≤ 101.1 ; $n = 138$, 53.2%) or high GNRI group (> 101.1 ; $n = 121$, 46.8%). The results of the univariate and multivariate analyses for 3-year OS are summarized in Table 4. In the univariate analyses, histological grade, lymph invasion, pT category, pN category, preoperative CEA level, and GNRI were significantly associated with 3-year OS ($p = 0.004$, 0.0007 , 0.020 , 0.0007 , 0.013 , 0.005). In multivariate analyses for 3-year OS, histological grade, lymph invasion, preoperative CEA level and GNRI were independent predictive factors ($p = 0.006$, 0.025 , 0.009 , 0.012).

TNM Stage in low GNRI group and High GNRI group

There were 66 patients (25.4%) with stage I, 109 (42.1%) with stage II, and 84 (32.4%) with stage III cancer. As the stage progressed, the number of patients with low GNRI tended to be statistically significantly higher (RFS: $p = 0.0003$, OS: $p = 0.0004$) (Table 5).

Kaplan–Meier Curve of GNRI in Elderly

Survival analyses were performed between low GNRI group and high GNRI group according to cutoff value of GNRI. Statistically significant differences between the two groups were revealed by Kaplan-Meier

curves on both 3-year RFS ($P < 0.0001$) and 3-year OS ($P < 0.004$), indicating a potential prognostic value of GNRI. The 3-year RFS were 62.1% for the low GNRI group, 82.1% for the high GNRI group, respectively (Fig. 3A). Furthermore, according to the TNM staging stratification analysis, the patients with a low GNRI group were closely associated with poor prognosis stages I + II and III ($P = 0.0003$, $p = 0.046$; Fig. 3B, 3C). The TNM staging analysis was performed by adding Stage I and Stage II due to the small number of Stage I. The 3-year OS were 85.4% for the low GNRI group, 95.3% for the high GNRI group, respectively (Fig. 4A). In OS, the patients with a low GNRI group were closely associated with poor prognosis stages II stage II and III ($P = 0.040$, $p = 0.017$; Fig. 4B, 4C).

Comparison with other nutritional indicators using ROC curve

ROC analysis was performed using PNI, GPS, and CONIT scores, which are nutritional markers that have been reported to be associated with cancer recurrence, and AUC was calculated. As a result, AUC (area under the curve) had the highest GNRI with GNRI of 0.661, PNI of 0.621, GPS of 0.595, and CONUT of 0.643 (Fig. 5).

Discussion

Many studies have reported that nutrition-related factors and host immunity have a strong impact on the prognosis of cancer patients [7][8]. The GNRI was firstly reported that simple and accurate tool for predicting the risk of morbidity and mortality in hospitalized elderly patients [9]. The GNRI was strongly associated with mortality in elderly hospitalized patients and in patients with various cancers [10–13]. In our study, a survival analysis of stage I–III CRC patients who underwent curative surgery revealed that patients with low GNRI had significantly worse 3-year RFS than those with high GNRI. Similarly, in the 3-year OS, the prognosis was poor in the low GNRI group. The GNRI was also an independent risk factor for 3-year RFS and 3-year OS in multivariate analysis.

The underlying mechanism by which the low GNRI group results in poor prognosis among colorectal cancer patients undergoing curative surgery is unknown. Two factors can be inferred for the poor prognosis of the low GNRI group. The GNRI is composed of serum albumin levels and body weight (actual body weight [ABW] / IBW) and represents malnutrition.

First, cancer patients are prone to malnutrition, showing a reduced anabolic response to nutritional support. Anabolic resistance refers to the resistance to assimilation in which protein synthesis in muscle tissue does not occur normally after ingesting nutrients such as amino acids due to surgery, trauma, chronic debilitating diseases, aging, etc [14]. This also occurred in CRC patients, and it has been reported that a blunted reaction of muscle protein synthesis was observed in CRC patients after injection of the amino acid mixture [15]. Second, albumin synthesis may be suppressed in patients with CRC. There are GPS (Glasgow Prognostic Score) and PNI (prognostic nutritional index) in the score of nutritional evaluation using albumin. The GPS is a score using serum albumin level and CRP (C-reactive protein). It has been reported that when the serum albumin level is low, GPS becomes high and the prognosis was

poor in postoperative patients with CRC [16]. The PNI is a score calculated using lymphocyte count and serum albumin level. Tominaga et al reported a poor prognosis for patients with postoperative CRC with low preoperative PNI [17]. Thus, low serum albumin levels have been reported to have a poor prognosis.

The TNM stage has been widely used as the most applicable postoperative staging evaluation system for various cancers worldwide, and it plays an important guiding role in postoperative follow-up and treatment for CRC patients [18][19]. However, it is often reported that there is significant survival heterogeneity among CRC patients with the same TNM stage, and that the TNM stage is inadequate in individual prognosis prediction [20][21]. This may be because the TNM stage only classifies patients according to postoperative pathological results but does not include the patient's own nutritional status. In recent years, we have focused on the tumor environment from the tumor itself, especially the nutritional and inflammatory status of the patient [7, 21, 22]. By classifying colorectal cancer patients by stage and using GNRI, the ability to discriminate prognosis was improved. Therefore, we believe that GNRI can effectively complement the TNM stage and play an important role in assessing the individual prognosis of CRC patients.

This study has some limitations. First, this study was retrospective in design and included patients from a single institution. Overcoming potential biases in observational studies requires controlled randomized controlled trials comparing each GNRI risk group. Second, this study has undergone surgery for a variety of colorectal cancers and does not take into account differences between surgical procedures. Third, there is no consensus regarding the GNRI cut-off value, and this makes it difficult to use the GNRI in clinical settings. We selected the GNRI herein by using a ROC analysis. The GNRI is a non-specific marker of nutrition, which implies that another systemic disease can affect the GNRI. Our study findings need further review and validation in more CRC patients.

Conclusions

Our study provided novel evidence for the clinical relevance and potential feasibility of GNRI as a prognostic biomarker in CRC. Assessment of our developed GNRI could identify patients with elderly CRC who have a poor prognosis.

Declarations

Acknowledgments: We are grateful to Prof. Kazuaki Yokoyama and Dr. Kotaro Hama for his assistance in this study and supported by 20th Fujii Tomoko academic award and ACRO Research Grants of Teikyo University.

Funding: None

Conflicts of interest: There are no identifiable conflicts of interest to report.

Ethics approval: This study has been approved by Teikyo University committee (Registration Number; 19-153).

Consent to participate: A written informed consent was obtained from all individual participants included in the study.

Authors' contributions:

Study design: TH, MW, KN and SF

data collection, and analysis: TH, RS, YF, KM and TF

Drafting of manuscript: TH, TO, YH

Code availability: Not applicable.

Data Availability Statement: All data generated or analysed during this study are included in this article. Further enquiries can be directed to the corresponding author.

Human and animal rights: All procedures performed in this study involving human participants were in accordance with the 1964 Helsinki declaration and its latest amendments and comparable ethical standards. These authors do not perform a study with animals.

References

1. Cheng L, Eng C, Nieman LZ, Kapadia AS, Du XL. Trends in colorectal cancer incidence by anatomic site and disease stage in the United States from 1976 to 2005. *American journal of clinical oncology*. 2011;34(6):573-80.
2. Alley PG. Surgery for colorectal cancer in elderly patients. *Lancet (London, England)*. 2000;356(9234):956.
3. Itatani Y, Kawada K, Sakai Y. Treatment of Elderly Patients with Colorectal Cancer. *Biomed Res Int*. 2018;2018:2176056.
4. Hirahara N, Matsubara T, Fujii Y, Kaji S, Hyakudomi R, Yamamoto T, et al. Geriatric nutritional risk index as a prognostic marker of pTNM-stage I and II esophageal squamous cell carcinoma after curative resection. *Oncotarget*. 2020;11(29):2834-46.
5. Kushiyama S, Sakurai K, Kubo N, Tamamori Y, Nishii T, Tachimori A, et al. The Preoperative Geriatric Nutritional Risk Index Predicts Postoperative Complications in Elderly Patients with Gastric Cancer Undergoing Gastrectomy. *In Vivo*. 2018;32(6):1667-72.
6. Li Z, Guo Q, Wei J, Jin J, Wang J. Geriatric nutritional risk index is not an independent predictor in patients with diffuse large B-cell lymphoma. *Cancer Biomark*. 2018;21(4):813-20.

7. Hayama T, Ozawa T, Okada Y, Tsukamoto M, Fukushima Y, Shimada R, et al. The pretreatment Controlling Nutritional Status (CONUT) score is an independent prognostic factor in patients undergoing resection for colorectal cancer. *Sci Rep.* 2020;10(1):13239.
8. Sato R, Oikawa M, Kakita T, Okada T, Abe T, Yazawa T, et al. Preoperative change of modified Glasgow prognostic score after stenting predicts the long-term outcomes of obstructive colorectal cancer. *Surg Today.* 2020;50(3):232-9.
9. Bouillanne O, Morineau G, Dupont C, Coulombel I, Vincent JP, Nicolis I, et al. Geriatric Nutritional Risk Index: a new index for evaluating at-risk elderly medical patients. *Am J Clin Nutr.* 2005;82(4):777-83.
10. Lee GW, Go SI, Kim DW, Kim HG, Kim JH, An HJ, et al. Geriatric Nutritional Risk Index as a prognostic marker in patients with extensive-stage disease small cell lung cancer: Results from a randomized controlled trial. *Thorac Cancer.* 2020;11(1):62-71.
11. Li L, Wang H, Yang J, Jiang L, Yang J, Wu H, et al. Geriatric nutritional risk index predicts prognosis after hepatectomy in elderly patients with hepatitis B virus-related hepatocellular carcinoma. *Sci Rep.* 2018;8(1):12561.
12. Nakayama M, Goshō M, Adachi M, Ii R, Matsumoto S, Miyamoto H, et al. The Geriatric Nutritional Risk Index as a Prognostic Factor in Patients with Advanced Head and Neck Cancer. *Laryngoscope.* 2021;131(1):E151-e6.
13. Sasaki M, Miyoshi N, Fujino S, Ogino T, Takahashi H, Uemura M, et al. The Geriatric Nutritional Risk Index predicts postoperative complications and prognosis in elderly patients with colorectal cancer after curative surgery. *Sci Rep.* 2020;10(1):10744.
14. Biolo G, Cederholm T, Muscaritoli M. Muscle contractile and metabolic dysfunction is a common feature of sarcopenia of aging and chronic diseases: from sarcopenic obesity to cachexia. *Clin Nutr.* 2014;33(5):737-48.
15. Williams JP, Phillips BE, Smith K, Atherton PJ, Rankin D, Selby AL, et al. Effect of tumor burden and subsequent surgical resection on skeletal muscle mass and protein turnover in colorectal cancer patients. *Am J Clin Nutr.* 2012;96(5):1064-70.
16. Okugawa Y, Shirai Y, Toiyama Y, Saigusa S, Hishida A, Yokoe T, et al. Clinical Burden of Modified Glasgow Prognostic Scale in Colorectal Cancer. *Anticancer Res.* 2018;38(3):1599-610.
17. Tominaga T, Nonaka T, Hisanaga M, Fukuda A, Tanoue Y, Yoshimoto T, et al. Prognostic value of the preoperative prognostic nutritional index in oldest-old patients with colorectal cancer. *Surg Today.* 2020;50(5):449-59.
18. Sano T, Coit DG, Kim HH, Roviello F, Kassab P, Wittekind C, et al. Proposal of a new stage grouping of gastric cancer for TNM classification: International Gastric Cancer Association staging project. *Gastric*

Cancer. 2017;20(2):217-25.

19. Cserni G, Chmielik E, Cserni B, Tot T. The new TNM-based staging of breast cancer. *Virchows Arch.* 2018;472(5):697-703.
20. Li J, Guo BC, Sun LR, Wang JW, Fu XH, Zhang SZ, et al. TNM staging of colorectal cancer should be reconsidered by T stage weighting. *World J Gastroenterol.* 2014;20(17):5104-12.
21. Hayama T, Ozawa T, Asako K, Kondo R, Ono K, Okada Y, et al. Impact of Colon Cancer Location on the Prognostic Significance of Nutritional Indexes and Inflammatory Markers. *In Vivo.* 2021;35(2):1261-9.
22. Hayama T, Hashiguchi Y, Okada Y, Ono K, Nemoto K, Shimada R, et al. Significance of the 7th postoperative day neutrophil-to-lymphocyte ratio in colorectal cancer. *Int J Colorectal Dis.* 2020;35(1):119-24.
23. Weiser MR. AJCC 8th Edition: Colorectal Cancer. *Annals of surgical oncology.* 2018;25(6):1454-5.
24. Yamada K, Furuya R, Takita T, Maruyama Y, Yamaguchi Y, Ohkawa S, et al. Simplified nutritional screening tools for patients on maintenance hemodialysis. *The American journal of clinical nutrition.* 2008;87(1):106-13.
25. Onodera T, Goseki N, Kosaki G. [Prognostic nutritional index in gastrointestinal surgery of malnourished cancer patients]. *Nihon Geka Gakkai Zasshi.* 1984;85(9):1001-5.
26. Mohri Y, Inoue Y, Tanaka K, Hiro J, Uchida K, Kusunoki M. Prognostic nutritional index predicts postoperative outcome in colorectal cancer. *World J Surg.* 2013;37(11):2688-92.
27. Forrest LM, McMillan DC, McArdle CS, Angerson WJ, Dunlop DJ. Evaluation of cumulative prognostic scores based on the systemic inflammatory response in patients with inoperable non-small-cell lung cancer. *Br J Cancer.* 2003;89(6):1028-30.
28. Ignacio de Ulíbarri J, González-Madroño A, de Villar NG, González P, González B, Mancha A, et al. CONUT: a tool for controlling nutritional status. First validation in a hospital population. *Nutr Hosp.* 2005;20(1):38-45.

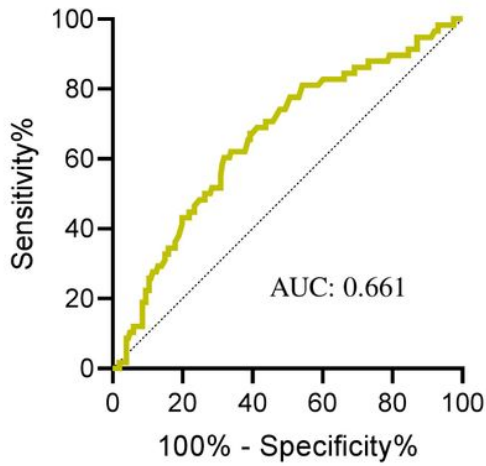
Tables

Due to technical limitations, table 1-5 is only available as a download in the Supplemental Files section.

Figures

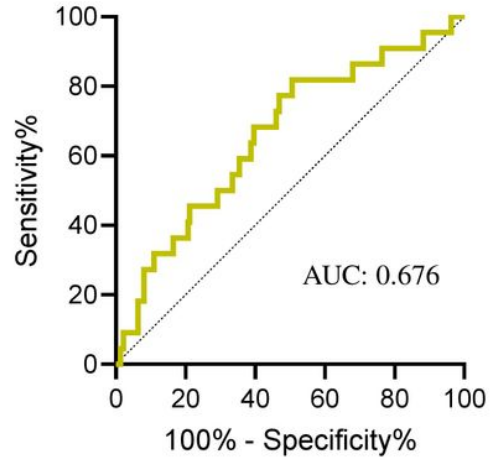
Fig.1

A.



Cut-off: 90.54
Sensitivity: 0.362
Specificity: 0.856

B.



Cut-off: 101.1
Sensitivity: 0.826
Specificity: 0.496

Figure 1

ROC for GNRI as a predictive factor for postoperative survival was plotted to verify the optimum cutoff value of GNRI. (A) relapse-free survival, (B) overall survival.

Fig.2

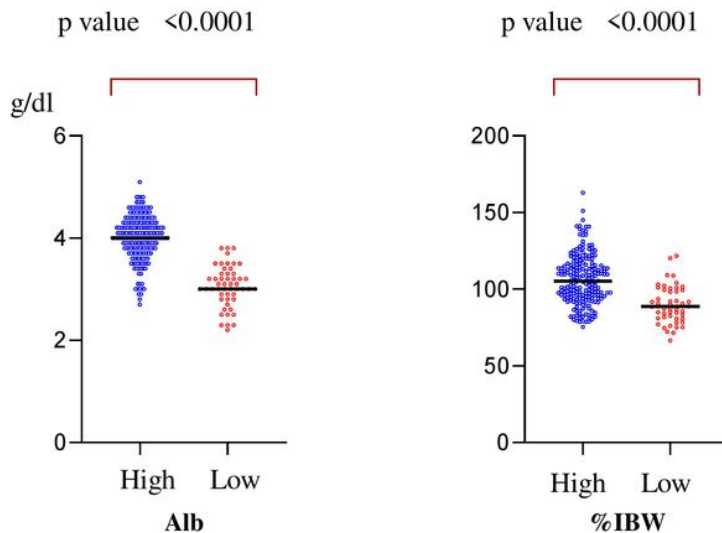


Figure 2

ALB and %IBW scatter graphs by GNRI.

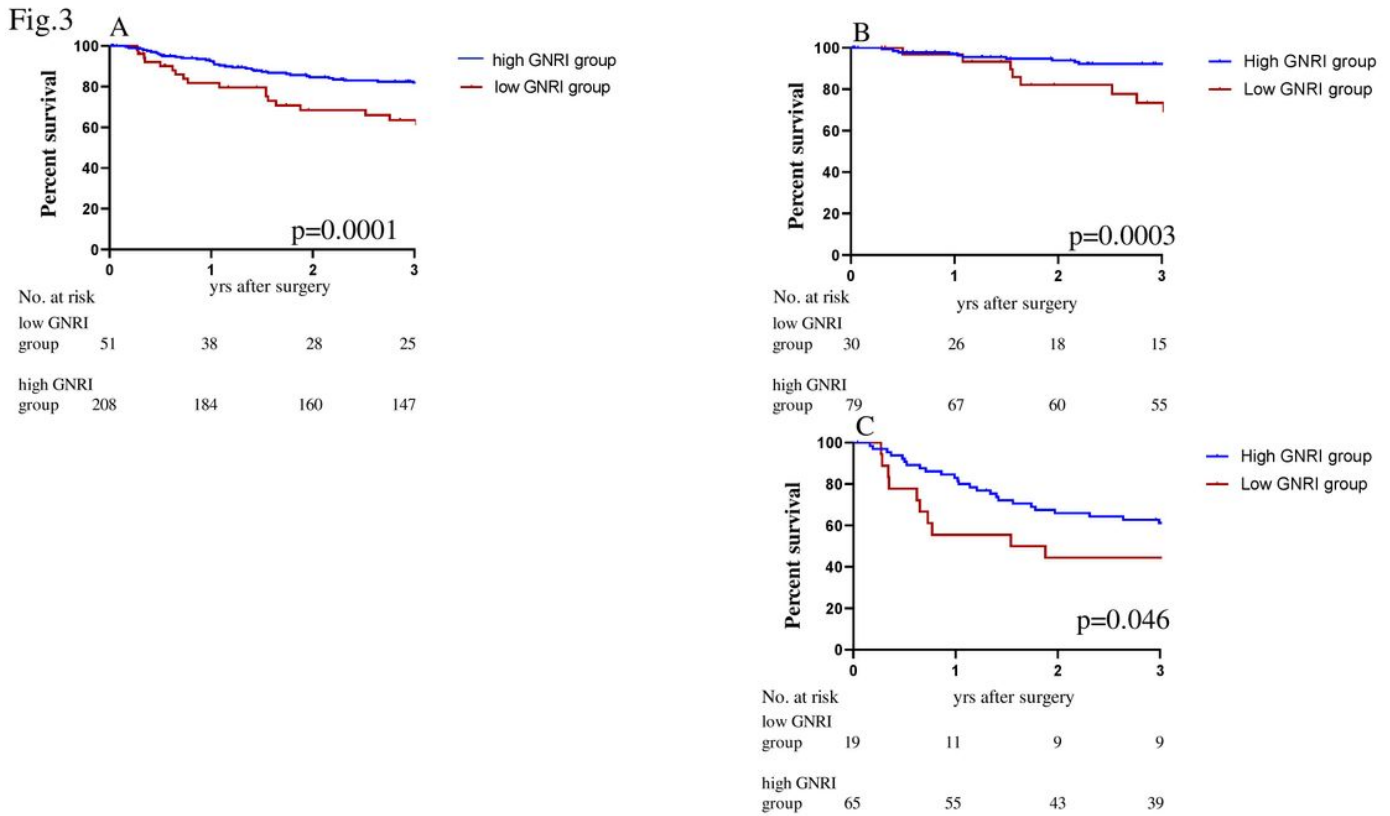


Figure 3

Kaplan-Meier analysis for the RFS of colorectal cancer patients in all stages according to GNRI (A) and stratification analysis based on TNM stage: stage I, stage II (B) and stage III (C).

Fig.4

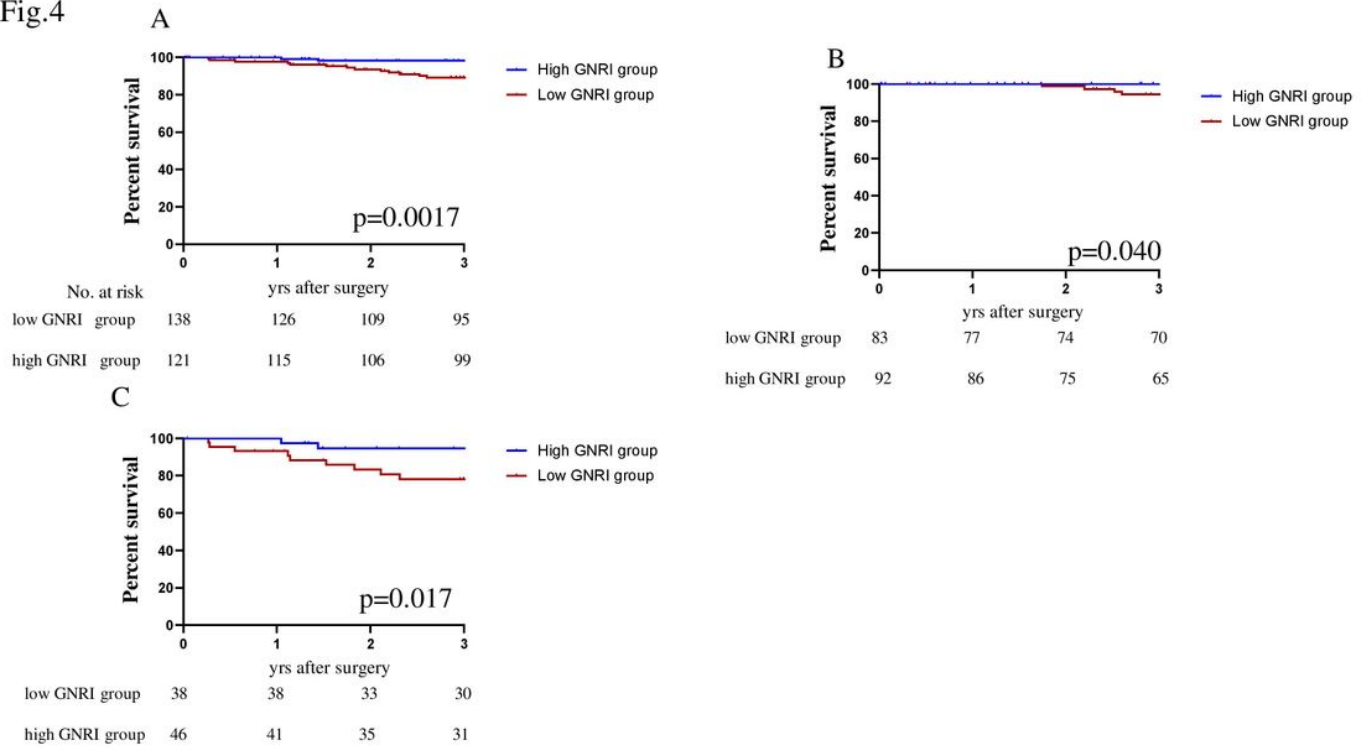


Figure 4

Kaplan-Meier analysis for the OS of colorectal cancer patients in all stages according to GNRI (A) and stratification analysis based on TNM stage: stage I, stage II (B) and stage III (C).

Fig.5

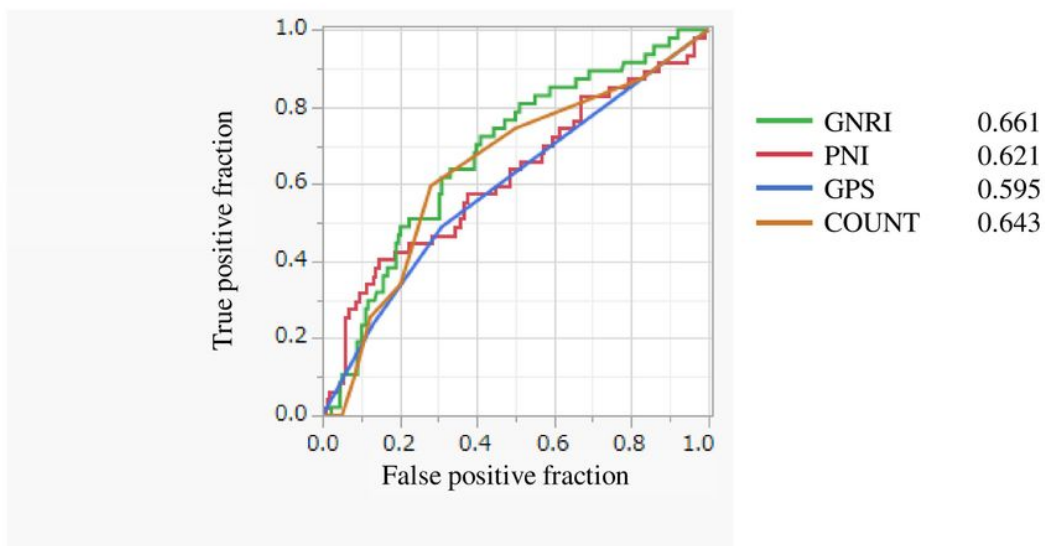


Figure 5

Comparison of ROC curves using nutritional markers

Supplementary Files

This is a list of supplementary files associated with this preprint. Click to download.

- [Table1.pdf](#)
- [Table2.pdf](#)
- [Table3.pdf](#)
- [Table4.pdf](#)
- [Table5.pdf](#)