

Table S1

Name	Longitude	Latitude	Elevation	Climatic zone	Country	Seed coat color
Mg_Pop1	-4.290194	11.170056	458	Southern-Sudanian	Burkina Faso	White
Mg_Pop1	0.550003	10.75	177	Southern-Sudanian	Togo	Black
Mg_Pop1	1.109833	10.348472	220	Southern-Sudanian	Benin	White
Mg_Pop1	1.680889	7.58325	217	Southern-Sudanian	Benin	White
Mg_Pop1	1.750722	7.410389	154	Southern-Sudanian	Benin	White
Mg_Pop1	1.837111	7.329389	143	Southern-Sudanian	Benin	White
Mg_Pop1	1.965944	7.137222	196	Northern-Guinean	Benin	White
Mg_Pop1	2.025917	7.229639	231	Southern-Sudanian	Benin	White
Mg_Pop1	2.076556	7.085111	86	Northern-Guinean	Benin	White
Mg_Pop1	2.130944	7.23375	167	Northern-Guinean	Benin	White
Mg_Pop1	2.145611	7.708778	114	Southern-Sudanian	Benin	White
Mg_Pop1	2.160333	8.443806	263	Southern-Sudanian	Benin	White
Mg_Pop1	2.226472	8.262278	216	Southern-Sudanian	Benin	White
Mg_Pop1	2.23875	7.223028	49	Northern-Guinean	Benin	Black
Mg_Pop1	2.293722	7.988083	183	Southern-Sudanian	Benin	White
Mg_Pop1	2.324	7.355611	136	Northern-Guinean	Benin	White
Mg_Pop1	2.393528	7.640861	102	Southern-Sudanian	Benin	White
Mg_Pop1	2.420806	7.762278	124	Southern-Sudanian	Benin	White
Mg_Pop1	2.434056	7.475667	58	Northern-Guinean	Benin	White
Mg_Pop1	2.616639	8.165944	245	Southern-Sudanian	Benin	White
Mg_Pop1	2.623278	8.040694	176	Southern-Sudanian	Benin	White
Mg_Pop1	2.710528	8.158222	160	Southern-Sudanian	Benin	White
Mg_Pop2	1.05	9.933336	280	Southern-Sudanian	Togo	Black
Mg_Pop2	1.052083	10.106861	208	Southern-Sudanian	Togo	Black
Mg_Pop2	-4.923861	11.100975	545	Southern-Sudanian	Burkina Faso	White_black_eye
Mg_Pop2	-4.840056	11.981056	320	Southern-Sudanian	Burkina Faso	White_black_eye
Mg_Pop2	-4.77525	11.614667	352	Southern-Sudanian	Burkina Faso	Black
Mg_Pop2	-4.735167	11.939139	334	Southern-Sudanian	Burkina Faso	White_black_eye
Mg_Pop2	-4.513083	10.981167	541	Southern-Sudanian	Burkina Faso	White_black_eye
Mg_Pop2	-4.430167	11.133083	379	Southern-Sudanian	Burkina Faso	Black
Mg_Pop2	-4.290194	11.170056	458	Southern-Sudanian	Burkina Faso	Black
Mg_Pop2	-3.708778	11.963278	363	Northern-Sudanian	Burkina Faso	Black
Mg_Pop2	-3.680083	12.188222	279	Northern-Sudanian	Burkina Faso	Black
Mg_Pop2	-3.674444	12.071278	327	Northern-Sudanian	Burkina Faso	Black
Mg_Pop2	-3.583222	12.192528	308	Northern-Sudanian	Burkina Faso	White_black_eye
Mg_Pop2	-2.700083	10.532444	307	Southern-Sudanian	Ghana	Brown_greyed_orange_eye
Mg_Pop2	-2.665111	10.646	292	Southern-Sudanian	Ghana	Brown_greyed_orange_eye
Mg_Pop2	-2.594278	10.487778	285	Southern-Sudanian	Ghana	Brown_greyed_orange_eye
Mg_Pop2	-2.258972	10.566222	238	Southern-Sudanian	Ghana	Brown_greyed_orange_eye
Mg_Pop2	1.078639	10.137778	231	Southern-Sudanian	Togo	Black
Mg_Pop2	1.206889	10.185722	564	Southern-Sudanian	Benin	Red
Mg_Pop2	1.471444	10.094389	374	Southern-Sudanian	Benin	White_black_eye
Mg_Pop2	1.965944	7.137222	196	Northern-Guinean	Benin	Black
Mg_Pop2	2.025333	7.229444	243	Southern-Sudanian	Benin	Red
Mg_Pop2	2.178306	7.257	150	Northern-Guinean	Benin	Red
Mg_Pop2	2.279611	7.205639	41	Northern-Guinean	Benin	Red
Mg_Pop2	2.660333	8.10975	204	Southern-Sudanian	Benin	White
Mg_GBIF	-2.66667	10.83333	282	Southern-Sudanian	Ghana	
Mg_GBIF	-2.66242	10.36713	273	Southern-Sudanian	Ghana	
Mg_GBIF	-2.5387	10.46414	324	Southern-Sudanian	Ghana	
Mg_GBIF	-2.43029	9.24525	325	Southern-Sudanian	Ghana	
Mg_GBIF	-1.91667	9.16667	226	Southern-Sudanian	Ghana	
Mg_GBIF	-1.46667	10.41667	190	Southern-Sudanian	Ghana	
Mg_GBIF	0.2	10.55	176	Northern-Sudanian	Togo	
Mg_GBIF	0.3	10.73333	329	Northern-Sudanian	Togo	
Mg_GBIF	0.58333	10.75	149	Northern-Sudanian	Togo	
Mg_GBIF	1.1	9.8	480	Southern-Sudanian	Togo	
Mg_GBIF	1.28333	7.8	176	Northern-Guinea	Togo	
Mg_GBIF	1.33333	9.75	410	Southern-Sudanian	Togo	
Mg_GBIF	1.9333	7.3333	159	Northern-Guinea	Benin	
Mg_GBIF	1.94	7.42333	151	Northern-Guinea	Benin	
Mg_GBIF	2.3	7.9833	196	Southern-Sudanian	Benin	
Mg_GBIF	2.35	6.45	18	Northern-Guinea	Benin	
Mg_GBIF	-2.546625	10.015748	323	Southern-Sudanian	Ghana	

Supplementary figures

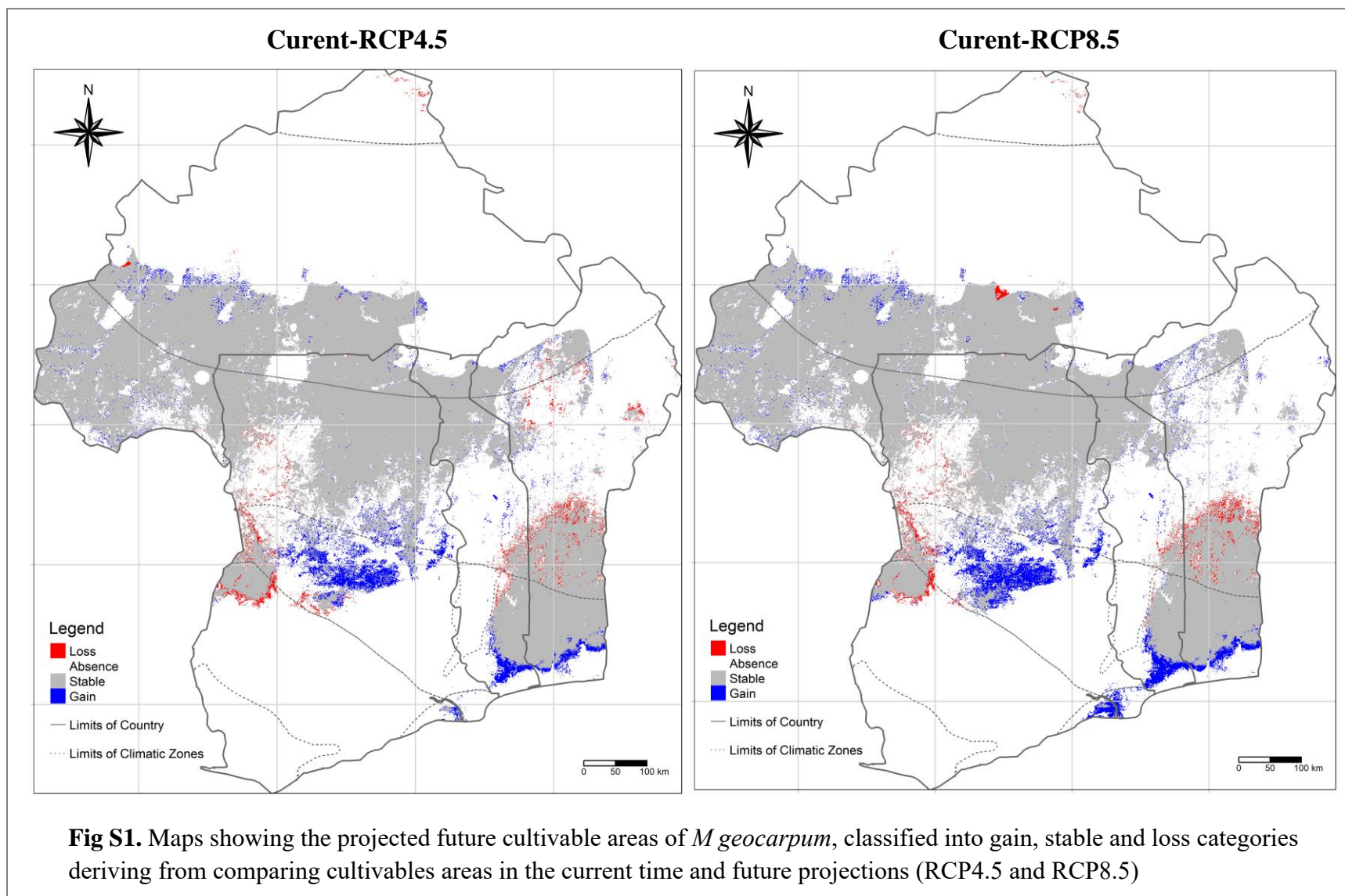
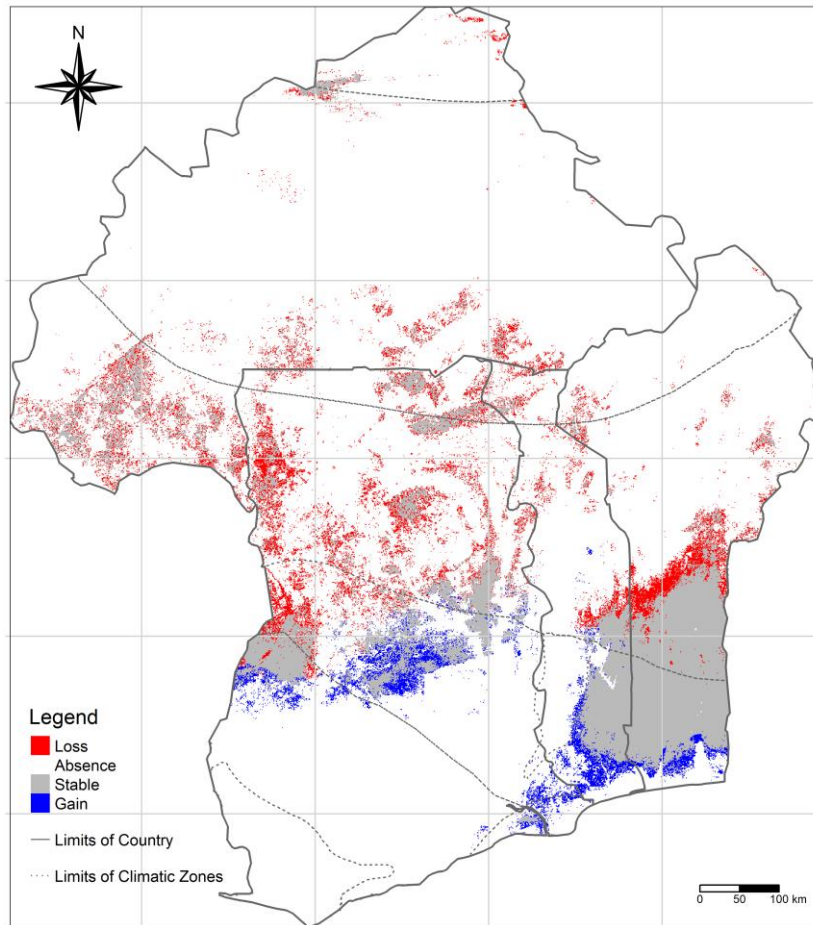


Fig S1. Maps showing the projected future cultivable areas of *M. geocarpum*, classified into gain, stable and loss categories deriving from comparing cultivables areas in the current time and future projections (RCP4.5 and RCP8.5)

Curent-RCP4.5



Curent-RCP8.5

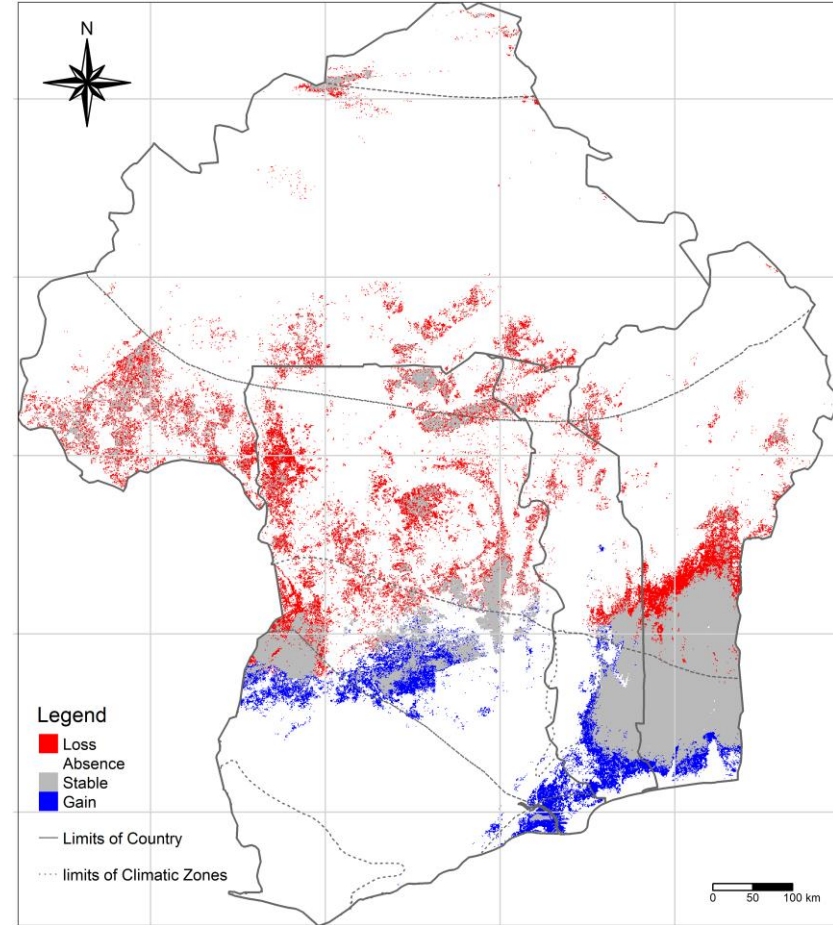
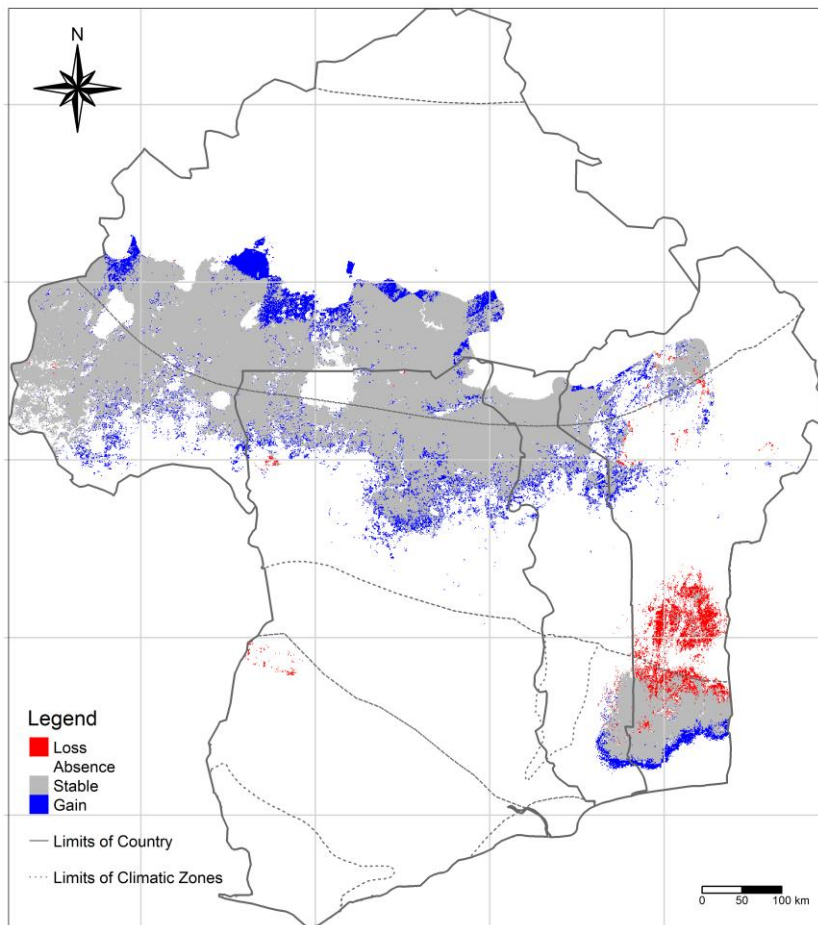


Fig S2. Maps showing the projected future cultivable areas of Genetic Population 1, classified into gain, stable and loss categories deriving from comparing cultivables areas in the current time and future projections (RCP4.5 and RCP8.5)

Curent-RCP4.5



Curent-RCP8.5

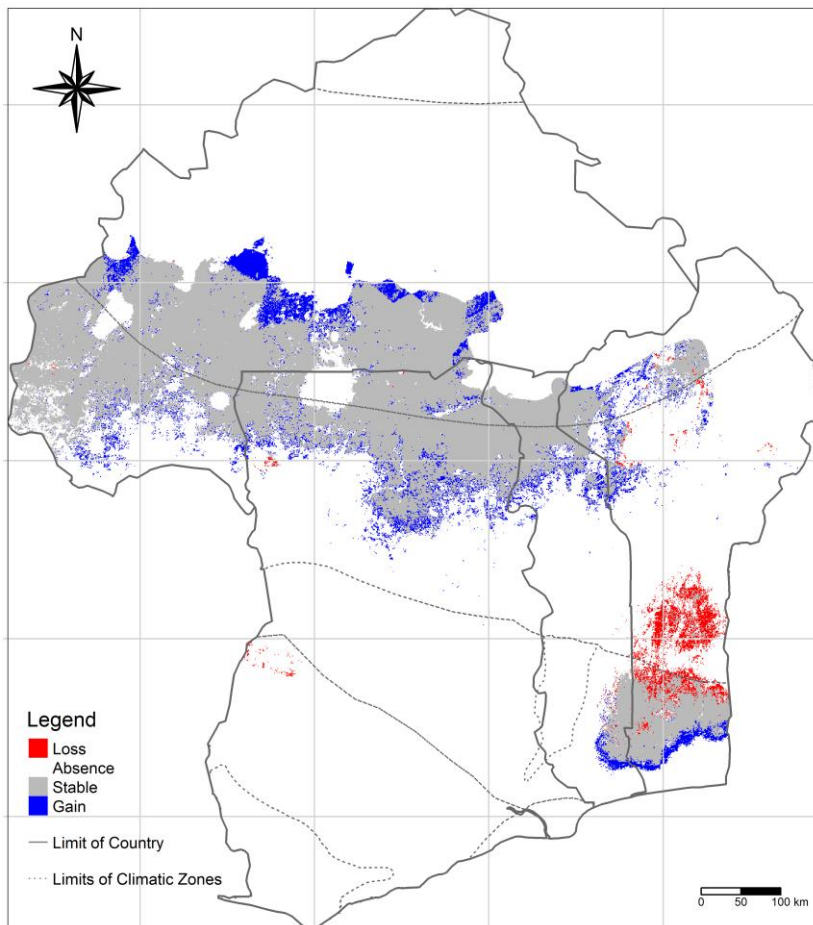


Fig S3. Maps showing the projected future cultivable areas of Genetic Population 2, classified into gain, stable and loss categories deriving from comparing cultivables areas in the current time and future projections (RCP4.5 and RCP8.5)