

## Supplementary Information

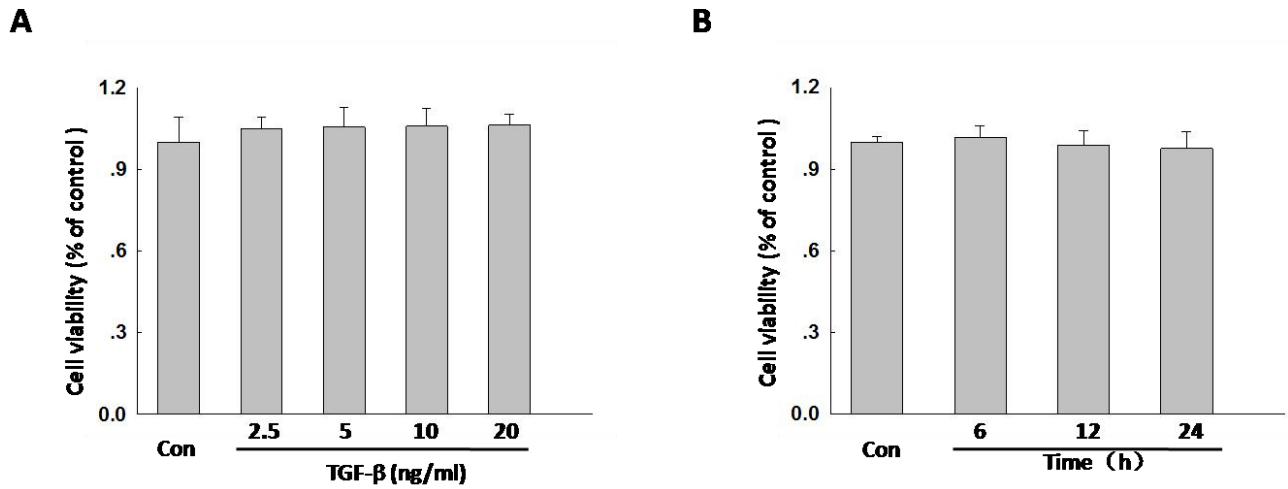
Manuscript title: TGF- $\beta$ -induced CCR8 promoted macrophage transdifferentiation into myofibroblast-like cells

Authors: Liu, Guan, Zhao, Li

### Table of Contents

Supplementary Figure S1	2
Supplementary Figure S2	3
Supplementary Figure S3	4

Supplementary Figure S1

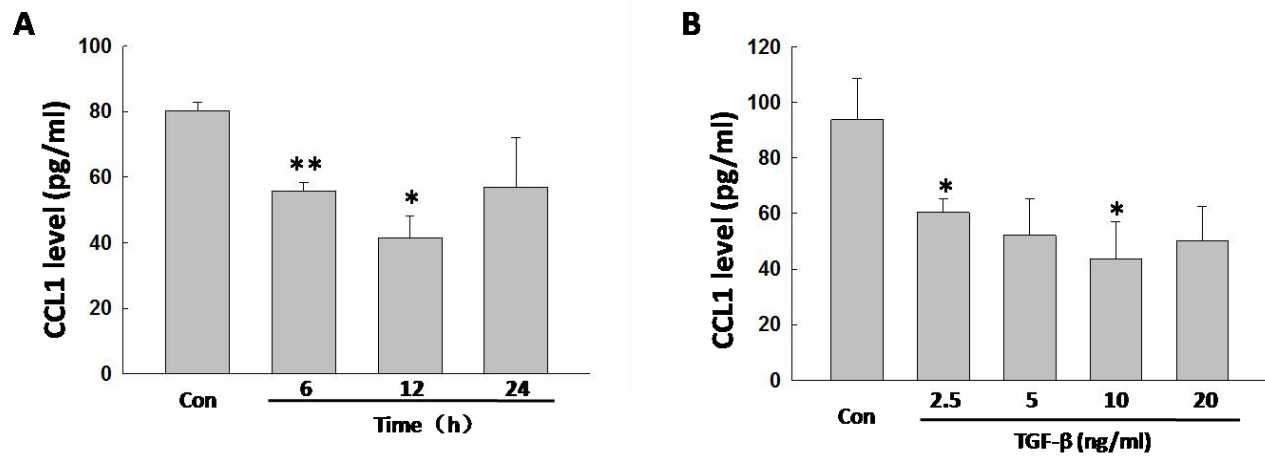


**Fig. S1** Effects of TGF- $\beta$  on MH-S cell viability.

(A and B) CCK8 assay results showing that the effects of TGF- $\beta$  on the cell viability in MH-S cells.

The results indicated that both different doses of TGF- $\beta$  and different time points of TGF- $\beta$  treatment had no distinct effect on cell viability. Data are representative of at least 3 independent experiments.

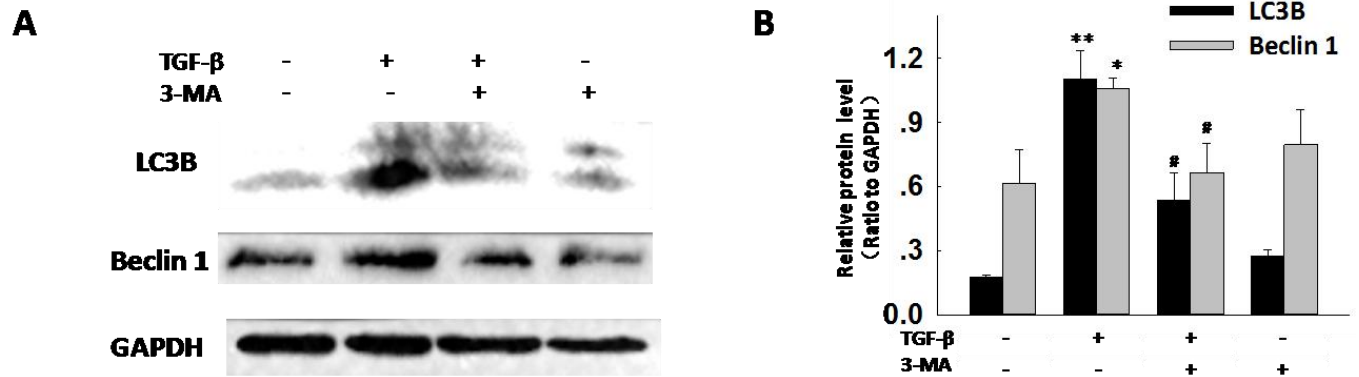
Supplementary Figure S2



**Fig. S2** Effects of TGF- $\beta$  on the levels of macrophage-derived CCL1

(A and B) ELISAs suggested that TGF- $\beta$  significantly decreased the CCL1 expression in a dose-dependent manner (A) and a time-dependent manner (B) in MH-S cells. Data are presented as the mean  $\pm$  S.E.M. (n=5); \*P<0.05 versus the control group (Student's t-test).

Supplementary Figure S3



**Fig. S3** Effects of 3-MA on the levels of autophagic proteins

(A and B) Representative Western blot and densitometric analyses showing that 1 mM 3-MA significantly inhibited the expression of LC3B and Beclin 1. Data are presented as the mean  $\pm$  S.E.M (n =3); \*p < 0.05; \*\*P<0.01 vs the control group; #p < 0.05 vs the TGF- $\beta$  group. (one-way ANOVA).