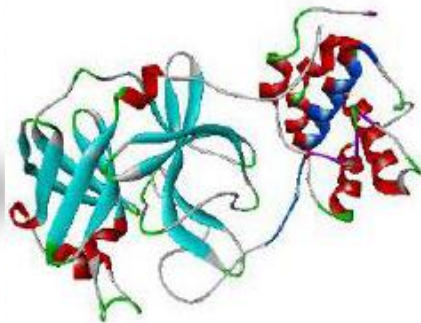
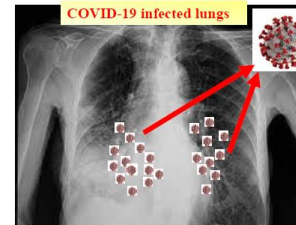


SARS-CoV-2



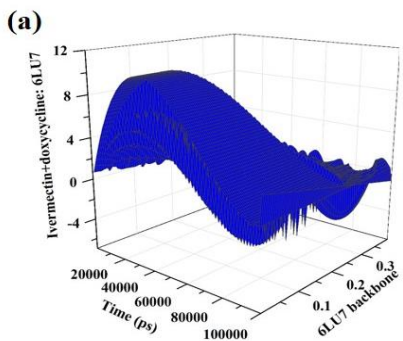
3CLpro protein



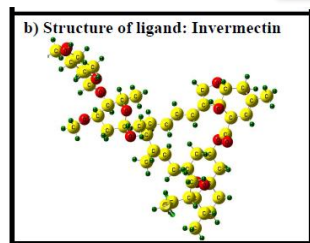
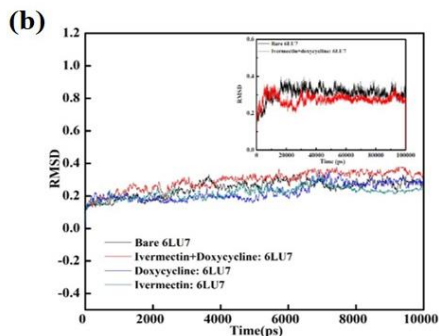
Damaged lungs due to SARS COVID-19

Drugs

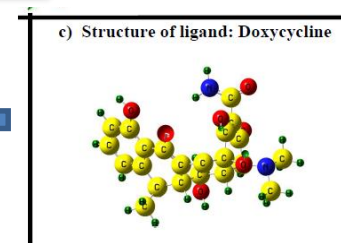
RMSD 3D view



RMSD 2D view

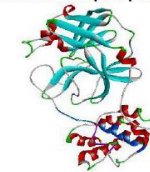


Ivermectin

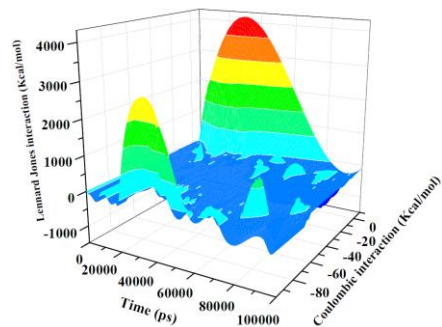


Doxycycline

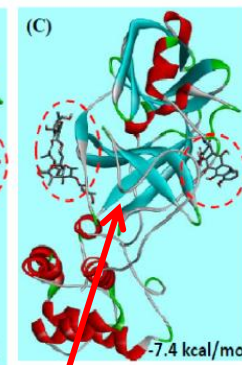
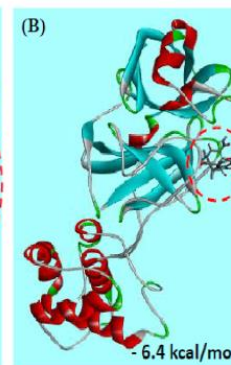
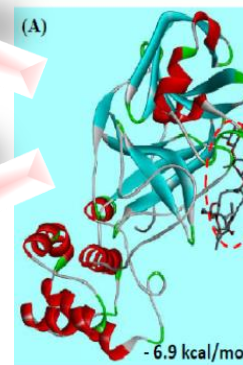
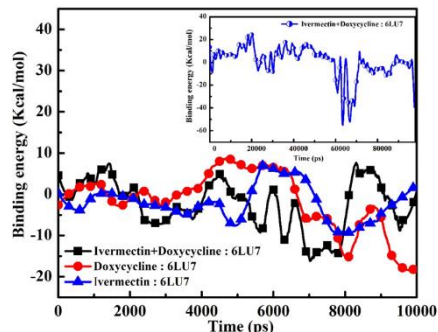
a) Structure of receptor protein: 6LU7



Trajectory of nonbonded interaction



Binding energy of all complexes



Drug: 6LU7 complexes

Sequential docking