

# Acupuncture Mechanism Studies Employing Task-based fMRI: A Scoping Review Protocol

**Yan Yan**

First Teaching Hospital of Tianjin University of Traditional Chinese Medicine <https://orcid.org/0000-0001-5096-2812>

**Ru-ya Sheng**

The third People's Hospital of Changzhou

**Yu Wang**

First Teaching Hospital of Tianjin University of Traditional Chinese Medicine

**Chun-hong Zhang** (✉ [drzch1113@163.com](mailto:drzch1113@163.com))

The First Teaching Hospital of Tianjin University of Traditional Chinese Medicine  
<https://orcid.org/0000-0003-4580-3117>

---

## Protocol

**Keywords:** acupuncture, fMRI, mechanism study, scoping review

**DOI:** <https://doi.org/10.21203/rs.3.rs-73576/v1>

**License:** © ⓘ This work is licensed under a Creative Commons Attribution 4.0 International License.

[Read Full License](#)

---

# Abstract

**Background:** Acupuncture is a widely used alternative and complementary therapy. Functional Magnetic Resonance Imaging (fMRI) is an important technique to explore the underlying mechanism of acupuncture, and the task-based fMRI can reflect the instant effects or sustained effects of acupuncture in the brain. This scoping review aims to summarize the characteristics of acupuncture mechanism studies employing Task-based fMRI and conclude a reference for future studies.

**Methods/design:** This review will follow the Guidance for Conducting Systematic Scoping Reviews. Eligible articles will be collected from 6 databases (PubMed, Embase, Cochrane, CNKI, WanFang and VIP) with the related keywords such as “Acupuncture” and “fMRI” and those articles should be published from the establishment of the database to June 30<sup>th</sup>, 2020. Each research step will involve at least two reviewers. The PRISMA-ScR (Preferred Reporting Items for Systemic Reviews and Meta-Analysis Extension for Scoping Reviews) will be used to organize the review.

**Discussion:** This review aims to clarify the extent of acupuncture mechanism studies employing task-based fMRI. It is supposed to make a critical evaluation or to propose quality requirements for future studies by summarizing the objectives and designs of eligible studies. What’s more, directional suggestions will be provided for further studies.

**Scoping review registration:** Open Science Framework <https://osf.io/zjrdc/>.

## Background

### Rationale:

Acupuncture, as an indispensable component of Traditional Chinese Medicine (TCM), has been rooted and prospering in China for more than two thousand years <sup>[1]</sup>. In the course of treatment, a fine needle is used to pierce into some specific locations on the body, which are usually called acupoints, to treat specific diseases <sup>[2]</sup>. Acupuncture has been gradually accepted as an alternative and complementary non-pharmaceutical therapy worldwide. Meanwhile, an increasing number of researches have been conducted to explore the underlying mechanism of its clinical effects. Traditionally, Chinese acupuncture practitioners are accustomed to operating acupuncture following the theory of acupoint and meridian based on TCM <sup>[3]</sup>, nowadays, the modern natural science theory and methodology are supposed to be applied to reveal the underlying mechanism of acupuncture effect.

Since the last century, a large number of studies of acupuncture have been conducted with various objectives from different aspects globally. On the one hand, some of these studies are carried out among healthy volunteers to explore the substance of meridian, acupoint or acupuncture effect <sup>[4, 5]</sup>, on the other hand, some are conducted among patients in the pathological state. All these studies demonstrate the mechanism of acupuncture from different angles. During the treatment, both the practitioner and

subjects can have the feeling of “Deqi” which refers to the needle sensation [6, 7]. A number of studies have confirmed the central nervous system (CNS) plays a primary role in acupuncture effect [8–10]. Similar to other studies on brain function, neuroimaging technologies have been extensively employed into this area, such as functional Magnetic Resonance Imaging (fMRI) [11, 12], Positron Emission Tomography (PET) [13], electroencephalography (EEG) [14], and magnetoencephalography (MEG) [15]. A study has shown that fMRI and PET/PET-CT are the two most commonly used methods [16]. Compared with PET-CT, the advantages of fMRI lie in being non-invasive and non-radiative and no contrast agent is needed. fMRI explores the functional activities and network connectivity of the brain by acquiring the change of blood-oxygen-level-dependent (BOLD) signal in different experimental conditions [17, 18]. BOLD shows the immediate oxygen consumption and the change of blood flow related to the neural activities of regional brain tissues which can laterally reflect the actual neural electrical activities.

## Definitions and Concepts:

fMRI includes two main types and they are resting-state fMRI (rsfMRI) and task-based fMRI (tbfMRI). Resting-state fMRI (rsfMRI) or task-free fMRI requires the subjects to be in a ‘default’ or ‘idle’ state as much as possible [19], while task-based fMRI (tbfMRI) collects signal changes triggered by the pre-designed tasks or a passive stimulus. [20] Acupuncture is an input-based passive stimulus, and current studies of its underlying effect mechanism can also be divided into these two types.

The rsfMRI studies of acupuncture normally aim to observe the change of BOLD before and after a course of acupuncture treatment [21–23]. Subjects in this kind of studies are always patients but not healthy volunteers. Multiple acupoints that possess specific clinical effects are involved. The course of treatment is usually longer than 4 weeks, during which administrations are performed several times a week. This kind of studies are similar to normal case-control studies or randomized controlled trials, which have pre-set primary outcomes. The data of fMRI in these studies are acquired as a secondary outcome before and after the intervention, and the main objective is to assist other outcomes to evaluate the clinical effect of the acupuncture intervention, or to explore the mechanism of acupuncture effect in CNS. The subjects in these studies should be in a silent state with restrict hearing and sight and no external stimulus should be given. Then, many different analysis methods of the fMRI data, such as Regional homogeneity (RoHo) [24], amplitude of low-frequency fluctuation (ALFF) [25], functional connectivity (FC) [21], and independent component analysis (ICA) [26], can be processed to estimate the activations caused by the acupuncture stimulation. Generally, rsfMRI is used to explore the intrinsic functions’ segregation or specialization of brain networks [27], while the acupuncture fMRI studies can make contributions to researches of brain function.

One of the focuses of this research is tbfMRI employed to explore the changes in brain activation during the acupuncture stimulation or a period after stimulation [28–33]. These studies last for a shorter time taking healthy volunteers or patients as subjects. Besides, they can also be controlled studies involving both healthy volunteers and patients. A small number, one or two, of acupoints are selected in these studies, and a one-time acupuncture administration is given in one experimental program. These studies

usually aim to discuss the instant effects<sup>[31]</sup> and sustained effects<sup>[32]</sup> of acupuncture. According to the theory of TCM, acupuncture may induce long-lasting post-administration effects<sup>[33]</sup>. Therefore, studies that discuss the brain changes causally related to the tasks of acupuncture stimulation should be classified as tbfMRI. Such studies require a series of pre-set acupuncture events or tasks to induce exact activations in the brain. Meanwhile, tbfMRI studies are more pertinent to explore more detailed underlying mechanisms of special manipulations, specific acupoints, and special needle materials. In terms of the program design, it is various because of the various research objectives and researchers' different understandings of fMRI.

The most common design of tbfMRI is Block-design task<sup>[28]</sup>, also called "on-off" model design, which requires a stimulus (on-state) followed by a resting state (off-state) appearing alternately for several times during the scan to locate the activations. In the operation, the fMRI data are collected after acupuncture needles have penetrated the skin. Then the signal of activations is acquired during on-state with a continuous needle manipulation while the baseline signal is collected during off-state with no more manipulation. In the later stage, single-block design, also called modified block-design, has been developed to achieve different objectives.

As above mentioned, there exist sustained effects after an acupuncture is given. Therefore, the signal collected in a block design under the off-state will not ideally return to the baseline. A new paradigm called not-repeated event-related (NRER) design has been developed to adapt to diverse objectives<sup>[33]</sup>. Such a design requires a specific "event", which refers to an independent acupuncture manipulation without the acquisition of fMRI data which should be conducted before and after the "event" with the subjects in a silent state. The changes of brain activity are directly induced by the acupuncture event, and those changes reflect the sustained effects of acupuncture. Hence, the NRER is classified as tbfMRI. The aforementioned data analysis methods, RoHo<sup>[34]</sup>, ALFF<sup>[35]</sup>, FC<sup>[36]</sup>, and ICA<sup>[37]</sup>, can be introduced to diversify the later data processing. What's more, the paradigm of repeated measure NRER has also been designed to investigate the changes of the declining effects after the acupuncture administration<sup>[30]</sup>.

At present, an abundant amount of acupuncture effect underlying mechanism studies employing tbfMRI has been carried out with various objectives. Some of them only focus on exploring the brain activations of specific manipulations or specific acupoints to provide references for further researches<sup>[38]</sup>; some of them discuss the differences between the true acupuncture and sham acupuncture, true acupoints and non-acupoints, in other words, the placebo effect of acupuncture<sup>[39]</sup>; some of them investigate whether acupuncture has clinical effects for diseases, or the effects in CNS<sup>[40]</sup>; some of them explore the specificity of acupoints, which means the different brain activities caused by manipulation in different acupoints<sup>[41]</sup>. Besides, there are some other special objectives. All studies of complex mixed design combining the acupuncture events with active movements or passive stimulations are also conducted for complex purposes<sup>[42-44]</sup>.

## **Objective:**

Although fMRI has been widely employed in the acupuncture mechanism studies, there is no standard of the task design of acupuncture. The factors that influence the acupuncture effects are complicated, such as the choosing of needle types, the manipulations of manual acupuncture and the differences of acupoint selection. It is also exceedingly difficult to statistically analyze many small-sample studies following different design standards. Therefore, future studies require rigorous research designs to highlight the objectives so that the fMRI data can be acquired more efficiently. Hence, it is necessary to make a review of existing studies and a statistical description of the factors related to the experiments is needed. Besides, this research aims to provide references for further studies.

## **Method/design**

This scoping review protocol was finished in accordance with the relevant sections of the Preferred Reporting Items for Systematic Reviews and Meta-Analyses extension for Scoping Reviews (PRISMA-ScR) guideline<sup>[45]</sup>. The final version of this review will be completed under the principle of the Guidance for Conducting Systematic Scoping Reviews<sup>[46]</sup>.

When a science is emerging, a scoping review is of great importance. It allows for a broad view of the nature and range of evidence of a given topic<sup>[47]</sup>. Besides, it offers a framework which would allow for greater breadth to include all pertinent acupuncture researches employing tbfMRI, irrespective of quality. What's more, this approach can be applied to examine and identify the gaps in the evidence.

## **Research questions:**

The purpose of this scoping review is to identify, examine and summarize the status of the design of acupuncture mechanism study employing task-based fMRI. The research questions guiding this review are:

1. What are the research scope and characteristics of the published literature on acupuncture employing task-based fMRI?
2. How can we conduct an acupuncture task-based fMRI study?

## **Inclusion criteria:**

### ***Participants:***

This review will include the clinical studies conducted on human beings. Subjects can be healthy volunteers or patients in a pathological state, and their disease, gender, age, handedness, allocation of the groups, drop out, and other basic information will be extracted as results. Besides, the pathological state of subjects in one study should be accordant with those in the other.

## ***Concept:***

The studies discussed in this review should be those that take acupuncture as the only or the main intervention, employ tbfMRI as an outcome measurement and are completed with detailed descriptions.

Traditional acupuncture intervention types (manual acupuncture, electro-acupuncture, scalp needle, auricular acupuncture) will be considered while the moxibustion and unconventional acupuncture interventions (laser acupuncture, dry acupuncture, catgut embedding acupuncture, intradermal needle, or floating needle) will be excluded.

Task-based fMRI will be the focus of the study, in which acupuncture performance is designed in the task to explore its instant or sustained effects. Besides, the studies that only apply rest-state fMRI will be excluded. Most literature does not clearly explain the paradigms of design, so a full-text review of each fMRI-employed study is needed to identify whether it will be included. For the case-controlled trials conducted in a pathological state, an outcome measurement for therapeutic evaluation is necessary to demonstrate the effect of acupuncture, and it should be connected with fMRI results.

## ***Context:***

This review will explore the eligible clinical studies included by 6 databases of PubMed, Embase, Cochrane, Chinese National Knowledge Infrastructure (CNKI), WanFang database and VIP database. The year range of publication shall be from the inception of the databases to June 2020. The language shall be Chinese or English.

## ***Study types:***

The review will include the experimental or quasi-experimental study of randomized controlled trials, non-randomized controlled trials, cross-over design trials, and case series studies. However, the small sample case reports which mainly focus on clinical effects will be excluded.

## **Search strategy:**

The initial search was finished by having a quick browse of topics of interest on PubMed and it was confirmed that there were no similar studies. Besides, the keywords needed in the search were determined.

The systematized search will be conducted in the 6 databases of 3 in English language and 3 in Chinese language, PubMed, Embase, Cochrane, CNKI, WanFang database and VIP database. Articles in other languages will be excluded. The year range will be set from the inception to June 30<sup>th</sup>, 2020. The whole searching strategy of PubMed is demonstrated in table 1.

Table 1  
Search strategy used in PubMed database

NO.	Search Items
1	fMRI
2	functional MRI
3	functional Magnetic Resonance Imaging
4	OR/1-3
5	Acupuncture
6	acupuncture therapy
7	electroacupuncture
8	Acupoint
9	OR/5-8
10	4 AND 9

The reference list of all the identified articles will be searched again for additional studies. Reviews, diploma dissertations, conference articles, animal studies, and protocol for studies will not be involved.

## Study selection:

Following the search, all identified studies will be uploaded to Endnote X9.2 and duplicates will be removed. The non-English language articles from PubMed will also be removed. Titles and abstracts will be screened by two independent reviewers (YY and SRY) guided by the inclusion criteria. If a study cannot be identified whether it is eligible or not from titles and abstracts, the full text will be browsed. Then, the 2 reviewers will conduct a full-text review of the selected studies to further exclude the ineligible studies. Next, those literatures will be cross checked and problems will be solved by the 2 reviewers. If there are any disagreements, the decision will be made by a third reviewer (CHZ). The process and results of studies selection will be presented in figure 1.

## Data extraction:

Data will be extracted from eligible articles using Excel 2019. The data extraction table will be developed based on the data items detailed below. Any disagreements between the 2 reviewers will be solved through discussion or by referring to a third reviewer. Missing data will be obtained by contacting the author through mail. Modifications will be detailed in the final scoping review.

## Data items:

The following data items will be collected during the data extracting process:

1. Publication characteristics (title, author, year of publication, country of study, the language of the report).
2. Study design (objective of the study, controlled method or not, numbers of group, sample size, drop out)
3. Characteristics of participants (state or disease of participants, age, gender, handedness)
4. The paradigm of acupuncture task (block-design, signal block, modified block, event-related, NRER, repeated measure NRER, mix design)
5. Details of acupuncture intervention (acupoints, needle stimulation, response sought, needle retention time or not, numbers of experiment and their interval, texture of needle, other components of the intervention, controlled intervention, practitioner)
6. Details of fMRI acquisition (brand of fMRI scanner, magnetic field intensity, TR and TE of the scan, the state of subjects under scanning, numbers of process, duration of each process)
7. Details of data preprocessing (Standard Template, statistical method, other additional measurements)

## Result presentation:

The extracted data will be presented in the form of graphs or tables in a manner that aligns to the objective and scope of this scoping review. A qualitative thematic analysis will be undertaken to provide an overview of the literature. Each table or chart will be accompanied by a narrative summary describing how the results relate to the review objectives and questions. The findings will be discussed based on practice and research, and a conclusion which is helpful to the future studies in this field will be drawn.

## Discussion

Some scholars hold that the fMRI scan processes collecting data under the state of silence are supposed to be classified as the rest-state fMRI, such as the above-mentioned NRER design. Besides, the methods for data processing are ordinarily applied in the processing of rsfMRI. In the traditional sense, task-based fMRI only includes block-design or event-related design paradigms. However, in terms of its implementation purpose, tbfMRI studies are employed to explore the instant change of brain activities induced by some stimulations. In recent years, the underlying mechanism of acupuncture effects related with CNS is gradually revealed and lucubrated. Under such background, researchers of acupuncture are also constantly refining and designing new approaches to investigate its instant effects and sustained effects.



From this point of view, these studies can be regarded as tbfMRI instead of being classified only according to traditional views. There are still some conceptual problems because of a lack of summative studies or intensive discussions in this field. The researches in this field are carried out through the imitation of each other without continuity.

Due to the large number of literature and different research methods, this review will adjust the data items to provide a better expression of information in the data extraction and result presentation. The objectives and designs of these studies will be summarized to make a critical evaluation, or to propose quality requirements for future studies. Based on clinical practice or experimental practice, directional suggestions for further studies will be provided.

## **Abbreviations**

TCM: Traditional Chinese Medicine; CNS: central nervous system; fMRI: functional Magnetic Resonance Imaging; PET: Positron Emission Tomography; EEG: electroencephalography; MEG: magnetoencephalography; BOLD: blood-oxygen-level-dependent; rsfMRI: resting-state fMRI; tbfMRI: task-based fMRI; ReHo: Regional homogeneity; ALFF: amplitude of low-frequency fluctuation; FC: functional connectivity; ICA: independent component analysis; NRER: not-repeated event-related; CNKI: Chinese National Knowledge Infrastructure.

## **Declarations**

### **Ethics approval and consent to participate:**

Not applicable.

### **Consent for publication:**

Not applicable.

### **Availability of data and materials:**

All data generated or analyzed during this study will be included in the published scoping review article and will be available upon request.

### **Competing interests:**

The authors declare that they have no competing interests.

## Funding:

This study was supported by a grant from the National Key Research and Development Program of China (No. 2018YFE0181700).

## Authors' contributions:

YY and YW conceived the review protocol and drafted the manuscript. All the authors participated in the design of the search strategy and data extraction data set. YY and RYS formed the data synthesis and analysis plan. In practice, CHZ will monitor each procedure of the review and are responsible for the quality control. All authors have read and approved the publication of the protocol.

## Acknowledgements:

Not applicable.

## References

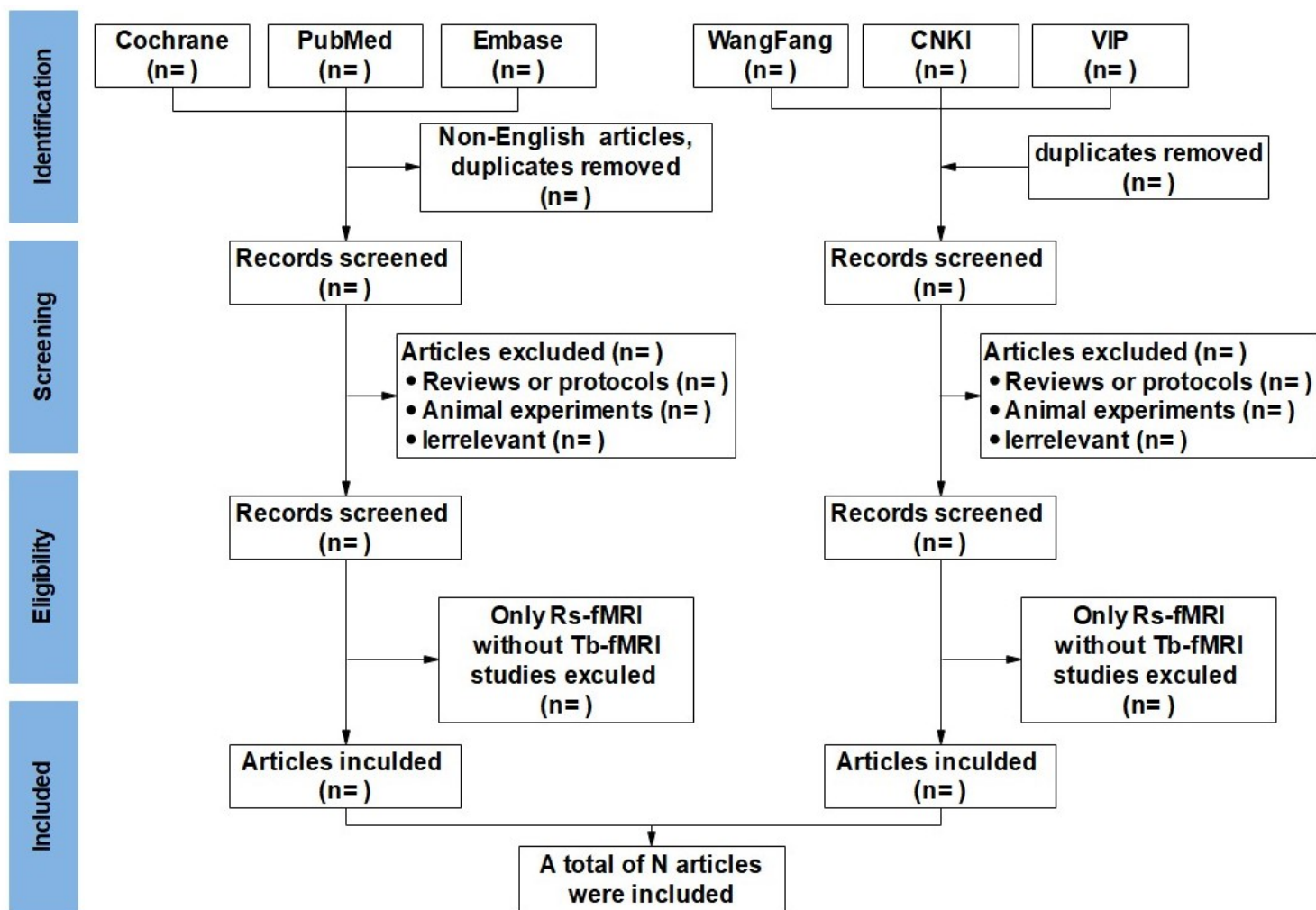
1. Cenicerros S, Brown GR. Acupuncture: a review of its history, theories, and indications. *South Med J*. 1998;91:1121–5.
2. Langevin HM, Wayne PM. What Is the Point? The Problem with Acupuncture Research That No One Wants to Talk About. *J Altern Complement Med*. 2018;24:200–7.
3. Wang GJ, Ayati MH, Zhang WB. Meridian studies in China: a systematic review. *J Acupunct Meridian Stud*. 2010;3:1–9.
4. Stefanov M, Potroz M, Kim J, Lim J, Cha R, Nam MH. The primo vascular system as a new anatomical system. *J Acupunct Meridian Stud*. 2013;6:331–8.
5. Zhou W, Benharash P. Effects and mechanisms of acupuncture based on the principle of meridians. *J Acupunct Meridian Stud*. 2014;7:190–3.
6. Jung WM, Shim W, Lee T, et al. More than DeQi: Spatial Patterns of Acupuncture-Induced Bodily Sensations. *Front Neurosci*. 2016;10:462.
7. Zhou W, Benharash P. Significance of "Deqi" response in acupuncture treatment: myth or reality. *J Acupunct Meridian Stud*. 2014;7:186–9.
8. Hui KK, Liu J, Makris N, et al. Acupuncture modulates the limbic system and subcortical gray structures of the human brain: evidence from fMRI studies in normal subjects. *Hum Brain Mapp*. 2000;9:13–25.
9. Lundeberg T, Lund I, Näslund J. Acupuncture–self-appraisal and the reward system. *Acupunct Med*. 2007;25:87–99.

10. Fang J, Jin Z, Wang Y, et al. The salient characteristics of the central effects of acupuncture needling: limbic-paralimbic-neocortical network modulation. *Hum Brain Mapp.* 2009;30:1196–206.
11. Wang Y, Qin Y, Li H, et al. The Modulation of Reward and Habit Systems by Acupuncture in Adolescents with Internet Addiction. *Neural Plast.* 2020. doi:10.1155/2020/7409417.
12. Cai RL, Shen GM, Wang H, Guan YY. Brain functional connectivity network studies of acupuncture: a systematic review on resting-state fMRI. *J Integr Med.* 2018;16:26–33.
13. Huang Y, Tang C, Wang S, et al. Acupuncture regulates the glucose metabolism in cerebral functional regions in chronic stage ischemic stroke patients—a PET-CT cerebral functional imaging study. *BMC Neurosci.* 2012;13:75.
14. Yang X, Yu H, Zhang T, et al. The effects of Jin's three-needle acupuncture therapy on EEG alpha rhythm of stroke patients. *Top Stroke Rehabil.* 2019;1–5.
15. Dhond RP, Witzel T, Hämäläinen M, Kettner N, Napadow V. Spatiotemporal mapping the neural correlates of acupuncture with MEG. *J Altern Complement Med.* 2008;14:679–88.
16. Qiu K, Jing M, Sun R, et al. The Status of the Quality Control in Acupuncture-Neuroimaging Studies. *Evid Based Complement Alternat Med.* 2016. doi:10.1155/2016/3685785.
17. Ogawa S, Lee TM, Nayak AS, Glynn P. Oxygenation-sensitive contrast in magnetic resonance image of rodent brain at high magnetic fields. *Magn Reson Med.* 1990;14:68–78.
18. Song M, Jiang T. A review of functional magnetic resonance imaging for Brainnetome. *Neurosci Bull.* 2012;28:389–98.
19. Fox MD, Raichle ME. Spontaneous fluctuations in brain activity observed with functional magnetic resonance imaging. *Nat Rev Neurosci.* 2007;8:700–11.
20. Heeger DJ, Ress D. What does fMRI tell us about neuronal activity? *Nat Rev Neurosci.* 2002;3:142–52.
21. Yu SW, Lin SH, Tsai CC, et al. Acupuncture Effect and Mechanism for Treating Pain in Patients With Parkinson's Disease. *Front Neurol.* 2019. doi:10.3389/fneur.2019.01114.
22. Tu Y, Ortiz A, Gollub RL, et al. Multivariate resting-state functional connectivity predicts responses to real and sham acupuncture treatment in chronic low back pain. *Neuroimage Clin.* 2019. doi:10.1016/j.nicl.2019.101885.
23. Zou Y, Tang W, Li X, Xu M, Li J. Acupuncture Reversible Effects on Altered Default Mode Network of Chronic Migraine Accompanied with Clinical Symptom Relief. *Neural Plast.* 2019. doi:10.1155/2019/5047463.
24. Wu T, Long X, Zang Y, et al. Regional homogeneity changes in patients with Parkinson's disease. *Hum Brain Mapp.* 2009;30:1502–10.
25. Zou QH, Zhu CZ, Yang Y, et al. An improved approach to detection of amplitude of low-frequency fluctuation (ALFF) for resting-state fMRI: fractional ALFF. *J Neurosci Methods.* 2008;172:137–41.
26. Beckmann CF, DeLuca M, Devlin JT, Smith SM. Investigations into resting-state connectivity using independent component analysis. *Philos Trans R Soc Lond B Biol Sci.* 2005;360:1001–13.

27. Logothetis NK. What we can do and what we cannot do with fMRI. *Nature*. 2008;453:869–78.
28. Li LL, Liu XW, Wu F, et al. Electroacupuncture Stimulation of Language-Implicated Acupoint Tongli (HT 5) in Healthy Subjects: An fMRI Evaluation Study. *Chin J Integr Med*. 2018;24:822–9.
29. Shan Y, Wang JJ, Wang ZQ, et al. Neuronal Specificity of Acupuncture in Alzheimer's Disease and Mild Cognitive Impairment Patients: A Functional MRI Study. *Evid Based Complement Alternat Med*. 2018. doi:10.1155/2018/7619197.
30. Han HY, Duan XH, Wang KK, et al. Difference changes of functional connectivity network of timevarying effect with LPCG and RPCG as interest of region after acupuncture at SJ6 in healthy subjects: an fMRI study. *Journal of Beijing University of TCM*. 2019;42:325–31.
31. Jin L, Sun J, Xu Z, Yang X, Liu P, Qin W. Intersubject synchronisation analysis of brain activity associated with the instant effects of acupuncture: an fMRI study. *Acupunct Med*. 2018;36:14–20.
32. Liu J, Nan J, Xiong S, Li G, Qin W, Tian J. Additional evidence for the sustained effect of acupuncture at the vision-related acupuncture point, GB37. *Acupunct Med*. 2013;31:185–94.
33. Qin W, Tian J, Bai L, et al. FMRI connectivity analysis of acupuncture effects on an amygdala-associated brain network. *Mol Pain*. 2008;4:55.
34. Pang Y, Liu H, Duan G, et al. Altered Brain Regional Homogeneity Following Electro-Acupuncture Stimulation at Sanyinjiao (SP6) in Women with Premenstrual Syndrome. *Front Hum Neurosci*. 2018;12:104.
35. Chung WY, Liu SY, Gao JC, et al. Modulatory effect of International Standard Scalp Acupuncture on brain activation in the elderly as revealed by resting-state fMRI. *Neural Regen Res*. 2019;14:2126–131.
36. Han X, Bai L, Sun C, et al. Acupuncture Enhances Communication between Cortices with Damaged White Matters in Poststroke Motor Impairment. *Evid Based Complement Alternat Med*. 2019. doi:10.1155/2019/4245753.
37. Lee J, Eun S, Kim J, Lee JH, Park K. Differential Influence of Acupuncture Somatosensory and Cognitive/Affective Components on Functional Brain Connectivity and Pain Reduction During Low Back Pain State. *Front Neurosci*. 2019. doi:10.3389/fnins.2019.01062.
38. Zhang J, Cai X, Wang Y, et al. Different Brain Activation after Acupuncture at Combined Acupoints and Single Acupoint in Hypertension Patients: An Rs-fMRI Study Based on ReHo Analysis. *Evid Based Complement Alternat Med*. 2019. doi:10.1155/2019/5262896.
39. Nierhaus T, Chang Y, Liu B, et al. Somatosensory Stimulation With XNKQ Acupuncture Modulates Functional Connectivity of Motor Areas. *Front Neurosci*. 2019. doi:10.3389/fnins.2019.00147.
40. Yang CH, Choi SH, Kim JS, et al. The Effects of Acupuncture Stimulation for Brain Activation and Alcohol Abstinence Self-Efficacy: Functional MRI Study. *Evid Based Complement Alternat Med*. 2017. doi:10.1155/2017/2850124.
41. Zhang S, Wang X, Yan CQ, et al. Different mechanisms of contralateral- or ipsilateral-acupuncture to modulate the brain activity in patients with unilateral chronic shoulder pain: a pilot fMRI study. *J Pain Res*. 2018;11:505–14.

42. Jung WM, Lee IS, Lee YS, et al. Decoding spatial location of perceived pain to acupuncture needle using multivoxel pattern analysis. *Mol Pain*. 2019. doi:10.1177/1744806919877060.
43. Min S, Kim KW, Jung WM, et al. Acupuncture for Histamine-Induced Itch: Association With Increased Parasympathetic Tone and Connectivity of Putamen-Midcingulate Cortex. *Front Neurosci*. 2019. doi:10.3389/fnins.2019.00215.
44. Bai L, Niu X, Liu Z, et al. The role of insula-cerebellum connection underlying aversive regulation with acupuncture. *Mol Pain*. 2018. doi:10.1177/1744806918783457.
45. Tricco AC, Lillie E, Zarin W, et al. PRISMA extension for scoping reviews (PRISMA- ScR): checklist and explanation. *Ann Intern Med*. 2018;169:467–73.
46. Peters MD, Godfrey CM, Khalil H, McInerney P, Parker D, Soares CB. Guidance for conducting systematic scoping reviews. *Int J Evid Based Healthc*. 2015;13:141–6.
47. Munn Z, Peters MDJ, Stern C, Tufanaru C, McArthur A, Aromataris E. Systematic review or scoping review? Guidance for authors when choosing between a systematic or scoping review approach. *BMC Med Res Methodol*. 2018;18:143.

## Figures



## Figure 1

The process and results of studies selection

## Supplementary Files

This is a list of supplementary files associated with this preprint. Click to download.

- [PRISMAPchecklist.docx](#)