

G6PD deficiency and severity of COVID19 pneumonia and acute respiratory distress syndrome: tip of the iceberg?

Jihad G. Youssef

Houston Methodist Hospital

Faisal Zahiruddin

Houston Methodist Hospital

George Youssef

University of Houston, College of Natural Sciences and Mathematics

Sriram Padmanabhan

Collaborative Action for SARS-CoV-2 Eradication (CARE),

Joe Ensor

Houston Methodist Hospital

Sai Ravi Pingali

Houston Methodist Hospital

Youli Zu

Houston Methodist Hospital

Sandeep Sahay

Houston Methodist Hospital

Swaminathan P. Iyer (✉ spiyer@mdanderson.org)

University of Texas MD Anderson Cancer Center <https://orcid.org/0000-0002-1646-813X>

Short Report

Keywords: COVID19, G6PD, African American, X-linked

Posted Date: December 16th, 2020

DOI: <https://doi.org/10.21203/rs.3.rs-72639/v2>

License: © ⓘ This work is licensed under a Creative Commons Attribution 4.0 International License.

[Read Full License](#)

Version of Record: A version of this preprint was published at Annals of Hematology on January 13th, 2021. See the published version at <https://doi.org/10.1007/s00277-021-04395-1>.

G6PD deficiency and severity of COVID19 pneumonia and Acute respiratory distress syndrome: Tip of the iceberg?

Jihad G. Youssef¹, Faisal Zahiruddin¹, George Youssef², Sriram Padmanabhan³, Joe Ensor⁴, Sai Ravi Pingali⁴, Youli Zu⁵, Sandeep Sahay⁶, and Swaminathan P. Iyer^{3,7}

¹Division of Pulmonary and Critical Care Medicine, Houston Methodist Pulmonary Transplant Center, Houston Methodist Hospital, Houston, Texas, USA

²University of Houston, College of Natural Sciences and Mathematics, Houston, Texas, USA.

³Collaborative Action for SARS-CoV-2 Eradication (CARE), Houston, Texas, USA.

⁴Houston Methodist Cancer Center, Houston Methodist Research Institute, Houston Methodist Hospital, Houston, Texas, USA.

⁵Houston Methodist Department of Pathology and Genomic Medicine, Houston Methodist Research Institute, Houston Methodist Hospital, Houston, Texas, USA.

⁶Division of Pulmonary and Critical Care Medicine, Houston Methodist Lung Center, Houston Methodist Research Institute, Houston Methodist Hospital, Houston, Texas, USA.

⁷Department of Medicine, The University of Texas, MD Anderson Cancer Center, Houston, Texas, USA.

Corresponding author:

Swaminathan P. Iyer, MD

Department of Lymphoma and Myeloma

The University of Texas, MD Anderson Cancer Center

1400, Unit 429, Holcombe Blvd, Houston, TX

Phone: +1 713-792-5242

Fax: 713-745-7423

Email: spiye@mdanderson.org

Running Title: G6PD deficiency in COVID19

Keywords: COVID19, G6PD, African American, X-linked

Word count: 2190

Key Points:

- COVID19 Studies show higher mortality in men, due to severe pneumonia and ARDS, indicating a possible X-linked mediated differences
- G6PD, the most common X-linked enzymopathy, highly prevalent in African Americans and Italians, maintains redox homeostasis.
- Preclinical studies using G6PD deficient (G6PD def) cells infected with human coronavirus (hCoV), show impaired cellular responses, viral proliferation and worsening oxidative damage.
- Retrospective chart review in hospitalized patients with COVID19 pneumonia needing supplemental oxygen shows differences between the two groups (Normal and G6PD def) in hematological indices; the G6PD def group demonstrated prolonged PaO₂/FiO₂ ratio, and longer days on mechanical ventilation indicating the severity of the pneumonia.

Abstract:

The severe pneumonia caused by the human Coronavirus (hCoV)- SARS-CoV-2 has inflicted heavy casualties, especially among the elderly and those with co-morbid illnesses irrespective of their age. The high mortality in African-Americans and males, in general, raises the concern for a possible X-linked mediated process that could affect the viral pathogenesis and the immune system. We hypothesized that G6PD, the most common X linked enzyme deficiency associated with redox status, may have a role in severity of pneumonia. Retrospective chart review was performed in hospitalized patients with COVID19 pneumonia needing supplemental oxygen. A total of 17 patients were evaluated; six with G6PD deficiency (G6PDd), and 11 with normal levels. The two groups (Normal and G6PDd) were comparable in terms of age, sex and co-morbidities, and laboratory parameters-LDH, IL-6, CRP, and Ferritin, respectively. Thirteen patients needed ventilatory support with 8 in the normal group and 5 in the G6PDd group (72% vs.83%). The main differences indicating increasing severity in normal vs. G6PDd

groups included G6PD levels (12.2 vs. 5.6, $P=0.0002$), PaO₂/FiO₂ ratio (159 vs. 108, $P=0.05$), days on mechanical ventilation (10.25 vs. 21 days $P=0.04$), hemoglobin level (10 vs. 8.1 $P=0.03$) and Hematocrit (32 vs. 26 $P=0.015$). Only one patient with G6PDd died; 16 were discharged home. Our clinical series ascribes a possible biological role for G6PDd in SARS-CoV2 viral proliferation. It is imperative that further studies are performed to understand the interplay between the viral and host factors in G6PDd that may lead to disparity in outcomes.

Introduction:

The novel coronavirus SARS-CoV2 that causes coronavirus disease 2019 (COVID19), has approximately afflicted over 72 million people worldwide¹⁻⁴, including approximately 16.2 million in the United States as of December 2020. Among 1,482 patients hospitalized reported by COVID-19–Associated Hospitalization Surveillance Network (COVID-NET), 74.5% were aged ≥ 50 years, and 54.4% were male^{2, 5, 6}. The male predominance hints at X linked related differences in the predilection to the severity of illness. One such possibility is the X-linked glucose-6-phosphate dehydrogenase (G6PD) deficiency (G6PDd), the most common enzymopathy, commonly manifesting as hemolysis due to oxidative stress⁷⁻⁹. With over 200 mutations identified in G6PDd, mainly in the coding regions, causing various degrees of deficiency, it is found in high frequency among African Americans, Mediterranean, and Asians⁸. The gene encoding G6PD is located near the telomeric region of the distal arm of the X chromosome (band Xq28), a well-documented hot spot of a group of genes that includes fragile X, color vision, hemophilia A, and congenital dyskeratosis⁸. The G6PD gene results in many biochemical variants and the deficiency of the gene product-G6PD, which is the rate-limiting enzyme in the pentose-phosphate pathway^{8, 9}. The variants are grouped into four classes- a) Class I variants- comprise the most severe form of G6PDd and lead to chronic non-spherocytic hemolytic anemia, and typically occurs with enzyme activity $<10\%$ of normal; b) Class II variants typically have $<10\%$ residual enzyme activity, but no hemolytic anemia; c) Class III and IV variants ($10\text{--}60\%$ and $60\text{--}150\%$ activity, respectively) have milder phenotypes and hemolysis occurs only after extreme oxidative stress¹⁰. Very severe G6PDd are sporadic and rare, whereas less severe deficiencies are polymorphic, and more common in tropical areas, postulated to be evolved as protection against malaria^{7, 8}. Males are more commonly affected when hemizygous and can be either phenotypically normal or deficient¹⁰. Homozygous females are as deficient as the hemizygous males, whereas heterozygous females are mosaics with intermediate levels of deficiency as a result of random X-chromosome inactivation (lyonization)¹¹. We report here clinical scenarios of six COVID19

positive patients- with no previous respiratory issues with G6PDd, who required longer ventilatory support and ICU care compared to 11 matched controls. Given the role of G6PD in altering redox homeostasis¹², we hypothesize that the deficiency further enhances oxidative stress by uncontrolled production of reactive oxygen species (ROS) during this rapidly evolving inflammation caused by the SARS-CoV-2 virus and host immune system, leading to abnormal pulmonary vascular performance and respiratory decline. This case series warrants a systematic investigation of the role played by G6PD in this unrelenting COVID19 induced pneumonitis.

Methods:

We reviewed the charts of 17 consecutive patients who were admitted to the Houston Methodist hospital and ICU with confirmed COVID19 infection, and where G6PD levels were available with consent, between March 15 and May 15, 2020. Clinical data were obtained through an Institutional Review Board (IRB) approved protocol PRO00025607 that allowed review of medical records. The main inclusion criteria included adults >18 years old with a diagnosis of COVID19 within 24 hours of admission to the hospital and where G6PD levels were obtained. G6PD was considered low if the recorded values were below the laboratory cut-off value of 9.6 U/g Hb; <4.5 was considered severe, values between 4.5 and 9.6 as mild and all other values as normal. Of note, G6PD testing as obtained as baseline in patients as hydroxychloroquine (HCQ) was the first line of treatment per the institutional protocol at the time of the study. Both groups received a 5-day course of HCQ and completed the course by the time G6PD result was reported. The G6PDd patients (3 severe and 3 mild) were compared to the normal cohorts (where the G6PD values were >9.6) in 2:1 matching for age, gender and co-morbidity. The data reported here have follow-up available through June 20, 2020; each patient had at least 21 days of follow-up.

Statistical Analysis:

Descriptive statistics were used to summarize the data; results are reported as means and medians, as appropriate. The unpaired t-test was performed using GraphPad Prism 8 for macOS version 8.4.2 (464),

April 7, 2020, GraphPad Software, San Diego California USA, www.graphpad.com. All comparisons were one-tailed; a p-value of less than 0.05 was considered significant.

Results:

The reverse-transcriptase–polymerase-chain-reaction (RT-PCR) for SARS-CoV2 from samples obtained from the nasopharyngeal swab was positive in 17 patients- 6 with G6PDd and 11 with normal G6PD levels at the time of hospitalization. We used the two groups (Normal and G6PDd) for comparison as they were matched by age-median of 53.3 vs. 53.5 years (p-value of 0.49), gender (50% men), and similar co-morbidities such as diabetes, hypertension, and obesity with body mass index (BMI) of 35.5 vs.31.2 (p-value 0.39) respectively. The G6PDd cohort had a higher number of African-Americans (66% vs, 45%) than the normal cohort (Table 1). All patients presented with cough, and shortness of breath. The chest computed tomography (CT) at admission, showed variations of bilateral peripheral patchy ground-glass opacities but highly suggestive of COVID19 pneumonia. All patients received standard of care treatment as approved by the hospital COVID19 task force, and this included supportive care, HCQ, and in some instances compassionate use remdesivir, convalescent plasma, and anticoagulation if clinically not contraindicated.

No patient tested positive for other respiratory viruses or had any other documented bacterial infections. 13/17 patients needed ventilatory support with 8 in the normal group and 5 in the G6PDd group. Laboratory data (Table 2) were significant for elevated Lactate dehydrogenase (LDH), C-reactive protein (CRP), interleukin-6 (IL-6), ferritin, with no statistical differences between the two groups. The significant difference between the normal and G6PDd patients (Figure 1 A-G) were noticed for G6PD levels (12.2 vs. 5.6, $P=0.0002$), partial pressure of oxygen/ fraction of inspired oxygen (PaO_2/FiO_2) ratio (159 vs. 108, $P=0.05$), days on mechanical ventilation (10.25 vs. 21 days $P=0.04$), hemoglobin level (10 vs. 8.1 $P=0.03$) and Hematocrit (32 vs. 26 $P=0.01$). Three patients required blood transfusion (1 in Normal and 2 in the G6PDd groups, respectively). Only one patient with G6PDd died as the family

decided to withdraw care. Of the 16 surviving patients, five were discharged to rehabilitation units, and 11 were discharged from the ICU to the general wards and eventually home (Figure 1G).

Discussion:

The emerging data from COVID19 shows that the case fatality rate (CFR) is higher in males, indicating a possible X-linked mediated differences in the crosstalk between the SARS-CoV-2 and immune effectors^{2, 5, 6}. We illustrate the potential role of G6PDd in patients hospitalized for COVID19 pneumonia affecting the severity of the disease and the clinical management. Thus far, there are no reports of an association between G6PDd and COVID19, likely because G6PDd was either rare or of mild variety or not reported in the respective populations²⁻⁴. Nevertheless, given the high prevalence of this mutation in African-Americans (1 in 10) and the Italians,^{5, 7} it is important to elucidate the biological differences in the outcomes to COVID19 infection. In our study, a total of 17 patients were enrolled where the G6PD levels were known- six were identified with G6PDd; we used the 11 patients with normal levels as the comparator group. In the deficiency group, two males (both African-Americans) had levels less than 4.5, and the other four patients- one male and the three females (likely hemizygous) had levels just below the lower limit of the established reference (9.6 to 16.6 U/g Hb)¹³.

G6PD converts glucose-6-phosphate into 6-phosphogluconolactone and catalyzes the generation of reduced nicotinamide adenine dinucleotide phosphate (NADPH). Furthermore, NADPH is the critical co-factor for the enzyme glutathione reductase, which reduces glutathione disulfide (GSSG) into reduced glutathione (GSH). GSH eliminates ROS by scavenging the hydroxyl radicals, singlet oxygen, and electrophiles. The deficiency is most pronounced on erythrocytes, which depend solely on the cytosolic pentose phosphate pathway and generation of GSH for oxidative protection. Generally, the outcomes for G6PDd patients with hemolysis is favorable, if they can avoid oxidative triggers commonly encountered due to drugs (including some antimalarial drugs, sulfonamides, and rasburicase)^{7, 9}. Fatigue is the most common symptom followed by dyspnea, dizziness, headache, pallor, chest pain, and

jaundice if hemolysis is severe. A quantitative analysis of G6PD activity¹³ can provide a definitive diagnosis of G6PD deficiency so that the individuals can be advised to avoid drugs, foods, or other oxidizing agents that may precipitate a hemolytic crisis. The severity of the hemolysis is variable and depends on the G6PD allelic mutation and factors such as the dose of the inciting drug. The usual management is supportive care and blood transfusion if hemolysis is severe.

The reasons for testing G6PD in our patients was proactive baseline measurement in preparation for hydroxychloroquine use. As expected, in our study, there were significant differences in the G6PD levels that also correlated with the differences in Hemoglobin and hematocrit (Table 1). More importantly there is increase in the severity of the pulmonary process as demonstrated by the higher requirements of oxygen and longer time on mechanical ventilation. The differences seen as a measure of Lowest PaO₂/FiO₂ is also shown by the similarity of Rothman index between admission and the time of mechanical ventilation with subsequent deterioration in the deficiency group (Table 2 and Figure 1 A-G). The limitation of this study is the retrospective review, the sample size and the lack of power to detect the differences due to intervention. Nevertheless, given the high prevalence of this mutation in African-Americans (1 in 10) and Italians,^{3,5} it is important to elucidate the biological differences in the outcomes to COVID19 infection.

Two questions that are of utmost clinical importance that need answers are: 1) Does the deficiency increase the susceptibility and or the severity to COVID19? 2) How do we judiciously use the pharmacologic array of medications that can potentially worsen the deficiency? One of the severe manifestations of COVID19 is the ARDS characterized by the acute onset of hypoxemia, reduced lung compliance, diffuse lung inflammation and bilateral opacities on chest imaging attributable to noncardiogenic pulmonary edema¹⁴. As details of the pathobiology are still emerging, our understanding of similar viral-mediated lung injury from the previous human coronavirus (hCoV) epidemics of Severe Acute Respiratory Syndrome (SARS) and Middle Eastern Respiratory Syndrome (MERS) points to the

central oxidative stress on the pulmonary vasculature by ROS production causing further alveolar damage limiting gas exchange and setting up right to left shunting of venous blood¹⁵⁻¹⁷. The pathophysiologic process of pulmonary vascular endothelial diathesis is caused by increased oxidant stress and reduced bioavailable nitric acid¹⁵⁻¹⁷. This has also been reported in Influenza infection, which provokes a pro-oxidant condition by increasing ROS production in the host cell to facilitate viral proliferation^{18, 19}. The ROS further inactivates nitric oxide resulting in nitric oxide insufficiency²⁰. The primary determinant of protection against oxidative stress is the ability to maintain GSH stores through the synthesis of NADPH. Since NADPH concentrations are primarily maintained by G6PD encoded by its gene located on Xq28, it follows that its deficiency could result in an inability to eliminate ROS as seen in our patients.

There is now accumulating evidence that G6PD deficiency affects cells other than those of erythrocytes^{12, 21-24}. The replication and spread of respiratory viruses normally involves activation of the antiviral innate immune responses and culminates in the production of type I interferons (IFNs) and proinflammatory cytokines such as tumor necrosis factor-alpha (TNF- α) which in turn upregulate antiviral proteins²⁴. In an *in vitro* study, when G6PD-deficient human fibroblasts and human lung epithelial carcinoma A549 cells were treated with G6PD-RNA interference (RNAi), they showed reduced viability and a 3-fold increase in viral replication²¹. In another study, authors report marked reduction in antiviral genes such as TNF- α in G6PD deficient A549 cells after infection with HCoV-229E, when compared to the parental cell lines²³. Their observations also include decreased nuclear factor kappa-light-chain-enhancer of activated B cells (NF- κ B) activation in virus-infected host cells, pointing to reduced ability to activate timely antiviral responses. Furthermore, a few studies indicate that oxidative stress increases the susceptibility of non-erythroid G6PD-deficient cells to viral infection which could be ameliorated by antioxidant agents, such as lipoic acid²¹.

In another study, G6PD-deficient peripheral blood mononuclear cells (PBMCs) from patients and human monocytic (THP-1) cells showed impaired inflammasome activation. In particular, G6PD knockdown reduced the expression of mature interleukin (IL)-1 β , but not the expression of caspase-1 or the components of the inflammasome (NLRP3, ASC, and pro-Caspase-1) pathway¹². Additionally, there was a differential expression of cytokines between the G6PD-deficient cells and the normal cells. Furthermore, as reported in severe influenza pneumonia^{17, 19}, this pro-oxidant condition can induce secretion of inflammatory cytokines, including interleukin (IL)-1 β , IL-6, IFN, and TNF - α from the microenvironment. This uncontrolled pro-inflammatory response, referred to as the cytokine storm, is abetted by the action of Monocytes/macrophages, neutrophils on the infected lung epithelial cells²². Taken together, these results indicate that G6PD deficiency can allow viral proliferation even as it impairs the cellular immune response through abnormal redox homeostasis. It is imperative that further studies are performed to have an enhanced understanding of the interplay between the viral and host factors in G6PD-deficiency that may lead to disparity in outcomes. This will have significant clinical implications in the management of patients with COVID19 infection.

Author Contributions:

Conception and design: JGY, FZ, SS, and SPI

Manuscript writing: JGY, FZ, GY, MY, SP, JE, SP, YZ, SS and SPI

Data Collection and analysis: JGY, FZ, GY, MY, SP, JE, YZ, SS and SPI

Final approval of manuscript: JGY, FZ, GY, MY, SP, JE, SP, YZ, SS and SPI

Accountable for all aspects of the work: JGY, FZ, MY, SP, JE, SP, YZ, SS and SPI

Statement of Consent: Clinical data were obtained through an Institutional Review Board (IRB) approved protocol PRO00025607 that allowed review of medical records.

Acknowledgements: To Marianne Younes, MA, for editorial support and to Collaborative Action for SARS-CoV-2 Eradication (CARE) Inc- a 501(c) Not for profit group.

Compliance with Ethical Standards:

Funding: No funding for this study.

Conflict of Interest: None for all others except for SS and SPI not pertaining to this work-

SS: Consultant and advisor for United Therapeutics, Actelion and Bayer pharmaceuticals. Also served as speaker for Liquidia technologies. **SI:** Research Grant and Consultant - Seattle Genetics, Rhizen, Daiichi Sankyo, Trillium; Research Grant- Merck, Affimed, Spectrum

Statement of Consent: Clinical data were obtained through an Institutional Review Board (IRB) approved protocol PRO00025607 that allowed review of medical records.

References:

1. JohnsHopkins. COVID-19 Map. @JohnsHopkins. <https://coronavirus.jhu.edu/map.html>
2. Wang D, Hu B, Hu C, et al. Clinical Characteristics of 138 Hospitalized Patients With 2019 Novel Coronavirus-Infected Pneumonia in Wuhan, China. *Jama*. Feb 7 2020;doi:10.1001/jama.2020.1585
3. Onder G, Rezza G, Brusaferro S. Case-Fatality Rate and Characteristics of Patients Dying in Relation to COVID-19 in Italy. *JAMA*. 03/23/2020 2020;doi:10.1001/jama.2020.4683
4. Guan WJ, Ni ZY, Hu Y, et al. Clinical Characteristics of Coronavirus Disease 2019 in China. *N Engl J Med*. Feb 28 2020;doi:10.1056/NEJMoa2002032
5. Garg S KL, Whitaker M, et al. Hospitalization Rates and Characteristics of Patients Hospitalized with Laboratory-Confirmed Coronavirus Disease 2019 — COVID-NET, 14 States, March 1–30, 2020 | *MMWR. MMWR Morb Mortal Wkly Rep*. 2020-04-15T06:45:39Z 2020;69:458–464. doi:<http://dx.doi.org/10.15585/mmwr.mm6915e3external> icon.
6. Grasselli G, Zangrillo A, Zanella A, et al. Baseline Characteristics and Outcomes of 1591 Patients Infected With SARS-CoV-2 Admitted to ICUs of the Lombardy Region, Italy. *Jama*. Apr 6 2020;doi:10.1001/jama.2020.5394
7. Cappellini MD, Fiorelli G. Glucose-6-phosphate dehydrogenase deficiency. *Lancet*. Jan 5 2008;371(9606):64–74. doi:10.1016/s0140-6736(08)60073-2
8. Gómez-Manzo S, Marcial-Quino J, Vanoye-Carlo A, et al. Glucose-6-Phosphate Dehydrogenase: Update and Analysis of New Mutations Around the World. *International journal of molecular sciences*. 12/09/2016 2016;17(12)doi:10.3390/ijms17122069
9. Beutler E. Glucose-6-phosphate Dehydrogenase Deficiency. *N Engl J Med*. 01/17/1991 1991;324(3)doi:10.1056/NEJM199101173240306
10. Online Mendelian Inheritance in Man, (OMIM). * 305900 GLUCOSE-6-PHOSPHATE DEHYDROGENASE; G6PD. *OMIM*. 2020:<https://www.omim.org/entry/305900>.
11. Plenge R, Hendrich B, Schwartz C, et al. A Promoter Mutation in the XIST Gene in Two Unrelated Families With Skewed X-chromosome Inactivation. *Nature genetics*. 1997 Nov 1997;17(3)doi:10.1038/ng1197-353
12. Yen WC, Wu YH, Wu CC, et al. Impaired inflammasome activation and bacterial clearance in G6PD deficiency due to defective NOX/p38 MAPK/AP-1 redox signaling. *Redox Biol*. Jan 2020;28:101363. doi:10.1016/j.redox.2019.101363
13. Powers JL HBD, Grenache DG. Genotype–Phenotype Correlations of Glucose-6-Phosphate–Deficient Variants Throughout an Activity Distribution. *The Journal of Applied Laboratory Medicine*. 2020;2(6):841–850. doi:10.1373/jalm.2017.024935
14. Wu C, Chen X, Cai Y, et al. Risk Factors Associated With Acute Respiratory Distress Syndrome and Death in Patients With Coronavirus Disease 2019 Pneumonia in Wuhan, China. *JAMA Intern Med*. Mar 13 2020;doi:10.1001/jamainternmed.2020.0994
15. Liu J, Zheng X, Tong Q, et al. Overlapping and discrete aspects of the pathology and pathogenesis of the emerging human pathogenic coronaviruses SARS-CoV, MERS-CoV, and 2019-nCoV. *J Med Virol*. May 2020;92(5):491–494. doi:10.1002/jmv.25709
16. Winterbourn CC. Reconciling the chemistry and biology of reactive oxygen species. *Nat Chem Biol*. May 2008;4(5):278–86. doi:10.1038/nchembio.85
17. Khomich OA, Kochetkov SN, Bartosch B, Ivanov AV. Redox Biology of Respiratory Viral Infections. *Viruses*. Jul 26 2018;10(8)doi:10.3390/v10080392
18. Teijaro J, Walsh K, Cahalan S, et al. Endothelial Cells Are Central Orchestrators of Cytokine Amplification During Influenza Virus Infection. *Cell*. 09/16/2011 2011;146(6)doi:10.1016/j.cell.2011.08.015

19. Herold S, Becker C, Ridge KM, Budinger GR. Influenza virus-induced lung injury: pathogenesis and implications for treatment. *Eur Respir J*. May 2015;45(5):1463-78. doi:10.1183/09031936.00186214
20. Short K, Kroeze E, Fouchier R, Kuiken T. Pathogenesis of Influenza-Induced Acute Respiratory Distress Syndrome. *The Lancet Infectious diseases*. 2014 Jan 2014;14(1)doi:10.1016/S1473-3099(13)70286-X
21. Wu YH, Tseng CP, Cheng ML, Ho HY, Shih SR, Chiu DT. Glucose-6-phosphate dehydrogenase deficiency enhances human coronavirus 229E infection. *J Infect Dis*. Mar 15 2008;197(6):812-6. doi:10.1086/528377
22. Channappanavar R, Perlman S. Pathogenic human coronavirus infections: causes and consequences of cytokine storm and immunopathology. *Semin Immunopathol*. Jul 2017;39(5):529-539. doi:10.1007/s00281-017-0629-x
23. Wu YH, Chiu DT, Lin HR, Tang HY, Cheng ML, Ho HY. Glucose-6-Phosphate Dehydrogenase Enhances Antiviral Response through Downregulation of NADPH Sensor HSCARG and Upregulation of NF-kappaB Signaling. *Viruses*. Dec 17 2015;7(12):6689-706. doi:10.3390/v7122966
24. Channappanavar R, Zhao J, Perlman S. T cell-mediated immune response to respiratory coronaviruses. *Immunol Res*. Aug 2014;59(1-3):118-28. doi:10.1007/s12026-014-8534-z

Legend:

Table 1- Patient characteristics

Table 2- Laboratory characteristics

Figure 1 A-G-Differences between the Normal and G6PDd patients A-F- A. Differences in G6PD mean, B. Lowest Hemoglobin, C. Lowest Hematocrit, D. Lowest PaO₂/FiO₂, E. Wait and watch days before intubation, F. Length of mechanical ventilation (LOMV) and G. Kaplan-Meier Survival Curve. A p-value of less than 0.05 was considered significant.

Table 1: Patient characteristics			
Characteristics	Normal G6PD (n=11)	Deficient G6PD (n=6)	t test-one tailed (p-value)
Age (median)	53.3	53.5	0.49
Sex:			
Female	5	3	0.63
Male	6	3	
Race/Ethnicity:			
African American	5	4	0.38
Caucasian	5	0	
Hispanic	0	1	
Asian	0	1	
Prefer not to say	1	0	
Body Mass Index (median)	35.5	31.2	0.39
Co-morbidities			
Hypertension	2	1	
Diabetes Mellitus	4	1	
BMI>36	3	2	
Previous malignancy	1	0	
G6PD mean, U/g Hb	12.2 (9.6-15.3)	5.6 (1.8-9.3)	0.0002
Symptoms	Cough, Shortness of breath, chest discomfort		
Lowest PaO ₂ /FiO ₂	159	108	0.05
Mean Rothman Index	58.63	68.8	0.12
Mean Length of stay (days)	18 (7-32)	23.5 (7-51)	0.18
Wait and watch days before intubation	2.5 (1-6)	4.8 (3-7)	0.06
Length of mechanical ventilation (days)	10.25 (4-16)	21 (5-46)	0.04
Discharge status:			
Home	10	2	-
Rehabilitation/Long term facility	3	2	

Table 2: Laboratory characteristics			
Characteristics	Normal G6PD (n=11) (range)	Deficient G6PD (n=6) (range)	t test- One tailed (p- value)
Lowest WBC, x10 ⁹ /L	5.2 (2.1-6.9)	5.1 (3.0-8.3)	0.16
Lowest Neutrophils %	60 (35-74)	62 (47-82)	0.37
Lowest ALC, x10 ⁹ /L	618 (191-1917)	393 (111-738)	0.16
Lowest Hemoglobin, g/dl	10 (6.5-13)	8.1 (6.6-11)	0.02
Lowest Hematocrit % of red blood cells	32 (20-40)	26 (22-34)	0.015
Platelets, x10 ⁹ /L	425 (337-626)	405 (179-571)	0.38
Peak Lactate, mmol/L	2.1 (1.2-3.5)	5.0 (1.3-16)	0.05
Peak IL-6, pg/L	577 (5-2957)	278 (57-669)	0.24
Peak CRP, mg/L	21 (0.87-41)	28 (15-51)	0.11
Peak Ferritin, mg/L	1371 (476-3648)	7095 (916-32659)	0.07
Peak LDH, IU/L	518 (208-862)	663 (378-996)	0.11
Peak D-dimer	5.7 (0.41-20)	13 (0.6-20)	0.05
Peak AST, IU/L	134 (32-350)	176 (18-302)	0.20
Peak ALT, IU/L	148 (22-527)	216 ((35-503)	0.22
Peak Alkaline phosphatase, IU/L	167 (65-449)	131 (58-279)	0.26
Peak Total bilirubin, µmol/L	1.6 (0.5-3.8)	2.0 (0.5-2.3)	0.22
Highest creatinine, µmol/L	3.3 (0.7-17)	2.0 (0.86-6.4)	0.27
Highest glucose, mg/dl	209 (91-310)	242 (133-378)	0.23
Highest Triglyceride, mg/dl	193 (85-543)	218 (65-416)	0.35
Peak Troponin-I, ng/ml	0.85 (0.006-6.8)	0.28 (0.006-0.5)	0.26
Highest QTc on EKG, ms	476 (437-551)	486 (446-528)	0.32

Abbreviations: ALT (alanine aminotransferase), ALT (absolute lymphocyte count), AST (aspartate aminotransferase), IL-6- interleukin-6, CRP-C-reactive protein, LDH-lactate dehydrogenase,

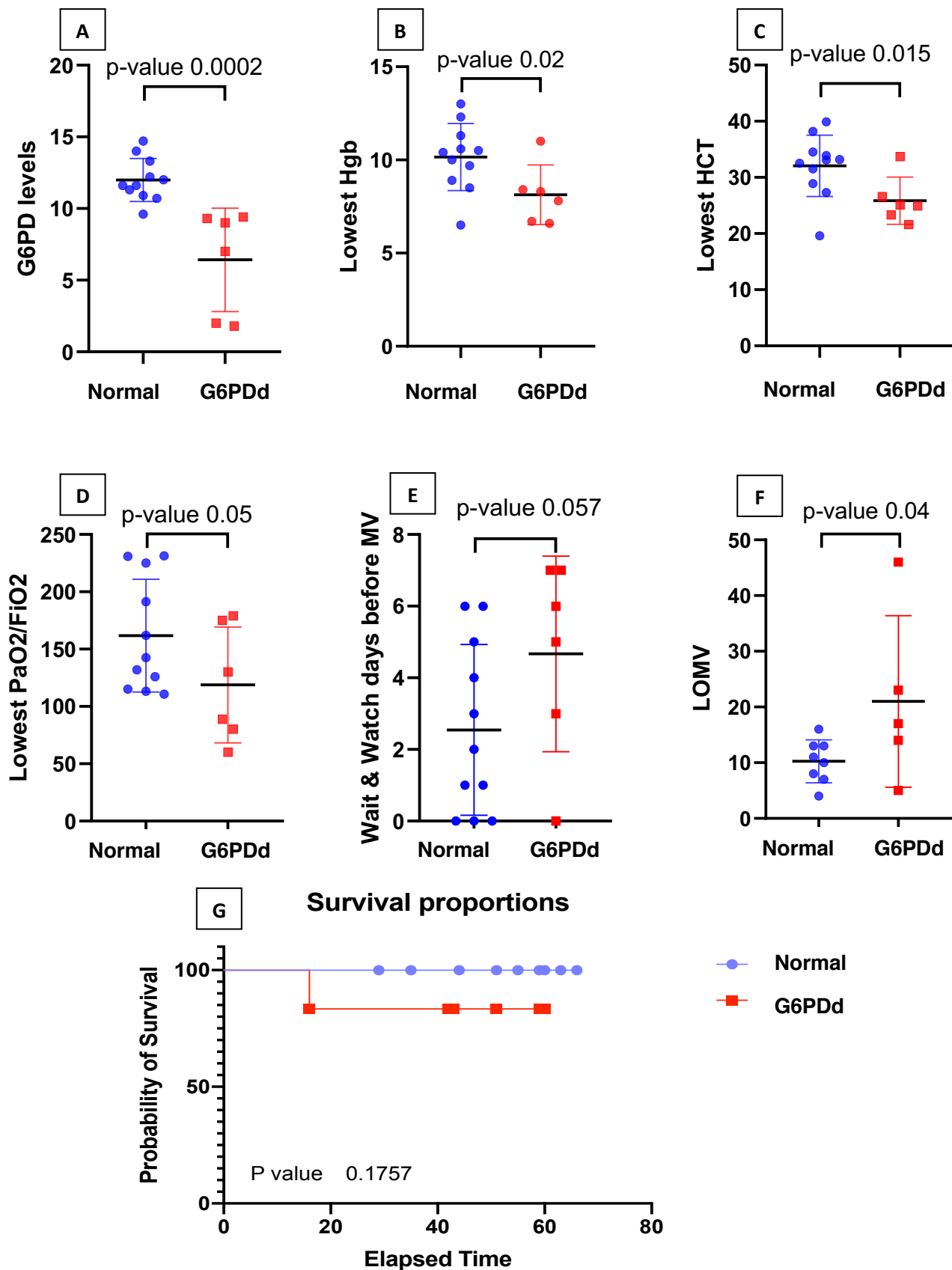


Figure 1 A-G Differences between the Normal and G6PDd patients A-F-A. Differences in G6PD mean, B. Lowest Hemoglobin, C. Lowest Hematocrit, D. Lowest PaO₂/FiO₂, E. Wait and watch days before intubation, F. Length of mechanical ventilation (LOMV) and G. Kaplan-Meier Survival Curve. A p-value of less than 0.05 was considered significant.

Figures

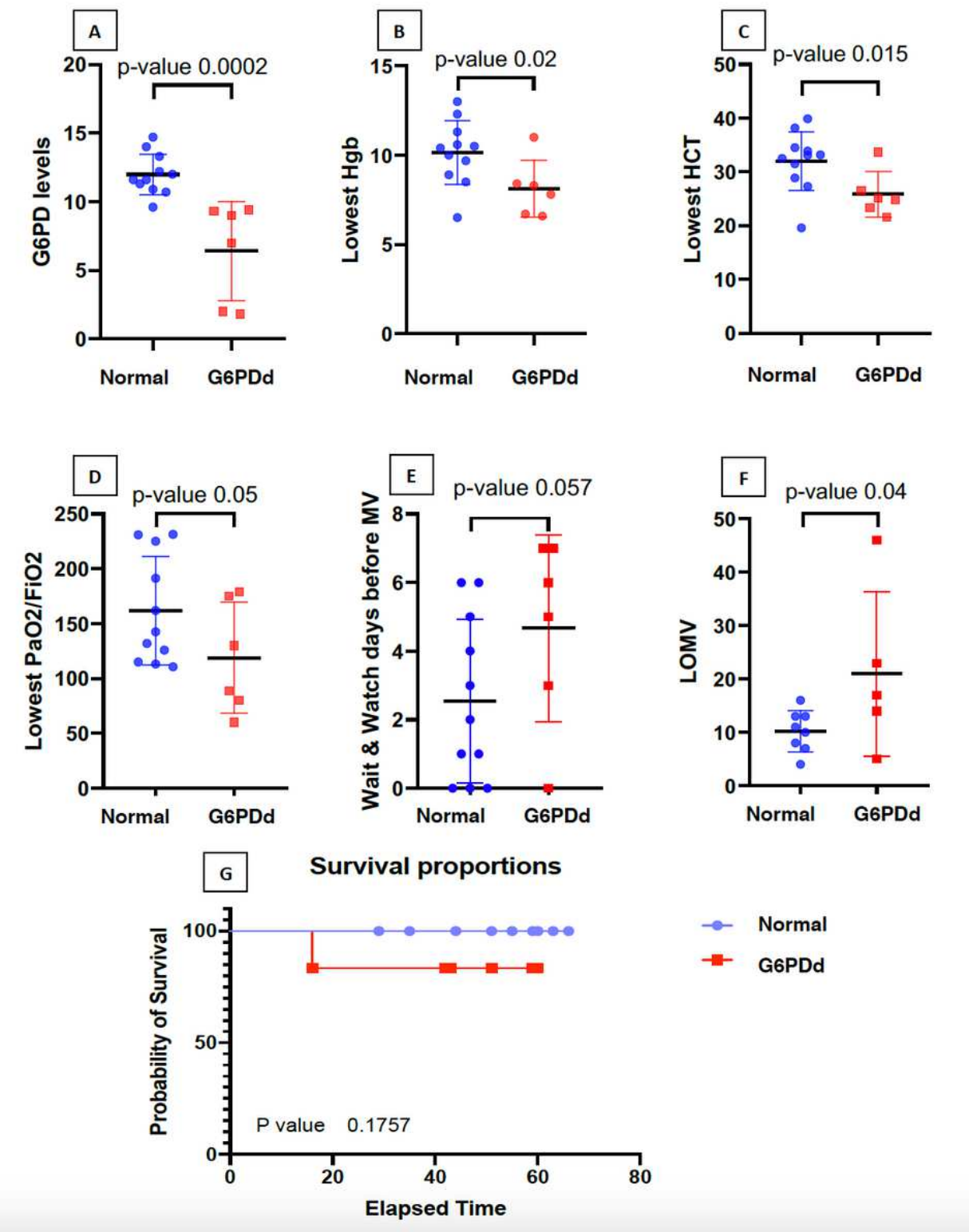


Figure 1

A-G-Differences between the Normal and G6PDd patients A-F- A. Differences in G6PD mean, B. Lowest Hemoglobin, C. Lowest Hematocrit, D. Lowest PaO2/FiO2, E. Wait and watch days before intubation, F.

Length of mechanical ventilation (LOMV) and G. Kaplan-Meier Survival Curve. A p-value of less than 0.05 was considered significant.