

Differential response to intravitreal dexamethasone implant in naïve and previously treated diabetic macular edema eyes

Javier Zarranz-Ventura (✉ jzarranz@hotmail.com)

<https://orcid.org/0000-0003-2338-8143>

Barbara Romero-Nuñez

Hospital Clinic de Barcelona Institut Clinic d'Oftalmologia

Carolina Bernal-Morales

Hospital Clinic de Barcelona Institut Clinic d'Oftalmologia

Daniel Velazquez-Villoria

Hospital Vall d'Hebron

Anna Sala-Puigdollers

Hospital Clinic de Barcelona Institut Clinic d'Oftalmologia

Marc Figueras-Roca

Hospital Clinic de Barcelona Institut Clinic d'Oftalmologia

Sergio Copete

Hospital Vall d'Hebron

Laura Distefano

Hospital Vall d'Hebron

Anna Boixadera

Hospital Vall d'Hebron

Jose García-Arumí

Hospital Vall d'Hebron

Alfredo Adan

Hospital Clinic de Barcelona Institut Clinic d'Oftalmologia

Research article

Keywords: Diabetic Macular Edema, Real world setting, Naïve, Previously treated, Refractory, Dexamethasone, Implant, Ozurdex, Audit, Benchmark standard

Posted Date: October 23rd, 2020

DOI: <https://doi.org/10.21203/rs.3.rs-68436/v2>

License:  This work is licensed under a Creative Commons Attribution 4.0 International License. [Read Full License](#)

Version of Record: A version of this preprint was published on November 11th, 2020. See the published version at <https://doi.org/10.1186/s12886-020-01716-2>.

Abstract

Background: To identify different response patterns to intravitreal dexamethasone implants (IDI) in naïve and previously treated (PT) diabetic macular edema (DME) eyes in a real-life setting.

Methods: 342 IDI injections (203 DME eyes) were included. Number of IDI injections, percentage (%) of eyes with 1, 2, 3 and ³ 4 injections, time to reinjections, visual acuity (VA), intraocular pressure (IOP) and central retinal thickness (CRT) were evaluated for naïve and PT DME eyes over 24 months.

Results: Mean number of injections was significantly lower in naïve vs PT DME eyes (1.40 ± 0.9 vs 1.82 ± 0.9 , $p < 0.001$). The percentage of eyes receiving 1 injection was significantly higher in naïve vs PT DME eyes (76.1 vs 47.7), ($p < 0.001$). However, it was significantly lower for 2 (16.4 vs 29.4), or 3 injections (1.4 vs 17.6) (both $p < 0.001$), with no differences in eyes receiving ³4 injections (5.9 vs 5.1 respectively, $p = 0.80$). Mean time to reinjection was not significantly different between both groups for the second, third and fourth injection (9.6 ± 4.0 vs 10.0 ± 5.5 , $p = 0.75$, 13.2 ± 4.0 vs 16.0 ± 3.5 , $p = 0.21$ and 21.7 ± 3.8 vs 19.7 ± 5.8 , $p = 0.55$). VA scores were consistently better in naïve vs PT DME eyes at all studied timepoints, with no significant differences in CRT reduction or adverse effect rates.

Conclusion: Naïve DME eyes received lower number of IDI injections and showed better VA levels than PT DME eyes for 24 months in a real-world setting. This data supports the IDI use in early DME stages and provide further evidence of better IDI response when used as first-line therapy.

Summary Statement

Intravitreal dexamethasone implants provide better response in naïve than previously treated diabetic macular edema eyes with better visual outcomes and lower number of injections over 24-months, in a large real-world cohort of eyes treated in routine clinical care outside clinical trial criteria.

Background

Diabetic macular edema (DME) is a complex disease of multifactorial origin in which fluid accumulates in the retinal layers due to the disruption of blood retinal barrier and increased vascular permeability.[1–3] Treatment options to manage DME include intravitreal injections of anti-vascular endothelial growth factor (anti-VEGF) or intravitreal corticosteroids (i.e. dexamethasone, fluocinolone acetonide and triamcinolone acetonide).[4–6] The intravitreal dexamethasone implant (IDI, 0.7 mg, Ozurdex®: Allergan, Inc., CA, USA) is a biodegradable, sustained-release drug delivery system that releases dexamethasone into the vitreous for up to 6 months, and is currently approved for the treatment of macular edema secondary to retinal vein occlusion[7], non-infectious posterior uveitis [8] and DME, based on the results of the MEAD trial.[9] This study pooled the data from 2 randomized, multicenter, masked, sham-controlled, phase 3 clinical trials (ClinicalTrials.gov identifiers NCT00168337 and NCT00168389), that demonstrated visual and anatomic improvements in DME eyes, which were confirmed in subsequent trials.[10, 11]

However, significant concerns appear with regards to the applicability of clinical trials results to real world scenarios. First, in clinical practice, the selection criteria are less strict, usually limited to failure of other therapies. This fact is especially relevant as eyes treated with IDIs in routine clinical practice are often those in which other therapies have primarily failed (laser, anti-VEGFs, etc.) and are at risk of developing chronic macular edema, limiting their potential for greater visual gains. Second, the visit and treatment schedule applied in clinical trials rarely reflects real world clinical conditions. In particular, in the MEAD trial reinjections of the IDI could not be performed prior to 6-months, limiting the potential of the implant to achieve greater visual gains in poor responsive eyes. Third, the potential loss of follow-up visits can produce an overestimation of the benefits and/or an underestimation of its side effects, affecting either way the outcomes reported in comparison to clinical trials. For these different reasons, it is important to evaluate the IDI performance in real-life scenarios.

Currently, anti-VEGF therapies are considered the first-line therapy for DME, and meanwhile the importance of corticosteroid therapy has been recognized it is mainly employed as a second-line therapy. As suggested by the EURETINA guidelines for the management of DME [12], IDIs are only considered as first-line therapy in patients whose medical history excludes the use of anti-VEGF therapies or in specific conditions: history of major cardiovascular events, unwillingness to receive monthly injections, or pseudophakic patients. Nevertheless, there is a growing body of evidence in the last years supporting the benefits of IDIs in naïve DME patients, and several

studies have reported better visual outcomes compared to refractory DME eyes.[13, 14] In contrast, very few studies have evaluated specifically the treatment frequency and the number of injections in naïve DME eyes compared to previously treated eyes.

Thus, the purpose of the present study is to audit the use of the IDI in a large series of DME eyes treated in real-life clinical conditions, to identify different treatment patterns in naïve versus previously treated eyes. The study was performed over a 5-year period at two tertiary referral retinal units from a well-defined geographic area that covered a population of 1.8 million individuals. In addition, a specific sub-analysis was carried out to identify differences in baseline characteristics, VA, anatomical outcomes, number of injections and reinjection frequency in naïve eyes (defined as eyes with no prior intravitreal therapies) and previously treated eyes (which previously received intravitreal drugs). The results obtained were compared to those reported in the literature in clinical trials (e.g., MEAD, CHAMPLAIN, BEVORDEX) and previous real world published studies, to address the performance of IDI in a large cohort of unselected DME eyes in real-life conditions.

Methods

Study design

This study was approved by the Institutional Review Board (IRB) at the Hospital Clinic of Barcelona and it was conducted in accordance with the Tenets set forth in the Declaration of Helsinki (HCB/2016/0905). Clinical data were collected retrospectively from 2 specialized tertiary referral retina clinics in Barcelona (Spain): Institut Clínic de Oftalmologia (ICOF) at Hospital Clinic of Barcelona and Hospital Vall d'Hebrón. No written informed consent was required as data was retrospectively collected from routine clinical care, as approved by the reference IRB. All eyes receiving IDI injections for DME between October 2010 and May 2015 were included in the study. A comprehensive dataset was distributed and completed in both study centers within the predetermined timeframe. Patient identifiers were removed to anonymize the data, and data from the individual centres were collated and merged into a centralized database for analysis.

Clinical data collection

Data collected included demographics (age, gender, etc.), laterality, previous local treatments, number of previous injections, number of injections, surgical details, complications, current topical treatments, visual acuity (VA), intraocular pressure (IOP) and central retinal thickness (CRT) assessed by optical coherence tomography (OCT). This data was collected at all the study timepoints: baseline, 1-2 weeks, 6-8 weeks, and 3, 6, 9, 12, 18 and 24-months post-injection of the first IDI. Additional data was collected at each individual repeated injection during the study, including VA, IOP and CRT data prior to the procedure, and 1-2 weeks, 6-8 weeks, and 3 and 6-months post-procedure.

Data sources/outcome measurements

All original data were gathered in routine clinical care visits. All injections data (i.e. injection date, number of injections, pre and post-injection data) were collected as described above. At each time point, VA was determined as the best VA with habitual correction or pinhole, rather than as the best-corrected refracted VA and presented in logarithm of the minimum angle of resolution (logMAR) units. The analysis of eyes with a low VA was undertaken by substituting counting fingers (CF) and hand movement (HM) with 2.0 and 2.3 logMAR, respectively.[15] IOP measurements were obtained by Goldmann tonometry and presented in mmHg. The CRT was determined by OCT imaging using one of 2 different devices depending on the participating center (Hospital Clínic, Cirrus HD-OCT®, Dublin, CA, USA and Hospital Vall de Hebrón, Spectralis OCT®, Heidelberg Engineering, Germany). No research softwares were employed to control for inter-device measurement differences in CRT. No missing value substitutions were performed in patients where data were not available for a particular visit or were lost during follow-up.

Statistical analysis

Descriptive, frequency statistics and the chi-squared test were used to assess the qualitative variables. The normality of quantitative variables was examined in histograms, and inter-group differences were evaluated with an independent Student's T-test and Mann-Whitney U-test, when appropriate. A paired t-test was used to compare pre- and post-treatment changes. For VA change analysis, VA values are converted and presented in ETDRS letters. The cumulative probability of IOP events occurring after IDI injection are

presented as survival curves using the Kaplan Meier (KM) method.[16] High IOP was defined as an IOP greater than 21 mmHg, 25 mmHg or 35 mmHg, as described elsewhere.[17] The probability of IOP elevation was evaluated for naïve and previously treated DME eyes subgroups, and KM survival curves were compared with the log-rank test. A p-value ≤ 0.05 was considered significant.

Results

Baseline demographic and clinical characteristics of study cohort

A total of 203 DME eyes from 179 patients treated with IDIs were included in this study. The baseline characteristics of the patients and study eyes are disclosed in Table 1. In this cohort, 67 eyes (33%) were treatment-naïve, whereas 136 eyes (67%) had previously received intravitreal treatment for DME. Previous intravitreal treatments included intravitreal triamcinolone (IVTA) in 27 eyes (13.3%), anti-VEGF drugs in 84 eyes (41.3%), and both IVTA and anti-VEGF treatment in 25 eyes (12.3%). Overall, previous laser treatment was performed in 154 eyes (75.8%), distributed as macular focal/grid laser therapy in 113 eyes (55.6%) and pan-retinal photocoagulation (PRP) in 110 eyes (54.1%). Mean baseline VA of the overall cohort was 0.92 logMAR (equivalent to 39 ETDRS letters) and mean CRT was 498.7 μ m. A detailed comparison between naïve and previously treated eyes at baseline is shown in Table 1.

Table 1. Patient demographics and clinical characteristics of the study eyes at baseline

Characteristic	Total (N=203)	Treatment-naïve eyes (N=67)	Previously treated eyes (N=136)
Age mean years \pm SD (range)	66.8 \pm 10.3 (43-99)	66 \pm 12.9 (43-99)	67 \pm 8.9 (44-86)
Gender, n (%)			
Female	87 (42.9)	27 (40.3)	61 (44.9)
Male	116 (57.1)	40 (59.7)	75 (55.1)
Lens status in study eye, n (%)			
Phakic	105 (51.7%)	41 (61.2)	64 (47)
Pseudophakic	98 (48.3%)	26 (38.8)	72 (53)
Previous intravitreal therapy, n (%)			
IVTA	27 (13.3)	0 (0)	27 (19.8)
Anti VEGF	84 (41.3)	0 (0)	84 (61.7)
IVTA + Anti VEGF	25 (12.3)	0 (0)	25 (18.3)
Previous laser therapy, n (%)			
Any	154 (75.8)	38 (56.7)	116 (85.2)
Focal/grid	113 (55.6)	25 (37.3)	88 (64.7)
PRP	110 (54.1)	28 (41.7)	82 (60.2)
Mean VA, ETDRS letters (Snellen equivalent) *	39 (20/160)	42.5 (20/160)	37.5 (20/200)
Mean CRT, μ m (SD)	498.7 \pm 136	482.1 \pm 127.5	506.5 \pm 139.7

(IVTA, Intravitreal triamcinolone acetonide; VEGF, vascular endothelial growth factor; PRP, Pan-retinal photocoagulation; VA, Visual acuity; *Logarithm of the minimum angle of resolution values are converted into ETDRS letters; CRT, Central retinal thickness.

Number of injections and treatment burden

In the overall cohort, a total of 342 IDI injections were administered in 203 eyes, with a mean number of injections of 1.68 \pm 0.9 implants in a mean follow-up time of 16.3 \pm 7.7 months (Table 2). The percentage of study eyes in the overall cohort receiving 1 injection was 57.1% (116 eyes), 2 injections was 25.1% (51 eyes), 3 injections was 12.3% (25 eyes) and ≥ 4 injections was 5.4% (11 eyes). In this cohort, the mean time to reinjection was 9.95 \pm 5.2 months for the 2nd injection, 15.71 \pm 4.8 months for the 3rd injection and 20.4 \pm 5.1 months for the 4th injection.

Table 2. Number of Injections and time to reinjection during the study period

	Total (N=203)	Naïve (N=67)	Previously treated (N=136)	P value
Total number of Injections, N (%)	342 (100%)	94 (27.4%)	248 (72.6%)	
Number of Injections, Mean ± SD (Median-IQR)	1.68 ± 0.9 (1-1)	1.40 ± 0.9 (1-0)	1.82 ± 0.9 (2-1)	<0.001
Follow up time (months), Mean ± SD (Median-IQR)	16.3 ± 7.7 (16.1-13.8)	14.5 ± 7.8 (12.4- 13.7)	17.1 ± 7.6 (17.4-13.1)	0.02
Number of injections, n (% study eyes)				
1 injection	116 (57.1%)	51 (76.1%)	65 (47.7%)	<0.001
2 injections	51 (25.1%)	11 (16.4%)	40 (29.4%)	0.04
3 injections	25 (12.3%)	1 (1.4%)	24 (17.6%)	<0.001
≥4 injections	11 (5.4%)	4 (5.9%)	7 (5.1%)	0.80
Time to reinjection after 1 st injection (months), Mean ± SD (Median-IQR)				
2 nd injection	9.95 ± 5.2 (8-5)	9.61 ± 4.0 (8- 3.75)	10.0 ± 5.5 (8-5)	0.75
3 rd injection	15.71 ± 4.8 (15- 7.5)	13.2 ± 4.0 (11-3)	16.0 ± 3.5 (16- 7)	0.21
4 th injection	20.4 ± 5.1 (19.5-8)	21.75 ± 3.8 (21.5-5.75)	19.75 ± 5.8 (18- 5.25)	0.55

SD: Standard deviation; IQR: Interquartile range.

When comparing naïve vs previously treated eyes, the mean number of injections was 1.4 ± 0.9 vs 1.82 ± 0.9 ($p < 0.001$) in a mean follow-up time of 14.5 ± 7.8 vs 17.1 ± 7.9 months ($p = 0.02$), respectively. The percentage of eyes receiving 1 injection was significantly higher in naïve vs previously treated eyes (76.1% vs 47.7%, $p < 0.001$), as was significantly lower in eyes requiring 2 injections (16.4% vs 29.4%, $p = 0.04$) or 3 injections (1.4% vs 17.6%, $p = 0.001$). No differences were observed in the percentage of eyes requiring ≥ 4 injections (5.9% vs 5.1%, $p = 0.80$). Interestingly, no differences between groups were observed in the time to reinjection for 2nd injection (9.61 ± 4.0 vs 10.0 ± 5.5 months, $p = 0.75$), 3rd injection (13.2 ± 4.0 vs 16.0 ± 3.5 months, $p = 0.21$) and 4th injection (21.75 ± 3.8 vs 19.75 ± 5.8 months, $p = 0.55$). All these results are presented in Table 2.

Visual Acuity outcomes

The distribution of eyes by VA levels at each individual timepoints is presented in Figure 1. In the overall cohort, at baseline the percentage of eyes with VA < 0.4 logMAR was 6%, VA $\geq 0.4-0.7$ was 24%, VA $\geq 0.7-1.0$ was 42.5% and VA > 1.0 was 27.5%. At 24 months, the percentage of eyes with VA < 0.4 logMAR was 18.5%, VA $\geq 0.4-0.7$ was 25.7%, VA $\geq 0.7-1.0$ was 28.5% and VA > 1.0 was 27.1%. The percentage of eyes with good VA levels (< 0.4 logMAR and $\geq 0.4-0.7$ logMAR) was significantly higher in naïve vs previously treated eyes in all study timepoints (all $p < 0.05$), as presented in Figure 1.

In the overall cohort, mean baseline VA was 0.92 ± 0.4 LogMAR, at 6-8 weeks was 0.76 ± 0.4 LogMAR and at 24 months was 0.8 ± 0.5 LogMAR (Figure 2 and Table 3). At 24 months, mean VA improvement was +6 letters at 24 months in the overall cohort, with no significant differences in subgroup analysis in treatment-naïve and previously treated eyes (+4.5 letters vs +6.5 letters, $p = 0.70$, Table 3). However, treatment-naïve eyes maintained better mean VA at all timepoints compared to previously treated eyes, with significant differences at 6-8 weeks (mean VA 0.65 ± 0.47 vs 0.81 ± 0.47 , $p < 0.05$) and 3 months (mean VA 0.68 ± 0.53 vs 0.83 ± 0.46 , $p < 0.05$) (Figure 2).

Table 3. Outcome measures before and 24 months after treatment in naïve vs previously treated eyes

	Total (N=203)	Naïve (N=67)	Previously treated (N=136)	p-value
Mean VA, ETDRS letters				
Before treatment (mean ± SD) (Snellen equivalent)	39 ± 61 (20/160)	42.5 ± 57.5 (20/160)	37.5 ± 62.5 (20/200)	0.19
After treatment (mean ± SD)	45 ± 57.5 (20/125)	47 ± 60 (20/125)	44 ± 56 (20/125)	0.71
Mean Change	6	4.5	6.5	0.70
Mean CRT, µm				
Before treatment (mean ± SD)	498.7 ± 136	482.1 ± 127.5	506.5 ± 139.7	0.25
After treatment (mean ± SD)	402.6 ± 154.83	340.5 ± 88.28	427.4 ± 165	0.10
Mean Change	-96.1	-141.5	-79.0	0.46

VA: Visual acuity; ETDRS: Early treatment diabetic retinopathy study; CRT: Central retinal thickness; SD: Standard deviation; IQR: Interquartile range.

Central retinal thickness outcomes

The evolution of CRT changes from baseline in the overall, naïve and previously treated eyes cohorts is presented in Figure 3 and Table 3. Significant improvements were observed in CRT at 6-8 weeks (-181.8 μm , $p < 0.05$) and at 24 months (-96.1 μm , $p < 0.05$). In the subgroup analysis, no differences were observed in CRT improvements between naïve and previously treated eyes at 6-8 weeks (-179.7 μm vs -182.8 μm) or 24 months (-141.5 μm vs -79.0 μm , $p = 0.46$).

Intraocular pressure outcomes

All IOP outcome measures are presented in Figure 4. The cumulative probability of IOP $\geq 21 / 25 / 35$ mmHg at 12 months was 50% / 23% / 6%, and at 24 months was 60% / 30% / 7%, respectively. No significant differences in IOP elevations were observed between naïve and previously treated eyes. At baseline, 41 eyes (20.2%) were already on treatment with topical IOP-lowering drugs. The cumulative probability of requiring IOP-lowering drops was 21.8% at 12 months and 46.2% at 24 months in the overall cohort, with no significant differences between naïve and previously treated eyes. Glaucoma surgery was only required in 1 case (0.49%), that had pre-existing glaucoma and was already on IOP lowering medications prior to first injection. The effect of repeat IDI injections on IOP was also evaluated, and no significant differences were observed in the cumulative probability of any IOP level 6 months after the first, second or third injection.

Discussion

This study reports better visual outcomes and reduced treatment burden in naïve DME eyes compared to previously treated DME eyes, based on a large cohort of DME patients treated with the IDI in routine clinical care. The results of this study support the use of the IDI in early DME stages in patients who do not qualify for anti-VEGF therapy and provide further evidence of better IDI response when used as first-line therapy compared to its use as second-line therapy, after previous failed intravitreal treatments

Our real-world cohort of DME patients presented different demographics and baseline clinical characteristics from those reported in clinical trials, overall with a worse mean baseline VA [18–22] and CRT.[18–21] In our series, a significant number of study eyes were treated in routine clinical care with VA levels that fall outside the inclusion criteria used in the MEAD trial (33.5% of the study cohort, 6% with VA better than 0.4 logMAR and 27.5% with VA worse than 1.0 logMAR, as presented in Figure 1). This data is of particular relevance, as reflects more closely the situation in which such a therapy is to be employed in routine clinical care: patients that require a therapeutic option even though they might not conform to the ideal profile, either in terms of specific disease related parameters, prior treatment failure or co-morbidities. In case of our cohort of previously treated eyes, their basal clinical characteristics are generally worse than those reported previously in real-world studies, particularly with lower baseline VA [22–28] and greater CRT.[23, 29] Moreover, more eyes had received prior treatment, particularly with anti-VEGF and/or IVTA, than the study cohorts in these previous series.[23, 24, 26, 28–30]

The overall results presented here are somehow comparable with those from previous smaller cohorts. Indeed, previous assessments of the effect of IDI on refractory and treatment-naïve patients showed similar decreases in CRT and improvement in VA in both refractory and treatment-naïve groups. Other real-life studies have also shown similar improvements in VA and CRT without serious adverse events, mainly in smaller series over shorter follow-up periods.[31–36] In our population of DME patients, IDI considerably improved the VA relative to baseline in both treatment-naïve and previously treated patients, suggesting that IDI therapy offers benefits to both types of patient. Nevertheless, naïve eyes maintained a better mean VA than previously treated eyes at all time points studied. A particularly significant improvement was observed in naïve patients during the first 3 months relative to previously treated eyes, suggesting they respond better in terms of VA, consistent with earlier data.[22, 24] Moreover, in our series the percentage of eyes with good VA levels was consistently higher in naïve eyes vs previously treated eyes at all study timepoints, as graphically presented in Figure 1. Regarding anatomical changes, IDI treatment improves the CRT at all time points during the follow-up, both in treatment-naïve and previously treated eyes, with no significant differences between these subgroups. This discrepancy between functional and anatomical outcomes in DME has extensively been reported in previous studies, that suggest that retinal thinning may also be related with outer retinal layers atrophy preventing visual improvement, more common in chronic DME eyes.[37]

The need for frequent injections in DME represents a considerable burden for patients, especially with anti-VEGF drugs. [38–40] In different studies, fewer IDI injections have been shown to be necessary to achieve similar visual and anatomical outcomes in DME patients [21, 41, 42], although the loss of vision mainly due to cataract must be controlled, which may be more common when IDIs are used. Further head-to-head trials will be needed to compare the efficacy of IDI and anti-VEGF therapy based on the patients' clinical characteristics at baseline and their prior treatments, tailoring the treatment choice individually in a case-by-case basis. Towards this personalized medicine approach, several attempts have been recently reported to shed some light on predictive biomarkers for IDI response, based in retinal imaging (i.e. OCT) or aqueous samples.[43–46] Likewise, recent studies have been directed to identify those patients who don't respond to anti-VEGF treatment,[47] as well as to determine the synergistic and beneficial effect of IDIs in combination with other treatments.[48, 49]

Significantly fewer IDIs were administered to treatment-naïve eyes than to previously treated eyes and indeed, many more treatment-naïve eyes received just 1 injection than previously treated eyes. However, when additional implants were required, the time to reinjection did not differ significantly between the two groups. This is an important point, as suggest that reinjections were timely performed in both groups when required. Such differences have not always been detected when this parameter has been compared between naïve and non-naïve eyes.[24, 50] Our results raise the interesting hypothesis that early treatment may reduce the treatment burden associated to IDI therapy in naïve DME, beyond the benefit already reported for refractory DME eyes when used as second line therapy. It is well recognized that managing DME with IDIs is generally associated with a need for fewer injections than anti-VEGF therapies, as well as longer periods between the need for treatment. The benefits to be gained from this need for fewer injections have already been recognised in the EURETINA guidelines for DME, whereby IDI use is recommended as a first-line therapy only in specific subgroups of patients. If confirmed in future studies, this finding may offer an additional reason to support the use of IDI as first-line therapy in a wider spectrum of DME eyes.

As found elsewhere, IDI therapy was well tolerated by DME patients. The main adverse event was high IOP but that could typically be managed with medication. Indeed, while nearly a third of patients developed a high IOP, it was controlled with topical antihypertensive drugs. There is no evidence of a previously cumulative effect of multiple injections on increased IOP, irrespective of pre-existing glaucoma or ocular hypertension (OHT).[51, 52] However, the probability of taking IOP-lowering medication increased considerably from 12 months to 24 months, an important consideration when using the IDI in routine clinical care.[53]

Our study has some limitations, such as the retrospective design of the study. In addition, a detailed comparison of the data obtained with that from previous clinical trials and other retrospective studies is complicated by the fact that they involve cohorts with different characteristics at baseline (Table 4). This is particularly the case of DME severity and the inclusion/exclusion criteria, and notably in terms of the baseline VA that differs substantially between trials, as well as the type and length of the prior treatments, and the intervals between the repeated IDI injections. Despite the absence of detailed comparisons, the results of the present study in a clinical setting are somehow comparable to the data from clinical trials. Furthermore, as the data is obtained from a cohort of patients not included in a clinical trial it better reflects patients seen in clinical practice, both treatment-naïve and previously treated patients with DME. Therefore, similar outcomes can be expected of IDI treatment at other clinical centres for DME patients, as reported by previous smaller cohorts. Moreover, it is likely that the patients included in this study are patients that might otherwise not be recommended for such therapy as they do not conform to the criteria employed in clinical trials. It should also be noted that some of the patients considered to be naïve to treatment in this study had received prior laser therapy but not any prior intravitreal therapy. This may contribute to explain differences in treatment response and disease progression (and/or adverse events) between this cohort of naïve patients and those studied elsewhere. Finally, two different OCT machines from two different manufacturers were employed in this study (one in each participating center), but CRT measurements were not adjusted for inter-device differences and this data should be interpreted with caution, especially when comparing these results with other clinical practice studies and trial outcomes

Conclusions

In summary, IDI treatment for DME in our cohort produced favourable outcomes in both naïve and previously treated eyes. These results support the use of IDIs to treat patients with DME in everyday clinical practice, in patients that don't conform to the strict criteria employed in clinical trials. In addition, the data presented here highlight the need for prospective studies to assess the additional benefits of using IDI over anti-VEGF therapies, and in particular, of the use of such implants in naïve DME patients should this additional effect in reducing the treatment burden when compared to refractory DME patients is confirmed in future studies. Such studies may lead to the extension of the EURETINA guidelines that currently limit the recommendation of IDI as a first-line therapy to

Table 4. Comparison of dexamethasone intravitreal implant clinical trials and real-life studies of in diabetic macular edema (series ≥ 30 eyes)

Study	Indication	Duration (months)	N	Baseline VA (letters)	Baseline CRT (mm)	Baseline %laser	Baseline %anti-VEGF	Baseline %IVTA	Final VA, (letters)	Final CRT (mm)
MEAD Boyer DS et al, 2014	DME	36	351	56.1	463.0	65.8%	7.1%	16.5%	58.6	351.4
MEAD-Treated Augustin AJ et al, 2015	DME-Treated	36	247	55.2	478	93.5%	25%	23.5%	58.4	352
CHAMPLAIN Boyer DS et al, 2011	DME-PPV	6	55	54.5	403.4	69.6%	48.2%	57.1%	57.5	364.5
BEVORDEX Gillies MC et al, 2015	DME	24	88	55.5	474.3	-	-	-	62.4	287.3 (*)
Escobar-Barranco et al, 2015	DME-Naive	6	40	59.6	568	0%	-	-	71.1	323
	DME-Treated	6	36	51.3	600	100%	-	-	59.0	281
Dutra et al., 2013	DME-Treated	6	58	52*	543.24	74.1%	75.9%	67.2%	58.5*	420.16
Totan et al., 2016	DME-Treated	6	30	57*	517	56.7%	100%	-	64*	411
Bansal et al., 2015	DME	14.53	52	44*	514.2	100%	67.2%	-	51*	419.9 (6 months)
Bonnin et al., 2015	DME	4	39	51.5*	559	44%	49%	36%	81.5*	477
Guigou et al., 2015	DME treated and naive	6	78	53.9	537.6	42.3%	52.6%	17.9%	60.1	384.6
CHROME Lam et al., 2015	DME (subgroup analysis)	36	34	55*	450.4	55.9%	55.9	38.2	53 (6 months)	259.5
RELDEX Malclès et al., 2017	DME naive and treated	36	128	50.5	450	16.4%	70.3%	15.6%	60.6	280
IRGREL-DEX Igllicki et al., 2019	DME naive and treated	24	130	55*	575	15%	7.4%	-	65.5*	294.4**
<i>This study: Zarranz-Ventura et al. 2020</i>	<i>DME-All</i>	<i>24</i>	<i>203</i>	<i>39</i>	<i>498.7</i>	<i>75.8%</i>	<i>53.6%</i>	<i>25.6%</i>	<i>45</i>	<i>402.6</i>
	<i>Naive</i>	<i>24</i>	<i>67</i>	<i>42.5</i>	<i>482.1</i>	<i>56.7%</i>	<i>0%</i>	<i>0%</i>	<i>47</i>	<i>340.5</i>
	<i>Previously treated</i>	<i>24</i>	<i>136</i>	<i>37.5</i>	<i>506.5***</i>	<i>85.2%</i>	<i>80.1%</i>	<i>38.2%</i>	<i>44</i>	<i>427.4***</i>

DME: diabetic macular edema. VA: visual acuity. CRT: central retinal thickness. VEGF: vascular endothelial growth factor. IVTA: intravitreal triamcinolone acetonide. *Logarithm of the minimum angle of resolution values converted into ETDRS letters.** Calculated from publication data. *** CRT measurements obtained with 2 different OCT machines, unadjusted for inter-device differences.

only a few specific circumstances to a wider spectrum of DME eyes.

Abbreviations

CF: Counting fingers

CRT: Central retinal thickness

DME: Diabetic macular edema

ETDRS: Early treatment diabetic retinopathy study

HM: Hand movement

IDI: Intravitreal dexamethasone implant

IOP: Intraocular pressure

IQR: Interquartile range

IRB: Institutional review board

IVTA: Intravitreal triamcinolone

KM: Kaplan-Meier

LogMAR: logarithm of the minimum angle of resolution

OCT: Optical coherence tomography

PRP: panretinal photocoagulation

PT: previously treated

SD: Standard deviation

VEGF: Vascular endothelial growth factor

VA: Visual acuity

Declarations

- Ethics approval and consent to participate: This study was approved by the Institutional Review Board at the Hospital Clinic of Barcelona (HCB/2016/0905) and it was conducted in accordance with the Tenets set forth in the Declaration of Helsinki. No written informed consent was required as data was retrospectively collected from routine clinical care, as approved by the reference Institutional Review Board.

- Consent for publication: Not applicable

- Availability of data and material: The datasets used and/or analyzed during the current study are available from the corresponding author on reasonable request.

- Competing interests: JZV has been in advisory boards and is a consultant, lecturer, grant recipient and has received travel grants from Alcon, Alimera Sciences, Allergan, Bausch and Lomb, Bayer, Brill Pharma, DORC, Novartis, Roche, Topcon and Zeiss; BRN, none; CBM, none; DVV, none; ASP has given lectures for Allergan and Bayer and is a member of the Allergan International Retina Panel; MFR has given lectures for Allergan; SC, none; LD, none; AB has given lectures for Allergan, Bayer, and Novartis; JGA has been in advisory boards and has received grants from Alcon, Allergan, Bayer, Novartis; AA has been in advisory boards and is a consultant for Abbvie, Alcon, Alimera Sciences, Allergan, Bayer and Novartis, and has given lectures for Topcon and Zeiss.

- Funding: This work was partially supported by a research grant from Allergan. The company or associated companies did not have any access to the study design, the study data or the study conclusions.

- Authors' contributions: Conceptualization: JZV; Data curation: JZV, BRN, CBM, DVV, ASP, SC, LD, AB; Formal analysis: JZV, BRN, CBM; Investigation: JZV, BRN, CBM; Methodology: JZV; Project administration: JZV, BRN, CBM; Supervision: JZV; Validation: JZV; Visualization: JZV; Writing-original draft: JZV, BRN, CBM; Writing-review & editing: JZV, BRN, CBM, DVV, ASP, MFR, SC, LD, AB, JGA, AA. All authors have read and approved the manuscript.

- Acknowledgements: The authors would like to thank the patients that attended the visits described in this series, as well as the help provided by the administrative and support staff in the daily work at the Retinal services of both study centers.

References

1. Bhagat N, Grigorian RA, Tutela A, Zarbin MA. Diabetic Macular Edema: Pathogenesis and Treatment. *Surv Ophthalmol*. 2009;54:1–32. doi:10.1016/j.survophthal.2008.10.001.
2. Ehrlich R, Harris A, Ciulla TA, Kheradiya N, Winston DM, Wirostko B. Diabetic macular oedema: Physical, physiological and molecular factors contribute to this pathological process. *Acta Ophthalmologica*. 2010.
3. Erickson KK, Sundstrom JM, Antonetti DA. Vascular permeability in ocular disease and the role of tight junctions. *Angiogenesis*. 2007;10:103–17. doi:10.1007/s10456-007-9067-z.
4. GILLIES M, SUTTER F, SIMPSON J, LARSSON J, ALI H, ZHU M. Intravitreal Triamcinolone for Refractory Diabetic Macular Edema Two-Year Results of a Double-Masked, Placebo-Controlled, Randomized Clinical Trial. *Ophthalmology*. 2006;113:1533–8. doi:10.1016/j.ophtha.2006.02.065.
5. Campochiaro PA, Brown DM, Pearson A, Ciulla T, Boyer D, Holz FG, et al. Long-term benefit of sustained-delivery fluocinolone acetonide vitreous inserts for diabetic macular edema. *Ophthalmology*. 2011.
6. Zarranz-Ventura J, Mali JO. Effectiveness of 190 µg Fluocinolone Acetonide and 700 µg Dexamethasone Intravitreal Implants in Diabetic Macular Edema Using the Area-Under-the-Curve Method: The CONSTANT Analysis. 2020. doi:10.2147/OPHTH.S253370.
7. Haller JA, Bandello F, Belfort R, Blumenkranz MS, Gillies M, Heier J, et al. Randomized, Sham-Controlled Trial of Dexamethasone Intravitreal Implant in Patients with Macular Edema Due to Retinal Vein Occlusion. *Ophthalmology*. 2010;117:1134-1146.e3. doi:10.1016/j.ophtha.2010.03.032.
8. Lowder C. Dexamethasone Intravitreal Implant for Noninfectious Intermediate or Posterior Uveitis. *Arch Ophthalmol*. 2011;129:545. doi:10.1001/archophthalmol.2010.339.
9. Boyer DS, Yoon YH, Belfort R, Bandello F, Maturi RK, Augustin AJ, et al. Three-Year, Randomized, Sham-Controlled Trial of Dexamethasone Intravitreal Implant in Patients with Diabetic Macular Edema. *Ophthalmology*. 2014;121:1904–14. doi:10.1016/j.ophtha.2014.04.024.
10. Gillies MC, Lim LL, Campain A, Quin GJ, Salem W, Li J, et al. A randomized clinical trial of intravitreal bevacizumab versus intravitreal dexamethasone for diabetic macular edema: The BEVORDEX study. *Ophthalmology*. 2014.
11. Fraser-Bell S, Lim LL, Campain A, Mehta H, Aroney C, Bryant J, et al. Bevacizumab or Dexamethasone Implants for DME: 2-year Results (The BEVORDEX Study). *Ophthalmology*. 2016;123:1399–401. doi:10.1016/j.ophtha.2015.12.012.
12. Schmidt-Erfurth U, Garcia-Arumi J, Bandello F, Berg K, Chakravarthy U, Gerendas BS, et al. Guidelines for the Management of Diabetic Macular Edema by the European Society of Retina Specialists (EURETINA). *Ophthalmologica*. 2017;237:185–222. doi:10.1159/000458539.
13. Escobar-Barranco JJ, Pina-Marín B, Fernández-Bonet M. Dexamethasone implants in patients with naïve or refractory diffuse diabetic macular edema. *Ophthalmologica*. 2015.
14. Igllicki M, Busch C, Zur D, Okada M, Mariussi M, Chhablani JK, et al. DEXAMETHASONE IMPLANT FOR DIABETIC MACULAR EDEMA IN NAIVE COMPARED WITH REFRACTORY EYES: The International Retina Group Real-Life 24-Month Multicenter Study. The IRGREL-DEX Study. *Retina*. 2019;39:44–51.
15. Lange C, Feltgen N, Junker B, Schulze-Bonsel K, Bach M. Resolving the clinical acuity categories ‘hand motion’ and ‘counting fingers’ using the Freiburg Visual Acuity Test (FrACT). *Graefes Arch Clin Exp Ophthalmol*. 2009.
16. Kaplan EL, Meier P. Nonparametric Estimation from Incomplete Observations. *J Am Stat Assoc*. 1958.
17. Maturi RK, Pollack A, Uy HS, Varano M, Gomes AMV, Li XY, et al. Intraocular pressure in patients with diabetic macular edema treated with dexamethasone intravitreal implant in the 3-year mead study. *Retina*. 2016.
18. Boyer DS, Yoon YH, Belfort R, Bandello F, Maturi RK, Augustin AJ, et al. Three-year, randomized, sham-controlled trial of dexamethasone intravitreal implant in patients with diabetic macular edema. *Ophthalmology*. 2014.
19. Boyer DS, Faber D, Gupta S, Patel SS, Tabandeh H, Li XY, et al. Dexamethasone intravitreal implant for treatment of diabetic macular edema in vitrectomized patients. *Retina*. 2011.
20. Augustin AJ, Kuppermann BD, Lanzetta P, Loewenstein A, Li XY, Cui H, et al. Dexamethasone intravitreal implant in previously treated patients with diabetic macular edema: Subgroup analysis of the MEAD study. *BMC Ophthalmol*. 2015.
21. Gillies MC, Lim LL, Campain A, Quin GJ, Salem W, Li J, et al. A randomized clinical trial of intravitreal bevacizumab versus intravitreal dexamethasone for diabetic macular edema: The BEVORDEX study. *Ophthalmology*. 2014.

22. Escobar-Barranco JJ, Pina-Marín B, Fernández-Bonet M. Dexamethasone implants in patients with naïve or refractory diffuse diabetic macular edema. *Ophthalmologica*. 2015.
23. Malcles A, Dot C, Voirin N, Agard E, Vie AL, Bellocq D, et al. Real-life study in diabetic macular edema treated with dexamethasone implant: The reldex study. *Retina*. 2017;37:753–60.
24. Iglicki M, Busch C, Zur D, Okada M, Mariussi M, Chhablani JK, et al. Dexamethasone implant for diabetic macular edema in naïve compared with refractory eyes: The international retina group real-life 24-month multicenter study: The irgel-dex study. *Retina*. 2019.
25. Dutra Medeiros M, Postorino M, Navarro R, Garcia-Arumí J, Mateo C, Corcóstegui B. Dexamethasone intravitreal implant for treatment of patients with persistent diabetic macular edema. *Ophthalmologica*. 2014.
26. Totan Y, Güler E, Güṙaçaç FB. Dexamethasone intravitreal implant for chronic diabetic macular edema resistant to intravitreal bevacizumab treatment. *Curr Eye Res*. 2016.
27. Bansal P, Gupta V, Gupta A, Dogra MR, Ram J. Efficacy of Ozurdex implant in recalcitrant diabetic macular edema—a single-center experience. *Int Ophthalmol*. 2016.
28. Bonnin S, Dupas B, Sanharawi M El, Perol J, Erginay A, Tadayoni R, et al. Efficacy of dexamethasone intravitreal implant for the treatment of diabetic macular edema. *Eur J Ophthalmol*. 2015.
29. Lam WC, Albiani DA, Yoganathan P, Chen JC, Kherani A, Maberley DAL, et al. Real-world assessment of intravitreal dexamethasone implant (0.7 mg) in patients with macular edema: The CHROME study. *Clin Ophthalmol*. 2015.
30. Guigou S, Pommier S, Meyer F, Hajjar C, Merite PY, Parrat E, et al. Efficacy and safety of intravitreal dexamethasone implant in patients with diabetic macular edema. *Ophthalmologica*. 2015.
31. Chhablani J, Bansal P, Veritti D, Sambhana S, Sarao V, Pichi F, et al. Dexamethasone implant in diabetic macular edema in real-life situations. *Eye*. 2016.
32. Zhioua I, Semoun O, Lalloum F, Souied EH. Intravitreal dexamethasone implant in patients with ranibizumab persistent diabetic macular edema. *Retina*. 2015.
33. Chatziralli I, Theodossiadis P, Parikakis E, Dimitriou E, Xirou T, Theodossiadis G, et al. Dexamethasone Intravitreal Implant in Diabetic Macular Edema: Real-Life Data from a Prospective Study and Predictive Factors for Visual Outcome. *Diabetes Ther*. 2017.
34. Matonti F, Pommier S, Meyer F, Hajjar C, Merite PY, Parrat E, et al. Long-term efficacy and safety of intravitreal dexamethasone implant for the treatment of diabetic macular edema. *Eur J Ophthalmol*. 2016.
35. Querques L, Querques G, Lattanzio R, Gigante SR, Del Turco C, Corradetti G, et al. Repeated intravitreal dexamethasone implant (Ozurdex®) for retinal vein occlusion. *Ophthalmologica*. 2012.
36. Moon BG, Lee JY, Yu HG, Song JH, Park YH, Kim HW, et al. Efficacy and Safety of a Dexamethasone Implant in Patients with Diabetic Macular Edema at Tertiary Centers in Korea. *J Ophthalmol*. 2016.
37. Nunes S, Pereira I, Santos A, Bernardes R, Cunha-Vaz J. Central retinal thickness measured with HD-OCT shows a weak correlation with visual acuity in eyes with CSME. *Br J Ophthalmol*. 2010.
38. Nguyen QD, Brown DM, Marcus DM, Boyer DS, Patel S, Feiner L, et al. Ranibizumab for diabetic macular edema: Results from 2 phase iii randomized trials: RISE and RIDE. *Ophthalmology*. 2012.
39. Brown DM, Nguyen QD, Marcus DM, Boyer DS, Patel S, Feiner L, et al. Long-term outcomes of ranibizumab therapy for diabetic macular edema: The 36-month results from two phase III trials: RISE and RIDE. *Ophthalmology*. 2013.
40. Do D V, Nguyen QD, Boyer D, Schmidt-Erfurth U, Brown DM, Vitti R, et al. One-year outcomes of the da VINCI study of VEGF trap-eye in eyes with diabetic macular edema. In: *Ophthalmology*. 2012.
41. Mitchell P, Bandello F, Schmidt-Erfurth U, Lang GE, Massin P, Schlingemann RO, et al. The RESTORE study: Ranibizumab monotherapy or combined with laser versus laser monotherapy for diabetic macular edema. *Ophthalmology*. 2011.
42. Fraser-Bell S, Lim LL, Campain A, Mehta H, Aroney C, Bryant J, et al. Bevacizumab or Dexamethasone Implants for DME: 2-year Results (The BEVORDEX Study). *Ophthalmology*. 2016.
43. Zur D, Iglicki M, Busch C, Invernizzi A, Mariussi M, Loewenstein A, et al. OCT Biomarkers as Functional Outcome Predictors in Diabetic Macular Edema Treated with Dexamethasone Implant. In: *Ophthalmology*. 2018.

44. Zur D, Iglicki M, Sala-Puigdollers A, Chhablani J, Lupidi M, Fraser-Bell S, et al. Disorganization of retinal inner layers as a biomarker in patients with diabetic macular oedema treated with dexamethasone implant. *Acta Ophthalmol.* 2019;:1–7.
45. Fonollosa A, Zarranz-Ventura J, Valverde A, Becerra E, Bernal-Morales C, Pastor-Idoate S, et al. Predictive capacity of baseline hyperreflective dots on the intravitreal dexamethasone implant (Ozurdex®) outcomes in diabetic macular edema: a multicenter study. *Graefes Arch Clin Exp Ophthalmol.* 2019;257:2381–90.
46. Figueras-Roca M, Sala-Puigdollers A, Zarranz-Ventura J, Alba-Linero C, Alforja S, Esquinas C, et al. Anatomic response to intravitreal dexamethasone implant and baseline aqueous humor cytokine levels in diabetic macular edema. *Investig Ophthalmol Vis Sci.* 2019;60:1336–43.
47. Busch C, Zur D, Fraser-Bell S, Laíns I, Santos AR, Lupidi M, et al. Shall we stay, or shall we switch? Continued anti-VEGF therapy versus early switch to dexamethasone implant in refractory diabetic macular edema. *Acta Diabetol.* 2018;55:789–96. doi:10.1007/s00592-018-1151-x.
48. Mehta H, Hennings C, Gillies MC, Nguyen V, Campain A, Fraser-Bell S. Anti-vascular endothelial growth factor combined with intravitreal steroids for diabetic macular oedema. *Cochrane Database Syst Rev.* 2018;2018.
49. Comet A, Gascon P, Sauvan L, Donnadiou B, Matonti F. INVICTUS: intravitreal anti-VEGF and dexamethasone implant comparison for the treatment of diabetic macular edema: a 6 months follow-up Study. *Acta Ophthalmol.* 2019;97:e937–8.
50. Malcles A, Dot C, Voirin N, Agard E, Vie AL, Bellocq D, et al. Real-life study in diabetic macular edema treated with dexamethasone implant: The reldex study. *Retina.* 2017;37:753–60.
51. Zarranz-Ventura J, Sala-Puigdollers A, Velazquez-Villoria D, Figueras-Roca M, Copete S, Distefano L, et al. Long-term probability of intraocular pressure elevation with the intravitreal dexamethasone implant in the real-world. *PLoS One.* 2019.
52. Maturi RK, Pollack A, Uy HS, Varano M, Gomes AMV, Li XY, et al. Intraocular pressure in patients with diabetic macular edema treated with dexamethasone intravitreal implant in the 3-year mead study. *Retina.* 2016.
53. Rajesh B, Zarranz-Ventura J, Fung AT, Busch C, Sahoo NK, Rodriguez-Valdes PJ, et al. Safety of 6000 intravitreal dexamethasone implants. *Br J Ophthalmol.* 2020.

Appendix 1

APPENDIX 1

Hospital Clínic¹ - Hospital Vall de Hebron² Intravitreal Dexamethasone Implant study group (in alphabetical order):

- Alfredo Adan¹
- Socorro Alforja¹
- Carolina Bernal-Morales¹
- Anna Boixadera²
- Ricardo P. Casaroli-Marano¹
- Sergio Copete²
- Laura Distefano²
- Marc Figueras-Roca¹
- Jose García-Arumi²
- Joan Giralt¹
- Victor Llorens¹
- Marina Mesquida¹
- Manuel J. Navarro-Angulo¹
- Laura Pelegrin¹
- Barbara Romero-Núñez¹
- Anna Sala-Puigdollers¹

- Daniel Velazquez-Villoria²
- Miguel Angel Zapata²
- Javier Zarranz-Ventura¹

Figures

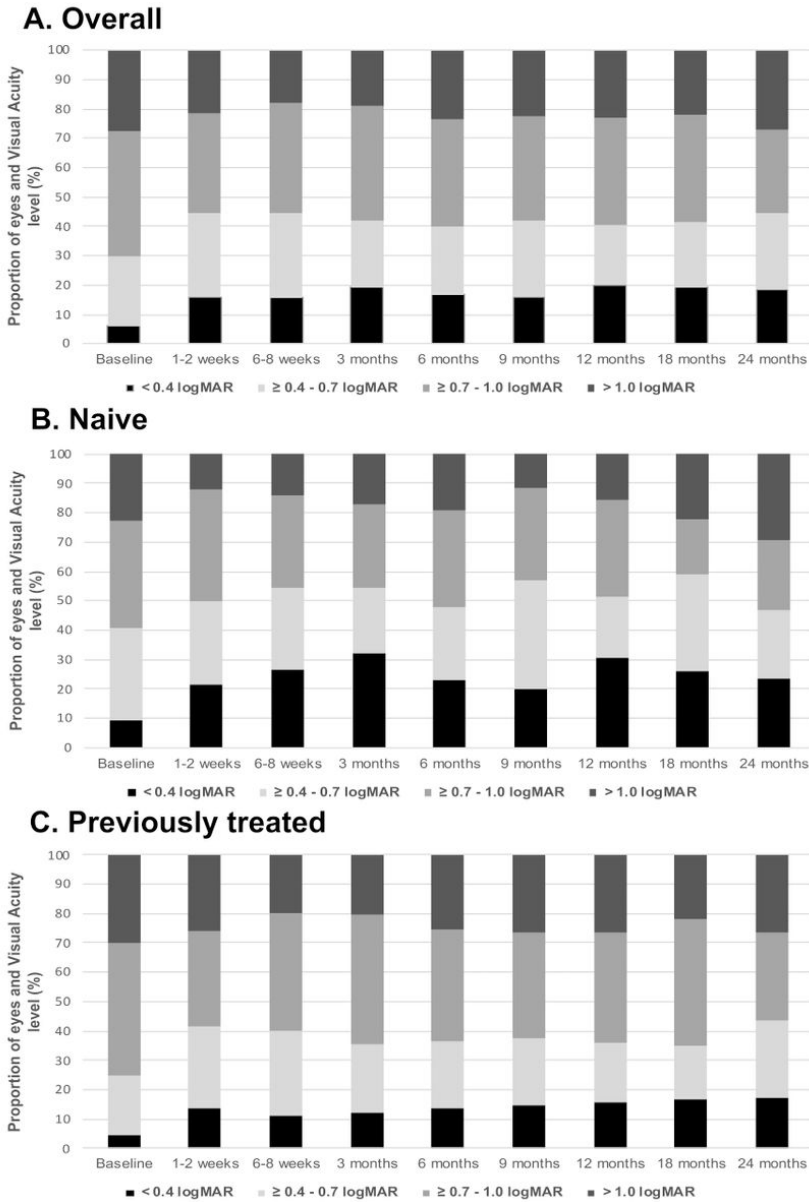


Figure 1

Distribution of diabetic macular edema (DME) study eyes by visual acuity level at all timepoints. A. Overall cohort. B: Naïve eyes. C: Previously treated eyes. At baseline, eyes with very good vision (black) and very poor vision (dark gray) were treated with the implant in routine clinical care. These two categories fall outside the MEAD clinical trial inclusion criteria and represent 33.5% of the study cohort (6% and 27.5%, respectively), highlighting the need for real world studies to evaluate the performance of the implant outside clinical trial scenarios. Naïve DME eyes showed consistently greater percentages of eyes with good vision (black and light gray) than previously treated DME eyes at all timepoints over 24 months. (Visual acuity levels; black: <0.4 logMAR; light gray: ≥0.4-0.7 logMAR; medium gray: ≥0.7-1.0 logMAR; dark gray: >1.0 logMAR).

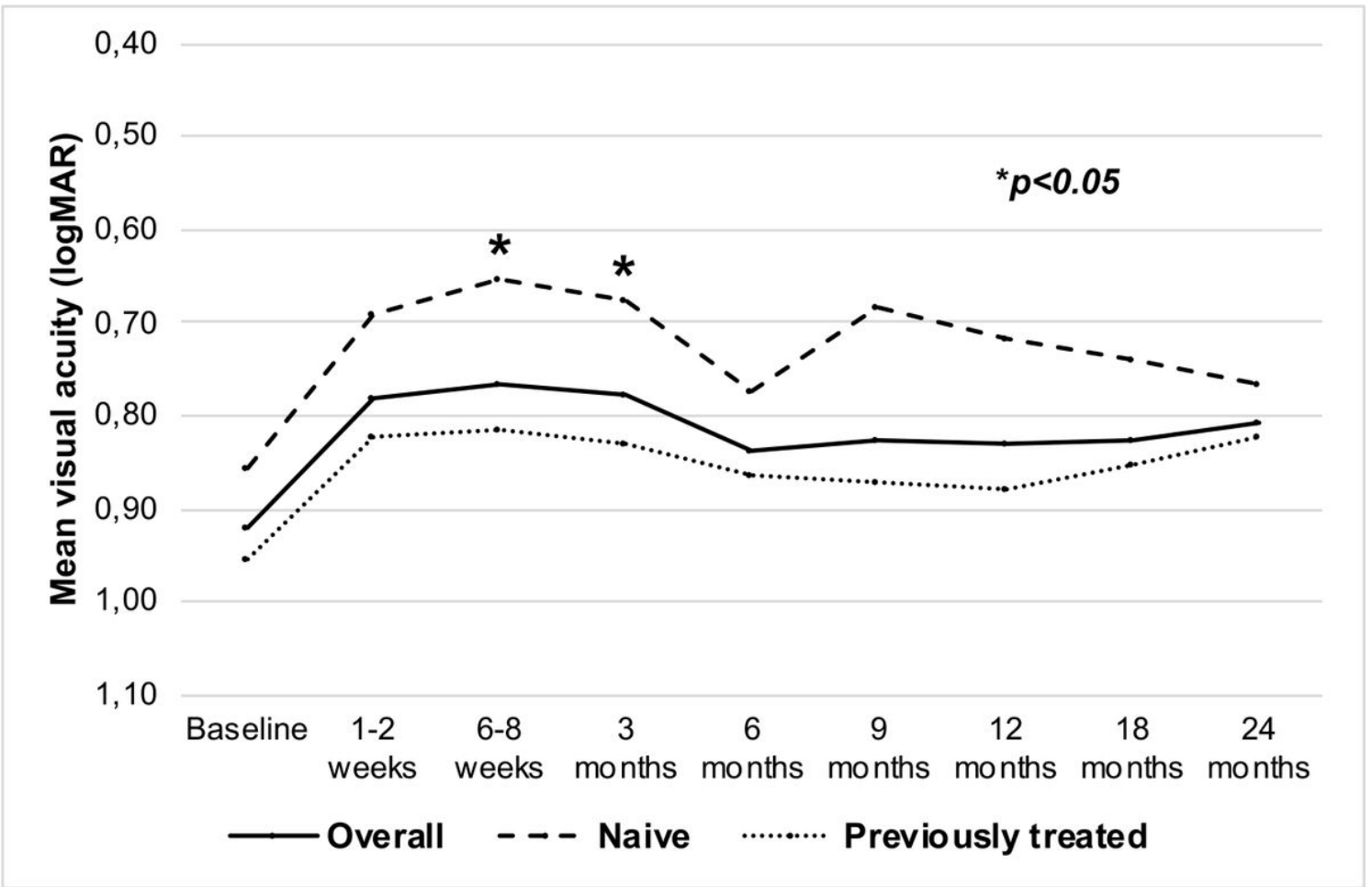


Figure 2

Visual acuity outcomes. Evolution of mean visual acuity from baseline to 24 months in the overall cohort (solid line), naïve eyes (stripped line) and previously treated eyes (dotted line). Significant differences were observed between naïve and previously treated eyes at 6-8 weeks and 3 months timepoints (*p<0.05).

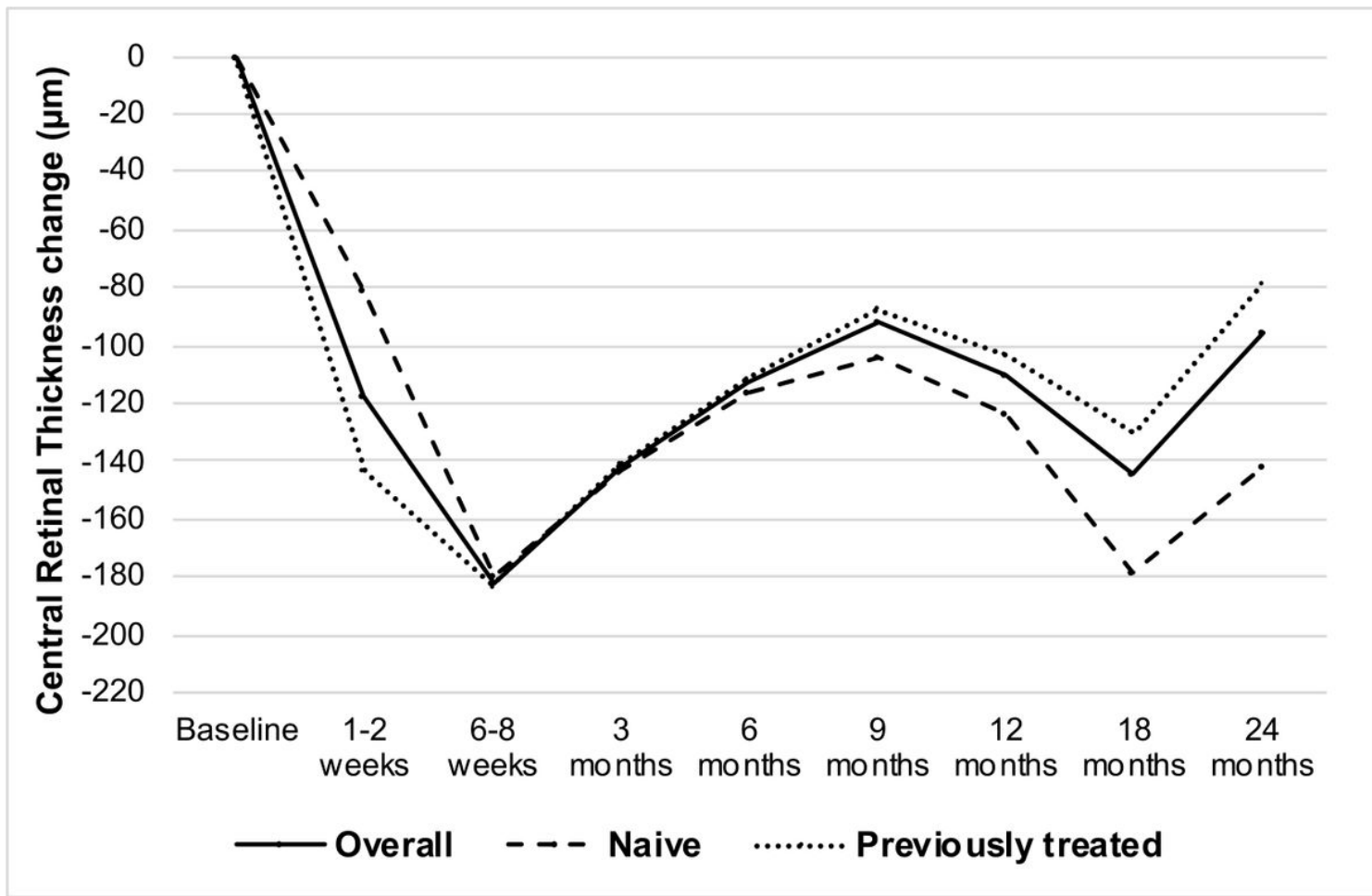


Figure 3

Anatomical outcomes. Evolution of mean central retinal thickness change from baseline to 24 months in the overall cohort (solid line), naïve eyes (stripped line) and previously treated eyes (dotted line). No significant differences were observed between naïve and previously treated eyes at any timepoint.

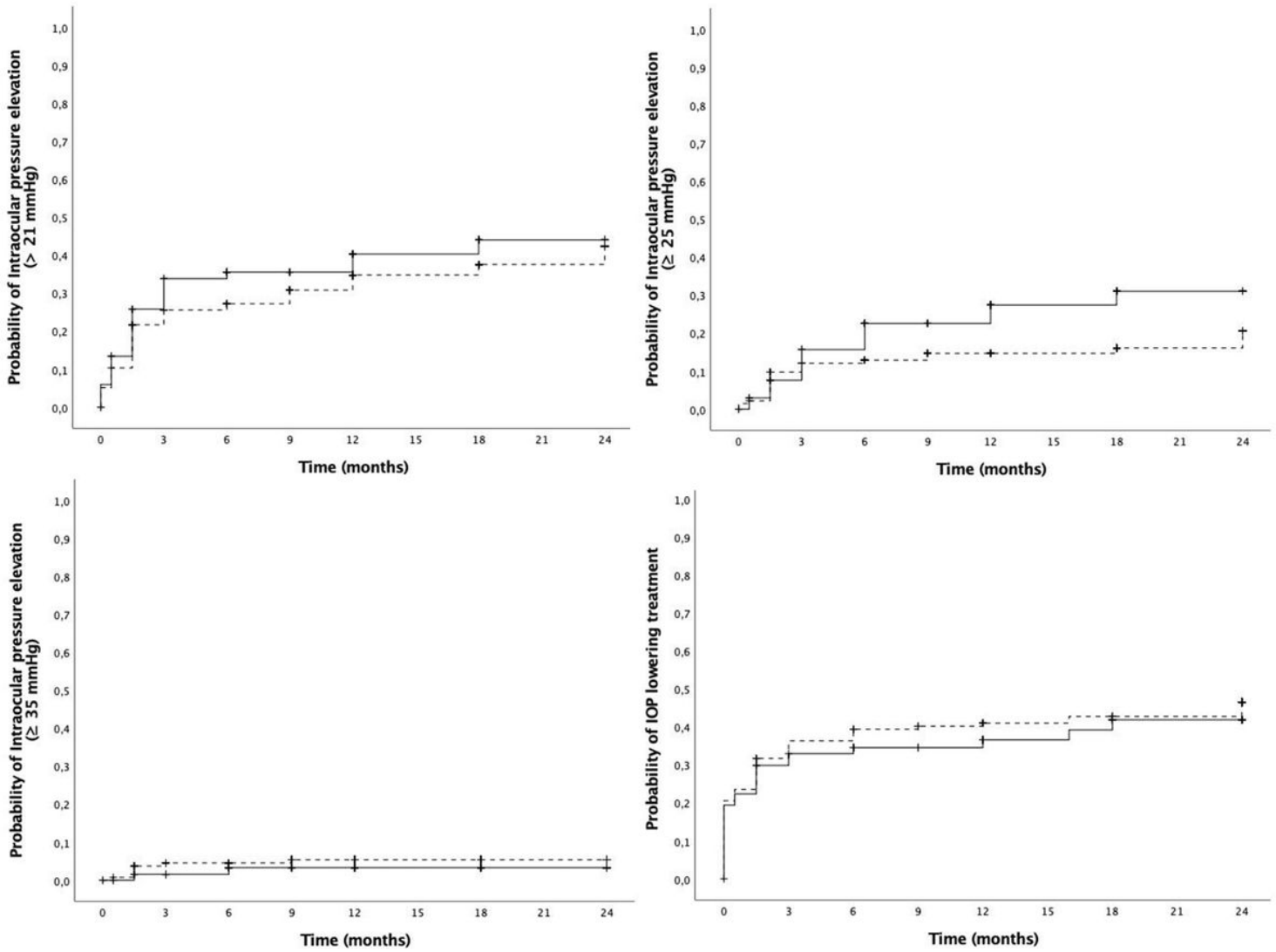


Figure 4

Intraocular pressure outcomes. Cumulative probability of different levels of intraocular pressure (IOP) elevations (top-left: >21mmHg, top-right: \geq 25mmHg, bottom-left: \geq 35mmHg) and IOP lowering treatment requirement (bottom-right). No significant differences were observed between naïve and previously treated eyes for any item at any timepoint.