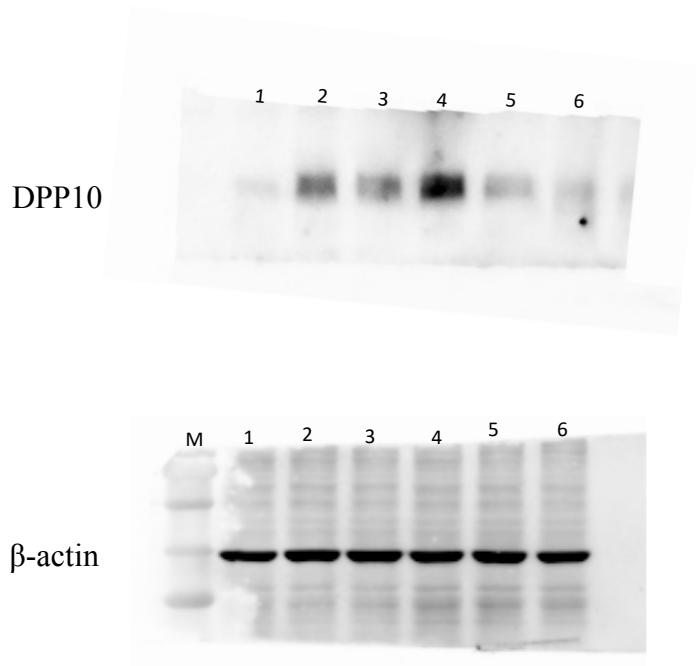


Figure 2R



Lane 1, pcDNA3.1 in SPC-A1 cells

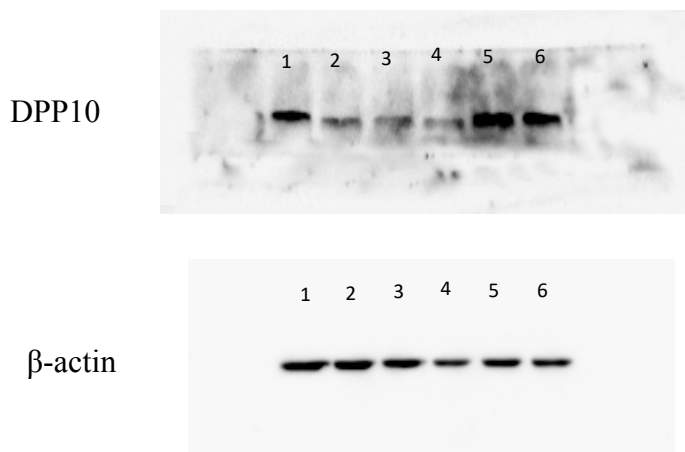
Lane 2, pcDNA3.1-DPP10-AS1 in SPC-A1 cells

Lane 3, pcDNA3.1 in NCI-H1299 cells

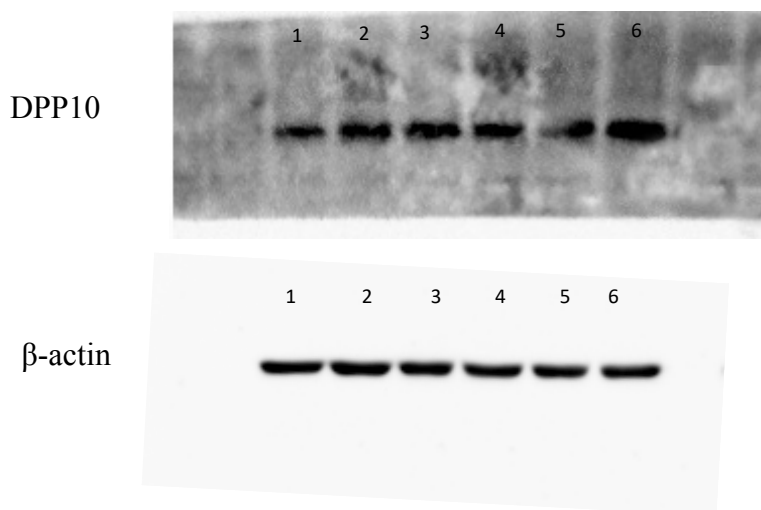
Lane 4, pcDNA3.1-DPP10-AS1 in NCI-H1299 cells

Lane 5-6, DPP10 protein in normal mouse tissue (not shown in Figure 2R)

Figure 4C and 4E



- Lane 1, siNC in SPC-A1 cells
- Lane 2, siDPP10-AS1 in SPC-A1 cells
- Lane 3, siNC in A549 cells (not shown in Figure 4C)
- Lane 4, siDPP10-AS1 in A549 cells (not shown in Figure 4C)
- Lane 5, siNC in NCI-H1299 cells
- Lane 6, siDPP10-AS1 in NCI-H1299 cells



- Lane 1, pcDNA3.1 in SPC-A1 cells
- Lane 2, pcDNA3.1-DPP10-AS1 in SPC-A1 cells
- Lane 3, pcDNA3.1 in A549 cells (not shown in Figure 4E)
- Lane 4, pcDNA3.1-DPP10-AS1 in A549 cells (not shown in Figure 4E)
- Lane 5, pcDNA3.1 in NCI-H1299 cells
- Lane 6, pcDNA3.1-DPP10-AS1 in NCI-H1299 cells

Figure 5D and Figure S2B

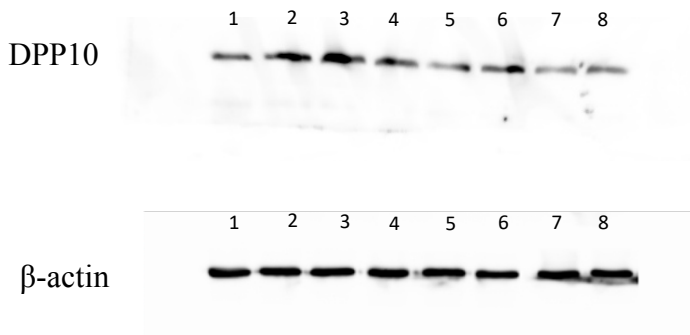


Figure 5D

Lane 1, BEAS-2B cells
Lane 2, SPC-A1 cells
Lane 3, NCI-H1299 cells
Lane 4, A 549 cells
Lane 5, LTEP-a-2 cells

Figure S2B (left)

Lane 6, siNC in SPC-A1 cells
Lane 7, siDPP10-1 in SPC-A1 cells
Lane 8, siDPP10-2 in SPC-A1 cells

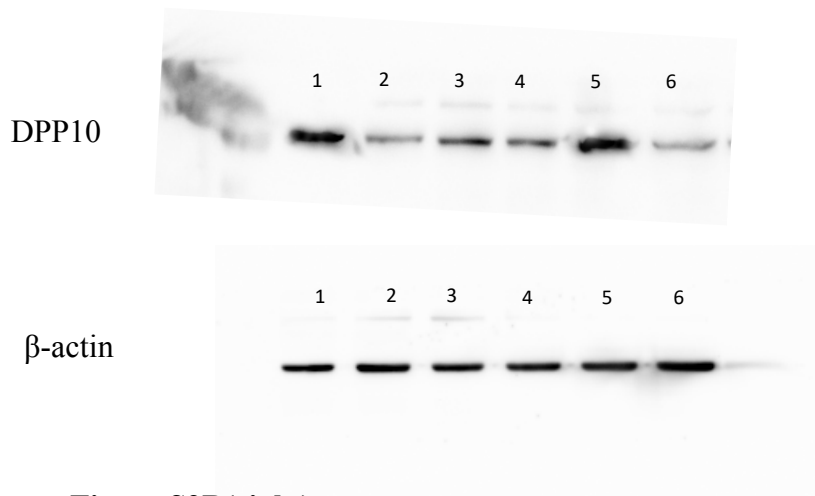


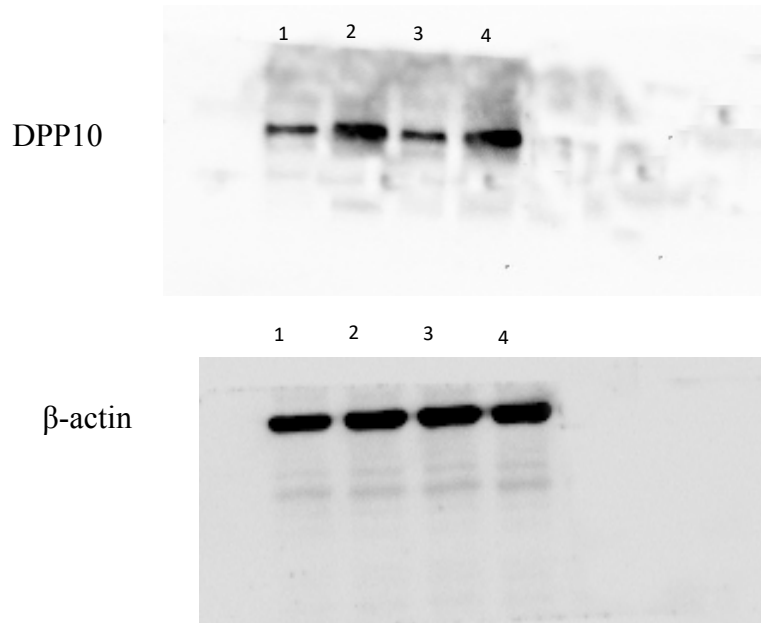
Figure S2B(right)

Lane 1, siNC in NCI-H1299 cells
Lane 2, siDPP10-1 in NCI-H1299 cells
Lane 3, siDPP10-2 in NCI-H1299 cells

Line 4-6 not shown in any figure

Lane 4, siNC+pcDNA3.1 in NCI-H1299 cells
Lane 5, siNC+ pcDNA3.1-DPP10-AS1 in NCI-H1299 cells
Lane 6, siDPP10-1+ pcDNA3.1-DPP10-AS1 in NCI-H1299 cells

Figure S2D



Lane 1, pcDNA3.1 in SPC-A1 cells

Lane 2, pcDNA3.1-DPP10-AS1 in SPC-A1 cells

Lane 3, pcDNA3.1 in NCI-H1299 cells

Lane 4, pcDNA3.1-DPP10-AS1 in NCI-H1299 cells