

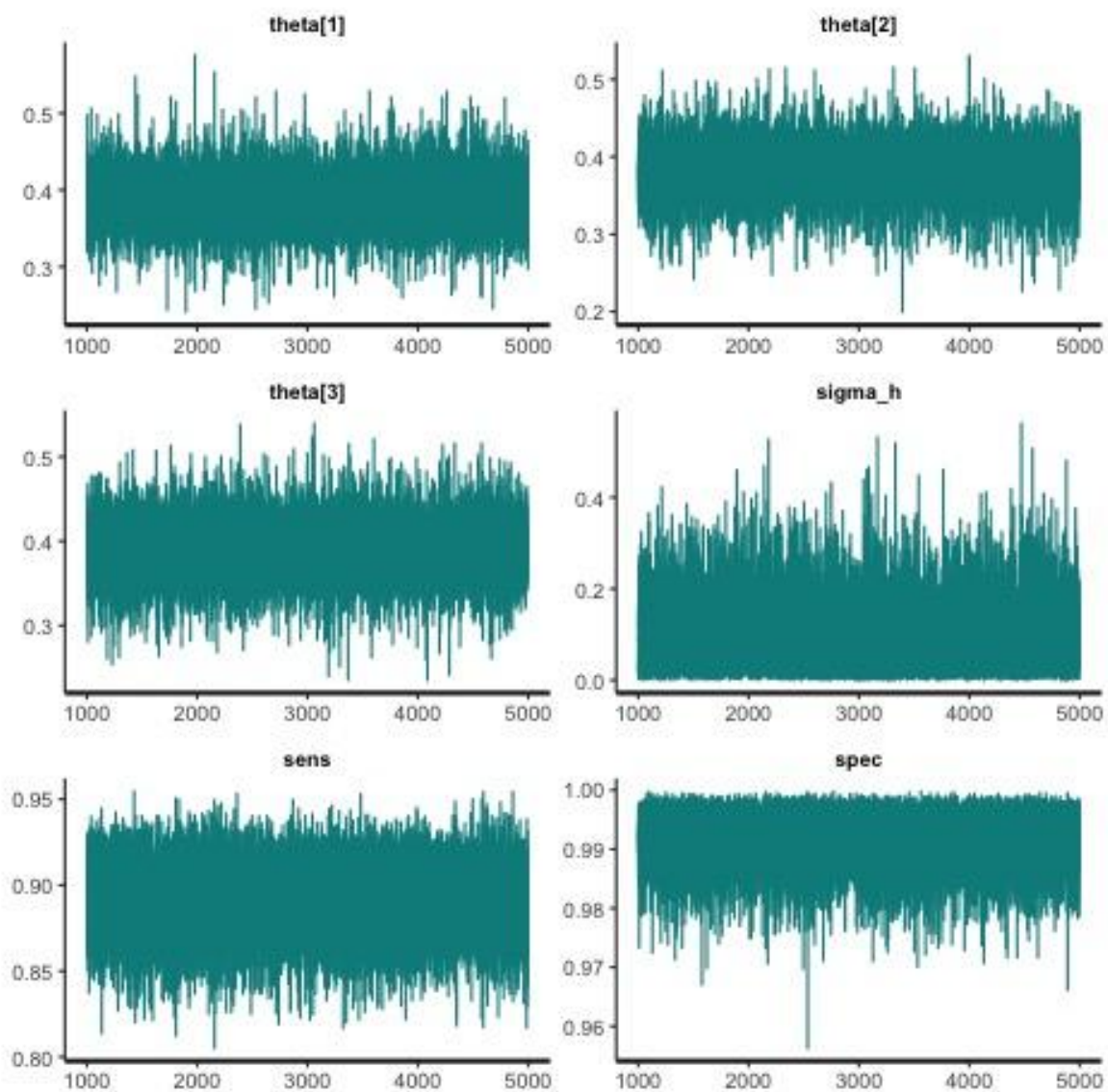
Supplementary Information for:

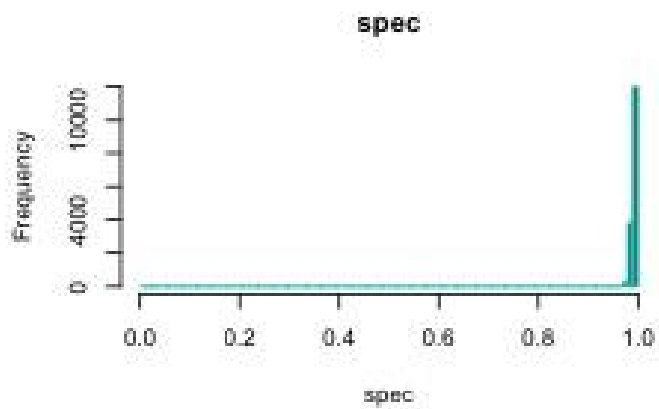
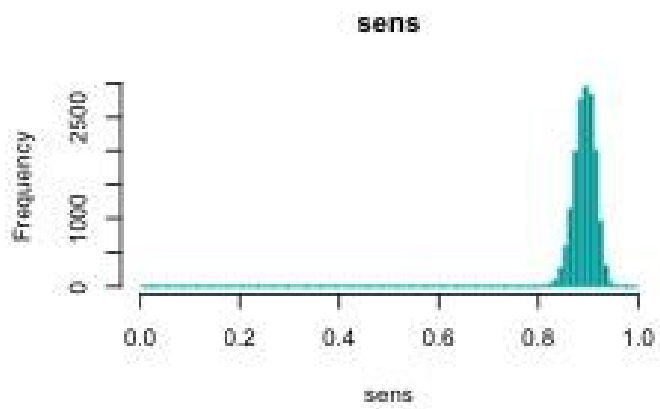
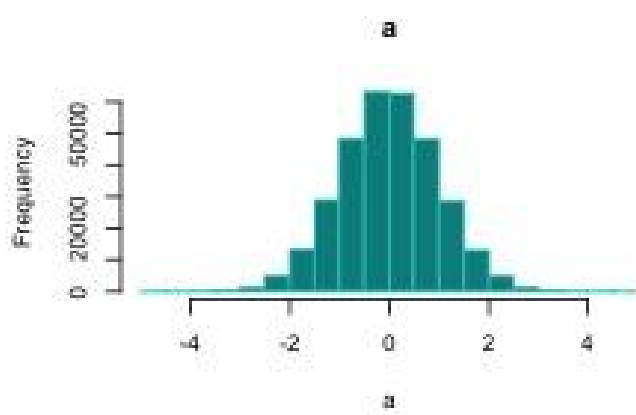
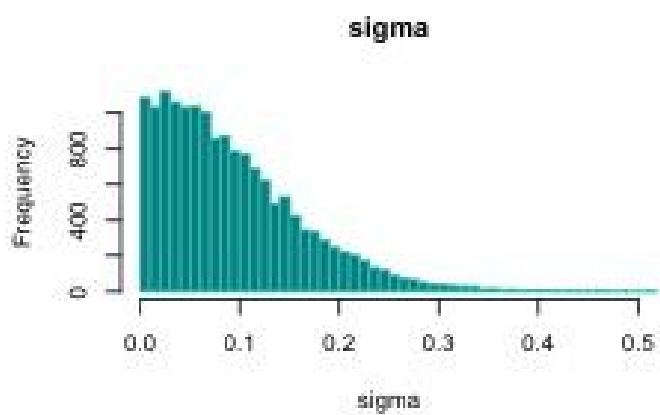
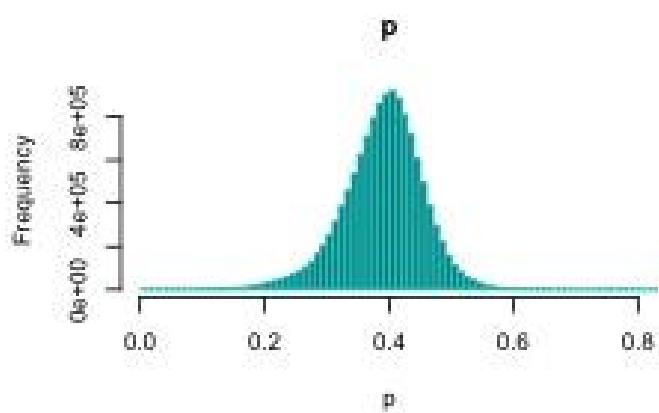
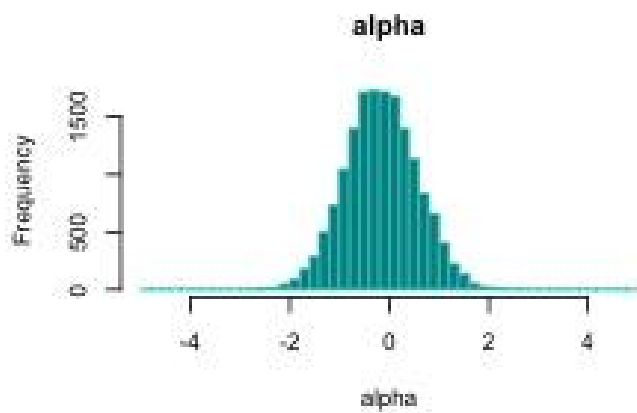
**Seroprevalence Of Covid-19 Among Health Workers In  
The Kathmandu Valley, Nepal: Results from SEVID-KaV Wave 1**

## Model Diagnostics

We assessed for convergence in our probabilistic model in Stan using a mix of visual other diagnostics parameters, including the rhat statistic, the number of effective sample sizes and the energy parameter.(1) Here, we present some of the visual diagnostics for the final hierarchical model with post-stratification, to demonstrate that the 4 chains of the Hamiltonian Monte Carlo simulation achieved convergence.

Post warm up trace plots show that the chains in the model have converged. Only select parameters are shown here.





## Bibliography

1. Betancourt M. An Introduction to Stan [Internet]. 2020 [cited 2021 Jun 6]. Available from: [https://betanalpha.github.io/assets/case\\_studies/stan\\_intro.html](https://betanalpha.github.io/assets/case_studies/stan_intro.html)