

Supplemental data

Figure S1. Additional representative images of the histological changes of lungs and brains from the newborn mouse pups born to the dames injected with anti-coronavirus spike antibodies. Lung branch and alveolar epithelial hyperplasia and thickening and hemorrhage, as well as infiltration of inflammatory cells of brains are shown.

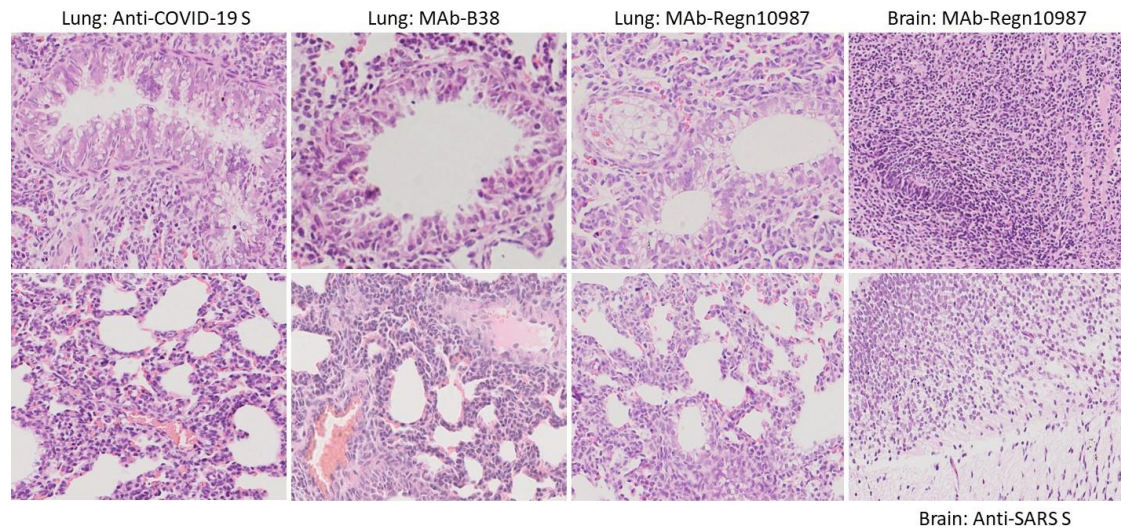


Figure S2. Additional representative images of the histological changes of kidneys, brains and hearts from the mouse pups born to the dames injected with anti-coronavirus spike antibodies. Kidney inflammation, brain and heart hemorrhages are shown.

