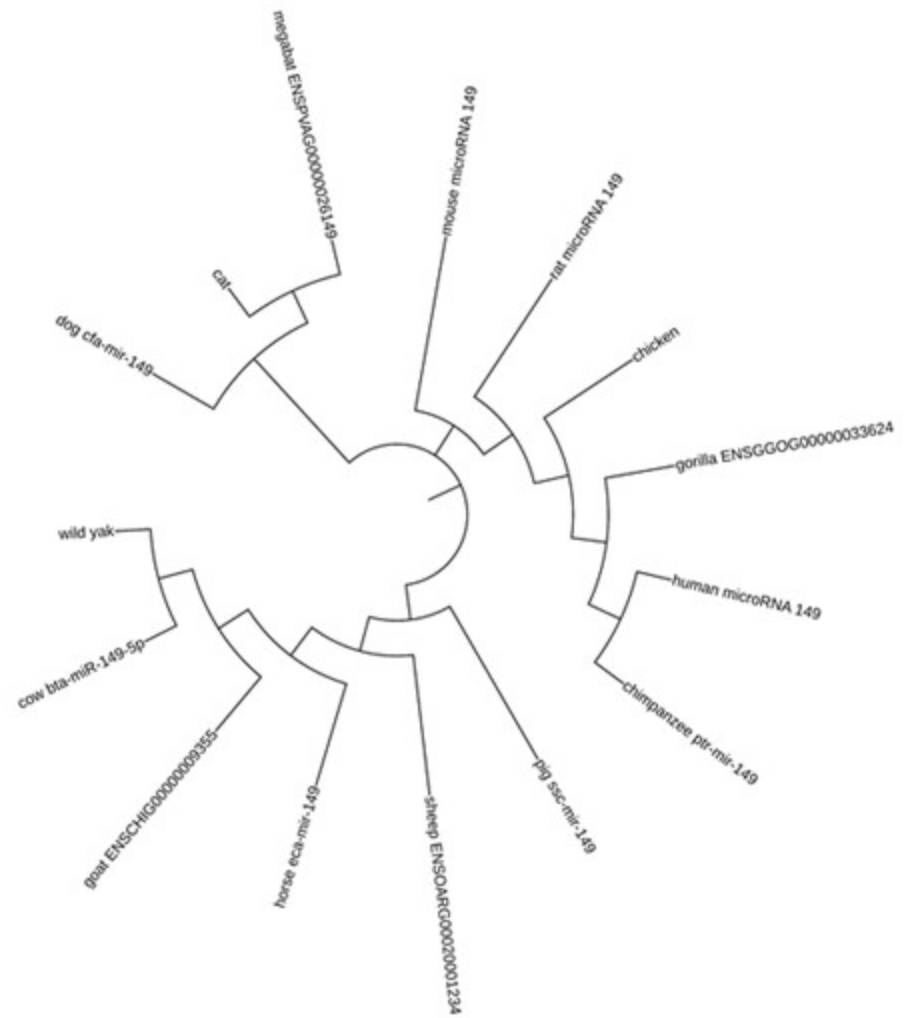


bta-miR-24-3p



bta-miR-149-5p

Supplementary Figure 4a-c. Evolutionary analysis of the six miRNAs generated from the multiple sequence alignment using MEGA-X and iTOL(A-C); phylogenetic trees of bta-miR-24-3p and bta-miR-149-5p and their corresponding gene in the 15 other species (A); phylogenetic trees of bta-miR-185 and bta-miR-223 (B); phylogenetic trees of bta-miR-328 and bta-miR-874 (C).