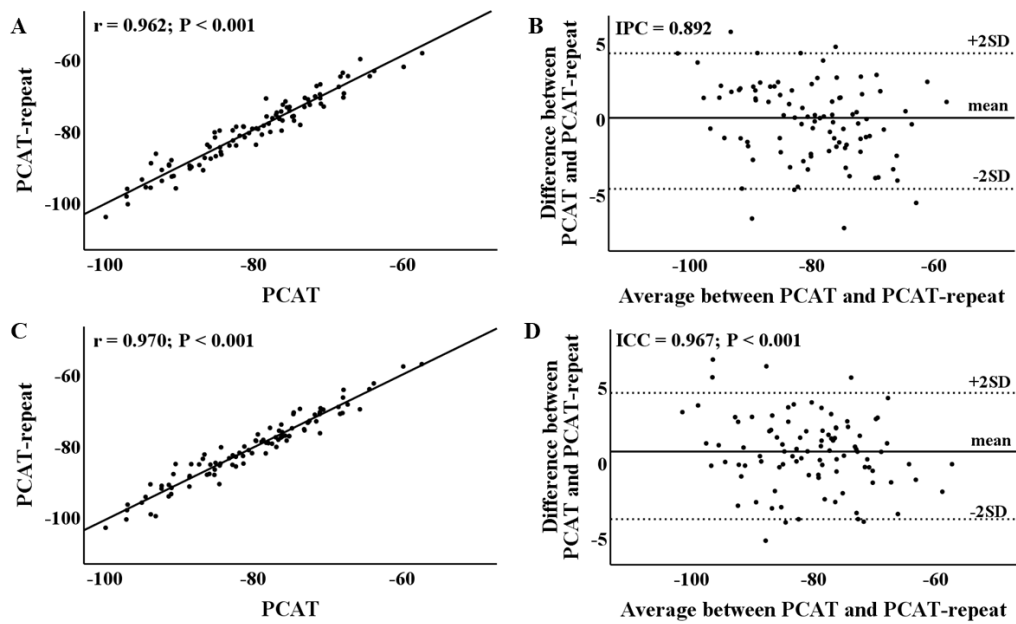
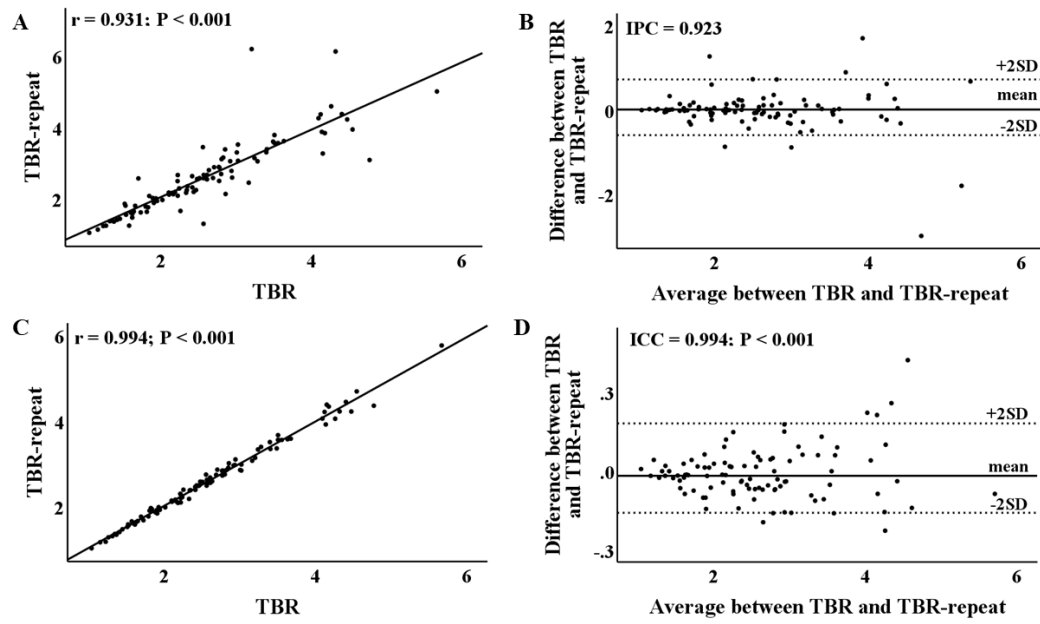


## Supplemental Appendix



**Supplemental Figure S1.** Repeatability analyses. For the inter-observer variability of the PCAT and PCAT-repeat, the scattergrams (A) and the Bland-Altman plots (B) demonstrating the line of equality, along which the points should lie for perfect agreement. For the intra-observer variability of the PCAT and PCAT-repeat, the scattergrams (C) and the Bland-Altman plots (D) demonstrating the line of equality, along which the points should lie for perfect agreement. PCAT = peri-coronary adipose tissue.



**Supplemental Figure S2.** Repeatability analyses. For the inter-observer variability of the coronary TBR and coronary TBR-repeat, the scattergrams (A) and the Bland-Altman plots (B) demonstrating the line of equality, along which the points should lie for perfect agreement. For the intra-observer variability of the coronary TBR and coronary TBR-repeat, the scattergrams (C) and the Bland-Altman plots (D) demonstrating the line of equality, along which the points should lie for perfect agreement. TBR = tissue-to-background ratio.

**Supplemental Table S1** Comparison of clinical characteristics in patients with higher and lower coronary TBR

	Patients with higher TBR <sub>Coronary</sub> (Group 1) (n = 50)	Patients with lower TBR <sub>Coronary</sub> (Group 2) (n = 50)	P-value
<i>Baseline characteristics</i>			
Age, years	67.00 (63.50 - 69.00)	60.00 (54.00 - 66.00)	0.002
Men, n (%)	39 (78.00)	35 (70.00)	0.35
BMI, kg/m <sup>2</sup>	24.84 (23.05 - 26.87)	24.97 (23.18 - 27.57)	0.53
LVEF, %	58.00 (45.00 - 65.00)	60.00 (50.50 - 65.00)	0.39
Systolic blood pressure, mmHg	130.00 (119.00 - 145.00)	128.50 (120.00 - 140.75)	0.49
Diastolic blood pressure, mmHg	74.00 (66.00 - 78.50)	73.00 (68.00 - 79.00)	0.83
NYHA class III/IV, n (%)	34 (68.00)	28 (56.00)	0.21
Diabetes, n (%)	18 (36.00)	18 (36.00)	1.00
Hyperlipidemia, n (%)	29 (58.00)	27 (54.00)	0.68
Hypertension, n (%)	36 (72.00)	34 (68.00)	0.66
Smoker, n (%)	29 (58.00)	26 (52.00)	0.54
Family history of CAD, n (%)	19 (38.00)	16 (32.00)	0.53
<i>Serum biomarkers</i>			
High-density lipoprotein, mmol/L	0.96 (0.86 - 1.14)	0.96 (0.85 - 1.11)	0.53
Low-density lipoprotein, mmol/L	2.14 (1.83 - 2.86)	2.23 (1.74 - 3.07)	0.94
High-sensitivity C-reactive protein, mg/L	2.54 (1.00 - 20.09)	2.44 (0.80 - 7.53)	0.40
Interleukin-6, pg/mL	6.60 (4.90 - 8.40)	4.90 (3.35 - 8.55)	0.12
Tumor necrosis factor alpha, pg/mL	9.30 (7.55 - 13.00)	8.95 (7.20 - 23.18)	0.89
Creatinine clearance rate, mL/min	85.30 (73.00 - 98.22)	91.50 (67.25 - 103.00)	0.61
Troponin I, ng/mL	0.01 (0.00 - 0.07)	0.00 (0.00 - 0.03)	0.022
<i>Medications, n (%)</i>			
Aspirin	42 (84.00)	38 (76.00)	0.66
Statins	43 (86.00)	42 (84.00)	0.45
ACEIs/ARBs	16 (32.00)	15 (30.00)	1.00
Beta-blocker	37 (74.00)	36 (72.00)	0.71
<i>CT</i>			
Coronary artery calcium score	1495.20 (619.80 - 2225.40)	273.75 (116.73 - 1198.18)	<0.001
PCAT	-75.89 (-79.07 - -70.06)	-84.54 (-90.21 - -79.46)	<0.001
<i>PET/CT</i>			
TBR <sub>Aorta</sub>	2.60 (2.10 - 3.81)	2.13 (1.86 - 2.54)	0.001

Data are presented as median (25th to 75th percentile), n (%).

ACEI = angiotensin-converting enzyme inhibitor; ARB = angiotensin receptor blocker; BMI = body-mass index; CAD = coronary artery disease; CT = computed tomography; LVEF = left ventricular ejection function; NYHA = New York Heart Association; PCAT = peri-coronary adipose tissue; PET/CT = positron emission tomography/computed tomography; TBR = tissue-to-background ratio.