

Additional files 2: Figures S 1- S 8. Additional figures with important information interest

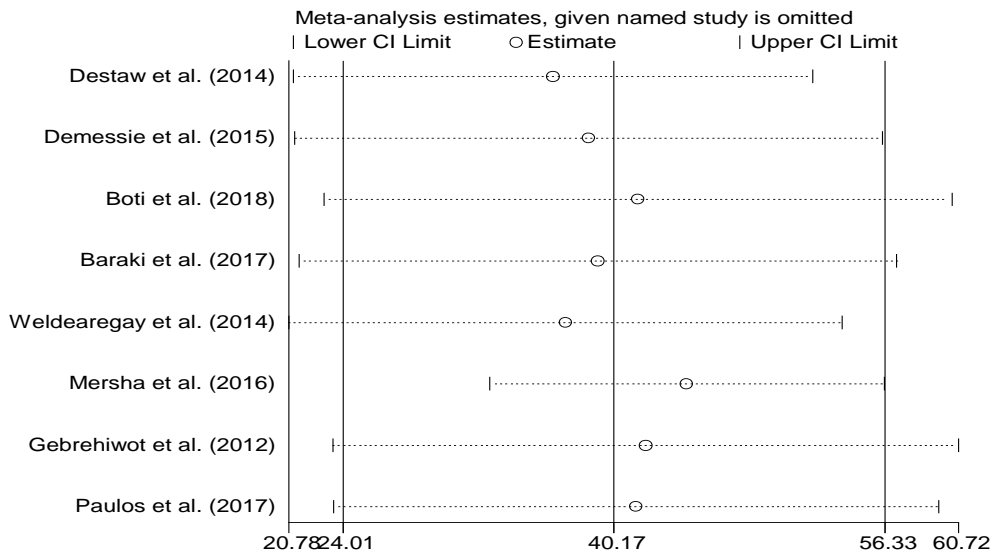


Figure S1: Sensitivity analysis: Showed that all estimates are within 95% confidence interval which implies there was no sensitive (very small or very large estimate).

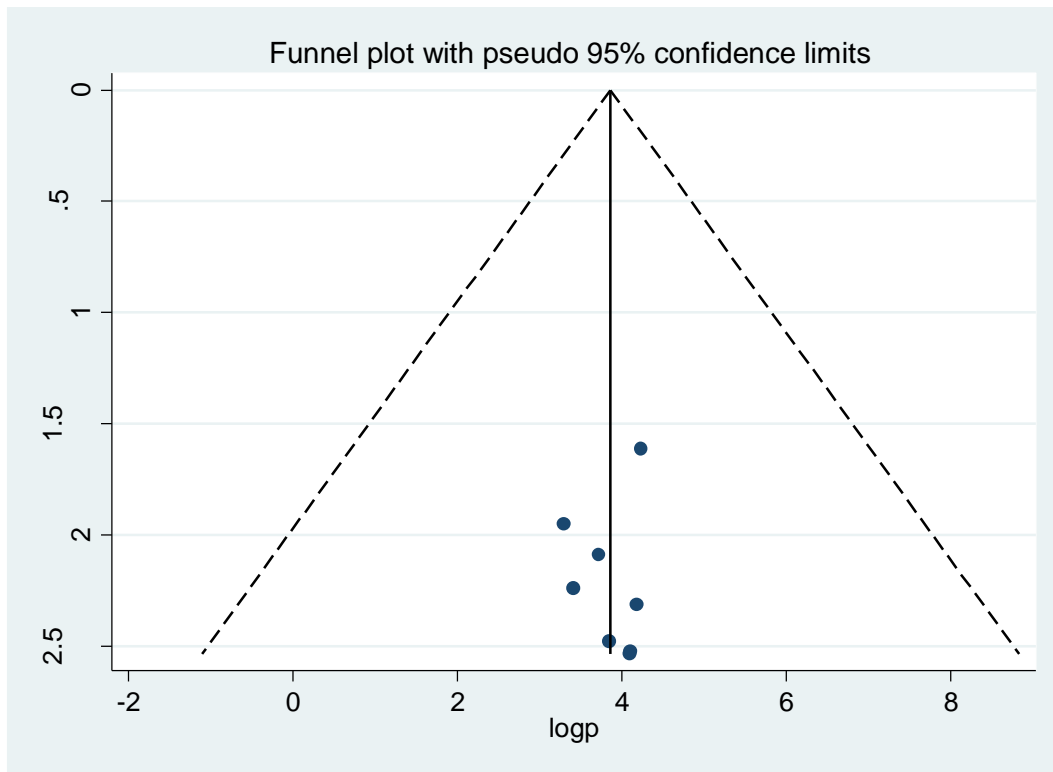


Figure S2: Funnel plot to assess the presence of publication bias for the studies included in overall analysis of male involvement in birth preparedness and complication readiness: The plot showed that there is no bias.

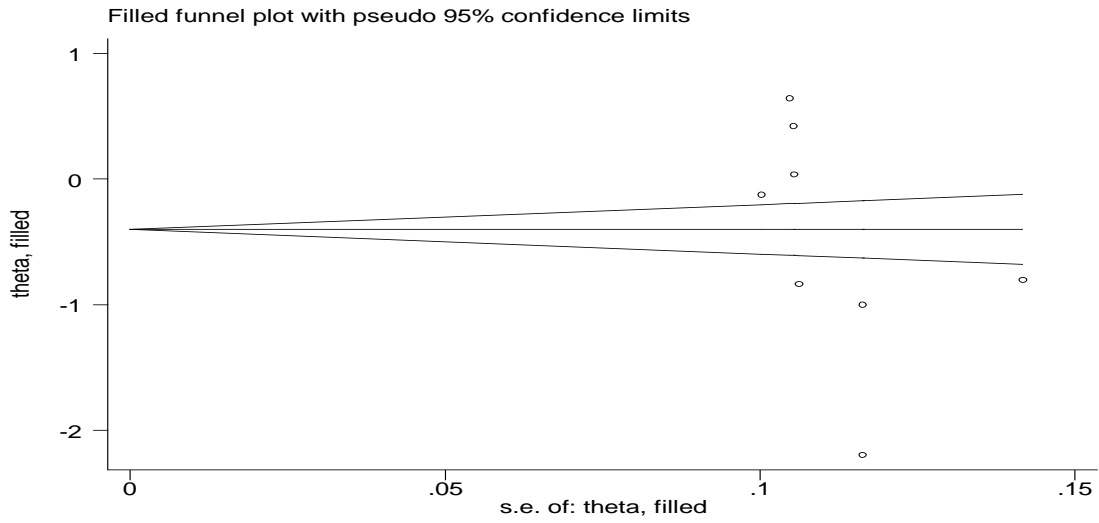


Figure S3: Filled and trim analysis for the included studies in overall male involvement

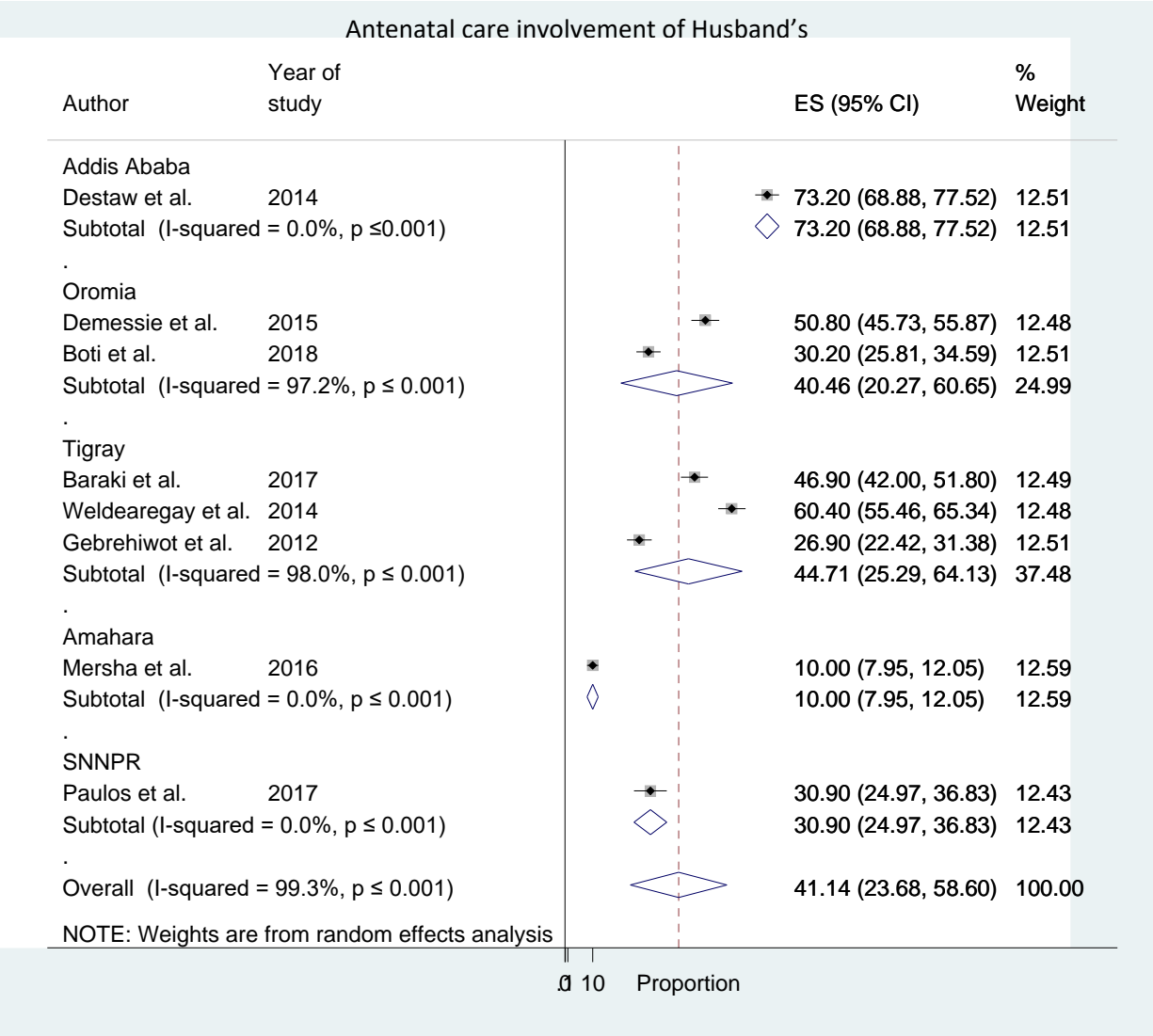


Figure S4: Subgroup analysis of male involvement during antenatal care (ANC) by region in Ethiopia

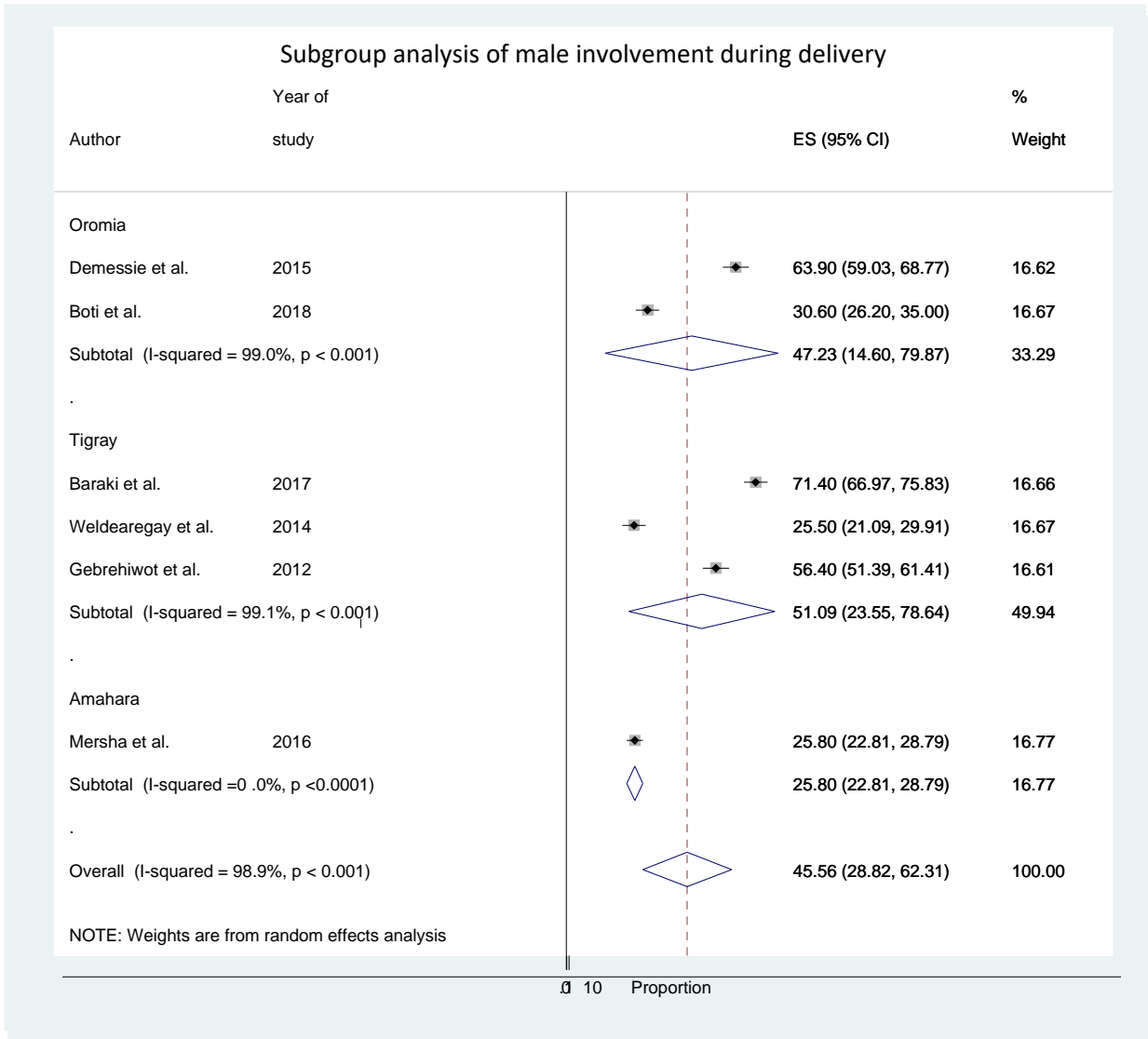


Figure S5 : subgroup Meta-analysis (forest plot) of proportion of male involvement during delivery in Ethiopia

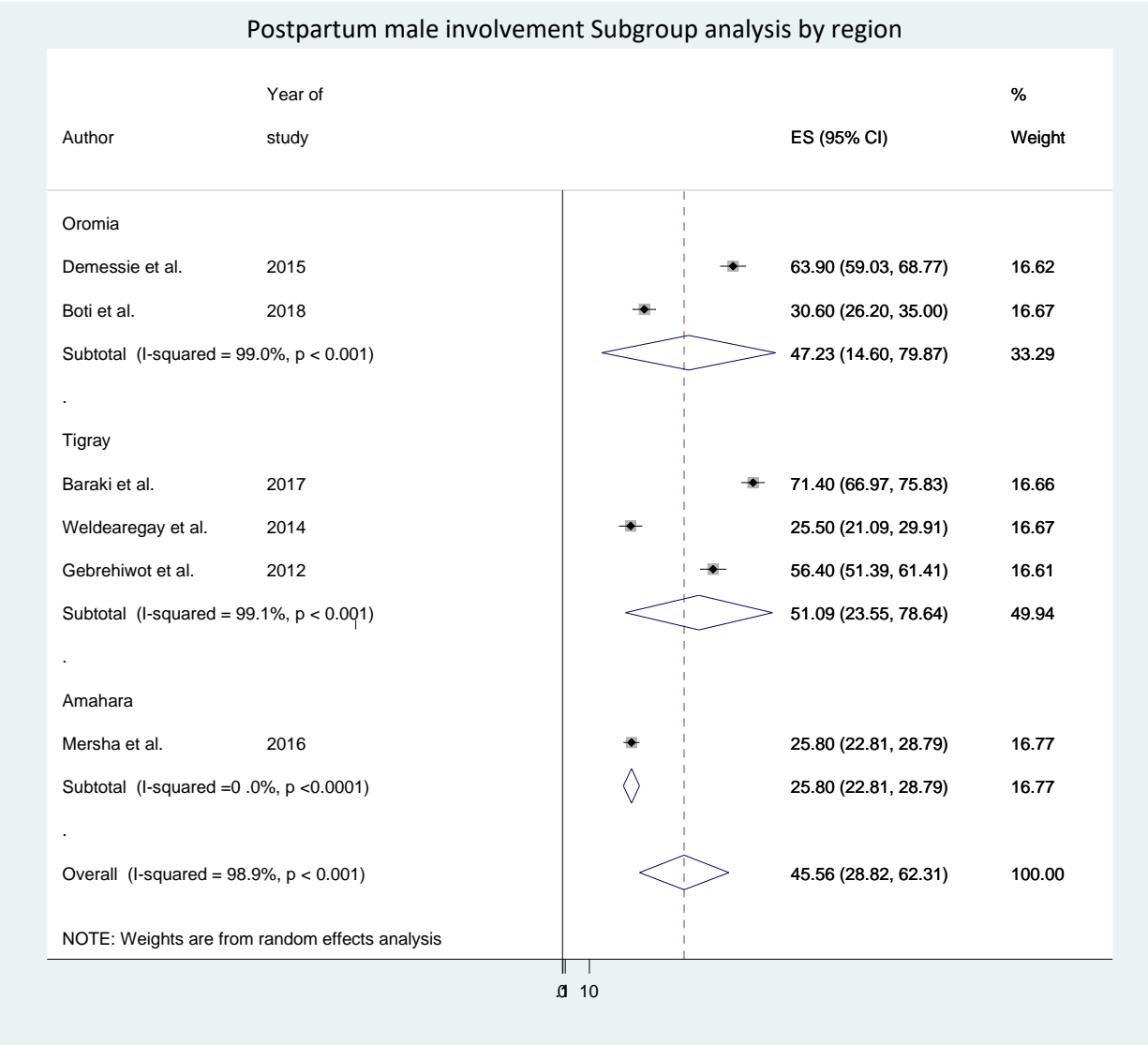


Figure S 6 : Subgroup analysis of male involvement by region during post-partum in Ethiopia

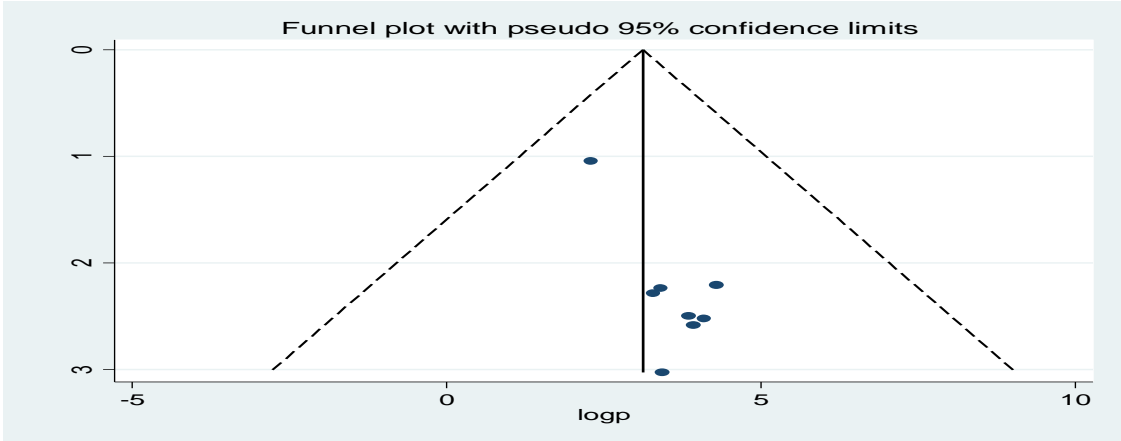


Figure S 7: Funnel plot of the included studies in the meta-analysis of male involvement during antenatal care

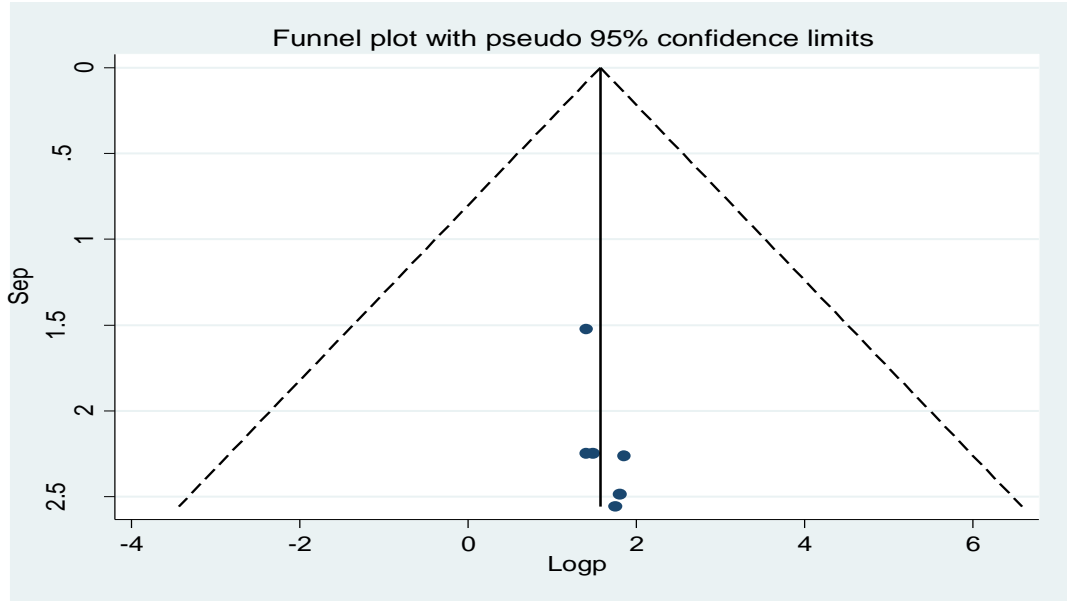


Figure S8: Funnel plot of studies included in delivery and post-partum