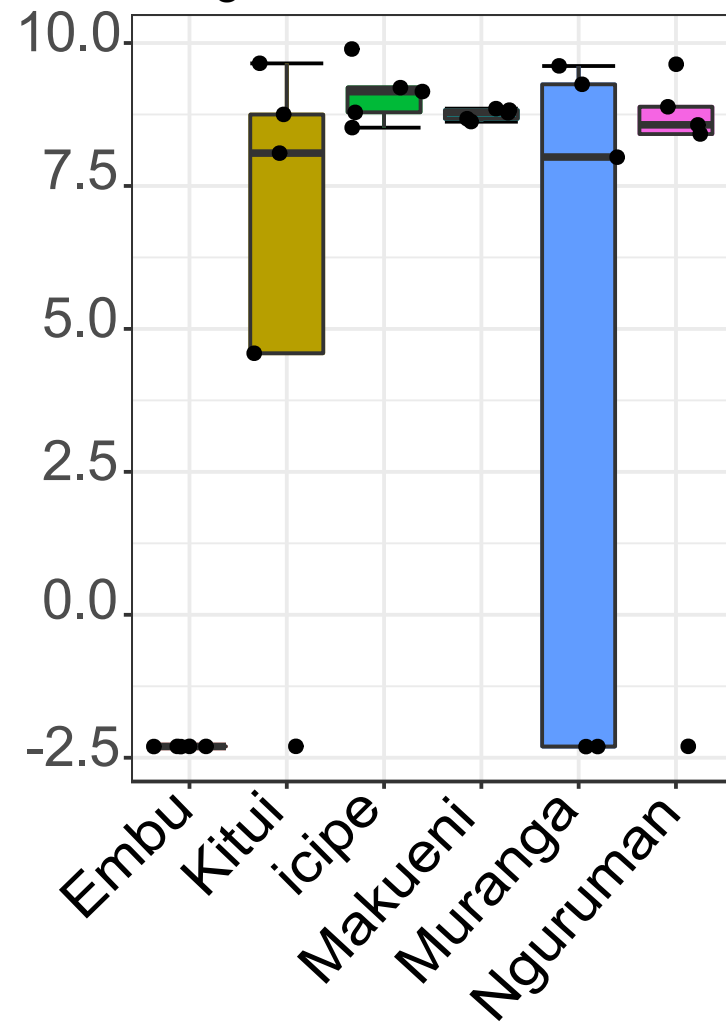


A.

Enterobacter

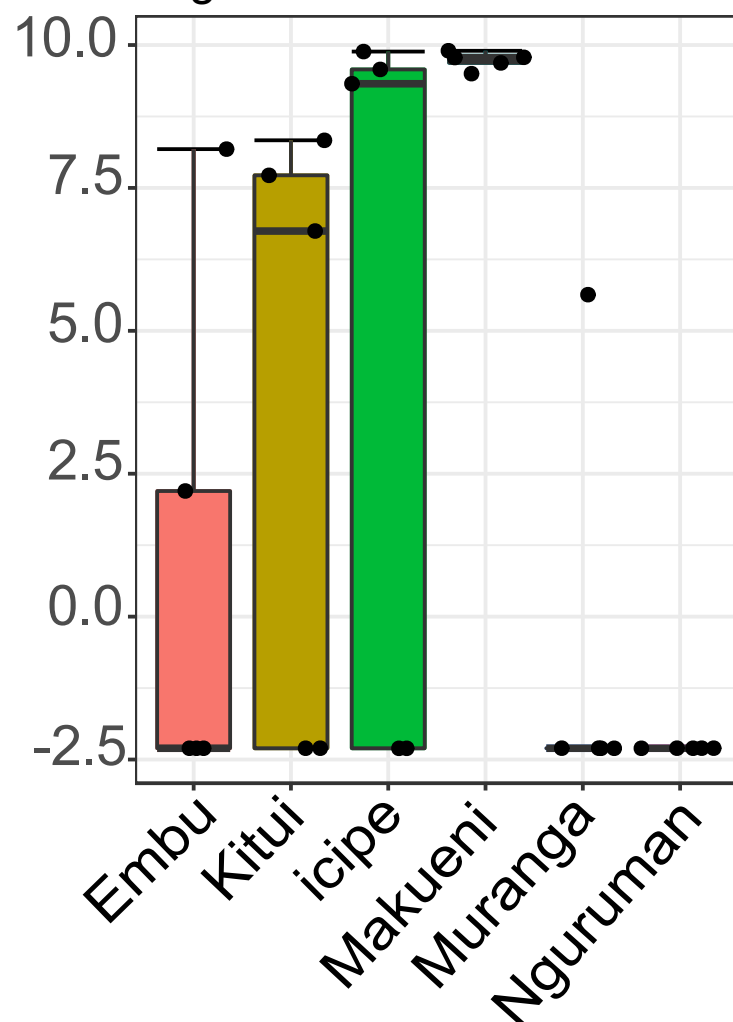
Log-transformed Count

 $p < 0.001$, FDR = 5.50E-36

B.

Klebsiella

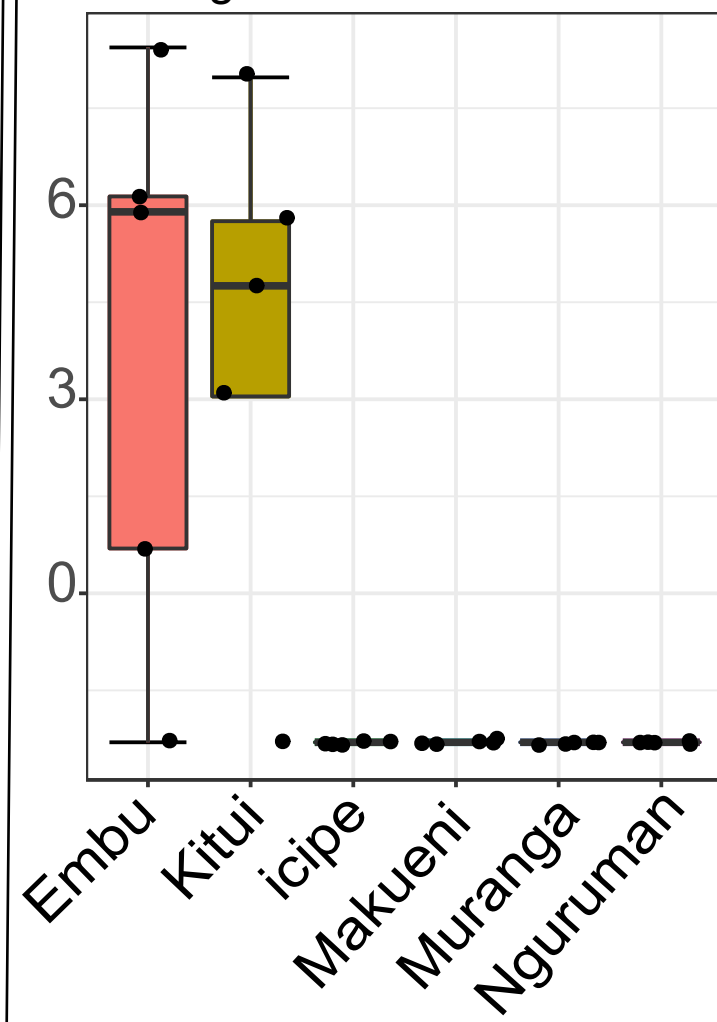
Log-transformed Count

 $p < 0.001$, FDR = 2.48E-16

C.

Serratia

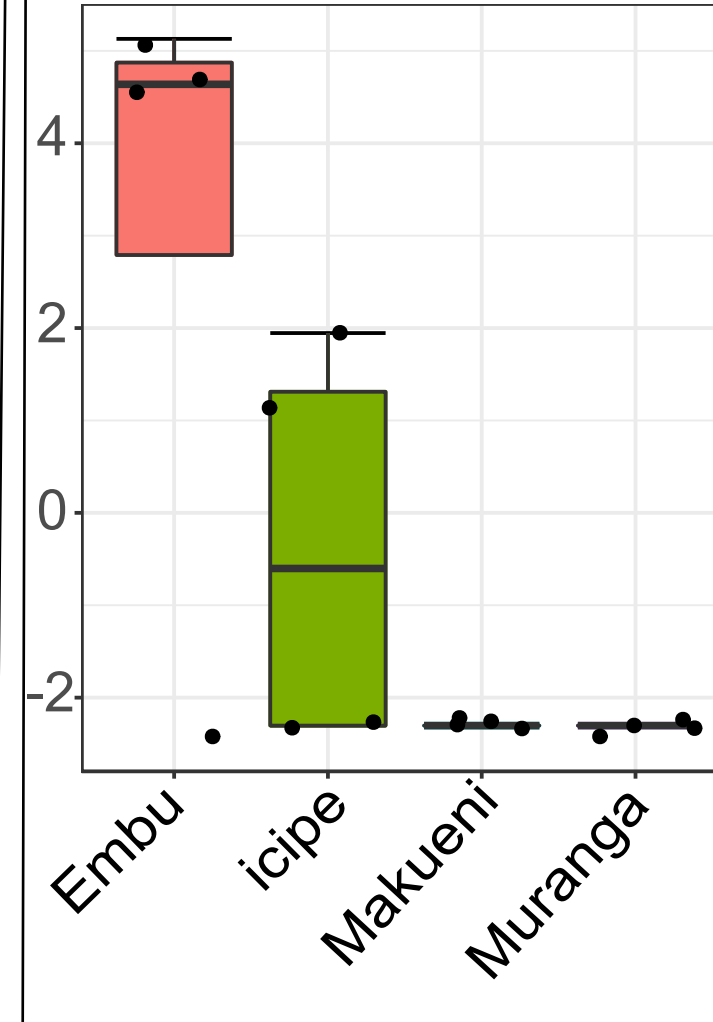
Log-transformed Count

 $p < 0.001$, FDR = 3.45E-12

D.

Lactobacillus

Log-transformed Count

 $p = 0.002$, FDR = 0.031