

Figure S1. G3/G4 toxicity analysis for NIVO1+IPI3 schedule

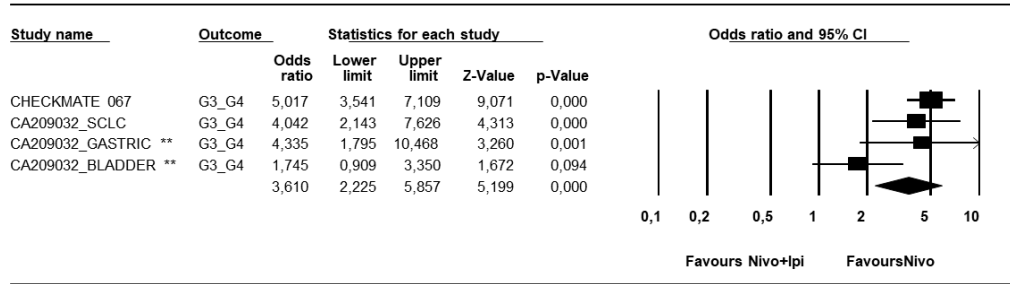


Figure S1 shows G3/G4 toxicity analysis for NIVO1+IPI3 schedule. Nivolumab had a large benefit compared to NIVO1+IPI3 combination. Random effect model –Significant heterogeneity ( $P=0.049$ ). NIVO1/IPI3: nivolumab 1 mg/kg and ipilimumab 3 mg/kg.

Figure S2. G3/G4 toxicity analysis for NIVO3+IPI1 schedule

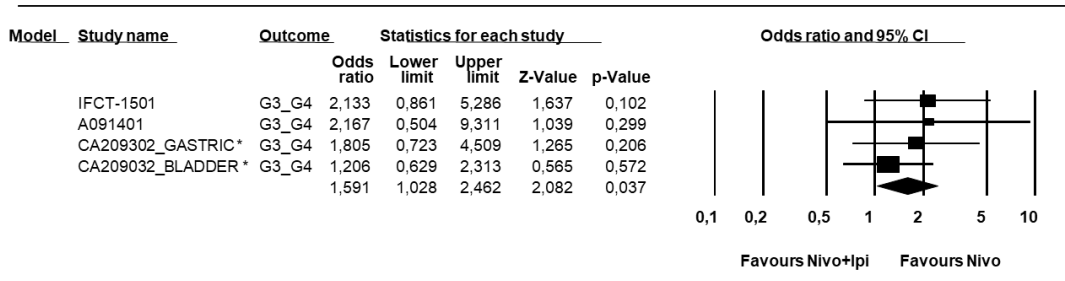


Figure S2 shows G3/G4 toxicity analysis for NIVO3+IPI1 schedule. Nivolumab resulted less toxic compared to NIVO3+IPI1 combination. Fixed effect model –Heterogeneity not significant ( $P=0.72$ ). NIVO3/IPI1: nivolumab 3 mg/kg and ipilimumab 1 mg/kg.