

Ppia is the most stable housekeeping gene for qRT-PCR normalization in kidney tissues of Pkd1 deficient mouse models

Juan J Muñoz

Universidade Federal de São Paulo

Ana C Anauate

Universidade Federal de São Paulo

Andressa G Amaral

University of São Paulo School of Medicine

Frederico M Ferreira

University of São Paulo School of Medicine

Elieser H Watanabe

University of São Paulo School of Medicine

Renata Meca

Universidade Federal de São Paulo

Milene S Ormanji

Universidade Federal de São Paulo

Mirian A Boim

Universidade Federal de São Paulo

Luiz F Onuchic

University of São Paulo School of Medicine

Ita Pfeferman Heilberg (✉ ita.heilberg@gmail.com)

Universidade Federal de São Paulo

Research Article

Keywords: Actb, Actg1, B2m, Gapdh, Hprt, Pgam1, Ppia, ADPKD, GANAB, DNAJB11

Posted Date: May 28th, 2021

DOI: <https://doi.org/10.21203/rs.3.rs-551245/v1>

License: © ⓘ This work is licensed under a Creative Commons Attribution 4.0 International License. [Read Full License](#)

Abstract

Autosomal Dominant Polycystic Kidney Disease (ADPKD) is the most common inherited renal disorder, characterized by renal cyst development leading to end-stage renal disease. Although the appropriate choice of suitable reference is critical for quantitative RNA analysis, no comparison of frequently used “housekeeping” genes is available. Here, we determined the validity of 7 candidate housekeeping genes (*Actb*, *Actg1*, *B2m*, *Gapdh*, *Hprt*, *Pgam1* and *Ppia*) in kidney tissues from mouse models orthologous to ADPKD, including a cystic mice (CY) 10–12 weeks old (*Pkd1^{flox/flox}:Nestin^{cre}/Pkd1^{flox/-}:Nestin^{cre}*, n = 10) and non-cystic (NC) controls (*Pkd1^{flox/flox}/Pkd1^{flox/-}*, n = 10), *Pkd1*-haploinsufficient (HT) mice (*Pkd1^{+/-}*, n = 6) and wild-type (WT) controls (*Pkd1^{+/+}*, n = 6) and a severely cystic (SC) mice 15 days old (*Pkd1^{V/V}*, n = 7) and their controls (CO, n = 5). Gene expression data were analyzed using six distinct statistical softwares. The estimation of the ideal number of genes suggested the use of *Ppia* alone as sufficient, although not ideal, to analyze groups altogether. *Actb*, *Hprt* and *Ppia* expression profiles were correlated in all samples. *Ppia* was identified as the most stable housekeeping gene, while *Gapdh* was the least stable for all kidney samples. *Stat3* expression level was consistent with upregulation in SC compared to CO when normalized by *Ppia* expression. In conclusion, present findings identified *Ppia* as the best housekeeping gene for CY + NC and SC + CO groups, while *Hprt* was the best for the HT + WT group.

Introduction

Autosomal dominant polycystic kidney disease (ADPKD) is manifested by bilateral development of multiple fluid-filled epithelial-derived cysts.^{1 2} It is the most common Mendelian disorder of the kidneys, affecting 3–5:10,000 people worldwide³ and the leading monogenic cause of end-stage kidney disease.⁴ Mutations in the *PKD1* gene account for ~ 78% of the affected families while mutations in *PKD2* are detected in ~ 15% of them,^{5 6} with the remaining ones being genetically unresolved or associated with rare mutations in the *GANAB* and *DNAJB11* loci.⁷

The elucidation of *PKD1/PKD2*-related biology has allowed major steps toward the understanding of ADPKD pathogenesis and the development of diagnostic tools and biomarkers.⁸ The significant number of abnormally functioning pathways involved in the disease pathophysiology, in turn, opened a number of tracks to develop potentially specific therapies. In addition to eGFR, the development of progression and prognostic markers has been also essential to guide clinical decisions in ADPKD. The classification based on total kidney volume growth⁹ has been widely used as well as the multiple criteria developed by Cornec-Le Gal et al.¹⁰ A combination of distinct biomarkers in a classifier including new biomarkers should further increase sensitivity and specificity.¹¹ The characterization and elucidation of specific strategic transcriptional profiles in turn, are expected to expand the options of therapeutic targets and the number of useful biomarkers for the disease.

Gene expression analysis plays a central role on identifying and characterizing pathways involved in specific phenotypes and diseases, potentially allowing elucidation of pathogenetic aspects and biomarker discovery. Reverse transcription quantitative polymerase chain reaction (RT-qPCR) is one of the most sensitive and reproducible means of quantifying RNA expression.^{12 13} Nonetheless, to provide accurate expression analysis this method requires expression normalization of the genes of interest to a reference gene that is stable and not affected by experimental conditions. In this scenario, expression stability is a major criterion for housekeeping gene selection.¹⁴ Reference genes are generally selected among housekeeping genes ubiquitously expressed and not transcriptionally affected by experimental conditions.¹³ While the expression of some housekeeping genes is constant under certain conditions, it can significantly change in some circumstances¹⁵ such as developmental stages, cell types and experimental conditions.^{14,16 17 13} It is therefore essential to characterize the suitability of candidate housekeeping genes to serve as appropriate internal mRNA expression controls under a given experimental condition where transcriptional effects are being investigated.

Glyceraldehyde-3-phosphate dehydrogenase (*Gapdh*), actin beta (*Actb*) and 18s ribosomal RNA (*18s rRNA*) are the most common reference genes. In kidney tissues of *Pkd1*-deficient mouse models, *Gapdh* has been the most often used endogenous control for gene expression studies.¹⁸ However, its reliability in this context has not been demonstrated yet. Moreover, the indiscriminate use of these genes may be inappropriate, as they have been implicated in disease processes¹⁹ including

ADPKD²⁰. Therefore, whether the expression of housekeeping genes is or is not stable in kidney tissues of *Pkd1*-deficient mouse models remains unknown. Determining the stability of genes known to be involved in ADPKD and used as housekeeping is particularly important.

To elucidate this issue and bring appropriate information to PKD experimental studies involving kidney transcriptional profiles, we aimed to identify the most stable housekeeping controls from a panel, namely seven candidate genes commonly used as endogenous controls in kidney disease, not limited to ADPKD: *Actb*, *Actg1*, *B2m*, *Gapdh*, *Hprt*, *Pgam1*, and *Ppia*, to be considered in kidney RT-qPCR obtained from *Pkd1*-deficient mouse models.

Results

Quantitative gene expression analyses: the first step to identify optimal housekeeping genes for RT-qPCR studies of renal tissue in *Pkd1*-deficient mouse models

We applied a stepwise strategy to select and evaluate candidate housekeeping genes with the aim of identifying optimal housekeeping genes for RT-qPCR analyses of kidney tissue in three *Pkd1*-deficient mouse models: *Pkd1*^{+/-} [haploinsufficient (HT), noncystic] and its control *Pkd1*^{+/+} (wild type, WT); *Pkd1*^{fllox/fllox}:*Nestin*^{cre} and *Pkd1*^{fllox/-}:*Nestin*^{cre} (cystic, CY) and their controls *Pkd1*^{fllox/fllox} and *Pkd1*^{fllox/-} (noncystic, NC); and *Pkd1*^{V/V} [severely cystic, SC] and its control *Pkd1*^{+/+} (CO, noncystic). Such steps are outlined in Fig. 1.

Raw RT-qPCR data in renal tissue were obtained for the *Actb*, *Actg1*, *B2m*, *Gapdh*, *Hprt*, *Pgam1* and *Ppia* candidate housekeeping genes for each of the *Pkd1*-deficient mouse models. The corresponding median Ct values are shown in Fig. 2. High expression levels were obtained for *Actg1* [16.60 (1.61)], *B2m* [19.94 (0.88)], *Gapdh* [19.11 (1.63)], *Pgam1* [19.52 (1.10)] and *Ppia* [16.60 (0.75)], with median Cts lying between 15 and 20. *Hprt* [22.37 (0.69)] and *Actb* [25.38 (1.32)], in turn, displayed moderate (Ct between 20 and 25) and relatively low expression (Ct above 25), respectively (Fig. 2). This process was preceded by assessment of RNA quality, which showed that RIN (RNA Integration Numbers) ranged from 5.9 to 8.8 among the analyzed samples (Supplementary Table S4).

Separate assessments and comparisons involving the renal cystic mice and their corresponding controls were performed, including only the *Pkd1*^{fllox/fllox}:*Nestin*^{cre} and *Pkd1*^{fllox/fllox} genotypes as well as both cystic genotypes and corresponding controls: *Pkd1*^{fllox/fllox}:*Nestin*^{cre}, *Pkd1*^{fllox/-}:*Nestin*^{cre}, *Pkd1*^{fllox/fllox} and *Pkd1*^{fllox/-} (Supplementary Tables S2 and S3). The results yielded by the two analyses did not significantly differ, showing similarity and stability of genetic background between both model pairs. Of note, this pattern was also observed between such model pairs in a previous study of ours directed to identifying housekeeping genes for microRNA expression analysis.²¹ In this context, in the current study we analyzed this cystic model merging *Pkd1*^{fllox/fllox}:*Nestin*^{cre} and *Pkd1*^{fllox/-}:*Nestin*^{cre} mice in the CY group and *Pkd1*^{fllox/fllox} and *Pkd1*^{fllox/-} in the NC group.

Analysis of expression stability of the candidate housekeeping genes

The following step in the process of selecting the best housekeeping genes was the assessment of expression stability for each of the candidates, taking into account the related genetic backgrounds. This task was accomplished using the NormFinder, GeNorm, RefFinder, Δ Ct method, Bestkeeper and DataAssist software packages (Fig. 2), which allowed determining their relative expression stability and generating a ranking among the best ones. The most stably expressed genes in the kidney samples of the three *Pkd1*-deficient mouse models were defined by the lowest variability values observed in each condition of interest. It must be pointed out that the results for the CY-NC model did not differ between the two and four-genotype analyses (Supplementary Tables S2 and S3).

All candidate housekeeping mRNAs presented M values below 1.5, the GeNorm set threshold, findings that are consistent with stability.²² The Bestkeeper software points out inconsistency when SD is higher than 1.0, a pattern detected only for *Hprt* and *Pgam1* in the SC sample groups (Supplementary Table S2). NormFinder evaluates expression stability by analyzing the intra- and intergroup transcriptional variation of the candidate reference genes. An SD value lower than 0.5 is recommended to

consider a gene a suitable housekeeping. *Ppia*, *Hprt*, *Pgam1* and *B2m* had SD values below 0.5, while the *Actb*, *Actg1* and *Gapdh* values lied above 0.5 in all sample groups. Moreover, *Pgam1* and *B2m* displayed SD higher than 0.5 in the SC group, *B2m* in CO and SC + CO, and *Gapdh* in CY, NC, HT, WT, SC e SC + CO groups. These results suggest that these candidate genes should not be considered suitable housekeepings in the mentioned groups and settings.

Based on the different used algorithms and considering all ranks yielded by the referred analyses, *Ppia* appeared as the most stably expressed housekeeping gene for analyses including all groups, as well as for the CY, SC, CY + NC and SC + CO groups. The data that supported this conclusion were yielded by NormFinder (SD = 0,22), GeNorm (M value = 0,53), RefFinder (Geomean = 1,00), Δ Ct method (Mean SD = 0,80), Bestkeeper (CV = 3,24 and SD = 0,54) and DataAssist (Score = 0,68) (Supplementary Table S2). *Pgam1*, on the other hand, was the most stably expressed housekeeping gene for analyses involving the WT + CO groups, *Actb* for the NC group, and *Hprt* for analyses including the HT + WT groups as well as only HT animals (Table 1).

Taken together, our data ranked *Ppia* and *Hprt* as the most stable candidate housekeeping genes. *Gapdh*, on the other hand, was deemed as the least stable one, being associated with the following values: NormFinder (SD = 0.83), GeNorm (M value = 085), RefFinder (Geomean = 7.00), Δ Ct method (Mean SD = 1.38), Bestkeeper (CV = 4.32 and SD = 0.82), and DataAssist (Score = 0,95) (Supplementary Table S2).

Since the selection of the most suitable housekeeping gene depends on the *Pkd1* deficiency model, it is important to conclude that *Ppia* was identified as the best housekeeping gene for the CY-NC and SC-CO pairs of samples while *Hprt* was the most suitable for HT-WT. Therefore, and interestingly, *Ppia* seems to be the best housekeeping in analysis involving models with cystic phenotypes (CY and SC), being associated with NormFinder (SD = 0.09), GeNorm (M value = 0.18), RefFinder (Geomean = 1.41), Δ Ct method (Mean SD = 0.63), Bestkeeper (CV = 3.25 and SD = 0.84), and DataAssist (Score = 0.50) (Supplementary Table S2). *Pgam1*, in turn, appears as the most appropriate housekeeping gene when comparing noncystic controls (WT, NC and CO) (Table 1).

Analysis of the best combination of housekeeping genes

The use of combined housekeeping genes is a strategy often employed to improve comparisons of relative target gene expression among groups. A comprehensive analysis of potential combinations of evaluated candidates, therefore, should be performed to establish the best anchors to quantify and compare gene expression. Ultimately, this approach constitutes a way of minimizing possible outliers and inappropriate differences between measurements.

The software packages recommend at least two genes to be used together as housekeeping genes. The best combination of candidate housekeepings for each of our group of samples, based on analyses yielded by different software packages, is shown in Table 2. Such analyses revealed that the *Actb* + *Hprt* and *Hprt* + *Ppia* pairs are the combinations most often identified as the best housekeeping gene options for comparisons including all groups, with the same statistical weight; *Actg1* + *Ppia* was the most frequent pair for the CY group; *Actb* + *Pgam1* for NC and WT; *Hprt* + *Pgam1* for HT; *Actb* + *Ppia* or *Actg1* + *Ppia* for SC; and *Actg1* + *Pgam1* for the CO group.

Comparisons of the different *Pkd1*-deficient kidney tissues with their respective controls identified *Pgam1* + *Ppia* as the best pair of housekeeping genes for CY and NC, *B2m* + *Hprt* for HT and WT, and *Actg1* + *Ppia* for SC and CO. Additionally, *Actb* + *Hprt* + *Ppia* was the most frequent best trio identified for analyses including all groups; *Actg1* + *Pgam1* + *Ppia* for CY and NC, *Actg1* + *B2m* + *Hprt* for HT and WT, and *Actb* + *Actg1* + *Ppia* or *Actg1* + *Hprt* + *Ppia* for SC and CO (Table 2).

Notably, the identified best pair and trio combinations of housekeeping genes provided further support to the association of *Ppia* and *Pgam1* with the cystic and non-cystic phenotypes, respectively. Moreover, considering all samples together *Ppia* remains the most stable candidate housekeeping gene.

Table 1

Best housekeeping gene for each group of samples, each model and respective control, and all groups yielded by software analyses.

Groups	Best housekeeping genes identified by software analyses						Best housekeeping gene
	NormFinder	GeNorm	RefFinder	Δ Ct method	Bestkeeper	DataAssist	
All	<i>Ppia</i> *	<i>Actb</i> + <i>Actg1</i>	<i>Ppia</i>	<i>Ppia</i>	<i>Hprt</i>	<i>Ppia</i>	<i>Ppia</i>
HT	<i>Pgam1</i>	<i>Hprt</i> + <i>Ppia</i>	<i>Pgam1</i>	<i>Pgam1</i>	<i>Hprt</i>	<i>Hprt</i>	<i>Hprt/Pgam1</i>
WT	<i>Ppia</i>	<i>B2m</i> + <i>Pgam1</i>	<i>Pgam1</i>	<i>Pgam1</i>	<i>Hprt</i>	<i>Ppia</i>	<i>Pgam1</i>
CY	<i>Ppia</i>	<i>Actg1</i> + <i>Ppia</i>	<i>Ppia</i>	<i>Ppia</i>	<i>Actb</i>	<i>Ppia</i>	<i>Ppia</i>
NC	<i>Pgam1</i>	<i>Actb</i> + <i>Pgam1</i>	<i>Hprt</i>	<i>Hprt</i>	<i>Actb</i>	<i>Ppia</i>	<i>Actb/Hprt/Pgam1</i>
SC	<i>Ppia</i>	<i>Actg1</i> + <i>Hprt</i>	<i>Ppia</i>	<i>Ppia</i>	<i>Gapdh</i>	<i>Ppia</i>	<i>Ppia</i>
CO	<i>Pgam1</i>	<i>Actg1</i> + <i>Ppia</i>	<i>Pgam1</i>	<i>Pgam1</i>	<i>Hprt</i>	<i>Actg1</i>	<i>Pgam1</i>
HT + WT	<i>Pgam1</i> *	<i>Hprt</i> + <i>Ppia</i>	<i>Actg1</i>	<i>Actg1</i>	<i>Hprt</i>	<i>Hprt</i>	<i>Hprt</i>
CY + NC	<i>Pgam1</i> *	<i>Actg1</i> + <i>Ppia</i>	<i>Ppia</i>	<i>Ppia</i>	<i>Actb</i>	<i>Ppia</i>	<i>Ppia</i>
SC + CO	<i>Ppia</i> *	<i>Actg1</i> + <i>Hprt</i>	<i>Ppia</i>	<i>Ppia</i>	<i>Actb</i>	<i>Ppia</i>	<i>Ppia</i>
*Best reference genes considering intra- and intergroup variations							

All, all samples; HT, haploinsufficient; WT, wild type; CY, cystic; NC, noncystic; SC, severely cystic phenotype; CO, control for the severely cystic phenotype.

Genes in bold: higher frequency of appearance in softwares.

Table 2

Best combination of housekeeping genes for each group of samples, each model and respective control, and all groups yielded by software analyses.

Groups	Best pair of housekeeping genes identified by software analyses						Best pair of housekeeping genes	Best trio of housekeeping genes
	NormFinder	GeNorm	RefFinder	Δ Ct method	Bestkeeper	DataAssist		
All	<i>Actb</i> + <i>Pgam1</i> *	<i>Actb</i> + <i>Actg1</i>	<i>Hprt</i> + <i>Ppia</i>	<i>Hprt</i> + <i>Ppia</i>	<i>Actb</i> + <i>Hprt</i>	<i>Hprt</i> + <i>Ppia</i>	<i>Actb</i> + <i>Hprt</i> / <i>Hprt</i> + <i>Ppia</i>	<i>Actb</i> + <i>Hprt</i> + <i>Ppia</i>
HT	<i>Hprt</i> + <i>Pgam1</i>	<i>Hprt</i> + <i>Ppia</i>	<i>Actg1</i> + <i>Pgam1</i>	<i>Actg1</i> + <i>Pgam1</i>	<i>Hprt</i> + <i>Ppia</i>	<i>B2m</i> + <i>Hprt</i>	<i>Hprt</i> + <i>Pgam1</i>	<i>Actg1</i> + <i>Hprt</i> + <i>Pgam1</i> / <i>Hprt</i> + <i>Pgam1</i> + <i>Ppia</i>
WT	<i>Pgam1</i> + <i>Ppia</i>	<i>B2m</i> + <i>Pgam1</i>	<i>Actb</i> + <i>Pgam1</i>	<i>Actb</i> + <i>Pgam1</i>	<i>Actb</i> + <i>Hprt</i>	<i>Pgam1</i> + <i>Ppia</i>	<i>Actb</i> + <i>Pgam1</i>	<i>Actb</i> + <i>Pgam1</i> + <i>Ppia</i>
CY	<i>Pgam1</i> + <i>Ppia</i>	<i>Actg1</i> + <i>Ppia</i>	<i>Actg1</i> + <i>Ppia</i>	<i>Actg1</i> + <i>Ppia</i>	<i>Actb</i> + <i>B2m</i>	<i>Pgam1</i> + <i>Ppia</i>	<i>Actg1</i> + <i>Ppia</i>	<i>Actb</i> + <i>Actg1</i> + <i>Ppia</i> / <i>Actg1</i> + <i>Pgam1</i> + <i>Ppia</i> / <i>Actg1</i> + <i>B2m</i> + <i>Ppia</i>
NC	<i>Pgam1</i> + <i>Ppia</i>	<i>Actb</i> + <i>Pgam1</i>	<i>Actb</i> + <i>Hprt</i>	<i>Actb</i> + <i>Hprt</i>	<i>Actb</i> + <i>Actg1</i>	<i>Pgam1</i> + <i>Ppia</i>	<i>Actb</i> + <i>Pgam1</i>	<i>Actb</i> + <i>Hprt</i> + <i>Pgam1</i> / <i>Actb</i> + <i>Pgam1</i> + <i>Ppia</i>
SC	<i>Actg1</i> + <i>Ppia</i>	<i>Actg1</i> + <i>Hprt</i>	<i>Actb</i> + <i>Ppia</i>	<i>Actb</i> + <i>Ppia</i>	<i>Actb</i> + <i>Gapdh</i>	<i>Actg1</i> + <i>Ppia</i>	<i>Actb</i> + <i>Ppia</i> / <i>Actg1</i> + <i>Ppia</i>	<i>Actb</i> + <i>Hprt</i> + <i>Ppia</i> / <i>Actg1</i> + <i>Hprt</i> + <i>Ppia</i>
CO	<i>Actg1</i> + <i>Pgam1</i>	<i>Actg1</i> + <i>Ppia</i>	<i>Gapdh</i> + <i>Pgam1</i>	<i>Actg1</i> + <i>Pgam1</i>	<i>Gapdh</i> + <i>Hprt</i>	<i>Actg1</i> + <i>Pgam1</i>	<i>Actg1</i> + <i>Pgam1</i>	<i>Actg1</i> + <i>Gapdh</i> + <i>Pgam1</i>
HT + WT	<i>Hprt</i> + <i>Pgam1</i> *	<i>Hprt</i> + <i>Ppia</i>	<i>Actg1</i> + <i>B2m</i>	<i>Actg1</i> + <i>B2m</i>	<i>Actb</i> + <i>Hprt</i>	<i>B2m</i> + <i>Hprt</i>	<i>B2m</i> + <i>Hprt</i>	<i>Actg1</i> + <i>B2m</i> + <i>Hprt</i>
CY + NC	<i>Pgam1</i> + <i>Ppia</i> *	<i>Actg1</i> + <i>Ppia</i>	<i>Actg1</i> + <i>Ppia</i>	<i>Pgam1</i> + <i>Ppia</i>	<i>Actb</i> + <i>Hprt</i>	<i>Pgam1</i> + <i>Ppia</i>	<i>Pgam1</i> + <i>Ppia</i>	<i>Actg1</i> + <i>Pgam1</i> + <i>Ppia</i>
SC + CO	<i>Actg1</i> + <i>Ppia</i> *	<i>Actg1</i> + <i>Hprt</i>	<i>Actb</i> + <i>Ppia</i>	<i>Actg1</i> + <i>Ppia</i>	<i>Actb</i> + <i>Hprt</i>	<i>Actg1</i> + <i>Ppia</i>	<i>Actg1</i> + <i>Ppia</i>	<i>Actb</i> + <i>Actg1</i> + <i>Ppia</i> / <i>Actg1</i> + <i>Hprt</i> + <i>Ppia</i>

*Best reference genes considering intra- and intergroup variations

All, all samples; HT, haploinsufficient; WT, wild type; CY, cystic; NC, noncystic; SC, severely cystic phenotype; CO, control for the severely cystic phenotype.

Genes in bold: higher frequency of appearance in softwares.

Determination of the optimal number of housekeeping genes

The use of an optimal number of reference genes is important to save samples and primers, select and validate housekeeping genes, classify samples, group genes and monitor time-dependent processes. While the selection and use of stable housekeeping genes is often limited to only one, in most of such cases the stability of gene expression analysis could improve with the inclusion of one or more additional housekeeping controls. In this scenario, in the current study we established the minimum number of housekeeping genes that should be used in gene expression analysis involving each of our groups, each model with its respective control, and all groups.

The GenEx software package was used to calculate the Acc.SD for the seven candidate housekeeping genes and to determine the optimal number of reference genes to be used for each dataset (Fig. 3). Based on the 0.15 Acc.SD cut-off, *Ppia* was

identified as the most stable candidate gene for normalization when considering all sample groups (All; Fig. 4). The addition of another gene led to a cut-off greater than 0.15, demonstrating that the insertion of a second normalizer in the gene expression analysis would increase the Acc.SD. Moreover, the addition of more than one gene led to a cut-off greater than 0.2, indicating that the insertion of a third gene would increase even more the Acc.SD. Applying a global analysis and based on the lowest Acc.SD value, the best normalizers for each sample group were found to be: two (*Actg1 + Ppia*) was the optimal number of housekeeping genes to be considered for the CY group, three (*Actb + Hprt + Pgam1*) for the NC group, two (*Hprt + Pgam1*) for HT, two (*Actb + Pgam1*) for the WT group, one (*Ppia*) for SC, and three (*Actg1 + Gapdh + Pgam1*) for the CO group. Importantly, we observed that different numbers of housekeeping genes should be used when comparing the renal tissue of each *Pkd1*-deficient model with its respective control: one (*Ppia*) for CY + NC, two (*B2m + Hprt*) for HT + WT, and two (*Actg1 + Ppia*) for SC + CO.

Intergene expression normalization among the top three candidate housekeeping genes

An optimal housekeeping gene should present expression stability, displaying low expression variability with respect to other housekeeping genes. This property can be evaluated by normalizing their expression by each other's. To evaluate this aspect for the best candidate housekeeping genes, we used as the third strategy different algorithms to normalize the expression levels (Ct) of the top three candidates (*Actb + Hprt + Ppia*) to each other's expression (Fig. 4). Their expression levels did not differ between any two-sample groups. These results suggest that any of these three genes are suitable to be employed as housekeeping genes among the analyzed samples. Interestingly, the presence of *Ppia* as a housekeeping gene decreased the gene expression dispersion of both *Actb* and *Hprt* (Fig. 4).

Correlation of mRNAs expression between pairs of the top three candidate housekeeping genes

Pair correlation analysis between the best housekeeping genes can provide options to choose relevant housekeeping genes for gene expression studies. This approach was applied to our models orthologous to ADPKD associated with different profiles of *Pkd1* deficiency, displaying or not a cystic phenotype. Such correlation analyses were performed using the mRNAs expression data yielded by all evaluated kidney samples. The expression levels (Ct) of the three best candidate housekeeping genes revealed a very strong correlation between *Hprt* and *Ppia* ($\rho = 0.89$, $p < 0.05$, Fig. 5) and a strong correlation between *Actb* and *Hprt* ($\rho = 0.84$, $p < 0.05$, Fig. 5). In addition, a moderate correlation was observed between *Actb* and *Ppia* ($\rho = 0.81$, $p < 0.05$, Fig. 5). These results showed that the *Actb*, *Hprt* and *Ppia* expression profiles are correlated in all the samples herein evaluated and can be used together as suitable housekeeping genes.

Validation of the best candidate housekeeping genes by normalizing expression of Stat3 target gene

In order to validate the expression stability of the three best candidate housekeeping genes, the relative expression of the *Stat3* target gene was assessed using different combinations of *Actb*, *Hprt* and *Ppia* normalizers (Fig. 6). *Stat3* was selected for this purpose because it is a well-defined gene with increased expression in ADPKD and in murine polycystic kidney disease models.

The *Stat3* expression level was consistent with upregulation in SC kidneys compared to its control CO when normalized by *Ppia* expression (Fig. 6C). Trends of upregulation were also observed in SC kidneys compared to CO when normalized by other combinations of the best candidate housekeeping genes (Figs. 6B, 6D, 6E, 6F and 6G). Trends of *Stat3* upregulation in CY compared to their control kidneys were also observed when its expression was normalized by different combinations of *Actb*, *Hprt* and *Ppia* (Figs. 6A, 6B, 6D, 6E, 6F and 6G). In contrast, *Stat3* expression was not statistically different between HT and WT kidneys regardless the housekeeping gene combination used for normalization (Fig. 6). Our results also suggest that the SC kidneys, and likely their controls CO, have expression profiles slightly different from the other analyzed mouse model kidneys. Taken together, the use of *Ppia* showed to be the most suitable housekeeping gene among all considered sample groups.

Many studies with other animal models, including kidney tissues, have used *Gapdh* as the housekeeping gene, assuming unaltered expression.^{20,23,24 25} Given the weakness of *Gapdh* as a housekeeping gene observed in our models, it is essential that

this gene be analyzed and compared to other potential housekeeping gene normalizers. Indeed, when we analyzed *Stat3* expression using *Gapdh* as the housekeeping normalizer, we did not find different expression levels between CY and NC, HT and WT, and SC and CO (Supplementary Figure S2). These findings are in disagreement with the trends of *Stat3* upregulation detected in CY kidneys compared to NC and in SC compared to CO evidenced when our housekeeping gene combinations were applied.

Expression of the best candidate housekeeping genes does not correlate with the kidney weight/body weight ratio in CY mice

Since analyses involving mouse models orthologous to human ADPKD often require assessment of severity of the cystic phenotype or cyst growth, we reasoned that the identified housekeeping genes should have their stability evaluated with respect to the renal cyst burden, reflected in kidney size/weight. This approach could allow the investigation whether the disease stage, progression and severity significantly modify the expression patterns of potential housekeeping genes. To accomplish this task, we sought for potential correlations between the expression levels of *Actb*, *Hprt* and *Ppia* and kidney weight/body weight ratio (KW/BW) in the CY group. The expression levels of *Actb*, *Hprt* and *Ppia*, however, did not correlate with KW/BW ($\rho = -0.05$, $p < 0.91$, Supplementary Figure S3A; $\rho = -0.17$, $p < 0.69$, Supplementary Figure S3B; and $\rho = 0.17$, $p = 0.69$, Supplementary Figure S3C, respectively). This lack of correlations strongly suggests that the cystic burden does not significantly influence the expression level of the analyzed housekeeping genes, further supporting their use as controls in studies involving animals with different severities of renal cystic phenotypes.

Discussion

PKD1/PKD2 pathogenic mutations deregulate a number of downstream pathways that aberrantly affect major cellular properties and contribute to the ADPKD phenotype. Such pathways encompass mTOR, cMYC, STATs, cAMP and intracellular calcium homeostasis, promoting cyst epithelial cell proliferation, apoptosis, epithelial secretion, and cellular metabolic rewiring²⁶ which in turn constitute logical targets for the development of therapeutic interventions. Given there is no widely accepted single model of ADPKD for therapeutic testing at present, most agents are tested in multiple preclinical models.²⁷ Since orthologous animal models with slowly progressive renal cystic disease reproduce more closely the human disease, they are more appropriate to unravel mechanisms underlying ADPKD pathogenesis and generate useful biomarkers.²⁸

To systematically evaluate the complexity of target gene expression analyses in *in vivo* models orthologous to ADPKD and propose the best standards for such studies, we aimed to establish the most appropriate housekeeping genes to be employed in three mouse models with distinct profiles of *Pkd1* gene deficiency, in different experimental scenarios. While HT mice show almost exclusively *Pkd1*^{+/-} renal cells but do not display cysts, reproducing the background cell environment found in ADPKD type 1 patients, CY mice have renal cysts presumably formed by *Pkd1*^{-/-} cells, reproducing the ADPKD type 1 cystic phenotype and its expected consequences. Notably, CY mice have preserved GFR at the evaluated ages (12 weeks). To complete the diverse phenotypes associated with *Pkd1* deficiency, we included in our systematic assessment, an early, severely cystic animal model, the *Pkd1*^{V/V} mouse (SC).

While the use of non-validated endogenous control genes in gene expression studies results in unreliable data, a universal, invariably expressed gene is unlikely to exist.²⁹ This hypothetical control gene, in fact, may not even exist within individual tissues and cell types. In this context, a more adequate purpose is to identify the most reliable gene or set of genes to be applied in each experimental setting. Although several studies have evaluated gene expression profiles to identify new biomarkers and therapeutic targets for ADPKD,^{30 26} to the best of our knowledge, no study to date has addressed the appropriateness of housekeeping gene usage in animal models orthologous to ADPKD. The present study identified *Ppia* as the best housekeeping gene for CY + NC and SC + CO groups, while *Hprt* was the best for the HT + WT group.

Cui et al (2009)³¹ have previously analyzed endogenous genes as potentially useful housekeeping genes for analyses of target gene expression in kidney tissue samples of *cpk* mice, a well-characterized recessive cystic kidney disease model.³¹ They studied the expression of 16 commonly used housekeeping genes in seven mildly and seven severely affected whole kidney tissue samples using TaqMan RT-qPCR assays and Affymetrix GeneChip arrays, normalized and tested for overall variance and equivalence of the means. Both statistical approaches and both TaqMan- and GeneChip-based methods converged on 3 out of

the 4 top-ranked genes (*Ppia*, *Gapdh* and *Pgk1*) that displayed the most constant expression levels across the assessed phenotypes. Such results led to the conclusion that a combination of the top-ranked genes would provide suitable endogenous internal control for gene expression studies in *cpk* kidney tissues across a wide range of disease severity. The different disease etiology, however, precludes the application of these data to gene expression studies performed in *in vivo* models orthologous to ADPKD. The rationale of the current study was to run the first assessment of candidate housekeeping genes for normalization of mRNA expression by RT-qPCR in kidney tissue of mouse models orthologous to ADPKD with distinct patterns of *Pkd1* deficiency.

Leal et al (2016)³² has successfully evaluated the suitability of reference genes in meniscus samples in pathological and control conditions using the software packages applied in our current analysis.³² These investigators revealed *HPRT1* as the best single reference gene but as expected, showed that two or more reference genes should be used for gene expression normalization instead. According to the samples tested and proposed comparisons, the appropriate housekeeping gene combination included *HPRT1 + TBP*, *HPRT1 + GAPDH*, or *HPRT1 + TBP + GAPDH*. Other authors suggested that *PPIA* and *RPS13*, especially in combination, were the best suitable references to normalize gene expression in ccRCC tissues as compared to classical reference genes such as *beta-Actin*, *GAPDH*, *18S* or *B2M*.³³ Therefore, such reports served as anchors for our present investigation about the stability of seven candidate genes selected from previous studies (*Actb*, *Actg1*, *B2m*, *Gapdh*, *Hprt*, *Pgam1* and *Ppia*)^{34,35 24 31,36,37 38} in kidneys samples of *Pkd1*-deficient noncystic and cystic mouse models. The stability of gene expression was analyzed using distinct statistical models, including a pairwise comparison model, geNorm, and an ANOVA-based model, NormFinder.

Each of the applied algorithms ranked the best candidate reference genes, identifying *Ppia* as the most stable and reliable housekeeping gene, while *Gapdh* was least stable for all kidney samples. *Gapdh* is the most commonly used gene as endogenous control in RT-qPCR analyses, since its expression is usually constant.^{23,24,38,39 25} Using a similar approach, a recent report evaluated six commonly used reference genes (*Actb*, *B2m*, *Gapdh*, *Hmbs*, *Hprt* and *Ppia*) to identify the most constantly expressed gene under the influence of testosterone in rat.⁴⁰ This study showed that *Hmbs* and *Ppia* were the most stably expressed genes in the hypothalamus while *Hmbs* and *Gapdh* appeared to be the most stable genes in kidneys, indicating that in this setting the *Gapdh* expression profile was more stable than in our case. Concentrations of *GAPDH*, however, may vary among individuals,⁴¹ during pregnancy,⁴² according to developmental stage^{43 44} and during the cell cycle.⁴⁵ Other reports also documented such a limitation.^{46-49 50} Therefore, the recognition that the expression of *Gapdh* may exhibit tissue-specific regulation is consistent with our results and emphasizes the need for validation of commercially available control assays.

In line with the aforementioned raised concerns, our findings revealed that the selection of appropriate housekeeping genes and consequent use of *Ppia* as the reference, allowed the detection of differences between groups regarding *Stat3* expression, thought to be upregulated in kidney cysts and associated with PKD progression in mouse models.^{8,51-56 57} On the other hand, the normalization using *Gapdh* showed no difference. Interestingly, despite the different ages between the CY and SC groups, normalization using *Ppia* showed very close expression profiles in these two groups, decreasing the expression dispersion observed with *Actb* and *Hprt*. These data suggest that *Ppia* is a good expression normalizer for models associated with renal cystic phenotypes, a piece of information that may be highly relevant to investigate and compare different cystic disease stages, progression and severity. On the other hand, *Pgam1* was associated with the *Pkd1*-haploinsufficient non-cystic model, suggesting that this might be a more appropriate normalizer to be used in studies involving *Pkd1*-deficient non-cystic renal phenotypes.

One limitation of the present study relies on the selection of only seven candidate housekeeping genes to be tested for validation, a process that was based on data available in previous studies. We believe, therefore, that further research is still required in this field, since the evaluation of additional candidate housekeeping genes in additional *Pkd1*-orthologous mouse models and experimental conditions are likely to improve the specificities of gene normalization in this biological scenario. Moreover, the pipeline adopted in the present study should be further tested using other models as well.

In conclusion, our findings established *Ppia* as the most appropriate housekeeping gene for comparisons involving a cystic model and its respective control, *Hprt* for non-cystic *Pkd1*-haploinsufficient and wild-type mice, and *Ppia* for a severely cystic model and its corresponding wild-type control. Overall, our analysis identified *Ppia* as the best and the most stable housekeeping

gene in the comprehensive *Pkd1*-deficiency scenario, while *Gapdh* was the least stable in the three evaluated mouse models. Such data will allow more robust and reliable analyses of target gene expression in kidney tissue of *Pkd1*-deficient mouse models, a reality that will contribute to the elucidation of the role of different genes in different scenarios related to ADPKD or *Pkd1* biology. Normalizing to a suitable housekeeping gene or sets of them can not only remove artifactual differences due to sampling and quality of mRNA but also identify real changes in gene expression levels.

Methods

Ethical statement

The authors confirm that all experiments were carried out in accordance with ARRIVE guidelines and regulations (<https://arriveguidelines.org>). The ethical approval for all animal care and procedures were carried out in accordance with relevant guidelines and regulations by the Ethic Committee on Animal Use of the Federal University of Sao Paulo - Brazil (CEUA/UNIFESP), protocol number CEUA 4558140219.

ADPKD mouse models

The three mouse models were maintained on the C57BL/6 strain background, an important requirement for the performance of our study. Two models were evaluated at 10–12 weeks of age: a renal cystic mouse (*Pkd1*^{fllox/fllox}:*Nestin*^{cre}/*Pkd1*^{fllox/-}:*Nestin*^{cre}, CY, n = 10; and their corresponding noncystic controls *Pkd1*^{fllox/fllox}/*Pkd1*^{fllox/-}, NC, n = 10) and a *Pkd1*-haploinsufficient noncystic mouse (*Pkd1*^{+/-}, HT, n = 6) and its respective wild-type control (*Pkd1*^{+/+}, WT, n = 6). The third model was assessed at 15 days of life due to its severely renal cystic phenotype (*Pkd1*^{V/V}, SC, n = 7) along with its same-age wild-type control (CO, n = 5). It must be noted that the WT and CO controls harbor the same genotype (*Pkd1*^{+/+}) but were analyzed at different ages. Only kidneys from male animals were analyzed in order to avoid potential gender-related experimental variability. The mice were genotyped using specific PCR reactions.²¹

The CY mice, homozygous for a *Pkd1*-floxed allele (*Pkd1*^{fllox}) or compound heterozygous *Pkd1*^{fllox/-}, display a mosaic pattern of full gene inactivation induced by a Nestin-Cre transgene through excision of exons 2–4 (*Pkd1*^{fllox/fllox}:*Nestin*^{cre}).^{38,58,59 60} The HT model is heterozygous for a *Pkd1* null allele, characterized by early transcriptional interruption,^{61 60} and develops no renal cysts by 12 weeks of age. The SC model is homozygous for the *Pkd1* knockin T3041V allele, which prevents the autoproteolytic cleavage of PC1 at the GPS site.^{62 60} *Pkd1*^{V/V} animals have no gross phenotype by postnatal day (P) 6 but develop rapid and progressive distal nephron cysts thereafter. This severe renal phenotype, which eventually leads to renal failure, is responsible for the early mortality that occurs between the 2nd and 6th week.⁶²

The mice were fed *ad libitum* and housed at constant ambient temperature in a 12-hour light cycle. Animal procedures were approved by the Internal Biosafety Commission of Genetically Modified Organisms of the University of São Paulo School of Medicine and by the Universidade Federal de São Paulo (UNIFESP) Research Ethics Committees. SC (*Pkd1*^{V/V}) and its wild-type control (CO) animals were euthanized by cervical dislocation, whereas the other animal groups were euthanized with intraperitoneal thiopental (0.4 mg/g of body weight). Their kidneys were appropriately harvested for RT-qPCR analyses. All experiments were conducted in accordance with international standards of animal care and experimentation. Both kidneys were collected and stored at – 80°C for further use.²¹

Housekeeping genes

Using the terms “genes” and “polycystic and reverse transcriptase polymerase chain reaction” in the PubMed search, we found seven articles employing tissue samples from human ADPKD and animal ADPKD-orthologous kidneys. We also included housekeeping genes selected from other tissues in the literature,^{24,31,34–37 38} namely *Actb*, *Actg1*, *B2m*, *Gapdh*, *Hprt*, *Pgam1* and *Ppia*. All of these seven genes are constitutively expressed in kidney tissue of mouse models orthologous to ADPKD, have independent cellular functions, and are assumed not to be co-regulated.

RNA extraction

Renal tissue lysis was performed using zirconia beads (Interprise, USA) and the Precellys (BioAmerica, USA) homogenizer. TRIzol (Life Technologies, USA) was employed for total RNA extraction according to the manufacturer's protocol. The RNA quantity and purity were determined using the NanoVue spectrophotometer (GE Healthcare Life Sciences, USA) and analyzed with the Agilent 2100 Bioanalyzer 6000 Nanochip (Agilent Technologies Inc., Waldbronn, BW, Germany). Total RNA was stored at -80°C until further use.²¹

cDNA preparation and RT-qPCR

Complementary DNA (cDNA) was synthesized from 2 µg of total RNA using the High-Capacity cDNA Reverse Transcription Kit (Applied Biosystems), according to the manufacturer's instructions.

Gene expression was performed in triplicate using SYBR Green (Applied Biosystems) in the QuantStudio7 qPCR system according to the manufacturer's instructions. Primer sequences for the 7 candidate housekeeping genes and the target gene are shown in Supplementary Table S1. Gene expression quantification was performed in the same run for each sample to eliminate technical variation.

Analysis of housekeeping gene expression stability

The tissue samples were classified into 7 distinct groups: (1) CY, including the cystic kidney samples; (2) NC, non-cystic kidney samples; (3) HT, *Pkd1*-haploinsufficient kidney samples; (4) WT, wild-type kidney samples; (5) SC, severely cystic kidney samples; (6) CO, early-life, wild-type kidney samples; and (7) All, including all kidney samples. The three mouse models with distinct patterns of *Pkd1* deficiency were compared with their respective control tissues: CY vs NC, HT vs WT and SC vs CO.

RT-qPCR Cts were manually settled as 0.02 while the mean Ct values of the three technical replicates were imported to six algorithms: NormFinder (version 0.953; <https://moma.dk/normfinder-software>),⁶³ GeNorm (<https://genorm.cmgg.be/>),²² BestKeeper (version 1.0; <https://www.gene-quantification.de/bestkeeper.html>),⁶⁴ DataAssist™ (version 3.01; <https://www.thermofisher.com/br/en/home/technical-resources/software-downloads/dataassist-software.html>), the comparative Δ Ct method¹² and RefFinder (<https://www.heartcure.com.au/reffinder/>)⁶⁵ following the authors' recommendations. These software packages were used to determine the relative expression stability of the candidate housekeeping genes and to generate a ranking for the best ones.

The NormFinder software is a Microsoft Excel-based application that evaluates the expression stability of candidate reference genes. The stability value is calculated by analyzing their intra- and intergroup transcriptional variation. A lower variation in the expression levels indicates more stable gene expression (low stability value).⁶³ The GeNorm program determines the gene expression stability value M according to the average pairwise variation between one particular gene and all other candidate genes. The most stable gene expression yields the lowest M value.²² The BestKeeper program calculates the standard deviation (SD) and the coefficient of variance (CV) of the Ct levels, and applies the Pearson correlation coefficient to estimate the inter-gene relations of all possible candidate gene pairs.⁶⁴ The DataAssist software, in turn, determines a score for the best reference genes based on the GeNorm algorithm. It uses the RQ to calculate the stability value of each gene. A lower score indicates more stable expression (Thermo Fisher, USA). The comparative Δ Ct method is based on a comparison of the relative expression of possible gene pairs within each sample. Gene stability is ranked according to the reproducibility of the gene expression differences in the analyzed samples.¹² Lastly, the RefFinder software integrates the NormFinder, GeNorm, BestKeeper, and the comparative Δ Ct method assigning an appropriate weight to each gene, calculating the geometric mean of these weights, and generating a rank of the best candidate reference genes.⁶⁵ The optimal number of reference genes was selected using the GenEx software package.

Statistical analysis

The Shapiro-Wilk test showed that the Ct values of the candidate housekeeping genes were not normally distributed, so that the results are expressed as median and interquartile range (IQ). The Δ Ct values were determined by: Ct(target gene) - Ct(housekeeping gene) or Ct(target gene) - mean[Ct(housekeeping gene 1);Ct(housekeeping gene 2)].

To evaluate potential expression differences of *Actb*, *Actg1*, *B2m*, *Gapdh*, *Hprt*, *Pgam1*, *Ppia* and *Stat3* among the sample groups, the Kruskal-Wallis with Dunn's post-hoc test, followed by FDR correction using the Benjamini-Hochberg method, was used. Comparisons between the *Pkd1*-deficient model and its respective control were performed with the Mann-Whitney U test.

Lastly, the Spearman correlation test was employed to verify potential correlations among the expression levels of *Actb*, *Hprt* and *Ppia*, and between the expression levels of such genes and kidney weight in CY cystic kidney samples. A value between 0.30–0.50 was determined as a weak correlation, 0.50–0.70 as moderate, 0.70–0.90 as strong, and 0.90–1.00 as a very strong correlation.⁶⁶

Declarations

Data Availability: All data including supporting datasets are made available as main figures or supplementary information files.

Acknowledgements

This study received funding from Conselho Nacional de Desenvolvimento Científico e Tecnológico (CNPq) 309045/2018-5 (IPH); and Fundação de Amparo à Pesquisa do Estado de São Paulo (FAPESP) 2018/09135-0 (JJM), 2011/21593-4 (RM) 2015/23345-9 (MAB and IPH), 2015/17152-3 (LFO).

Author contributions

JJM, ACA and IPH designed the study, conceptualization, methodology, validation, formal analysis and investigation. AGA, FMF and RGM were responsible for sample collection. JJM, ACA and MSO performed the experiments. JJM, ACA, FMF, EHW, LFO and IPH analyzed the data. JJM, ACA, LFO and IPH wrote the first draft of the manuscript. MAB provided study material. All authors gave intellectual input and reviewed the last version of the manuscript.

Disclosures: The authors declare no competing interests.

References

- 1 Mason, S. B. *et al.* The biomarker enriched proteome of autosomal dominant polycystic kidney disease cyst fluid. *Proteomics Clin App***3**, 1247-1250, doi:10.1002/prca.200800163 (2009).
- 2 Grantham, J. J., Mulamalla, S. & Swenson-Fields, K. I. Why kidneys fail in autosomal dominant polycystic kidney disease. *Nat Rev Nephrol***7**, 556-566, doi:10.1038/nrneph.2011.109 (2011).
- 3 Lanktree, M. B. *et al.* Prevalence Estimates of Polycystic Kidney and Liver Disease by Population Sequencing. *J Am Soc Nephrol***29**, 2593-2600, doi:10.1681/asn.2018050493 (2018).
- 4 Cadnapaphornchai, M. A. Autosomal dominant polycystic kidney disease in children. *Curr Opin Pediatr***27**, 193-200, doi:10.1097/mop.000000000000195 (2015).
- 5 Bastos, A. P. & Onuchic, L. F. Molecular and cellular pathogenesis of autosomal dominant polycystic kidney disease. *Braz J Med Biol Res***44**, 606-617, doi:10.1590/s0100-879x2011007500068 (2011).
- 6 Corneec-Le Gall, E., Torres, V. E. & Harris, P. C. Genetic Complexity of Autosomal Dominant Polycystic Kidney and Liver Diseases. *J Am Soc Nephrol***29**, 13-23, doi:10.1681/asn.2017050483 (2018).
- 7 Bergmann, C. *et al.* Polycystic kidney disease. *Nat Rev Dis Primers***4**, 50, doi:10.1038/s41572-018-0047-y (2018).

- 8 Viau, A. *et al.* Tubular STAT3 Limits Renal Inflammation in Autosomal Dominant Polycystic Kidney Disease. *J Am Soc Nephrol***31**, 1035-1049, doi:10.1681/asn.2019090959 (2020).
- 9 Irazabal, M. V. *et al.* Imaging classification of autosomal dominant polycystic kidney disease: a simple model for selecting patients for clinical trials. *J Am Soc Nephrol***26**, 160-172, doi:10.1681/asn.2013101138 (2015).
- 10 Cornec-Le Gall, E. *et al.* Can we further enrich autosomal dominant polycystic kidney disease clinical trials for rapidly progressive patients? Application of the PROPKD score in the TEMPO trial. *Nephrol Dial Transplant***33**, 645-652, doi:10.1093/ndt/gfx188 (2018).
- 11 Kistler, A. D. *et al.* Urinary proteomic biomarkers for diagnosis and risk stratification of autosomal dominant polycystic kidney disease: a multicentric study. *PLoS One***8**, e53016, doi:10.1371/journal.pone.0053016 (2013).
- 12 Silver, N., Best, S., Jiang, J. & Thein, S. L. Selection of housekeeping genes for gene expression studies in human reticulocytes using real-time PCR. *BMC Mol Biol***7**, 33, doi:10.1186/1471-2199-7-33 (2006).
- 13 Nakao, R., Yamamoto, S., Yasumoto, Y., Kadota, K. & Oishi, K. Impact of denervation-induced muscle atrophy on housekeeping gene expression in mice. *Muscle Nerve***51**, 276-281, doi:10.1002/mus.24310 (2015).
- 14 Sellayah, D., Sek, K., Anthony, F. W., Hanson, M. A. & Cagampang, F. R. Sensitivity of housekeeping genes in the hypothalamus to mismatch in diets between pre- and postnatal periods in mice. *Neurosci Lett***447**, 54-57, doi:10.1016/j.neulet.2008.09.060 (2008).
- 15 Radonić, A. *et al.* Guideline to reference gene selection for quantitative real-time PCR. *Biochem Biophys Res Commun***313**, 856-862, doi:10.1016/j.bbrc.2003.11.177 (2004).
- 16 Wang, K. *et al.* Molecular engineering of DNA: molecular beacons. *Angew Chem Int Ed Engl***48**, 856-870, doi:10.1002/anie.200800370 (2009).
- 17 Manzano, R. *et al.* Housekeeping gene expression in myogenic cell cultures from neurodegeneration and denervation animal models. *Biochem Biophys Res Commun***407**, 758-763, doi:10.1016/j.bbrc.2011.03.096 (2011).
- 18 Liu, D. *et al.* Identification of Key Genes and Candidated Pathways in Human Autosomal Dominant Polycystic Kidney Disease by Bioinformatics Analysis. *Kidney Blood Press Res***44**, 533-552, doi:10.1159/000500458 (2019).
- 19 Lu, S., Gu, X., Hoestje, S. & Epner, D. E. Identification of an additional hypoxia responsive element in the glyceraldehyde-3-phosphate dehydrogenase gene promoter. *Biochim Biophys Acta***1574**, 152-156, doi:10.1016/s0167-4781(01)00359-1 (2002).
- 20 Dioudis, C., Dimitrios, G., Thomas, T. H. & West, I. C. Abnormal glyceraldehyde-3-phosphate dehydrogenase binding and glycolytic flux in Autosomal Dominant Polycystic Kidney Disease after a mild oxidative stress. *Hippokratia***12**, 162-167 (2008).
- 21 Muñoz, J. J. *et al.* Identification of housekeeping genes for microRNA expression analysis in kidney tissues of Pkd1 deficient mouse models. *Sci Rep***10**, 231, doi:10.1038/s41598-019-57112-4 (2020).
- 22 Vandesompele, J. *et al.* Accurate normalization of real-time quantitative RT-PCR data by geometric averaging of multiple internal control genes. *Genome Bio***3**, RESEARCH0034, doi:10.1186/gb-2002-3-7-research0034 (2002).
- 23 Chen, W. C., Tzeng, Y. S. & Li, H. Gene expression in early and progression phases of autosomal dominant polycystic kidney disease. *BMC Res Notes***1**, 131, doi:10.1186/1756-0500-1-131 (2008).
- 24 Hama, T. *et al.* Aberrant Smad3 phosphoisoforms in cyst-lining epithelial cells in the. *Am J Physiol Renal Physiol***313**, F1223-F1231, doi:10.1152/ajprenal.00697.2016 (2017).

- 25 Sato, Y., Yamamura, M., Sasaki, M. & Harada, K. Blockade of Hedgehog Signaling Attenuates Biliary Cystogenesis in the Polycystic Kidney (PCK) Rat. *Am J Pathol***188**, 2251-2263, doi:10.1016/j.ajpath.2018.06.014 (2018).
- 26 Harris, P. C. & Torres, V. E. Genetic mechanisms and signaling pathways in autosomal dominant polycystic kidney disease. *J Clin Invest***124**, 2315-2324, doi:10.1172/jci72272 (2014).
- 27 Menezes, L. F. & Germino, G. G. Murine Models of Polycystic Kidney Disease. *Drug Discov Today Dis Mech***10**, e153-e158, doi:10.1016/j.ddmec.2013.10.002 (2013).
- 28 Rogers, K. A. *et al.* Differences in the timing and magnitude of Pkd1 gene deletion determine the severity of polycystic kidney disease in an orthologous mouse model of ADPKD. *Physiol Rep***4**, doi:10.14814/phy2.12846 (2016).
- 29 Wang, S., Wang, B., He, H., Sun, A. & Guo, C. A new set of reference housekeeping genes for the normalization RT-qPCR data from the intestine of piglets during weaning. *PLoS One***13**, e0204583, doi:10.1371/journal.pone.0204583 (2018).
- 30 Breyer, M. D. & Susztak, K. The next generation of therapeutics for chronic kidney disease. *Nat Rev Drug Discov***15**, 568-588, doi:10.1038/nrd.2016.67 (2016).
- 31 Cui, X., Zhou, J., Qiu, J., Johnson, M. R. & Mrug, M. Validation of endogenous internal real-time PCR controls in renal tissues. *Am J Nephrol***30**, 413-417, doi:10.1159/000235993 (2009).
- 32 Leal, M. F. *et al.* Comprehensive selection of reference genes for expression studies in meniscus injury using quantitative real-time PCR. *Gene***584**, 60-68, doi:10.1016/j.gene.2016.03.005 (2016).
- 33 Dupasquier, S. *et al.* Validation of housekeeping gene and impact on normalized gene expression in clear cell renal cell carcinoma: critical reassessment of YBX3/ZONAB/CSDA expression. *BMC Mol Biol***15**, 9, doi:10.1186/1471-2199-15-9 (2014).
- 34 Olsan, E. E. *et al.* Signal transducer and activator of transcription-6 (STAT6) inhibition suppresses renal cyst growth in polycystic kidney disease. *Proc Natl Acad Sci U S A***108**, 18067-18072, doi:10.1073/pnas.1111966108 (2011).
- 35 Ma, Y., Dai, H., Kong, X. & Wang, L. Impact of thawing on reference gene expression stability in renal cell carcinoma samples. *Diagn Mol Pathol***21**, 157-163, doi:10.1097/PDM.0b013e31824d3435 (2012).
- 36 Caracausi, M. *et al.* Systematic identification of human housekeeping genes possibly useful as references in gene expression studies. *Mol Med Rep***16**, 2397-2410, doi:10.3892/mmr.2017.6944 (2017).
- 37 Li, C. *et al.* Expression of PGAM1 in renal clear cell carcinoma and its clinical significance. *Int J Clin Exp Pathol***8**, 9410-9415 (2015).
- 38 Fonseca, J. M. *et al.* Renal cyst growth is the main determinant for hypertension and concentrating deficit in Pkd1-deficient mice. *Kidney Int***85**, 1137-1150, doi:10.1038/ki.2013.501 (2014).
- 39 Schmid, H. *et al.* Validation of endogenous controls for gene expression analysis in microdissected human renal biopsies. *Kidney Int***64**, 356-360, doi:10.1046/j.1523-1755.2003.00074.x (2003).
- 40 Gholami, K., Loh, S. Y., Salleh, N., Lam, S. K. & Hoe, S. Z. Selection of suitable endogenous reference genes for qPCR in kidney and hypothalamus of rats under testosterone influence. *PLoS One***12**, e0176368, doi:10.1371/journal.pone.0176368 (2017).
- 41 Bustin, S. A. & McKay, I. A. The product of the primary response gene BRF1 inhibits the interaction between 14-3-3 proteins and cRaf-1 in the yeast trihybrid system. *DNA Cell Biol***18**, 653-661, doi:10.1089/104454999315060 (1999).
- 42 Cale, J. M., Millican, D. S., Itoh, H., Magness, R. R. & Bird, I. M. Pregnancy induces an increase in the expression of glyceraldehyde-3-phosphate dehydrogenase in uterine artery endothelial cells. *J Soc Gynecol Investig***4**, 284-292 (1997).

- 43 Puissant, C., Bayat-Sarmadi, M., Devinoy, E. & Houdebine, L. M. Variation of transferrin mRNA concentration in the rabbit mammary gland during the pregnancy-lactation-weaning cycle and in cultured mammary cells. A comparison with the other major milk protein mRNAs. *Eur J Endocrinol***130**, 522-529, doi:10.1530/eje.0.1300522 (1994).
- 44 Calvo, E. L., Boucher, C., Coulombe, Z. & Morisset, J. Pancreatic GAPDH gene expression during ontogeny and acute pancreatitis induced by caerulein. *Biochem Biophys Res Commun***235**, 636-640, doi:10.1006/bbrc.1997.6716 (1997).
- 45 Mansur, N. R., Meyer-Siegler, K., Wurzer, J. C. & Sirover, M. A. Cell cycle regulation of the glyceraldehyde-3-phosphate dehydrogenase/uracil DNA glycosylase gene in normal human cells. *Nucleic Acids Res***21**, 993-998, doi:10.1093/nar/21.4.993 (1993).
- 46 Sikand, K., Singh, J., Ebron, J. S. & Shukla, G. C. Housekeeping gene selection advisory: glyceraldehyde-3-phosphate dehydrogenase (GAPDH) and β -actin are targets of miR-644a. *PLoS One***7**, e47510, doi:10.1371/journal.pone.0047510 (2012).
- 47 Glare, E. M., Divjak, M., Bailey, M. J. & Walters, E. H. beta-Actin and GAPDH housekeeping gene expression in asthmatic airways is variable and not suitable for normalising mRNA levels. *Thorax***57**, 765-770, doi:10.1136/thorax.57.9.765 (2002).
- 48 Nazari, F., Parham, A. & Maleki, A. F. GAPDH, β -actin and β 2-microglobulin, as three common reference genes, are not reliable for gene expression studies in equine adipose- and marrow-derived mesenchymal stem cells. *J Anim Sci Technol***57**, 18, doi:10.1186/s40781-015-0050-8 (2015).
- 49 Araujo, L. C. C., Bordin, S. & Carvalho, C. R. O. Reference Gene and Protein Expression Levels in Two Different NAFLD Mouse Models. *Gastroenterol Res Pract***2020**, 1093235, doi:10.1155/2020/1093235 (2020).
- 50 Zhou, S. M. *et al.* β -actin gene expression is variable among individuals and not suitable for normalizing mRNA levels in *Portunus trituberculatus*. *Fish Shellfish Immunol***81**, 338-342, doi:10.1016/j.fsi.2018.07.021 (2018).
- 51 Weimbs, T., Shillingford, J. M., Torres, J., Kruger, S. L. & Bourgeois, B. C. Emerging targeted strategies for the treatment of autosomal dominant polycystic kidney disease. *Clin Kidney J***11**, i27-i38, doi:10.1093/ckj/sfy089 (2018).
- 52 Talbot, J. J. *et al.* Polycystin-1 regulates STAT activity by a dual mechanism. *Proc Natl Acad Sci U S A***108**, 7985-7990, doi:10.1073/pnas.1103816108 (2011).
- 53 Weimbs, T. & Talbot, J. J. STAT3 Signaling in Polycystic Kidney Disease. *Drug Discov Today Dis Mech***10**, e113-e118, doi:10.1016/j.ddmec.2013.03.001 (2013).
- 54 Takakura, A. *et al.* Pyrimethamine inhibits adult polycystic kidney disease by modulating STAT signaling pathways. *Hum Mol Genet***20**, 4143-4154, doi:10.1093/hmg/ddr338 (2011).
- 55 Leonhard, W. N. *et al.* Curcumin inhibits cystogenesis by simultaneous interference of multiple signaling pathways: in vivo evidence from a Pkd1-deletion model. *Am J Physiol Renal Physiol***300**, F1193-1202, doi:10.1152/ajprenal.00419.2010 (2011).
- 56 Nowak, K. L. & Hopp, K. Metabolic Reprogramming in Autosomal Dominant Polycystic Kidney Disease: Evidence and Therapeutic Potential. *Clin J Am Soc Nephrol***15**, 577-584, doi:10.2215/cjn.13291019 (2020).
- 57 Malas, T. B. *et al.* Prioritization of novel ADPKD drug candidates from disease-stage specific gene expression profiles. *EBioMedicine***51**, 102585, doi:10.1016/j.ebiom.2019.11.046 (2020).
- 58 Piontek, K. B. *et al.* A functional floxed allele of Pkd1 that can be conditionally inactivated in vivo. *J Am Soc Nephrol***15**, 3035-3043, doi:10.1097/01.Asn.0000144204.01352.86 (2004).
- 59 Shillingford, J. M., Piontek, K. B., Germino, G. G. & Weimbs, T. Rapamycin ameliorates PKD resulting from conditional inactivation of Pkd1. *J Am Soc Nephrol***21**, 489-497, doi:10.1681/asn.2009040421 (2010).

60 Balbo, B. E. *et al.* Cardiac dysfunction in Pkd1-deficient mice with phenotype rescue by galectin-3 knockout. *Kidney Int***90**, 580-597, doi:10.1016/j.kint.2016.04.028 (2016).

61 Bastos, A. P. *et al.* Pkd1 haploinsufficiency increases renal damage and induces microcyst formation following ischemia/reperfusion. *J Am Soc Nephrol***20**, 2389-2402, doi:10.1681/asn.2008040435 (2009).

62 Yu, S. *et al.* Essential role of cleavage of Polycystin-1 at G protein-coupled receptor proteolytic site for kidney tubular structure. *Proc Natl Acad Sci U S A***104**, 18688-18693, doi:10.1073/pnas.0708217104 (2007).

63 Andersen, C. L., Jensen, J. L. & Ørntoft, T. F. Normalization of real-time quantitative reverse transcription-PCR data: a model-based variance estimation approach to identify genes suited for normalization, applied to bladder and colon cancer data sets. *Cancer Res***64**, 5245-5250, doi:10.1158/0008-5472.Can-04-0496 (2004).

64 Pfaffl, M. W., Tichopad, A., Prgomet, C. & Neuvians, T. P. Determination of stable housekeeping genes, differentially regulated target genes and sample integrity: BestKeeper–Excel-based tool using pair-wise correlations. *Biotechnol Lett***26**, 509-515, doi:10.1023/b:bile.0000019559.84305.47 (2004).

65 Xie, F., Xiao, P., Chen, D., Xu, L. & Zhang, B. miRDeepFinder: a miRNA analysis tool for deep sequencing of plant small RNAs. *Plant Mol Biol*, doi:10.1007/s11103-012-9885-2 (2012).

66 Mukaka, M. M. Statistics corner: A guide to appropriate use of correlation coefficient in medical research. *Malawi Med J***24**, 69-71 (2012).

Figures

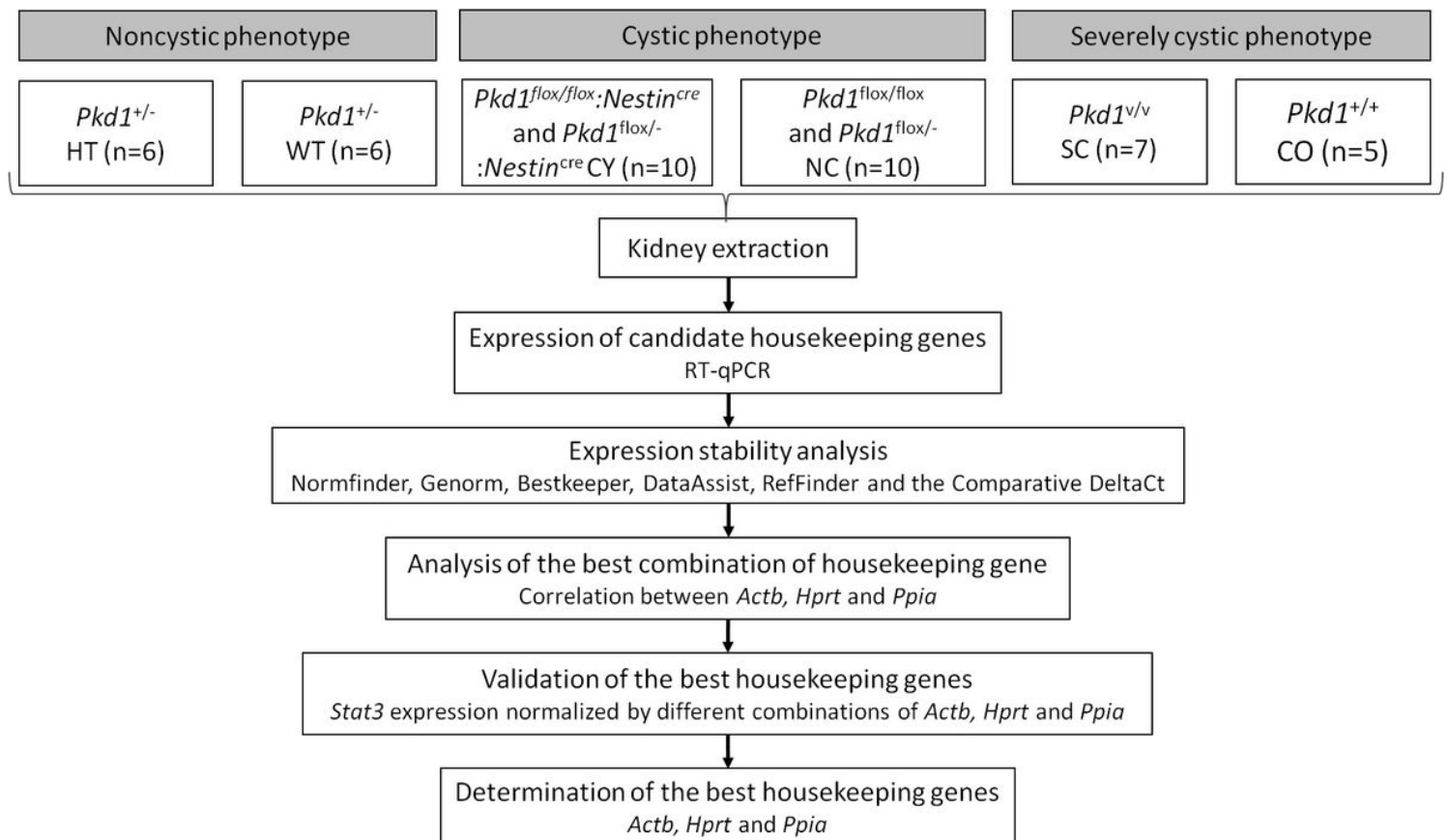


Figure 1

Workflow diagram illustrating the strategy used to identify the best housekeeping normalizer for RT-qPCR studies in Pkd1-deficient kidneys. To proceed with appropriate comparisons, we included housekeeping genes selected from the available literature (Actb, Actg1, B2m, Gapdh, Hprt, Pgam1 and Ppia). Pkd1, polycystic kidney disease 1 gene.

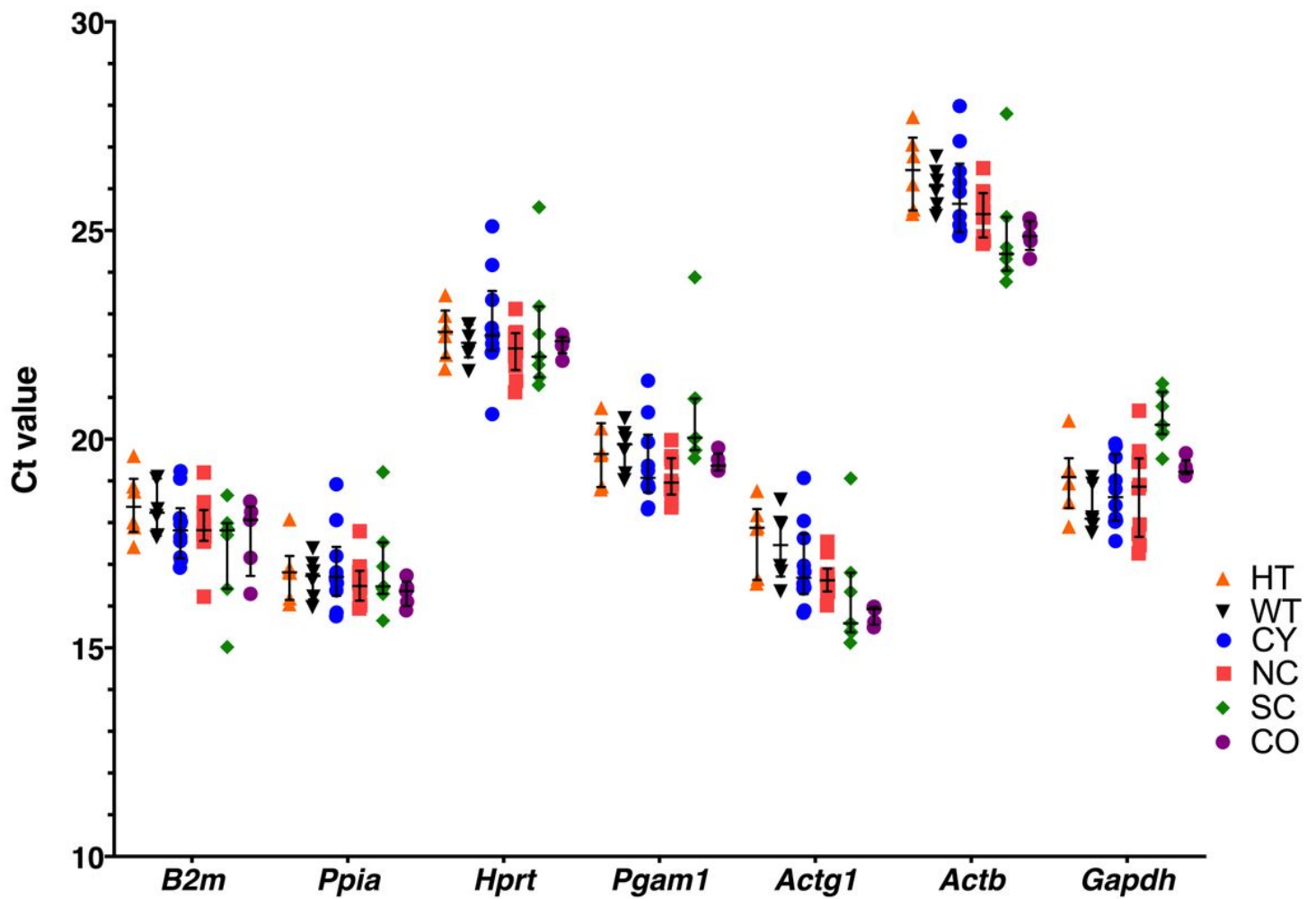


Figure 2

Renal expression profiles of the seven selected candidate housekeeping genes in Pkd1-deficient mouse models. Lower threshold values (Ct) indicate higher expression levels. The median values are expressed as horizontal lines while the error bars represent the corresponding interquartile ranges. The Actb Ct values were the highest ones, reflecting the lowest expression levels whereas the Actg1 Ct values were the lowest, indicating the highest expression.

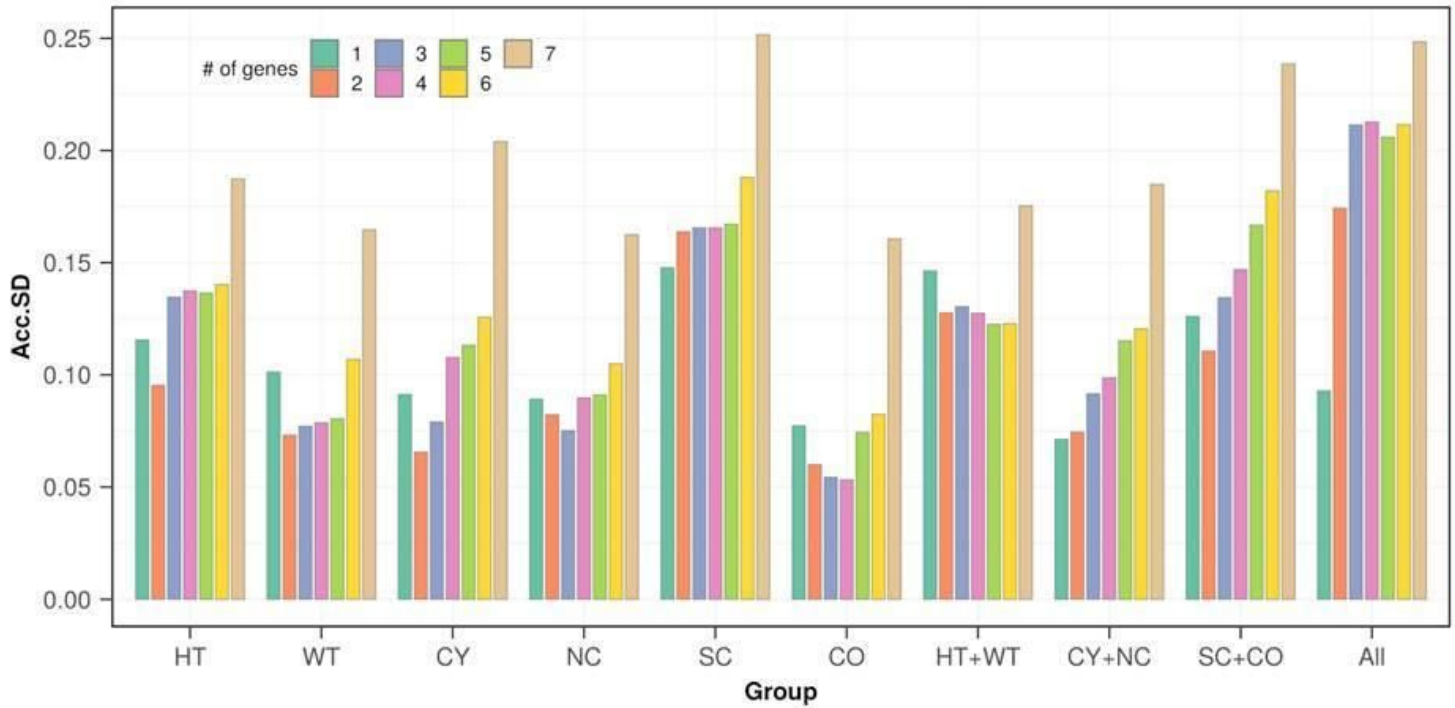


Figure 3

Optimal number of reference genes for each dataset according to GenEx analyses. Accumulated standard deviation (Acc.SD) for the five candidate housekeeping genes in all groups of samples allows estimating the ideal number of genes for normalization. Acc.SD was calculated with the GenEx software package. Lower values of Acc.SD indicate the optimal number of reference genes. HT, Pkd1-haploinsufficient; WT, wild type; CY, cystic; NC, noncystic; SC, severely cystic; CO, control for the severely cystic phenotype.

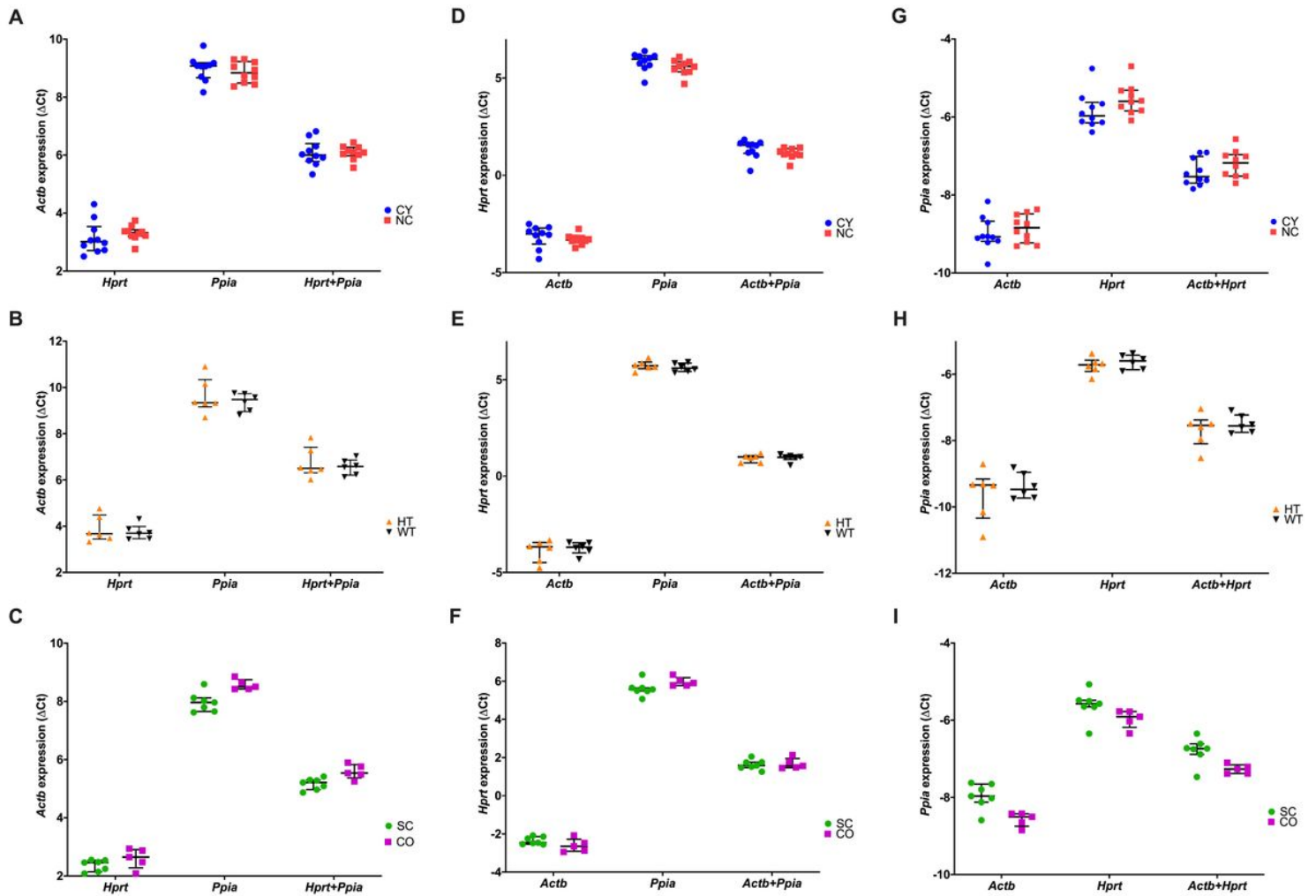


Figure 4

The ΔC_t values of the three best candidate housekeeping genes: Actb (A - C), Hprt (D - F) and Ppia (G - I). A lower threshold value (C_t) indicates a higher gene expression level. The median values are expressed as horizontal lines while the error bars represent interquartile ranges. CY, cystic; NC, noncystic; HT, haploinsufficient; WT, wild type; SC, severely cystic phenotype; CO, control of severely cystic phenotype. Actb, target expression normalized by Actb; Hprt, target expression normalized by Hprt; Ppia, target expression normalized by Ppia; Actb+Hprt, target expression normalized by Actb+Hprt; Actb+Ppia, target expression normalized by Actb+Ppia; Hprt+Ppia, target expression normalized by Hprt+Ppia. Comparisons between the Pkd1-deficient model and its respective control were performed with the Mann-Whitney U test. $P < 0.05$ was not detected for any of the comparisons.

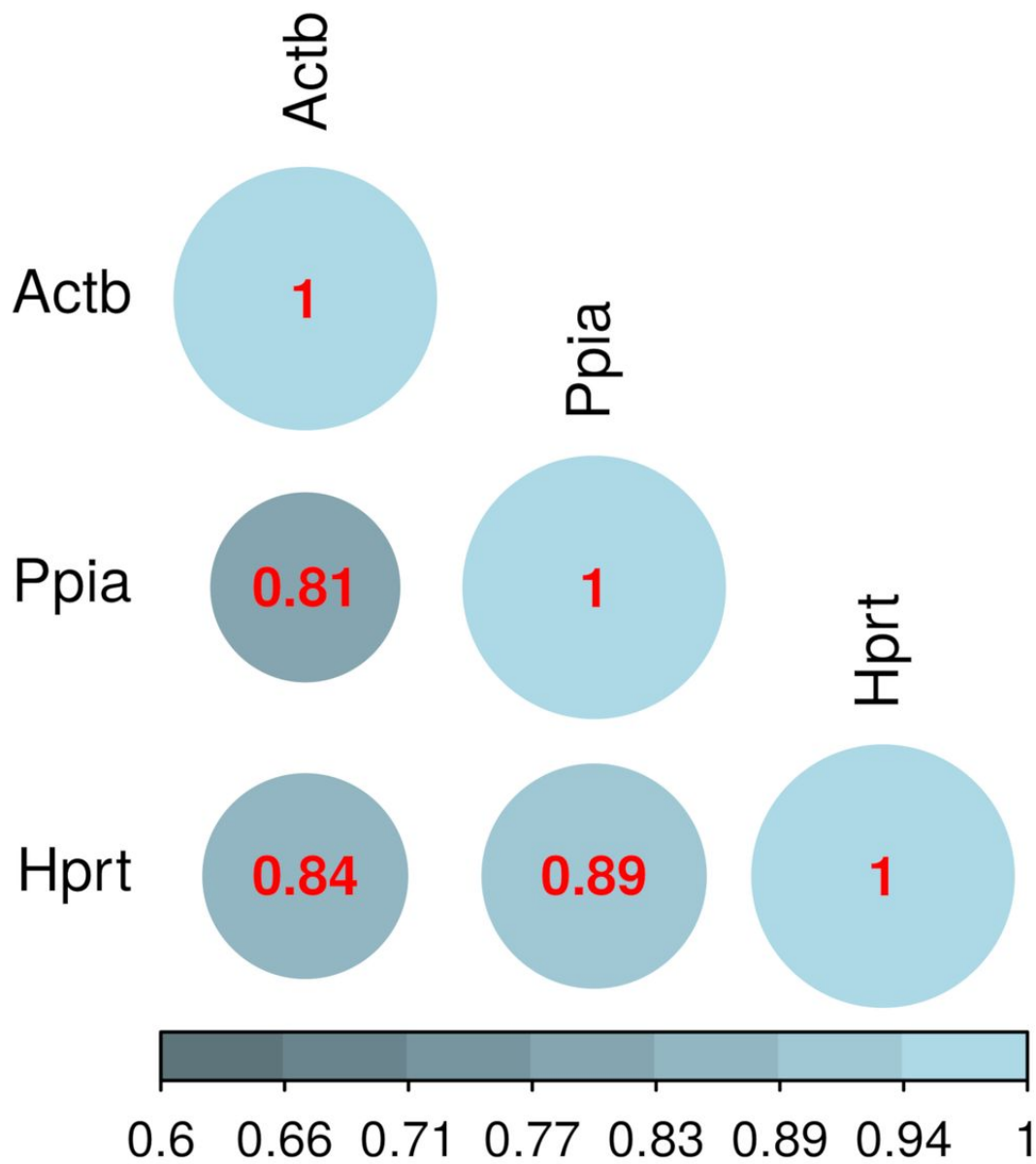


Figure 5

Pair correlation matrix between the number of amplification cycles of the best housekeeping candidate genes Actb, Hprt and Ppia. Circle color and radius are proportional to the Spearman's rank correlation coefficient (significance level: $p < 0.05$).

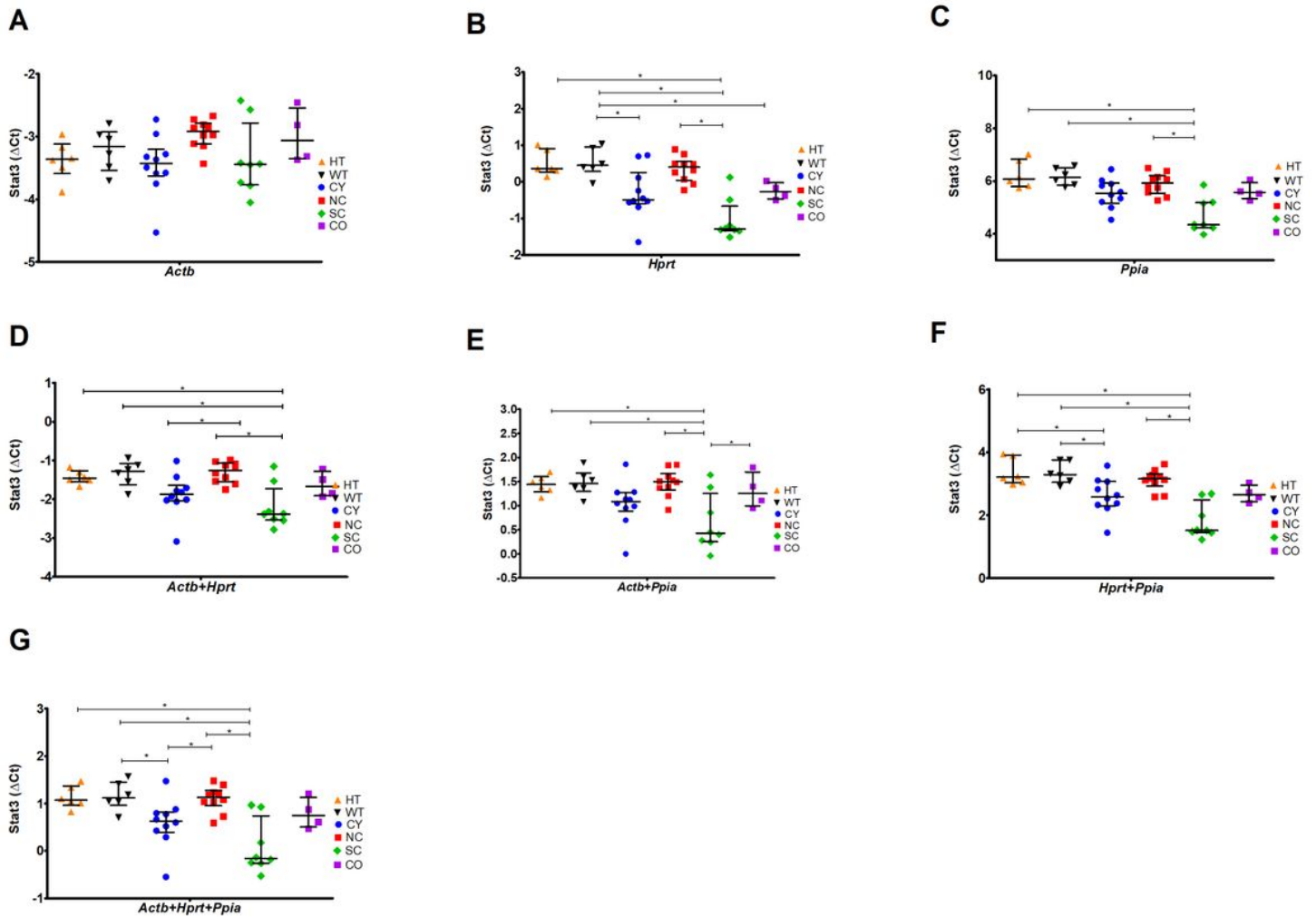


Figure 6

The ΔC_t values of Stat3 expression target gene normalized by different combinations of the three best candidate housekeeping genes (Actb, Hprt and Ppia). The median values are represented as horizontal lines and the error bars represent interquartile ranges. CY, cystic; NC, noncystic; HT, haploinsufficient; WT, wild type; SC, severely cystic phenotype; CO, control for the severely cystic phenotype. Stat3/Actb, target expression normalized by Actb; Stat3/Hprt, target expression normalized by Hprt; Stat3/Ppia, target expression normalized by Ppia; Stat3/Actb+Hprt, target expression normalized by Actb +Hprt; Stat3/Actb+Ppia, target expression normalized by Actb+Ppia; Stat3/Hprt+Ppia, target expression normalized by Hprt+Ppia, Stat3/Actb+Hprt+Ppia target expression normalized by Actb+Hprt+Ppia. * $p < 0.05$ by Kruskal-Wallis with Dunn's post-hoc test, followed by FDR correction.

Supplementary Files

This is a list of supplementary files associated with this preprint. Click to download.

- [SupplementaryMuozAnauateetalHouseKeepingGenesNSR.doc](#)