

Treatment Preference Among Patients With Spinal Muscular Atrophy (SMA): A Discrete Choice Experiment

Alisha Monnette

Tulane University School of Public Health and Tropical Medicine, New Orleans, LA, USA a Department of Health Policy and Management, b Department of Global Community Health and Behavioral Sciences
<https://orcid.org/0000-0002-2117-8188>

Er Chen

Genentech Inc., San Francisco, CA, USA

Dongzhe Hong

Tulane University School of Public Health and Tropical Medicine, New Orleans, LA, USA a Department of Health Policy and Management, b Department of Global Community Health and Behavioral Sciences

Alessandra Bazzano

Tulane University School of Public Health and Tropical Medicine, New Orleans, LA, USA a Department of Health Policy and Management, b Department of Global Community Health and Behavioral Sciences

Stacy Dixon

University of Colorado School of Medicine, Department of Neurology, Aurora, CO, USA

W. David Arnold

The Ohio State University Department of Neurology, Columbus, OH, USA

Lizheng Shi (✉ lshi1@tulane.edu)


Tulane University School of Public Health and Tropical Medicine, New Orleans, LA, USA a Department of Health Policy and Management, b Department of Global Community Health and Behavioral Sciences

Research

Keywords: Spinal muscular atrophy, discrete choice experiment, patient preferences, treatment attributes, nusinersen, onasemnogene abeparvovec-xioi

Posted Date: August 10th, 2020

DOI: <https://doi.org/10.21203/rs.3.rs-54165/v1>

License:  This work is licensed under a Creative Commons Attribution 4.0 International License. [Read Full License](#)

Version of Record: A version of this preprint was published on January 20th, 2021. See the published version at <https://doi.org/10.1186/s13023-020-01667-3>.

Abstract

OBJECTIVE: To examine patient/caregiver preference for key attributes of treatments for spinal muscular atrophy (SMA).

BACKGROUND: In the rapidly evolving SMA treatment landscape, it is critically important to understand how attributes of potential treatments may impact patient/caregiver choices.

DESIGN/METHODS: A discrete choice experiment survey was developed based on qualitative interviews. Patients with SMA (≥18 years) and caregivers of patients were recruited through a U.S. patient organization. Respondents made choices in each of 12 sets of hypothetical treatments. The relative importance of five treatment characteristics was compared (measured by regression coefficients [RC] of conditional logit models): (1) improvement or stabilization of motor function, (2) improvement or stabilization of breathing function, (3) indication for all ages or pediatric patients only, (4) route of administration (repeated intrathecal [IT] injections, one-time intravenous [IV] infusion, daily oral delivery) and (5) potential harm (mild, moderate, serious/life threatening).

RESULTS: Patient ages ranged from less than 1 to 67 years (n=101, 65 self-reported and 36 caregiver-reported) and 64 were female. Total SMA subtypes included: type 1 (n=21), type 2 (n=48), type 3 (n=29), other (n=3). Prior spinal surgery was reported in 47 patients. Nusinersen and onasemnogene abeparvovec-xioi use were reported in 59 and 10 patients, respectively. Improvement in motor and breathing function was highly valued (RC: 0.65, 95% confidence interval [CI]: 0.47–0.83 and RC: 0.79, 95% CI: 0.60–0.98, respectively). Oral medication and one-time infusion were strongly preferred over repeated IT injections (RC: 0.80, 95% CI: 0.60–0.98 and RC: 0.51, 95% CI: 0.30–0.73, respectively). Patients least preferred an age-restricted label/approved use (≥ 2 years of age) (RC: -1.28, 95% CI: -1.47 to -1.09). Cross-attributes trade-off decision suggested a lower willingness for a high-risk therapy despite additional efficacy gain. For some patients, there may be willingness to trade off additional gains in efficacy for a change in route of administration from repeated intrathecal administration to oral medication.

CONCLUSIONS: Improvements in motor/breathing function, broad indication, oral or one-time infusion, and minimal risk were preferred treatment attributes. Treatment decisions should be made in clinical context and be tailored to patient needs.

Introduction

Spinal muscular atrophy (SMA) is a rare and debilitating genetic neuromuscular disease caused by a loss of function mutation or deletion of the survival motor neuron gene 1 (SMN1).^(1–3) It affects one in approximately 15,000 live births.^(4, 5) SMA is characterized by progressive loss of motor neurons, muscle weakness, and atrophy.⁽⁶⁾ There are five primary types of SMA numbered from 0 (most severe) to 4 (least severe), based on age of onset and highest physical milestone achieved. The disease is a continuum from most severe to the milder phenotype form. Patients with type 0, a very rare and the most severe form of SMA, have onset of symptoms at birth and usually die beyond 6 months of age. Type 1 SMA is the most common form of SMA with onset of symptoms between 0–6 months. Patients with type 1 SMA present a number of functional impairments, such as severe hypotonia, progressive loss of motor function, impaired swallowing and respiratory function, and cannot sit independently during their reduced lifespan. Patients with type 2 or type 3 SMA experience disease onset before and after the age of 18 months, respectively. Those with type 2 SMA are unable to stand or walk without support, in contrast to patients with type 3 SMA who are able to stand and walk until the disease progresses. Type 4 SMA onset is in adulthood and that causes milder muscle weakness.⁽⁷⁾

SMA is associated with direct and indirect costs of approximately \$1 billion annually in the United States.(8, 9) Given the rarity of SMA, the direct and indirect costs per capita are close to \$200,000.(10, 11) The latest treatment patterns and economic study on patients with SMA found significantly higher healthcare utilization and costs than the general population.(12) Multiple studies have found substantially higher costs for patients with SMA compared to healthy populations.(10, 11, 13) In addition to impairment on quality of life and social participation among patients with SMA, SMA was associated with reduced caregiver quality of life, which was related to patient burden, impaired psychosocial well-being, and loss of caregiver's productivity.(14–16)

Despite the progress in SMA treatment with two important landmark treatments (approved by the Food and Drug Administration [FDA]), the disease burden and related unmet need remains significant for many patients with SMA and their caregivers.(5) Spinraza® (nusinersen) is a disease-modifying treatment approved for all patients with SMA and is administered via intrathecal (IT) injection every 4 months after a series of loading doses.(17) Nusinersen is a survival motor neuron-2 (SMN2) directed antisense oligonucleotide that enhances production of full length survival motor neuron (SMN) protein. The more recent treatment is Zolgensma® (onasemnogene abeparvovec-xioi), a gene replacement therapy that uses a viral vector to deliver a functional copy of the *SMN1* gene. Onasemnogene abeparvovec-xioi is administered as a one-time intravenous (IV) infusion and is approved for the treatment of children less than 2 years of age.(18) The SMA treatment landscape continues to evolve. The FDA recently granted Priority Review for risdiplam, an orally administered investigational, SMN2 splicing modifier for patients with SMA.(19)

The unique health status and life experience of each patient and family affected by SMA may influence how they perceive meaningful changes with respect to desired benefits or avoided risks from a therapeutic agent. With multiple treatments available, both healthcare professionals, as well as patients and caregivers, have many considerations to consider when deciding on the right treatment choices.(20–23) A 2007 consensus statement, issued by the International Standard of Care Committee for Spinal Muscular Atrophy, to address the 5 priority care areas for SMA, found that for those affected by type 1 SMA, high priority components of meaningful change relate to immediate concerns with breathing, feeding, swallowing, and the ability to communicate.(24) For patients with types 2 and 3 SMA, priorities include disease stabilization, independence and the ability to perform basic personal tasks, and reducing muscle fatigue.(24) In most cases, patients and caregivers perceive benefit in maintenance of current abilities and avoiding decline in function. They indicate that even small improvements in functional abilities would be meaningful, especially if these contribute to the increase in ability to independently perform activities of daily living.(24)

Despite the burden of SMA, little focus has been given to understand how patients and caregivers weigh the possible risks associated with therapies against potential benefits associated with those therapies.(23) Patients' perceptions of benefit-risk are essential to informing the drug approval process and the context in which potential therapies are evaluated. In light of two current SMA treatments and more treatment options on the horizon, a unique window of opportunity arises to assess and characterize preferences of patients and their caregivers on SMA treatment options. Therefore, the primary objectives of this study were to quantify benefit-risk trade-off preferences and to estimate the relative importance of treatment attributes. This study addresses a significant gap in the evidence base for SMA, particularly given patient and caregiver perceptions of benefit-risk tradeoffs that inform the patient-centered value framework for the innovative therapies. Further, this study has the ability to provide evidence to support the need for informed joint treatment decision making for SMA patients by educating providers to understand patient and family preferences, and informing payers about the unique role each therapy may bring; thus, allowing equitable benefit design so patients have access to treatments that work best for them.

Methods

Study Design

We designed and administered a discrete choice experiment (DCE) survey with input from SMA specialists and CureSMA, a U.S organization that provides support to patients and families affected by SMA and funds and directs research for SMA. Specifically, the study asked for patient/caregiver's preferences for treatment characteristics such as route of administration, mechanism of action, safety, efficacy, treatment schedule, clinical data availability, and out-of-pocket costs. The theoretical background and rationale supporting DCEs have been discussed in detail by Johnson et al. in a report that summarizes good research practices for constructing DCEs.(25)

In a DCE, respondents must choose their most preferred treatment alternative from two hypothetical treatment profiles, assuming that these are the only treatment options available. DCEs therefore allow one to compare the relative importance of various treatment attributes. The DCE survey instrument requires constructing a series of 8 to 12 trade-off questions that evaluate SMA treatments for patients. Each hypothetical treatment profile consists of combinations of attribute levels. Figure 1 displays a screenshot of the actual survey instrument. The image shows an example of how a question is displayed. In general, the survey questionnaire should be completed within 20–25 minutes. The combination of attributes and levels that respondents evaluate in a choice-experiment survey is known as the experimental design. These combinations must have statistical properties that allow estimating the preference weights of interest.

Study Population

Patients (aged ≥ 18 years) and caregivers of SMA patients with SMA types 1–4 were recruited through CureSMA. Respondents were included in the study if they were able to read and understand English, to provide informed consent and complete the survey instrument, and willing to participate in the study. The study was approved by Tulane University Institutional Review Board (Study Number: 2018–2197).

Survey Instrument Development

Prior to developing the survey instrument, a comprehensive literature review was conducted to identify important treatment characteristics (also known as attributes) in SMA. The attributes chosen for inclusion in this study had to meet three criteria: (1) clinically relevant and address potential concerns of physicians and other decision makers who make treatment recommendations or reimbursement decisions (i.e. content validity), (2) meaningful and salient to study respondents (i.e. face validity), and (3) supported by evidence as through literature reviews, focus groups, or other scientific methods.(26, 27)

The number of attributes that can be accommodated in a choice-experiment survey instrument depends on the complexity of the trade-off task, the degree of familiarity the respondents have with the attributes included in the trade-off tasks, respondent attentiveness in answering survey questions, and the number of respondents participating in the survey. Task difficulty increases with the number of attributes and the number of attributes that are probabilistic. Measurement error increases with task difficulty, which decreases the precision with which preference weights can be estimated for any given sample size.(26, 27) Therefore, the number of attributes included in the final survey instrument were limited to those that are necessary to answer the research question and that meet the criteria outlined above.

A choice-experiment study design with five attributes, each with two to five levels, and eight to ten choice questions per respondent requires approximately 100 respondents to estimate a preference model with acceptable precision for all parameters.(26) Since the DCE study, for which this instrument is designed, aims to enroll 100 subjects, five attributes in the final survey instrument were needed. Thus, following the literature review, eight attributes were subject to pretesting through qualitative interviews conducted on three patients and one caregiver as well as two specialty providers for SMA to validate the treatment characteristics and narrow down the attributes to five. In addition to the final five attributes included in the survey, we also captured clinical information and demographics about the respondents, both for patients and caregivers, such as age, sex, race/ethnicity, employment status, income level, insurance status, education level, marital status, SMA treatment history and status, and clinical history including past surgeries.

Once the survey instrument was developed, we conducted one-on-one, semi-structured cognitive interviews with a convenience sample of respondents (i.e., patients with SMA and caregivers). Cognitive interviews were done to test the understandability of the survey instrument, the appropriateness of descriptive information, and the cognitive burden of the trade-off questions. We conducted pilot testing by interviewing five respondents with SMA. All interviews were conducted via teleconference or video-conference.

During the pretest interview, respondents were asked to complete the draft survey in field condition, or if the respondent preferred, the interview was completed while the researcher (AB) followed along on-screen during the completion of the interview. After completing the survey in this manner, respondents were asked a series of debriefing questions to determine whether they understood the definitions and instructions, accepted the hypothetical context of the survey, and successfully completed the choice questions in the survey instrument as instructed. All pretest interviews were conducted by a research member (AB) who had extensive experience interviewing survey respondents; and a second researcher observed to ensure quality control. The pretest interviews ensured that all changes to the survey instrument were working as expected and assessed how long it would take respondents to complete the survey under field conditions. Using the findings from the pretest interviews, the survey was finalized and programmed on a web-based survey platform, REDCAP.(28) Table 1 displays the treatment attributes and levels.

Table 1
Treatment Attributes and Levels

Category	Attribute	Levels	Code
Motor Function	Level of change in motor function	Stable	1
		Better	2
Breathing Function	Level of change in breathing function	Stable	1
		Better	2
Indication	Drug is approved for	Pediatric and adult patients with SMA	1
		Pediatric patients with SMA only (e.g., < 2 years of age)	2
Route and Frequency of Administration	Route and frequency of treatments	Intravenous (IV) infusion – one-time treatment	1
		Intrathecal (IT) spinal injection – 3–6 times per year	2
		Oral – daily medication	3
Potential Harm	Treatments potentially raise severity of harm to patients	Mild risk which may involve minimal or non-invasive medical intervention	1
		Moderate risk which may require medical intervention (possibly invasive), but not life threatening	2
		Serious, or life-threatening risk which may require urgent medical intervention or prolonged hospitalization	3

The web-based survey instrument was administered remotely through an email-invitation to up to 100 respondents. Patients and caregivers were enrolled by consent through electronically signing an informed consent and an incentive, valued at \$50.00 USD, was issued (via mail or e-mail) to compensate for their time.

Sample Size

Sample size was estimated based on the main effects in our statistical model by Louvier’s sample size estimation method.(29) Sample-size calculations represent a challenge in the choice experiment.(30) The minimum sample size depends on a number of criteria including the question format, the complexity of the choice task, and the desired precision of the results.(29) Based on the literature, a choice-experiment study design with 5 attributes, each with 2–3 levels, and 8 to 12 choice questions per respondent requires approximately 50–100 respondents to estimate a preference model with acceptable precision for all parameters.(31) Therefore, we aimed to recruit 80 patients and 20 caregivers, based on the suggestions from SMA specialists and CureSMA, as majority of people that are registered and actively participate within the CureSMA network are adult patients. This sample size was deemed sufficient to estimate the main effects in our statistical model by Johnson and Orme method.(30)

Discrete Choice Experiment / Statistical Analysis

Based on the treatment attributes, each respondent received a series of 12 trade-off questions that evaluate SMA treatments for patients and caregivers. A D-optimal algorithm was used to construct a fractional factorial experimental design.(32) A total of 12 pairs in the experimental design were generated to estimate both main

effects and possible selected interaction effects. Main effects included the preference weight for each attribute level independent of the other attributes and levels included in the study. Interaction effects tested whether the effect of one attribute level was independent of the other attributes and levels in the study. Descriptive statistics were performed on demographic and clinical characteristics.

To investigate preferences for SMA therapies, a theoretical framework based on a conditional logit model was employed to allow attribute coefficients to vary across respondents, accounting for preference heterogeneity and improving the realism of model assumptions.⁽³³⁾ Conditional logit models adjusted the standard errors of utility estimates to account for repeated choices by the same individual.

The results of this analysis include estimating log-odds relative preference weights and odds-ratio tests. All estimates were reported with 95% confidence intervals. Additionally, we controlled for the effect on preference estimates of respondent-specific health history and current disease conditions as well as other individual characteristics. These results allowed us to calculate: (1) predicted choice shares for two treatments with specified attribute levels, indicating the predicted proportion of respondents who would choose each treatment profile, and (2) relative importance of attributes over the ranges of attribute levels included in the DCE.

Results

There were 101 respondents (65 self-reported patients and 36 caregivers) included in the analysis. Table 2 displays the clinical and demographic characteristics of both patients and caregivers. Patient ages ranged from less than 1 year old to 67 years old, 64% were female, and 81% were white. The household income across respondents varied with 21% having less than \$25,000 and 22% of respondents having \$100,000 or more.

Table 2
Demographic characteristics for SMA patients and caregivers (N = 101)

	Patient (n = 65)	Patient represented by caregiver (n = 36)	Caregiver (n = 36)
Age, years (SD)	36 (12.1)	10 (12.2)	38 (10.9)
Age range, years	18 to 67	0.2 to 42	23 to 69
Gender, n (%)			
Male	18 (27.7)	17 (47.2)	
Female	46 (70.8)	19 (52.8)	
Prefer not to answer	01 (01.5)		
Race, n (%)			
White	56 (86.2)	26 (72.2)	
Black	02 (03.1)	04 (11.1)	
Asian	06 (09.2)	01 (02.8)	
Don't know/Prefer not to answer	01 (01.5)	05 (13.9)	
Hispanic or Latino, n (%)			
Yes	03 (04.6)	13 (36.1)	
No	60 (92.3)	22 (61.1)	
Don't know/Prefer not to answer	02 (03.1)	01 (02.8)	
Marital Status, n (%)			
Single	40 (61.5)		07 (19.4)
Married	22 (33.8)		28 (77.8)
Separated/divorced/widowed	03 (04.6)		01 (02.8)
Family income in last 12 months, n (%)			
\$100,000 or more	16 (24.6)		06 (16.7)
\$75,000 to \$99,999	05 (07.7)		05 (13.9)
\$50,000 to \$74,999	11 (16.9)		11 (30.6)
\$25,000 to \$49,999	09 (13.8)		06 (16.6)
Less than \$25,000	14 (21.5)		07 (19.4)
Don't know/Prefer not to answer	10 (15.4)		01 (02.8)

Table 3 presents the clinical and disease characteristics for SMA patients. In total, there were 21 patients with type 1 SMA, 48 patients with type 2 SMA, 29 patients with type 3 SMA, and 1 patient with type 4. A majority of patients (68%) had their first symptoms before they were 18 months old. 58% of patients were on nusinersen at the time of

survey completion. Almost half of the study respondents reported motor function without assistance (42%) and 84% reported breathing function without mechanical support.

Table 3
Clinical characteristics for SMA patients (N = 101)

	Patient (n = 65)	Patient represented by caregiver (n = 36)
Age range when first diagnosed with SMA	6 mos. to 59 yrs.	prenatal to 26 yrs.
Age when first symptoms associated with SMA, n (%)		
< 6 months old	13 (20.0)	18 (50.0)
6–18 months old	30 (46.2)	11 (30.5)
18 months – 3 years old	13 (20.0)	03 (08.3)
4–18 years old	07 (10.8)	01 (02.7)
>18 years old	02 (03.1)	02 (05.5)
Type of SMA, n (%)		
Type 1	04 (6.15)	17 (47.22)
Type 2	33 (50.77)	15 (41.67)
Type 3	27 (41.54)	02 (05.55)
Type 4	01 (1.54)	0
Unknown	0	02 (05.55)
Self-reported level of physical (motor) functioning or ability, n (%)		
Walking alone	8 (12.31)	1 (2.77)
Sitting without support	23 (35.38)	10 (27.78)
Walking with assistance	7 (10.77)	3 (8.33)
Standing with assistance	1 (1.54)	1 (2.77)
Hands and knee crawling	0	2 (5.55)
No motor function	3 (4.62)	3 (8.33)
None of the above; have some motor function	23 (35.38)	16 (44.44)
Self-reported breathing ability, n (%)		
Can breathe without mechanical support	55 (84.61)	29 (80.55)
Need mechanical support to breathe for some of the day	7 (10.77)	3 (8.33)
Need mechanical support to breathe for most of the day	1 (1.54)	0
Need 24-hour mechanical support to breathe	2 (3.08)	4 (11.11)
Other illness limits daily activities, n (%)		

	Patient (n = 65)	Patient represented by caregiver (n = 36)
Yes	10 (15.38)	2 (5.55)
Current Treatment, n (%)*		
Supportive care only (not currently using a medical treatment for SMA)	14 (21.54)	6 (16.67)
Spinraza® (Nusinersen)	41 (63.08)	18 (50.00)
Zolgensma® (Onasemnogene Apeparvovec-xioi)	0	10 (27.78)*
Other	1 (1.54)	0
None	9 (13.84)	3 (11.11)
Surgeries before, n (%)*		
Spinal fusion	32 (49.23)	7 (19.44)
Spinal rods	24 (36.92)	8 (22.22)
Gastrostomy (G-tube)	9 (13.84)	11 (30.56)
Joint contracture	4 (6.15)	0
Tracheotomy	6 (9.23)	8 (22.22)
None	26 (40.00)	17 (47.22)
Current tools/equipment use, n (%)*		
Breathing machine/mechanical ventilation	15 (23.1)	11 (30.56)
Feeding tube	5 (7.7)	10 (27.78)
Suction machine to help clear throat	13 (20.0)	16 (44.44)
Cough assist machine	22 (33.8)	24 (66.67)
Walking frame	2 (3.1)	2 (5.55)
Wheelchair	53 (81.5)	20 (55.56)
Other	13 (20.0)	9 (25.00)
None	6 (9.23)	6 (16.67)
*Answer options are not mutually exclusive of one another. Mos.: Months. Yrs.: Years.		

Figure 2 and Appendix Table 1 present the conditional logit model estimates for the SMA treatment preferences. Overall, better improvement in motor and breathing function was highly valued (regression coefficient (RC): 0.65, 95% confidence interval [CI]: 0.47–0.83 and RC: 0.79, 95% CI: 0.60–0.98, respectively); and oral medication and one-time infusion were strongly preferred over repeated IT injections (RC: 0.80, 95% CI: 0.60–0.98 and RC: 0.51, 95% CI: 0.30–0.73, respectively). Patients least preferred an age-restricted label/approved use (≤ 2 years of age) and serious/life threatening risk (RC: -1.28, 95% CI: -1.47 to -1.09 and RC: -1.83, 95% CI: -2.11 to -1.60, respectively).

In the overall survey sample, when changing the route of admission from repeated IT injections to one-time IV injection, the results yield approximately 0.78 (0.51/0.65) times as much utility as increasing efficacy from stabilization to better improvement in motor function, signifying a preference for higher efficacy. On the other hand, changing route of admission from repeated IT injections to oral daily medication yields approximately 1.2 (0.80/0.65) times as much utility as increasing efficacy from stabilization to better improvement in motor function. All of the findings suggested a much greater preference weight was given to the oral daily administration, rather than IV injection. Likewise, reducing side effect severity from 'moderate risk' or 'serious, life-threatening' to 'mild risk' yields approximately 1.2 (0.76/0.65) and 2.9 (1.86/0.65) times as much utility, respectively, as increasing efficacy from stabilization to better improvement in motor function, signaling a stronger preference for risk minimization over additional efficacy gain.

The cross-attribute results related to breathing, such as preference on oral administration and risk aversion were similar to those of motor function. Changing the route of admission from repeated IT injections to one-time IV injection, the results yield approximately 0.65 (0.51/.79) times as much utility as increasing efficacy from stabilization to better improvement in breathing function. Changing route of admission from repeated IT injections to oral daily medication yields approximately 1.0 (0.80/0.79) times as much utility as increasing efficacy from stabilization to better improvement in breathing function. Moreover, when looking at reducing potential side effect severity from 'moderate risk' or 'serious, life-threatening' to 'mild risk' yields approximately 0.96 (0.76/0.79) and 2.4 (1.86/0.79) times as much utility, respectively, as increasing efficacy from stabilization to better improvement in breathing function.

Figure 3 and Appendix Table 2 present the conditional logit model estimates for SMA treatment preferences by multiple sub-groups: (1) Types of SMA – type 1, type 2, and type 3; (2) Age groups – ≤ 2 years, 3–17 years, and > 18 years; (3) Gene Therapy – Yes/No, (4) Nusinersen – Yes/No; (5) Spinal surgery – Yes/No. Regardless of subgroup, all groups preferred improvement in both motor and breathing function than stabilization of these functions, all else being equal. Improvement in breathing function is valued more than in motor function for patients with type 1 and 2 SMA whereas improvement in motor function is more important for patients with type 3 SMA. When evaluating who the drug is approved for, all subgroups preferred drugs that were approved for adults and children. However, this was no longer significant when examining the subgroups of children (e.g., age ≤ 2 years old, and 3–17 years) and those who were on gene therapy, as caregivers did not have a preference as to who the drug was approved for. When evaluating the route and the frequency of treatments, all subgroups preferred the oral daily medication. Interestingly, those who were not currently under nusinersen treatment, were less likely to prefer the one-time IV infusion rather than the IT spinal injection that is done 3–6 times per year (RC: -0.65, p-value < 0.05). A related point to consider is that a stronger preference for the oral daily medication over repeated IT spinal injection was found when examining the subgroup of patients who had previous spinal surgeries than in the overall sample. The preference for oral daily is independent of SMA treatments patients were receiving at the time of the survey (except for patients not receiving nusinersen treatment).

Discussion

The treatment landscape for SMA has undergone tremendous changes with two FDA approved therapies becoming available in the last few years. It is therefore critically important to understand how patients and caregivers view treatment choices. This study is the first-ever discrete choice experiment to characterize decision-making and benefit-risk trade-offs for SMA treatment characteristics. These findings can inform the perceptions and preferences

of SMA patients and their caregivers to stakeholders including regulators, patients, patient advocacy group such as CureSMA, and providers.

Across patient-centered treatment attributes to address the variety and severity of impairments and disabilities that accompany SMA, findings from this study identified the overall preferred treatment attributes including improvement in motor function, breathing function, oral administration, broad indication without age limits, and minimal risk. Overall, the preference on treatment characteristics were quite robust across demographic groups and clinical subgroups. Respondents' age, sex, SMA type and associated characteristics (e.g., age of diagnosis < 18 months), did not show a difference in direction of conditional logit estimates for patient preference.

Not surprisingly, improvement in motor and breathing function were highly valued over stabilization of each function, regardless of subgroup. For breathing function, the strength in preference for improvement over stabilization was the greatest among patients with the greatest severity of disease. One-time IV infusion and oral daily are preferred frequency of treatments vs. repeated IT administration across all SMA patients ($\beta = 0.80$). The preference is even stronger for oral daily among very young patients ($\beta = 1.01$), adult patients ($\beta = 0.92$), and patients with previous spinal surgeries ($\beta = 1.12$). Those not currently under an IT injection treatment, were less likely to prefer the one-time IV infusion rather than the IT spinal injection that is done 3–6 times per year (RC: -0.65, p -value < 0.05). This finding warrants further research.

The route of administration is an important treatment attribute because of the challenges of IT administration for SMA patients, particularly for those with severe scoliosis and spinal surgeries. The challenge of IT treatment may be further complicated by its treatment burden (travel, time from school/work) to receive IT injection among adults which may provide reasoning as to why oral route of administration was preferred. It is surprising that respondents expressed a stronger preference for oral daily administration than the one-time IV infusion except for those who were treated with gene replacement therapy. One possible explanation might be that although all treatment profiles are hypothetical in this experimental design, patients and caregivers would have naturally associated treatment attributes to actual approved treatments, as such one-time treatment may have suggested gene replacement therapy for some patients, which may have influenced treatment preference. Moreover, broad indication is strongly preferred for all patients except those ≤ 2 years of age, which currently have an effective gene replacement therapy available for this age group.

In using this DCE methodology, it is important to evaluate the preferences in the context of other features, examining the relative size of those preferences compared to other preferences. In doing so, the cross-attribute results found that for most patients (e.g., very young patients, adult patients, or patients with spinal surgeries), there may be willingness to trade off higher efficacy for less invasive, less risk, and more convenient route and frequency of treatment. When reducing side effect severity from 'moderate risk' to 'mild risk' the utility was 20% more than utility of moving from stabilization to better improvement in motor function. When reducing side effect severity from 'serious, life-threatening' to 'mild risk', this ratio was more than 5 times greater yielding 2.9 (1.86/0.65) times as much utility, as increasing efficacy from stabilization to improvement, suggesting a stronger preference for risk minimization over additional efficacy gain.

Likewise, the utility of changing from repeated IT injections to oral daily medication was 20% more than the utility of moving from stabilization to improvement; for adults, this ratio was about 50% more. These findings are consistent with previous research that has found stabilization in treatment to be highly meaningful (34), and although improvement in treatment is obviously preferred if given in comparison alone, patients would prefer to

maintain stabilization if that means other treatment attributes would be prioritized (i.e. route of administration, side-effect severity, etc.). In a European SMA survey conducted by Rouault et al. (2017), the authors found that 96.5% of respondents believed that “stabilization of their current clinical state through treatment would represent progress.”(34) These findings demonstrate that SMA patients and caregivers deem stabilization as a very meaningful marker for their quality of life. This should be taken into consideration by clinicians and drug manufacturers, when developing new drugs and understanding benefits and risks associated with such treatments.

A previous study assessing patients’ perceptions of benefit-risk decision-making for SMA therapies found no strong correlations between risk tolerance and patient/disease attributes.(35) However, this was before the approval of any therapeutic options. Now that new treatment options are available to patients, the benefit-risk decision making we observed in this study found that patients had a lower willingness for high risk therapies even if the benefit trade-off was higher.

Evaluating patient preferences in our study should be interpreted in the context of two innovative treatments used by some of the study respondents as two important subgroups (i.e. onasemnogene abeparvovec-xioi and nusinersen), although the use of gene replacement therapy in our study only represents a small sample size. A comparison on the conditional logit estimates found that the preferences between nusinersen users and non-users were quite similar, except for the strong preference for oral daily administration among those receiving nusinersen (repeated IT spinal injection). The Pacione et al. (2019) qualitative study on the perspectives of nusinersen treatment, characterized the patients/caregivers with SMA who did not want or were unsure about nusinersen and found that their decision about pursuing nusinersen treatment was quite nuanced, challenging and context-specific. (36)

It is important to note that all treatments presented to patients and caregivers in this study are hypothetical and were automatically generated by computers. As such, one is supposed to not associate the preference (or lack of) for certain treatment attributes to actually approved treatments and treatments currently being developed. We recognized that it may be inevitable that a distinct treatment attribute may be linked to a specific treatment and/or patient experience with such a treatment, which may have influenced treatment choices. For example, the actual 10 gene-replacement therapy users did not appear to prefer the oral daily administration, and instead had a strong preference for the one-time IV administration, which may suggest the experience of one-time IV gene transfer is well tolerated and could be appealing for patients who are eligible.

With new treatments potentially turning a life-threatening disease into a chronic disease, clinicians may need to conform to a patient-centered care model that prioritizes a patient’s/family’s values, goals, and knowledge as well as patient’s self-awareness. The attention to the values and priorities from clinicians may create a shared decision making between patients and providers.

There were several limitations in the study. First, the survey sample was drawn from a SMA patient organization membership database, representing a highly informed and engaged patient population, and therefore the results may not represent all SMA patients in the United States. In particular, our sample only had one patient with type 4 SMA. Second, SMA type, motor function, and treatment status were self- or caregiver-reported. No attempts were undertaken to verify such information. Third, although affordability was a concern for many patients and caregivers, patient out-of-pocket cost was not included in the treatment profile due to administration burden and sample size limitation. Furthermore, a number of factors beyond the efficacy and side effects of treatment may influence perception and preferences on treatment characteristics among patients with SMA including disease

knowledge, transportation needs, and functional status as well as insurance approval or financial assistance for very expensive SMA treatments. These factors may also interact with each other with large scope of complexity and difficulty involved in the treatment decisions for patients with SMA. In regard to availability of actual treatments on the market, preference of one attribute may be confounded by related attributes based on actual, approved SMA treatments on the market (e.g. association of one-time infusion with gene therapy). Lastly, the hypothetical treatment attributes and levels may over-simplify any treatment in the real world; treatment decision has to be made in clinical context and tailored to patient specific needs.

Conclusion

Improvement in motor function, breathing function, broad indication, oral daily administration, and minimal risk are preferred treatment attributes among all SMA patients. Cross-attributes trade-off decision suggested a lower willingness for a high-risk therapy despite additional efficacy gain. For some patients, there may be willingness to trade off additional gains in efficacy for a change in route of administration from repeated IT administration to oral medication. Patient preference and clinical context should be an integral part of treatment decision process and tailored to individual patient needs.

List Of Abbreviations

DCE	Discrete choice experiment
FDA	Food and Drug Administration
IT	Intrathecal
IV	Intravenous
RC	Regression coefficient
SMA	Spinal muscular atrophy
SMN	Survival motor neuron
SMN2	Survival motor neuron-2 (SMN2)

Declarations

Acknowledgements: All authors thank the assistance of recruitment from the CureSMA, a SMA patient advocacy organization.

Authors' contributions: All authors contributed to the conception and design of the study, and to interpretation of the results. Specifically, SD, DA ER, LS, AB contributed to protocol development. AM managed patient recruitment, data collection including patient data entered on redcap, study regulatory, and patient follow up for data. DH conducted the statistical analysis. All authors contributed to the drafting of the paper or to revising it critically for intellectual content. All authors gave final approval of the version to be published and agree to be accountable for all aspects of the work.

Availability of data and materials: The datasets generated and/or analyzed during the current study are not publicly available due to patient confidentiality and the consent agreement but are available from the corresponding author

on reasonable request.

Competing interests: The authors declare that they have no competing interests.

Consent for publication: Not applicable

Funding: This study was funded by Genentech Inc.

Ethics approval and consent to participate: Respondents were included in the study if they were able to read and understand English to provide informed consent and complete the survey instrument, and willing to participate in the study. The study was approved by Tulane Institutional Review Board (Study Number: 2018-2197).

References

1. Farrar MA, Kiernan MC. The Genetics of Spinal Muscular Atrophy: Progress and Challenges. *Neurotherapeutics*. 2015;12(2):290–302.
2. Kolb SJ, Kissel JT. Spinal Muscular Atrophy. *Neurol Clin*. 2015;33(4):831–46.
3. Arnold WD, Kassar D, Kissel JT. Spinal muscular atrophy: Diagnosis and management in a new therapeutic era. *Muscle Nerve*. 2015;51(2):157–67.
4. Haaker G, Fujak A. Proximal spinal muscular atrophy: current orthopedic perspective. *Appl Clin Genet*. 2013;6(11):113–20.
5. D'Amico A, Mercuri E, Tiziano FD, Bertini E. Spinal muscular atrophy. *Orphanet Journal of Rare Diseases*. 2011;6(1):71.
6. Lefebvre S, Bürglen L, Reboullet S, Clermont O, Burlet P, Viollet L, et al. Identification and characterization of a spinal muscular atrophy-determining gene. *Cell*. 1995;80(1):155–65.
7. Lunn MR, Wang CH. Spinal muscular atrophy. *Lancet*. 2008;371(9630):2120–33.
8. Larkindale J, Yang W, Hogan PF, Simon CJ, Zhang Y, Jain A, et al. Cost of illness for neuromuscular diseases in the United States. *Muscle Nerve*. 2014;49(3):431–8.
9. Group L. Cost of Amyotrophic Lateral Sclerosis, Muscular Dystrophy, and Spinal Muscular Atrophy in the United States: Final Report for Muscular Dystrophy Association. 2012.
10. Droege M, Sproule D, Arjunji R, Gauthier-Loiselle M, Cloutier M, Dabbous O. Economic burden of spinal muscular atrophy in the United States: a contemporary assessment. *Journal of Medical Economics*. 2019:1–10.
11. Armstrong EP, Malone DC, Yeh W-S, Dahl GJ, Lee RL, Sicignano N. The economic burden of spinal muscular atrophy. *J Med Econ*. 2016;19(8):822–6.
12. 12.
13. Cardenas J, Menier M, Heitzer MD, Sproule DM. High Healthcare Resource Use in Hospitalized Patients with a Diagnosis of Spinal Muscular Atrophy Type 1 (SMA1): Retrospective Analysis of the Kids' Inpatient Database (KID). *PharmacoEconomics - Open*. 2019;3(2):205–13.
14. López-Bastida J, Peña-Longobardo LM, Aranda-Reneo I, Tizzano E, Sefton M, Oliva-Moreno J. Social/economic costs and health-related quality of life in patients with spinal muscular atrophy (SMA) in Spain. *Orphanet Journal of Rare Diseases*. 2017;12(1):141.

15. Farrar MA, Carey KA, Paguinto S-G, Chambers G, Kasparian NA. Financial, opportunity and psychosocial costs of spinal muscular atrophy: an exploratory qualitative analysis of Australian carer perspectives. *BMJ open*. 2018;8(5):e020907.
16. Kruitwagen-van Reenen ET, van der Pol L, Schroder C, Wadman RI, van den Berg LH, Visser-Meily JMA, et al. Social participation of adult patients with spinal muscular atrophy: Frequency, restrictions, satisfaction, and correlates. *Muscle Nerve*. 2018;58(6):805–11.
17. Finkel RS, Mercuri E, Darras BT, Connolly AM, Kuntz NL, Kirschner J, et al. Nusinersen versus Sham Control in Infantile-Onset Spinal Muscular Atrophy. *N Engl J Med*. 2017;377(18):1723–32.
18. Mendell JR, Al-Zaidy S, Shell R, Arnold WD, Rodino-Klapac LR, Prior TW, et al. Single-Dose Gene-Replacement Therapy for Spinal Muscular Atrophy. *N Engl J Med*. 2017;377(18):1713–22.
19. Ratni H, Ebeling M, Baird J, Bendels S, Bylund J, Chen KS, et al. Discovery of Risdiplam, a Selective Survival of Motor Neuron-2 (SMN2) Gene Splicing Modifier for the Treatment of Spinal Muscular Atrophy (SMA). *J Med Chem*. 2018;61(15):6501–17.
20. van der Ploeg AT. The Dilemma of Two Innovative Therapies for Spinal Muscular Atrophy. *N Engl J Med*. 2017;377(18):1786–7.
21. Climent E, Benaiges D, Pedro-Botet J, Goday A, Sola I, Ramon JM, et al. Laparoscopic Roux-en-Y gastric bypass vs. laparoscopic sleeve gastrectomy for morbid obesity: a systematic review and meta-analysis of lipid effects at one year postsurgery. *Minerva Endocrinol*. 2018;43(1):87–100.
22. Mesfin A, Sponseller PD, Leet AI. Spinal muscular atrophy: manifestations and management. *J Am Acad Orthop Surg*. 2012;20(6):393–401.
23. Qian Y, McGraw S, Henne J, Jarecki J, Hobby K, Yeh W-S. Understanding the experiences and needs of individuals with Spinal Muscular Atrophy and their parents: a qualitative study. *BMC Neurology*. 2015;15(1):217.
24. Wang CH, Finkel RS, Bertini ES, Schroth M, Simonds A, Wong B, et al. Consensus Statement for Standard of Care in Spinal Muscular Atrophy. *J Child Neurol*. 2007;22(8):1027–49.
25. Reed Johnson F, Lancsar E, Marshall D, Kilambi V, Muhlbacher A, Regier DA, et al. Constructing experimental designs for discrete-choice experiments: report of the ISPOR Conjoint Analysis Experimental Design Good Research Practices Task Force. *Value Health*. 2013;16(1):3–13.
26. Bridges JF, Hauber AB, Marshall D, Lloyd A, Prosser LA, Regier DA, et al. Conjoint analysis applications in health—a checklist: a report of the ISPOR Good Research Practices for Conjoint Analysis Task Force. *Value Health*. 2011;14(4):403–13.
27. Hauber AB, Arden NK, Mohamed AF, Johnson FR, Peloso PM, Watson DJ, et al. A discrete-choice experiment of United Kingdom patients' willingness to risk adverse events for improved function and pain control in osteoarthritis. *Osteoarthritis Cartilage*. 2013;21(2):289–97.
28. Harris PA, Taylor R, Thielke R, Payne J, Gonzalez N, Conde JG. Research electronic data capture (REDCap)—a metadata-driven methodology and workflow process for providing translational research informatics support. *J Biomed Inform*. 2009;42(2):377–81.
29. Louviere J, Hensher DA, Swait JD. Stated choice methods: analysis and application. Cambridge: Cambridge University Press; 2000.
30. de Bekker-Grob EW, Donkers B, Jonker MF, Stolk EA. Sample Size Requirements for Discrete-Choice Experiments in Healthcare: a Practical Guide. *Patient*. 2015;8(5):373–84.

31. Chaugule SS, Hay JW, Young G. Understanding patient preferences and willingness to pay for hemophilia therapies. *Patient Prefer Adherence*. 2015;9:1623–30.
32. Kuhfeld WF, Tobias RD. Large Factorial Designs for Product Engineering and Marketing Research Applications. *Technometrics*. 2005;47(2):132–41.
33. Huber J, Zwerina K. The Importance of Utility Balance in Efficient Choice Designs. *J Mark Res*. 1996;33(3):307–17.
34. Rouault F, Christie-Brown V, Broekgaarden R, Gusset N, Henderson D, Marczuk P, et al. Disease impact on general well-being and therapeutic expectations of European Type II and Type III spinal muscular atrophy patients. *Neuromuscular disorders: NMD*. 2017;27(5):428–38.
35. Cruz R, Belter L, Wasnock M, Nazarelli A, Jarecki J. Evaluating Benefit-risk Decision-making in Spinal Muscular Atrophy: A First-ever Study to Assess Risk Tolerance in the SMA Patient Community. *Clin Ther*. 2019;41(5):943–60. e4.
36. Pacione M, Siskind CE, Day JW, Tabor HK. Perspectives on Spinraza (Nusinersen) Treatment Study: Views of Individuals and Parents of Children Diagnosed with Spinal Muscular Atrophy. *Journal of neuromuscular diseases*. 2019;6(1):119–31.

Appendix

Appendix Table 1: Attribute Preferences for SMA Treatment					
	Coefficient	SE	95% CI		P-value
Level of change in motor function (ref: Stable)					
Better	0.65	0.09	0.47	0.83	0.000
Change in breathing function (ref: Stable)					
Better	0.79	0.10	0.60	0.98	0.000
Drug is approved for: (ref: Pediatric and adult patients with SMA)					
Pediatric patients with SMA under 2 years of age	-1.28	0.10	-1.47	-1.09	0.000
Route and frequency of treatments (ref: Intrathecal spinal injection – 3–6 times per year)					
Intravenous injection - one-time treatment	0.51	0.11	0.30	0.73	0.000
Oral - daily medication	0.80	0.13	0.55	1.04	0.000
Treatments potential risk (ref: Mild risk)					
Moderate risk	-0.76	0.13	-1.01	-0.50	0.000
Serious, or life-threatening risk	-1.86	0.13	-2.11	-1.60	0.000
SE: Standard Error; CI: Confidence Interval.					

Appendix Table 2: Preferences for SMA Treatment by Sub-groups										
SMA Types			Age groups				Currently under gene therapy		Currently under Spinraza® (nusinersen) treatment	
Type I (n = 21)	Type II (n = 48)	Type III (n = 29)	≤ 2 years (n = 16)	3–17 years (n = 10)	≥ 18 years (n = 75)	Yes (n = 10)	No (n = 91)	Yes (n = 59)	No (n = 42)	
Level of change in motor function (ref: Stable)										
Better	0.80*	0.41*	0.92*	0.68*	0.95*	0.61*	0.46	0.67*	0.79*	0.45*
Change in breathing function (ref: Stable)										
Better	1.16*	0.75*	0.58*	1.71*	-0.12	0.80*	1.47*	0.75*	0.77*	0.78*
Drug is approved for: (ref: Pediatric and adult patients with SMA)										
Pediatric patients with SMA under 2 years of age	-0.76*	-1.51*	-1.35*	-0.10	-0.28	-1.68*	0.30	-1.44*	-1.33*	-1.16*
Route and frequency of treatments (ref: Intrathecal spinal injection – 3–6 times per year)										
Intravenous injection – one-time treatment	0.82*	0.42*	0.44*	1.69*	0.19	0.38*	2.03*	0.39*	0.39*	-0.65*
Oral – daily medication	0.98*	0.82*	0.76*	1.01*	0.33	0.92*	0.65	0.87*	0.87*	0.05
Treatments potential risk (ref: Mild risk)										
Moderate risk	-0.73*	-0.81*	-0.70*	-0.79*	-0.68	-0.84*	-0.34	-0.84*	-0.73*	-0.81*
Serious, or life-threatening risk	-1.91*	-2.11*	-1.43*	-3.03*	-1.55*	-1.85*	-2.83*	-1.85*	-1.61*	-2.22*
* p < 0.05 ** p < 0.01 *** p < 0.001										

Figures

Figure 1: Snapshot of SMA survey instrument detailing treatment and attribute choices

Patient ID: test Progress 1 2 3 4 5 6 7 8 9 10 11 12

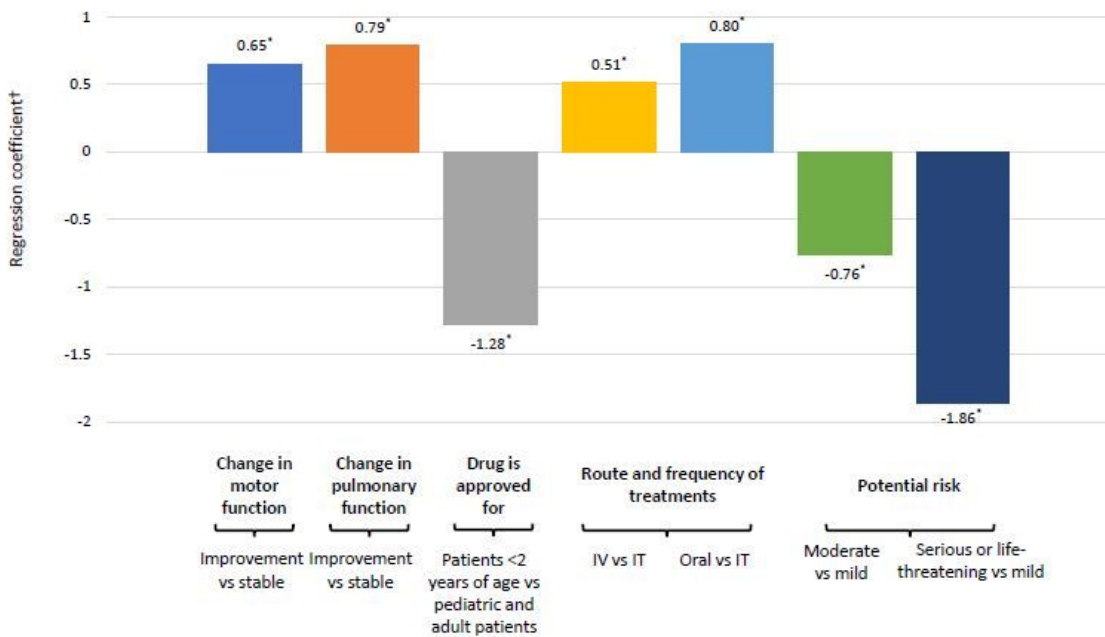
Attributes	TREATMENT A	TREATMENT B
Level of change in motor function	Better	Better
Change in breathing function	Better	Stable
Drug is approved for	Pediatric and adult patients with SMA	Pediatric and adult patients with SMA
Route and frequency of treatments	Oral - daily medication	Intravenous injection - one-time treatment
Treatments potentially raise severity of harm to patients	Mild risk which may involve minimal or non-invasive medical intervention	Moderate risk which may require medical intervention (possibly invasive), but not life threatening
Which product would you choose, A or B?	<input type="radio"/> A	<input type="radio"/> B

Next

Figure 1

Figure 1

Figure 2. Preference for treatment attributes of individuals with SMA and their caregivers



*Results are statistically significant. †Regression coefficient >0 shows preference for a treatment attribute; regression coefficient <0 shows aversion to a treatment attribute.

Figure 2

Figure 2

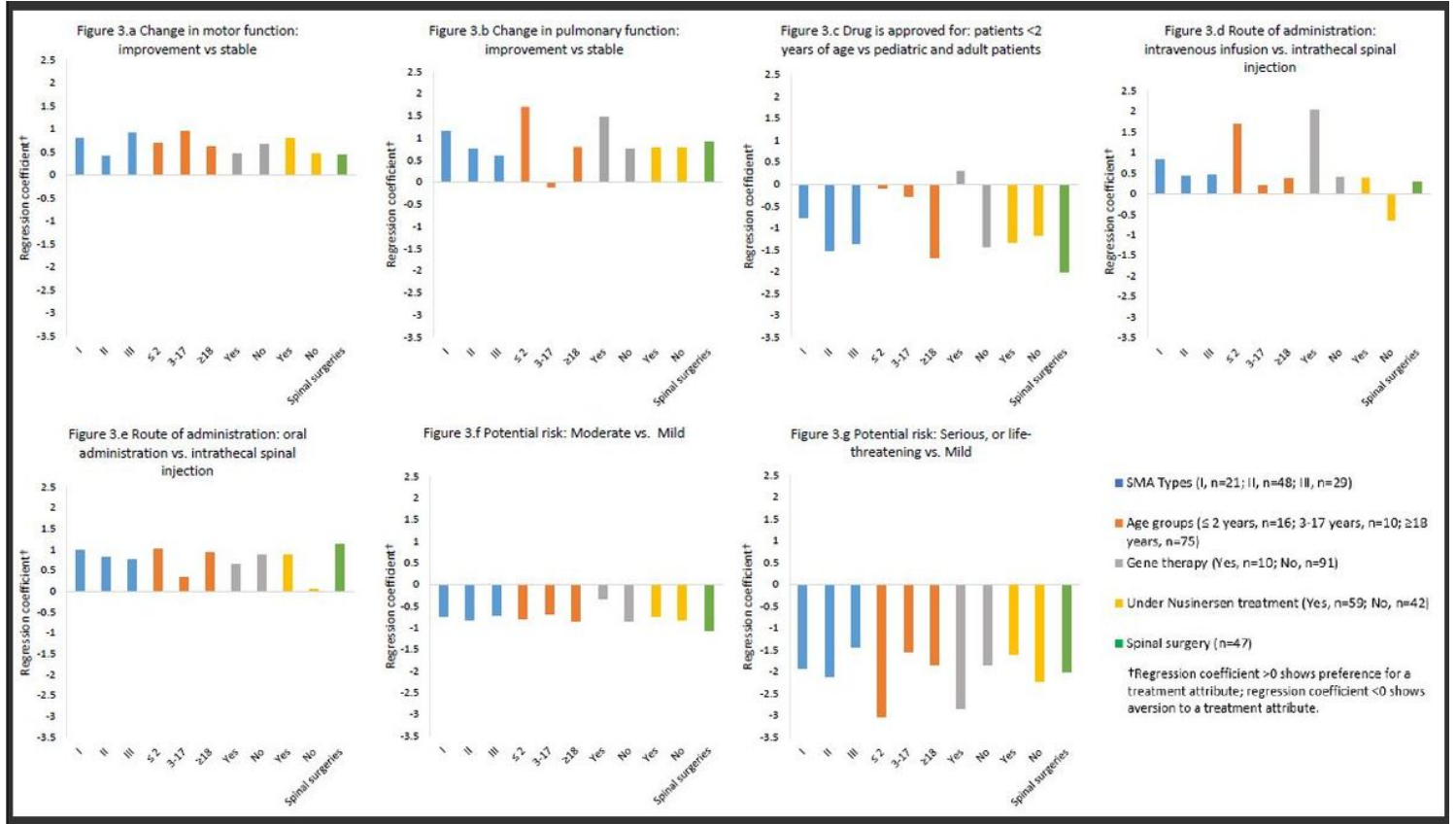


Figure 3

Figure 3