

# Extracellular GAPDH promotes Alzheimer disease progression by enhancing amyloid- $\beta$ aggregation and cytotoxicity

**Vladimir F. Lazarev**

Institute of Cytology of Russian Academy of Sciences, Engelhardt Institute of Molecular Biology, Russian Academy of Sciences, Howard Hughes Medical Institute, New York University School of Medicine

**Magda Tsolaki**

Aristotle University Of Thessaloniki Department of Neurology

**Elena R. Mikhaylova**

Institute of Cytology of Russian Academy of Sciences

**Konstantin A. Benken**

St.Petersburg State University

**Maxim A. Shevtsov**

Klinikum rechts der Isar der Technischen Universitat Munchen Klinik und Poliklinik fur Frauenheilkunde

**Alina D. Nikotina**

Institute of Cytology of Russian Academy of Sciences

**Mirna Lechpammer**

New York University School of Medicine

**Vladimir A. Mitkevich**

Engelhardt Institute of Molecular Biology, Russian Academy of Sciences

**Alexander A. Makarov**

Engelhardt Institute of Molecular Biology, Russian Academy of Sciences

**Sergey A. Kozin**

Engelhardt Institute of Molecular Biology, Russian Academy of Sciences

**Boris A. Margulis** (✉ [margulis@incras.r](mailto:margulis@incras.r))

Institute of Cytology of Russian Academy of Sciences

**Irina V Guzhova** (✉ [irina.guzh@gmail.com](mailto:irina.guzh@gmail.com))

Institute of Cytology of Russian Academy of Sciences <https://orcid.org/0000-0002-8775-7713>


**Evgeny Nudler** (✉ [evgeny.nudler@nyulangone.org](mailto:evgeny.nudler@nyulangone.org))

Department of Biochemistry and Molecular Pharmacology, New York University School of Medicine, Howard Hughes Medical Institute, New York University School of Medicine

**Keywords:** Alzheimer's disease (AD), Glyceraldehyde-3-phosphate dehydrogenase (GAPDH), amyloid- $\beta$  (A $\beta$ )

**Posted Date:** August 18th, 2020

**DOI:** <https://doi.org/10.21203/rs.3.rs-53359/v1>

**License:**  This work is licensed under a Creative Commons Attribution 4.0 International License.  
[Read Full License](#)

---

**Version of Record:** A version of this preprint was published at Aging and disease on January 1st, 2021.  
See the published version at <https://doi.org/10.14336/AD.2020.1230>.

# Abstract

**Background** Neuronal cell death during Alzheimer disease (AD) causes the release of cytosolic proteins, particularly glyceraldehyde-3-phosphate dehydrogenase (GAPDH), which forms highly cytotoxic detergent-insoluble complexes with amyloid- $\beta$  (A $\beta$ ) and promotes neurodegeneration. **Methods** We detected and quantified the complex formation between A $\beta$  and GAPDH released from brain tissue of patients with AD using ultrafiltration, and fluorescence resonance energy transfer (FRET). To explore the biochemical and structural features of A $\beta$ -GAPDH complexes we employed novel immunoenzyme assays and atomic force microscopy. Lentiviral infection in situ was used to elevate GAPDH in brain tissue of rat and mouse models of AD. The Morris maize water test, MRI, terminal deoxynucleotidyl transferase dUTP nick end labeling (TUNEL), and lactate dehydrogenase (LDH)-activity assays were used to characterize the effects of A $\beta$ -GAPDH complexes in animal and cellular models of AD. **Results** Here we report that GAPDH forms stable aggregates with extracellular A $\beta$ . We detected these aggregates in cerebrospinal fluid (CSF) from AD patients at levels directly proportional to the progressive stages of AD. We found that GAPDH forms a covalent bond with Q15 of A $\beta$  that is mediated by transglutaminase (tTG). The Q15A substitution weakens the interaction between A $\beta$  and GAPDH and reduces A $\beta$ -GAPDH cytotoxicity. Lentivirus-driven GAPDH overexpression in two AD animal models increased the level of apoptosis of hippocampal neurons, neuronal degeneration, and cognitive dysfunction. In contrast, in vivo knockdown of GAPDH reversed these pathogenic abnormalities suggesting a pivotal role of GAPDH in A $\beta$ -stimulated neurodegeneration. CSF obtained from animals with enhanced GAPDH expression demonstrated increased cytotoxicity in vitro. Furthermore, RX-624, a specific GAPDH small molecular ligand reduced accumulation of A $\beta$  aggregates and reversed memory deficit in AD transgenic mice. **Conclusions** Extracellular GAPDH compromises A $\beta$  clearance and accelerates neurodegeneration, thus representing a promising pharmacological target for AD.

## Background

For decades, Alzheimer disease (AD) has been defined as a dementia syndrome confirmed by postmortem neuropathological observation of neuritic plaques and neurofibrillary tangles, which are known to be composed, respectively, of amyloid- $\beta$  (A $\beta$ ) and paired helical filament tau [1]. Recent large genome-wide association meta-analysis of 94,437 individuals with clinically diagnosed AD, has shown that genetic variants with affected processing of A $\beta$  and amyloid precursor protein are associated with both early-onset autosomal dominant AD and with late-onset AD [2]. The amyloid hypothesis of AD suggests that the imbalance between production and clearance of A $\beta$  in the human brain is critical in AD pathogenesis [3]. Accordingly, AD pathogenesis is triggered by the formation of soluble oligomers from physiologically monomeric A $\beta$  molecules, followed by the generation of insoluble polymeric A $\beta$  aggregates, eventually accumulating as amyloid plaques [4]. A $\beta$  oligomers are known to injure synapses, which leads to microglial and astrocytic activation, causing an inflammatory response and disruption of neuronal ionic homeostasis; the latter leading to oxidative injury and altered kinase/phosphatase activities that cause the formation of tangles [5,6]. The outcome of this pathologic chain of events is

synaptic dysfunction and massive neuronal loss. Given the clinical hallmarks of AD – formation of polymeric A $\beta$  aggregates and accumulation of amyloid plaques – novel, investigative therapeutic approaches are currently focusing on the design of peptides capable of binding to A $\beta$  to block either fibril formation or A $\beta$  elongation in order to prevent the formation of monomers/oligomers [7].

Neuronal death during AD causes the release of cytosolic proteins, some of which may interact with endogenous A $\beta$ . It has been hypothesized that the glycolytic enzyme glyceraldehyde-3-phosphate dehydrogenase (GAPDH), one of the most abundant cellular proteins, may have a role in AD pathogenesis [8,9], possibly due to the formation of neurotoxic aggregates with A $\beta$  [10-11]. Tissue transglutaminase (tTG) has been also linked to AD pathology [12]. This enzyme catalyzes the formation of intermolecular covalent bonds between surface lysines of GAPDH and glutamine residues of partner proteins, such as mutant huntingtin [13,14]. GAPDH was also found to increase cytotoxicity and prion-like properties of pathogenic poly-Q proteins [15,16].

Considering the Q15 residue of Ab to be a potential substrate of tTG [17], we examined whether the aggregation of Ab with GAPDH in the presence of tTG resulted in the covalent A $\beta$ -GAPDH complex formation. We have demonstrated that in cerebrospinal fluid (CSF) of AD patients, A $\beta$  and GAPDH indeed form highly stable complexes. The more advanced the stage of the disease, the greater the amount of such complexes. We then demonstrated the covalent nature of A $\beta$ -GAPDH complexes and their cytotoxicity *in vitro*. Furthermore, we found that the increased level of constitutive GAPDH in AD animal models results in aggravation of cognitive deficits and brain pathology linked to AD progression, which can be rescued by a specific GAPDH-targeting small ligand. These findings establish GAPDH as a promising AD therapeutic target.

## Methods

### Patients and CSF collection

CSF samples were collected via spinal tap from 190 patients (107 male, 83 female; average age  $75.3 \pm 0.5$ ) between 2007 and 2017 at the Care Units for Alzheimer's Disease Problems 'Saint Eleni' and 'Saint Ioannis' in Thessaloniki, Greece. The diagnosis was established according to the NINCDS-ARDRA criteria for AD [18], and the Petersen criteria for MCI [19]. Patients were assigned to severity subgroups based on their scores on the Mini-Mental State Examination (MMSE) [20]. CSF samples were collected via spinal tap in 10 mL polypropylene tubes and stored at  $-80\text{ }^{\circ}\text{C}$  within 1 h after sampling. CSF samples from the first patient cohort, used for GAPDH detection, were centrifuged at  $2000\text{ }g$  for 10 min at  $4\text{ }^{\circ}\text{C}$  before freezing (Fig. 1b,c). CSF samples from the second patient cohort, used for detecting A $\beta$ -GAPDH aggregates, were frozen without centrifugation (Fig. 1d,e). Samples were delivered to the Institute of Cytology of Russian Academy of Sciences, St. Petersburg, Russia, in June 2016 and October 2017, respectively, on dry ice for further analyses. All CSF samples had only one freeze-thaw cycle.

The first cohort comprised of four patient groups: (1) mild cognitive impairment (MCI)  $n = 22$ ; (2) mild AD-type dementia ('Mild'),  $n = 41$ ; (3) moderate AD-type dementia ('Moderate')  $n = 49$ ; and (4) severe AD-type

dementia ('Severe'),  $n = 51$ . The second cohort represented the same patient groups: (1)  $n = 6$ ; (2)  $n = 8$ ; (3)  $n = 7$ ; (4)  $n = 6$ .

For all patients participating in the study a written informed consent was obtained either directly from the capable individuals or from legally authorized representatives, according to the Declaration of Helsinki (World Medical Association, 2013) [21], and the Research Ethics Committee approvals at each center participating in the study.

### **CSF analysis for GAPDH**

To measure the amount of GAPDH in conditioned medium and in CSF samples, a previously-developed double-site sandwich-like ELISA immunoassay was used [16]. Calibration standards of pure GAPDH and CSF samples diluted 1:9 in PBS were applied to the wells for 3 h, after which they were washed. Monoclonal 6C5 anti-GAPDH was then added, followed by secondary anti-mouse horseradish peroxidase-conjugated antibody (Jackson Immuno-Research, USA).

### **CSF analysis for A $\beta$ -GAPDH aggregates**

Previously frozen, non-centrifuged CSF samples were analyzed using the filter-trap assay [22]. For each sample, 250  $\mu$ L of CSF was mixed with 250  $\mu$ L of buffer containing 20 mM Tris HCl, pH 7.5, 20 mM NaCl, and 4% sodium dodecyl sulfate (SDS). The mixtures were sonicated and ultra-filtered with the use of a dot-blotting manifold (BioRad, USA). The membranes were incubated with antibodies against either A $\beta$  (Abcam, UK) or GAPDH (Abcam, UK), and subsequently with secondary antibodies conjugated with peroxidase; visualization of the dots was performed using a chemiluminescence protocol. Dot intensity was measured with TotalLab Quant software.

The FRET technique was used to analyze the amount of A $\beta$ -GAPDH complexes in CSF samples. Briefly, 100  $\mu$ L of CSF samples were diluted in 100  $\mu$ L of PBS, then antibodies were added. Rabbit anti-A $\beta$  antibody (Sigma-Aldrich, USA) was labeled with Alexa488 fluorescent dye (Thermo Fisher Scientific, USA); mouse anti-GAPDH antibody (Clone 6C5, Abcam, UK) was conjugated with CF555 fluorescent dye (Sigma-Aldrich, USA). All antibodies were diluted in the ratio 1:200. The mixtures containing CSF sample, PBS and indicated antibodies were incubated for 1 h, then the fluorescence emission spectrum of each sample was determined using a Varioscan LUX device (Thermo Fisher Scientific, USA). The fluorescence emission spectrum was detected from 515 nm to 600 nm at the excitation wavelength of 490 nm. Then fluorescence emission at 568 nm at the excitation wavelength of 490 nm was separately measured. For all data, the final fluorescent signals were obtained by subtracting the fluorescent signals with the background noise from a blank well (200  $\mu$ L of PBS containing all antibody set without CSF samples). The experiments were repeated for four times and the average value of fluorescence were taken at each specific condition.

To analyze the toxicity of CSF samples, 50  $\mu$ L of CSF was mixed with 50  $\mu$ L of cell culture medium, added to SH-SY5Y cells in a 96-well plate and incubated for 48 h. Cell viability was measured using the 3-

(4,5-dimethylthiazol-2-yl)-2,5-dimethyltetrazolium bromide (MTT) assay as previously described [23].

### **Cells, plasmids, peptides, and proteins**

Human neuroblastoma SY-SH5Y cells (ATCC, USA) were grown in Dulbecco's modified Eagle's medium, supplemented with the nutrient mixture F-12, L-glutamine (Gibco, USA), 10% fetal calf serum (PAA Laboratories GE, Austria), and 50 mg/mL of gentamicin (Biolot, Russia) under 5% CO<sub>2</sub> at 37 °C. Cell death was estimated using the CytoTox-96 assay (Promega, USA) based on measurements of lactate dehydrogenase (LDH) activity in the culture medium.

To vary the GAPDH level in brain cells, plasmids bearing the entire *gapdh* gene, pLOC-GAPDH (GAPDH knock-in), and clone TRCN0000041460, shRNA to GAPDH (GAPDH knock-down), mature antisense: CTGAGTATGTCGTGGAGTCTA were purchased from Termofisher Scientific (USA). Packaging (D8.91) and envelope (pVSV-G) plasmids were purchased from Invitrogen, (USA). The HEK-293T host cells were transfected using polyethyleneimine (Sigma, USA) mixed with all three plasmids.

Aβ<sub>42</sub>, Aβ<sub>16</sub>, Aβ<sub>42</sub><sup>Q15A</sup>, Aβ<sub>16</sub><sup>Q15A</sup>, and biotinylated Aβ<sub>42</sub> were purchased from GeneCust (Switzerland). GAPDH isolated from rabbit muscle was kindly provided by Dr. Muronetz (Moscow State University, Moscow, Russia).

### **Protein-protein interaction assays**

All tests for the interaction (i.e. co-aggregation) of GAPDH and Aβ peptides were performed under the following conditions: 30 µg/mL Aβ peptide, 30 µg/mL GAPDH, and 1 µg/mL tTG, dissolved in buffer containing 20 mM Tris HCl, pH 7.5, 20 mM NaCl, and 10 mM CaCl<sub>2</sub>. Incubations were at 37°C for 18 h for electrophoresis or 48 h for the filter-trap assay and AFM.

To analyze the interaction between GAPDH and biotinylated Aβ<sub>42</sub>, we developed a new ELISA-based test. Purified GAPDH was diluted to a concentration of 4 mg/mL in PBS and immobilized for 1 h on an F96 MicroWell™ plate (Nunc, Denmark). The plate was washed with PBS and blocked for 1 h with PBS containing 3% fetal calf serum. Immobilized GAPDH was then incubated for 1.5 h with 30 µg/mL Aβ<sub>42</sub> dissolved in a buffer containing 20 mM Tris HCl, pH 7.5, 20 mM NaCl, and 10 mM CaCl<sub>2</sub>. Factors affecting the interaction between GAPDH and Aβ<sub>42</sub>, such as transglutaminase (tTG) or cystamine, were added at this stage. For detection, avidin-peroxidase conjugate (Sigma-Aldrich, USA) was used. Visualization was performed using the tetramethylbenzidine protocol. The estimation of the interaction between GAPDH and non-biotinylated Aβ peptides was carried out using competitive inhibition of biotinylated Aβ<sub>42</sub> binding to immobilized GAPDH. All experiments were performed in triplicate.

### **Atomic force microscopy**

Sample protein mixtures prepared as described above were placed on glass supports, dried, and analyzed with the aid of a Ntegra Aura microscope (NT-MDT, Russia). The atomic-force studies were conducted at

the Resource Centre for Microscopy and Microanalysis, St. Petersburg State University.

## Animals

Two animal models of AD were used in this study: (1) “chemical” model in Wistar rats and (2) transgenic 5XFAD mice.

### Chemically-induced model of Alzheimer's disease in rats

The chemically-induced model of AD in rats [24] is widely used in AD studies. Briefly, Wistar male rats at P90-P100 weighing 200–220 g were divided into 7 groups ( $n = 9$  in each group) as follows: untreated, sham-operated, injected with A $\beta$ 42, injected with shGAPDH RNA lentiviral construct, injected with pLOC-GAPDH lentiviral construct, injected with A $\beta$ 42 + shGAPDH RNA lentiviral construct, and injected with A $\beta$ 42 + pLOC-GAPDH lentiviral construct. A $\beta$ 42 and the viral constructs were dissolved in 5 mL of sterile, phosphate-buffered saline (PBS). Injections were carried out using a stereotaxic device (SR-5R, Narishige Scientific Instrument Laboratory, Japan) at the following coordinates: anteroposterior (AP) = -4 mm, lateral (L) = 2.5 mm, and dorsoventral (DV) = 3 mm [25,26]. Before the surgery rats were anesthetized with 10 mg “Zoletyl-100” (tiletamine hydrochloride and zolazepam, Carros Cedex, France) and 0.2 ml 2% Rometar (xylazine hydrochloride, Bioveta, Czech Republic) injected intraperitoneally before being mounted in a stereotactic frame. We anesthetized the mice with 1 mg “Zoletyl-100” and 0.02 ml 2% Rometar in 0.1 ml normal saline. All *in vivo* experiments were carried out following the requirements of the Institute of Cytology of Russian Academy of Sciences ethic committee (Identification number F18-00380).

### Transgenic model of AD

The 5XFAD transgenic mice were genotyped by PCR analysis of DNA extracted from ear biopsies. The transgenic cassette was detected using primers 5'-AGGACTGACCACTCGACCAG-3' and 5'-CGGGGGTCTAGTTCTGCAT-3', yielding a 377 bp product. Siblings of 5XFAD mice were used as wild-type (wt); this protocol was described by Peters et al [27].

Wt and 5XFAD male mice at P60 were divided into 8 groups of 6 animals as follows: 1) untreated wt, 2) sham-operated wt, 3) wt injected with the shGAPDH RNA lentiviral construct, 4) wt injected with the pLOC-GAPDH lentiviral construct, 5) untreated 5XFAD, 6) sham-operated 5XFAD, 7) 5XFAD injected with the shGAPDH RNA lentiviral construct, and 8) 5XFAD injected with the pLOC-GAPDH lentiviral construct. Viral constructs were dissolved in 5  $\mu$ L of sterile PBS and injected using a stereotaxic device with a special adapter (SR-5R, Narishige Scientific Instrument Laboratory, Japan) at the following coordinates: AP = -2.5 mm, L = 1.5 mm, and DV = 1.7 mm. Coordinates were determined accordingly to The Mouse Brain Library service (mbl.org) [28].

### Morris water maze test

Memory impairment in rats (n=9) and mice (n=6) from each experimental group was evaluated using a Morris water-maze test [29] of diameter 1.5 m (OpenScience, Russia) on day 60 after A $\beta$ 42 injection into rats and on P180 for 5XFAD mice. The time required for experimental animals to find the submerged platform was measured. The swimming trajectories of animals in experiments with the hydrocortisone treatments were treated according to EthoVision XT14.0. [30].

### **Magnetic resonance imaging (MRI)**

The brains of 3 randomly selected rats from each experimental group were analyzed by MRI. The assessment of the parenchymal brain damage induced by the stereotactic injections of A $\beta$  peptides and lentiviruses employed a high-field (9.4 T) magnetic-resonance scanner (Avance III 400 WB; Bruker, Germany) with the following protocols: FLASH, Rare T1, and TurboRare T2. All images were obtained with a slice thickness of 1.0 mm in the coronal plane. Assessment of the MR scans was assisted by the Paravision 5.1 software package (Bruker BioSpin GmbH, Rheinstetten, Germany) and Analyze software (AnalyzeDirect, Inc., Overland Park, KS, USA) [22].

### **Analysis of apoptosis**

Brains of 3 randomly selected rats and / or mice from each experimental group, as described above were used for immunohistological analysis. Histological preparations of frontal sections at the hippocampus level (12  $\mu$ m) were stained with the Click-IT TUNEL kit (Life Technologies, USA).

### **Statistical analysis**

All numeral results are reported as the mean  $\pm$  standard error of the mean (SEM) and represent data from a minimum of three independent experiments. Statistical analysis was performed using the Nonparametric Mann-Whitney U-test for groups that did not pass the Normality test (Shapiro-Wilk method). These data were processed using Statistica Version 13.3 for Windows. For data that had a Gaussian distribution, the one-way ANOVA test followed by Tukey's comparison test (when compare the mean of each condition with every other comparison) was used with the aid of Graph Pad Prism 8.0 (Graph Pad Software Inc). Differences were considered statistically significant at  $p < 0.05$ .

## **Results**

### **GAPDH in CSF contributes to A $\beta$ toxicity**

To test whether GAPDH is released from cells affected by exogenous A $\beta$ , we utilized a human neuroblastoma cell line, SH-SY5Y [31]. The cells were incubated with A $\beta$ 42 peptide for indicated times, and the profiles of cell death, as determined by lactate dehydrogenase activity in culture medium, and the extracellular GAPDH concentration, as measured using a sandwich-type ELISA, were compared (Fig. 1a). The matching profiles indicate that the release of GAPDH in the intercellular space is coupled to the toxic effect of exogenous A $\beta$ 42.



To determine whether GAPDH progressively accumulates in CSF of AD patients, we studied samples from first cohort of patients with Mild Cognitive Impairment (MCI) ( $n = 22$ ), as well as with mild ( $n = 41$ ), moderate ( $n = 49$ ), and severe ( $n = 51$ ) AD, stratified based on Mini-Mental State Examination (MMSE) scores [20] (Table S1). The level of GAPDH measured with the sandwich-type ELISA immunoassay was low in samples from MCI and 'mild AD' patients, and progressively increased with the AD stage, reaching  $12.5 \pm 1.5$  ng/mL in the 'severe AD' group (Fig. 1b).

To determine whether the extracellular GAPDH impacted cell death, 50  $\mu$ L of each CSF sample was mixed with 50  $\mu$ L of growth medium and added to SH-SY5Y cell cultures (Fig. 1c). Cell death increased progressively as a function of AD stage, reaching  $19.2 \pm 0.9\%$  for samples from the 'severe AD' group, suggesting that GAPDH contributes to CSF toxicity (Fig. 1c).

We next investigated the aggregation status of GAPDH and A $\beta$ 42 in CSF. Samples from the second cohort from MCI ( $n = 6$ ), mild AD ( $n = 8$ ), moderate AD ( $n = 7$ ), and severe AD ( $n = 6$ ) groups, were examined (Table S2). To prevent the loss of aggregates we avoided centrifugation. Instead, the sodium dodecyl sulfate (SDS)-insoluble aggregating material was collected by ultrafiltration using a 96-well dot-blotting manifold; the membrane was stained with an antibody against A $\beta$  (Fig. 1d), and another identical 96-array dot-blot was stained with an anti-GAPDH antibody (Fig. 1e). The amount of A $\beta$ 42-GAPDH co-aggregates trapped on the filter strongly correlated with the disease stage. The difference in dot density between MCI samples and samples from patients with severe AD was 4-fold for A $\beta$ 42 (Fig. 1d) and 7-fold for GAPDH (Fig. 1e).

To determine whether extracellular GAPDH forms a complex with A $\beta$  in CSF of AD patients we used Förster resonant energy transfer (FRET). To detect photon transfer from a fluorophore-donor, Alexa 488 conjugated with A $\beta$  antibody, to a fluorophore-acceptor, CF-555 conjugated with GAPDH antibody, we obtained an emission spectrum in the range of 516-600 nm at an excitation wavelength 490 nm. We found a progressive increase in FRET signal at 568 nm, which directly correlated with the disease stage (Fig. 1f). Although the change in the FRET signal was noticeable in CSF from 'Mild AD' patients ( $6.1 \pm 0.2$  vs  $4.8 \pm 0.7$  arb.un), it was not statistically significant. However, FRET changes for samples from 'Moderate' and 'Severe' AD patients were significantly higher than in the control (Fig. 1f). We conclude that the extracellular GAPDH forms a complex with A $\beta$  in CSF of AD patients and the more advanced the stage of the disease the higher is the concentration and toxicity of these complexes.

### **Covalent bonding between A $\beta$ 42 and GAPDH promotes toxic co-aggregation**

Our findings that A $\beta$ 42 and GAPDH persist as SDS-insoluble aggregates in the CSF of patients with AD and previous reports linking tTG to AD and Huntington disease pathology [12,32] prompted us to examine the possibility of tTG-mediated covalent interaction between the two polypeptides.

tTG-mediated bond formation may occur between surface exposed lysines of GAPDH and glutamine 15 of A $\beta$ 42 [33]. To test this possibility, we designed a protein-protein interaction assay in which GAPDH was immobilized at the bottom of a 96-well plate, and then biotinylated A $\beta$ 42 or A $\beta$ 42 with a Q15A

substitution (A $\beta$ 42<sup>Q15A</sup>) were added in the presence of tTG alone, or together with cystamine, a tTG inhibitor, followed by washing. tTG enhanced the binding of GAPDH to A $\beta$ 42, but not to A $\beta$ 42<sup>Q15A</sup>, by approximately 50%, whereas cystamine abolished this effect (Fig. 2a).

To further investigate the stable association between GAPDH and A $\beta$ 42, the mixtures containing GAPDH, A $\beta$ 42, tTG, and cystamine were prepared in combinations as shown in Fig. S1, incubated for 12 hours, followed by SDS gel separation and Western blotting (Fig. S1). The only visible band stained with anti-A $\beta$  antibody has the same mobility as GAPDH (36 kDa) (upper panel). This band, which appeared after gel separation of the mixture containing GAPDH, A $\beta$ 42, and tTG, constitutes the SDS-insoluble complex of A $\beta$ -GAPDH.

The N-terminal fragment (residues 1-16) appears to be the minimal part of A $\beta$  capable of triggering amyloidosis *in vivo* [34]. We therefore examined the ability of A $\beta$ 16 and A $\beta$ 16<sup>Q15A</sup>, as well as A $\beta$ 42 and A $\beta$ 42<sup>Q15A</sup>, to bind GAPDH in the presence or absence of tTG using a filter-trap assay (Fig. 2b). Both A $\beta$ 16 and A $\beta$ 42 formed co-aggregates with GAPDH (Fig. 2 b,c). The level of aggregation was much higher in the presence of tTG. Q15A substitution greatly reduced the ability of A $\beta$ 42 and A $\beta$ 16 to form such aggregates (Fig. 2 b,c).

To further establish the role of Q15 in the A $\beta$ -GAPDH complex, a competition protein-protein interaction assay was designed in which GAPDH was immobilized at the bottom of a 96-well plate, and biotinylated A $\beta$ 42 was added to the wells together with non-tagged A $\beta$  peptides at various concentrations in the presence of tTG (Fig. 2d). A $\beta$ 42 and A $\beta$ 16 peptides, but not their Q15A derivatives, reduced the binding of biotinylated A $\beta$ 42 to GAPDH in a dose-dependent manner (Fig. 2d), thus directly supporting the role of Q15 in tTG-mediated A $\beta$ -GAPDH complex formation.

We next employed atomic force microscopy (AFM) to examine the structure of GAPDH-A $\beta$  complexes (Fig. 2e). A $\beta$ 42 forms only tiny fibril-like structures, whereas A $\beta$ 16 does not form any visible fibrils. However, in the presence of GAPDH, and especially in combination with tTG, the fibril-like structures become obvious; their size increases for both A $\beta$ 42 and A $\beta$ 16. Notably, the aggregates found in the GAPDH mixtures with A $\beta$ 16<sup>Q15A</sup> or A $\beta$ 42<sup>Q15A</sup> were amorphous, closely resembling those produced by GAPDH alone (Fig. 2e).

As shown in Fig.1c, CSF samples from AD patients are toxic to SH-SY5Y cells. To test whether A $\beta$  peptides with a Q15A substitution retain their toxicity, cultures of SH-SY5Y cells were incubated with A $\beta$ 42/16 peptides, or their Q15A derivatives, along with GAPDH or GAPDH+tTG. GAPDH alone or with tTG was minimally toxic (Fig. 2f,g). The tTG enzyme itself was not toxic. The number of dead cells significantly increased in the presence of A $\beta$ 42/16 and GAPDH ( $19.5 \pm 2.4\%$  and  $31.6 \pm 0.3\%$ , respectively) and further increased in the presence of tTG ( $31.5 \pm 4.6\%$  and  $36.1 \pm 0.4\%$  for A $\beta$ 16 and A $\beta$ 42, respectively). Q15A derivatives demonstrated much less toxicity under the same conditions (Fig. 2g).

Finally, we examined whether a protein other than GAPDH, which can also be released from dying neurons, formed insoluble complexes with A $\beta$ 42. Lactate dehydrogenase (LDH) is an abundant enzyme that is solely cytoplasmic and serves as a common indicator of cell death if found intracellularly [35]. We used ultrafiltration to compare the abundance of aggregates formed by A $\beta$ 42 in the presence of GAPDH+tTG or LDH+tTG (Fig. S2). The amount of A $\beta$ 42 aggregates formed in the presence of LDH+tTG did not differ statistically from those formed by A $\beta$ 42 alone (adjusted P value 0.2365). In contrast, A $\beta$ 42 aggregates formed with GAPDH were at least four-fold more abundant than those obtained with LDH (Fig. S2).

### **Extracellular GAPDH in murine hippocampus exacerbates AD pathology**

As shown above, the extracellular complex of GAPDH-A $\beta$  is cytotoxic for cultured neuronal cells. To test whether this would also be the case in mammals *in vivo*, we adopted two animal AD models: a chemical model, in which exogenous A $\beta$ 42 was introduced into the rat hippocampus, and a genetic model using 5XFAD mice. Animals were surgically infected with lentiviruses bearing either a plasmid overexpressing GAPDH (pLOC-GAPDH) or shRNA targeting GAPDH to generate, respectively, animals with high or low GAPDH expression in the hippocampus. Nine weeks after lentivirus administration, GAPDH levels in the hippocampi of the animals were estimated by immunoblotting. Rats infected with shGAPDH or pLOC-GAPDH displayed, respectively, a 69% decrease or 9-fold increase in GAPDH, as compared to untreated animals (Fig. 3a). Similar down- and up-regulation of GAPDH occurred in the wild-type (wt) and 5XFAD mice (Fig. 3b and Fig. S3).

MRI was used to estimate the damage to the rat hippocampus caused by A $\beta$ 42 introduced into the CA1 area. Image analysis showed that the injury zone in A $\beta$ 42-treated animals positively correlated with the GAPDH level in the hippocampus (Fig. 3c). The ratio between the lesion volume and the total hippocampus was the highest in the pLOC-GAPDH+A $\beta$ 42 group (14.98%) and minimal in the shGAPDH+A $\beta$ 42 group (2.88%), which is similar to that in sham-operated rats (2.52%) (Fig. 3c,d).

To determine whether the tissue damage was due to apoptotic death of hippocampal cells, histological sections of the hippocampus were stained with the TUNEL assay. The level of apoptosis positively correlated with the level of GAPDH (Fig. 3e,f). The stereotactic surgery procedure caused some cell death in the brain; the number of apoptotic cells in operated animals in all control groups was approximately 20%. However, injection of A $\beta$ 42 caused the accumulation of  $39.6 \pm 3.3\%$  apoptotic cells while the injection of pLOC-GAPDH+A $\beta$ 42 caused the accumulation of  $45.6 \pm 4.9\%$  apoptotic cells (Fig. 3e,f). Remarkably, the level of apoptosis in the brains of rats injected with shGAPDH+A $\beta$ 42 was similar to that of sham-operated animals ( $24.5 \pm 0.3\%$ ) (Fig. 3e,f).

Analogous to the rat model, the level of apoptotic cells in the hippocampus of 5XFAD mice was elevated 3.5-fold by the injection of pLOC-GAPDH, as compared to untreated 5XFAD mice ( $35.1 \pm 0.5$  vs.  $10.5 \pm 0.7$ ) (Fig. 3g,h). The number of apoptotic cells in mice with knocked-down GAPDH was close to that of sham-operated 5XFAD mice ( $13.2 \pm 1.7\%$  vs.  $10.5 \pm 0.7\%$ ) (Fig. 3g,h). Thus, the level of GAPDH in the

hippocampus of AD-simulating animals directly correlates with the level of apoptosis associated with AD pathology.

We next examined the behavioral effect of endogenous GAPDH in AD model animals. Wistar male rats at P180 with high and low GAPDH were tested in a Morris water maze at P240 to investigate learning function. In both models of AD, animals with elevated levels of GAPDH in the hippocampus demonstrated significant cognitive impairment. The platform searching time for rats injected with pLOC-GAPDH+A $\beta$ 42 was, respectively, 1.6-fold and 2.4-fold longer than for the A $\beta$ 42 group and the untreated group (Fig. 4a). In the 5XFAD mouse model, animals injected with pLOC-GAPDH demonstrated a 2-fold delay in searching comparing to that in untreated animals. In contrast, animals injected with shGAPDH displayed a shorter searching time than untreated animals (Fig. 4b).

To correlate the degree of memory deficit with GAPDH cytotoxicity, we obtained CSF from each group of rats and estimated its effect on SH-SY5Y neuroblastoma cell survival. As expected, the most toxic CSF was obtained from the animals injected with pLOC-GAPDH+A $\beta$ 42, killing  $22.2 \pm 3.1\%$  of the cells (Fig. 4c).

The enhanced cytotoxicity of CSF obtained from AD patients was linked to aggregation of A $\beta$ -GAPDH (Fig. 1). To confirm this finding in the AD animal models, the amount of A $\beta$ -GAPDH aggregates in CSF and hippocampi from all treated animals was estimated using ultrafiltration. SDS-insoluble aggregates containing both A $\beta$ 42 and GAPDH were found in the hippocampus and CSF of rats injected with A $\beta$ 42 and pLOC-GAPDH+A $\beta$ 42 (Fig. 5). Likewise, the level of A $\beta$ 42 and GAPDH aggregation in 5XFAD mice injected with pLOC-GAPDH was significantly higher than in control mice (Fig. 5).

### **GAPDH ligand reduces A $\beta$ aggregation and ameliorates spatial memory in 5XFAD mice**

Previously, we have showed that a cortisol derivative (Fig. 6a), hydrocortisone 21-hemisuccinate (RX-624), specifically binds GAPDH and reduces its aggregation [36]. To test whether RX-624 is capable of reducing aggregation of A $\beta$ -GAPDH complexes as well, we mixed A $\beta$ 42, GAPDH and tTG in the presence of 0.3, 1.0 and 3.0  $\mu$ M of RX-624 followed by ultrafiltration and immunoblotting. RX-624 diminished aggregation of A $\beta$ -GAPDH complexes in a dose-dependent manner, reaching 80-fold reduction at 3.0  $\mu$ M (Fig. 6b).

To test the effectiveness of RX-624 in animal models of AD, wt and 5XFAD mice were divided into three groups: no treatment, vehicle, and RX-624 (2 mg/kg/injection). The treatment started at P70 of age and lasted for next 150 days, one injection per week. Two weeks after the last injection spatial memory of experimental mice was evaluated using the Morris water maze. 5XFAD mice treated with RX-624 demonstrated significant memory recovery; the platform searching time was similar to that of wt mice ( $22.7 \pm 4.4$  vs.  $26.2 \pm 6.6$  sec) and was greatly reduced compared to that of untreated or vehicle-treated 5XFAD mice (Fig. 6c). Analysis of swimming paths performed following the instructions given by Gehring et al. [37], also demonstrated that the learning capacity of 5XFAD mice treated with RX-624 approached that of wt mice (Fig. 6d).

Next, the hippocampi from two animals of all three groups were isolated and subjected to ultrafiltration. SDS-insoluble aggregates containing both A $\beta$  and GAPDH were detected in control 5XFAD animals, whereas the hippocampi of mice treated with RX-624 were completely free of aggregates, demonstrating the crucial role of GAPDH in promoting the formation of extracellular amyloid complexes (Fig. 6e).

## Discussion

Prion-like transmission of A $\beta$  oligomers and tau fibrils within the brain is thought to account, at least in part, for cell death in AD [38,39]. The late stage of AD pathogenesis is characterized by massive neuronal cell death and persistent accumulation of extracellular A $\beta$  in the brain, apparently due to impaired clearance [40]. Recently, the presence of exogenous soluble aggregates of A $\beta$  in CSF of AD patients has been associated with enhanced neurotoxicity [41]. We argue that in addition to A $\beta$ , CSF and interstitial fluid contain proteins leaking from dying brain cells. Together they form soluble and insoluble aggregates typical of many neurodegenerative pathologies. In this study we focused on GAPDH, an enzyme known for its propensity to form aggregates when oxidized or complexed with mutant proteins [42].

We found that the amount of soluble GAPDH and insoluble GAPDH complexes with A $\beta$  in the CSF from patients with various stages of AD directly correlated with the severity of the disease; the increase was apparent at moderate and severe stages of AD, as classified by MMSE. Remarkably, the cytotoxic activity of CSF samples increased concurrently with the pathology index, suggesting that extracellular GAPDH promotes AD pathogenesis. We hypothesized that the cytotoxic effect of GAPDH aggregation or co-aggregation with A $\beta$  occurs when the enzyme concentration in extracellular space, CSF, or interstitial fluid reaches a threshold level that results in aggregation. FRET analysis directly supports the existence of stable complexes between A $\beta$  and GAPDH. We detect them as early as the 'Mild AD' stage, but find much more of them at 'Moderate' and 'Severe' AD stages. Thus, the A $\beta$ -GAPDH complexes may serve as a reliable biomarker of AD progression, comparable to other already established markers like CSF amyloid beta 42 (A $\beta$ 42), total tau (t-tau), and tau phosphorylated at threonine 181 (p-tau) [43], or recently proposed ones like neurogranin/ $\beta$ -site APP-cleaving enzyme 1 (Ng/BACE1) [44].

It has been proposed that non-native forms of GAPDH can bind to soluble amyloid-beta peptide (1-42) yielding a non-ordered complex [45]. In contrast, we present evidence for covalently bonded extracellular A $\beta$ -GAPDH complexes. Our results indicate that such complexes constitute a major fraction of A $\beta$ -GAPDH aggregating material. The formation of these complexes requires tTG activity; inhibition of tTG with cystamine prevents stable co-aggregation. Moreover, we show that tTG stabilizes A $\beta$ -GAPDH complexes via specific covalent bonding between A $\beta$  Q15 and GAPDH lysines. We further show that these covalently bound complexes largely account for A $\beta$  toxicity in animal models of AD.

Overexpression of GAPDH impaired cognitive function in 5XFAD mice. As expected, apoptosis played a significant role in neuronal death in these animals. The extent of apoptosis was comparable to that observed in animals' cells treated with excessive A $\beta$  to trigger an oxidative apoptotic cascade [46,47]. Consistently, the cytotoxicity of CSF from animals that overproduce GAPDH was substantially higher

than that of control animals. Recently, GAPDH was shown to be released from PC-12HttQ103 rat neuroblastoma cells in complex with long poly-Q chains [16]. Analogous to the increased cytotoxicity of extracellular GAPDH-poly-Q complexes, we propose that a similar phenomenon occurs in AD models. It appears that irrespective of the initial cause of cellular death, the released GAPDH augments the cytotoxicity of pathogenic misfolded polypeptides.

The increased accumulation of A $\beta$  aggregates in hippocampi of animals that overexpress GAPDH is likely due to compromised A $\beta$  clearance. A $\beta$  clearance is considered to be a critical part of AD etiology [40]. A $\beta$  itself has a relatively short half-life in the brain; approximately 8 hours in human CSF [48]. Proteins like ApoA-I, transthyretin, complement protein C3 [49], or acetylcholinesterase [50] have been shown to promote the retention of A $\beta$  in the extra-neuronal space. GAPDH appears to act as a major AD potentiator via a conceptually similar pathway.

Emerging as a significant pathological factor in the late stages of AD, GAPDH may also be used as a promising therapeutic target. Indeed, we show here that hydrocortisone 21-hemisuccinate (RX-624), which specifically binds GAPDH and diminishes its aggregation [36], has drastically reduced the accumulation of aggregated A $\beta$  in hippocampi of 5XFAD mice and greatly improved their spatial memory. Earlier, our group has reported that RX-624 also reduces the cytotoxicity of the extracellular GAPDH-polyQ complexes [36]. Thus RX-624 may be a constituent of a novel class of anti-neurodegeneration therapeutic molecules that diminish the propagation of cytotoxic heterologous protein aggregates, a hypothesis that warrants further exploration in other animal models involving larger mammals.

## Conclusions

In summary, we demonstrate here that upon neuronal cell death the most ubiquitous housekeeping protein, GAPDH, acts as a promoter of AD pathogenesis by forming a covalent complex with extracellular A $\beta$ . The amount of A $\beta$ -GAPDH in CSF correlates well with the AD progression and is, therefore, a potentially useful marker for AD diagnostics. Despite setbacks in the clinical treatment of late-stage AD, monoclonal antibodies that neutralize the aggregation-prone and toxic motifs of A $\beta$  remain the most promising experimental anti-AD drugs [51]. Our data also suggest that GAPDH inhibitors/binders, such as RX-624, may render those drugs more efficient in the therapy of AD-associated pathologies.

## List Of Abbreviations

AD - Alzheimer disease

A $\beta$  - amyloid- $\beta$

GAPDH - glyceraldehyde-3-phosphate dehydrogenase

CSF – Cerebrospinal Fluid

ELISA – Enzyme-Linked Immunosorbent Assay

FRET – Förster Resonance Energy Transfer

LDH – Lactate Dehydrogenase

tTG - tissue transglutaminase

MCI – Mild Cognitive Impairment

MMSE - Mini-Mental State Examination

NINCDS-ARDRA - National Institute of Neurological Disorders and Stroke - Alzheimer's Disease and Related Disorders Association

PBS – Phosphate-Buffered Saline

## **Declarations**

### **Ethics approval and consent to participate**

For all patients participating in the study a written informed consent was obtained either directly from the capable individuals or from legally authorized representatives, according to the Declaration of Helsinki (World Medical Association, 2013), and the Research Ethics Committee approvals at Care Units for Alzheimer's Disease Problems 'Saint Eleni' and 'Saint Ioannis' in Thessaloniki, Greece.

### **Consent for publication**

Not applicable

### **Availability of data and materials**

The authors declare that all the data supporting the finding of this study are available within the article or its Supporting information, or from the corresponding author upon reasonable request.

### **Competing interests**

No authors had conflicts of interests relevant to this study

### **Funding**

This work was supported by grants from the Russian Scientific Foundation (RSCF) 19-74-30007 (SAK, VAM, and AAM); RSCF 18-74-10087 (VFL, ERM and ADN), the Ministry of Science and Higher Education of the Russian Federation (0124-2019-0002) (IVG and BAM), and the Glenn Foundation for Medical Research, Blavatnik Family Foundation, and by the Howard Hughes Medical Institute (EN).

## Authors' contributions

VFL, BAM, and EN designed, planned and oversaw the entire project; MT provided and analyzed clinical data, and collected CSFs from MCI and AD patients; VFL, ERM, KAB, MAS, and ADN performed most experiments and data analyses; AAM, SAK, and VAM performed Amyloid- $\beta$  analyses; BAM, SAK, IVG, ML and EN performed data quality control and cowrote the manuscript. All authors have reviewed and approved the final version of the manuscript.

## ACKNOWLEDGEMENTS

Authors thank Roman Suezov (Institute of Cytology RAS, St. Petersburg, Russia) for help with mice experiments; Natalia Ninkina (Cardiff University, UK) for providing 5XFAD mice; Vladimir Muronetz (Moscow State University, Moscow, Russia) for the gift of purified GAPDH; Anton Mazur and Peter Tolstoy (Pavlov First Medical University, St. Petersburg, Russia) for help with MRI, and the Research Centre of Saint-Petersburg State University for AFM access.

## Authors' Information

**Vladimir F. Lazarev** - Institute of Cytology of the Russian Academy of Sciences (RAS), 4

Tikhoretsky Ave., 194064 St. Petersburg, Russia; Engelhardt Institute of Molecular Biology, Russian Academy of Sciences, 32 Vavilova, 119991, Moscow, Russia; Howard Hughes Medical Institute, New York University School of Medicine, New York, NY, USA. E-mail: [vl.lazarev@gmail.com](mailto:vl.lazarev@gmail.com).

**Magda Tsolaki** - 1<sup>st</sup> University Department of Neurology, AHEPA hospital Aristotle University of Thessaloniki and Greek Alzheimer Association, Thessaloniki, Greece. E-mail: [tsolakim1@gmail.com](mailto:tsolakim1@gmail.com).

**Elena R. Mikhaylova** - Institute of Cytology of the Russian Academy of Sciences (RAS), 4

Tikhoretsky Ave., 194064 St. Petersburg, Russia. E-mail: [mikhailovaer@yandex.ru](mailto:mikhailovaer@yandex.ru).

**Konstantin A. Benken** - Saint Petersburg State University, 26 Universitetskiy Pr., 198504 St.Petersburg, Russia. E-mail: [cbenken@gmail.com](mailto:cbenken@gmail.com).

**Maxim A. Shevtsov** - Institute of Cytology of the Russian Academy of Sciences (RAS), 4

Tikhoretsky Ave., 194064 St. Petersburg, Russia; Klinikum rechts der Isar, Technische Universität München, 22 Ismaninger Str., 81675 Munich, Germany. E-mail: [shevtsov-max@mail.ru](mailto:shevtsov-max@mail.ru).

**Alina D. Nikotina** - Institute of Cytology of the Russian Academy of Sciences (RAS), 4

Tikhoretsky Ave., 194064 St. Petersburg, Russia. E-mail: [nikotina.ad@gmail.com](mailto:nikotina.ad@gmail.com).

**Mirna Lechpammer** - Department of Biochemistry and Molecular Pharmacology, New York University School of Medicine, New York, NY, USA. E-mail: [mirna.lechpammer@nyulangone.edu](mailto:mirna.lechpammer@nyulangone.edu).



**Vladimir A. Mitkevich** - Engelhardt Institute of Molecular Biology, Russian Academy of Sciences, 32 Vavilova, 119991, Moscow, Russia. E-mail: [mitkevich@gmail.com](mailto:mitkevich@gmail.com).

**Alexander A. Makarov** - Engelhardt Institute of Molecular Biology, Russian Academy of Sciences, 32 Vavilova, 119991, Moscow, Russia. E-mail: [aamakarov@eimb.ru](mailto:aamakarov@eimb.ru).

**Sergey A. Kozin** - Engelhardt Institute of Molecular Biology, Russian Academy of Sciences, 32 Vavilova, 119991, Moscow, Russia. E-mail: [kozinsa@gmail.com](mailto:kozinsa@gmail.com).

**Boris A. Margulis** - Institute of Cytology of the Russian Academy of Sciences (RAS), 4 Tikhoretsky Ave., 194064 St. Petersburg, Russia. E-mail: [margulis@incras.ru](mailto:margulis@incras.ru).

**Irina V. Guzhova** - Institute of Cytology of the Russian Academy of Sciences (RAS), 4 Tikhoretsky Ave., 194064 St. Petersburg, Russia. E-mail: [irina.guzh@gmail.com](mailto:irina.guzh@gmail.com).

**Evgeny Nudler** - Department of Biochemistry and Molecular Pharmacology, New York University School of Medicine, New York, NY, USA; Howard Hughes Medical Institute, New York University School of Medicine, New York, NY, USA. E-mail: [evgeny.nudler@nyulangone.org](mailto:evgeny.nudler@nyulangone.org).

## References

1. Jagust W, Jack Jr CR, Bennett DA, Blennow K, Haerberlein SB, Holtman DM, Jessen F, Karlawish J, Liu E, Molinuevo JL, Montine T, Phelps C, Rankin KP, Rowe CC, Scheltens P, Siemers E, Sperling R, "Alzheimer's disease" is neither "Alzheimer's clinical syndrome" nor "dementia". *Alzheimers Dement.* 2019;15:153-157.
2. Kunkle BW, et al, Genetic meta-analysis of diagnosed Alzheimer's disease identifies new risk loci and implicates A $\beta$ , tau, immunity and lipid processing. *Nat. Genetics.* 2019;51:414-430.
3. Selkoe DJ, Hardy J. The amyloid hypothesis of Alzheimer's disease at 25 years. *EMBO Mol. Med.* 2016; 8:595-608.
4. Karran E, Mercken M, De Strooper B. The amyloid cascade hypothesis for Alzheimer's disease: an appraisal for the development of therapeutics. *Nat. Rev. Drug Discov.* 2011;10:698-712.
5. Jin M, Shepardson N, Yang T, Chen G, Walsh D, Selkoe DJ. Soluble amyloid b-protein dimers isolated from Alzheimer cortex directly induce Tau hyperphosphorylation and neuritic degeneration. *Natl. Acad. Sci. U.S.A.* 2011;108:5819-5824.
6. Mc Donald JM, O'Malley TT, Liu W, Mably AJ, Brinkmalm G, Portelius E, Wittbold 3<sup>rd</sup> WM, Frosch MP, Walsh DM. The aqueous phase of Alzheimer's disease brain contains assemblies built from ~4 and ~7 kDa A $\beta$  species. *Alzheimers Dement.* 2015;11:1286-1305.
7. Baig MH, Ahmad K, Rabbani G, Choi I. Use of peptides for the management of Alzheimer's disease: Diagnosis and Inhibition. *Aging Neurosci.* 2018;10: 21.

8. Li Y, Nowotny P. Association of late-onset Alzheimer's disease with genetic variation in multiple members of the GAPD gene family. *Proc. Natl. Acad. Sci. U.S.A.* 2004;101:15688-15693.
9. Sirover MA. On the functional diversity of glyceraldehyde-3-phosphate dehydrogenase: biochemical mechanisms and regulatory control. *Biochim. Biophys. Acta* 2011;1810:741-751.
10. Tamaoka A, Endoh R, Shoji S, Takahashi K, Teplow DB, Selkoe DJ, Mori H. Antibodies to amyloid  $\beta$  protein ( $A\beta$ ) crossreact with glyceraldehyde-3-phosphate dehydrogenase (GAPDH). *Neurobiol. Aging* 1996;17:405–414.
11. Wang Q, Woltjer RL, Cimino PJ, Pan C, Montine KS, Zhang J, Montine TJ. Proteomic analysis of neurofibrillary tangles in Alzheimer disease identifies GAPDH as a detergent-insoluble paired helical filament tau binding protein. *FASEB J.* 2005;19:869–871.
12. Wilhelmus MM, de Jager M, Bakker EN, Drukarch B. Tissue transglutaminase in Alzheimer's disease: involvement in pathogenesis and its potential as a therapeutic target. *J. Alzheimers* 2014;42 Suppl 3: S289-303.
13. Burke JR, Enghild JJ, Martin ME, Jou YS, Myers RM, Roses AD, Vance JM, Strittmatter WJ. Huntingtin and DRPLA proteins selectively interact with the enzyme GAPDH. *Nat. Med.* 1996;2:347-350.
14. Orru S, Ruoppolo M, Francese S, Vitagliano L, Marina G, Esposito C. Identification of tissue transglutaminase-reactive lysine residues in glyceraldehyde-3-phosphate dehydrogenase. *Protein Sci.* 2002;11:137-146.
15. Guzhova IV, Lazarev VF, Kaznacheeva AV, Ippolitova MV, Muronetz VI, Kinev AV, Margulis BA. Novel mechanism of Hsp70 chaperone-mediated prevention of polyglutamine aggregates in a cellular model of Huntington disease. *Hum. Mol. Genet.* 2011;20:3953-3963.
16. Mikhaylova ER, Lazarev VF, Nikotina AD, Margulis BA, Guzhova IV. Glyceraldehyde 3-phosphate dehydrogenase augments the intercellular transmission and toxicity of polyglutamine aggregates in a cell model of Huntington disease. *J. Neurochem.* 2016;136:1052-1063.
17. Hartley DM, Zhao C, Speier AC, Woodard GA, Li S, Li Z, Walz T. Transglutaminase induces protofibril-like amyloid b-protein assemblies that are protease-resistant and inhibit long-term potentiation. *J. Biol. Chem.* 2008;283:16790-16800.
18. McKhann G, Drachman D, Folstein M, Katzman R, Price D, Stadlan EM. Clinical diagnosis of Alzheimer's disease—report of the NINCDS–ADRDA work group under the auspices of Department of Health and Human Services Task Force on Alzheimer's disease. *Neurology* 1984;34:939–944.
19. Petersen RC, Smith GE, Waring SC, Ivnik RJ, Kokmen E, Targelos EG. Aging, memory, and mild cognitive impairment. *Int. Psychogeriatr.* 1997;9: 65-69.
20. Folstein MF, Folstein SE, McHugh PR. "Mini-mental state". A practical method for grading the cognitive state of patients for the clinician. *J. Psychiat. Res.* 1975;12:189-198.
21. World Medical Association Declaration of Helsinki: Ethical Principles for Medical Research Involving Human Subjects. *JAMA* 2013;310:2191-2194.

22. Lazarev VF, Nikotina AD, Semenyuk PI, Evstafyeva DB, Mikhaylova ER, Muronrtz VI, Shevtsov MA, Tolkacheva AV, Dobrodumov AV, Shavarda AL, Guzhova IV, Margulis BA. Small molecules preventing GAPDH aggregation are therapeutically applicable in cell and rat models of oxidative stress. *Free Rad. Biol.Med.* 2016;92: 29-38.
23. Mosmann T. Rapid colorimetric assay for cellular growth and survival: application to proliferation and cytotoxicity assays. *J. Immunol Methods* 1983;65:55-63.
24. Li X, Bao X, Wang R. Experimental models of Alzheimer's disease for deciphering the pathogenesis and therapeutic screening. *Int. J. Mol. Med.* 2016;37:271-283.
25. Paxinos G, Watson C. The rat brain in stereotaxic coordinates. Academic press, Sydney, 1982.
26. Quan QK, Wang J, Li X, Wang Y. Ginsenoside Rg1 decreases A $\beta$ 1-42 level by upregulating PPAR $\gamma$  and IDE expression in the hippocampus of a rat model of Alzheimer's disease. *PLoS One* 2013;8:e59155.
27. Peters OM, Connor-Robson N, Sokolov VB, Aksinenko AY, Kukharsky MS, Bachurin SO, Ninkina N, Buchman VL. Chronic administration of Dimebon does not ameliorate amyloid- $\beta$  pathology in 5xFAD transgenic mice. *J. Alzheimers Dis.* 2013;36:589-596.28. Rosen GD et al. The Mouse Brain Library @ [www.mbl.org](http://www.mbl.org). in Int Mouse Genome Conference 14, 166 Available at: [www.mbl.org](http://www.mbl.org).
29. Morris R. Developments of a water-maze procedure for studying spatial learning in the rat. *J. Neurosci. Methods* 1984;11:47-60.
30. Sankowski R, Huerta TS, Karla R, Klein T, Strohl JJ, Al-Abed Y, Robbiati S, Huerta PH. Large-scale validation of the paddling pool task in the clockmaze for studying hippocampus-based spatial cognition in mice. *Behav. Neurosci.* 2019;13:121.
31. Castillo WO, Aristizabal-Pachon AF, de Lima Montaldi AP, Sakamoto-Hojo ET, Takahashi CS. Galanthamine decreases genotoxicity and cell death induced by  $\beta$ -amyloid peptide in SH-SY5Y cell line. *Neurotoxicology* 2016;57:291-297.
32. Karpuj MV, Becher MW, Springer JE, Chabas D, Youssef S, Pedotti R, Mitchel D, Steinman L. Prolonged survival and decreased abnormal movements in transgenic model of Huntington disease, with administration of the transglutaminase inhibitor cystamine. *Nat. Med.* 2002;8:143-149.
33. Griffin M, Casadio R, Bergamini CM. Transglutaminases: nature's biological glues. *Biochem. J.* 2002;368:377-396.
34. Kulikova AA, Cheglakov IB, Kukharsky MS, Ovchinnikov RK, Kozin SA, Makarov AA. Intracerebral Injection of Metal-Binding Domain of A $\beta$  Comprising the Isomerized Asp7 Increases the Amyloid Burden in Transgenic Mice. *Neurotox. Res.* 2016;29:551-557.
35. Kaja S, Payne AJ, Naumchuk Y, Koulen P. Quantification of lactate dehydrogenase for cell viability testing using cell lines and primary cultured astrocytes. *Cur.r Protoc. Toxicol.* 2017;72:2.26.1-2.26.10.
36. Lazarev VF, Mikhaylova ER, Dutysheva EV, Suezov R, Guzhova IV, Margulis BA. A hydrocortisone derivative binds to GAPDH and reduces the toxicity of extracellular polyglutamine-containing aggregates. *Biochem. Biophys. Res. Commun.* 2017;487: 723-727.

37. Gehring TV, Luksys G, Sandi C, Vasilaki E. Detailed classification of swimming paths in the Morris Water Maze: multiple strategies within one trial. *Sci. Rep.* 2015; 5:
38. Nath S, Agholme L, Kurudenkandy FR, Granseth B, Marcusson J, Hallbeck M. Spreading of neurodegenerative pathology via neuron-to-neuron transmission of  $\beta$ -amyloid. *J. Neurosci.* 2012;32:8767-8777.
39. Jucker M, Walker LC. Self-propagation of pathogenic protein aggregates in neurodegenerative diseases. *Nature* 2013;501:45-51.
40. Mawuenyega KG, Sigurdson W, Ovod V, Munsell L, Kasten T, Morris JC, Yarasheski KE, Bateman RJ. Decreased clearance of CNS  $\beta$ -amyloid in Alzheimer's disease. *Science* 2010;330:1774.
41. De S, Whiten DR, Ruggeri FC, Hughes C, Rodrigues M, Sideris DI, Taylor CG, Aprile FA, Muydermans S, Knowles TPJ, Vendruscolo M, Bryant C, Blennow K, Skoog I, Kern S, Zetterberg H, Klenerman D. Soluble aggregates present in cerebrospinal fluid change in size and mechanism of toxicity during Alzheimer's disease progression. *Acta Neuropathol. Commun.* 2019;7:
42. Gerszon J, Rodacka A. Oxidatively modified glyceraldehyde-3-phosphate dehydrogenase in neurodegenerative processes and the role of low molecular weight compounds in counteracting its aggregation and nuclear translocation. *Ageing Res. Rev.* 2018;48:21-31.
43. Molinuevo JL, Ayton S, Batrla R, Bendar MM, Bittner T, Cummings J, Fagan AM, Hampel H, Mielke MM, Mikulskis A, O'Bryant S, Scheltens P, Sevigny J, Shaw LW, Soares HD, Tong G, Trojanovski JQ, Zetterberg H, Blennow K. Current state of Alzheimer's fluid biomarkers. *Acta Neuropathol.* 2018;136:821-853.
44. Kirsebom BE, Nordengen K, Selnes P, Waterloo K, Torsetnes SB, Gisladdottir B, Brix B, Vanmechelen E, Brathen G, Hessen E, Aarsland D, Fladby T. Cerebrospinal fluid neurogranin/ $\beta$ -site APP-cleaving enzyme 1 predicts cognitive decline in preclinical Alzheimer's disease. *Alzheimers Dement. (N Y)* 2018;4:617-627.
45. Naletova I, Schmalhausen E, Kharitonov A, Katrukha A, Saso L, Caprioly A, Muronetz V. Non-native glyceraldehyde-3-phosphate dehydrogenase can be an intrinsic component of amyloid structures. *Biochim. Biophys. Acta* 2008;1784:2052-2058.
46. Tamagno E, Robino G, Obbili A, Bardini P, Arango M, Parola M, Danni O. H<sub>2</sub>O<sub>2</sub> and 4-hydroxynonenal mediate amyloid  $\beta$ -induced neuronal apoptosis by activating JNKs and p38MAPK. *Exp Neurol.* 2003;180:144-155.
47. Ill-Raga G, Ramos-Fernandez E, Guix FX, Tajés M, Bosh-Morato M, Palomer E, Godoy J, Belmar S, Cerpa W, Simpkins JW, Inestrosa ANC, Munoz FJ. Amyloid- $\beta$  peptide fibrils induce nitro-oxidative stress in neuronal cells. *J. Alzheimers Dis.* 2010;22:641-652.
48. Bateman RJ, Munsell LY, Morris JC, Swarm R, Yarasheski KE, Holtzman DM. Human amyloid- $\beta$  synthesis and clearance rates as measured in cerebrospinal fluid in vivo. *Nat. Med.* 2006;12:856-861.

49. Liu S, Suzuki H, Ito H, Korenaga T, Akatsu H, Meno K, Uchida K. Serum levels of proteins involved in amyloid- $\beta$  clearance are related to cognitive decline and neuroimaging changes in mild cognitive impairment. *Alzheimers Dement. (Amst)* 2019;11:85-97.
50. Jean L, Brimijoin S, Vaux DJ. In vivo localization of human acetylcholinesterase-derived species in a  $\beta$ -sheet conformation at the core of senile plaques in Alzheimer's disease. *Biol. Chem.* **294**, 6253-6272 (2019).
51. van Dyck CH. Anti-Amyloid- $\beta$  Monoclonal Antibodies for Alzheimer's Disease: Pitfalls and Promise. *Biol. Psychiatry* 2018;83:311-319.

## Additional File

Additional file 1.pdf

Fig. S1. GAPDH and A $\beta$ 42 form SDS insoluble complex in the presence of tTG.

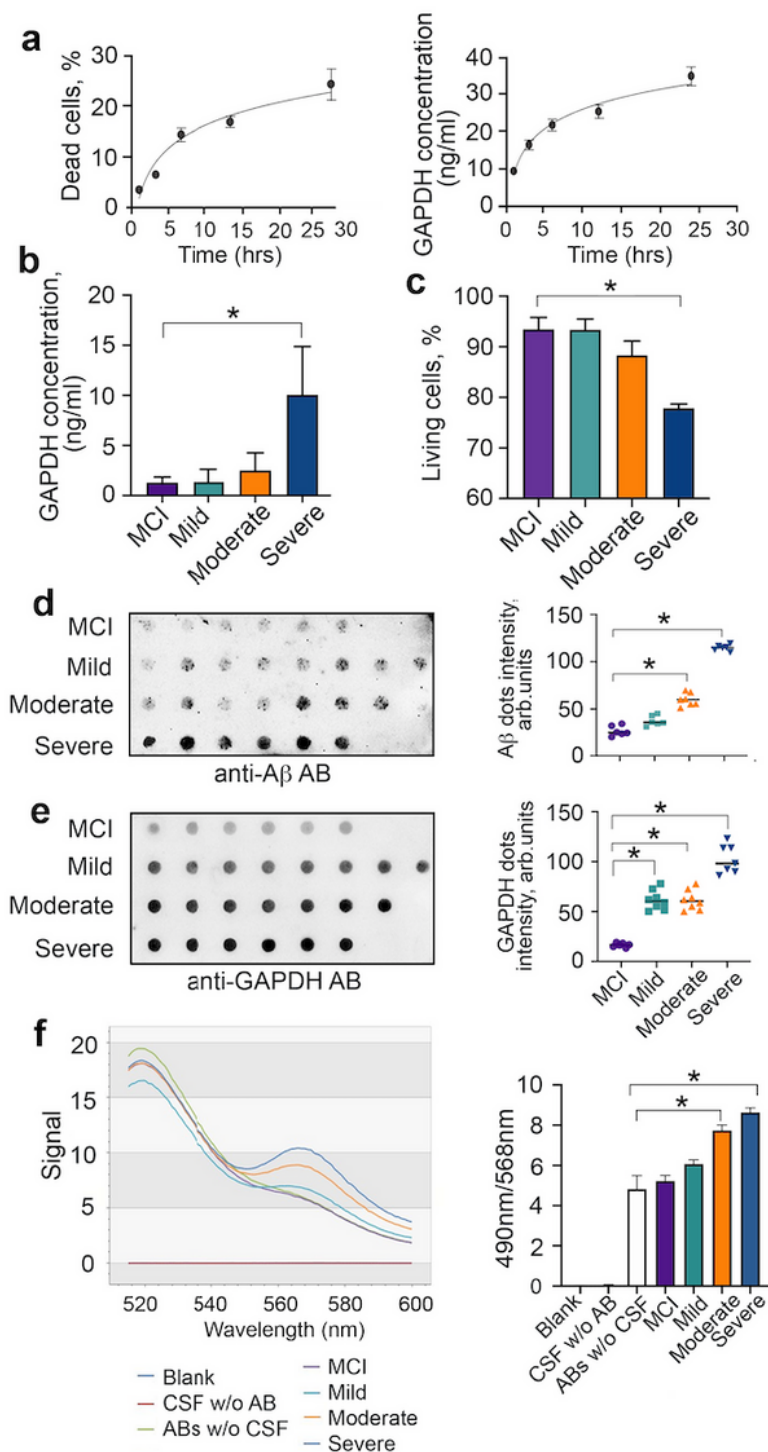
Fig. S2. An arbitrary cytosolic protein (LDH) released from dying cells does not form insoluble aggregates with A $\beta$ .

Fig. S3. Accumulation of GAPDH in hippocampus of experimental animals.

Table S1. Cohort of MCI and AD patients used for GAPDH detection in CSF

Table S2. Cohort of MCI and AD disease patients used for detecting A $\beta$ -GAPDH aggregates in CSF.

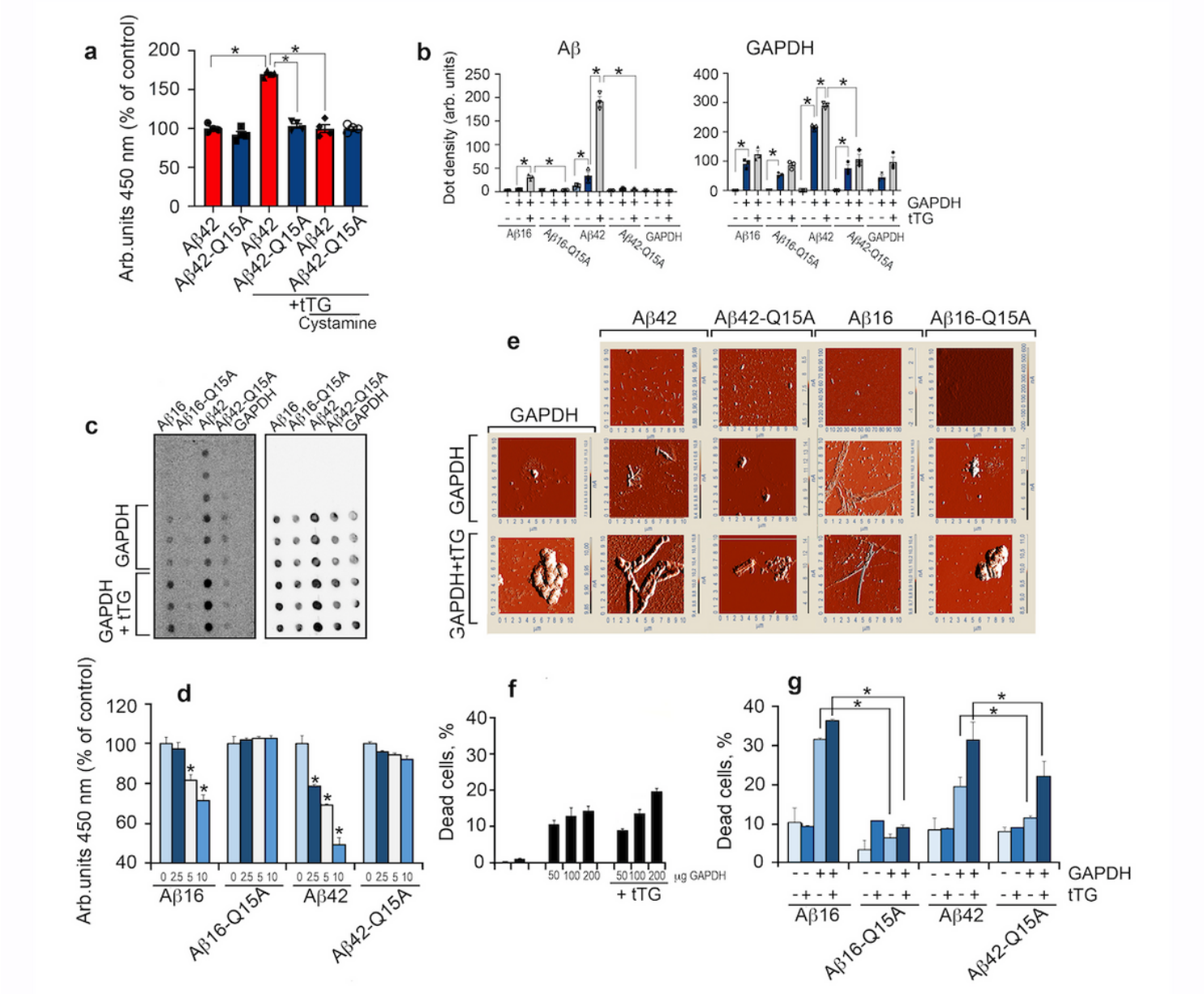
## Figures



**Figure 1**

The level of GAPDH correlates with the stage of AD. (a) SH-SY5Y cells were incubated with A $\beta$ 42 (6  $\mu$ M) for the indicated times and the level of dead cells was measured with the CytoTox-96 assay (left panel). Levels of GAPDH measured in the same cell growth media with a two-site (sandwich-type) ELISA (right panel). (b) Levels of GAPDH measured in CSF of patients with MCI, mild, moderate, and severe stages of AD using the same ELISA method; \*  $p < 0.01$ . (c) SH-SY5Y cells were incubated with CSF from (b) for 48

h, and the amount of cell death was estimated using the CytoTox-96 assay; \*  $p < 0.01$ . (d) and (e) CSF analysis by the filter-trap assay. The representative filter was probed with antibodies against A $\beta$  (d, left panel) or GAPDH (e, left panel). The quantitation of blots using TotalLab software (right panels); \*  $p < 0.01$ . (f) FRET analysis of GAPDH-A $\beta$  interaction in CSF samples from AD patients. Representative emission spectra detected at 516-600 nm, excitation 488 nm (left panel) and quantitation of the FRET signals at excitation/emission 490/568 nm (right panel); \*  $p < 0.01$ .

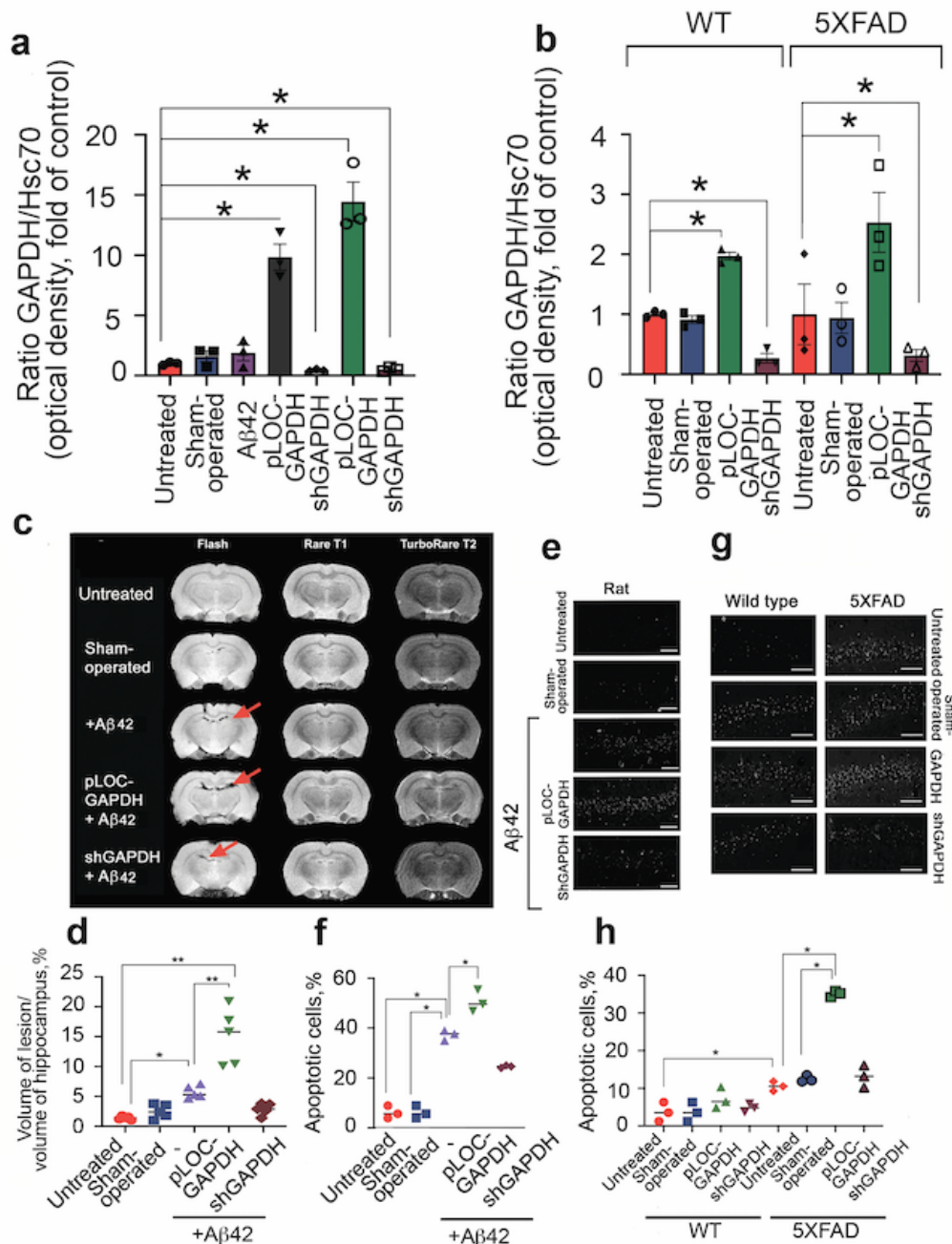


**Figure 2**

Covalently bound A $\beta$ 42 and GAPDH are highly cytotoxic. (a) Results of the GAPDH-A $\beta$ 42interaction assay. GAPDH was immobilized at the bottom of a 96-well plate followed by the addition of biotinylated A $\beta$ 42 with tTG alone or together with its inhibitor cystamine; \*,  $p < 0.05$ . (b) Filter-trap assay results for the

complexes of A $\beta$ 16, A $\beta$ 16Q15A, A $\beta$ 42, or A $\beta$ 42Q15A with GAPDH formed in 48 h. \* p <0.1. (c) Representative dot density from (B); light blue bars indicate A $\beta$ , dark blue – A $\beta$  with GAPDH, gray - A $\beta$  with GAPDH and tTG; (d) Results of the competitive protein-protein interaction assay. GAPDH was immobilized at the bottom of a 96-well plate, and biotinylated A $\beta$ 42 was added to the wells together with non-labeled A $\beta$ 42, A $\beta$ 16, A $\beta$ 42Q15A, and A $\beta$ 16Q15A in the following concentrations: 0  $\mu$ g (light blue bars), 2.5  $\mu$ g (dark blue bars), 5  $\mu$ g (white bars) and 10  $\mu$ g (bright blue bars). (e) AFM of the protein mixtures prepared as in (b). (f) GAPDH-A $\beta$ 42 cytotoxicity. SH-SY5Y cells were incubated with tTG (5  $\mu$ g/mL) or with GAPDH in various concentrations. Cell death was estimated with the CytoTox-96 assay (left panel). (g) SH-SY5Y cells were incubated with complexes of GAPDH (30  $\mu$ g/mL) with A $\beta$  peptides (6  $\mu$ M) in the presence or absence of tTG (5  $\mu$ g/mL); white bars depict toxicity of A $\beta$  alone, bright blue – with tTG, light blue – with GAPDH, and dark blue – with GAPDH and tTG. Cell death was estimated with the CytoTox-96 assay (right panel); \* p <0.05.

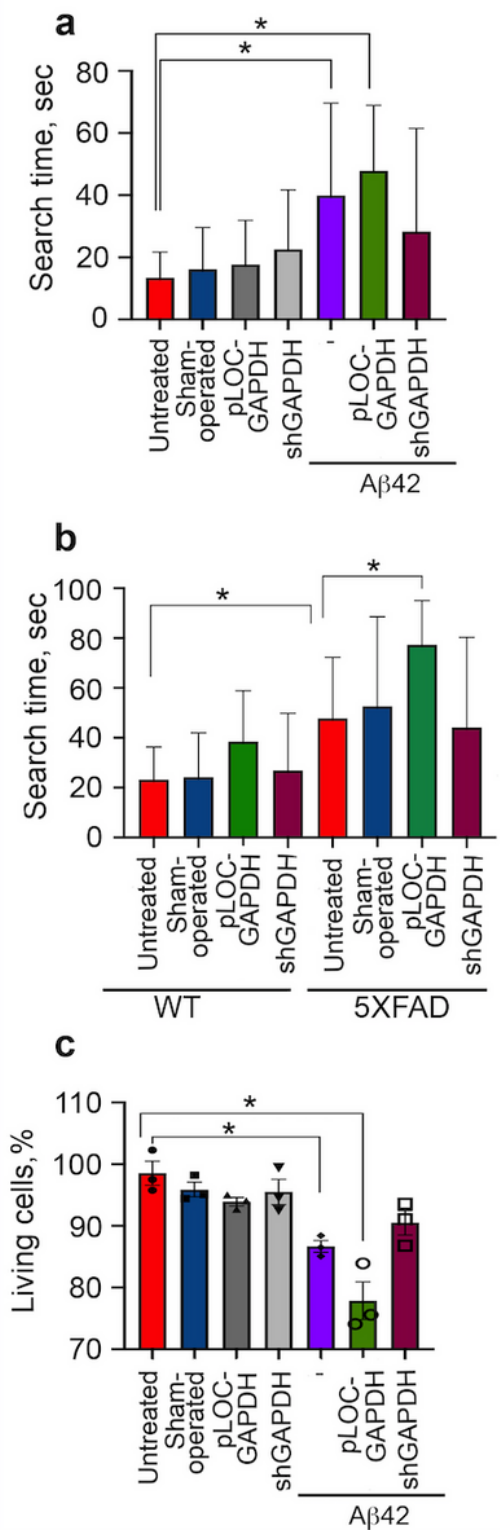




**Figure 3**

GAPDH in the hippocampus promotes brain injury in AD animal models. (a) Quantitation of GAPDH Western blots (Fig. S3) of hippocampal samples from rats injected with vehicle ( $n = 3$ , sham-operated), with lentiviral pLOC-GAPDH plasmid ( $n = 3$ ), or with lentiviral shGAPDH RNA ( $n = 3$ ), with or without A $\beta$ 42 administered at the same time with lentiviruses. An antibody to Hsc70 was used as the loading control. GAPDH/Hsc70 ratio presented as a fold change to control (untreated) for three animals in each

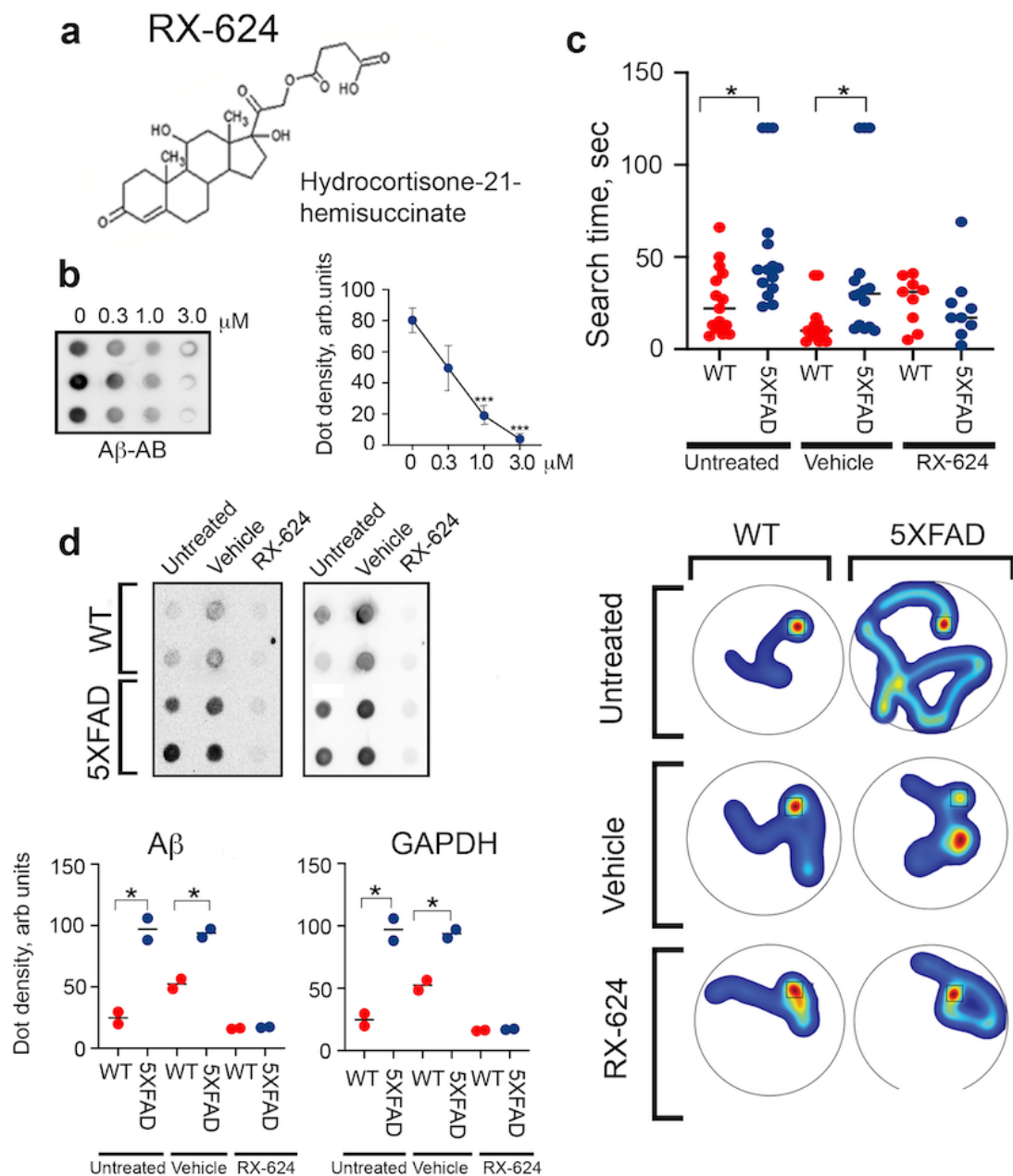
experimental group. (b) GAPDH Western blots of hippocampal samples from wt and 5XFAD mice injected with vehicle (n = 3, sham-operated), with lentiviral pLOC-GAPDH plasmid (n = 3), or with lentiviral shGAPDH RNA (n = 3). (c) Representative magnetic resonance brain images (upper panel) of rats two months after injection of A $\beta$ 42 together with lentiviral pLOC-GAPDH or A $\beta$ 42 together with lentiviral shGAPDH RNA. MRI protocols: Rare T1, TurboRare T2, and FLASH (gradient echo). Lesions volume (d) as measured with the aid of TotalLab software (n = 3 for each group); \*, p < 0.05; \*\*, p < 0.01. (e) Representative frontal histological slices (upper panel) of hippocampus from experimental animals stained with the Click-IT TUNEL kit (n = 3 in each experimental group); Scale bar = 100  $\mu$ m. The prevalence of apoptotic cells was calculated as the ratio of TUNEL-positive cells to DAPI-stained cells on histological slices (lower panel) using TotalLab software (n = 3 for each group). (f) Representative histological slices (upper panel) of hippocampi of wt and 5XFAD mice, sham-operated or injected with lentiviral pLOC-GAPDH or shGAPDH RNA; Scale bar = 100  $\mu$ m. The prevalence of apoptotic cells. (h) was calculated as in (d) (n = 3 for each group); \*, p < 0.05.



**Figure 4**

GAPDH in hippocampus of AD animals impairs spatial memory and increases CSF cytotoxicity. (a) Morris water-maze results for rats tested two months after surgery following the administration of lentiviral pLOC-GAPDH or shGAPDH RNA with or without A $\beta$ 42. (b) Morris water-maze results for 6-month old wt and 5XFAD mice treated as in (a). (c) SH-SY5Y cells were incubated with CSF from rats in (A) for 24 h, and the level of cell death was estimated with the CytoTox-96 assay;\* p < 0.05.





**Figure 6**

RX-624 improved spatial memory and decreases A $\beta$ -GAPDH aggregates in hippocampus of 5XFAD mice. (a) Chemical structure of RX-624. (b) Ultrafiltration assay with a mixture of A $\beta$ 42, GAPDH, and tTG in the presence of the indicated concentrations of RX-624. Representative filter (left panel) was probed with antibody against A $\beta$ . Dot intensity data from three independent experiments (right panel), \* $p < 0.01$ . (c) Water-maze memory test. WT and 5XFAD mice were each divided into 3 groups of 10 animals. The first

group did not receive any treatment, the second was treated with 100 µl of vehicle, and the third with 100 µl of RX-624 (2 mg/kg/injection). Times needed to find a submerged platform was measured (upper panel); \*  $p < 0.05$ . The swimming trajectories of animals were performed with EthoVision XT14.0 software (lower panel). Location of invisible platform indicated by squares. (d) A $\beta$ -GAPDH aggregation test. The hippocampi of two mice from each experimental group were isolated and subjected to ultrafiltration. The representative membranes were incubated with antibodies against A $\beta$  and GAPDH (upper panel). Quantitation was done using TotalLab Quant software (lower panels); \*  $p < 0.05$ .

## Supplementary Files

This is a list of supplementary files associated with this preprint. Click to download.

- [Additionalfile1.pdf](#)