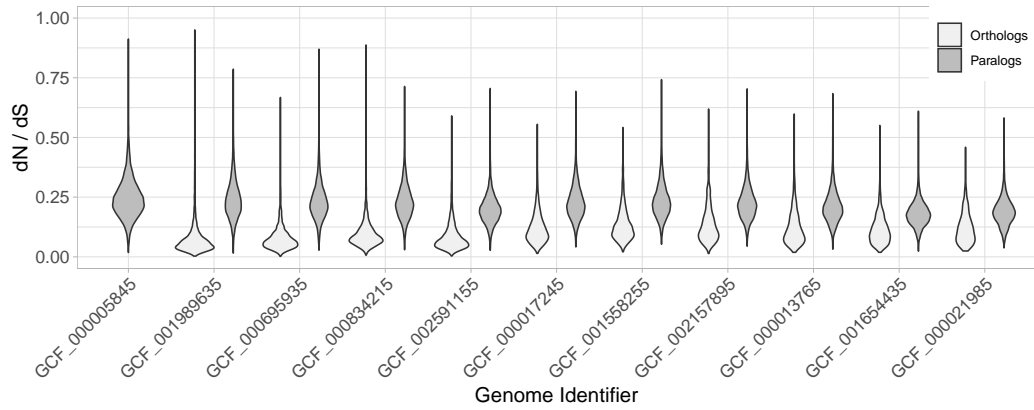
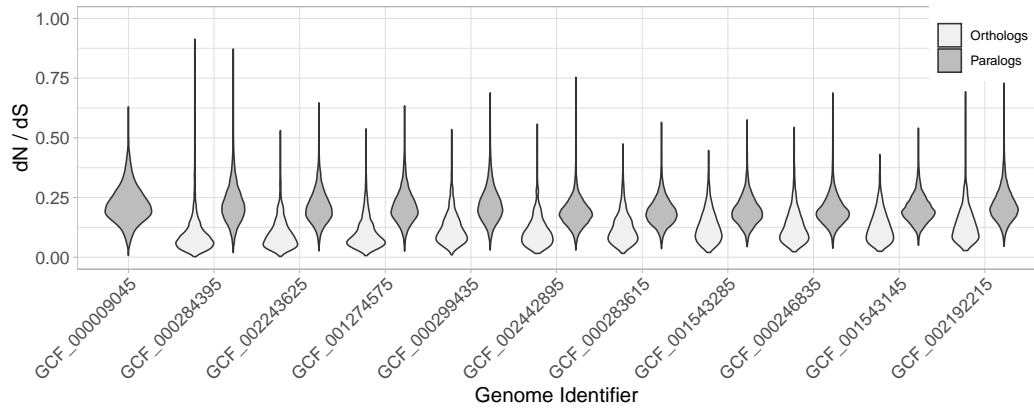


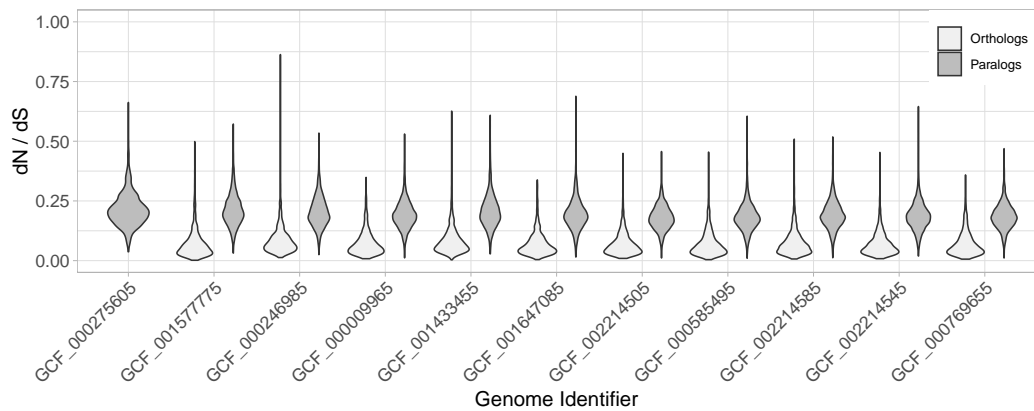
A *Escherichia coli* K12 MG1655 (GCF_000005845)



B *Bacillus subtilis* 168 (GCF_000009045)



C *Pyrococcus furiosus* COM1 (GCF_000275605)



S4 Fig. Full results on dN/dS ratios obtained Muse and Gaut's estimate of background codon frequencies [26]. The results still show orthologs to have lower dN/dS values than paralogs.