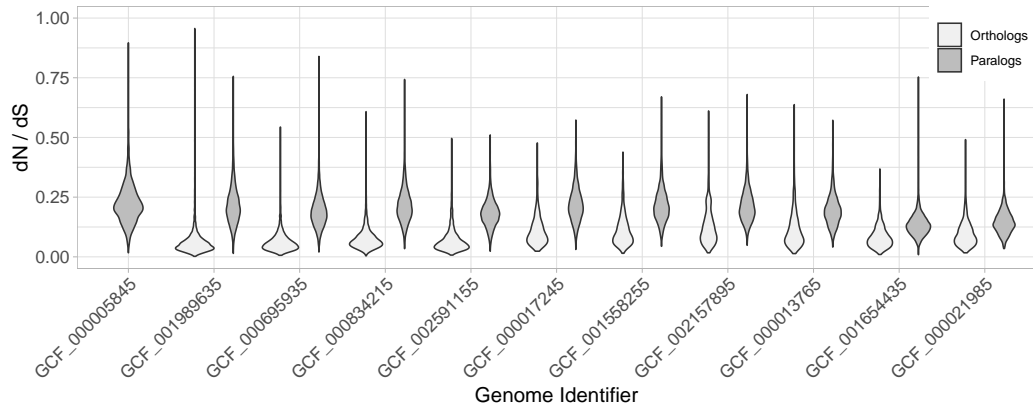
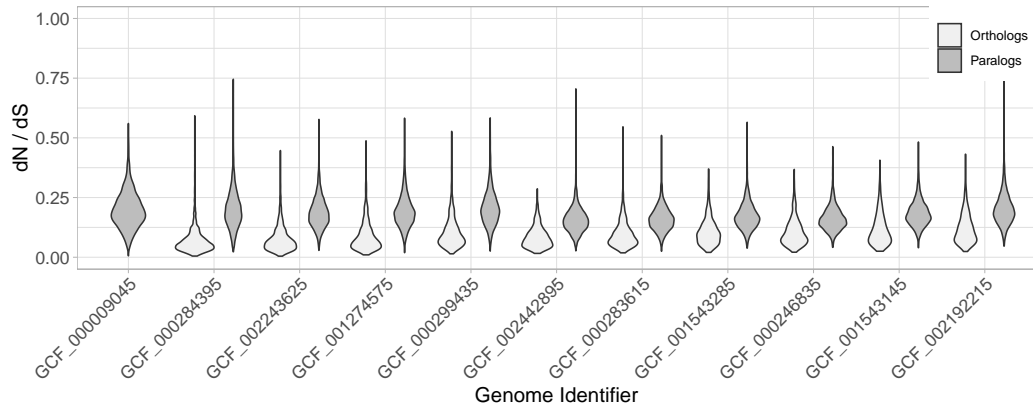


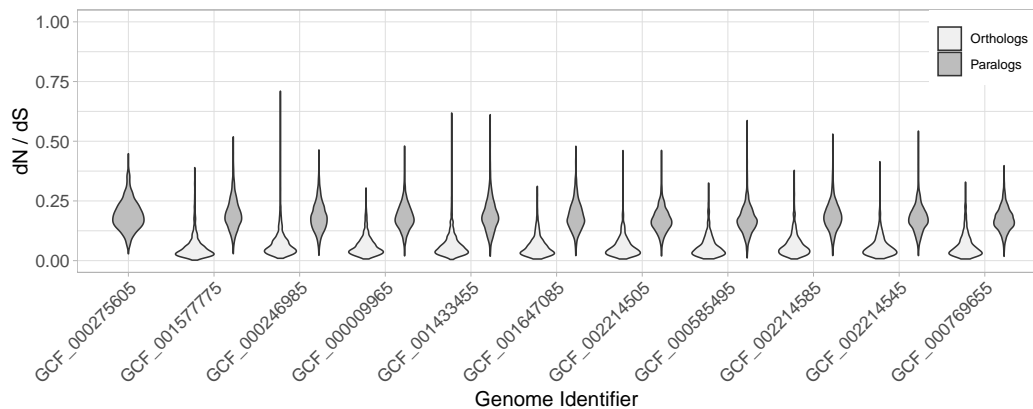
**A** *Escherichia coli* K12 MG1655 (GCF\_000005845)



**B** *Bacillus subtilis* 168 (GCF\_000009045)



**C** *Pyrococcus furiosus* COM1 (GCF\_000275605)



**S3 Fig. Full results on  $dN/dS$  ratios obtained with proteins within usual codon usage.** The Codon Adaptation Indexes [22] of the genes in the datasets had to be within the 15 and 85 percentile of the overall genomic CAI values. The results still show orthologs to have lower  $dN/dS$  values than paralogs.