

# Toll-Like Receptors in InflammAging at Ocular Surface.

**Antonio Zazzo**

University Campus Bio-Medico

**Maria Piano**

IRCCS–Fondazione Bietti

**Alessandra Micera** (✉ [alessandra.micera@fondazionebietti.it](mailto:alessandra.micera@fondazionebietti.it))

IRCCS–Fondazione Bietti

**Tommaso Mori**

University Campus Bio-Medico

**Marco Coassin**

University Campus Bio-Medico

---

## Research Article

**Keywords:** TLRs, InflammAging, Para-inflammation, Ageing, Ocular Surface.

**Posted Date:** May 11th, 2021

**DOI:** <https://doi.org/10.21203/rs.3.rs-492899/v1>

**License:** © ⓘ This work is licensed under a Creative Commons Attribution 4.0 International License.

[Read Full License](#)

---

**Toll-like Receptors in InflammAging at Ocular Surface.**

**Running title: InflammAging and Toll like receptors**

Antonio Di Zazzo<sup>1\*</sup>, Maria De Piano<sup>2</sup>, Alessandra Micera<sup>2\*</sup>, Tommaso Mori<sup>1</sup>, Marco Coassin<sup>1</sup>

<sup>1</sup> Ophthalmology Operative Complex Unit, University Campus Bio-Medico, Rome, Italy

<sup>2</sup> Research and Development laboratory for biochemical, molecular and cellular applications in ophthalmological sciences; IRCCS–Fondazione Bietti, Rome, Italy

**Disclosure:** A. Di Zazzo, None; M. De Piano, None; M. Coassin, None; T. Mori, None; A. Micera, None.

Word count: 2828

**\*Correspondence to:** Antonio Di Zazzo (a.dizazzo@unicampus.it) & Alessandra Micera (alessandra.micera@fondazionebietti.it)

29    **Abstract**

30

31    **Purpose:**

32    To evaluate changes in Toll Like Receptors expression at the ocular surface of healthy control volunteers  
33    within age.

34    **Methods:**

35    51 volunteers were enrolled in a pilot observational study. Clinical (OSDI questionnaire, Schirmer test and  
36    BUT) and Biomolecular (ICAM1, Goblet cells) biomarkers were assessed in all subjects. Temporal  
37    Conjunctival imprints were used for molecular analysis while nasal ones were harvested for epifluorescence  
38    microscopy.

39    **Results:**

40    Within the age in our sample OSDI score increases, T-BUT values decrease, and goblet cells showed a  
41    decreasing trend. Relative real time PCR detected up-regulation of TLR2 and down-regulation of TLR7, TLR8  
42    and MyD88 transcripts. Immunofluorescence data corroborated the PCR results reporting increased TLR2 and  
43    decreased TLR7 and TLR8 expression in elder population. A direct correlation was showed between increasing  
44    ICAM and increasing TLR2 changes with age.

45    **Conclusion:**

46    Changes in TLR expression are associated with aging, suggesting physiological role of TLRs in modulating  
47    innate and adaptive ocular surface immunity. TLRs age related changes may participate to the failure of ocular  
48    surface homeostatic mechanisms with inflammAging.

49

50    **Keywords:** TLRs, InflammAging, Para-inflammation, Ageing, Ocular Surface.

51

52

## 53    **Introduction**

54    Aging is a physiological process which leads to several structural and physiological changes. Particularly a  
55    dysregulation of the local innate and adaptive immune responses to environmental injuries has been proved.<sup>1</sup>  
56    A persistent subclinical low-grade inflammation has been demonstrated at ocular surface of elder self-  
57    considering “healthy” volunteers.<sup>2</sup> In those a dysregulation of para-inflammatory mechanisms, which keep  
58    tissue homeostasis against environmental injuries or insults, causes an ocular surface system failure, also  
59    defined InflammAging. Therefore ocular discomfort due to biomolecular impairments can seriously impact  
60    the quality of life of our older patients.<sup>2</sup>

61    Epithelial cells also respond to stressors by releasing several inflammatory mediators which may influence the  
62    local immune state and overall tissue equilibrium.<sup>2</sup> In fact, corneal and conjunctival epithelial cells express  
63    numerous immune related recognition receptors, including Toll-Like Receptor (TLR).<sup>3,4</sup> TLRs actively  
64    participate in immunological tutoring and innate defense responses at ocular surface.<sup>3</sup> Particularly TLR1,  
65    TLR2, TLR4, TLR5, TLR6 and TLR11, which are expressed on cell surfaces, recognize mainly microbial  
66    membrane components such as lipids, lipoproteins and proteins, while TLR3, TLR7, TLR8 and TLR9, which  
67    are expressed exclusively in intracellular vesicles, such as the endoplasmic reticulum (ER), endosomes,  
68    lysosomes and endo-lysosomes, mainly link nucleic acids.<sup>5</sup>

69    TLRs expression at epithelial and antigen presenting cells (APC) of the ocular surface seems to be relevant  
70    in driving innate/adaptive cross-talk of immune cells.<sup>3,4</sup> In fact Although TLRs are essential for protective  
71    immunity against infection, inappropriate TLRs responses contribute to acute and chronic inflammation, as  
72    well as to systemic autoimmune diseases. More importantly, evidence suggests their critical role in  
73    scavenging endogenous molecules produced by dying cells in normal or pathological conditions, usually  
74    leading a controlled and self-limited sterile inflammatory response.<sup>5</sup>

75    It has been also unveiled TLRs role in repairing damaged tissue beyond anti-microbial defense, as in the case  
76    of ischemia reperfusion injury.<sup>6</sup> In noninfectious inflammatory diseases such as atherosclerosis and  
77    Alzheimer’s disease, oxidized low-density lipoprotein and amyloid, respectively, trigger sterile  
78    inflammation.<sup>7</sup> The activation of TLR signaling during tissue damage suggests that endogenous molecules  
79    serve as TLR agonists for maintenance of homeostasis, such as tissue repair.<sup>5</sup> Therefore, TLRs may

80 participate in ocular surface immune homeostasis and their changes within the age might also modify ocular  
81 surface para-inflammatory equilibrium causing its age-related dysregulation, hence inflammAging.<sup>8</sup>  
82 Then, our aim in the present study was to evaluate age-related TLRs changes at the ocular surface of “healthy”  
83 volunteers, and its impact on tissue inflammAging.

84

## 85 **Materials and Methods**

86 Fifty-one consecutive volunteers were enrolled in an open observational pilot study between January 2018  
87 and July 2018. Volunteers were categorized into 3 groups according to age: young (22-40 years), middle-  
88 aged (41-60 years) and elder (61-85 years), as per previous study.<sup>2,9</sup> Eligible subjects were at least 18 years  
89 of age and described themselves as “healthy”. Exclusion criteria included history and/or signs/symptoms of  
90 ocular surface disease as well as contact lens use. Further exclusion criteria included systemic conditions  
91 (including cardiovascular, metabolic, neoplastic and psychiatric diseases) and pregnancy. In addition, all  
92 patients using any topical and/or systemic medications within the three-month period preceding the  
93 examination were excluded.

94 Patient recruitment was carried out at Ophthalmology Complex Operative Unit (University Campus Bio-  
95 Medico, Rome, Italy). All study procedures were performed in accordance with guidelines established by the  
96 Association for Research in Vision and Ophthalmology, reviewed and approved by the Intramural Ethical  
97 Committee(University Campus Bio-Medico, Rome, Italy), observing the tenets declaration of Helsinki. All  
98 participants provided a written informed consent to proceed for clinical and laboratory analysis.

99

### 100 *Clinical assessment*

101 Ocular surface examination included slit lamp assessment of ocular surface, Tear Break-Up Time (T-BUT),  
102 Schirmer Test Type 1, and administration of Ocular Surface Disease Index (OSDI) questionnaire to collect  
103 symptoms related to ocular surface irritation and/or discomfort, according to a standard procedure.<sup>10</sup>

104 OSDI is a 12-item validated questionnaire designed to provide a rapid assessment of symptoms related to  
105 ocular surface irritation and their impact on vision-related functioning in patients with dry eye disease (13-22  
106 mild, 23-32 moderate and over 33 severe).

107

108 *Conjunctival imprints*

109 Two imprints (impression cytology, ICs) from each bulbar conjunctiva (temporal and nasal ones) were sampled  
110 using a Millicell filter (0.22µm membrane; Millipore, Milan, Italy). ICs were quickly fixed (citofix, Bio-Fix  
111 spray; Bio-Optica, Milan, Italy), according to a standardized procedure.<sup>2</sup> One imprint was used for  
112 immunofluorescence and the other was processed for molecular analysis. All imprints were processed for  
113 simultaneous RNA and native protein collection, by using the MirvanaParis kit.

114 Plasticwares, analytical grade chemicals and other minor reagents were purchased from EuroClone (Milan,  
115 Italy), Sigma Aldrich (St. Louis, MO, USA), ICN Biomedicals (Milan, Italy) and Carlo Erba (Milan, Italy) or  
116 elsewhere described in detail.

117

118 *Relative real-time PCR: cDNA synthesis and specific amplification*

119 Total RNA was extracted from no-pooled ICs by using the Mirvana Paris extraction procedure (Ambion Ltd.,  
120 Huntingdon, Cambridgeshire, UK), according to the manufacturers' suggestion with minor modifications.  
121 Total RNA was resuspended in 15µL autoclaved Diethyl pyrocarbonate (DEPC)-treated RNase free MilliQ  
122 water (Direct Q5, Millipore Corporation, Billerica, MA, USA). To eliminate any DNA contamination, total  
123 RNA samples were treated with RNase-free DNaseI, according to the supplier's protocol (2U/µLDNase;  
124 Turbo DNA free kit; Ambion Ltd., Huntingdon, Cambridge-shire, UK). Total RNA samples were checked for  
125 A280 analysis (RNA purity >1.8; SPECTROstar Nano; BMG LABTECH GmbH, Allmendgrün, Ortenberg)  
126 and verified for no DNA contaminants. Equivalent RNA amounts (500ng) were used as template to generate  
127 cDNAs in a one-cycler programmable thermocycler (LifePRO/BIOER; Euroclone, Milan, Italy), according to  
128 the GoScript™ Reverse Transcription procedure with minor modifications (Promega, Madison, Wisconsin  
129 USA). cDNAs were amplified by using the SYBRgreen Hot start PCR Master Mix (Hydra; Biocell, Rome,  
130 Italy) in the presence of specific primer pairs (see Table 1). Both Forward (F) and reverse (R) primers (possibly  
131 one intron-spanning) used for amplifications were previously designed according to a standard procedure by  
132 using the Primer3 software (freely available) and produced by Eurofins Genomics (10pM; Biotech, Ebersberg,  
133 Germany) and validate also in these studies. Real-time PCR amplification was carried out in 48-well  
134 microplates (Eco™ Illumina; San Diego, CA) amplification profile reported in Table 1. Samples were  
135 amplified in triplicate and single cycle threshold (Ct) values were recorded during linear amplification and

136 normalized to those of referring genes run in parallel ( $nCt = Ct_{\text{target}} - Ct_{\text{referring}}$ ), according to a standard  
137 procedure (normalized  $\Delta Cts \pm SD$ ).<sup>11,12</sup> Averages were calculated from replicates and expressed as normalized  
138 Ct or as expression ratio of a normalized target with respect to referring gene expression (absolute fold  
139 changes), according to the  $\Delta\Delta Ct$  and  $2^{-\Delta\Delta Ct}$  (REST384–2006 software) analysis.<sup>13</sup> Single melting curves  
140 were verified by monitoring the amplification at the end of run. Randomly, PCR products (100-300bps) were  
141 tested for single-band amplification in a 2.5% agarose gel. Gels were acquired by computerized UVP BioDoc  
142 imaging workstation (UVP, LLC, Upland, CA, UK) in the presence of FluoVis (2mg/ml stock solution;  
143 10 $\mu$ l/small agarose gel) as a nucleic acid intercalant (Smobio).

144

#### 145 *Immunofluorescence and epifluorescent microscopy*

146 Cytofixed ICs were processed for immunofluorescence according to a standard procedure. A brief  
147 blocking/permeabilizing step was carried out for 20 minutes (0.8% bovine serum albumin–0.3% Triton X100  
148 phosphate-buffered saline) before addition of primary antibodies: goat polyclonal anti-TLR2 (sc-8689; 1  
149  $\mu$ g/ml), rabbit polyclonal anti-TLR3 (sc-10740; 1  $\mu$ g/ml), rabbit polyclonal anti-TLR4 (sc-10741; 1  $\mu$ g/ml),  
150 goat polyclonal anti-TLR5 antibodies (sc-8695; 1  $\mu$ g/ml), goat polyclonal anti-TLR7 (sc-13208; 1  $\mu$ g/ml), or  
151 goat polyclonal anti-TLR9 (sc-16247; 1  $\mu$ g/ml) antibodies, all from Santa Cruz Biotech (Santa Cruz, CA).  
152 Specific binding of primary antibody was detected by using cy2-conjugated species specific secondary  
153 antibodies (1:300; Jackson ImmunoResearch, West Grove, PA). Nuclear staining was performed with 4', 6-  
154 Diamidino-2-phenylindole (DAPI; 5 $\mu$ g/mL solution; Molecular Probes, Invitrogen, Milan, Italy) in PBS  
155 supplemented with 20 $\mu$ g/mL RNase (Molecular Probes), to reduce non-specific signal due to  
156 cytoplasm/nucleoli RNA background and to improve the quality of nuclear acquisition. Images were acquired  
157 using direct Ni direct Eclipse microscope equipped with the DS-Ri1 digital camera (Nikon) and the NIS  
158 Elements Imaging Software (Nikon, Tokyo, Japan). Plan fluor X20/0.50 and X40/0.75 objectives, and plan  
159 Apo X60/1.40 objective were used for acquisition (Nikon). Isotype-matched IgG antibodies (Vector Labs.  
160 Ltd., Burlingame, CA) were incubated in parallel and used as internal controls (background subtraction).

161

#### 162 *Statistical analysis*

163 Data values are expressed as the mean  $\pm$  SD (in the text) and mean  $\pm$  SEM (in the graphics). The statistical

164 package used was StatView II for PC (Abacus Concepts. Inc., Barkley, CA, USA). Differences between groups  
165 were assessed with ANOVA followed by a Tukey-Kramer post hoc analysis. Correlations between two  
166 variables were evaluated by Pearson's correlation coefficient analysis.  $P \leq 0.05$  was selected as the limit of  
167 statistical significance.

168

## 169 **Results**

170 Clinical assessments revealed OSDI scores (young:  $7.65 \pm 0.71$  score; middle age:  $12.54 \pm 0.71$  score; old:  
171  $17.40 \pm 0.85$  score;  $p < 0.05$ ) significantly increased with ageing and correlated negatively with Goblet cells  
172 number ( $R = -0.8393$ ,  $p < 0.0006$ ). By contrary, BUT values decreased with ageing (young:  $11.50 \pm 1.81$  sec;  
173 middle age:  $8.75 \pm 1.50$  sec; old:  $8.17 \pm 2.50$  sec;  $p < 0.001$ ) and positively correlated with Goblet cells number  
174 ( $\rho = 0.3529$ ,  $p > 0.05$ ). Schirmer test decreased with aging (young:  $20.07 \pm 0.74$  mm; middle age:  $17.85 \pm 1.34$   
175 mm; old:  $14.65 \pm 0.92$  mm,  $p < 0.05$ ). Demographics are reported in table 2.

176 TLR-2 immunoreactivity increased significantly with aging (young:  $39.96 \pm 2.08$  IntDen; middle age:  
177  $62.76 \pm 0.03$  IntDen; old:  $69.44 \pm 1.43$  IntDen) (Fig 1-A).

178 TLR4 immunoreactivity showed a significant increase at middle age ( $67.78 \pm 9.37$  IntDen) (Fig. 1-B) as well  
179 as TLR-9 (middle age:  $35.98 \pm 2.93$  IntDen, old:  $27.58 \pm 1.00$  IntDen compared to young  $25.31 \pm 0.46$  IntDen)  
180 (Fig. 1-C) and TLR7 (middle age:  $53.53 \pm 0.02$  IntDen, old:  $43.14 \pm 2.40$  IntDen, young:  $34.36 \pm 1.88$  IntDen) (Fig  
181 1-E) but all there decreased in elder population (Fig. 1-B,C,E); TLR5 values were similar in all groups.

182 A decreasing reactivity was observed for TLR3 (young:  $73.61 \pm 1.28$  IntDen, middle age  $62.34 \pm 5.78$  IntDen,  
183 old:  $56.25 \pm 5.45$  IntDen) (Fig. 1-C,D)

184 Molecular analysis revealed a significant downregulation of TLR4 ( $-2.55 \pm 0.09$  2log-fold changes;  $p < 0.05$ ) and  
185 a trend of reduction of MyD88 ( $-2.83 \pm 0.05$  2log-fold changes). Upregulation of TLR2 ( $4.65 \pm 2.05$  2log-fold  
186 changes,  $p < 0.05$ ) in old population compared to young was also evaluated. TLR7 ( $-4.76 \pm 0.01$  2log-fold  
187 changes,  $p < 0.05$ ) and TLR8 ( $-4.61 \pm 0.01$  2log-fold changes,  $p < 0.05$ ) transcripts were significantly  
188 downregulated in elder population (Fig.2-A, B). Not significant changes were observed for TLR5, TLR3 (Fig.  
189 2-A, B). An overall increase of cell surface TLRs and a decrease of intracellular ones with ageing was also  
190 detected significantly (Fig 3). A direct correlation was showed between increasing ICAM-1 and increasing  
191 TLR2 changes within the age. (Fig. 4)



## 192 Discussion

193 TLRs at ocular surface epithelial cells of healthy volunteers changed with the age. Increased expression of  
194 cell-surface TLRs with downregulation of cytoplasmatic TLRs was detected. Increasing TLR2 and reducing  
195 TLR3 and 7 expression was strictly correlated with increasing age-related expression of I-CAM 1, then  
196 aspecific sterile inflammation.

197 Clinical (T-BUT, Schirmer Test Type 1, and OSDI) and biomolecular (ICAM1 and goblet Cells) biomarkers  
198 unveiled an unperceived inflammAging status in our self-considered healthy volunteers.<sup>2</sup> Such clinical and  
199 biomolecular changes were significantly correlated to increased TLR2, and reduced TLR7-8 in elder  
200 population, unveiling a role of TLRs in ocular surface homeostasis, and not only in microbial defense.<sup>14</sup>  
201 Such “aging patterns” would cause alteration of both innate and adaptive immunity.<sup>2</sup> Age- related alteration  
202 of TLRs local expression may be a preclinical and/or subclinical condition that determine the failure of the  
203 para-inflammatory compensatory mechanisms to adequately restore ocular surface homeostasis leading to the  
204 ocular surface disease.<sup>5,8,14–18</sup>

205 The Toll-like receptors (TLRs) are primary components of the innate immune system involved in signal  
206 transduction and are expressed by entire “healthy” ocular surface, allowing a prompt innate response to  
207 pathogenic strains that might trigger local inflammation.<sup>18</sup> The human ocular surface is colonized by an  
208 expansive varied microbial community, as evidenced by previous researches, in equilibrium state.<sup>8,14–22</sup> TLRs  
209 are taking part in controlling such homeostatic balance at the ocular surface, bridging the gap between  
210 microbial flora and ocular surface.

211 However, they are part of family of membrane-bound pattern recognition receptors (PRRs) located either on  
212 the cell surface or in endosomal compartments. These receptors are known to respond to host-molecules  
213 termed damage-associated molecular patterns (DAMPs) that have taken on the appearance of “non-self.”  
214 Sterile inflammation occurs in response to a growing list of DAMPs ranging from oxidized lipids or  
215 lipoproteins, to deposits of protein/lipid aggregates or particulate matter.<sup>23</sup>

216 The eye normally exhibits “immune and angiogenic privilege” to avoid the potential sight destroying  
217 consequences of ocular inflammation.<sup>24</sup> Such privilege involves anatomical, cellular, and soluble factors, as  
218 well as TLRs, ensuring homeostatic equilibrium.<sup>25</sup> Despite these mechanisms to prevent potentially harmful

219 ocular inflammation, such a state of immune privilege can break down, resulting in a dysregulated sterile  
220 inflammatory status.<sup>26</sup>

221 This sterile inflammation does not show signs of acute inflammation; rather it appears to be low-grade and  
222 chronic. Sterile inflammation occurs in response to a growing list of modified host-derived elements ranging  
223 from oxidized lipids or lipoproteins to deposits of protein/lipid aggregates or particulate matter.<sup>23</sup> These  
224 stimuli trigger activation of pattern recognition receptors (PRRs) of the innate immune system.<sup>27</sup>

225 In fact frequently these stimuli are often easily cleared, leading to a self-limiting and controlled homeostatic  
226 para-inflammation. But, once such system is dysregulated, the inflammatory response can persist causing  
227 over-activation of the immune system and contributing to disease pathogenesis.<sup>2,28</sup>

228 In fact, as in our data<sup>2</sup>, with progressive age, increased oxidative damage occurs in many other tissues,  
229 including the retina, and is thought to contribute to the progression of multiple forms of retinal degeneration  
230 most notably AMD.<sup>28</sup>

231 TLR2 has an alert sentinel function and is the main recruitment/phagocytic receptor for innate cells in case of  
232 bacterial infection<sup>29</sup>, and it is also involved in promoting angiogenesis during wound healing.<sup>30,31</sup>

233 Excessive ROS can damage lipids through a mechanism known<sup>28</sup> and conceivably induce activation of TLR2  
234 in AMD and in other retinal diseases where ROS play a role in pathology TLR2 inhibition provides striking  
235 protection to the retina in response to oxidative stress. We show that oxidative stress activates.<sup>28</sup> TLR2  
236 mediates complement deposition in response to oxidative stress that is pathological in nature, and that  
237 blocking TLR2 signaling preserves cells integrity in vivo under conditions of acute oxidative stress.<sup>28</sup>

238 TLR2-activated mononuclear phagocytes by oxidative damage-induced TLR2-mediated C3/MAC  
239 activation.<sup>28</sup>

240 TLR2 ligand on endothelial cells inducing angiogenesis in a VEGF-dependent manner.<sup>31,32</sup>

241 Therefore with ageing, as shown in our data the absolute and relative increase of TLR2 is directly related to  
242 increasing ICAM expression and inflammation, suggesting a dysregulation in TLRs activity. Such TLRs  
243 unbalance may be contributing cause of the altered homeostatic mechanisms occurred with ageing.

244 Healthy corneal epithelium usually do not express TLR2 at the cell surface, failing to elicit immune response  
245 to ligands (TLR silent form)<sup>33</sup>, but expresses high levels of TLR9, compared with the average expression of  
246 TLR-2, whereas the expression by the underside stroma is at similar levels.<sup>34</sup> Therefore the overexpression of

247 cytoplasmatic TLRs may create an immunosilent condition to prevent unnecessary inflammatory responses.<sup>33</sup>  
248 A relative reduction of cytoplasmatic TLR7/8 and TLR9, in old subjects may trigger the activation of the  
249 innate as well as adaptive immune response.<sup>35-37</sup>  
250 In fact, although still controversial and debated, several evidences describe the immunomodulating activity  
251 of cytoplasmatic TLRs, such as TLR7, 8, 9 and 3, underlining their role in inducing immunotolerance.<sup>38-42</sup>  
252 Therefore, an increased expression of TLR2 and a relative decrease of cytoplasmatic TLRs compared to  
253 younger population may expose elder population to inflammAging.  
254 However few limitations characterize this study on healthy volunteers: (1) the small number of subjects  
255 enrolled and (2) the unfeasibility to perform a complete analysis of TLR protein expression.

256

## 257 **Conclusions**

258 Aging has been associated with several ocular dysfunctions and degenerations such as (1) ocular surface failure  
259 which may worsen in in dry eye disease and post-surgery discomfort syndrome, (2) Age related macular  
260 degeneration. Both conditions are related to a loss of homeostatic mechanisms, and dysregulated  
261 parainflammation leading to a tissue failure and sterile subclinical persistent inflammation. InflammAging at  
262 ocular surface may be partially caused by a TLRs expression and signaling unbalance. Age related variations  
263 in TLR expression in apparently healthy volunteers may influence local immune surveillance and para-  
264 inflammatory homeostatic response. These new insights unveil the complexity of the inflammAging but also  
265 the critical role of TLRs in immune surveillance, and in regulating the innate and adaptive immune response,  
266 hence preventing autoimmunity, at ocular surface.

267

268

269

270

271

272

273

274

275    **Acknowledgements**

276    The project was partially funded by the Italian Ministry of Health (MDP and AM). MDP and AM thank  
277    Fondazione Roma for continuous support.

278

279    **AU contribution declaration:**

280    -Design and conduction of the study (ADZ, AM)

281    -collection, management, analysis and interpretation of the data (all)

282    -preparation (ADZ, AM, MDP), reviewing (MC, TM), approval (all) of the manuscript

283

## 284 Bibliography

- 285
- 286 1. Dorshkind K, Montecino-Rodriguez E, Signer RAJ. The ageing immune system: Is it ever too old to
- 287 become young again? *Nat Rev Immunol.* 2009;9(1):57-62. doi:10.1038/nri2471
- 288 2. Di Zazzo A, Micera A, Coassin M, et al. InflammAging at Ocular Surface: Clinical and Biomolecular
- 289 Analyses in Healthy Volunteers. *Invest Ophthalmol Vis Sci.* 2019;60(5):1769-1775.
- 290 doi:10.1167/iovs.18-25822
- 291 3. Micera A, Stampachiacchiere B, Aronni S, Seripiao dos Santos M, Lambiase A. Toll-like receptors
- 292 and the eye. *Curr Opin Allergy Clin Immunol.* 2005;5:451-458. doi:10.1167/iovs.05-0956
- 293 4. Micera A, Jirsova K, Normando EM, et al. Molecular and biochemical expression of TLRs in human
- 294 amniotic membrane: A comparative study of fresh and cryopreserved specimens. *Graefes Arch Clin*
- 295 *Exp Ophthalmol.* 2014;252(2):267-274. doi:10.1007/s00417-013-2540-z
- 296 5. Kawai T, Akira S. The role of pattern-recognition receptors in innate immunity: Update on toll-like
- 297 receptors. *Nat Immunol.* 2010;11(5):373-384. doi:10.1038/ni.1863
- 298 6. O'Neill LAJ, Golenbock D, Bowie AG. The history of Toll-like receptors-redefining innate
- 299 immunity. *Nat Rev Immunol.* 2013;13(6):453-460. doi:10.1038/nri3446
- 300 7. Stewart CR, Stuart LM, Wilkinson K, et al. CD36 ligands promote sterile inflammation through
- 301 assembly of a Toll-like receptor 4 and 6 heterodimer. *Nat Immunol.* 2010;11(2):155-161.
- 302 doi:10.1038/ni.1836
- 303 8. Wen X, Miao L, Deng Y, et al. The influence of age and sex on ocular surface microbiota in healthy
- 304 adults. *Investig Ophthalmol Vis Sci.* 2017;58(14):6030-6037. doi:10.1167/iovs.17-22957
- 305 9. Micera A, Di Zazzo A, Esposito G, et al. Age-Related Changes to Human Tear Composition. *Investig*
- 306 *Ophthalmology Vis Sci.* 2018;59(5):2024. doi:10.1167/iovs.17-23358
- 307 10. Schiffman RM, Christianson MD, Jacobsen G, Hirsch JD, Reis BL. Reliability and validity of the
- 308 ocular surface disease index. *Arch Ophthalmol.* 2000;118(5):615-621.
- 309 doi:10.1001/archophth.118.5.615
- 310 11. Pfaffl MW. A new mathematical model for relative quantification in real-time RT-PCR. *Nucleic*
- 311 *Acids Res.* 2001;29(9):e45. doi:10.1093/nar/29.9.e45
- 312 12. Cohen J. *Statistical Power Analysis for the Behavioral Sciences.*; 2013. doi:10.4324/9780203771587
- 313 13. Micera A, Stampachiacchiere B, Di Zazzo A, et al. NGF modulates trkANGFR/p75NTR in  $\alpha$ MA-
- 314 expressing conjunctival fibroblasts from human ocular cicatricial pemphigoid (OCP). *PLoS One.*
- 315 2015;10(11):1-15. doi:10.1371/journal.pone.0142737
- 316 14. Dong Q, Brulc JM, Iovieno A, et al. Diversity of bacteria at healthy human conjunctiva. *Investig*
- 317 *Ophthalmol Vis Sci.* 2011;52(8):5408-5413. doi:10.1167/iovs.10-6939
- 318 15. Ozkan J, Nielsen S, Diez-Vives C, Coroneo M, Thomas T, Willcox M. Temporal Stability and
- 319 Composition of the Ocular Surface Microbiome. *Sci Rep.* 2017;7(1):1-11. doi:10.1038/s41598-017-
- 320 10494-9
- 321 16. Zhou Y, Holland MJ, Makalo P, et al. The conjunctival microbiome in health and trachomatous
- 322 disease: A case control study. *Genome Med.* 2014;6:1-10. doi:10.1186/s13073-014-0099-x
- 323 17. Shin H, Price K, Albert L, Dodick J, Park L, Dominguez-Bello MG. Changes in the eye microbiota
- 324 associated with contact lens wearing. *MBio.* 2016;7(2):1-6. doi:10.1128/mBio.00198-16
- 325 18. Zegans ME, Van Gelder RN. Considerations in understanding the ocular surface microbiome. *Am J*
- 326 *Ophthalmol.* 2014;158(3):420-422. doi:10.1016/j.ajo.2014.06.014
- 327 19. Doan T, Akileswaran L, Andersen D, et al. Paucibacterial microbiome and resident DNA virome of
- 328 the healthy conjunctiva. *Investig Ophthalmol Vis Sci.* 2016;57(13):5116-5126. doi:10.1167/iovs.16-
- 329 19803
- 330 20. Kugadas A, Christiansen SH, Sankaranarayanan S, et al. Impact of Microbiota on Resistance to
- 331 Ocular *Pseudomonas aeruginosa*-Induced Keratitis. *PLoS Pathog.* 2016;12(9):1-24.
- 332 doi:10.1371/journal.ppat.1005855
- 333 21. Kugadas A, Wright Q, Geddes-McAlister J, Gadjeva M. Role of microbiota in strengthening ocular
- 334 mucosal barrier function through secretory IgA. *Investig Ophthalmol Vis Sci.* 2017;58(11):4593-
- 335 4600. doi:10.1167/iovs.17-22119
- 336 22. Lu LJ, Liu J. Human microbiota and ophthalmic disease. *Yale J Biol Med.* 2016;89(3):325-330.
- 337 23. Rock KL, Latz E, Ontiveros F, Kono H. The sterile inflammatory response. *Annu Rev Immunol.*
- 338 2010;28:321-342. doi:10.1146/annurev-immunol-030409-101311
- 339 24. Di Zazzo A, Gaudenzi D, Yin J, et al. Corneal angiogenic privilege and its failure. *Exp Eye Res.*

2021;204:108457. doi:10.1016/j.exer.2021.108457

25. Streilein JW, Stein-Streilein J. *Does Innate Immune Privilege Exist?* Vol 67.; 2000. doi:10.1002/jlb.67.4.479

26. Chang JH, McCluskey PJ, Wakefield D. Toll-like receptors in ocular immunity and the immunopathogenesis of inflammatory eye disease. *Br J Ophthalmol.* 2006;90(1):103-108. doi:10.1136/bjo.2005.072686

27. Mulfaul K, Rhatigan M, Doyle S. Toll-like receptors and age-related macular degeneration. *Adv Exp Med Biol.* 2018;1074:19-28. doi:10.1007/978-3-319-75402-4\_3

28. Mulfaul K, Ozaki E, Fernando N, et al. Toll-like Receptor 2 Facilitates Oxidative Damage-Induced Retinal Degeneration. *Cell Rep.* 2020;30(7):2209-2224.e5. doi:10.1016/j.celrep.2020.01.064

29. Fournier B. The function of TLR2 during staphylococcal diseases. *Front Cell Infect Microbiol.* 2013;4(JAN):1-8. doi:10.3389/fcimb.2012.00167

30. Wang H, Guo J, West XZ, et al. Detection and biological activities of carboxyethylpyrrole ethanolamine phospholipids (CEP-EPs). *Chem Res Toxicol.* 2014;27(12):2015-2022. doi:10.1021/tx500216a

31. West XZ, Malinin NL, Merkulova AA, et al. Oxidative stress induces angiogenesis by activating TLR2 with novel endogenous ligands. *Nature.* 2010;467(7318):972-976. doi:10.1038/nature09421

32. Doyle SL, Campbell M, Ozaki E, et al. NLRP3 has a protective role in age-related macular degeneration through the induction of IL-18 by drusen components. *Nat Med.* 2012;18(5):791-798. doi:10.1038/nm.2717

33. Ueta M, Nochi T, Jang M-H, et al. Intracellularly Expressed TLR2s and TLR4s Contribution to an Immunosilent Environment at the Ocular Mucosal Epithelium. *J Immunol.* 2004;173(5):3337-3347. doi:10.4049/jimmunol.173.5.3337

34. Bonini S, Micera A, Iovieno A, Lambiase A, Bonini S. Expression of toll-like receptors in healthy and allergic conjunctiva. *Ophthalmology.* 2005;112(9):1528.e1-1528.e8. doi:10.1016/j.ophtha.2005.04.009

35. Iwasaki A, Medzhitov R. Toll-like receptor control of the adaptive immune responses. *Nat Immunol.* 2004;5(10):987-995. doi:10.1038/ni1112

36. Mazzoni A, Segal DM. Controlling the Toll road to dendritic cell polarization. *J Leukoc Biol.* 2004;75(5):721-730. doi:10.1189/jlb.1003482

37. Spörri R, Reis e Sousa C. Inflammatory mediators are insufficient for full dendritic cell activation and promote expansion of CD4+ T cell populations lacking helper function. *Nat Immunol.* 2005;6(2):163-170. doi:10.1038/ni1162

38. Michaelis KA, Norgard MA, Levasseur PR, et al. Persistent Toll-like receptor 7 stimulation induces behavioral and molecular innate immune tolerance. *Brain Behav Immun.* 2019;82:338-353. doi:10.1016/j.bbi.2019.09.004

39. Berggren O, Pucholt P, Amcoff C, Rönnblom L, Eloranta ML. Activation of plasmacytoid dendritic cells and B cells with two structurally different Toll-like receptor 7 agonists. *Scand J Immunol.* 2020;91(6). doi:10.1111/sji.12880

40. Rohani MG, Dimitrova E, Beppu A, Wang Y, Jefferies CA, Parks WC. Macrophage MMP10 Regulates TLR7-Mediated Tolerance. *Front Immunol.* 2018;9:2817. doi:10.3389/fimmu.2018.02817

41. Rashedi I, Gómez-Aristizábal A, Wang XH, Viswanathan S, Keating A. TLR3 or TLR4 Activation Enhances Mesenchymal Stromal Cell-Mediated Treg Induction via Notch Signaling. *Stem Cells.* 2017;35(1):265-275. doi:10.1002/stem.2485

42. Qiu Y, Guo J, Mao R, et al. TLR3 preconditioning enhances the therapeutic efficacy of umbilical cord mesenchymal stem cells in TNBS-induced colitis via the TLR3-Jagged-1-Notch-1 pathway. *Mucosal Immunol.* 2017;10(3):727-742. doi:10.1038/mi.2016.78

389 **Figure legend**

390

391 **Table 1. Primer description.**

392

<i>Genes</i>	<i>Primer pairs (F/R)</i>	<i>Annealing temp. °C</i>
<i>Referring genes</i>		
<i>H3</i>	F: 5'-ACT CAT CAC CGT AGC CAG GT-3' R: 5'-CAC CTT GGC TTG AGC ACT C-3'	60°C
<i>18S</i>	F: 5'-GGA GAG GGA GCC TGA GAA C-3' R: 5'-AGG GCC TCG AAA GAG TCC T-3'	58°C
<i>Target genes</i>		
<i>TLR-1</i>	F: 5'-TTC ACA GTG TCT GGT ACA CGC AT-3' R: 5'-ACC GTG TCT GTT AAG AGA TTA TTG GA-3'	58°C
<i>TLR-2</i>	F: 5'-AGT GAG CGG GAT GCC TAC T-3' R: 5'-GAC TTT ATC GCA GT CTC AGA TTT AC-3'	60°C
<i>TLR-3</i>	F: 5'- GCC GCC AAC TTC ACA AGG TAT A-3' R: 5'- AGC TCA TTG TGC TGG AGG TT -3'	58°C
<i>TLR-4</i>	F: 5'-AAT CCC CTG AGG CAT TTA GG-3' R: 5'-CAG GGC TAA ACT CTG GAT GG -3'	58°C
<i>TLR-5</i>	F: 5'-CCA TAG ATT TTT CCT CCA ACC AAA TA-3' R: 5'-TCA TAC ATT TTC CCC AGT CCA CT-3'	58°C
<i>TLR-6</i>	F: 5'-CAT CCT ATT GTG AGT TTC AGG CAT-3' R: 5'-GCT TCA TAG CAC TCA AC CCA AG-3'	59°C
<i>TLR-7</i>	F: 5'-GGA GGT ATT CCC ACG AAC ACC-3' R: 5'-TGA CCC CAG TGG AAT AGG TAC AC-3'	60°C
<i>TLR-8</i>	F: 5'- AAA CTT GAC CCA ACT TCG ATA CCT AA-3' R: 5'-GAT CCA GCA CCT TCA GAT GAG G-3'	60°C
<i>TLR-9</i>	F: 5'-TTC ATG GAC GGC AAC TGT TA-3' R: 5'-GAG TGA CAG GTG GGT GAG GT-3'	58°C
<i>TLR-10</i>	F: 5'-AAG AAA GGT TCC CGC AGA CTT-3' R: 5'-TGT TAT GGC ATA GAA TCA AAA CTC TCA-3'	58°C
Abbreviations: TLR, Toll-like Receptor; H3, Histon 3; 18S, 18S ribosomal RNA Details in primer design/synthesis and amplification set are shown in the text (M&M).		

393

394

395 **Table 2. Demographics.**

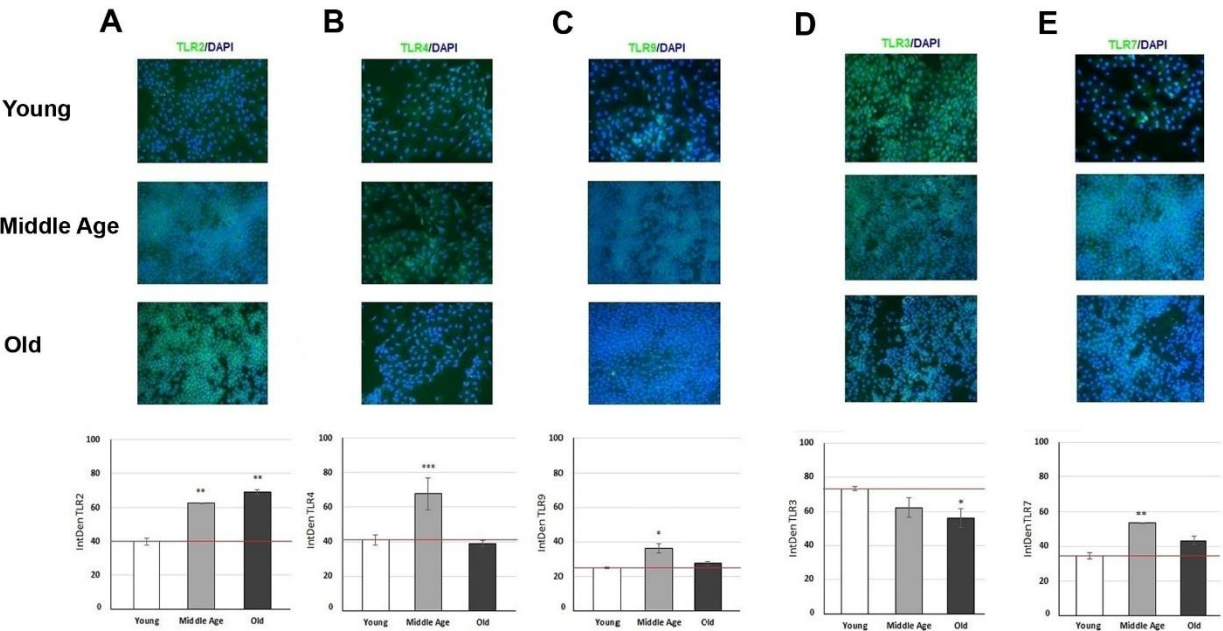
<i>Groups</i>	<i>N°</i>	<i>Age</i>	<i>Age ± SD</i>	<i>Sex</i>
<i>Population</i>	51	22-85	49.57 ± 3.76	27F/24M
<i>Young</i>	18	22-40	25.32 ± 1.17	10F/8M
<i>Middle-aged</i>	16	41-60	49.87 ± 5.31	6F/10M
<i>Old</i>	17	61-85	73.47 ± 8.68	11F/6M

396

397

398 **Figure 1. immunoreactivity in conjunctival imprints**

399 Epifluorescence acquisitions (overlays; x200) of TLR immunolabeled (green/cy2) imprints over a blue nuclear  
400 counterstaining (dapi/blue). Representative merge panels showing the specific TLR2 (A), TLR4 (B) and TLR9  
401 (C) TLR3 (D), TLR7 (E) immunoreactivity, respectively in young (upper), middle age (middle) and old (lower)  
402 groups. As shown, an increase of TLR2 was observed by aging. A significant increase of TLR4 was observed  
403 in middle age imprints. Histograms are IntDen values according to the ImageJ analysis, after channel split and  
404 background normalization. Red line indicates the young expression and \* pointed at p<0.05 significant level.



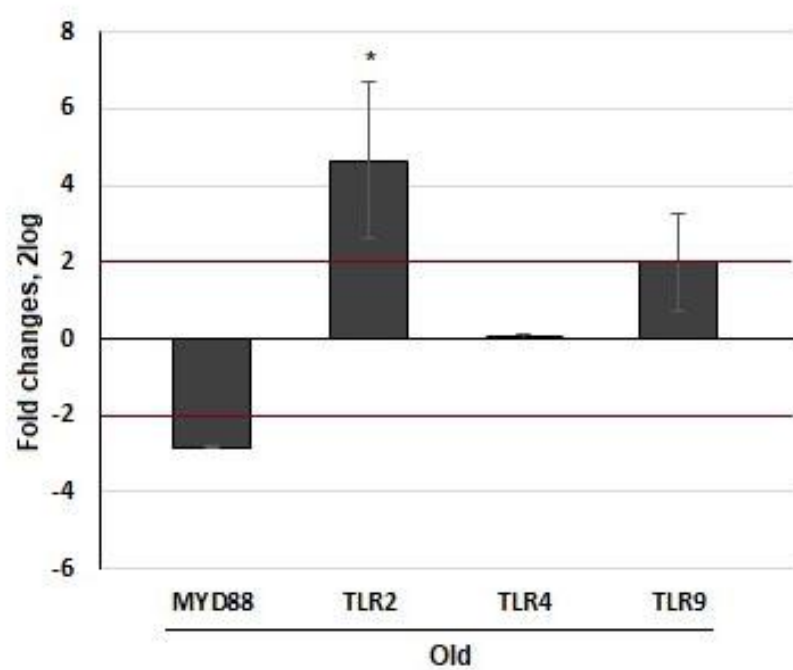
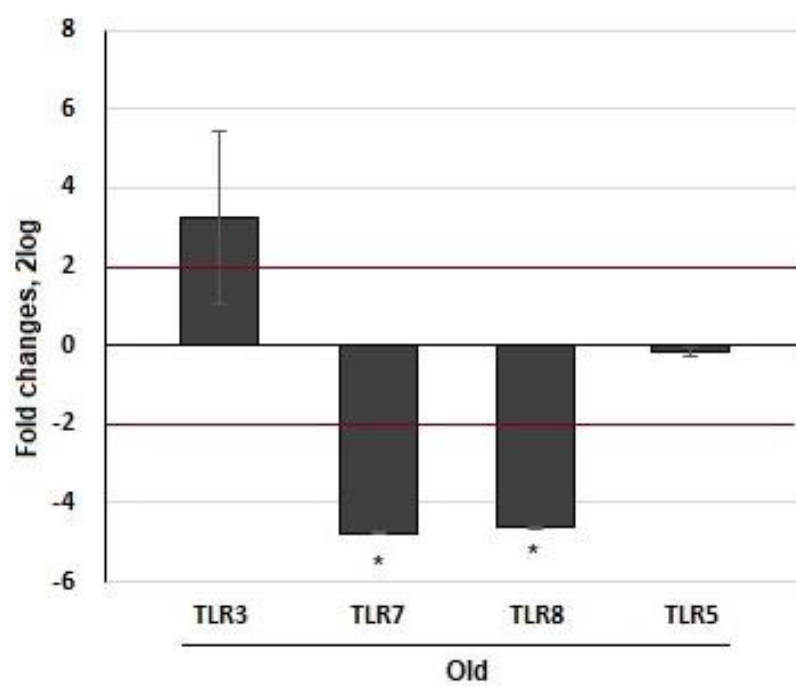
405

406

407 **Figure 2 Changes in TLRs transcript expression at aging.**



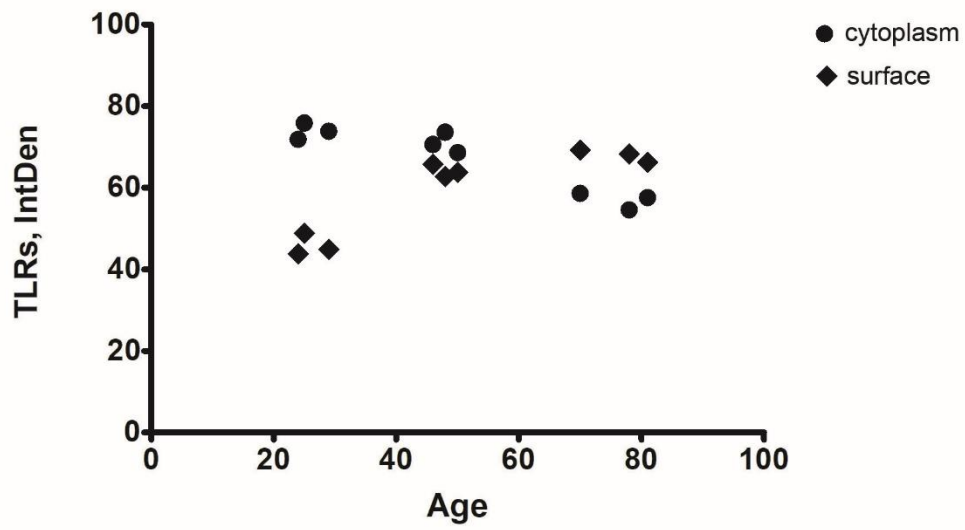
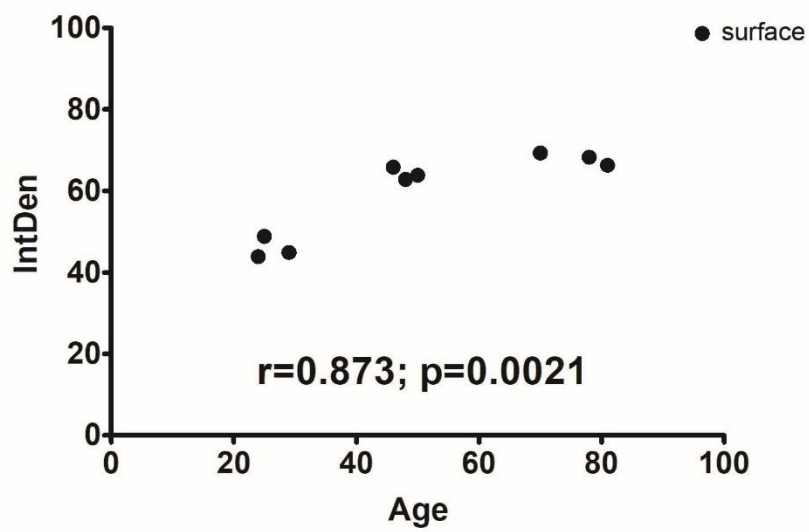
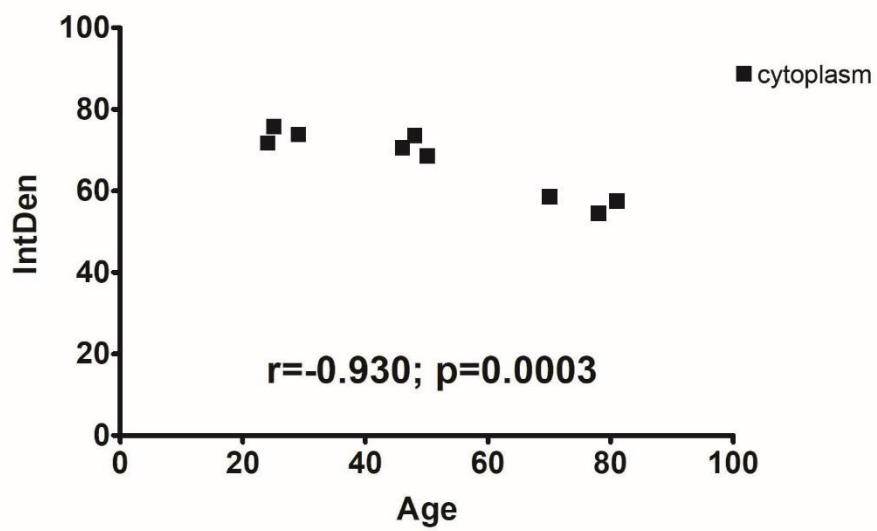
408 Total RNA was extracted by conjunctival imprints and cDNA was synthesized for specific amplification in  
409 relative real time platform. All comparisons were performed against young imprints (REST analysis followed  
410 by Tukey-Kramer post hoc. (A) A significant upregulation of TLR2 was observed in old imprints, while no  
411 significant changes were detected for TLR4 and TLR9. (B) In old imprints, a significant deregulation was  
412 observed for TLR7 and TLR8, while TLR5 was unchanged. Asterisks (\*) in histograms point at significant  
413 differences between subgroups ( $p < 0.05$ ) Dashed line indicate range significance for REST analysis (2log  
414 comparisons).

**A****B**

416

417 **Figure 3. Age-related TLRs changes**

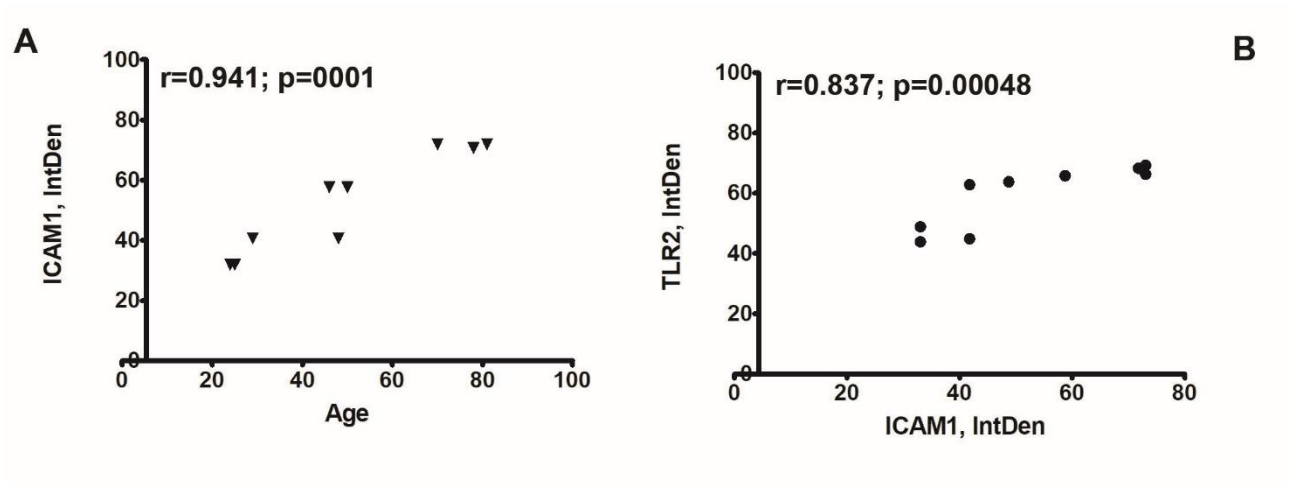
418 (A) Epifluorescence acquisitions (overlays; x200) of TLR immune-labeled (green/cy2) imprints over a blue  
419 nuclear counterstaining (dapi/blue). (B) Correlation showing significant increasing expression of surface TLRs  
420 with aging associated to a (C) reduction of cytoplasmic TLRs. Pearson post hoc: R and p values are reported  
421 in the panels

**A****B****C**

423

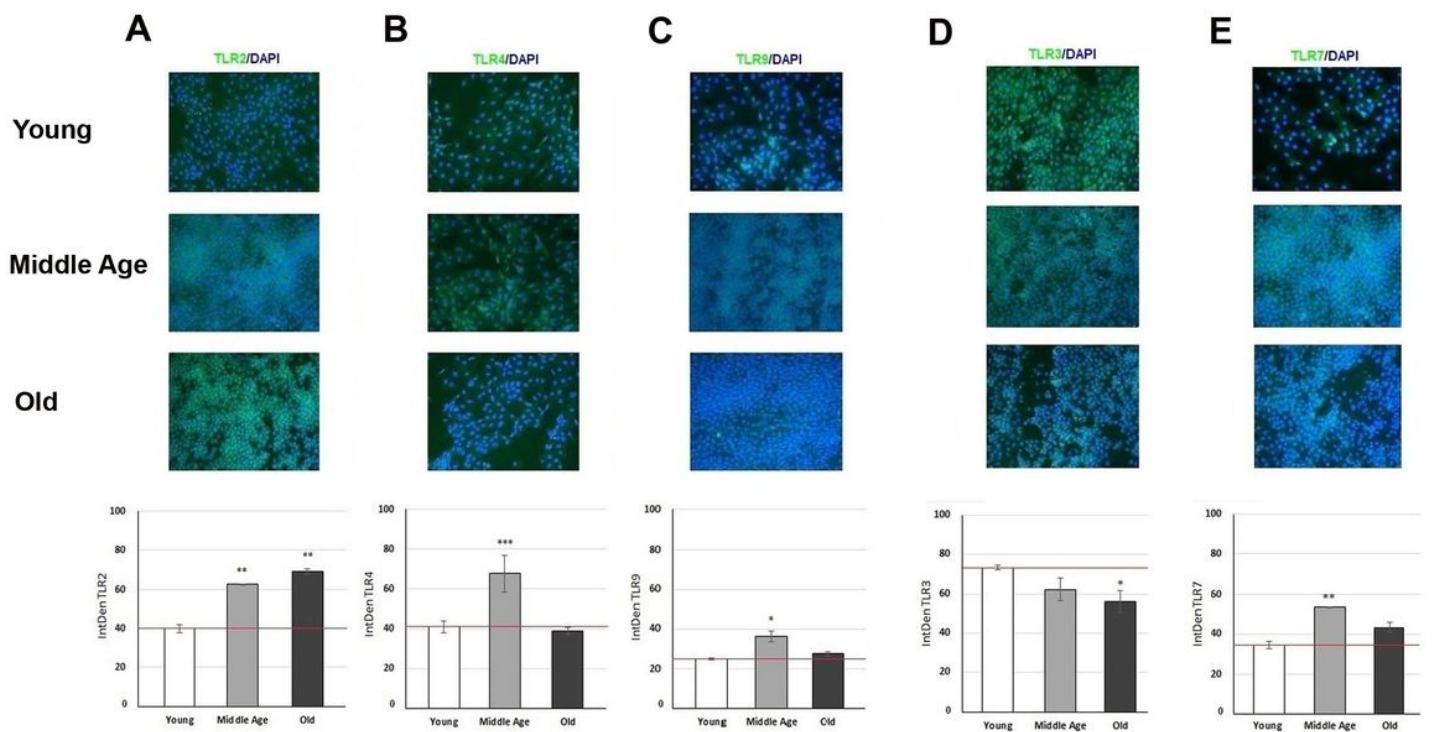
424 **Figure 4. TLR2 and InflammAging.**

425 (A) I-CAM 1 expression increases with aging, showing biomolecular inflammAging changes in our  
426 population. (B) Increasing I-CAM 1 directly correlate with increase TLR2 expression within the age.



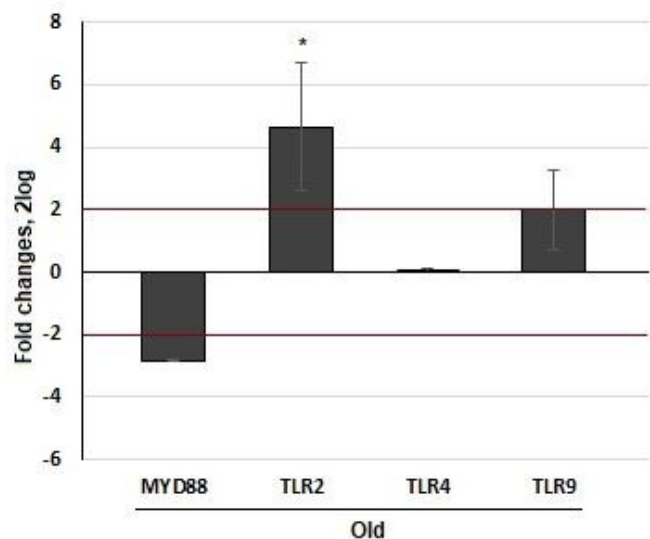
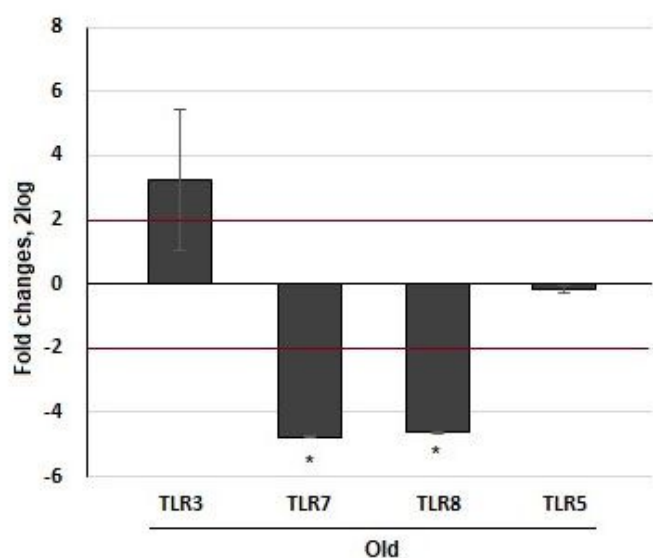
427

# Figures



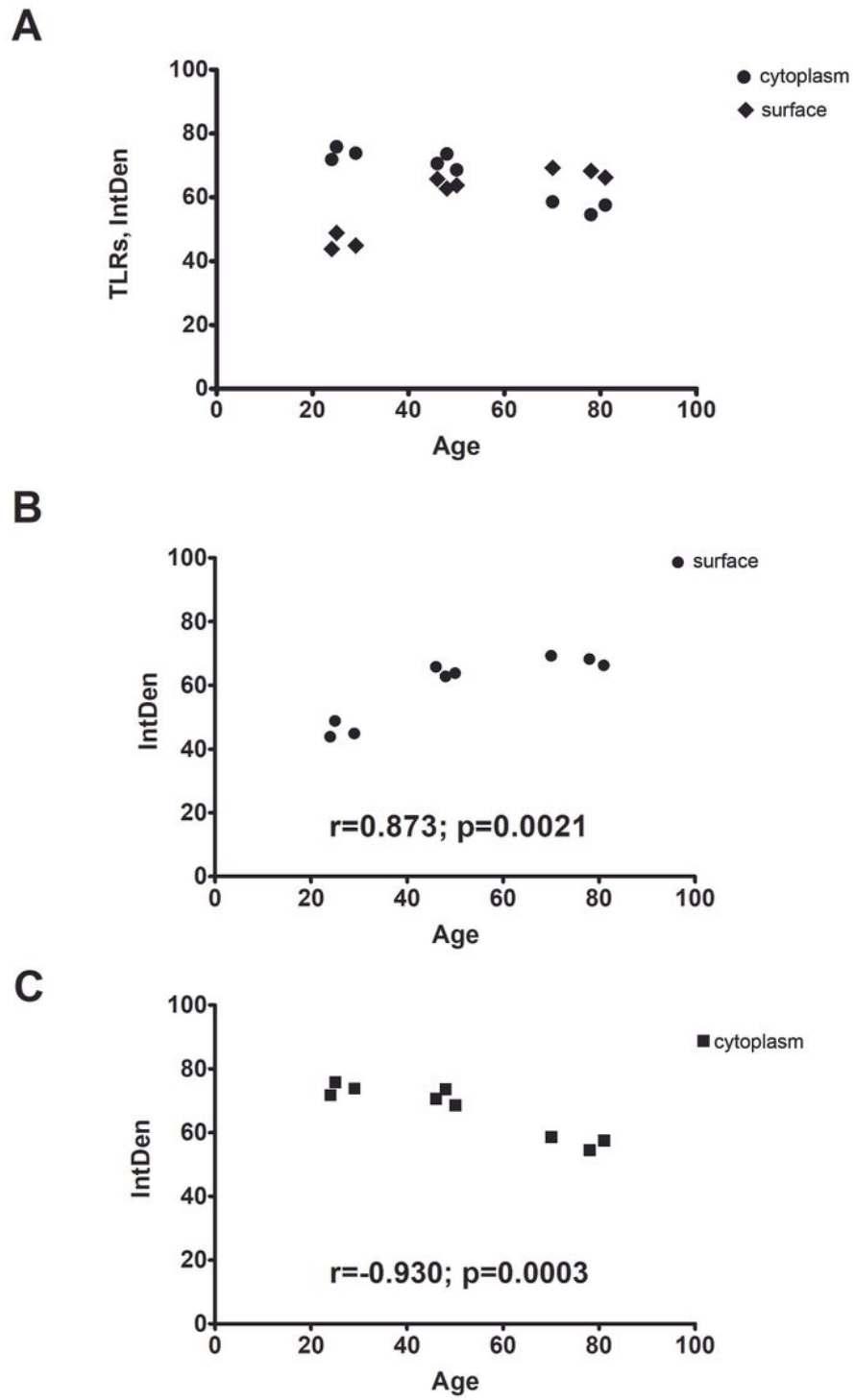
**Figure 1**

immunoreactivity in conjunctival imprints Epifluorescence acquisitions (overlays; x200) of TLR immunolabeled (green/cy2) imprints over a blue nuclear counterstaining (dapi/blue). Representative merge panels showing the specific TLR2 (A), TLR4 (B) and TLR9 (C) TLR3 (D), TLR7 (E) immunoreactivity, respectively in young (upper), middle age (middle) and old (lower) groups. As shown, an increase of TLR2 was observed by aging. A significant increase of TLR4 was observed in middle age imprints. Histograms are IntDen values according to the ImageJ analysis, after channel split and background normalization. Red line indicates the young expression and \* pointed at  $p < 0.05$  significant level.

**A****B****Figure 2**

Changes in TLRs transcript expression at aging. Total RNA was extracted by conjunctival imprints and cDNA was synthesized for specific amplification in relative real time platform. All comparisons were performed against young imprints (REST analysis followed by Tukey-Kramer post hoc). (A) A significant upregulation of TLR2 was observed in old imprints, while no significant changes were detected for TLR4 and TLR9. (B) In old imprints, a significant deregulation was observed for TLR7 and TLR8, while TLR5

was unchanged. Asterisks (\*) in histograms point at significant differences between subgroups ( $p<0.05$ )  
Dashed line indicate range significance for REST analysis (2log comparisons).



**Figure 3**

Age-related TLRs changes (A) Epifluorescence acquisitions (overlays; x200) of TLR immune-labeled (green/cy2) imprints over a blue nuclear counterstaining (dapi/blue). (B) Correlation showing significant



increasing expression of surface TLRs with aging associated to a (C) reduction of cytoplasmic TLRs. Pearson post hoc: R and p values are reported in the panels

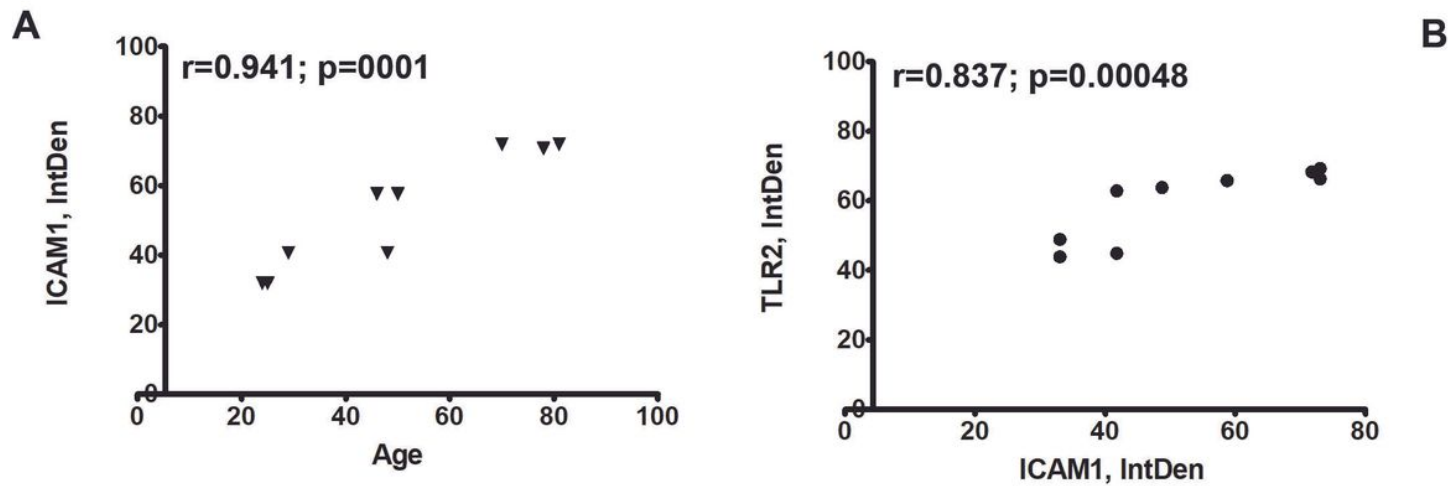


Figure 4

TLR2 and InflammAging. (A) I-CAM 1 expression increases with aging, showing biomolecular inflammAging changes in our population. (B) Increasing I-CAM 1 directly correlate with increase TLR2 expression within the age.