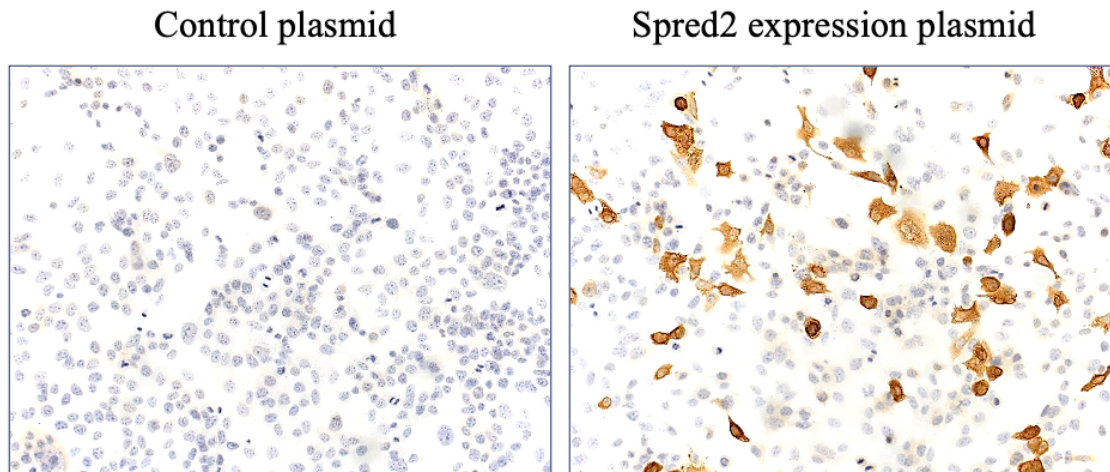


Expression of Spred2 in the urothelial tumorigenesis of the urinary bladder

Shinsuke Oda¹, Masayoshi Fujisawa¹, Li Chunning¹, Toshihiro Ito², Takahiro Yamaguchi¹, Teizo Yoshimura¹, and Akihiro Matsukawa^{1*}

Supplementary Figure 1,2



Supplementary Figure 1. Immunoreactivity of Spred2 antibody. H1993 cells cultured on Lab-Tek II Slide (8 Chamber, Electron Microscopy Sciences, Hatfield, PA, USA) were transfected with Spred2 expression plasmid (OriGene, Rockville, MD, USA) or control plasmid (OriGene) using turbofectin 8.0 (OriGene). The cells were fixed in 95% ethanol and immunostained with anti-Spred2 polyclonal antibody using the polymer method (Polink-2 Plus HRP RABBIT with DAB kit, GBI, Bothell, WA, USA). Spred2 positive cells were shown in brown.

