

Elevated Baseline Circulating Platelet-to-Lymphocyte Ratio And Survival In Stage Ⅱ Gastric Cancer Patients: A Meta-Analysis

Guoming Hu (✉ hgmplj@126.com)

Shaoxing People's Hospital, Zhejiang University School of Medicine

Shimin Wang

Shaoxing People's Hospital, Zhejiang University School of Medicine

Liwei Meng

Shaoxing People's Hospital, Zhejiang University School of Medicine

Liming Huang

Shaoxing People's Hospital, Zhejiang University School of Medicine

Research Article

Keywords: baseline circulating platelet-to-lymphocyte ratio, adverse outcome, stage Ⅱ gastric cancer, meta-analysis

Posted Date: May 3rd, 2021

DOI: <https://doi.org/10.21203/rs.3.rs-454922/v1>

License: © ⓘ This work is licensed under a Creative Commons Attribution 4.0 International License. [Read Full License](#)

Abstract

Background

Systemic inflammatory response (SIR) plays important roles in initiation, promotion and progression of tumor. However, the prognostic role of baseline circulating platelet-to-lymphocyte ratio (PLR) (known as a marker of SIR) in human stage \geq gastric cancer (GC) remains controversial. Hence, we performed this meta-analysis to assess the value of it in prognosis prediction for stage \geq GC patients.

Methods

We searched PubMed, Embase and EBSCO to identify the studies and computed extracted data with STATA 12.0.

Results

A total of 2721 patients with stage \geq GC from 12 published studies were incorporated into this meta-analysis. We found that elevated baseline circulating PLR was significantly associated with decreased overall survival (OS), but not with progression-free survival (PFS) in stage \geq GC patients. However, in stratified analyses, high PLR was remarkably associated with worse 1-year OS, but not with 2-year, 3-year, 4-year or 5-year OS; In addition, it was considerably related with reduced 6-month PFS, but not with 1-year or 2-year PFS. Moreover, high PLR markedly correlated with peritoneal metastasis of patients.

Conclusion

elevated baseline circulating PLR decreased 1-year OS and 6-month PFS in stage \geq GC patients, implicating that it is a valuable prognostic index for these patients and modifying the inflammatory responses may have a potential for effective treatment.

Introduction

Human gastric cancer (GC) is one of the most common fatal malignancies worldwide. Although progress in early diagnosis and therapeutic strategies have benefited these patients, the advance in prognosis prediction especially in stage \geq GC still remains poor. Recently, several systemic inflammatory response (SIR) - related hematological factors have been extensively investigated to risk-stratify cancer patients to improve treatment selection and to predict survival in many types of cancers including stage \geq GC.

The platelet-to-lymphocyte ratio (PLR), known as a marker of the SIR, which can easily be measured on the basis of absolute platelets and lymphocytes in the clinical setting, has been regarded as a potential prognostic index in various cancers[1]. Previous studies have reported that circulating PLR was remarkably associated with clinical outcomes of GC patients[2, 3]. However, different stages indicate very differential survival of cancer; and SIR will also vary as tumor progresses. They haven't clarified the association between such index and prognosis in stage \geq GC patients in those studies. Although many researchers have investigated the value of baseline circulating PLR in prognosis prediction for stage \geq GC patients, their results were not consistent even controversial[4-6]. A re-assessment is therefore warranted. Moreover, the potential of PLR in peripheral blood before treatment as an effective prognostic index and therapeutic strategy is necessary to be explored.

In this study, we performed the meta-analysis to quantitatively summarize the association between baseline circulating PLR and clinical outcomes such as overall survival (OS) and progression-free survival (PFS) in stage \geq GC patients, and discovered that elevated baseline circulating PLR was significantly associated with decreased 1-year OS and 6-month PFS, but not with 2-year, 3-year, 4-year or 5-year OS, and 1-year or 2-year PFS in stage \geq GC patients. Thus, baseline circulating PLR may be a prognostic index for these patients.

Methods

Search strategy

We searched PubMed, Embase and EBSCO for studies assessing the PLR in peripheral blood before treatment and survival in stage \geq GC patients from 1996 to March 31th 2021. The keywords adopted for search were ("platelet to lymphocyte ratio" OR "PLR" OR "inflammation") AND ("gastric cancer" OR "stomach cancer") AND ("prognosis" OR "survival"). A total of 524, 836 and 1748 entries were identified in PubMed, Embase and EBSCO respectively.

Inclusion and exclusion criteria

Inclusion criteria of the meta-analysis were: studies must have (1) been published as original articles in English; (2) assessed human subjects with histopathologically diagnosed with stage \geq GC; (3) provided hazard ratios (HRs) with 95% confidence interval (CI), or Kaplan – Meier curves of high and low circulating PLR before treatment with OS or PFS.

The exclusion criteria were that studies have not been published as research articles or full texts including commentary, case report and letters to editors and conference abstracts; Studies without sufficient data for hazard ratios (HRs) evaluation; studies that detected PLR not in peripheral blood or after treatment or not in stage \geq disease.

Endpoints

In this meta-analysis, we recorded OS as the primary endpoint; while PFS were regarded as the second endpoint. Individual studies defined cut-offs of PLR and classified patients into high- and low- groups.

Data extraction

Two authors (GM.H. and SM.W.) independently reviewed and extracted information including first author's name, publication year, number of patients, median age, time of follow-up and cut-off value to determine high PLR. OS, PFS and clinicopathological data including tumor differentiation, peritoneal, liver or lung metastasis etc were extracted from the text or tables.

Quality assessment

Two independent authors adopted Newcastle–Ottawa Scale (NOS)[7] to assess the quality of individual study, and achieved consensus for each item under the help of the third or more authors. Six or above that the study scored was regarded as high quality.

Statistical Analysis

Relevant data were combined into hazard ratios (HRs) for OS, PFS, and odds ratios (ORs) for clinicopathological features such as tumor differentiation, peritoneal metastasis etc with STATA 12.0 respectively based on the random-effect model if statistical heterogeneity was considerable[8] otherwise, the fixed – effect model was applied [9]. We also adopted sensitivity analysis, Begg's funnel plot and Egger's test [10] to determine the influence of individual study on the overall result and potential publication bias respectively. All *P* values were two-sided and below 0.05 was treated as statistical significance.

Results

Search results and description of studies

Flow chart diagram of study selection was exhibited in Fig. S1. Twelve studies with 2721 patients were ultimately included in this meta-analysis[4-6, 11-19]. And all these studies were scored 6 or above after careful assessment with the Newcastle–Ottawa Scale (NOS). Characteristics of researches being appropriate for data integration were exhibited in Table 1 and Table S1.

Meta-analyses

Overall survival (OS)

The meta-analysis exhibited that increased baseline PLR in peripheral blood notably decreased OS (HR = 1.50, 95% CI 1.19 to 1.90, *P* < 0.001) in patients with stage \geq GC. (Fig. 1)

However, in stratified analyses, we noted that elevated circulating PLR before treatment was remarkably associated with worse 1-year survival (OR = 0.49, 95% CI 0.35 to 0.67, *P* < 0.001), but not with 2-year (OR = 0.64, 95% CI 0.39 to 1.03, *P* = 0.068), 3-year (OR = 0.90, 95% CI 0.47 to 1.72, *P* = 0.741), 4-year (OR = 0.51, 95% CI 0.16 to 1.59, *P* = 0.243) or 5-year (OR = 0.58, 95% CI 0.06 to 5.49, *P* = 0.632) survival rate. (Fig. 2)

Progression-free survival (PFS)

The pooled data indicated that high baseline circulating PLR was not markedly associated with reduced PFS in patients (HR = 1.19, 95% CI 0.91 to 1.55, *P* = 0.213). (Fig. 3)

in stratified analyses, as shown in Fig. 4, the results revealed that it was considerably related with worse 6-month PFS (OR = 0.55, 95% CI 0.33 to 0.92, *P* = 0.022), but not with 1-year (OR = 0.48, 95% CI 0.19 to 1.21, *P* = 0.121) or 2-year PFS (OR = 0.83, 95% CI 0.22 to 3.19, *P* = 0.787).

Clinicopathological features

We next investigated whether high baseline circulating PLR correlated with clinicopathological features, and discovered that it was considerably associated with peritoneal metastasis (OR = 1.30, 95% CI 1.04 to 1.63, *P* = 0.024), but not with liver (OR = 1.41, 95% CI 0.84 to 2.39, *P* = 0.195) or lung (OR = 1.03, 95% CI 0.35 to 3.04, *P* = 0.954) metastasis in stage \geq disease. (Fig. S2A, B and C) And there was no correlation between PLR and tumor differentiation (OR = 1.10, 95% CI 0.82 to 1.47, *P* = 0.528) of patients. (Fig. S2D)

Sensitivity analysis

Sensitivity analysis demonstrated that each included research had no impact on the overall result for OS or PFS. (Fig. S3)

Publication bias

Funnel plot and Egger's test indicated that no significant publication bias existed between combined therapy and OS ($P = 0.348$) or PFS ($P = 0.715$) in patients. (Fig. S4)

Discussion

Systemic inflammatory response is closely related to the initiation, promotion and progression of cancer.[20] In this study, we found that high baseline circulating PLR remarkably decreased OS in stage III GC patients; However, we noted that it didn't reduce PFS in these patients. In stratified analyses, high PLR was remarkably associated with worse 1-year OS and 6-month PFS, but not with 2-year, 3-year, 4-year or 5-year OS, or 1-year, 2-year PFS. In addition, high PLR was considerably correlated with peritoneal metastasis of GC. These findings suggested that high baseline circulating PLR played a critical role in promoting tumor progression and metastasis of GC.

Several potential mechanisms might be responsible for the close association between increased PLR and worse prognosis. Previous researches have demonstrated that platelets play a key role in tumor progression and are associated with poor survival in patients with various types of malignancies[21]. Platelets can induce angiogenesis via the secretion of vascular endothelial growth factor (VEGF) and inhibit anti-tumor response mediated by effector T cells[22]. Platelets can also protect the circulating tumor cells (CTCs) from shearing stresses during circulation[23]. Lymphocytes have an important role in cancer immune surveillance and prevent development of malignancy[24]. The decrease in CD4+ T-helper cells may lead to a suboptimal lymphocyte-mediated immune response to cancer cells[25]. Taken together, we observed that an increase in the platelet count or decrease in the lymphocyte count in the peripheral blood correlate with tumor initiation and progression. Hence, the PLR may help to predict prognosis and reflect the degree of tumor progression in stage III GC. However, in this study, we noted that pre-treatment PLR only correlated with worse 1-year OS and 6-month PFS rather than 2-year, 3-year, 4-year or 5-year OS, or 1-year, 2-year PFS. The mechanism underlying such results needs further investigation.

There is a limitation that should be noted from this meta-analysis, studies with negative results might not be published, which could cause potential publication bias.

In conclusion, elevated circulating PLR before treatment leads to worse 1-year OS and 6-month PFS in stage III GC patients, implicating that it might be a valuable prognostic index and modifying the inflammatory responses may have a potential for effective treatment for these patients.

Abbreviations

PLR, platelet-to-lymphocyte ratio; SIR, systemic inflammatory response; GC, gastric cancer; OS, overall survival; PFS, progression-free survival; HR, hazard ratios; OR, odds ratios; CI, confidence interval; NR: not reported.

Declarations

Ethics approval and consent to participate

The ethical approval was unnecessary because this study based on summary and analysis of the results of previous studies.

Consent for publication

Not applicable.

Availability of data and materials

The datasets supporting the conclusions of this article are included within the article.

Competing interests

The authors have declared that no competing interests exist.

Acknowledgements

Not applicable.

Funding

The research was funded by the National Natural Science Foundation of China (Grant No. 81702803, GMH) and was also partly supported by *Shaoxing Science and Technology Plan Project (2018C30055, LMH)*.

Authors' contributions

GM.H. conceived of the study, participated in its design, extracted data and drafted the manuscript. SM.W. participated in data extraction. LW.M. participated in the statistical analysis. LM.H. participated in the design of the study. All authors read and approved the final manuscript.

References

1. Albayrak S, Zengin K, Tanik S, Atar M, Unal SH, Imamoglu MA, Gurdal M: **Can the neutrophil-to-lymphocyte ratio be used to predict recurrence and progression of non-muscle-invasive bladder cancer?** *The Kaohsiung journal of medical sciences* 2016, **32**(6):327-333.
2. Cao W, Yao X, Cen D, Zhi Y, Zhu N, Xu L: **The prognostic role of platelet-to-lymphocyte ratio on overall survival in gastric cancer: a systematic review and meta-analysis.** *BMC gastroenterology* 2020, **20**(1):16.
3. Zhang X, Zhao W, Yu Y, Qi X, Song L, Zhang C, Li G, Yang L: **Clinicopathological and prognostic significance of platelet-lymphocyte ratio (PLR) in gastric cancer: an updated meta-analysis.** *World journal of surgical oncology* 2020, **18**(1):191.
4. Zhao G, Liu N, Wang S, Guo J, Song X, Qi Y, Qiu W, Lv J: **Prognostic significance of the neutrophil-to-lymphocyte and platelet-to-lymphocyte ratio in patients with metastatic gastric cancer.** *Medicine* 2020, **99**(10):e19405.
5. Wang Q, Yang Y, Zhang YP, Zou Z, Qian X, Liu B, Wei J: **Prognostic value of carbohydrate tumor markers and inflammation-based markers in metastatic or recurrent gastric cancer.** *Medical oncology* 2014, **31**(12):289.
6. Wang H, Ding Y, Li N, Wu L, Gao Y, Xiao C, Jiang H, Zheng Y, Mao C, Deng J *et al*: **Prognostic Value of Neutrophil-Lymphocyte Ratio, Platelet-Lymphocyte Ratio, and Combined Neutrophil-Lymphocyte Ratio and Platelet-Lymphocyte Ratio in Stage IV Advanced Gastric Cancer.** *Frontiers in oncology* 2020, **10**:841.
7. Stang A: **Critical evaluation of the Newcastle-Ottawa scale for the assessment of the quality of nonrandomized studies in meta-analyses.** *European journal of epidemiology* 2010, **25**(9):603-605.
8. Kuritz SJ, Landis JR, Koch GG: **A general overview of Mantel-Haenszel methods: applications and recent developments.** *Annual review of public health* 1988, **9**:123-160.
9. DerSimonian R, Kacker R: **Random-effects model for meta-analysis of clinical trials: an update.** *Contemporary clinical trials* 2007, **28**(2):105-114.
10. Egger M, Davey Smith G, Schneider M, Minder C: **Bias in meta-analysis detected by a simple, graphical test.** *Bmj* 1997, **315**(7109):629-634.
11. Petrillo A, Laterza MM, Tirino G, Pompella L, Ventriglia J, Pappalardo A, Famiglietti V, Martinelli E, Ciardiello F, Orditura M *et al*: **Systemic-inflammation-based score can predict prognosis in metastatic gastric cancer patients before first-line chemotherapy.** *Future oncology* 2018, **14**(24):2493-2505.
12. Wang J, Qu J, Li Z, Che X, Liu J, Teng Y, Jin B, Zhao M, Liu Y, Qu X: **Pretreatment platelet-to-lymphocyte ratio is associated with the response to first-line chemotherapy and survival in patients with metastatic gastric cancer.** *Journal of clinical laboratory analysis* 2018, **32**(1).
13. Zhai Z, Gao J, Zhu Z, Cong X, Lou S, Han B, Yin X, Zhang Y, Xue Y: **The Ratio of the Hemoglobin to Red Cell Distribution Width Combined with the Ratio of Platelets to Lymphocytes Can Predict the Survival of Patients with Gastric Cancer Liver Metastasis.** *BioMed research international* 2021, **2021**:8729869.
14. Zhou D, Wu Y, Zhu Y, Lin Z, Yu D, Zhang T: **The Prognostic Value of Neutrophil-to-lymphocyte Ratio and Monocyte-to-lymphocyte Ratio in Metastatic Gastric Cancer Treated with Systemic Chemotherapy.** *Journal of Cancer* 2020, **11**(14):4205-4212.
15. Mimatsu K, Fukino N, Ogasawara Y, Saino Y, Oida T: **Utility of Inflammatory Marker- and Nutritional Status-based Prognostic Factors for Predicting the Prognosis of Stage IV Gastric Cancer Patients Undergoing Non-curative Surgery.** *Anticancer Res* 2017, **37**(8):4215-4222.
16. Huang Z, Liu Y, Yang C, Li X, Pan C, Rao J, Li N, Liao W, Lin L: **Combined neutrophil/platelet/lymphocyte/differentiation score predicts chemosensitivity in advanced gastric cancer.** *BMC Cancer* 2018, **18**(1):515.
17. Wang F, Liu ZY, Xia YY, Zhou C, Shen XM, Li XL, Han SG, Zheng Y, Mao ZQ, Gong FR *et al*: **Changes in neutrophil/lymphocyte and platelet/lymphocyte ratios after chemotherapy correlate with chemotherapy response and prediction of prognosis in patients with unresectable gastric cancer.** *Oncology letters* 2015, **10**(6):3411-3418.
18. Aldemir MN, Turkeli M, Simsek M, Yildirim N, Bilen Y, Yetimoglu H, Bilici M, Tekin SB: **Prognostic Value of Baseline Neutrophil-Lymphocyte and Platelet-Lymphocyte Ratios in Local and Advanced Gastric Cancer Patients.** *Asian Pacific journal of cancer prevention : APJCP* 2015, **16**(14):5933-5937.
19. Lee S, Oh SY, Kim SH, Lee JH, Kim MC, Kim KH, Kim HJ: **Prognostic significance of neutrophil lymphocyte ratio and platelet lymphocyte ratio in advanced gastric cancer patients treated with FOLFOX chemotherapy.** *Bmc Cancer* 2013, **13**.
20. Grivennikov SI, Greten FR, Karin M: **Immunity, inflammation, and cancer.** *Cell* 2010, **140**(6):883-899.

21. Gu XB, Gao XS, Cui M, Xie M, Peng C, Bai Y, Guo W, Han LJ, Gu XD, Xiong W: **Clinicopathological and prognostic significance of platelet to lymphocyte ratio in patients with gastric cancer.** *Oncotarget* 2016, **7**(31):49878-49887.
22. Haemmerle M, Stone RL, Menter DG, Afshar-Kharghan V, Sood AK: **The Platelet Lifeline to Cancer: Challenges and Opportunities.** *Cancer cell* 2018, **33**(6):965-983.
23. Schlesinger M: **Role of platelets and platelet receptors in cancer metastasis.** *Journal of hematology & oncology* 2018, **11**.
24. Dunn GP, Old LJ, Schreiber RD: **The immunobiology of cancer immunosurveillance and immunoediting.** *Immunity* 2004, **21**(2):137-148.
25. An X, Ding PR, Li YH, Wang FH, Shi YX, Wang ZQ, He YJ, Xu RH, Jiang WQ: **Elevated neutrophil to lymphocyte ratio predicts survival in advanced pancreatic cancer.** *Biomarkers : biochemical indicators of exposure, response, and susceptibility to chemicals* 2010, **15**(6):516-522.

Tables

Table 1.

PLR, platelet-to-lymphocyte ratio; M, male; F, female; OS, overall survival; PFS, progression-free survival; NR: not reported.

Research	Year	Patients' No.	M / F	median age (range) (year)	Cut-off value	PLR: (H/L)	TNM stage	Treatment	median follow-up (months)	Clinical outcome	Quality Score (NOS)
Zhao, G.H. etal[4]	2020	110	84/26	≥65 44.55% <65 55.45%	≥ 143.39	71/39	IV	chemotherapy	11.6	OS	7
Zhou, D.Y. etal[14]	2020	537	216/321	55.0 (25, 83)	≥ 284	NR	IV	chemotherapy	NR	OS, PFS	7
Wang, H. etal[6]	2020	466	327/139	≥60 47.85% <60 52.15%	≥ 174.79	233/233	IV	chemotherapy	NR	OS, PFS	7
Petrillo, A. etal[11]	2018	151	97/54	≥62 51.6% <62 48.4%	≥ 157	76/75	IV	non-curative surgery and chemotherapy	29 (20.4, 37.5)	OS, PFS	8
Huang, Z.H. etal[16]	2018	136	82/54	55 (28, 85)	≥ 223	47/89	IV	chemotherapy	NR	PFS	6
Wang, J. etal[12]	2018	273	186/87	56.68±10.73	≥ 201.6	67/206	□	chemotherapy	NR	OS	7
Aldemir, M.N. etal[18]	2015	50	30/20	65 (40, 82)	≥ 170	23/27	□	chemotherapy	NR	OS	7
Wang, F. etal[17]	2015	120	75/45	68 (32, 82)	≥ 235	60/60	□	chemotherapy	≤40	OS, PFS	8
Wang, Q. etal[5]	2014	365	270/95	≥50 76.7% <50 23.3%	≥ 160	197/168	□	chemotherapy	NR	OS	7
Lee,S. etal[19]	2013	174	114/60	(24, 74)	≥ 160	86/88	□	chemotherapy	14.9 (1.0, 47.9)	OS	7
Mimatsu, K. etal[15]	2017	33	25/8	(62.0, 79.8)	≥ 200	16/17	IV	non-curative surgery and chemotherapy	NR	OS	7
Zhai, Z. etal[13]	2021	306	245/61	58 (28, 85)	≥ 128	163/143	IV	non-curative surgery and chemotherapy	11	OS	7

Figures

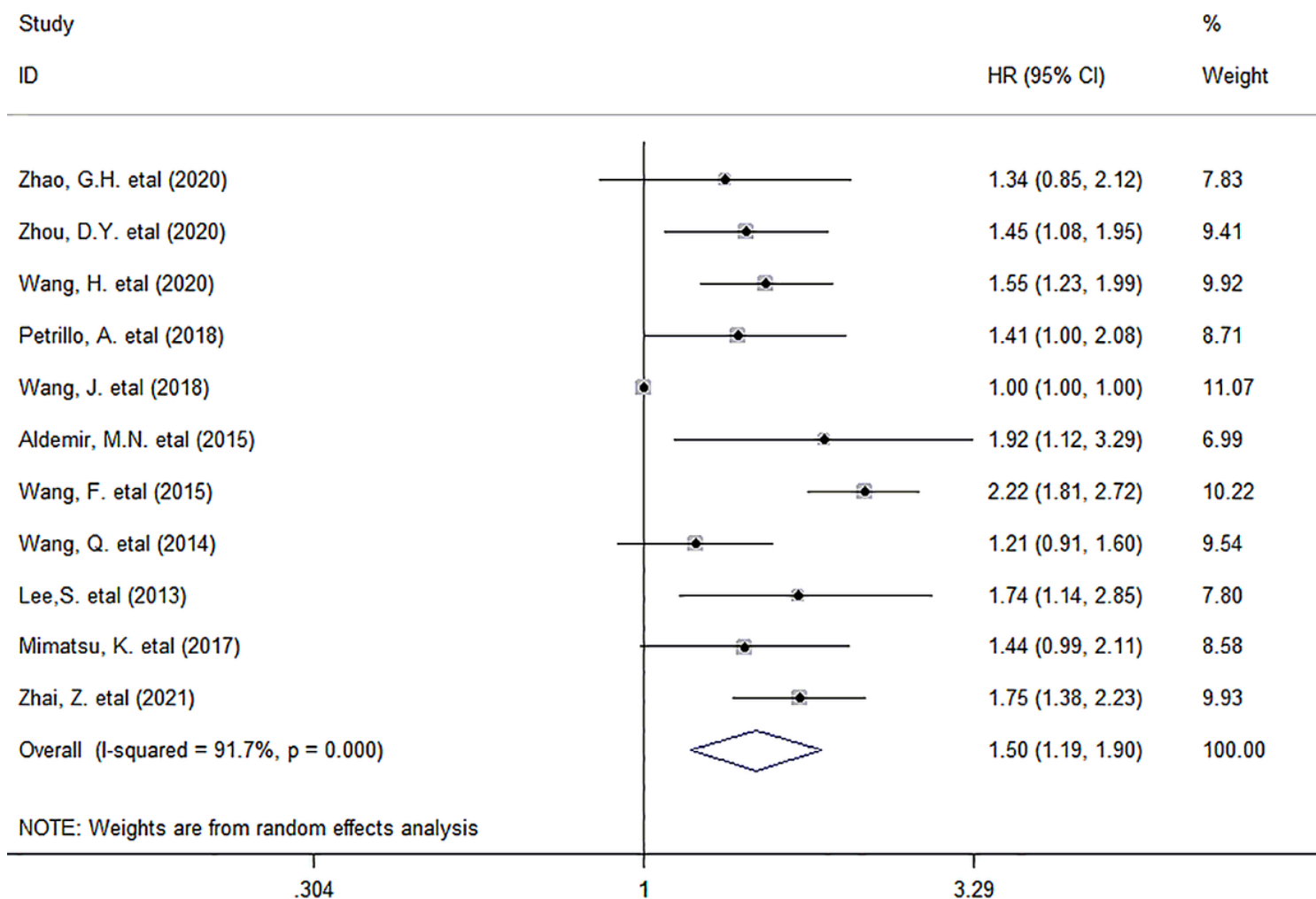


Figure 1

Forest plots describing HR of the association between elevated baseline circulating PLR and OS in stage II GC patients. HR: hazard ratio; GC: gastric cancer; OS: overall survival.

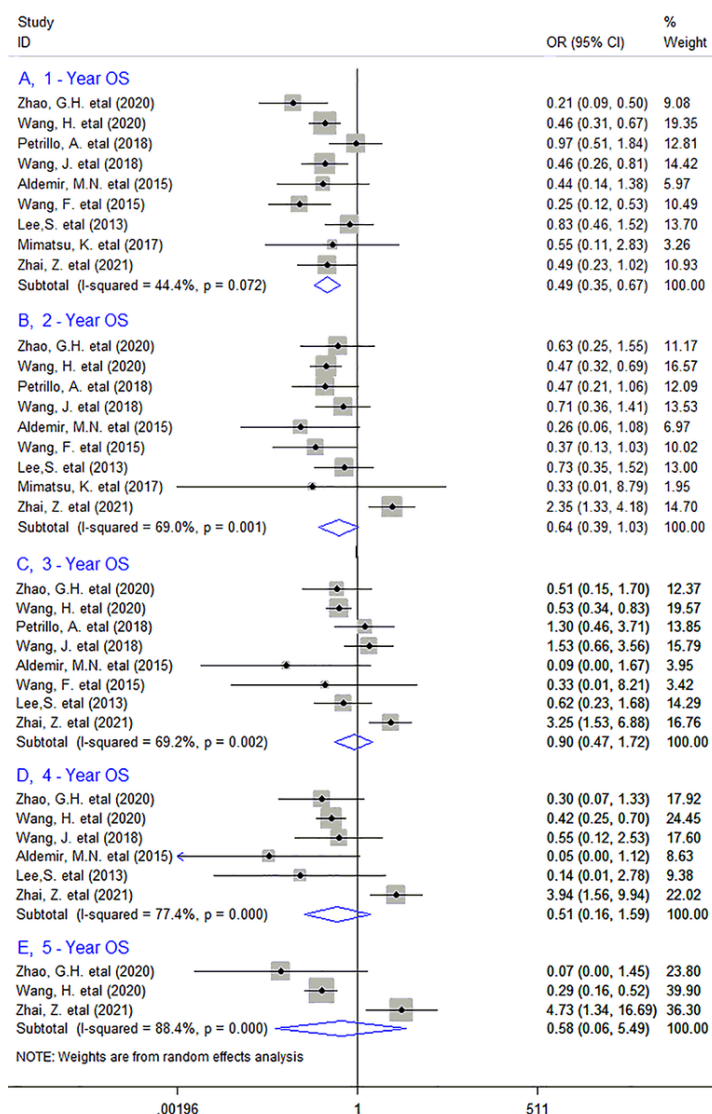


Figure 2

Forest plots describing ORs of the association between elevated baseline circulating PLR and OS at 1-year, 2-year, 3-year, 4-year and 5-year in stage II GC patients. OR, odds ratios; GC gastric cancer OS: overall survival.

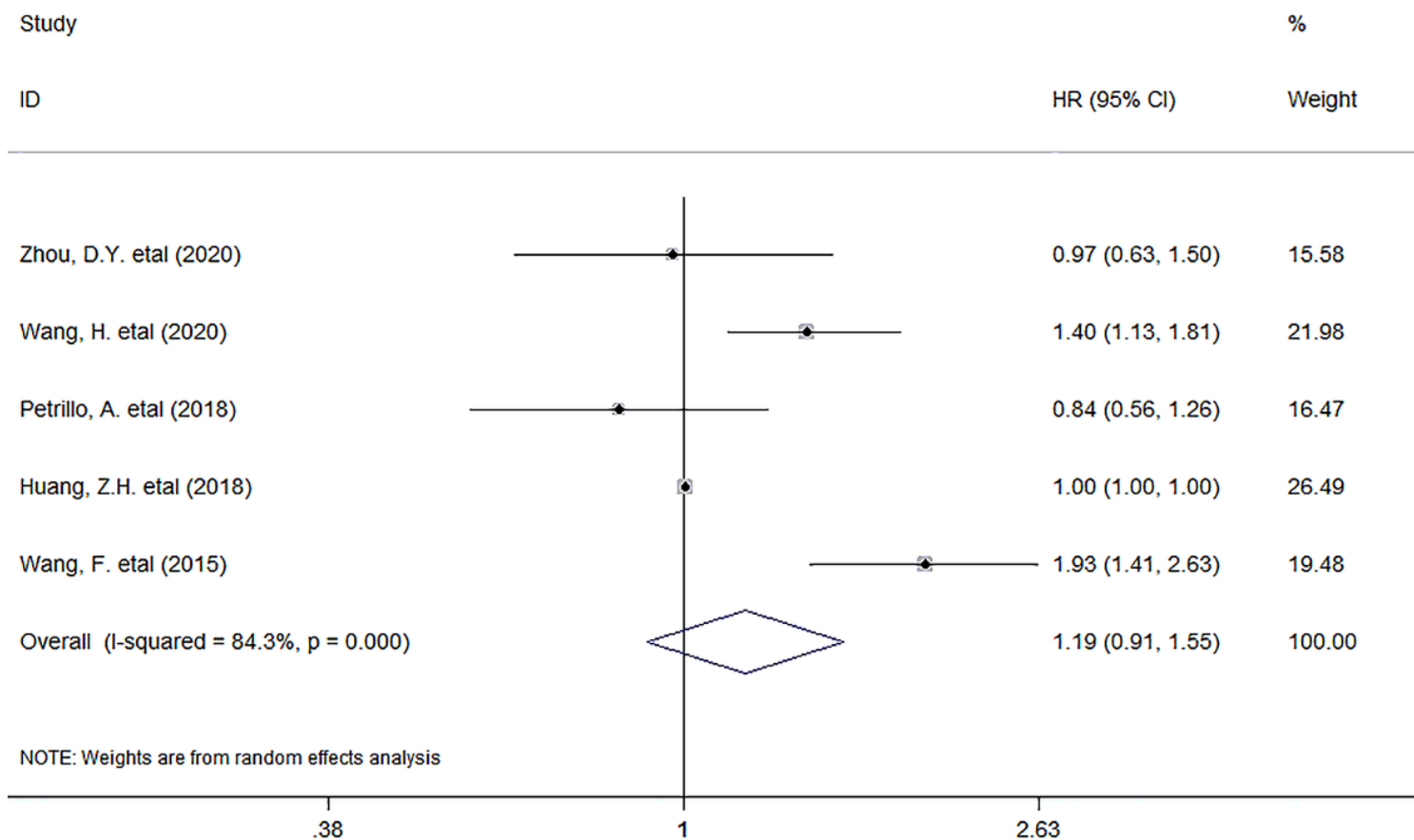


Figure 3

Forest plots describing HRs of the association between elevated baseline circulating PLR and PFS in stage II GC patients. HR: hazard ratio; GC: gastric cancer; PFS, progression-free survival.

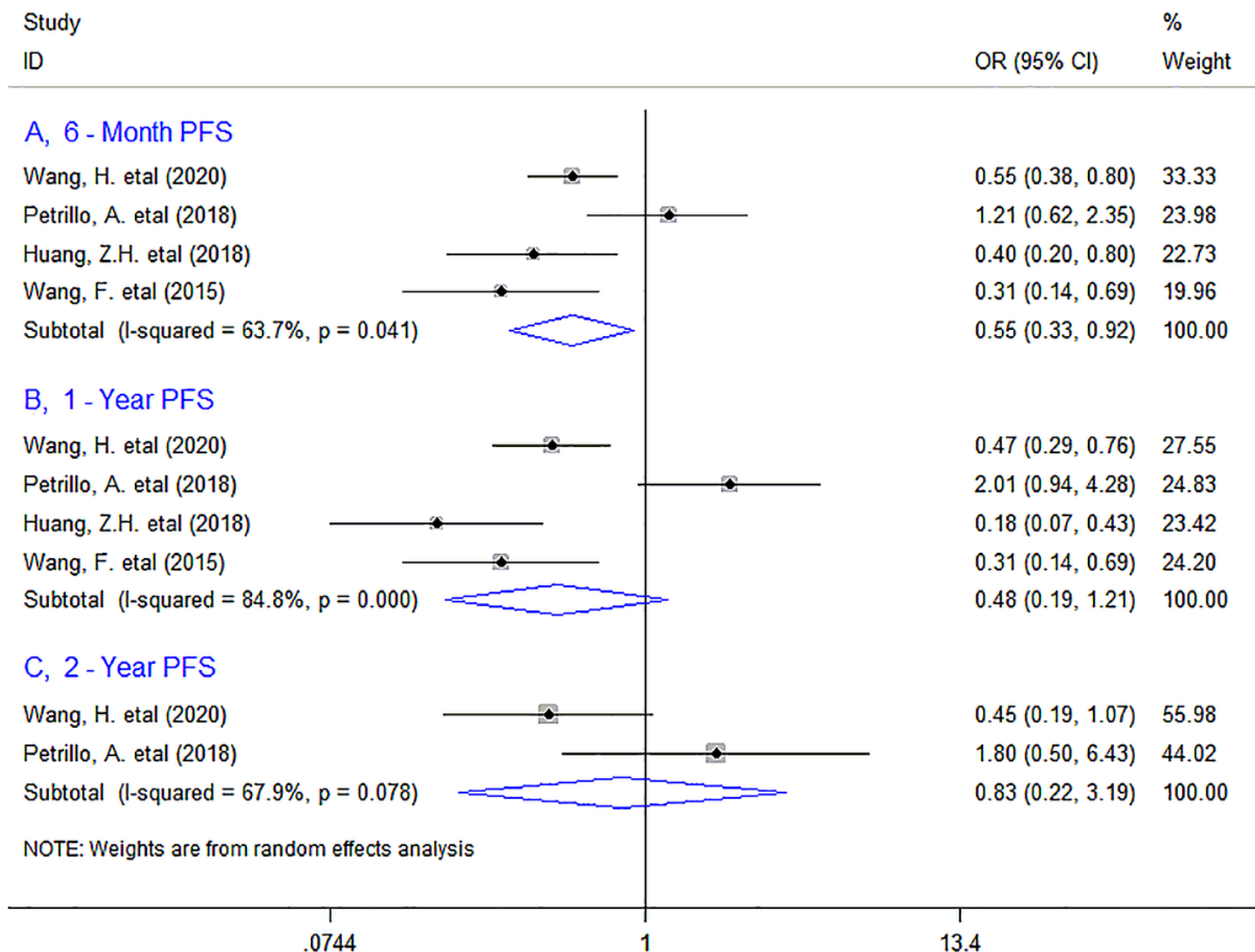


Figure 4

Forest plots describing ORs of the association between elevated baseline circulating PLR and PFS at 6-month, 1-year, 2-year in stage II GC patients. OR, odds ratios; GC gastric cancer; PFS, progression-free survival.

Supplementary Files

This is a list of supplementary files associated with this preprint. Click to download.

- [HuSupportingInformation.doc](#)