

# Financial burden impact quality of life among Lymphatic Filariasis Patients

**Samuel Opoku Asiedu**

Kumasi Center for Collaborative Research

**Alexander Kwarteng** (✉ [senkwarteng@yahoo.co.uk](mailto:senkwarteng@yahoo.co.uk))

Kwame Nkrumah University of Science and Technology <https://orcid.org/0000-0002-0893-2908>

**Emmanuel Kobla Atsu Amewu**

Kwame Nkrumah University of Science and Technology

**Priscilla Kini**

Kwame Nkrumah University of Science and Technology

**Bill Clinton Aglomasa**

Kwame Nkrumah University of Science and Technology

**John Boulard Forkuor**

Kwame Nkrumah University of Science and Technology

---

## Research article

**Keywords:** Lymphatic Filariasis, quality of life, Ghana

**Posted Date:** December 28th, 2020

**DOI:** <https://doi.org/10.21203/rs.3.rs-40332/v4>

**License:**   This work is licensed under a Creative Commons Attribution 4.0 International License.

[Read Full License](#)

---

**Version of Record:** A version of this preprint was published on January 21st, 2021. See the published version at <https://doi.org/10.1186/s12889-021-10170-8>.

# Abstract

**Background** Human lymphatic filarial pathology is the main cause of disability and poverty among people living with the infection. The second goal of the Global Programme to Eliminate Lymphatic Filariasis (GPELF) is to manage the morbidity associated with the disease with the purpose of improving the quality of life of the patients. Consequently, the current study assessed the overall quality of life of lymphatic filariasis (LF) pathology patients in some selected endemic communities in rural Ghana.

**Method** In the present study, the Lymphatic Filariasis Quality of Life Questionnaire (LFSQQ) was used to evaluate the effect of lymphatic filariasis on the quality of life of people, with the disease in nine (9) communities in the Ahanta West District of the Western Region of Ghana where mass drug administration is being implemented for the past twenty years. Pearson's correlation, linear regression and one-way analysis of variance (ANOVA) analyses were used to assess the associations between the domains of LFSQQ instrument.

**Results** Of the 155 study participants recruited, 115 (74.19%) were females and 40 (25.81%) males. A greater proportion of the study participants (40, 25.8%) were presented with stage two (2) lymphedema while only 2 patients had stage seven (7) lymphedema. The average of the overall quality of life scores of study participants was 68.24. There was a negative Pearson correlation ( $r = -0.504$ ,  $p\text{-value} < 0.001$ ) between the stage of lymphedema (severity of the disease) and the quality of life of the LF patients. In addition, a clear pattern of positive correlation ( $r = 0.71$ ,  $p\text{-value} < 0.001$ ) was observed between the disease burden and pain/discomfort domains of the study participants. Whereas the highest domain specific score (85.03) was observed in the domain of self-care, we noted that the environmental domain, which consists of the financial status was the lowest (45.94) among the study participants.

**Conclusion** Our findings support previous works on the reduced quality of life among lymphatic filariasis patients with pathology. In this study, our results reveal a depressing financial condition among people presenting with late stages of LF pathologies, which eventually reduces their wellbeing.

## 1.0 Background

Lymphatic filariasis (LF) is an infection which directly impairs the lymphatics and consequently renders long-lasting disability to its victims<sup>1</sup>. LF is a mosquito-borne disease in which mosquitoes transmit the causative organisms (*Wuchereria bancrofti*, *Brugia timori* and *B. malayi* filarial worms)<sup>2</sup> to uninfected persons. The disease is endemic in 83 countries with majority of the cases reported in India, one third in Africa and the remaining cases in the Pacific, the Americas, South-East Asia and the Eastern Mediterranean regions<sup>3</sup>. In Ghana, bancroftian filariasis has been noted to be distributed in the northern guinea savannah and the southern coastal regions with a varied microfilaraemia prevalence of 0-20% as surveyed in 1994<sup>4</sup>. LF has varied form of manifestations such as hydrocele, lymphoedema and elephantiasis<sup>5</sup>. For instance, in highly endemic communities such as Kassena Nankana District (Upper East Region of Ghana) the prevalence of hydrocele and elephantiasis of the leg has been recorded to be

about 31% and 3.8%, respectively<sup>6</sup>. In addition, women are 10 times more likely than men to have lymphoedema of the leg<sup>7</sup>. This trend is still consistent in other neglected tropical diseases such as trachoma where female caregivers most often come in contact with infected children than their male counterparts and thus are higher risks of infecting themselves<sup>8</sup>. Individuals suffering from lymphatic filariasis experience repeated filarial attacks known as adenolymphangitis (ADL), which hinders patients from actively participating in both social and economic activities<sup>9-11</sup>. Krishna *et al*/2005, identified ADL as the primary cause of disabilities among LF patients<sup>12</sup>.

In line with the strategies of the Global Programme for Elimination of Lymphatic Filariasis (GPELF) to interrupt LF transmission in endemic areas, more than 890 million individuals have participated in the mass drug administration (MDA) programs in 37 countries as of 2017<sup>5</sup>. In Ghana, MDA was started in 2001 and had reached a national coverage in 2006. After 14 years of the annual treatment of MDA, 69 districts had achieved low transmission of the disease thus MDA was stopped for these districts, 29 districts still have persistent transmissions. The reason for the persistent transmission of the disease in such districts is not clear, however, in Tanzania a similar trend was observed and this was attributed to poor coverage of MDA and non-compliance to the medication by a section of the population. Nonetheless, the second component of LF elimination programme of forestalling and managing both acute and chronic disability among those already affected by disease have not achieved appreciable results. The idea of this strategy is to assist the 40 million people already affected by the disease and largely neglected, to have a better quality of life and to be capable of engaging fully in both economic and social activities.<sup>5</sup> Quality of Life is defined as an individual's perception of one's position in life in the context of value systems and culture, and in relation to one's goals, standards, expectations and concerns<sup>13</sup>. Thus, it is in this perspective that WHO defines health as being "not only the absence of disease and infirmity but also the complete state of physical, mental, and social well-being"<sup>14</sup>.

In order to ensure a better health-related quality of life of LF patients, the Morbidity Management and Disability Prevention (MMDP) of World Health Organization (WHO) enrolled a basic package of care. This package of care must be accessible to LF patients i.e. surgery for hydrocele, treatment for episodes of adenolymphangitis, management of lymphoedema to hinder episodes of adenolymphangitis and progression of disease<sup>15</sup>. To this end, GPELF initiated the Community Home-Based Care (CHBC) concept of reaching out to individuals with varying degree of morbidities to alleviate pain and prevent disease deterioration<sup>16</sup>. Thus, the purpose of this study was to assess the Quality of life of lymphatic filariasis patients in some selected LF hotspot communities in Ghana.

## 2.0 Methods

### 2.1 Study area

The study was carried out in the Ahanta West District of Western Ghana in nine (9) communities i.e. Akatakyi, Princess Town, Cape Three Points, Asemkow, Dixcove, Ampatano, Butre, Achowa and Busua.

The District is dotted with lush green hills and fertile soil with relative humidity as high as 85% in the rainy season and a little decline in humidity during the dry season. A bulk of the labour force in these villages is into activities such as fishing and farming. The study communities are lymphatic filariasis hotspots with *W. bancrofti* being the main causative organism and a microfilariae prevalence of about 20%<sup>17</sup>.

## 2.2 Study Design

A cross-sectional study was conducted between March 2019 and August 2019. Individuals clinically diagnosed with lymphatic filarial pathology (lymphoedema and/or hydrocele) were recruited for the study. In addition, the study participants were 18 years and above and willingly consented to the study. However, individuals presenting with any form swelling or edema other than filarial-related were excluded from the study. Experienced research scientists performed the leg staging of the study participants. The WHO seven-stage system for grading of lymphoedema was used as the standard for grading legs of the patients as previously described in<sup>9</sup>. The Committee of Human Research and Publications and Ethics, School of Medical Sciences and Dentistry, Kwame Nkrumah University of Science and Technology provided ethical clearance for this study.

## 2.3 Study Instrument

To assess the quality of life of the LF study participants, the Lymphatic Filariasis Quality of Life Questionnaires (LFSQQ) was used as described by Thomas, *et al.*, (2014)<sup>18</sup>. The LFSQQ was administered to the study participants in their local dialects (Fante and Nzema). The instrument measured the health-related quality of LF patients through a seven-domain system: mobility, self-care, daily/usual activities, disease burden, pain/discomfort, psychological health and social participation. However, for the purpose of this study, energy/fatigue, environment (which entails financial support from people in the community and safety in the neighborhood) and social relationship domains were included due to the extended family system which exist in most Ghanaian communities. Each item was scored on a 5-point scale (no problem, mild, moderate, severe, most severe). The total score was calculated based on the number of questions answered and the raw scores. Scores range from 0 to 100 with a higher score indicating a better quality of life described by Aggithaya, M.G *et al.*, 2013. In addition, the score range was further categorized arbitrary; (0-50) as low quality of life, (51-69) as moderate quality of life and (70-100) as high quality of life.

## 2.4 Statistical Analyses

Data were analyzed using the Epi-Info. To do this, the overall quality of life (QoL) response was calculated using the formula as described by Aggithaya, M.G *et al.*, 2013.

$$\text{Overall QoL} = \frac{\text{Total Scores}}{\text{Highest Score (5)} \times \text{Number of Questions Answered}} \times 100\%$$

The Domain score calculated using the formula,

$$\text{Domain Score} = \frac{\text{Total score on domain}}{\text{Highest Score (5)} \times \text{Number of Questions Answered}} \times 100\%$$

To determine the relationship between the LFSQQ domains of the study instruments, the Pearson Correlation analysis was performed. After that, linear regression analysis was done to examine the association between disease burden and the pain/discomfort domains. A one-way analysis of variance (ANOVA) was used to determine whether there was any statistical difference in the disease burden domain, psychological domain and environment domain. The proportion of the domain scores of study participants are given in percentages and mean. Any result with a p-value less than 0.05 was considered statistically significant.

## 3.0 Result

### 3.1 Demography of Study Participants

Taken together, 155 study participants were recruited. Three-quarters (115, 74.19%) of the study participants were females and the remaining (40, 25.81%) males. The mean age of the study participants was 52.84 (SD= 15.62) with the age range of (18-86). Majority of the study subjects (97, 62.58%) were involved in agrarian and/or fishing activities while occupations such as service workers, sales workers and professional related workers (5, 3.23%; 12, 7.74%; 2, 1.29%), respectively, was less common among the LF cohorts. Thirty-nine (39) of LF subjects representing 25.16% were unemployed as **Table 1**. A greater number of the LF patients (84, 54.19%) in this study had stage 2 lymphoedema (swelling not reversible overnight). The patients with stage 1 and stage 3 were 17 (10.98%) and 28 (18.06%), respectively. Two (2) of the study participants with stage 7 were incapacitated and could not care for themselves whereas the remaining were with other stages as shown in **Table 2**.

Table 1. Demography of Study Participants

<b>SEX</b>	n (%) <sup>a</sup>
Female	115 (74.19)
Male	40 (25.81)
<b>AGE</b>	
(mean±SD)	52.84±15.62 <b>95%CI</b> (50.34-55.33)
<b>Occupation</b>	
Agricultural/Fishman/Fishmonger/Farmer	97 (62.58)
Service workers	5 (3.23)
Sales workers	12 (7.74)
Professionals/Pensioner /teacher	2 (1.29)
Unemployed	39 (25.16)
<b>Community</b>	
Achowa	4 (2.58)
Akatakya	37 (23.87)
Ampatano	21 (13.55)
Asemkow	24 (15.48)
Busua	13 (8.39)
Butre	14 (9.03)
Cape 3 points	10 (6.45)
Dixcove	16 (10.32)
Princess Town	16 (10.32)

This table shows the various sections of the demography of the study participants with **CI** as Confidence interval, <sup>a</sup>Percentage (%) is the number (n) divided by 155 (total N).

Table 2. Clinical profile of the patients

Stages of Lymphoedema		n(%) <sup>a</sup>
1	Swelling reversible overnight	17(10.98)
2	Swelling not reversible overnight	84(54.19)
3	Shallow skin folds	28(18.06)
4	Skin knobs	6(3.87)
5	Deep skin folds	10(6.45)
6	Presence of “mossy lesions”	8(5.16)
7	Unable to care for self	2(1.29)

This table depicts the staging of the Lymphoedema of the study participants, <sup>a</sup>Percentage (%) is the number (n) divided by 155 (total N).

### 3.2 Quality of life Score of LFSQQ Domains among study participants

The average overall quality of life score among the LF cohort was 68.24 (SD = 9.76). Among the domains used in the study, LF pathology patients recorded the Environment domain as the lowest quality of life score (45.94), while self-care domain being the highest quality of life score (85.03). The Daily activities domain and Disease burden domain of the study instrument had a slight difference in their scores of 75.54 and 75.25, respectively. A similar trend was also observed between the Mobility domain and Pain/Discomfort domain (Figure 1).

In addition, over 80% of the study participants responded to not having “no problem with their ability to take care of themselves” (self-care) whereas over 50% of LF patients complained of severe to most severe effects of the disease on their work and also loss of strength or fatigue. In the Mobility domain, the study participants had severe problems when they sat and got out of a chair or standing for a long time. With regard to their daily activities, majority of LF patients (74%) did not have any challenge with cooking or cleaning the floors but they had difficulties in carrying out activities such as fishing or farming. Moreover, from the responses on the Social relationship domain, averagely 58% do not have any issue interacting with people, identifying a potential spouse or having the disease affecting their relationships with their family members or neighbors. The response on the Environment domain showed that 67% of respondents indicated little or no financial assistance when asked “how often do they get financial assistance from their relations due to their conditions”?

### 3.3 Quality of life Score of LFSQQ Domains in the Community Level

The nine (9) communities where the study was conducted had varied number of LF patients as shown in **Table 1**. To determine the overall quality score in the various LF endemic communities, a bar graph of the

overall quality score among the communities was done as demonstrated in the figure 2. The graph showed marginal changes in the overall quality of life scores of LF patients residing in the communities. However, Achowa community which had only four (4) LF patients were excluded from the analysis in order to give a more representative data. Moreover, considering that the Disease Burden Domain (DBD), Psychological Domain (PD) and Environment Domain (ED) were the lowest domains in the LFSSQ, a community-level distribution of these domains scores i.e. DBD, PD and ED were analyzed. As shown in (figure 3) there was generally a higher score in the DBD within the range 76-80 except for Dixcove where the DBD score of 66. A similar trend is also observed in ED and PD with the ranges of 41-53 and 56-63, respectively. However, to determine whether there was any statistical difference among the DBD, PD and ED in the communities, a one-way analysis of variance (ANOVA) was conducted, which showed statistical difference in these domains in the community ( $F(2,24) = 73.06$ ,  $p\text{-value} < 0.001$ ) as shown in **Table 3**. In addition, the overall quality score in the female and male was 68.42 and 67.61, respectively.

Table 3. One-Way Analysis of Variance (ANOVA) of Domain Score

	df	Sum_sq	Mean_sq	F	P-value
C (Domain score)	2	3870.888889	1935.444	73.06117	<0.001
Residuals	24	635.777778	26.49074		

### 3.4 Correlation of LF Responses on LFSSQ Domains

To determine the relationship among the various LFSSQ domains, we performed Pearson's correlation as illustrated in **Table 4**. The domains of pain/discomfort and disease burden were positively correlated with a Pearson's correlation coefficient of  $r=0.71$  and a  $p\text{-value} < 0.001$  as depicted in Figure 4. A number of the domains were moderately correlated with Pearson's correlation coefficient ( $r$ ) ranging from 0.60 – 0.66. The weakest correlation coefficient was observed between the domains of environment and pain/discomfort. Moreover, the linear regression model for the stage of LF (severity of the disease) and the overall quality of life score showed a negative regression with a Pearson's correlation coefficient ( $r=-0.504$ ) and  $p\text{-value} < 0.001$  (Figure 5). In addition, to predict how the stage of LF (severity of the disease) and the overall QoL of participants influence the gender outcome. We performed a logistic regression analysis using the sex of the study participants as the dependent variable ( $y$ ) and the stage of LF and overall QoL as the two independent variables ( $x$ ). The  $p\text{-values}$  of the stage of LF and the overall QoL as the two independent variables in the model were 0.015 and 0.419 respectively as shown in **Table 5**. Thus, the association between the dependent variable (Gender) and independent variable (stage of LF) is significant.



Table 4. Pearson's Correlation for the Domains of Quality of Life Scores LF Patients.

Variables	1	2	3	4	5	6	7	8	9
1. Mobility	-								
2. Daily Activities	0.62**	-							
3. Self-care	0.65**	0.60**	-						
4. Disease/ Burden	0.65**	0.56*	0.58*	-					
5. Pain/Discomfort	0.66**	0.50*	0.56*	0.71***	-				
6. Work/Fatigue	0.63**	0.62**	0.64**	0.63**	0.58*	-			
7. Psychological Health	0.43	0.41	0.50*	0.40	0.45	0.48	-		
8. Social Relationships	0.49	0.53*	0.54*	0.53*	0.46	0.56*	0.53*	-	
9. Environment	0.24	0.32	0.23	0.16	0.09	0.23	0.47	0.51*	-

\*\*\*Strong Correlation, \*\* Moderate Correlation and \*Weak Correlation.

Table 5. Logistic regression model for dependent variable Gender

Variable	coef	Std. Error	z	P>  z	[0.025	0.975]
const	3.2185	1.686	1.909	0.056	-0.087	6.524
QoL	-0.0168	0.021	-0.808	0.419	-0.058	0.024
Stage of LF	-0.3540	0.145	-2.436	0.015	-0.639	-0.069

## 4.0 Discussion

This is the first study to determine the general quality of life of lymphatic filariasis patients living in Ghana, even though a similar study has been conducted in India<sup>1</sup>. From our results, the overall mean QoL score for the LF subjects was 68.24, which is almost the same as the study conducted in India<sup>19</sup> at the baseline. Nevertheless, the quality of life of LF participants in this study was slightly lower than a previous study conducted in the urban area of Tiruchirappalli in India where an overall mean QoL score of 69.81<sup>1</sup> using the same LFSQQ instrument. Even though, a score of 100 is the highest quality of life, our study participants' overall QoL of 68.24 present a good quality of life. Notwithstanding, a higher QoL could be achieved if LF patients are taken through regular skin wash activities, exercises and other requisite hygienic practices. A six (6) months camp set up for LF patients in three endemic communities in Kerala province of India showed a significant upsurge in the QoL of the patients from 68.23 to 74.57<sup>19</sup>.

Moreover, more than half of our LF participants responded that they had no financial assistance from any relation. This was not surprising since the environment domain was observed to have the least domain QoL score. There are apparent reasons for such observations. First of all, the observation can be due to the dilapidating consequences of lymphatic filariasis on the patients, which rendered most of our study participants jobless or had reduced working days; making them wholly dependent on relatives and friends. This finding corroborates other result from this study where 29% of the respondents indicated that their condition had a negative effect on their ability to engage fully in economic activities. In addition, the stigma associated with the disease prevented some of the study participants from embarking on their jobs particularly those who were engaged in fish mongering and petty trading. The situation is further complicated as the LF usually affects poorer communities<sup>12,20</sup> where most LF patients' mainstay financial support (relatives and friends) is most often limited. This reason is corroborated by responses given by LF infected individuals in a different study conducted in Togo<sup>21</sup>. It is worth noting from our results that 78% of the respondents felt insecure in their routine life. Although the reason for this insecurity was not immediately clear from our study, this may be due to the accustomed dejection and infamy most individual who suffer neglected tropical disease face in their respective communities<sup>12</sup>.

A community-level analysis of the overall quality of life also revealed that the QoL score did not depend on which community the LF patients resided as it tends not to show any wide differences across the communities of study. This may be due to similar economic statuses of the patients across the communities which tend to be an upshot of the impact of LF disease which makes them to depend on peasant farming and/or fishing activities for their livelihood. An observed general pattern of the specific domains i.e. Psychological, Disease burden and Environment domains in LFSQQ across the communities also consolidate the impression that the LF patients in this study experienced almost the same impact of the infection irrespective of the community origin. Therefore, any intervention developed to alleviate the suffering and/or to increase the quality of life of LF patients can be generalized for all and possibly replicated in other similar settings.

The severity of the disease was defined by the stage of the lymphoedema. The worth of wellness of the study participants presenting the late stages of the infection was abysmal as the indicators observed declined in their overall mean QoL index. The negative Pearson's correlation ( $r = -0.504$ ,  $p\text{-value}=0.001$ ) between the severity of the disease and the quality of life of the study participant was in divergent with the positive correlation ( $r = 0.74$ ,  $p\text{-value} < 0.001$ ) of severity of disease and quality of life score in a different study<sup>1</sup>. Nevertheless, erstwhile study using modified Dermatology Life Quality index (mDLQI) also revealed that the severity of the filarial lymphoedema had a considerable negative repercussion on the QoL of the individuals<sup>22</sup>. A possible explanation for the negative effect of the stage of the lymphoedema on the quality of the respondents in our study may lie in the fact that as the swelling of their affected limbs worsened, the less productive they become and so a toiling effect on the wellbeing of LF patients. In addition, the stage of LF is in a close association with the Gender of the study participants using the logistic regression model ( $p\text{-value} = 0.015$ ).

For further analysis on how the disease impact the physical abilities of the LF participants, we used the mobility, daily activities, pain/discomfort and self-care domains in assessing this as used elsewhere<sup>12</sup>. The physical ability of LF participants have been widely reported to be hampered as compared to healthy individuals without the condition<sup>5,12,15,16</sup> and this was expected in this study. On the other hand, other studies<sup>1,19</sup> have also shown a higher level of self-care among LF patients which happen to corroborate with our current study where the self-care domain had the highest average QoL score of 85.03. This finding reflects the composition of our LF patients in the study where 36% of them are living with stage two (2) lymphoedema and as a result could still take care of themselves.

Mobility of LF patients is also considered a key factor in assessing the physical capabilities of the patients as the various manifestations of the disease (ADL, hydrocele, lymphoedema and elephantiasis). This situation has a cascading effects on the employment and income status of persons living with the condition<sup>23,24</sup>. Our study participants, however, averagely had mobility domain score of 68.86 which is comparatively higher to previous studies of 43.1<sup>20</sup>, 54.92 (baseline score)<sup>19</sup> and 52.32<sup>1</sup>. Nevertheless, this finding does not undermine the finding that 77% of the respondents had some form of difficulty in sitting and getting out of a chair or a challenge in walking a long distance. As an earlier study have also detailed the mobility of LF patients by using a 10 m walking test (10mWT) and a timed 'up and go' (TUG) test revealed LF patients were slower than controls (10WT: cases=0.828 m/s, controls = 1.104 m/s, TUG: cases =14.7s, controls =11.2s).

This study was conducted in the rural areas along the western coast of Ghana with a higher proportion of female participants. While this observation is not uncommon in LF endemic communities, care must be taken when the study's findings are generalized to other LF endemic communities particularly outside Ghana. As a previous study has posit women or girls to be more prone to neglected tropical diseases (NTD) which may due to higher poverty levels, higher illiteracy rates and lower social status<sup>8</sup>.

## 5.0 Conclusion

This study, carried in the LF hotspot communities in the Western Region of Ghana, shows a challenge in the quality of life of lymphatic filariasis patients as the result of the condition. Our findings also reveal financial and income difficulties among people suffering from LF, which eventually reduces their socio-economic wellbeing. We provide compelling evidence that there is the need for relevant governmental and non-governmental stakeholders, including the Ministry for Gender and Social Protection of Ghana, to integrate some social intervention programs for people living with LF conditions in endemic regions to improve their wellbeing. We believe the study will inform policy about the management LF in Ghana.

## List Of Abbreviations

GPELF - Global Programme to Eliminate lymphatic filariasis

LF - Lymphatic Filariasis

LFSQQ – Lymphatic Filariasis Quality of life Questionnaire

ANOVA – Analysis of Variance

ADL – Adenolymphangitis

MDA – Mass Drug Administration

MMDP – Morbidity Management and Disability Prevention

CHBC – Community Home-Base Care

QoL- Quality of Life

DBD – Disease Burden Domain

PD – Psychological Domain

ED – Environment Domain

WT – Walking Test

TUG – Timed 'Up and Go'

## **Declarations**

### **Ethical Approval and Consent to participate**

The study was approved (CHRPE/AP/209/19) by the Committee of Human Research, Publications and Ethics, School of Medical Sciences and Dentistry, Kwame Nkrumah University of Science and Technology, KNUST, Kumasi, Ghana. Approval was also sought from Municipal Health Directorates at the Ahanta Nkwanta, Western Region, Ghana. The study protocols were explained to the participants and all participants consented to the study by signing or thumb printing the informed consent forms

### **Consent for Publication**

Not Applicable

### **Availability of data and materials**

Not Applicable

### **Competing Interest**

The authors declare no conflict of interest.

### **Funding**

AK holds an award from ARNTD-SGP III.

## Authors' contributions

AK conceived the idea, SOA collected the data from the field and conducted the statistical analyses and drafted the manuscript, AK, BF, EKAA, PK and BCA assisted in the field work and edited paper. JBF also read the manuscript critically and equaled edited it. All authors approved the final version of this article

## Acknowledgements

The authors would like to thank Mr. Samuel Dodge, The Disease Control Officer at the Dixcove Hospital in the Ahanta West Health Directorate for his immense contribution to this study.

## Authors' Details

<sup>1</sup>Kumasi Centre for Collaborative Research in Tropical Medicine, Kwame Nkrumah University of Science and Technology, Kumasi-Ghana

<sup>2</sup>Department of Biochemistry and Biotechnology, Kwame Nkrumah University of Science and Technology, Kumasi, Ghana

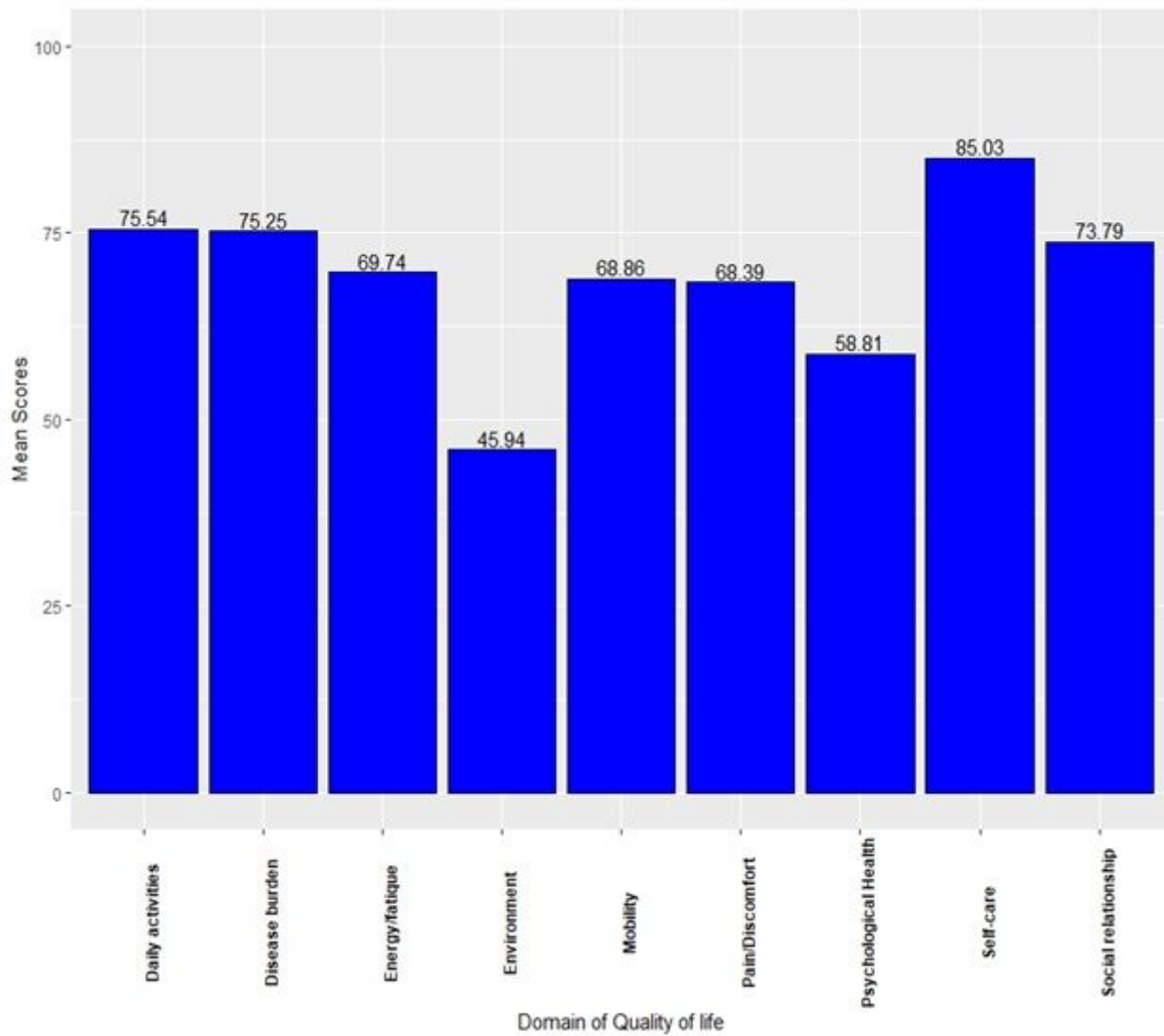
<sup>3</sup>Department of Sociology and Social Work, Kwame Nkrumah University of Science and Technology, Kumasi, Ghana

## Reference

1. Hemalatha, K. & V, R. P. Impact of Lymphatic Filariasis on Quality of Life of Affected Individuals: A Community Based Cross Sectional Survey. **6**, 13–18 (2016).
2. Streit, T. & Lafontant, J. G. Eliminating lymphatic filariasis: A view from the field. *Ann. N. Y. Acad. Sci.* **1136**, 53–63 (2008).
3. World Health Organization (WHO). *Lymphatic filariasis: progress of disability Filariose lymphatique: compte rendu des activités de prévention des incapacités.* (2004).
4. Gyapong, J. Descriptive epidemiology of lymphatic filariasis in Ghana. 26–30 (1996).
5. Programme, T. G., Filariasis, E. L. & Programme, L. Weekly epidemiological record Relevé épidémiologique hebdomadaire. 589–604 (2018).
6. Gyapong JO, Badu JK, Adjei S, B. F. Bancroftian filariasis in the Kassena Nankana District of the upper east region of Ghana: a preliminary study. *J Trop Med Hyg.* **96**, 317-322. (1993).
7. Lammie, P. J. *et al.* Heterogeneity in Filarial-Specific Immune Responsiveness among Patients with Lymphatic Obstruction. *J. Infect. Dis.* **167**, 1178–1183 (1993).
8. Wharton-Smith, A. *et al.* Gender-related factors affecting health seeking for neglected tropical diseases: findings from a qualitative study in Ethiopia. *PLoS Negl. Trop. Dis.* **13**, e0007840 (2019).

9. Kwarteng, A. *et al.* Influence of seasonal variation on reported filarial attacks among people living with lymphoedema in Ghana. 1–7 (2019). doi:10.1186/s12879-019-4084-2
10. McPherson, T. *et al.* Interdigital lesions and frequency of acute dermatolymphangioadenitis in lymphoedema in a filariasis-endemic area. *Br. J. Dermatol.* **154**, 933–941 (2006).
11. Dai, M. *et al.* Dermal Structure in Lymphoedema Patients with History of Acute Dermatolymphangioadenitis Evaluated by Histogram Analysis of Ultrasonography Findings: A Case-Control Study. *Lymphat. Res. Biol.* **14**, 2–7 (2016).
12. Kumari, A. K., Harichandrakumar, K. T., Das, L. K. & Krishnamoorthy, K. Physical and psychosocial burden due to lymphatic filariasis as perceived by patients and medical experts. *Trop. Med. Int. Heal.* **10**, 567–573 (2005).
13. Bernstein, U. Study of behaviour in wear and wear life of shirts-an example from practical textile testing. **41**, (1972).
14. WHO. WHO definition of Health, Preamble to the Constitution of the World Health Organization. in *International Health Conference NY* 19–22 (1946).
15. WHO. *Lymphatic Filariasis: Managing Morbidity and Preventing Disability World Health Organization an Aide-Mémoire for National Programme Managers.* (2013).
16. World Health Organization (WHO). *Weekly epidemiological record.* (2004).
17. Dunyo, S. K. *et al.* Lymphatic filariasis on the coast of Ghana. *Trans. R. Soc. Trop. Med. Hyg.* **90**, 634–638 (1996).
18. Thomas, C. *et al.* Comparison of Three Quality of Life Instruments in Lymphatic Filariasis: DLQI, WHODAS 2.0, and LFSQQ. *PLoS Negl. Trop. Dis.* **8**, 19–21 (2014).
19. Aggithaya, M. G. *et al.* Self care integrative treatment demonstrated in rural community setting improves health related quality of life of lymphatic filariasis patients in endemic villages. *Acta Trop.* **126**, 198–204 (2013).
20. Stanton, M. C. *et al.* Measuring the physical and economic impact of filarial lymphoedema in Chikwawa district, Malawi: A case-control study. *Infect. Dis. Poverty* **6**, 1–9 (2017).
21. Richard, S. A., Mathieu, E., Addiss, D. G. & Sodahlon, Y. K. A survey of treatment practices and burden of lymphoedema in Togo. *Trans. R. Soc. Trop. Med. Hyg.* **101**, 391–397 (2007).
22. Chandrasena, T. G. A. N., Premaratna, R., Muthugala, M. A. R. V, Pathmeswaran, A. & de Silva, N. R. Modified Dermatology Life Quality Index as a measure of quality of life in patients with filarial lymphoedema. *Trans. R. Soc. Trop. Med. Hyg.* **101**, 245–249 (2007).
23. Coreil, J., Mayard, G., Louis-Charles, J. & Addiss, D. Filarial elephantiasis among Haitian women: Social context and behavioural factors in treatment. *Trop. Med. Int. Heal.* **3**, 467–473 (1998).
24. Perera, M., Whitehead, M., Molyneux, D., Weerasooriya, M. & Gunatilleke, G. Neglected patients with a neglected disease? A qualitative study of lymphatic filariasis. *PLoS Negl. Trop. Dis.* **1**, (2007).

## Figures



**Figure 1**

Bar Chart depicting the mean quality life scores of LF patients for each Domain.

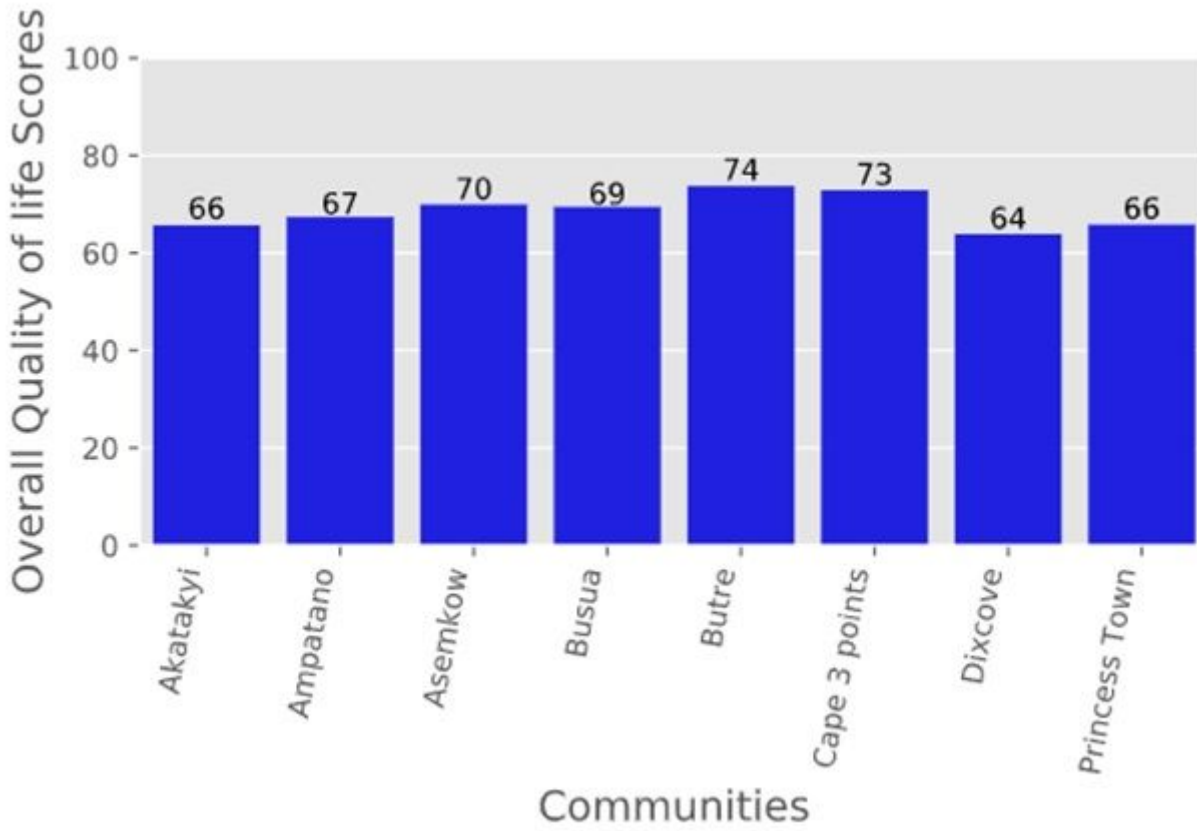
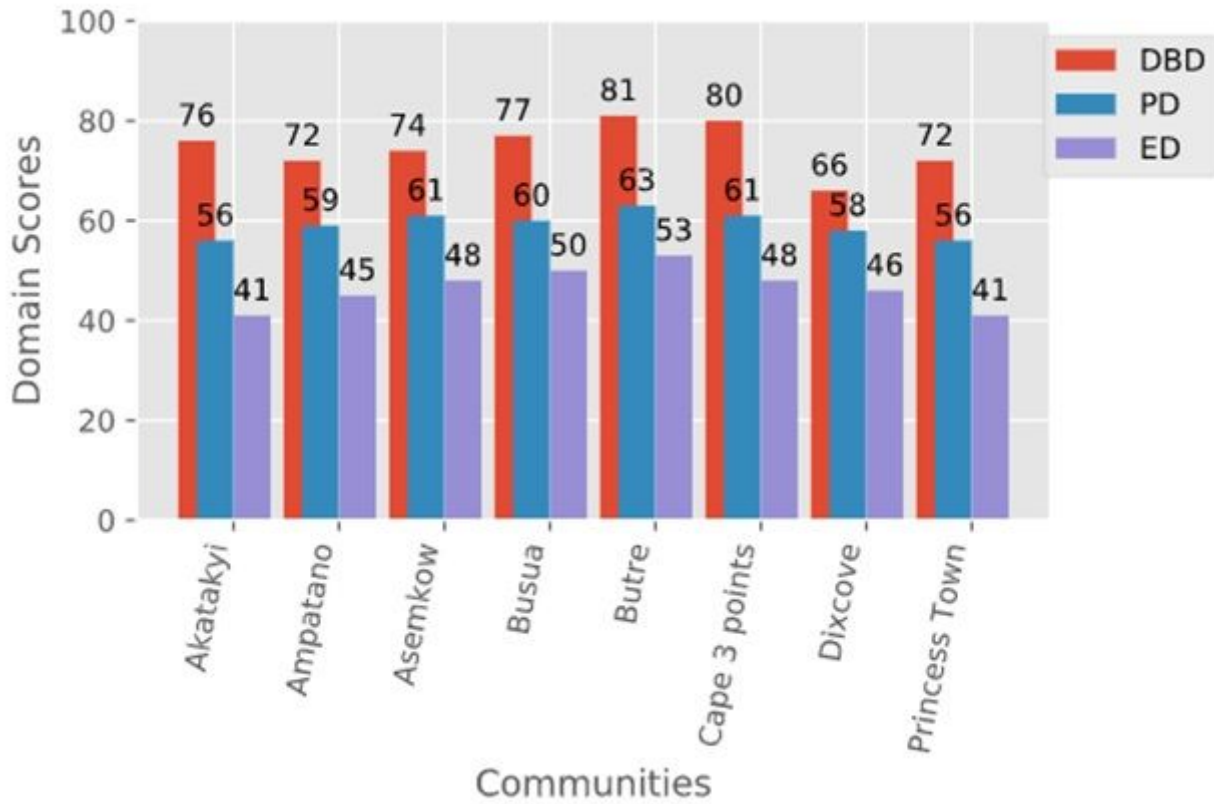


Figure 2

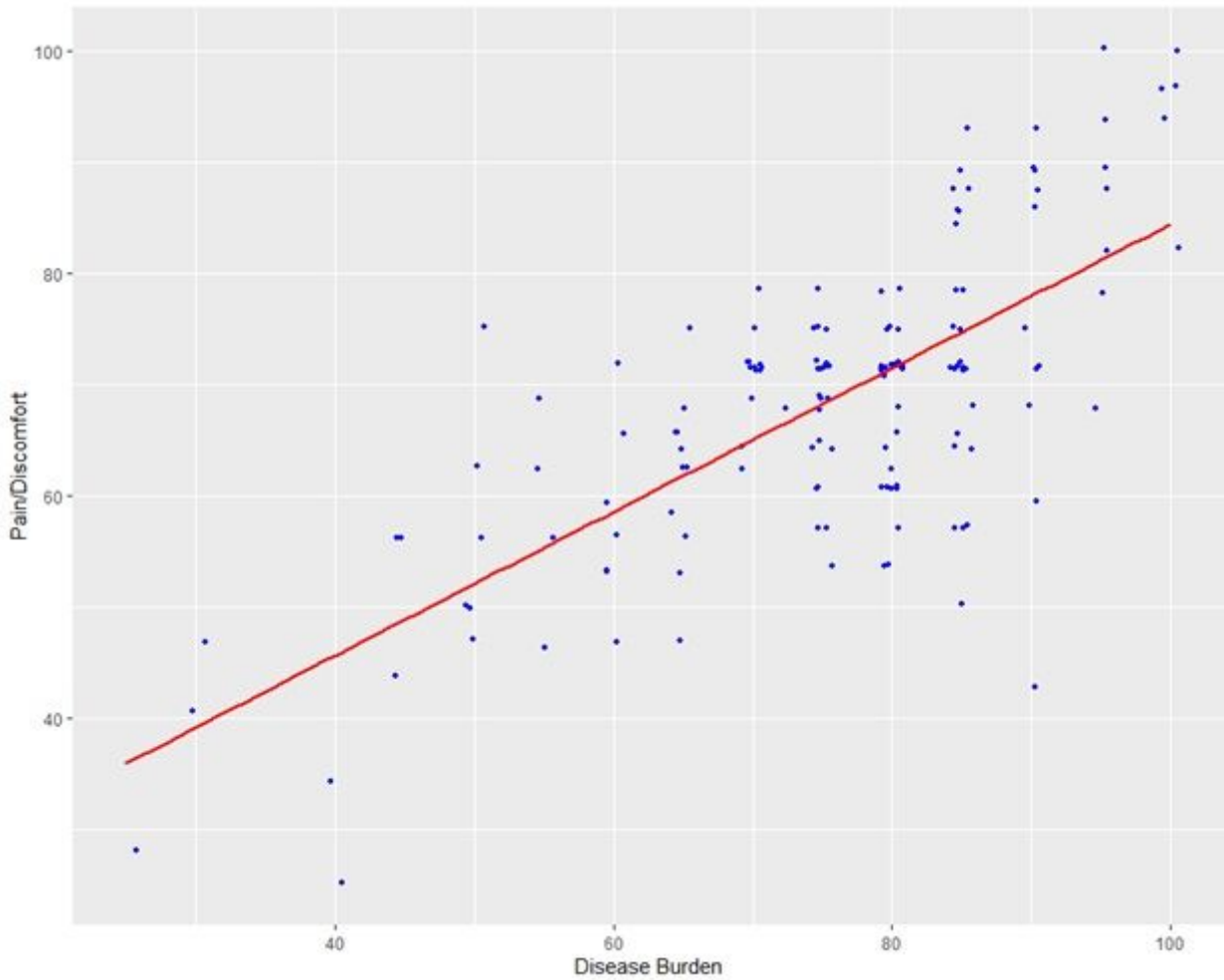
The Overall Quality Life Scores in the Communities





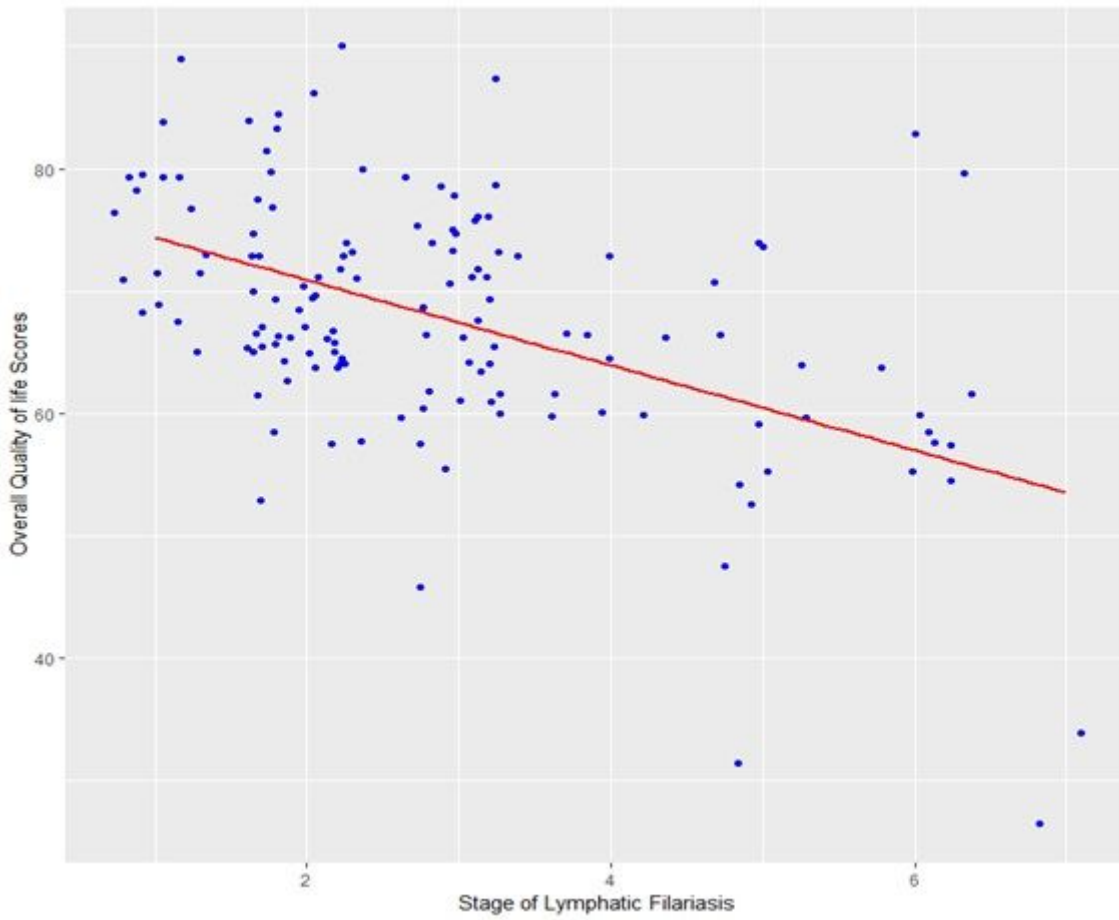
**Figure 3**

The Distribution of Domains Scores in the Community. This graph shows the domains scores of DBD, PD and ED in the community of study. The bar value represents the domain scores for DBD, PD and ED for each of the study community. The scores range from 0 to 100 with a higher score indicating a better quality of life. \*DBD: Disease Burden Disease, \* PD: Psychological Domain, \*ED: Environment Domain.



**Figure 4**

The Correlation result between the Disease Burden and Pain/Discomfort Domains. The graph shows a positive Pearson's correlation ( $r = 0.71$ ,  $p\text{-value} < 0.001$ ) between the Pain/Discomfort domain and Disease burden domain.



**Figure 5**

The correlation result of the severity of disease and overall Quality of Life Scores. The graph depicts a negative linear regression between the overall quality of life score and the stage of LF (severity of disease) with a Pearson's correlation coefficient ( $r$ ) of -0.504.