

The efficacy and safety of Shenzhu Guanxin Recipe Granules for treatment of patients with coronary artery disease: protocol for a double-blind, randomized controlled trial

xiao jin (✉ 449189625@qq.com)

Guangzhou University of Chinese Medicine <https://orcid.org/0000-0002-4676-1062>

Huanlin Wu

Beijing University of Chinese Medicine

Bingxin Wu

Guangzhou University of Chinese Medicine

Yukai Li

Guangdong Provincial Hospital of Chinese Medicine

Xia Wang

Guangdong Hospital of Traditional Chinese Medicine

Guoqing Liu

Guangdong Provincial Hospital of Traditional Chinese Medicine

Xiaoqing Dang

Guangdong provincial Hospital of Traditional Chinese Medicine

Danping Xu

Guangdong Provincial hospital of Traditional Chinese Medicine

Study protocol

Keywords: Coronary artery disease, traditional Chinese herbal, randomized controlled trial, intermediate coronary lesions

Posted Date: February 22nd, 2019

DOI: <https://doi.org/10.21203/rs.2.402/v1>

License:   This work is licensed under a Creative Commons Attribution 4.0 International License.

[Read Full License](#)

Version of Record: A version of this preprint was published on August 20th, 2019. See the published version at <https://doi.org/10.1186/s13063-019-3629-4>.

Abstract

Background Coronary artery disease (CAD) is one of the most common types of the cardiovascular diseases, previous pilot trials suggested that Traditional Chinese Medicine brought clinical benefits for patients with CAD. We will conduct this trial to determine the efficacy and safety of Shenzhu Guanxin Recipe Granules for treatment of patients with coronary artery disease. **Patients and Methods** This randomized controlled trial recruited 190 patients who were diagnosed CAD by clinical manifestations and examinations, in which coronary computed tomography angiography (CCTA) showed 50-70% of stenosis, with soft or mixed plaque. The included participants were randomly assigned to the case group and control group with a 1:1 allocation ratio; patients in the case group received SGR and usual care, and those in the control group received placebo (6 g/day for 6 months) and usual care. The endpoint of the study included calcium coverage score (CCS), C-Reactive protein (CRP), and the levels of blood lipids, tumor necrosis factor- α (TNF- α), interleukin-1 (IL-1), interleukin-6 (IL-6), and ATP-binding membrane cassette transporter A1 (ABCA1) were calculated before recruiting at 6th month. The indicators were Seattle Angina Questionnaire (SAQ) and TCM syndrome questionnaire scores at 0th, 3rd, and 6th months. **Discussion** This clinical trial may provide a reliable evidence regarding the clinical effectiveness and safety of SGR therapy for patients with CAD by clinical manifestations and examinations, in which coronary computed tomography angiography (CCTA) showed 50-70% of stenosis, with soft or mixed plaque.

Introduction

Coronary artery disease (CAD) is one of the most common types of the [cardiovascular diseases](#) [1], resulting in over 9.5 million deaths worldwide [2], that has remarkably increased globally from 5.2 million deaths in 1990 [3]. Intermediate coronary lesions (ICL), which was defined by luminal narrowing with a diameter stenosis of 40-70%, continues to be a therapeutic dilemma for cardiologists [4]. Although previous studies have indicated that diameter stenosis of 40-70% has been used as indication for percutaneous coronary intervention (PCI), however, the treatment of ICL has still remained controversial [5 6]. In non-left main lesions, the guideline published by the American College of Cardiology (ACC)/American Heart Association (AHA) for PCI recommended $\geq 70\%$ stenosis as the criterion for significant stenosis [7], while the guideline released by European Society of Cardiology expressed 50% stenosis with documented ischemia as the criterion for revascularization. Consequently, recruitment of a conservative treatment or aggressive revascularization strategy to perform PCI is still a main challenge for patients with ICL.

Regarding the possible side effects of PCI, some patients with ICL select a conservative treatment strategy. In addition, drugs play an important role in the conservative treatment of ICL. Although antiplatelet therapy and anticoagulation therapy are cornerstones for treating coronary heart disease (CHD) [8], however, traditional Chinese herbal products possess several benefits for patients with CHD, especially the relief of clinical symptoms [9-11]. Based on the theory of traditional Chinese medicine (TCM), CHD belongs to the category of "chest pain" and "heart pain" in TCM, which was mainly caused by

“Qi stagnation”, “blood stasis” and “phlegm turbidity”. Shenzhu Guanxin Recipe Granules (SGR), a traditional Chinese herbal product, including Radix Ginseng, Rhizoma Atractylodis, Radix Notoginseng, Rhizoma Pinelliae, Hirudo medicinalis, Radix Panacis quinquefolium, and Folium Nelumbinis, have been proved to accelerate blood circulation, enhance qi, and eliminate intravascular phlegm, all playing critical roles in pathogenesis and progress of CAD in traditional Chinese medicine (TCM) [12 13]. A previous study revealed that SGR was effective and safe to improve Seattle Angina Questionnaire (SAQ) and Chinese medicine (CM) symptom scores, and decrease adverse events, such as death, restenosis and other emergency cases in patients receiving a standard Western medicine treatment after PCI in southern China [13].

Based on previous clinical and experimental evidences, we hypothesized that SGR may provide an alternative therapeutic strategy for patients with ICL who prefer to receive a conservative treatment in lieu of an aggressive revascularization strategy. Therefore, we performed a multicenter, randomized, double-blind, placebo parallel controlled clinical trial to further investigate the efficacy of the mentioned treatment strategy.

Methods And Outcomes

Patients and Methods

This study mainly investigated the curative effects and possible mechanism of SGR on CAD patients. In this study, patients with CAD were randomly assigned to the case group and control group; the patients in case group received SGR, and those in the control group received placebo twice-daily for 6 months. As soon as the patients were recruited to the trial, they underwent laboratory examinations and fulfilling SAQ. The laboratory examinations mainly included alanine amino transferase (ALT), aspartate amino transferase (AST), blood urea nitrogen (BUN), serum creatinine level, and blood lipids. The patients were followed-up for 12 months with repeated questionnaires for every 3 months. At 6 months follow-up, the participants underwent repeated laboratory examinations, including coronary computed tomography angiography (CCTA). At the beginning of the study, all patients signed informed consent forms, which were informed about the risks and benefits of the treatment strategy. A flow diagram of the trial is shown in Figure1.

Inclusion and Exclusion Criteria

The inclusion criteria were as follows: (1) the age of the subjects should be over 18 and less than 75 years old; (2) living in Guangdong province for long-time (total duration of residency > 3 years, annual duration of residency > 9 months); (3) patients were aware of the study and agreed to sign informed consent forms; (4) patients had been diagnosed with CAD by clinical manifestations

and examinations, and CCTA showed 50-70% of coronary atherosclerotic stenosis, with soft plaque or mixed plaque; (5) the patients did not undergo PCI surgery and coronary artery bypass grafting (CABG); (6) Phlegm and blood stasis syndrome (PBSS) due to syndrome of qi deficiency. Syndrome

differentiation will be determined by two qualified TCM cardiologists dependently according to diagnostic criteria for TCM differentiation (Table1).

The exclusion criteria were as follows: (1) patients were complicated with other serious diseases, including malignant tumor, severe infection, and other significant life-limiting comorbidities; (2) pregnant and lactating women and those allergic to TCM; (3) poor compliance, and failure to visit regularly; (4) Valvular heart disease; (5) patients with congenital metabolic abnormalities or immune diseases.

Dropout criteria

The included patients have the right to stop treatment and withdraw from the research project for any reason at any time, and the reason why they want to quit the research project will be recorded

in their CRF. Participants who do not complete the research project with the following reasons should be considered as dropped out. (1) The patient chooses to quit the research project. (2) loss to

follow-up. (3) Poor compliance. (4) The participant develops another severe disease that needs to be treated during the study.

Recruitment Strategies

In order to recruit patients, advertisements were placed in a broad range of media outlets, including the flyers within the hospital, as well as website of Chinese Clinical Trial Registry. Patients who were interested in the trial received information about the study. Each potential participant was informed that the participation is fully voluntary and refuse to participate in the research has no negative effect on their treatment. Those who would like to join the study were later assessed to determine whether they meet the inclusion criteria or not.

Randomization and Blinding

A random number generator in SAS 6.12 software (SAS Institute, Cary, NC, USA) was used to generate a random number in a 1:1 randomization ratio by DME (Design, Measurement, and Evaluation in Clinical Research) Center of Guangzhou University of Chinese Medicine (Guangzhou, China). The research team members, except for the clinical research methodology personnel, will be blinded to the treatment and the group assignment. Participants were informed about the information of case group and control group, while were not told their group assignment, thereby allowing blinding of the participants between the treatment groups. Both the SGR and placebo granule were manufactured by the Jiangyin Tianjiang Pharmaceutical Co., Ltd. (Jiangyin, China), and the placebo was identical compared with SGR in color, size, shape, and taste. The study code will not be revealed until the end of the study, unless there is a serious adverse event (AE).

Intervention

After a recruitment period prior to baseline assessment, the included participants were randomized to the case group and control group, in which the patients in case group received SGR and those in the control group received placebo (6 g/day for 6 months). Simultaneously, the included patients also received usual care according to patients' conditions, including aspirin, clopidogrel, angiotensin converting enzyme inhibitors or beta-blockers, calcium channel blockers, and nitrate esters irrespective of the initial randomization assignment. All the treatments were under the responsibility of physicians according to the clinical guidelines. Study medication (including both placebo and SGR) will be dispensed by the Hospital Central Pharmacy as a set of boxes at the beginning of each study month. In order to check the compliance of patients, the patient was asked to bring the box back. The treatment prescriptions and conditions of patients were recorded in the case form. Details of study procedures of the trial are given in Table 2.

Outcome measures

Before starting the intervention, at 3 months intervention, after completing the intervention (6 months after treatment), and 1 year intervention, all the patients had to complete a questionnaire related to quality of life. Additionally, all the patients underwent laboratory examinations and CCTA at baseline (prior to starting either intervention) and at 6 months follow-up. During the follow-up period, any enrolled participants who were unable to continue the study during the treatment remained in their randomized group to perform intention-to-treat (ITT) analysis.

Primary outcomes

The primary endpoint of the study was CCTA, that mainly included calcium coverage score (CCS). CCS represents the percentage of coronary arteries affected by calcific plaque, which was detected with cardiac CT (CCT). CCS has been shown to be reliable, reproducible, and predictive of cardiovascular risk, and also was highly associated with the risk of CAD[14-16]. A study revealed that a twofold increase in CCS was associated with a 34% ($P=0.001$) increase in the risk of a hard CAD event, in addition to a 52% ($P=0.001$) increase in the risk of any CAD event [17].

Secondary outcomes

Secondary outcomes were as follows: (1) concentration of ATP-binding membrane cassette transporter A1 (ABCA1), tumor necrosis factor- α (TNF- α), interleukin-1 (IL-1), and interleukin-6 (IL-6); (2) the level of serum lipids; (3) the level of high sensitivity C-reactive protein (CRP); (4) the SAQ score; (5) scores of CM symptoms; (6) evaluation of the occurrence and composite of major adverse cardiac events (MACE). The SAQ was used to assess the patients' quality of life from five aspects, i.e. the level of limitation of physical activity, steady-state angina pectoris, condition of angina pectoris attacks, satisfaction level of treatments, and cognition level of disease (DP)[18]. The scores of CM symptoms included the following aspects: chest pain, sense of suppression in the chest, attack inducement, and shortness of breath, fatigue, palpation, and spontaneous perspiration [19] (Table 3).

Follow-up protocol

The first follow-up was carried out at 3 months after receiving treatment, and the patients' health condition was assessed by inspecting medical records, which were acquired by completing the case report form. The second follow-up was undertaken at 6 months after receiving treatment, in which the eligible participants underwent CCTA and laboratory examinations, and the researchers also needed to assess the participants' physical conditions according to the SAQ scores and scores of TCM syndrome questionnaire. The third follow-up was performed at 12 months, the eligible participants had to complete SAQ and TCM syndrome questionnaire.

Adverse events (AEs)

All drugs may have side effects or allergic reactions, although no adverse reactions of SGR have been reported yet. Any discomforts or unexpected situations that happen during the experiment period were taken as AEs into account regardless of whether they are related to the study intervention or not. All the AEs were recorded in case report form in detail. Serious AEs, including death, life-threatening or severely or permanently disabling events, were immediately reported to the principal investigator. The ethics committee assessed whether an AE was related to the experimental drug or not.

Data management

To ensure strict adherence to the study protocol and familiarity with the trial administration process, an independent committee will be formed by the principal research members prior to the beginning of the study. Data management personnel of the committee should be qualified, effectively trained and familiar with the functions of data management. A designated person is responsible for the data management of this clinical trial. When the patients are recruited to the research project, the demographic and baseline characteristic data will be collected by researchers. A standard case report form was used to collect data. Before start of recording, data were de-identified. Clinical outcomes, the results of SAQ, TCM syndrome questionnaire, adverse events, and the reasons why participants drop out of the study will be recorded in detail on case report forms (CRFs). In order to decrease errors, data of the CRFs will be entered by two researchers independently. They will check each other's input values and only the consistent data can they be stored in the database. Paper files were kept in a locked filing cabinet in the hospital. With respect to the electronic documents, the results of laboratory tests and CCTA were stored on a password-protected computer, and access was restricted only to the principal investigator.

Determination of the sample size

The calculation of sample size was undertaken based on the results of our pilot study. We hypothesized that the expected difference in the primary outcome (coronary artery calcification score) between the SGR group and placebo group was estimated to be 10%. Based on a statistical power of 90% and a two-sided test size of a level of 5%, a sample size of 82 eligible cases needed to be recruited in the case group and control group. As there was a dropout rate of 15% within 6 months, 190 participants were eventually recruited.

Statistical analysis

All data analysis will be conducted by qualified statisticians in a double-blind manner according to the intention-to-treat principle. The database will be built by EpiData 3.1 software. In this study, SPSS 22.0 software (IBM, Armonk, NY, USA) was used to perform statistical analysis. Continuous variables were expressed as mean \pm standard deviation (SD) or median, and categorical variables were reported as numbers and percentages. Student's t-test was used for making comparison between the two groups as well. Besides, one-way analysis of variance (ANOVA) was applied for making comparison between the groups. Pearson's chi-squared test was applied to sets of categorical data to evaluate how likely it is that any observed difference between the sets arose by chance. P-value < 0.05 was considered statistically significant.

Discussion

Although the treatment of CAD has remarkably advanced, the treatment of ICL has still remained controversial. Chinese herbs had been proved to have definite curative effects on CAD and gradually attracted scholars' attention in clinical trials[20-22]. Furthermore, SGR had been proved to be effective for patients with angina pectoris after PCI, and it can also upregulate the expression of platelet/endothelial cell adhesion molecule-1 (PECAM-1)/CD31 and vascular endothelial growth factor (VEGF), thereby promoting myocardium angiogenesis in myocardial infarction rats [23]. In this study, we attempted to further investigate the efficacy and safety of SGR in patients with ICL, in which CCS was used as an indicator to evaluate the efficacy. Blood profile was associated with atherosclerosis, which was one of the most important risk factors of CAD. The serum concentration of high-density lipoprotein-cholesterol (HDL-C) was detected as a strong, independent and inverse predictor of atherosclerotic cardiovascular disease (ASCVD), in particular, CAD [24 25]. Genes had been proved to be associated with the serum concentration of HDL-C, including ABCA1, which can modulate the concentration of HDL-C and catalyze the transfer of lipids from various tissues and cells to apolipoprotein A-I (apo A-I)[26 27]. In this trial, in order to further reveal whether SGR can affect the metabolism of blood lipids, the concentration ABCA1 was also calculated in addition to the concentration of blood lipids.

Numerous studies have reported a relationship between the elevated levels of circulating inflammatory markers and adverse cardiovascular events [28]. TNF- α induces the production of IL-6, that can activate hepatocyte production of CRP [29]. Among myriads of inflammatory markers, CRP was found as a valuable biomarker in refining risk assessment [30 31]. In the present clinical trial, the influence of SGR on inflammatory markers, such as TNF- α , IL-1, IL-6, and CRP were assessed as well.

This study not only evaluated the efficacy and safety of SGR therapy for patients with ICL, but also discussed the potential mechanisms of SGR for the treatment of CAD. To minimize bias of the trial, a rigorous set of methods were conducted, including randomization, in which the blinding method and statistical analysis were carried out according to the ITT.

There are some limitations in this study. Firstly, although we recruited patients with PBSS due to qi deficiency, however, this Chinese medicine syndrome can dynamically change after the intervention. Secondly, the calculation of sample size was based on a pilot study and clinical observations, in which a larger sample size may result in different achievements.

In summary, the present study has provided a solid foundation for the clinical treatment of CAD, in which further evidence can be achieved regarding the application of TCM for the treatment of CAD.

Declarations

Trial status

This research has been registered on Chinese Clinical Trial Registry (No. ChiCTR19000205

01), and the first patient in this trial was enrolled on 1 January 2015. The trial has already enrolled participants: 50 patients have been recruited, and 40 patients had completed. The recruitment will be completed by 12 December 2019.

Ethics approval and consent to participate

This study was approved by the Ethics Committee of the Guangdong Provincial Hospital of Traditional Chinese Medicine (Guangzhou, China) (Approval No. B2016-042-01), and we will not begin recruiting at other centers in the trial until local ethical approval has been obtained". All patients were informed about the risks and benefits of the treatment strategy and signed informed consent forms at the beginning of the study.

Funding

This project was funded by Special Research Project of Lingnan Traditional Chinese Medicine School of Guangdong Provincial Hospital of Traditional Chinese Medicine (NO. YN2014LN07), Guangzhou Science and Technology Plan project (No. 201710010107), Guangdong Provincial Science and Technology Plan (No.2016A020226011), Joint Innovation Specific Project in Key Areas from Guangdong Branch Institute of China Academy of Chinese Medical Sciences (No. ZZ0908065).

Availability of data and materials

Data sharing is not applicable to this article because no datasets were generated or analyzed during the study

Competing interests

The authors declare that they have no competing interests.

Consent for publication Not applicable.

Authors' contributions

XJ drafted the manuscript and participated in designing the trial. DPX planned the protocol and revised the manuscript. BXW and YKL recruited and screened eligible patients in the inpatient department. XJD was responsible for generating and distributing the random numbers. GQL participated in designing the outcome measurements and assessing the outcomes. HLW participated in assessing treatment efficacy and collected clinical data. XW was the study coordinator. All the authors have read and approved the final manuscript.

Acknowledgements: Not Applicable

Abbreviations

CAD: coronary artery disease; TCM: traditional Chinese medicine; PCI: percutaneous coronary intervention; SGR: Shenzhu Guanxin Recipe Granules; TCM: traditional Chinese medicine; SAQ: Seattle Angina Questionnaires; ITT: intention-to-treat; CABG: coronary artery bypass grafting; CCS: calcium coverage score, CRP: C-Reactive protein; MACE: major adverse cardiac events; ANOVA: analysis of variance; HDL-C: high-density lipoprotein-cholesterol; CCTA: coronary computed tomography angiography; ABCA1: ATP-binding membrane cassette transporter A1; TNF- α : tumor necrosis factor- α .

References

1. Naghavi MWHL: **Global, regional, and national age-sex specific mortality for 264 causes of death, 1980-2016: a systematic analysis for the Global Burden of Disease Study 2016.** *Lancet* 2017, **390**(10100):1151-1210.
2. Zhu KF, Wang YM, Zhu JZ, Zhou QY, Wang NF: **National prevalence of coronary heart disease and its relationship with human development index: A systematic review.** *Eur J Prev Cardiol* 2016, **23**(5):530-543.
3. Lozano R NM, Foreman K, Lim S, Shibuya K, Aboyans V, Abraham J, Adair T, Aggarwal R, Ahn SY, et al. : **Global and regional mortality from 235 causes of death for 20 age groups in 1990 and 2010: a systematic analysis for the Global Burden of Disease Study 2010.** *Lancet* 2012, **380**(9859):2095–2128.
4. Hensel KL, Carnes MS, Stoll ST: **Pregnancy Research on Osteopathic Manipulation Optimizing Treatment Effects: The PROMOTE Study Protocol.** *The Journal of the American Osteopathic Association* 2016, **116**(11):716-724.
5. Pim A.L. Tonino MD, Bernard De Bruyne, M.D., Ph.D., Nico H.J. Pijls, M.D., Ph.D., Uwe Siebert, M.D., M.P.H., Sc.D., Fumiaki Ikeno, M.D., Marcel van 't Veer, M.Sc., Volker Klauss, M.D., Ph.D., Ganesh Manoharan, M.D., Thomas Engstrøm, M.D., Ph.D., Keith G. Oldroyd, M.D., Peter N. Ver Lee, M.D., Philip A. MacCarthy, M.D., Ph.D., and William F. Fearon, M.D: **Fractional Flow Reserve versus Angiography for Guiding Percutaneous Coronary Intervention.** *The new england journal of medicine* 2009, **360**(3):213-224.

6. Patrick W. Serruys MD, Ph.D., Marie-Claude Morice, M.D., A. Pieter Kappetein, M.D., Ph.D., Antonio Colombo, M.D., David R. Holmes, M.D., Michael J. Mack, M.D., Elisabeth Stähle, M.D., Ted E. Feldman MD, Marcel van den Brand, M.D., Eric J. Bass, B.A., Nic Van Dyck, R.N., Katrin Leadley, M.D., Keith D. Dawkins, M.D., and Friedrich W. Mohr, M.D., Ph.D: **Percutaneous Coronary Intervention versus Coronary-Artery Bypass Grafting for Severe Coronary Artery Disease.** *N Engl J Med* 2009, **360**:961-972.

7. Glenn N. Levine M, FACC, FAHA, Chair†; Eric R. Bates, MD, FACC, FAHA, FSCAI, Vice Chair*†; James C. Blankenship, MD, FACC, FAHA, FSCAI, Vice Chair*†; Steven R. Bailey, MD, FACC, FSCAI*†; John A. Bittl, MD, FACC†; Bojan Cercek, MD, FACC, FAHA†; Charles E. Chambers, MD, FACC, FSCAI†; Stephen G. Ellis, MD, FACC*†; Robert A. Guyton, MD, FACC§; Steven M. Hollenberg, MD, FACC*†; Umesh N. Khot, MD, FACC*†; Richard A. Lange, MD, FACC, FAHA†; Laura Mauri, MD, MSc, FACC, FSCAI*†; Roxana Mehran, MD, FACC, FAHA, FSCAI*†; Issam D. Moussa, MD, FACC, FAHA, FSCAI†; Debabrata Mukherjee, MD, FACC, FAHA, FSCAI†; Henry H. Ting, MD, FACC, FAHA†: **2015 ACC/AHA/SCAI Focused Update on Primary Percutaneous Coronary Intervention for Patients With ST-Elevation Myocardial Infarction: An Update of the 2011 ACCF/AHA/SCAI Guideline for Percutaneous Coronary Intervention and the 2013 ACCF/AHA Guideline for the Management of ST-Elevation Myocardial Infarction A Report of the American College of Cardiology/American Heart Association Task Force on Clinical Practice Guidelines and the Society for Cardiovascular Angiography and Interventions.** *circulation* 2016, **133**:1135-1147.

8. Dewilde WJ OT, Verheugt FW, Kelder JC, De Smet BJ, Herrman JP: **Use of clopidogrel with or without aspirin in patients taking oral anticoagulant therapy and undergoing percutaneous coronary intervention:: an open-label, randomised, controlled trial.** *Lancet* 2013, **381**:1107-1115.

9. Qiu Y, Xu H, Shi D: **Traditional Chinese Herbal Products for Coronary Heart Disease: An Overview of Cochrane Reviews.** *Evidence-Based Complementary and Alternative Medicine* 2012.

10. Mao S WL, Ouyang W, Zhou Y, Qi J, Guo L: **Danlou Tablets alleviate adverse left ventricular remodeling after myocardial infarction: results of a double-blind, randomized, placebo-controlled, pilot study.** *BMC Complement Altern Med* 2016, **16**:447.

11. Yu L QY, Wang Q, Zhang L, Liu Y, Wang T, et al: **The efficacy and safety of Chinese herbal medicine, Rhodiola formulation in treating ischemic heart disease: a systematic review and meta-analysis of randomized controlled trials.** *Complement Ther Med* 2014, **22**:814-825.

12. Xu D WX, Sheng X, Lin Y, Li S, Zheng C: **Doubleblind, randomized, controlled clinical trial of Shenzhu Guanxin Prescription for treatment of stable angina due to coronary heart disease.** *J Guangzhou Univ Tradit Chin Med(Chin)* 2014, **31**:173-182.

13. Xu DP, Wu HL, Lan TH, Wang X, Sheng XG, Lin Y, Li S, Zheng CY: **Effect of Shenzhu Guanxin Recipe () on patients with angina pectoris after percutaneous coronary intervention: A prospective, randomized**

controlled trial. *Chinese journal of integrative medicine* 2015, **21**(6):408-416.

14. Greenland P LL, Azen SP, Doherty TM, Detrano RC. : **Coronary artery calcium score combined with Framingham score for**

risk prediction in asymptomatic individuals. *JAMA* 2004, **291**(2):210–215.

15. Arad Y GK, Roth M, NewsteinD, Guerci AD: **Coronary calcification, coronary disease risk factors, C-reactive protein, and atherosclerotic cardiovascular disease events: the St Francis Heart Study.** *J Am Coll Cardiol* 2005, **46**(1):158 –165.

16. Taylor AJ BJ, Feuerstein I, Cao F,Brazaitis M, O. : **Malley PG. Coronary calcium independently predicts incident premature coronary heart disease over measured cardiovascular risk factors: mean 3-year outcomes in the Prospective Army Coronary**

Calcium (PACC) Project. *J Am Coll Cardiol* 2005, **46**(5):807–814.

17. Elizabeth R. Brown SRAK, PhD David A. Bluemke, MD, PhD Alan D. Guerci, MD J. Jeffrey Carr, MD, Jonathan Goldin PRD, MD: **Coronary Calcium Coverage Score: Determination, Correlates, and Predictive Accuracy in the MultiEthnic Study of Atherosclerosis.** *Radiology* 2008, **247**:669-678.

18. Spertus JA WJ, Dewhurst TA, Deyo RA, Prodzinski J, McDonell M, et al: **Development and evaluation of the Seattle Angina Questionnaire: a new functional status measure for coronary artery disease.** *J Am Coll Cardiol* 1995, **25**:333-341.

19. Wu HL RX, Luo WJ, Ou AH, Yang XB, Chen KJ, et al.: **Cluster analysis on TCM syndromes in 319 coronary artery disease patients for establishment of syndrome diagnostic figure.** *Chin J Integr Tradit West Med (Chin)* 2007, **27**:616-618.

20. Gao ZY, Xu H, Shi DZ, Wen C, Liu BY: **Analysis on outcome of 5284 patients with coronary artery disease: the role of integrative medicine.** *Journal of ethnopharmacology* 2012, **141**(2):578-583.

21. Guo D, Murdoch CE, Liu T, Qu J, Jiao S, Wang Y, Wang W, Chen X: **Therapeutic Angiogenesis of Chinese Herbal Medicines in Ischemic Heart Disease: A Review.** *Frontiers in pharmacology* 2018, **9**:428.

22. Yuan R, Shi WL, Xin QQ, Chen KJ, Cong WH: **Holistic Regulation of Angiogenesis with Chinese Herbal Medicines as a New Option for Coronary Artery Disease.** *Evidence-based complementary and alternative medicine : eCAM* 2018, **2018**:3725962.

23. Xu DP, Zou DZ, Qiu HL, Wu HL: **Traditional Chinese Medicine ShenZhuGuanXin Granules Mitigate Cardiac Dysfunction and Promote Myocardium Angiogenesis in Myocardial Infarction Rats by Upregulating PECAM-1/CD31 and VEGF Expression.** *Evidence-based complementary and alternative medicine : eCAM* 2017, **2017**:5261729.

24. Scanu AM EC: **HDL: bridging past and present with a look at the future.** *FASEB J* 2008, **22**:4044-4054.

25. Lamarche B DJ, Moorjani S, Cantin B,Dagenais GR, Lupien PJ. . **Triglycerides and HDLcholesterol as risk factors for ischemic heart disease. Results from the Québec cardiovascular study.** *Atherosclerosis* 1996, **119**:235-245.

26. Guay SP, Brisson D, Munger J, Lamarche B, Gaudet D, Bouchard L: **ABCA1 gene promoter DNA methylation is associated with HDL particle profile and coronary artery disease in familial hypercholesterolemia.** *Epigenetics* 2012, **7**(5):464-472.

27. Ghaznavi H, Mahmoodi K, Soltanpour MS: **A preliminary study of the association between the ABCA1 gene promoter DNA methylation and coronary artery disease risk.** *Molecular biology research communications* 2018, **7**(2):59-65.

28. Tong DC, Whitbourn R, MacIsaac A, Wilson A, Burns A, Palmer S, Layland J: **High-Sensitivity C-Reactive Protein Is a Predictor of Coronary Microvascular Dysfunction in Patients with Ischemic Heart Disease.** *Frontiers in cardiovascular medicine* 2017, **4**:81.

29. Cwikiel J, Seljeflot I, Berge E, Njerve IU, Ulsaker H, Arnesen H, Flaa A: **Effect of strenuous exercise on mediators of inflammation in patients with coronary artery disease.** *Cytokine* 2018, **105**:17-22.

30. Ridker PM CC, Morrow D, Rifai N, Rose LM, McCabe CH, et al.: **C-reactive protein levels and outcomes afer statin therapy.** *N Engl J Med* 2005, **352**:20–28.

31. Ridker PM RN, Rose L, Buring JE, Cook NR.: **Comparison of C-reactive protein and low-density lipoprotein cholesterol levels in the prediction of frst cardiovascular events.** *N Engl J Med* 2002, **347**:1557–1565.

Tables

Table 1. Diagnostic criteria of TCM syndromes

Diagnostic criteria of TCM syndromes

main symptoms	1.chest pain 2. sense of suppression in the chest The included patients need to have one of the main symptoms.
qi deficiency syndrome	1.palpitation and shortness of breath 2. fatigue 3. spontaneous sweating 4. pale complexion 5. pale tongue 6. corpulent tender tongue with indentation in margin of the tongue 7. weak pulse The included patients need to have two or more of the above symptoms.
blood stasis syndrome	1.dark purple lips, complexions or claws 2.purple, dark or bruised tongue 3.enlarged sublingual venation 4.uneven pulse The included patients need to have two or more of the above symptoms.
phlegmy turbidity syndrome	1.being overweight 2. Thick and greasy tongue 3.slippery pulse The included patients need to have two or more of the above symptoms.

Table 2. Study Procedures of the Trial

	Study procedures	Baseline	Treatment period	Follow-up period	
	time point	0	3-month	6-month	12-month
	outcome measures				
	clinical data	√			
	Coronary artery CT	√		√	
	CRP	√		√	
Therapeutic evaluation	Blood lipids	√		√	
	SAQ	√	√	√	√
	scores of CM symptoms	√	√	√	√
	ALT, AST	√		√	
	creatinine, serum urea nitrogen	√		√	
Safety indicators	blood glucose	√		√	
	drug Interaction	√	√	√	√
	adverse event		√	√	√
	compliance observation		√	√	√
	medicine treatment	√	√	√	√

Note: CRP= C reactive protein, SAQ =The Seattle Angina Questionnaire, CM=Chinese medicine, ALT= alanine aminotransferase, AST=aspartate aminotransferase.

Table 3. Primary and Secondary Outcomes

Primary endpoints	Coronary artery calcification score, Change of area of non-calcified plaque, and the proportion of non-calcified plaques to total plaques
Secondary endpoints	1. Concentration of gene ABCA1 and TNF-, IL-1, IL-6
	2. Level of serum lipids
	3. Level of high sensitivity C-Reactive protein (CRP)
	4. Seattle Angina Questionnaire (SAQ) score
	5. Change of Traditional Chinese Medicine (TCM) syndrome
	6. Evaluation of occurrence and composite of major adverse cardiac events (MACE)

Note: ATP-binding membrane cassette transporter A1 (ABCA1), TNF- α = tumor necrosis factor- α (TNF- α), IL-1= interleukin-1 (IL-1), IL-6= interleukin-6

Figures

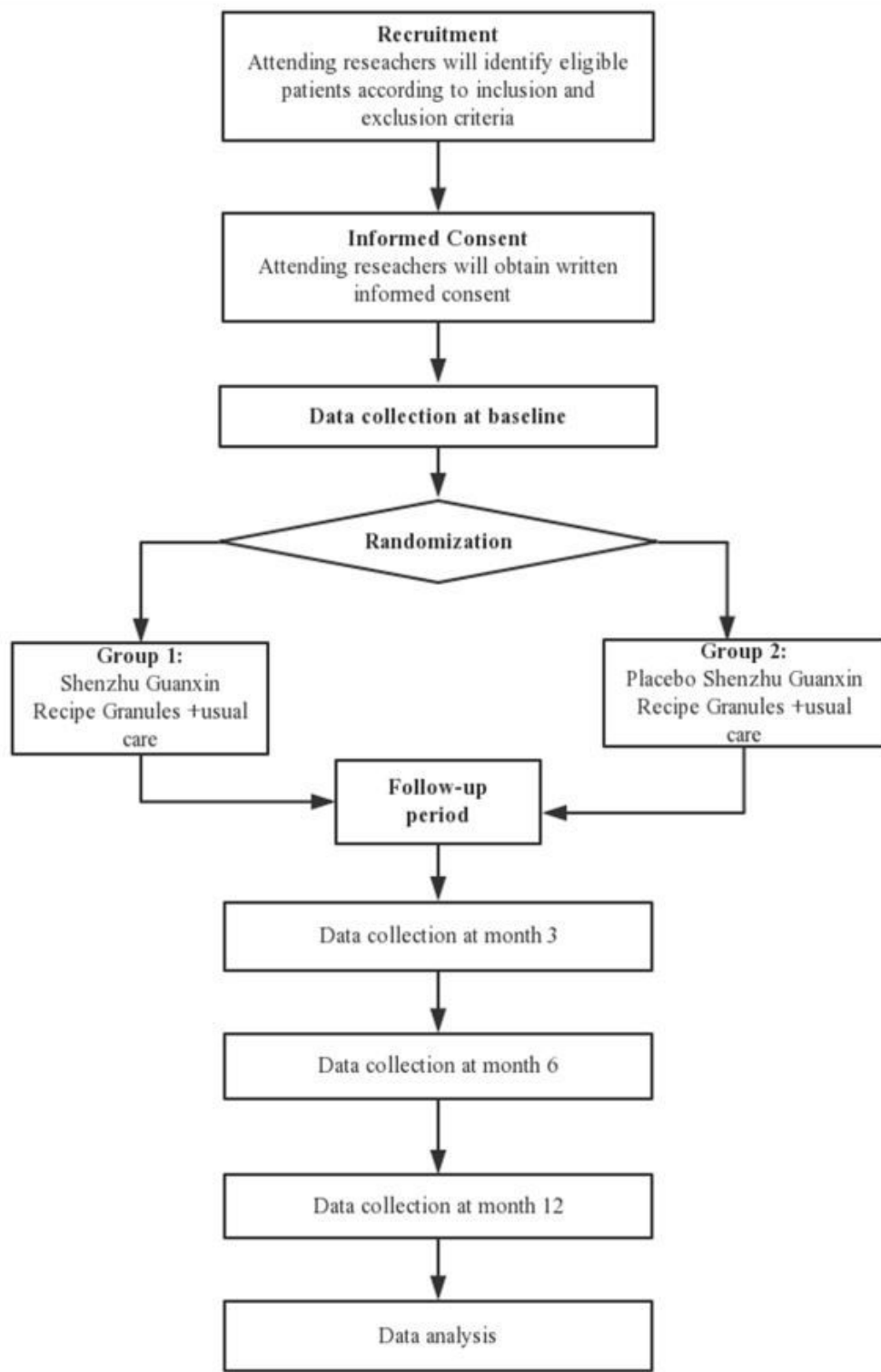


Figure 1

Flow diagram of the trial

Supplementary Files

This is a list of supplementary files associated with this preprint. Click to download.

- [supplement1.doc](#)