

# Evaluating a Web- and Telephone-based Personalised Exercise Intervention for Individuals Living With Metastatic Prostate Cancer (Exerciseguide): Protocol for a Pilot Randomised Controlled Trial

**Holly EL Evans**

The University of Adelaide <https://orcid.org/0000-0003-4593-8839>

**Cynthia C Forbes**

University of Hull

**Daniel A Galvão**

Edith Cowan University

**Corneel Vandelanotte**

Central Queensland University

**Robert U Newton**

Edith Cowan University

**Gary Wittert**

The University of Adelaide

**Suzanne Chambers**

University of Technology

**Andrew D Vincent**

The University of Adelaide

**Ganessan Kichenadasse**

Flinders Centre for Innovation in Cancer

**Nicholas Brook**

The University of Adelaide

**Danielle Girard**

University of South Australia

**Camille E Short** (✉ [camille.short@unimelb.edu.au](mailto:camille.short@unimelb.edu.au))

Melbourne School of Psychological Sciences and Melbourne School of Health Sciences, University of Melbourne <https://orcid.org/0000-0002-4177-4251>

---

Study Protocol

**Keywords:** Exercise, metastatic prostate cancer, behavioural change, eHealth, computer-tailoring, aerobic, resistance training

**Posted Date:** July 2nd, 2020

**DOI:** <https://doi.org/10.21203/rs.3.rs-39183/v1>

**License:** © ⓘ This work is licensed under a Creative Commons Attribution 4.0 International License.

[Read Full License](#)

---

**Version of Record:** A version of this preprint was published on January 11th, 2021. See the published version at <https://doi.org/10.1186/s40814-020-00763-2>.

# Abstract

## Introduction:

Preliminary research has shown the effectiveness of supervised exercise-based interventions in alleviating sequela resulting from metastatic prostate cancer. Despite this, many individuals do not engage in sufficient exercise to gain the benefits. There are many barriers which limit the uptake of face-to-face exercise in this population including lack of suitable facilities, remoteness, access to experts, significant fatigue, urinary incontinence, and motivation. Technology-enabled interventions offer a distance-based alternative. This protocol describes a pilot two-armed randomised controlled study that will investigate the feasibility and preliminary efficacy of an online exercise and behavioural change tool (ExerciseGuide) among individuals with metastatic prostate cancer.

## Methods:

Sixty-six participants with histologically diagnosed metastatic prostate cancer will be randomised into either the eight-week intervention or a wait-list control. The intervention arm will have access to a tailored website, remote supervision, and three tele-coaching sessions to enhance support and adherence. Algorithms will individually prescribe resistance and aerobic exercise based upon factors such as metastasis location, pain, fatigue, confidence, and current exercise levels. Behavioural change strategies and education on exercise benefits, safety and lifestyle are also tailored through the website. The primary outcome will be intervention feasibility (safety, usability, acceptability, adherence). Secondary exploratory outcomes include changes in physical activity, quality of life, sleep, and physical function. Outcomes will be measured at baseline and week 9.

## Discussion:

The study aims to determine the potential feasibility of an online remotely-monitored exercise intervention developed for individuals with metastatic prostate cancer. If feasible, this pilot intervention will inform the design and implementation of further distance-based interventions.

**Trial registration:** ANZCTR, ACTRN12614001268639. Registered 10<sup>th</sup> December 2018, <https://anzctr.org.au/ACTRN12618001979246.aspx>

## Introduction

Prostate cancer is one of the most common cancers diagnosed among men worldwide (1). Of those diagnosed, approximately 10–20% will present with metastatic disease at the time of diagnosis, and an additional one in five will progress from localised to metastatic disease despite treatment (2, 3). Once prostate cancer has metastasized, the five year survival rate drops from 95–36% (4). Metastatic disease and the subsequent treatments cause considerable physical and psychological burden (5). Androgen deprivation therapy, radiotherapy and chemotherapy can result in increased fat mass, fatigue, and pain

as well as reduced muscle mass, bone mineral density, physical function, and sexual function (2, 6). In addition, over 80% of individuals with advanced prostate cancer will develop bone metastases, which can result in significant bone pain, pathological fractures, and neurological impairments (5). Individuals in this population have also been found to exhibit higher levels of anxiety and depression than their age matched peers, including men diagnosed with localized prostate cancer (7–9). Given the high burden, there is a clear need to develop interventions that help combat side effects, improve physical function, and reduce overall burden in individuals with metastatic prostate cancer.

Research has demonstrated the beneficial effects from physical activity and more specifically, structured exercise interventions in individuals with prostate cancer (10, 11). Currently, it has been suggested that exercise can play an important role in symptom management, rehabilitation, and long term survival (5, 10, 11). While the physiological mechanisms behind this are yet to be elucidated, it is hypothesised that exercise improves immune function, modulates circulating factors (such as insulin and growth factors), reduces inflammation, and improves treatment efficacy (5). However, until recently, those with metastatic disease were discouraged from structured exercise for fear of exacerbation of symptoms or increased risk of skeletal-related events (12).

New evidence is now available to show that supervised multi-modal exercise can be safe, feasible, and clinically relevant in individuals with metastatic prostate cancer (12–15). Cormie et al. were the first to show that resistance training is both safe (no adverse events found) and tolerable (attendance 83% and compliance 93%) in this population using a pilot study (12). Galvão et al. then implemented a multi-modal (resistance, aerobic and flexibility training) intervention and found significant improvements in physical function (mean difference 3.2 points; 95% confidence interval (CI)=[0.4, 6.0]; P = 0.028) and muscular strength (mean difference of 6.6 kg (95% CI=[0.6, 12.7]; P = 0.033) after twelve weeks (14). Currently, the Movember GAP4 INTERVAL trial is examining overall survival in individuals completing a vigorous intensity face-to-face multi-modal exercise program (16).

Despite the mounting evidence regarding the benefits of supervised multimodal exercise for this population, many do not engage in sufficient physical activity to obtain health benefits. Zopf et al. found that only 20% of patients achieved 50–149 min per week of self-rated moderate to vigorous aerobic activity, and 29% of patients achieved  $\geq 150$  minutes (17, 18). This is despite evidence that 92% of individuals with advanced cancer being interested in becoming more active (19). Barriers to exercise in this population include general exercise barriers such as the lack of suitable facilities, remoteness, motivation, and access to experts, as well as disease-specific barriers such as significant fatigue, urinary incontinence, mood, high levels of other medical commitments, and lack of education regarding exercise for individuals with prostate cancer (8, 20). It is currently unknown how many Australian individuals with metastatic prostate cancer receive individualised exercise advice.

Home-based exercise programs offer a feasible alternative to counteract some of the obstacles to on-site exercise interventions because they may be able to reduce location constraints, financial, and time limitations (21, 22). However, current research indicates that these interventions produce smaller effect

sizes in cancer populations on both quality of life and physical function when compared to face-to-face exercise (10, 23). Lack of supervision and personalised support, reduced intervention adherence, and limited individualisation are all possible causes of this discrepancy (10, 24, 25).

The use of technology in distance-based health care, otherwise known as eHealth, may help to improve the capacity of distance-based programs. For example, web-based platforms have the ability to prescribe and demonstrate tailored exercise plans, provide tailored behavioural change advice, facilitate self-monitoring, and support communication with health care professionals. Much of this can be achieved in an automated fashion using computer-tailoring techniques, thus allowing for personalization at a low-cost (26). Reviews of digital health interventions for behaviour change suggest that some level of human support is important for efficacy (27, 28). E-Health interventions utilizing some of these techniques to support prostate, colorectal, breast, and leukemia cancer populations have already been trialed with good effects in terms of improved physical activity levels and reduced sedentary behaviour (24, 29–32). However, the extent to which these techniques are acceptable, safe and potentially effective for supporting individuals with metastatic prostate cancer, given their unique needs and risk profile, is unknown. Our study seeks to address this gap by conducting a pilot evaluation of ExerciseGuide, a web-based and telephone supported personalised exercise intervention designed for individuals living with metastatic prostate cancer.

The primary objective of the trial is to assess key areas of uncertainty regarding the use of ExerciseGuide (and other similar programs) in future practice and research, including issues relating to feasibility, safety and potential for efficacy. Publication of this protocol aims to ensure transparency around pre-specified criterion for success, aid replication of study and intervention methods, and inform interested parties of the upcoming trial results.

## Methods

### Study design

This study is a two-arm pilot randomized control trial with participants randomised into either the intervention group (8 weeks) or a wait-list control group. Mixed evaluation methods will be used, with main outcomes assessed using questionnaires and accelerometers at baseline and post-intervention, and via a qualitative interview at post-intervention only. A sub-group of participants will be invited to complete physical function testing at baseline and post-intervention.

The trial has been prospectively registered on the Australian New Zealand Clinical Trials Registry (<http://www.anzctr.org.au>): ACTRN12614001268639, and ethical clearance was obtained by the University of Adelaide Research Ethics Committee (H-2018-153). To aid replication, study materials, such as the participant information sheet and data request forms from physicians, are available via the open science framework (<https://osf.io/jfmy2/>). The reporting of the study protocol is in accordance with the

Standard Protocol Items: Recommendations for Interventional Trials (SPIRIT) guidelines (33). The SPIRIT figure outlining the time procedure is shown Fig. 1.

## **Pre-established criteria**

Feasibility of conducting a larger-scale evaluation will be interpreted based on the following:

1. The recruitment goal has been reached.
2. Behaviour change data are collected for  $\geq 75\%$  of participants.
3. Physical functioning data (collected on a subset of participants) can be collected for  $\geq 75\%$  of participants that: a) reside within 30 km from a study testing site and b) are invited to complete testing.

The success of the intervention will be interpreted based on the following:

1. The acceptability of the intervention is satisfactory (score of  $\geq 20$  on the client satisfaction questionnaire (34)).
2. The software usability is satisfactory (score of  $\geq 68$  on the software usability scale (35);
3. There are no grade 3+/life threatening or severe adverse events attributed to participating in the intervention using the Common Terminology Criteria for Adverse Events V.5.0 grading criteria.
4. There is evidence of meaningful participation in either aerobic activity and or resistance-based activity in the intervention group relative to the wait-list control. As the exercise prescription will be personalised, it is difficult to specify an average cut-point, however we anticipate a between-group difference of at least 30 minutes of aerobic activity and/or one session of resistance training.

The trial team will determine if progression to a larger scale evaluation is warranted based on the criteria and will work together to revise aspects of the protocol if problem areas are identified (e.g., if recruitment is slow the study may still progress if additional recruitment sites can be secured). The process evaluation will be used to inform improvements to the intervention if usability, acceptability, or potential for efficacy issues are identified.

## **Study setting**

This study is being conducted in Australia. Due to the distance-based nature participants can live anywhere in the country providing they meet the eligibility criteria. Recruitment began in February 2020 and will continue for a minimum of 10 months, unless the desired sample size is reached beforehand.

## **Participants and screening**

Participants are being recruited via a variety of methods. This includes dissemination of study information to potential participants via intermediaries (e.g., support groups, urologists, oncologists, nurses, Freemasons Foundation Centre for Men's Health, Prostate Cancer Foundation Australia), social media advertisements (e.g., on twitter and Facebook), and direct contact (e.g., presentations to consumer groups). Recruitment through cancer outcome registries and public health services will be used if

recruitment is slow. Interested individuals are referred to the project coordinator (HE) to confirm eligibility, obtain informed consent and clearances and arrange outcome assessments. Figure 2 outlines the participant flow diagram.

To be eligible, participants must have been diagnosed with metastatic prostate cancer (as confirmed by their physician) and have medical clearance from their physician (General Practitioner, Medical Oncologist, Radiation Oncologist or Urologist). Physicians are required to provide details regarding the extent and location of metastases. Participants also need to have access to a computer with the internet, be able to read and write in English and provide written consent prior to baseline testing. Finally, to be eligible participants should not already engage in two sessions of resistance-training and 60 minutes of structured moderate-vigorous aerobic exercise per week. Participants meeting one target but not the other will be eligible.

Patients will be deemed ineligible if they have any absolute contraindications to performing moderate physical activity (resistance, aerobic and flexibility) for at least 20 minutes (in bouts of 5 minutes), up to two days of the week. This includes no recent serious cardiovascular events (within 12 months), unstable bone metastases, spinal compressions, or acute illness and infection (36). Participants will also be excluded from the study if they have moderate to severe bone pain (Common Terminology Criteria for Adverse Events V.5.0 grading criteria).

Participant retention strategies will include flexible scheduling for telehealth consultations, reminder calls/texts, and consistent study staff. Criteria for discontinuing intervention include participant request and worsening conditions which are absolute contraindications to exercise (including unstable bone metastasis, spinal compression, and significant cardiovascular events). Concomitant care will be permitted during the study and any changes in treatment will be recorded.

## **Randomisation**

Once baseline data has been collected, participants will be randomised into the intervention group or the control group at a ratio of 1:1. The study statistician (AV) will generate the random computer-generated random number sequence in random block sizes of length 2 and 4, and will be blinded to identifying information. Stratification will occur based on age ( $\leq 65$  years,  $> 65$  years of age) and differences in physical function as determined by the EORTC QLC-30 ( $\leq 80$ ,  $> 80$ ). This is to control for potential confounders relating to age (including confidence using technology) and physical capacity. Participants will not be blinded to the primary goal of the project (evaluation of web-based tool in this population) but will not be informed of the pre-specified criteria for success.

## **Exercise Guide Intervention**

## **Intervention Development**

Development of the intervention (ExerciseGuide) was guided by the Intervention Mapping protocol (37), which involves a needs assessment, identification of determinants of the desired intervention outcomes,

and the selection of theory-based and evidence-informed strategies to target key determinants or change objectives. The process was undertaken predominantly by HE and CS, in collaboration with consumer representatives, hence drawing on expertise in exercise prescription, behaviour change, and the lived experience of prostate cancer. An overview of the development process, including original research conducted and theories considered is described below.

In brief, a qualitative interview study (N = 18) was completed to better understand the needs and preferences of individuals in this population. This was conducted alongside a systematic review of online interventions for prostate cancer patients to determine feasibility, acceptability and efficacy, as well as factors associated with success (or failure) (38). These studies highlighted that online supportive care interventions are acceptable in individuals with prostate cancer. Participants within the qualitative study stressed the importance of individualised exercise prescription, the need for evidence-based educational content, support and feedback to aid adherence. Importantly, participant's accuracy of reporting metastasis location and extent was mixed, indicating further reporting measures would be required to ensure appropriate prescription.

The selection of theory to guide intervention development was informed by our original research, and evidence in the fields of exercise and health psychology more broadly (39–44). A summary of the theories used, and associated implications is provided in Supplementary Table 1. Of note, a variety of theories were considered necessary to draw upon based on the premise that exercise behaviour is guided by dual processes, and that for longer term behaviour change to occur it is necessary not only to address social cognitive determinants like self-efficacy, but also to address how people feel and the extent to which their behaviour change process is habit forming in nature (41, 43). Theory was also used to inform the architecture of the intervention and the provision of computer-tailored feedback (self-determination theory and elaboration likelihood model) (45, 46) .

Once important determinants and potential acceptable and efficacious strategies were identified based on the above research, a prototype of the intervention was developed in collaboration with consumer advisors and volunteers. This involved filming exercise videos and drafting website content and tailoring algorithms. Finally, the prototype was tested and iteratively refined in a lab-based usability and safety test (n = 11 patients with metastatic prostate cancer), until the intervention was considered ready for trial in the proposed study.

## **Intervention description**

The intervention will use a tailored website, exercise diary, and tele-coaching sessions over a period of eight weeks to provide exercise and lifestyle support for men living with metastatic prostate cancer. Participants can drop out of the intervention at any time and concomitant care is permitted at all times.

### **Tailored website**



The intervention group will be given access to the tailored website ([www.exerciseguide.org.au](http://www.exerciseguide.org.au)) for a period of 8 weeks (Fig. 3). The tailored content, delivered via modules, will be adjusted based on individual characteristics through an automated computer process. This approach (known as computer-tailoring) leads to the delivery of more personally relevant information, which increases message safety and efficacy (21, 47, 48).

Modules include evidence-based information on the safety and benefits of physical activity, an individually tailored exercise program, behaviour change information, self-monitoring, lifestyle information, and other resources of use (Table 1). Based on the previous qualitative work in this area, participants will receive access to all modules as soon as they complete the initial introduction module and are free to complete the modules in order of personal priority.

Table 1  
Overview of tailored modules included in 8-week intervention (page 12)

Module title	Module Goal(s)	Tailoring Variable	Mechanisms of Action
<b>Getting Started</b> <i>(How to use this site)</i>	Introduce the program, including how to navigate the site.	Nil.	• Self-efficacy
<b>My Exercise Plan</b> <i>(Week 1–3)</i>	Provide individualised exercise prescription to participants.	<p>The aerobic training component of the study is based on metastases location, current aerobic modes, current duration and frequency completed and pain levels. Self-reported ability which includes current fatigue levels, experience and confidence, will also be taken into account (14).</p> <p>Resistance exercise prescription is be tailored to the individual based on metastasis location pain or injury location, current fatigue levels and both resistance training experience and confidence.</p> <p>Favoured modes of exercise and access to equipment is taken into account for both aerobic and resistance training.</p>	<ul style="list-style-type: none"> <li>• Self-efficacy</li> <li>• Intentions</li> </ul>
<b>My Exercise Plan</b> <i>(Week 4–8)</i>	Progression of exercise prescription on current exercise levels.	<p>Current aerobic exercise levels (current duration and frequency completed). Current resistance training levels (session frequency and percentage of sets and reps completed)</p> <p>Repeated questions from My Exercise Plan (week 1–3) with previous answers. Participants asked to re-evaluate their answers and change if needed.</p>	<ul style="list-style-type: none"> <li>• Self-efficacy</li> <li>• Intentions</li> </ul>
<b>Exercise Benefits</b> <i>(What does exercise actually do?)</i>	<p>Help men to develop a deeper understanding of the benefits of exercise, and how these benefits accrue. Highlight benefits that are personally relevant.</p> <p>Strengthen intentions to participate in structured exercise.</p>	<p>Health issues that may be improved through exercise (e.g., fatigue, poor sleep, muscle weakness)</p> <p>Exercise types currently participated in (aerobic and resistance).</p>	<ul style="list-style-type: none"> <li>• Outcome expectations and identified regulation of motivation.</li> <li>• Proximal intentions (goals)</li> </ul>

<b>Module title</b>	<b>Module Goal(s)</b>	<b>Tailoring Variable</b>	<b>Mechanisms of Action</b>
<b>Drive Safely</b> <i>(How to exercise safely)</i>	Provide men with tailored information regarding safety implications to promote educational empowerment. Provide an understanding of when exercise should be terminated to avoid risk of injury.	Cancer specific considerations that may impact the safety of exercise prescription; specifically, current treatment/disease side effects (e.g., fatigue, neuropathy) and treatments (e.g., chemotherapy, androgen deprivation therapy). Co-morbidities (e.g., diabetes, osteoarthritis) were also taken into account (10,49).	<ul style="list-style-type: none"> <li>• Self-efficacy</li> <li>• Outcome expectations/knowledge</li> </ul>
<b>How are you Tracking?</b> <i>(Map your progress each week)</i>	Facilitate self-monitoring of exercise behaviours and exercise outcomes, with the aim of strengthening self-regulation.	Date, frequency of exercise, satisfaction with goal, motivation, planning score, habit scores, perceived fitness and overall fatigue, mood, and pain.	<ul style="list-style-type: none"> <li>• Self-efficacy</li> <li>• Self-regulation</li> <li>• Intentions</li> </ul>
<b>Making it Last</b> <i>(Strategies for building lasting exercise habits)</i>	Support the adoption and maintenance of health-enhancing exercise behaviours.	<p>Structured exercise program status (interested but not commenced, commenced but finding it hard to adhere to, commenced and finding it easy to adhere to),</p> <p>barrier self-efficacy, exercise planning behaviors, automaticity of exercise.</p>	<p>Adoption</p> <ul style="list-style-type: none"> <li>• Self-efficacy</li> <li>• Self-regulation</li> <li>• Intentions</li> </ul> <p>Maintenance</p> <ul style="list-style-type: none"> <li>• Intrinsic motivation</li> <li>• Enjoyment</li> <li>• Automaticity (habits)</li> </ul>
<b>Exercise +</b> <i>(What else can you do to keep healthy?)</i>	Increase health literacy regarding other lifestyle factors that may impact on health and quality of life besides structured exercise. Provide links to further information. Provide men exhibiting high distress with information on where to find help.	Current diet, sitting time, alcohol consumption, sleep quality, hot flushes, distress.	<ul style="list-style-type: none"> <li>• Increasing knowledge</li> <li>• Sign-posting</li> <li>• Competence</li> </ul>

Module title	Module Goal(s)	Tailoring Variable	Mechanisms of Action
Where else can I get help?	Facilitate access to additional support needed in order to improve lifestyle behaviours and quality of life.	Topics of interest (diet, exercise, distress, sleep, symptom management, clinical trials), preferred forms of help (e.g., guidance from a professional, booklets), and interest in advice specific to Aboriginal or Torres Strait Islander people, people who have English as a second language and/or people in the LGBTIQ community.	<ul style="list-style-type: none"> <li>• Increasing knowledge</li> <li>• Sign-posting</li> <li>• Human support</li> </ul>

## Web-based Exercise Prescription

Participants are individually prescribed an 8-week multi-modal (resistance, aerobic, and flexibility) program based upon the conservative prescription used in Galvão et al. 2018 (Table 2) and isometric spinal exercise prescription applied in Rief et al. 2014 (14, 15). Exercise prescription variables can be autoregulated (intensity or volume of session regulated based on participants' current capacity to exercise as modified by fatigue, pain levels, confidence) by the participant re-completing module assessments. Participants are educated on autoregulation via the safety and exercise plan modules.

Table 2: Modified multimodal exercise prescription for individuals with bone metastases (Galvão et al. 2018).

Metastasis Location	Resistance			Aerobic		Flexibility
	Upper	Trunk	Lower	WB	NWB	
Proximal humerus		✓	✓	✓		✓ ≠
Cervical Spine	✓ *		✓	✓		✓ ‡
Thoracic spine/ribs	✓ *		✓	✓		✓ ‡
Lumbar spine	✓		✓		✓	✓ ‡
Pelvis	✓	✓	✓ †		✓	✓ †
Proximal femur	✓	✓			✓	✓ †

✓ Target exercise region

\* Exclusion of shoulder flexion/extension/abduction/adduction – inclusion of elbow flexion/extension.

† Exclusion of hip extension/flexion – inclusion of knee extension/flexion.

‡ Exclusion of spinal flexion/extension/rotation.

≠ Exclusion of elbow flexion/extension.

† Exclusion of knee flexion/extension.

WB = weight bearing (walking); NWB = Non-weight bearing (water walking; cycling)

## Resistance-based component

There are twenty-seven possible resistance exercises available for prescription (Supplementary table 2), which have been used in Galvão et al. (2018) and Rief et al. (2014) (14, 50). However, dependent on the

algorithm, participants will be prescribed between three and eight exercises. Unpublished usability testing on eleven men reported a median of six exercises prescribed per person. Each resistance exercise will be accompanied by a video demonstration (see Fig. 4) and written exercise instructions to aid both safety and efficacy. Eccentric and concentric phases are performed over a period of 2 seconds each to reduce peak forces transmitted to the skeleton (12–14).

Intensity will be prescribed individually using the OMNI resistance exercise scale of perceived exertion (Fig. 5) and will range between seven to eight out of ten (moderate-vigorous intensity) as determined by current fatigue levels and both resistance training experience and confidence (51). This variability has been built in to help balance adherence with the stimulus needed to see clinically relevant outcomes. A 12- to 8-repetition maximum has been prescribed for two to three sets per exercise (Table 3). Self-reported questions at the end of week three will allow researchers to monitor compliance. Participants unable to comply to at least 80% of the prescription (based on total sessions completed and compliance to volume prescribed) will be given a modified prescription for the last five weeks (Supplementary table 3) to ensure the participant does not increase repetitions or sets too rapidly. To encourage progression, participants will be instructed to increase the resistance of the upper and lower body exercises by self-assessed 5–10% if the rate of perceived exertion standards were exceeded in each exercise set completed (14).

Table 3  
Resistance training prescription.

Week	1	2	3	4–8
Upper body exercises	2 × 12	2 × 12	3 × 12	2–3 × 12 – 8 (see additional file 3 for specific prescription)
Trunk exercises	2 × 8	2 × 8	2 × 10	2–3 × 10–12 (see additional file 3 for specific prescription)
Lower body exercise	2 × 12	2 × 12	3 × 12	2–3 × 12 – 8 (see additional file 3 for specific prescription)

Frequency of resistance training will be two days per week for the first three weeks and then increased to three sessions if the participant was able to adhere. Participants already completing one or more sessions per week prior to the intervention starting will be required to complete at least two sessions per week of the Exercise Guide program and will be encouraged to complete more sessions of their own prescription if they wish. Participants will be mailed four resistance exercise bands of different loads and a door anchor to help them to complete the exercises recommended.

### **Aerobic-based component**

Individuals with bone metastases will be prescribed either stationary cycling, water walking or walking. For individuals without bone metastases, other modes such as conventional cycling, rowing or cross

trainers are also prescribed. Equipment accessibility, metastasis location, pain and preference will influence what mode prescribed. Participants will complete 2–3 sets of between 6 and 15 minutes, with rest intervals ranging from 0 to 5 minutes or 1 set of 30 minutes with no prescribed rest (Table 4). Aerobic frequency will be based on current activity levels and what activity duration the participant feels is feasible. For individuals currently completing two sessions or less a week, two sessions a week will be prescribed for the first three weeks. If individuals are completing three or more sessions, then they will be prescribed three specific aerobic sessions. Individuals are encouraged to complete extra aerobic sessions if they feel capable. Intensity will be prescribed using the OMNI aerobic exercise scale of perceived exertion (51). Intensity will be prescribed individually and will be between six and seven out of ten (moderate intensity) as determined by current fatigue levels and both experience and confidence.

Table 4.  
Aerobic training prescription

<b>Time</b>	<b>Current</b>	<b>Ability</b>	<b>Aerobic Prescription</b>
0-4min	No	Low/High	2 x 3-minute efforts with 3-5 minute rest
0-4min	Yes	Low/High	2 x 4-minute efforts with 3-5 minute rest
5-9min	No/Yes	Low	2 x 5 minutes with 2 minutes rest
5-9min	No/Yes	High	3 x 5 minutes with 2 minutes rest
10-19min	No/Yes	Low	2 x 10-minute efforts with 5-minute rest
10-19min	No	High	
10-19min	Yes	High	2 x 15-minute efforts with 5-minute rest
20-29min	No/Yes	Low	
20-29min	No/Yes	High	1 x 30-minute effort
30-44min	No	High	
30-44min	Yes	Low	
45-59min	No/Yes	Low	
60min +	No/Yes	Low	
30-44min	Yes	High	3 x 10-minute high intensity
45-59min	No	High	
45-59min	Yes	Low	
60min +	No/Yes	High	
Unknown	No/Yes	High/Low	2-3 x 5-10 minute efforts with 2-5 minute rest

Flexibility exercises will be prescribed based on previous work by Galvão et al. 2018 (see Table 2), which has been shown to be safe. Static stretching will involve all major muscle groups involved in the session held for 30–60 s over a period of 2–4 sets and will be prescribed via pictorial and written instructions.

## **Tele-health coaching and monitoring of progress**

To keep participants engaged in the program and ensure sufficient support, participants will also have access to an accredited exercise physiologist (HE). The role of the exercise physiologist will be to encourage uptake of the eight week individually prescribed program, provide feedback, and monitor progress over the eight-week intervention period. Recent reviews of online digital behaviour change interventions suggest that the inclusion of human support increases the efficacy of online interventions (52). The exercise physiologist will make contact with participants allocated to the intervention during week one of the program (by phone or internet call). They will discuss participant goals, provide advice about how best to use the program to achieve their goals, and offer remote monitoring of participant progress throughout the eight weeks. Remote monitoring will involve reviewing data entered into the website by participants weekly and providing encouragement, feedback and advice based on performance. Contact after week one will occur via email and text messages (up to one per week), with the exception of week three, which will involve a follow-up call (by phone or internet). Participants will have the option of submitting questions to the exercise physiologist whenever they would like to via 'the ask the EP' (exercise physiologist) feature of the website. Responses will be sent to participants electronically where possible.

## **Additional components**

**Library:** The Exercise Guide library is populated with 25 short articles about different aspects of living with prostate cancer, exercise, and behaviour change information. Example topics include: 'Can exercise help your sexual health?', 'Sitting too much: What are the real consequences' and 'Exercise and depression: 5 tips to move your mood'.

**Diary:** A paper-based exercise diary will be provided to participants in the intervention group to self-report specific aspects of the resistance training (exercises, sets, repetitions, session rate of perceived exertion, duration, bone pain visual analogue score and general pain visual analogue scale), aerobic training (type, duration, session rate of perceived exertion, bone pain visual analogue score and general pain visual analogue scale) and stretching exercise sessions performed. This will allow researchers to

## **Waitlist control group**

Participants randomised into the wait-list control group will complete the baseline outcome measures as seen in Table 4 and will then be asked to continue with usual care, including maintaining their current physical activity levels for eight weeks. In week nine, wait-list control participants will repeat the outcome measures. At the end of the intervention, the control group will be given access to the eHealth tool for eight weeks and one tele-coaching session as authors felt it was unethical to deny participants access to treatment.

# Measures

## Feasibility:

### Trial parameters

Screening, recruitment and attrition rates will all be tracked, with reasons for ineligibility, lack of interest and drop-out recorded where possible. Recruitment source will also be assessed during study enrolment. The proportion of participants with complete data for each outcome measure will be assessed, along with the number of reminders and data collection attempts.

### Intervention parameters

The time taken to deliver coaching sessions and respond to questions asked using the “ask and EP feature” will be recorded in order to provide a proxy indicator of cost of delivery.

## Success of the intervention:

### Acceptability

The acceptability of the intervention will be assessed using a mixed-methods approach. Participant's perceptions of module content will be assessed in real-time using a five-star rating system (1- Poor to 5- Excellent). All other acceptability items will be assessed in week 9. Perceived personal relevance of website content will be assessed via survey using three items designed to evaluate the success of tailoring on a 7-point Likert scale (e.g., ‘the web-based content was written with someone like me in mind’) (53). The extent to which the coaching was perceived as motivationally supportive will be assessed using the 15-item perceived environmental supportiveness scale (54) and overall satisfaction with the intervention as a health service will be assessed using the client satisfaction Questionnaire-8 (34). Finally, qualitative data will be collecting using open-ended survey questions and qualitative interviews exploring the pros and cons of the website, any unmet needs, and recommendations for improvement.

### Usability

Usability of the intervention website will be assessed using the System Usability Scale (35). The survey consists of a 9-item questionnaire with five response options for respondents ranging from “strongly agree” to “strongly disagree”.

### Usage

Website usage data, including the number of logins, time on site and number of modules completed, will be assessed using Google analytics and inbuilt website tracking software (55). Usage of the exercise diary will also be recorded in terms of number of sessions logged.



## **Adverse events**

Participants will be advised to report any injuries either through the website or by calling the study project coordinator (HE). An item on adverse events will also be included in the follow-up questionnaire based on the Common Terminology Criteria for Adverse Events V.5.0 grading criteria.

## **Mechanisms of action**

Intervention behavioural change mechanisms will be assessed at baseline and week 9. This will include measuring barrier self-efficacy for resistance and aerobic activities using 9 items used in Plotnikoff et al., with the exclusion of diabetic specific questions. Participants were asked to rate their confidence (1 = not at all confident to 5 = extremely confident) that they could participate in exercise when they are faced with certain challenges, for example when they are 'a little tired' or when 'doing it by themselves' (56). Outcome expectations will be measured using five items from the validated exercise pros subscale and three items from the cons scale (57). The items in the scale assess the extent that individuals agree or disagree (1 = strongly disagree to 5 = strongly agree). The behavioural regulation in exercise questionnaire will be used to measure motivation type scored on a five point Likert scale (19 items (58)). Other behavioural aspects which will be measured include support (2 items (56)), intentions (4 items (59)), behavioural capability (7 items (53)) and habit formation (4 items (43))

*Behaviour change:* Accelerometry will be used to objectively measure weekly minutes of light, moderate and vigorous physical activity at baseline and immediately post-intervention. Data will be collected using the ActiGraph (ActiGraph GT3X, <http://www.theActiGraph.com>) accelerometer, which will be worn on the right hip during waking hours for seven days with the intention of gaining at least five days of usable data (55). Participants will record times the monitor was removed and wear-time will be validated using Choi et al (2012) (60). Triaxial data will be collected in 1-second epochs along with step counts and inclinometry. The adapted Godin leisure-time questionnaire will be used to assess self-reported aerobic and resistance based physical activity at baseline and immediately post-intervention (12). Finally, at the immediate post-intervention follow-up only, self-rated exercise adherence will be measured using two items with an 11-point numeric rating scale (0 = strongly disagree, 10 = strongly agree). Participants will be asked to separately rate their agreement with two statements related to their adherence to their prescribed program (overall aerobic exercise sessions, overall resistance exercise sessions) (61)

## **Health outcomes**

All health-related outcomes will be assessed at baseline and immediately post-intervention. Health-related quality of life will be assessed using the EORTC Quality of Life-Core 30 (EORTC QLQ-C30), which is a validated and reliable questionnaire for quality of life in cancer patients (62). The 30-item core survey assesses a comprehensive range of quality of life domains including functioning (physical, role, cognitive, emotional and social), symptoms (fatigue, nausea and vomiting, sleep, pain, appetite, shortness of breath), financial hardship, and global health status (63).

The 13-item Functional Assessment of Chronic Illness Therapy-fatigue subscale will be administered to measure participant's level of fatigue. The questionnaire has been demonstrated as a valid and reliable measure (64). The Hospital Anxiety and Depression Scale will be used to evaluate changes in anxiety and depression by using two 7-item Depression and Anxiety sub-scales. (65). The reliability and validity has been shown to be acceptable in individuals with prostate cancer (66). Additionally, the Pittsburgh Sleep Quality Index questionnaire will measure sleep quality. Psychometric evaluation of the Pittsburgh Sleep Quality Index in cancer patients has established internal consistency, reliability, and construct validity (67).

## **Sub-study outcome measures**

Subgroup selection will be based on proximity to available testing sites, with all participants (both intervention and waitlist control groups) who can easily access one of our testing sites invited to complete subgroup measures). We intend to have testing sites available in Adelaide (the University of Adelaide, University of South Australia) and Melbourne (University of Melbourne).

### *Physical function*

The 400 m self-paced walk will be used to assess aerobic fitness level (14, 69). Measures of completion time (in seconds), maximal heart rate, average heart rate and rate of perceived exertion will be recorded. The timed up-and-go test and the repeated chair stand (5 repetitions) will be measured by time to completion to provide muscular power, ambulation and functional lower limb strength (12, 13, 68).

### *Muscular strength*

The one-repetition maximum method will be utilised to determine muscular strength (14). The leg extension will be used to determine lower limb strength, and the chest press will assess upper limb strength. Patients with proximal femur bone lesions will be excluded from the leg extension one-repetition maximum test, whereas those with rib, thoracic spine lesions and or humerus lesions will be excluded from the chest press one-repetition maximum test.

## **Data management and monitoring**

All research data will be stored on a password-protected network drive on a password-protected computer and only members of the study team will have access to this data. Questionnaire data will be recorded using a secure online data collection instrument (RedCap) with participants being sent web links at the appropriate time points. Participant contact information and name will be held in a separate file to study data, and unique ID numbers will be allocated. Only ID numbers will appear alongside outcome data. A trial steering committee (CS, DG, GK, NB) will oversee the trial. Any adverse events will be reported to the committee and the steering committee have the power to terminate the study if necessary. As a clinical oncologist and urologist sit on the trial steering committee, it was determined that a trial data monitoring committee was not required. Trial results will be submitted for publication and communicated in a relevant medical or scientific journal.

# Data analysis

## *Sample size*

As this is a pilot study, which uses pre-specified criteria for success rather than a primary outcome, a formal sample size calculation was not essential (70). Similar pilot studies reported sample sizes for two-arm trials were 36 and 30 per arm respectively for dichotomous and continuous endpoints (71). As such, the trial aims to recruit 66 participants, 33 in each arm. This sample size will also enable us to detect (with 95% confidence) trial feasibility issues (including drop out) with a 10% (or greater probability of occurring) (72).

Study data will be analysed using SPSS version 26 (IBM, Chicago, IL, USA). Descriptive statistics will be calculated for all study variables. ANCOVAs (or non-parametric equivalents) will be used to conduct between-group comparisons, with potential confounders included in the model (e.g., age, time since diagnosis, treatment status, and baseline outcome assessments). Treatment effects will be estimated as covariate-adjusted mean differences between the two treatment groups at follow up. A senior University of Adelaide statistician employed by the Freemasons Foundation Centre for Men's Health will oversee the analyses. Sensitivity analyses will be conducted to explore the impact of missing data and remove any individuals who were unable to be prescribed with exercise from the analysis.

## *Qualitative Analysis*

Any verbal feedback from participants will be recorded (with permission) and transcribed verbatim. A thematic assessment will be undertaken to analyse the data as completed by Braun and Clarke (73). This approach is data-driven and involves becoming familiar with the data, generating initial codes, searching for themes among codes and refining the themes to fit the data better.

# Protocol changes

Future amendments to the protocol will be considered and approved by the Steering Committee and resubmitted for ethical approval. Approved amendments will be subsequently distributed to participants through the study website.

# Discussion

The primary objective of the trial is to assess key areas of uncertainty regarding the use of ExerciseGuide (and other similar programs) in future practice and research, including issues relating to feasibility, safety, and potential for efficacy. Publication of this protocol aims to ensure transparency around pre-specified criterion for success, aid replication of study and intervention methods, and inform interested parties of the upcoming trial results.

ExerciseGuide represents a novel approach to providing geographically accessible individualised exercise prescription with distance-based multidisciplinary support. The addition of distance-based supervision,

tailored behavioural change strategies, telehealth support, access to printed materials where needed may improve adherence to distance-based interventions, which are currently seen as inferior in comparison to the gold standard 'face-to-face' intervention (23,29). Increasing the feeling of personalisation, connectedness, and support through eHealth has been one method to address the disparity between the two approaches. It is anticipated that an intervention of this type would not replace face-to-face interventions, but rather play a role alongside on-site interventions as an alternative where no onsite interventions can be made available due to staffing or financial shortages.

Pilot trials studies of this nature can possibly reduce research waste and more significantly, they can lead to changes in development and design in order to maximise the intervention and trial characteristics for future trials (74). Usability, acceptability, adverse events, safety, and evidence of aerobic activity or resistance-based activity participation will all be monitored to determine if progression to a full randomized control trial is worthwhile.

Table 4: Overview of measurement tools (page 19)

Outcome	Measure	Number of items	Intervention group	Control group	Collection point (week)
Acceptability	Module ratings	10	P	O	1-8
	Website perceived personal relevance (53)	3	P	O	9
	Client Satisfaction Questionnaire (34)	8	P	O	9
	Perceived Environmental Supportiveness Scale (54)	15	P	O	9
	Qualitative data (open-ended survey questions and qualitative interview)	4	P	O	9
Usability Usage	Software usability scale (35)	9	P	O	9
	Website usage data (55)	3	P	O	1-8
	Number of exercise sessions	2	P	O	1-8
Adverse events	Common Terminology Criteria for Adverse Events V.5.0 grading criteria	1	P	P	9
Mechanisms of action	Self-efficacy (56)	9	P	P	0, 9
	Outcome expectations (56).	8	P	P	0, 9
	Motivation type (58)	19	P	P	0, 9
	Social Support (56)	2	P	P	0, 9
	Intention (59)	4	P	P	0, 9
	Behavioural capability (53)	2	P	P	0, 9
	Habit formation (43)	4	P	P	0, 9
Behaviour change	ActiGraph Accelerometer (55)	1	P	P	0, 9
	Modified Godin-Leisure time questionnaire(12)	4	P	P	0, 9
	Self-rated exercise adherence (61)	2	P	O	9
Health outcomes	European Organisation for Research and Treatment of Cancer Quality of Life-Core 30 (63)	30	P	P	0, 9
	Functional Assessment of Chronic Illness Therapy-fatigue subscale(64)	13	P	P	0, 9
	Hospital Anxiety and Depression Scale(65)	10	P	P	0, 9
	The Pittsburgh Sleep Quality Index(67)	14	P	P	0, 9
Sub-study Physical function	400m self-paced walk(14).	1	P	P	0, 9
	Timed up-and-go test(12)	1	P	P	0, 9
	Repeated chair stand (68)	1	P	P	0, 9
	One-repetition maximum (14).	2	P	P	0, 9

## Abbreviations

SPIRIT

Standard Protocol Items:Recommendations for Interventional Trials

CTCAE

Common Terminology Criteria for Adverse Events

EORTC QLC-30

European Organization for the Research and Treatment of Cancer Quality of Life Questionnaire-30 items

WB

weight bearing

NWB

Non-weight bearing

EP

Exercise physiologist

## Declarations

### **Ethics approval and consent to participate:**

Ethical clearance was obtained by the University of Adelaide Research Ethics Committee (H-2018-153).

Participants are required to provide signed informed consent at the time of enrolment.

### **Consent for publication**

Consent was given by participants and instructor to have still images from video demonstrations to be used in the publication.

### **Availability of data and materials:**

Not applicable.

### **Declaration of interest:**

There are no competing interests for this study.

### **Funding:**

This trial is funded by the Australian New Zealand Urogenital and Prostate Cancer Trials Group (ANZUP) through a Below the Belt research grant. HE is funded by a Commonwealth Research Training Program scholarship and the Freemasons Centre for Men's Health. CES was supported by a National Health and Medical Research Council ECR Fellowship (ID 1090517) and is currently supported by a Victorian Cancer Agency Mid-Career Fellowship (MCRF19028). The funding bodies had no role in study design, analysis or creation of the manuscript

### **Authors Contributions**

CS, CF, DG, RN, CV, SC, AV, GW, GK and NB collaborated to design the study and successful grant application. All authors contributed to the study protocol and criteria. HE and CF adapted the exercise prescription work by DG and RN into computer algorithms. The steering committee will be comprised of the authors. HE and CS drafted the protocol manuscript, and all authors contributed to reviewing the draft manuscript.

## Acknowledgements

We thank the consumers from the Australian New Zealand Urogenital and Prostate Cancer Trials Group, Freemasons Foundation Centre for Men's Health, and the Peter MacCallum Hospital for input into the web-based tool and to inform the decision of the tool.

## References

1. Prashanth R. Epidemiology of prostate cancer. *World J Oncol*. 2019;10(2):63–89.
2. Collins A, Sundararajan V, Millar J, Burchell J, Le B, Krishnasamy M, et al. The trajectory of patients who die from metastatic prostate cancer: a population-based study. *BJU Int*. 2019;123:19–26.
3. Luo Q, Yu XQ, Smith DP, O'Connell DL. A population-based study of progression to metastatic prostate cancer in Australia. *Cancer Epidemiol*. 2015;39:617–22.
4. Australian Institute of Health and Welfare (AIHW): Cancer data in Australia. 2018. <https://www.aihw.gov.au/reports/cancer/cancer-data-in-australia>. Accessed 30 April 2020.
5. Hart NH, Galvão DA, Newton RU. Exercise medicine for advanced prostate cancer. *Curr Opin Support Palliat Care*. 2017;11:247–57.
6. Sheill G, Guinan EM, Peat N, Hussey J. Considerations for exercise prescription in patients with bone metastases: a comprehensive narrative review. *PM&R*. 2018;10(8):843–64.
7. Welte SE, Wiskemann J, Scharhag-Rosenberger F, Förster R, Bostel T, Bruckner T, et al. Differentiated resistance training of the paravertebral muscles in patients with unstable spinal bone metastasis under concomitant radiotherapy: study protocol for a randomized pilot trial. *Trials*. 2017;18:155.
8. Chambers SK, Hyde MK, Laurie K, Legg M, Frydenberg M, Davis ID, et al. Experiences of Australian men diagnosed with advanced prostate cancer: a qualitative study. *BMJ Open*. 2018;8:e019917.
9. Lee M, Jim HS, Fishman M, Zachariah B, Heysek R, Biagioli M, et al. Depressive symptomatology in men receiving androgen deprivation therapy for prostate cancer: A controlled comparison. *Psycho-Oncol*. 2015;24(4):472–7.
10. Hayes SC, Newton RU, Spence RR, Galvão DA. The Exercise and Sports Science Australia position statement: Exercise medicine in cancer management. *J Sci Med Sport*. 2019.
11. Campbell KL, Winters-stone KM, Wiskemann J, May AM, Schwartz AL, Courneya KS, et al. Exercise guidelines for cancer survivors: consensus statement from international multidisciplinary roundtable

- exercise guidelines for cancer survivors: consensus statement from international multidisciplinary roundtable. *Med Sci Sport Exerc.* 2019;51(11):2375–90.
12. Cormie P, Newton RU, Spry N, Joseph D, Taaffe DR, Galvão DA. Safety and efficacy of resistance exercise in prostate cancer patients with bone metastases. *Prostate Cancer Prostatic Dis.* 2013;16:328–35.
  13. Cormie P, Galvão DA, Spry N, Joseph D, Taaffe TR, Newton RU. Functional benefits are sustained after a program of supervised resistance exercise in cancer patients with bone metastases: longitudinal results of a pilot study. *Support Care Cancer.* 2014;22:1537–48.
  14. Galvão DA, Taaffe DR, Spry N, Cormie P, Joseph D, Chambers SK, et al. Exercise preserves physical function in prostate cancer patients with bone metastases. *Med Sci Sports Exerc.* 2018;50(3):393–9.
  15. Rief H, Petersen LC, Omlor G, Akbar M, Bruckner T, Rieken S, et al. The effect of resistance training during radiotherapy on spinal bone metastases in cancer patients - A randomized trial. *Radiother Oncol.* 2014;112(1):133–9.
  16. Newton RU, Kenfield SA, Hart NH, Chan JM, Courneya KS, Catto J, et al. Intense exercise for survival among men with metastatic castrate-resistant prostate cancer (INTERVAL-GAP4): a multicentre, randomised, controlled phase III study protocol. *BMJ Open.* 2018;8(5):e022899.
  17. Zopf EM, Newton RU, Taaffe DR, Spry N, Cormie P, Joseph D, et al. Associations between aerobic exercise levels and physical and mental health outcomes in men with bone metastatic prostate cancer: a cross-sectional investigation. *Eur J Cancer Care.* 2017;26(6):e12575.
  18. Galvão DA, Newton RU, Gardiner RA, Girgis A, Lepore SJ, Stiller A, et al. Compliance to exercise-oncology guidelines in prostate cancer survivors and associations with psychological distress, unmet supportive care needs, and quality of life. *Psycho-Oncology.* 2015;24(10):1241–9.
  19. Lowe SS, Watanabe SM, Baracos VE, Courneya KS. Physical activity interests and preferences in palliative cancer patients. *Support Care Cancer.* 2010;18:1469–75.
  20. Sheill G, Guinan E, Neill LO, Hevey D, Hussey J. The views of patients with metastatic prostate cancer towards physical activity: A qualitative exploration. *Support Care Cancer.* 2017;26(6):1747–54.
  21. Vandelanotte C, Müller AM, Short CE, Hingle M, Nathan N, Williams SL, et al. Past, present, and future of eHealth and mHealth research to improve physical activity and dietary behaviors. *J Nutr Educ Behav.* 2016;48:219–28.
  22. Roberts AL, Fisher A, Smith L, Heinrich M, Potts HWW. Digital health behaviour change interventions targeting physical activity and diet in cancer survivors: a systematic review and meta-analysis. *J Cancer Surviv.* 2017;11:704–19.
  23. Buffart LM, Kalter J, Sweegers MG, Courneya KS, Newton RU, Aaronson NK, et al. Effects and moderators of exercise on quality of life and physical function in patients with cancer: an individual patient data meta-analysis of 34 RCTs. *Cancer Treat Rev.* 2017;52:91–104.
  24. Kenfield SA, Van Blarigan EL, Ameli N, Lavaki E, Cedars B, Paciorek AT, et al. Feasibility, acceptability, and behavioral outcomes from a technology-enhanced behavioral change intervention (Prostate 8): a pilot randomized controlled trial in men with prostate cancer. *Eur Urol.* 2019;75(6):950–8.



25. Newton RU, Taaffe DR, Chambers SK, Spry N, Galvão DA. Effective exercise interventions for patients and survivors of cancer should be supervised, targeted, and prescribed with referrals from oncologists and general physicians. *J Clin Oncol*. 2018;36(9):927–8.
26. Short CE, Trinh L, James E. Effective technology-based behaviour change interventions in prostate cancer supportive care: are we there yet? *Eur. Urol*. 2019;75:959–60.
27. Lau Y, Chee DGH, Chow XP, Cheng LJ, Wong SN. Personalised eHealth interventions in adults with overweight and obesity: A systematic review and meta-analysis of randomised controlled trials. *Prev Med*. 2020;132:106001.
28. Andersson G, Cuijpers P. Internet-based and other computerized psychological treatments for adult depression: a meta-analysis. *Cogn Behav Ther*. 2009;38(4):196–205.
29. Golsteijn RHJ, Bolman C, Volders E, Peels DA, de Vries H, Lechner L. Short-term efficacy of a computer-tailored physical activity intervention for prostate and colorectal cancer patients and survivors: a randomized controlled trial. *Int J Behav Nutr Phys Act*. 2018;15(1):106.
30. Haberlin C, O'Dwyer T, Mockler D, Moran J, O'Donnell DM, Broderick J. The use of eHealth to promote physical activity in cancer survivors: a systematic review. *Support Care Cancer*. 2018;26:3323–36.
31. Australian Communications and Media Authority. Digital lives of older Australians. <https://www.acma.gov.au/publications/2016-08/publication/digital-lives-older-australians> (2017). Accessed 12 January 2020.
32. Trinh L, Arbour-Nicitopoulos KP, Sabiston CM, Berry SR, Loblaw A, Alibhai SMH, et al. RiseTx: testing the feasibility of a web application for reducing sedentary behavior among prostate cancer survivors receiving androgen deprivation therapy. *Int J Behav Nutr Phys Act*. 2018;15(1):49.
33. Chan AW, Tetzlaff JM, Altman DG, Laupacis A, Gøtzsche PC, Krleža-Jerić K, et al. SPIRIT 2013 statement: defining standard protocol items for clinical trials. *Ann Intern Med*. 2013;158(3):200–7.
34. Attkisson CC, Greenfield TK. The UCSF client satisfaction scales: I. The Client Satisfaction Questionnaire-8. In: Maruish, editor. *The use of psychological testing for treatment planning and outcomes assessment: Instruments for adults*. New Jersey: Lawrence Erlbaum Associates Publishers; 2004. pp. 799–811.
35. Brooke J. SUS-A quick and dirty usability scale. *Usability Eval Ind*. 1996;189(194):4–7.
36. American College of Sports Medicine. *ACSM's exercise testing and prescription*. 7th ed. Lippincott Williams & Wilkins; 2017.
37. Bartholomew LK, Parcel GS, Kok G. Intervention mapping: a process for developing theory- and evidence-based health education programs. *Health Educ Behav*. 1998;25:545–63.
38. Forbes CC, Finlay A, McIntosh M, Siddiquee S, Short CE. A systematic review of the feasibility, acceptability, and efficacy of online supportive care interventions targeting men with a history of prostate cancer. *J Cancer Surviv*. 2019;13:75–96.
39. Craike MJ, Gaskin CJ, Mohebbi M, Courneya KS, Livingston PM. Mechanisms of physical activity behavior change for prostate cancer survivors: a cluster randomized controlled trial. *Ann Behav Med*. 2018;52(9):798–808.

40. Rhodes RE, De Bruijn GJ. How big is the physical activity intention-behaviour gap? A meta-analysis using the action control framework. *Br J Health Psychol.* 2013;18(2):296–309.
41. Rhodes RE, McEwan D, Rebar AL. Theories of physical activity behaviour change: a history and synthesis of approaches. *Psychol Sport Exerc.* 2019;42:100–9.
42. Teixeira PJ, Carraça EV, Markland D, Silva MN, Ryan RM. Exercise, physical activity, and self-determination theory: a systematic review. *Int J Behav Nutr Phy.* 2012;9:78.
43. Gardner B, Lally P, Wardle J. Making health habitual: the psychology of “habit-formation” and general practice. *Brit J Gen Pract.* 2012;62:664–6.
44. Stacey FG, James EL, Chapman K, Courneya KS, Lubans DR. A systematic review and meta-analysis of social cognitive theory-based physical activity and/or nutrition behavior change interventions for cancer survivors. *J Cancer Surviv.* 2015;9:305–38.
45. Petty RE, Barden J, Wheeler SC. The Elaboration Likelihood Model of persuasion: Developing health promotions for sustained behavioral change. In: DiClemente RJ, Crosby RA, Kegler MC, editors. *Emerging theories in health promotion practice and research.* Jossey-Bass;2009. p. 185–214.
46. Nikoloudakis IA, Crutzen R, Rebar AL, Vandelanotte C, Quester P, Dry M, et al. Can you elaborate on that? Addressing participants’ need for cognition in computer-tailored health behavior interventions. *Health Psychol Rev.* 2018;12(4):437–52.
47. Lustria MLA, Noar SM, Cortese J, Van Stee SK, Glueckauf RL, Lee J. A meta-analysis of web-delivered tailored health behavior change interventions. *J Health Commun.* 2013;18:1039–69.
48. Wolfenden L, Nathan N, Williams CM. Computer-tailored interventions to facilitate health behavioural change. *Br J Sports Med.* 2015;49:1478–9.
49. Galvão DA, Newton RU, Girgis A, Lepore SJ, Stiller A, Mihalopoulos C, et al. Randomized controlled trial of a peer led multimodal intervention for men with prostate cancer to increase exercise participation. *Psycho-oncology.* 2018;27(1):199–207.
50. Rief H, Petersen LC, Omlor G, Akbar M, Bruckner T, Rieken S, et al. The effect of resistance training during radiotherapy on spinal bone metastases in cancer patients—A randomized trial. *Radiother Oncol.* 2014;112:133–9.
51. Gearhart RF, Lagally KM, Riechman SE, Andrews RD, Robertson RJ. Strength tracking using the OMNI resistance exercise scale in older men and women. *J Strength Cond Res.* 2009;23(3):1011–5.
52. Santarossa S, Kane D, Senn CY, Woodruff SJ. Exploring the role of in-person components for online health behavior change interventions: Can a digital person-to-person component suffice? *J. Med. Internet Res.* 2018;20(4):e144.
53. Short C, James E, Girgis A, Mcelduff P, Plotnikoff R. The efficacy of two theoretically-based print interventions for promoting PA behaviour among post-treatment breast cancer survivors: A nationally-based 3-arm RCT. *J Sci Med Sport.* 2012;15:175–6.
54. Markland D, Tobin VJ. Need support and behavioural regulations for exercise among exercise referral scheme clients: the mediating role of psychological need satisfaction. *Psychol Sport Exerc.* 2010;11(2):91–9.

55. Vandelanotte C, Short C, Plotnikoff RC, Hooker C, Canoy D, Rebar A, et al. TaylorActive - Examining the effectiveness of web-based personally-tailored videos to increase physical activity: a randomised controlled trial protocol. *BMC Public Health*. 2015;15(1):1020.
56. Plotnikoff RC, Lippke S, Courneya KS, Birkett N, Sigal RJ. Physical activity and social cognitive theory: a test in a population sample of adults with type 1 or type 2 diabetes. *Appl Psychol*. 2008;57(4):628–43.
57. Plotnikoff RC, Blanchard C, Hotz SB, Rhodes R. Measurement in physical education and exercise science validation of the decisional balance scales in the exercise domain from the transtheoretical model: a longitudinal test. *Meas Phys Educ Exerc Sci*. 2009;5(4):191–206.
58. Markland D, Tobin V. A modification to the behavioural regulation in exercise questionnaire to include an assessment of amotivation. *J Sport Exerc Psychol*. 2004;26(2):191–6.
59. Rhodes RE, Rebar AL. Conceptualizing and defining the intention construct for future physical activity research. *Exerc Sport Sci Rev*. 2017;45(4):209–16.
60. Choi L, Ward SC, Schnelle JF, Buchowski MS. Assessment of wear/nonwear time classification algorithms for triaxial accelerometer. *Med Sci Sports Exerc*. 2012;44(10):2009–16.
61. Bennell KL, Marshall CJ, Dobson F, Kasza J, Lonsdale C, Hinman RS. Does a web-based exercise programming system improve home exercise adherence for people with musculoskeletal conditions? *Am J Phys Med Rehabil*. 2019;98(10):850–8.
62. Kaasa S, Bjordal K, Aaronson N, Moum T, Wist E, Hagen S, et al. The EORTC core quality of life questionnaire (QLQ-C30): validity and reliability when analysed with patients treated with palliative radiotherapy. *Eur J Cancer*. 1995;31(13–14):2260–3.
63. Ware P, Bartlett SJ, Paré G, Symeonidis I, Tannenbaum C, Bartlett G, et al. Using eHealth technologies: interests, preferences, and concerns of older adults. *Interact J Med Res*. 2017;6(1):e3.
64. Cella D, Lai JS, Chang CH, Peterman A, Slavin M. Fatigue in cancer patients compared with fatigue in the general United States population. *Cancer*. 2002;94(2):528–38.
65. Greer JA, Jacobs J, Pensak N, MacDonald JJ, Fuh C, Perez GK, et al. Randomized trial of a tailored cognitive-behavioral therapy mobile application for anxiety in patients with incurable cancer. *Oncologist*. 2019;24(8):1111–20.
66. Gerbershagen HJ, Özgür E, Straub K, Dagtekin O, Gerbershagen K, Petzke F, et al. Prevalence, severity, and chronicity of pain and general health-related quality of life in patients with localized prostate cancer. *Eur J Pain*. 2008;12(3):339–50.
67. Beck SL, Schwartz AL, Towsley G, Dudley W, Barsevick A. Psychometric evaluation of the Pittsburgh sleep quality index in cancer patients. *J Pain Symptom Manage*. 2004;27(2):140–8.
68. Bohannon RW. Measurement of sit-to-stand among older adults. *Top Geriatr Rehabil*. 2012;28(1):11–6.
69. Rolland Yves M, Cesari M, Miller Michael E, Penninx Brenda W, Atkinson Hal H, Pahor M. Reliability of the 400-m usual-pace walk test as an assessment of mobility limitation in older adults. *J Am Geriatr Soc*. 2004;52:972–6.

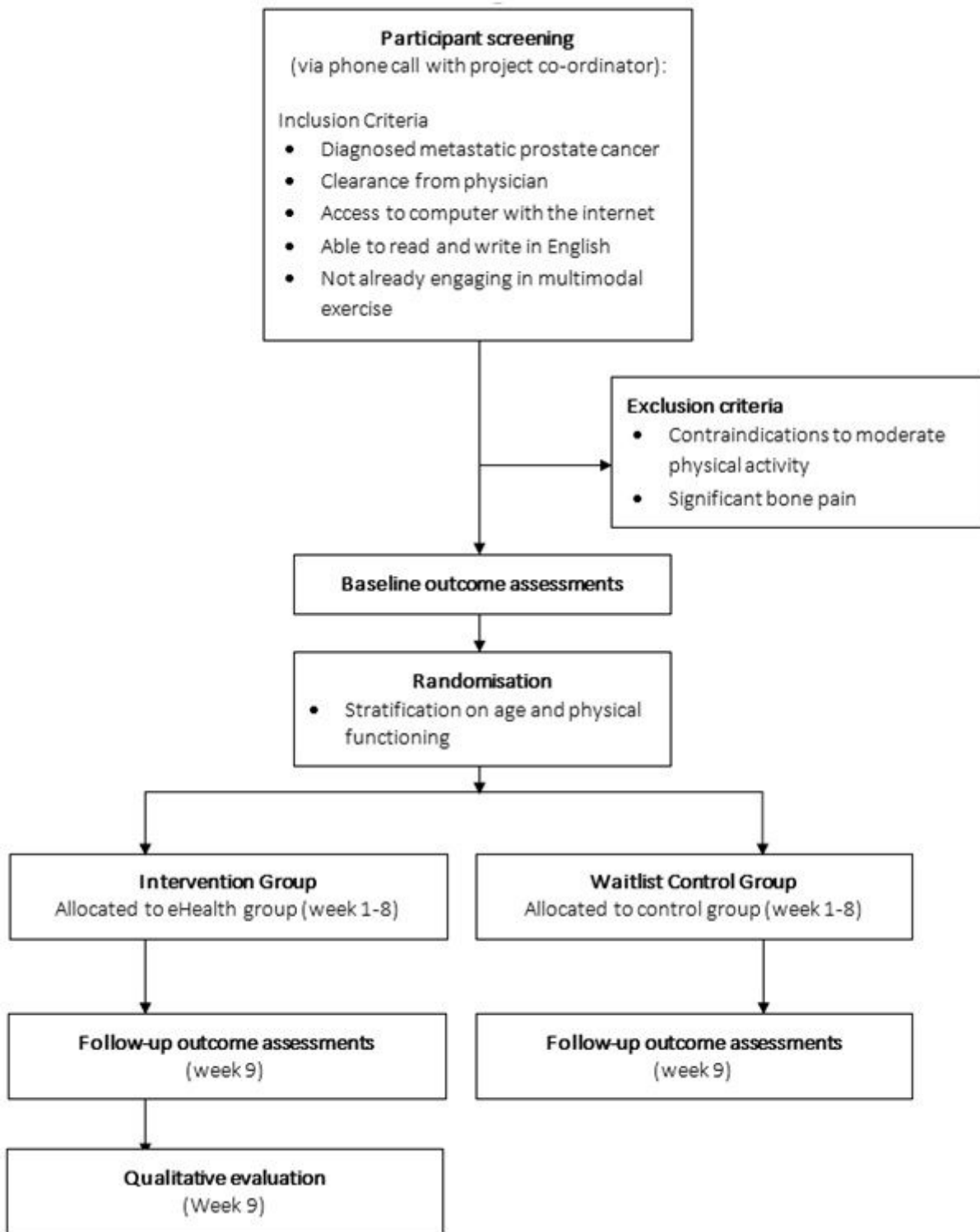
70. Thabane L, Lancaster G. A guide to the reporting of protocols of pilot and feasibility trials. *Pilot Feasibility Stud.* 2019;5(37).
71. Billingham SA, Whitehead AL, Julious SA. An audit of sample sizes for pilot and feasibility trials being undertaken in the United Kingdom registered in the United Kingdom Clinical Research Network database. *BMC Med Res Methodol.* 2013;13(1):104.
72. Viechtbauer W, Smits L, Kotz D, Budé L, Spigt M, Serroyen J, et al. A simple formula for the calculation of sample size in pilot studies. *J Clin Epidemiol.* 2015;68(11):1375–9.
73. Braun V, Clarke V. Using thematic analysis in psychology. *Qual Res Psychol.* 2006;3(2):77–101.
74. Blatch-Jones AJ, Pek W, Kirkpatrick E, Ashton-Key M. Role of feasibility and pilot studies in randomised controlled trials: a cross-sectional study. *BMJ Open.* 2018;8(9):e022233.
75. Parfitt G, Alrumh A, Rowlands AV. Affect-regulated exercise intensity: does training at an intensity that feels “good” improve physical health? *J Sci Med Sport.* 2012;15(6):548–53.
76. Short CE, James EL, Rebar AL, Duncan MJ, Courneya KS, Plotnikoff RC, et al. Designing more engaging computer-tailored physical activity behaviour change interventions for breast cancer survivors: lessons from the iMove More for Life study. *Support Care Cancer.* 2017;25(11):3569–85.
77. Bandura A. Health Promotion by social cognitive means. *Heal Educ Behav.* 2004;31(2):143–64.
78. Craike M, Gaskin CJ, Courneya KS, Fraser SF, Salmon J, Owen PJ, et al. Predictors of adherence to a 12-week exercise program among men treated for prostate cancer: ENGAGE study. *Cancer Med.* 2016;5(5):787–94.
79. Courneya KS, Segal RJ, Reid RD, Jones LW, Malone SC, Venner PM, et al. Three independent factors predicted adherence in a randomized controlled trial of resistance exercise training among prostate cancer survivors. *J Clin Epidemiol.* 2004;57(6):571–9.
80. Rebar AL, Elavsky S, Maher JP, Doerksen SE, Conroy DE. Habits predict physical activity on days when intentions are weak. *J Sport Exerc Psychol.* 2014;36(2):157–65.
81. van Stralen MM, de Vries H, Mudde AN, Bolman C, Lechner L. Determinants of initiation and maintenance of physical activity among older adults: a literature review. *Health Psychol Rev.* 2009;3:147–207.

## Figures

TIMEPOINT**	STUDY PERIOD				
	Enrolment	Baseline	Exercise Intervention		Close-out
		Week 0	Week 1	Week 8	Week 9
<b>ENROLMENT:</b>					
Eligibility screen	X				
Medical Clearance	X				
Informed consent	X				
Allocation		X			
<b>INTERVENTIONS:</b>					
<i>Exercise Guide Group</i>			←————→		
<i>Control: Waitlist</i>					
<b>ASSESSMENTS:</b>					
<i>Baseline Variables</i>		X			
<i>Follow-up variables</i>					X
<i>Qualitative Assessment</i>					X

**Figure 1**

SPIRIT figure of enrolments, interventions, and assessments.



**Figure 2**

Study flow diagram.



Figure 3

Screenshot of the Exercise Guide home page and one page of the My Exercise Plan module



Figure 4

Example of the video demonstrations (standing band row and squat) provided in Exercise Guide website.

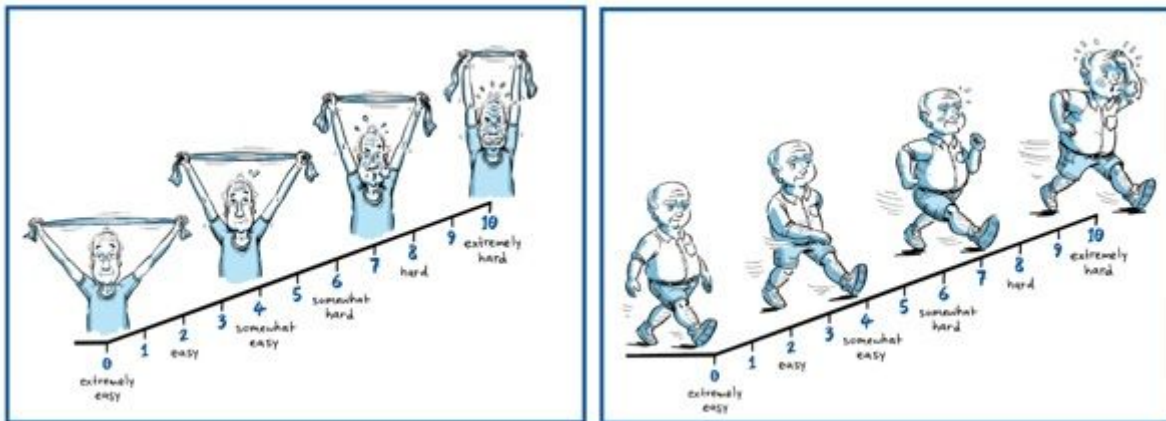


Figure 5

Modified illustrations of the OMNI exercise scale of perceived exertion, a) resistance training, b) aerobic training.

## Supplementary Files

This is a list of supplementary files associated with this preprint. Click to download.

- [SPIRITFillablechecklist.pdf](#)
- [Additionalfile3.docx](#)
- [Additionalfile2.docx](#)
- [Additionalfile1.docx](#)