

# Kidney biopsy in very elderly patients: indications, therapeutic impact and complications.

**Mathilde Fedi**

AP-HM, University Hospital of la Conception, Nephrology and kidney transplant centre, Marseille

**Mickaël Bobot**

Aix-Marseille Univ, C2VN, INSERM, INRAE, AP-HM Conception Hospital, Department of Nephrology

**Julia Torrents**

AP-HM, University Hospital of La Timone, Anatomical Pathology Laboratory, Marseille

**Pierre Gobert**

Rhône Durance Clinic, Medicine Department Avignon

**Eric Magnant**

Private Hospital of Provence, Nephrology Department, Aix-en-Provence

**Yannick Knefati**

Hospital of Sainte Musse, Nephrology Department, Toulon

**David Verhelst**

Hospital Général Henri Duffaut, Nephrology Department, Avignon

**Gaëtan Lebrun**

Hospital of Aix en Provence, Nephrology Department, Aix-en-Provence

**Valérie Masson**

Polyclinic "des fleurs", Nephrology Department, Ollioules

**Philippe Giaime**

Phocaeen Institute of Nephrology, Bouchard Clinic, ELSAN, Marseille

**Julien Santini**

Saint-Joseph Hospital, Nephrology Department, Marseille

**Stanislas Bataille**

Phocaeen Institute of Nephrology, Bouchard Clinic, ELSAN, Marseille

**Philippe Brunet**

Aix-Marseille Univ, C2VN, INSERM, INRAE, AP-HM Conception Hospital, Department of Nephrology

**Bertrand Dussol**

Aix-Marseille Univ, C2VN, INSERM, INRAE, AP-HM Conception Hospital, Department of Nephrology

**Stéphane Burtey**

Aix-Marseille Univ, C2VN, INSERM, INRAE, AP-HM Conception Hospital, Department of Nephrology

**Julien Mancini**

Aix Marseille Univ, APHM, Inserm, IRD, SESSTIM, University Hospital of la Timone, BLOSTIC service, Marseille

**Laurent Daniel**

AP-HM, University Hospital of La Timone, Anatomical Pathology Laboratory, Marseille

**Noémie Jourde-Chiche** (✉ [noemie.jourde@ap-hm.fr](mailto:noemie.jourde@ap-hm.fr))

Aix-Marseille Univ, C2VN, INSERM, INRAE, AP-HM Conception Hospital, Department of Nephrology

---

## Research Article

**Keywords:** Kidney biopsy, elderly patient, advanced age, acute kidney injury, nephrotic syndrome, glomerulonephritis, pathology, adverse events, treatment, survival

**Posted Date:** April 9th, 2021

**DOI:** <https://doi.org/10.21203/rs.3.rs-373642/v1>

**License:**  This work is licensed under a Creative Commons Attribution 4.0 International License.

[Read Full License](#)

---

# Abstract

**Background:** Few data is available on the risk/benefit balance of native kidney biopsy (KB) in very elderly patients.

**Methods:** Multicenter retrospective cohort study in the Aix-Marseille area: the results of KB and medical charts of all patients over 85 years biopsied between January 2010 and December 2018 were reviewed.

**Results:** 104 patients were included. Median age was 87 years. Indications for KB were: acute kidney injury (AKI) in 69.2% of patients, nephrotic syndrome (NS) with AKI in 13.5%, NS without AKI in 12.5%, and proteinuria in 4.8%. Median serum creatinine was 262 mmol/L, 21% of patients required dialysis at the time of KB. Significant bleeding occurred in 7 (6.7%) patients, requiring blood cell transfusion in 4 (3.8%), and radiological embolization in 1 (1%). The most frequent pathological diagnoses were: non-diabetic glomerular diseases (29.8%, including pauci-immune crescentic glomerulonephritis in 9.6%), hypertensive nephropathy (27.9%), acute interstitial nephritis (16.3%), renal involvement of hematological malignancy (8.7%), and acute tubular necrosis (6.7%). After KB, 51 (49%) patients received a specific treatment: corticosteroids (41.3%), cyclophosphamide (6.7%), rituximab (6.7%), bortezomib (3.8%), other chemotherapies (3.8%). Median overall survival was 31 months. Median renal survival was higher in patients without AKI ( $p=0.007$ ) or treated with corticosteroids ( $p=0.046$ ). Dialysis-free survival censored for death was higher in patients without AKI ( $p=0.019$ ), or treated ( $p=0.022$ ), especially with corticosteroids ( $p=0.006$ ).

**Conclusions:** KB can reveal a diagnosis with therapeutic impact even in very elderly patients. Severe bleeding was not frequent in this cohort, but KB may have not been performed in more vulnerable patients.

## Introduction

As life expectancy increases, the proportion of elderly patients with renal diseases raises (1) (2): the medical care of elderly patients is changing in developed countries (3). The life expectancy in France in 2019 was 85.6 years for women and 79.7 years for men. The median age of dialysis initiation was 70.9 years in 2018 (4) and 12.9% of prevalent patients on chronic dialysis were older than 85 years.

Kidney biopsy (KB) is an invasive diagnostic procedure aimed at identifying kidney diseases and guiding treatment to prevent progression to chronic kidney disease and end-stage kidney disease (ESKD). Nowadays, there is consensus of opinion that an age over 60–65 years is not a contraindication to kidney biopsy (KB) (5)(6) but the level of evidence for patients over 80–85 years of age remains low. There is a general reluctance (7) to perform KB in very elderly patients due to the risk of complications (mostly bleeding) but these patients may also take full advantage of optimized therapeutic strategies (8) (9)(10)(11).

To evaluate the risk/benefit balance of KB in very elderly patients, we analyzed the indications, adverse events and therapeutic impact of KB in a cohort of consecutive patients over 85 years of age.

## Materials And Methods

In this retrospective multicenter cohort study, we analyzed the medical charts of all patients aged  $\geq 85$  years who underwent a native kidney biopsy (KB) in the Aix-Marseille area between 2010 and 2018. The same pathologists (LD and JT), from the Laboratory of Pathology of the University Hospitals of Marseille (AP-HM), are in charge of all KB in this area, which allowed the screening of all cases.

All the procedures followed were in accordance with the Helsinki Declaration of 1975, as revised in 2000.

The French authority on data protection “Commission Nationale Informatique et Libertés” (CNIL) authorized data collection for this study (authorization number: 2211854).

For each case, clinical information was collected from the medical chart with the help of the referring nephrologist. Recorded data included:

- age, gender, history of hypertension, diabetes, progressive cancer or cardiovascular disease
- physical examination: blood pressure, edema, body mass index, extra-renal symptoms
- laboratory values: serum creatinine, estimated glomerular filtration rate (eGFR) using the MDRD formula, serum albumin, urine protein/creatinine ratio, presence of hematuria
- main indication for KB
- pathological diagnosis
- KB-related adverse events
- therapeutic intervention after KB
- kidney function evolution and date of dialysis initiation if applicable
- date of the last follow-up and date of death if applicable.

The following immunological tests were collected when available: antinuclear antibodies, anti-double-stranded DNA antibodies, anti-neutrophilic cytoplasmic antibody, anti-phospholipase A2 receptor (PLA2R) antibodies, rheumatoid factor, cryoglobulinemia, complement C3 and C4, and serum and urine electrophoresis. Serological tests for hepatitis B, hepatitis C, syphilis and HIV were also collected.

Indications for KB were classified as: acute kidney injury (AKI), nephrotic syndrome (NS), coexisting AKI and NS, proteinuria without AKI, and chronic kidney disease (CKD).

AKI was defined, according to the KDIGO guidelines, as an increase in serum creatinine of at least  $26.5 \mu\text{mol/L}$  within 48 hours, or as an increase in serum creatinine to  $\times 1.5$  time baseline (12). NS was defined as a proteinuria  $\geq 3.5 \text{ g/day}$  with serum albumin  $< 3 \text{ g/dL}$ . Significant proteinuria was defined as a urinary protein/creatinine ratio  $\geq 0.5 \text{ g/g}$ .

All KB were analyzed by the same renal pathologists (LD and JT), by light microscopy and immunofluorescence. For light microscopy, araldite-embedded sections were stained with Masson's trichrome and Jones silver impregnation (2 and 0.2  $\mu$ m sections respectively). For Immunofluorescence, 4  $\mu$ m frozen sections were incubated with anti-Immunoglobulins, C3, and C1q antibodies (The binding site, 1/50 dilutions, Birmingham, UK).

Descriptive statistics are presented as medians and interquartile ranges for continuous variables and as absolute values and percentages for categorical variables. The study endpoints were overall survival (OS) and renal survival, computed from the date of the biopsy to the date of the event (all-cause death for OS; all-cause death or dialysis for renal survival) or censored at the date of the last follow-up in event-free patients. In an additional analysis, dialysis-free survival censored for death was estimated. Median survival rates were estimated using the Kaplan-Meier method. Survival curves were plotted and compared using the log-rank test. All statistical tests were two-sided and the threshold for statistical significance was  $p < 0.05$ . Analyses were performed using IBM SPSS Statistics 20.0 (IBM Inc., New York, USA).

## Results

Between January 2010 and December 2018, a total of 114 very elderly patients underwent a native KB analyzed at the Laboratory of Pathology of AP-HM, which represents 2% of all native KB analyzed during the same period. Clinical data collection was insufficient for 10 patients, and 104 patients were included in this study. Follow-up data was available for 96 patients, who were considered in the survival analyses. The baseline characteristics of the study population are shown in **Table 1**.

The KB was performed during the course of a hospital stay in 73 patients, while 31 patients were hospitalized specifically for KB. The indications for KB are shown in Fig. 1. AKI was the most common indication (69.2% of patients), the other indications were NS with AKI (13.5%), NS without AKI (12.5%) and proteinuria (4.8%). No patient had a KB for the exploration of CKD alone. Significant proteinuria was present in 87.5% of patients, abnormal immunological tests in 27%, and extra-renal symptoms (mostly cutaneous lesions) in 17% of patients.

KB-related adverse events occurred in 7/104 (6.7%, 95%CI 2.8–13.4) patients and are detailed in **Table 2**. Four (3.8%) patients required blood transfusion, including one patient for whom a radiological embolization was performed. No death was related to KB.

Pathological results are displayed in **Table 3**. Non-diabetic glomerular diseases were diagnosed in 31 (29.8%) patients, including 10 (9.6%) with pauci-immune crescentic glomerulonephritis. Hypertensive nephropathy was diagnosed in 29 (27.9%) patients, and was the most frequent diagnostic in patients with proteinuria alone (4/5), as well as in patients with AKI (21/72) and in patients with NS and AKI (4/14). The most frequent diagnoses in patients with NS without AKI were membranous nephropathy (4/13 patients) and amyloidosis (AL or AA, 4/13 patients).

Overall, a disease likely to respond to a specific treatment was identified in 61 patients (58.7%, 95%CI 48.6–68.2%): 56.9% (41/72) of patients with AKI, 71.4% (10/14) of patients with NS and AKI, 69.2% (9/13) of patients with NS without AKI, and 20% (1/5) of patients with proteinuria.

A specific therapy was administered to 51 patients (49%, 95%CI 39.1–59.0%) following KB (**Table 2**), among whom: 6 patients with IgA nephropathy (including 3 Henoch-Schönlein purpura), 4 patients with minimal change disease or focal segmental glomerulosclerosis, and 13 patients with acute interstitial nephritis received corticosteroids; 9 patients with pauci-immune crescentic glomerulonephritis were treated with corticosteroids, associated with cyclophosphamide in 7 and with rituximab in 2; 3 patients with membranous nephropathy received rituximab; 1 patient received rituximab for B lymphoma with AL amyloidosis, and another 1 for membrano-proliferative GN; 4 patients received corticosteroids and bortezomib for AL amyloidosis (n = 1), myeloma cast nephropathy (n = 2) or monoclonal Ig light chain-associated Fanconi disease (n = 1).

Follow-up data were available for 96 patients (8 were lost to follow-up), their outcomes are displayed in Fig. 2. Median follow-up was 17 months (IQR 7–34 months), and follow-up ranged from 10 days (death of the patient) to 97 months. Sixteen (17%) patients died within 6 months after KB. Among the 18 patients who were depending on dialysis at the time of KB, 3 recovered and 1 died within 6 months. Among the 78 patients who were not on dialysis at the time of KB, 5 died within a month, 19 had a worsening of kidney function, 26 an improvement of kidney function, and 28 remained stable; 10 additional patients died within 6 months.

Overall survival is shown in Fig. 3A. Median survival was 32 months. The survival rates did not differ significantly between men and women, between treated and untreated patients, or between patients with or without AKI.

Renal survival (composite survival: no death and no dialysis) is shown in Fig. 3B. Median survival was 19 months. Renal survival was higher in patients without AKI ( $p = 0.007$ ) (Fig. 4A) and in patients treated with corticosteroids ( $p = 0.046$ ) (Fig. 4B). Dialysis-free survival, censored for death, is shown in Fig. 3C. Dialysis-free survival was higher in patients without AKI ( $p = 0.019$ ) (Fig. 4C), in treated patient ( $p = 0.022$ ) (Fig. 4D), and in patients treated by corticosteroids (Fig. 4E) ( $p = 0.006$ ).

## Discussion

We report here a large cohort of very elderly patients who underwent a native KB and show that the adverse events were not frequent and that the result of KB led to a specific therapeutic strategy in half of patients. In patients for whom no specific treatment was indicated, KB may have prevented the initiation of a potentially harmful treatment (such as corticosteroids). This work shows that for some patients, even if they are very old, the KB remains a useful procedure with therapeutic implications, especially in case of AKI and/or NS.

In the present cohort, the bleeding risk of KB was significant but not prohibitive (3% requiring transfusion), without KB-related death. The same level of complication was identified in other series of elderly patients (13). Even if lower rates of adverse events were reported in younger populations (14), several studies from the literature comparing the bleeding risks of KB in patients of different ages showed bleeding rates similar to the present cohort (15,16). In previous studies, the baseline serum creatinine level has been reported to predict bleeding complications after KB (15). Indeed, in the present cohort, all the patients with bleeding complications displayed AKI, and 3/7 were on dialysis. Halimi et al (17), in a large national French retrospective cohort study published in 2020, reported a major bleeding after native KB in 2,765 of 52,138 (5%) patients (blood transfusions: 5%; angiographic intervention: 0.4%; and nephrectomy: 0.1%). Independent predictors of bleeding in this cohort were gender, frailty index, anemia, and altered kidney function. Advanced age was not an independent risk factor for bleeding in this large cohort.

However, selection bias is likely in very elderly subjects, as clinicians may have refrained from performing a KB in the frailest patients. The question of the futility of performing an invasive procedure such as KB in very old patients, whose life expectancy is probably limited, may arise. Yet, although their median age was 87 years, only 16.7% (16/96) of patients died within 6 months after KB. For comparison purposes, the 1-year survival rate for incident patients on dialysis is 68% in France (4).

The diagnostic benefit of KB in the very elderly has been reported before (18, 19). Moutzouris et al (20) in an American cohort of 235 patients over 80 years of age, reported a therapeutic impact of KB in 67% of patients, particularly in those with AKI or NS. In the present cohort, the therapeutic impact of KB also depended on the indication for KB, patients with NS and/or AKI being the most likely to display a treatable condition, compared to patients with proteinuria alone.

AKI is associated with increased morbidity and mortality, especially in elderly subjects: the in-hospital mortality of elderly patients with AKI ranges from 15 to 40% (20, 21, 22, 23, 24). Pre-renal AKI, essentially due to volume depletion, and obstructive renal failure are the most common cause of AKI in elderly patients (23). Shock, nephrotoxic drugs and rhabdomyolysis are also frequent causes of AKI. But when the clinical context is far from obvious, or when a glomerulonephritis is suspected, a KB may be useful even in elderly patients to guide the therapeutic strategy (24). In the present cohort, as in other European cohorts (19,26), AKI was the most common indication for KB in elderly patients. On the contrary, NS was the main indication for KB in different series of elderly patients from Asia (50% of patients aged  $\geq 80$  in Japan (27) 69% of patients aged  $> 80$  years in China (6)).

Acute interstitial nephritis (AIN) was the second most frequent diagnosis after hypertensive nephropathy in this cohort. Most AIN were immuno-allergic, related to the prescription of proton pump inhibitors, vitamin K antagonist or antibiotics, which are often prescribed in the elderly. In this condition, KB allows the withdrawal of the drug, and sometimes the prescription of corticosteroids.

Pauci-immune crescentic GN was the third most frequent diagnosis in this cohort. A high frequency of crescentic GN in elderly patients was also reported in several studies from different countries (10% here, 14% in Spain (26) 11% in Japan (27) 13% in Italy (28)). KB is not always required for the diagnostic of

ANCA-associated vasculitis. Yet, it can confirm the diagnosis in patients without ANCA or with atypical clinical presentation and indicate the presence of active proliferative lesions likely to benefit from immunosuppressive treatment. Indeed, immunosuppressive therapy can improve kidney function and systemic disease in ANCA-associated vasculitis, even in elderly patients (29). In an American cohort of 78 patients over 80 years of age with biopsy-proven pauci-immune GN published in 2011 (9), the use of immunosuppressive therapy was associated with significantly lower risk of ESKD, death, and the combined outcome of ESKD or death.

KB can also be valuable for the diagnosis of haematological malignancies. In particular, AL amyloidosis without myeloma is not always detected on extra-renal tissue (such as minor salivary glands), and the detection of light chain amyloid deposits in a patient with NS can lead to the initiation of a chemotherapy which was not indicated on haematological parameters only. This was the case for 5 patients with hematological diseases from the present cohort.

There are some limitations to this study, in addition to its retrospective design. First, no data was available on the evaluation of frailty, autonomy and quality of life of the elderly patients included here. Second, no data was gathered on the clinical characteristics and outcomes of elderly patients with AKI and/or NS who were not proposed a KB. This hampers the evaluation of the “right indications for KB” and of the benefit of KB in the global population of elderly patients.

Yet, the focus of this work on very elderly patients ( $\geq 85$  years), and the comprehensive analysis of KB indications, results, and therapeutic impact, together with the information on patients’ outcomes, brings new information to the field.

In conclusion, this study provides detailed information on the benefits and risks of KB in a population of very elderly patients in France. The reasonable bleeding risk and the high proportion of pathological diagnoses with a therapeutic impact, especially in patients with AKI and/or NS, pleads for the interest of this invasive procedure in some very elderly patients, irrespective of their age.

## **Declarations**

### **Ethics approval and consent to participate**

The French authority on data protection “Commission Nationale Informatique et Libertés” (CNIL) authorized data collection for this study (authorization number: 2211854). The need for informed consent was waived by the Commission Nationale Informatique et Liberté, who analyzed the study application and authorized data collection according to the French legislation, under the autorisation number 2211854.

### **Consent for Publication**

Not Applicable.



## Availability of data and materials

The dataset supporting the conclusions of this article is included within the article.

## Competing interests

The authors declare that they have no competing interests.

## Funding

***The authors received no financial support for the research, authorship, and publication of this article.***

## Authors' contributions:

M.F., M.B., S.B., J.M. and N.J.C designed the study.

M.F. acquired data, with the substantial help of P.G, E.M, Y.K, D.V, G.L, V.M, P.G, J.S, S.B, P.B and B.D.

L.D and J.T. performed the pathological examination of the kidney biopsies.

M.F. wrote the first draft of the manuscript. S.B., M.B., J.T. and L.D. assisted in the interpretation of the results. J.M made the statistical analyses and prepared figures 4-5.

N.J.C. revised the final manuscript.

All authors read and approved the final manuscript.

## Acknowledgements

We thank Laurent Samson for his help with the kidney biopsy register.

## References

1. Rule AD: The Association Between Age and Nephrosclerosis on Renal Biopsy Among Healthy Adults. *Ann Intern Med* 152: 561, 2010
2. Nie P, Chen R, Luo M, Dong C, Chen L, Liu J, Hu L, Li B, Luo P: Clinical and Pathological Analysis of 4910 Patients Who Received Renal Biopsies at a Single Center in Northeast China. *BioMed Res Int* 2019: 1–9, 2019
3. Aucella F, Corsonello A, Leosco D, Brunori G, Gesualdo L, Antonelli-Incalzi R: Beyond chronic kidney disease: the diagnosis of Renal Disease in the Elderly as an unmet need. A position paper endorsed by Italian Society of Nephrology (SIN) and Italian Society of Geriatrics and Gerontology (SIGG). *J Nephrol* 32: 165–176, 2019
4. Le rapport du REIN 2018 est en ligne - Agence de la biomédecine [Internet]. 2020 Available from: <https://www.agence-biomedecine.fr/Le-rapport-du-REIN-2018-est-en-ligne> [cited 2020 Sep 23]

5. Sevillano AM, Diaz M, Caravaca-Fontán F, Barrios C, Bernis C, Cabrera J, Calviño J, Castillo L, Cobelo C, Delgado-Mallén P, Espinosa M, Fernandez-Juarez G, Fernandez-Reyes MJ, Garcia-Osuna R, Garcia P, Goicoechea M, Gonzalez-Cabrera F, Guzmán DA, Heras M, Martín-Reyes G, Martinez A, Olea T, Peña JK, Quintana LF, Rabasco C, López Revuelta K, Rodas L, Rodriguez-Mendiola N, Rodriguez E, San Miguel L, Sanchez de la Nieta MD, Shabaka A, Sierra M, Valera A, Velo M, Verde E, Ballarin J, Noboa O, Moreno JA, Gutiérrez E, Praga M, on behalf of the Spanish Group for the Study of Glomerular Diseases (GLOSEN): IgA Nephropathy in Elderly Patients. *Clin J Am Soc Nephrol* 14: 1183–1192, 2019
6. Xiong M, Wang L, Liu X, Yue S, Dong J, Li Y, Su L, Wang G, Xu X, Nie S, Hou FF: Kidney Biopsies in Elderly Chinese Patients: A Nationwide Survey. *Am J Kidney Dis* S0272638620305837, 2020
7. Luciano RL, Moeckel GW: Update on the Native Kidney Biopsy: Core Curriculum 2019. *Am J Kidney Dis* 73: 404–415, 2019
8. Planchais M, Brilland B, Demiselle J, Besson V, Dureau A, Croué A, Cousin M, Subra J-F, Augusto J-F, Garnier A-S: Renal biopsy in very elderly patients (over 80 years): clinical presentation, histological diagnosis, and long-term outcome. *Int Urol Nephrol* 52: 721–729, 2020
9. Bomback AS, Appel GB, Radhakrishnan J, Shirazian S, Herlitz LC, Stokes B, D'Agati VD, Markowitz GS: ANCA-associated glomerulonephritis in the very elderly. *Kidney Int* 79: 757–764, 2011
10. Dhaun N, Bellamy CO, Cattran DC, Kluth DC: Utility of renal biopsy in the clinical management of renal disease. *Kidney Int* 85: 1039–1048, 2014
11. Yoon HE, Shin MJ, Kim YS, Choi BS, Kim BS, Choi YJ, Kim YO, Yoon SA, Kim YS, Yang CW: Clinical Impact of Renal Biopsy on Outcomes in Elderly Patients with Nephrotic Syndrome. *Nephron Clin Pract* 117: c20–c27, 2011
12. Notice. *Kidney Int Suppl* 2: 1, 2012
13. Uezono S, Hara S, Sato Y, Komatsu H, Ikeda N, Shimao Y, Hayashi T, Asada Y, Fujimoto S, Eto T: Renal Biopsy in Elderly Patients: A Clinicopathological Analysis. *Ren Fail* 28: 549–555, 2006
14. Bataille S, Jourde N, Daniel L, Mondain J-R, Faure M, Gobert P, Alcheikh-Hassan Z, Lankester M, Giaime P, Gaudart J, Dussol B, Berland Y, Burtey S: Comparative safety and efficiency of five percutaneous kidney biopsy approaches of native kidneys: a multicenter study. *Am J Nephrol* 35: 387–393, 2012
15. Whittier WL, Korbet SM: Timing of complications in percutaneous renal biopsy. *J Am Soc Nephrol JASN* 15: 142–147, 2004
16. Parrish AE: Complications of percutaneous renal biopsy: a review of 37 years' experience. *Clin Nephrol* 38: 135–141, 1992
17. Halimi J-M, Gatault P, Longuet H, Barbet C, Bisson A, Sautenet B, Herbert J, Buchler M, Grammatico-Guillon L, Fauchier L: Major Bleeding and Risk of Death after Percutaneous Native Kidney Biopsies: A French Nationwide Cohort Study. *Clin J Am Soc Nephrol CJN*.14721219, 2020
18. Kitterer D, Gürzing K, Segerer S, Alscher MD, Amann K, Braun N, Latus J: Diagnostic impact of percutaneous renal biopsy. *Clin Nephrol* 84 (2015): 311–322, 2015

19. Nair R, Bell JM, Walker PD: Renal biopsy in patients aged 80 years and older. *Am J Kidney Dis* 44: 618–626, 2004
20. Moutzouris D-A, Herlitz L, Appel GB, Markowitz GS, Freudenthal B, Radhakrishnan J, D'Agati VD: Renal Biopsy in the Very Elderly. *Clin J Am Soc Nephrol* 4: 1073–1082, 2009
21. Li Q, Zhao M, Du J, Wang X: Outcomes of renal function in elderly patients with acute kidney injury. *Clin Interv Aging* 12: 153–160, 2017
22. Akposso K, Hertig A, Couprie R, Flahaut A, Alberti C, Karras GA, Haymann JP, Costa De Beauregard MA, Lahlou A, Rondeau E, Sraer JD: Acute renal failure in patients over 80 years old: 25-years' experience. *Intensive Care Med* 26: 400–406, 2000
23. Liu J-Q, Cai G-Y, Liang S, Wang W-L, Wang S-Y, Zhu F-L, Nie S-S, Feng Z, Chen X-M: Characteristics of and risk factors for death in elderly patients with acute kidney injury: a multicentre retrospective study in China. *Postgrad Med J* 94: 249–253, 2018
24. Coca SG: Acute kidney injury in elderly persons. *Am J Kidney Dis Off J Natl Kidney Found* 56: 122–131, 2010
25. Brown CM, Scheven L, O'Kelly P, Dorman AM, Walshe JJ: Renal histology in the elderly: indications and outcomes. *J Nephrol* 25: 240–244, 2012
26. Verde E, Quiroga B, Rivera F, López-Gómez JM: Renal biopsy in very elderly patients: data from the Spanish Registry of Glomerulonephritis. *Am J Nephrol* 35: 230–237, 2012
27. Yokoyama H, Sugiyama H, Sato H, Taguchi T, Nagata M, Matsuo S, Makino H, Watanabe T, Saito T, Kiyohara Y, Nishi S, Iida H, Morozumi K, Fukatsu A, Sasaki T, Tsuruya K, Kohda Y, Higuchi M, Kiyomoto H, Goto S, Hattori M, Hataya H, Kagami S, Yoshikawa N, Fukasawa Y, Ueda Y, Kitamura H, Shimizu A, Oka K, Nakagawa N, Ito T, Uchida S, Furuichi K, Nakaya I, Umemura S, Hiromura K, Yoshimura M, Hirawa N, Shigematsu T, Fukagawa M, Hiramatsu M, Terada Y, Uemura O, Kawata T, Matsunaga A, Kuroki A, Mori Y, Mitsuiki K, Yoshida H: Renal disease in the elderly and the very elderly Japanese: analysis of the Japan Renal Biopsy Registry (J-RBR). *Clin Exp Nephrol* 16: 903–920, 2012
28. Rollino C, Ferro M, Beltrame G, Quattrocchio G, Massara C, Quarello F, Roccatello D: Renal biopsy in patients over 75: 131 cases. *Clin Nephrol* 82 (2014): 225–230, 2014
29. Jefferson JA: Treating Elderly Patients with ANCA-Associated Vasculitis. *Clin J Am Soc Nephrol* 10: 1110–1113, 2015

## Tables

**Table 1: Baseline characteristics of the elderly patients (aged  $\geq 85$  years) included in this cohort.**

	N = 104
Age, years	87 [86-89]
Male	64 (61.5)
BMI, kg/m <sup>2</sup>	25 [21-28]
Hypertension	70 (67.3)
Diabetes mellitus	24 (23.1)
Progressive cancer	26 (25.0)
Cardiovascular disease	66 (63.5)
Serum creatinine, $\mu$ mol/L	262 [159-416]
eGFR, ml/min/1.73m <sup>2</sup>	16 [8-27]
Dialysis requirement	22 (21.2)
UPCR, g/g	1.4 [0.6-4.00]
Hematuria	43 (41.3)
Serum albumin, g/dL	28 [21-52.5]

(Values are expressed as median [IQR] or number (%))

(BMI, body mass index; eGFR, estimated glomerular filtration rate; UPCR Urinary protein to creatinine ratio)

**Table 2: Kidney biopsy-related adverse events, and therapeutic impact of kidney biopsy.**

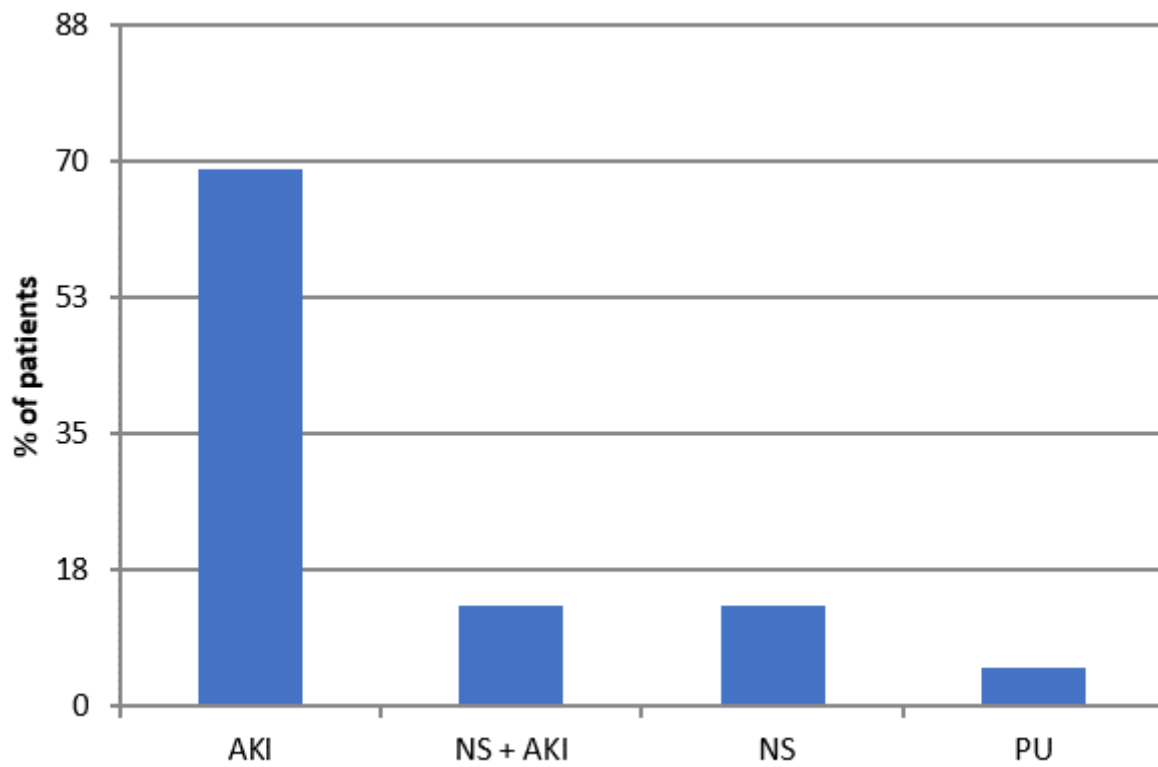
	n (%)
<b>KB-related adverse events</b>	<b>7 (6.7)</b>
Mild bleeding or lumbar pain	3 (2.9)
Bleeding requiring blood transfusion	3 (2.9)
Bleeding requiring blood transfusion and radiological embolization	1 (0.9)
<b>Therapeutic intervention after KB</b>	<b>51 (49.0)</b>
corticosteroids	43 (41.3)
IV cyclophosphamide	7 (6.7)
rituximab	7 (6.7)
bortezomib	4 (3.8)
Other chemotherapy	4 (3.8)

**Table 3: Pathological diagnoses in the 104 native kidney biopsies.**

	n	(%)
<b>Vascular diseases</b>	<b>33</b>	<b>(31.7)</b>
Hypertensive nephropathy	29	(27.9)
Cholesterol embolism	2	(1.9)
Renal Infarction	1	(1)
Scleroderma renal crisis	1	(1)
<b>Tubulo-Interstitial diseases</b>	<b>25</b>	<b>(24)</b>
Acute interstitial nephritis	17	(16.3)
Acute tubular necrosis	7	(6.7)
Nephrocalcinosis	1	(1)
<b>Glomerular diseases</b>	<b>31</b>	<b>(29.8)</b>
Pauci immune crescentic GN	10	(9.6)
Membranous nephropathy	6	(5.8)
IgA nephropathy	6	(5.8)
Membrano-proliferative GN	3	(2.8)
Minimal change disease	2	(1.9)
Focal segmental glomerular sclerosis	2	(1.9)
AA amyloidosis	2	(1.9)
<b>Hematological diseases</b>	<b>9</b>	<b>(8.7)</b>
AL amyloidosis	3	(2.8)
Light chain deposition disease	1	(1)
Myeloma cast nephropathy	2	(1.9)
Light chain tubular inclusions (Fanconi)	1	(1)
Leukemia (CMML) with blastic infiltration	1	(1)
Lymphomatous infiltration (NHL)	1	(1)
<b>Diabetic kidney disease</b>	<b>3</b>	<b>(2.9)</b>
<b>Non-contributive biopsy</b>	<b>3</b>	<b>(2.9)</b>

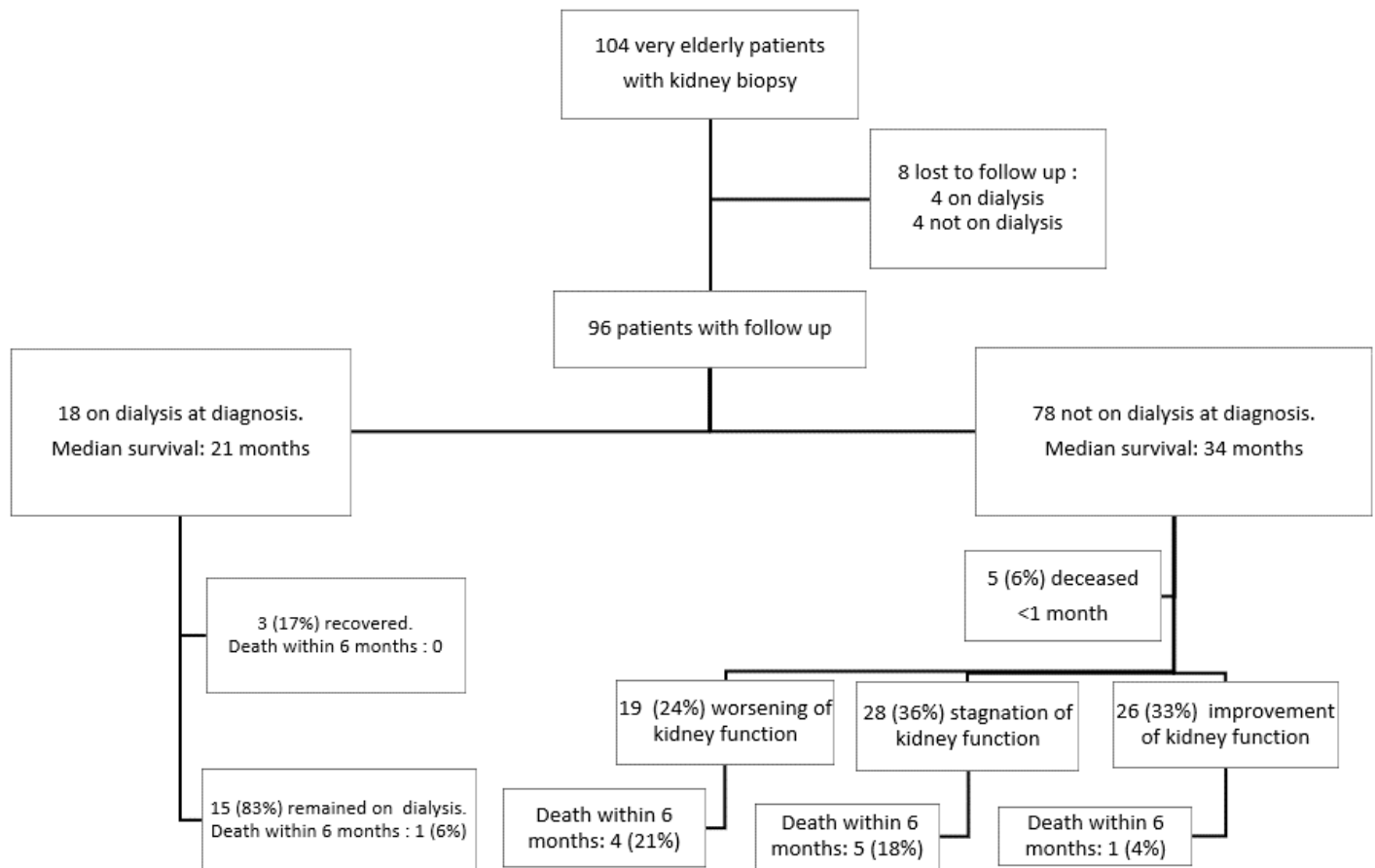
GN, Glomerulonephritis; CMML, Chronic myelomonocytic leukemia; NHL, Non-Hodgkin lymphoma.

## Figures



**Figure 1**

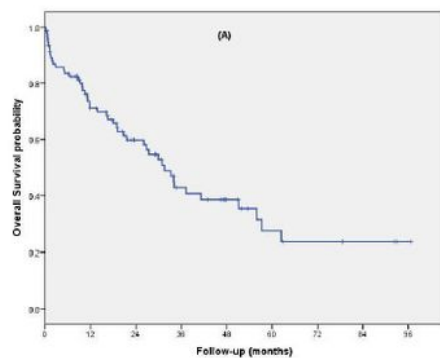
Indication for kidney biopsy in the 104 very elderly patients. (AKI, acute kidney injury; NS, nephrotic syndrome; PU, proteinuria)



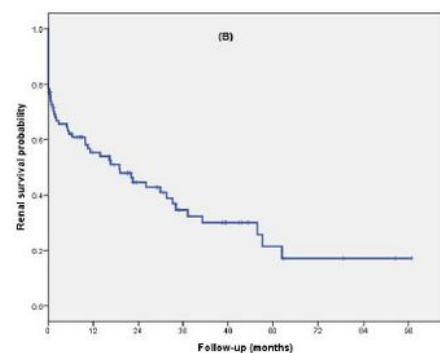
**Figure 2**

Patient outcome.

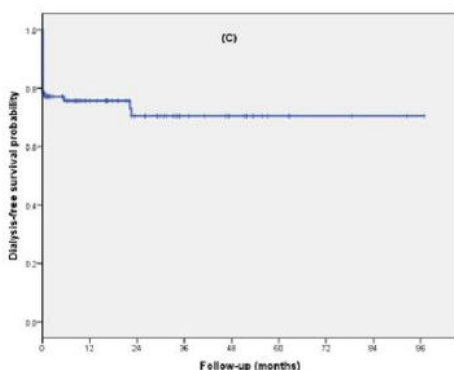




Time	6 months	1 year	2 years	3 years	4 years	5 years
number at risk	74	54	35	19	13	6
% surviving patients	82	70	58	40	36	23



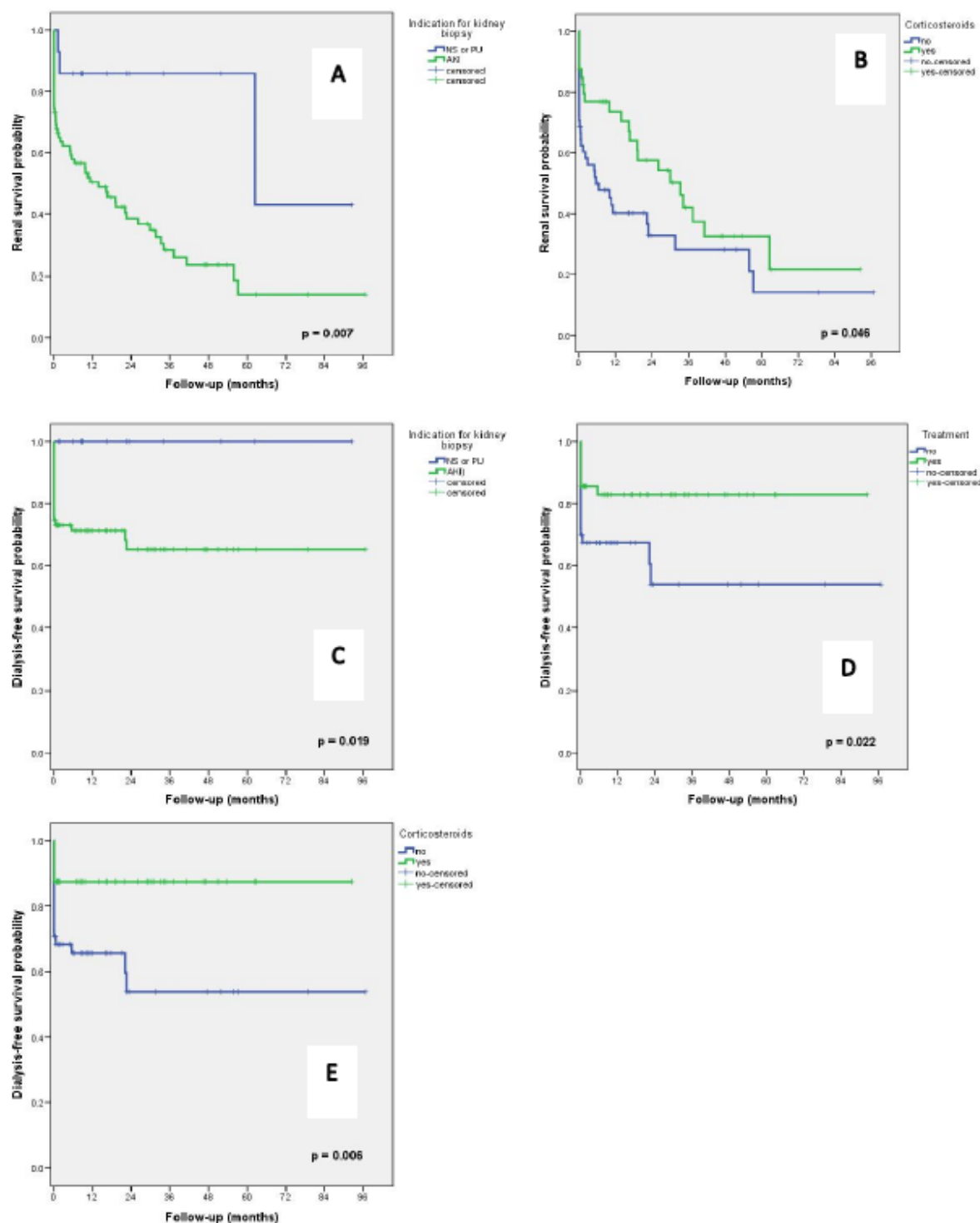
time	6 months	1 year	2 years	3 years	4 years	5 years
number at risk	52	39	24	14	10	4
% surviving patients	62	55	43	32	30	17



time	6 months	1 year	2 years	3 years	4 years	5 years
number at risk	52	39	25	14	10	4
% surviving patients	75	73	70	70	70	70

**Figure 3**

Kaplan Meier survival analyses. A) Overall survival. B) Renal survival. C) Dialysis-free survival (censored for death).



**Figure 4**

Comparison of Kaplan Meier survival analyses. A) Comparison of renal survival between patients with or without AKI. B) Comparison of renal survival between patients treated or not with corticosteroids. C) Comparison of dialysis-free survival (censored for death) between patients with and without AKI. D) Comparison of dialysis-free survival between patients who received or did not receive a specific

treatment. E) Comparison of dialysis-free survival (censored for death) between patients treated or not with corticosteroids.