

Y chromosome genes may play roles in directed differentiation of human embryonic stem cells.

Farzaneh Khani ^{a, b}, Simin Nafian Dehkordi ^{a, b}, Sepideh Mollamohammadi ^c, Shiva Nemati ^b, Bahare Shokoohian ^b, Mehdi Alikhani ^b, Seyedeh Nafiseh Hassani ^c, Hossein Baharvand ^{c, d}, Hamid Reza Soleimanpour-lichaei ^{a*}, Ghasem Hosseini Salekdeh ^{b, e*}

^a Department of Stem Cell and Regenerative Medicine, Institute of Medical Biotechnology, National Institute of Genetic Engineering & Biotechnology (NIGEB), 14965-161 Tehran, Iran

^b Department of Molecular Systems Biology, Cell Science Research Center, Royan Institute for Stem Cell Biology and Technology, ACECR, 16656-59911 Tehran, Iran

^c Department of Stem Cells and Developmental Biology, Cell Science Research Center, Royan Institute for Stem Cell Biology and Technology, ACECR, 16656-59911 Tehran, Iran

^d Department of Developmental Biology, University of Science and Culture, 13145-871 Tehran, Iran

^e Department of Molecular Sciences, Macquarie University, Sydney, NSW, Australia

** Corresponding Authors*

Hamid Reza Soleimanpour lichaei, Department of Stem Cell and Regenerative Medicine, Institute of Medical Biotechnology, National Institute of Genetic Engineering & Biotechnology (NIGEB), Tehran, P.O.Box: 14965-161, Iran; Email: hrs@nigeb.ac.ir.

Ghasem Hosseini Salekdeh, Department of Molecular Systems Biology, Cell Science Research Center, Royan Institute for Stem Cell Biology and Technology, ACECR, Tehran 16635-148, Iran. Tel: +98 21 23562512. Email: hsalekdeh@gmail.com; salekdeh@royaninstitute.org

Original Images of western blots and other electrophoretic results

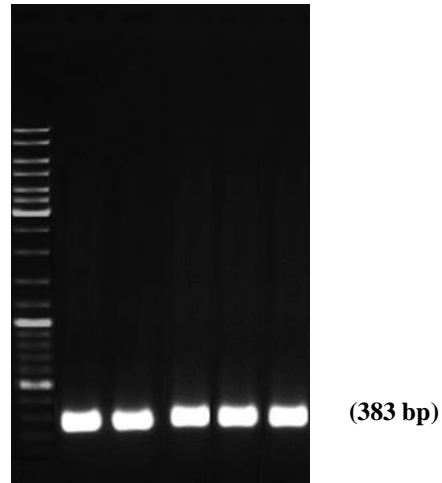


Fig 2. A) Gel electrophoresis by PCR product. *HSFY1*, *RBMY1A1*, *RPS4Y1* and *SRY* over-expressing Cell lines.

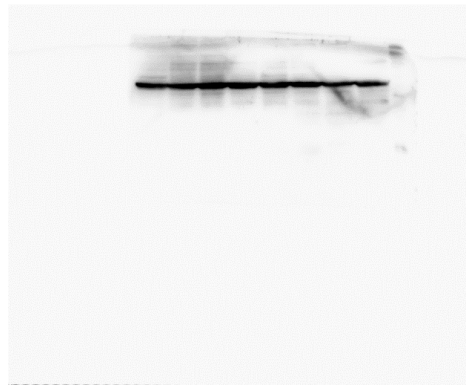


Fig2. D) Beta Actin

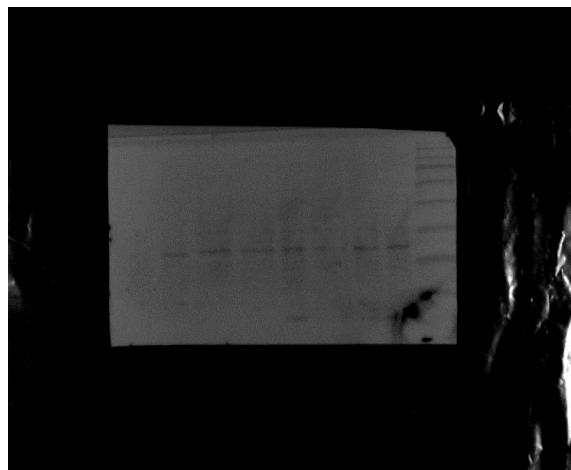


Fig.2 D) SRY Protein (25 KD)

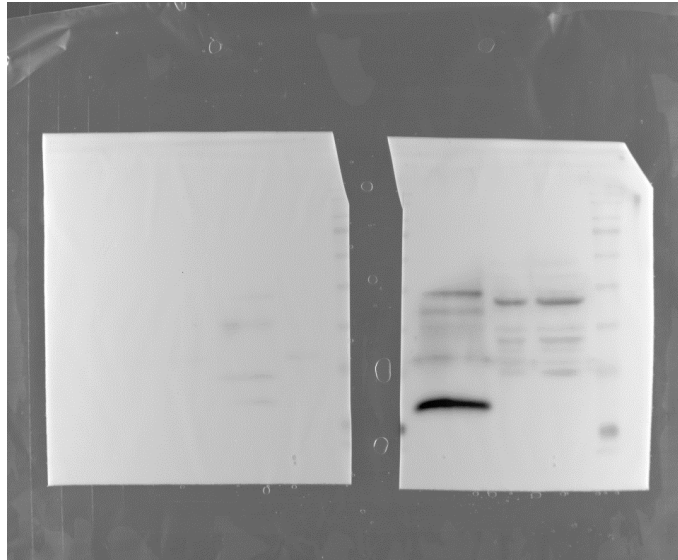


Fig.2 D) SRY(Left/25KD), HSFY1(Right/43KD)

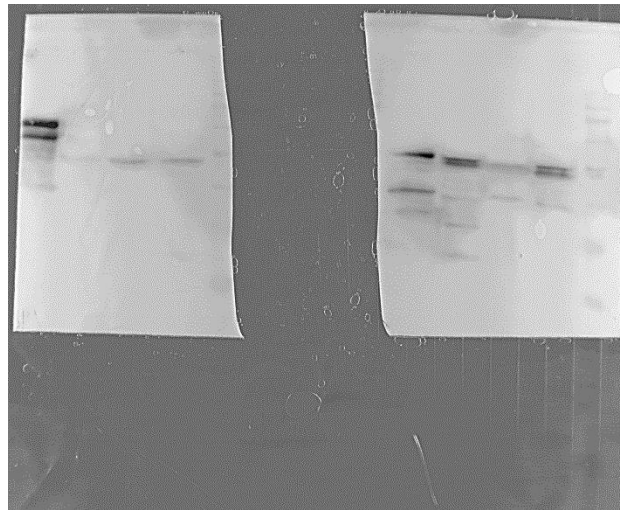


Fig.2 D) RBMY1 (Left/55KD), HSFY1(Right/43KD)

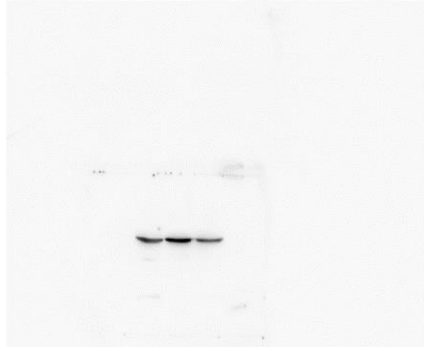


Fig.2 D) RBMY1(55KD)

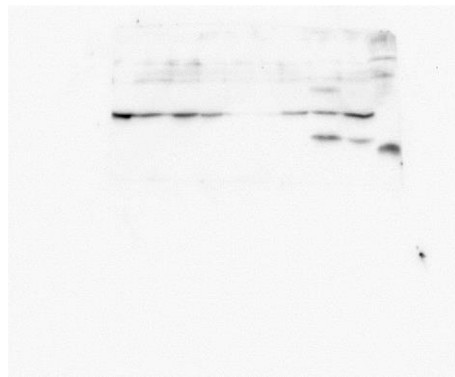


Fig.3 E) RPS4Y1(29 KD)