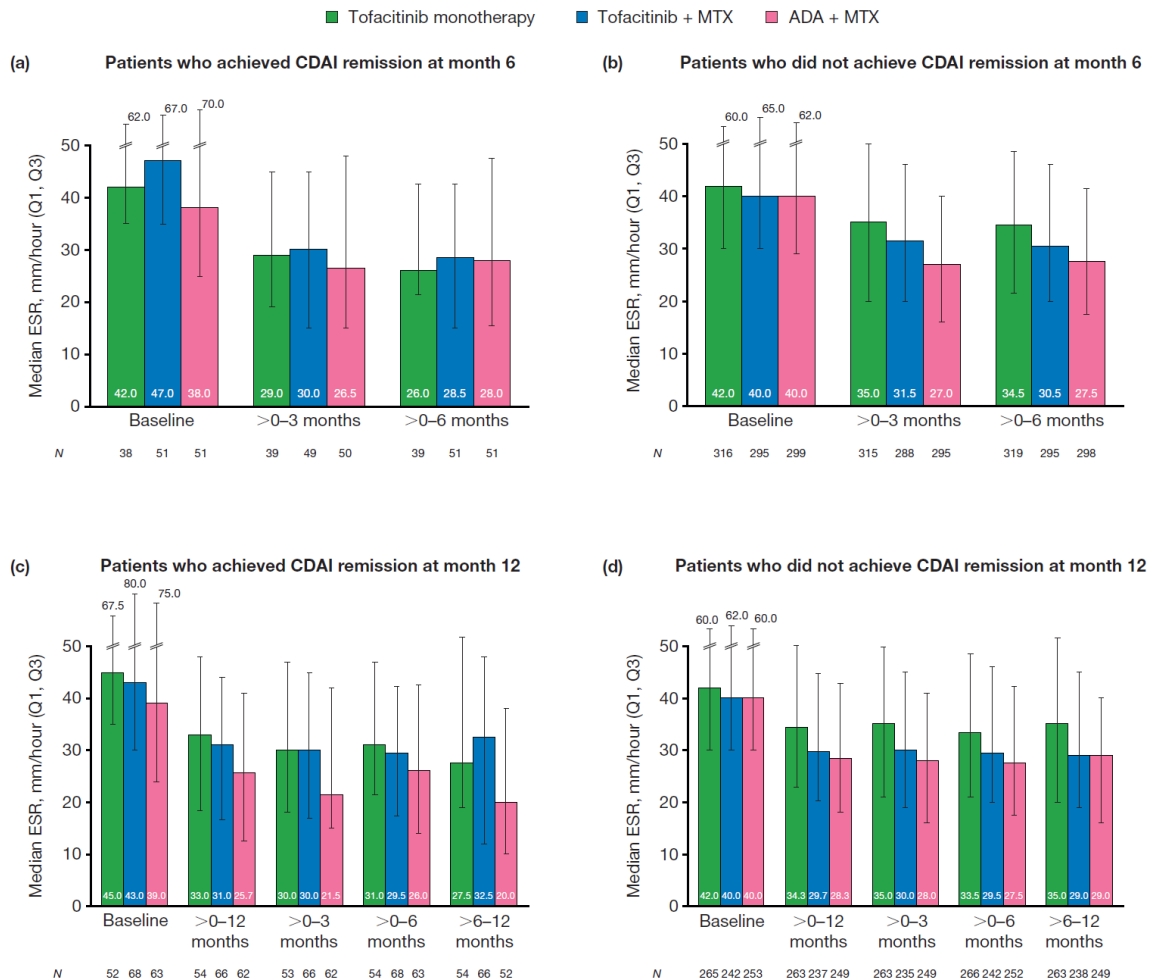


Additional file 1

Fig. S1 Median ESR levels by time period, categorized by CDAI remission status at months 6 and 12



Plots show median ESR levels by time period for (a) patients who achieved CDAI remission (≤ 2.8) at month 6, (b) patients who did not achieve CDAI remission (> 2.8) at month 6, (c) patients who achieved CDAI remission (≤ 2.8) at month 12, and (d) patients who did not achieve CDAI remission (> 2.8) at month 12. Error bars represent the interquartile range (Q1–Q3). ADA adalimumab, CDAI Clinical Disease Activity Index, ESR erythrocyte sedimentation rate, MTX methotrexate, Q1 25th percentile, Q3 75th percentile