

Effectiveness of the Healthy Start-Départ Santé approach on physical activity, healthy eating and fundamental movement skills of preschoolers attending childcare centres: A randomized controlled trial

Anne Leis (✉ Anne.Leis@usask.ca)

University of Saskatchewan College of Medicine

Stéphanie Ward

Faculté des Sciences de la Santé et des services communautaires, Université de Moncton

Hassan Vatanparast

University of Saskatchewan, College of Pharmacy and Nutrition

Louise Humbert

University of Saskatchewan College of Kinesiology

Amanda Froehlich Chow

University of Saskatchewan College of Kinesiology

Nazeem Muhajarine

University of Saskatchewan, College of Medicine

Rachel Engler-Stringer

University of Saskatchewan, College of Medicine

Mathieu Bélanger

Université de Sherbrooke Faculté des Sciences

Research article

Keywords: Preschool; Physical activity; Eating behaviours; Food intake; Fundamental movement skills; Population health intervention

Posted Date: November 15th, 2019

DOI: <https://doi.org/10.21203/rs.2.12703/v2>

License:  This work is licensed under a Creative Commons Attribution 4.0 International License. [Read Full License](#)

Version of Record: A version of this preprint was published at BMC Public Health on April 19th, 2020. See the published version at <https://doi.org/10.1186/s12889-020-08621-9>.

Abstract

Background: Since young children spend approximately 30 hours per week in early childcare centres (ECC), this setting is ideal to foster healthy behaviors. This study aimed to assess the effectiveness of the Healthy Start-Départ Santé (HSDS) randomized controlled trial in increasing physical activity (PA) levels and improving healthy eating and fundamental movement skills in preschoolers attending ECC.

Methods: Sixty-one ECC were randomly selected and allocated to either the usual practice (n=30; n=433 children) or intervention group (n=31; n=464 children). The HSDS intervention group was provided a 3-hour on-site training for childcare educators which aimed to increase their knowledge and self-efficacy in promoting healthy eating, PA and development of fundamental movement skills in preschoolers. PA was measured during childcare hours for five consecutive days using the Actical accelerometer. Preschoolers' fundamental movement skills were assessed using the standard TGMD-II protocol and POMP scores. Food intake was evaluated using digital photography-assisted weighted plate waste at lunch, over two consecutive days. All data were collected prior to the HSDS intervention and again 9 months later. Mixed-effect models were used to analyse the effectiveness of the HSDS intervention on all outcome measures.

Results: Total number of children who provided valid data at baseline and endpoint for PA, food intake and fundamental movement skills were 259, 670 and 492, respectively. Children in the HSDS intervention group had, on average, a 3.33 greater point increase in their locomotor motor skills scores than children in the control group ($\beta=3.33$, $p=0.009$). No significant differences in effects were observed for object control, PA and food intake. However, results demonstrated a marginal increase in portions of fruits and vegetables served in the intervention group compared to control group ($\beta=0.06$, $p=0.05$).

Conclusion: Locomotor skills showed a significant improvement in the intervention group compared to the control one. Although modest beneficial effects of HSDS were found, most outcome indicators progressed in a direction favouring the HSDS intervention compared to the usual practice group.

Background

It is well documented that early childhood (0–5 years) sets the foundation for a lifetime of health and well-being.(1) However, research indicates that very young Canadian children are not active enough(2) and may not have a sufficiently nutritionally balanced diet for optimal growth and development.(3) Given that young children in many developed countries spend approximately 30 hours per week in early childcare centres (ECC),(4) this setting has been identified as an ideal environment for implementing strategies to foster the development of healthy behaviors.(5,6)

While much effort has already been invested in either improving physical activity or healthy eating among school age children and preschoolers, interventions have rarely assessed both behaviours simultaneously. A key aspect of increasing physical activity is the development of fundamental movement skills (e.g., object control and locomotor skills); to date this has often been overlooked. Several reviews have also highlighted the limited impact of single domain interventions. (7,8) For example, one systematic review reports that the least successful interventions in improving physical activity levels, dietary behaviours, or body composition focused on only one or two outcomes; conversely, the most successful interventions aimed to positively influence several factors, such as knowledge, abilities and competence.(9) Accordingly, interventions should be grounded in comprehensive behaviour change models and include a multipronged approach.(10) Interventions promoting healthy weights in children should therefore, encompass a broad spectrum of concerted actions targeting both physical activity and healthy eating(6) and should be based on best available knowledge from research and practice.(8,11)

Built on a socioecological model, Healthy Start-Départ Santé (HSDS) was developed following the principles described above and includes strategies for each level of influence. HSDS is a multilevel, intersectoral population health intervention designed to empower childcare educators to enhance physical activity, fundamental movement skills and healthy eating opportunities within the daily routine of preschoolers (3 to 5 years old) who attend ECC (i.e., licenced childcare centres or preschools). HSDS adheres to the population health approach which posits that to positively influence population-level health outcomes, interventions must take into account the wide range of health determinants, (12) recognize the importance and complexity of potential interplay among these determinants, and reduce social and material inequities.(13) Further, they must rely on the best available evidence, stimulate intersectoral collaborations, and provide opportunities for all potential stakeholders to be meaningfully engaged from the onset to deployment.(13)

The HSDS evaluation reported here aimed to assess the effectiveness of the HSDS intervention in increasing physical activity levels and healthy eating as well as improving fundamental movement skills in preschoolers attending ECC. It was hypothesized that, in comparison to a control group (usual practice), exposure to the HSDS intervention would result in increased opportunities for physical activity and healthy eating, which in turn would lead to increased physical activity levels, improved fundamental movement skills and healthier eating among preschoolers.

Methods

Trial design

This study used an ECC-based cluster randomized controlled trial design, where ECC were randomly allocated to either the intervention (HSDS) or control group (usual practice). A complete description of the trial protocol was published in 2016 and is registered ([ClinicalTrials.gov #NCT02375490](https://clinicaltrials.gov/ct2/show/study/NCT02375490)).(14) The study protocol and analysis plan were implemented as planned, however, modifications were made in the method used to score fundamental movement skills as explained below. The study received ethics approval from Health Canada, the University of Saskatchewan, and the Université de Sherbrooke.

Participants

Provincial registries of licenced ECC in Saskatchewan and New Brunswick, Canada, were used as sampling frames. ECC were excluded if they had previously received a physical activity or nutrition intervention, did not prepare and provide lunch to children, and for feasibility reasons, if they had less than 20 children enrolled full-time in a preschool program. ECC were stratified according to province, geographical location (urban/rural)(15) and their respective school division (English or French). Once stratification was completed, project coordinators randomly selected ECC using the Stata SE statistical sequence generator software. ECC were then contacted, provided information about the study, and invited to participate. ECC which agreed to participate in the study were sent a consent form, as well as parental consent forms to recruit preschoolers attending their ECC on a full-time basis. If the ECC declined, they were replaced by another randomly selected ECC from the same stratum. Once informed consent was obtained, simple randomization was used to allocate ECC to either the intervention or control group with a 1:1 ratio. Parents of all participating children provided signed, informed consent. Prior to initiating recruitment and based on pilot work, we estimated that 700 children (350 per group) would provide 80% power to detect a 10% between-group difference in outcomes, considering a within-group standard deviation of 40%, a two-sided α of 0.05, an intra-class correlation of 0.02 and an estimated multiple correlation of 0.15 between the intervention and other explanatory variables. To compensate for losses to follow-up, our target was to recruit a minimum of 735 participants (5% over the 700 calculated).

Intervention

The HSDS intervention was delivered over the course of 6 to 8 months, and included a 3-hour on-site training, resources (i.e. an implementation manual, physical activity and healthy eating manuals, an active play equipment kit), and on-going on-line and telephone support and monitoring; centres were also offered a tailored 90-minute booster session at the midway point of the intervention period. ECC randomly allocated to the control group continued their usual practice and were not provided with any training, resources or support. However, once the study was completed, all childcare centres from the control group were offered the HSDS intervention.

On-site training and resources— All ECC allocated to the intervention group were provided with a 3-hour on-site training, which was offered to childcare educators, directors and cooks after work hours. This training session was delivered by trained specialists (dietitians, kinesiologists or other experts in the fields of nutrition and physical activity), and covered best practices in physical activity and healthy eating in early childhood, including topics such as the importance of physical activity and healthy eating for preschoolers, how to easily integrate physical activity and healthy eating in the ECC's daily routine, how to introduce and encourage children to try new and healthy foods, and how to help children develop their fundamental movement skills. ECCs were also provided with the evidence-based LEAP BC™-GRANDIR CB resources which included a physical activity and healthy eating manual. In addition, a New Brunswick developed fundamental movement skills manual (Active Kids Toolkit Foundations for All®), a kit with active play equipment, an implementation manual, and other complementary resources for childcare staff and families were shared with all participating sites.

On-going support and monitoring—ECC were encouraged to identify a *Healthy Star*, which was a childcare staff member who was a champion for physical activity and healthy eating and who was a knowledge-sharing contact between the ECC and the HSDS coordinators. The HSDS team checked-in with the intervention ECC on a regular basis by phone or email and provided them with support and encouragement. Monthly newsletters were also sent to all intervention ECC, which included tips on how to get children moving or on how to improve healthy eating. ECC were encouraged to share these newsletters with parents.

Booster session— A 90-minute booster session was offered to all intervention ECC approximately three months after the initial training. This on-site session was personalized based on challenges identified by each individual ECC, and was offered as a staff meeting, an in-class demonstration, a parent presentation, a cooking class, or a staff mini-training.

Outcomes

Each participating ECC was visited by two trained research assistants over two weekdays to collect data prior to the start of the intervention period and again 9 months later. This two-day data collection period was chosen for feasibility and logistical purposes, as well as to reduce the burden on ECCs. While blinding was not possible for the ECC, parents and children were not informed about group assignment. Research assistants responsible for collecting data were not told about the ECC's group allocation.

Physical activity

Physical activity was assessed using the Actical accelerometer (B and Z-series, Mini Mitter/Respironics, Oregon, USA) (16), which has been shown to be a valid tool for measuring physical activity in preschoolers.(17) The Actical was worn by children during childcare hours for five consecutive days. Educators were instructed to place the accelerometer around each participating child's waist when they first arrived at the ECC in the morning, and to remove it before the child went home at the end of the day. Once the measurement period of five work days was completed, the accelerometers were collected and sent back to the research team.

Accelerometer data were recorded in 15 second intervals. Time spent in physical activity (PA), moderate-to-vigorous PA (MVPA), light intensity PA (LPA) and sedentary time were measured based on predetermined validated thresholds for preschoolers.(17) Counts of less than 25 per 15 seconds represented sedentary time (which included nap time)(18), counts between 25 and 714 per 15 seconds represented LPA(17,18) while counts of 715 and above defined MVPA.(19) Non-wear time was defined as any period of 60 consecutive minutes where no counts were measured. To provide the most reliable data while maximizing sample size, it was determined that children had to have worn the accelerometer for a minimum of 2 hours on at least 4 days to be included in the analyses.(19) To control for within and between participant wear time variations, accelerometer data were standardized to an 8-hour period,(20) which represents the typical number of hours children in our study attended the ECC. The SAS codes used to clean and manage raw accelerometer data for this study are available as open source.(21)

Fundamental movement skills

The Test of Gross Motor Development (TGMD-II), a valid and reliable tool used to assess fundamental movement skills among children 3–11 years of age, was used to measure children’s fundamental movement skills.(22) Children were videotaped while completing two trials of each locomotor (run, hop, gallop, leap, horizontal jump) and object control skills (catch, kick, overhand and underhand throw), using the standard TGMD-II protocol. Videos were then reviewed by trained assessors who scored each skill and calculated a total raw score for locomotor skills and object control. The TGMD-II scoring protocol uses raw locomotor and object control skill scores to calculate an age adjusted Gross Motor Quotient (GMQ). The GMQ score applies a denominator which assumes that the child has performed each skill. However, some items of the TGMD were eliminated (slide, striking a stationary ball, and stationary dribble) due to the young age of the children. As a result the GMQ could not be accurately calculated for these children and thus, the Percent of Maximum Possible (POMP) scoring system was applied to score children’s fundamental movement skills.(23) The children’s raw object control and locomotor scores were converted to POMP scores to generate the maximum possible score based on the skills, which we included. This also enabled maximizing use of data for cases where children had missing data for a particular skill. For example, if a child had missing data for the run skill (i.e. because they did not want to run at the time of testing), the score for that child would be calculated on a maximum of 40 instead of having a score out of 48 as usual. POMP scores were computed, and age-adjusted as defined by the TGMD-II protocol.

Food intake and food served

Amount of food served by educators or cooks and children’s intake of vegetables and fruit (servings), fiber (g) and sodium (mg) were measured at lunch on 2 consecutive weekdays using weighed plate waste enhanced with digital photography. The intent of capturing at least two consecutive days of usual intake was to minimize the day by day variation in order to obtain a more representative measure while being logistically feasible. The weighed plate waste method has been shown to be a precise measurement of dietary intake(24,25)and has been previously used in studies conducted among school-aged children.(26–28) This method consisted of weighing a standard serving of each food item served to the children. Digital photography was also used to document the weight of the food item sitting on the scale and its type or composition (e.g. mixed dish versus a single-ingredient item). Each child’s plate was weighed and photographed before each serving and after the child was done eating.. In the cases where children served themselves rather than being provided a pre-plated meal, each child’s individual servings of food were weighed and photographed in the same manner. If a second serving was requested by a child, the same procedure was repeated. With digital photography it was possible to estimate the quantity of individual food items first served and then left on each child’s plate. Food intake was calculated as the difference in weight between the total amount of food served and the amount of food leftover.(25) Plate waste data and recipes obtained from the childcare centres were used to assess the amount of vegetables and fruit, fibre and sodium served and consumed by each child, using the ESHA Food Processor nutritional

analysis software, version 10.10.00 (Salem, Oregon). Finally, amount of vegetables and fruit (servings), fibre (g) and sodium (mg) served and children's average intake over the 2 days of data collection were calculated.

Other variables

Children's age and sex were obtained through a questionnaire administered to parents. The number of children in each ECC was based on the total number of preschoolers attending the centre. The ECCs were categorized as having 20 preschoolers or less, between 21 and 26 preschoolers or more than 26 preschoolers. The socioeconomic status of ECC was estimated based on the median income of individuals aged 15 years and older living within the same postal code as the ECC, using data from the Canadian 2011 National Household Survey.(29) Each ECC was placed into one of four socioeconomic status categories according to if their regional median income was less than \$40 000, between \$40 000 and \$59 999, between \$60 000 and \$69 999, or \$70 000 and above. As for geographical location, centres were defined as urban if they were in a census metropolitan area or a census agglomeration with a strong metropolitan influenced zone (MIZ), as defined by the Community Information Database, 2006.(15) Centres were categorised as being in a rural area if they were in an area with moderate, weak or no MIZ.

Opportunities for physical activity and healthy eating were assessed using 55 items (25 items related to nutrition and 30 items related to physical activity) of the Nutrition and Physical Activity Self-Assessment for Child Care (NAP SACC) (30,31) by two trained research assistants who scored the childcare centre's environment over the two days of data collection. Each research assistant recorded their observations independently and compared their observations at the end of the second day. Excellent inter-rater reliability was shown between the research assistants (Cohen's kappa = 0.942, $p < 0.001$). The mean \pm SD for the scores of nutrition and physical activity components of the NAP SACC are reported separately for intervention and control groups at baseline (Table 1). The 55 items were summarized into fewer categories using principle component analysis. Given NAP SACC-derived variables were ordinal, we used the untie method (PRINQUAL procedure in SAS 9.4) to transform the data, which helps retain variance of the original data for finding correlations. The factor loadings are the correlation coefficient of the relationship between categories of the NAP SACC and the underlying factors.(32) For labelling the factors, we considered all questions with factor loadings above or below the cut off of ± 0.4 . Four groupings were identified to represent environmental factors related to physical activity and nutrition in ECC (see Additional file "1").

Analyses

Analyses were pursued according to the intention-to-treat principle.(33) To assess the effect of the intervention, measures of the outcomes of interest were fitted in mixed-effect models using time of measurement (baseline or endpoint), group (intervention or control), and an interaction between time and group as fixed effects (Models 1). Additional models (Models 2) were built on these initial models to account for potentially confounding variables identified using Directed Acyclic Graphs (DAG) for each outcome.(34) These graphs are frequently used in epidemiological studies as they help illustrate the potential sources of bias and help identify confounding variables which should be controlled in the statistical analyses.(34) DAGs help researchers visually represent their hypotheses and the relationships between the variables of interest. Specifically, 2 Models were adjusted for age, sex, size of ECC, neighbourhood income, language, province, rurality and a physical activity environment score for physical activity and gross motor skills outcomes, or a nutrition environmental score for food intake and food served outcomes. To account for clustering related to repeated measures and due to the sampling of participants in ECC, variables representing participants and ECC were included as random effects in all models. In a secondary set of analyses, we tested additional interaction terms to assess whether the intervention would have different effects across different strata (i.e., sex, province—Saskatchewan, New Brunswick,

language of centre—English, French, or location of centre—urban, rural). Analyses were conducted with the MIXED procedure in SAS, version 9.4.

Results

Sixty-one childcare centres were randomly selected and allocated to the intervention or control group (Figure 1). In total, 897 children (4.1 years old \pm 0.8) were recruited in September of 2013, 2014 and 2015. Of these children, 464 attended an ECC randomly allocated to the intervention group and 433 attended an ECC allocated to the control group. All ECCs allocated to the intervention group received the HSDS intervention, except for one centre (n = 9 participating children) which decided to drop out of the study due to change of management. Losses to follow-up were similar in both groups across all primary outcomes, except for physical activity where the percentage of follow-up loss was greater in the control group (25%) than in the intervention group (16%).

Figure 1: CONSORT flow diagram of participants through each stage of the intervention

Following recruitment of one of the childcare centres in the usual practice arm, it was found that it had the same director and shared staff with a nearby ECC which had been recruited in the intervention arm. Given the risk of contamination quasi certain it was decided to amalgamate the 2 centres as one intervention centre.

Children in both groups were similar on all baseline characteristics as demonstrated in Table 1.

Insert Table 1 here

The unadjusted models showed a positive effect of the intervention on locomotor skills (Table 2). This effect remained significant after controlling for potentially confounding variables such that children in the intervention group had, on average, a 3.33 greater point increase in their locomotor motor skills scores than children in the control group. The intervention was not associated with statistically significant differences in effects on object control or physical activity variables. Overall, children in both the intervention and control group increased their time spent in total PA by approximately 10 minutes over an 8-hour period, on average, between baseline and endpoint. Specifically, this represents an average increase of 7 minutes of MVPA and 3 minutes of LPA per childcare day. However, no significant differences in total PA, MVPA, LPA or sedentary activity were found between the intervention and control group between baseline and endpoint.

Insert Table 2 here

Whereas the intervention was not associated with differences in children's food intake, the unadjusted models suggested a statistically significant difference in food served. Specifically, a small reduction in amount of fiber served was noted in the unadjusted model, but this difference was not sustained after controlling for confounders. Finally, the adjusted model suggested a marginal increase in portions of fruits and vegetables served in the intervention group compared to control group.

None of the interaction analyses suggested any difference in the effect of the intervention across sexes, provinces, language groups, or location of centres (data not shown).

Discussion

The effectiveness of the HSDS intervention in increasing physical activity levels and healthy eating as well as improving fundamental movement skills in preschoolers attending ECC was only partially demonstrated. The intervention was associated with a statistically significant improvement in locomotor skills. This finding is not surprising as a process evaluation of the HSDS demonstrated that most ECC who received the HSDS intervention reported using the physical literacy HOP resource on a weekly basis and that 74% of those activities emphasized locomotor skills over object control skills.(35) Our findings are consistent with previous studies which have found that physical activity interventions targeting gross motor skills, result in an increase in locomotor skills but not necessarily object control skills.(36,37) Interventions designed to increase gross motor skills in children often target locomotor skills such as jumping and running rather than object control skills. Wang et al. discussed this phenomenon and suggested that more targeted approaches should be employed when designing interventions aimed at supporting children in developing and improving both locomotor and object control skills.(38)

The development of fundamental movement skills (locomotor, object control) in childhood are essential building blocks for participation in physical activity across the lifespan.(36,39) Teaching children these essential movement skills may lead to a greater willingness to participate in physical activity of all types during early childhood and beyond.(40) Nevertheless, physical activity-level related outcomes were not associated with between group differences in this study. However, physical activity levels did improve in both groups. This positive change could potentially be indicative of a study effect (“Hawthorne effect”) in that children who wore accelerometers, regardless of intervention/control groups, were more active compared to when they were not wearing the devices. This observation is confirmed in 30% of the studies included in Waters et al systematic review of control groups’ improvements in physical activity intervention trials and one of the associated factors was repeated measures.(41) Other possible explanations are the potential for seasonal effects as physical activity levels of preschoolers tend to increase during Spring.(42,43)

In terms of food intake, most findings, except for fiber, showed improvement in a direction favouring the intervention. However, after controlling for confounding factors, results did not reach statistical significance. According to a systematic review by Golley & Bell, (previous interventions which provided nutrition training for ECC staff have found positive effects on children’s dietary intake or on centre food provision.(44) However, few studies showed a positive effect when these outcomes were assessed using objective methods (45,46), as was done in this study. Overall, children’s food intake increased slightly in both groups. This could be attributed to a maturation effect, as children’s daily energy requirements increase by approximately 100 kcals each year between the age of 2 and 5.(47) Furthermore, no significant between-group differences in fiber, vegetables and fruit servings and sodium were found. The ECCs’ environment in which food is prepared and served, is influenced by provincial standards. Yet, the implementation of these standards in ECCs is limited by the lack of enforcement,(48) and their interpretation may vary as a function of the presence of a dedicated cook, access to fresh and affordable healthy food, and other contextual factors such as child care leadership and priorities, which are difficult to standardize, thus possibly explaining the modest direct impact on children’s diet.

As a population health intervention, HSDS’s main target was the change in the childcare centre’s environment with the hypothesis that in comparison to the usual practice group, exposure to the HSDS intervention would result in increased opportunities for physical activity and healthy eating in those centres which in turn would increase healthy behaviours in children. Impact on children hinged on the full deployment of the intervention as intended. According to our pilot study(49) and the HSDS process evaluation intervention,(35) educators were very responsive to HSDS, felt more confident in their own skills after the intervention training as well as were willing to organize the childcare centres environment and role model in order to facilitate behaviour changes in children. Reported changes were usually simple to implement, low cost and at the centre level. Educators’ modelling behaviours, skill development and increased self-efficacy are recognized in the literature as key strategies to effect change(49,50) and our previously reported findings certainly concur with these. While implementation fidelity of the intervention was high, process evaluation results also showed that more ECC used the physical activity resource than the healthy eating resource. This could partially explain

the dismal findings with regards to food intake and food served. Further, ECC generally reported lack of time, lack of support from childcare staff and low parental engagement as key challenges to full implementation and sustainability of HSDS, which could also explain the lack of significant results of this study. In Nixon's systematic review of interventions in childcare settings targeting healthy behaviours and obesity prevention(10), 6 out of 12 studies documenting a significant improvement in outcomes were associated with medium to high parental involvement. This level of engagement was missing in the intervention reported here, therefore future interventions should more systematically target the whole family in addition to the ECC. Another variable to consider is the length of deployment in centres; maybe the intervention was too short or not sufficiently intensive.

The robust design of the study using a control group and pre and post objectives measures is a core strength of the HSDS study. Although applying the randomisation scheme, not all centres started at the same point at baseline and this situation may have overshadowed the true impact of HSDS, which was a population health intervention operating in real world settings, meaning that children and ECC in the usual practice group knew the purpose of the study in order to consent and were aware they would only receive the intervention in a delayed fashion in the future. The most obvious and visible measurements were related to the wearing of accelerometers, which may explain the increase in physical activity in both groups.

The lack of significant results could also be attributed to the following factors. It is possible that our priori statistical power estimates following pilot work were based on an optimistic level of 10% difference, which was not reached. Estimates may not have taken into consideration adequate sample size for achieving meaningful sub-groups analyses. Although the number of enrolled children surpassed our initial target number, the lower than anticipated number of participants who provided valid data at both time points may have prevented us from demonstrating significant effects. When considering the numbers of children who contributed to the outcome measures, especially for physical activity, there is a notable loss of participants from baseline to endpoint. It is also possible that those children who wore the accelerometers vs those who dropped out were systematically more active. Children may have also been likely to remove their accelerometer or refuse to participate in the gross motor activities. Valid pre- and post-food intake data was easier to collect and control, as lunchtime was a structured and routine activity in the ECC, and therefore expected by children. Another limitation may be due to the length of the intervention, which was shorter than in studies reporting significant behaviours changes.(51–53)

Conclusions

In summary, HSDS, a population health intervention in the ECC settings combines increased opportunities for physical activity and healthy eating, which constitute two core components for effective childhood obesity prevention according to Bleich et al recent systematic review. (54) Although beneficial effects of HSDS were modest, it is noteworthy that most outcome indicators progressed in a direction favouring HSDS intervention compared to the usual practice group. Further development and testing of this intervention should be considered.

Abbreviations

BMI: Body mass index; DAG: Directed Acyclic Graphs; ECC: Early childhood centres; GMQ: Gross Motor Quotient; HSDS: Healthy Start-Départ Santé; LPA: light intensity physical activity; MVPA: moderate-to-vigorous physical activity; NAP SACC: Nutrition and Physical Activity Self-Assessment for Child Care; PA: Physical activity; POMP: Percent of Maximum Possible; SD: Standard deviation; TGMD-II: Test of Gross Motor Development II.

Declarations

Acknowledgements

Authors are grateful for the important contribution of Gabrielle Lepage-Lavoie, project manager, and Roger Gautier, director of the Réseau Santé en Français de la Saskatchewan, for leading the implementation of Healthy Start-Départ Santé. We also thank directors of ECC, educators, parents, and children for their valued collaboration.

Ethics approval and consent to participate

The study received ethics approval from Health Canada, the University of Saskatchewan, and the Université de Sherbrooke. All ECC and parents of participating children provided written informed consent.

Consent for publication

Not applicable.

Availability of data and materials

The datasets used and/or analysed during the current study are available from the corresponding author on reasonable request.

Competing interests

The authors declare that they have no competing interests.

Funding

This study was financially supported by a grant from the Public Health Agency of Canada (# 6282-15-2010/3381056-RSFS), a research grant from the Consortium national de formation en santé (# 2014-CFMF-01), and a grant from the Heart and Stroke Foundation of Canada (# 2015-PLNI). AFC was funded through a postdoctoral fellowship from the Saskatchewan Health Research Foundation and SW was funded through a Canadian Institutes of Health Research Charles Best Canada Graduate Scholarships Doctoral Award and a Gérard-Eugène-Plante Doctoral Scholarship from the Faculty of Medicine and Health Sciences at the Université de Sherbrooke.

Authors' contributions

Development of the intervention was led by AL, LH, and NM and development of the evaluation protocol was led by AL, MB, LH, HV, and NM. AL acts as the study's principal investigator. AL and MB each oversaw the study in their respective province. Physical activity components were led by MB and NM, nutrition components were led by HV, SW, and RES, and fundamental movement skills components were led by LH and AFC. AL, SW and MB wrote the first draft of this manuscript. All of the authors reviewed the manuscript critically for important intellectual content and approved the final version submitted for publication.

References

1. Guyer B, Ma S, Grason H, Frick KD, Perry DF, Sharkey A, et al. Early childhood health promotion and its life course health consequences. *Acad Pediatr*. 2009; doi: 10.1016/j.acap.2008.12.007

2. Garriguet D, Carson V, Colley RC, Janssen I, Timmons BW, Tremblay MS. Physical activity and sedentary behaviour of Canadian children aged 3 to 5. *Health reports*. 2016; 27(9):14–23.
3. Roberts KC, Shields M, de Groh M, Aziz A, Gilbert J-A. Overweight and obesity in children and adolescents: results from the 2009 to 2011 Canadian Health Measures Survey. *Health reports*. 2012;23(3):37–41.
4. Larson N, Ward DS, Neelon SB, Story M. What role can child-care settings play in obesity prevention? A review of the evidence and call for research efforts. *J Am Diet Assoc*. 2011; doi:10.1016/j.jada.2011.06.007
5. Story M, Kaphingst KM, French S. The role of child care settings in obesity prevention. *Futur Child*. 2006;16(1):143–168.
6. Kaphingst KM, Story M. Child care as an untapped setting for obesity prevention: state child care licensing regulations related to nutrition, physical activity, and media use for preschool-aged children in the United States. *Prev Chronic Dis*. 2009;6(1):A11.
7. Mikkelsen M, Husby S, Skov L, Perez-Cueto F. A systematic review of types of healthy eating interventions in preschools. *Nutr J*. 2014; doi: 10.1186/1475–2891–13–56.
8. Temple M, Robinson J. A systematic review of interventions to promote physical activity in the preschool setting. *J Spec Pediatr Nurs*. 2014; doi:10.1111/jspn.12081.
9. Hesketh KD, Campbell KJ. Interventions to prevent obesity in 0–5 year olds: An updated systematic review of the literature. *Obesity*. 2010; doi: 10.1038/oby.2009.429.
10. Nixon CA, Moore HJ, Douthwaite W, Gibson EL, Vogele C, Kreichauf S, et al. Identifying effective behavioural models and behaviour change strategies underpinning preschool- and school-based obesity prevention interventions aimed at 4–6-year-olds: A systematic review. *Obes Rev*. 2012; doi:10.1111/j.1467–789X.2011.00962.x.
11. Public Health Agency of Canada, Canadian Institute for Health Information. Obesity in Canada. 2011 <https://www.canada.ca/content/dam/phac-aspc/migration/phac-aspc/hp-ps/hl-mvs/oic-oac/assets/pdf/oic-oac-eng.pdf>. Accessed 12 Feb 2015.
12. Evans R, Barer M, Marmor T. Why are some people healthy and others not: the determinants of health of populations. Hawthorne: Aldine De Gruyter; 1994.
13. Government of Canada. Implementing the Population Health Approach. 2013. <https://www.canada.ca/en/public-health/services/health-promotion/population-health/implementing-population-health-approach.html>. Accessed 15 Aug 2013.
14. Bélanger M, Humbert L, Vatanparast H, Ward S, Muhajarine N, Chow AF, et al. A multilevel intervention to increase physical activity and improve healthy eating and physical literacy among young children (ages 3–5) attending early childcare centres: The Healthy Start-Départ Santé cluster randomised controlled trial study protocol. *BMC Public Health*. 2016; 10.1186/s12889–016–2973–5.
15. Community Information Database. <http://www.cid-bdc.ca/useful-definitions>. Accessed Aug 5 2013.
16. Pate RR, O’Neill JR, Mitchell J. Measurement of physical activity in preschool children. *Med Sci Sport Exerc*. 2010; doi: 10.1249/MSS.0b013e3181cea116.
17. Pfeiffer KA, McIver KL, Dowda M, Almeida MJCA, Pate RR. Validation and calibration of the Actical accelerometer in preschool children. *Med Sci Sports Exerc*. 2006; 38(1):152–157.
18. Wong SL, Colley R, Connor Gorber S, Tremblay M. Actical accelerometer sedentary activity thresholds for adults. *J Phys Act Health*. 2011;8(4):587–591.
19. Ward S, Bélanger M, Donovan D, Boudreau J, Vatanparast H, Muhajarine N, et al. “Monkey see, monkey do”: Peers’ behaviors predict preschoolers’ physical activity and dietary intake in childcare centers. *Prev Med*. 2017; doi: 10.1016/j.ypped.2017.01.001.

20. Katapally TR, Muhajarine N. Towards uniform accelerometry analysis: a standardization methodology to minimize measurement bias due to systematic accelerometer wear-time variation. *J Sports Sci Med*. 2014;13(2):379–386.
21. Boudreau J, Bélanger M. SAS Code for Accelerometer Data Cleaning and Management Version 1.3. 2015. http://mathieubelanger.recherche.usherbrooke.ca/Files/Other/UserManual_BoudreauBelanger_V1-3.pdf. Accessed July 6 2015.
22. Ulrich D. *Test of Gross Motor Development*, 2nd ed. Austin: Pro-Ed; 2000.
23. Cohen P, Cohen J, Aiken LS, West SG. The problem of units and the circumstance for POMP. *Multivariate Behav Res*. 1999; 34(3):315–346.
24. Jacko C, Dellava J, Enslie K, Hoffman D. Use of the plate-waste method to measure food intake in children. *J Ext*. 2007; 45(6):6RIB7.
25. Wolper C, Heshka S, Heymsfield S. Measuring food intake: An overview. In: Allison DB. *Handbook of assessment measures for eating behaviors and weight-related problems*. Thousand Oaks: Sage Publishing; 1995.
26. Blakeway SF, Knickrehm ME. Nutrition education in the Little Rock school lunch program. *J Am Diet Assoc*. 1978;72(4):389–391.
27. Lee HS, Lee KE, Shanklin CW. Elementary students' food consumption at lunch does not meet recommended dietary allowance for energy, iron, and vitamin a. *J Am Diet Assoc*. 2001; doi: 10.1016/S0002-8223(01)00261-9.
28. Whatley JE, Donnelly JE, Jacobsen DJ, Hill JO, Carlson MK. Energy and macronutrient consumption of elementary school children served modified lower fat and sodium lunches or standard higher fat and sodium lunches. *J Am Coll Nutr*. 1996; 15(6):602–607.
29. University of Toronto. *Microdata Analysis and Subsetting with SDA*. 2015. <http://sda.chass.utoronto.ca/sdaweb/index.html>. Accessed Aug 22 2015.
30. Ammerman AS, Ward DS, Benjamin SE, Ball SC, Sommers JK, Molloy M, et al. An intervention to promote healthy weight: Nutrition and Physical Activity Self-Assessment for Child Care (NAP SACC) theory and design. *Prev Chronic Dis*. 2007;4(3):A67.
31. Neelon SB, Ammerman A. Nutrition and Physical Activity Self-assessment for Child Care (NAP SACC): Results from a pilot intervention. *J Nutr Educ Behav*. 2007; 39:142–149.
32. Kruskal JB. Multidimensional scaling by optimizing goodness of fit to a nonmetric hypothesis. *Psychometrika*. 1964; doi: 10.1007/BF02289565.
33. Gupta S. Intention-to-treat concept: A review. *Perspect Clin Res*. 2011; doi: 10.4103/2229-3485.83221.
34. Sauer B, VanderWeele T. Supplement 2: Use of Directed Acyclic Graphs. In: Velentgas P, Dreyer N, Nourjah P, editors. *Developing a Protocol for Observational Comparative Effectiveness Research: A User's Guide*. Rockville: Agency for Healthcare Research and Quality; 2013.
35. Ward S, Chow AF, Humbert ML, Bélanger M, Muhajarine N, Vatanparast H, et al. Promoting physical activity, healthy eating and gross motor skills development among preschoolers attending childcare centers: Process evaluation of the Healthy Start-Départ Santé intervention using the RE-AIM framework. *Eval Program Plann*. 2018; doi:10.1016/j.evalprogplan.2018.02.005.
36. Adamo KB, Wilson S, Harvey ALJ, Grattan KP, Naylor P-J, Temple VA, et al. Does intervening in childcare settings impact fundamental movement skill development? *Med Sci Sport Exerc*. 2016; doi: 10.1249/MSS.0000000000000838.
37. Wasenius NS, Grattan KP, Harvey ALJ, Naylor P-J, Goldfield GS, Adamo KB. The effect of a physical activity intervention on preschoolers' fundamental motor skills—A cluster RCT. *J Sci Med Sport*. 2018; doi: 10.1016/j.jsams.2017.11.004.

38. Wang JH-T. A study on gross motor skills of preschool children. *J Res Child Educ.* 2004; doi: 10.1080/02568540409595052.
39. Gallahue D., Osmun JC. *Understanding motor development: Infants, children, adolescents, adults.* Boston: McGraw Hill; 2006.
40. Lubans DR, Morgan PJ, Cliff DP, Barnett LM, Okely AD. Fundamental movement skills in children and adolescents. *Sport Med.* 2010; doi: 10.2165/11536850-000000000-00000.
41. Waters L, Reeves M, Fjeldsoe B, Eakin E. Control group improvements in physical activity intervention trials and possible explanatory factors: a systematic review. *J Phys Act Health.* 2012;9(6):884–895.
42. Carson V, Spence JC. Seasonal variation in physical activity among children and adolescents: A review. *Pediatr Exerc Sci.* 2010; 22(1):81–92.
43. Barbosa S, de Oliveira A. Physical activity of preschool children: A review. *J Physiother Phys Rehabil.* 2016; doi:10.4172/2573-0312.1000111.
44. Golley RK, Bell L. Interventions for improving young children’s dietary intake through early childhood settings: A systematic review. *Int J Child Heal Nutr.* 2015; doi:10.6000/1929-4247.2015.04.01.2.
45. Williams C, Bollella M, Strobino B, Spark A, Nicklas T, Tolosi L, et al. “Healthy-Start”: outcome of an intervention to promote a heart healthy diet in preschool children. *J Am Coll Nutr.* 2002; doi:10.1080/07315724.2002.10719195.
46. Witt K, Dunn C. Increasing fruit and vegetable consumption among preschoolers: evaluation of color me healthy. *J Nutr Educ Behav.* 2012; doi:10.1016/j.jneb.2011.01.002.
47. Torun B. Energy requirements of children and adolescents. *Public Health Nutr.* 2005; doi: 10.1079/PHN2005791.
48. Ward S, Bélanger M, Donovan D, Vatanparast H, Engler-Stringer R, Leis A, et al. Lunch is ready... But not healthy: An analysis of lunches served in childcare centres in two Canadian provinces. *Can J Public Heal.* 2017; doi: 10.17269/cjph.108.5688.
49. Chow AF, Leis A, Humbert L, Muhajarine N, Engler-Stringer R. Healthy Start—Départ Santé: A pilot study of a multilevel intervention to increase physical activity, fundamental movement skills and healthy eating in rural childcare centres. *Can J Public Heal.* 2016; doi: 10.17269/cjph.107.5279.
50. Ward S, Blanger M, Donovan D, Vatanparast H, Muhajarine N, Engler-Stringer R, et al. Association between childcare educators’ practices and preschoolers’ physical activity and dietary intake: A cross-sectional analysis. *BMJ Open.* 2017; doi: 10.1136/bmjopen-2016-013657.
51. Nemet D, Geva D, Pantanowitz M, Igbaria N, Meckel Y, Eliakim A. Long term effects of a health promotion intervention in low socioeconomic Arab- Israeli kindergartens. *BMC Pediatr.* 2013; doi: 10.1186/1471-2431-13-45.
52. Hoffman JA, Thompson DR, Franko DL, Power TJ, Leff SS, Stallings VA. Decaying behavioral effects in a randomized, multi-year fruit and vegetable intake intervention. *Prev Med.* 2011; doi: 10.1016/j.ypmed.2011.02.013.
53. Bayer O, von Kries R, Strauss A, Mitschek C, Toschke AM, Hose A, et al. Short- and mid-term effects of a setting based prevention program to reduce obesity risk factors in children: A cluster-randomized trial. *Clin Nutr.* 2009; doi: 10.1016/j.clnu.2009.01.001.
54. Bleich SN, Vercammen KA, Zatz LY, Frelier JM, Ebbeling CB, Peeters A. Interventions to prevent global childhood overweight and obesity: a systematic review. *Lancet Diabetes Endocrinol* 2018; 6: 332–46. Published Online October 20, 2017 <http://dx.doi.org/10.1016/>

Tables

Table 1. Descriptive characteristics of the study sample

	Control	Intervention
CHILDREN LEVEL VARIABLES	(n = 433)	(n = 462)
Age (years)	4.1 ± 0.75	4.1 ± 0.77
Sex (boys)	235 (54%)	237 (51%)
Height (cm)	102.8 ± 6.6	103.4 ± 6.6
Weight (kg)	17.1 ± 3.0	17.4 ± 3.1
Waist circumference (cm)	53.6 ± 4.6	53.6 ± 4.5
Age-adjusted BMI (kg/m ²)	20.4 ± 3.7	20.3 ± 3.8
Province		
Saskatchewan	230 (53%)	272 (58%)
New Brunswick	203 (47%)	192 (42%)
Language of ECC		
English	265 (61%)	310 (67%)
French	168 (39%)	154 (33%)
Location of ECC		
Rural	152 (35%)	197 (42%)
Urban	281 (65%)	267 (58%)
Median household income (before taxes)	54 773 ± 10 790	54 769 ± 11 067
CHILDCARE CENTRE LEVEL VARIABLES	(n = 30)	(n = 31)
Childcare centre size (number of children)	27 ± 12	28 ± 15
Nutrition environment score (scale from 0 to 75)	38.31 ± 7.88	39.39 ± 7.23
PA environment score (scale from 0 to 90)	43.5 ± 10.27	42.0 ± 10.03

Table 2. Difference in PA, fundamental movement skills, food intake/served between the intervention and control groups ^a

	Intervention group		Control Group		Models 1 ^b		Models 2 ^c	
	Mean (standard deviation)	Mean (standard deviation)	Mean (standard deviation)	Mean (standard deviation)	Beta for intervention-control group difference (standard error)	p-value	Beta for intervention-control group difference (standard error)	p-value
	Pre	Post	Pre	Post				
Physical activity								
Total physical activity (minutes/day)	181.93 (47.77)	191.41 (44.35)	171.60 (47.77)	181.59 (46.59)	6.42 (6.18)	0.3	5.98 (6.28)	0.3
TVPA (minutes/day)	31.00 (18.86)	36.58 (18.66)	26.48 (16.81)	34.98 (18.13)	2.68 (2.49)	0.3	2.01 (2.54)	0.4
PA (minutes/day)	150.93 (39.15)	154.83 (33.95)	145.12 (37.49)	146.60 (34.81)	3.81 (4.8)	0.4	4.11 (4.86)	0.4
Sedentary time (minutes/day)	298.07 (47.77)	288.59 (44.35)	308.40 (47.77)	298.41 (46.59)	-6.42 (6.18)	0.3	-5.98 (6.28)	0.3
Fundamental movement skills								
Gross motor score)	40.99 (16.11)	44.29 (15.61)	36.53 (15.58)	42.86 (15.66)	3.84 (2.09)	0.001	3.33 (1.28)	0.009
Object control score)	45.42 (16.48)	43.69 (14.80)	42.49 (14.65)	44.11 (14.83)	3.38 (2.63)	0.201	1.61 (2.55)	0.5
Food Intake								
Fiber (g)	2.42 (1.42)	2.67 (1.74)	2.40 (1.44)	2.45 (1.37)	-0.09 (0.04)	0.05	-0.068 (0.047)	0.1
Vegetables and fruit (servings)	0.63 (0.52)	0.76 (0.69)	0.66 (0.46)	0.81 (0.57)	0.01 (0.03)	0.7	0.02 (0.03)	0.6
Calodium (mg)	474.94 (307.73)	485.79 (328.62)	532.05 (421.25)	581.52 (386.92)	-0.05 (0.7)	0.9	-0.12 (0.76)	0.9
Food Served								
Fiber (g)	2.84 (1.52)	2.99 (1.76)	2.68 (1.34)	2.73 (1.43)	-0.1 (0.04)	0.02	-0.07 (0.045)	0.1
Vegetables and fruit (servings)	0.76 (0.56)	0.85 (0.70)	0.76 (0.46)	0.92 (0.57)	0.04 (0.03)	0.2	0.06 (0.03)	0.05
Calodium (mg)	544.68 (336.68)	545.39 (348.24)	586.64 (430.55)	581.52 (386.92)	0.29 (0.7)	0.7	0.26 (0.73)	0.7

^a Between group differences are based on mixed-effect linear regression models which include variables representing participants and childcare centres as random effects to account for repeated measures and for clustering of participants in childcare centres.

^b Represents the interaction term between time and group.

^c Represents the interaction term between time and group with adjustments for age, sex, size of childcare centre, neighbourhood income, language, province, rurality and a physical activity environment score for physical activity and gross motor skills outcomes or a nutrition environmental score for food intake and food served outcomes.

Figures

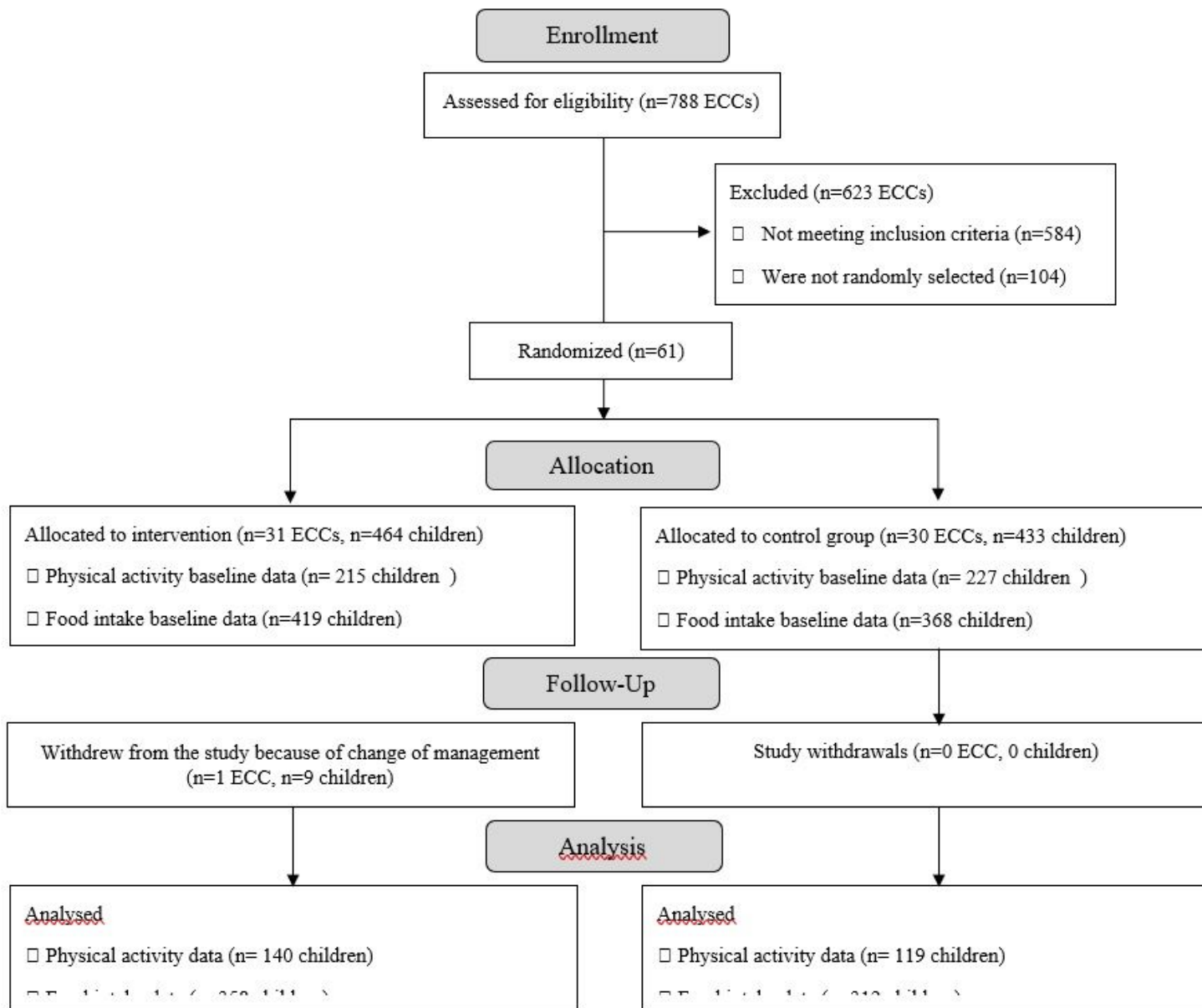


Figure 1

CONSORT flow diagram of participants through each stage of the intervention

Supplementary Files

This is a list of supplementary files associated with this preprint. Click to download.

- [Additionalfile1.docx](#)