

# Assessing the relationship between public spending and economic growth through an endogenous growth model

Thierry Y. Gnangoin, Ph.D. (✉ [thierrybienvendu2010@yahoo.fr](mailto:thierrybienvendu2010@yahoo.fr))

Dongbei University of Finance and Economics <https://orcid.org/0000-0001-8132-635X>

Liangsheng Du

Dongbei University of Finance and Economics

---

## Research Article

**Keywords:** Public Spending, Economic Growth, Cross-dependence, Low-Income countries, Middle-Income Countries, High-Income countries.

**Posted Date:** March 29th, 2021

**DOI:** <https://doi.org/10.21203/rs.3.rs-328655/v1>

**License:**  This work is licensed under a Creative Commons Attribution 4.0 International License.

[Read Full License](#)

---

1 **Assessing the relationship between public spending and economic growth through an endogenous growth**  
2 **model**

3

4

5

6 Thierry Y. Gnangoin, Ph.D<sup>1</sup>.

7 School of Economics

8 Tel: 0086 130 1949 8971

9 thierrybienvenu2010@yahoo.fr

10 Dongbei University of Finance and Economics, Dalian (116025), China

11 Felix Houphouet-Boigny University of Abidjan, Cote d'Ivoire

12 Liangsheng Du

13 School of Economics

14 Dongbei University of Finance and Economics, Dalian (116025), China

15

16

17

18

19

20

21

22

23

---

<sup>1</sup> Corresponding author

24 **Declarations**

25 **Funding**

26 This research receives no external funding

27 **Conflicts of interest/Competing interests**

28 The authors declare that they have no competing interests

29 **Availability of data and material**

30 The datasets generated and/or analyzed during the current study are from the 2019 World Development Indicators,  
31 the 2019 World Governance Indicators, and the 2019 International Monetary Fund Government Finance Statistics.

32 **Code availability**

33 The software used in this study is STATA14

34 **Authors' contributions**

35 Conceptualization: TYG; Methodology: TYG; Formal analysis and investigation: TYG; Writing - original draft  
36 preparation: TYG; Writing - review and editing: TYG; Project administration: LD; Software: TYB; Supervision: LD.

37 **Ethics approval**

38 Not applicable

39 **Consent to participate**

40 Not applicable

41 **Consent for publication**

42 Not applicable

43

44

45

46

47

48

49 **Abstract**

50 Public spending is a part of the fiscal policy and one of the government's main tools to implement its economic  
51 policy. With government spending still on the rise in many economies, and the different economic growth levels,  
52 especially in low and middle economies, the debate on whether government spending has a positive, negative or  
53 neutral impact on economic growth is still raging nowadays. So, in this analysis, we attempt to contribute to this  
54 issue by shedding light on this relationship in the case of low, middle, and high-income countries. In so doing, we  
55 extend the previous work of Devarajan et al. (1996) and Chu et al. (2020) by considering the nonlinear relationship  
56 between disaggregated public spending and economic growth. We also pay attention to the role of public spending  
57 on environmental protection, political stability, control of corruption, and the 2008 financial crisis, on economic  
58 growth. To reach our objectives, we examine 13 high-income countries and 22 low to middle-income countries for  
59 the period 1993-2018 through four estimations techniques: the fixed-effects approach; the pooled standard errors  
60 Driscoll-Kraay (1998), the panel feasible generalized least squares, and the difference GMM with orthogonal  
61 deviations.

62

63

64

65

66

67

68

69

70

71

72

73

74 **Keywords:** Public Spending, Economic Growth, Cross-dependence, Low-Income countries, Middle-Income  
75 Countries, High-Income countries

76 **JEL code:** H5, C2, O5

77        **1. Introduction**

78        Public spending can be defined as consumption, investment, and transfer payments that enable the government to  
79        produce goods and services to realize its policy. Taxes and public borrowing mainly finance this spending. Taxes  
80        can be direct and indirect, while borrowings imply selling government bonds. The combination of public spending  
81        and taxation constitutes government fiscal policy. This policy is called expansionary when there is an increase in  
82        spending and/or a decrease in taxation, and contractionary in the case of a reduction of government spending and/or  
83        an increase in taxation. This policy is used by the government as an instrument to influence economic growth, as  
84        suggested by Keynes (1936) in his theory (so-called Keynesian theory).

85        Besides, according to the World Bank's Development report 2017, public spending and taxes are policy instruments  
86        used to manage development outcomes such as security, growth, and equity. So, public spending affects economic  
87        growth, and this influence can be positive, negative, or neutral, as noted by certain authors like Ram (1986), Landau  
88        (1986), Scully (1989), and Diamond (1989). This effect can also be bidirectional as economic growth can lead to  
89        changes in either aggregate public spending (Wagner's Law) or some of its components (through changes in the  
90        demand for certain public services).

91        As all economies' objective is its development through a positive and constant economic growth, a variety of  
92        empirical studies, based on time-series or cross-country data, have been aimed at estimating the specific contribution  
93        of public spending to economic growth. The major obstacles encountered in these studies include the difficulties  
94        involved in valuing public sector outputs, estimating the impact of public expenditure financing separately, and  
95        measuring the effects of other factors on economic growth. Some studies of the relationship between aggregated  
96        public spending and economic growth are sensitive to small changes in the model specification (Levine and Renelt,  
97        1992). Certain relates total public spending to economic growth while others focus on the relationship between  
98        specific spending components, such as health, education, defense, and economic growth.

99        In this analysis, we attempt to answer to the question about the types of public spending that significantly impact  
100        economic growth. We focus on low, middle, and high-income countries because; we assume that a given starting  
101        level of income can influence economic variables. In so doing, we contribute to the literature about the link between  
102        public spending and economic growth by extending the work of Devarajan et al. (1996) and Chu et al. (2020).

103        In effect, after examining the impact of aggregated public spending on economic growth, we consider, on contrary  
104        of these authors the nonlinear relationship between disaggregated public spending and economic growth in low,  
105        middle and high-income countries. We also pay attention to the role of public spending on environmental protection,  
106        political stability, control of corruption, and the 2008 world's financial crisis in this relationship.

107        This work is organized as follows: the first part is about the study introduction. Section two concerns the literature  
108        review, and is about the different variables used in this analysis — the next section details materials and methods  
109        used in this work. Section four shows the results and discussions for the various analysis methods used, and section  
110        five is for the conclusion and results policy implications.

## 111 2. Literature Review

112 Many theories and empirical analysis have been developed across the years to understand the nature, if any, of the  
113 relationship between public spending and economic growth. Considering the importance of this issue, we attempt in  
114 this section to shed light on some main contributions to this question.

115 Keynes's (1936) considered that Government action is important in economic activity. For him, the new spending  
116 coming from the public investment will contribute to creating activity, hence reducing unemployment and restore  
117 corporate profit margins. He rejected the criticism concerning the crowding-out effect of the public investment and  
118 considered fiscal policy a crucial determinant of economic activity. However, the question of the components of  
119 public expenditure remains less explicit since it only mentions the role of loan funds expenditure (which enrich the  
120 community) in his analysis. According to Kalecki (1943), Public authorities can, directly and indirectly, increase the  
121 employment level through the increase of spending. In effect, if Government undertakes capital expenditure (schools,  
122 hospitals, roads) or subsidizes household consumption (allowances, indirect taxes, necessities), and if the public  
123 spending is financed by borrowing only, then the effective demand for goods and services could rise to the point of  
124 achieving the objective of full employment. Through the increase of production and employment, public spending  
125 benefits workers and entrepreneurs as it does not lead to additional taxes.

126 Samuelson (1958) deals with the difficulties linked to the theory of public spending and those related to political  
127 decision-making. Its analysis is made through various hypotheses: Government must focus on the production of  
128 collective goods and maximize the function of social well-being. For him, the Government has multiple functions.  
129 Firstly, it must increase economic activity efficiency by promoting competition and providing public goods.  
130 Secondly, it encourages equity through redistribution using the mechanism of public spending and taxes. Thirdly, it  
131 contributes to macroeconomic stability and economic growth through fiscal policy and monetary regulation  
132 (reducing unemployment and inflation). Governments must constrain citizens to pay taxes, respect regulations and  
133 consume public goods and services to reach this objective. That is only possible in a situation of Government  
134 intervention. This point of view allows for the study of the effect of the composition of public spending on growth.  
135 This study, developed during the 1980s by some authors like Romer (1986) and Barro (1990) deals with the  
136 importance of public spending by considering it as input. For these authors (endogenous growth economists), if a  
137 part of public expenditure can be qualified as unproductive, several public spending functions can directly or  
138 indirectly contribute to productivity and the creation of externalities. These functions include infrastructure,  
139 education, health, property rights.

140 Romer (1986) studied the origin of growth considering the impact of public investment, particularly public  
141 investment in capital. Barro (1990) contributed to his work by assuming the role of public infrastructures such as  
142 roads, bridges, electricity, and security as growth determinants. In his work, Barro (1990) considers that the factors  
143 provided by Government, sources of endogenous growth are in two forms: in the one hand, public expenditure is  
144 directly integrated into the household utility function, and in this case, there is an important possibility of  
145 substitution between public and private spending; in the other hand, public expenditure is introduced into the

146 producer production function, in this circumstances it is complementary to private spending by increasing the  
147 marginal profitability of capital.

148 The first type of expenditure (public consumption in empirical analysis) reduces the growth rate and the savings rate  
149 because it has no effect on private sector productivity and increases the taxation rate. The second type of expenditure  
150 (ratio of public investment to GDP) has two effects. Firstly, an increase in the tax rate, which reduces the growth  
151 rate. Secondly, an increase in public spending contributes to capital productivity, hence improve growth. The first  
152 effect dominates when the Public role is large, while it is the second when the Public action is small.

153 King et Rebelo (1990) estimated that public policies could significantly impact the average economic growth in an  
154 economy. Public policies encourage physical and human capital accumulation. This incentive effect is reinforced in  
155 an open economy considering access to international capital markets. So, whether it is an open or closed economy, a  
156 relatively small change in the tax rate (or public expenditure) can precipitate the economy into a long period of  
157 stagnation or decline if these policies destroy incentives favorable to growth. They conclude that public policies  
158 through the incentive effects can influence the growth rate.

159 For Tanzi et Zee (1997), public spending can affect the rate of economic growth through at least two ways: directly,  
160 by increasing the capital stock of the economy via, for example, public investment in infrastructure (which can be  
161 complementary to private investment); indirectly, by increasing the marginal productivity of the factors of  
162 production offered by the private sector, through spending on education, health and other services that contribute to  
163 the accumulation of human capital. With regard to the first channel, it should be noted that public capital, like any  
164 other factor of production, is subject to diminishing marginal returns. As a result, excessive public spending on  
165 infrastructure (relative to private investment) can be inefficient. On the other hand, the effect of public investment  
166 on private investment and growth may depend on the form of taxation used to finance it.

167 Further, authors empirically showed that public spending effects on economic growth can be positive and negative.

168 On one hand, Easterly et Rebelo (1993), Devarajan, Swaroop, et Zou (1996), Yasin (2000), Nubukpo (2003), Adam  
169 et Bevan (2005), Bose, Haque, et Osborn (2007), Gosh et Gregoriou (2008), Yu, Fan, et Saurkar (2009), Gemmell,  
170 Kneller, et Sanz (2015), Chu et al. (2020) found a positive relationship between public spending and economic  
171 growth.

172 In effect, Easterly et Rebelo (1993) using a cross-sectional approach, found that government spending on transport  
173 and communication has a positive impact on economic growth. Devarajan, Swaroop, et Zou (1996) examined public  
174 expenditure-economic growth nexus for 43 developing countries for 1970-1990. Using the OLS method to test the  
175 hypothesis that the economic impact of each type of spending could depend on the share allocated to it, they found  
176 that a 1% increase in the ratio of current public expenditure to GDP increases real GDP per capita by 0.05%.

177 Yasin (2000) applied fixed-effects and random-effects techniques to examine the effect of government spending on  
178 economic growth in 26 sub-Saharan African countries from 1987 to 1997. His results showed a positive relationship

179 between these variables. Nubukpo (2003), considering this relationship in the West African Economic and Monetary  
180 Union (WAEMU) countries for the period 1965-2000, found the same results in the long-run.

181 Adam et Bevan (2005), studying the relationship between public expenditure and economic growth with  
182 disaggregated public spending, found that public expenditure on health, education, infrastructure, defense, and  
183 public administration have a positive effect on economic growth. They obtained these results through the study of 45  
184 developing countries from 1970 to 1999.

185 Also, considering developing countries (30 developing countries), Bose, Haque, et Osborn (2007) examined the  
186 growth effects of government expenditure over the 1970s and 1980s, focusing on disaggregated government  
187 expenditures. They concluded that the impact of public expenditure on economic growth is positive. Their results  
188 showed that public spending on education had a positive effect on economic growth at the disaggregated level,  
189 considering budget constraints and omitted variables.

190 Besides, Gosh et Gregoriou (2008) investigated the relationship between disaggregated government expenditure and  
191 economic growth in 15 developing countries, using the general method of moments (GMM). They found that  
192 government spending on operations and maintenance had a positive impact on economic growth.

193 Yu, Fan, et Saurkar (2009) concluded that public spending in human capital contributes to growth in Africa, and  
194 public spending in agriculture and education contribute to growth in Asia. They found these results after using  
195 dynamic generalized least squares to examine public spending-growth nexus in the case of 44 developing countries  
196 for the period 1980-2004. Gemmill, Kneller, et Sanz (2015) focused on a panel of 17 OECD countries for a period  
197 1972-2008. They used the Pooled Mean Group (PMG) method to analyze the impact of aggregated and  
198 disaggregated public spending on economic growth. They found that public spending on education and  
199 infrastructure contributes to economic growth in the long-run.

200 Also, considering the relationship between aggregated and disaggregated public spending and economic growth,  
201 Chu et al. (2020) found a positive effect of productive government spending on growth for the studied countries.  
202 Furthermore, they found that public expenditure on education, general public services, and housing have a positive  
203 effect on economic growth for high-income countries, while expenditure on health and economic affairs have a  
204 positive impact on growth for low to-middle income countries.

205 On the other hand, authors like Gupta et al. (2003), Romero-Ávila et Strauch (2008), Christie (2012) and Ndambiri  
206 et al. (2012), Altunc et Aydin (2013), Lupu et al. (2018) found a negative effect of public spending on economic  
207 growth

208 Gupta et al. (2003), studying disaggregated public spending-growth nexus, found that current public expenditure has  
209 a negative effect on economic growth. Romero-Ávila et Strauch (2008), also examined a relationship between  
210 aggregated and disaggregated public spending and economic growth for a sample of 15 European countries from  
211 1960 to 2001. Using a fixed-effect model, they found that public spending has a negative effect on GDP per capita



212 (A 1% increase reduces growth by 3.1%); and public consumption, transfers, and income from social security have a  
213 negative effect on growth.

214 Christie (2012) and Ndambiri et al. (2012) used different databases and econometric approaches to analyze the link  
215 between public spending and economic growth. They found a negative relationship between these two variables,  
216 studying 108 developing countries for 1971-2005, and 19 sub-Saharan countries for the period 1982-2000,  
217 respectively. Altunc et Aydin (2013) analyzed the nexus government expenditure-economic growth in three  
218 countries (Turkey, Romania, Bulgaria) for the period 1995-2011. These authors attempt to show if the link between  
219 these two variables is linear or an “inverted U” shape and determine the optimal level of government spending in the  
220 studied countries. They used the ARDL bounds testing approach to find that government spending exceeded the  
221 optimal level, hence reducing the economic growth rate. Lupu et al. (2018) considered the same topic for ten  
222 selected Central and Eastern European countries for 1995-2015. Using an ARDL estimation technique, they showed  
223 that public expenditure on defense, economic affairs, general public services, and social welfare have a negative  
224 impact on economic growth.

225 As seen previously, various econometric studies have attempted to show the relevance of the theory relating to fiscal  
226 policy effectiveness, particularly public expenditure. These empirical studies shed light on theoretical studies,  
227 presented a diversity and sometimes very opposite points, and give an idea of the number of theoretical and  
228 empirical approaches relating to the impact of aggregated and disaggregated public expenditures on economic  
229 growth.

230 Overall, these studies suggested different types of results, and based on the nature of these relationships; public  
231 expenditures are denoted productive (positive relationship) or nonproductive (negative and insignificant  
232 relationship). The next sections try to contribute to this analysis by giving another point of view to this literature.

### 233 **3. Materials and Methods**

#### 234 **3.1 Theoretical model**

235 This analysis is based on the model developed by Devarajan, Swaroop, et Zou (1996) and Chu et al. (2020). These  
236 authors showed the difference between productive and nonproductive growth in their analysis and linked  
237 government expenditure and long-term growth through a constant elasticity of substitution (CES) as follow:

$$238 \quad y = f(k, g_1, g_2) = \left[ \alpha k^{-\xi} + \beta g_1^{-\xi} + \gamma g_2^{-\xi} \right]^{-1/\xi}, \quad (1)$$

239 Where  $k$ , private capital stock,  $g_1$ , productive government spending,  $g_2$  nonproductive government spending. And  
240  $\alpha > 0$ ,  $\beta \geq 0$ ,  $\gamma \geq 0$ ;  $\alpha + \beta + \gamma = 1$ ,  $\xi \geq -1$ .

241 The government expenditure is expressed as

242  $\tau y = g_1 + g_2 = \phi \tau y + (1 - \phi) \tau y$  (2)

243 Where  $\tau$ , a flat rate income tax;  $\phi$ , the share of total government expenditure which goes toward  $g_1$  and  $g_2$ . And

244  $0 \leq \phi \leq 1$ ;  $g_1 = \phi \tau y$ ;  $g_2 = (1 - \phi) \tau y$ .  $\tau$  and  $\phi$  are considered as given. Assuming that the representative agent

245 chooses consumption  $c$ , and capital  $k$  to maximize his welfare, we obtain:

246  $U = \int_0^{\infty} u(c) e^{-\rho t} dt$  (3)

247 With  $\dot{k} = (1 - \tau) y - c$  (4)

248 And  $\rho$ , the rate of time preference. Then, the transformation of the utility function in the isoelastic is:

249  $U(c) = \frac{c^{1-\sigma} - 1}{1-\sigma}$  (5)

250 Where the substitution of (5) into (3) and the maximization of (1); (2) and (4) permits to obtain the next equation

251 which is the equation of consumption growth rate such as:

252  $\lambda = \frac{\dot{c}}{c} = \frac{\alpha(1-\tau) \left\{ \alpha + (g/k)^{-\xi} \left[ \beta \phi^{-\xi} + \gamma (1-\phi)^{-\xi} \right] \right\}^{-(1+\xi)/\xi} - \rho}{\sigma}$  (6)

253 The growth rate of consumption, so called the steady state growth rate of consumption assume that along the steady

254 state growth path, the tax rate  $\tau$  ( $\tau = g/y$ ) is constant. So from (1) and (2), we obtain:

255  $g/k = \left\{ \left[ \tau^{\xi} - \beta \phi^{-\xi} - \gamma (1-\phi)^{-\xi} \right] / \alpha \right\}^{1/\xi}$  (7)

256 From (7) to (6), we have:

257  $\lambda = \frac{\alpha(1-\tau) \left\{ \alpha \tau^{\xi} / \left[ \tau^{\xi} - \beta \phi^{-\xi} - \gamma (1-\phi)^{-\xi} \right] \right\}^{-(1+\xi)/\xi} - \rho}{\sigma}$  (8)

258 From (8), we obtain a relationship between  $\lambda$  and  $g_1$  such as:

$$\frac{d\lambda}{d\phi} = \frac{\alpha(1-\tau)(1+\xi) \left[ \alpha \tau^\xi \right]^{-\frac{(1+\xi)}{\xi}} \left[ \beta \phi^{-(1+\xi)} - \gamma (1-\phi)^{-(1+\xi)} \right]}{\sigma \left[ \tau^\xi - \beta \phi^{-\xi} - \gamma (1-\phi)^{-\xi} \right]^{-1/\xi}} \quad (9)$$

So,  $g_1$  is productive if  $d\lambda/d\phi > 0$ . Assuming  $\lambda$  (from equation (6)) is positive, equation (9) will be positive if

$$(1+\xi) \left[ \beta \phi^{-(1+\xi)} - \gamma (1-\phi)^{-(1+\xi)} \right] > 0 \quad (10)$$

$$\text{Considering } \xi \geq -1, \text{ so } d\lambda/d\phi > 0 \text{ if } \frac{\phi}{1-\phi} < \left( \frac{\beta}{\gamma} \right)^\theta \quad (11)$$

Where  $\theta = 1/(1+\xi)$ , the elasticity of substitution.

To understand the implication of this condition (equation 11), the Cobb-Douglas technology case is considered. In this case,  $\xi = 0$  and  $\theta = 1$ , such as:

$$\frac{\phi}{1-\phi} < \frac{\beta}{\gamma} \quad (12)$$

In this condition, the relative share of public spending devoted to  $g_1$  and  $g_2$  is below their relative output elasticities ( $\beta$  and  $\gamma$  are the output elasticities of  $g_1$  and  $g_2$ , respectively). So, the transfer of resources from  $g_2$  (so called unproductive spending) to  $g_1$  (so called productive spending) will raise the steady-state growth rate. This condition has to be followed by the case where the relative budget shares are below the relative output elasticities.

So from above, we can say that government expenditures influence the growth rate through the marginal production of capital. But this influence depends on the relative productivity of  $g_1$  and  $g_2$  and their relative budget shares  $\theta$  and  $(1-\theta)$ . We can also say that the developed model shows the link between the share of government spending and the long-term growth.

To check this model empirically, we use GDP/k (gross domestic product per capita) as dependent variables and government spending as the main independent variables. As Devarajan et al. (1996), Gosh et Gregoriou (2008), and Chu et al. (2020), we divide government spending into two groups and let the data determine the nature of these groups. If one of these groups contributes to the growth and the second one no, we assume that the first one is productive and the second one nonproductive. The reason of this approach is to show, like Devarajan et al. (1996), Chu et al. (2020), that there are some components of government spending that are growth contributors. Besides, we extend their analysis by considering cross-dependence and endogeneity issues among variables, including

282 government spending on environment protection, corruption and political stability in the model, and examining the  
 283 nonlinear relationship between the studied variables.

284 Clearly, suppose the results show that the sum of public expenditure on education, health, defense, general public  
 285 services, housing, economic affairs contribute to growth, and spending on public order and safety, and recreation  
 286 and social protection do not contribute to growth. In that case, we can say that the first one is productive, while the  
 287 second one is nonproductive.

288 In addition to these variables, we add government spending on environmental protection and some control variables  
 289 to the model. These control variables are investment (Gross fixed capital formation), inflation rate, political stability,  
 290 control of corruption, tax revenue, non-tax revenue, budgetary deficit, or surplus, and crisis.

291 Investment is used to express the effect of physical capital accumulation as in the work of Devarajan et al. (1996);  
 292 Gosh et Gregoriou (2008); Gupta et al. (2005); Gnangoin et al. (2019).

293 Christie (2012); Pushak et al. (2007) indicated the effect of inflation on economic growth in their studies. They  
 294 stated that there is an adverse effect of inflation on growth rate when it is high. So, high inflation reduces the growth  
 295 rate.

296 Political stability and corruption effects on growth are highlights by Shabbir and al. (2016). In their studies, these  
 297 authors showed that political stability and corruption determine growth and influence growth determinants.

298 As stated by Kneller et al. (1999), Bleaney et al. (2001), Bose et al. (2007), Gemmell et al. (2016), Chu et al. (2020),  
 299 we include components of the government budget revenue side to Devarajan et al. (1996) model. In effect, the  
 300 inclusion of these variables (Tax revenue, non-tax revenue, budget surplus, or deficit) permits, as shown by these  
 301 authors, to obtain a more robust coefficient in our estimations. These choices of government budget constraint  
 302 variables are made considering that we are in a closed system in our study. In effect, in a closed system government  
 303 expenditures must be financed by revenue (Revenue=Tax revenue + Non-tax revenue) and or budget surplus /deficit.

304 The last control variable (crisis) reflects the effect of the 2008 world financial crisis on economic growth in the  
 305 studied countries.

306 To study the relationship between productive and nonproductive government spending and economic growth, we  
 307 extend the previous model developed by Devarajan et al. (1996) and Chu et al. (2020) by adding in this model five  
 308 variables: government spending on environmental protection, political stability, control of corruption and crisis. We  
 309 obtain the two following models:

310 
$$G_{it} = a_i + b_t + \alpha_1 G_{it-1} + \beta_1 \left( \frac{g_{pro,it}}{g_{pro,it} + g_{nonpro,it} + g_{env,it}} \right) + \beta_2 \left( \frac{g_{env,it}}{g_{pro,it} + g_{nonpro,it} + g_{env,it}} \right) + \gamma_1 \left( \frac{TR_{it}}{y_{it}} \right) + \gamma_2 \left( \frac{NTR_{it}}{y_{it}} \right) + \gamma_3 \left( \frac{Def_{it} / Sur_{it}}{y_{it}} \right) + \sum_{l=1}^k \sigma_l I_{lit} + \mu_{it}$$
  
 311 (13)

312 
$$G_{it} = a_i + b_i + \alpha_i G_{it-1} + \beta_3 \left( \frac{g_{nonpro,it}}{g_{pro,it} + g_{nonpro,it} + g_{env,it}} \right) + \beta_4 \left( \frac{g_{env,it}}{g_{pro,it} + g_{nonpro,it} + g_{env,it}} \right) + \gamma_4 \left( \frac{TR_{it}}{y_{it}} \right) + \gamma_5 \left( \frac{NTR_{it}}{y_{it}} \right) + \gamma_6 \left( \frac{Def_{it} / Sur_{it}}{y_{it}} \right) + \sum_{l=1}^k \sigma_l I_{lit} + \mu_{it}$$

313 (14)

314 We express these dynamic models with respect to the work of Bleaney et al. (2001), Bose et al (2007) and, Gupta et  
 315 al. (2005), Arsic et al. (2017), Van Eyden et al (2019). In effect, a lagged dependent variable is included among the  
 316 regressors to capture the economic growth process dynamic nature.

317 The equations (13) and (14), analyzing the relationship between productive government expenditure and economic  
 318 growth and nonproductive government expenditure and economic growth, respectively.

319 In these equations (13) and (14),  $i$  and  $t$  denote the cross-sectional and time-series dimensions, respectively,  
 320 capturing the time-invariant unobserved country-specific fixed effects and the unobserved individual-invariant time  
 321 effects.

322  $G$ , corresponding to growth rate per capita;

323  $G_{it-1}$ , is the lagged growth rate per capita;

324  $\frac{g_{pro}}{g_{pro} + g_{nonpro} + g_{env}}$ , is productive expenditure as a proportion of total government expenditure (TGE);

325  $\frac{g_{nonpro}}{g_{pro} + g_{nonpro} + g_{env}}$ , is nonproductive expenditure as a proportion of total government expenditure (TGE);

326  $\frac{g_{env}}{g_{pro} + g_{nonpro} + g_{env}}$ , is government expenditure on environmental protection as a proportion of total government  
 327 expenditure (TGE);

328  $g_{pro} + g_{nonpro} + g_{env}$ , is total government expenditure (TGE);

329  $\frac{TR}{y}$ , is tax revenue to GDP ratio;

330  $\frac{NTR}{y}$ , is non-tax revenue to GDP ratio;

331  $\frac{Def / Sur}{y}$ , is budget deficit or surplus to GDP ratio with  $\frac{Def / Sur}{y} = \left[ \left( \frac{TR}{y} + \frac{NTR}{y} \right) - \frac{g_{pro} + g_{nonpro} + g_{env}}{y} \right]$ ;

332  $y$ , is GDP;

333  $I_{it}$ , is vector of non-fiscal independent variables (inflation, investment, political stability, control of corruption,  
334 crisis).

### 335 **3.2 Data**

336 In this study, we use annual data of a panel of 35 countries (13 high-income countries, 22 low to middle-income  
337 countries) for 1993-2018 to analyze the link between public spending and economic growth. The studied countries  
338 are Australia; Croatia; Hungary; Iceland; Israel; Kuwait; Macao; Poland; Seychelles; Singapore; United Arab  
339 Emirates; United Kingdom; United States; Albania; Azerbaijan; Belarus; Bulgaria; China; Costa Rica; Egypt; El  
340 Salvador; Georgia; Kosovo; Kyrgyz Republic; Mauritius; Moldova; Mongolia; Romania; Russian Federation; Serbia;  
341 South Africa; Turkey; Ukraine; Uzbekistan; Afghanistan.

342 The classification of countries as high, middle, low-income is according to the World Bank classification. In effect,  
343 for the 2020 fiscal year, low-income countries are defined as countries with a gross national income per capita (GNI  
344 per capita), calculated using the World Atlas method, of 1025\$ or less; middle-income countries are those with a  
345 GNI per capita between 1026\$ and 12375\$; high-income countries are countries with a GNI per capita of 12376\$ or  
346 more. The gross national income (GNI) is calculated by adding gross domestic product to factor incomes from  
347 foreign residents, then subtracting income earned by non-residents.

348 Based on the work of Bleaney et al. (2001), Adam et Bevan (2005), Park (2006), Christie (2012), and Chu et al.  
349 (2020), productive government spending is considered as the sum of public spending in education, health, defense,  
350 housing, economic affairs, and general public services expenditures, while nonproductive expenditure consists of  
351 expenditure on public order and safety, recreation and social protection.

352 According to their availability for each country, data on each fiscal variable are collected from the International  
353 Monetary Fund Government Finance Statistics (IMF, 2019). These data sources give us a consolidated updated  
354 central government records, including sectorial decompositions of government expenditures and total revenues.

355 The remaining data are from the World Development Indicators (World Bank, 2019a) and the World Governance  
356 Indicators (World Bank, 2019b). All these data can be described as following (Table 1):

- 357 • Growth rate, which is annual per capita GDP in percentage, for country  $i$  during period  $t$ ;
- 358 • Lagged growth rate, which is annual per capita GDP in percentage, for country  $i$  during period  $t-1$ .
- 359 • Productive spending, which is the sum of public spending on education, health, defense, housing, economic  
360 affairs and general public services expenditures. It is measured in percentage of total government  
361 expenditure;
- 362 • Nonproductive spending, which is the sum of expenditure on public services in order and safety, and  
363 recreation and social protection. It is measured in percentage of total government expenditure;

- 364 • Public spending on environmental protection, which includes spending for: waste management, waste  
365 water management, pollution abatement, protection of biodiversity and landscape, research and  
366 development environment protection, and environmental protection not elsewhere classified (n.e.c). It is  
367 measured in percentage of total government expenditure ;
- 368 • Public spending on general public services, which includes spending for: executive and legislative organs,  
369 financial and fiscal affairs, general services, basic research, external affairs, research and development  
370 general public services, general public services not elsewhere classified (n.e.c). It also includes foreign  
371 economic aid, public debt transactions and transfers of a general character between different levels of  
372 government. It is measured in percentage of total government expenditure;
- 373 • Public spending on defense, which includes spending for: military defense, civil defense, foreign military  
374 aid, research and development defense and defense not elsewhere classified (n.e.c). It is measured in  
375 percentage of total government expenditure;
- 376 • Public spending on public order and safety, which includes spending for: police services, fire protection  
377 services, law courts, prisons, research and development public order and safety, and public order and safety  
378 not elsewhere classified (n.e.c). It is measured in percentage of total government expenditure;
- 379 • Public spending on economic affairs, which includes spending for : general economic , commercial and  
380 labor affairs, agriculture, forestry, fishing and hunting, fuel and energy, mining, manufacturing and  
381 construction, transport, communication, others industries, research and development economic affairs and  
382 economic affairs not elsewhere classified (n.e.c). It is measured in percentage of total government  
383 expenditure;
- 384 • Public spending on housing and community amenities, which includes public spending for: housing  
385 development, community development, water supply, street lighting, research and development housing  
386 and community amenities, housing and community amenities not elsewhere classified (n.e.c). It is  
387 measured in percentage of total government expenditure;
- 388 • Public spending on health, which includes public spending for: medical products, appliances and  
389 equipment, outpatient services, hospital services, public health services, research and development health,  
390 and health not elsewhere classified. It is measured in percentage of total government expenditure;
- 391 • Public spending on recreation, culture and religion, which includes public spending for: recreational and  
392 sporting services, cultural services, broadcasting and publishing services, religious and other community  
393 services, research and development recreation, culture and religion, recreation, and culture and religion not  
394 elsewhere classified (n.e.c). It is measured in percentage of total government expenditure;
- 395 • Public spending on education, which includes public spending for: pre-primary and primary education,  
396 secondary education, post-secondary non-tertiary education, tertiary education, education not defined by  
397 level, subsidiary services to education, research and development education, and education not elsewhere  
398 classified (n.e.c). It is measured in percentage of total government expenditure;
- 399 • Public spending on social protection which includes public spending for: sickness and disability, old age,  
400 survivors, family and children, unemployment, housing, social exclusion not elsewhere classified , research

- 401 and development social protection, and social protection not elsewhere classified (n.e.c). It is measured in  
 402 percentage of total government expenditure;
- 403 • Non tax revenue, which is the government revenue from sources other than taxes such as grants and other  
 404 revenue. It is measured in percentage of GDP;
  - 405 • Tax revenue, which is the government revenue collected from taxes on income, profit and capital gains,  
 406 taxes on payroll and workforce, taxes on property, taxes on goods and services, taxes on international trade  
 407 and transactions, social contributions, and other taxes. It is measured in percentage of GDP;
  - 408 • Deficit or Surplus, which is the negative or positive difference between government revenue and spending  
 409 during a set period. It is expressed in percentage of GDP;
  - 410 • Inflation (i.e., GDP deflator) which is an increases in the general level of prices of goods and services. It is  
 411 measured in percentage;
  - 412 • Investment (i.e., gross fixed capital formation) which shows how much of the new value-added in the  
 413 economy is invested rather than consumed. It is considered as private investment and expressed in  
 414 percentage of GDP;
  - 415 • Political stability and absence of violence or terrorism which measures perceptions of the likelihood of  
 416 political instability and/or politically-motivated violence, including terrorism. It is ranges from -2.5 (high  
 417 instability) to 2.5 (strong stability);
  - 418 • Control of corruption which reflects perceptions of the extent to which public power is exercised for private  
 419 gain, including both petty and grand forms of corruption. It is ranges from -2.5 (weak governance  
 420 performance) to 2.5 (strong governance performance).
  - 421 • Crisis which reflects the effects of the 2008 financial crisis during the studied period. It is a dummy  
 422 variable.

423 **Table 1 Variables description**

Variables	Description	Unit
GDP/k	Gross domestic product per capita annual growth	percentage
DGDP/k	Lagged gross domestic product per capita annual growth	percentage
Prod	Public productive spending	percentage of TGE
Nonprod	Public nonproductive spending	percentage of TGE
General	Public spending on general public services	percentage of TGE
Defense	Public spending on defense	percentage of TGE
Order	Public spending on public order and safety	percentage of TGE
Affairs	Public spending on economic affairs	percentage of TGE
Env	Public spending on environmental protection	percentage of TGE
Housing	Public spending on housing and community amenities	percentage of TGE
Health	Public spending on health	percentage of TGE



Recreation	Public spending on recreation, culture and religion	percentage of TGE
Edu	Public spending on education	percentage of TGE
Social	Public spending on social protection	percentage of TGE
Nontax	Non tax revenue	percentage of GDP
Tax	Tax revenue	percentage of GDP
Def/Sur	Deficit or Surplus	percentage of GDP
Inf	Inflation	percentage
GFCF	Investment	percentage of GDP
Stab	Political stability	range
Corr	Control of Corruption	range
Crisis	2008 financial crisis	dummy

424

425 Before analyzing the relationship between our variables, we apply, as Devarajan et al. (1996), Gosh et Gregoriou  
426 (2008), Chu et al. (2020), five years moving average for all variables. In so doing, we attempt to eliminate business  
427 cycle effects and smooth out short-term fluctuations in the studied panel. We also plan to increase the number of  
428 time observations, minimize the reverse causality argument holding in the model, and account for endogeneity.

429 Given that the study makes use of a dynamic growth model specification, and to deal with different types of  
430 econometric issues, and ensure robust results, different estimators are applied to the dataset. There are the ordinary  
431 least square (OLS) fixed-effects, the pooled standard errors Driscoll-Kraay analysis, the feasible generalized least  
432 squares (FGLS), and the Arellano-Bond generalized method of moments (GMM) with orthogonal deviations. We  
433 analyze our data using these four estimators because, according to Ehigiamusoe et Lean (2018), using multiple  
434 estimators permits to have robust and reliable coefficients.

### 435 3.3. Estimation procedure

436 We start this estimation by studying the data through descriptive analysis, panel unit root tests, and diagnostic tests.  
437 Then, we analyze the relationship between the dependent and independent variables using OLS fixed effects,  
438 Driscoll-Kraay pooled OLS with standard errors, feasible generalized least squares (FGLS), and the difference  
439 GMM with orthogonal deviations.

#### 440 3.3.1 Panel unit root tests

441 After data descriptive analysis, we perform three different types of unit root tests; so-called first generation unit root  
442 tests (See Appendix, Table A1 and A2) to check the variables stationnarity. These tests are, respectively, the Levin,  
443 Lin, and Chu or LLC test (Levin et al., 2002), the Im, Pesaran, et Shin (Im et al., 2003) or IPS test, and the ADF –  
444 Fisher developed by Maddala et Wu (1999), and Choi (2001).

445 The LLC test (Levin et al., 2002) is the most widely used panel unit root test. It is based on the Augmented-Dickey  
 446 Fuller (ADF) test but in panel settings. The LLC test is specified as follow:

$$447 \quad \Delta y_{it} = \alpha_i + \beta_i y_{it-1} + \sum_{j=1}^{p_i} p_i \Delta y_{it-j} + e_{it} \quad (15)$$

448 Where  $\Delta$  is the first difference operator,  $y_{it}$  is the series of observations for country  $i$  for  $t=1, \dots, T$  periods. We test  
 449 the null hypothesis of  $\beta_i = \beta = 0$  for all  $i$  against the alternative of  $H_1 = \beta = \beta_i < 0$ , which presumes that all  
 450 series are stationary. The LLC procedure proceeds from the assumption of homogeneity in all panel units; however,  
 451 it has low power in the case of small samples because of serial correlation that cannot be removed with this test.  $\beta_i$   
 452 is identical across countries.

453 IPS test (Im et al., 2003) is an extension of the LLC test that relaxed the homogenous assumptions by allowing for  
 454 heterogeneity in the autoregressive coefficients for all panel members ( $\beta$  varies across units under the alternative  
 455 hypothesis). This test also removes serial correlation and in this way has the ability to test small samples (Wang et  
 456 al., 2011).

457 The last test is the ADF-Fisher test developed by Maddala et Wu (1999), and Choi (2001). This test is a non-  
 458 parametric and exact test, which allows heterogeneity in panel units as much as possible and don't require panel  
 459 balance.

### 460 3.3.2. The panel fixed effect approach and diagnostic tests

#### 461 a. The panel fixed-effects approach

462 As the variables stationary at level, we estimate the model through OLS panel fixed-effects procedure. The OLS  
 463 fixed-effects permits to address the presence of an unobserved country effect generally encountered in panel data.  
 464 This model also permits to deal with heterogeneity in data. The fixed-effect model assumes that the relationships  
 465 between variables are the same for all individuals.

466 By using fixed-effects approach, we assume that something within the individual may impact or bias dependent or  
 467 independent variables and we need to control for this. The fixed-effect approach removes the effect of time-invariant  
 468 characteristics so we can assess the net effect of the independent on the dependent variable. The model is then  
 469 written as follows:

$$470 \quad GDP / k_{it} = a_i + \delta_1 DGDGDP / k_{it} + \delta_2 Pr od_{it} + \delta_3 Env_{it} + \delta_4 Controls_{it} + \varepsilon_{it} \quad (16)$$

$$471 \quad GDP / k_{it} = a_i + \delta_5 DGDGDP / k_{it} + \delta_6 Nonprod_{it} + \delta_7 Env_{it} + \delta_8 Controls_{it} + \varepsilon_{it} \quad (17)$$

472 Where  $a_i$ , encompasses all observable effects and characterizes an estimated conditional average. For this fixed-  
473 effects approach,  $a_i$  is a consistent term specific to country  $i$ ;

474  $i=1, \dots, N$ , the number of panels;  $t=1, \dots, T$ ; the number of period in panel  $i$ , and

475  $GDP/k_{it}$ , is the dependent variable representing economic growth;

476  $Prod_{it}$ ,  $Nonprod_{it}$ ,  $Env_{it}$  are the main explanatory variables representing productive public spending,  
477 nonproductive public spending and public spending on environmental protection, respectively;

478  $Controls_{it}$  denotes a group of control variables, which have an influence on dependent variable and vary over  $t$  and  
479  $i$  such as  $Controls_{it} = [gfcf_{it}, stab_{it}, inf_{it}, tax_{it}, nontax_{it}, sur / def_{it}, crisis_{it}]$ ;

480  $\varepsilon_{it}$ , is the error term. The variables of these different equations are presented in Table (4).

#### 481 **b. Diagnostics test**

482 We consider the variance inflation factor (VIF) test to address the likely issue of multicollinearity among  
483 independent variables by removing the highly correlated variables from the regressions (See Appendix Tables A3,  
484 A4, A5 and A6). The VIF test shows how much an estimated coefficient's variance increases ("inflates") due to the  
485 problem of multicollinearity with other independent variables. Although the lower bound of the VIF is 1, there is no  
486 consensus about the upper bound beyond which multicollinearity arises. Hence, we assume that there is a  
487 multicollinearity problem when a VIF is greater than 10, following previous studies (Marquardt, 1970; Neter et al.,  
488 1989; Kennedy, 1992; Hair et al., 1995; Dormann et al., 2013; El-Bannany, 2017).

489 We also apply the Wooldridge test (2002), and the cross-sectional dependence test, following the methodology of  
490 Breusch-Pagan (1980), and Pesaran (2004) (Table 8).

491 The Wooldridge test, which is an autocorrelation test for panel data, follows the null hypothesis that there is no  
492 serial correlation among variables against the hypothesis that there is a serial correlation. The cross-dependence tests  
493 are respectively, the Breush-Pagan LM test and the Pesaran test.

494 The Lagrange multiplier statistics proposed by Breusch and Pagan (Breusch-Pagan LM), to test cross-sectional  
495 dependence is specified as follow:

$$496 \quad CD_{BP} = \sum_{i=1}^{N-1} \sum_{j=i+1}^N \hat{\rho}_{ij}^2 \quad (18)$$

497 Where  $\hat{\rho}_{ij}$  represents the sample estimate of the pair-wise correlation coefficient of the residuals from Ordinary  
 498 Least Squares (OLS) estimations. The LM test is valid under the null hypothesis of no cross-sectional dependence  
 499 for panels in which  $T \rightarrow \infty$  with fixed N.

500  $CD_{BP}$  is asymptotically distributed as chi-squared with  $N(N-1)/2$  degrees of freedom. For large panels where T  
 501 and N tend to infinity, Pesaran (2004) developed the scaled version of the LM test ( $CD_{LM}$ ) as follows:

$$502 \quad \sum_{i=1}^{N-1} \sum_{j=i+1}^N \left( T \hat{\rho}_{ij}^2 - 1 \right) \square N(0,1) \quad (19)$$

503 However, the scaled version of the LM test in Equation (19) is likely to exhibit substantial size distortions for N  
 504 large and T small. Pesaran (2004) developed a more general cross-sectional dependence test that is valid for panel  
 505 data where  $T \rightarrow \infty$  and  $N \rightarrow \infty$ .

$$506 \quad CD - \sqrt{\left( \frac{2T}{N(N-1)} \right)} \left( \sum_{i=1}^{N-1} \sum_{j=i+1}^N \hat{\rho}_{ij} \right) \square N(0,1) \quad (20)$$

507 In so doing, Pesaran (2004) shows that the CD test is robust for heterogeneous dynamic models. This test null  
 508 hypothesis assumes the independence of the cross-section unit. So, based on the results, we found a cross-sectional  
 509 dependence between panel time series.

510 As these tests show the presence of autocorrelation (Wooldridge, 2002) and cross-sectional dependence among  
 511 variables (Breusch-Pagan, 1980; Pesaran, 2004), we apply second-generation unit root tests to analyze stationarity  
 512 between variables.

513 In effect, after confirming the presence of cross-dependence among variables, we apply a robust panel unit root  
 514 estimation technique which takes account of cross dependence while checking variables stationarity. Pesaran (2007)  
 515 suggested the adoption of Dickey-Fuller based panel unit root tests to account for cross-dependence and  
 516 heterogeneity in the series. Additionally, the test proposed by Pesaran (2007) displays better statistical properties  
 517 over conventional stationarity tests (First generation tests), which motivated our choice. The cross-sectionally  
 518 augmented Dickey-Fuller (CADF) proposed by Pesaran (2007) is also considered as second generation unit root test.  
 519 It can be expressed as follows:

$$520 \quad y_{i,t} = (1 - \delta_i) \mu_i + \delta_i y_{i,t-1} + v_{i,t} \quad (21)$$

521 Where  $v_{i,t} = \gamma_i f_t + e_{i,t}$ , with  $f_t$ , the observed common factor,  $e_{i,t}$  is the individual-specific error. To account for  
 522 unit root hypotheses, equation (21) can be specified as:

523 
$$\Delta y_{i,t} = \alpha_i + \beta_i y_{i,t-1} + \gamma_i f_t + e_{i,t} \quad (22)$$

524  $\alpha_i = (1 - \delta_i) \mu_i$ ,  $\beta_i = -(1 - \delta_i)$ , and  $\Delta y_{i,t} = y_{i,t} - y_{i,t-1}$ . The null hypothesis of unit root test is given by

525  $H_0 : \beta_i = 0$ , for all  $i$  against the alternative hypothesis  $H_1 : \beta_i < 0$  for  $i=1, 2, \dots, N_1$ ;

526  $\beta_i = 0$  for  $i= N_1 + 1, N_1 + 2, \dots, N$ . The following CADF regression is used in Pesaran (2007) to test the above

527 hypothesis.

528 
$$\Delta y_{i,t} = a_i + b_i y_{i,t-1} + D_0 \bar{y}_{t-1} + D_i \Delta \bar{y}_t + \varepsilon_{i,t} \quad (23)$$

529 where  $\bar{y}$  is the proposed proxy of the unobservable common factor proposed by Pesaran (2007) to remove the  
 530 cross-section dependence due to a common shock which affect all the units similarly. The Pesaran (2007) CADF  
 531 unit root test has also good properties and can account for serial correlation.

532 In the next step, we applied the Driscoll and Kraay pooled OLS with standard errors and the feasible generalized  
 533 least square approach (FGLS) that correct autocorrelation and cross-dependence between variables. We then apply  
 534 the difference GMM with orthogonal deviations which takes account of potential endogeneity and bias among  
 535 variables.

536 **3.3.3 The Driscoll and Kraay approach and the feasible generalized least square (FGLS)**

537 In the presence of cross-dependence and serial correlation, the most appropriate choice is the pooled OLS standard  
 538 errors developed by Driscoll et Kraay (1998), the Panel Corrected Standard Errors (PCSE), and the Feasible  
 539 Generalized Least Squares (FGLS) estimators. In effect, these estimators are robust to cross-sectional dependence,  
 540 serial correlation, and heteroscedasticity of the residuals across panel. Besides, the pooled OLS standard errors  
 541 Driscoll et Kraay (1998) use a nonparametric method to estimate the standard errors and is robust to  
 542 heteroscedasticity and auto-correlated errors between panels.

543 The choice between the PCSE and the FGLS estimators depends on the relationship between the cross-sectional  
 544 dimension (N) and the time-series dimension (T). The PCSE is employed in the case of N higher than T, while  
 545 FGLS when T is higher than N for all groups of countries. As in our study case, T is higher than N, we estimate the  
 546 model using the feasible generalized least squares (FGLS) from Parks (1967), and Kmenta (1986) and the robust  
 547 standard errors pooled OLS regression proposed by Driscoll et Kraay (1998). Specifically, we adopted the xtglm  
 548 program for FGLS and xtsc program developed by Hoechle (2007) when using STATA software. This Hoechle  
 549 (2007) procedure is suitable for balanced and unbalanced panel data that allows cross-sectional dependence across  
 550 countries. The FGLS estimator is used here to check the robustness of Driscoll-Kraay estimator results.

551 The following equations are estimated using pooled OLS standard errors Driscoll et Kraay (1998) estimation:

552  $GDP/k_{it} = \delta_0 + \delta_1 DGDP/k_{it} + \delta_2 Prod_{it} + \delta_3 Env_{it} + \delta_4 Controls_{it} + \varepsilon_{it}$  (24)

553  $GDP/k_{it} = \delta_0 + \delta_5 DGDP/k_{it} + \delta_6 Nonprod_{it} + \delta_7 Env_{it} + \delta_8 Controls_{it} + \varepsilon_{it}$  (25)

554 Where

555  $i=1, \dots, N$ , the number of panels;  $t=1, \dots, T$ ; the number of period in panel  $i$ , and  $GDP/k_{it}$ , is the dependent  
556 variable representing economic growth;

557  $Prod_{it}$ ,  $Nonprod_{it}$ ,  $Env_{it}$  are the main explanatory variables representing productive public spending, nonproductive  
558 public spending and public spending on environmental protection, respectively;

559  $Controls_{it}$  denotes a group of control variables, which have an influence on dependent variable and vary over  $t$  and  
560  $i$  such as  $Controls_{it} = [gfcf_{it}, stab_{it}, inf_{it}, tax_{it}, nontax_{it}, sur / def_{it}, crisis_{it}]$ ;

561  $\varepsilon_{it}$ , is the error term. The variables of these different equations are presented in Table (4).

### 562 3.3.4 The generalized method of moments with orthogonal deviations.

563 In the study of the relationship between fiscal policy (government expenditure or tax rate) and economic growth,  
564 many authors (Barro, 1990; Devarajan et al., 1996) have used the OLS fixed-effects model. But, the GMM  
565 (generalized method of moments) single equation model can capture the endogeneity aspects of the model better,  
566 given the cross-country heterogeneity in the data (Gosh et Gregoriou, 2008). That is why we use this approach to  
567 confirm our analysis results. In effect, the OLS fixed-effects model and Instrumental variables are often applied to  
568 panel estimations. Even though these methods are extensively used in the panel literature, they fail to capture cross-  
569 country heterogeneity. In order to capture the cross-country heterogeneity in the data, avoid endogeneity issues, and  
570 eliminate dynamic panel bias, we use the difference GMM estimator with orthogonal deviations. The difference  
571 GMM with orthogonal deviations can be applied in the case of  $T > N$  (see Anderson et Hsiao, 1981; Arellano et  
572 Bond, 1991; Van Eyden et al., 2019).

573 The difference GMM with orthogonal deviations used in this analysis is the generalized method of moments  
574 approach proposed by Anderson et Hsiao (1981) and implemented by Arellano et Bond (1991) in their estimation  
575 procedure. This procedure addresses the dynamic nature of economic growth, considers the potential bias of order  
576  $1/T$ , which can happen when using dynamic models, and takes account of endogeneity.

577 In effect, the instrumental variable estimation method proposed by Anderson et Hsiao (1981) in their work offers  
578 consistent but not necessarily efficient estimates because it does not make use of all available moments conditions  
579 and it does not take into account the differenced structure on the residual disturbance. Arellano et Bond (1991) fixed  
580 this problem through their GMM estimation procedure. In effect, they argue that additional instruments can be

581 obtained in a dynamic panel data model if one utilizes the orthogonality conditions that exist between lagged values  
 582 of the dependent variable and the disturbance term. This transformation consists of first-differencing the model to  
 583 eliminate the individual effect and use all the past information of the dependent variable as instrument. This is  
 584 commonly referred to the difference GMM. Besides, as the model gives post-estimations tests results for  
 585 autocorrelation and over-identification, it permits to confirm the efficiency of instruments and the absence of serial  
 586 correlation, hence the robustness and accuracy of our results.

587 These post-estimations tests suggested by Arellano et Bond (1991), and Blundell et Bond (1998) are the Sargan  
 588 (1958) / Hansen (1982) test for the over-identification restrictions to test the overall validity of instruments and the  
 589 Arellano-Bond serial correlation test conducts to examine the hypothesis that the error term is not serially correlated.

590 The null hypothesis of the Sargan test is  $H_0$ : The instruments as a group are exogenous. So, the higher the p-value  
 591 of the Sargan statistic, the better it is. In the case of robust estimation, The Hansen J statistic is reported instead of  
 592 the Sargan test with the same null hypothesis.

593 The Arellano-Bond test for autocorrelation has a null hypothesis of no autocorrelation and is applied to the  
 594 differenced residuals. The test for first order autocorrelation AR (1) process in first differences usually rejects the  
 595 null hypothesis. However, the test for second order autocorrelation AR (2) in first differences is more important  
 596 because it detects autocorrelation in levels.

597 Based on this approach, we estimate the following equations:

$$598 \quad GDP / k_{it} = \alpha_{it} DGDP / k_{it} + \beta_{it} Pr od_{it} + \sigma_{it} Env_{it} + \gamma_{it} X_{it} + \nu_i + \mu_t + \varepsilon_{it} \quad (26)$$

$$599 \quad GDP / k_{it} = \alpha_{it} DGDP / k_{it} + \beta_{it} Nonprod_{it} + \sigma_{it} Env_{it} + \gamma_{it} X_{it} + \nu_i + \mu_t + \varepsilon_{it} \quad (27)$$

600 Where,

601  $i$  indicates the country ( $i=1, \dots, N$ ) and  $t$ , indicates the time period ( $t=1, \dots, T$ ).

602  $Pr od_{it}$ , is productive spending;  $Nonprod_{it}$ , is nonproductive spending;

603  $Env_{it}$  is public spending for environmental protection;  $X_{it}$ , is a vector of control variables hypothesized to affect  
 604 output growth;  $\alpha, \beta, \sigma, \gamma$  are parameters to be estimated;  $\nu_i$  are country-specific effects;  $\mu_t$ , are period specific  
 605 effects, and  $\varepsilon_{it}$ , the error term.

#### 606 **4. Results and discussion**

607 In light of theoretical studies, this empirical study will allow us to contribute to the economic analysis on this issue  
608 by showing the effectiveness of some theories and highlights their limits. In this section, we will describe the data  
609 before moving to econometric analysis.

610

611

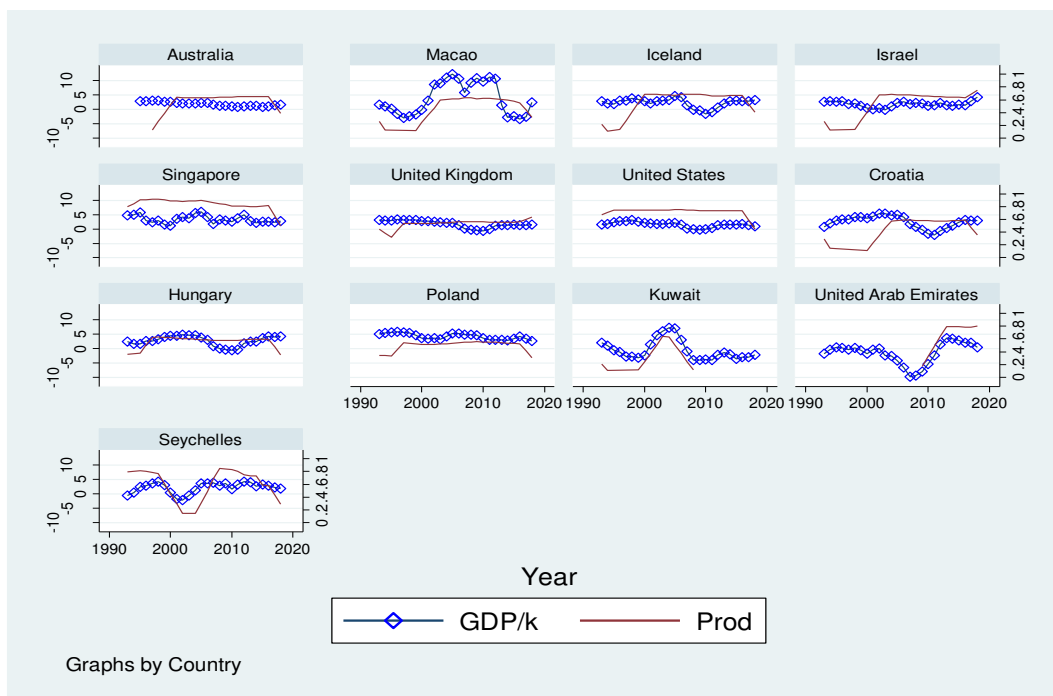
#### 612 4.1 Variables descriptive statistics

613 The evolution of economic growth and productive and nonproductive public spending in the case of low, middle and  
614 high-income countries is presented in the next figures.

615 In figure 1, we see the evolution of productive spending and economic growth from 1993 to 2018 in high income  
616 countries. The X-axis represents years, while Y-axis represents productive spending and economic growth for each  
617 country. The graphs show that from 1993 to 2018, in the case of Australia, Singapore, United Kingdom, United  
618 States, Hungary, Kuwait, United Arab Emirates, productive public spending and economic growth have the same  
619 evolution. Globally, this same evolution appears for each country especially from 2010. The graphs also show that  
620 from 1993 to 2018, in the case of Singapore and United States, productive spending is higher than economic growth  
621 (measured by GDP/k).

622

623



624



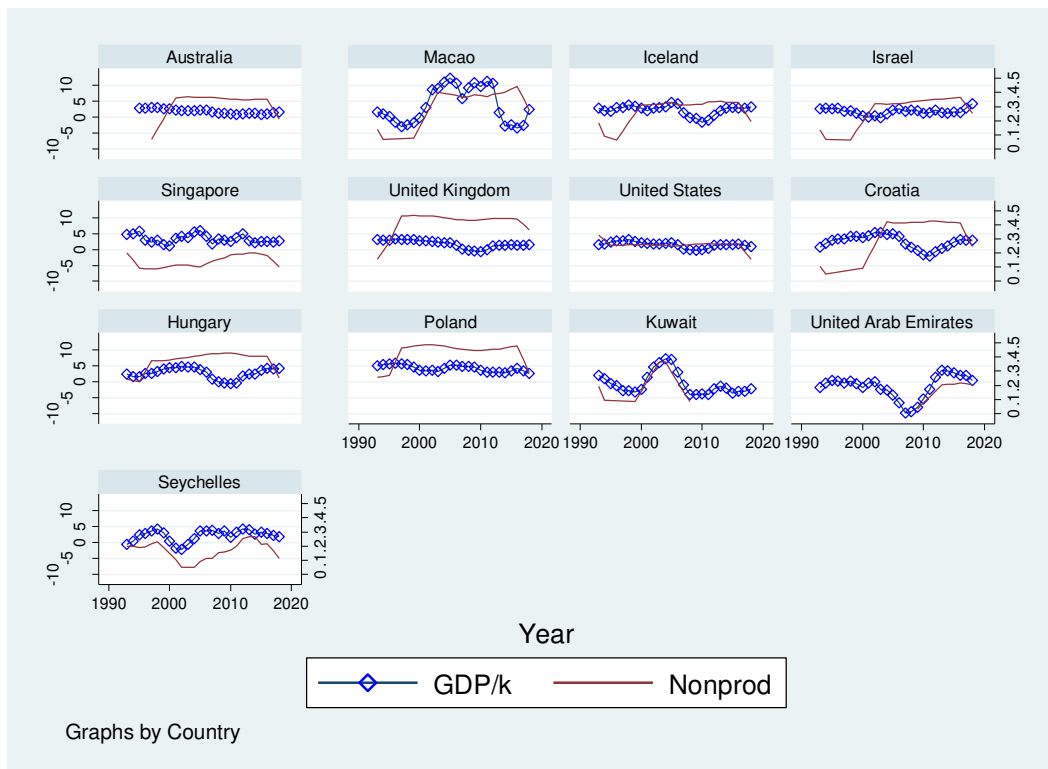
625  
626

**Figure 1: Productive spending and growth in high-income countries**

627 In figure 2, we see the evolution of nonproductive spending and economic growth in high-income countries from  
628 1993 to 2018. The X-axis represents years, while the Y-axis represents nonproductive public spending and economic  
629 growth for each country.

630 The graphs show that, in the case of Australia, Iceland, Singapore, United States, Kuwait, United Arab Emirates, the  
631 evolution of nonproductive and economic growth is globally the same. In the particular case of the United States,  
632 both graphs are mixed. So, we can assume the existence of a relationship between this spending and economic  
633 growth.

634



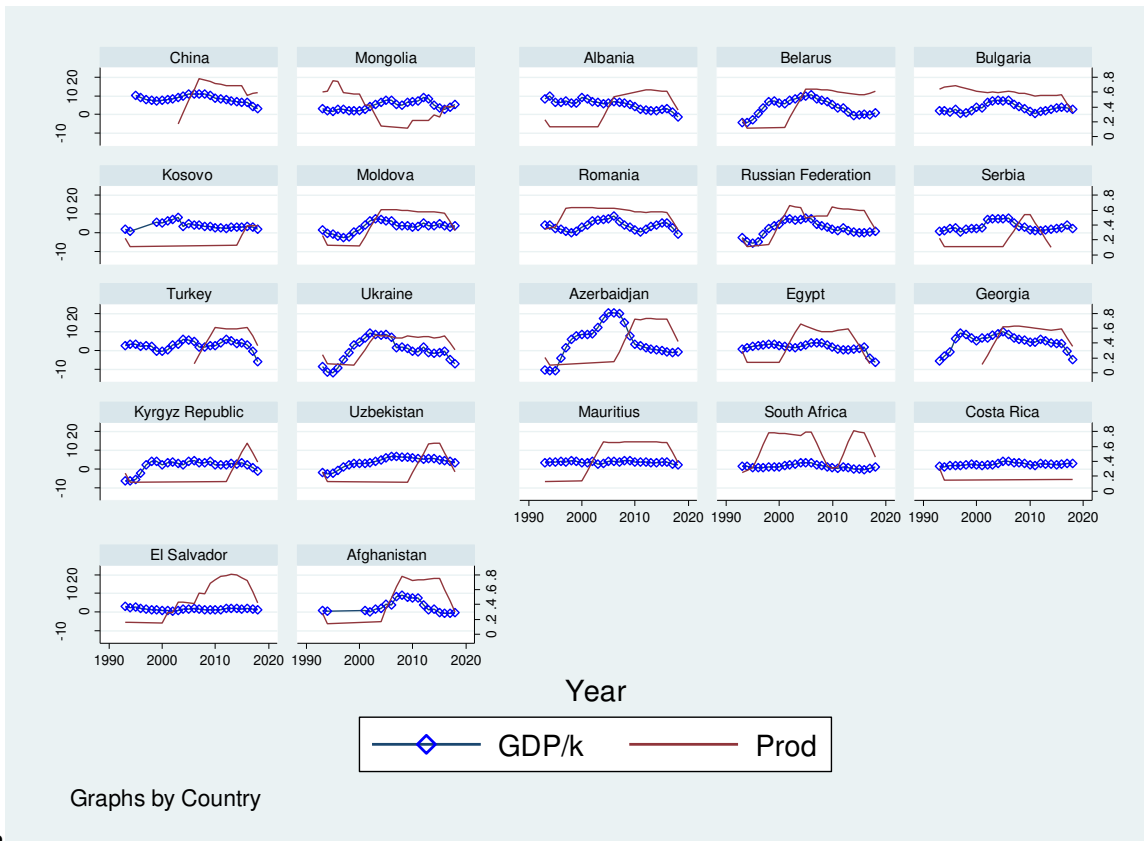
635

**Figure 2: Nonproductive spending and growth in high-income countries**

637

638 In figure 3, we see the evolution of productive spending and economic growth from 1993 to 2018 in low and middle  
639 income countries. The X-axis represents years, while the Y-axis represents productive spending and economic  
640 growth for each country. The graphs show that in the case of Bulgaria, Kosovo, Ukraine and Costa Rica, the trend of  
641 evolution of this spending and economic growth is the same.

642



643

644

**Figure 3: Productive spending and growth in low and middle-income countries**

645

646

In figure 4, we see the evolution of nonproductive spending and economic growth from 1993 to 2018 in low and middle income countries. The X-axis represents years, while the Y-axis represents nonproductive spending and economic growth for each country. The graphs show that in the case of Bulgaria, Kosovo, Moldova, Mauritius, South Africa, Costa Rica, and Afghanistan, the trend of evolution of this spending and economic growth is the same.

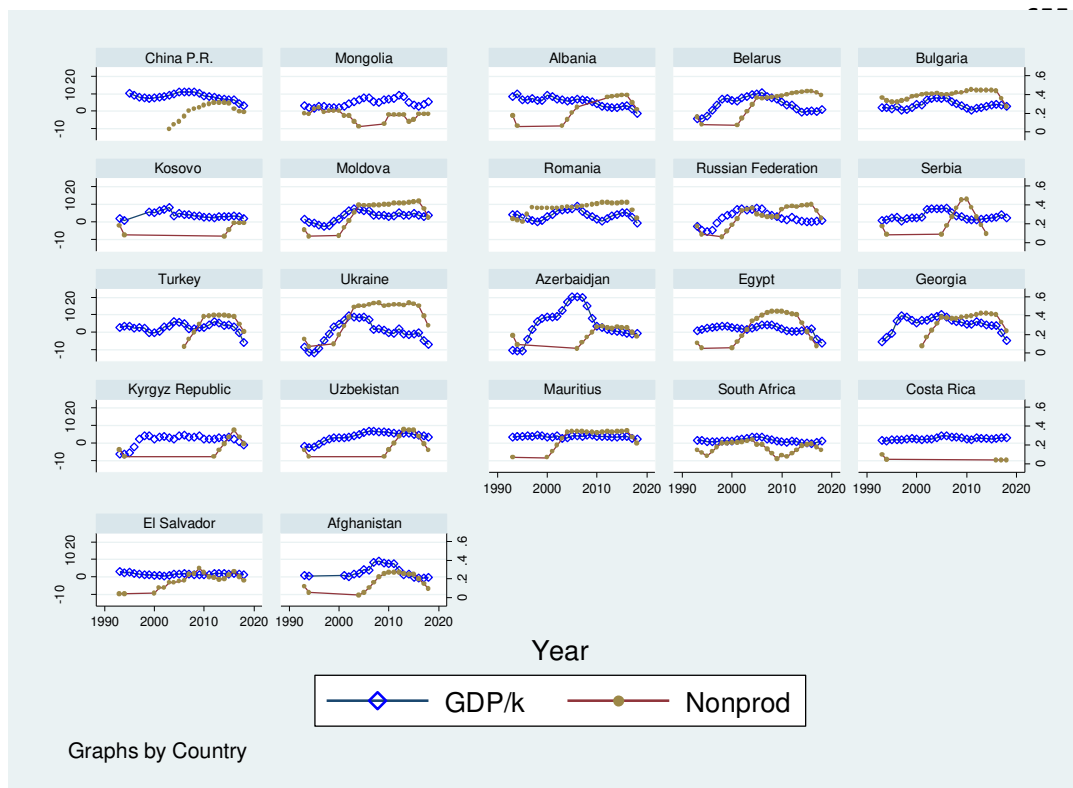
650

651

652

653

654



656

657 **Figure 4: Nonproductive spending and growth in low and middle-income countries**

658

659 The next table (table 2) shows the summary statistics of the data. It gives a detailed description of all the variables  
 660 analyzed in this work. The investigated period is 25 years, and the number of countries is 35. We can see that high-  
 661 income countries have a lower average growth rate than low and middle income countries, at 1.97% and 3.32%,  
 662 respectively. Besides, we found that 23.83% of total expenditures of high-income countries are allocated to  
 663 environment protection, while only 17.19 % is allocated to this spending. We also found that the percentage of total  
 664 spending allocated to productive spending is higher in the case of low and middle income countries (63.29%) than  
 665 those in the case of high-income countries (50.36%).

666

667

668

669

670

671 **Table 2 Descriptive statistics**

672

Variables	High income countries (323 observations)		Low and middle income countries (543 observations)	
	Mean	Standard deviation	Mean	Standard deviation
<b>GDP/k</b>	1.967	2.896	3.318	3.680
<b>DGDP/k</b>	1.969	2.900	3.309	3.739
<b>Prod</b>	50.363	26.1	63.291	48.648
<b>Nonprod</b>	25.807	15.1	19.524	16.460
<b>Env</b>	23.830	24.3	17.185	25.026
<b>GFCF</b>	19.548	8.080	22.196	7.420
<b>Inf.</b>	4.002	4.236	71.943	135.983
<b>Stab</b>	0.496	0.537	-0.283	0.648
<b>Corr</b>	0.824	0.669	-0.383	0.468
<b>Def/Sur</b>	1.761	38.498	-1.525	40.156
<b>Tax</b>	25.074	39.590	26.158	7.283
<b>Nontax</b>	13.022	12.217	22.074	1.158

673

674 **4.2 Results and discussion for aggregated data.**

675 **4.2.1 Results and discussion for stationarity tests**

676 The results of cross-dependence panel unit root tests for the studied variables are presented in the next tables (Tables  
677 3 and 4). The results in Table 3 and 4 show that in high-income and low and middle-income countries, the variables  
678 are stationary at level.

679

680

681

682

683

684

685

686 **Table 3 Panel unit root test for high-income countries**

	<b>CADF</b>	
	<b>Level</b>	
<b>GDP/k</b>	-1.739**	(0.041)
<b>DGDP/k</b>	-3.610***	(0.000)
<b>Prod</b>	-5.509***	(0.000)
<b>Nonprod</b>	-6.137***	(0.000)
<b>Env</b>	-1.544**	(0.026)
<b>GFCF</b>	-3.948***	(0.000)
<b>Inf</b>	-1.873**	(0.031)
<b>Stab</b>	-3.439***	(0.000)
<b>Corr</b>	-2.980***	(0.001)
<b>Def/Sur</b>	-2.122*	(0.051)
<b>Tax</b>	-1.934**	(0.027)
<b>Nontax</b>	-1.317*	(0.094)

687 P-value is in parenthesis. \*,\*\*,\*\*\* denote the statistical significance at 10%, 5%, 1% level.

688

689

690

691

692

693

694

695

696

697

698

699

700

701

702

703

704 **Table 4 Panel unit root test for low and middle-income countries**

	<b>CADF</b>	
	<b>Level</b>	
<b>GDP/k</b>	-3.530***	(0.000)
<b>DGDP/k</b>	-4.271***	(0.000)
<b>Prod</b>	-3.671***	(0.000)
<b>Nonprod</b>	-3.481***	(0.000)
<b>Env</b>	-5.860***	(0.000)
<b>GFCF</b>	-2.813***	(0.002)
<b>Inf</b>	-1.970**	(0.024)
<b>Stab</b>	-2.749***	(0.003)
<b>Corr</b>	-4.280***	(0.000)
<b>Def/Sur</b>	-2.600**	(0.027)
<b>Tax</b>	-2.849***	(0.002)
<b>Nontax</b>	-1.849**	(0.032)

705 P-value is in parenthesis. \*,\*\*,\*\*\* denote the statistical significance at 10%, 5%, 1% level.

706 **4.2.2 Results discussion for panel OLS fixed-effects, Driscoll-Kraay, FGLS analysis, and GMM with**  
 707 **orthogonal deviations**

708 The panel OLS fixed-effect has been applied because it permits to address the presence of an unobserved country  
 709 effect generally encountered in panel data, and to deal with heterogeneity in data. So, it assumes that the relationship  
 710 between the dependent variable and the independent variables are the same for all individuals. The OLS fixed effect  
 711 estimator results are presented in Table 5.

712  
 713  
 714  
 715  
 716  
 717  
 718

719 Table 5 Panel fixed effect results

Dependent variable: per capita growth				
	High-income countries (323 observations)		Low-to-middle income countries (543 observations)	
	(1)	(2)	(1)	(2)
<b>DGDP/k</b>	0.805*** (0.000)	0.839*** (0.000)	0.837 *** (0.000)	0.849*** (0.000)
<b>Prod</b>	2.455*** (0.000)		2.191*** (0.000)	
<b>Nonprod</b>		2.244** (0.039)		-3.892*** (0.000)
<b>Env</b>	-0.850** (0.037)	-0.340 (0.400)	0.983** (0.083)	0.979** (0.080)
<b>GFCF</b>	-0.051*** (0.001)	-0.028 (0.058)	0.004 (0.796)	0.006 (0.691)
<b>Inf</b>	0.004 (0.828)	-0.003 (0.899)	-0.001*** (0.000)	- 0.001*** (0.000)
<b>Stab</b>	-0.098 (0.777)	-0.353 (0.314)	-0.024 (0.920)	0.044 (0.853)
<b>Corr</b>	-0.328 (0.250)	-0.102 (0.722)	0.999*** (0.006)	0.964*** (0.007)
<b>Def/Sur</b>	0.003 (0.431)	0.002 (0.605)	0.0005 (0.754)	0.001 (0.549)
<b>Tax</b>	-0.002 (0.685)	-0.004 (0.417)	-0.058*** (0.001)	-0.049*** (0.004)
<b>Nontax</b>	0.027** (0.051)	0.029** (0.035)	0.232** (0.011)	0.201 ( 0.027)
<b>Crisis</b>	-0.274 (0.452)	-0.254 (0.4953)	-0.307 (0.363)	-0.286 (0.396)
<b>No. of countries</b>	13	13	22	22
<b>F-test</b>	61.091*** (0.000)	57.886*** (0.000)	88.946*** (0.000)	89.346*** (0.000)
<b>Hausman test</b>	27.10*** (0.004)	33.08*** (0.003)	33.25*** (0.000)	25.31*** (0.003)
<b>Wooldridge test</b>	144.114*** (0.000)	105.014*** (0.000)	37.380*** (0.000)	36.621*** (0.000)
<b>R-squared</b>	0.824	0.815		

<b>Adj. R-squared</b>	0.810	0.802	0.847	0.848
<b>Breusch-Pagan LM</b>	269.959***	252.783***	0.838	0.839
	(0.000)	(0.000)	469.582***	451.862***
<b>Pesaran CD test</b>			(0.000)	(0.000)
	12.935***	12.074***		
	(0.000)	(0.000)	8.708***	8.357***
			(0.000)	(0.000)

720 P-values are in parenthesis. \*,\*\*,\*\*\* denote the statistical significance at 10%, 5%, 1% level.

721 The post-estimations diagnostic tests showed that the fixed effects are preferred to OLS approach and random effect.  
722 In effect, this model is chose instead of random effect and OLS approach through Hausman (1978) test and F-test,  
723 respectively. The F-test was carried out to test the validity of the fixed effect estimation relative to the pooled OLS  
724 and the Hausman (1978) test was conducted to see the appropriateness of the fixed vs. random estimations  
725 approaches. So, the p-values of F-test ( $p < 0.01$ ) and Hausman test ( $p < 0.01$ ) lead us to choose fixed effect  
726 approach instead of OLS and random effects.

727 The robust standard errors pooled OLS Driscoll-Kraay (1998) has been applied because this estimator overcomes  
728 serial correlation and heterogeneity issues.

729 The Driscoll-Kraay estimator results (Table 6) show that:

- 730 • Productive spending in the percentage of total government expenditure has a positive effect on economic  
731 growth in low, middle, and high-income countries. Besides an increase of 1 point of productive spending in  
732 high-income countries contribute to economic growth by 1.294 point while this increase is by 1.451, in low  
733 and middle-income countries.
- 734 • Nonproductive government spending in the percentage of total government expenditure has a negative  
735 effect on economic growth in the case of low, middle and high-income countries. However, the effect of  
736 this spending in low and middle-income countries (-3.035) is different of those of high income countries (-  
737 1.201).

738 These results are consistent to those of Gemmel et al. (2016), Kimaro et al. (2017), Saez et al (2017), Chu et al.  
739 (2020) as we consider the government budget constraint in our model. In effect, as noted by Bose et al. (2007),  
740 Gemmel et al. (2016), and Chu et al. (2020), taking account of the global budget constraint in the model, permits to  
741 obtain more robust results.

742 We also found that:

- 743 • Public spending on environmental protection (Env) has a positive and significant effect on low-to-middle  
744 income countries economic growth. Hence, this spending can be considered as productive in the case of  
745 low and middle-income countries. This result is consistent with those of Barro et Sala-i-martin (1995).



746 This positive relationship may be due to the fact that this spending which is devoted to activities aimed at the  
747 prevention, reduction and elimination of pollution or any other degradation of the environment, in low or middle-  
748 income countries like China, India, Brazil, Russia, and Mexico, permits to improve the living conditions of  
749 population, thus improve human capital through safe air and water for instance. This improved human capital may  
750 have a better productivity which contributes to generate a green and sustainable growth.

751 In effect, the rapid evolution of low and middle-income economies has certain environmental consequences  
752 (outdoor air, and water pollution) which are damaging for population health. This situation has an impact on this  
753 population productivity, thus economic activity. The World Bank estimated that, in 2013, air pollution cost the  
754 world economy an average of \$225 billion in lost labor income. Besides, the lack of infrastructures makes these  
755 countries particularly vulnerable to the effects of air pollution, water pollution, and soil degradation. Additionally,  
756 there are a lot of difficulties to access to health care and health services, in particular for women and children. So,  
757 this spending will overcome all these issues and contribute to growth.

758 • Inflation (Inf) has a negative and significant effect on low to middle-income countries economic growth.

759 In effect, as these countries economic structure (mainly dependent of the export of raw products such as oil,  
760 petroleum, coffee, cocoa... and the import of manufactured goods and services) and level of development, are  
761 particularly vulnerable to any change in the economy, the fall of the demand of raw product or the increase of the  
762 price of manufactured goods (which are paid in local currency) influences the local market by generating the rise of  
763 prices or the increase of taxes (in the case of the drop of raw product prices). This rising reduces local consumption,  
764 the level of investment, and the efficiency with which productive factors are used, which reduces economic growth.  
765 It effectively reduces the efficient allocation of resources by distorting the information content of prices,  
766 encouraging economic agents to spend more time and resources on gathering information and protecting themselves  
767 against the damages caused by price instability.

768 Another reason can be economic boom. In effect, high growth leads to more employment, which creates a fall of  
769 unemployment. This fall in unemployment puts upward pressure on wages which leads to higher inflation, hence  
770 influence negatively economic growth (the case of United Kingdom, during the late 1980s and the early 1990s when  
771 inflation increase to 8% as a result of high growth).

772 • Control of corruption (Corr) effect is positive and significant for our panel of countries.

773 This result is consistent with studies like Tanzi (1997) and Li et al. (2000) which found a positive link between a fall  
774 of corruption level and economic growth

775 In effect, corruption discourages private investment by generating social discontent which in turn may slow  
776 economic growth (Alesina, 1992). It also influences negatively growth by reducing the effectiveness of public  
777 investment, and reducing tax revenues through compromising the administration ability to collect taxes and fees. In  
778 the presence of corruption, the investments are smaller and/or ineffective, as entrepreneurs are aware that they will

779 have to bribe officials or give them a profit share for a successful implementation of a business. Additionally, when  
780 it takes the form of tax evasion or claiming improper tax exemptions, corruption may bring about loss of tax  
781 revenue, which reduces economic growth.

782 Besides, it generates a misallocation of public funds because a corrupt decision-maker will consider potential  
783 “corruption payments” as one of the decision criteria. It affects the quality of employment because the job does not  
784 go to the most suitable or qualified person but the one who is ready to pay for it or in any other way return the favor.

785 Indirectly, corruption may have a negative impact on economic growth through the allocation of talents, since  
786 prospective students are driven, due to the environment and the situation in the country to choose another major  
787 which would add value to the country.

788 Of particular relevance to developing countries is the possibility that corruption might reduce the effectiveness of  
789 aid flows through the diversion of funds, because the level of corruption discourages donors who scaled back their  
790 assistance, which reduce growth.

- 791 • The relationship between tax revenue (Tax) and economic growth is negative in the case of low-to-middle  
792 income countries while the effect of nontax revenue (Nontax) on growth is positive and significant.

793 This result show, as noted by Kneller et al. (1999), Lee et Gordon (2005), and Prichard (2016) that the effect of  
794 taxes on economic growth may be due to its nature.

795 Here, the negative effect of tax revenue on economic growth is consistent with the results of Ferede et Dahlby  
796 (2012). Taxes are the main and most important tool for collecting public revenues but their negative effect on  
797 growth is related to many factors. Taxes influence the decision to work and deploy capital because taxes affect the  
798 return to labor and capital. Indeed, the individual will to work or invested is affected by what the amount of his  
799 salary or what he will receive after taxes, if the latter is too low, it will discourage the incentive to work and/or the  
800 productivity, which will reduce growth . So, when taxes are too high, that discourages potential investors from  
801 realizing investments in the given countries, they incentives will be to invest in other countries with low taxes.  
802 Considering that the creation of new enterprises or foreign investment permit to create jobs and increase economic  
803 output, this low level of investment will impact negatively on economic growth.

804 The positive effect of nontax revenue on economic growth may be due to the fact that it is additional revenue, not  
805 collected like taxes, which can permit to increase public spending, and make it more efficient, thus contribute to  
806 economic growth.

- 807 • The relationship between financial crisis and economic growth is negative and significant in the case of  
808 high-income countries while its effect is not significant in the case of low and middle-income countries.

809 The financial crisis which started in the United States of America in 2008 had a big impact on world economy. But,  
810 as shown by the estimations results, its impact was different from one country to another.

811 This crisis generated a loss of income and jobs in many countries and its effects was severe in high-income countries  
812 maybe because it started in high-income countries, and financial sector (stock markets, financial activities) is more  
813 developed in high-income (North America, Europe) countries than in middle-income countries (Africa, Latin  
814 America, Asia), where this sector is still in development. It may also show that even there is interdependence among  
815 countries in the world this interdependence might not be strong enough to allow for a transmission of financial crisis  
816 effect from high-income to low and middle-income countries.

817 The negative effect of financial crisis on high-income countries economic growth can be explained by the loss of  
818 income (due to the crisis) in high-income countries.

819 In effect, the loss of income should affect the level of investment which may negatively impact economic growth.  
820 Also, this loss can generate a sharp fall in the demand for goods and services from low and middle-income countries  
821 to high income countries, which can create a decrease of production, so, an increase of unemployment and  
822 inequality in these countries which may negatively influence economic growth.

823

824

825

826

827

828

829

830

831

832

833

834

835

836

837

838 Table 6 Panel Driscoll-Kraay results

Dependent variable: per capita growth				
	High-income countries (323 observations)		Low and middle income countries (543 observations)	
	(1)	(2)	(1)	(2)
<b>DGDP/k</b>	0.853*** (0.000)	0.872*** (0.000)	0.886*** (0.000)	0.883*** (0.000)
<b>Prod</b>	1.294*** (0.003)		1.452*** (0.000)	
<b>Nonprod</b>		-1.201* (0.094)		-3.036*** (0.000)
<b>Env</b>	0.051 (0.796)	-0.057 (0.865)	0.636*** (0.001)	0.957*** (0.000)
<b>GFCF</b>	-0.008 (0.398)	0.006 (0.598)	0.017 (0.320)	0.015 (0.367)
<b>Inf</b>	-0.004 (0.875)	-0.011 (0.601)	-0.001** (0.027)	-0.001** (0.027)
<b>Stab</b>	-0.021 (0.842)	-0.030 (0.770)	0.122 (0.620)	0.197 (0.396)
<b>Corr</b>	0.276** (0.014)	0.120** (0.021)	0.360** (0.024)	0.503** (0.014)
<b>Def/Sur</b>	0.002 (0.881)	0.002 (0.520)	0.0002 (0.910)	0.001 (0.286)

<b>Tax</b>	0.004 (0.373)	0.002 (0.703)	-0.022* (0.066)	-0.035*** (0.002)
<b>Nontax</b>	0.0002 (0.986)	0.005 (0.747)	0.114** (0.016)	0.154* (0.088)
<b>Crisis</b>	-0.381** (0.026)	-0.351** (0.043)	-0.338 (0.130)	-0.337 (0.123)
<b>No. of countries</b>	13	13	22	22

839 P-value is in parenthesis. \*,\*\*,\*\*\* denote the statistical significance at 10%, 5%, 1% level.

840 After analyzing the relationship between public spending and economic through Driscoll-Kraay estimator, we  
841 examine the link between these variables using the FGLS and GMM estimators. We apply FGLS estimator to check  
842 the robustness of Driscoll-Kraay results because this estimator is suitable to overcome cross-dependence and  
843 autocorrelation among variables for  $T > N$ . As the results of FGLS estimation (Table 7) confirm the Driscoll-  
844 Kraay estimator results, we apply the difference GMM with orthogonal deviations proposed by Anderson et Hsiao  
845 (1981) and Arellano et Bond (1991) in their estimation procedure.

846

847

848

849

850

851

852

853

854

855

856

857

Dependent variable: per capita growth				
	High-income countries (323 observations)		Low and middle income countries (543 observations)	
	(1)	(2)	(1)	(2)
<b>DGDP/k</b>	0.853*** (0.000)	0.872*** (0.000)	0.886*** (0.000)	0.883*** (0.000)
<b>Prod</b>	1.294*** (0.002)		1.452*** (0.000)	
<b>Nonprod</b>		-1.201* (0.090)		-3.036*** (0.000)
<b>Env</b>	0.051 (0.820)	-0.057 (0.845)	0.636* (0.076)	0.957*** (0.008)
<b>GFCF</b>	-0.008 (0.470)	0.006 (0.573)	0.017 (0.840)	0.015 (0.123)
<b>Inf</b>	-0.004 (0.842)	-0.011 (0.529)	-0.001*** (0.002)	-0.001*** (0.001)
<b>Stab</b>	-0.021 (0.886)	-0.030 (0.842)	0.122 (0.362)	0.197 (0.138)
<b>Corr</b>	0.277** (0.042)	0.119** (0.035)	0.360** (0.070)	0.503*** (0.012)
<b>Def/Sur</b>	0.002 (0.990)	0.002 (0.512)	0.0001 (0.925)	0.001 (0.453)
<b>Tax</b>	0.004 (0.332)	0.002 (0.651)	-0.022* (0.077)	-0.035*** (0.004)
<b>Nontax</b>	0.0002 (0.983)	0.005 (0.653)	0.114** (0.013)	0.154** (0.041)
<b>Crisis</b>	-0.381* (0.086)	-0.350** (0.030)	-0.338 (0.316)	-0.337 (0.312)
<b>No. of countries</b>	13	13	22	22

859 P-value is in parenthesis. \*, \*\*, \*\*\* denote the statistical significance at 10%, 5%, 1% level.

860 The results of GMM estimator also show that spending considered as productive have positive and significant  
861 impact on economic growth in the case of high and low-to-middle income countries, while spending considered as  
862 nonproductive have a negative and significant impact on economic growth in the case of high-income and low-to-  
863 middle income countries (Table 8).

864 The results also show that, public spending on environment protection (Env) has a positive and significant effect on  
865 low-to-middle income countries economic growth while this effect is not significant in the case of high income  
866 countries. Besides, we found that inflation (Inf) has a negative and significant effect on low to middle-income  
867 countries economic growth; while control of corruption (Corr) effect is positive and significant. The relationship  
868 between tax revenue (Tax) and economic growth is negative in the case of low-to-middle income countries while the  
869 effect of nontax revenue (Nontax) on growth is positive and significant.

870 Finally, the J Hansen test for over-identifications checking confirm the validity of the instruments used (higher p-  
871 value), and the Arellano-Bond AR (2) test for autocorrelation show that there is no serial correlation (higher p-  
872 value). So, the empirical results from these three estimators are robust and consistent.

873 In the next step of this work, we will re-estimate our variables by considering the individuals components of  
874 productive and nonproductive spending.

875

876

877

878

879

880

881

882

883

884

885

886

887

888

Dependent variable: per capita growth				
	High-income countries (323 observations)		Low and middle income countries (543 observations)	
	(1)	(2)	(1)	(2)
<b>DGDP/k</b>	0.847*** (0.000)	0.869 *** (0.000)	0.899*** (0.000)	0.899*** (0.000)
<b>Prod</b>	1.413** (0.031)		1.531** (0.008)	
<b>Nonprod</b>		-1.241** (0.015)		-3.539*** (0.000)
<b>Env</b>	0.042 (0.845)	-0.058 (0.726)	0.589** (0.017)	0.994*** (0.010)
<b>GFCF</b>	-0.009 (0.599)	0.007 (0.654)	0.040 (0.790)	0.036 (0.126)
<b>Inf</b>	-0.004 (0.874)	-0.012 (0.678)	-0.0004** (0.047)	-0.0004 (0.049)
<b>Stab</b>	-0.021 (0.786)	-0.027 (0.740)	0.061 (0.722)	0.142 (0.367)
<b>Corr</b>	0.301** (0.020)	0.128** (0.024)	0.261*** (0.014)	0.426*** (0.009)
<b>Def/Sur</b>	0.002 (0.967)	0.002 (0.931)	0.0003 (0.653)	0.002 (0.571)
<b>Tax</b>	0.003 (0.318)	0.001 (0.637)	-0.020* (0.056)	-0.036*** (0.000)
<b>Nontax</b>	0.001 (0.972)	0.005 (0.686)	0.130** (0.030)	0.182*** (0.000)
<b>Crisis</b>	-0.389** (0.040)	-0.355** (0.047)	-0.378 (0.750)	-0.378 (0.781)
<b>No. of countries</b>	13	13	22	22
<b>AR(1)</b>	-2.49* (0.013)	-2.44* (0.015)	-2.69** (0.007)	-2.69** (0.007)
<b>AR(2)</b>	-1.63 (0.102)	-1.64 (0.100)	-1.45 (0.147)	-1.41 (0.159)
<b>Hansen J test</b>	1.74 (0.999)	0.03 (0.998)	14.62 (0.997)	15.86 (0.997)



891 **4.3 Results and discussion for disaggregated data.**

892 In this part, we disaggregate productive and nonproductive spending in their different components to analyze their  
 893 specific effects on economic growth.

894 **4.3.1 Results and discussion for stationarity tests**

895 In this step, we check the stationarity level of productive and nonproductive spending components before analysis.  
 896 Productive spending is divided in public spending on education, public spending on health, public spending on  
 897 defense, public spending on housing, public spending on economic affairs, public spending on general public  
 898 services. Nonproductive spending is divided in public spending on public order and safety, public spending on  
 899 recreation and public spending on social protection.

900 The results of panel unit root tests for disaggregated productive and nonproductive public spending in the case of  
 901 low, middle, high-income countries are presented in the next tables ( Table 9 and 10). The results in Table 9 and 10  
 902 show that in low, middle and high-income countries, the variables are stationary at level.

903 **Table 9 Panel unit root tests for high-income countries.**

		<b>CADF</b>	
		<b>Level</b>	
<b>Prod</b>	<b>Edu</b>	-1.994**	(0.037)
	<b>Health</b>	-1.778**	(0.038)
	<b>Defence</b>	-2.910***	(0.001)
	<b>Housing</b>	-2.809***	(0.002)
	<b>Economic affairs</b>	-2.867***	(0.002)
	<b>General</b>	-4.416***	(0.000)
<b>Nonprod</b>	<b>Order</b>	-3.801***	(0.000)
	<b>Recreation</b>	-1.746*	(0.058)
	<b>Social</b>	-5.241***	(0.000)

904 P-value is in parenthesis. \*,\*\*,\*\*\* denote the statistical significance at 10%, 5%, 1% level.

905  
 906  
 907  
 908

909 **Table 10 Panel unit root tests for low-to-middle-income countries.**

		CADF	
		Level	
<b>Prod</b>	<b>Edu</b>	-2.906***	(0.002)
	<b>Health</b>	-3.151***	(0.001)
	<b>Defence</b>	-2.186**	(0.036)
	<b>Housing</b>	-4.168***	(0.000)
	<b>Economic affairs</b>	-7.109***	(0.000)
	<b>General</b>	-4.222***	(0.000)
<b>Nonprod</b>	<b>Order</b>	-1.721**	(0.043)
	<b>Recreation</b>	-4.859***	(0.000)
	<b>Social</b>	-3.908***	(0.000)

910 P-value is in parenthesis. \*,\*\*,\*\*\* denote the statistical significance at 10%, 5%, 1% level.

911 **4.3.2 Results discussion for panel Driscoll-Kraay, FGLS and GMM.**

912 **a. The linear approach**

913 We estimate the linear relationship among variables using the pooled standard errors Driscoll-Kraay estimator  
 914 (Table 11). These Driscoll-Kraay results (Table 11) are confirmed by the FGLS results (See Appendix Table A7)  
 915 and the GMM results (See Appendix Table A8). In these tables, we show that:

- 916 • Public spending on education has a positive effect on economic growth in our panel of country case but its  
 917 effect is not significant in the case of low and middle-income countries.

918 This result is consistent with those of Bose, Haque, et Osborn (2007), Gemmell, Kneller et Sanz (2015), Mallick,  
 919 Pradeep et Pradhan (2016), Lupu et al. (2018). The effect of public spending on education is positive because, firstly,  
 920 as an investment in human capital it may produce skilled workers with greater productivity which contributes to  
 921 economic growth. Besides, a better-educated labor force increases the return on research and development and  
 922 ensures that discoveries are more readily absorbed in the productive structure of the economy. So, more education  
 923 equals more economic growth. This investment in human capital, also allows for greater innovation and  
 924 specialization in higher value-added activities, which have a positive effect on growth. The significance of this  
 925 effect in the specific case of high-income countries may be explained by the bidirectional relationship between these  
 926 variables (Al-Yousif, 2008). Thus, if the idea about the fact that those countries with a greater level of development  
 927 spend more on education, the positive and the bidirectional causality of the relationship between these variables may  
 928 be one of the reasons for these countries' level of development.

929 This significance can also be due to the level of governance (institutional setting) in these different countries. In  
 930 effect, according to the 2007 Organization for Economic Cooperation and Development report (OECD, 2007),

931 institutional settings influence the efficiency of education. Additionally, Wilson (2005) shows that this spending  
932 inefficiency in low and middle-income countries' is due to managerial ineptitudes or to other constraints outside  
933 authorities direct control (socio-economic background on education attainment).

934 • The effect of public spending on health on economic growth is negative and significant in high-income  
935 countries.

936 In the specific case of high-income countries, this negative effect might be due to the healthcare allocation (mainly  
937 private in these countries). In effect, in these countries, governments use private providers (clinics) for health  
938 services (including insurance). But, the charge of these services despite the State action is too heavy, so population  
939 (essentially poor people) cannot afford the cares they need, influencing their productivity, hence economic growth.

940 Besides, privatizing existing public services increases inequalities in the distribution of services, as private  
941 companies seek those with the highest incomes rather than the greatest needs. So it is hard for needy peoples to get  
942 the care they need which impacts their well-being. As spending on health impacts human and physical capital  
943 accumulation, this situation affects these people productivity, hence economic growth. The negative sign of this  
944 spending could also mean that the way of spending money is inefficient because this spending is used for  
945 unproductive projects, or the country's institutional capacity is weak, so it cannot check the efficiency of this  
946 spending.

947 • The effect of public spending on economic affairs on growth is negative and significant in low and middle-  
948 income countries.

949 This result is consistent with the conclusion of Lupu et al. (2018), showing the negative relationship between this  
950 spending and economic growth.

951 This negative relationship may be due to the non-efficiency of this spending. In effect, to contribute to economic  
952 growth, this spending has to be efficient but this efficiency is affected by factors such as the density of networks,  
953 capital costs, public objectives, infrastructure maintenance, and quality of infrastructures. In effect, if these  
954 infrastructures' quality is bad, it can increase the level of spending for its maintenance; hence generating more loss  
955 than benefits, and reducing economic growth. This negative relationship may also be due to the negative return of  
956 this investment, the loss of efficiency gains, productivity and innovation. In effect, due to competition with private  
957 sector, and the bad quality of their services, some sectors such as communication, mobile, internet are not efficient,  
958 as private services are preferred to public.

959 Additionally, the structural adjustment policies imposed by the IMF in these countries (African, Latin American,  
960 and East Asian countries) led to the fall of these investments (road, water, sanitation, and housing) which became  
961 less efficient, which is led to a fall in economic growth.

962 • The effect of public spending on general public services on economic growth is positive and significant in  
963 the case of our panel of countries.

964 The positive effect of this spending may be due to the fact that this spending supports employment through direct  
965 employment of public services workers, indirect employment of workers by contractors, extra jobs from the  
966 spending of the wages of public workers and of recipients of social security benefits (multiplier effect).

967 Besides, as this spending about executive and legislative organs, and financial and fiscal affairs, it contributes to the  
968 well-functioning of administration (through the improvement of equality in the employment sector), which become  
969 efficient and productive. It facilitates the relationship between government organs, hence improve regulatory quality.  
970 By paying attention to external affairs, and foreign economic aid, it also may contribute to the well-functioning of  
971 international trade and transactions between countries (loans, grants, aid);

972 • The effect of public spending on public order and safety on economic growth is positive in high-income  
973 countries while it is negative in low and middle-income countries.

974 The positive sign in the case of high-income countries and the negative sign for low and middle-income countries  
975 may be due to the amount of this spending in these different economies. In effect, the different results (See  
976 Appendix Table A9) show that the level of public spending on order and safety on high-income countries is lower  
977 than those on low and middle income countries. Also, as noted by Devarajan et al. (1996), public spending, if  
978 applied excessively can be unproductive.

979 The positive effect of public spending on public order and safety can be explained by the fact that this spending  
980 contributes to a well-functioning legal system, through institution of enforcing law, order and public safety, which is  
981 a condition for a good economic environment, hence a positive growth. Besides, as this spending is mainly a  
982 responsibility of governments, it is a public instrument to contribute to growth by increasing the marginal  
983 productivity of public and private supplied production factors, and also by contributing to better use of existing  
984 capital and labor assets.

985 • The effect of public spending on social protection on economic growth is negative and significant in the  
986 case of low and middle-income countries.

987 This result is consistent with those of Adam et Bevan (2005), and Lupu et al. (2018). This negative relationship may  
988 be due to the fact that this spending generates disincentives to work for potential recipients and /or stimulate socially  
989 unproductive rent-seeking. In effect, one example is unemployment benefits which can negatively influence people  
990 incentive to work, hence reducing productivity and growth.

991 Besides, by inducing early retirement, this spending reduces economic productivity, hence growth. In effect,  
992 considering this spending, people choose an earlier retirement age, which means they leave the labor force when the  
993 extra income they could produce is greater than the value they place on the extra leisure. That leaves society with  
994 less output because individuals face a distorted trade-off between labor and leisure.

995

Dependent variable: per capita growth				
	High-income countries (323 observations)		Low-to-middle income countries (543 observations)	
	(1)	(2)	(1)	(2)
<b>DGDP/k</b>	0.859*** (0.000)	0.848*** (0.000)	0.886*** (0.000)	0.879*** (0.000)
<b>Edu</b>	0.301** (0.010)		-0.090 (0.341)	
<b>Health</b>	-0.145** (0.034)		-0.136 (0.140)	
<b>Defence</b>	-0.134 (0.719)		0.020 (0.585)	
<b>Housing</b>	0.170 (0.125)		0.126 (0.218)	
<b>Affairs</b>	-0.111 (0.207)		-0.113** (0.025)	
<b>General</b>	0.021* (0.067)		0.027** (0.041)	
<b>Order</b>		0.429** (0.034)		-0.057* (0.023)
<b>Recreation</b>		0.226 (0.115)		0.112 (0.617)
<b>Social</b>		-0.034 (0.218)		-0.099*** (0.002)
<b>Env</b>	0.036 (0.850)	-0.242 (0.326)	0.962*** (0.000)	0.936*** (0.000)
<b>GFCF</b>	0.055 (0.725)	0.005 (0.651)	0.018 (0.290)	0.012 (0.474)
<b>Inf</b>	-0.025 (0.325)	-0.009 (0.728)	-0.0004** (0.028)	-0.001*** (0.027)
<b>Stab</b>	-0.001 (0.996)	-0.167 (0.531)	0.223 (0.391)	0.207 (0.379)
<b>Corr</b>	0.189** (0.044)	0.121* (0.058)	0.623* (0.058)	0.625* (0.070)
<b>Def/Sur</b>	0.002 (0.211)	0.001 (0.570)	0.0005 (0.732)	0.002 (0.137)

<b>Tax</b>	0.004 (0.295)	0.003 (0.324)	-0.022* (0.051)	-0.034*** (0.005)
<b>Nontax</b>	-0.004 (0.751)	-0.003 (0.752)	0.085* (0.027)	0.135* (0.013)
<b>Crisis</b>	-0.305*** (0.010)	-0.387** (0.033)	-0.306 (0.140)	-0.294 (0.170)
<b>No. of countries</b>	13	13	22	22

997 P-value is in parenthesis \*, \*\*, \*\*\* denote the statistical significance at 10%, 5%, 1% level.

## 998 **b. The nonlinear approach**

999 To examine the nonlinear relationship between public spending and economic growth, we estimate our  
1000 econometrical models following the concept of the Arme y (1995) curve. According to this author, the effect of  
1001 government expenditure on economic growth depends of the level of this spending. For him, the size of the  
1002 government and economic growth can be modeled as a quadratic function (inverted U-shaped), which assumes a  
1003 role for both the linear term and the squared term of government expenditure in the economic growth process. The  
1004 upward-sloping portion of the curve demonstrates the productive effect of small government, while the downward-  
1005 sloping portion of the curve exhibits those unproductive consequences of large government. The highest point  
1006 illustrates the point where the marginal benefits from increased government spending reach zero.

1007 The approach used in this study relates the significant public spending to economic growth. We add in the  
1008 econometrical model the square of the significant public spending. The inclusion of this variable contributes to  
1009 empirically verify the phenomenon of Arme y curve within this framework.

$$1010 \quad y_t - y_{t-1} = \beta_0 + \beta_1 g_t - \beta_2 g_t^2 + \dots + \varepsilon_t \quad (28)$$

1011 The positive coefficient of the linear  $g$  term is related to the constructive effects of government spending on output,  
1012 and the expecting negative effects of increased government size. This regression equation includes both the linear  
1013 and the squared term of public spending  $g$  in the estimated equation, and therefore it is a quadratic function or, in  
1014 other words, a second degree polynomial function. Applying the linear and quadratic function of public spending,  
1015 we assume that the relationship between government spending and growth is uncomplicated and the curve depicting  
1016 this relationship has no more than one maximum.

1017 The graphical solution of the optimal amount of government spending is the peak of the quadratic curve.  
1018 Alternatively, the mechanism specified below can be used to calculate the optimal level of government spending  
1019 using partial differentiation.

$$1020 \quad y_t - y_{t-1} = \beta_0 + \beta_1 g_t - \beta_2 g_t^2 \quad (29)$$

1021 
$$\frac{\partial(y_t - y_{t-1})}{\partial(g_t)} = \beta_1 - 2(\beta_2)g_t \quad (30)$$

1022 
$$0 = \beta_1 - 2(\beta_2)g_t \quad (31)$$

1023 
$$g_t^* = \frac{\beta_1}{2\beta_2} \quad (32)$$

1024 As the results show a positive relationship between public spending on education and economic growth in high-  
1025 income countries, a positive relationship between public spending on general public services and economic growth  
1026 in high-income countries and low and middle-income countries; a negative relationship between public spending on  
1027 health and economic growth in high-income countries, a negative relationship between public spending on economic  
1028 affairs and economic growth in low and middle-income countries, and a negative relationship between public  
1029 spending on social protection and economic growth in low and middle-income countries, we attempts in this part to  
1030 check the existence of linear or nonlinear relationship between these variables and green economic growth.

1031 The results in Table 12 showed a nonlinear and significant relationship between public spending on education, and  
1032 public spending on order and safety and economic growth in the case of high-income countries. The results also  
1033 show a nonlinear relationship between public spending on economic affairs and economic growth in the case of low  
1034 and middle income countries.

1035

1036

1037

1038

1039

1040

1041

1042

1043

1044

1045

1046 **Table 12** Driscoll-Kraay results for public spending on education, order, and affairs

1047 **Dependent variable: GDP/k**

1048

<b>Dependent variable: per capita growth</b>				
	<b>High-income countries (323 observations)</b>		<b>Low and middle income countries (543 observations)</b>	
	(1)	(2)	(1)	(2)
<b>DGDP/k</b>	0.831*** (0.000)	0.841*** (0.000)	0.888*** (0.000)	0.879*** (0.000)
<b>Edu</b>	0.718** (0.013)		-0.069 (0.127)	
<b>EduSq</b>	-0.049** (0.030)			
<b>Health</b>	-0.181** (0.024)		-0.102 (0.227)	
<b>HealthSq</b>				
<b>Defence</b>	-0.179** (0.025)		0.014 (0.655)	
<b>Housing</b>	0.043 (0.711)		0.168 (0.137)	
<b>Affairs</b>	-0.088 (0.227)		-0.251** (0.026)	
<b>AffairSq</b>			0.011** (0.012)	
<b>General</b>	0.013 (0.660)		0.033 (0.341)	
<b>Order</b>		0.949** (0.025)		-0.061 (0.535)
<b>OrderSq</b>		-0.171** (0.019)		0.0003 (0.961)
<b>Recreation</b>		0.202 (0.184)		0.115 (0.607)
<b>Social</b>		-0.045 (0.114)		-0.099 (0.003)
<b>Env</b>	-0.105	-0.160	1.061***	0.940



	(0.604)	(0.572)	(0.000)	(0.001)
<b>GFCF</b>	0.002	0.001	0.019	0.012
	(0.885)	(0.896)	(0.268)	(0.473)
<b>Inf</b>	-0.028	-0.010	-0.001	-0.001
	(0.232)	(0.684)	(0.284)	(0.271)
<b>Stab</b>	-0.183	-0.148	0.202	0.206
	(0.319)	(0.088)	(0.439)	(0.386)
<b>Corr</b>	-0.099	-0.185	-0.603*	-0.624*
	(0.641)	(0.076)	(0.065)	(0.076)
<b>Def/Sur</b>	0.003	0.001	0.001	0.002
	(0.141)	(0.516)	(0.752)	(0.136)
<b>Tax</b>	0.005	0.003	-0.022	-0.034***
	(0.146)	(0.356)	(0.051)	(0.004)
<b>Nontax</b>	-0.008	-0.001	0.077	0.134
	(0.427)	(0.891)	(0.335)	(0.130)
<b>Crisis</b>	-0.267	-0.385	-0.337	-0.293
	(0.137)	(0.032)	(0.095)	(0.189)
<b>No. of countries</b>	13	13	22	22

1049 P-value is in parenthesis. \*,\*\*,\*\*\* denote the statistical significance at 10%, 5%, 1% level.

1050

1051 In Table 13, the results show the existence of a nonlinear and significant relationship between public spending on  
1052 health and economic growth in the case of high-income countries. There is also a nonlinear and significant  
1053 relationship between public spending on general affairs and economic growth in the case of low and middle-income  
1054 countries. To end, the results show the existence of a nonlinear and significant relationship between public spending  
1055 on social protection and economic growth in the case of low and middle-income countries.

1056

1057

1058

1059

1060

1061

1062 **Table 13 Driscoll-Kraay results for public spending on health, general and social**

1063 **Dependent variable: GDP/k**

1064

<b>Dependent variable: per capita growth</b>			
	<b>High-income countries</b>	<b>Low and middle income countries</b>	
	<b>(323 observations)</b>	<b>(543 observations)</b>	
	(1)	(1)	(2)
<b>DGDP/k</b>	0.853*** (0.000)	0.885*** (0.000)	0.881*** (0.000)
<b>Edu</b>	0.272** (0.016)	-0.083** (0.048)	
<b>Health</b>	-0.068* (0.058)	-0.108 ( 0.252)	
<b>HealthSq</b>	0.022* (0.053)		
<b>Defence</b>	-0.111* (0.055)	0.022 (0.548)	
<b>Housing</b>	0.158 (0.150)	0.124 (0.220)	
<b>Affairs</b>	-0.118 (0.176)	-0.106** (0.030)	
<b>General</b>	0.015 (0.593)	0.042** (0.050)	
<b>GeneralSq</b>		-0.005* (0.090)	
<b>Order</b>			-0.053 (0.264)
<b>Recreation</b>			0.343 (0.249)
<b>Social</b>			-0.205** (0.030)
<b>SocialSq</b>			0.006** (0.017)
<b>Env</b>	-0.131 (0.492)	0.975*** (0.000)	1.047*** (0.000)
<b>GFCF</b>	0.002	0.018	0.014

	(0.866)	(0.291)	(0.394)
<b>Inf</b>	-0.023	-0.001	-0.001
	(0.340)	(0.277)	(0.264)
<b>Stab</b>	0.015	0.222	0.221
	(0.930)	(0.398)	(0.380)
<b>Corr</b>	-0.150	-0.614	-0.640
	(0.501)	(0.061)	(0.069)
<b>Def/Sur</b>	0.002	0.001	0.001
	(0.167)	(0.642)	(0.649)
<b>Tax</b>	0.004	-0.026**	-0.035***
	(0.249)	(0.016)	(0.004)
<b>Nontax</b>	-0.004	0.109	0.141
	(0.728)	(0.183)	(0.119)
<b>Crisis</b>	-0.286	-0.295	-0.324
	(0.129)	(0.163)	(0.123)
<b>No. of countries</b>	13	22	22

1065 P-value is in parenthesis. \*,\*\*,\*\*\* denote the statistical significance at 10%, 5%, 1% level.

1066

1067 In Table 14, the results show the existence of a nonlinear and significant relationship between public spending on  
1068 general affairs and economic growth in the case of high-income countries.

1069

1070

1071

1072

1073

1074

1075

1076

1077

1078 **Table 14 Driscoll-Kraay results for public spending on general**

1079 **Dependent variable: GDP/k**

<b>Dependent variable: per capita growth</b>				
	<b>High-income countries (323 observations)</b>		<b>Low and middle income countries (543 observations)</b>	
	(1)	(2)	(1)	(2)
<b>DGDP/k</b>	0.857 (0.000)		0.887*** (0.000)	
<b>Edu</b>	0.306 (0.008)		-0.064 (0.106)	
<b>Health</b>	-0.180 (0.010)		-0.121 (0.178)	
<b>Defence</b>	-0.128 (0.044)		0.019 (0.593)	
<b>Housing</b>	0.144 (0.207)		0.184 (0.154)	
<b>Affairs</b>	-0.111 (0.207)		-0.104** (0.049)	
<b>General</b>	0.104** (0.039)		0.019 (0.506)	
<b>GeneralSq</b>	-0.004** (0.042)			
<b>Order</b>				
<b>OrderSq</b>				
<b>Recreation</b>				
<b>Social</b>				
<b>Env</b>	-0.127 (0.618)		0.789 (0.619)	
<b>EnvSq</b>			-1.878 (0.261)	
<b>GFCF</b>	0.006 (0.680)		0.019 (0.271)	

<b>Inf</b>	-0.032 (0.298)	-0.001 (0.285)
<b>Stab</b>	-0.056 (0.740)	0.150 (0.495)
<b>Corr</b>	-0.141 (0.555)	-0.502* (0.080)
<b>Def/Sur</b>	0.002 (0.203)	0.001 (0.617)
<b>Tax</b>	0.004 (0.253)	-0.021* (0.070)
<b>Nontax</b>	-0.004 (0.746)	0.079 (0.311)
<b>Crisis</b>	-0.291 (0.120)	-0.308 (0.134)
<b>No. of countries</b>	13	22

1080 P-value is in parenthesis. \*,\*\*,\*\*\* denote the statistical significance at 10%, 5%, 1% level.

1081

1082 Based on equation (32), the maximal amount of public spending is as following (Table 15):

1083 **Table 15 Maximum spending**

Variables		Maxima for High-income countries	Maxima for Low and middle income countries
Productive	Education	7.327	
	Health	1.545	
	General	13	4.2
	Affairs		11.409
Nonproductive	Order	2.775	
	Social		17.083

1084

1085 The results in Table 15 suggest that in the case of high-income countries:

- 1086
- 1087
- 1088
- The curve peaks when public spending on education is approximately equal to 7.327% of total government expenditure; and when public spending on health is approximately equal to 1.545% of total government expenditure;

1089 • The curve also peaks when public spending on general public services is approximately equal to 13% of  
1090 total government expenditure; and when public spending on order and safety is approximately equal to  
1091 2.775 of total government expenditure.

1092 The results in Table 15 also suggest that in the case of low and middle-income countries:

1093 • The curve peaks when public spending on general public services is approximately equal to 4.2% of total  
1094 government expenditure; when public spending on economic affairs is approximately equal to 11.409 % of  
1095 total government expenditure; and when public spending on social protection is approximately equal to  
1096 17.083% of total government expenditure.

1097 The results of the nonlinear relationship approach show that government policymakers have to pay attention to the  
1098 level of public expenditure when they implement their policies, because after a certain level the effect of this  
1099 spending on economic growth can be negative.

1100 This nonlinear relationship suggests that the amount of public spending can/cannot exceed a certain level; otherwise  
1101 this spending will contribute/reduce green economic growth.

1102 This study considered the linear and nonlinear relationship instead of the other studies that only pay attention to the  
1103 linear relationship.

## 1104 **5. Conclusion, Policy implications and future work**

### 1105 **5.1 Conclusion**

1106 Public spending as an instrument of public policy is essential for the management of economic growth. In effect,  
1107 considering that it is one of the main tools for government action, the analysis of its nature and contribution is  
1108 important. In so doing, we attempted in our analysis to shed light on the relationship between public spending and  
1109 economic growth by using an endogenous growth model developed by Devarajan et al. (1996).

1110 To reach our objective, we use four estimation methods: the fixed-effect approach, the Driscoll and Kraay pooled  
1111 OLS standards errors, the feasible generalized least squares and the difference generalized method of moments with  
1112 orthogonal deviations. We used these different approaches to contribute to the empirical analysis of this relationship  
1113 by taking account of cross-dependence among variables and endogeneity.

1114 Our main findings showed that there is productive and nonproductive public spending. Productive spending has a  
1115 positive effect on economic growth while nonproductive spending has a negative effect on economic growth. This  
1116 result is consistent with those of Bleaney et al. (2001) and Chu et al. (2020). We also found that 2008 financial crisis  
1117 has a negative effect on economic growth in high-income countries, while its effect is not significant in the case of  
1118 low and middle-income countries.

1119 Besides, after dividing productive and nonproductive spending into their components, we found that these  
1120 components affect growth differently, according to the level of income and the level of spending. In other words,  
1121 there is a linear and nonlinear relationship between disaggregated public spending and economic growth while  
1122 considering low, middle and high-income countries.

1123 So, in the case of high-income countries, public spending on education, public spending on general public services  
1124 and public spending on public order and safety have a positive effect on economic growth, while public spending on  
1125 health, and public spending on social protection have a negative effect on economic growth. In the case of low and  
1126 middle-income countries, public spending on general public services has a positive effect on economic growth,  
1127 while public spending on economic affairs has a negative effect on economic growth.

1128 But, considering the existence of a nonlinear relationship between these spending and economic growth, these  
1129 countries policymakers have to pay attention to the amount of the spending they implement while setting their  
1130 policies.

1131 Our analysis results also show that public spending on environmental protection has a positive and significant effect  
1132 on low and middle-income countries' economic growth. Also, the inflation rate has a negative relationship with  
1133 economic growth in low and middle-income countries while, control of corruption has a positive effect on growth in  
1134 our panel of countries' case. Finally, the effect of tax and nontax is significant in the case of low and middle-income  
1135 countries. But, while the effect of tax on economic growth is negative, the effect of nontax is positive.

## 1136 **5.2 Policy implications**

1137 Following authors like Barro (1990) and Devarajan et al. (1996), this study highlights the existence of a relationship  
1138 between public spending and economic growth. Knowing the importance and the sensitivity of growth issues at the  
1139 world level, this approach examines the effect of the different components of public spending on growth. We  
1140 globally show that the effect, either positive or negative, of public spending on economic growth depends on the  
1141 nature of the spending, on the level of the spending, and on the country level of development. Several policy  
1142 suggestions can be given based on the results:

1143 In high-income countries, public authorities have to pay attention to the level of public spending on health and social  
1144 protection because under a certain level, these spending negatively impact economic growth. They also have to  
1145 improve public spending on education, public spending on general public services, and public spending in order and  
1146 safety, while being careful to the amount of this spending they use in the economy.

1147 In performing these different policies, high-income economies also have to pay attention to corruption. In effect, an  
1148 increase in the control of corruption in these countries leads to an increase of economic growth.

1149 In low and middle-income countries, the governments have to implement policies to improve spending on general  
1150 public services, while considering the amount of this spending they use. These governments' policy makers have  
1151 also to pay attention to their spending on economic affairs, public order and safety, and social protection. These

1152 countries also have to increase public spending on environmental protection and the control of corruption, manage  
1153 the level of inflation and implement policies to reduce tax and improve nontax.

1154 To set up efficiently these different policies, public authorities have to implement strong and high-quality  
1155 institutions through the increase of the law force, the respect of the property rights, a better organization of public  
1156 activities, a good allocation of public and private resources, a good interaction between government, public agents  
1157 and firms, the implementation of rules and stability necessary for firms' investment and business planning.

1158 High quality of institutions also means fighting against corruption by implementing policies to reduce the level of  
1159 poverty, increase public employees' wages, and speed up the bureaucratic process. In effect, a high poverty level,  
1160 low wages in the public sector and the slowness of bureaucratic process can easily drive bribery. Additionally, in the  
1161 specific case of low and middle-income countries, governments might reduce their intervention in economic activity  
1162 through policies aiming at liberalization, stabilization, deregulation and privatization. In effect, high levels of State  
1163 intervention (protectionism, state-owned enterprises, price controls, exchange controls, import licenses) can create  
1164 opportunities for bribery.

1165 Decision-makers also have to consider spending which contributes to the growth and increases investment in these  
1166 different sectors. As education and health are the main determinants of human capital productivity, public authorities  
1167 have to orientate redistributive programs towards health and education, to improve the quality of the labor force.  
1168 Besides, decision-makers have to examine health spending carefully and develop policies to improve public  
1169 healthcare (to reduce the role of the private sector), nutrition, better sanitation, innovations in medical technologies,  
1170 and public health infrastructure.

1171 About the environment sector, the development of environmental-friendly policies such as the implementation of  
1172 energy (from hydroelectric barrage), renewable energy (wind turbines, solar photovoltaic facilities) in the region  
1173 specialized on the use of charcoal or atomic energy at the domestic and industrial level, will also contribute to  
1174 growth via green energy.

1175 Concerning the taxation effect on growth, a solution to manage its negative effect on growth is to well-designed tax  
1176 policies. For example, reducing marginal tax rates on wages and salaries can induce people to work more, lower  
1177 marginal tax rates on the returns to asset (such as interest, dividends and capital gains) can encourage saving,  
1178 reducing marginal tax rates on business income can cause some companies to invest domestically rather than abroad,  
1179 tax breaks for research can encourage the creation of new ideas that spill over to help the broader economy.  
1180 Countries can also pay attention to tax on consumption which may contribute to growth, considering that this tax  
1181 minimizes taxation distorting effects on the growth factors such as labor, capital, and technological progress. To end,  
1182 as public spending is influenced by the level of income, governments have also to implement policies to improve  
1183 their countries' level of income.



1184 So, this paper is an important contribution to policy decision making because, by analyzing this relationship, it  
1185 permits, firstly, to maintain and manage national economic conditions; secondly, to ensure through the necessary  
1186 fiscal reforms or instruments that the system performs its redistributive function effectively.

### 1187 **5.3 Future research**

1188 The current research has several avenues to extend. One possible extension would be to analyze this relationship by  
1189 region, to take into account regional characteristics, affecting public spending composition and other determinants of  
1190 growth. Another one would be to include variables such as the level of pollution and consider the influence of this  
1191 variable on public spending.

1192

1193

1194

1195

1196

1197

1198

1199

1200

1201

1202

1203

1204

1205

1206

1207

1208

1209

1210 **Appendix**1211 **Table A1: High income countries panel unit root tests.**

	<b>LLC</b>		<b>IPS</b>		<b>ADF-Fisher</b>	
	<b>Level</b>		<b>Level</b>		<b>Level</b>	
<b>GDP/k</b>	-2.929***	(0.002)	-3.120***	(0.001)	48.540***	(0.005)
<b>DGDP/k</b>	-2.828***	(0.002)	-2.898***	(0.002)	46.067***	(0.009)
<b>Prod</b>	-3.919***	(0.000)	-2.570***	(0.005)	56.101***	(0.001)
<b>Nonprod</b>	-4.217***	(0.000)	-3.603***	(0.000)	58.351***	(0.000)
<b>Env</b>	-4.038***	(0.000)	-3.645***	(0.000)	59.168***	(0.000)
<b>GFCF</b>	-5.746***	(0.000)	-5.273***	(0.000)	96.048***	(0.000)
<b>Inf</b>	-4.988***	(0.000)	-3.738***	(0.000)	56.595***	(0.001)
<b>Stab</b>	-2.152**	(0.016)	-1.649**	(0.049)	47.334***	(0.006)
<b>Corr</b>	-1.349*	(0.089)	-2.668***	(0.008)	48.381***	(0.004)
<b>Def/Sur</b>	-2.590***	(0.005)	-3.344***	(0.000)	53.357***	(0.001)
<b>Tax</b>	-2.380***	(0.009)	-2.177**	(0.015)	44.849**	(0.012)
<b>Nontax</b>	-1.419*	(0.078)	-1.864**	(0.031)	46.033**	(0.010)

1212 P-value is in parenthesis. \*,\*\*,\*\*\* denote the statistical significance at 10%, 5%, 1% level.

1213

1214

1215

1216

1217

1218

1219 **Table A2: Low and middle-income countries panel unit root tests.**

	<b>LLC</b>		<b>IPS</b>		<b>ADF-Fisher</b>	
	<b>Level</b>		<b>Level</b>		<b>Level</b>	
<b>GDP/k</b>	-3.929***	(0.000)	-2.593**	(0.005)	70.909**	(0.006)
<b>DGDP/k</b>	-4.854***	(0.000)	-3.191***	(0.001)	78.345***	(0.001)
<b>Prod</b>	-4.922***	(0.000)	-3.046***	(0.001)	74.886***	(0.003)
<b>Nonprod</b>	-5.277***	(0.000)	-3.700***	(0.000)	75.563**	(0.002)
<b>Env</b>	-3.542***	(0.000)	-4.394***	(0.000)	100.489***	(0.000)
<b>GFCF</b>	-4.544***	(0.000)	-2.937***	(0.002)	78.338***	(0.001)
<b>Inf</b>	-5.866***	(0.000)	-4.226***	(0.000)	106.862***	(0.000)
<b>Stab</b>	-2.789***	(0.003)	-2.265**	(0.012)	65.208**	(0.021)
<b>Corr</b>	-2.144**	(0.016)	-2.586**	(0.027)	59.719***	(0.007)
<b>Def/Sur</b>	-3.088***	(0.001)	-3.714***	(0.000)	90.711***	(0.000)
<b>Tax</b>	-4.088***	(0.000)	-1.765**	(0.039)	56.412***	(0.009)
<b>Nontax</b>	-1.511*	(0.065)	-2.768***	(0.003)	86.495***	(0.000)

1220 P-value is in parenthesis. \*, \*\*, \*\*\* denote the statistical significance at 10%, 5%, 1% level

1221

1222

1223

1224

1225

1226

1227

1228

1229 **Table A3: High-income countries VIF test for productive spending**

1230

<b>Variable</b>	<b>VIF</b>	<b>1/VIF</b>
<b>Tax</b>	4.45	0.225
<b>Nontax</b>	3.47	0.288
<b>Prod</b>	2.54	0.394
<b>Def/Sur</b>	2.28	0.438
<b>GFCF</b>	1.96	0.511
<b>Corr</b>	1.75	0.570
<b>DGDP/k</b>	1.41	0.709
<b>Stab</b>	1.37	0.730
<b>Inf</b>	1.33	0.754
<b>Env</b>	1.26	0.793
<b>Crisis</b>	1.03	0.975
<b>Mean VIF</b>	2.08	

1231

1232

1233

1234

1235

1236

1237

1238

1239

1240

1241

1242

1243

1244

1245

1246 **Table A4: High-income countries VIF test for non-productive spending**

1247

<b>Variable</b>	<b>VIF</b>	<b>1/VIF</b>
<b>Tax</b>	4.28	0.234
<b>Nontax</b>	3.39	0.295
<b>Nonprod</b>	2.42	0.413
<b>Def/Sur</b>	2.29	0.438
<b>Env</b>	2.09	0.479
<b>GFCF</b>	1.62	0.618
<b>Corr</b>	1.44	0.694
<b>Stab</b>	1.37	0.730
<b>DGDP/k</b>	1.35	0.743
<b>Inf</b>	1.29	0.774
<b>Crisis</b>	1.02	0.976
<b>Mean VIF</b>	2.05	

1248

1249

1250

1251

1252

1253

1254

1255

1256

1257

1258

1259

1260

1261

1262

1263

1264

1265

1266

1267

1268

1269 **Table A5: Low to middle-income countries VIF test for productive spending**

1270

<b>Variable</b>	<b>VIF</b>	<b>1/VIF</b>
<b>Corr</b>	2.13	0.470
<b>Env</b>	2.02	0.494
<b>Tax</b>	1.93	0.519
<b>Nontax</b>	1.89	0.530
<b>Prod</b>	1.87	0.534
<b>Stab</b>	1.84	0.544
<b>DGDP/k</b>	1.43	0.699
<b>GFCF</b>	1.35	0.740
<b>Inf</b>	1.12	0.890
<b>Def/Sur</b>	1.05	0.953
<b>Crisis</b>	1.02	0.978
<b>Mean VIF</b>	1.60	

1271

1272

1273 **Table A6: Low to middle-income countries VIF test for non-productive spending**

1274

<b>Variable</b>	<b>VIF</b>	<b>1/VIF</b>
<b>Corr</b>	2.22	0.450
<b>Env</b>	2.12	0.471
<b>Tax</b>	1.98	0.505
<b>Nonprod</b>	1.93	0.517
<b>Nontax</b>	1.93	0.519
<b>Stab</b>	1.83	0.546
<b>DGDP/k</b>	1.43	0.699
<b>GFCF</b>	1.35	0.742
<b>Inf</b>	1.12	0.892
<b>Def/Sur</b>	1.06	0.947
<b>Crisis</b>	1.02	0.979
<b>Mean VIF</b>	1.64	

1275

1276

1277

1278

1279

1280 Table A7 Panel FGLS results

Dependent variable: per capita growth				
	High-income countries (323 observations)		Low-to-middle income countries (543 observations)	
	(1)	(2)	(1)	(2)
<b>DGDP/k</b>	0.859*** (0.000)	0.848*** (0.000)	0.886*** (0.000)	0.879*** (0.000)
<b>Edu</b>	0.301*** (0.005)		-0.090 (0.233)	
<b>Health</b>	-0.145** (0.048)		-0.139 (0.116)	
<b>Defence</b>	-0.104 (0.244)		0.020 (0.452)	
<b>Housing</b>	0.170 (0.297)		0.126 (0.374)	
<b>Affairs</b>	-0.111 (0.164)		-0.113*** (0.006)	
<b>General</b>	0.021* (0.035)		0.027** (0.035)	
<b>Order</b>		0.429*** (0.000)		-0.057* (0.014)
<b>Recreation</b>		0.226 (0.153)		0.112 (0.713)
<b>Social</b>		-0.034 (0.65)		-0.099*** (0.000)
<b>Env</b>	0.036 (0.894)	-0.242 (0.434)	0.962*** (0.010)	0.936*** (0.009)
<b>GFCF</b>	0.005 (0.695)	0.005 (0.656)	0.018 (0.760)	0.012 (0.233)
<b>Inf</b>	-0.025 (0.192)	-0.009 (0.633)	-0.001*** (0.002)	-0.001*** (0.002)
<b>Stab</b>	-0.001 (0.997)	-0.167 (0.281)	0.223 (0.143)	0.207 (0.170)
<b>Corr</b>	0.189** (0.032)	0.121** (0.032)	0.623*** (0.004)	0.625*** (0.004)
<b>Def/Sur</b>	0.002 (0.523)	0.001 (0.742)	0.001 (0.768)	0.002 (0.289)

<b>Tax</b>	0.004 (0.295)	0.003 (0.337)	-0.022* (0.074)	-0.034*** (0.006)
<b>Nontax</b>	-0.004 (0.746)	-0.003 (0.777)	0.085** (0.025)	0.135* (0.072)
<b>Crisis</b>	-0.305** (0.039)	-0.387** (0.027)	-0.306 (0.347)	-0.294 (0.367)
<b>No. of countries</b>	13	13	22	22

1281 P-value is in parenthesis. \*,\*\*,\*\*\* denote the statistical significance at 10%, 5%, 1% level.

1282

1283 **Table A8 Panel GMM results**

<b>Dependent variable: per capita growth</b>				
	<b>High-income countries (323 observations)</b>		<b>Low-to-middle income countries (543 observations)</b>	
	<b>(1)</b>	<b>(2)</b>	<b>(1)</b>	<b>(2)</b>
<b>DGDP/k</b>	0.861*** (0.000)	0.848*** (0.000)	0.875*** (0.000)	0.870*** (0.000)
<b>Edu</b>	0.306** (0.021)		-0.089 (0.277)	
<b>Health</b>	-0.150*** (0.007)		-0.135 (0.187)	
<b>Defence</b>	-0.100 (0.320)		0.020 (0.456)	
<b>Housing</b>	0.170 (0.438)		0.126 (0.369)	
<b>Affairs</b>	-0.107 (0.370)		-0.115** (0.021)	
<b>General</b>	0.028** (0.034)		0.021** (0.031)	
<b>Order</b>		0.429* (0.046)		-0.056*** (0.019)
<b>Recreation</b>		0.226 (0.107)		0.106 (0.540)
<b>Social</b>		-0.034 (0.170)		-0.100*** (0.000)
<b>Env</b>	0.015 (0.938)	-0.242 (0.303)	1.020*** (0.004)	0.949*** (0.001)



<b>GFCF</b>	0.002 (0.944)	0.005 (0.774)	0.022 (0.313)	0.017 (0.406)
<b>Inf</b>	-0.024 (0.430)	-0.009 (0.725)	-0.001** (0.033)	-0.001** (0.035)
<b>Stab</b>	0.01 (0.969)	-0.167 (0.196)	0.193 (0.234)	0.196 (0.234)
<b>Corr</b>	0.179** (0.016)	0.121** (0.023)	0.619*** (0.006)	0.629*** (0.000)
<b>Def/Sur</b>	0.002 (0.121)	0.001 (0.338)	0.001 (0.589)	0.002 (0.250)
<b>Tax</b>	0.004 (0.248)	0.003 (0.309)	-0.023** (0.034)	-0.035*** (0.000)
<b>Nontax</b>	-0.004 (0.764)	-0.003 (0.814)	0.095** (0.025)	0.144*** (0.005)
<b>Crisis</b>	-0.305* (0.051)	-0.387** (0.039)	-0.304 (0.144)	-0.287 (0.147)
<b>No. of countries</b>	13	13	22	22
<b>AR(1)</b>	-2.41* (0.016)	-2.48* (0.013)	-2.75*** (0.006)	-2.74** (0.006)
<b>AR(2)</b>	-1.60 (0.110)	-1.63 (0.102)	-1.39 (0.164)	-1.36 (0.173)
<b>Hansen test</b>	0.01 (0.987)	0.01 (0.992)	2.86 (0.988)	9.22 (0.987)

1284 P-value is in parenthesis. \*,\*\*,\*\*\* denote the statistical significance at 10%, 5%, 1% level.

1285

1286

1287

1288

1289

1290

1291

1292

1293

1294

1295

1296

1297 **Table A9 Nonproductive spending descriptive statistics (in percentage of nonproductive spending)**

Variables	High income countries (323 observations)		Low and middle income countries (543 observations)	
	Mean	Standard deviation	Mean	Standard deviation
<b>Order</b>	17.731	8.416	20.850	21.303
<b>Recreation</b>	9.225	8.008	6.051	4.109
<b>Social</b>	73.044	57.981	73.099	49.609

1298

1299

1300

1301

1302

1303

1304

1305

1306

1307

1308

1309

1310

1311

1312

1313

1314

1315

1316

1317 **References**

- 1318 [1] Adam C, Bevan D (2005) Fiscal deficits and growth in developing countries. *J Public Econ* 89(4):571–597
- 1319 [2] Alesina, (1992). Alberto Alesina & Sule Ozler & Nouriel Roubini & Phillip Swagel, 1992. "Political  
1320 Instability and Economic Growth," NBER Working Papers 4173, National Bureau of Economic Research,  
1321 Inc.
- 1322 [3] Altunc, O., & Aydin, C. (2013). The Relationship between Optimal Size of Government and Economic  
1323 Growth: Empirical Evidence from Turkey, Romania and Bulgaria. *Procedia - Social and Behavioral  
1324 Sciences*, 92 . doi: 10.1016/j.sbspro.2013.08.639
- 1325 [4] Al-Yousif, Y. (2008). Education expenditure and economic growth: Some empirical evidence from the  
1326 GCC countries. *Journal of Developing Areas* 42 (1): 69-80.
- 1327 [5] Anderson, T.W., Hsiao, C., (1981). Estimation of dynamic models with error components. *J. Am. Stat.  
1328 Assoc.* 589–606.
- 1329 [6] Arellano M, Bond S (1991) Some tests of specification for panel data: Monte Carlo evidence and an  
1330 application to employment equations. *Rev Econ Stud* 58(2):277–297
- 1331 [7] Armev, R.K. (1995) *The Freedom Revolution*. Regnery Publishing.
- 1332 [8] Arsic, M., Nojkovic, A., Randjelovic, S., (2017). "Determinants of discretionary fiscal policy in Central  
1333 and Eastern Europe," *Economic Systems*, Elsevier, vol. 41(3), pages 367-378.
- 1334 [9] Barro, R.J., (1990). Government spending in a simple model of endogenous growth. *Journal of Political  
1335 Economy* 98 (1), 103–117.
- 1336 [10] Barro, R.J. & Martin, X. S.I. (1995). *Technology Diffusion, Convergence and Growth*. NBER working  
1337 Paper, No. 5151.
- 1338 [11] Bleaney M, Gemmell N, Kneller R (2001) Testing the endogenous growth model: public expenditure,  
1339 taxation, and growth over the long-run. *Can J Econ* 34(1):36–57
- 1340 [12] Blundell R, Bond S (1998) Initial conditions and moment restrictions in dynamic panel data models. *J  
1341 Econom* 87(1):115–143
- 1342 [13] Bose N, Haque M, Osborn D (2007) Public expenditure and economic growth: a disaggregated analysis for  
1343 developing countries. *Manch Sch* 75(5):533–556
- 1344 [14] Breusch T S and Pagan A (1980) The Lagrange Multiplier Test and its Applications to Model Specification  
1345 in *Econometrics*, *Review of Economic Studies*, 47, (1), 239-253
- 1346 [15] Choi, I. (2001). "Unit Root Tests for Panel Data," *Journal of International Money and Finance* 20: 249–272
- 1347 [16] Christie T (2012) The effect of government spending on economic growth: testing the non-linear  
1348 hypothesis. *Bull Econ Res* 66(2):183–204
- 1349 [17] Chu, T.T., Hölscher, J. & McCarthy, D. (2020). The impact of productive and non-productive government  
1350 expenditure on economic growth: an empirical analysis in high-income versus low- to middle-income  
1351 economies. *Empir Econ* 58, 2403–2430 <https://doi.org/10.1007/s00181-018-1616-3>.

- 1352 [18] Devarajan, S., Swaroop, V., and Zou, H. (1996). The composition of public expenditure and economic  
1353 growth. *Journal of Monetary Economics*, 37(2–3), 313–344.
- 1354 [19] Diamond, D., (1989), Reputation Acquisition in Debt Markets, *Journal of Political Economy*, 97, (4), 828-  
1355 62
- 1356 [20] Dormann, C. F. (2013). Colinearity: A review of methods to deal with it and a simulation study evaluating  
1357 their performance. *Ecography*, 36 (1), 27-46. <https://doi.org/10.1111/j.1600.05-87.2012.07348.x>.
- 1358 [21] Driscoll J C, Kraay A C (1998) Consistent covariance matrix estimation with spatially dependent panel  
1359 data. *Rev. Econ. Stat.* 80, 549–560, <http://dx.doi.org/10.1162/003465398557825>
- 1360 [22] Easterly, W., and S. Rebelo (1993), Fiscal policy and economic growth," *Journal of monetary economics*,  
1361 32(3), 417-458.
- 1362 [23] Ehigiamusoe, K. U. and Hooi Hooi Lean, H. H. (2018), Do economic and financial integration stimulate  
1363 economic growth? A critical survey, No 2018-51, Economics Discussion Papers, Kiel Institute for the  
1364 World Economy (IfW)
- 1365 [24] El-Bannany M. (2017). Factors influencing accounting conservatism in Banks: The UAE case. *Journal of*  
1366 *Governance and regulation*, Volume 6, Issue 2.
- 1367 [25] Ferede, E. and Dahlby, B. (2012), The Impact of Tax Cuts on Economic Growth: Evidence From the  
1368 Canadian Provinces, *National Tax Journal*, 65, (3), 563-94
- 1369 [26] Gemmell N., Kneller R., McGowan D., Sanz I, Sanz-Sanz, J.F. (2016), Corporate Taxation and  
1370 Productivity Catch-Up: Evidence from European Firms, *The Scandinavian Journal of Economics*, Vol. 120,  
1371 Issue 2, Pages 372-399 <https://doi.org/10.1111/sjoe.12212>
- 1372 [27] Gemmell N., Kneller R., Sanz I. (2015), « Does the Composition of Government Expenditure Matter for  
1373 Long-Run GDP Levels? », *Oxford Bulletin of Economics and Statistics*, 0305-9049.
- 1374 [28] Ghosh S, Gregoriou A (2008) The composition of government spending and growth: is current or capital  
1375 spending better? *Oxf Econ Pap* 60(3):484–516
- 1376 [29] Gngain, Y.T.B, Du, L., Assamoi G.R; Edjoukou A. J. R. and Kassi, D.F. (2019), Public Spending,  
1377 Income Inequality and Economic Growth in Asian Countries: A Panel GMM Approach, *Economics*, 7, (4),  
1378 1-15
- 1379 [30] Gupta, S., Verhoeven, M., & Tiongson, E. R. (2003). Public spending on health care and the poor. *Health*  
1380 *economics*, 12(8), 685-696.
- 1381 [31] Gupta S, Clements B, Baldacci E, Mulas-Granados C (2005) Fiscal policy, expenditure composition and  
1382 growth in low-income countries. *J Int Money Finance* 24(3):441–463
- 1383 [32] Hair, J.F., Anderson, R.E., Tatham, R. L., & Black, W. C. (1995). *Multivariate data analysis*. New York:  
1384 Macmillan. (3rd Edition).
- 1385 [33] Hansen, L. P. (1982). Large sample properties of generalized method of moments estimators. *Econometrica*  
1386 50: 1029–1054.
- 1387 [34] Hausman, J (1978), Specification Tests in Econometrics, *Econometrica*, 46, (6), 1251-71

- 1388 [35] Hoechle D (2007) Robust standard errors for panel regressions with cross-sectional dependence. *Stata J.* 7,  
1389 281–312
- 1390 [36] Im, K. S., Pesaran, M. H. and Shin. Y., (2003). “Testing for Unit Roots in Heterogeneous Panels,” *Journal*  
1391 *of Econometrics* 115: 53-74
- 1392 [37] IMF, (2019), *International Monetary Fund Government Finance Statistics 2019*, IMF. Washington, D.C.
- 1393 [38] Kalecki M. (1943), « Political Aspects of full Employment ». Reprinted in M. Kalecki M. (1971), *Selected*  
1394 *Essays on the Dynamics of the Capitalist Economy*, Cambridge: Cambridge University Press.
- 1395 [39] Kennedy, P. (1992), *A guide to econometrics*. Oxford: Blackwell.
- 1396 [40] Keynes, J. M. (1936). *General theory of employment, interest and money*. Palgrave Macmillan, London
- 1397 [41] Kimaro, E.L., Keong, C.C., Sea, L.L. (2017). *Government Expenditure, Efficiency and Economic Growth:*  
1398 *A Panel Analysis of Sub-Saharan African Low Income Countries. African Journal of Economic Review*, V  
1399 (II), 34–54.
- 1400 [42] King R, Rebelo S (1990) Public policy and economic growth: developing neoclassical implications. *J Polit*  
1401 *Econ* 98(1):126–151
- 1402 [43] Kmenta J (1986) *Elements of Econometrics*, second ed., Macmillan, NY
- 1403 [44] Kneller R, Bleaney M, Gemmell N (1999) Fiscal policy and growth: evidence from OECD countries. *J*  
1404 *Public Econ* 74(2):171–190
- 1405 [45] Landau, D. (1986), *Government and Economic Growth in the Less Developed Countries: An Empirical*  
1406 *Study for 1960-1980, Economic Development and Cultural Change*, 35, (1), 35-75
- 1407 [46] Lee Y, Gordon R (2005) Tax structure and economic growth. *J Public Econ* 89:1027–1043
- 1408 [47] Levin, A., Lin, C.-F. and Chu, C.S.J. (2002), Unit root tests in panel data: asymptotic and finite-sample  
1409 properties, *Journal of Econometrics*, 108, (1), 1-24
- 1410 [48] Levine R. and Renelt D. (1992), A Sensitivity Analysis of Cross-Country Growth Regressions. *American*  
1411 *Economic Review*, vol. 82, issue 4, 942-63
- 1412 [49] Li, H, Xu, L. C, Zou, H. (2000) Corruption, Income Distribution, and Growth, *Economics and Politics*.  
1413 Vol. 12, Issue 2, Pages 155-182
- 1414 [50] Lupu, D, Petrisor, M. B., Bercu, A, Tofan, M. (2018). "The Impact of Public Expenditures on Economic  
1415 Growth: A Case Study of Central and Eastern European Countries," *Emerging Markets Finance and Trade*,  
1416 *Taylor & Francis Journals*, vol. 54(3), pages 552-570, February.
- 1417 [51] Maddala, G. S. and Wu, S. (1999). “A Comparative Study of Unit Root Tests with Panel Data and a New  
1418 Simple Test,” *Oxford Bulletin of Economics and Statistics Special Issue*, 0305-9049.
- 1419 [52] Mallick, L., Das, P. K. and Pradhan, K. C., (2016). "Impact of educational expenditure on economic growth  
1420 in major Asian countries: Evidence from econometric analysis," *Theoretical and Applied Economics*,  
1421 *Asociatia Generala a Economistilor din Romania - AGER*, vol. 0(2(607), S), pages 173-186, Summer
- 1422 [53] Marquardt, D. W. (1970), Generalized inverses, ridge regression, biased linear estimation, and nonlinear  
1423 estimation. *Technometrics*, 12, 591-256.

- 1424 [54] Ndambiri H, Ritho C, Ng'ang'a S, Kubowon P, Mairura F, Nyangweso P et al (2012) Determinants of  
1425 economic growth in sub-Saharan Africa: a panel data approach. *International Journal of Economics and*  
1426 *Management Sciences* 2(2):18–24
- 1427 [55] Neter, J., Wasserman, W., Kutner, & Kutner, M.H. et al., (1989). *Applied linear regression models.*  
1428 *Homewood, IL: Irwin.*
- 1429 [56] Nubukpo K. (2003), « Dépenses publiques et croissance des économies de l'UEMOA », CIRAD,  
1430 Montpellier (France). pp. 1-28.
- 1431 [57] OECD (2007). *Organization for Economic Co-operation and Development.* OCDE, Paris, France.
- 1432 [58] Parks R (1967) Efficient estimation of a system of regression equations when disturbances are both serially  
1433 and contemporaneously correlated. *J. Am. Stat. Assoc.* 62, 500–509
- 1434 [59] Park H (2006) Expenditure composition and distortionary tax for equitable economic growth. *IMF*  
1435 *Working Papers* 06(165)
- 1436 [60] Pesaran M H (2004) *General Diagnostic Tests for Cross Section Dependence in Panels.* IZA Discussion  
1437 *Paper Series, DP No. 1240*
- 1438 [61] Pesaran M H (2007) "A simple panel unit root test in the presence of cross-section dependence," *Journal of*  
1439 *Applied Econometrics*, John Wiley & Sons, Ltd., vol. 22(2), pages 265-312.
- 1440 [62] Prichard, W (2016) *Taxation, Governance and Growth, Professional Development Reading Pack,*  
1441 [www.gsdr.org](http://www.gsdr.org), No. 43.
- 1442 [63] Pushak T, Tiongson E, Varoudakis A (2007) *Public finance, governance, and growth in transition*  
1443 *economies: empirical evidence from 1992-2004.* World Bank Policy Research Working Paper 4255
- 1444 [64] Ram, R. (1986), *Government Size and Economic Growth: A New Framework and Some Evidence from*  
1445 *Cross-Section and Time-Series Data,* *American Economic Review*, 76, (1), 191-203
- 1446 [65] Romer P-M. (1986), « *Increasing Returns and Long-Run Growth* », *Journal of Political Economics*, Vol.  
1447 94, pp. 1002-37.
- 1448 [66] Romero-Ávila D, Strauch R (2008) *Public finances and long-term growth in Europe: evidence from a panel*  
1449 *data analysis.* *Eur J Polit Econ* 24(1):172–191
- 1450 [67] Sáez, M.P., Álvarez-García, S., Rodríguez, D.C. (2017). *Government expenditure and economic growth in*  
1451 *the European Union countries: New evidence.* *Bulletin of Geography. Socioeconomic Series*, 36, 127–133.  
1452 DOI: 10.1515/bog-2017-0020.
- 1453 [68] Samuelson P-A. (1958), « *Aspects of Public Expenditure Theories* », *the Review of Economics and*  
1454 *Statistics*, Vol. 40, No. 4, pp. 332-338.
- 1455 [69] Sargan, J. D. 1958. *The estimation of economic relationships using instrumental variables.* *Econometrica*  
1456 26: 393–415.
- 1457 [70] Scully, G. (1989), *The size of the state, economic growth and the efficient utilization of national resources,*  
1458 *Public Choice*, 63, (2), 149-164
- 1459 [71] Shabbir, G., Anwar, M and Adil, S. (2016) *Corruption, Political Stability and Economic Growth, The*  
1460 *Pakistan Development Review*, Vol. 55, No. 4, *Papers and Proceedings: PARTS I and II The 31st Annual*

1461 General Meeting and Conference of the Pakistan Society of Development Economists Islamabad,  
1462 December 17 - 19, 2015 (Winter 2016), pp. 689-702

1463 [72] Tanzi V, Davoodi H (1997) Corruption, public investment, and growth. *IMF Working Papers* 97(139)

1464 [73] Tanzi, V., Zee, H. (1997). Fiscal policy and long-run growth. *IMF Staff Papers*, 44(2), 179–209.

1465 [74] Van Eyden, R.; Difeto, M.; Gupta, R.; Wohar, M.E. (2019) Oil price volatility and economic growth:  
1466 Evidence from advanced OECD countries using over one century of data. *Appl. Energy* 2019, 233, 612–  
1467 621.

1468 [75] Wang et al.,(2011). Transformational Leadership and Performance Across Criteria and Levels: A Meta-  
1469 Analytic Review of 25 Years of Research. *Group & Organization Management* 36(2):223-270.

1470 [76] Wilson, P.W. (2005), "efficiency in education production among PISA countries, with emphasis on  
1471 transitioning economies", Department of Economics, University of Texas

1472 [77] Wooldridge J M (2002) *Econometric Analysis of Cross Section and Panel Data*. The MIT Press, Cambridge

1473 [78] World Bank, (2019). *World Development Indicators*. World Bank, Washington, DC

1474 [79] World Bank, (2019). *World Governance Indicators*. World Bank, Washington, DC.

1475 [80] Yasin, M. (2000). Public Spending and Economic Growth: Empirical Investigation of Sub-Saharan Africa.  
1476 *Southwestern Economic Review*, 1-10.

1477 [81] Yu, B., Fan, S, Saurkar, A, (2009). "Does Composition of Government Spending Matter to Economic  
1478 Growth?," 2009 Conference, August 16-22, 2009, Beijing, China 51684, International Association of  
1479 Agricultural Economists.

1480

1481

# Figures

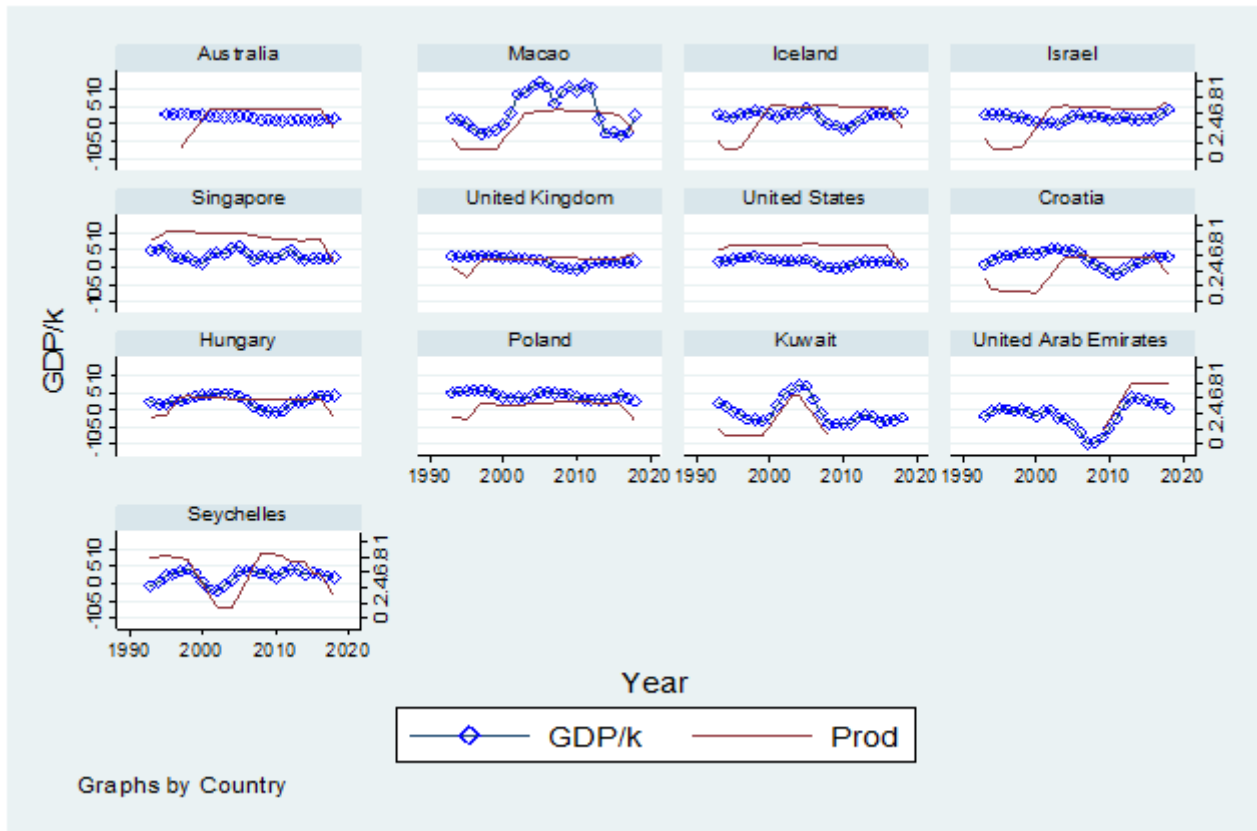
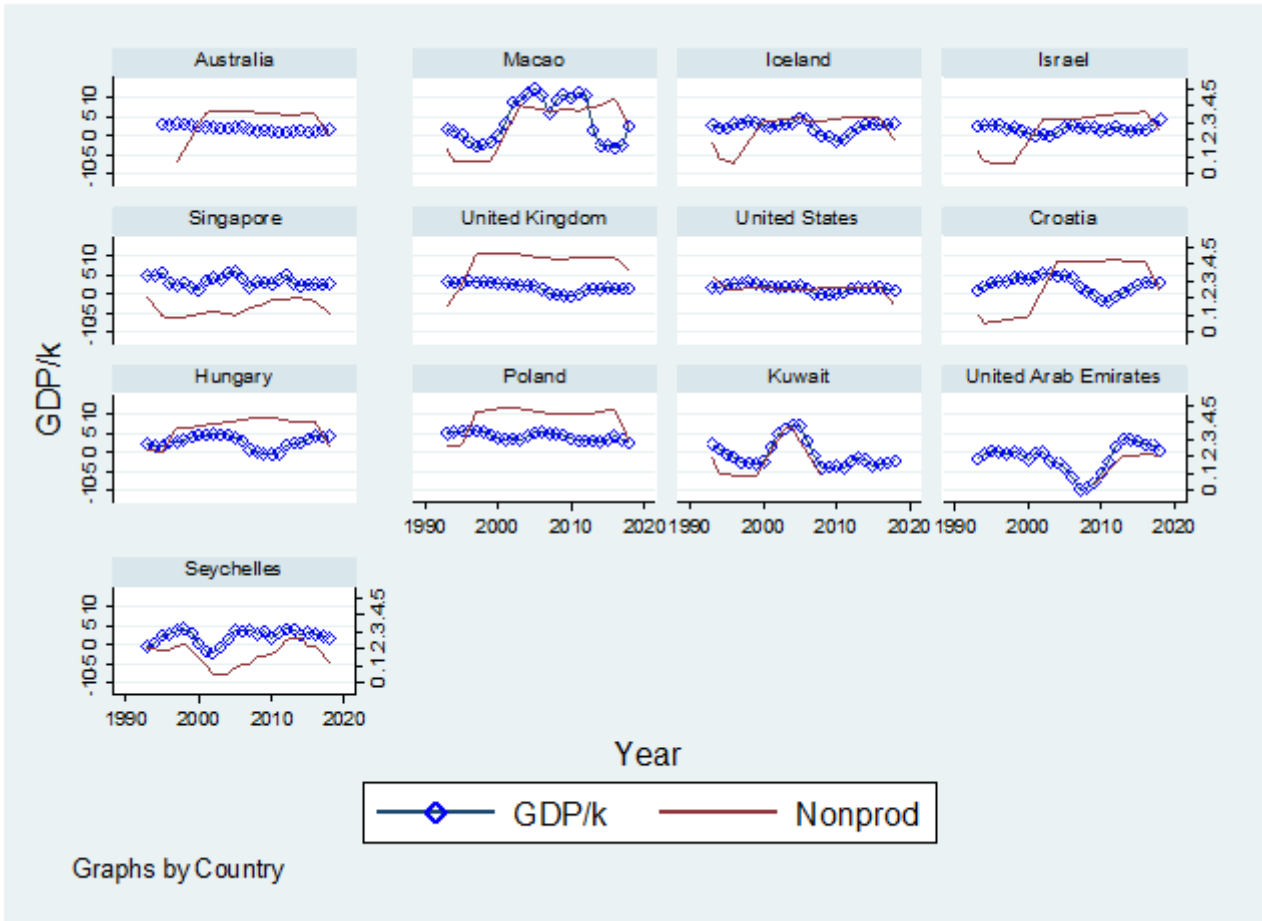


Figure 1

Productive spending and growth in high-income countries





**Figure 2**

Nonproductive spending and growth in high-income countries

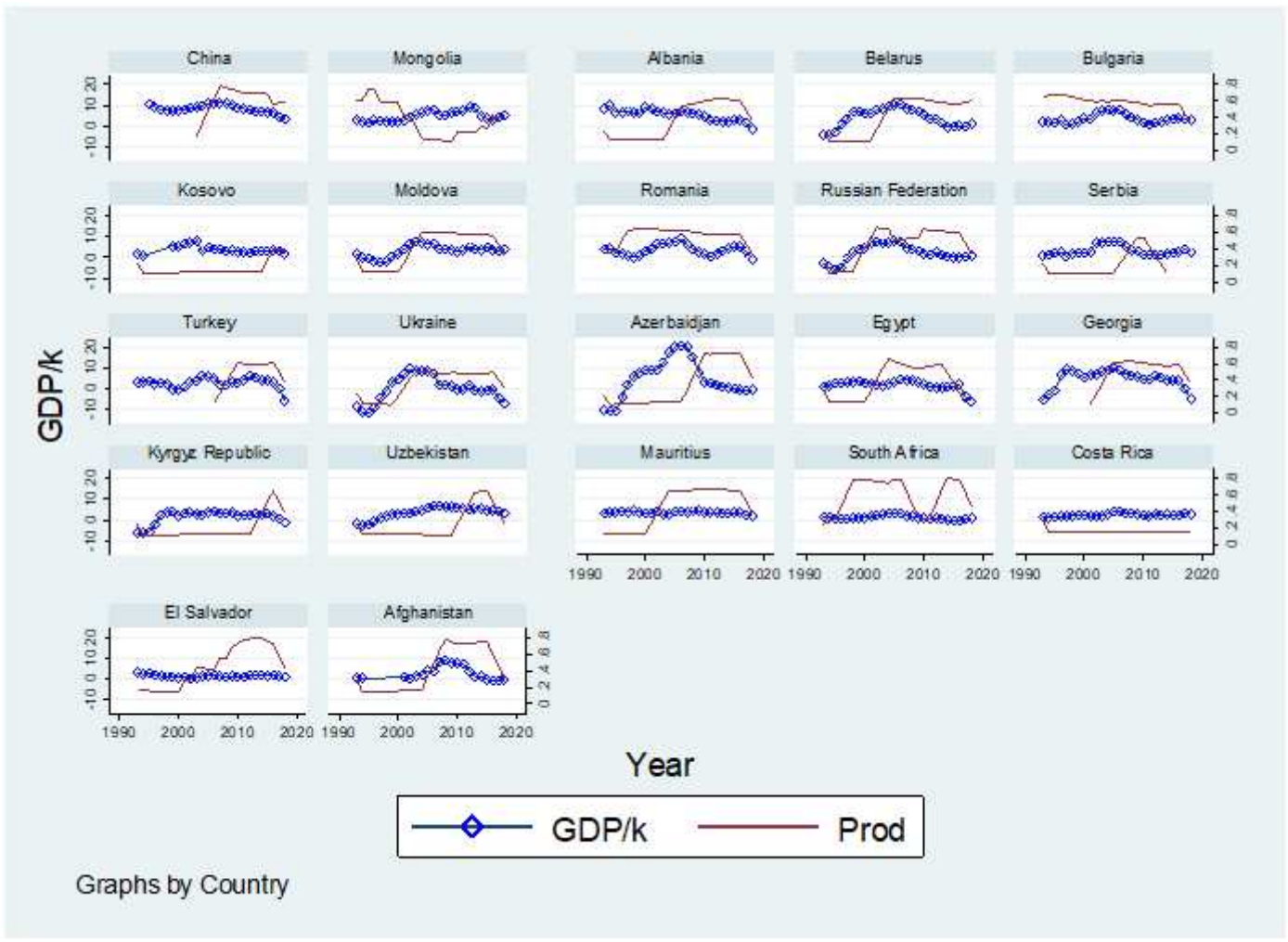
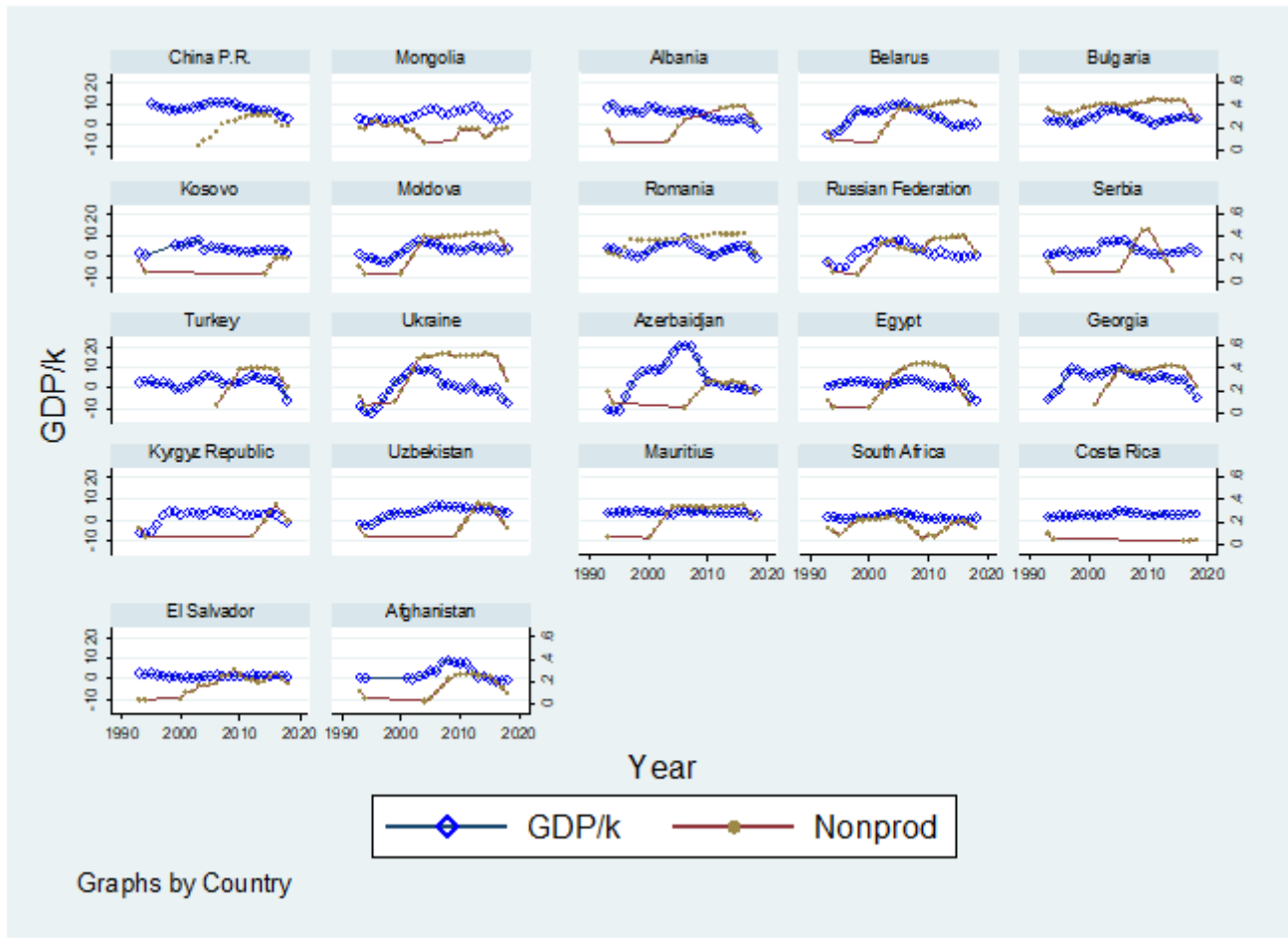


Figure 3

Productive spending and growth in low and middle-income countries



**Figure 4**

Nonproductive spending and growth in low and middle-income countries