

# Supplementary material

Evaluation of the self-reported questionnaires used to assess mental health after the January 2015 terrorist attacks in the Paris Region: IMPACTS study

## Contents

<b>1. Depression (Current and/or reccurent episode)</b>	<b>2</b>
Descriptive statistics (Civilians) . . . . .	2
Descriptive statistics (First responders) . . . . .	2
(A) Distribution and (B) ROC plot (Civilians) . . . . .	3
(A) Distribution and (B) ROC plot (First responders) . . . . .	3
<b>2. Anxiety</b>	<b>4</b>
Descriptive statistics (Civilians) . . . . .	4
Descriptive statistics (First responders) . . . . .	4
(A) Distribution and (B) ROC plot (Civilians) . . . . .	5
(A) Distribution and (B) ROC plot (First responders) . . . . .	5
<b>4. Panic disorder</b>	<b>6</b>
Descriptive statistics (Civilians) . . . . .	6
Descriptive statistics (First responders) . . . . .	6
<b>5. Agoraphobia</b>	<b>7</b>
Descriptive statistics (Civilians) . . . . .	7
Descriptive statistics (First responders) . . . . .	7
(A) Distribution and (B) ROC plot (Civilians) . . . . .	8
(A) Distribution and (B) ROC plot (First responders) . . . . .	8
<b>6. Social phobia</b>	<b>9</b>
Descriptive statistics (Civilians) . . . . .	9
Descriptive statistics (First responders) . . . . .	9
(A) Distribution and (B) ROC plot (Civilians) . . . . .	10

# 1. Depression (Current and/or reccurent episode)

**MINI:** Yes/No (Yes = “Current” or “Recurrent”)

**HAD:** Score [0-21] (Questions: 2, 4, 6, 8, 10, 12, 14)

## Descriptive statistics (Civilians)

Table 1: Depression (MINI)

Level	n	prct
0	116	61.1
1	74	38.9
NA	0	0.0

Table 2: HAD (Depression)

Min.	1st Qu.	Median	Mean	3rd Qu.	Max.	NA's
0	1	3	4.14	6	17	1

## Descriptive statistics (First responders)

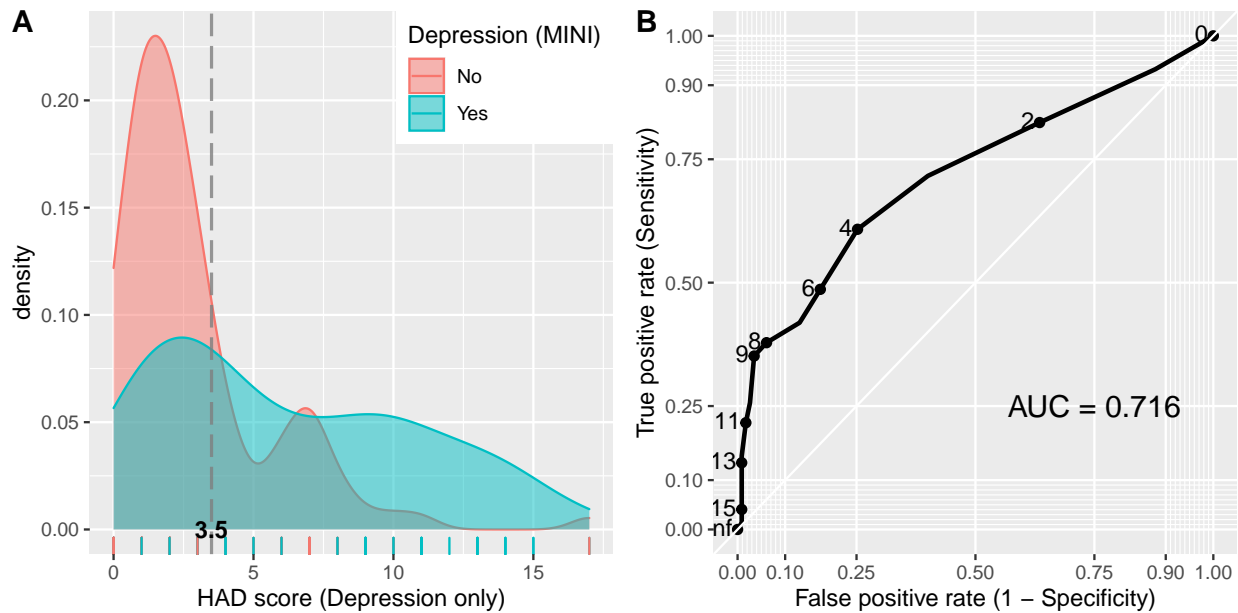
Table 3: Depression (MINI)

Level	n	prct
0	195	84.1
1	37	15.9
NA	0	0.0

Table 4: HAD (Depression)

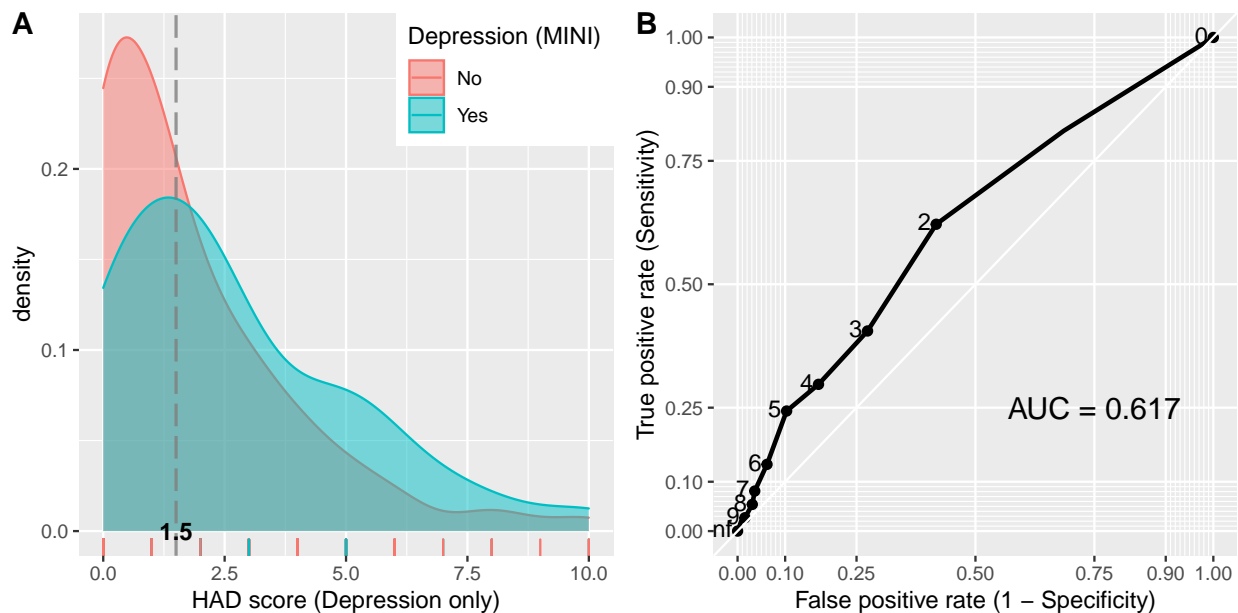
Min.	1st Qu.	Median	Mean	3rd Qu.	Max.	NA's
0	0	1	1.95	3	10	1

(A) Distribution and (B) ROC plot (Civilians)



Analysis done on n=189 with 1 observations removed due to missing values in the MINI and/or the scale. The overall AUC was **0.716** [95% CI: **0.638 - 0.794**]. The “optimal” threshold was **3.5**, at a Youden index of **0.356** giving a sensitivity of **60.8%** and a specificity of **74.8%**.

(A) Distribution and (B) ROC plot (First responders)



Analysis done on n=231 with 1 observations removed due to missing values in the MINI and/or the scale. The overall AUC was **0.617** [95% CI: **0.518 - 0.716**]. The “optimal” threshold was **1.5**, at a Youden index of **0.204** giving a sensitivity of **62.2%** and a specificity of **58.2%**.

## 2. Anxiety

**MINI:** Yes/No (Yes = “panic disorder” or “agoraphobia” or “social phobia” or “generalized anxiety”)

**HAD:** Score [0-21] (Questions: 1, 3, 5, 7, 9, 11, 13)

### Descriptive statistics (Civilians)

Table 5: Anxiety (MINI)

Level	n	prct
0	130	68.4
1	59	31.1
NA	1	0.5

Table 6: HAD (Anxiety)

Min.	1st Qu.	Median	Mean	3rd Qu.	Max.
0	5	7	7.58	9	20

### Descriptive statistics (First responders)

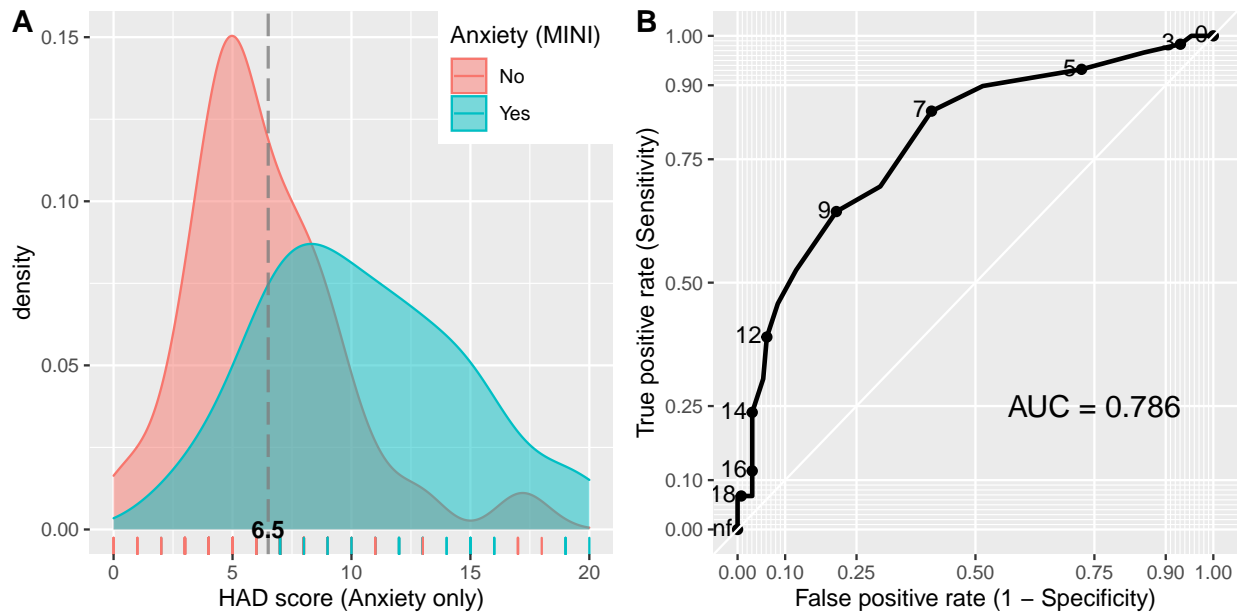
Table 7: Anxiety (MINI)

Level	n	prct
0	199	85.8
1	32	13.8
NA	1	0.4

Table 8: HAD (Anxiety)

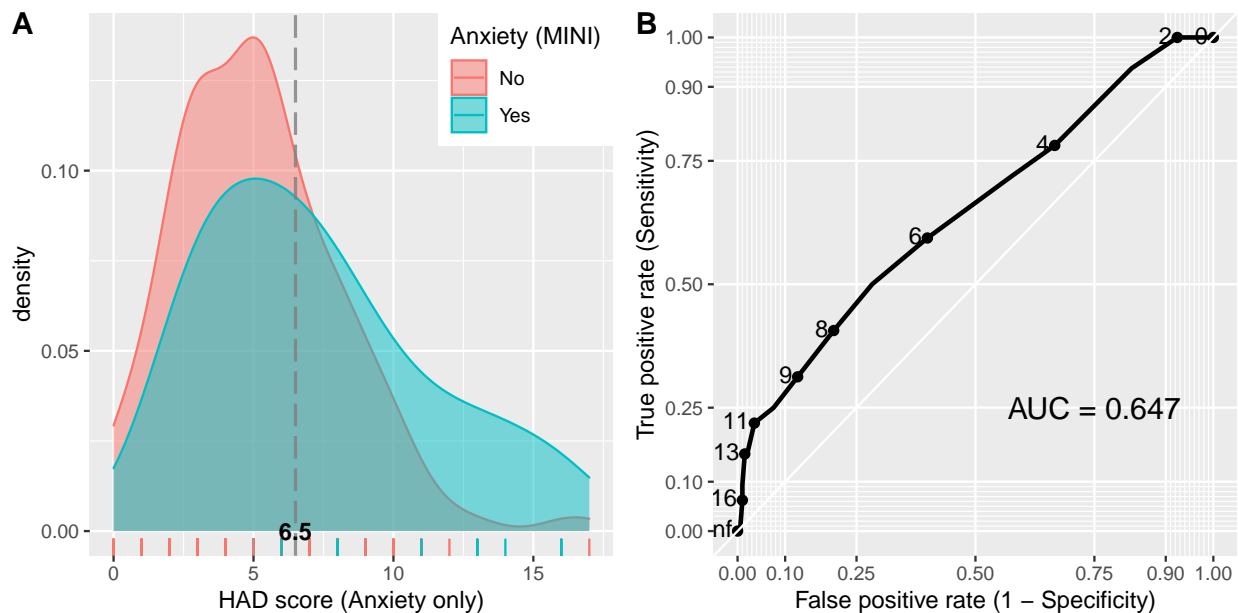
Min.	1st Qu.	Median	Mean	3rd Qu.	Max.	NA's
0	3	5	5.46	7	17	1

(A) Distribution and (B) ROC plot (Civilians)



Analysis done on n=189 with 1 observations removed due to missing values in the MINI and/or the scale. The overall AUC was **0.786** [95% CI: **0.715 - 0.858**]. The “optimal” threshold was **6.5**, at a Youden index of **0.44** giving a sensitivity of **84.7%** and a specificity of **59.2%**.

(A) Distribution and (B) ROC plot (First responders)



Analysis done on n=230 with 2 observations removed due to missing values in the MINI and/or the scale. The overall AUC was **0.647** [95% CI: **0.539 - 0.755**]. The “optimal” threshold was **6.5**, at a Youden index of **0.217** giving a sensitivity of **50%** and a specificity of **71.7%**.

## 4. Panic disorder

**MINI:** Yes/No (Yes = “current panic disorder”)

**HAD:** Score [0-21] (Questions: 1, 3, 5, 7, 9, 11, 13)

### Descriptive statistics (Civilians)

Table 9: Panic disorder (MINI)

Level	n	prct
0	185	97.4
1	5	2.6
NA	0	0.0

Table 10: HAD (Anxiety)

Min.	1st Qu.	Median	Mean	3rd Qu.	Max.
0	5	7	7.58	9	20

### Descriptive statistics (First responders)

Table 11: Panic disorder (MINI)

Level	n	prct
0	229	98.7
1	3	1.3
NA	0	0.0

Table 12: HAD (Anxiety)

Min.	1st Qu.	Median	Mean	3rd Qu.	Max.	NA's
0	3	5	5.46	7	17	1

## 5. Agoraphobia

**MINI:** Yes/No (Yes = “Agoraphobie actuelle”)

**HAD:** Score [0-21] (Questions: 1, 3, 5, 7, 9, 11, 13)

### Descriptive statistics (Civilians)

Table 13: Agoraphobia (MINI)

Level	n	prct
0	140	73.7
1	49	25.8
NA	1	0.5

Table 14: HAD (Anxiety)

Min.	1st Qu.	Median	Mean	3rd Qu.	Max.
0	5	7	7.58	9	20

### Descriptive statistics (First responders)

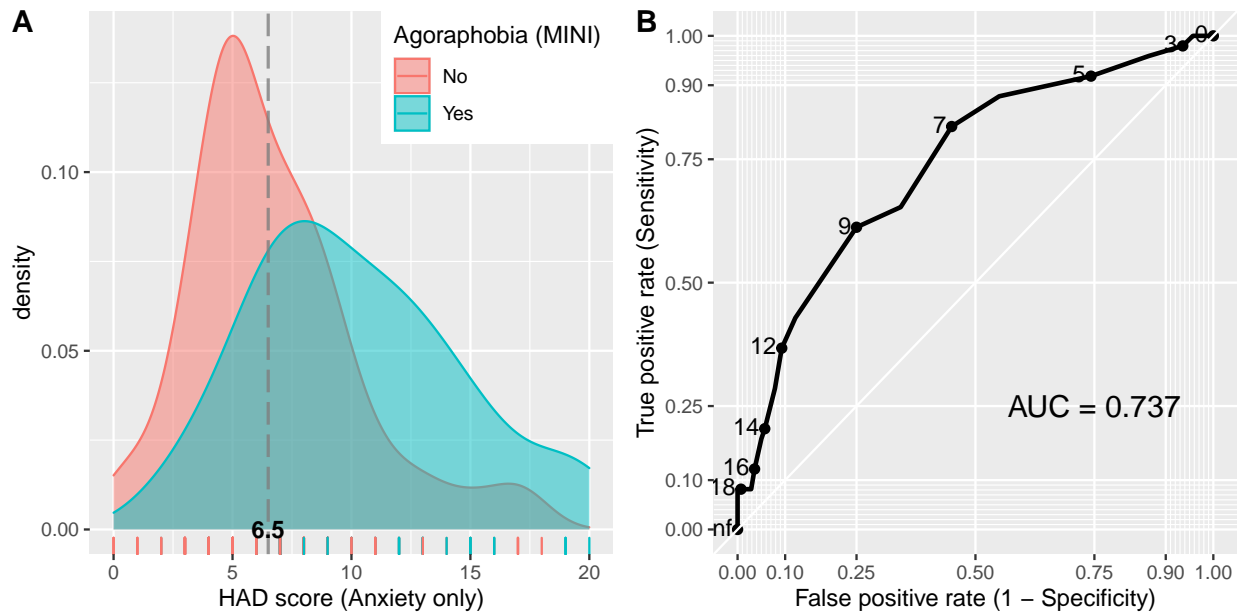
Table 15: Agoraphobia (MINI)

Level	n	prct
0	210	90.5
1	21	9.1
NA	1	0.4

Table 16: HAD (Anxiety)

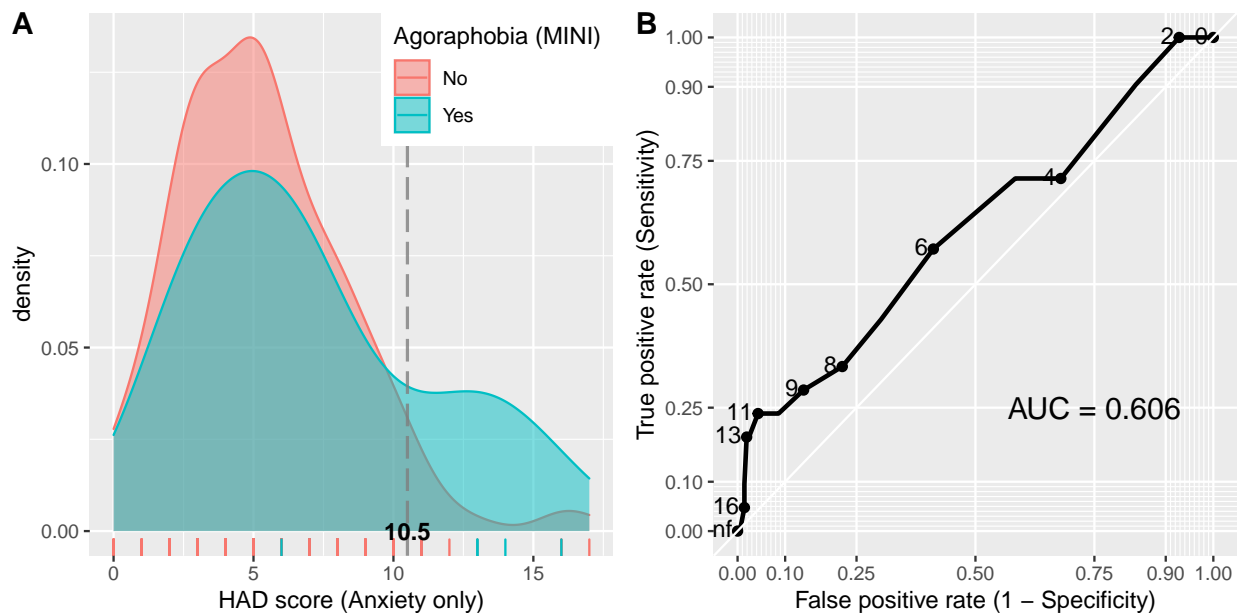
Min.	1st Qu.	Median	Mean	3rd Qu.	Max.	NA's
0	3	5	5.46	7	17	1

(A) Distribution and (B) ROC plot (Civilians)



Analysis done on n=189 with 1 observations removed due to missing values in the MINI and/or the scale. The overall AUC was **0.737** [95% CI: **0.656 - 0.819**]. The “optimal” threshold was **6.5**, at a Youden index of **0.366** giving a sensitivity of **81.6%** and a specificity of **55%**.

(A) Distribution and (B) ROC plot (First responders)



Analysis done on n=230 with 2 observations removed due to missing values in the MINI and/or the scale. The overall AUC was **0.606** [95% CI: **0.47 - 0.743**]. The “optimal” threshold was **10.5**, at a Youden index of **0.195** giving a sensitivity of **23.8%** and a specificity of **95.7%**.



## 6. Social phobia

**MINI:** Yes/No (Yes = “phobie sociale”)

**HAD:** Score [0-21] (Questions: 1, 3, 5, 7, 9, 11, 13)

### Descriptive statistics (Civilians)

Table 17: Social phobia (MINI)

Level	n	prct
0	181	95.3
1	9	4.7
NA	0	0.0

Table 18: HAD (Anxiety)

Min.	1st Qu.	Median	Mean	3rd Qu.	Max.
0	5	7	7.58	9	20

### Descriptive statistics (First responders)

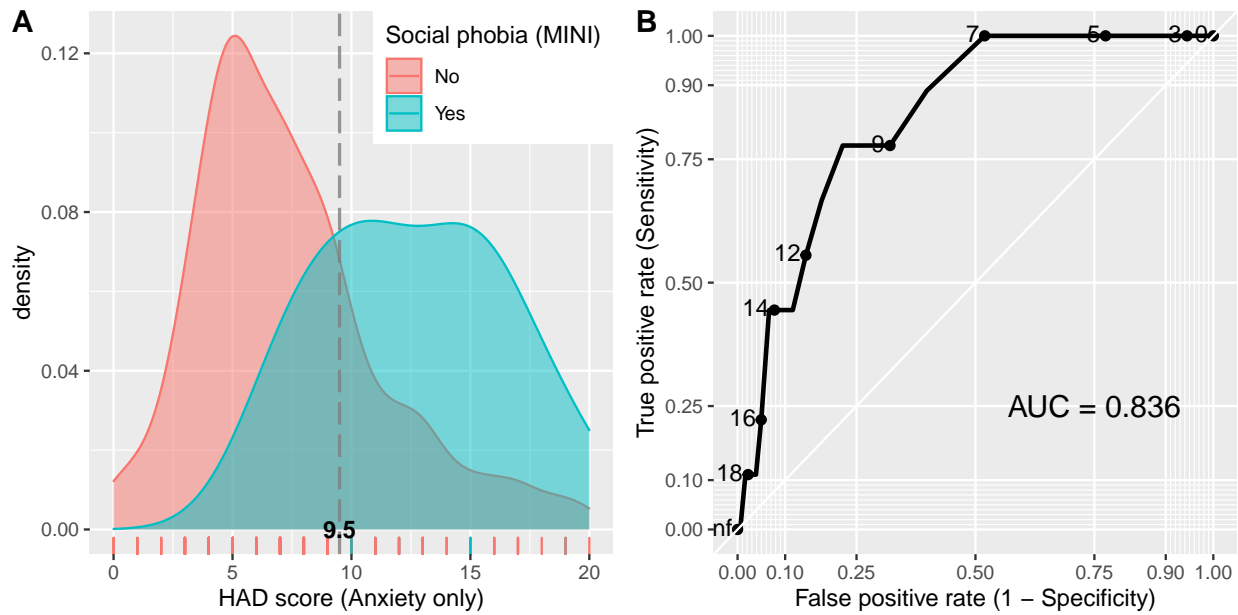
Table 19: Social phobia (MINI)

Level	n	prct
0	230	99.1
1	2	0.9
NA	0	0.0

Table 20: HAD (Anxiety)

Min.	1st Qu.	Median	Mean	3rd Qu.	Max.	NA's
0	3	5	5.46	7	17	1

(A) Distribution and (B) ROC plot (Civilians)



Analysis done on n=190 with 0 observations removed due to missing values in the MINI and/or the scale. The overall AUC was **0.836** [95% CI: **0.73 - 0.942**]. The “optimal” threshold was **9.5**, at a Youden index of **0.557** giving a sensitivity of **77.8%** and a specificity of **77.9%**.