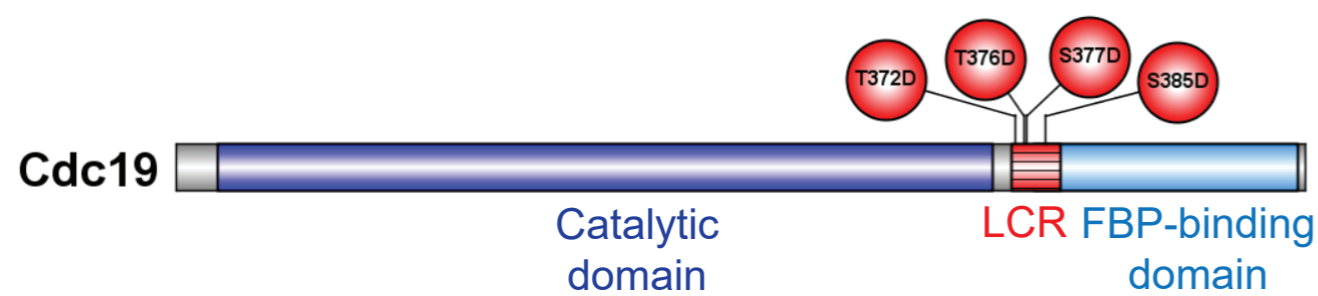
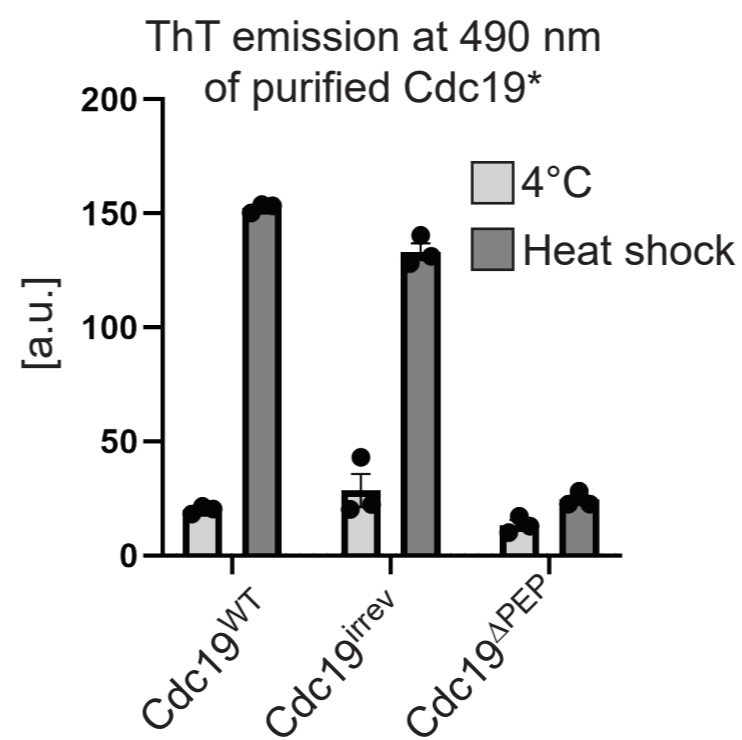


Supplementary Figure 1 - Cdc19 aggregates are amyloids both *in vitro* and *in vivo*

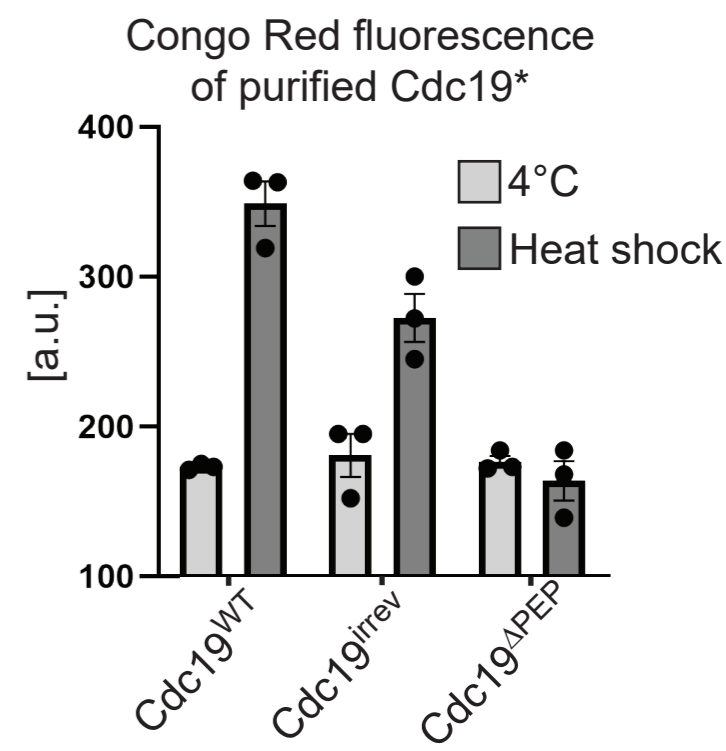
A



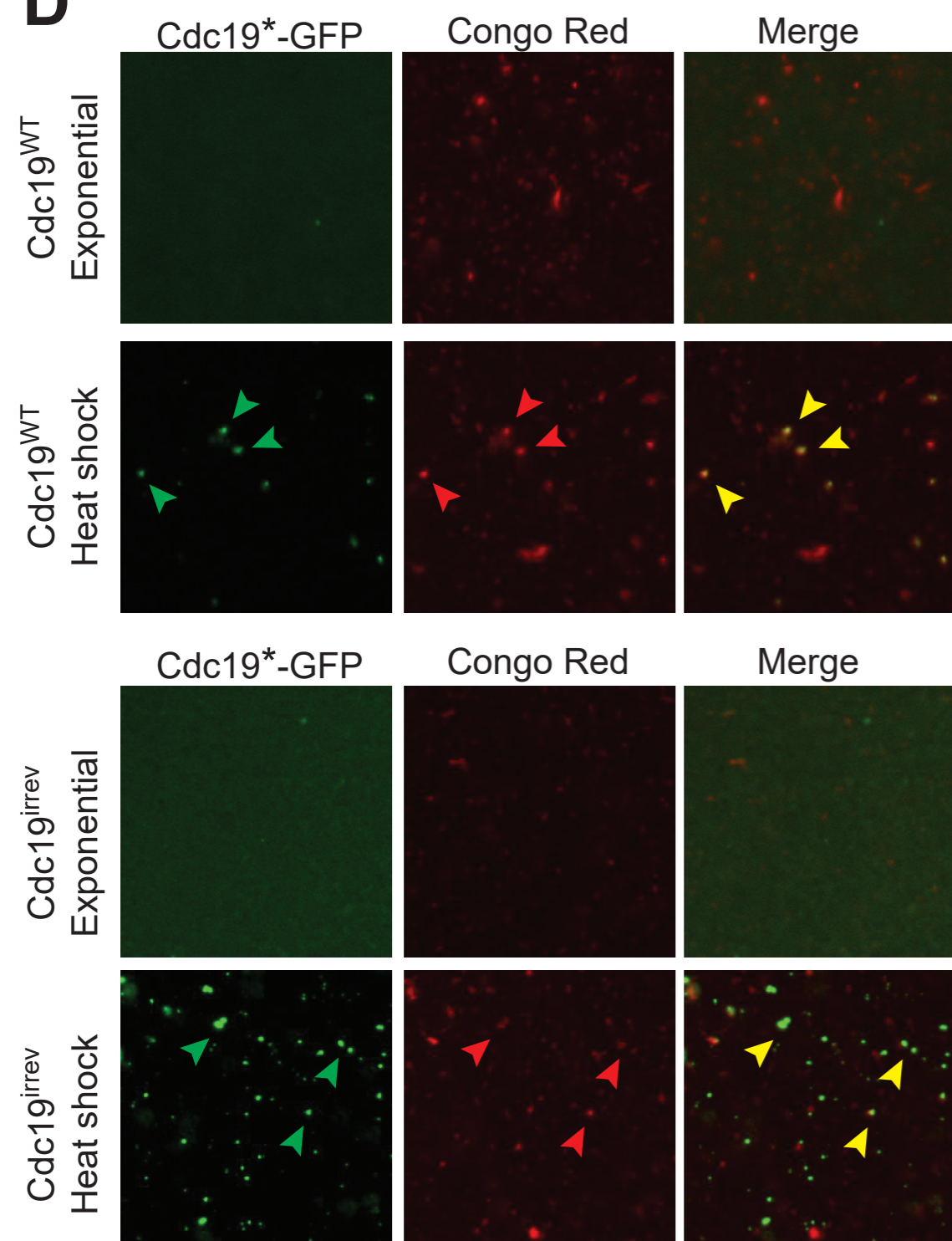
B



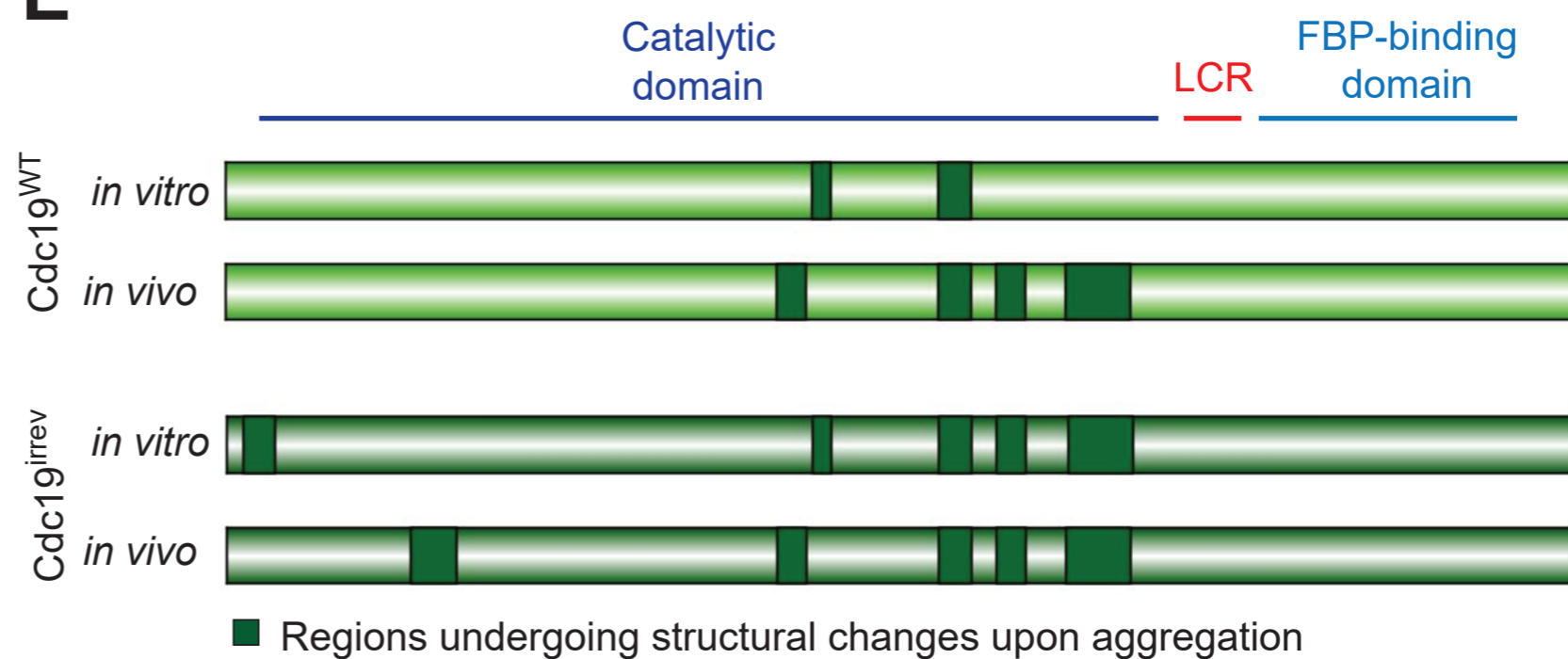
C



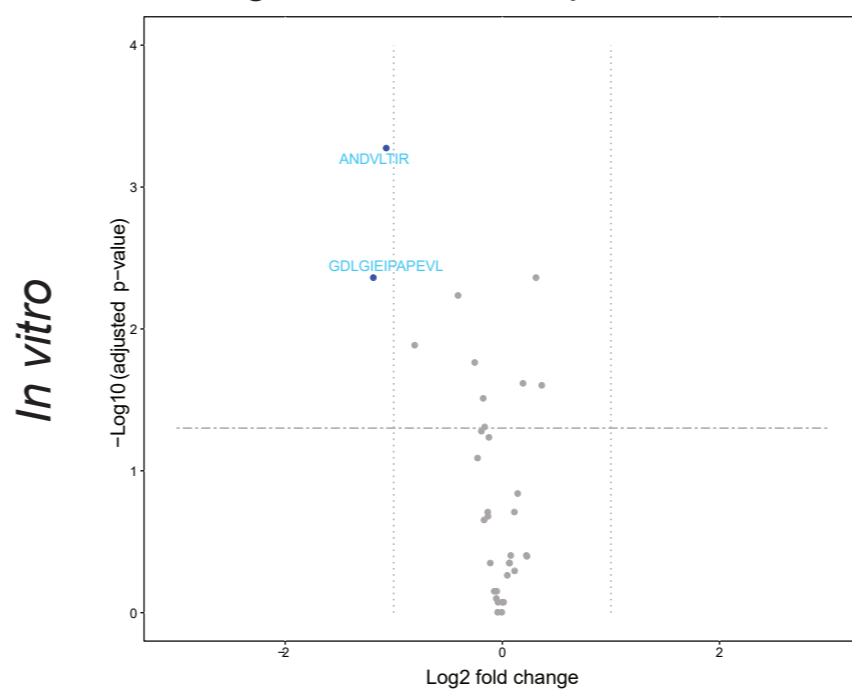
D



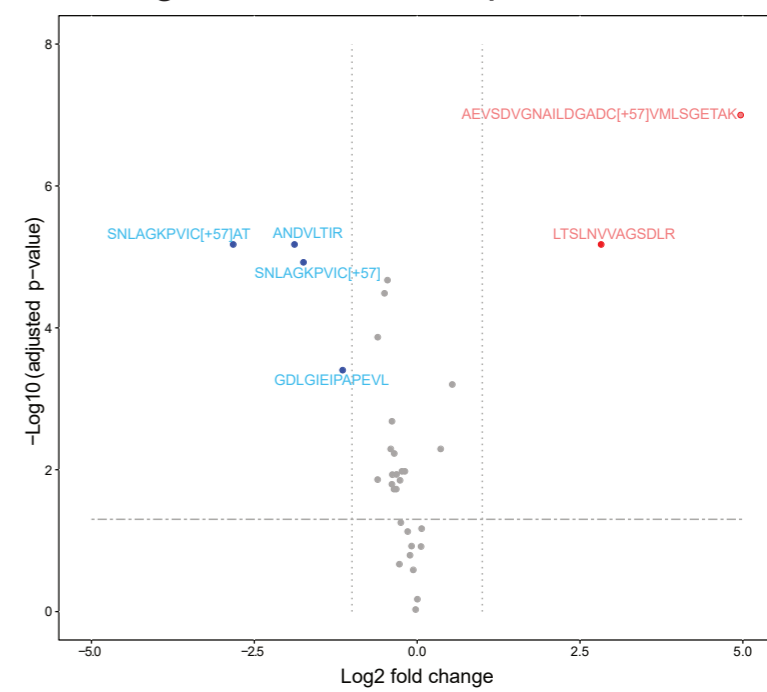
E



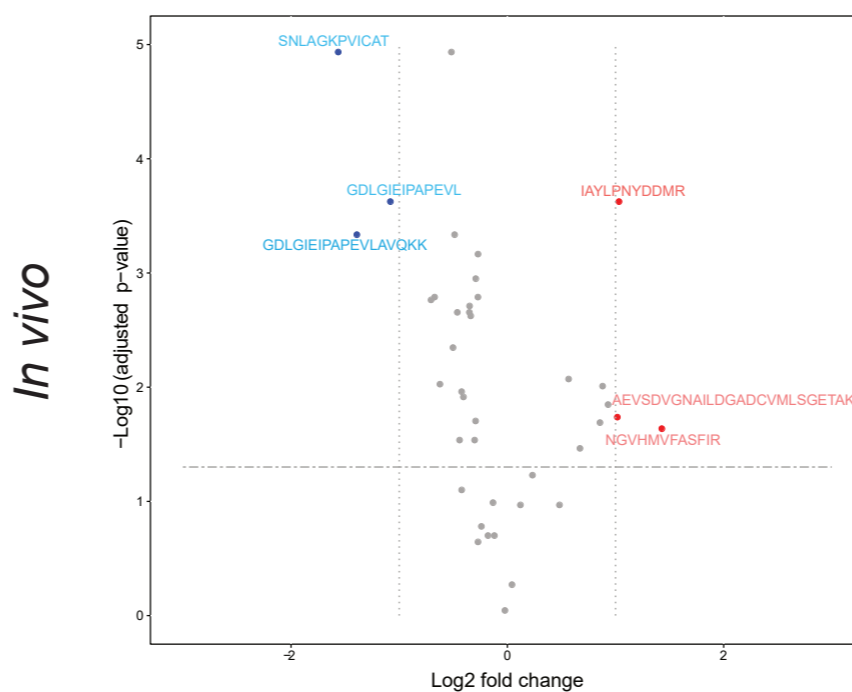
Changes in Cdc19^{WT} upon heat shock



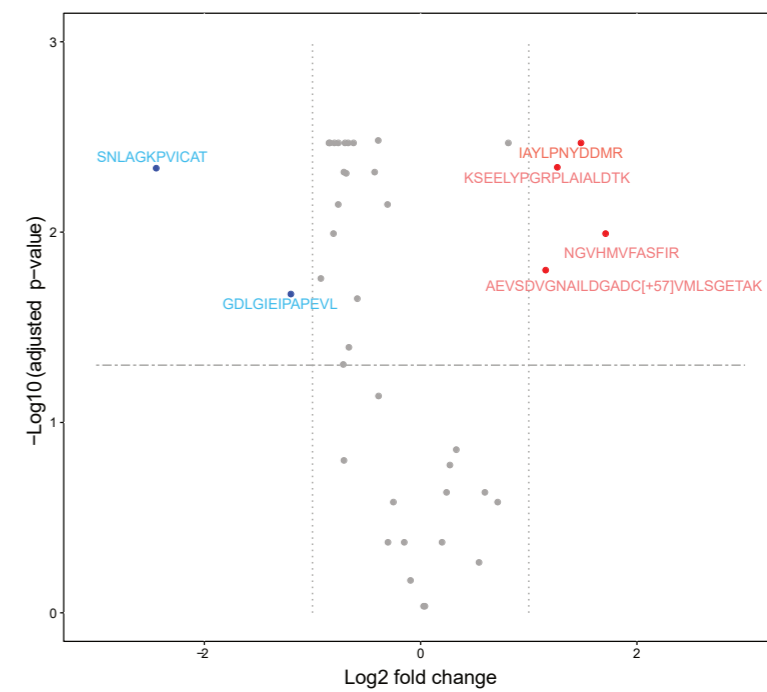
Changes in Cdc19^{irrev} upon heat shock



Changes in Cdc19^{WT} upon starvation



Changes in Cdc19^{irrev} upon starvation



● Not regulated --- Adjusted p-value cutoff
● Down-regulated Fold change cutoff
● Up-regulated