

# Analysis of light emission and schlieren from short gap high voltage streamer impulses representing lightning

Daniel Mitchard (✉ [MitchardDR@cardiff.ac.uk](mailto:MitchardDR@cardiff.ac.uk))

Cardiff University

Phillip Widger

Cardiff University

A. Haddad

Cardiff University

---

## Article

**Keywords:** Schlieren Structures, Timescales, Electrical Breakdown, Streamer Formation Theory

**Posted Date:** March 16th, 2021

**DOI:** <https://doi.org/10.21203/rs.3.rs-310823/v1>

**License:**   This work is licensed under a Creative Commons Attribution 4.0 International License.

[Read Full License](#)

---

# Abstract

Light emissions and schlieren structures were simultaneously observed from streamers produced by tens of kilovolts 1.2/50  $\mu$ s impulses, representing the high voltage component of lightning, applied across a 4 cm air gap between a variety of electrode geometries and a ground plane in an unconfined environment. The results demonstrated that the light emissions and Schlieren structures coincide along the same streamer filaments but on different timescales; the light existing only during the microsecond timeframe impulse whereas the Schlieren continued to develop into the millisecond timeframe, moving towards the centre of the air gap whilst diffusing into the surrounding air within 100 ms. If an electrical breakdown did occur, the Schlieren structures outside the arc remained visible. Streamer formation theory for high voltage impulses is subsequently refined to include the observed Schlieren mechanism.

## Introduction

Lightning is one of the most powerful and destructive naturally occurring electrical phenomena, and the protection of vital infrastructure, such as power transmission and transportation, from strikes and destructive effects is of great importance. However, given its unpredictability, it can be very demanding to carry out detailed studies of the underlying mechanisms and characteristics of lightning and related phenomena in the natural environment. Laboratories have been developed to study the high current and high voltage components individually, which are often used to represent the physically destructive aspects through joule heating, electromagnetic forces, and electric field breakdown effects in both conducting and insulating materials. This is because the production of a combined high current and high voltage arc as seen in a natural lightning strike are beyond the capabilities of any existing laboratory generator. A laboratory high voltage component can consist of impulses up to the megavolt magnitude range, but most frequently tens to hundreds of kilovolts are used which last hundreds of microseconds. These can, for example, be used to understand whether a power substation component may fail by creating a fault-like overvoltage condition. Applying a high voltage induced field to test such components can determine the insulation strength of an insulating gap, such as air or a solid insulation material, and provide statistical evidence as to the likelihood of an electrical breakdown to ground. The mechanism by which the air breakdown would occur is through the formation of transient streamers, lasting for only a few microseconds, within the air gap between the high voltage electrode and ground which, if the conditions are right, could create a conductive channel between the two.

Streamer formation [1–3] in positive and negative electric fields, for example, in an air gap between a high voltage electrode and ground plane, differ due to the mobility of heavier positive ions and lighter electrons, as illustrated in Fig. 1. For positive streamers, free electrons in the air are accelerated towards the positive electrode and collide with neutral molecules liberating more electrons and creating positive ions. The freed electrons, in turn, accelerate and collide with other molecules creating an avalanche called a Townsend discharge [1], with the large number of positive ions forming an additional electric field which intensifies the ionisation process. Some lower energy electrons may recombine with positive ions emitting photons of light, typically in the ultraviolet to visible wavelength range. Light in the same

wavelength range can also be emitted via Bremsstrahlung radiation. Filament structures of charge particles grow outwards from the electrodes and can branch in different directions, including successive avalanches in the regions ahead of the streamer. As the rate of ionisation exceeds the rate of recombination, the current density rises and the air is heated, reducing density, and increasing conductivity of the streamer. In certain scenarios, such as for sufficiently high fields across long gaps, one or more of the filaments may turn into a highly conducting leader which could then result in an electrical breakdown. For negative streamers, a single free electron is accelerated away from the negative electrode colliding with neutral molecules and creating a localised avalanche and additional field. Electrons can also be freed from the surface of the electrode. Further electrons ahead of this region are liberated by photons from the first avalanche creating another localised field. This process continues onwards whilst electrons are accelerated between the regions creating filament structures which grow away from the electrodes. As with positive streamers, the current density rises within the negative streamer reducing its density and increasing its conductivity and, in certain scenarios, a leader may be formed which could result in an electrical breakdown. Electrode geometry is also known to affect the structure of streamer filaments as this alters the structure of field lines within the air gap. Sharp edges, such as at the point of an electrode, create quasiuniform fields resulting in narrower and more direct streamer structures. Flat or rounded edges, such as around a hemispherical electrode, create highly divergent fields resulting in broader structures.

The observation of both light emissions and Schlieren structure have traditionally been used to study streamers and other related phenomena [4], with recent examples including using optical cameras to image streamers in air [5–7] and Schlieren imaging to analyse streamer and leader structure [8–11]. They are sometimes used interchangeably to derive characteristics but are rarely used simultaneously. Although both light and Schlieren imaging can be used to observe the structure and shape of streamers, with both being a result of streamer formation, the underlying mechanisms for each are very different. The emitted light is a result of either the recombination of atoms or Bremsstrahlung radiation and is often visible to the naked eye as a blue-white flash which can be captured by a wide range of cameras. Schlieren is an optical effect within the air caused by localised density changes typically from thermal or shock effects and is much harder to see but is sometimes visible by observing light from an external source being refracted at differing angles through the Schlieren. A specialised optical setup using filters, knife edges, mirrors and/or lenses are typically required to capture the effect reliably on camera.

In this paper, a high voltage generator was used to apply both positive and negative high voltage 1.2/50 impulses to an electrode of three different geometries; round, flat and point, positioned 4 cm from an opposing ground plane. The experiments were carried out in an unconfined environment, i.e., outside of a test chamber, to minimise the effect of shockwaves reflected from nearby surfaces interfering with the results. The breakdown voltage, governed by the critical reduced field strength of the air at that voltage, for each polarity and geometry was found experimentally such that the electric field could be applied as close to this value as possible without a breakdown occurring. A 1.2/50  $\mu$ s waveform conforming to the BS60060-1 standard [12] was used in the approximate range of -65 to + 50 kV. The voltage waveform was recorded via a capacitive voltage divider connected between the high voltage generator and electrode,

whereas the current was measured by a current transducer positioned around the isolated earth lead connecting the ground plane to earth. A pair of synchronised cameras designed to trigger at the same time as the application of the high voltage impulse were used to simultaneously capture the resulting streamers. The cameras captured a series of still images at a rate of 21,000 fps resulting in each image lasting 47.62  $\mu\text{s}$ , with a timing error of 10.0  $\mu\text{s}$  between them. The first camera was positioned to observe directly the visible light emitted from the streamers whereas the second was positioned to observe the Schlieren effect through a specialised optical setup consisting of an LED point light source, two biconvex lenses and a knife edge. Experiments were carried out to observe both the visible light emissions and Schlieren structures of the resulting streamers. The lens on the second camera was then adjusted and a second set of experiments were carried out to observe the development of the Schlieren structures over a longer period. Schlieren structures were also observed during several electrical breakdowns. All images were enhanced using post-processing image subtraction and brightening techniques.

## Results

### Comparison of light emissions and Schlieren structures

Both positive and negative high voltage impulses were applied to each electrode geometry. Although the critical reduced field strength of ambient air is typically around 33 kV/cm, it can vary due to polarity, geometry, temperature, humidity, etc., and so it was found experimentally by stepping up the voltage by 0.4 kV and applying an impulse until a breakdown occurred. Once this had happened, the voltage was stepped down by 0.4 kV and a further impulse applied which produced visible streamers, usually without a breakdown occurring. Both cameras were then used to image the light emissions and Schlieren structures simultaneously, and the voltage and current profiles were recorded. In all experiments, the light emissions observed by the first camera and Schlieren structures observed by the second camera were both seen at the same time as the high voltage field was applied. However, the light emissions were only observed during the first frame, i.e., they were present for less than 47.62  $\mu\text{s}$ , whereas the Schlieren structures were observed from the first frame onwards. The first Schlieren frame consisted of both light emissions and Schlieren structures whereas the second Schlieren frame consisted of only the Schlieren structures. As there was no real change in the Schlieren structures in the frames that immediately followed, the first light emission frame, displaying only light emissions, was compared to the second Schlieren frame, displaying only Schlieren structures. Examples of the data obtained are presented in Figure 2.

The high voltage impulse profile, as measured by the voltage divider, was verified to conform to the BS60060-1 electrical standard in all cases. The current profile, as measured by the current transformer, exhibited several small spikes in the Ampere range, consistent with a relatively small flow of charge resulting from ionisation of the air, often classified as partial discharge. It can be seen from Figure 2 that both the light emissions and Schlieren structures coincide along the same streamer filaments as expected. However, there is light emitted from parts of these filaments where no Schlieren effect could be seen, notably in areas further from the high voltage electrodes. This would indicate that, even though

filaments have been formed which connect the electrode and ground plane, the density change within these filaments has only started to occur where the field is most intense, i.e., immediately next to the high voltage electrode. There is also a visible distinction between light emissions for positive and negative streamers in Figure 2. The positive streamers consist of uniform channels emanating from the high voltage electrode and, in some cases, from the ground plane. These channels decrease in intensity the further away they are from the electrode and plane, whereas the negative streamers consist of distinct areas of more intense light emissions within the air gap. This is consistent with the current theory as illustrated in Figure 1.

### **Analysis of Schlieren structures**

The settings on the second camera were adjusted to give a magnified view of the Schlieren structures as well as an extended running time up to one second after the high voltage impulse had been applied, with the first camera no longer being used. The above experiments were repeated using the same high voltage 0.4 kV stepping method, although the point electrode was replaced with a second, sharper point electrode to minimise streamer formation from the sides as seen in Figure 2. Examples of the data obtained over time for positive high voltage impulses are presented in Figure 3 and negative high voltage impulses are presented in Figure 4. Note that, in these figures, the first Schlieren images also include the light emissions.

In all cases, the Schlieren structures were found to continue developing into the millisecond timeframe along filaments which connect between the previously energised electrode and the ground plane. Data from the current transducer confirmed that there was no charge flow during this period. There were notable density changes, which appear as brighter regions, not only along the filaments but also at both the high voltage electrode and ground plane. This is reminiscent of the filaments seen in the light emission images presented in the previous section, despite the light only being emitted in the first frame, i.e., within 47.62  $\mu\text{s}$ , and the high voltage impulse having completely diminished by the fourth frame at 190.43  $\mu\text{s}$ . The Schlieren structures then expand in a perpendicular direction to their alignment, i.e., horizontally, whilst moving towards the centre of the air gap in a parallel direction, i.e., vertically, eventually dissipating into the surrounding air over tens of milliseconds before disappearing completely within 100 ms. In this respect, the Schlieren structures can be considered a longer-lived imprint of the short-lived streamers within the air.

The perpendicular expansion of the Schlieren structures can be tracked from one image to the next by measuring the diameter of the more prominent filaments at the same point in each image. Similarly, the movement of brighter regions towards the centre of the air gap can be tracked by measuring how far the centre point of the region has moved away from its starting position in the first image. Plots of both the perpendicular expansion and movement towards the centre are shown in Figure 5.

### **Schlieren structures during electrical breakdowns**

During the experiments, several electrical breakdown events were captured by both cameras. Such events emit a large amount of light within the first frame which saturated both cameras in the first set of experiments. However, during the second set of experiments, the Schlieren camera was able to capture data following the breakdown, as demonstrated in Figures 6 and 7. In most cases, typically when the breakdown occurs to one side of the electrode, the Schlieren structures connecting the electrode to the ground plane are still visible after the high voltage impulse has diminished, as seen in previous experiments when no breakdown occurred. This would indicate that, although many filaments existed, the conditions were right for one to become a leader, heating the air and increasing the conductivity to a point where a current could flow between the electrode and ground plane. The Schlieren imprint then remains in place until either the turbulent air of the breakdown disrupts it, or it dissipates into the surrounding air.

## Discussion

The results of the experiments described in this paper highlight a more intricate streamer formation process for high voltage impulses across short gaps, such as those representing the high voltage component of lightning, building on existing theory. This does not necessarily apply to other electrical applications, such as alternating and direct current. It is important to note that the steps described by the existing theory, as shown in Fig. 1, have been observed. The electrode geometry has also affected the streamer formation as expected, with the point electrode producing a smaller number of more direct streamer filaments and the flat and round geometries producing a larger spread of streamer filaments.

Figure 2 demonstrates that the visible light emissions and the Schlieren structures coincide along the same streamer filaments which branch outwards from the electrodes. In the case of negative streamers, separate distinct areas of more intense light emissions are seen within the air gap. However, the light images show filaments connecting the energised electrode and the ground plane whereas the Schlieren images only show filaments around the high voltage electrode. Comparing the two, the Schlieren structures coincides with the brightest parts of the filaments around the electrode where the field is more intense, indicating that the ionisation process has started to cause localised heating resulting in a change of air density. However, Figs. 3 and 4 demonstrate that, although the ionisation and recombination process has largely diminished due to the rapidly decreasing high electric field in the microsecond timeframe, the Schlieren structures continue to develop along the filaments into the millisecond timeframe. Many of these filaments connect the high voltage electrode and ground plane reminiscent of the light images in Fig. 2, with brighter regions at both the high voltage electrode and ground plane. This mechanism continues even after an electrical breakdown has occurred along other filaments, with the Schlieren structures remaining in place unless disturbed by the neighbouring turbulent air, as demonstrated in Figs. 6 and 7.

The Schlieren structures develop in a timeframe when no high voltage field is present, hence no energy to contribute towards localised heating and subsequent change of density. Further, multiple filaments bridge the gap between the electrode and ground plane with no flow of charge. It is hypothesised that, when the high voltage impulse is applied, heavier local ions are attracted towards the charged filaments and move

slowly towards them. Once the field has diminished, their momentum continues to carry them into the filament. A higher concentration of ions and electrons remaining within the filaments, whether natural or because they have not recombined, may also attract other local ions and electrons into the region and may collide with neutral molecules also moving them towards the filament. This would result in a temporary region of differing density around where the charged filaments had existed. The result is a relatively longer-term Schlieren imprint of the short-lived streamers. After around 1 ms, this process is overcome by thermal diffusion with the perpendicular expansion of the filaments being largely consistent with an exponential decay until they disappear into the surrounding air, as shown in Fig. 5. This is consistent with any such gas density differential reaching an equilibrium. However, the more concentrated regions near the electrode and ground plane move towards each other at a much faster rate suggesting an additional mechanism, as also demonstrated in Fig. 5. This is thought to be due to space charge effects, with the ions and electrons gathered at opposing sides of the electrode and ground plane configuration having sufficient charge to pull the regions towards each. Like the filaments, these are also ultimately overcome by thermal diffusion before disappearing into the surrounding environment. It is noted that this mechanism is like, but not the same as, a coronal/electric wind [13] which is observed during the application of a constant voltage.

The description given in the introduction of streamer formation between, for example, an energised electrode and a ground plane separated by a small air gap during the application of a high voltage impulse as illustrated in Fig. 1, can hence be modified to the following, as illustrated in Fig. 7. An applied field ionises the air creating an avalanche of accelerated free electrons which emit light, either by recombination or Bremsstrahlung radiation. For positive streamers, filament structures extend out from the electrode whereas, for negative streamers, distinct regions are formed within the air gap. In both cases, several filaments which connect the electrode and ground plane are formed as the ionisation process intensifies. The charged filaments attract local ions towards them which, even after the high voltage field has diminished and the ions have recombined, continue to move into the filaments in the millisecond timeframe creating a Schlieren imprint, whilst regions of opposing space charge at the energised electrode and ground plane start to move towards each other. The imprint and space charge regions are eventually overcome by thermal diffusion as they equalise with the surrounding air. However, during the application of the high voltage field, one of the filaments may reach a critical electron density whilst the high voltage impulse field is applied causing rapid heating, decreasing filament density, and increasing conductivity resulting in an electrical breakdown, with the schlieren imprint remaining until it dissipates or is disturbed by the turbulent air from the neighbouring breakdown.

## Method

### Experimental setup

The experimental setup is illustrated in Fig. 9 and consisted of two major components: a high voltage system and a camera system. The high voltage system included a commercially available high voltage generator capable of producing a 1.2/50  $\mu\text{s}$  waveform which complies with BS60060-1 standard [12] with

a step up/down resolution of 0.4 kV, connected directly to one of three high voltage electrodes. Each electrode was manufactured from a 1 cm diameter aluminium rod machined to produce a round, flat or pointed end. The electrode was clamped into place 4 cm above a 50 x 50 cm flat aluminium plate which was connected to ground. The voltage was measured from a capacitive voltage divider positioned between the high voltage generator and electrode. The current was measured by a current transducer positioned around the cable connecting the ground plane to ground. The oscilloscopes used to record the voltage and current waveforms were triggered from the direct measurement of the voltage rise. The camera system consisted of a pair of synchronised commercially available high-speed cameras and lenses positioned such that they had a clear view of the electrode setup. Both were triggered shortly beforehand in a rolling image format with internal software used to detect a change in the images to capture the event. The Schlieren camera was used in conjunction with a bright LED light source, a pair of 13 cm diameter biconvex lenses either side of the electrode arrangement, and a knife edge positioned to produce the required shading in a linear arrangement. The lenses produced parallel light between them whereas the knife edge was used to introduce shading which enhances the Schlieren effect. The light camera was offset at an angle of 20 degrees such that it had a clear view of the electrode arrangement without obstruction from the Schlieren imaging setup. Later, when carrying out more detailed Schlieren type studies, only the Schlieren camera was used and its settings were adjusted to give a more magnified view with an extended run time. The cameras were run at 21,000 fps giving a frame-length of 47.62  $\mu$ s, with a 10  $\mu$ s error between them. All experiments were conducted in a large electrically isolated room and were remotely controlled.

## Image analysis

In all cases and for both cameras, the image taken immediately before a streamer image was captured and used as a dark image. The dark image was subtracted from all following images to enhance detail which may not have otherwise been easily visible whilst removing static artefacts present in both images, which were largely found to be a result of the bright LED light source. This technique is the same as given in [8]. The brightness of the images was then increased by 40%, where needed, to emphasise detail for print and display. The perpendicular expansion was measured across pixels which were greater than the background level, whereas the movement of brighter regions was measured by estimating the centre of the region and how far it had moved from its initial position. These steps are demonstrated in Fig. 10.

## Declarations

### Acknowledgements

The authors gratefully acknowledge the financial support provided by the EU/Welsh Government funded project, FLEXIS.

### Affiliations

D. Mitchard, P. Widger and A. Haddad

## Author Contributions

D. M. conceived the original idea. D. M and P. W. carried out the experiments and analysed the data. D. M wrote the manuscript with support from P. W. and M. H.

## Competing Interests

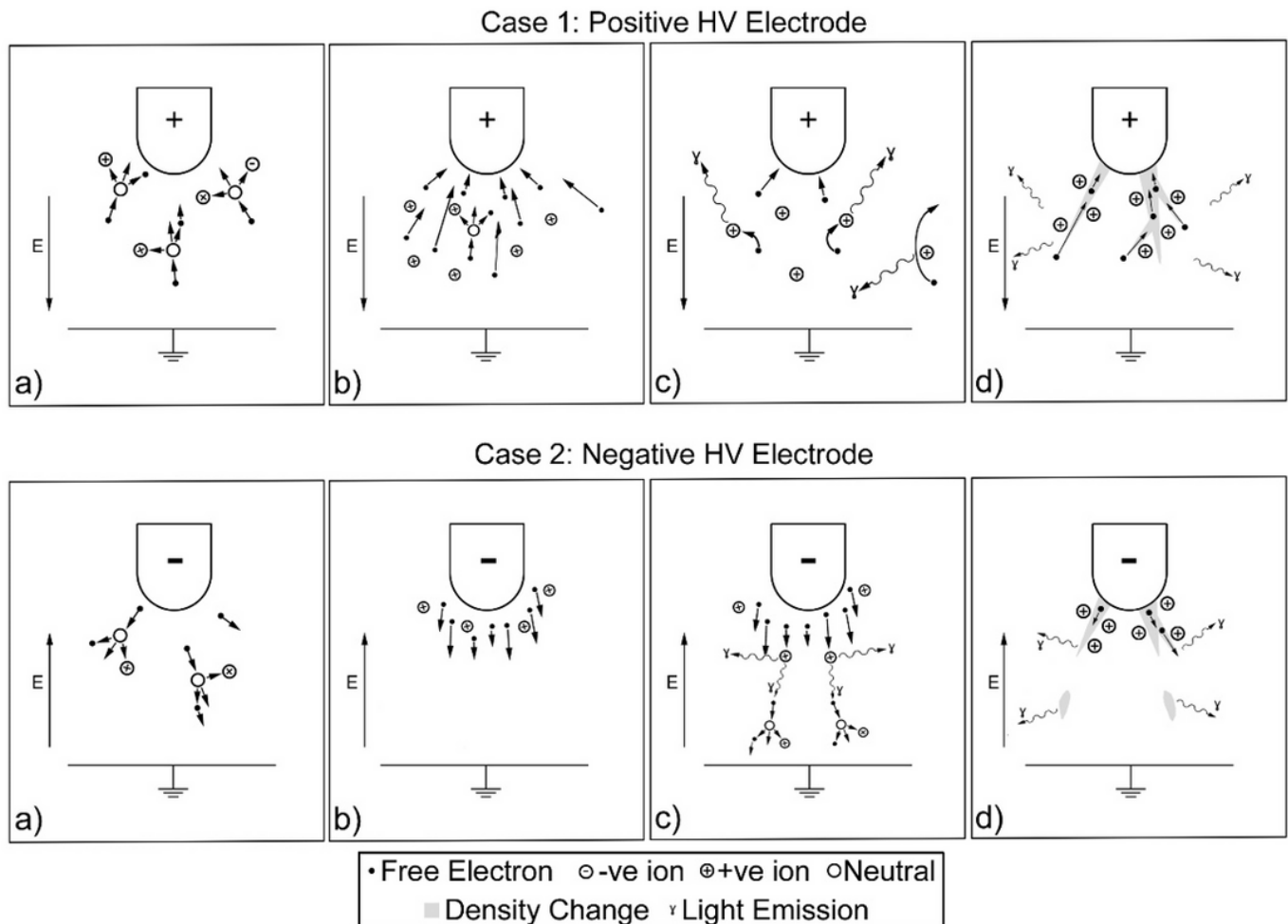
The authors declare that there are no competing interests.

## References

1. Townsend, J. S. The conductivity produced in gases by the motion of negatively charged ions, *Nature* **62** 340–341 (1900)
2. Meek, J. M. A theory of spark discharge, *Physical Review* **57** 722 (1940)
3. Allen, N. L. Mechanisms of air breakdown, in *Advances in High Voltage Engineering* edited by Haddad, A. & Warne, D. (The Institute of Engineering and Technology, London, 2004)
4. Waters, R. T. Diagnostic techniques for is charges and plasmas, in *Electrical Breakdown and Discharge Gases, NATO Advanced Science Institutes Series, Volume 89b* edited by Kunhardt, E. E. & Luessen, L. H. (Plenum Press, New York, 1983)
5. Nijdam, S., Geurts, C. G. C., van Veldhuizen, E. M. & Ebert, U. Reconnection and merging of positive streamers in air, *Journal of Physics D: Applied Physics* **42** 045201 (2009)
6. Nijdam, S., van de Wetering, F. M. J. H., Blanc, R., van Veldhuizen, E. M. & Ebert, U. Probing photo-ionisation: experiments on positive streamers in pure gases and mixtures, *Journal of Physics D: Applied Physics* **43** 14 (2010)
7. Trienekens, J. M., Nijdam & S., Ebert, U. Stroboscopic images of streamers through air and over dielectric surfaces, *IEEE Transactions on Plasma Science* **42** 10 (2014)
8. Widger, P., Hills, M. & Mitchard, D. *Schlieren Images of Negative Streamer and Leader Formations in CO<sub>2</sub> and a CF<sub>3</sub>I-CO<sub>2</sub> Electronegative Gas Mixture*, MDPI Applied Sciences **10** 22 (2020) <https://doi.org/10.3390/app10228006>

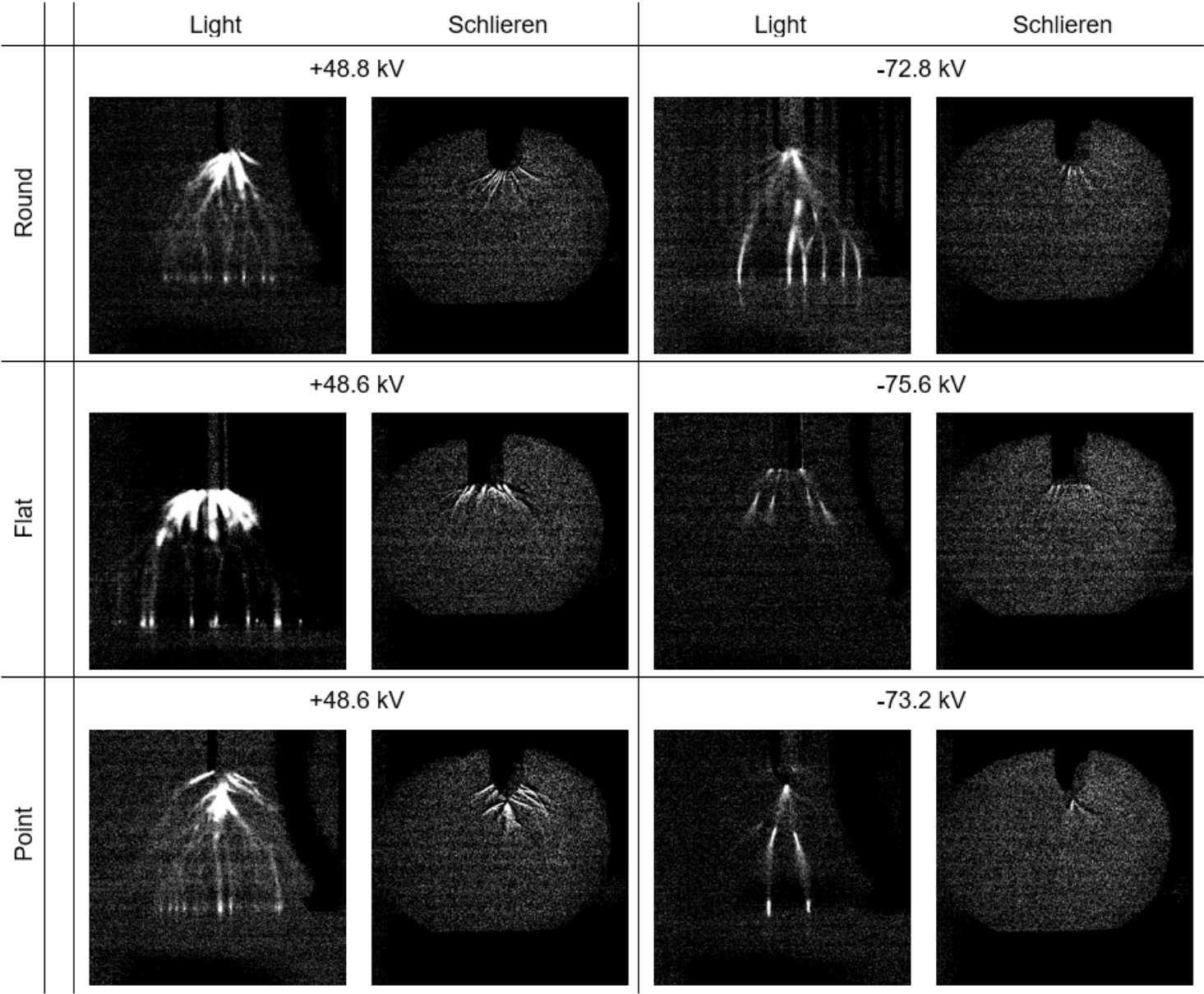
9. Schneider, K. H. *Positive Discharges in Long Air Gaps at Les Renardières – 1975 Results and Conclusions*, ELT\_053\_2, Electra. Available online: [https://e-cigre.org/publication/ELT\\_053\\_2-positive-discharges-in-longair-gaps-at-les-renardieres-1975-results-and-conclusions](https://e-cigre.org/publication/ELT_053_2-positive-discharges-in-longair-gaps-at-les-renardieres-1975-results-and-conclusions) (1975).
10. Schneider, K. H. *Negative Discharges in Long Air Gaps at Les Renardières—1978 Results*, ELT\_074 – 3, Electra. Available online: [https://e-cigre.org/publication/ELT\\_074\\_3-negative-discharges-in-long-air-gaps-at-lesrenardieres-1978-results](https://e-cigre.org/publication/ELT_074_3-negative-discharges-in-long-air-gaps-at-lesrenardieres-1978-results) (1978).
11. Gallimberti, I., Bacchiega, G., Bondiou-Clergerie, A., Lalande, P. *The Physics of Thundercloud and lightning discharge—Fundamental processes in long air gap discharges*. Comptes Rendus Phys. 3, 1335–1359 (2002).
12. IEC 60060-1 High Voltage Test Techniques Part 1: General Definitions and Test Requirements (IEC, 2010)
13. Gouridine, M. C., Division of Engineering: Engineering Aspects of Electro-Gas-Dynamics. Transaction of the New York Academy of Sciences, 1968

## Figures



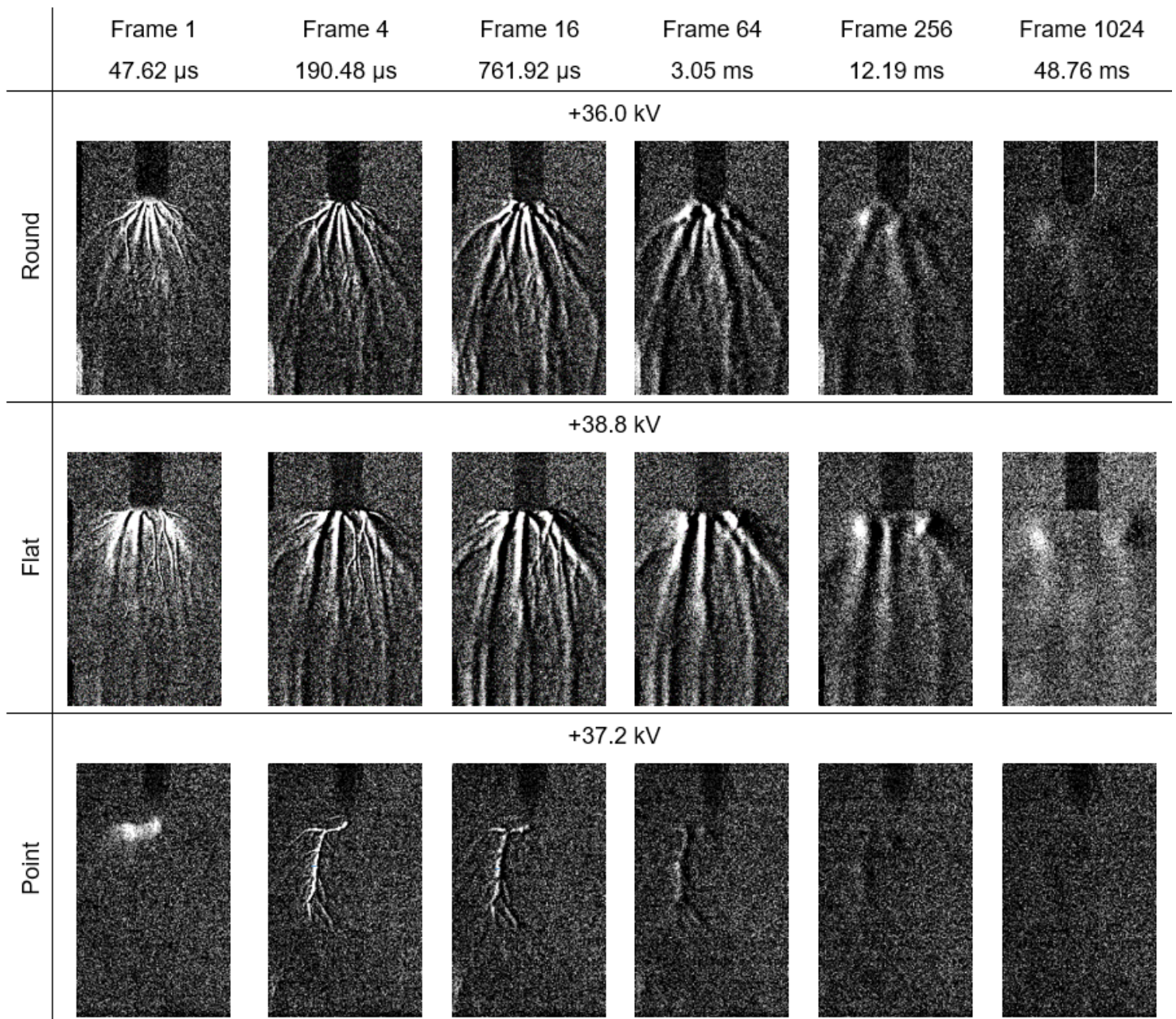
**Figure 1**

The formation of positive and negative streamers between a high voltage electrode and ground plane across an air gap. (a) Free electrons accelerate towards/away from the electrode creating ions, (b) electrons accelerate and collide with more molecules creating an avalanche, (c) recombination of ions and Bremsstrahlung radiation emitting light and (d) formation of filament structures [3].



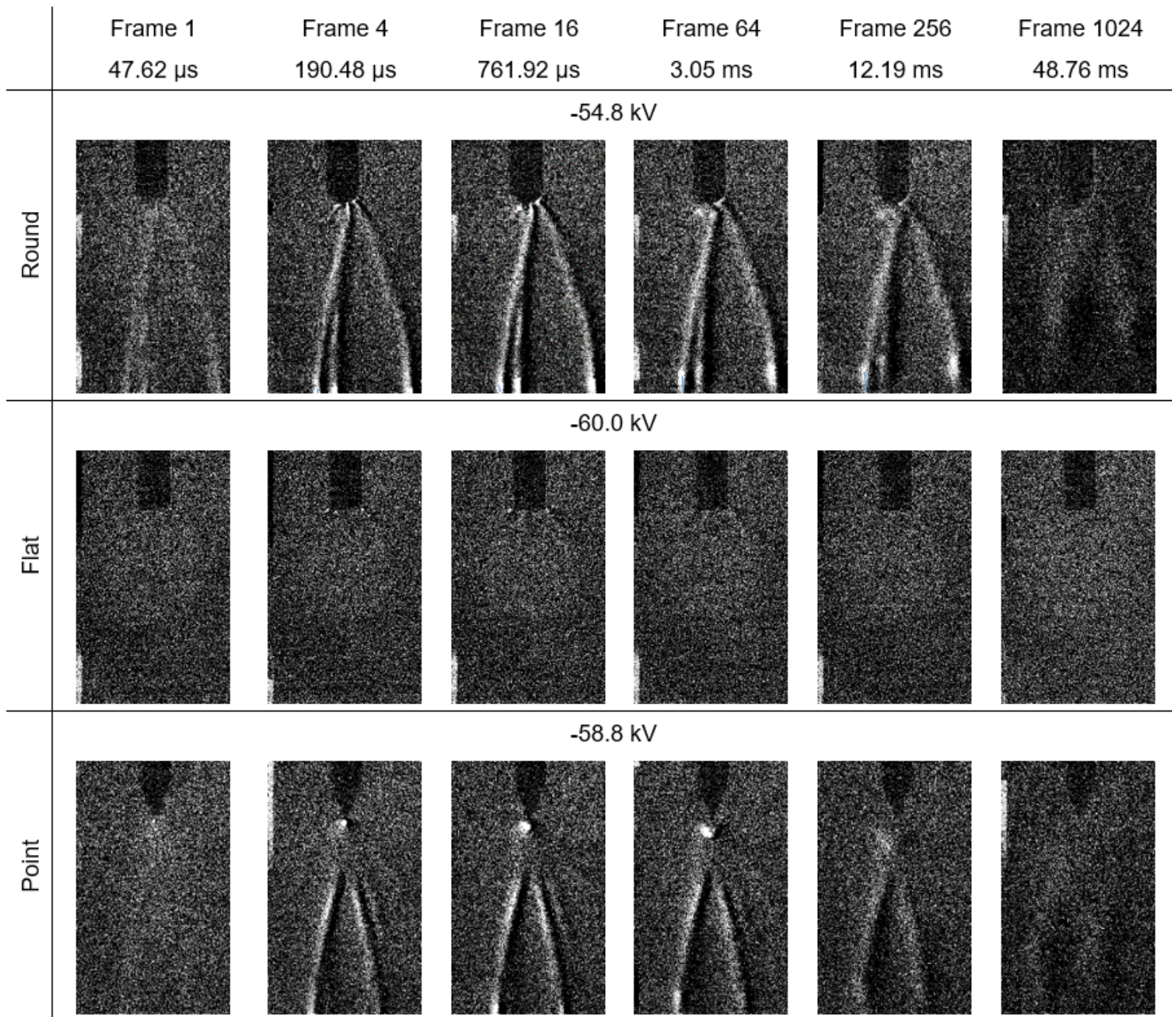
**Figure 2**

Light emissions and Schlieren structures for positive and negative high voltage impulses applied to round, flat and point electrodes opposite a ground plane. The applied peak voltage impulse for each, which were all 0.4 kV below the experimentally determined breakdown voltages, are displayed above each pair of images. The images have been enhanced by image subtraction and 40% brightness increase for clarity.



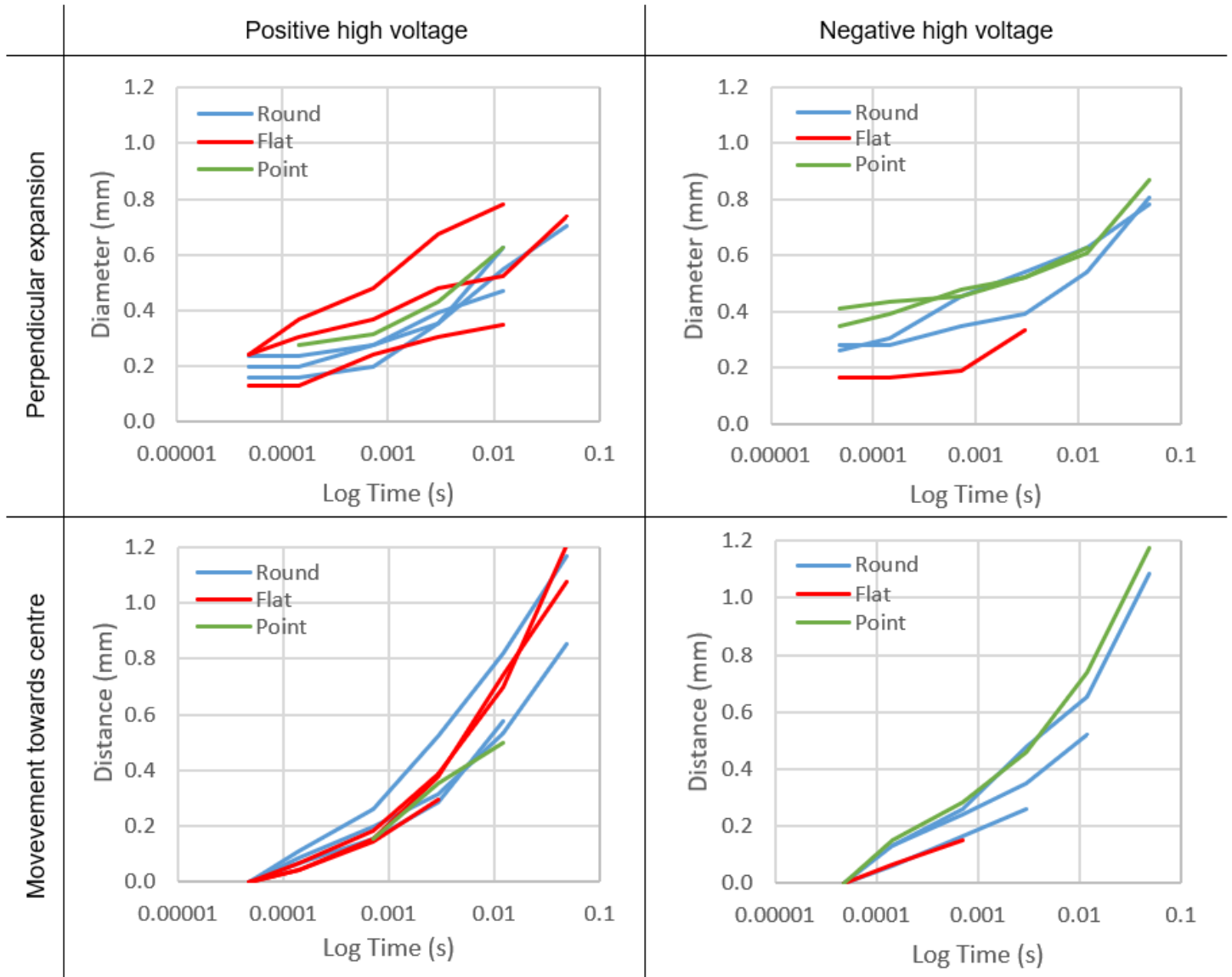
**Figure 3**

Schlieren structures over time for a positive high voltage impulse applied to round, flat and point electrodes opposite a ground plane. The applied peak voltage impulse for each, which were all 0.4 kV below the experimentally determined breakdown voltages, are displayed above each image. The images have been enhanced by image subtraction and 40% brightness increase for clarity.



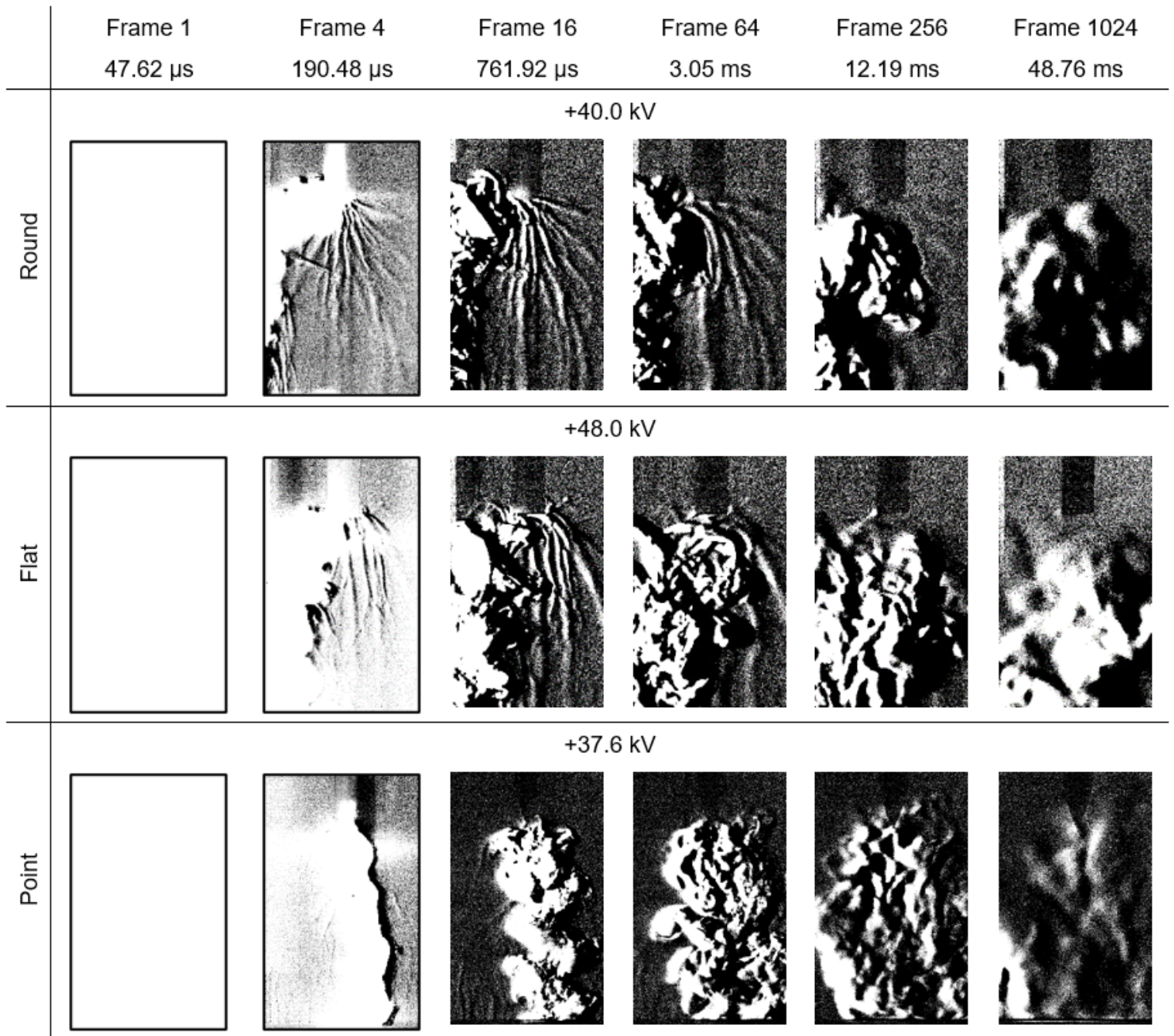
**Figure 4**

Schlieren structures over time for a negative high voltage impulse applied to round, flat and point electrodes opposite a ground plane. The applied peak voltage impulse for each, which were all 0.4 kV below the experimentally determined breakdown voltages, are displayed above each image. Note that for the flat electrode, Schlieren does exist but is only barely visible near the corners of the electrode. The images have been enhanced by image subtraction and 40% brightness increase for clarity.



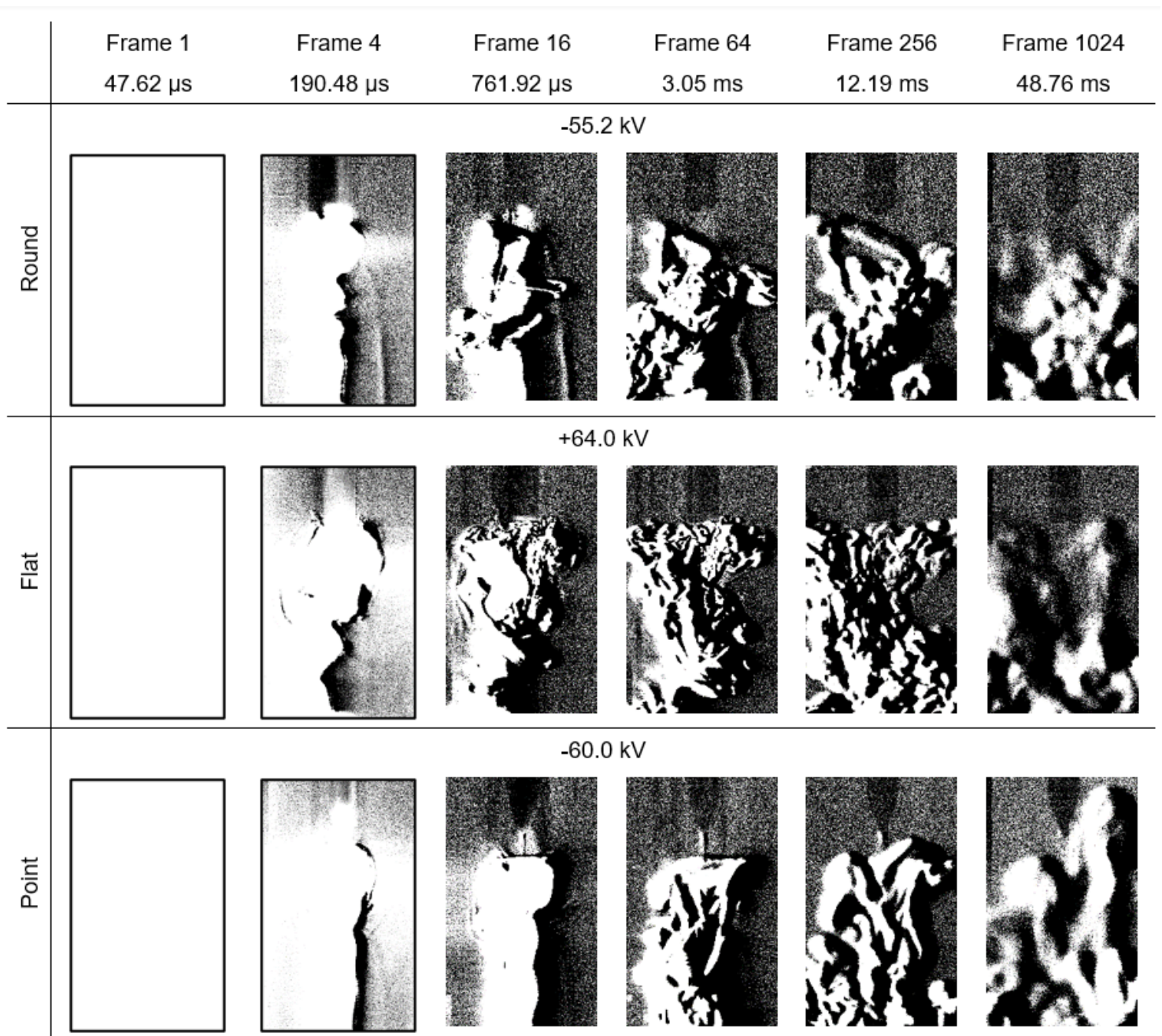
**Figure 5**

The perpendicular expansion of the filaments and movement of brighter regions towards the centre of the air gap of the schlieren structures over time for round, flat and point electrodes, as measured from the data presented in Figures 3 and 4.



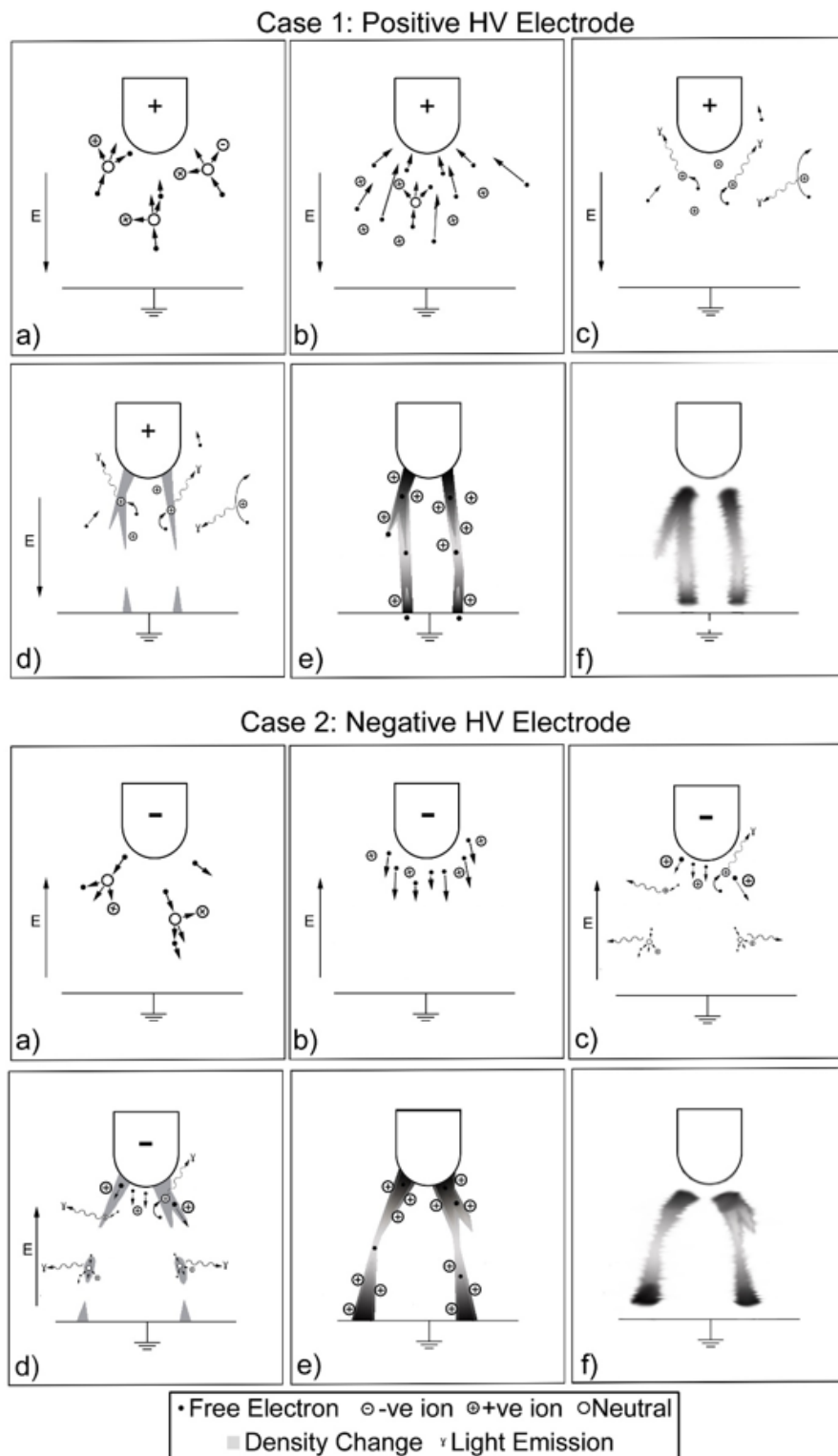
**Figure 6**

Schlieren structures over time for a positive high voltage impulse applied to round, flat and point electrodes opposite a ground plane when an electrical breakdown has occurred. The first images in each case are saturated. These images have been enhanced by image subtraction and, from frame 16 onwards, a 40% increase in brightness for clarity.



**Figure 7**

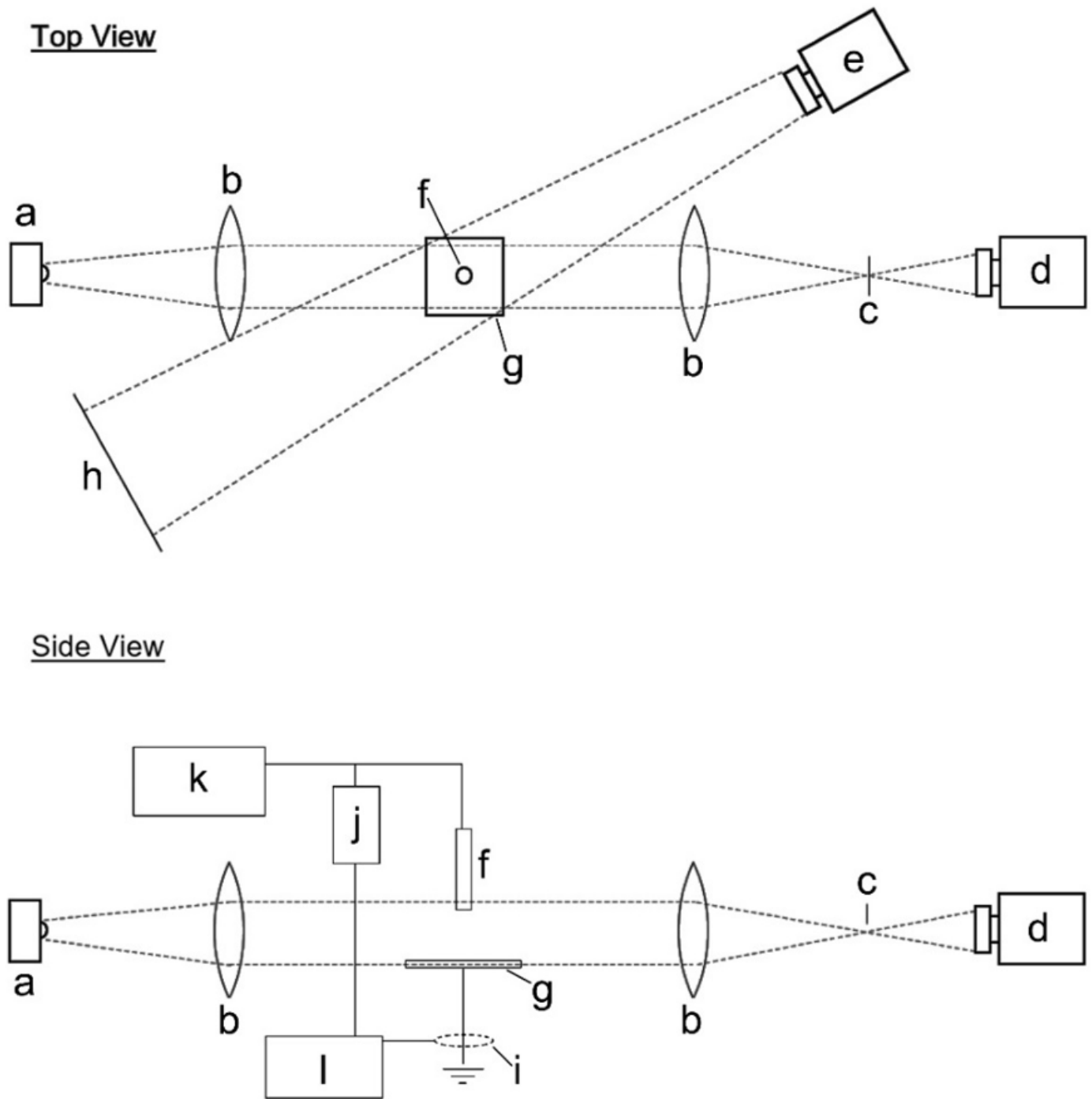
Schlieren structures over time for a negative high voltage impulse applied to round, flat and point electrodes opposite a ground plane when an electrical breakdown has occurred. The first images in each case are saturated. These images have been enhanced by image subtraction and, from frame 16 onwards, a 40% increase in brightness for clarity.



**Figure 8**

Proposed mechanism for the formation of positive and negative streamers between a pulsed high voltage electrode and ground plane across an air gap. (a) free electrons accelerated towards/away from the electrode creating ions, (b) electrons accelerate and collide with more molecules creating an avalanche, (c) recombination of ions and Bremsstrahlung radiation emitting light along forming filament structures, (d) increase in density around electrode, ground plane and, in the case of negative fields, also

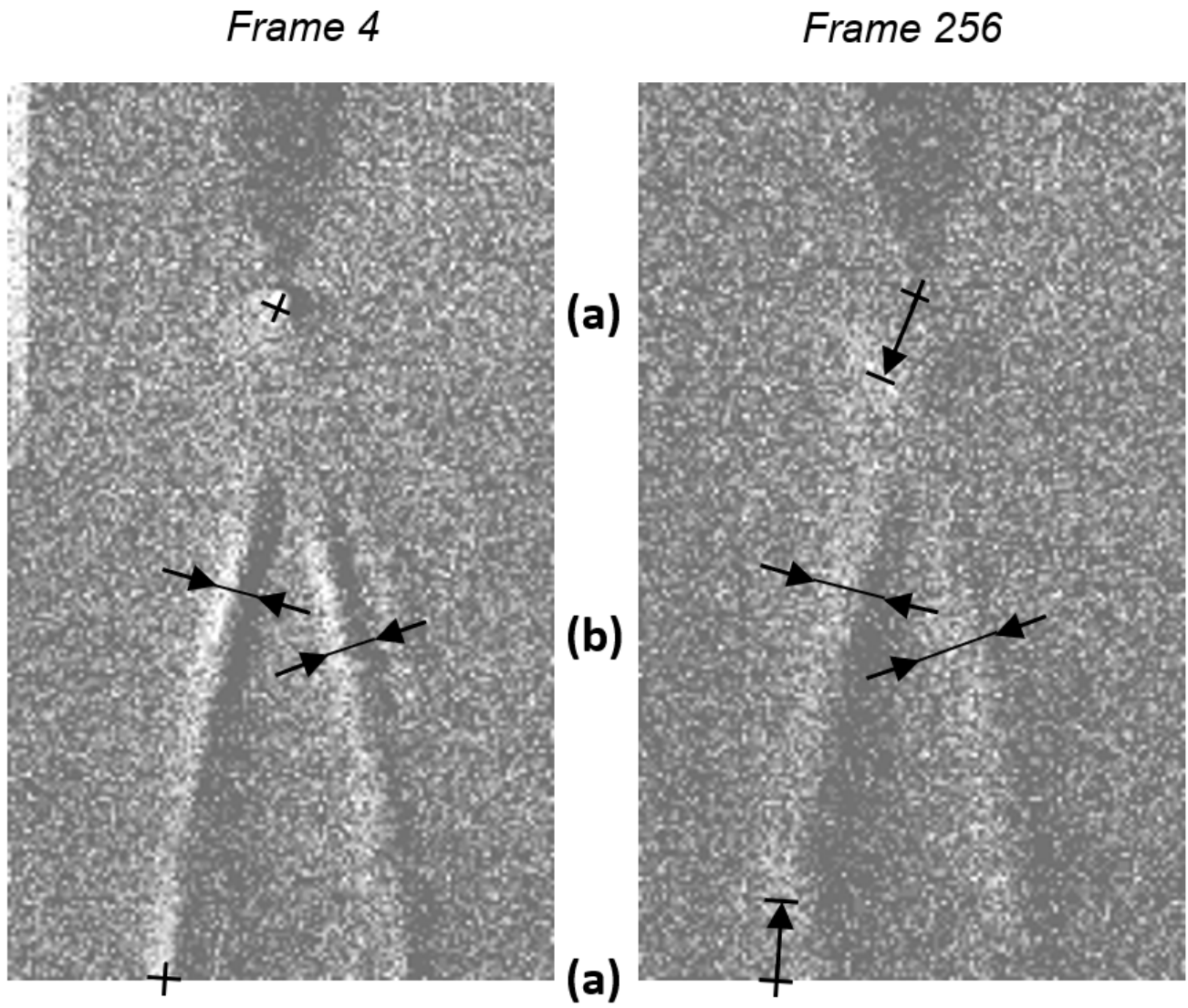
in the space between, (e) once the field has diminished, the density continues to increase along the filaments creating a schlieren imprint and (f) opposing regions of space charge move towards each other while the Schlieren imprint then diffuses into the surrounding air.



**Figure 9**

An illustration of the experimental setup. The Schlieren system consists of the (a) bright LED light source, (b) two biconvex lenses, (c) knife edge, (d) Schlieren camera, (e) visible light camera and (h) a flat plane

background. The high voltage system consists of the (f) electrode, (g) ground plane, (i) current transducer, (j) voltage divider, (k) high voltage generator, and (l) oscilloscope for reading current and voltage.



**Figure 10**

An illustration of (a) the measurement of the movement of brighter regions near the electrode and ground plane towards the middle of the air gap and (b) the perpendicular expansion of the filaments.