

Induced neural stem cell grafts exert neuroprotection through an interaction between Crry and Akt in a mouse model of closed head injury

Mou Gao

Chinese PLA General Hospital

Qin Dong

Beijing Fuxing Hospital

Wenjia Wang

Chinese PLA General Hospital

Zhijun Yang

Chinese PLA General Hospital

Yingzhou Lu

Beijing Fuxing Hospital

Boyun Ding

PLA Army General Hospital

Lihua Chen

Sichuan Academy of Medical Sciences and Sichuan People's Hospital

Jianning Zhang

Chinese PLA General Hospital

Ruxiang Xu (✉ jzprofxu@126.com)

Sichuan Academy of Medical Sciences and Sichuan People's Hospital

Research

Keywords: induced neural stem cell, Crry, closed head injury, transplantation, complement

Posted Date: May 21st, 2020

DOI: <https://doi.org/10.21203/rs.3.rs-29142/v1>

License: © ⓘ This work is licensed under a Creative Commons Attribution 4.0 International License.

[Read Full License](#)

Version of Record: A version of this preprint was published on February 12th, 2021. See the published version at <https://doi.org/10.1186/s13287-021-02186-z>.

Abstract

Background

Recently, growing evidence has indicated an important role of the complement system, a crucial component of immunity, in mediating neuroinflammation and promoting neuronal apoptosis following closed head injury (CHI). We previously reported that transplanted induced neural stem cells (iNSCs) pre-treated with CHI mouse serum could enhance complement receptor type 1-related protein y (Crry) expression and ameliorate complement-mediated damage in mouse CHI models. However, the mechanism underlying the elevated levels of Crry expression remains elusive.

Methods

CHI models were established using a standardized weight-drop device and CHI mouse serum was collected at 12 h post-trauma. Complement deposition assay, Akt inhibition assay, cell viability assay, functional assay, cell transplantation, morphological and molecular biological analyses were performed.

Results

In the present study, we observed dramatic increases in the levels of Crry expression and Akt activation in iNSCs receiving CHI mouse serum treatment. Remarkably, Akt inhibition led to the reduction of Crry expression in iNSCs. Intriguingly, the treatment of iNSC-derived neurons with recombinant complement receptor 2-conjugated Crry (CR2-Crry), which inhibits all complement pathways, substantially enhanced Crry expression and Akt activation in neurons after CHI mouse serum treatment. In subsequent *in vitro* experiments of pre-treatment of iNSCs with CR2-Crry, we observed significant increases in the levels of Crry expression and Akt activation in iNSCs, iNSC-derived astrocytes and neurons post-treatment with CHI mouse serum. Additionally, an *in vivo* study showed that intracerebral-transplanted iNSCs pre-treated with CR2-Crry markedly enhanced Crry expression in neurons and protected neurons from complement-dependent damage in the brains of CHI mice.

Conclusions

In summary, iNSCs receiving CR2-Crry pre-treatment increased the levels of Crry expression in iNSCs, iNSC-derived astrocytes and neurons and attenuated complement-mediated injury following CHI.

Introduction

Closed head injury (CHI) is regarded as a major cause of neurological disorders and impairs quality of life and creates an enormous financial burden throughout the world.¹ Following the primary mechanical trauma, secondary injury that is mainly induced by neuroinflammation has been identified as a critical

factor in neuronal loss in the pathological process of CHI, leading to neurocognitive sequelae in patients.^{2,3} Recently, substantial evidence has revealed a pivotal role of the complement system in mediating neuroinflammation and promoting neuronal injury in response to CHI.^{4,5} For instance, the complement activation products C3a, C3d, C5a and C5b-9 (membrane attack complexes), which have the potential to trigger immune cell infiltration, decrease synaptic density and inhibit neuronal regeneration, are significantly increased in the brains of patients with traumatic head injury.⁶⁻⁹

Additionally, previous studies have shown that the modulation of complement activation post-CHI by various complement regulators such as CD59, factor H and complement receptor type 1-related protein y (Crry), which block different complement pathways, prevents ongoing neuroinflammation and neuronal damage.⁶⁻⁹ For example, inhibition of C5b-9 with recombinant complement receptor 2-conjugated CD59 (CR2-CD59) ameliorates neuropathology in a mouse model of controlled cortical impact.⁹ Moreover, the recombinant complement receptor 2-conjugated factor H (CR2-fH) protein, which inhibits the alternative complement pathway, can suppress neuroinflammation and improve neurological function in treatment of CHI.^{8,9}

Remarkably, brain cells can produce a certain amount of complement regulators to attenuate complement-mediated injury, but these complement regulators are markedly reduced in the brain after damage.¹⁰⁻¹² Furthermore, the upregulation of Crry, as shown in transgenic mice with astrocyte-targeted overexpression of Crry, can exert neuroprotective effects post-CHI.¹³ Additionally, the systemic injection of Crry-Ig, a recombinant Crry molecule, enhances neuronal survival in the mouse CHI model.¹⁴ Moreover, the administration of complement receptor 2-conjugated Crry (CR2-Crry), a recombinant fusion protein that inhibits all complement pathways, provides significant improvements in neurological functional recovery following brain damage.⁹

In recent years, accumulating evidence has suggested that engrafted induced neural stem cells (iNSCs) generated from autologous somatic cells using reprogramming technology can exert beneficial effects for neuronal replacement and play positive roles in the treatment of brain injury.^{15,16} However, some investigators have argued that implanted iNSCs rarely induce a significant number of functional mature neurons.¹⁷⁻¹⁹ There are many reasons for these discrepancies. For instance, inappropriate complement activation post-CHI, as mentioned above, may make iNSC-based therapy difficult because of the complement-mediated injury to iNSC grafts.²⁰⁻²² In contrast, we previously reported that systemically delivered iNSCs enhanced Crry expression and decreased neuronal apoptosis induced by complement activation in mouse CHI models.²³ Furthermore, the pre-treatment of iNSCs with CHI mouse serum as a source of active complement increased the levels of Crry expression in iNSC-derived astrocytes resulting in reduced complement-dependent damage and exerted neuroprotection following CHI.²⁴ However, the mechanism underlying the elevated levels of Crry expression in iNSCs and their derivatives remains poorly understood.

To clarify the mechanism of Crry expression, we performed a series of experiments and observed dramatic increases in the levels of Crry expression and Akt activation in iNSCs receiving CHI mouse serum treatment. Remarkably, Akt inhibition led to the reduction of Crry expression in iNSCs. Furthermore, after CHI mouse serum treatment, the pre-treatment of iNSCs with CHI mouse serum markedly enhanced Crry expression and Akt activation in iNSC-derived astrocytes, whereas it did not affect the levels of Crry expression or Akt activation in iNSC-derived neurons. Interestingly, we detected elevated levels of Crry expression and Akt activation in iNSC-derived neurons treated with astrocyte culture supernatants. Moreover, the treatment of iNSC-derived neurons with CR2-Crry substantially enhanced Crry expression and Akt activation in neurons following CHI mouse serum treatment. In subsequent *in vitro* experiments of pre-treatment of iNSCs with CR2-Crry, we observed significant increases in the levels of Crry expression and Akt activation in iNSCs, iNSC-derived astrocytes and neurons post-treatment with CHI mouse serum. Additionally, an *in vivo* study showed that intracerebral-transplanted iNSCs, pre-treated with CR2-Crry, markedly enhanced Crry expression in neurons and protected neurons from complement-mediated damage in the brains of CHI mice.

Materials And Methods

CHI models

All experimental procedures were in compliance with the Guide for the Care and Use of Laboratory Animals published by the National Institutes of Health (NIH) and approved by the Committee on the Ethics of Animal Experiments of the General Hospital of Beijing Military Region, P.L.A (Permit Number: 2016-040). CHI models were established and evaluated as previously reported.²⁵ Detailed methods were provided in Supplementary Methods S1.

Serum Collection

CHI mouse serum was collected at 12 h post-trauma as previously described.²⁴ Detailed methods were provided in Supplementary Methods S2.

Cell Cultures And Complement Deposition Assay

Cell cultures and complement deposition assay were performed as previously described.²⁴ Detailed methods were provided in Supplementary Methods S3.

Akt Inhibition Assay

iNSCs were randomly divided into three groups: the PBS, CHI and CHI + LY294002 groups. Briefly, iNSCs were digested with Accutase (Invitrogen, Carlsbad, CA, USA) and washed with PBS (Invitrogen). The

number of living cells was counted by trypan blue (Sigma-Aldrich, St. Louis, MO, USA) exclusion, and the density of the single-cell suspension was adjusted accordingly. Next, iNSCs were separately resuspended in 250 µl of PBS or CHI mouse serum in the presence or absence of LY294002 (20 µM, CST, Beverly, MA, USA), and plated onto 24-well plates (1×10^5 cells per well) for 45 min at 37 °C. The cells were subsequently washed and cultured with iNSCcm for 3 days (Supplementary Methods S3). After passaging, the cells from the three groups were separately treated with CHI mouse serum for 45 min at 37 °C. Afterwards, the cells were collected and thoroughly washed.

Cell Differentiation And MACS

Cell differentiation and MACS were performed as previously described.²⁴ Detailed methods were provided in Supplementary Methods S4.

Flow Cytometry

Flow cytometry was performed as previously described.²⁴ Detailed methods were provided in Supplementary Methods S5.

Cell Viability Assay

Cell viability assay was performed as previously described.²⁴ Detailed methods were provided in Supplementary Methods S6.

Functional Assay

Functional assay was performed as previously described.²⁴ Detailed methods were provided in Supplementary Methods S7.

CR2-Crry Treatment

CR2-Crry was produced and purified as previously described.²⁶ INSC-derived neurons were randomly divided into three groups: the PBS, CHI and CHI + CR2-Crry groups. Briefly, neurons derived from iNSCs without any pre-treatment were separately resuspended in 250 µl of PBS or CHI mouse serum in the presence or absence of CR2-Crry (40 nM), and plated onto 24-well plates (1×10^5 cells per well) for 45 min at 37 °C. Subsequently, the cells were washed and cultured with DMEM/F12 (1:1).

Cell Transplantation

Cell transplantation was performed as previously described.²⁴ Detailed methods were provided in Supplementary Methods S8.

Morphological Analysis

Morphological analysis was performed as previously described.²⁴ Detailed methods were provided in Supplementary Methods S9.

TUNEL Staining

TUNEL staining was performed as previously described.²⁴ Detailed methods were provided in Supplementary Methods S10.

RT-QPCR Assay

RT-QPCR assay was performed as previously described.²³ Detailed methods were provided in Supplementary Methods S11. The sequences of the PCR primer pairs used in this study were reported previously.^{27–29}

Western Blot Analysis

Western blot analysis was performed as previously described.²⁴ Detailed methods were provided in Supplementary Methods S12.

Statistical analysis

The SPSS17.0 statistical software package was used for statistical analysis. Data were presented as mean \pm standard deviation (SD). Student's *t*-test and One-way ANOVA were conducted to determine statistical significance. A $P < 0.05$ was considered to be significant.

Results

CHI mouse serum pre-treatment led to Akt activation in iNSCs

After early CHI mouse serum treatment, we observed a dramatic increase in Crry expression in iNSCs.^{23,24} To explore the mechanism underlying this effect, we used RT-QPCR to determine the expression of the *Erk*, *P38*, *Jnk* and *Akt* genes in iNSCs among the PBS (iNSCs receiving PBS pre-treatment), HI-CHI (iNSCs receiving heat-inactivated CHI mouse serum pre-treatment), and CHI (iNSCs receiving CHI mouse serum

pre-treatment) groups following treatment with CHI mouse serum (Fig. 1a-d). The levels of the *Erk*, *P38* and *Jnk* genes in iNSCs were not significantly different among the three groups. However, *Akt* levels in iNSCs were substantially higher in the CHI group than in the other two groups ($n = 3/\text{group}$, $P < 0.05$).

Next, we performed a western blot analysis to detect the protein expression levels of p-Akt and Akt in iNSCs among the three groups after CHI mouse serum treatment (Fig. 1e-h). The levels of p-Akt, Akt and p-Akt/Akt in iNSCs were not significantly different between the PBS and HI-CHI groups. However, p-Akt, Akt and p-Akt/Akt levels in iNSCs of the CHI group were markedly higher than those in the other two groups ($n = 6/\text{group}$, $P < 0.05$). These data showed that the pre-treatment of iNSCs with CHI mouse serum led to Akt activation in iNSCs.

Akt inhibition reduced Crry expression in iNSCs pre-treated with CHI mouse serum

To examine the role of Akt signalling in mediating the immunoregulatory effect of iNSCs on complement activation, we utilized the Akt inhibitor LY294002 to pre-treat iNSCs (Fig. 2). Using western blot analysis, we observed that p-Akt, Akt and p-Akt/Akt levels in iNSCs of the CHI + LY294002 (iNSCs receiving CHI mouse serum and LY294002 pre-treatment) group were significantly higher than those in the PBS (iNSCs receiving PBS pre-treatment) group but substantially lower than those in the CHI (iNSCs receiving CHI mouse serum pre-treatment) group following treatment with CHI mouse serum ($n = 6/\text{group}$, $P < 0.05$). Furthermore, Crry levels in iNSCs of the CHI + LY294002 group were markedly higher than those in the PBS group but significantly lower than those in the CHI group after CHI mouse serum treatment ($n = 6/\text{group}$, $P < 0.05$). In contrast, the levels of C3d, C9 and active Caspase-3 in iNSCs of the CHI + LY294002 group were substantially lower than those in the PBS group but markedly higher than those in the CHI group following treatment with CHI mouse serum ($n = 6/\text{group}$, $P < 0.05$). These findings implied that the expression of Crry in iNSCs was positively associated with the level of Akt activation in iNSCs. Moreover, Akt inhibition clearly diminished the effect of the pre-treatment of iNSCs with CHI mouse serum on Crry expression in iNSCs. Additionally, the role of Crry in the reduction of complement-mediated injury to iNSCs was significantly attenuated by Akt inhibition.

Crry expression and Akt activation in astrocytes and neurons derived from iNSCs receiving CHI mouse serum pre-treatment

To evaluate the levels of Crry expression and Akt activation in iNSC-derived astrocytes, we used RT-QPCR and observed no significant differences in the levels of the *Crry* or *Akt* genes in astrocytes between the PBS (iNSCs receiving PBS pre-treatment) and HI-CHI (iNSCs receiving HI-CHI mouse serum pre-treatment) groups after CHI mouse serum treatment (Fig. 3a and b). In contrast, the levels of the *Crry* and *Akt* genes in astrocytes were substantially higher in the CHI (iNSCs receiving CHI mouse serum pre-treatment) group compared to the other two groups ($n = 3/\text{group}$, $P < 0.05$). Supporting these findings, a western blot analysis showed that the Crry, p-Akt, Akt and p-Akt/Akt levels in astrocytes between the PBS and HI-CHI groups were almost identical, whereas the levels of Crry, p-Akt, Akt and p-Akt/Akt in astrocytes of the CHI group were markedly higher than those in the other two groups ($n = 6/\text{group}$, $P < 0.05$) (Fig. 3c-g). These

results indicated that the pre-treatment of iNSCs with CHI mouse serum enhanced Crry expression and Akt activation in iNSC-derived astrocytes.

Next, to detect Crry expression and Akt activation levels in iNSC-derived neurons, we utilized RT-QPCR and observed no significant differences in the levels of the *Crry* or *Akt* genes in neurons among the three groups after CHI mouse serum treatment (Fig. 3h and i). Furthermore, a western blot analysis also revealed that the Crry, p-Akt, Akt and p-Akt/Akt levels in neurons among the three groups were almost identical (Fig. 3j-n). These data suggested that the pre-treatment of iNSCs with CHI mouse serum did not affect the levels of Crry expression or Akt activation in iNSC-derived neurons.

Enhanced levels of Crry expression and Akt activation in iNSC-derived neurons treated with astrocyte culture supernatants

We previously reported that astrocytes derived from iNSCs pre-treated with CHI mouse serum could reduce the numbers of apoptotic neurons via Crry expression following CHI mouse serum treatment.²⁴ To further study the mechanism underlying the neuroprotection mediated by astrocytes, we performed a functional assay and observed no significant differences in the levels of the *Crry* or *Akt* genes in neurons among the i (CHI mouse serum diluted in DMEM/F12), iii (CHI mouse serum diluted in DMEM/F12 containing purified rat anti-mouse Crry antibody), and iv (CHI mouse serum diluted in the astrocyte culture supernatants containing purified rat anti-mouse Crry antibody) sub-groups (Fig. 4a and b). However, the levels of the *Crry* and *Akt* genes in neurons were substantially higher in the ii (CHI mouse serum diluted in the astrocyte culture supernatants) sub-group than in the other three sub-groups ($n = 3/\text{group}$, $P < 0.05$). Using western blot analysis, we observed that the Crry, p-Akt, Akt and p-Akt/Akt levels in neurons were not significantly different among the i, iii and iv sub-groups (Fig. 4c-g). In contrast, the levels of Crry, p-Akt, Akt and p-Akt/Akt in the neurons of the ii sub-group were markedly higher than those in the other three sub-groups ($n = 6/\text{group}$, $P < 0.05$). These findings revealed that the levels of soluble Crry in astrocyte culture supernatants were positively associated with the levels of Crry expression and Akt activation in iNSC-derived neurons.

Crry expression and Akt activation in iNSC-derived neurons treated with CR2-Crry in the presence of CHI mouse serum

To explore the effect of Crry treatment on iNSC-derived neurons, we utilized RT-QPCR and observed that the levels of the *Crry* and *Akt* genes in neurons were substantially higher in the CHI (neurons receiving CHI mouse serum treatment) group than in the PBS (neurons receiving PBS treatment) group ($n = 3/\text{group}$, $P < 0.05$) (Fig. 5a and b). Moreover, the levels of the *Crry* and *Akt* genes in neurons were significantly higher in the CHI + CR2-Crry (neurons receiving CHI mouse serum and CR2-Crry treatment) group than in the other two groups ($n = 3/\text{group}$, $P < 0.05$). Additionally, a western blot analysis revealed that the C3d, C9, Crry, active Caspase-3, p-Akt, Akt and p-Akt/Akt levels were low in the neurons of the PBS group (Fig. 5c-j). However, CHI mouse serum treatment induced obvious increases in the levels of C3d, C9, Crry, active Caspase-3, p-Akt, Akt and p-Akt/Akt in the neurons of the CHI group ($n = 6/\text{group}$, $P < 0.05$). Remarkably,

the *Crry*, p-Akt, Akt and p-Akt/Akt levels in neurons were markedly higher in the CHI + CR2-Crry group than in the other two groups ($n = 6/\text{group}$, $P < 0.05$). Furthermore, the levels of C3d, C9 and active Caspase-3 in the neurons of the CHI + CR2-Crry group were substantially higher than those in the PBS group but significantly lower than those in the CHI group ($n = 6/\text{group}$, $P < 0.05$).

Subsequently, we performed immunofluorescence staining and observed that the numbers of p-Akt⁺/Crry⁺ and Akt⁺/Crry⁺ neurons were markedly higher in the CHI group than in the PBS group ($n = 6/\text{group}$, $P < 0.05$) (Fig. 6a-d). Moreover, the levels of p-Akt⁺/Crry⁺ and Akt⁺/Crry⁺ neurons were substantially higher in the CHI + CR2-Crry group than in the other two groups ($n = 6/\text{group}$, $P < 0.05$). Additionally, flow cytometry analysis demonstrated that the *Crry*, p-Akt and Akt levels in neurons were significantly higher in the CHI group than in the PBS group ($n = 3/\text{group}$, $P < 0.05$) (Fig. 6e-j). Furthermore, the levels of *Crry*, p-Akt and Akt in neurons were markedly higher in the CHI + CR2-Crry group than in the other two groups ($n = 3/\text{group}$, $P < 0.05$). Therefore, the treatment of iNSC-derived neurons with CR2-Crry clearly enhanced *Crry* expression and Akt activation in neurons following CHI mouse serum treatment. Moreover, the administration of CR2-Crry effectively reduced complement-mediated injury to neurons.

CR2-Crry pre-treatment enhanced *Crry* expression and Akt activation in iNSCs, iNSC-derived astrocytes and neurons

To evaluate the effect of CR2-Crry pre-treatment on iNSCs, we used RT-QPCR and observed that the levels of the *Crry* and *Akt* genes in iNSCs, iNSC-derived astrocytes and neurons were markedly higher in the CR2-Crry (iNSCs receiving CR2-Crry pre-treatment) group than in the PBS (iNSCs receiving PBS pre-treatment) group after CHI mouse serum treatment ($n = 3/\text{group}$, $P < 0.05$) (Supplementary Fig. 1a and b, 2a and b, and 3a and b). In support of these findings, western blot analysis indicated that the *Crry*, p-Akt, Akt and p-Akt/Akt levels in iNSCs, iNSC-derived astrocytes and neurons were substantially higher in the CR2-Crry group than in the PBS group ($n = 6/\text{group}$, $P < 0.05$) (Supplementary Fig. 1c-g, 2c-g and 3c-g). Furthermore, we performed the 3-[4, 5-dimethylthiazol-2-yl]-2, 5-diphenyl tetrazolium bromide (MTT) assay to measure the viability of iNSCs, iNSC-derived astrocytes and neurons from the PBS and CR2-Crry groups following CHI mouse serum treatment (Supplementary Fig. 1h, 2 h and 3 h). The cell viabilities between the two groups without CHI mouse serum treatment were almost identical. However, dramatic decreases in cellular viability within each group were observed after CHI mouse serum treatment ($n = 3/\text{group}$, $P < 0.05$). Moreover, the viabilities of iNSCs, iNSC-derived astrocytes and neurons were significantly lower in the PBS groups than in the CR2-Crry group ($n = 3/\text{group}$, $P < 0.05$). These data implied that, following treatment with CHI mouse serum, the pre-treatment of iNSCs with CR2-Crry clearly enhanced *Crry* expression and Akt activation in iNSCs, iNSC-derived astrocytes and neurons. Additionally, the pre-treatment of iNSCs with CR2-Crry markedly improved the survival of iNSCs, iNSC-derived astrocytes and neurons post-treatment with CHI mouse serum.

Increased levels of *Crry* expression and Akt activation in neurons in the brains of CHI mice receiving iNSCs pre-treated with CR2-Crry

To determine the effect of intracerebral-transplanted iNSCs receiving CR2-Crry pre-treatment on CHI mice, we performed double-labelling experiments and observed that Crry⁺/NeuN⁺, p-Akt⁺/NeuN⁺ and Akt⁺/NeuN⁺ neurons were present in the injured cortices of the iNSC (CR2-Crry; CHI mice receiving iNSCs pre-treated with CR2-Crry) group on day 14 post-trauma (Fig. 7a-c). In contrast, NeuN⁺/TUNEL⁺ neurons were evident in the injured cortices of the PBS (CHI mice receiving PBS) group at the same time point (Fig. 7d). Quantitatively, the levels of Crry⁺/NeuN⁺, p-Akt⁺/NeuN⁺ and Akt⁺/NeuN⁺ neurons were significantly higher in the iNSC (CHI mice receiving iNSCs pre-treated with PBS) group than in the PBS group (n = 6/group, $P < 0.05$) (Fig. 7e-g). Moreover, the numbers of Crry⁺/NeuN⁺, p-Akt⁺/NeuN⁺ and Akt⁺/NeuN⁺ neurons were markedly higher in the iNSC (CR2-Crry) group than in the other two groups (n = 6/group, $P < 0.05$). In addition, the levels of NeuN⁺/TUNEL⁺ neurons were substantially lower in the iNSC group than in the PBS group (n = 6/group, $P < 0.05$) (Fig. 7h). Furthermore, the numbers of NeuN⁺/TUNEL⁺ neurons were significantly lower in the iNSC (CR2-Crry) group than in the other two groups (n = 6/group, $P < 0.05$).

Subsequently, we utilized western blot analysis to evaluate the levels of C3d, C9, Crry, active Caspase-3, p-Akt, Akt and p-Akt/Akt in the brains of CHI mice among the three groups at 14 days after injury (Fig. 8). The levels of C3d, C9 and active Caspase-3 in the brains of the iNSC group were markedly lower than those in the PBS group (n = 6/group, $P < 0.05$). However, the levels of Crry, p-Akt, Akt and p-Akt/Akt in the brains of CHI mice were substantially higher in the iNSC group than in the PBS group (n = 6/group, $P < 0.05$). Remarkably, the levels of C3d, C9 and active Caspase-3 in the brains of CHI mice were significantly lower, whereas the levels of Crry, p-Akt, Akt and p-Akt/Akt were markedly higher in the iNSC (CR2-Crry) group than in the other two groups (n = 6/group, $P < 0.05$). In summary, intracerebral-transplanted iNSCs, pre-treated with CR2-Crry, could enhance Crry expression and Akt activation in neurons and reduce complement-mediated injury to neurons in the brains of CHI mice.

Discussion

Neuronal apoptosis induced by complement activation following CHI is a major cause of neurological disorders.^{4,5} Growing evidence indicates that neuronal replacement using stem cell transplantation can play a positive role in the treatment of neuronal damage.^{15,16} However, complement-mediated cytolysis also exerts deleterious effects on these stem cell grafts.^{20–22} We previously reported that early CHI mouse serum treatment increases the levels of Crry expression in transplanted iNSCs to reduce complement-mediated injury to grafts and hosts.^{23,24} However, the mechanism underlying the elevated levels of Crry expression remained elusive. Recent studies have suggested that Crry expression is associated with several signalling molecules, such as Erk, P38, Jnk and Akt.^{30–34} In the present study, we observed that the pre-treatment of iNSCs with CHI mouse serum significantly enhanced Crry expression and Akt activation in iNSCs. Furthermore, Akt inhibition led to the reduction of Crry expression in iNSCs. Moreover, the protective effect of Crry expression in iNSCs was substantially attenuated by Akt inhibition. Therefore, the pre-treatment of iNSCs with CHI mouse serum increased the levels of Crry expression in

iNSCs mainly via Akt activation. The discrepancies between these results and previous studies, which show the roles of the Erk, P38 and Jnk signalling molecules in Crry expression, reflect the complicated effects of CHI mouse serum pre-treatment on iNSCs.^{30–34}

Additionally, the pre-treatment of iNSCs with CHI mouse serum markedly enhanced Crry expression and Akt activation in iNSC-derived astrocytes, whereas it did not affect the levels of Crry expression or Akt activation in iNSC-derived neurons. Furthermore, the level of Akt activation in astrocytes was significantly higher than that in neurons, consistent with previous studies showing Akt activation as a key driver of astroglial differentiation.^{35,36} Therefore, the differences in Akt activation between astrocytes and neurons may be responsible for the differences in Crry expression between them.

We previously reported that iNSC-derived astrocytes produce soluble Crry to protect neurons from complement-mediated damage.²⁴ In the present study, we observed that the treatment of iNSC-derived neurons with astrocyte culture supernatants substantially enhanced Crry expression and Akt activation in neurons. Furthermore, the administration of the neutralizing anti-Crry antibody showed that the levels of Crry expression and Akt activation in neurons were positively associated with the levels of Crry in astrocyte culture supernatants. These results reveal a positive effect of Crry on Akt activation, consistent with previous studies indicating Akt activation induced by Crry.^{32–34} Hence, Crry in astrocyte culture supernatants may play a critical role in the increase of Crry expression in neurons through activation of Akt since Akt activation may be responsible for Crry expression.

Next, we evaluated the effect of Crry treatment on iNSC-derived neurons following complement-mediated damage. The treatment of neurons with CHI mouse serum slightly increased the levels of endogenous *Crry* and *Akt* genes in neurons. However, the levels of these genes in neurons receiving CHI mouse serum treatment were markedly lower than those in neurons receiving CHI mouse serum and CR2-Crry treatment. Additionally, western blot analysis, immunofluorescence staining and flow cytometry demonstrated that the treatment of neurons with CHI mouse serum and CR2-Crry significantly enhanced Crry expression and Akt activation in neurons. Moreover, following CHI mouse serum treatment, the administration of CR2-Crry effectively attenuated the deposition of C3d and C9 in neurons, as well as the extent of neuronal cell death. In summary, except for the reduction of complement-mediated cytotoxicity mediated by CR2-Crry, the beneficial effects of CR2-Crry treatment on neuronal survival may be attributed to the elevated levels of Crry expression in neurons through Akt activation induced by CR2-Crry since Akt activation has the potential to increase the expression of Crry in neurons.^{11,30,37}

To further examine the role of CR2-Crry in neuroprotection, we performed a series of experiments and observed that the pre-treatment of iNSCs with CR2-Crry substantially enhanced Crry expression and Akt activation in iNSCs, iNSC-derived astrocytes and neurons. Furthermore, the pre-treatment of iNSCs with CR2-Crry effectively reduced the death of iNSCs, iNSC-derived astrocytes and neurons post-treatment with CHI mouse serum. These findings are partially consistent with previous research, and the differences in the levels of Crry expression and Akt activation in neurons derived from iNSCs receiving CR2-Crry pre-treatment and CHI mouse serum pre-treatment may be due to the differences in the levels of Crry between

them (data not shown).^{24,30,38} Moreover, in addition to Crry expression in iNSC-derived astrocytes and neurons, we also observed an increase in the levels of Crry expression in oligodendrocytes derived from iNSCs receiving CR2-Crry pre-treatment, though this difference was not significant (data not shown). Therefore, subsequent work will continue to elucidate the reason behind the differences in Crry expression among these cells.

We previously reported that intracerebral-transplanted iNSCs pre-treated with CHI mouse serum clearly upregulate the levels of Crry expression in astrocytes resulting in reduced accumulation of C3d and C9 and the death of neurons in the brains of CHI mice.²⁴ However, it remained unclear whether iNSC grafts can enhance Crry expression in neurons *in vivo*. In the present study, we observed that iNSCs pre-treated with CR2-Crry significantly increased the levels of Crry expression and Akt activation in neurons in the brains of CHI mice. Moreover, grafted iNSCs receiving CR2-Crry pre-treatment substantially attenuated the deposition of C3d and C9 and the extent of neuronal cell death in injured brains. These results suggest that the pre-treatment of iNSCs with CR2-Crry can markedly enhance Crry expression in neurons and protect neurons from complement-mediated damage in the brains of CHI mice.

Taken together, these findings indicate that Crry expression in iNSCs is mainly modulated via Akt activation. Additionally, Crry has the potential to regulate the activation of Akt, which is consistent with previous studies.^{32–34} Therefore, the interaction between Crry and Akt may constitute a system that leads to the constantly rising levels of Crry expression and Akt activation. The system reported here plays an important role in the reduction of complement-mediated injury to grafts and hosts post-CHI. In addition, the pre-treatment of iNSCs with CR2-Crry versus CHI mouse serum is a more convenient method that significantly increases the levels of Crry expression in iNSCs, iNSC-derived astrocytes and neurons and ameliorates complement-mediated damage *in vitro* and *in vivo*. Therefore, we will continue to examine the role of transplanted iNSCs receiving CR2-Crry pre-treatment in chronic post-traumatic neuropathology, as the complement system is implicated in both acute and chronic neuroinflammation and neurodegeneration after CHI.^{39–42}

Conclusions

In conclusion, this study demonstrates that the interaction between Crry and Akt may constitute a system that plays an important role in the reduction of complement-mediated injury to grafts and hosts post-CHI. In addition, the pre-treatment of iNSCs with CR2-Crry versus CHI mouse serum is a more convenient method that significantly increases the levels of Crry expression in iNSCs, iNSC-derived astrocytes and neurons and ameliorates complement-mediated damage *in vitro* and *in vivo*.

Abbreviations

CHI: closed head injury; iNSCs: induced neural stem cells; Crry: complement receptor type 1-related protein y; CR2: complement receptor 2; fH: factor H; SD: standard deviation; HI-CHI: heat-inactivated CHI; MTT: 3-[4, 5-dimethylthiazol-2-yl]-2, 5-diphenyl tetrazolium bromide.

Declarations

Availability of data and materials

The data used in this study are available from the corresponding author on reasonable request.

Ethics approval and consent to participate

All experimental procedures were in compliance with the Guide for the Care and Use of Laboratory Animals published by the National Institutes of Health (NIH) and approved by the Committee on the Ethics of Animal Experiments of the General Hospital of Beijing Military Region, P.L.A (Permit Number: 2016-040).

Consent for publication

Not applicable.

Competing interests

All authors declare that they have no conflict of interest.

Funding

This work was supported by grants from the National Natural Science Foundation of China (NSFC) (No. 81671189 and No. 81971295), and the Military Medical Innovation Project of the Army (No. 16CXZ001).

Authors' contributions

MG, LC, JZ, and RX designed the study. MG, WW and ZY performed cell culture and cell transplantation experiments. YL performed complement deposition assay. BD assisted MG in the morphological and molecular biological analyses. QD performed the statistical analysis work. All authors read and approved the final manuscript.

Acknowledgments

Not applicable.

Author details

¹ Department of Neurosurgery, Sichuan Academy of Medical Sciences and Sichuan Provincial People's Hospital, School of Medicine, University of Electronic Science and Technology of China, Chengdu 610072,

China; ²Department of Neurosurgery, The Sixth Medical Center, The PLA General Hospital, Beijing 100048, China; ³Department of Neurology, Fu Xing Hospital, Capital Medical University, Beijing 100038, China; ⁴Department of ENT-HN, Hainan Hospital of PLA General Hospital, Sanya 572013, China; ⁵Tianjin Regeneration Bio-technology Co. Ltd., Tianjin 300450, China; ⁶Department of Obstetrics, Fu Xing Hospital, Capital Medical University, Beijing 100038, China and ⁷Department of Neurosurgery, The Seventh Medical Center, The PLA General Hospital, Beijing 100700, China

References

1. McMillan T, Wilson L, Ponsford J, Levin H, Teasdale G, Bond M. The Glasgow Outcome Scale-40 years of application and refinement. *Nat Rev Neurol*. 2016;12:477–85.
2. Ransohoff RM. How neuroinflammation contributes to neurodegeneration. *Science*. 2016;353:777–83.
3. Huber-Lang M, Lambris JD, Ward PA. Innate immune responses to trauma. *Nat Immunol*. 2018;19:327–41.
4. Hammad A, Westacott L, Zaben M. The role of the complement system in traumatic brain injury: a review. *J Neuroinflamm*. 2018;15:24.
5. Cekanaviciute E, Buckwalter MS. Astrocytes: integrative regulators of neuroinflammation in stroke and other neurological diseases. *Neurotherapeutics*. 2016;13:685–701.
6. Fluiter K, Opperhuizen AL, Morgan BP, Baas F, Ramaglia V. Inhibition of the membrane attack complex of the complement system reduces secondary neuroaxonal loss and promotes neurologic recovery after traumatic brain injury in mice. *J Immunol*. 2014;192:2339–48.
7. Ruseva MM, Ramaglia V, Morgan BP, Harris CL. An anticomplement agent that homes to the damaged brain and promotes recovery after traumatic brain injury in mice. *Proc Natl Acad Sci USA*. 2015;112:14319–24.
8. Rich MC, Keene CN, Neher MD, Johnson K, Yu ZX, Ganivet A, et al. Site-targeted complement inhibition by a complement receptor 2-conjugated inhibitor (mTT30) ameliorates post-injury neuropathology in mouse brains. *Neurosci Lett*. 2016;617:188–94.
9. Alawieh A, Langle EF, Weber S, Adkins DA, Tomlinson S. Identifying the role of complement in triggering neuroinflammation after traumatic brain injury. *J Neurosci*. 2018;38:2519–32.
10. Hajishengallis G, Reis ES, Mastellos DC, Ricklin D, Lambris JD. Novel mechanisms and functions of complement. *Nat Immunol*. 2017;18:1288–98.
11. Alawieh A, Tomlinson S. Injury site-specific targeting of complement inhibitors for treating stroke. *Immunol Rev*. 2016;274:270–80.
12. Orsini F, De Blasio D, Zangari R, Zanier ER, De Simoni MG. Versatility of the complement system in neuroinflammation, neurodegeneration and brain homeostasis. *Front Cell Neurosci*. 2014;8:380.
13. Rancan M, Morganti-Kossmann MC, Barnum SR, Saft S, Schmidt OI, Ertel W, et al. Central nervous system-targeted complement inhibition mediates neuroprotection after closed head injury in

- transgenic mice. *J Cereb Blood Flow Metab.* 2003;23:1070–4.
14. Leinhase I, Schmidt OI, Thurman JM, Hossini AM, Rozanski M, Taha ME, et al. Pharmacological complement inhibition at the C3 convertase level promotes neuronal survival, neuroprotective intracerebral gene expression, and neurological outcome after traumatic brain injury. *Exp Neurol.* 2006;199:454–64.
 15. Yao H, Gao M, Ma J, Zhang M, Li S, Wu B, et al. Transdifferentiation-Induced Neural Stem Cells Promote Recovery of Middle Cerebral Artery Stroke Rats. *PloS One.* 2015;10:e0137211.
 16. Shahbazi E, Moradi S, Nemati S, Satarian L, Basiri M, Gourabi H, et al. Conversion of human fibroblasts to stably self-renewing neural stem cells with a single zinc-finger transcription factor. *Stem Cell Rep.* 2016;6:539–51.
 17. Kim H, Mizuno M, Furuhashi K, Katsuno T, Ozaki T, Yasuda K, et al. Rat adipose tissue-derived stem cells attenuate peritoneal injuries in rat zymosan-induced peritonitis accompanied by complement activation. *Cytotherapy.* 2014;16:357–68.
 18. Mertens J, Marchetto MC, Bardy C, Gage FH. Evaluating cell reprogramming, differentiation and conversion technologies in neuroscience. *Nat Rev Neurosci.* 2016;17:424–37.
 19. Mollinari C, Zhao J, Lupacchini L, Garaci E, Merlo D, Pei G. Transdifferentiation: a new promise for neurodegenerative diseases. *Cell Death Dis.* 2018;9:1–9.
 20. Sacks SH, Zhou W. The role of complement in the early immune response to transplantation. *Nat Rev Immunol.* 2012;12:431–42.
 21. Wagner E, Frank MM. Therapeutic potential of complement modulation. *Nat Rev Drug Discov.* 2010;9:43–56.
 22. Griesemer A, Yamada K, Sykes M. Xenotransplantation: immunological hurdles and progress toward tolerance. *Immunol Rev.* 2014;258:241–58.
 23. Gao M, Dong Q, Yao H, Lu Y, Ji X, Zou M, et al. Systemic Administration of Induced Neural Stem Cells Regulates Complement Activation in Mouse Closed Head Injury Models. *Sci Rep.* 2017;7:45989.
 24. Gao M, Dong Q, Lu Y, Yao H, Zou M, Yang Y, et al. Induced neural stem cell-derived astrocytes modulate complement activation and mediate neuroprotection following closed head injury. *Cell Death Dis.* 2018;9:101.
 25. Flierl MA, Stahel PF, Beauchamp KM, Morgan SJ, Smith WR, Shohami E. Mouse closed head injury model induced by a weight-drop device. *Nat Protoc.* 2009;4:1328–37.
 26. Atkinson C, Song H, Lu B, Qiao F, Burns TA, Holers VM, et al. Targeted complement inhibition by C3d recognition ameliorates tissue injury without apparent increase in susceptibility to infection. *J Clin Invest.* 2005;115:2444–53.
 27. Killedar SY, Eckenrode SE, McIndoe RA, She JX, Nguyen CQ, Peck AB, et al. Early pathogenic events associated with Sjögren's syndrome (SjS)-like disease of the NOD mouse using microarray analysis. *Lab Invest.* 2006;86:1243–60.

28. Gwon SY, Ahn JY, Jung CH, Moon BK, Ha TY. Shikonin suppresses ERK 1/2 phosphorylation during the early stages of adipocyte differentiation in 3T3-L1 cells. *BMC Complement Altern Med*. 2013;13:207.
29. Wakatsuki S, Saitoh F, Araki T. ZNRF1 promotes Wallerian degeneration by degrading AKT to induce GSK3B-dependent CRMP2 phosphorylation. *Nat Cell Biol*. 2011;13:1415–23.
30. Hajishengallis G, Lambris JD. More than complementing Tolls: complement-Toll-like receptor synergy and crosstalk in innate immunity and inflammation. *Immunol Rev*. 2016;274:233–44.
31. Marshall KM, He S, Zhong Z, Atkinson C, Tomlinson S. Dissecting the complement pathway in hepatic injury and regeneration with a novel protective strategy. *J Exp Med*. 2014;211:1793–805.
32. Jacob A, Hensley LK, Safratowich BD, Quigg RJ, Alexander JJ. The role of the complement cascade in endotoxin-induced septic encephalopathy. *Lab Invest*. 2007;87:1186–94.
33. Jiménez-Periañez A, Ojeda G, Criado G, Sánchez A, Pini E, Madrenas J, et al. Complement regulatory protein Crry/p65-mediated signaling in T lymphocytes: role of its cytoplasmic domain and partitioning into lipid rafts. *J Leukocyte Biol*. 2005;78:1386–96.
34. Liszewski MK, Kolev M, Le Friec G, Leung M, Bertram PG, Fara AF, et al. Intracellular complement activation sustains T cell homeostasis and mediates effector differentiation. *Immunity*. 2013;39:1143–57.
35. Lee DY, Yeh TH, Emnett RJ, White CR, Gutmann DH. Neurofibromatosis-1 regulates neuroglial progenitor proliferation and glial differentiation in a brain region-specific manner. *Gene Dev*. 2010;24:2317–29.
36. Kim MY, Kaduwal S, Yang DH, Choi KY. Bone morphogenetic protein 4 stimulates attachment of neurospheres and astrogenesis of neural stem cells in neurospheres via phosphatidylinositol 3 kinase-mediated upregulation of N-cadherin. *Neuroscience*. 2010;170:8–15.
37. Moriyama M, Fukuhara T, Britschgi M, He Y, Narasimhan R, Villeda S, et al. Complement receptor 2 is expressed in neural progenitor cells and regulates adult hippocampal neurogenesis. *J Neurosci*. 2011;31:3981–9.
38. Lai BQ, Che MT, Du BL, Zeng X, Ma YH, Feng B, et al. Transplantation of tissue engineering neural network and formation of neuronal relay into the transected rat spinal cord. *Biomaterials*. 2016;109:40–54.
39. Lian H, Litvinchuk A, Chiang ACA, Aithmitti N, Jankowsky JL, Zheng H. Astrocyte-microglia cross talk through complement activation modulates amyloid pathology in mouse models of Alzheimer's disease. *J Neurosci*. 2016;36:577–89.
40. Simon DW, McGeachy MJ, Bayir H, Clark RS, Loane DJ, Kochanek PM, et al. The far-reaching scope of neuroinflammation after traumatic brain injury. *Nat Rev Neurol*. 2017;13:171–91.
41. Crotti A, Glass CK. The choreography of neuroinflammation in Huntington's disease. *Trends Immunol*. 2015;36:364–73.
42. Holers VM. Complement and its receptors: new insights into human disease. *Annu Rev Immunol*. 2014;32:433–59.

Figures

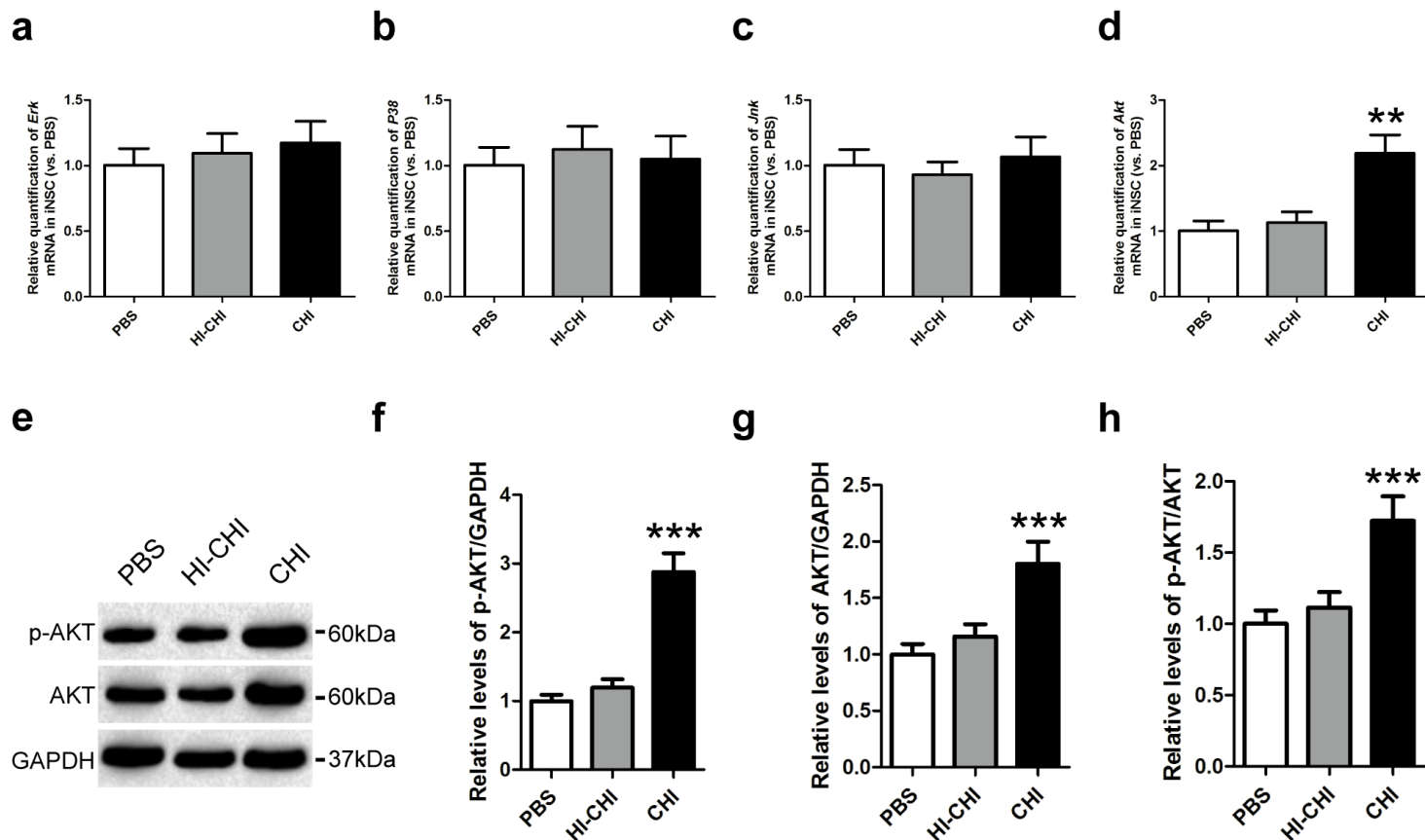


Figure 1

CHI mouse serum pre-treatment led to Akt activation in iNSCs. (a-d) RT-QPCR was utilized to determine the expression of the *Erk* (a), *P38* (b), *Jnk* (c), and *Akt* (d) genes in iNSCs among the PBS (iNSCs receiving PBS pre-treatment), HI-CHI (iNSCs receiving heat-inactivated CHI mouse serum pre-treatment), and CHI (iNSCs receiving CHI mouse serum pre-treatment) groups following treatment with CHI mouse serum for 45 min (n=3/group; One-way ANOVA, **P<0.01 versus PBS and HI-CHI groups, respectively). (e) Representative immunoblots depicting the levels of p-AKT and AKT in iNSCs among the three groups after CHI mouse serum treatment. (f-h) Histograms showing the relative levels of p-AKT (f), AKT (g), and p-AKT/AKT (h) in iNSCs among the three groups following treatment with CHI mouse serum (n=6/group; One-way ANOVA, ***P<0.001 versus PBS and HI-CHI groups, respectively).

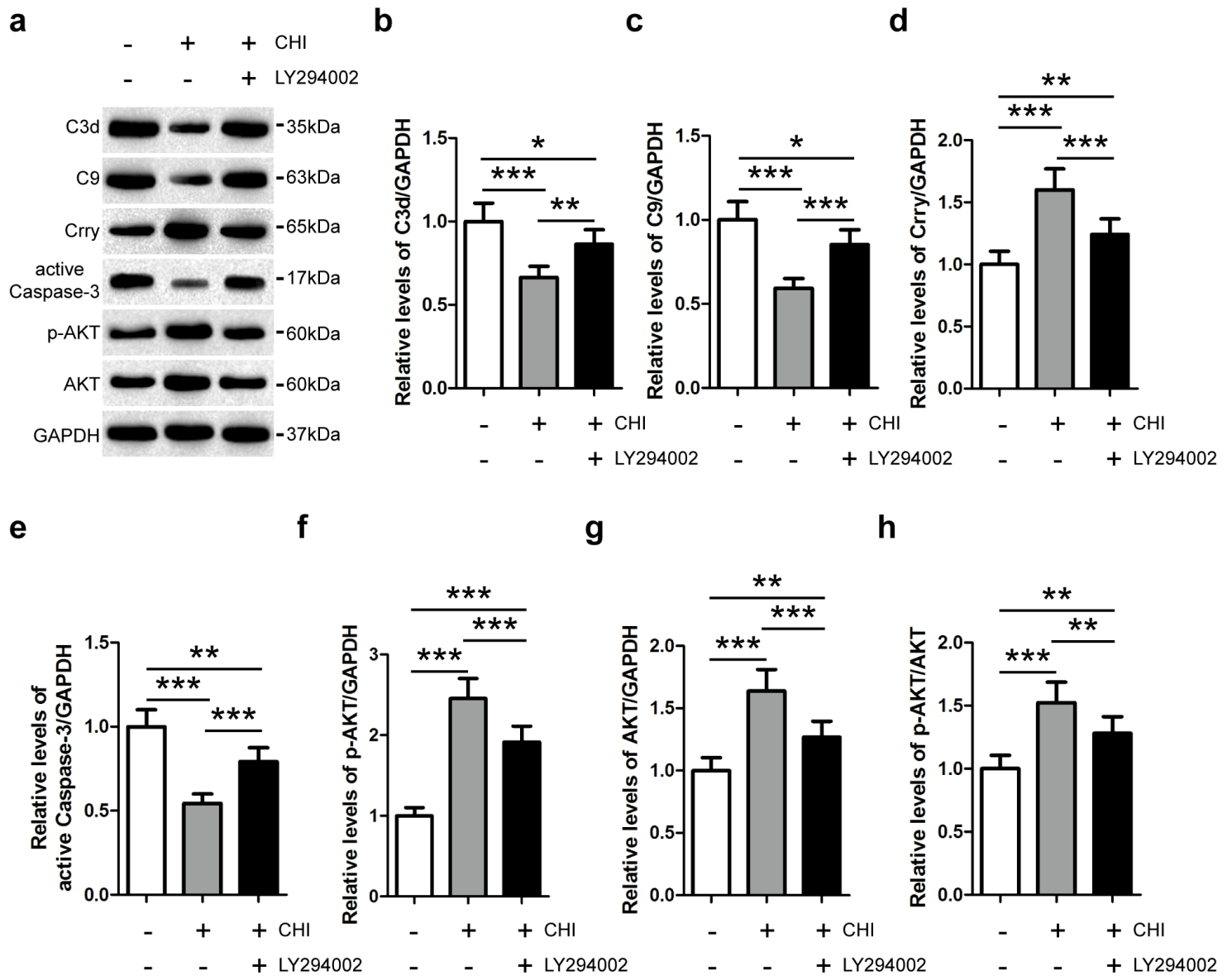


Figure 2

Akt inhibition reduced Crry expression in iNSCs pre-treated with CHI mouse serum. (a) Representative immunoblots depicting the levels of C3d, C9, Crry, active Caspase-3, p-AKT and AKT in iNSCs among the PBS (iNSCs receiving PBS pre-treatment), CHI (iNSCs receiving CHI mouse serum pre-treatment), and CHI+LY294002 (iNSCs receiving CHI mouse serum and LY294002 pre-treatment) groups following treatment with CHI mouse serum for 45 min. (b-h) Histograms showing the relative levels of C3d (b), C9 (c), Crry (d), active Caspase-3 (e), p-AKT (f), AKT (g), and p-AKT/AKT (h) in iNSCs among the three groups after CHI mouse serum treatment (n=6/group; One-way ANOVA, *P<0.05, **P<0.01, ***P<0.001).

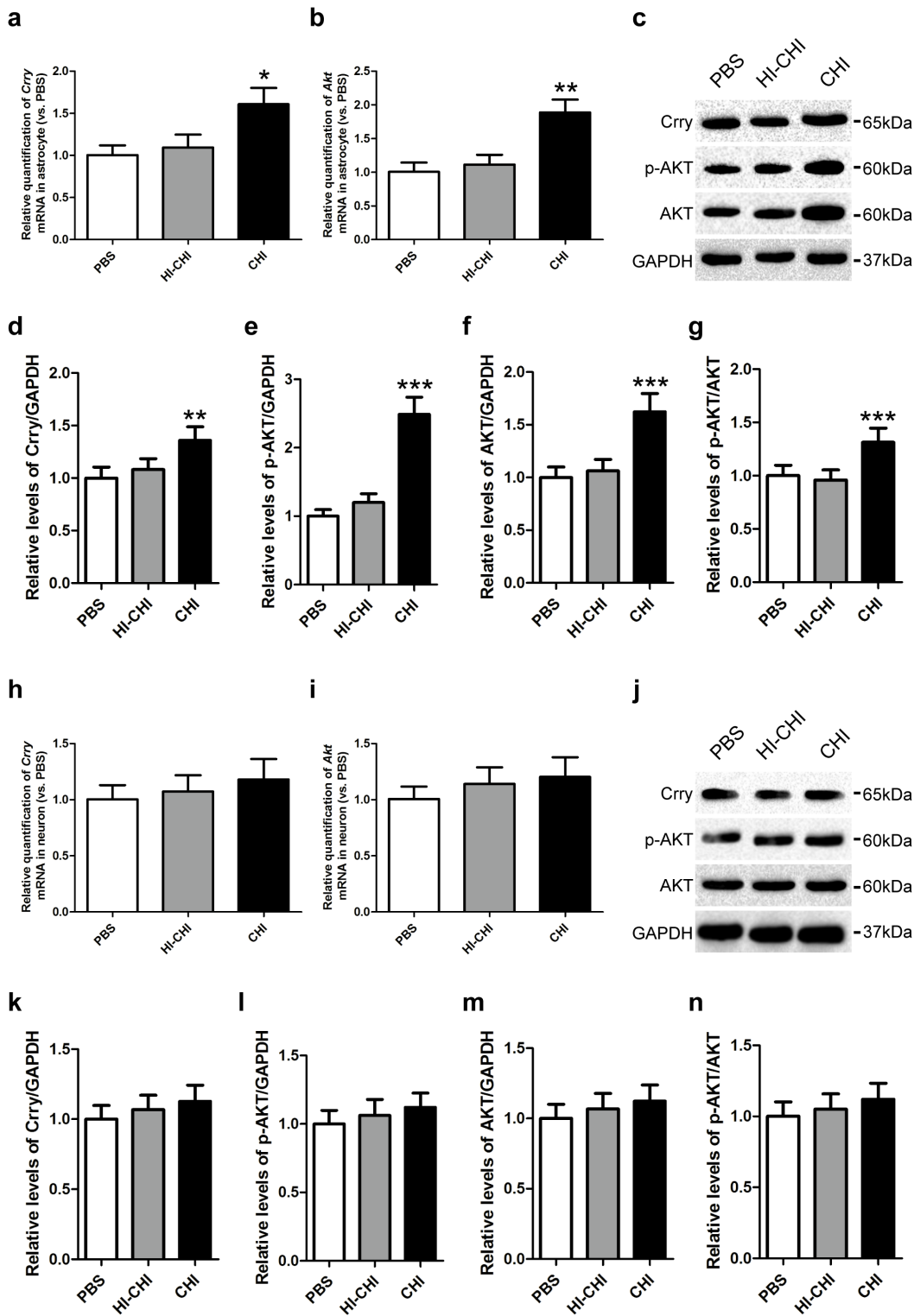


Figure 3

Crry expression and Akt activation in astrocytes and neurons derived from iNSCs receiving CHI mouse serum pre-treatment. (a, b) RT-QPCR was utilized to determine the expression of the Crry (a), and Akt (b) genes in astrocytes derived from iNSCs among the PBS (iNSCs receiving PBS pre-treatment), HI-CHI (iNSCs receiving heat-inactivated CHI mouse serum pre-treatment), and CHI (iNSCs receiving CHI mouse serum pre-treatment) groups following treatment with CHI mouse serum for 45 min (n=3/group; One-way

ANOVA, * $P < 0.05$, ** $P < 0.01$ versus PBS and HI-CHI groups, respectively). (c) Representative immunoblots depicting the levels of Crry, p-AKT and AKT in astrocytes derived from iNSCs among the three groups after CHI mouse serum treatment. (d-g) Histograms showing the relative levels of Crry (d), p-AKT (e), AKT (f), and p-AKT/AKT (g) in astrocytes derived from iNSCs among the three groups following treatment with CHI mouse serum ($n = 6/\text{group}$; One-way ANOVA, ** $P < 0.01$, *** $P < 0.001$ versus PBS and HI-CHI groups, respectively). (h, i) The expression of the Crry (h), and Akt (i) genes in neurons derived from iNSCs among the three groups after CHI mouse serum treatment were determined by RT-QPCR ($n = 3/\text{group}$; One-way ANOVA). (j) Representative immunoblots depicting the levels of Crry, p-AKT and AKT in neurons derived from iNSCs among the three groups following treatment with CHI mouse serum. (k-n) Histograms showing the relative levels of Crry (k), p-AKT (l), AKT (m), and p-AKT/AKT (n) in neurons derived from iNSCs among the three groups after CHI mouse serum treatment ($n = 6/\text{group}$; One-way ANOVA).

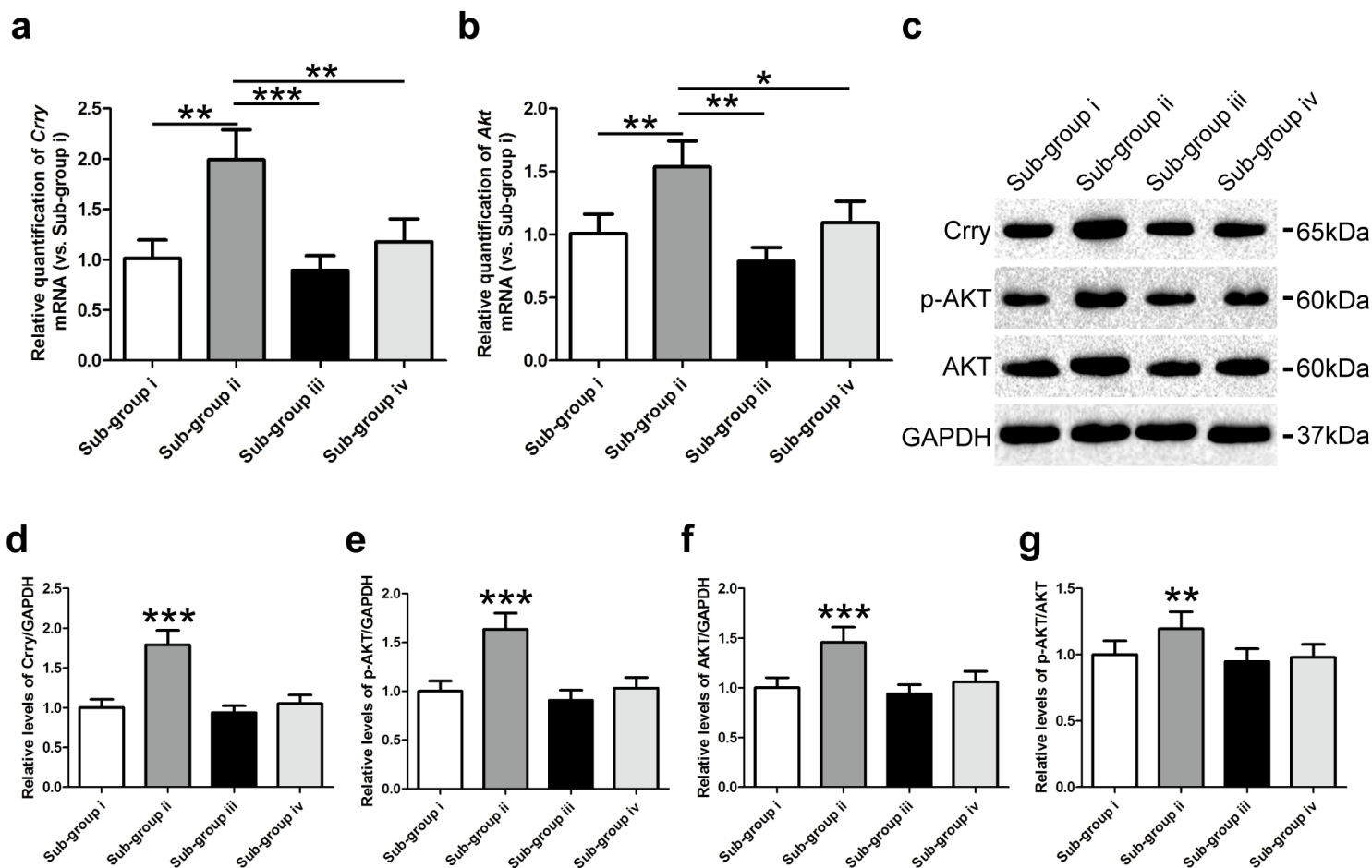


Figure 4

Enhanced levels of Crry expression and Akt activation in iNSC-derived neurons receiving astrocyte culture supernatants. (a, b) RT-QPCR was utilized to determine the expression of the Crry (a), and Akt (b) genes in neurons derived from iNSCs among the four sub-groups, which were separately treated as follows: (i) CHI mouse serum diluted (20%) in DMEM/F12 (1:1); (ii) CHI mouse serum diluted (20%) in the astrocyte culture supernatants; (iii) CHI mouse serum diluted (20%) in DMEM/F12 (1:1) containing purified rat anti-mouse Crry antibody at 5 µg ml⁻¹; and (iv) CHI mouse serum diluted (20%) in the astrocyte culture

supernatants containing purified rat anti-mouse Crry antibody at 5 $\mu\text{g ml}^{-1}$ for 45 min at 37°C (n=3/group; One-way ANOVA, *P<0.05, **P<0.01, ***P<0.001 versus i, iii and iv sub-groups, respectively). (c) Representative immunoblots depicting the levels of Crry, p-AKT and AKT in neurons derived from iNSCs among the four sub-groups. (d-g) Histograms showing the relative levels of Crry (d), p-AKT (e), AKT (f), and p-AKT/AKT (g) in neurons derived from iNSCs among the four sub-groups (n=6/group; One-way ANOVA, **P<0.01, ***P<0.001 versus i, iii and iv sub-groups, respectively).

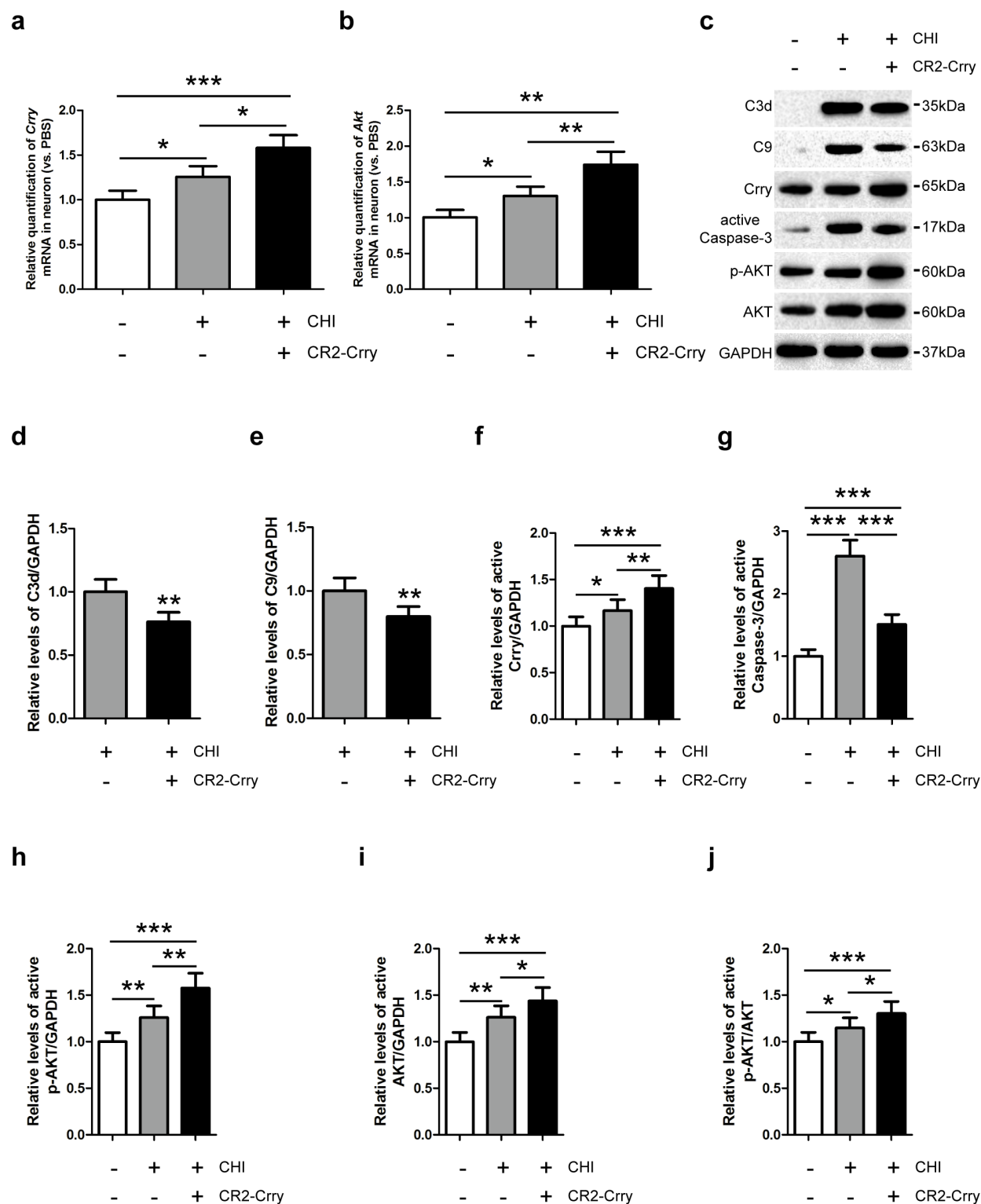


Figure 5

Crry expression and Akt activation in iNSC-derived neurons treated with CR2-Crry. (a, b) RT-QPCR was utilized to determine the expression of the Crry (a), and Akt (b) genes in neurons derived from iNSCs among the PBS (neurons receiving PBS treatment), CHI (neurons receiving CHI mouse serum treatment), and CHI+CR2-Crry (neurons receiving CHI mouse serum and CR2-Crry treatment) groups (n=3/group; One-way ANOVA, *P<0.05, **P<0.01, ***P<0.001). (c) Representative immunoblots depicting the levels of C3d, C9, Crry, active Caspase-3, p-AKT and AKT in neurons derived from iNSCs among the three groups. (d-j) Histograms showing the relative levels of C3d (d), C9 (e), Crry (f), active Caspase-3 (g), p-AKT (h), AKT (i), and p-AKT/AKT (j) in neurons derived from iNSCs among the three groups (n=6/group; One-way ANOVA, *P<0.05, **P<0.01, ***P<0.001).

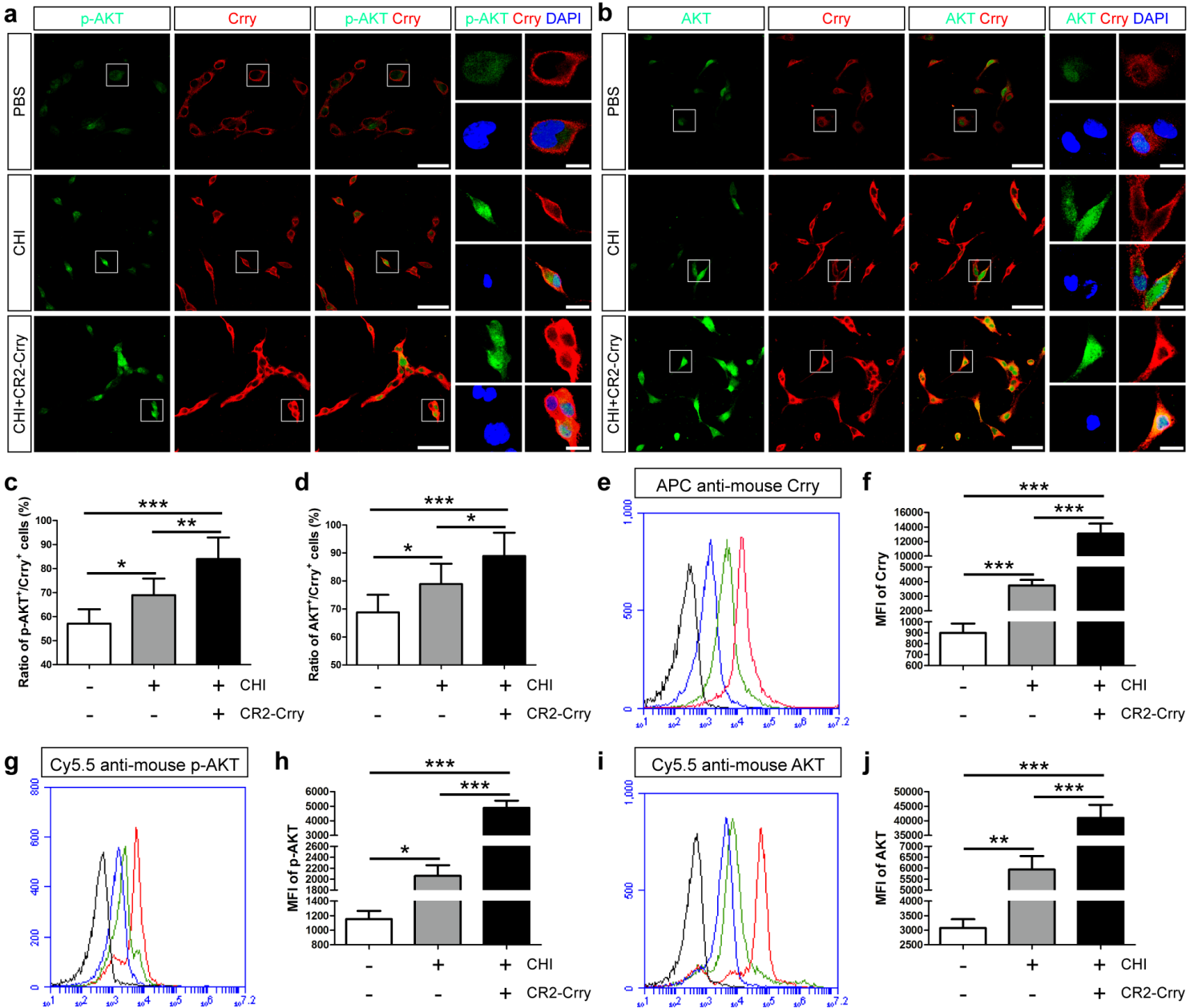


Figure 6

Elevated levels of Crry expression and Akt activation in iNSC-derived neurons receiving CR2-Crry treatment. (a, b) Representative staining for the p-AKT+ (green, a), AKT+ (green, b), and Crry+ (red) depicted p-AKT, AKT and Crry levels in neurons derived from iNSCs among the PBS (neurons receiving PBS treatment), CHI (neurons receiving CHI mouse serum treatment), and CHI+CR2-Crry (neurons receiving CHI mouse serum and CR2-Crry treatment) groups. Nuclei were counterstained with DAPI (blue). (c, d) Histograms showing the ratio of p-AKT+/Crry+ (c, the number of p-AKT and Crry double-positive cells/the total number of DAPI-positive cells) and AKT+/Crry+ (d, the number of AKT and Crry double-positive cells/the total number of DAPI-positive cells) cells among the three groups (n=6/group; One-way ANOVA, *P<0.05, **P<0.01, ***P<0.001). (e, g and i) Representative flow cytometric analysis of Crry (e), p-AKT (g), and AKT (i) expression in neurons derived from iNSCs among the PBS (blue line), CHI (green line), and CHI+CR2-Crry (red line) groups. Isotype antibodies were used as controls (black line). (f, h and j) Histograms indicating the median fluorescence intensity (MFI) values of Crry (f), p-AKT (h), and AKT (j) expression in iNSC-derived neurons among the three groups (n=3/group; One-way ANOVA, *P<0.05, **P<0.01, ***P<0.001). Scale bar=100 μ m (15 μ m).

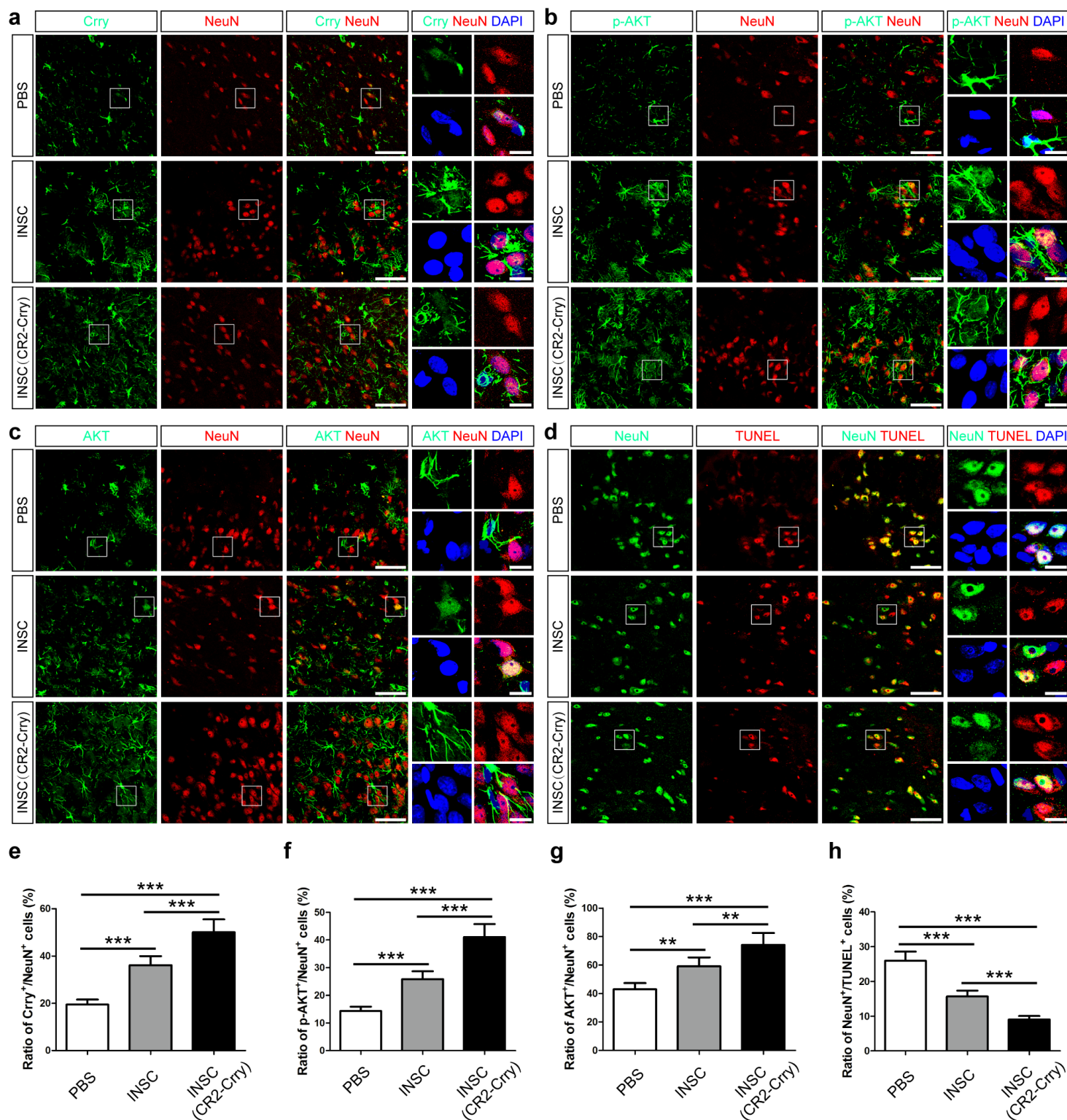


Figure 7

Increased levels of Crry expression and Akt activation in neurons in the brains of CHL mice receiving iNSCs pre-treated with CR2-Crry. (a-c) Representative staining for Crry+ (green, a), p-AKT+ (green, b), AKT+ (green, c), and NeuN+ (red) cells depicting the distribution of Crry+/NeuN+, p-AKT+/NeuN+ and AKT+/NeuN+ neurons in the injured cortex among the PBS (CHL mice receiving PBS), iNSC (CHL mice receiving iNSCs pre-treated with PBS), and iNSC (CR2-Crry) (CHL mice receiving iNSCs pre-treated with

CR2-Crry) groups on day 14 post-CHI. Nuclei were counterstained with DAPI (blue). (d) Representative staining for NeuN+ (green) and TUNEL+ (red) cells depicting the distribution of NeuN+/TUNEL+ neurons in the injured cortex among the three groups at 14 days after CHI. Nuclei were counterstained with DAPI (blue). (e-h) Histograms indicating the ratio of Crry+/NeuN+ (e, the number of Crry and NeuN double-positive cells/the total number of DAPI-positive cells), p-AKT+/NeuN+ (f, the number of p-AKT and NeuN double-positive cells/the total number of DAPI-positive cells), and AKT+/NeuN+ (g, the number of AKT and NeuN double-positive cells/the total number of DAPI-positive cells), and NeuN+/TUNEL+ (h, the number of NeuN and TUNEL double-positive cells/the total number of DAPI-positive cells) cells in the injured cortex among the three groups on day 14 post-CHI (n=6/group; One-way ANOVA, **P<0.01, ***P<0.001). Scale bar=50 μ m (5 μ m).

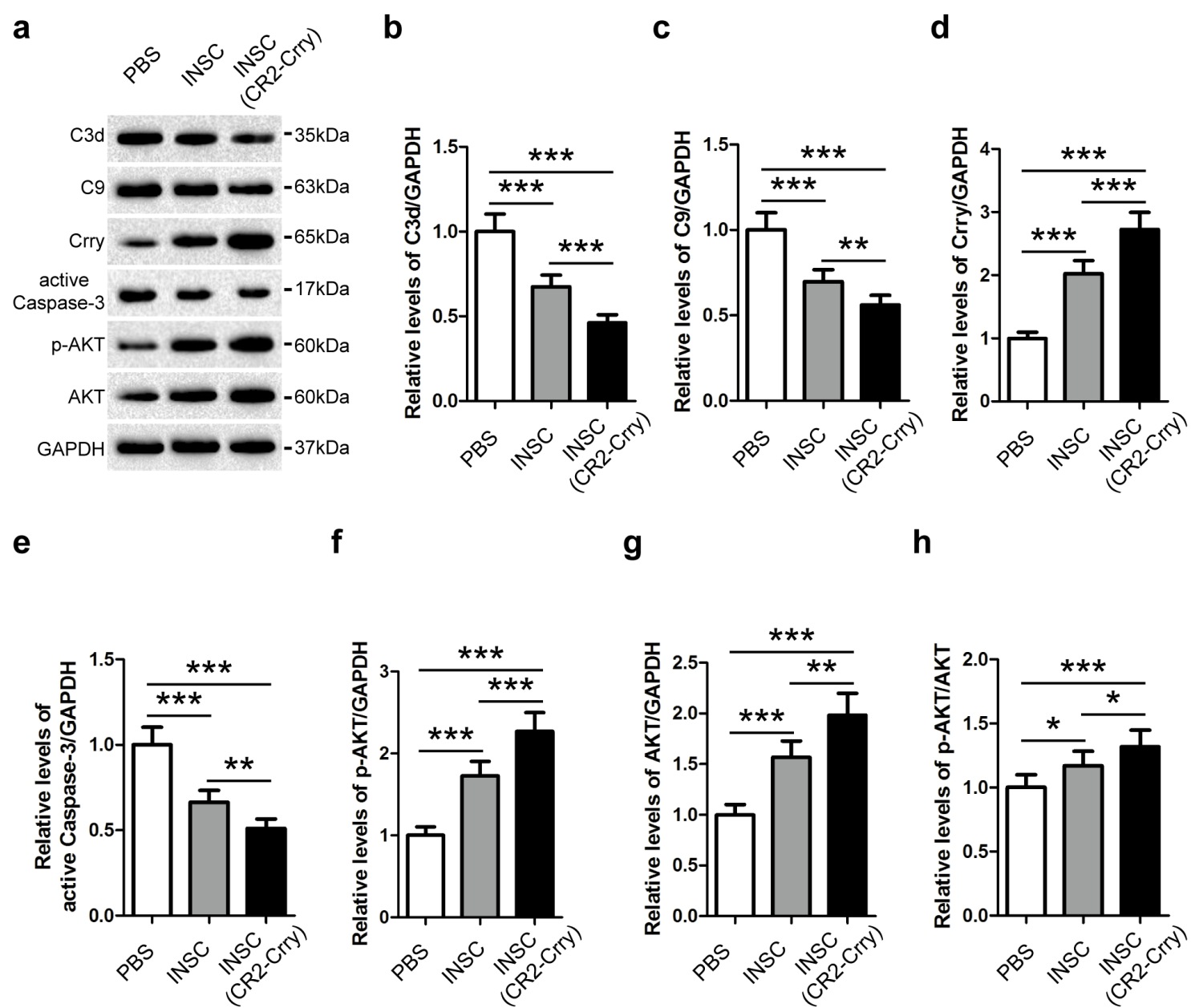


Figure 8

Intracerebral transplantation of iNSCs receiving CR2-Crry pre-treatment influenced Crry expression, Akt and complement activation in the brains of CHI mice. (a) Representative immunoblots depicting the levels of C3d, C9, Crry, active Caspase-3, p-AKT and AKT in the brains of mice among the PBS (CHI mice receiving PBS), iNSC (CHI mice receiving iNSCs pre-treated with PBS), and iNSC (CR2-Crry) (CHI mice receiving iNSCs pre-treated with CR2-Crry) groups on day 14 post-CHI. (b-h) Histograms showing the relative levels of C3d (b), C9 (c), Crry (d), active Caspase-3 (e), p-AKT (f), AKT (g), and p-AKT/AKT (h) in the brains of mice among the three groups at 14 days after CHI (n=6/group; One-way ANOVA, *P<0.05, **P<0.01, ***P<0.001).

Supplementary Files

This is a list of supplementary files associated with this preprint. Click to download.

- [SupplementaryMaterial.doc](#)
- [FigureS3.tif](#)
- [FigureS1.tif](#)
- [FigureS2.tif](#)