

# 3D-Printed PCL Composite Scaffolds Incorporating IGF-1 Loaded PLGA Nanoparticles for Cartilage Tissue Engineering

**Peiran Wei**

Nanjing First Hospital, Nanjing Medical University

**Yan Xu**

Nanjing First Hospital, Nanjing Medical University

**Yue Gu**

Nanjing First Hospital, Nanjing Medical University

**Qingqiang Yao**

Nanjing First Hospital, Nanjing Medical University

**Jiayi Li**

Nanjing First Hospital, Nanjing Medical University

**Liming Wang** (✉ [wlmnjyy@126.com](mailto:wlmnjyy@126.com))

Nanjing First Hospital, Nanjing Medical University

---

## Research

**Keywords:** IGF-1, nanoparticles, PCL, 3D, cartilage tissue engineering

**Posted Date:** May 13th, 2020

**DOI:** <https://doi.org/10.21203/rs.3.rs-28605/v1>

**License:** © ⓘ This work is licensed under a Creative Commons Attribution 4.0 International License.

[Read Full License](#)

---

# Abstract

**Objective:** To fabricate and test a 3D-printed PCL scaffold incorporating IGF-1 loaded PLGA nanoparticles for cartilage tissue engineering.

**Methods:** IGF-1 loaded PLGA nanoparticles were produced by the double-emulsion method, and were incorporated onto 3D printed PCL scaffolds via PDA. Particle size, loading efficiency (LE) and encapsulation efficiency (EE) of the nanoparticles were examined. SEM, pore size, porosity, compression testing, contact angle, IGF-1 release kinetics of the composite scaffolds were also determined. For cell culture studies, CCK-8, Live/dead, MTT, GAG content and expression level of chondrocytes specific genes and HIF-1 $\alpha$  were also tested.

**Results:** There was no difference of the nanoparticle size. And the LE and EE of IGF-1 in PLGA nanoparticles was about  $5.53\% \pm 0.12\%$  and  $61.26\% \pm 2.71\%$ , respectively. There was a slower, sustained release for all drug-loaded nanoparticles PLGA/PDA/PCL scaffolds. There was no difference of pore size, porosity, compressive strength of each scaffold. The contact angles PCL scaffolds were significant decreased when coated with PDA and PLGA nanoparticale. ( $P < 0.05$ ) Live/dead staining showed more cells attached to the IGF-1 PLGA/PDA/PCL scaffolds. The CCK-8 and MTT assay showed higher cell proliferation and better biocompatibility of the IGF-1 PLGA/PDA/PCL scaffolds. ( $P < 0.05$ ) GAG content, chondrogenic gene expression level of SOX-9, COL-II, N-cadh, ACAN, and HIF pathway related gene(HIF-1 $\alpha$ ) were significantly higher in IGF-1 PLGA/PDA/PCL scaffolds on days 7 and 14 compared to other groups. ( $P < 0.05$ )

**Conclusions:** IGF-1 PLGA/PDA/PCL scaffolds may be a better method for sustained IGF-1 administration and a promising scaffold for cartilage tissue engineering.

## Introduction

As cartilage is a tissue with poor capacity of regeneration, cartilage tissue engineering offers the ability to repair cartilage by combining cells, scaffolds, and signals.[1, 2] Insulin-like growth factor-1 (IGF-1) has been extensively researched for its ability to encourage cell proliferation, inhibition of cell apoptosis, and anabolic effects on musculoskeletal tissues.[3–8] It has been demonstrated that IGF-1 is an anabolic growth factor that is very important in cartilage development and homeostasis.[9–11] And Many studies have demonstrated the efficacy of IGF-1 for articular cartilage repair, but it is dose-dependent.[10–15] Thus, sustained release of IGF-1 is required.

Poly(lactic acid-glycolic acid) (PLGA), has now been widely used as a drug carrier in tissue engineering applications, which can be used to fabricate drug-releasing nanoparticles.[16] With its adjustable degradation characteristics and biocompatibility, PLGA nanoparticles can be fabricated to deliver almost all types of drugs.[17]

It is known that biomimetic porous scaffolds with interconnected porosity play an essential role in tissue engineering.[18, 19] Currently, 3D printing allows fabrication of 3D scaffolds of virtually any shape from a computer aided design (CAD) for tissue engineering.[20] poly- $\epsilon$ -caprolactone (PCL) is a promising material used in 3D printing in the field of tissue engineering,[21] due to its superior mechanics, biodegradability, bioactivity, and material processability.[22] However, PCL is known for its hydrophobic nature, which can result in decreased cell-material interaction.[2, 8] Polydopamine (PDA) coating is widely used and easily prepared. Surface modification with PDA helps improve hydrophilicity and cellular performance of PCL scaffolds, such as cell adhesion, proliferation, and chondrogenetic differentiation, while maintaining or even improving the physical properties and structure,[2] and can form a tightly adhered coating on the surface of many organic or inorganic materials. [18, 23]

Given this background, we aimed to develop a 3D-printed PCL scaffold coated with IGF-1 laden PLGA nanoparticles for cartilage regeneration.

## Methods

### Fabrication of the IGF-1 laden PLGA nanoparticles and composite scaffolds

The double-emulsion (W/O/W) solvent evaporation method was used to produce IGF-1 laden PLGA nanoparticles. Briefly, 20 mg of lyophilized rhIGF-I were reconstituted in 50 ml of 0.6% (v/v) acetic acid and further diluted to 0.8 ml with 10 mM sodium phosphate buffer (pH 6.0) containing 15 mg/ml of Tween 20. This aqueous solution was emulsified with 5 ml of methylene chloride (MC) containing 250 mg of PLGA (75:25) at 13,500 rpm using an Ultraturrax for 2 min to form the primary W/O emulsion. This W/O emulsion was then poured into 200 ml of a 2% (w/v) polyvinyl alcohol (PVA)/phosphate-buffered saline (PBS) solution (pH 7.4) and homogenized for 2 min at 13,500 rpm. The resulting W/O/W emulsion was stirred at 700 rpm for 4 h at room temperature to allow MC to evaporate. Microspheres were recovered after centrifugation at 6000 rpm for 20 min, washed three times with deionized water, freeze-dried, and stored at 4 °C.

Properties of the scaffolds were designed with CAD using Mimics 17.0 software, and the scaffolds were printed by a 3D layer-by-layer fused deposition modelling (FDM) printer (FoChif Tech HTS, China). Briefly, PCL pellets (Mw 80000, Sigma, USA) were melt in a printing chamber at 120 °C and then printed with a lay down pattern of 0°/90°/180° along the z-axis. Thus, a cylinder PCL scaffold model with a diameter of 5 mm and height of 1 mm was produced.

0.3 g dopamine (DA, sigma, USA) was dissolved in 150 ml Tris (Sigma, USA) buffer (0.183 g Tris, pH = 8.5) to make a DA solution. PCL scaffolds were immersed in the solution which was stirred (300 rpm) for 24 h at 37 °C protecting from light. Then the scaffolds were washed with deionized water 3 times and dried, and these scaffolds were denoted as PDA-coated PCL scaffolds.

Suspension of IGF-1 loaded PLGA nanoparticles were dispersed in distilled water, and PDA/PCL scaffolds were immersed in the suspension and stirred (150 rpm) for 2 h. then the composite scaffolds were dried and the IGF-1 laden PLGA/PDA/PCL scaffolds were obtained.

## Physicochemical characterization

### Particle size

The nanoparticles were suspended in distilled water, and the nanoparticle diameter was tested using a Malvern particle diameter analyzer(Malvern Instruments, Mastersizer 2000, UK).

### Loading efficiency (LE) and encapsulation efficiency (EE)

PLGA nanoparticles (5 mg) were resuspended in NaOH solution (0.04 M, 10 ml) on an orbital shaker at constant 110 rpm gentle shaking at 37 °C for 12 hours. A micro bicinchoninic acid (BCA) protein assay kit (Fanbo Biochemicals, Beijing, China) was used for quantitative measurement of IGF-1 loaded in the PLGA nanoparticles. Blank PLGA nanoparticles were used as control. LE and EE of the particles were calculated using the following equations:

$LE = \text{mass of IGF-1 contained in PLGA nanoparticles} / \text{total mass of PLGA nanoparticles} \times 100\%$ .

$EE = \text{mass of encapsulated IGF-1} / \text{total mass of encapsulated and unencapsulated IGF-1} \times 100\%$ .

### SEM

The pure PCL, PDA/PCL, blank PLGA/PDA/PCL and IGF-1 laden PLGA/PDA/PCL scaffolds were sputtered with a thin layer of gold, respectively, and then the surface morphology were tested by scanning electron microscopy. (SEM; Hitachi S4800 SEM)

### Pore size and porosity

The scaffolds were sectioned, embedded in glycol methacrylate (Polysciences, Warrington, PA, USA), and stained with toluidine blue. The stained images were used to calculate pore size and porosity of the scaffolds using pore topology analyzer software (MATLAB, Natick, MA, USA).<sup>15</sup>

### Compression testing

The compression testing of the scaffold was performed using a mechanical testing machine (INSTRON 5566) with a constant loading rate of 1.0 mm/min, to evaluate the mechanical strength of the prepared scaffolds.

## Contact angle

The same amount of water was placed on the surface of each scaffold, and then the contact angle was measured using an Automatic Contact Angle Meter instrument (KINO SL200B/K Series, USA).

## IGF-1 release kinetics of the composite scaffolds

To examine the IGF-1 release profile, IGF-1 loaded composite scaffolds ( $\pi \times 3^2 \times 1$  mm<sup>3</sup>) were placed in a 10,000 Da bag filter and incubated in 10 ml of 10 mM phosphate-buffered saline medium (pH 7.4) in a shaking water bath at 37 °C, respectively. At 6, 12, 24, 36 hours, and 2–6 days, samples were collected, and the medium was replaced with an equal volume of fresh buffer. IGF-1 concentrations in the collected samples were measured using an IGF-1 ELISA kit. Measurements were carried out three times.

## Cell culture studies

### Isolation and Culture of Chondrocytes and rBMSCs

According to our previous studies,[18] rabbit bone marrow-derived mesenchymal stem cells (rBMSC) were obtained from the posterior superior iliac spine of the New Zealand white rabbits (4–6 months old) through the bone marrow puncture procedure aseptically, and then were isolated and cultured in a DMEM supplemented with 10% FBS and 1% penicillin–streptomycin at 37 °C under 5% CO<sub>2</sub>. The medium was exchanged every 2–3 days.

Based on our previous study,[24] rabbit chondrocytes were isolated from the cartilage of the proximal side of the joint, washed in PBS, and incubated with collagenase type 1a overnight in Dulbecco's modified Eagle medium (DMEM). The cell pellets were centrifuged at 1500 rpm for 5 min and suspended in fresh media. The chondrocytes were then cultivated in DMEM (Thermo Fisher Scientific, USA) containing 10% (v/v) fetal calf serum (Thermo Fisher Scientific, USA) and 1% (v/v) penicillin–streptomycin (Thermo Fisher Scientific, USA) at 37 °C under 5% CO<sub>2</sub>.

### Cells Seeding on the Scaffolds

The scaffolds were sterilized for 1 h using UV radiation. At first, fresh media without cells was added to maintain scaffolds in a physiological environment. Samples were then incubated at 37 °C under 5% CO<sub>2</sub> for 30 min. rBMSCs and chondrocytes were seeded onto the PCL, PDA/PCL, blank PLGA/PDA/PCL and IGF-1-PLGA/PDA/PCL scaffolds, respectively. Media was subsequently changed daily, and samples were cultured under standard conditions.

## CCK-8

For cell proliferation assays, chondrocytes and rBMSCs were seeded at a density of  $5 \times 10^4$  cells/ml in wells of a 96-well plate containing scaffold samples and cultured for 1, 3, 5, 7 d, respectively. Subsequently, the scaffolds with cells were transferred to a new culture plate and were incubated in 10% CCK-8 solution in a 37 °C and 5% CO<sub>2</sub> incubator for 1.5 h. Cell activity was evaluated using a cell counting kit (CCK-8, Sigma-Aldrich) according to the manufacturer's instructions. The absorbance at 450 nm of the sample solutions was measured by a microplate reader. (Synergy 2; BioTek, USA).

## Live/dead

The viability of rBMSCs and chondrocytes seeded onto the different scaffolds was assessed using a Live/Dead kit (Life Technologies, USA). Cells at a density of  $5 \times 10^4$  cells/ml were added to wells of a 96-well plate containing the scaffolds and cultured for 1 day. Then, the scaffolds were washed with PBS. 2 ml PBS containing  $2 \times 10^{-6}$  M calcein AM and  $4 \times 10^{-6}$  M EthD-1 solution was prepared as the staining solution. Then, a 400 µl staining solution was added to the scaffolds and incubated for 30 min at 37 °C in the dark. The samples were then washed in PBS buffer solution twice. Images were captured using a confocal microscope (Leica TCS SP2 confocal microscope; Leica, Mannheim, Germany). Live cells were stained green and dead cells were stained red.

## MTT

The Vybrant® MTT Cell Proliferation Assay Kit (Thermo Fisher Scientific, USA) was used to assess biocompatibility of the scaffolds and cell proliferation 1, 3, 5, and 7 days after seeding. We added 0.25% trypsin to BMSC/scaffolds and chondrocytes/scaffolds composites to get the cells from scaffolds. Then, the solutions were centrifuged at 1200 rpm for 5 min. The supernatant was then removed and 100 µl phenol-free DMEM and 10 µl of MTT reagent were added to the cell pellets. Cell pellets were incubated at 37 °C and 5% CO<sub>2</sub> for 4 h. Then, 25 µl of dimethyl sulfoxide (DMSO) was added, and cell pellets were incubated for another 20 min. The solution was transferred to 96-well discs. Absorbance readings at 570 nm were recorded using a Benchmark Plus microplate spectrophotometer (Bio-Rad, Tokyo, Japan).

## GAG

Based on our previous studies[24], GAG content of each chondrocytes/scaffolds and rBMSCs/scaffolds composites at 7 and 14 days after seeding were analyzed by sulfated glycosaminoglycan assay (Biocolor, UK). An ultraviolet spectrophotometer was used to quantitatively determine GAG content by measuring the absorption at 656 nm, and the values of GAG content were calculated based on a standard curve. All experiments were normalized to the total protein content determined from the BCA Protein Assay Kit (Beyotime, China), which were independently performed in triplicate.

## Gene expression evaluation

To evaluate the mRNA transcript levels of chondrocytes specific genes (SOX-9, COL-II, N-cadh and ACAN), chondrocytes and rBMSCs were cultured on the scaffolds for 7 and 14 days and processed for total RNA extraction by using a trizol kit (Ambion, CA) according to the manufacturer’s instructions, and the concentration of RNA was determined at 260 nm with a multifunction microplate reader (Synergy 2; BioTek, USA). The cDNA was reverse-transcribed using All-In-One RT MasterMix (ABM, CA), and quantitative real-time polymerase chain reaction (qRT-PCR) was performed using EvaGreen 2 × qPCR MasterMix (ABM, CA) with a Light Cyclor 480 II (Roche, CHE). To study the underlying mechanism of IGF-1 promoting chondrogenesis, the expression level of HIF-1α was examined. Chondrocytes and rBMSCs were cultured on the scaffolds for 24 h, and then qRT-PCR analysis was performed as described above. GAPDH was used as the housekeeping gene for normalization. Primer sequences are listed in Table 1.

Gene	Forward primer	Reverse primer
GAPDH	5'-TCACCATCTTCCAGGAGCGA-3'	5'-CACAATGCCGAAGTGGTCGT-3'
SOX-9	5'-GGTGCTCAAGGGCTACGACT-3'	5'-GGGTGGTCTTTCTTGTGCTG-3'
COL-II	5'-AACACTGCCAACGTCCGAT-3'	5'-CTGCAGCACGGTATAGGGA-3'
N-cadh	5'-TCATCTTCGTTTCCATTGGA-3'	5'-TAAGAACTCTGTAAGTTTTGGCAGC-3'
ACAN	5'-AGGTCGTGGTGAAAGGTGTTG-3'	5'-GTAGGTTCTCACGCCAGGGA-3'
HIF-1α	5'-CCATGTGACCATGAGGAAAT-3'	5'-CGGCTAGTTAGGGTACACTT-3'

Table 1  
Forward and reverse primer sequences used for reverse transcriptase PCR

## Statistical Analysis

All statistical analyses were performed using SPSS 18.0 statistical software and all analysis was expressed as means ± standard deviation (SD). Multiple sets of data were analyzed using one-way ANOVA with a post hoc test, and differences between 2 groups were analyzed by t test. p<0.05 was considered statistically significant.

## Results

### Characteristics of the IGF-1 laden nanoparticles and composite scaffolds

After coating of the PCL scaffolds with PDA, the PCL scaffold color changed from white to black (Fig. 1a, 1b). With the adherence of the PLGA nanoparticles, no further change in the general color occurred. (Fig. 1c, 1d). Under SEM at low magnification, the prepared scaffolds with pores arranged in the 0°-90°-180° quadrate pattern showed no obvious differences in morphology or structure (Fig. 1e-1 h). At

high magnification, PCL scaffolds showed a smooth surface (Fig. 1i), while PDA/PCL scaffolds showed small, evenly distributed granules (Fig. 1j), and PLGA/PDA/PCL scaffolds had PLGA nanoparticles attached to the small granules (Fig. 1k, 1 l). There showed no significant difference in morphology between blank PLGA/PDA/PCL scaffold and IGF-1 laden PLGA/PDA/PCL scaffold at high magnification.

The mean diameter of the nanoparticle was  $121.77 \pm 2.39$  nm, which showed no difference between the blank PLGA nanoparticles and IGF-1 laden PLGA nanoparticles (Fig. 2a). Moreover, the LE of IGF-1 in PLGA nanoparticles achieved was about  $5.53\% \pm 0.12\%$ , and the EE was about  $61.26\% \pm 2.71\%$ .

The IGF-1 loading amount of the IGF-1 laden PLGA/PDA/PCL scaffolds was  $141.17 \pm 11.66$   $\mu$ g. From the release curves of the scaffolds shown in Fig. 2b, an initial burst release of IGF-1 was obvious, and the majority of drug (36.37%) was released within 3 days, followed by a slower, more sustained release for all drug-loaded nanoparticles PLGA/PDA/PCL scaffolds, with a cumulative release rate of 88.71% at 30 days.

Figure 2c shows that the scaffolds exhibit a regular, porous microstructure, and the pore size of the PCL, PDA/PCL, blank PLGA/PDA/PCL and IGF-1 PLGA/PDA/PCL composite scaffolds were  $523.81 \pm 20.66$   $\mu$ m,  $516.45 \pm 23.21$   $\mu$ m,  $507.25 \pm 24.39$   $\mu$ m, and  $518.57 \pm 26.17$   $\mu$ m, respectively, and the porosity of the PCL, PDA/PCL, blank PLGA/PDA/PCL and IGF-1 PLGA/PDA/PCL composite scaffolds were  $81.87\% \pm 3.17\%$ ,  $78.58\% \pm 2.86\%$ ,  $78.98\% \pm 3.13\%$ , and  $80.12 \pm 2.90\%$ , respectively (Fig. 2d), which showed no significant difference.

As shown in Fig. 2e, The compressive strength of the scaffolds was  $6.98 \pm 0.65$  MPa,  $7.35 \pm 0.77$  MPa,  $6.96 \pm 0.92$  MPa and  $7.14 \pm 0.59$  MPa, respectively, which showed no significant difference.

The contact angles of PCL, PDA/PCL, blank PLGA/PDA/PLGA and IGF-1 laden PLGA/PDA/PLGA scaffolds were  $85.92 \pm 3.17^\circ$ ,  $56.77 \pm 6.32^\circ$ ,  $48.29 \pm 3.86^\circ$  and  $47.53 \pm 4.81^\circ$ , which showed significant difference. (Fig. 2f)

## Cell survival, viability and proliferation on all prepared scaffolds

Live/dead staining of rBMSCs seeded on the different scaffolds after 1 day in culture revealed that almost no dead rBMSCs existed on IGF-1 laden PLGA/PDA/PLGA scaffolds, and more cells were present on the PDA/PCL and PLGA/PDA/PCL scaffolds than on the pure PCL scaffold. (Fig. 3a-3d) Similarly, IGF-1 laden PLGA/PDA/PCL scaffolds had obviously more chondrocytes attached than the other three scaffolds. (Fig. 3e-3f)

The CCK-8 assay showed that the increase in the number of cells over time with all scaffold samples indicated that all of the prepared scaffolds were non-toxic to the cells (Fig. 3i, 3j). On day 1,3,5,7, the OD values, representing cell number, increased with increasing culture time in all groups, and for the IGF-1



laden PLGA/PDA/PCL scaffold group displayed a significantly higher OD value than that for the other three groups. (Fig. 3i, 3j)

The MTT assay results showed higher cell proliferation in IGF-1 laden PLGA/PDA/PCL scaffolds at 5 and 7 days compared to other three scaffolds. (Fig. 3k, 3 l)

## GAG assay

The results of GAG content are shown in Fig. 4, normalized to total protein content of rBMSCs and chondrocytes cultured on the 4 kinds of scaffolds. Both in rBMSCs and chondrocytes, the GAG contents/protein ratios increased with time in all scaffolds and was higher in IGF-1 PLGA/PDA/PCL scaffolds than in other three scaffolds (Fig. 4a, 4 g).

## Gene expression evaluation

As shown in Figure 4, all chondrogenic gene expression markers (SOX-9, COL-II, N-cadh and ACAN) showed increasing trends in all scaffolds, while the expression levels were significantly higher in IGF-1 laden PLGA/PDA/PCL scaffolds on days 7 and 14 compared to other groups. (Figure 4b-4e, 4h-4k). The highest gene expression in IGF-1 laden PLGA/PDA/PCL scaffolds correspond to the most significant GAG content result in this group.

To examine the underlying mechanism of IGF-1 promoting chondrogenesis, the HIF pathway related gene was analyzed. qRT-PCR results showed that the expression of HIF-1 $\alpha$  was significantly elevated in IGF-1 laden PLGA/PDA/PCL cultured group as compared to pure PCL, PDA/PCL and blank PLGA/PDA/PCL groups. (Figure 4f, 4l)

## Discussion

Various in vitro and in vivo studies have focused on scaffolds for cartilage regeneration and have achieved some success,[25] but long-term results are still controversial, as chondrocyte phenotype alteration and fibrocartilage formation occur.[26] Improvement of scaffolds is needed to provide a better environment for chondrogenesis.

3D-printed PCL scaffolds with good bio-function and cells-scaffold interaction have been widely used in cartilage engineering.[27, 28] However, PCL has poor cell affinity due to its hydrophobic surface and lack of cell biological recognition.[29] It has been suggested that the PDA coating not only changes the hydrophobicity of PCL, but also significantly increases cell adhesion to the scaffold.[30] Lower contact angle showed better hydrophilicity, as rBMSCs and chondrocytes were cultured in an aqueous environment.[2] Our results show that the incorporation of PDA and PLGA nanoparticles into the PCL scaffold significantly decreased the contact angle of the pure PCL which can provided a much better biomimetic extracellular matrix (ECM) microenvironment. While the pore size, porosity and compressive

strength were retained, which provide an appropriate pore space to facilitate cell infiltration and nutrition supply, and is suitable to withstand the forces on the joint.[2, 31, 32] The CCK-8 assay and live/dead test showed that more cells were adhered to the PLGA/PDA/PCL and PDA/PCL scaffolds than to the pure PCL scaffolds, also indicated by higher expression of cell adhesion molecules, which was consistent with the bioadhesive capacity of PDA.[2, 18]

Despite a growing interest in the development of composite scaffolds for drug delivery, there is a need for a carrier to provide a controlled release of bioactive factors.[33] The nanocarrier material PLGA which has a good bio-security has gained much attention.[34] In the present study, the release profile of IGF-1 laden PLGA/PDA/PCL composite scaffold showed a sharp initial burst release for 3 days, followed by a slowly sustained release for over 30 days, which indicated that it can provide a sustained chondrogenic induction effect during the process of cartilage healing. The burst phase may be caused by the rapid diffusion of surface-bound drug, whereas the lag phase may be determined by the dissolution of PLGA materials and release of the drug from the inner part of the nanoparticles.[35, 36]

In addition, The CCK-8, MTT and Live/Dead analysis revealed that the released IGF-1 had no cytotoxicity, and showed that more cells were adhered to the IGF-1 laden PLGA/PDA/PCL scaffolds than the other groups. It has been demonstrated that IGF-I is an important factor in preservation of articular cartilage and can stabilize the chondrogenic potential of chondrocytes.[37] An IGF-I deficiency is responsible for the degree of severity of osteoarthritic lesions,[38] and IGF-I is the cartilage matrix degrading enzyme that down-regulates the IL-1-stimulated mRNA expression of MMP1, -3, -8 and -13 in human chondrocytes.[37, 39]

Our study showed that the GAG content in the IGF-1 PLGA/PDA/PCL group was significantly higher than in the other groups, and qRT-PCR results showed that the IGF-1 laden PLGA/PDA/PCL scaffold group had the highest chondrocyte specified genes expression of N-cadh, COL-II, ACAN, and SOX9, which indicated its higher chondrogenic capacities than the other scaffolds. It has been demonstrated[2] that SOX9 can upregulate the expression of COL-II and ACAN, and the enhanced expression of COL-II and ACAN provides better new matrix synthesis and deposition for cartilage repair, of which the main part is GAG. In our study, the highest GAG content and significantly increased COL-II expression in IGF-1 laden PLGA/PDA/PCL scaffold group indicated a massive accumulation of GAG and possibly enhanced synthesis of collagen II, and also indicated that the microenvironment around the composite scaffold was remodeled with these newly formed chondrocyte ECM proteins, subsequently providing a suitable environment for proliferation and differentiation of chondrocytes and rBMSC, ultimately preventing OA deterioration, and assisting cartilage regeneration as reported by previous studies.[24, 40–45]

It has been reported that the significantly increased chondrogenic expressions (SOX9, ACAN, N-cadh and COL-II) might be regulated by the activated hypoxia-inducible factor pathway and could affect the cell behaviors and support energy regeneration of chondrocyte and rBMSC, as previously reported.[24, 44] However, HIF pathway is closely related to the chondrocytes maturation and cartilage regeneration.[42, 47, 48] To verify this hypothesis, the expression of HIF-1 $\alpha$  in chondrocytes and BMSC cultured in the

scaffolds were carefully analyzed. It was found that the expression of HIF-1 $\alpha$  in IGF-1 laden PLGA/PDA/PCL group was markedly enhanced as compared to other groups. As revealed in previous reports, the activated HIF pathway was able to stimulate the expression of ACAN, COL II, and the SOX9 production to support energy regeneration and matrix synthesis for cartilage regeneration,[48–50] which was consistent with our results. Consequently, it is probable that the potential mechanism for IGF-1 promoting chondrogenesis may be closely related to the activated hypoxia-inducible HIF pathway.

In conclusion, the IGF-1 laden PLGA/PDA/PCL scaffold was successfully fabricated in our study, and our results showed its better capacity of chondrogenesis, which may be a better method for sustained IGF-1 administration and a promising scaffold for cartilage tissue engineering.

## **Declarations**

## **Ethics approval and consent to participate**

This study was approved by the ethics committee of Nanjing First Hospital.

## **Consent for publication**

Not applicable.

## **Availability of data and material**

The datasets used and/or analyzed during the current study are available from the corresponding author on reasonable request.

## **Competing interests**

The authors declare that they have no competing interests.

## **Funding**

Not funded.

## **Authors' contributions**

PW, YX and LW conceived and designed the experiment. PW and YX performed the experiments. PW, YX and YG analyzed and interpreted the data. PW prepared the manuscript. LW, YX, JL and QY reviewed the

manuscript. PW, YX and LW are responsible for the integrity of the data. And LW approved the final version of the manuscript. All authors have read and approved the final submitted manuscript.

## Acknowledgements

We would like to thank all the participants who took part in this research for their time and help.

## References

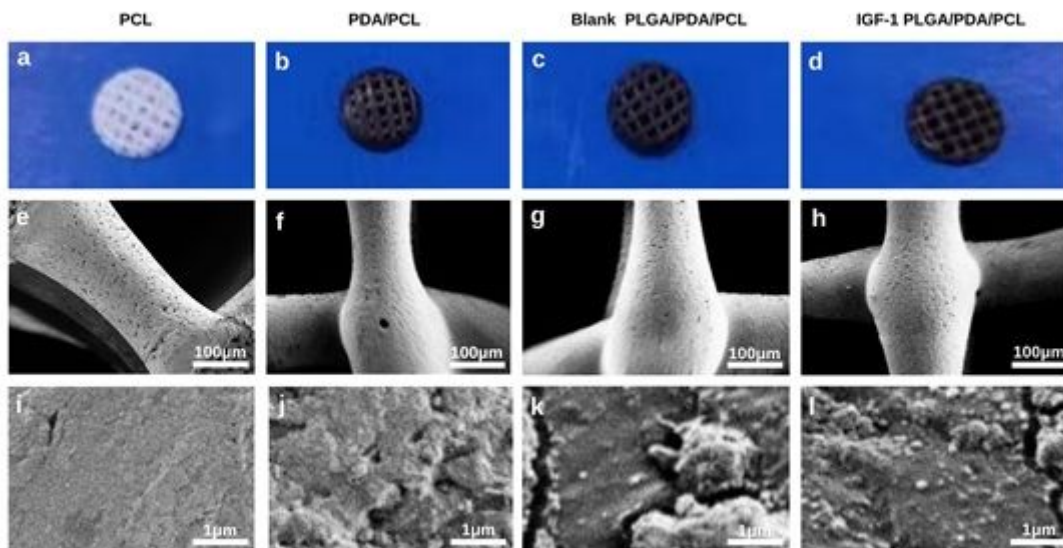
1. Armiento AR, Stoddart MJ, Alini M, Eglin D. (2018) *Biomaterials for articular cartilage tissue engineering. Learning from biology. Acta Biomater*, 65, 1–20.
2. Li J, Yao Q, Xu Y, Zhang H, Li Li WL. Lithium Chloride-Releasing 3D Printed Scaffold for Enhanced Cartilage Regeneration. *Med Sci Monit*. 2019;25:4041-50. [0](#).
3. Huat TJ, Khan AA, Pati S, Mustafa Z, Abdullah JM, Jaafar H. IGF-1 enhances cell proliferation and survival during early differentiation of mesenchymal stem cells to neural progenitor-like cells. *BMC Neurosci*. 2014;15(1):91. [0](#).
4. Svegliati-Baroni G, Ridolfi F, Di Sario A, **et al.** (1999) Insulin and insulin-like growth factor-1 stimulate proliferation and type I collagen accumulation by human hepatic stellate cells: differential effects on signal transduction pathways. *Hepatology*, 29(6), 1743-51.
5. Herchenhan A, Bayer ML, Eliasson P, Magnusson SP, Kjaer M. Insulin-like growth factor I enhances collagen synthesis in engineered human tendon tissue. *Growth Horm IGF Res*. 2015;25(1):13-9.. [0](#).
6. Li P, Wei J, Gao X, **et al.** (2017) **Insulin Promotes the Proliferation of Human Umbilical Cord Matrix-Derived Mesenchymal Stem Cells by Activating the Akt-Cyclin D1 Axis.** *Stem Cells Int*, 2017, 1-10.
7. Hansen M, Boesen A, Holm L, Flyvbjerg A, Langberg H, Kjaer M. (2013) **Local administration of insulin-like growth factor-I (IGF-I) stimulates tendon collagen synthesis in humans.** *Scand J Med Sci Sports*, 23(5), 614-9.
8. Ramos DM, Abdulmalik S, Arul MR, **et al.** Insulin immobilized PCL-cellulose acetate micro-nanostructured fibrous scaffolds for tendon tissue engineering. *Polym Adv Technol*. 2019;30(5):1205-15. [0](#).
9. Wright NT, Humphrey JD. Denaturation of collagen via heating: an irreversible rate process. *Annu Rev Biomed Eng*. 2002;4:109 – 28.. [0](#).
10. Nixon AJ, Fortier LA, Williams J, Mohammed H. Enhanced repair of extensive articular defects by insulin-like growth factor-I-laden fibrin composites. *J Orthop Res*. 1999;17(4):475 – 87. [0](#).
11. Tuncel M, Halici M, Canoz O, **et al.** Role of insulin like growth factor-I in repair response in immature cartilage. *Knee*. 2005;12(2):113-9. [0](#).
12. Elisseeff J, McIntosh W, Fu K, Blunk B, Langer R. Controlled-release of IGF-1 and TGF-beta1 in a photopolymerizing hydrogel for cartilage tissue engineering. *J Orthop Res*. 2001;19(6):1098 – 104. [0](#).

13. Fortier LA, Lust G, Mohammed HO, Nixon AJ. Coordinate upregulation of cartilage matrix synthesis in fibrin cultures supplemented with exogenous insulin-like growth factor-I. *J Orthop Res*. 1999;17(4):467 – 74.. [0](#).
14. Holland TA, Tabata Y, Mikos AG. Dual growth factor delivery from degradable oligo(poly(ethylene glycol) fumarate) hydrogel scaffolds for cartilage tissue engineering. *J Control Release*. 2005;101(1–3):111–25.. [0](#).
15. Mullen LM, Best SM, Brooks RA, **et al**. Binding and release characteristics of insulin-like growth factor-1 from a collagen-glycosaminoglycan scaffold. *Tissue Eng Part C Methods*. 2010;16(6):1439–48. [0](#).
16. Martins C, Sousa F, Araújo F, Sarmento B. Functionalizing PLGA and PLGA Derivatives for Drug Delivery and Tissue Regeneration Applications. *Adv Healthc Mater*. 2018;7(1):1701035. [0](#).
17. Wang F, Ni B, Zhu Z, Liu F, Zhu Y, Liu J. Intra-discal vancomycin-loaded PLGA microsphere injection for MRSA discitis: an experimental study. *Arch Orthop Trauma Surg*. 2011;131(1):111–9.. [0](#).
18. Zhou Z, Yao Q, Li L, **et al**. Antimicrobial Activity of 3D-Printed Poly(ε-Caprolactone) (PCL) Composite Scaffolds Presenting Vancomycin-Loaded Polylactic Acid-Glycolic Acid (PLGA) Microspheres. *Med Sci Monit*. 2018;24:6934–45. [0](#).
19. Wu S, Liu X, Yeung KWK, Liu C, Yang X. Biomimetic porous scaffolds for bone tissue engineering. *Mater Sci Eng R Rep*. 2014;80:1–36. [0](#).
20. Cox SC, Thornby JA, Gibbons GJ, Williams MA, Mallick KK. 3D printing of porous hydroxyapatite scaffolds intended for use in bone tissue engineering applications. *Mater Sci Eng C Mater Biol Appl*. 2015;47:237 – 47.. [0](#).
21. Malikmammadov E, Tanir TE, Kiziltay Ay, Hasirci V, Hasirci N. PCL and PCL-based materials in biomedical applications. *J Biomater Sci Polym Ed*. 2018;29:863 – 93. [0](#).
22. *Makris EA, Hadidi P, Athanasiou KA. (2011) The knee meniscus: structure-function, pathophysiology, current repair techniques, and prospects for regeneration. Biomaterials, 32(30), 7411–31.*
23. Ho CC, Ding SJ. Structure, properties and applications of mussel-inspired polydopamine. *J Biomed Nanotechnol*. 2014;10(10):3063–84.. [0](#).
24. Li L, Li J, Guo J, **et al**. (2019) **3D molecularly functionalized cell-free biomimetic scaffolds for osteochondral regeneration**. *Adv Funct Mater*, 29(6), **1807356.1–1807356.12**.
25. Fisher MB, Henning EA, Soegaard NB, Dodge GR, Steinberg DR, Mauck RL. Maximizing cartilage formation and integration via a trajectory-based tissue engineering approach. *Biomaterials*. 2014;35(7):2140–8.. [0](#).
26. **26.** Ng JJ, Wei Y, Zhou B, **et al**. (2017) Recapitulation of physiological spatiotemporal signals promotes in vitro formation of phenotypically stable human articular cartilage. *Proc Natl Acad Sci USA*, 114(10), 2556–61.
27. Dao T, Vu N, Pham L, **et al**. In Vitro Production of Cartilage Tissue from Rabbit Bone Marrow-Derived Mesenchymal Stem Cells and Polycaprolactone Scaffold. *Adv Exp Med Biol*. 2019;1084:45–60. [0](#).

28. Zhang Z, Wang S, Zhang J, **et al**. 3d-printed poly( $\epsilon$ -caprolactone) scaffold augmented with mesenchymal stem cells for total meniscal substitution: a 12- and 24-week animal study in a rabbit model. *Am J Sports Med*. 2017;45:1497 – 511. [0](#).
29. Tallawi M, Rosellini E, Barbani N, **et al**. Strategies for the chemical and biological functionalization of scaffolds for cardiac tissue engineering: A review. *J R Soc Interface*. 2015;12(108):20150254. [0](#).
30. Jo S, Kang SM, Park SA, Kim WD, Kwak J, Lee H. Enhanced adhesion of preosteoblasts inside 3D PCL scaffolds by polydopamine coating and mineralization. *Macromol Biosci*. 2013;13(10):1389-95. [0](#).
31. Murphy CM, Duffy GP, Schindeler A, O'Brien FJ. Effect of collagen-glycosaminoglycan scaffold pore size on matrix mineralization and cellular behavior in different cell types. *J Biomed Mater Res A*. 2016;104(1):291–304.. [0](#).
32. Li Y, Zhang Z. Sustained curcumin release from PLGA microspheres improves bone formation under diabetic conditions by inhibiting the reactive oxygen species production. *Drug Des Devel Ther*. 2018;12:1453-66. [0](#).
33. Wang X, Zhang G, Qi F, **et al**. Enhanced bone regeneration using an insulin-loaded nano-hydroxyapatite/collagen/PLGA composite scaffold. *Int J Nanomedicine*. 2018;13:117 – 27. [0](#).
34. Wang J, Xu Y, Fu Q, **et al**. Continued sustained release of VEGF by PLGA nanospheres modified BAMG stent for the anterior urethral reconstruction of rabbit. *Asian Pac J Trop Med*. 2013;6(6):481-4. [0](#).
35. Hickey T, Kreutzer D, Burgess DJ, Moussy F. Dexamethasone/plga microspheres for continuous delivery of an anti-inflammatory drug for implantable medical devices. *Biomaterials*. 2002;23(7):1649-56. [0](#).
36. Dawes GJ, Fratila-Apachitei LE, Necula BS, **et al**. Effects of dexamethasone-loaded PLGA microspheres on human fetal osteoblasts. *J Biomater Appl*. 2012;27(4):477 – 83. [0](#).
37. Claassen H, Schicht M, Paulsen F. Impact of sex hormones, insulin, growth factors and peptides on cartilage health and disease. *Prog Histochem Cytochem*. 2011;45(4):239 – 93. [0](#).
38. Ekenstedt KJ, Sonntag WE, Loeser RF, Lindgren BR, Carlson CS. Effects of chronic growth hormone and insulin-like growth factor 1 deficiency on osteoarthritis severity in rat knee joints. *Arthritis Rheum*. 2006;54(12):3850-8.. [0](#).
39. Hui W, Rowan AD, Cawston T. Insulin-like growth factor 1 blocks collagen release and down regulates matrix metalloproteinase-1, -3, -8, and -13 mRNA expression in bovine nasal cartilage stimulated with oncostatin M in combination with interleukin 1alpha. *Ann Rheum Dis*. 2001;60:254 – 61. [0](#).
40. Pap T, Bertrand J. Syndecans in cartilage breakdown and synovial inflammation. *Nat Rev Rheumatol*. 2013;9(1):43–55. [0](#).
41. Morgan TG, Rowan AD, Dickinson SC, **et al**. Human nasal cartilage responds to oncostatin M in combination with interleukin 1 or tumour necrosis factor alpha by the release of collagen fragments via collagenases. *Ann Rheum Dis*. 2006;65(2):184 – 90. [0](#).

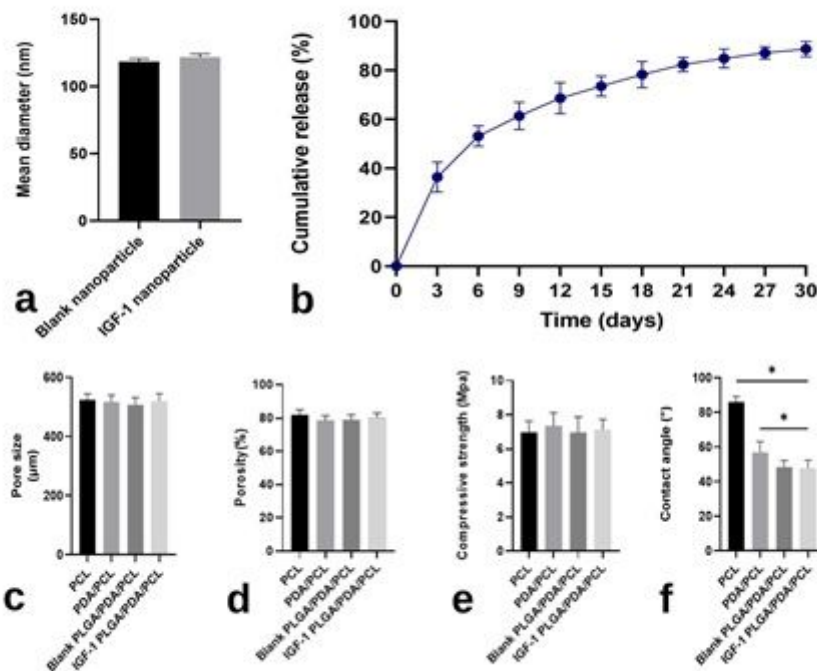
42. Deng C, Yao Q, Feng C, **et al.** 3D printing of bilineage constructive biomaterials for bone and cartilage regeneration. *Adv Funct Mater.* 2017;27:1703117. [DOI](#).
43. Li T, Jin C, Choi B, **et al.** Using cartilage extracellular matrix (cecm) membrane to enhance the reparability of the bone marrow stimulation technique for articular cartilage defect in canine model. *Adv Funct Mater.* 2012;22:4292. [DOI](#).
44. Eslaminejad MB, Karimi N, Shahhoseini M. Chondrogenic differentiation of human bone marrow-derived mesenchymal stem cells treated by GSK-3 inhibitors. *Histochem Cell Biol.* 2013;140(6):623 – 33. [DOI](#).
45. Tanthaisong P, Imsoonthornruksa S, Ngernsoungnern A, Ngernsoungnern P, Ketudat-Cairns M, Parnpai R. Enhanced Chondrogenic Differentiation of Human Umbilical Cord Wharton's Jelly Derived Mesenchymal Stem Cells by GSK-3 Inhibitors. *PLoS ONE.* 2017;12(1):0168059. [DOI](#).
46. Wan C, Gilbert SR, Wang Y, **et al.** Role of hypoxia inducible factor-1 alpha pathway in bone regeneration. *J Musculoskelet Neuronal Interact.* 2008;8(4):323-4. [DOI](#).
47. Gelse K, Mühle C, Knaup K, **et al.** Chondrogenic differentiation of growth factor-stimulated precursor cells in cartilage repair tissue is associated with increased HIF-1alpha activity. *Osteoarthr Cartil.* 2008;16(12):1457-65. [DOI](#).
48. Bouaziz W, Sigaux J, Modrowski D, **et al.** Interaction of hif1 $\alpha$  and  $\beta$ -catenin inhibits matrix metalloproteinase 13 expression and prevents cartilage damage in mice. *Proc Natl Acad Sci USA.* 2016;113(19):5453-8. [DOI](#).
49. Pfander D, Cramer T, Schipani E, Johnson R. HIF-1alpha controls extracellular matrix synthesis by epiphyseal chondrocytes. *J Cell Sci.* 2003;116:1819-26. [DOI](#).
50. Komatsu DE, Hadjiargyrou M. Activation of the transcription factor HIF-1 and its target genes, VEGF, HO-1, iNOS, during fracture repair. *Bone.* 2004;34(4):680-8. [DOI](#).

## Figures



**Figure 1**

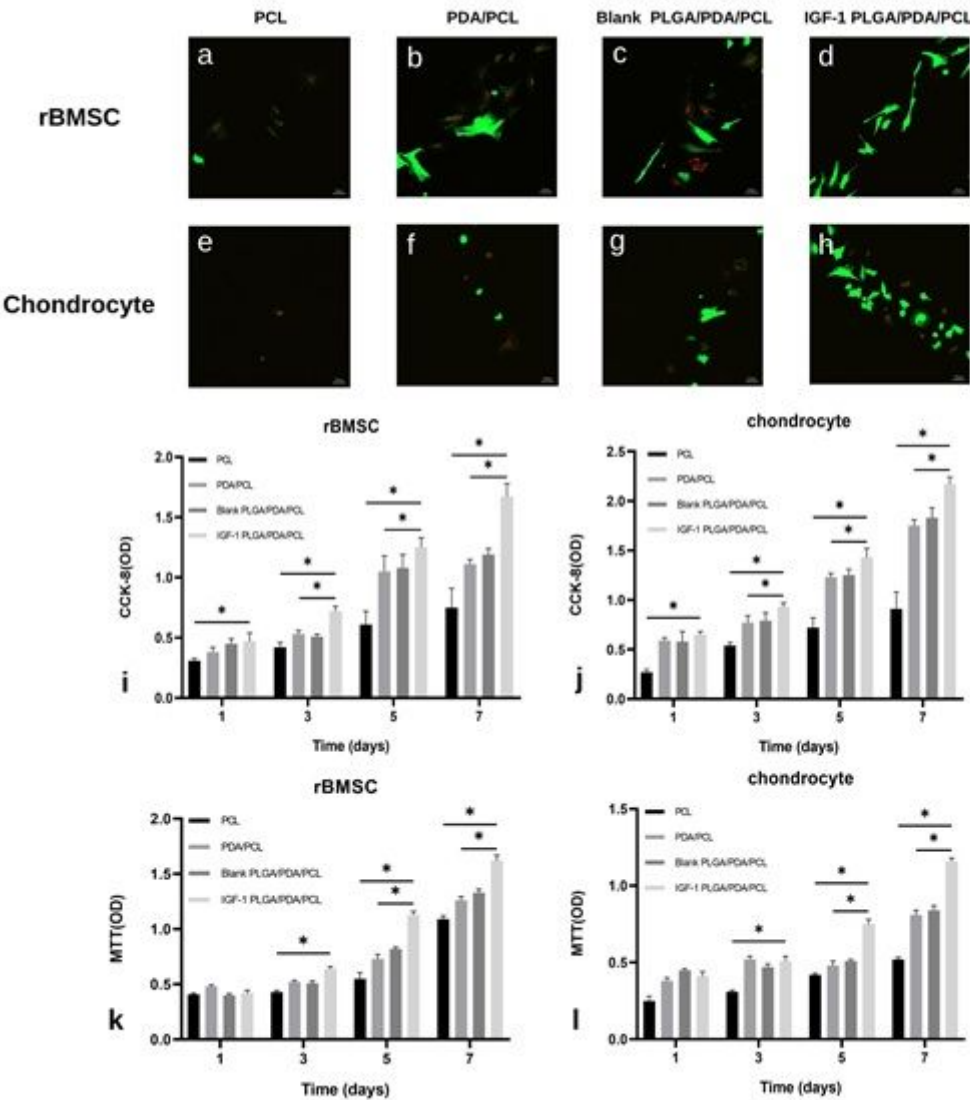
a-d, General appearance of the PCL, PDA/PCL, blank PLGA/PDA/PCL, IGF-1 PLGA/PDA/PCL scaffolds. e-l, SEM images of the PCL, PDA/PCL, blank PLGA/PDA/PCL, IGF-1 PLGA/PDA/PCL scaffolds.



**Figure 2**

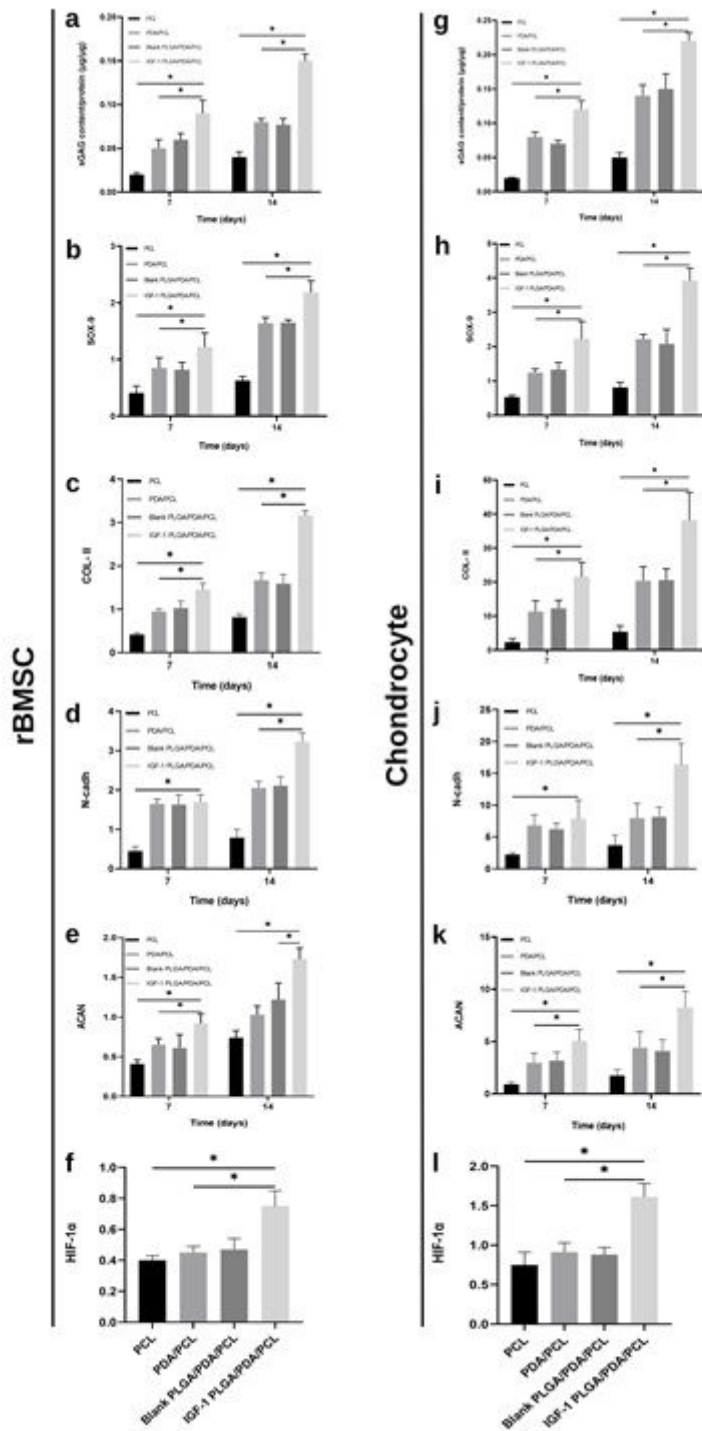


a, Mean diameter of the prepared nanoparticles. b, IGF-1 release kinetics of the fabricated IGF-1 laden PLGA/PDA/PCL composite scaffold. c, Pore size of each scaffolds. d, Porosity of each scaffold. e, Compressive strength of each scaffolds. f, Contact angle of each scaffold. \* P<0.05.



**Figure 3**

a-h, Confocal images of live/dead staining at day 1 of culture on the PCL, PDA/PCL, blank PLGA/PDA/PCL, IGF-1 PLGA/PDA/PCL scaffolds, showing live cells (green) and dead cells (red). i-j, Proliferation of rBMSCs and chondrocytes on each scaffold type as measured by CCK-8 assay. k-l, Biocompatibility analysis of the scaffolds by MTT. \* P<0.05.



**Figure 4**

a,g, GAG accumulation of rBMSC and chondrocytes on day 7 and 14 normalized to total protein concentration. b-d, h-k, Relative chondrogenic gene expression of SOX-9, COL-II, N-cadherin and ACAN on day 7 and 14 normalized to GAPDH expression. f,l, The expression of HIF-1α gene in IGF-1 PLGA/PDA/PCL scaffolds cultured rBMSC and chondrocytes. \* P<0.05.