

# ST-Segment Resolution as a Marker for Myocardial Scar in ST-Segment Elevation Myocardial Infarction

**Qian Dong**

The First Affiliated Hospital of Chongqing Medical University

**Xuesong Wen**

Chongqing Medical University

**Guanglei Chang**

The First Affiliated Hospital of Chongqing Medical University

**Rui Xia**

The First Affiliated Hospital of Chongqing Medical University

**Sihang Wang**

The First Affiliated Hospital of Chongqing Medical University

**Yunjing Yang**

The First Affiliated Hospital of Chongqing Medical University

**Yi Tao**

The First Affiliated Hospital of Chongqing Medical University

**Dongying Zhang**

The First Affiliated Hospital of Chongqing Medical University

**Qin Shu** (✉ [1296224271@qq.com](mailto:1296224271@qq.com))

The First Affiliated Hospital of Chongqing Medical University

---

## Research Article

**Keywords:** ST-Segment Resolution, ST-Elevation Myocardial Infarction, Percutaneous Coronary Intervention, Myocardial Scar

**Posted Date:** March 13th, 2021

**DOI:** <https://doi.org/10.21203/rs.3.rs-284856/v1>

**License:**   This work is licensed under a Creative Commons Attribution 4.0 International License.

[Read Full License](#)

---

# Abstract

**Objective:** To investigate the relationship between ST-segment resolution (STR) and myocardial scar thickness after percutaneous coronary intervention (PCI) in patients with ST-segment elevation myocardial infarction (STEMI).

**Methods:** Forty-two STEMI patients with single-branch coronary artery stenosis or occlusion were enrolled. ST-segment elevations were measured at emergency admission and at 24 h after PCI. Late gadolinium-enhanced cardiac magnetic resonance imaging (CMR-LGE) was performed 7 days after PCI to evaluate myocardial scars. Statistical analyses were performed to assess the utility of STR to predict the development of transmural (>75%) or non-transmural (<75%) myocardial scars.

**Results:** The sensitivity and specificity of STR for predicting transmural scars were 96% and 88%, respectively, at an STR cut-off value of 40.15%. The area under the curve was 0.92. Multivariate logistic proportional hazards regression analysis disclosed that patients with STR<40.15% had a 112.95-fold higher probability of developing transmural scars compared with patients with STR≥40.15%. STR percentage was negatively correlated with myocardial scar thickness ( $\beta=-0.838$ ,  $P<0.001$ ) and size ( $\beta=-0.714$ ,  $P<0.001$ ).

**Conclusion:** STR<40.15% at 24 h after PCI may provide meaningful diagnostic information regarding the extent of myocardial scarification in STEMI patients.

## Introduction

Transmural myocardial scars of the left ventricle that complicate ST-segment elevation myocardial infarction (STEMI) predispose to heart failure and cardiac death. Therefore, early identification and analysis of myocardial scars are particularly important[1]. The size and tissue heterogeneity of healing scars identified by late gadolinium-enhanced cardiac magnetic resonance imaging (CMR-LGE) are independent predictors of arrhythmia and sudden cardiac death[2–7]. CMR-LGE is the gold standard for the diagnosis of myocardial scar and assessment of myocardial salvage[8–11], but is expensive, time-consuming, unfit for wide population studies, and generally contraindicated in patients with cardiac implants. These disadvantages have restricted its clinical application.

Delayed ST-segment resolution (STR) is prevalent during major adverse cardiovascular events, and is predictive of arrhythmia, heart failure, and 30-day mortality[12]. We hypothesized that analysis of STR could represent a convenient, widely accessible, and inexpensive diagnostic method for patients who cannot tolerate CMR-LGE. Consequently, the aim of our study was to establish whether poor STR, as well as CMR-LGE findings, can detect myocardial scarification in the early post-infarction period in STEMI patients.

## Methods

# Study design and population

Forty-two consecutive patients with STEMI treated with coronary angiography and percutaneous coronary intervention (PCI) within 12 h of the onset of pain were enrolled between March 2017 and October 2017. Inclusion criteria were (1) single-branch coronary artery stenosis or occlusion, and (2) restoration of coronary perfusion to TIMI flow grade 3 after PCI. Exclusion criteria were a prior history of the acute coronary syndrome; coronary revascularization; severe chronic kidney disease; intracardiac pacing leads or other implants precluding CMR-LGE; hemodynamic instability; or known claustrophobia. The study was performed at the First Affiliated Hospital of Chongqing Medical University, China. Demographic and clinical characteristics including ECG STR 24 h after PCI were recorded. CMR-LGE was performed 7 days after PCI. This study was conducted in accordance with the Declaration of Helsinki.

The research protocol was approved by the locally appointed Ethics Committee, and written informed consent was obtained from all study participants.

## CMR-LGE protocols

Patients were examined in the supine position using a 1.5-T imaging unit (Signa Infinity Twinspeed, General Electric Healthcare, USA) equipped with master gradients (30 mT/m peak gradients; 150 mT/m/ms slew rate) and a 5-element cardiac phased-array receiver coil. Images were obtained using electrocardiographic gating and expiratory breath holds. A dose of 0.2 mmol/kg of body weight of gadopentetate dimeglumine (Magnevist; Bayer Schering Health Care, Cambridge, UK) was administered intravenously at a rate of 5 ml/s with a power injector. Ten minutes after contrast agent injection, a Look-Locker sequence was performed to obtain the most appropriate inversion time to nullify the signal intensity of normal myocardium. The left ventricular short-axis imaging layer was 8 mm thick and 0 mm apart. The left ventricular 2-chamber and 4-chamber scanning imaging layers were 5 mm thick and 0 mm apart. This was immediately followed by the acquisition of LGE images, with an inversion recovery prepared T1-weighted gradient-echo sequence (4.9/1.9; flip angle, 15 degrees; turbo field-echo factor, 30; spatial resolution, 1.35×1.35×10 mm). Late gadolinium enhancement was interpreted as present or absent by the consensus of two CMR-trained physicians, and was considered present only if confirmed on both short-axis and matching long-axis myocardial locations.

First, we marked the segments of the myocardial scar with the bull's eye segmental comparison (17-segment model) and compared them with the results of coronary angiography. Second, we searched for the thickest myocardial scar layer-by-layer on the short axis imaging and calculated the percentage of the thickness of the myocardial scar, which was defined as a transmural myocardial scar when the percentage was > 75%. Finally, we recorded the area of myocardial scar layer-by-layer on the short axis imaging and multiplied the thickness of the layer to determine the total volume of myocardial scar, and to calculate the percentage of myocardial scar volume.

## ECG protocols

Standard 18-lead ECGs were obtained at emergency admission and 24 h after coronary angiography and PCI. The TP segment was used as the isoelectric line in the ST-segment measurement. The ST segment was measured 20 ms after the J point. The summed ST-segment elevation was measured by adding the ST amplitude in all leads with ST-elevation at emergency admission and 24 h after PCI[13]. STR percentage was calculated as the initial sum of ST-segment elevation minus the sum of ST-segment elevation on the second ECG, divided by the initial sum of ST-segment elevation.

## Statistical analysis

Basic descriptive statistics were used. CMR-LGE location data were described on a patient-by-patient basis (Supplemental Fig. 1). Statistical analyses were performed to assess the clinical utility of using of STR to predict myocardial scarification. Myocardial scars were assessed using two measures: (1) scar thickness and (2) scar size. Receiver operating characteristic (ROC) curve analysis, logistic regression analysis, and multivariate logistic proportional-hazards regression estimated transmural myocardial scar. Scar thickness and size were estimated using linear regression and Student's *t*-test. All statistical analyses were performed using SPSS v.22.0 (IBM, Armonk, NY, USA). *P*-value < 0.05 was considered statistically significant.

## Results

### Location, size, thickness of the myocardial scar determined by CMR-LGE

Myocardial scars were diagnosed in 41 of 42 STEMI patients (96.7%) by using CMR-LGE. A patient-by-patient visual analysis of scar tissue location in the STEMI group, with bull's eye segmental comparison of CMR-LGE findings is shown in Supplemental Figure 1. In all patients, the anatomic locations of scars defined by CMR-LGE corresponded to the distributions of the culprit vessels treated with primary angioplasty. For example, in a patient with angiographically proven left anterior descending coronary artery occlusion, CMR-LGE indicated scarification of the basal and middle segments of the left anterior ventricular wall. In another patient with right coronary artery occlusion, CMR-LGE disclosed a scar that involved the entire inferior wall of the left ventricle and the middle and apical segments of the posterior interventricular septum (Figure 1). However, scar size and thickness were unrelated to the degree of coronary artery occlusion. Stenoses in all culprit arteries exceeded 90%; nonetheless, there were significant inter-patient differences in scar size and thickness ( $P < 0.001$ ).

### Determination of STR cut-off value

A transmural scar was defined as a myocardial lesion extending >75% of the wall thickness. All myocardial scars were classified as either non-transmural (0-75%) or transmural (76-100%) according to CMR-LGE results. The relationship of the ST-segment resolution percentage to transmural scarification was identified by the ROC curve. The ROC curve analysis demonstrated a sensitivity of 96% and a specificity of 88% to predict transmural myocardial scarification following STEMI at an STR cut-off value of 40.15%. The area under the curve was 0.92 (Figure 2).

## Patient characteristics of STR groups

Patients were divided into two groups: STR<40.15% (n=16) and STR≥40.15% (n=26). Compared with patients with STR≥40.15%, patients with STR<40.15% had significantly longer pain-to-balloon time; higher aspartate aminotransferase (AST), peak troponin-I, and brain natriuretic peptide (BNP) levels; lower left ventricular *ejection fraction* (LVEF); and a higher prevalence of diuretic therapy. Other characteristics such as age; gender; body mass index; histories of smoking, hypertension, and diabetes; hyperlipidemia; culprit artery; leukocyte, erythrocyte, and platelet counts; hemoglobin, hemoglobin A1(c), alanine aminotransferase (ALT), and creatinine levels; left ventricular diastolic diameter; the use of therapeutic drugs other than diuretics; and coronary care unit residence time were similar between the two groups (Table 1).

## Diagnostic value of STR<40.15% for transmural myocardial scar

In the logistic regression analysis, male gender (odds ratio [OR]=0.500, 95% confidence interval [CI] 0.234–1.068), history of diabetes (OR=0.333, 95% CI 0.108–1.034), LVEF (OR=0.520, 95% CI 0.341–0.792), and STR <40.15% (OR=15.0, 95% CI 1.981–113.556) were significant risk factors for transmural scars (Table 2).

Multivariate logistic proportional hazards regression analyses were used to evaluate the independent predictive value of STR<40.15%. After adjusting for age, gender, and pain-to-balloon time (Mode 1), the OR of STR<40.15% for transmural scar was 211.40 (95% CI 9.64–4636.69,  $P=0.001$ ). After adjusting for histories of smoking, hypertension, and DM (Mode 2), the OR was 280.14 (95% CI 12.42–6320.36,  $P<0.001$ ). After adjusting for BNP, peak troponin-I, and diuretic use (Mode 3), the OR was 6394.05 (95% CI 8.51–4807147.53,  $P=0.010$ ). After adjusting for LVEF and AST (Mode 4), the OR was 187.94 (95% CI 11.33–3116.99,  $P<0.001$ ). After adjusting for LVEF, smoking history, and peak troponin-I (Mode 5), the OR was 112.95 (95% CI 6.20–2059.35,  $P=0.001$ ). In aggregate, smoking history, peak troponin-I, and LVEF showed significance for predicting transmural scar (Table 3).

## Relationship between STR percentage and myocardial scar thickness and size

Linear regression analyses demonstrated negative correlations between STR percentage and both scar thickness ( $\beta = -0.838$ , 95% CI -1.182~ -0.774,  $P<0.001$ ) (Figure 3A) and size ( $\beta = -0.714$ , 95% CI -3.126~ -1.635,  $P<0.001$ ) (Figure 3B). In addition, compared with patients with STR>40.15%, patients with STR<40.15% had significantly thicker and larger scars (Figure 4A and Figure 4B).

## Discussion

Our study showed that ECG, as a convenient and non-invasive technique, can monitor the occurrence of transmural myocardial fibrosis after acute myocardial infarction. In our study, it is possible to detect myocardial scar by CMR-LGE at 7 days after PCI, even when PCI is performed within 12 h of the onset of pain. Many previous studies have focused on the correlation between STR in ECG and poor prognosis in

patients with MI, but no cutoff value and clinical markers have been formed. Our study attempted to quantify the predictive value of STR for transmural myocardial scar after STEMI using a small sample. In our study population, there were no statistically significant differences in gender, age, BMI, smoking history, hypertension history, diabetes history, hyperlipidemia history, culprit artery, number of stent implantation, hemogram, HbA1c, ALT, CCU time and the use of drugs including IIa/IIIb inhibitor, Aspirin, Ticagrelor/Clopidogrel, Statins,  $\beta$ -blocker, ACEI/ARB, Nitrates, Diuretics. However, compared with the STR  $\geq 40.15\%$  group, the incidence of transmural myocardial fibrosis was higher ( $P < 0.001$ ) and the size of myocardial scar was larger ( $P = 0.001$ ) in the STR  $< 40.15\%$  group, the difference was statistically significant (Table 1).

It is significant to quantify STR and apply such a convenient and non-invasive technique to the clinical monitoring of transmural fibrosis in myocardial infarction. Although CMR-LGE is the gold standard for the diagnosis of myocardial fibrosis, patients with cardiac scar often cannot tolerate CMR-LGE and other methods are needed to diagnose transmural scar. STR is a useful predictor of the final infarct size, left ventricular function, and clinical outcome after early reperfusion[14–16]. Nonetheless, the predictive value of STR is still controversial[17, 18]. Rakowski et al. showed that STR  $< 70\%$  is a marker of large infarct size[18]. However, the transmural depth of an infarction is more consequential than its size. To the best of our knowledge, there are no data to date on the relationship between STR and the transmural thickness of infarcted myocardium. Therefore, our study was focused on defining a specific cut-off value of STR for the diagnosis of transmural scars. We found that the predicted critical value of STR of a transmural myocardial scar after STEMI was 40.15%, with a sensitivity of 96% and a specificity of 88% (Figure. 2). Poor STR was related to thicker and larger scars (Figure. 3). Previous studies have reported relationships between STR and reduced myocardial perfusion and between early STR and myocardial rescue[19]. In addition, STR following PCI and restoration of perfusion to TIMI flow grade 3 was correlated with collateral circulation[20]. STR  $< 50\%$  may be associated with worse left ventricular function and increased mortality[11, 21]. These results are consistent with our findings, but our study found that patients with STR  $> 40.15\%$  had thinner and smaller myocardial scar.

STR is significant in monitoring the prognosis and treatment of transmural myocardial fibrosis after myocardial infarction. Transmural myocardial scars are caused by ischemic injury followed by fibrosis of necrotic tissue[1, 22–24]. Poor perfusion, limited myocardial salvage, and microvascular disease promote scarification. The severity and localization of ventricular wall injuries are also influenced by the length of coronary artery stenosis and the degree of collateral circulation[25–27]. The extent of myocardial fibrosis is an important determinant of prognosis. In STEMI, transmural MF usually leads to irreversible ventricular remodeling and heart failure, and is also the pathological basis for arrhythmias, and is generally considered to be associated with sudden cardiac death[28–31]. Nguyen et al. [32] found that the severity of myocardial fibrosis was significantly correlated with the frequency of ventricular arrhythmias ( $r = 0.83$ ,  $P < 0.01$ ). Our study showed that the STR  $< 40.15\%$  group had a higher incidence of transmural myocardial fibrosis, and no differences in the incidence of arrhythmias and readmission rate were found between the two groups, which may be related to the small sample size (Supplemental Fig. 2). Scientists' understanding of the mechanisms and consequences of cardiac fibrosis has only

improved greatly in recent years, with the improvement of non-invasive techniques to better track its development [33]. It is significant to explore the effect of STR on the prognosis of transmural myocardial fibrosis after myocardial infarction in a larger sample and a longer follow-up time.

The physiology of STR is related to the restoration of myocardial perfusion. Following PCI of epicardial coronary arteries, microvascular spasm and embolism may lead to persistent coronary microvascular dysfunction (CMD) and subsequently cause myocardial and especially endocardial ischemia. In the setting of CMD, extracellular potassium ion clearance is decreased, thus prolonging repolarization and delaying STR. Poor STR reflects microvascular and left ventricular dysfunction[17, 34, 35], and is thereby an important biomarker of CMD after PCI in STEMI patients. Inadequate perfusion due to CMD is the proximate cause of transmural myocardial injury; consequently, assessment of the severity of ischemia by monitoring dynamic ST-segment changes is of the utmost importance. In our study, it was found that compared with the group with  $STR \geq 40.15\%$ , the pain to balloon time was significantly prolonged ( $P = 0.001$ ), the left ventricular ejection fraction was significantly reduced ( $P < 0.001$ ), and the troponin and BNP were higher ( $P < 0.001$ ) in the group with  $STR < 40.15\%$ . The delay of opening time of effective coronary blood flow in  $STR < 40.15\%$  group may be an important reason for the aggravation of myocardial transmural injury and the formation of transmural myocardial fibrosis. Shortening the pain to balloon time may avoid or reduce the occurrence of poor STR, thus affecting the clinical prognosis of patients. There are several limitations of this study. First, this was a cross-sectional study with a relatively small number of patients. Second, it was difficult to recruit STEMI patients who were willing or able to undergo CMR-LGE 7 days after PCI. Third, because this study was limited to STEMI patients, cross-validation analysis is needed to determine whether delayed STR can be used to predict myocardial scarification in non-STEMI patients. Fourth, to verify the clinical effects of STR, longer clinical follow-up is needed, especially for the monitoring and follow-up of malignant arrhythmias. We found that STR correlated with myocardial scar thickness following STEMI. To the best of our knowledge, this is the first study to confirm that  $STR < 40.15\%$  after PCI can provide important prognostic information regarding myocardial fibrosis in STEMI patients. These results suggest that STR may represent a safe, readily accessible, easily administered, inexpensive diagnostic modality in the management of STEMI patients for whom CMR-LGE is contraindicated.

## Declarations

### Ethics approval

This study was registered in clinicaltrials.gov (Approval No. NCT04586582). The study was conducted in accordance with the "Declaration of Helsinki" and approved by the ethics committee of the first affiliated hospital of Chongqing medical university (approval No.2019-057). We followed ethical guidelines and obtained informed consent from the participants.

### Conflicts of interest

The authors declare that they have no conflicts of interest.

## Availability of data and material

The datasets used or analysed during the current study are available from the corresponding author on reasonable request.

## Funding

The study was supported by The First Affiliated Hospital of Chongqing Medical University Cultivation Fund (No. PYJJ 2017-35).

## References

1. Stone GW, Selker HP, Thiele H, Patel MR, Udelson JE, Ohman EM, Maehara A, Eitel I, Granger CB, Jenkins PL, Nichols M, Ben-Yehuda O (2016) Relationship Between Infarct Size and Outcomes Following Primary PCI: Patient-Level Analysis From 10 Randomized Trials. *J Am Coll Cardiol* 67(14):1674–1683. doi:10.1016/j.jacc.2016.01.069
2. Schmidt A, Azevedo CF, Cheng A, Gupta SN, Bluemke DA, Foo TK, Gerstenblith G, Weiss RG, Marban E, Tomaselli GF, Lima JA, Wu KC (2007) Infarct tissue heterogeneity by magnetic resonance imaging identifies enhanced cardiac arrhythmia susceptibility in patients with left ventricular dysfunction. *Circulation* 115(15):2006–2014. doi:10.1161/CIRCULATIONAHA.106.653568
3. Iles L, Pfluger H, Lefkovits L, Butler MJ, Kistler PM, Kaye DM, Taylor AJ (2011) Myocardial fibrosis predicts appropriate device therapy in patients with implantable cardioverter-defibrillators for primary prevention of sudden cardiac death. *J Am Coll Cardiol* 57(7):821–828. doi:10.1016/j.jacc.2010.06.062
4. Klem I, Weinsaft JW, Bahnson TD, Hegland D, Kim HW, Hayes B, Parker MA, Judd RM, Kim RJ (2012) Assessment of myocardial scarring improves risk stratification in patients evaluated for cardiac defibrillator implantation. *J Am Coll Cardiol* 60(5):408–420. doi:10.1016/j.jacc.2012.02.070
5. Bello D, Fieno DS, Kim RJ, Pereles FS, Passman R, Song G, Kadish AH, Goldberger JJ (2005) Infarct morphology identifies patients with substrate for sustained ventricular tachycardia. *J Am Coll Cardiol* 45(7):1104–1108. doi:10.1016/j.jacc.2004.12.057
6. Izquierdo M, Ruiz-Granell R, Bonanad C, Chaustre F, Gomez C, Ferrero A, Lopez-Lereu P, Monmeneu JV, Nunez J, Chorro FJ, Bodi V (2013) Value of early cardiovascular magnetic resonance for the prediction of adverse arrhythmic cardiac events after a first noncomplicated ST-segment-elevation myocardial infarction. *Circulation Cardiovascular imaging* 6(5):755–761. doi:10.1161/CIRCIMAGING.113.000702
7. Fernandez-Armenta J, Berruezo A, Mont L, Sitges M, Andreu D, Silva E, Ortiz-Perez JT, Tolosana JM, de Caralt TM, Perea RJ, Calvo N, Trucco E, Borrás R, Matas M, Brugada J (2012) Use of myocardial scar characterization to predict ventricular arrhythmia in cardiac resynchronization therapy. *Europace: European pacing, arrhythmias, and cardiac electrophysiology : journal of the working*



- groups on cardiac pacing, arrhythmias, and cardiac cellular electrophysiology of the European Society of Cardiology 14 (11):1578–1586. doi:10.1093/eupace/eus104
8. Wagner A, Mahrholdt H, Holly TA, Elliott MD, Regenfus M, Parker M, Klocke FJ, Bonow RO, Kim RJ, Judd RM (2003) Contrast-enhanced MRI and routine single photon emission computed tomography (SPECT) perfusion imaging for detection of subendocardial myocardial infarcts: an imaging study. *Lancet* 361(9355):374–379. doi:10.1016/S0140-6736(03)12389-6
  9. Bulluck H, Dharmakumar R, Arai AE, Berry C, Hausenloy DJ (2018) Cardiovascular Magnetic Resonance in Acute ST-Segment-Elevation Myocardial Infarction: Recent Advances, Controversies, and Future Directions. *Circulation* 137(18):1949–1964. doi:10.1161/CIRCULATIONAHA.117.030693
  10. Schulz-Menger J, Bluemke DA, Bremerich J, Flamm SD, Fogel MA, Friedrich MG, Kim RJ, von Knobelsdorff-Brenkenhoff F, Kramer CM, Pennell DJ, Plein S, Nagel E (2020) Standardized image interpretation and post-processing in cardiovascular magnetic resonance – 2020 update: Society for Cardiovascular Magnetic Resonance (SCMR): Board of Trustees Task Force on Standardized Post-Processing. *J Cardiovasc Magn Reson* 22(1):19. doi:10.1186/s12968-020-00610-6
  11. Botker HE, Kaltoft AK, Pedersen SF, Kim WY (2012) Measuring myocardial salvage. *Cardiovascular research* 94(2):266–275. doi:10.1093/cvr/cvs081
  12. de Lemos JA, Antman EM, Giugliano RP, Morrow DA, McCabe CH, Cutler SS, Charlesworth A, Schroder R, Braunwald E (2000) Comparison of a 60- versus 90-minute determination of ST-segment resolution after thrombolytic therapy for acute myocardial infarction. In TIME-II Investigators. Intravenous nPA for Treatment of Infarcting Myocardium Early-II. *Am J Cardiol* 86(11):1235–1237, A1235. doi:10.1016/s0002-9149(00)01207-8
  13. Schroder R, Wegscheider K, Schroder K, Dissmann R, Meyer-Sabellek W (1995) Extent of early ST segment elevation resolution: a strong predictor of outcome in patients with acute myocardial infarction and a sensitive measure to compare thrombolytic regimens. A substudy of the International Joint Efficacy Comparison of Thrombolytics (INJECT) trial. *J Am Coll Cardiol* 26(7):1657–1664. doi:10.1016/0735-1097(95)00372-x
  14. de Lemos JA, Braunwald E (2001) ST segment resolution as a tool for assessing the efficacy of reperfusion therapy. *J Am Coll Cardiol* 38(5):1283–1294. doi:10.1016/s0735-1097(01)01550-9
  15. Angeja BG, Gunda M, Murphy SA, Sobel BE, Rundle AC, Syed M, Asfour A, Borzak S, Gourlay SG, Barron HV, Gibbons RJ, Gibson CM (2002) TIMI myocardial perfusion grade and ST segment resolution: association with infarct size as assessed by single photon emission computed tomography imaging. *Circulation* 105(3):282–285. doi:10.1161/hc0302.103588
  16. Bendary A, Tawfeek W, Mahros M, Salem M (2018) Impact of ST-segment resolution on clinical outcome in patients with ST-segment elevation myocardial infarction and preserved left ventricular function. *Ann Noninvasive Electrocardiol* 23(5):e12562. doi:10.1111/anec.12562
  17. Carrick D, Haig C, Carberry J, May VTY, McCartney P, Welsh P, Ahmed N, McEntegart M, Petrie MC, Eteiba H, Lindsay M, Hood S, Watkins S, Mahrous A, Rauhalammi SM, Mordi I, Ford I, Radjenovic A,

- Sattar N, Oldroyd KG, Berry C (2016) Microvascular resistance of the culprit coronary artery in acute ST-elevation myocardial infarction. *JCI insight* 1(6):e85768. doi:10.1172/jci.insight.85768
18. Rakowski T, Dziewierz A, Siudak Z, Mielecki W, Brzozowska-Czarnek A, Legutko J, Rzeszutko L, Urbanik A, Dubiel JS, Dudek D (2009) ST-segment resolution assessed immediately after primary percutaneous coronary intervention correlates with infarct size and left ventricular function in cardiac magnetic resonance at 1-year follow-up. *J Electrocardiol* 42(2):152–156. doi:10.1016/j.jelectrocard.2008.12.002
  19. Dong J, Ndrepepa G, Schmitt C, Mehilli J, Schmieder S, Schwaiger M, Schomig A, Kastrati A (2002) Early resolution of ST-segment elevation correlates with myocardial salvage assessed by Tc-99m sestamibi scintigraphy in patients with acute myocardial infarction after mechanical or thrombolytic reperfusion therapy. *Circulation* 105(25):2946–2949. doi:10.1161/01.cir.0000022604.56986.ff
  20. Sezer M, Nisanci Y, Umman B, Yilmaz E, Olcay A, Erzen F, Ozsarhan O (2004) New support for clarifying the relation between ST segment resolution and microvascular function: degree of ST segment resolution correlates with the pressure derived collateral flow index. *Heart* 90(2):146–150. doi:10.1136/hrt.2002.009985
  21. Purcell IF, Newall N, Farrer M (1997) Change in ST segment elevation 60 minutes after thrombolytic initiation predicts clinical outcome as accurately as later electrocardiographic changes. *Heart* 78(5):465–471. doi:10.1136/hrt.78.5.465
  22. Roes SD, Kelle S, Kaandorp TA, Kokocinski T, Poldermans D, Lamb HJ, Boersma E, van der Wall EE, Fleck E, de Roos A, Nagel E, Bax JJ (2007) Comparison of myocardial infarct size assessed with contrast-enhanced magnetic resonance imaging and left ventricular function and volumes to predict mortality in patients with healed myocardial infarction. *The American journal of cardiology* 100(6):930–936. doi:10.1016/j.amjcard.2007.04.029
  23. Cheong BY, Muthupillai R, Wilson JM, Sung A, Huber S, Amin S, Elayda MA, Lee VV, Flamm SD (2009) Prognostic significance of delayed-enhancement magnetic resonance imaging: survival of 857 patients with and without left ventricular dysfunction. *Circulation* 120(21):2069–2076. doi:10.1161/CIRCULATIONAHA.109.852517
  24. Daniels A, van Bilsen M, Goldschmeding R, van der Vusse GJ, van Nieuwenhoven FA (2009) Connective tissue growth factor and cardiac fibrosis. *Acta Physiol (Oxf)* 195(3):321–338. doi:10.1111/j.1748-1716.2008.01936.x
  25. Choi JH, Chang SA, Choi JO, Song YB, Hahn JY, Choi SH, Lee SC, Lee SH, Oh JK, Choe Y, Gwon HC (2013) Frequency of myocardial infarction and its relationship to angiographic collateral flow in territories supplied by chronically occluded coronary arteries. *Circulation* 127(6):703–709. doi:10.1161/CIRCULATIONAHA.112.092353
  26. Greulich S, Mayr A, Gloekler S, Seitz A, Birkmeier S, Schaufele T, Bekerredjian R, Zuern CS, Seizer P, Geisler T, Muller KAL, Krumm P, Nikolaou K, Klug G, Reinstadler S, Pamminger M, Reindl M, Wahl A, Traupe T, Seiler C, Metzler B, Gawaz M, Windecker S, Mahrholdt H (2019) Time-Dependent Myocardial Necrosis in Patients With ST-Segment-Elevation Myocardial Infarction Without

- Angiographic Collateral Flow Visualized by Cardiac Magnetic Resonance Imaging: Results From the Multicenter STEMI-SCAR Project. *Journal of the American Heart Association* 8(12):e012429. doi:10.1161/JAHA.119.012429
27. Hoole SP, White PA, Read PA, Heck PM, West NE, O'Sullivan M, Dutka DP (2012) Coronary collaterals provide a constant scaffold effect on the left ventricle and limit ischemic left ventricular dysfunction in humans. *J Appl Physiol* (1985) 112 (8):1403–1409. doi:10.1152/jappphysiol.01304.2011
  28. Chery G, Kamp N, Kosinski AS, Schmidler GS, Lopes RD, Patel M, Al-Khatib SM (2020) Prognostic value of myocardial fibrosis on cardiac magnetic resonance imaging in patients with ischemic cardiomyopathy: A systematic review. *Am Heart J* 229:52–60. doi:10.1016/j.ahj.2020.08.004
  29. Cojan-Minzat BO, Zlibut A, Muresan ID, Cionca C, Horvat D, Kiss E, Revnic R, Florea M, Ciortea R, Agoston-Coldea L (2020) Left Ventricular Geometry and Replacement Fibrosis Detected by cMRI Are Associated with Major Adverse Cardiovascular Events in Nonischemic Dilated Cardiomyopathy. *J Clin Med* 9 (6). doi:10.3390/jcm9061997
  30. von Lueder TG, Wang BH, Kompa AR, Huang L, Webb R, Jordaan P, Atar D, Krum H (2015) Angiotensin receptor neprilysin inhibitor LCZ696 attenuates cardiac remodeling and dysfunction after myocardial infarction by reducing cardiac fibrosis and hypertrophy. *Circ Heart Fail* 8(1):71–78. doi:10.1161/CIRCHEARTFAILURE.114.001785
  31. Chen Y, Yang S, Yao W, Zhu H, Xu X, Meng G, Zhang W (2014) Prostacyclin analogue beraprost inhibits cardiac fibroblast proliferation depending on prostacyclin receptor activation through a TGF beta-Smad signal pathway. *PLoS One* 9(5):e98483. doi:10.1371/journal.pone.0098483
  32. Nguyen MN, Kiriazis H, Ruggiero D, Gao XM, Su Y, Jian A, Han LP, McMullen JR, Du XJ (2015) Spontaneous ventricular tachyarrhythmias in beta2-adrenoceptor transgenic mice in relation to cardiac interstitial fibrosis. *Am J Physiol Heart Circ Physiol* 309(5):H946–H957. doi:10.1152/ajpheart.00405.2015
  33. Webber M, Jackson SP, Moon JC, Captur G (2020) Myocardial Fibrosis in Heart Failure: Anti-Fibrotic Therapies and the Role of Cardiovascular Magnetic Resonance in Drug Trials. *Cardiol Ther* 9(2):363–376. doi:10.1007/s40119-020-00199-y
  34. Kim BG, Cho SW, Ha JH, Ahn HS, Lee HY, Kim GS, Byun YS, Rhee KJ, Nah JC, Kim BO (2019) Relationship between the ST-Segment Resolution and Microvascular Dysfunction in Patients Who Underwent Primary Percutaneous Coronary Intervention. *Cardiology research practice* 2019:8695065. doi:10.1155/2019/8695065
  35. Ndrepepa G, Alger P, Kufner S, Mehilli J, Schomig A, Kastrati A (2012) ST-segment resolution after primary percutaneous coronary intervention in patients with acute ST-segment elevation myocardial infarction. *Cardiology journal* 19(1):61–69. doi:10.5603/cj.2012.0009

## Tables

Table 1. Baseline patient characteristics of different degrees of ST-segment resolution.

s	All(n=42)	ST-segment resolution≥40.15%	ST-segment resolution<40.15%	P
		(n=26)	(n=16)	
nale (n)	30/12	20/6	10/6	0.483
rs)	62.0(54.5-70.0)	60.5(52.8-70.3)	63.5(59.5-69.5)	0.534
/m <sup>2</sup> )	24.2(23.0-25.6)	24.3(23.4-25.8)	24.2(21.9-24.7)	0.378
r history (No, %)	27(64.3%)	17(65.4%)	10(62.5%)	0.850
ry (No, %)	27(64.3%)	14(53.8%)	13(81.2%)	0.072
ory (No, %)	16(38.1%)	12(46.2%)	4(25.0%)	0.170
idemia (No, %)	21(50.0%)	13(50.0%)	8(8.0%)	1.000
balloon time (h)	5.79(3.67-7.60)	4.33(3.50-6.23)	7.04(5.81-8.40) *	0.001
ssification (No, %)				0.757
	29(74.4%)	19(79.2%)	10(66.67%)	
	10(25.6%)	5(20.8%)	5(33.33%)	
of DES (No, %)				0.142
	34(87.2%)	22(95.7%)	12(75.0%)	
	3(7.7%)	1(4.3%)	2(12.5%)	
	2(5.1%)	0(0.0%)	2(12.5%)	
artery, (No, %)				0.171
	18(42.9%)	8(30.8%)	10(62.5%)	
	11(26.2%)	8(30.8%)	3(18.8%)	
	13(31.0%)	10(38.5%)	3(18.8%)	
nt (10 <sup>9</sup> /L)	9.85(8.28-12.06)	10.09(8.28-12.06)	9.72(8.03-14.12)	0.875
nt (10 <sup>12</sup> /L)	4.44(3.91-4.82)	4.44(4.14-4.86)	4.45(3.71-4.72)	0.449
	139.0(125.0-151.0)	139.0(128.0-151.0)	135.5(113.3-150.8)	0.449
y/L)	198.0(163.0-238.0)	195.0(160.0-213.0)	212.5(175.0-282.3)	0.204
%)	6.0(5.7-7.2)	6.1(5.7-8.2)	5.9(5.7-6.4)	0.188
L)	42.0(35.0-56.0)	41.0(35.0-56.0)	46.0(36.0-53.5)	0.689
L)	126.0(52.0-209.0)	75.0(35.0-153.0)	185.5(101.1-237.3)	0.015
l/L)	73.0(60.0-81.0)	73.0(59.0-81.0)	71.5(60.3-83.3)	0.954
/ml)	57.9(7.9-245.0)	11.7(5.0-62.7)	227.5(80.0-381.2) *	<0.001
ponin-T (ng/ml)	11.6(6.2-19.3)	7.0(3.8-14.0)	18.6(12.2-24.9) *	<0.001
nm)	49.0±3.3	49.0±3.3	49.5±3.2	0.298
)	53.5(48.0-58.25)	57.0(53.5-61.0)	47.5(44.3-50.0) *	<0.001
ckness	70.0(55.0-80.0)	59.0(50.0-70.0)	81.0(80.0-85.0) *	<0.001
ural myocardial	17(40.5%)	2(7.7%)	15(93.8%)*	<0.001
, %)				
3	17.35(12.23-20.30)	12.90(11.13-19.40)	20.00(18.13-23.63) *	0.001
inhibitor (No, %)	17(43.6%)	11(47.8%)	6(37.5%)	0.522
No, %)	39(100.0%)	23(100.0%)	16(100.0%)	1.000
or/Clopidogrel	39(100.0%)	23(100.0%)	16(100.0%)	1.000
No, %)	39(100.0%)	23(100.0%)	16(100.0%)	1.000
r (No, %)	31(79.5%)	17(73.9%)	14(87.5%)	0.432
IB	24(61.5%)	14(60.9%)	10(62.5%)	0.918
(No, %)	38(97.4%)	22(95.7%)	16(100.0%)	1.000

s (No, %)	16(41.0%)	6(26.1%)	10(62.5%)	0.023
hours)	48.0(39.0-62.0)	47.0(38.0-58.0)	52.5(44.0-82.8)	0.123

Data are presented as mean  $\pm$  SD, median (interquartile ranges), or number (%). Abbreviations: STEMI, ST-segment elevation myocardial infarction; BMI, body mass index; HP, hypertension; DM, diabetes mellitus; DES, Drug eluting stents; LAD, left anterior descending coronary artery; LCC, left circumflex coronary artery; RCA, right coronary artery; LVIDD, left ventricular diastolic diameter; LVEF, left ventricular ejection fraction. ACEI, angiotensin converting enzyme inhibitors; ARB, Angiotensin Receptor Blocker; CCU: Coronary heart disease Care Unit. \* $P<0.05$  comparing with ST-segment resolution $\geq 40\%$  group.

Table 2. Effects of various variables on transmural myocardial scar in logistic regression analysis.

Characteristics	OR (95%CI)	<i>P</i>
Male, yes vs. no	0.500(0.234-1.068)	0.074
Age, per 1 years	0.994(0.984-1.004)	0.238
BMI, per 1 Kg/m <sup>2</sup>	0.984(0.959-1.009)	0.206
Smoking history, yes vs. no	0.588(0.269-1.285)	0.183
HP history, yes vs. no	1.077(0.506-2.291)	0.847
DM history, yes vs. no	0.333(0.108-1.034)	0.057
Hyperlipidemia, yes vs. no	0.615(0.255-1.485)	0.280
Pain to balloon time, per 1 min	1.018(0.928-1.118)	0.702
Killip classification, II vs. I	1.500(0.423-5.315)	0.530
Number of DES, two& three vs. one	4.000(0.447-35.788)	0.215
Culprit artery: RCD	1.00	
Culprit artery: LAD	0.571(0.167-1.952)	0.372
Culprit artery: LCC	0.444(0.137-1.443)	0.177
WBC count, per 1 $\times 10^9$ /L	0.971(0.917-1.028)	0.317
RBC count, per 1 $\times 10^{12}$ /L	0.915(0.792-1.058)	0.229
Hb, per 1 $\times g$ /L	0.997(0.993-1.002)	0.241
PLT, per 1 $\times 10^9$ /L	0.999(0.996-1.002)	0.567
HbA1c, per 1%	0.936(0.852-1.029)	0.172
ALT, per 1U/L	0.995(0.984-1.007)	0.442
AST, per 1U/L	1.001(0.998-1.004)	0.561
Cr, per 1 $\mu$ mol/L	0.995(0.987-1.004)	0.283
BNP, per 1pg/ml	1.003(0.999-1.008)	0.120
Peak troponin-T, per 1 ng/ml	1.014(0.975-1.054)	0.500
LVIDd, per 1mm	0.993(0.980-1.005)	0.255
LVEF, per 1%	0.520(0.341-0.792)	0.002
ST-segment <40.15%, yes vs. no	15.0(1.981-113.556)	0.009
Scar thickness	1.000(0.991-1.009)	0.975
Scar size	0.993(0.960-1.027)	0.685
IIa/IIIb inhibitor, yes vs. no	0.545(0.202-1.475)	0.232
$\beta$ -blocker, yes vs. no	0.824(0.406-1.671)	0.591
ACEI/ARB, yes vs. no	0.846(0.379-1.889)	0.683
Nitrates, yes vs. no	0.727(0.382-1.385)	0.332
Diuretics, yes vs. no	2.200(0.764-6.332)	0.144
CCU, per 1 hours	1.000(0.989-1.011)	0.987

Abbreviations: STEMI, ST-segment elevation myocardial infarction; BMI, body mass index; HP, hypertension; DM, diabetes mellitus; DES, Drug eluting stents; LAD, left anterior descending coronary artery; LCC, left circumflex coronary artery; RCA, right coronary artery; WBC, white blood cell; RBC, red

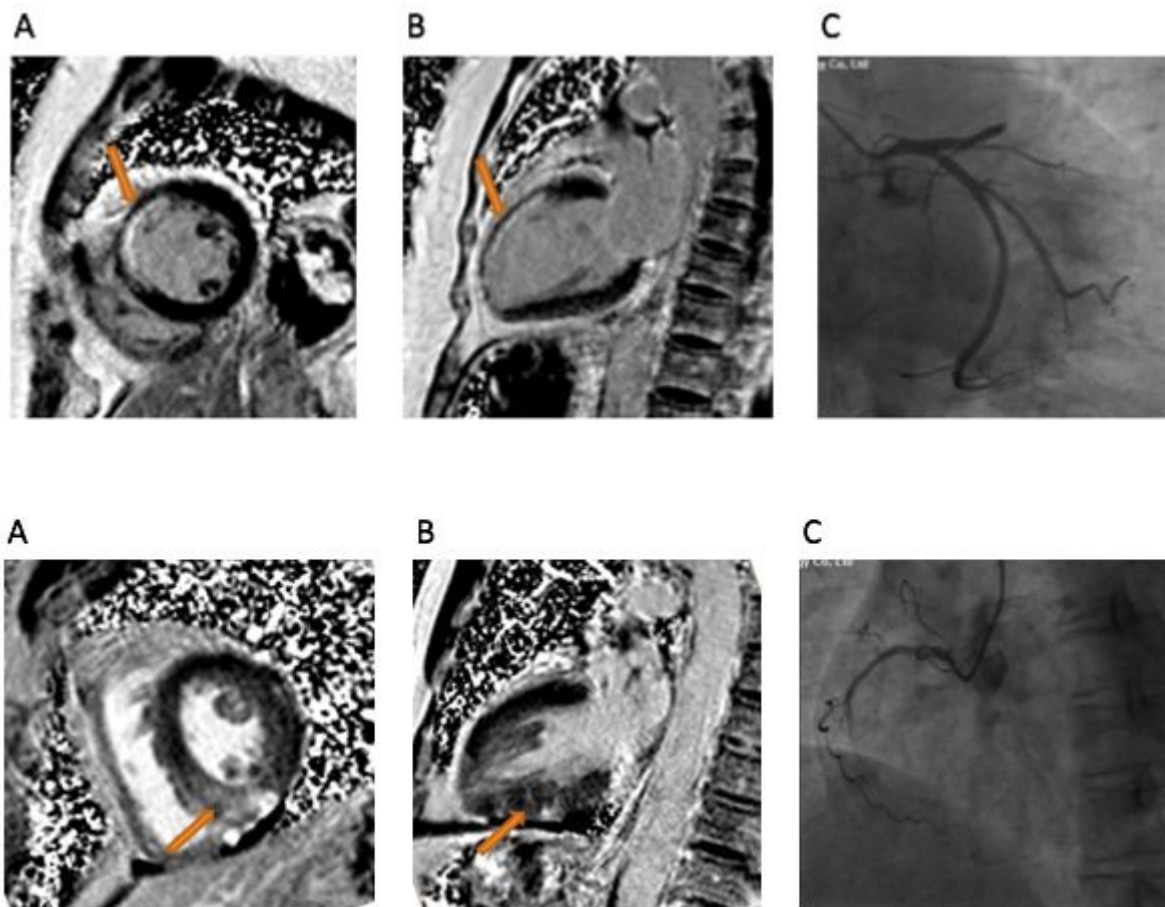
blood cell; Hb, Hemoglobin; PLT, platelet count; HbA1c, Hemoglobin A1c; ALT, alanine aminotransferase; AST, aspartate transaminase; Cr, creatinine; BNP, brain natriuretic peptide; LVIDD, left ventricular diastolic diameter; LVEF, left ventricular ejection fraction; ACEI, angiotensin converting enzyme inhibitors; ARB, Angiotensin Receptor Blocker; CCU: Coronary heart disease Care Unit.

Table3. Results of multivariate logistic proportional-hazards regression analyzing the effect of baseline variables on transmural myocardial scar.

Mode	OR (95%CI)	P
Not Adjusted ST-segment resolution<40.15%, yes vs. no	15.0(1.98-113.56)	0.009
Mode 1		
ST-segment resolution<40.15%, yes vs. no	211.40(9.64-4636.69)	0.001
Male, yes vs. no	0.19(0.02-2.31)	0.192
Age, per 1 years	0.94(0.87-1.01)	0.092
Pain to balloon time, per 1 hour	1.51(0.85-2.70)	0.160
Mode 2		
ST-segment resolution<40.15%, yes vs. no	280.14(12.42-6320.36)	<0.001
Smoking history, yes vs. no	0.10(0.01-0.82)	0.032
HP history (No, %)	0.49(0.09-2.61)	0.399
DM history (No, %)	0.15(0.01-2.09)	0.158
Mode 3		
ST-segment resolution<40.15%, yes vs. no	6394.05(8.51-4807147.53)	0.010
BNP, per 1pg/ml	1.00(0.99-1.02)	0.636
Peak Troponin-I, per 1 ng/ml	0.74(0.58-0.95)	0.020
Diuretics, yes vs. no	2.15(0.13-35.54)	0.592
Mode 4		
ST-segment resolution<40.15%, yes vs. no	187.94(11.33-3116.99)	<0.001
LVEF, per 1%	0.94(0.89-0.99)	0.016
AST, per 1U/L	1.00(0.99-1.02)	0.616
Mode 5		
ST-segment resolution<40.15%, yes vs. no	112.95(6.20-2059.35)	0.001
LVEF, per 1%	0.95(0.90-1.01)	0.079
Smoking history, yes vs. no	0.50(0.04-6.97)	0.605
Peak Troponin-I, per 1 ng/ml	1.04(0.88-1.23)	0.629

Abbreviations: STEMI, ST-segment elevation myocardial infarction; BNP, brain natriuretic peptide; LVEF, left ventricular ejection fraction; AST, aspartate transaminase.

## Figures



**Figure 1**

Illustration of scarred myocardium in STEMI patients Top row-1) Myocardial fibrosis in an STEMI patient lead by anterior descending coronary artery occlusion. STEMI: ST-segment elevation myocardial infarction. Arrows indicate the scarred myocardium. Anterior wall of left ventricle in a short axis view imaged with CMR-LGE (A). Anterior wall of left ventricle in a 2-chamber view imaged with CMR-LGE (B). Coronary angiogram(C) demonstrate anterior descending coronary artery occlusion. Bottom row-2) Myocardial fibrosis in an STEMI patient lead by right coronary artery occlusion. STEMI: ST-segment elevation myocardial infarction. Arrows indicate the scarred myocardium. Inferior wall of left ventricle in a 2-chamber view imaged with CMR-LGE (A). Posterior interventricular septum and inferior wall of left ventricle in a short axis view imaged with CMR-LGE (B). Coronary angiogram(C) demonstrate right coronary artery occlusion.

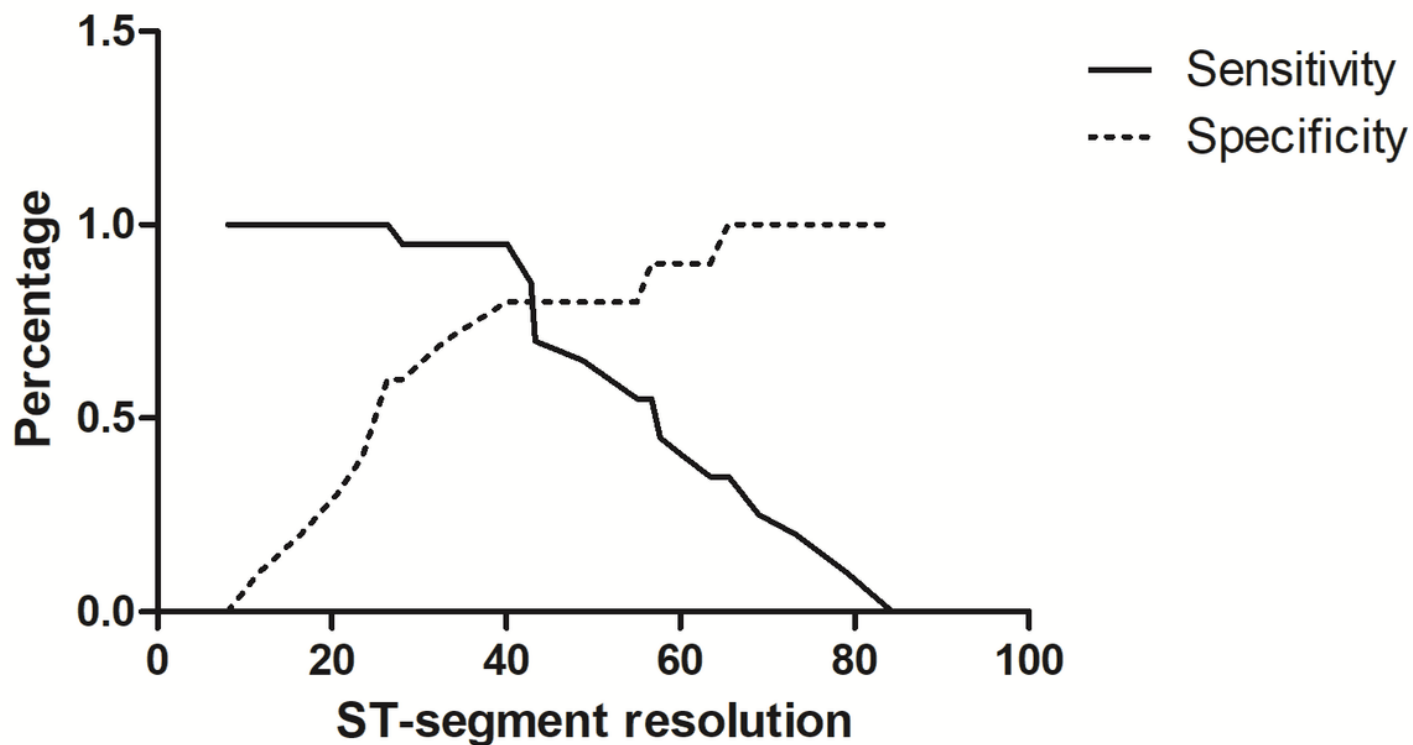


Figure 2

ST-segment resolution with transmural myocardial scar. Receiver operating characteristic (ROC) curve analysis demonstrated a sensitivity of 96% with a specificity of 88% to predict transmural myocardial scar following STEMI at a cut-off of ST-segment resolution of 40.15%. Area under curve (AUC)=0.92.

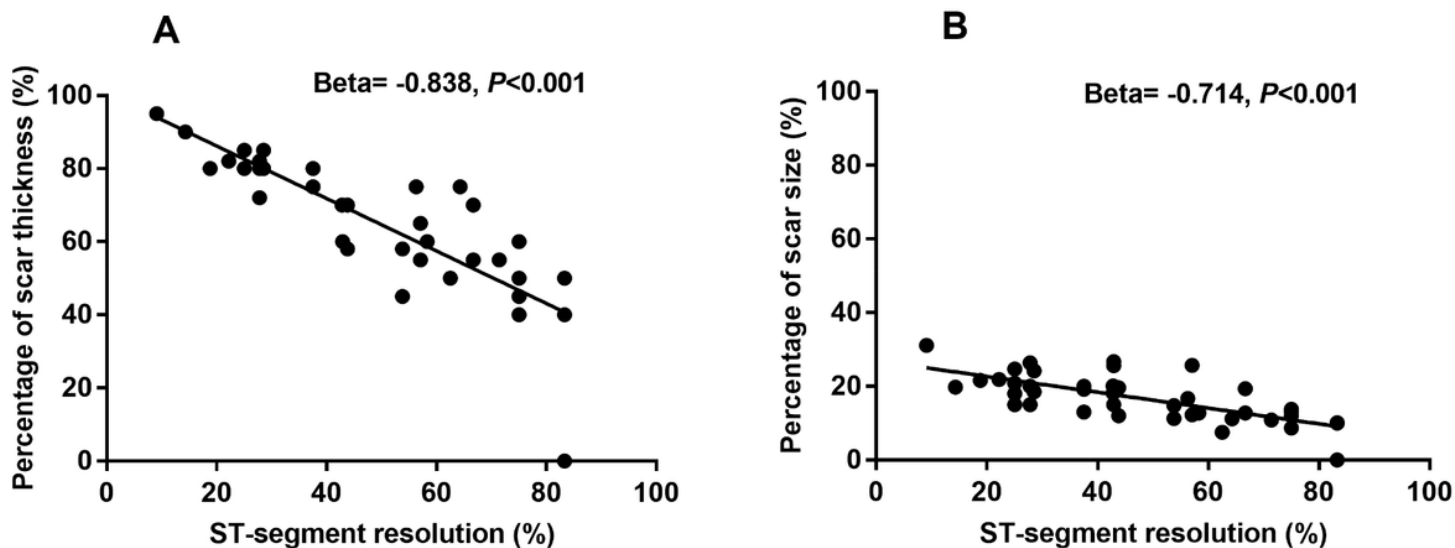


Figure 3



Correlation between ST-segment resolution and myocardial scar thickness or size. A: Linear regression analysis was performed to evaluate ST-segment resolution was negatively correlated with scar thickness.  $\beta=-0.838$ , 95% confidence interval:  $-1.182\sim-0.774$ ,  $P<0.001$ . B: Linear regression analysis was performed to evaluate ST-segment resolution was negatively correlated with scar size.  $\beta=-0.714$ , 95% confidence interval:  $-3.126\sim-1.635$ ,  $P<0.001$ .

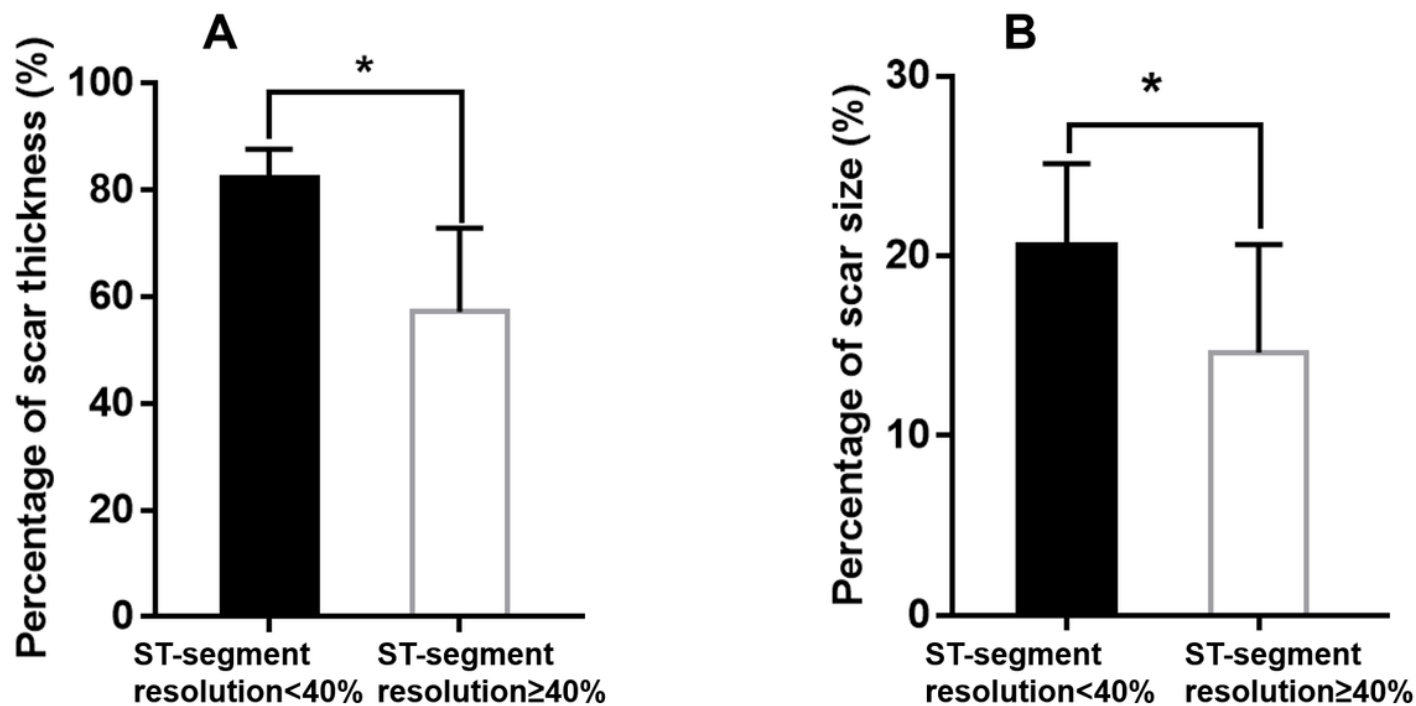


Figure 4

Myocardial scar thickness and size difference between two ST-segment resolution groups. A: Myocardial scar thickness was statistically significant in patients with ST-segment resolution <40.15% and in patients with ST-segment resolution ≥40.15% (t-Test). Data are reported as mean±SD. \*  $P<0.001$  B: Myocardial scar size was statistically significant in patients with ST-segment resolution <40.15% and in patients with ST-segment resolution ≥40.15% (t-Test). Data are reported as mean±SD. \*  $P<0.001$

## Supplementary Files

This is a list of supplementary files associated with this preprint. Click to download.

- [supplementalFigure2021.doc](#)