

Breast Microecology Improvement Using Probiotics Following Needle Aspiration in Patients With Lactational Breast Abscess: a Multi-center Randomized Double-blind Controlled Trial

Yi Zhang

hai dian qu fu you bao jian yuan: Haidian Maternal and Child Health Hospital

Yajun Gao (✉ gaoyajunzi@sina.com)

hai dian qu fu you bao jian yuan: Haidian Maternal and Child Health Hospital <https://orcid.org/0000-0002-5057-9220>

Jing Qin

hai dian qu fu you bao jian yuan: Haidian Maternal and Child Health Hospital

Xiaoting Li

Beijing Tumor Hospital: Beijing Cancer Hospital

Fei Jiang

Kaifeng Obstetrics and Gynecology Hospital

Yuanxuan Cai

Breast Department of Guangzhou Women and Children's Medical Center

Hui Feng

Breast Department of Taiyuan Maternity and Child Hospital

Xidong Gu

Breast Department of Zhejiang Provincial Hospital of Chinese Medicine

Mingze Gao

Breast Department of Changde First Hospital of Traditional Chinese Medicine

Lijuan Wang

Breast Department of Sanya City Womenfolk and Infant Health Care Hospital

Yiqi Lin

Breast Department of Jilin Women and Children Health Hospital

Yingyi Fan

Breast Department of Beijing University of Chinese Medicine Third Affiliated Hospital

Bucun Xu

Breast Department of Anyang Maternal and Child Health Care Hospital

Enli Wang

Breast Department of Shenzhen Maternity and Child Health Care Hospital

Qing Shao

Research Article

Keywords: lactational breast abscesses, *Lactobacillus fermentum*, breastfeeding

Posted Date: March 10th, 2021

DOI: <https://doi.org/10.21203/rs.3.rs-280421/v1>

License:  This work is licensed under a Creative Commons Attribution 4.0 International License.

[Read Full License](#)

Abstract

Background: Studies show that oral probiotics can improve the breast microecology and thus alleviate the inflammatory response; however, there is a lack of experimental data corresponding to cases with existing abscesses. We aimed to investigate the effect of *Lactobacillus fermentum* CECT5716 during needle aspiration in patients with lactational breast abscesses.

Methods: Patients (aged 20–41 years) with lactational single-cavity breast abscesses (diameter 3–6 cm) from 12 hospitals were randomly assigned to the experimental (n=51) and control groups (n=50). Outcome measures included the abscess cure rate on day-5 of treatment, delactation rate, relieving pain rate, and the number of needle aspirations until day-28.

Results: The experimental group's 5-day cure rate (43.1%, 22/51) was significantly higher ($p<0.05$). The breastfeeding continuation on day-5 did not differ significantly (experimental group: 88.2%, 45/51; control group: 96.0%, 48/50; $p=0.269$). In the experimental and control groups, 19.6% and 14.0% of patients experienced moderate to severe pain on day-5, respectively, with no statistically significant differences ($p=0.451$). The median number of needle aspirations up to day-28 was two in the experimental (1–3 times) and control (1–4 times) groups, with no statistically significant differences (Mann–Whitney U test, $p=0.322$). Four patients in each group developed diarrhea, with adverse reaction rates of 7.84% (4/51) and 8.0% (4/50), respectively. No adverse reactions were reported in the infants.

Conclusion: *L. fermentum* can shorten the healing time in patients with lactational breast abscesses.

Trial registration: This study was registered in the Chinese Clinical Trial Registry (<http://www.chictr.org.cn>), registration number: ChiCTR2000032682, registration date: May 6, 2020.

Background

The World Health Organization (WHO) maintains that breastfeeding benefits both the mother and the child [1, 2]. These benefits include aiding in the protection of the child against a variety of acute and chronic diseases. A review of studies conducted in developing countries has revealed that the risk of death in non-breastfed infants is 6 to 10 times higher than that in breastfed infants during the first few months of life [3, 4]. In China, poor breastfeeding and complementary feeding practices are widespread, thereby impairing the success of breastfeeding.

Lactational mastitis and its associated breastfeeding-related problems are key factors that represent the first medical cause for undesired weaning [5]. Furthermore, once the inflammation progresses and develops into an abscess, treating the condition would necessitate needle aspiration or even incision and drainage, which may reduce the breastfeeding rate. At present, the problem of drug resistance caused by antibiotic abuse is increasingly common; hence, it is imperative to explore new methods to treat an infection. Probiotics, which serve as a prospective treatment option, are safe and do not have a drug resistance problem. Studies show that oral probiotics can improve the breast microecology and thus

alleviate the inflammatory response [6]; however, there is a lack of experimental data corresponding to cases with existing abscesses.

To verify the effect of *Lactobacillus fermentum* CECT5716 in the treatment of patients with lactational breast abscesses, we aimed to conduct a randomized controlled double-blind trial across 12 hospitals in China between May 2020 and August 2020. The primary outcome measure was the abscess cure rate on day-5 of the treatment.

Methods

Study design and setting

A prospective, multicenter, randomized, double-blind, controlled clinical trial was conducted, which involved the participation of 12 centers and aimed verifying the effect of *L. fermentum* CECT5716 in the treatment of patients with lactational breast abscesses. The 12 selected hospitals were from 11 different municipalities and prefecture-level cities in China, and the distribution was relatively uniform. Random allocation was performed using a centralized randomization system (Zhejiang Taimei Technology Co., Ltd.). The probiotics and placebo were blinded as Product A or Product B; they showed no difference in appearance, and the product manager, on obtaining the random group number from the central random system, distributed Product A or Product B to the patients. For allocation of the participants, a list of random numbers, generated from an interactive web response system (eBalance 5.X), was used. Participants were randomly assigned to one of the two treatment groups with a 1:1 ratio. The block randomization procedures were implemented using random block sizes of 4.eBalance 5.X, which kept the allocation information of all participants, including their treatment groups, concealed until the clinical trial was completed and trial unblinding was required. Randomized patients received all products from the product manager during the study period, according to the intervention they were allocated; the new product was replaced with an empty one at each review. Study investigators, research coordinators, and the patients were blinded to the treatment allocation. The collected data were uploaded for review by the doctor to the Golden Data System (Xian Shu Ju Ru Jin tech co. ltd, Xian, China.).

Selection of participants

The following inclusion criteria were used in selecting participants: (a) patients aged between 20 and 45 years who were diagnosed with a lactational breast abscess; (b) patients who presented with a single-cavity unilateral breast abscess with a maximum diameter that was ≥ 3 cm and ≤ 6 cm as measured on the ultrasound, who did not exhibit epidermal ulceration, and who had undergone needle aspiration; and (c) patients who agreed to participate in the study and provided informed consent in writing.

The following exclusion criteria were applied: (a) patients who had previously presented with a breast abscess during the current pregnancy and lactation period; (b) patients in whom a medical examination revealed comorbid infections of other organs, such as puerperal infection; (c) patients with severe comorbid organ dysfunction (e.g., diabetes and hepatic, renal, and immune insufficiency); (d) patients

who did not maintain milk production in the affected breast through breastfeeding, breast pumping, or manual expression; and (e) patients whose body temperature was $> 37.5^{\circ}\text{C}$ within 24 h of testing.

The discontinuation criteria were as follows: (a) Patients who presented with severe diarrhea (watery stool > 5 times/24 h) during the treatment process. These patients were treated as discontinued cases and were promptly reported to the ethics committee; further, if the patient's body temperature was $\geq 37.5^{\circ}\text{C}$, their needle aspiration frequency was adjusted, they were guided in terms of lactation methods, or they were administered an active antibiotic treatment for 72 h. Even then, patients whose body temperature remained abnormal were withdrawn from the study. (b) Participants with poor compliance or who consumed the specified prohibited drugs mentioned in the study protocol during the experiment. (c) Participants who experienced other serious adverse events, such as cancer, HIV, etc.

Based on the criteria above, a total of 110 patients were enrolled in the clinical trial between May and August 2020, of whom 101 completed the trial (Fig. 1).

Before the start of the study, unified training was provided in all centers, and cases were registered in all centers until recruitment was completed. The research commenced in May 2020 and was completed in August 2020. After screening suitable cases, trained doctors spoke to the patients and obtained informed consent. In addition, each patient received 100 RMB for each review and up to 800 RMB for transportation.

Interventions

Both patient groups underwent routine needle aspiration of the breast abscess. Patients who met the inclusion criteria provided written informed consent prior to the needle aspiration. Complete routine blood tests and ultrasound examinations were performed before the operation. The most suitable puncture point (generally near the edge of the abscess cavity but far from the areola) and puncture path were then determined based on the location of the lesion; subsequently, the sites were routinely disinfected and draped and were subjected to infiltrative anesthesia with 1% lidocaine hydrochloride. Under the full guidance of an ultrasound, the needle was inserted into the fluid-filled hypoechoic area of the breast abscess, and the pus was aspirated and sent for bacterial culture. The puncture site was covered with sterile tape or gauze. In addition to needle aspiration treatment, the experimental group took one sachet of *L. fermentum* CECT5716 in warm water 30 min after the main meal once a day for 4 weeks continuously from the first needle aspiration treatment session. *L. fermentum* CECT5716 (Hereditum LC40) was manufactured by Biosearch Life (Granada, Spain). The participants continued to breastfeed during the testing period, and the number of needle aspirations was adjusted as needed. The control group took maltodextrin in the same manner.

During the 28 days of the study, the size of the abscess cavity was measured using the ultrasound on days 1, 5, 15, and 28, and the recovery, pain index, lactation, and maternal and infant safety were evaluated by the physician. The collected data were immediately uploaded by the doctor on the Golden Data System. After complete enrollment and follow-up, data were derived from the system. At the same

time, the central random system was unblinded and the data were handed over to the statistical experts for processing. Each case was verified to ensure its authenticity. The clinical research associate monitored the integrity and correctness of the data through the Golden Data System.

This study was approved by the Medical Ethics Committee of the Xiyuan Hospital of the China Academy of Chinese Medical Sciences (2020XLA025-1) and was registered in the Chinese Clinical Trial Registry (registration number: ChiCTR2000032682, registration date: May 6, 2020). Research was performed in accordance with relevant guidelines and regulations.

Outcomes/measurements

The criteria for a cured breast abscess were as follows: the complete disappearance of the abscess; no local redness, swelling, heat, or pain; and normal body temperature.

Pain rating: A visual analog scale was used to analyze and compare the degree of pain perceived by the two groups during the last milk removal session; pain scores of 0–3 points indicated mild pain, while those of 4–7 points and above indicated moderate to severe pain.

Estimation of the sample size

According to relevant data derived from literature reports and clinical experience statistics [7], it was preliminarily estimated that under the current routine treatment plan, the complete cure rate on day-5 would be 41.5%, while pilot testing indicated that when the treatment was combined with a breast microecological intervention, the cure rate would increase to 70%. Based on the calculations performed using PASS15.0 (HyLown Consulting LLC, Atlanta, GA, USA), the minimum sample size needed per group was found to be 44 patients, and if the proportion of patients that were lost to follow-up or were withdrawn was kept within 20%, then 55 cases would be needed in each group, thereby a total of 110 cases would be needed across both groups.

Analysis

Data processing and statistical analyses were performed using SPSS23.0 (IBM Corp., Armonk, NY, USA). All the tests were two-tailed and the significance level was $\alpha = 0.05$. Measurement data were either described using means/standard deviations or medians/interquartile ranges depending on their distribution; the between-group comparison was performed using a t-test or non-parametric test. Count data were described using frequencies and percentages, and the between-group comparison was performed using the chi-squared test or Fisher's exact test. Logistic regression analysis was used to estimate the odds ratio (OR) and 95% confidence interval (CI) of the primary outcome measure between the two groups and to analyze the influencing factors, with the inclusion of clinically important variables using the forced entry method. The analysis set was the "full analysis set," which is based on the intention-to-treat principle; all the randomized (eligible) participants were included in the analysis, and patients with missing data associated with the primary outcome measure or those without any follow-up data were excluded.

Results

Characteristics of the study subjects

Between May and August 2020, a total of 110 patients from 12 centers were randomized for participation in this clinical trial, among whom, 101 patients completed the trial and were included in the analysis, and nine cases dropped out (no primary outcome measure) and were excluded from the analysis. The experimental group included 51 patients, with a median age of 31 years (20–39 years), and the control group included 50 patients, with a median age of 30 years (20–41 years). The other basic information is summarized in Table 1.

Table 1
Basic information of the two groups

Variable	Value	Experimental group		Control group	
		N	%	N	%
Pregnancy status	Singleton	42	82.4	41	82.0
	Twins	9	17.6	9	18.0
Delivery status	Normal delivery	35	68.6	36	72.0
	Cesarean section	16	31.4	14	28.0
Breastfeeding status	Breastfeeding	32	62.7	30	60.0
	Mixed feeding	15	29.4	17	34.0
	Others	4	7.8	3	6.0
*Treatment history	Yes	22	43.1	21	42.0
	No	29	56.9	29	58.0
Maximum diameter of abscess cavity (cm)	$3 \leq n < 4$	16	31.4	19	38.0
	$4 \leq n < 5$	17	33.3	13	26.0
	$5 \leq n \leq 6$	18	35.3	18	36.0
*Treatment history included the use of antibiotics before and during the study period. Of the 22 cases in the experimental group, 18 were treated with cephalosporins and four with other antibiotics. Of the 21 cases in the control group, 14 were treated with cephalosporins and seven with other antibiotics.					

Primary outcome measure: comparison of the cut-off abscess cure rate on day-5 of treatment

Univariate analysis

As shown in Table 2, the cut-off abscess cure rate on day-5 of treatment in the experimental group was 43.1%, while that in the control group was 18.0%. The difference in the cure rate between the two groups was 25.1%, which was statistically significant (Pearson's chi-squared = 7.500, $p = 0.006$).

Table 2
Cut-off abscess cure rate on day-5 of treatment in the two groups

	Experimental group		Control group		Pearson's chi-squared	p
	N	%	N	%		
Cure/remission	22	43.1	9	18.0	7.500	0.006
Not cured	29	56.9	41	82.0		

Multivariate analysis

A logistic regression analysis was performed to analyze the factors influencing the cut-off abscess cure rate on day-5 of treatment, and the forced entry method was used to include variables, such as pregnancy status, breastfeeding status, and treatment history. The results are presented in Table 3. After adjustments for the variables, such as pregnancy status, breastfeeding status, and treatment history, the treatment group was still an influencing factor on the cut-off abscess cure rate on day-5 of treatment. The risk of not being cured in the experimental group was 0.282 compared with that in the control group, and the difference was statistically significant (OR = 0.282, 95% CI: 0.112–0.713, $p = 0.007$).

Table 3
Multivariate logistic regression analysis of the factors
influencing the cure rate on day-5

Factor	OR	95% CI	<i>p</i>
Group			0.007
Experimental group	0.282	0.112–0.713	
Control group	1	-	
Pregnancy status			0.711
Singleton	1	-	
Twins	0.805	0.255–2.537	
Breastfeeding status			0.202
Breastfeeding	1	-	
Mixed feeding	0.468	0.166–1.317	0.150
Others	0.240	0.026–2.236	0.210
Treatment history			0.852
Yes	1.091	0.438–2.719	
No	1		
Abbreviations: CI: confidence interval; OR: odds ratio.			

Between-group comparison of the breastfeeding rate during the treatment period

The proportion of patients who continued breastfeeding on the affected breast on day-5 of treatment was 88.2% and 96.0% in the experimental and control group, respectively. The difference in the cure rate between the two groups was 7.8%, which was not statistically significant (Fisher's exact probability $p = 0.269$). See Table 4 for details.

Table 4
Between-group comparison of the breastfeeding rate on day-5 of treatment

	Experimental group		Control group		<i>Fisher' p</i>
	N	%	N	%	
Continued breastfeeding	45	88.2	48	96.0	0.269
Stopped breastfeeding	6	11.8	2	4.0	

Pain rating on day-5 of treatment

As shown in Table 5, the proportion of patients with moderate to severe pain on day-5 of treatment was 19.6% in the experimental group and 14.0% in the control group. The difference in the cure rate between the two groups was 5.6%, which was not statistically significant (Pearson's chi-squared = 0.567, $p = 0.451$).

Table 5
Between-group comparison of the pain rating on day-5 of treatment

	Experimental group		Control group		Pearson's chi-squared	<i>P</i>
	N	%	N	%		
Mild	41	80.4	43	86.0	0.567	0.451
Moderate to severe	10	19.6	7	14.0		

Number of needle aspirations during the treatment period

The median number of needle aspirations during the follow-up period up to day-28 was two times (1–3 times) in the experimental group and two times (1–4 times) in the control group. The difference between them was not statistically significant (Mann–Whitney U test, $p = 0.322$). See Table 6 for details.

Table 6
Between-group comparison of the median number of needle aspirations during the follow-up up to day-28

	Experimental group		Control group	Mann-Whitney U test' <i>p</i>
	N		N	
1 time	15		18	0.322
2 times	23		24	
3 times	13		6	
4 times	0		2	

Adverse reactions

After the treatment, four patients in the experimental group developed diarrhea and adverse reaction rate was 7.84% (4/51); further, four patients in the control group developed diarrhea, and the adverse reaction rate was 8.0% (4/50). The affected patients in both the groups recovered spontaneously in the short-term without a medication-based intervention. Thus, we believe that this strain does not affect the normal gut

microbiota of the human body. During the trial, no adverse reactions were reported in the infants of the participants.

Discussion

In the present study, a total of 101 women were selected as participants from across the country, and the outcomes of the therapeutic effects of *L. fermentum* were similar to the results of the studies on mastitis from other countries. Our findings indicated that the 5-day cure rate in the experimental group was 43.1%, which was significantly higher than that of the control group (18.0%), thus implying the substantial effect of the strain in the abscess cure time reduction. The selection of the appropriate cure time was based on the integration of results of other studies [8], which indicated a mean disease duration of 8 days. Given the possibility of generating positive results, the cure rate on day-5 was selected as the primary outcome measure. In terms of the continued breastfeeding rate, there were no statistically significant differences between the two groups. This may have been because all the patients had single-cavity abscesses that were easier to treat clinically and had a relatively small mental and physical effect on the patients. However, the long-term effects of these abscesses on breastfeeding are still not known; thus, long-term observation and follow-up periods are still required. The pain rating depends on the subjective evaluations of the clinicians and participants, which involve a number of influencing factors, such as family environment, breastfeeding habits, etc. Therefore, these variables did not show significant differences. There was also no difference in the number of needle aspirations during the abscess treatment between the two groups, which may have been influenced by the different technical standards of the multiple centers, as well as by the different types of bacterial infections, previous use of antibiotics, and use of treatment methods such as Chinese medicine.

Ensuring an adequate nutritional supply during infancy and early childhood plays a vital role in assuring the normal growth and development of children. In a study conducted by the WHO in 2006, it was reported that among 9.5 million children, malnutrition directly or indirectly contributed to approximately one-third of the deaths in children < 5 years of age [1, 9]. In addition, malnutrition during the first 2 years of life can result in long-term growth and health impairment. Jones et al. [10] demonstrated that optimal breastfeeding could reduce the global mortality rate among children aged < 5 years by 13%. In 2002, the WHO and United Nations Children's Fund released the "Global strategy for infant and young child feeding" guidelines [11] that recommend exclusively breastfeeding a child until 6 months, followed by complementary feeding until 2 years of age and beyond. However, in reality, the global breastfeeding rate is a cause for concern. Arabi et al. surveyed 28 developing countries and found that only 25% of 0- to 5-month-old infants were exclusively breastfed [12]. In China, poor breastfeeding and complementary feeding practices are widespread. A prospective study conducted in 2014 revealed that 3–20% of breastfeeding women had acute mastitis during the feeding process [13]. Pevzner et al. [14] demonstrated that lactational mastitis could contribute to the premature cessation of breastfeeding. Therefore, the safe and effective treatment of lactational mastitis and shortening of the treatment time are currently crucial issues that need to be resolved.

Cullinane et al. [15] verified that the presence of *Staphylococcus aureus* in milk increased the risk of developing mastitis. *S. aureus* is the predominant pathogen in postpartum breast abscesses, accounting for 32–95% of all culture-confirmed cases, and Methicillin resistance was higher than 60% [16, 17]. Peripartum antibiotherapy has emerged as a strong risk factor for human mastitis due to the selection of antibiotic-resistant staphylococci in the mammary environment and the elimination of potential natural competitors [18]. It was previously believed that breast milk itself is sterile and that the contained bacteria originate from the infant's mouth [19], entering the mother's milk retrogradely because of the infant's sucking action during the breastfeeding process. Owing to the continuous advancement in research methods, more than 800 species of bacteria have been detected in breast milk with the application of metagenomics, which suggests that mastitis is not simply due to bacterial invasion and infection but is the result of changes in breast microecology, which could destroy the bacterial diversity [20]. Benno et al. [21] showed that anaerobic bacteria that cannot survive in aerobic environments could be detected in the breast milk, thus demonstrating that the bacteria in breast milk do not entirely originate from the external world. Recently, the presence of an entero-mammary pathway has been hypothesized [22], suggesting that the bacteria found in breast milk could have entered the mammary glands via an endogenous route from the mother's gastrointestinal tract or vagina, resulting in their secretion with the milk. The milk and bacteria together form a dynamically balanced microenvironment. The disruption of this balance can lead to localized or diffuse infections and can result in lactational mastitis [23]. These new discoveries presented us with the possibility of treating mastitis through the regulation of the microbiota.

Once lactational mastitis progresses into the development of a breast abscess, it becomes necessary to drain the pus to enhance the body's resistance to pathogens and viruses. However, the traditional incision and drainage approach gives rise to certain problems such as a large incision and painful dressing changes, which can cause substantial agony in patients and psychological trauma due to the resulting effects on their physical appearance. In recent years, ultrasound-guided needle aspiration of abscesses has gradually been widely accepted in clinical practice. Compared with traditional incision and drainage techniques, the advantages of the latter include a small incision, a high cure rate, fewer complications, and better preservation of breast aesthetics [8]. Ding et al. [7] found that the factors that are associated with the abscess itself, including the amount of pus collected during the first puncture, abscess location, and abscess size, are key to the recovery process following needle aspiration treatment. Further investigation is needed to determine other factors that affect the postoperative recovery of patients following the needle aspiration of a breast abscess.

Spanish scholars have isolated *L. fermentum* CECT5716 from healthy breast milk and found that this type of breast milk probiotic can effectively antagonize pathogenic bacteria, alleviate symptoms of swelling and pain during breastfeeding, and enhance both maternal and child immunity and gut health. To investigate this, Hurtado et al. [24] randomly divided 291 women who were in the puerperal period into an experimental group that received one probiotic capsule (*L. fermentum* CECT5716) a day and a control group that received one maltodextrin placebo capsule a day for a 16-week continuous intervention period. Their results showed that following the probiotic intervention, the incidence of mastitis was reduced by 51%. Arroyo et al. [25] conducted a 21-day study on 352 women with lactational mastitis who were

randomly assigned to two groups. The experimental group was administered 200 mg of freeze-dried *L. fermentum* CECT5716 daily, while the control group was administered antibiotics. The bacterial counts of *S. aureus* in the breast milk were measured and analyzed, revealing that the *S. aureus* count in the breast milk decreased by 42% in the experimental group following the probiotic intervention, which was significantly higher than the decrease in the control group ($p < 0.05$). The mechanism of action of *L. fermentum* could involve colonizing the digestive tract after entering the body via oral administration, reaching the breast tissue via the endogenous entero-mammary pathway, engaging in the competitive inhibition of pathogenic bacteria, and optimizing breast microecology, thereby resulting in the alleviation of the inflammatory response in the breast [6]. Furthermore, the recurrence and delactation rates in the antibiotic group were both higher than those in the probiotic group, which is associated with the destruction of the normal human microecology by common broad-spectrum antibiotics. This study has certain limitations, including the small sample size and multicenter treatment administration that may have affected the results due to the different treatment techniques in the different centers.

Conclusion

In summary, for patients with a single-cavity lactational breast abscess with a maximum diameter of 3–6 cm, the oral administration of *L. fermentum* CECT5716 during needle aspiration treatment can shorten the healing time and has no effect on safety during breastfeeding.

List Of Abbreviations

WHO, World Health Organization; OR, odds ratio; CI, confidence interval; *L. fermentum*, *Lactobacillus fermentum*; *S. aureus*, *Staphylococcus aureus*

Declarations

Ethics approval and consent to participate

This study was approved by the Medical Ethics Committee of the Xiyuan Hospital of the China Academy of Chinese Medical Sciences (2020XLA025-1). After screening suitable cases, trained doctors spoke to the patients and obtained informed consent.

Consent for publication

Not applicable.

Availability of data and materials

All data generated or analyzed during this study are included in this published article.

Competing interests

The authors declare that they have no competing interests.

Funding

The project was funded by Nanjing Yuheming Medical Nutrition Co., LTD. The funding body was not involved in the study design; the collection, analysis, and interpretation of data; or writing the manuscript.

Author contributions

GY is the corresponding author and conceived the study, designed the trial, and supervised the conduct of the trial and data collection. ZY and QJ undertook recruitment of participating centers and patients and managed the data, including the quality control. ZY chaired the data oversight committee, was responsible for design drawings and forms, and drafted the manuscript. LX provided statistical advice on the study design and analyzed the data. All the authors contributed substantially to the manuscript revision. ZY, GY, JF, CY, FH, GX, GM, WL, LY, FY, XB, WE, and SQ contributed to the acquisition, analysis, or interpretation of data. GY takes responsibility for the paper as a whole.

Acknowledgments

This work was supported by the Chinese Association Rehabilitation Medicine Postpartum Rehabilitation Professional Committee Certificate Program (registration number: CARMRPC-RFDP20-1); this study was generously funded and the blinded test material and placebo was provided by Nanjing Yuheming Medical Nutrition Co., LTD. We acknowledge Elife Technology Co., Ltd for providing the manuscript polishing, translation fees.

References

1. World Health Organization. Infant and young child feeding: model chapter for textbooks for medical students and allied health professionals. 2009.
<http://www.who.int/nutrition/publications/infantfeeding/9789241597494/en/>. Accessed 11 Feb 2021.
2. Fewtrell MS. The long-term benefits of having been breast-fed. *Curr Pediatr*. 2004;14:97-103.
3. WHO Collaborative Study Team on the Role of Breastfeeding on the Prevention of Infant Mortality. Effect of breastfeeding on infant and child mortality due to infectious diseases in less developed countries: a pooled analysis. *Lancet*. 2000;355:451-5.
4. Bahl R, Frost C, Kirkwood BR, Edmond K, Martines J, Bhandari N, et al. Infant feeding patterns and risks of death and hospitalization in the first half of infancy: multicenter cohort study. *Bull World Health Organ*. 2005;83:418-26.
5. Fernández L, Arroyo R, Espinosa I, Marín M, Jiménez E, Rodríguez JM. Probiotics for human lactational mastitis. *Benef Microbes*. 2014;5:169-83.

6. Rodríguez JM. The origin of human milk bacteria: is there a bacterial entero-mammary pathway during late pregnancy and lactation? *Adv Nutr.* 2014;5:779-84.
7. Ding ST, He XP, Ma XJ, Gao HF, Gao YJ, Zhang HW. Clinical analysis of ultrasound-guided abscess puncture for breast abscess during lactation. *Chinese J Breast Dis.* 2017;11:157-161.
8. Irusen H, Rohwer AC, Steyn DW, Young T. Treatments for breast abscesses in breastfeeding women. *Cochrane Database Syst Rev.* 2015;8:CD010490.
9. Black RE, Allen LH, Bhutta ZA, Caulfield LE, de Onis M, Ezzati M, et al. Maternal and child undernutrition: global and regional exposures and health consequences. *Lancet.* 2008;371:243-60.
10. Jones G, Steketee RW, Black RE, Bhutta ZA, Morris SS; Bellagio Child Survival Study Group. How many child deaths can we prevent this year? *Lancet.* 2003;362:65-71.
11. WHO. Global strategy for infant and young child feeding. Geneva, World Health Organization. 2003. <http://www.who.int/nutrition/publications/infantfeeding/9241562218/en/>. Accessed 11 Feb 2021.
12. Arabi M, Frongillo EA, Avula R, Mangasaryan N. Infant and young child feeding in developing countries. *Child Dev.* 2012;83:32-45.
13. Amir LH, Academy of Breastfeeding Medicine Protocol Committee. ABM clinical protocol #4: mastitis, revised March 2014. *Breastfeed Med.* 2014;9:239-43.
14. Pevzner M, Dahan A. Mastitis while breastfeeding: prevention, the importance of proper treatment, and potential complications. *J Clin Med.* 2020;9:2328.
15. Cullinane M, Amir LH, Donath SM, Garland SM, Tabrizi SN, Payne MS, et al. Determinants of mastitis in women in the CASTLE study: a cohort study. *BMC Fam Pract.* 2015;16:181.
16. Cenap D, Aydın İB. Abscesses in Lactating Women. *World J Surg.* 2003;27:130-3.
17. Boccaccio C, Verdaguer Babic V, Botto L, Cervetto MM, Cetani S, et al. Methicillin-resistant *Staphylococcus aureus* (MRSA) isolation in breast abscesses in a Public Maternity. *Medicina (B Aires).* 2014;74:210-5.
18. Jiménez E., Delgado S, Arroyo R, Fernández L, Rodríguez JM. Infectious mastitis during lactation: an underrated condition. *Acta Pediatrica Espanola.* 2009;67:125-32.
19. West PA, Hewitt JH, Murphy OM. Influence of methods of collection and storage on the bacteriology of human milk. *J Appl Bacteriol.* 1979;46:269-77.
20. Patel SH, Vaidya YH, Patel RJ, Pandit RJ, Joshi CG, Kunjadiya AP. Culture independent assessment of human milk microbial community in lactational mastitis. *Sci Rep.* 2017;7:7804.
21. Benno Y, Sawada K, Mitsuoka T. The intestinal microflora of infants: composition of fecal flora in breast-fed and bottle-fed infants. *Microbiol Immunol.* 1984;28:975-86.
22. Jost T, Lacroix C, Braegger CP, Rochat F, Chassard C. Vertical mother-neonate transfer of maternal gut bacteria via breastfeeding. *Environ Microbiol.* 2014;16:2891-904.
23. Trop I, Dugas A, David J, El Khoury M, Boileau JF, Larouche N, et al. Breast abscesses: evidence-based algorithms for diagnosis, management, and follow-up. *Radiographics.* 2011;31:1683-99.

24. Hurtado JA, Maldonado-Lobón JA, Díaz-Ropero MP, Flores-Rojas K, Uberos J, Leante JL, et al. Oral administration to nursing women of *Lactobacillus fermentum* CECT5716 prevents lactational mastitis development: a randomized controlled trial. *Breastfeed Med.* 2017;12:202-9.

25. Arroyo R, Martín V, Maldonado A, Jiménez E, Fernández L, Rodríguez JM. Treatment of infectious mastitis during lactation: antibiotics versus oral administration of *Lactobacilli* isolated from breast milk. *Clin Infect Dis.* 2010;50:1551-8.

Figures

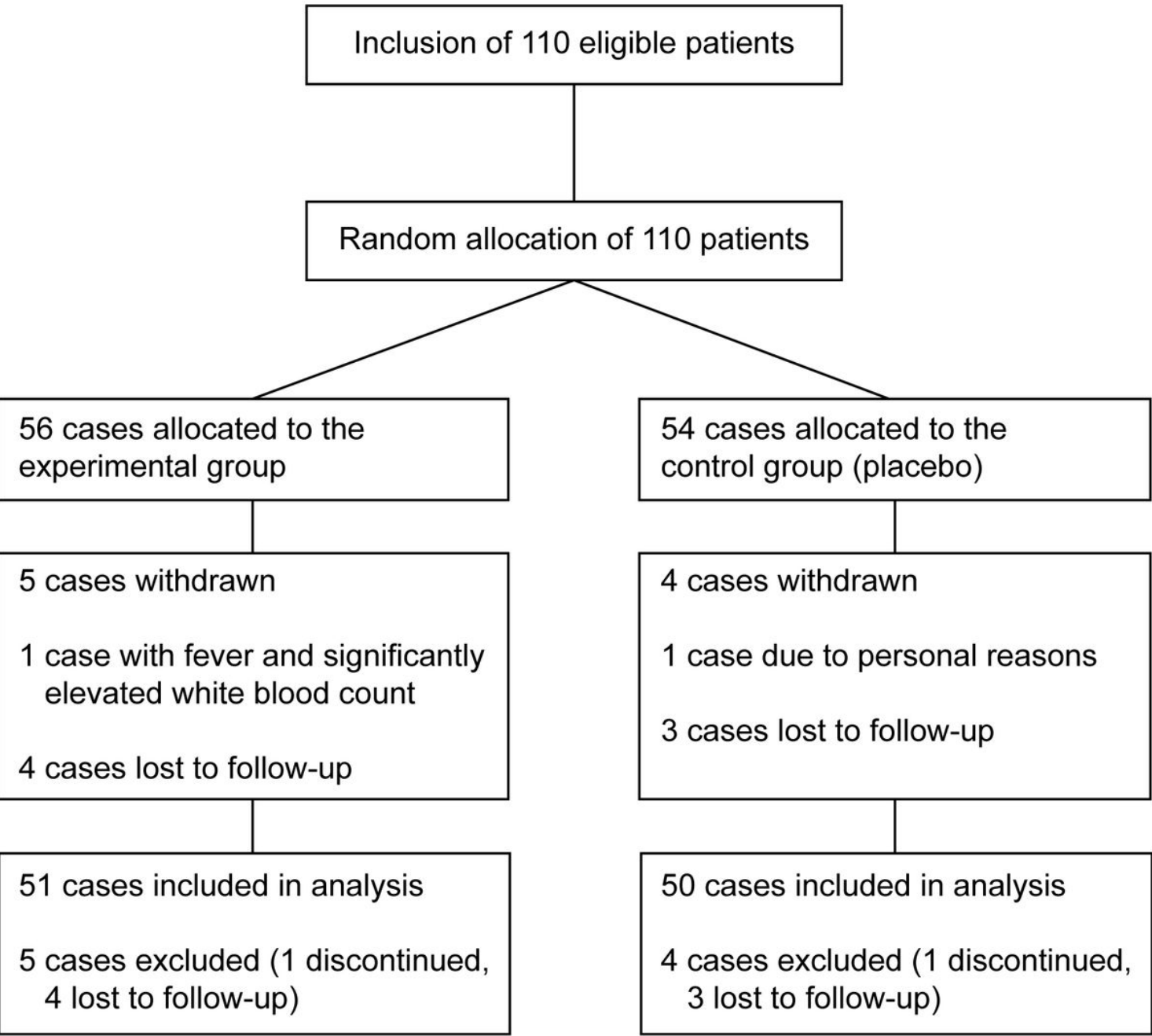


Figure 1

Patient selection flow chart

