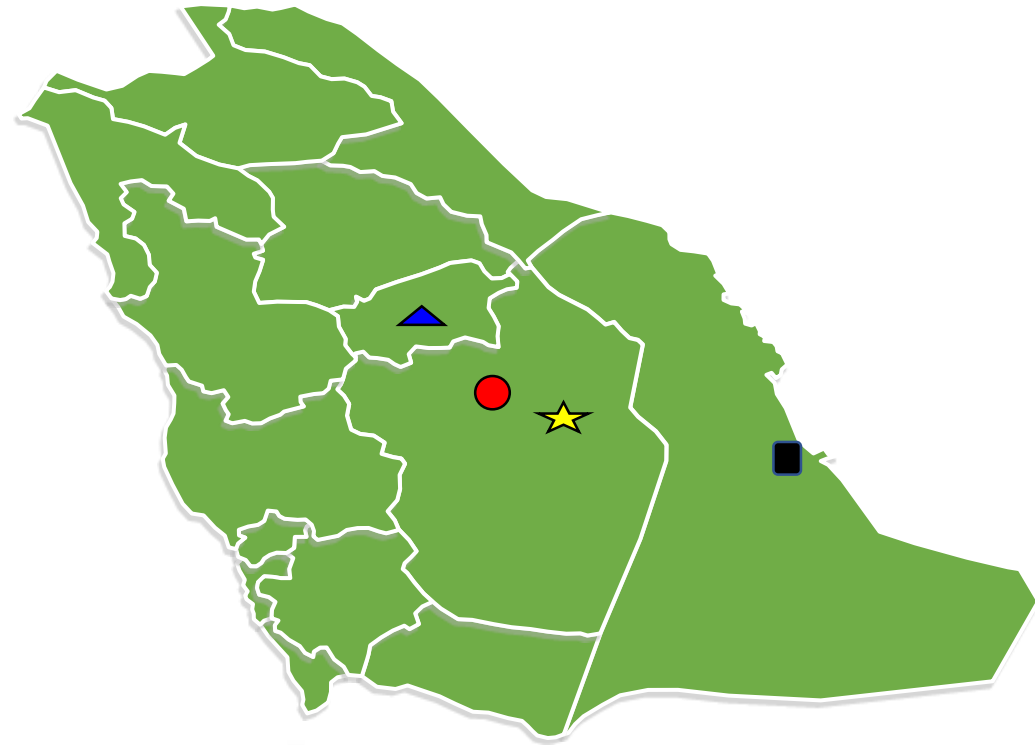


1- In this Study, of the 362 examined cattle, 245 (67.7%) were infested by ticks and the most representative tick species were *H. anaticum anaticum* (38.3%), *H. dromedarii* (21.4%) and *H. impeltatum* (18%).

2- Of the 362 cattle examined, nine (2.49%) were found to be infected with *Babesia*, 21 (5.80%) with *Anaplasma* and four (1.10%) were found co-infected with more than one pathogen,. *Anaplasma ovis* was the most prevalent pathogen (5.80%) followed by *Theileria annulata* (1.93%) and *Theileria ovis* (0.55%).



Al-Qassim



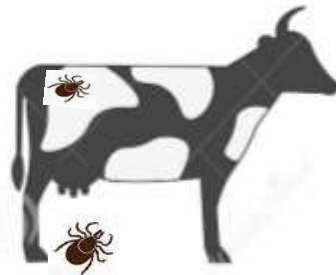
Al-Hasa



Riyadh city



Al-Karj



Map showing the location of the study areas in Saudi Arabia