

Histone deacetylase inhibitor, panobinostat exerts anti-proliferative effect with partial normalization from aberrant epigenetic states on granulosa cell tumor cell lines.

Yukiko Hazama¹, Takayuki Tsujioka², Arisu Sakamoto³, Yuka Miyaji³, Akira Kitanaka^{2,3}, Kaoru Tohyama^{2,3}, Koichiro Shimoya¹

1. Departments of Obstetrics and Gynecology, Kawasaki Medical School, Okayama701-0192, Japan

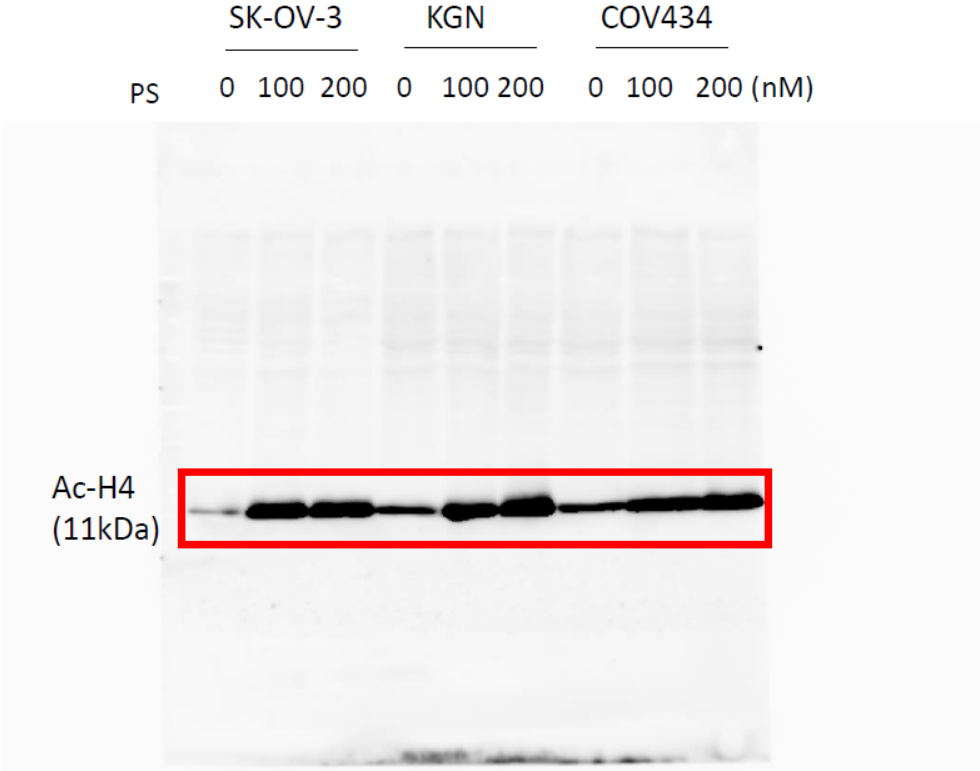
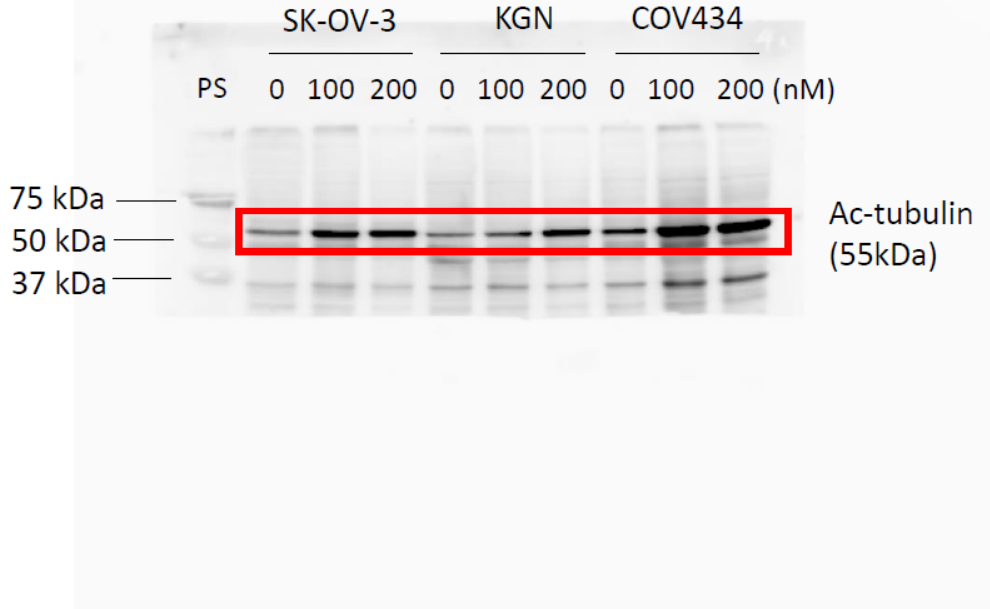
2. Department of Laboratory Medicine, Kawasaki Medical School, Okayama701-0192, Japan

3. Division of Medical Technology, Kawasaki University of Medical Welfare, Okayama701-0192, Japan

Correspondence to: Takayuki Tsujioka, Department of Laboratory Medicine, Kawasaki Medical School, 577 Matsushima, Kurashiki-City, Okayama 701-0192, Japan.

E-mail: tsujoka@med.kawasaki-m.ac.jp

Supplementary Figure and Legends



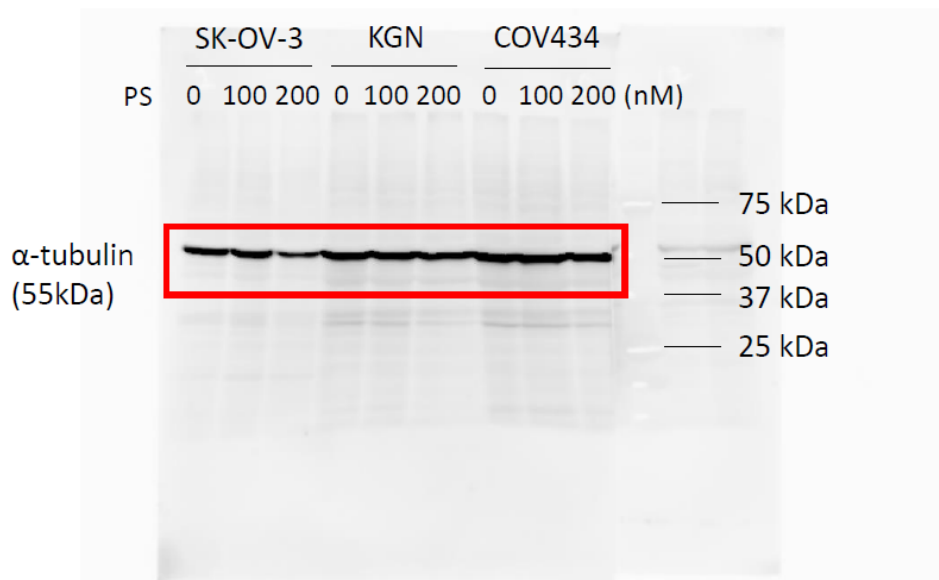
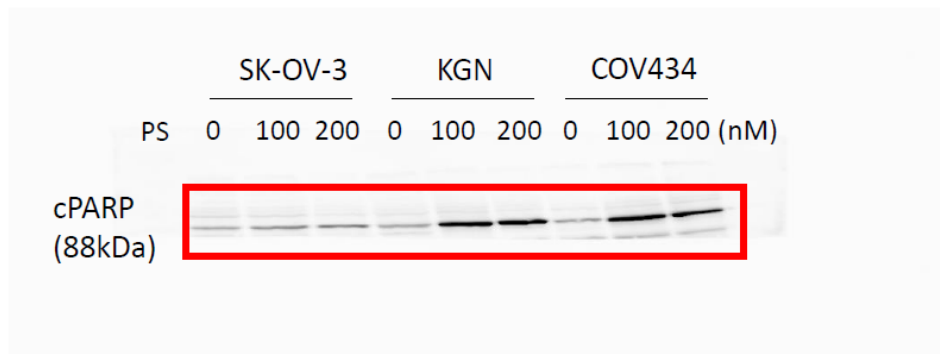


Figure S1. The original images of the immunoblotting analysis in Figure 1b

The same samples were loaded on four gels. The areas shown in Figure 1b were indicated by red frames of the original gels.

Ac-H4: acetyl-H4 (Lys12), Ac-tubulin: acetyl- α -tubulin (Lys40), cPARP: cleaved PARP

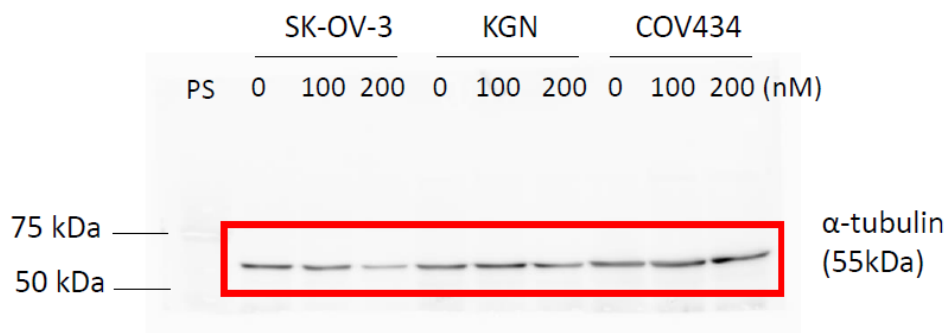
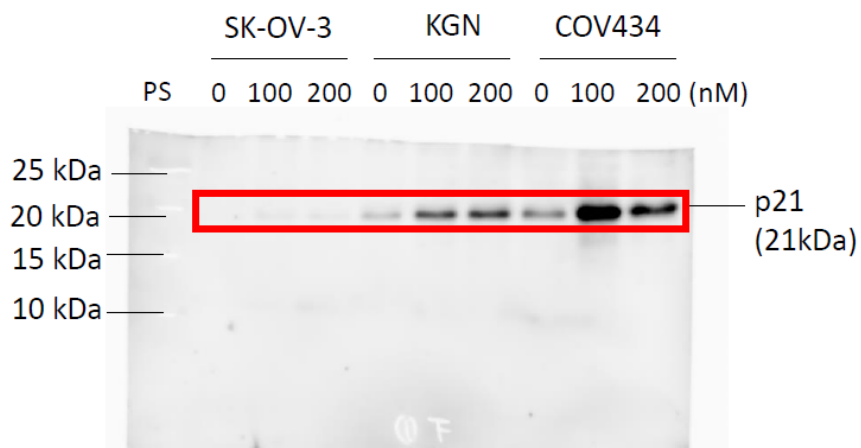
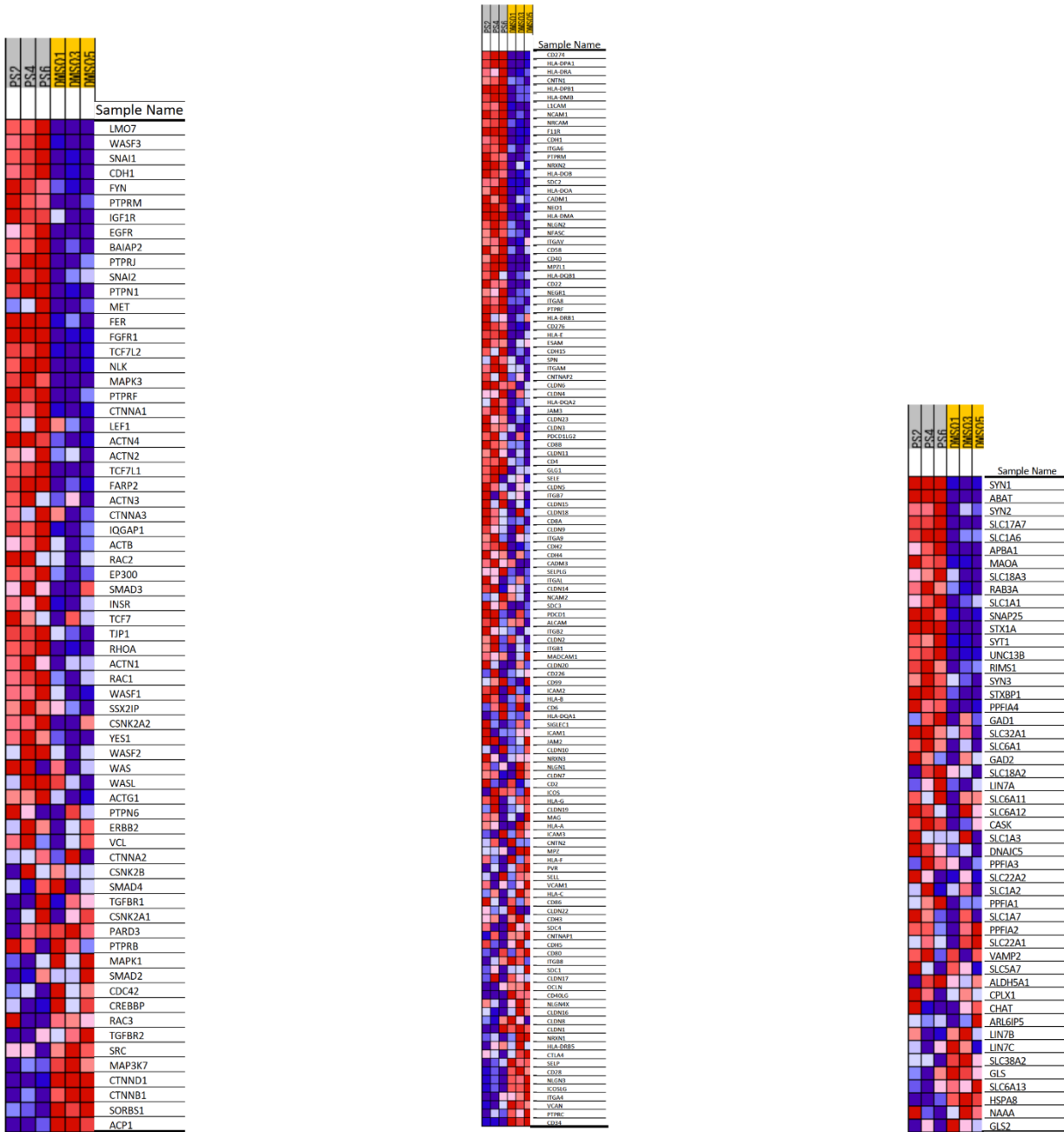


Figure S2. The original images of the immunoblotting analysis in Figure 1e

The same samples were loaded on two gels. The areas shown in Figure 1e were indicated by red frames of the original gels.



adherens junction

cell adhesion molecules

neurotransmitter release cycle

Figure S3. The heat map presentation of affected genes included in the gene sets

The heat map presentation of affected genes included in the gene sets is shown as each of the triplicate experiments (PS: PS-treated, DMSO: untreated). All genes included in each heat map were shown in Supplementary table.