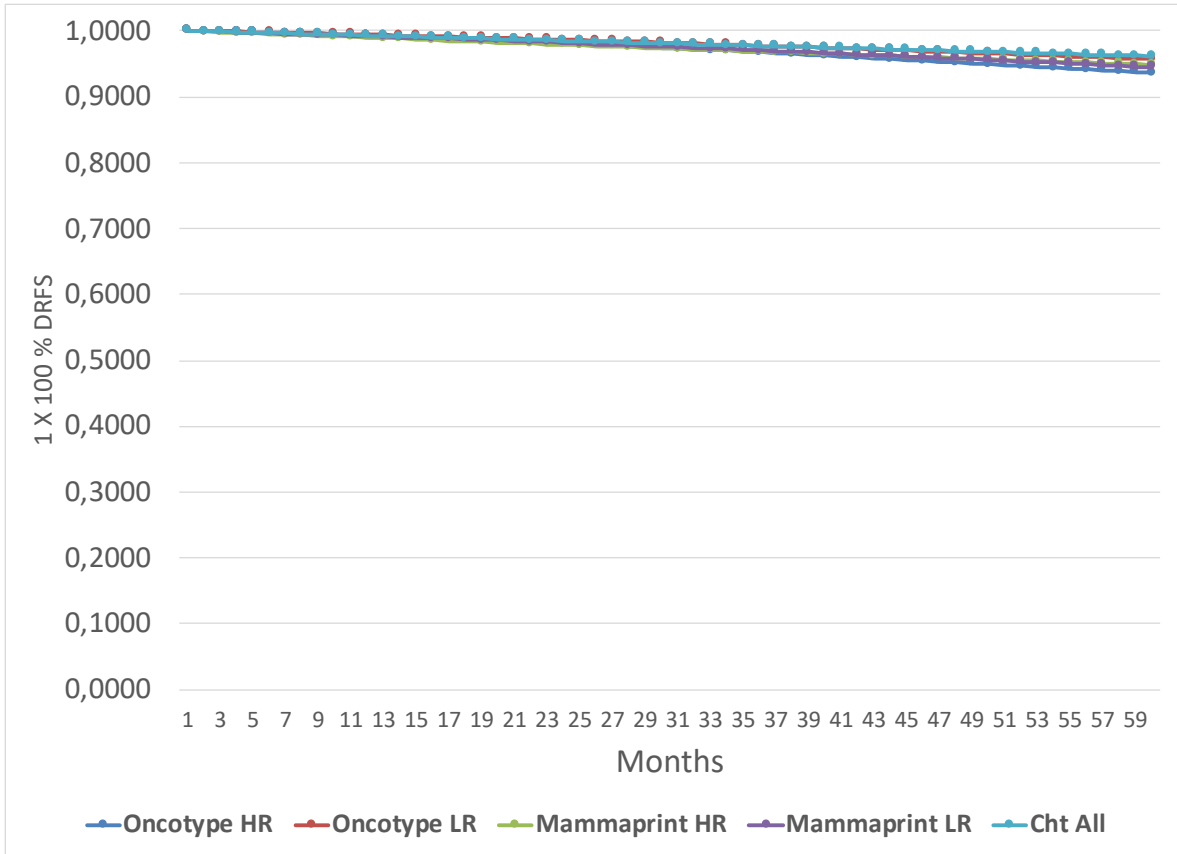


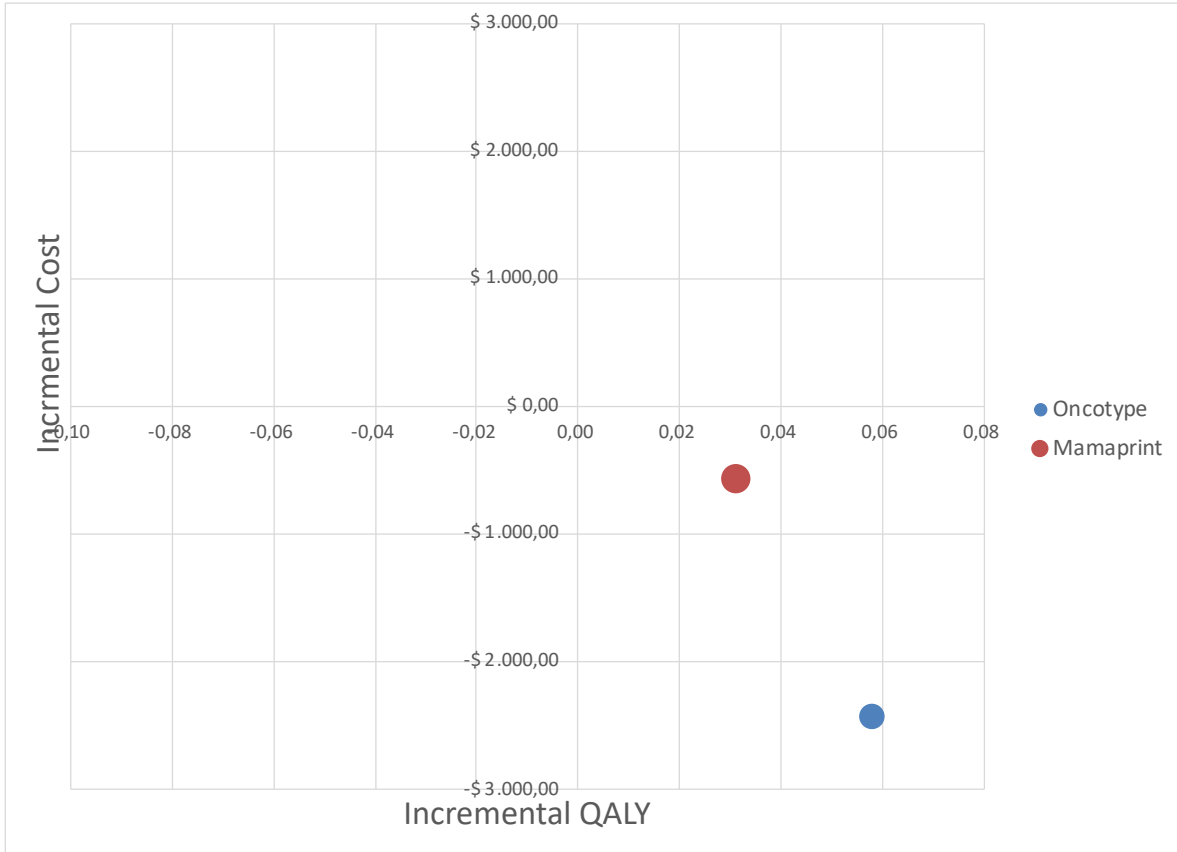
**Additional file 1**

**Supplementary Figure 1. Distant recurrence-free survival**



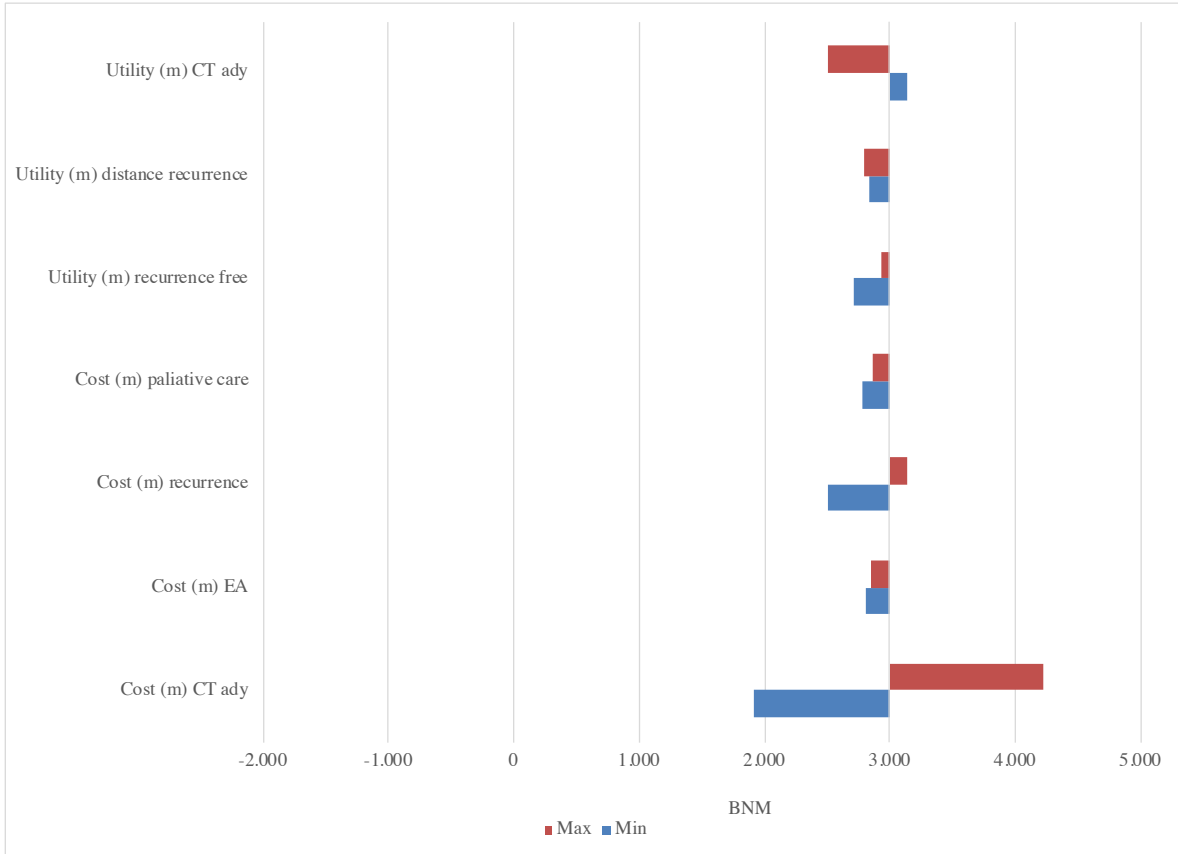
DRFS, distant recurrence-free survival; HR, high risk; LR, low risk; Cht, chemotherapy

**Supplementary Figure 2. Cost-effectiveness plot**



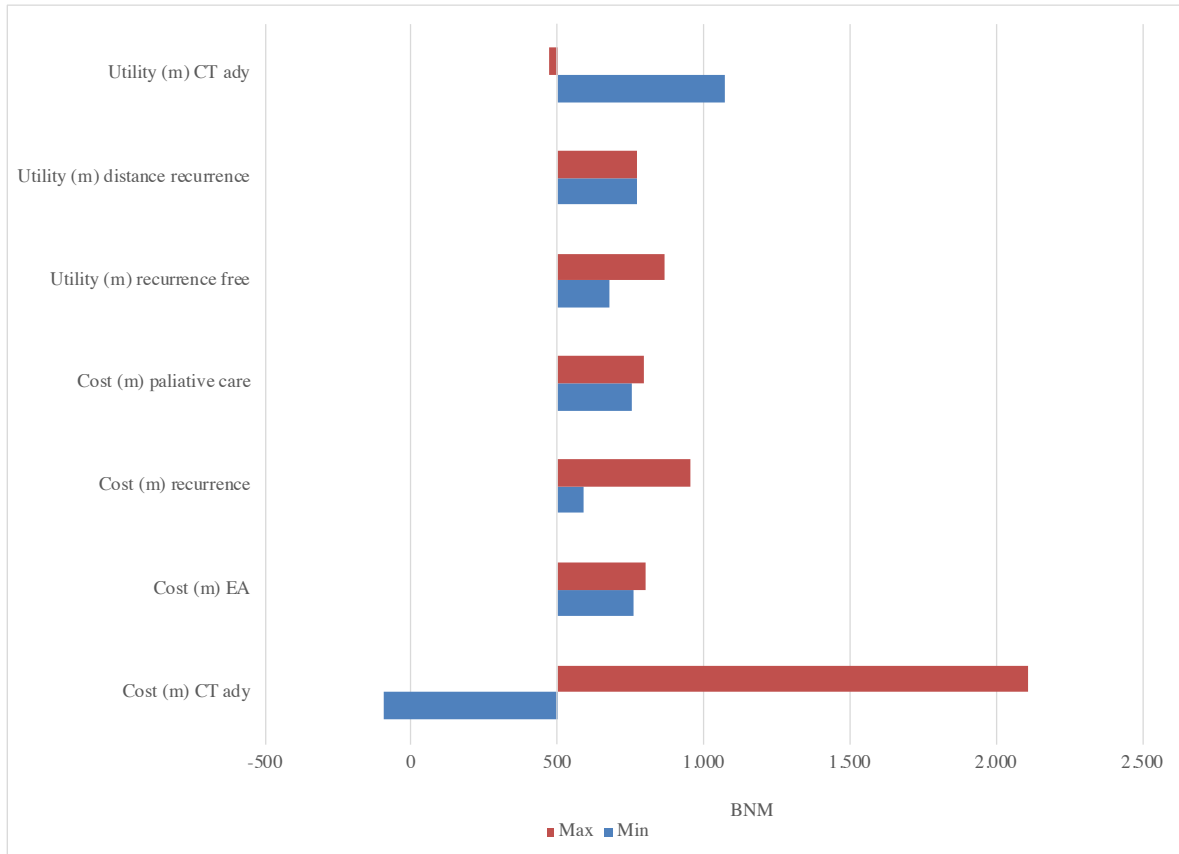
QALY, quality-adjusted life-year.

### Supplementary Figure 3. Deterministic sensitivity analysis of Oncotype



Cht, chemotherapy; m, month; AE, adverse event; NMB, net monetary benefit; Max, maximum; Min, minimum

**Supplementary Figure 4.** Deterministic sensitivity analysis of Mammaprint



Cht, chemotherapy; m, month; AE, adverse event; NMB, net monetary benefit; Max, maximum; Min, minimum.

**Supplementary Table 1. Patient characteristics**

<b>Characteristics</b>	<b>High clinical risk N = 2981</b>	<b>High clinical risk with chemotherapy N = 1643</b>
Age (median), n (%)	56.3 y	55.6 y
≤ 50 y	860 (28.9)	511 (31.1)
> 50 y	2,121 (71.2)	1,132 (68.9)
Menopausal status, n (%)		
Pre/Perimenopausal	976 (31.4)	547 (33.3)
Postmenopausal	2,048 (68.6)	1,096 (66.7)
Oncotype risk, n (%)		
High risk	1,255 (42.1)	1,013 (61.6)
≤ 50 y and score ≥ 16	645 (21.6)	447 (27.2)
> 50 y and score ≥ 26	610 (20.5)	566 (34.4)
Low risk	1,726 (57.9)	630 (38.4)

**Supplementary Table 2. Resources and costs**

	Base-case	Sensitivity range		Reference
		Minimum	Maximum	
Oncotype DX™	\$3,657	\$2,926	\$4,389	Provider
MammaPrint™	\$3,657	\$2,926	\$4,389	Provider
ChT regimen 1*	\$317	\$250	\$372	SISMED <sup>31</sup> , SOAT 2019 <sup>32</sup>
ChT regimen 2**	\$640	\$491	\$829	SISMED <sup>31</sup> , SOAT 2019 <sup>32</sup>
ChT average	\$479			SISMED <sup>31</sup> , SOAT 2019 <sup>32</sup>
Adverse events	\$1567	\$1213	\$2298	SISMED <sup>31</sup> , SOAT 2019 <sup>32</sup>
1 <sup>st</sup> year remission	\$112.62	\$79	\$155	SISMED <sup>31</sup> , SOAT 2019 <sup>32</sup>
≥ 2 <sup>nd</sup> year remission	\$54.81	\$32	\$85	SISMED <sup>31</sup> , SOAT 2019 <sup>32</sup>
DR regimen 1 <sup>†</sup>	\$46,541	\$43,737	\$50,838	SISMED <sup>31</sup> , SOAT 2019 <sup>32</sup>
DR regimen 2 <sup>††</sup>	\$47,973	\$46,114	\$48,735	SISMED <sup>31</sup> , SOAT 2019 <sup>32</sup>
DR average	\$4,724			
Palliative care	\$256.4	\$219	\$309	SISMED <sup>31</sup> , SOAT 2019 <sup>32</sup>
ChT, chemotherapy; DR, distant recurrence *AC-T: doxorubicin/cyclophosphamide x 4 cycles q/21days→Paclitaxel x 12 weeks **TC: docetaxel/cyclophosphamide x 4 cycles q/21 days †Palbociclib + Fulvestrant ††Ribociclib+ Fulvestrant				