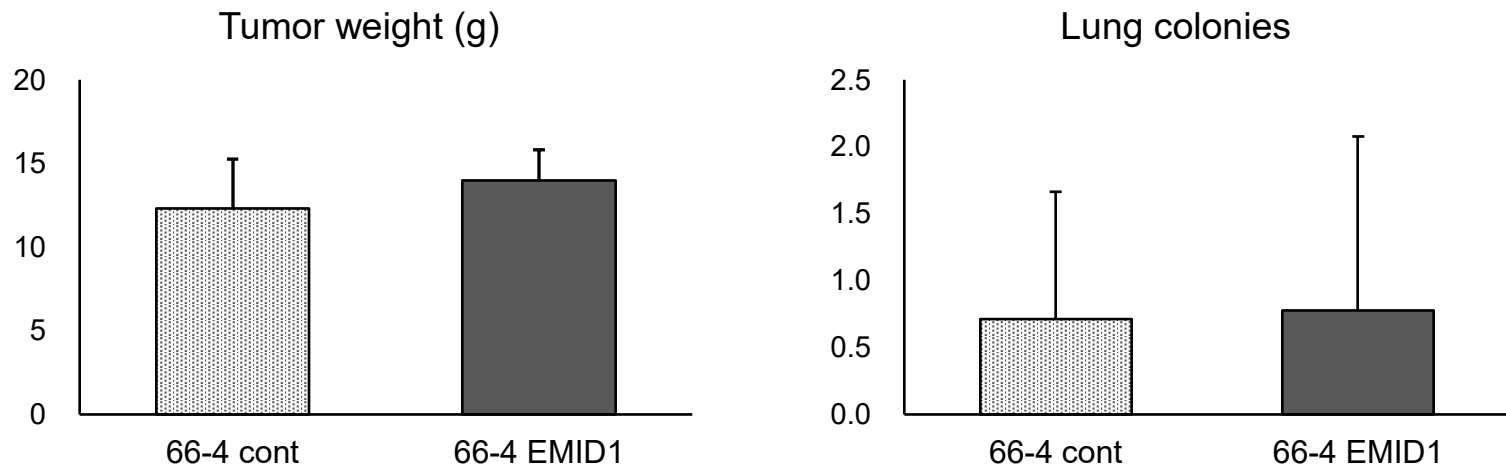


**EMID1: a multifunctional molecule identified in a murine model for the
invasion- independent metastasis pathway**

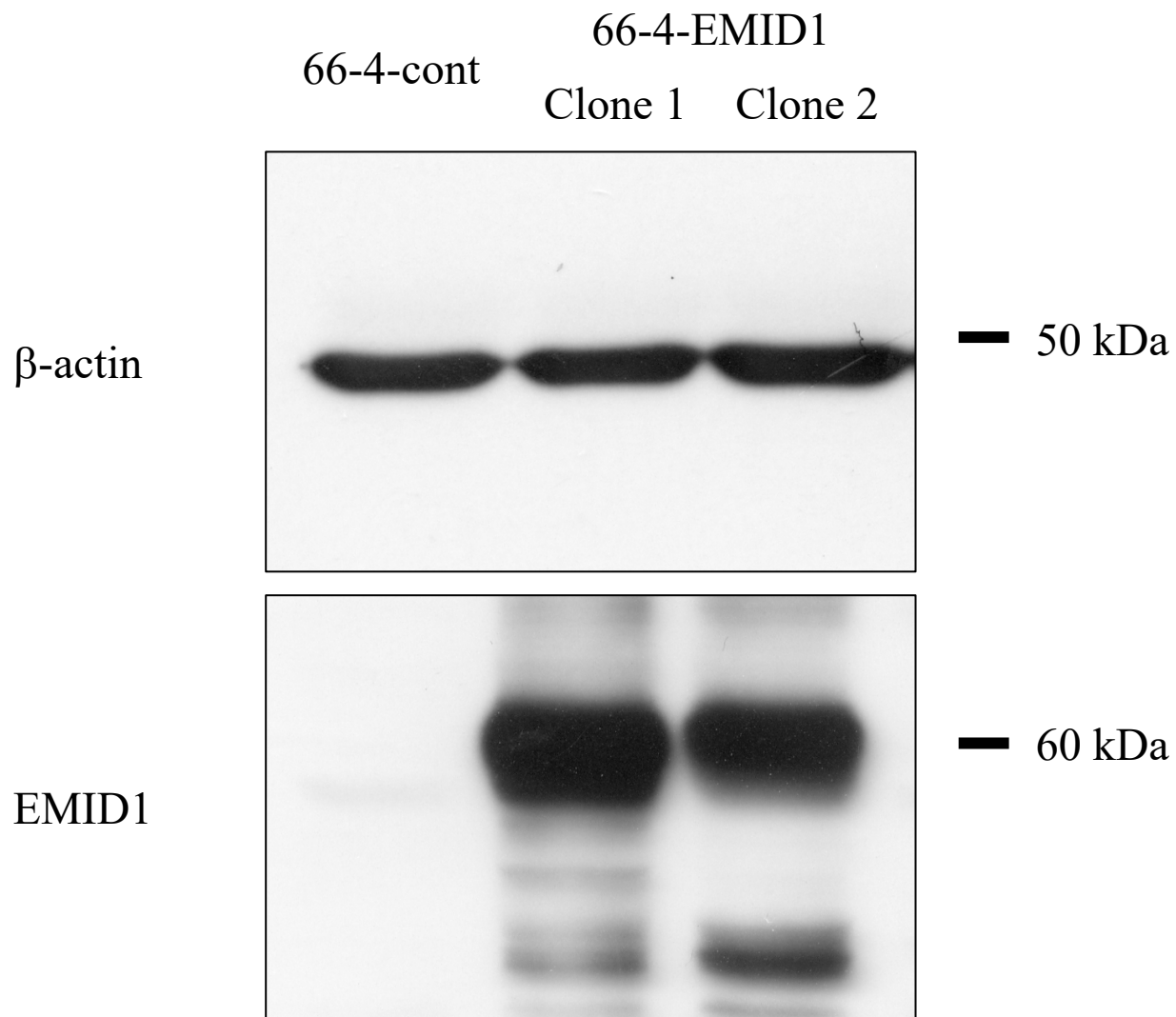
Takuya Kawata, Koji Muramatsu, Namiko Shishito, Naoki Ichikawa-
Tomikawa, Takuma Oishi, Yuko Kakuda, Yasuto Akiyama, Ken
Yamaguchi, Michiie Sakamoto, Takashi Sugino*

*Correspondence to: Takashi Sugino

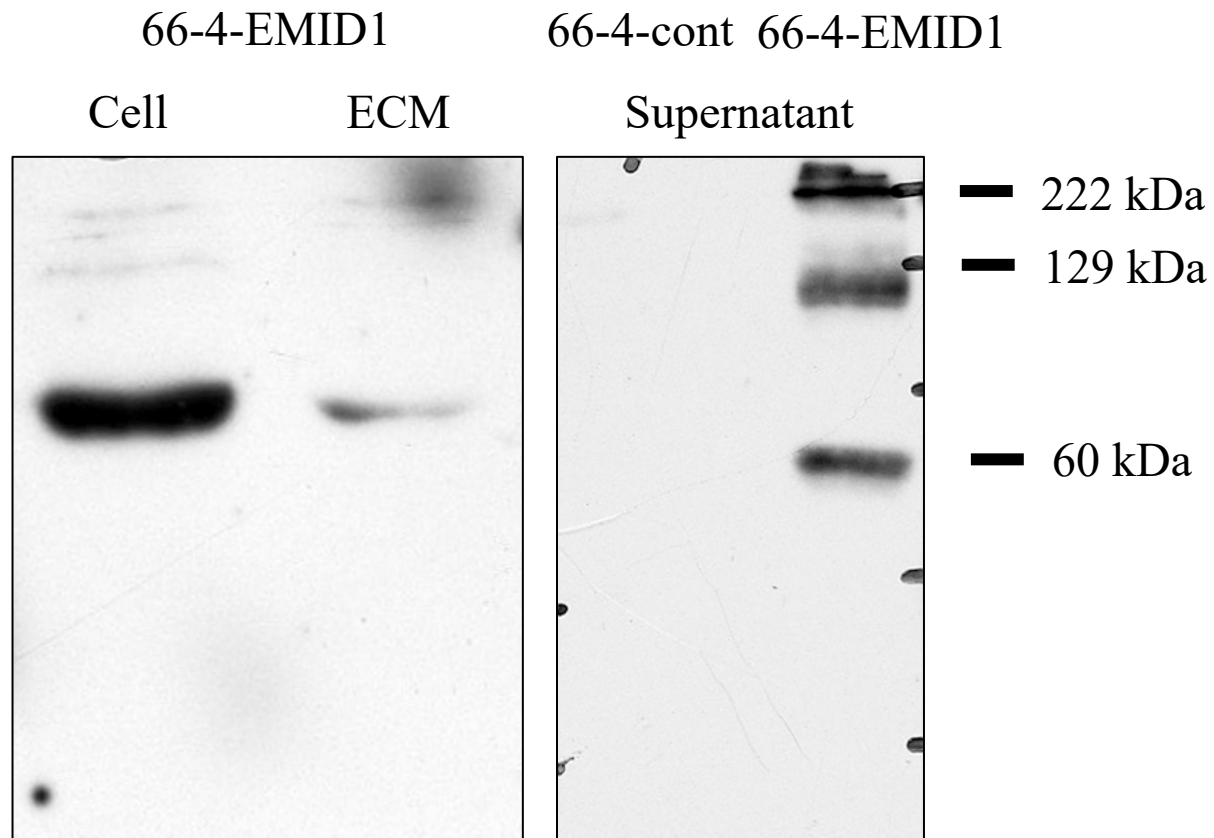


Supplementary Figure 1

Tumor weight and lung metastatic colonies of EMID1-overexpressing cells inoculate in fat pad of syngenic mice. Error bars, \pm standard deviation (SD)



Supplementary Figure 2
Extended immunoblotting images from Figure 1B.



Supplementary Figure 3
Extended immunoblotting images from Figure 3A.