

**Table S1. Primer sequences for PCR amplification of ESBL and pAmpC genes**

Genes	Primers	Sequence( 5' to 3')	Annealing (°C)	Reference
<b>TEM</b>	1	AAAATTCTTGAAGACG	60	[18]
	2	TTACCAATGCTTAATCA		
<b>CTX-M</b>	1	GGTTAAAAAATCACTGCGTC	57	[19]
	2	TTGGTGACGATTTTAGCCGC		
<b>SHV</b>	1	TAACTCCCTGTTAGCCA	56	[18]
	2	GATTTGCTGATTTTCGCCC		
<b>CMY</b>	1	GAT TCC TTG GAC TCT TCA G	50	[20]
	2	TAA AAC CAG GTT CCC AGA TAG C		
<b>FOX</b>	1	CAC CAC GAG AAT AAC CAT	50	[20]
	2	ATG TGG ACG CCT TGA ACT		
<b>MOX</b>	1	GCTGCTCAAGGAGCA CAG GAT	50	[21]
	2	CACATTGACATAGGT GTG GTGC		
<b>DHA</b>	1	AACTTTCACAGGTGTGCT GGGT	50	[21]
	2	CCGTACGCATACTGGCTT TGC		

**Table S2. Antimicrobial susceptibility for ESBL-positive *E. coli* blood isolates (n=17)**

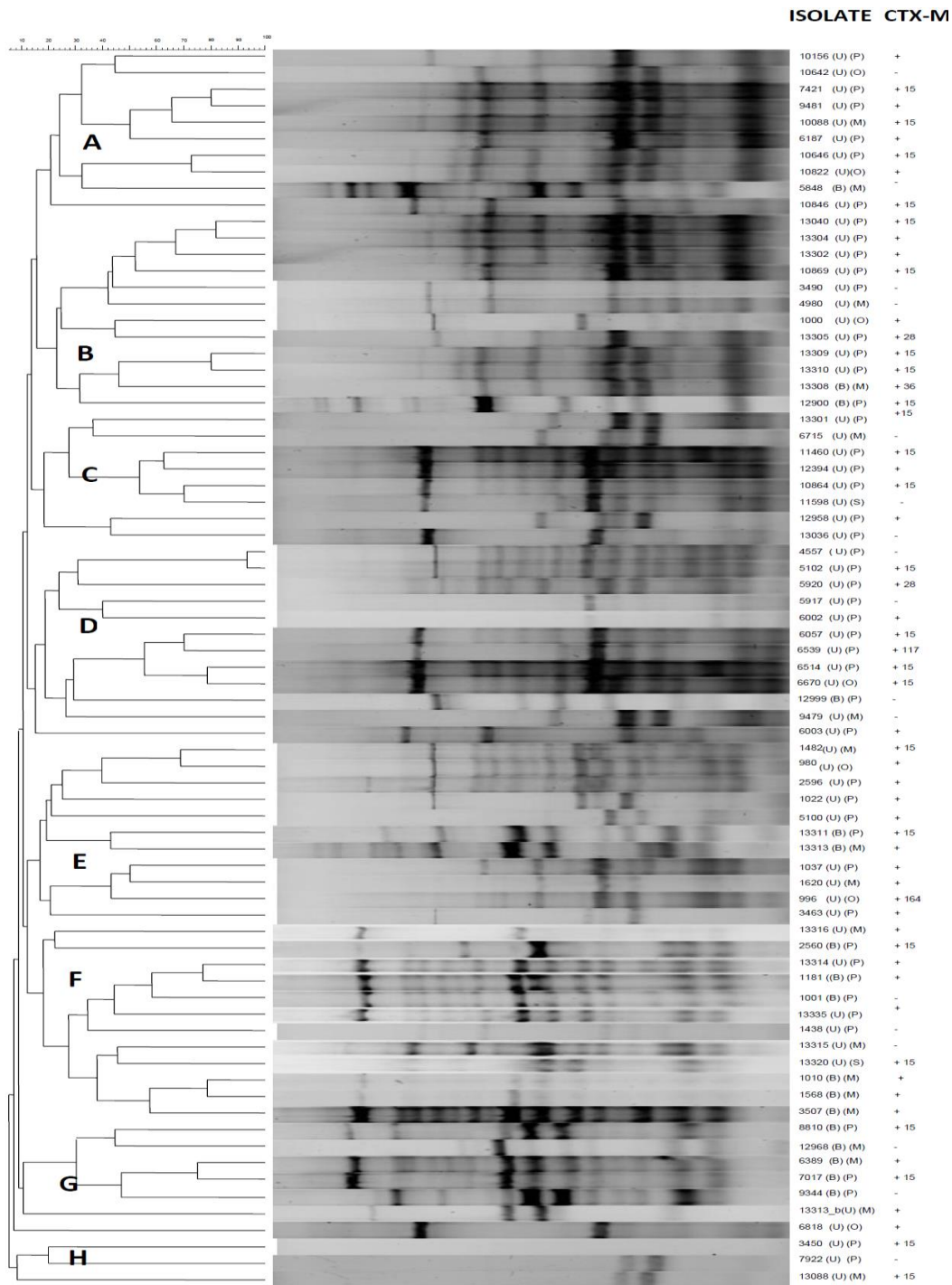
ID-NUMBER	WARD	CAZ	CTX	AMC	SXT	CIP	AMP	MER	GEN	FOX	PTZ	CRO
1001	Pediatric	R	R	R	R	S	R	S	S	S	S	R
1010	Medicine	R	R	S	R	S	R	S	S	S	S	R
1181	Pediatric	R	R	R	R	R	R	S	R	S	S	R
1568	Medicine	R	R	S	R	R	R	S	S	S	S	R
2560	Pediatric	R	R	I	R	S	R	S	R	S	R	R
3507	Medicine	R	R	S	R	S	R	S	S	S	S	R
5848	Medicine	R	R	R	R	R	R	S	S	S	R	R
6389	Medicine	R	R	R	R	R	R	S	S	S	S	R
7017	Pediatric	R	R	R	R	R	R	S	R	I	I	R
8810	Pediatric	R	R	R	R	S	R	S	R	R	R	R
9344	Pediatric	R	R	R	R	R	R	S	S	I	R	R
12900	Pediatric	R	R	R	R	R	R	S	S	I	I	R
12968	Medicine	R	R	R	R	R	R	S	R	S	R	R
12999	Pediatric	R	R	R	R	R	R	S	R	R	R	R
13308	Medicine	R	R	R	R	R	R	S	R	R	R	R
13311	Pediatric	R	R	R	R	R	R	S	S	S	S	R
13313	Medicine	R	R	R	R	R	R	S	R	R	R	R

Abbreviations: S-susceptible; I-intermediate; R-resistant, CAZ-Ceftazidime; CTX-Cefotaxime; AMC-Amoxicillin-clavulanic acid; SXT-Trimethoprim-sulfamethoxazole; CIP-Ciprofloxacin; AMP-Ampicillin; MER-Meropenem; GEN-Gentamicin; FOX-Cefoxitin; PZT-Piperacillin-tazobactam; CRO-Ceftriaxone.

**Table S3. Antimicrobial susceptibility for ESBL-positive *E. coli* urine isolates (n=58)**

ID-NUMBER	WARD	CAZ	CTX	AMC	SXT	CIP	AMP	MER	NIT	GEN	FOX	PTZ	CRO
980	Outpatient	R	R	R	R	I	R	S	S	S	S	R	R
996	Outpatient	R	R	R	S	S	R	S	S	R	S	R	R
1000	Outpatient	R	R	R	R	R	R	S	R	R	S	S	R
1022	Pediatric	R	I	R	R	I	R	S	S	R	S	S	R
1037	Pediatric	R	R	R	R	R	R	S	S	R	R	R	R
1438	Pediatric	R	R	R	R	S	R	S	S	R	S	S	R
1482	Medicine	R	R	R	R	S	R	S	S	S	I	S	R
1620	Medicine	R	R	R	R	R	R	S	R	S	R	I	R
2596	Pediatric	R	R	R	S	S	R	S	S	R	S	S	R
3450	Pediatric	R	R	I	R	S	R	S	S	R	S	S	R
3463	Pediatric	R	R	R	R	S	R	S	S	R	S	S	R
3490	Pediatric	R	I	R	S	S	R	S	S	S	I	R	R
5917	Pediatric	R	R	R	R	R	R	S	R	R	S	I	R
4557	Pediatric	R	R	R	R	S	R	S	S	S	I	S	R
4980	Medicine	R	R	R	R	S	R	S	S	S	R	S	R
5100	Pediatric	R	R	R	R	R	R	S	S	R	S	I	R
5102	Medicine	R	R	S	R	S	R	S	S	S	S	S	R
5920	Pediatric	R	R	R	R	R	R	S	R	S	R	I	R
6002	Pediatric	I	R	R	R	R	R	S	S	S	R	S	R
6003	Pediatric	R	R	R	R	R	R	S	R	R	S	R	R
6057	Pediatric	R	R	R	R	S	R	S	S	S	R	R	R
6187	Pediatric	R	R	R	R	R	R	S	S	S	S	I	R
6514	Pediatric	I	R	R	R	R	R	S	R	S	R	S	R
6539	Pediatric	R	R	R	R	R	R	S	S	R	S	R	R
6670	Outpatient	R	R	R	R	R	R	S	S	R	S	S	R
6715	Medicine	R	R	R	R	S	R	S	S	S	I	I	R
6818	Outpatient	R	R	R	R	R	R	S	R	R	S	S	S
7421	Pediatric	R	R	R	R	R	R	S	S	S	S	R	R
7922	Pediatric	R	R	R	R	R	R	S	I	S	S	R	R
9479	Medicine	R	R	R	R	R	R	S	S	S	R	R	R
9481	Pediatric	R	R	R	R	S	R	S	S	S	R	R	R
10156	Pediatric	R	R	R	R	R	R	S	S	R	S	R	R
10642	Outpatient	R	I	I	R	S	R	S	S	S	S	S	R
10646	Pediatric	R	R	R	R	R	R	S	S	S	R	S	R
10822	Outpatient	R	R	R	R	S	R	S	S	S	R	S	R
10846	Pediatric	R	R	R	R	S	R	S	S	R	R	R	R
10864	Pediatric	R	R	R	R	R	R	S	S	R	R	R	R
10869	Pediatric	R	R	R	R	R	R	S	S	S	R	R	R
11460	Pediatric	R	R	R	R	R	R	S	R	R	R	S	R
11598	Surgery	R	R	R	R	R	R	S	R	S	R	I	R
12394	Pediatric	R	R	R	R	S	R	S	R	S	S	S	R
12958	Pediatric	R	R	R	R	R	R	S	R	R	R	I	R
13036	Pediatric	R	R	R	R	R	R	S	S	R	R	S	R
13088	Medicine	R	R	R	R	R	R	S	I	R	R	R	R
13040	Pediatric	R	R	R	R	R	R	S	S	S	R	R	R
13301	Pediatric	R	R	R	R	R	R	S	R	R	R	S	R
13302	Pediatric	R	R	R	R	S	R	S	S	S	R	I	R
13304	Pediatric	R	R	R	R	R	R	S	R	S	I	R	R
13305	Pediatric	R	R	R	R	R	R	S	S	R	R	I	R
13309	Pediatric	R	R	R	R	R	R	S	R	I	R	R	R
13310	Pediatric	R	R	R	R	R	R	S	R	R	R	R	R
13314	Pediatric	R	R	R	R	R	R	S	R	S	R	R	R
13315	Medicine	R	R	R	R	R	R	S	R	S	R	R	R
13316	Medicine	R	R	R	R	R	R	S	R	S	S	S	R
13320	Surgery	R	R	R	R	R	R	S	R	S	R	R	R
13335	Pediatric	R	R	R	R	R	R	S	R	R	R	S	R
13313	Medicine	R	R	R	R	R	R	S	S	R	S	R	R
10088	Medicine	R	R	R	R	R	R	S	S	S	S	S	R

Abbreviations: S-susceptible; I-intermediate; R-resistant; CAZ-Ceftazidime; CTX-Cefotaxime; AMC-Amoxicillin-clavulanic acid; SXT-Trimethoprim-sulfamethoxazole; CIP-Ciprofloxacin; AMP- Ampicillin; MER-Meropenem; NIT-Nitrofurantoin; GEN-Gentamicin; FOX-Cefoxitin; PTZ-Piperacillin-tazobactam; CRO-Ceftriaxone.



**Figure S1:** Cluster analysis of ESBL-positive *E. coli* (n=75) isolates based on ERIC-PCR fingerprinting patterns using Jacquard index and UPGMA clustering. The scale at the top left represents percentage similarity. Isolate columns: identification with origins in brackets: O = outpatient, P = paediatrics, M = medicine, S = surgery, U = urine and B= blood. Presence (+) or absence (-) of *bla*<sub>CTX-M</sub> and sequence type are also indicated for each strain.

